

AASHLEY

HILLARY

1 ASHLEY ROAD

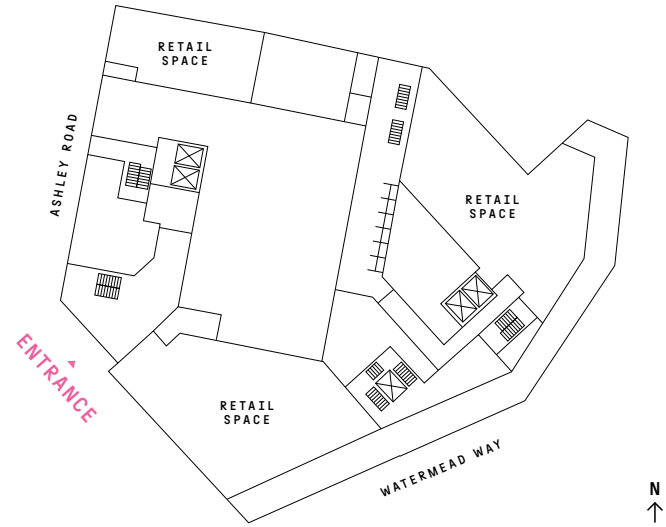
ROAD

THE BUILDING
THE HOMES
THE FINISHES

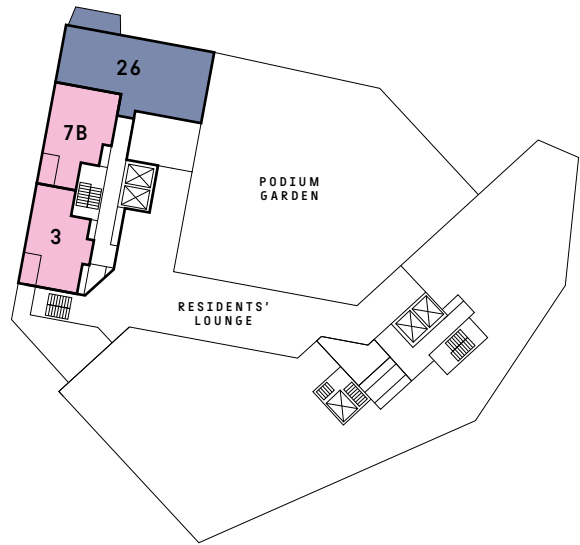
ALL THE
DETAILS

APARTMENT FINDER

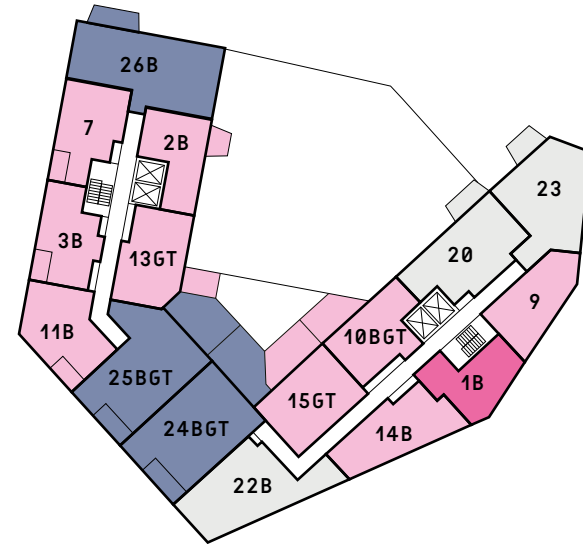
- STUDIO
- 1 BEDROOM
- 2 BEDROOM
- 3 BEDROOM



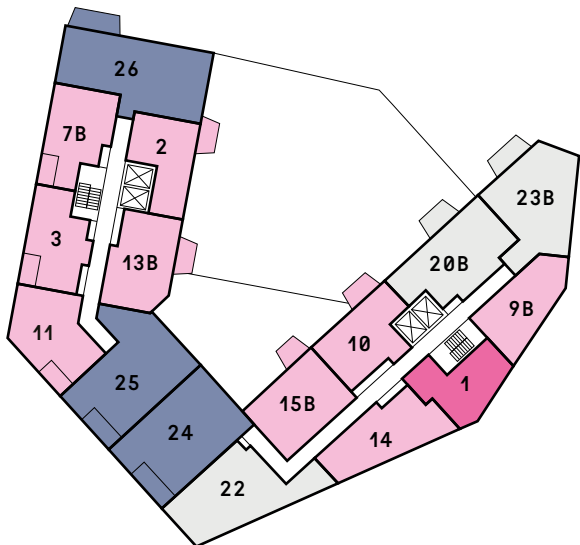
1



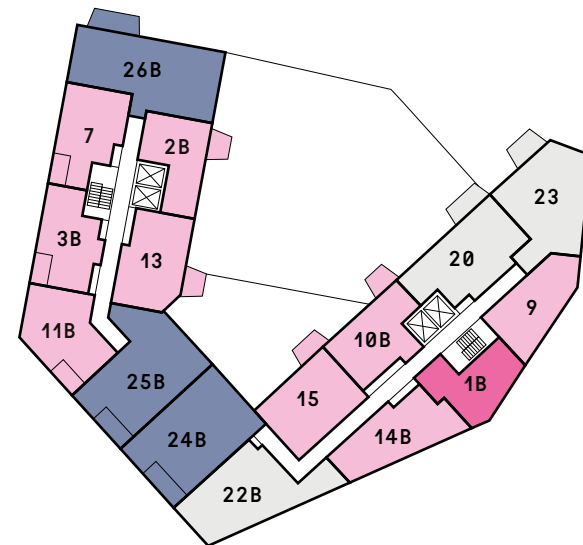
2



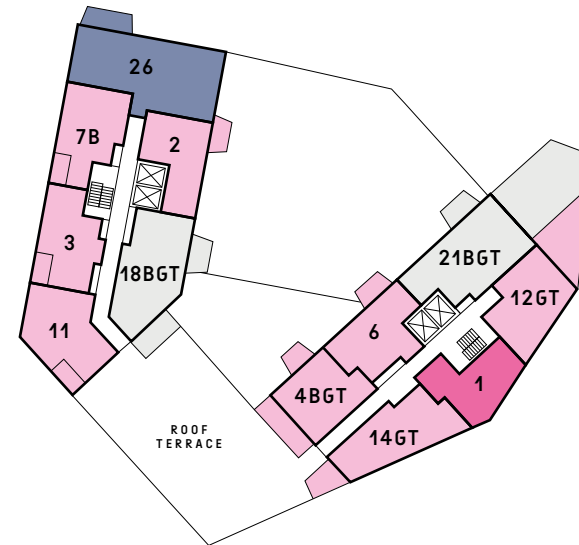
3



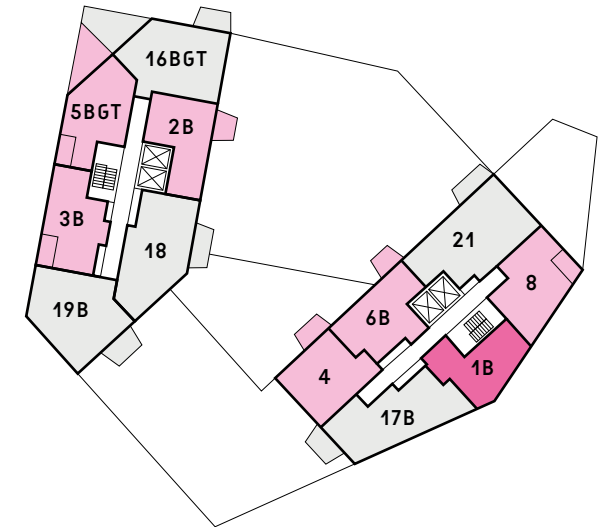
4



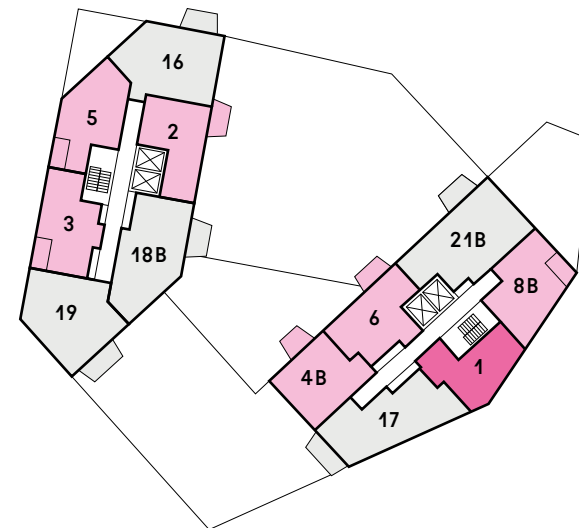
5



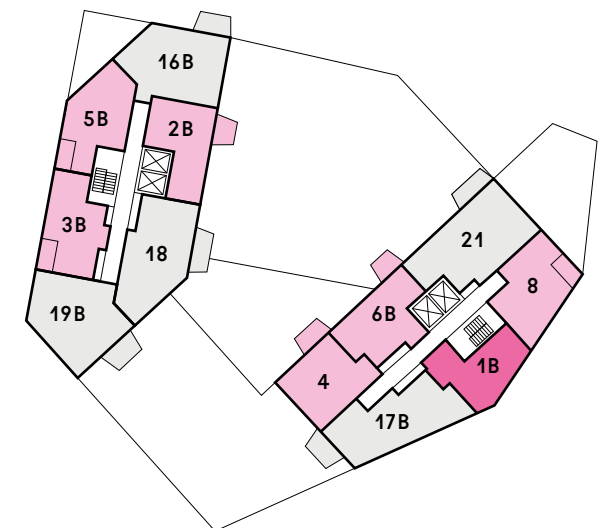
6



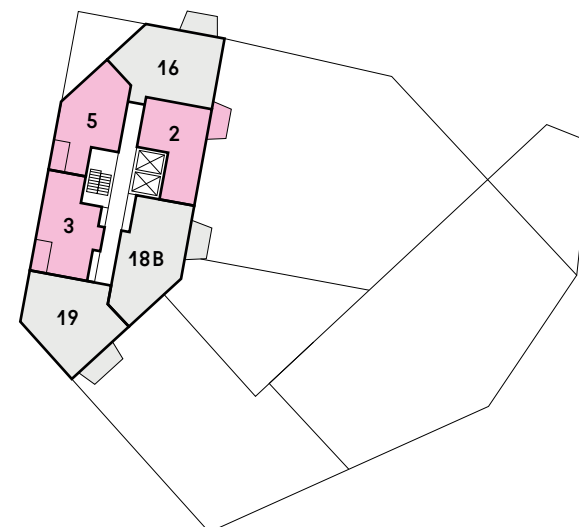
7, 9, 11



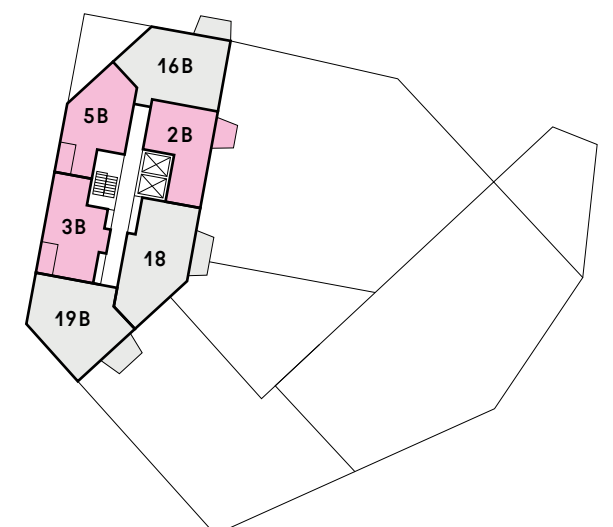
8, 10, 12



13, 15, 17



14, 16, 18

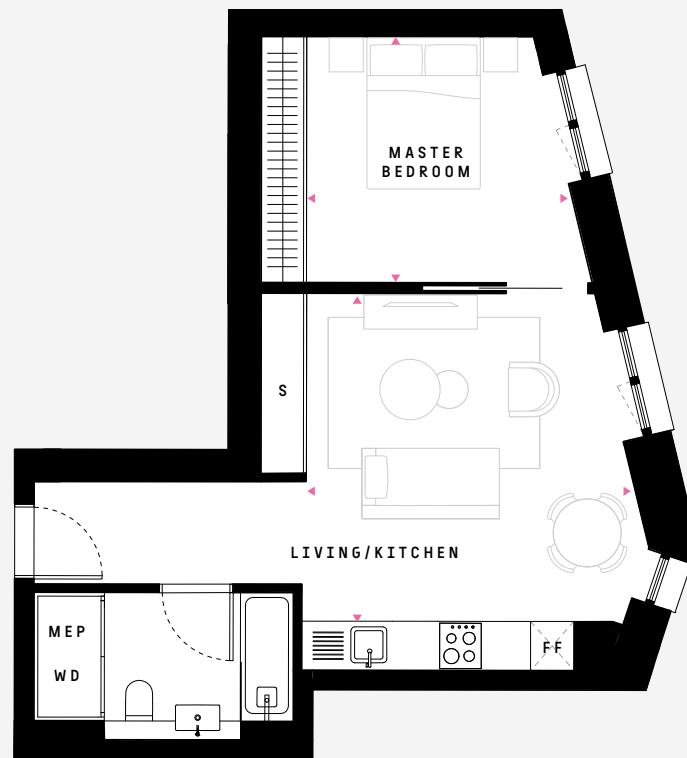
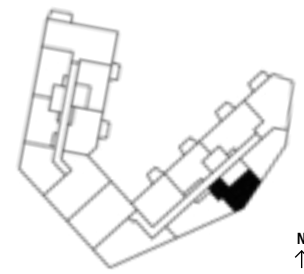


Numbers refer to apartment types

TYPE 1
STUDIO: FLOORS 3, 5, 7, 9, 11

NSA	48.7 sq m	524 sq ft
LIVING/KITCHEN	4.33 × 4.38m	14'2" × 14'4"
MASTER BEDROOM	3.25 × 3.46m	10'8" × 11'4"

E.34 E.53 E.73
E.93 E.113

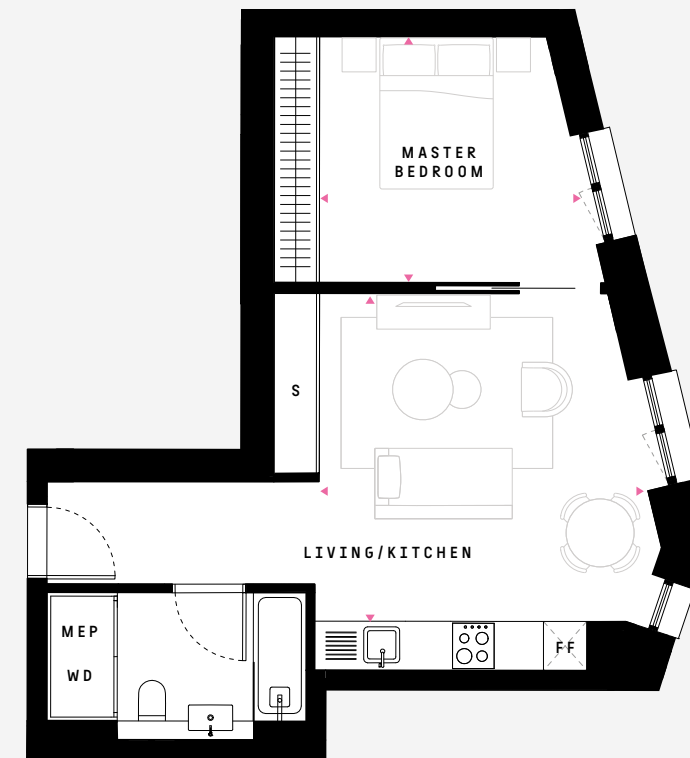


FF: Fridge Freezer MEP: Mechanical, Electrical, Plumbing S: Storage WD: Washer Dryer

TYPE 1B
STUDIO: FLOORS 2, 4, 6, 8, 10, 12

NSA	48.7 sq m	524 sq ft
LIVING/KITCHEN	4.33 × 4.38m	14'2" × 14'4"
MASTER BEDROOM	3.25 × 3.46m	10'8" × 11'4"

E.24 E.44 E.63
E.83 E.103 E.123



FF: Fridge Freezer MEP: Mechanical, Electrical, Plumbing S: Storage WD: Washer Dryer

TYPE 2
1 BEDROOM: FLOORS 3, 5, 7, 9, 11, 13, 15, 17

NSA	51.8 sq m	558 sq ft
LIVING/KITCHEN	4.13 × 6.08m	13'7" × 19'11"
MASTER BEDROOM	2.92 × 3.40m	9'7" × 11'2"
BALCONY	3.52 × 1.75m	11'7" × 5'9"

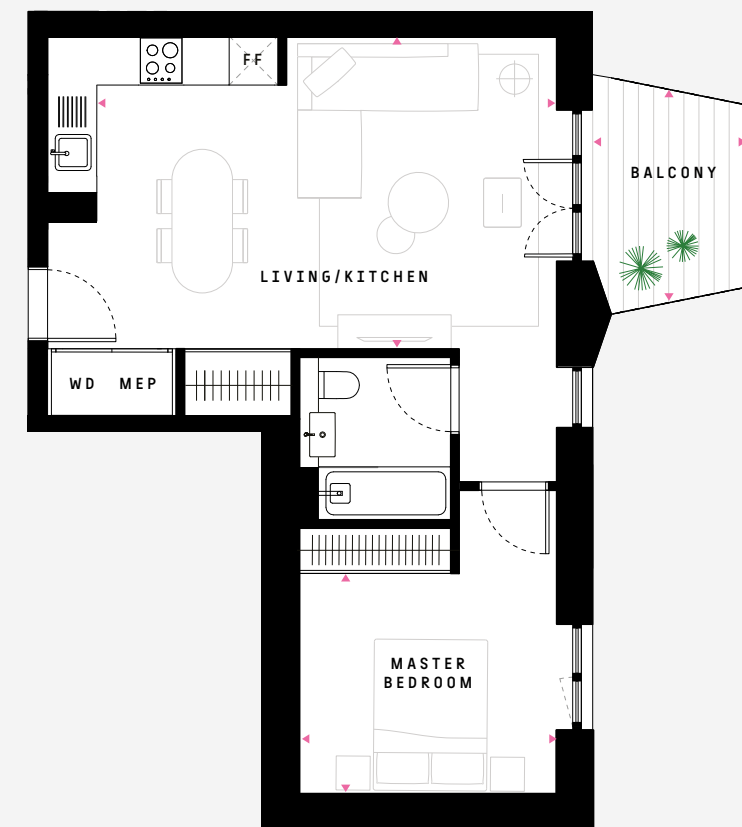
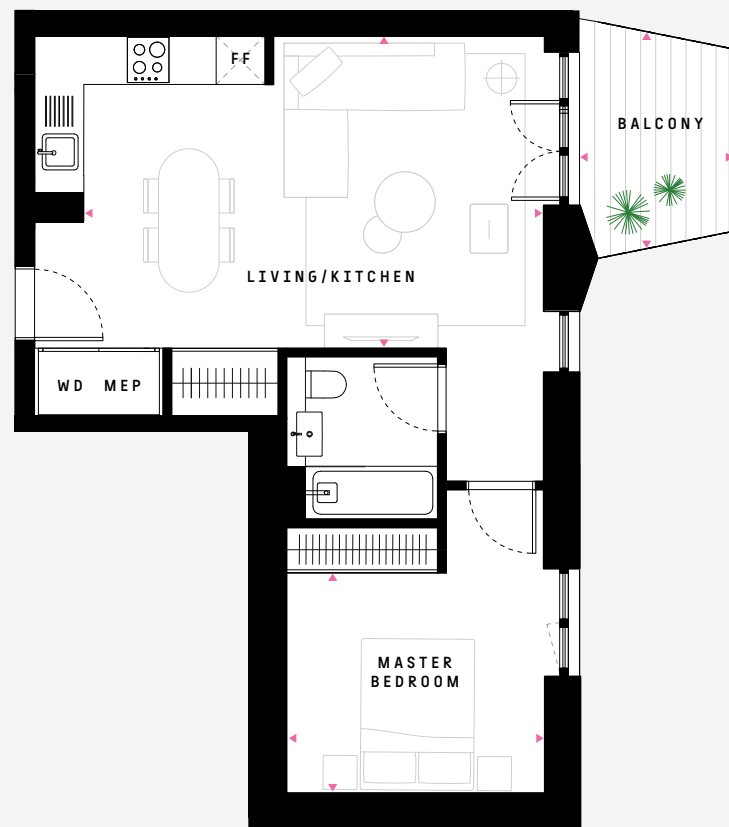
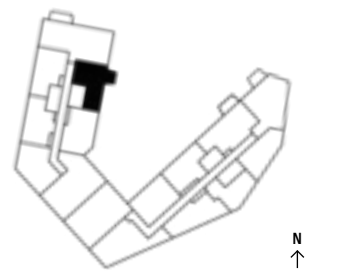
W.37 W.56 W.76
W.96 W.116 W.136
W.156 W.176



TYPE 2B
1 BEDROOM: FLOORS 2, 4, 6, 8, 10, 12, 14, 16, 18

NSA	51.8 sq m	558 sq ft
LIVING/KITCHEN	4.13 × 6.08m	13'7" × 19'11"
MASTER BEDROOM	2.92 × 3.40m	9'7" × 11'2"
BALCONY	2.78 × 2.05m	9'1" × 6'9"

W.27 W.47 W.66
W.86 W.106 W.126
W.146 W.166 W.186



TYPE 3
1 BEDROOM: FLOORS 1, 3, 5, 7, 9, 11, 13, 15, 17

NSA	51.6 sq m	555 sq ft
LIVING/KITCHEN	6.57 × 3.46m	21'7" × 11'4"
MASTER BEDROOM	3.07 × 3.39m	10'1" × 11'1"
BALCONY	2.81 × 1.96m	9'3" × 6'5"

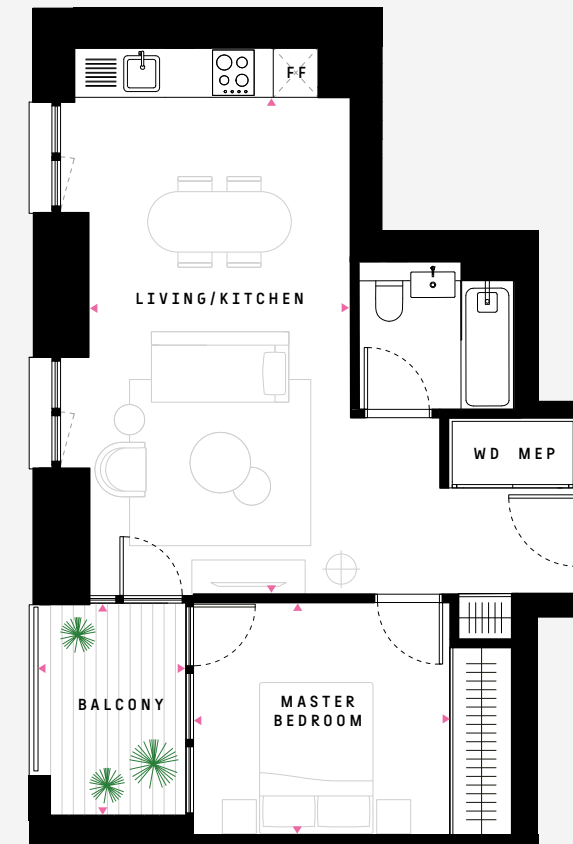
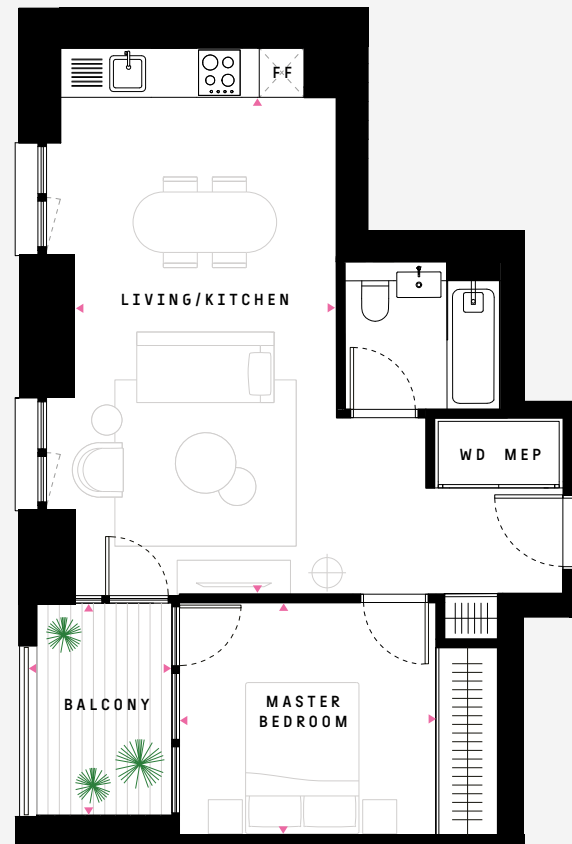
W.11 W.34 W.53
W.73 W.93 W.113
W.133 W.153 W.173



TYPE 3B
1 BEDROOM: FLOORS 2, 4, 6, 8, 10, 12, 14, 16, 18

NSA	51.6 sq m	555 sq ft
LIVING/KITCHEN	6.57 × 3.46m	21'7" × 11'4"
MASTER BEDROOM	3.07 × 3.39m	10'1" × 11'1"
BALCONY	2.81 × 1.96m	9'3" × 6'5"

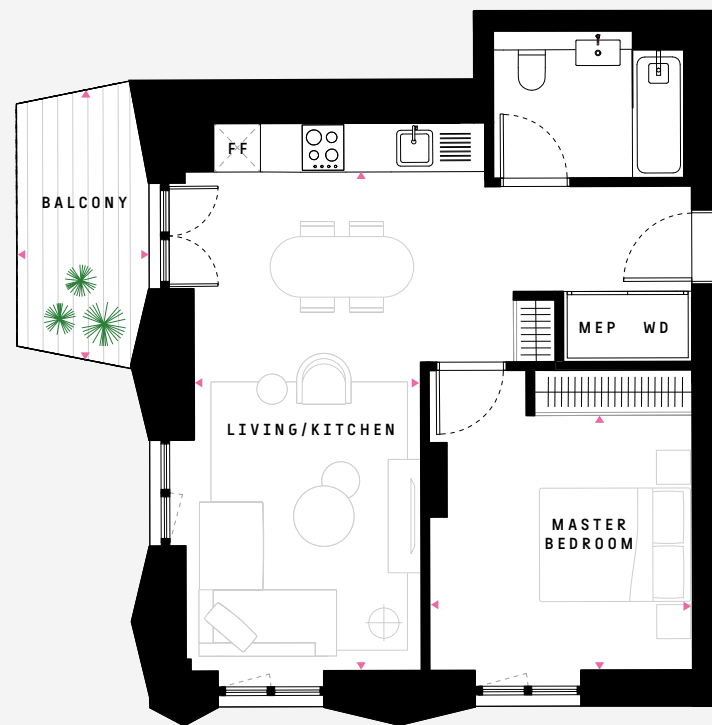
W.24 W.44 W.63
W.83 W.103 W.123
W.143 W.163 W.183



TYPE 4
1 BEDROOM: FLOORS 6, 8, 10, 12

NSA	52.4 sq m	564 sq ft
LIVING/KITCHEN	6.59 × 2.99m	21'7" × 9'10"
MASTER BEDROOM	3.37 × 3.48m	11'1" × 11'5"
BALCONY	3.50 × 1.75m	11'6" × 5'9"

E.65 E.85 E.105
 E.125

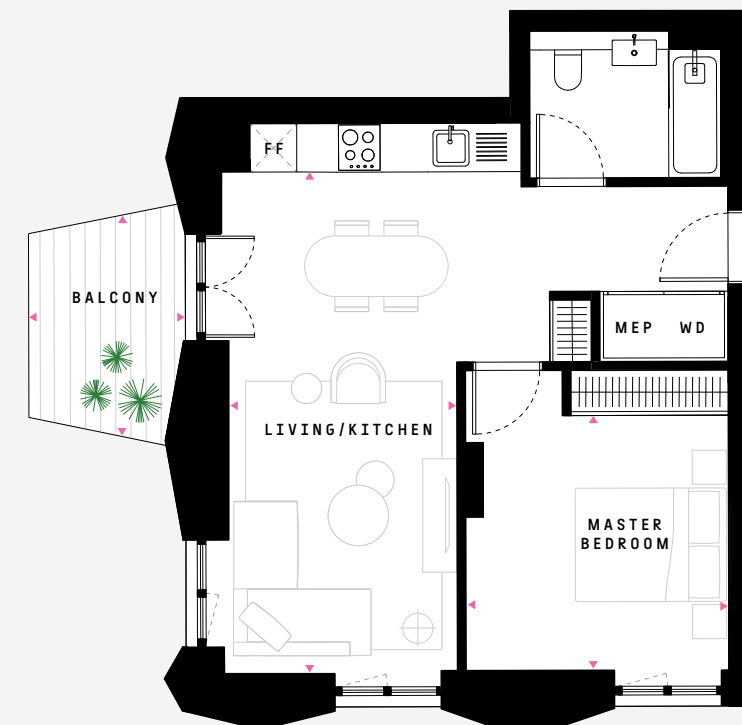


FF: Fridge Freezer MEP: Mechanical, Electrical, Plumbing S: Storage WD: Washer Dryer

TYPE 4B
1 BEDROOM: FLOORS 7, 9, 11

NSA	52.3 sq m	563 sq ft
LIVING/KITCHEN	6.59 × 2.99m	21'7" × 9'10"
MASTER BEDROOM	3.37 × 3.48m	11'1" × 11'5"
BALCONY	2.77 × 2.05m	9'1" × 6'9"

E.75 E.95 E.115

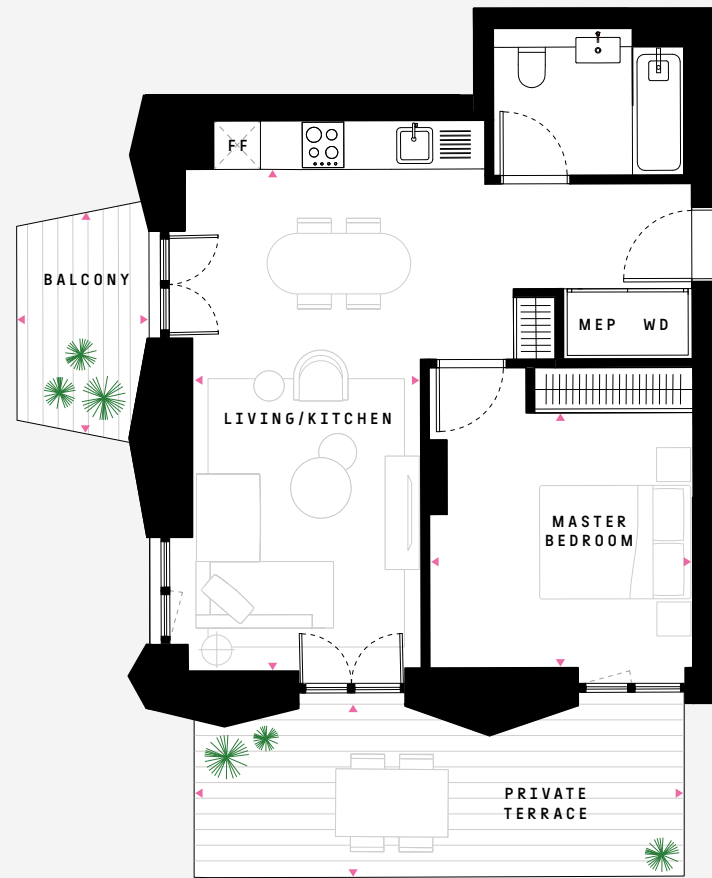


FF: Fridge Freezer MEP: Mechanical, Electrical, Plumbing S: Storage WD: Washer Dryer

TYPE 4BGT
1 BEDROOM: FLOOR 5

NSA	52.3 sq m	563 sq ft
LIVING/KITCHEN	6.59 × 2.99m	21'7" × 9'10"
MASTER BEDROOM	3.37 × 3.48m	11'1" × 11'5"
BALCONY	2.77 × 2.05m	9'1" × 6'9"
PRIVATE TERRACE	2.25 × 6.50m	7'5" × 21'4"

E.55

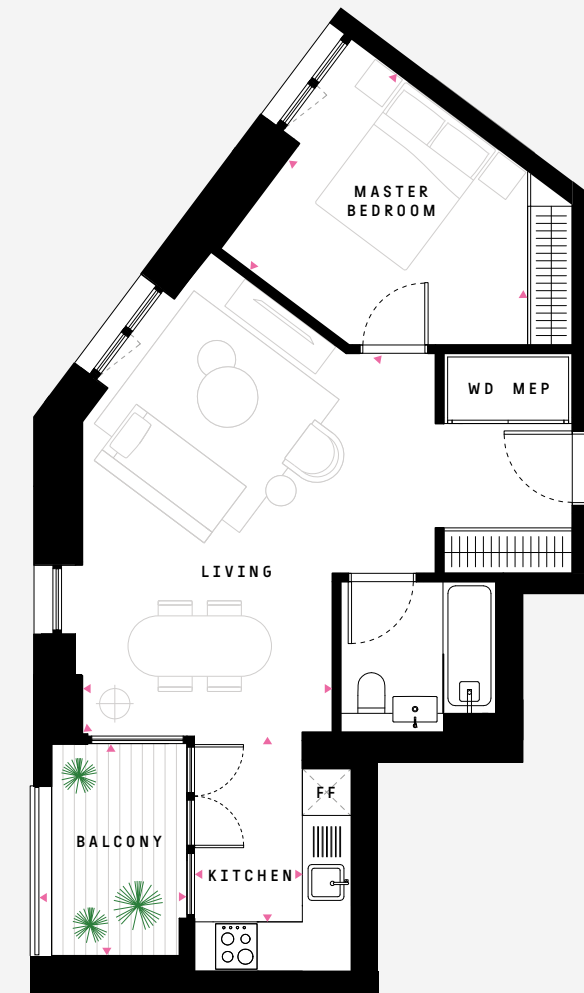
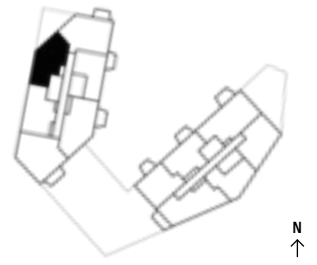


FF: Fridge Freezer MEP: Mechanical, Electrical, Plumbing S: Storage WD: Washer Dryer

TYPE 5
1 BEDROOM: FLOORS 7, 9, 11, 13, 15, 17

NSA	52.2 sq m	562 sq ft
KITCHEN	2.46 × 1.42m	8'1" × 4'8"
LIVING	6.10 × 3.85m	20'0" × 12'8"
MASTER BEDROOM	3.25 × 4.00m	10'8" × 13'1"
BALCONY	2.82 × 1.96m	9'3" × 6'5"

W.74 W.94 W.114
W.134 W.154 W.174

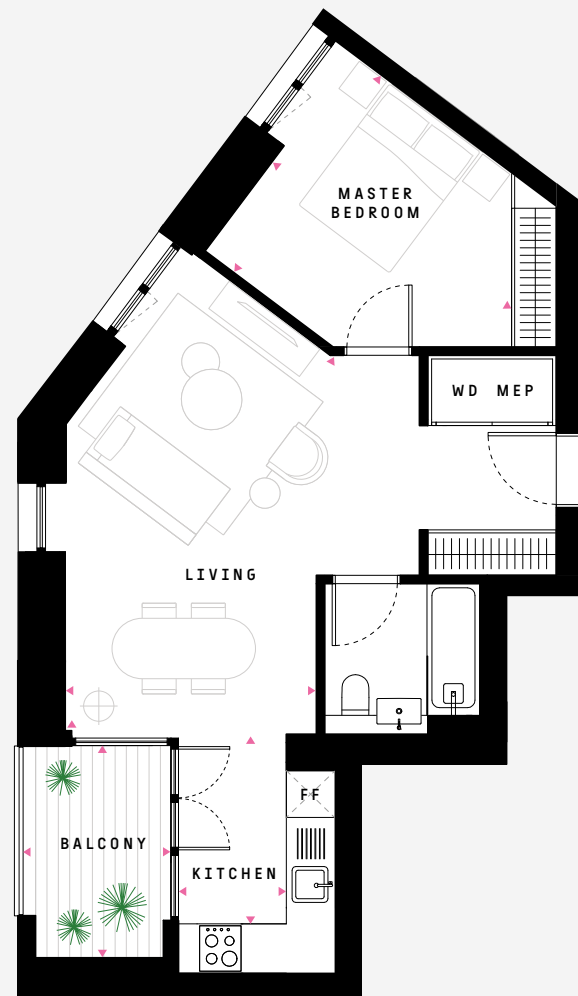


FF: Fridge Freezer MEP: Mechanical, Electrical, Plumbing S: Storage WD: Washer Dryer

TYPE 5B
1 BEDROOM: FLOORS 8, 10, 12, 14, 16, 18

NSA	52.2 sq m	562 sq ft
KITCHEN	2.46 × 1.42m	8'1" × 4'8"
LIVING	6.10 × 3.85m	20'0" × 12'8"
MASTER BEDROOM	3.25 × 4.00m	10'8" × 13'1"
BALCONY	2.82 × 1.96m	9'3" × 6'5"

W.84 W.104 W.124
W.144 W.164 W.184

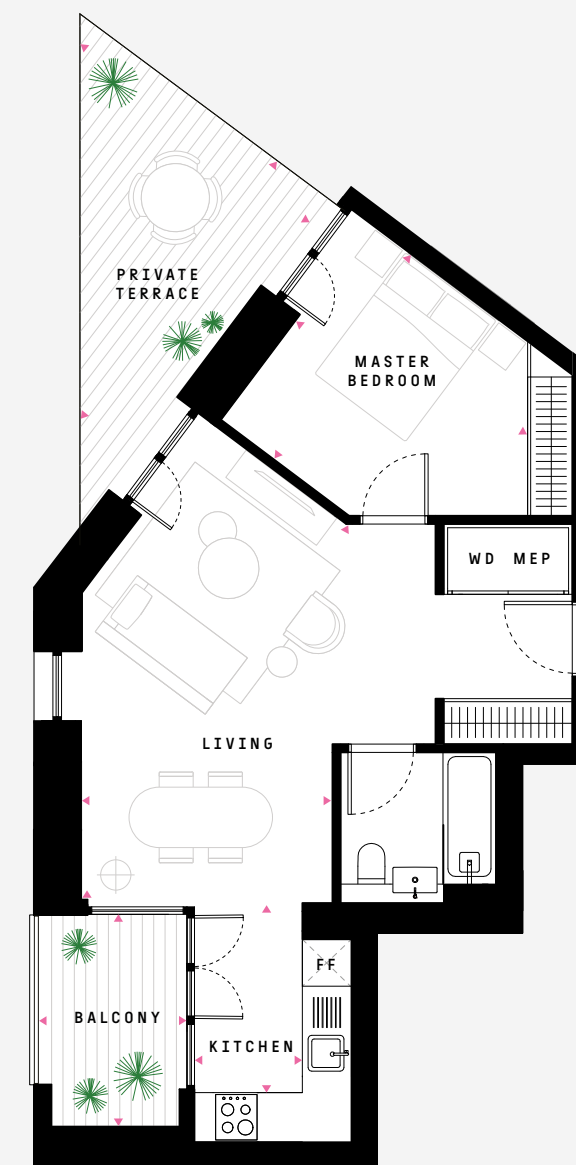
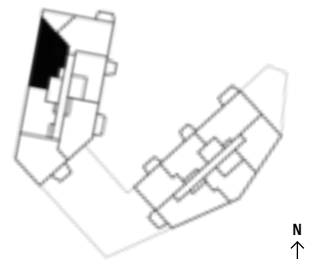


FF: Fridge Freezer MEP: Mechanical, Electrical, Plumbing S: Storage WD: Washer Dryer

TYPE 5BGT
1 BEDROOM: FLOOR 6

NSA	52.2 sq m	562 sq ft
KITCHEN	2.46 × 1.42m	8'1" × 4'8"
LIVING	6.10 × 3.85m	20'0" × 12'8"
MASTER BEDROOM	3.25 × 4.00m	10'8" × 13'1"
BALCONY	2.82 × 1.96m	9'3" × 6'5"
PRIVATE TERRACE	3.39 × 2.52m	11'1" × 8'3"

W.64

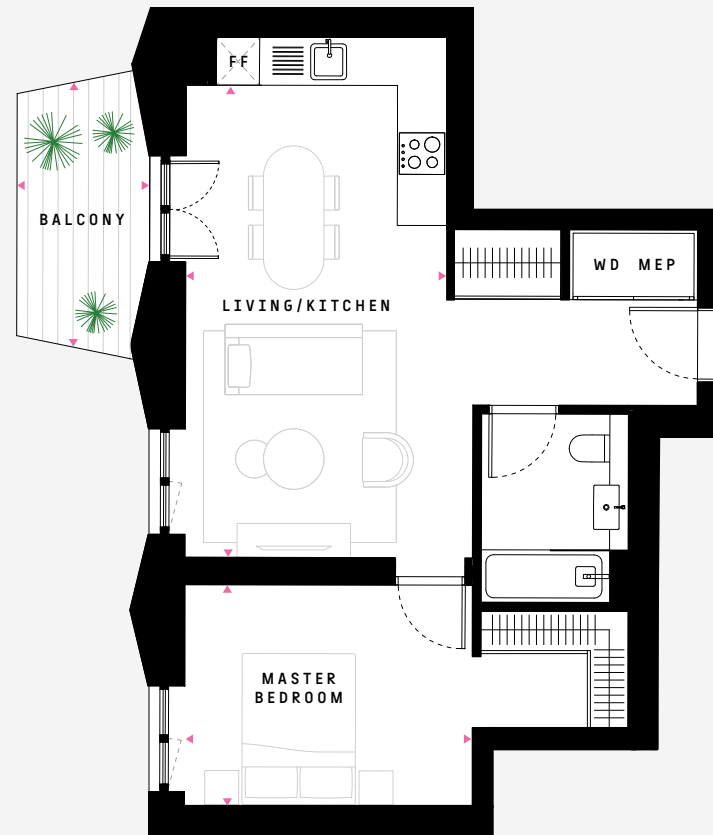


FF: Fridge Freezer MEP: Mechanical, Electrical, Plumbing S: Storage WD: Washer Dryer

TYPE 6
1 BEDROOM: FLOORS 5, 7, 9, 11

NSA	53.9 sq m	580 sq ft
LIVING/KITCHEN	6.25 × 3.44m	20'6" × 11'3"
MASTER BEDROOM	2.88 × 3.82m	9'5" × 12'6"
BALCONY	3.50 × 1.74m	11'6" × 5'9"

E.56 E.76 E.96
 E.116

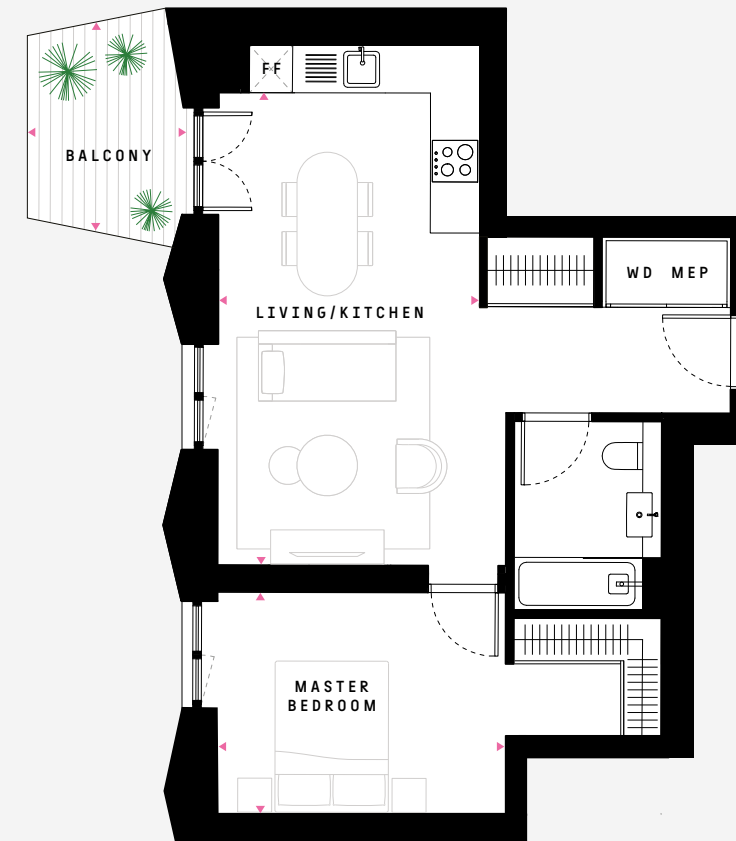
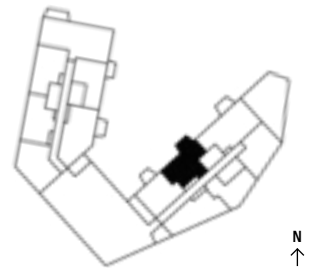


FF: Fridge Freezer MEP: Mechanical, Electrical, Plumbing S: Storage WD: Washer Dryer

TYPE 6B
1 BEDROOM: FLOOR 6, 8, 10, 12

NSA	53.8 sq m	579 sq ft
LIVING/KITCHEN	6.25 × 3.44m	20'6" × 11'3"
MASTER BEDROOM	2.88 × 3.82m	9'5" × 12'6"
BALCONY	2.76 × 2.05m	9'1" × 6'9"

E.66 E.86 E.106
 E.126



FF: Fridge Freezer MEP: Mechanical, Electrical, Plumbing S: Storage WD: Washer Dryer

TYPE 7
1 BEDROOM: FLOORS 2, 4

NSA	53.8 sq m	579 sq ft
KITCHEN	2.51 × 1.42m	8'3" × 4'8"
LIVING	4.05 × 5.05m	13'3" × 16'7"
MASTER BEDROOM	3.20 × 3.36m	10'6" × 11'0"
BALCONY	2.82 × 1.96m	9'3" × 6'5"

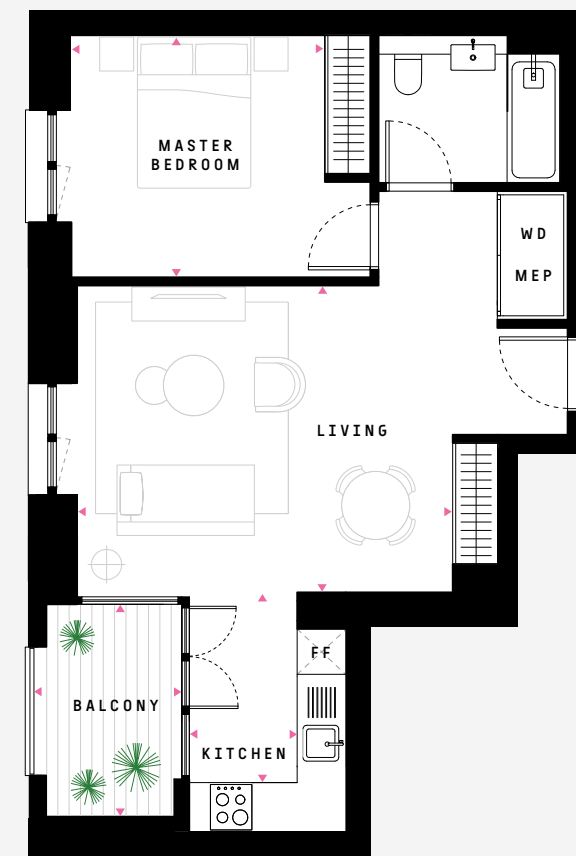
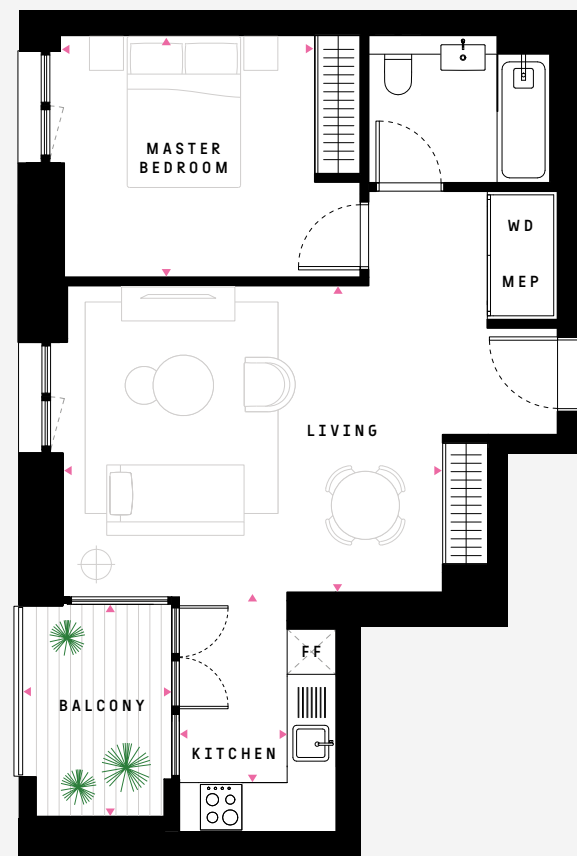
W.25 W.45



TYPE 7B
1 BEDROOM: FLOORS 1, 3, 5

NSA	53.8 sq m	579 sq ft
KITCHEN	2.51 × 1.42m	8'3" × 4'8"
LIVING	4.05 × 4.96m	13'3" × 16'3"
MASTER BEDROOM	3.20 × 3.36m	10'6" × 11'0"
BALCONY	2.82 × 1.96m	9'3" × 6'5"

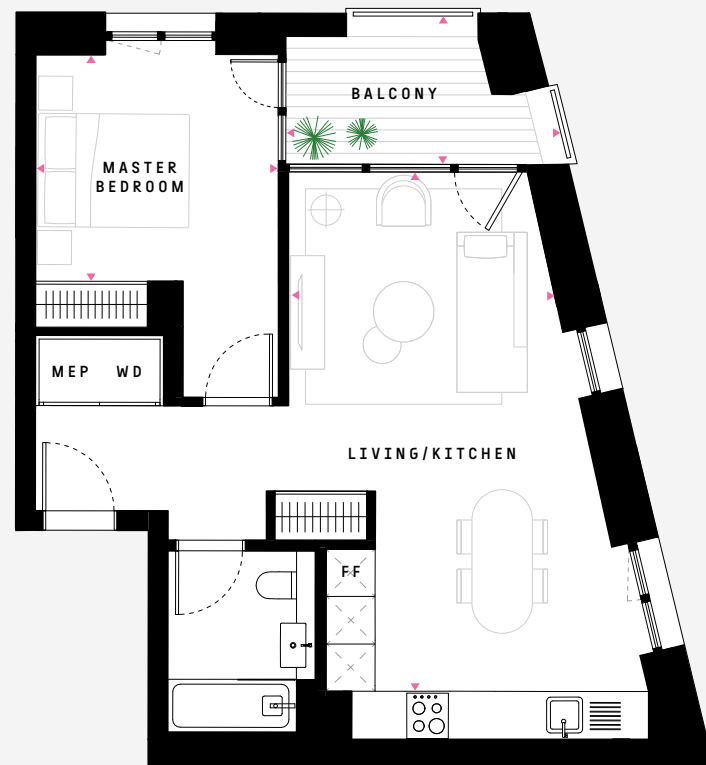
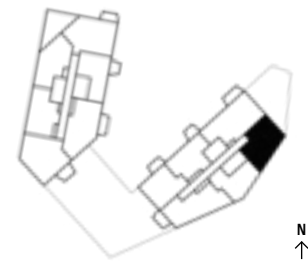
W.12 W.35 W.54



TYPE 8
1 BEDROOM: FLOORS 6, 8, 10, 12

NSA	55.5 sq m	597 sq ft
LIVING/KITCHEN	6.87 × 3.50m	22'6" × 11'6"
MASTER BEDROOM	3.00 × 3.23m	9'10" × 10'7"
BALCONY	1.94 × 3.16m	6'4" × 10'4"

E.62 E.82 E.102
E.122

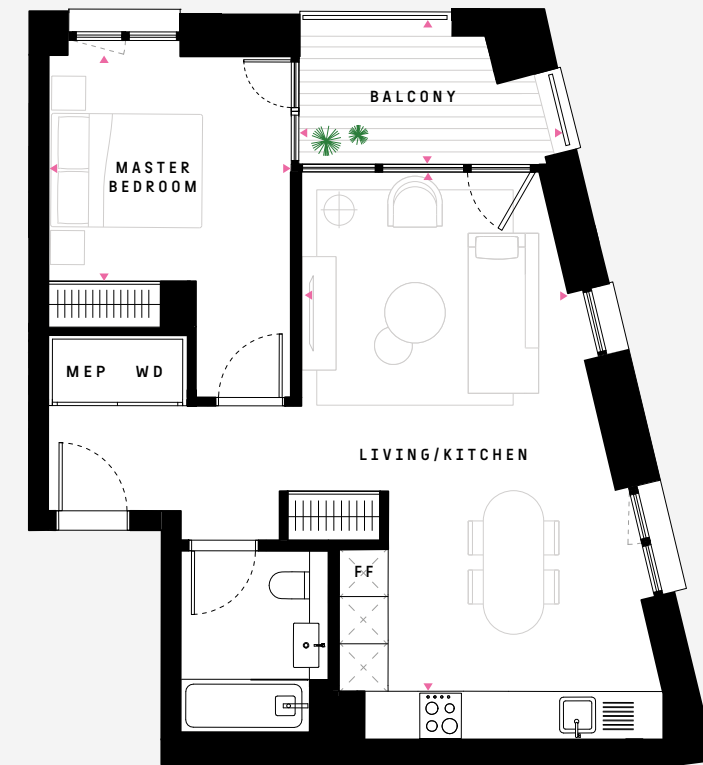


FF: Fridge Freezer MEP: Mechanical, Electrical, Plumbing S: Storage WD: Washer Dryer

TYPE 8B
1 BEDROOM: FLOORS 7, 9, 11

NSA	55.5 sq m	597 sq ft
LIVING/KITCHEN	6.86 × 3.50m	22'6" × 11'6"
MASTER BEDROOM	3.00 × 3.23m	9'10" × 10'7"
BALCONY	1.69 × 3.17m	5'7" × 10'5"

E.72 E.92 E.112

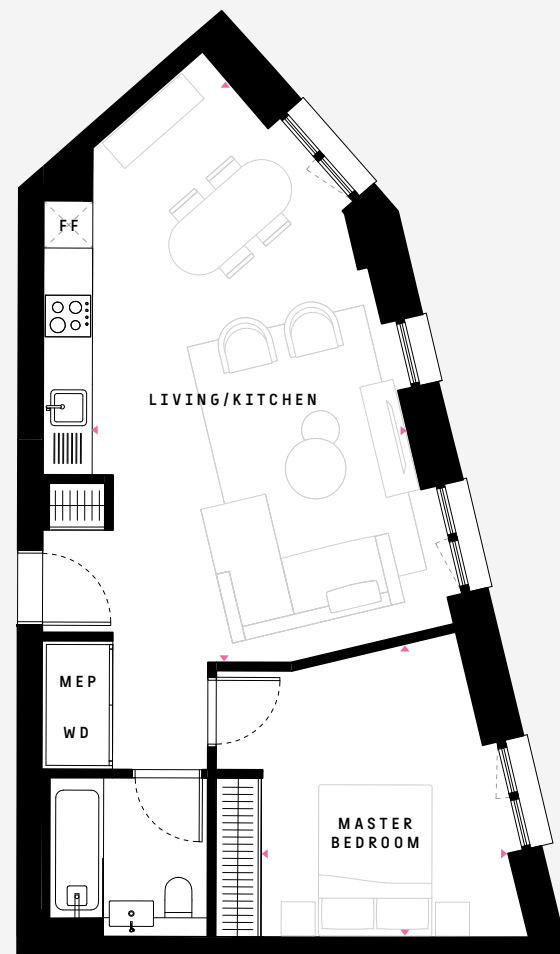
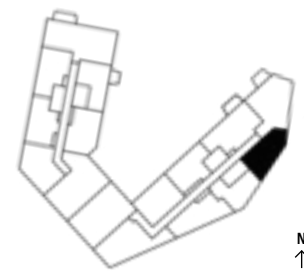


FF: Fridge Freezer MEP: Mechanical, Electrical, Plumbing S: Storage WD: Washer Dryer

TYPE 9
1 BEDROOM: FLOORS 2, 4

NSA	56.1 sq m	604 sq ft
LIVING/KITCHEN	7.53 × 4.18m	24'8" × 13'9"
MASTER BEDROOM	3.78 × 3.09m	12'5" × 10'2"

E.23 E.43

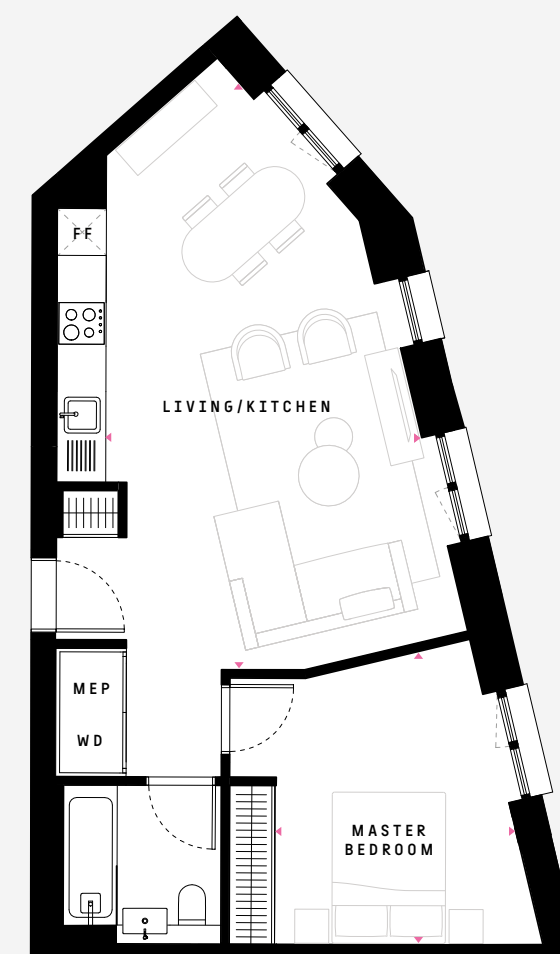
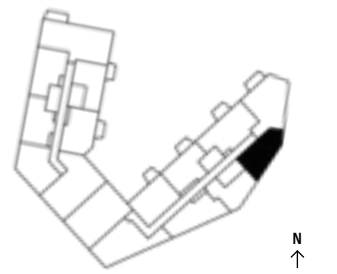


FF: Fridge Freezer MEP: Mechanical, Electrical, Plumbing S: Storage WD: Washer Dryer

TYPE 9B
1 BEDROOM: FLOOR 3

NSA	56.1 sq m	604 sq ft
LIVING/KITCHEN	7.53 × 4.18m	24'8" × 13'9"
MASTER BEDROOM	3.78 × 3.09m	12'5" × 10'2"

E.33

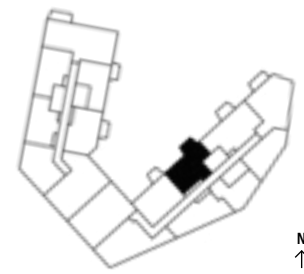


FF: Fridge Freezer MEP: Mechanical, Electrical, Plumbing S: Storage WD: Washer Dryer

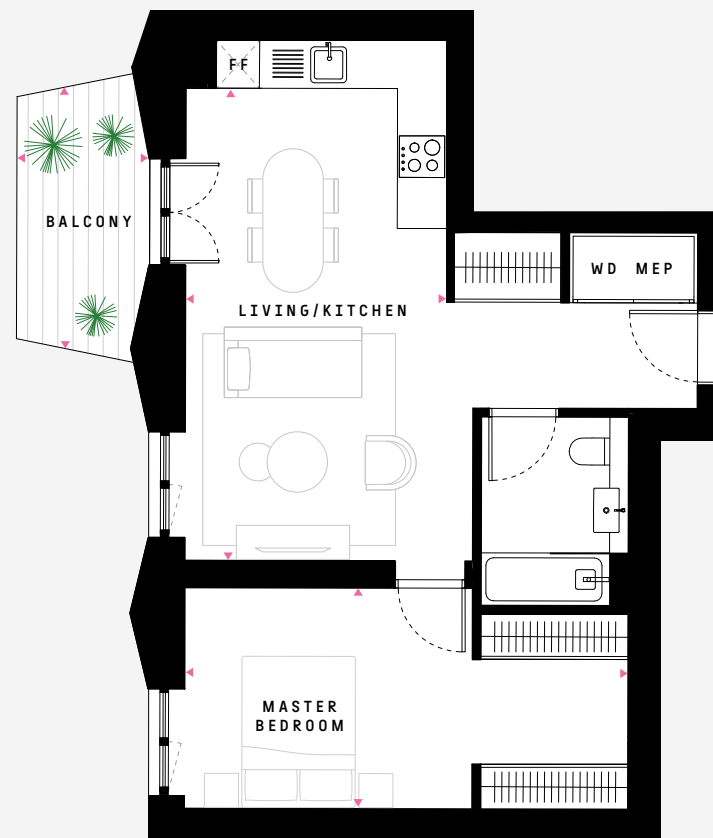
TYPE 10
1 BEDROOM: FLOOR 3

NSA	56.3 sq m	606 sq ft
LIVING/KITCHEN	6.25 × 3.44m	20'6" × 11'3"
MASTER BEDROOM	2.92 × 5.87m	9'7" × 19'3"
BALCONY	3.51 × 1.74m	11'6" × 5'9"

E.39



N
↑

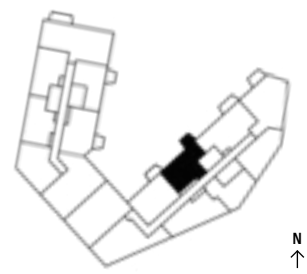


FF: Fridge Freezer MEP: Mechanical, Electrical, Plumbing S: Storage WD: Washer Dryer

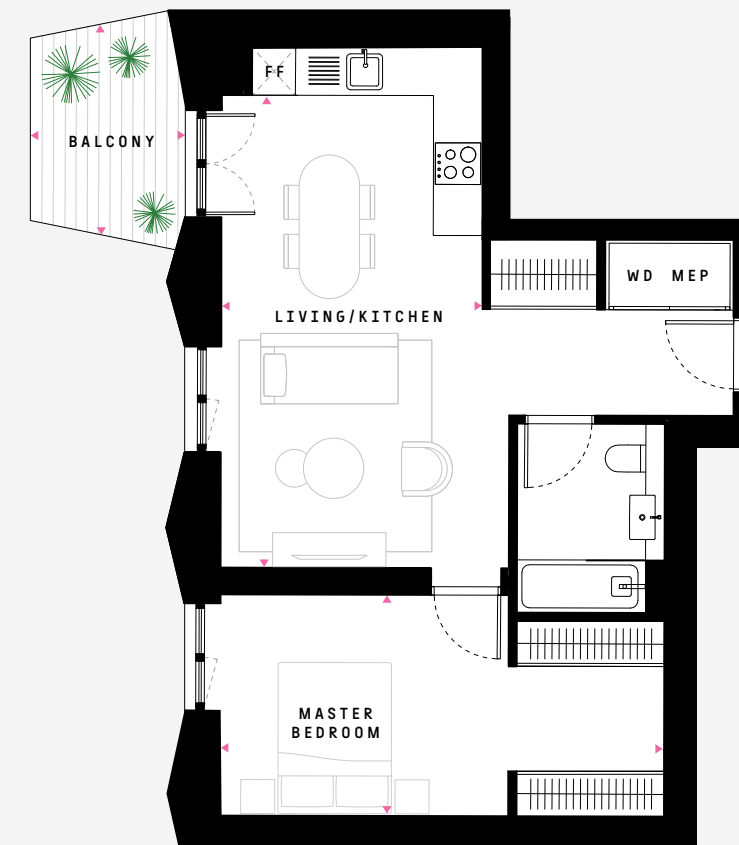
TYPE 10B
1 BEDROOM: FLOOR 4

NSA	56.3 sq m	606 sq ft
LIVING/KITCHEN	6.25 × 3.44m	20'6" × 11'3"
MASTER BEDROOM	2.92 × 5.87m	9'7" × 19'3"
BALCONY	2.75 × 2.05m	9'0" × 6'9"

E.49



N
↑

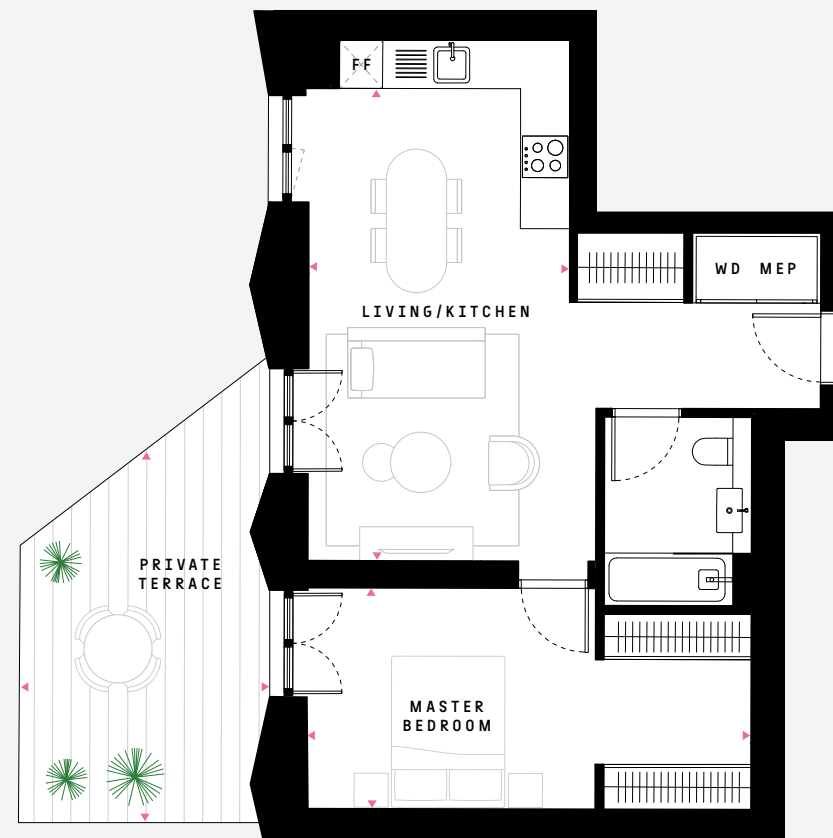
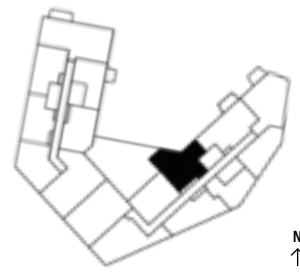


FF: Fridge Freezer MEP: Mechanical, Electrical, Plumbing S: Storage WD: Washer Dryer

TYPE 10BGT
1 BEDROOM: FLOOR 2

E.29

NSA	56.3 sq m	606 sq ft
LIVING/KITCHEN	6.25 × 3.44m	20'6" × 11'3"
MASTER BEDROOM	2.92 × 5.87m	9'7" × 19'3"
PRIVATE TERRACE	4.87 × 3.27m	16'0" × 10'9"

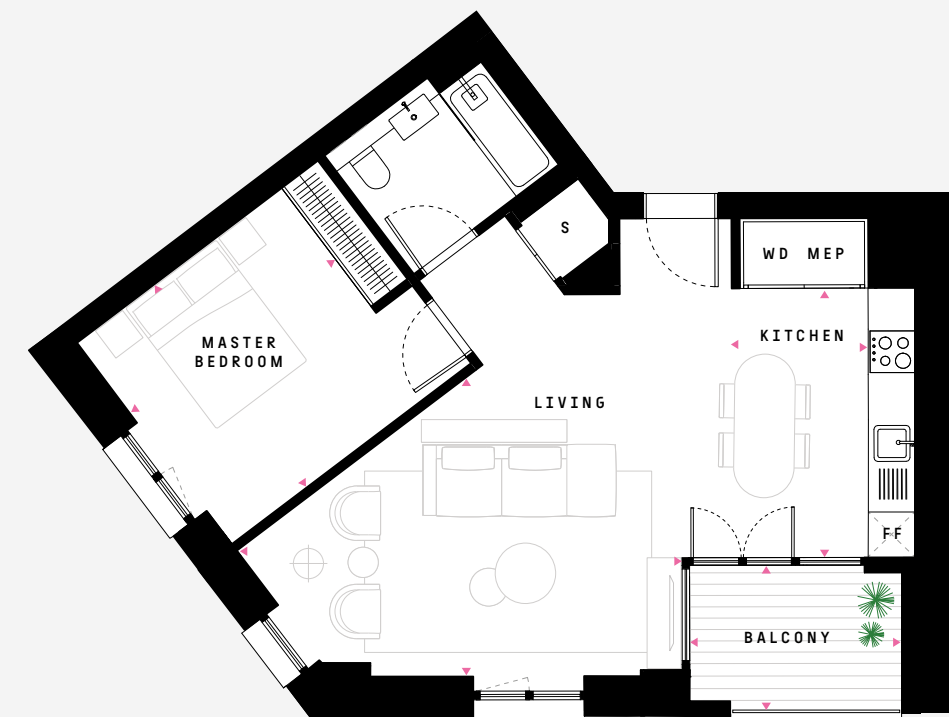
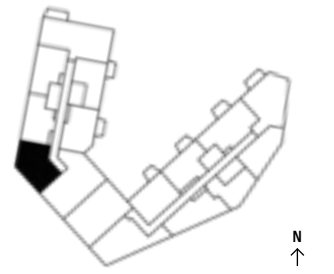


FF: Fridge Freezer MEP: Mechanical, Electrical, Plumbing S: Storage WD: Washer Dryer

TYPE 11
1 BEDROOM: FLOORS 3, 5

W.33 W.52

NSA	59.1 sq m	636 sq ft
KITCHEN	1.80 × 3.56m	5'11" × 11'8"
LIVING	5.89 × 4.13m	19'4" × 13'7"
MASTER BEDROOM	3.34 × 3.36m	10'11" × 11'0"
BALCONY	2.82 × 1.96m	9'3" × 6'5"

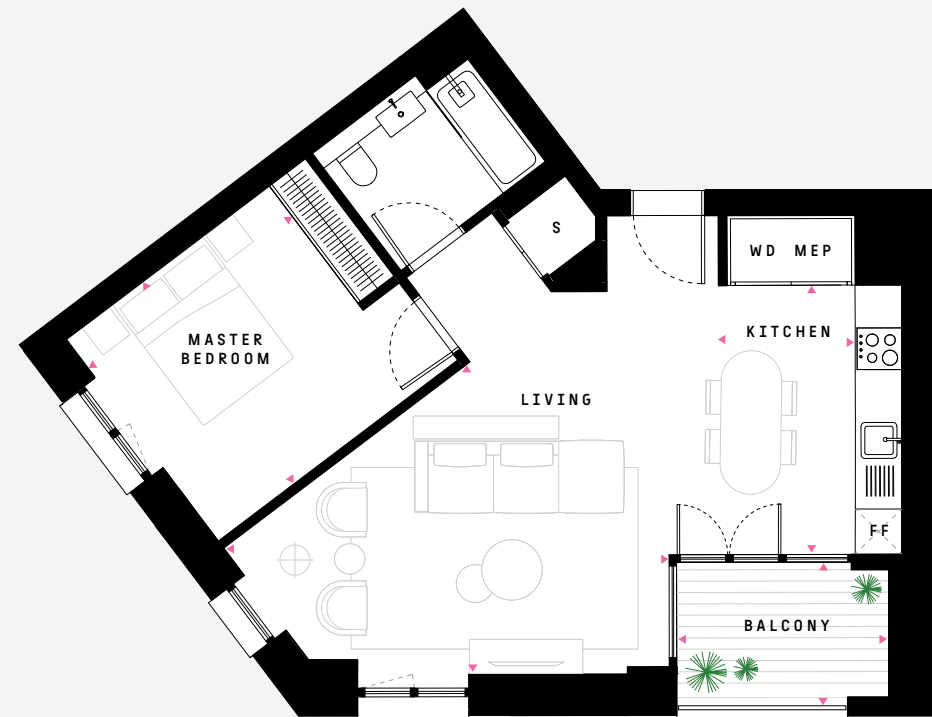
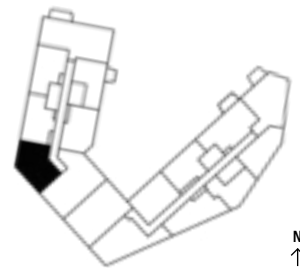


FF: Fridge Freezer MEP: Mechanical, Electrical, Plumbing S: Storage WD: Washer Dryer

TYPE 11B
1 BEDROOM: FLOORS 2, 4

W.23 W.43

NSA	59.0 sq m	635 sq ft
KITCHEN	1.80 × 3.56m	5'11" × 11'8"
LIVING	5.89 × 4.13m	19'4" × 13'7"
MASTER BEDROOM	3.34 × 3.36m	10'11" × 11'0"
BALCONY	2.82 × 1.96m	9'3" × 6'5"

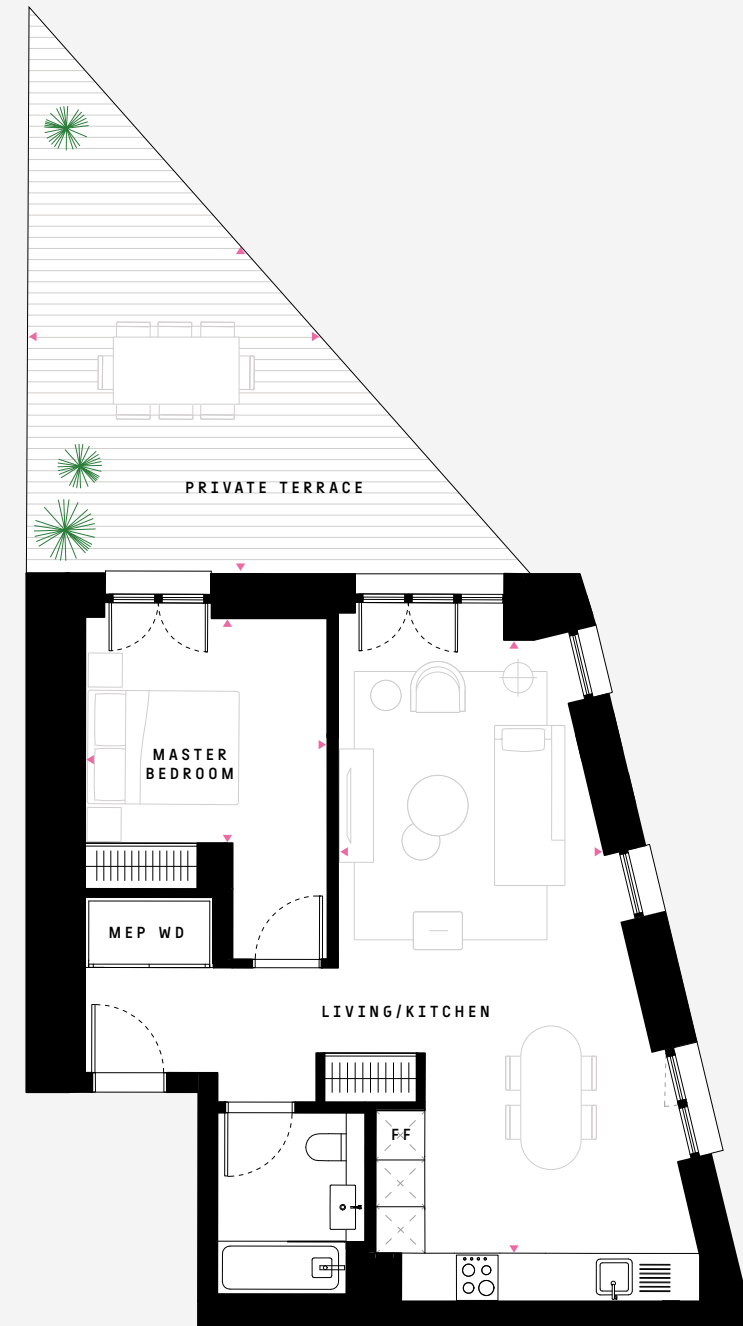
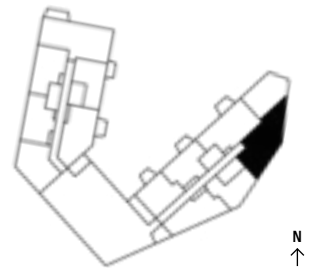


FF: Fridge Freezer MEP: Mechanical, Electrical, Plumbing S: Storage WD: Washer Dryer

TYPE 12GT
1 BEDROOM: FLOOR 5

E.52

NSA	60.5 sq m	651 sq ft
LIVING/KITCHEN	8.41 × 3.50m	27'7" × 11'6"
MASTER BEDROOM	3.00 × 3.24m	9'10" × 10'8"
PRIVATE TERRACE	4.25 × 3.80m	13'11" × 12'6"

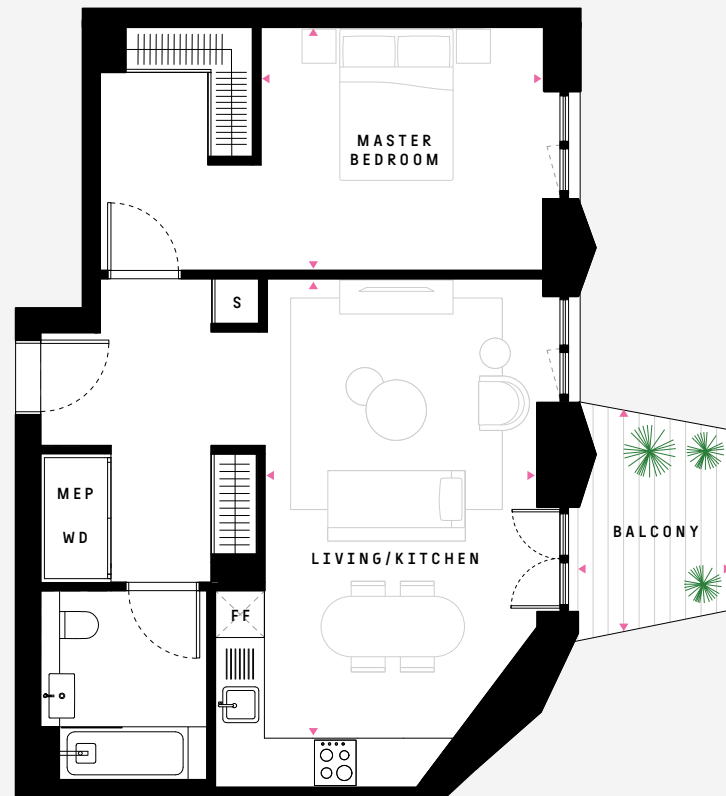
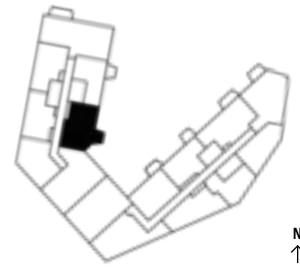


FF: Fridge Freezer MEP: Mechanical, Electrical, Plumbing S: Storage WD: Washer Dryer

TYPE 13
1 BEDROOM: FLOOR 4

W.41

NSA	62.6 sq m	674 sq ft
LIVING/KITCHEN	6.07 × 3.62m	19'11" × 11'11"
MASTER BEDROOM	3.20 × 5.87m	10'6" × 19'3"
BALCONY	2.77 × 2.05m	9'1" × 6'9"

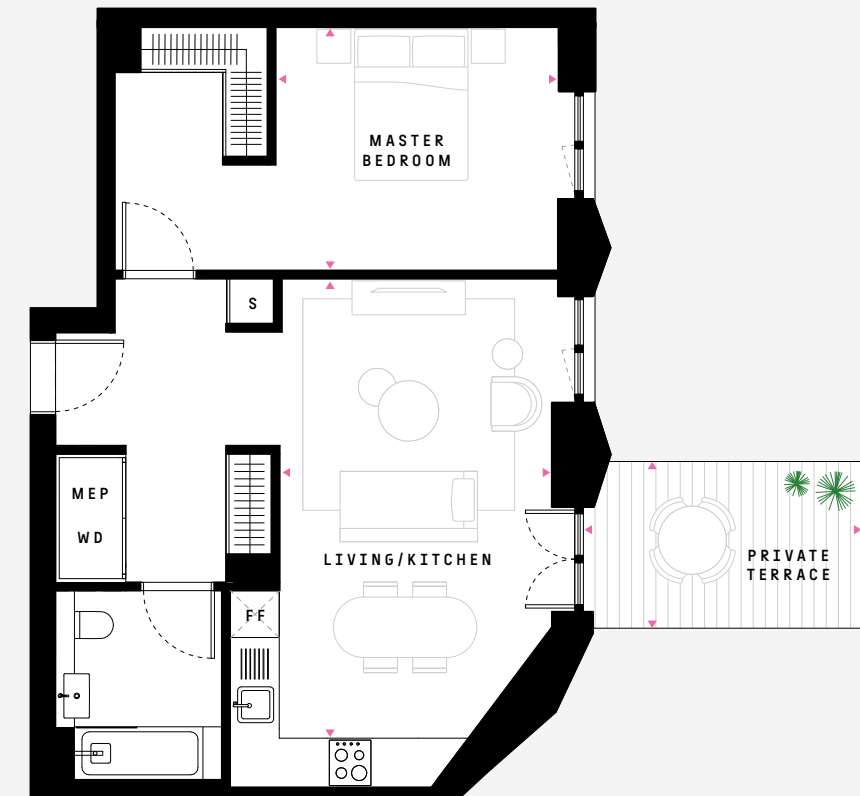
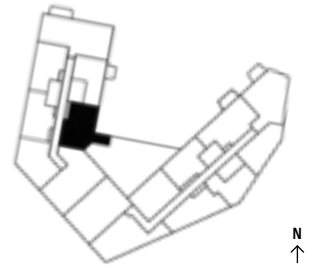


FF: Fridge Freezer MEP: Mechanical, Electrical, Plumbing S: Storage WD: Washer Dryer

TYPE 13GT
1 BEDROOM: FLOOR 2

W.21

NSA	62.6 sq m	674 sq ft
LIVING/KITCHEN	6.07 × 3.62m	19'11" × 11'11"
MASTER BEDROOM	3.20 × 5.87m	10'6" × 19'3"
PRIVATE TERRACE	2.24 × 3.60m	7'4" × 11'10"

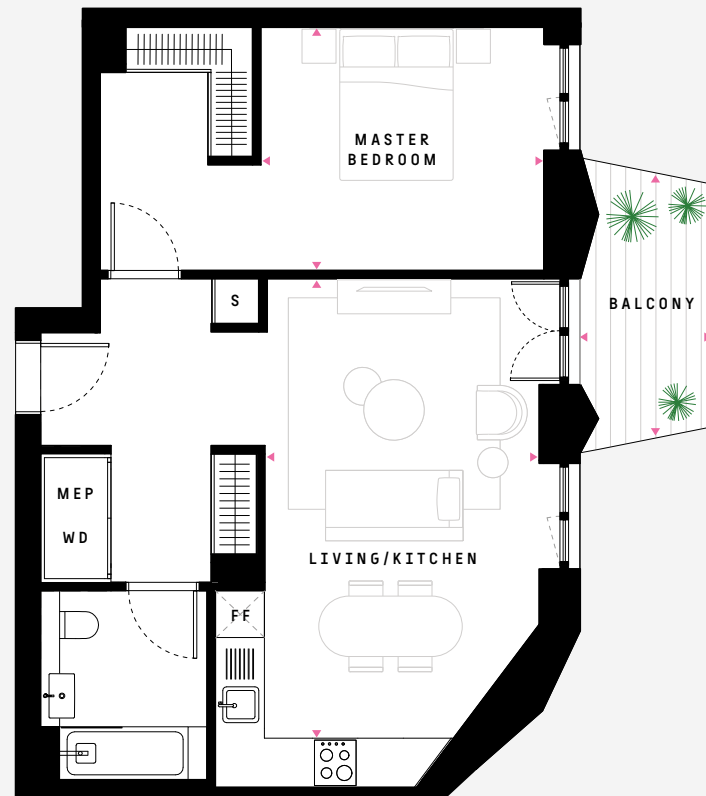


FF: Fridge Freezer MEP: Mechanical, Electrical, Plumbing S: Storage WD: Washer Dryer

TYPE 13B
1 BEDROOM: FLOOR 3

W.31

NSA	62.6 sq m	674 sq ft
LIVING/KITCHEN	6.07 × 3.62m	19'11" × 11'11"
MASTER BEDROOM	3.20 × 5.87m	10'6" × 19'3"
BALCONY	3.50 × 1.74m	11'6" × 5'9"

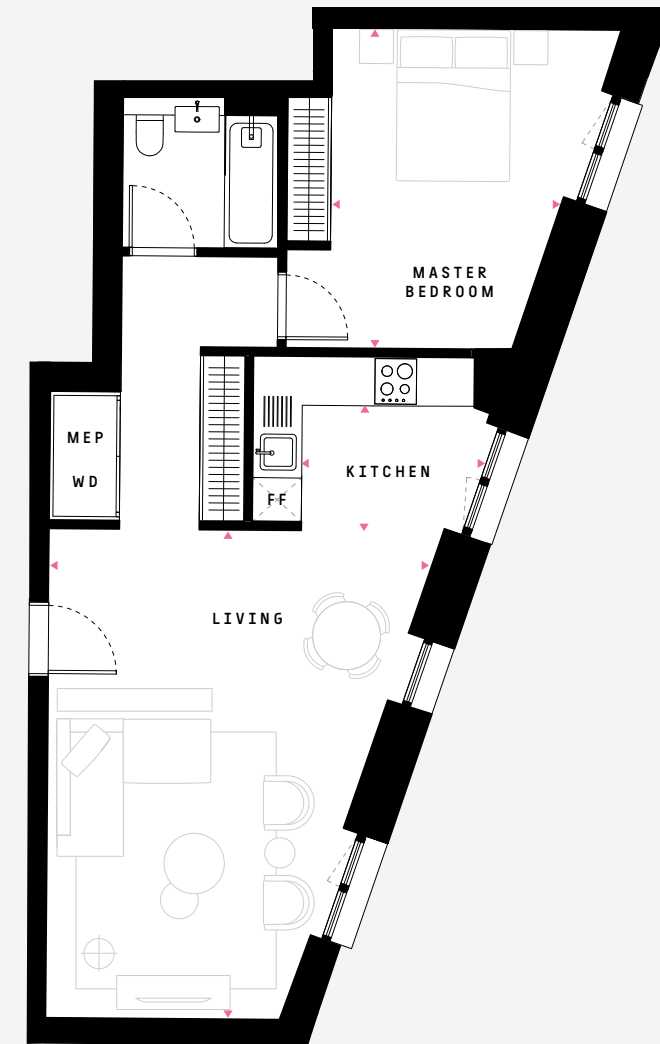
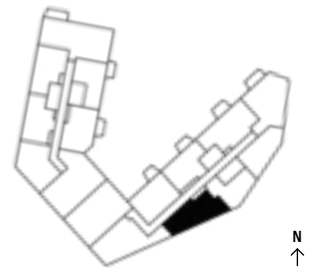


FF: Fridge Freezer MEP: Mechanical, Electrical, Plumbing S: Storage WD: Washer Dryer

TYPE 14
1 BEDROOM: FLOOR 3

E.35

NSA	63.2 sq m	680 sq ft
KITCHEN	1.65 × 2.16m	5'5" × 7'1"
LIVING	6.47 × 4.76m	21'3" × 15'7"
MASTER BEDROOM	4.23 × 3.04m	13'11" × 10'0"



FF: Fridge Freezer MEP: Mechanical, Electrical, Plumbing S: Storage WD: Washer Dryer

TYPE 14GT
1 BEDROOM: FLOOR 5

NSA	63.5 sq m	684 sq ft
KITCHEN	1.65 × 2.16m	5'5" × 7'1"
LIVING	6.42 × 4.76m	21'1" × 15'7"
MASTER BEDROOM	4.23 × 3.04m	13'11" × 10'0"
PRIVATE TERRACE	3.39 × 2.31m	11'1" × 7'7"

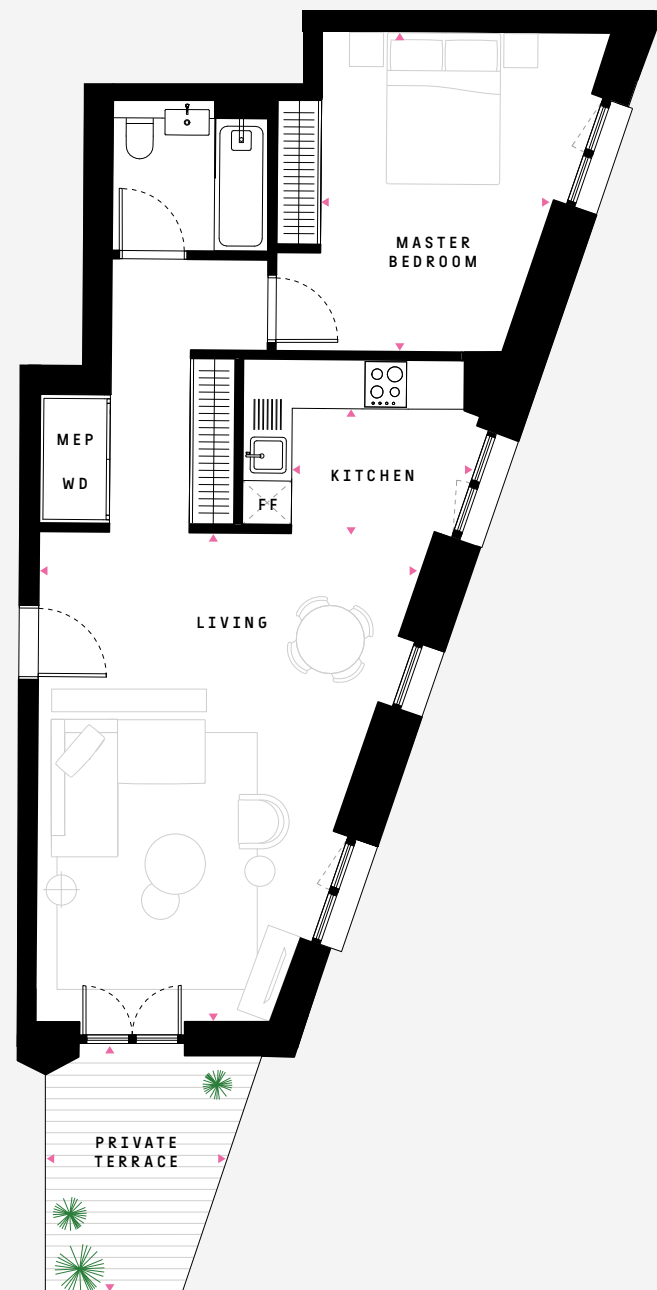
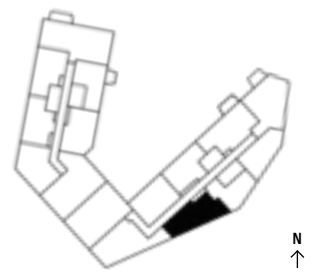
E.54



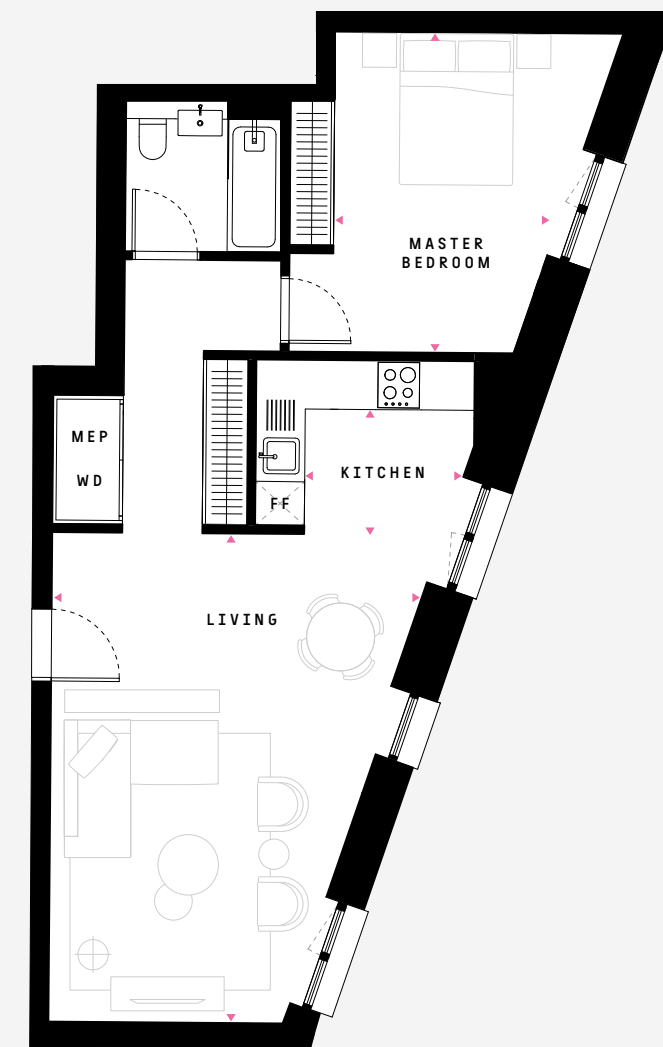
TYPE 14B
1 BEDROOM: FLOORS 2, 4

NSA	63.2 sq m	680 sq ft
KITCHEN	1.65 × 2.16m	5'5" × 7'1"
LIVING	6.47 × 4.76m	21'3" × 15'7"
MASTER BEDROOM	4.23 × 3.04m	13'11" × 10'0"

E.25 E.45



FF: Fridge Freezer MEP: Mechanical, Electrical, Plumbing S: Storage WD: Washer Dryer

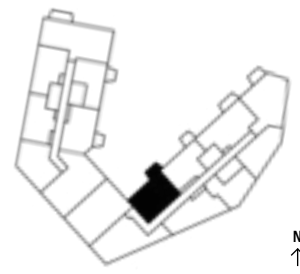


FF: Fridge Freezer MEP: Mechanical, Electrical, Plumbing S: Storage WD: Washer Dryer

TYPE 15
1 BEDROOM: FLOOR 4

E.48

NSA	64.6 sq m	695 sq ft
LIVING/KITCHEN	5.08 × 5.93m	16'8" × 19'5"
MASTER BEDROOM	4.43 × 3.01m	14'6" × 9'11"
BALCONY	3.50 × 1.74m	11'6" × 5'9"

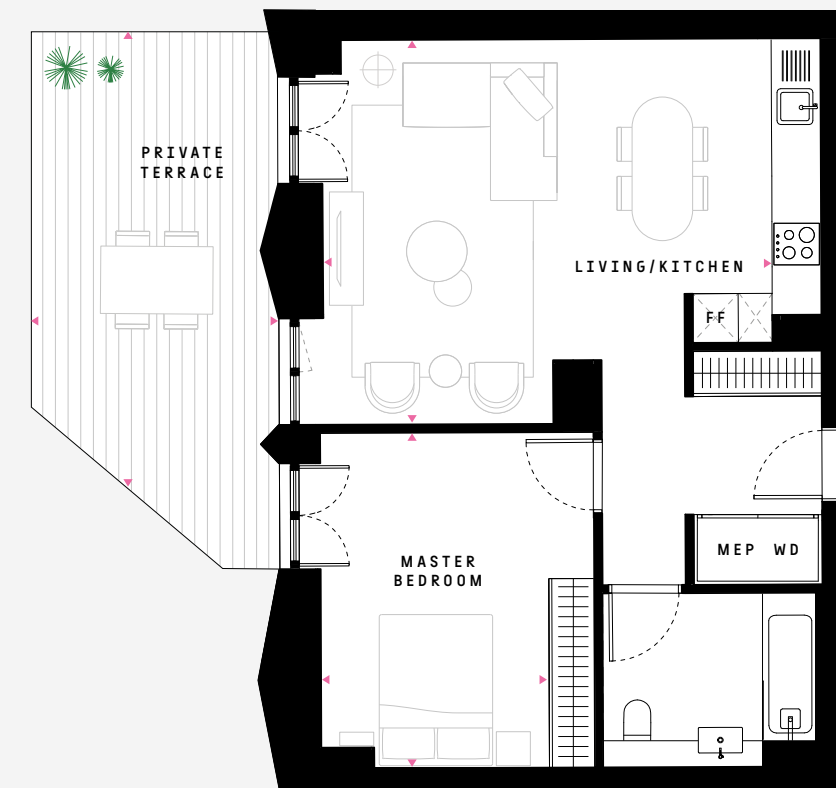
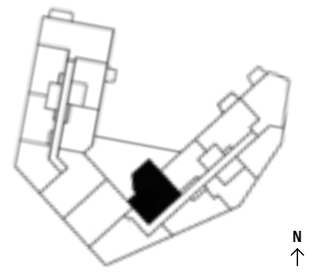


FF: Fridge Freezer MEP: Mechanical, Electrical, Plumbing S: Storage WD: Washer Dryer

TYPE 15GT
1 BEDROOM: FLOOR 2

E.28

NSA	64.6 sq m	695 sq ft
LIVING/KITCHEN	5.08 × 5.93m	16'8" × 19'5"
MASTER BEDROOM	4.43 × 3.01m	14'6" × 9'11"
PRIVATE TERRACE	6.04 × 3.29m	19'10" × 10'10"



FF: Fridge Freezer MEP: Mechanical, Electrical, Plumbing S: Storage WD: Washer Dryer

TYPE 15B
1 BEDROOM: FLOOR 3

E.38

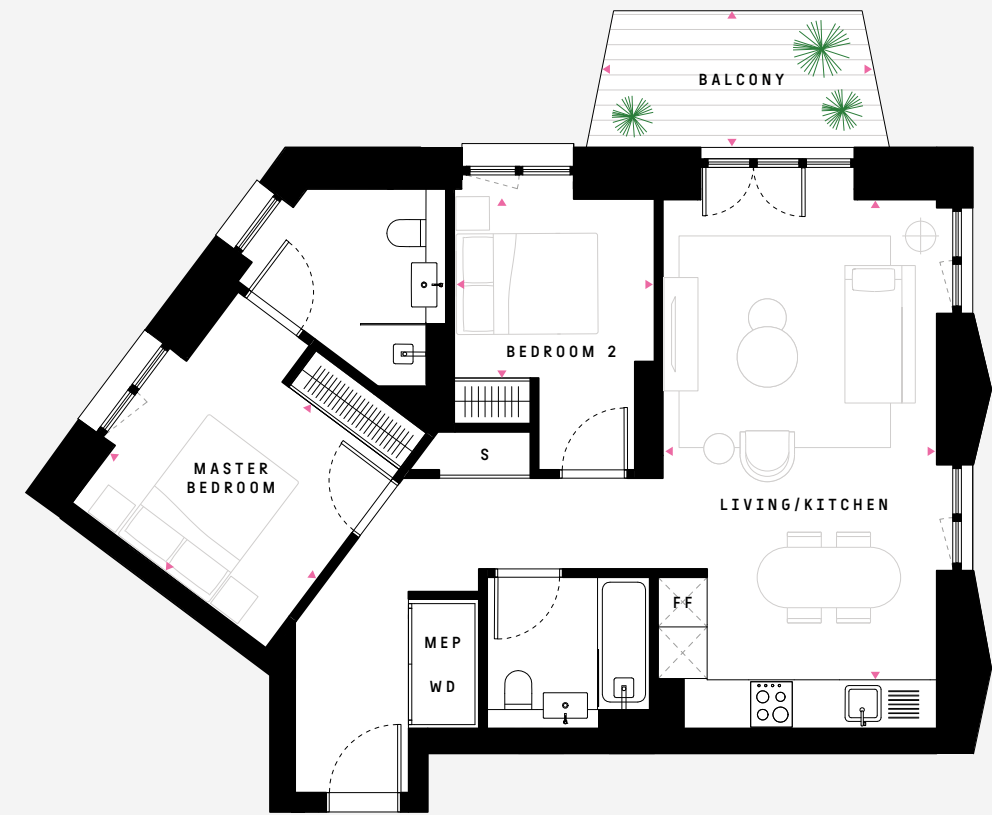
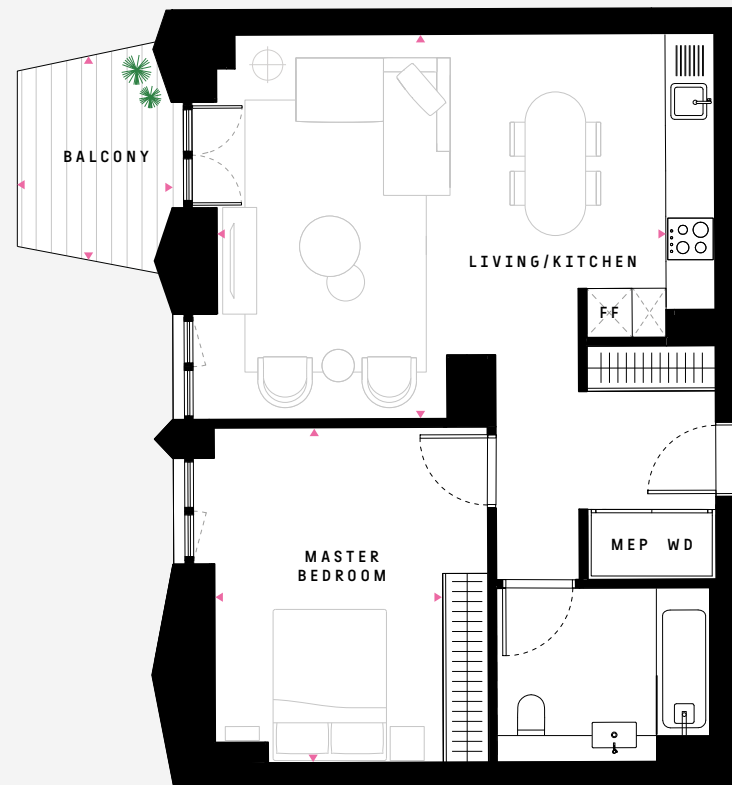
NSA	64.6 sq m	695 sq ft
LIVING/KITCHEN	5.08 × 5.93m	16'8" × 19'5"
MASTER BEDROOM	4.43 × 3.01m	14'6" × 9'11"
BALCONY	2.78 × 2.05m	9'1" × 6'9"



TYPE 16
2 BEDROOM: 7, 9, 11, 13, 15, 17

W.75 W.95 W.115
W.135 W.155 W.175

NSA	71.9 sq m	774 sq ft
LIVING/KITCHEN	3.62 × 6.35m	11'11" × 20'10"
MASTER BEDROOM	2.94 × 3.20m	9'8" × 10'6"
BEDROOM 2	2.65 × 2.41m	8'8" × 7'11"
BALCONY	3.62 × 1.80m	11'11" × 5'11"



TYPE 16B
2 BEDROOM: FLOORS 8, 10, 12, 14, 16, 18

W.85 W.105 W.125
W.145 W.165 W.185

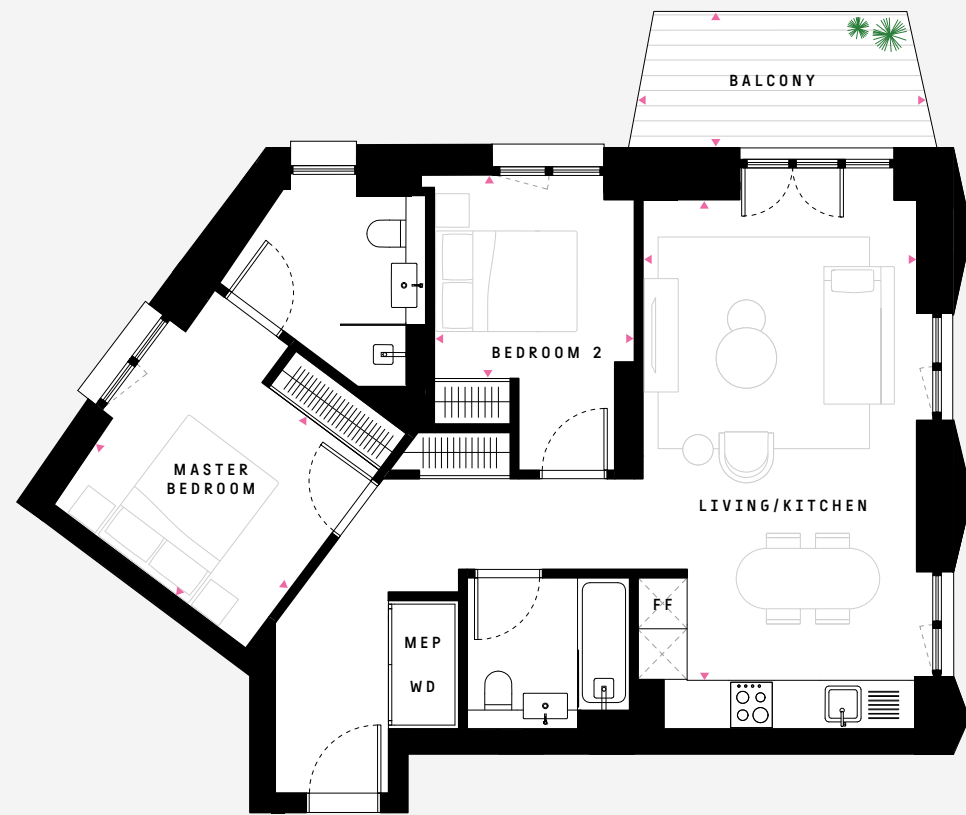
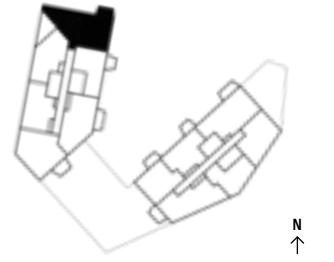
NSA	72.0 sq m	775 sq ft
LIVING/KITCHEN	3.62 × 6.35m	11'11" × 20'10"
MASTER BEDROOM	2.94 × 3.20m	9'8" × 10'6"
BEDROOM 2	2.65 × 2.41m	8'8" × 7'11"
BALCONY	3.62 × 1.80m	11'11" × 5'11"



TYPE 16BGT
2 BEDROOM: FLOOR 6

W.65

NSA	72.0 sq m	775 sq ft
LIVING/KITCHEN	3.62 × 6.35m	11'11" × 20'10"
MASTER BEDROOM	2.94 × 3.20m	9'8" × 10'6"
BEDROOM 2	2.65 × 2.41m	8'8" × 7'11"
BALCONY	3.62 × 1.80m	11'11" × 5'11"
PRIVATE TERRACE	3.15 × 5.10m	10'4" × 16'9"



TYPE 17
2 BEDROOM: FLOORS 7, 9, 11

E.74 E.94 E.114

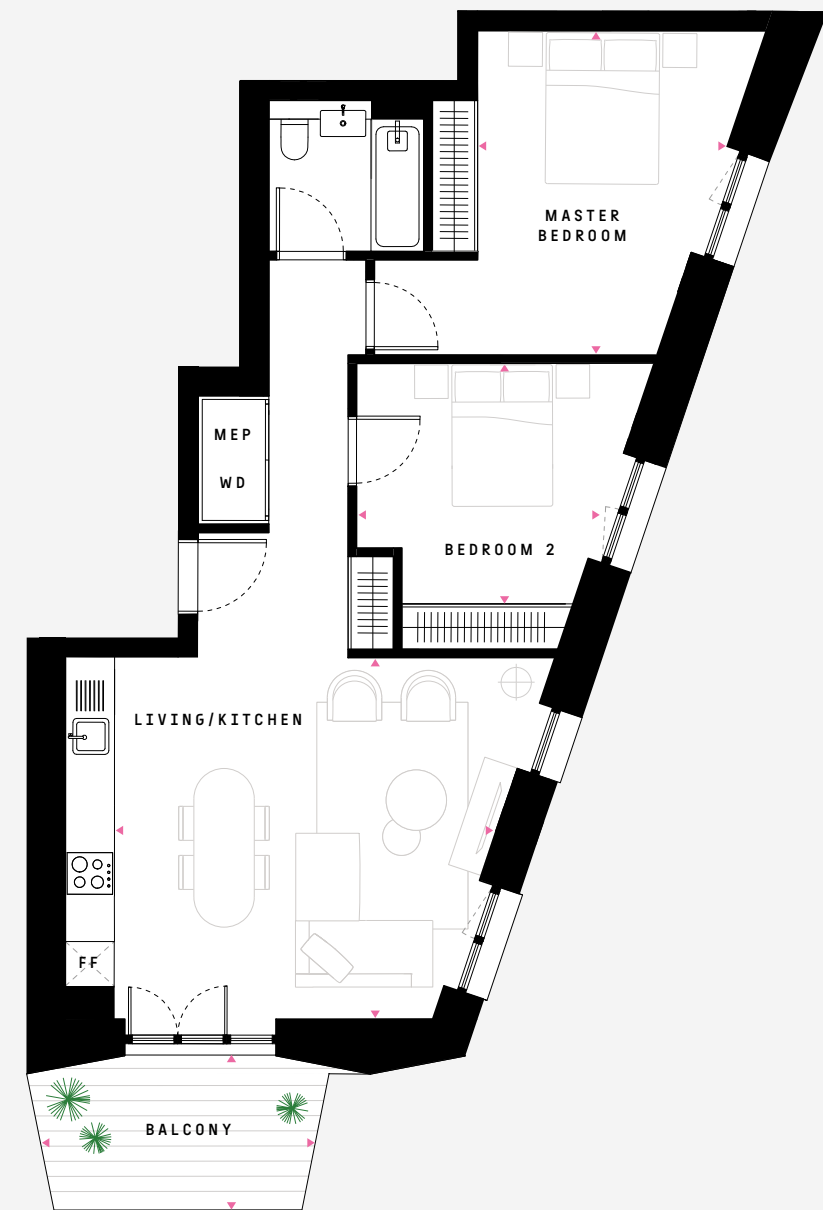
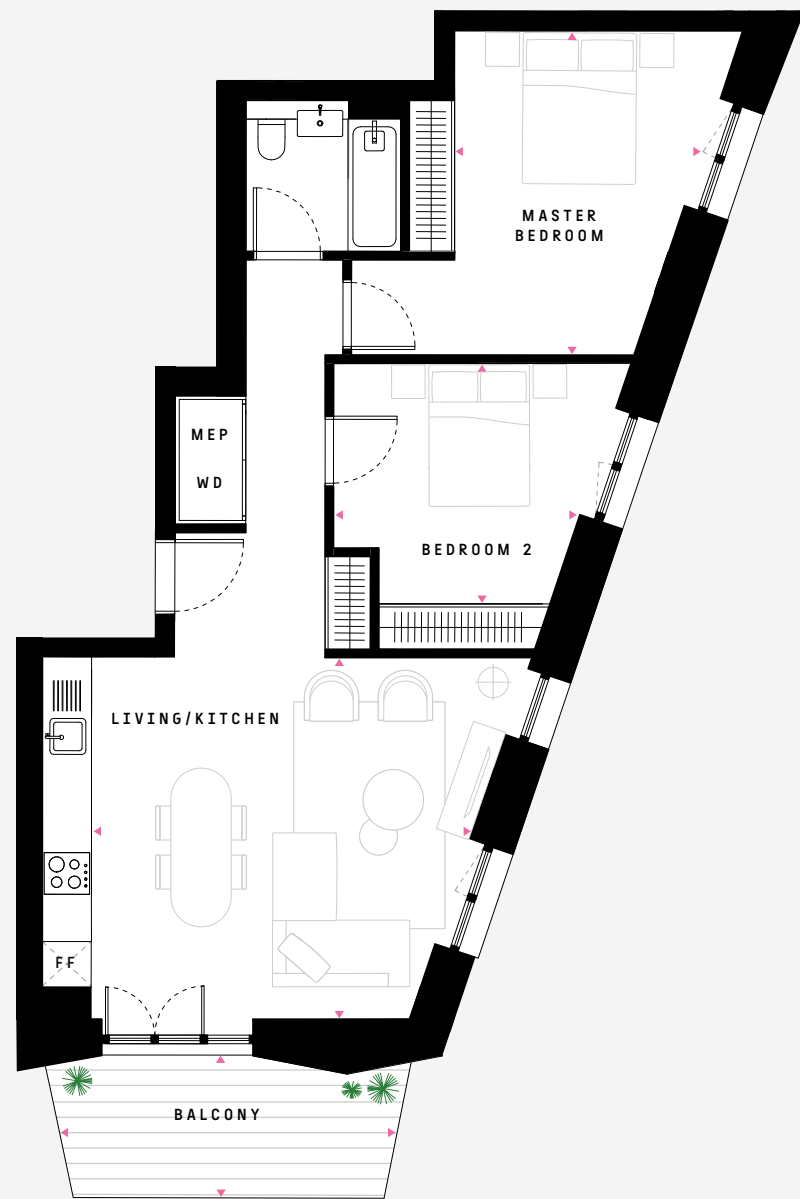
NSA	71.9 sq m	774 sq ft
LIVING/KITCHEN	4.78 × 5.04m	15'8" × 16'6"
MASTER BEDROOM	3.68 × 3.07m	12'1" × 10'1"
BEDROOM 2	3.18 × 3.22m	10'5" × 10'7"
BALCONY	1.74 × 4.39m	5'9" × 14'5"



TYPE 17B
2 BEDROOM: FLOORS 6, 8, 10, 12

E.64 E.84 E.104
 E.124

NSA	72.0 sq m	775 sq ft
LIVING/KITCHEN	4.78 × 5.04m	15'8" × 16'6"
MASTER BEDROOM	3.68 × 3.07m	12'1" × 10'1"
BEDROOM 2	3.18 × 3.22m	10'5" × 10'7"
BALCONY	2.05 × 3.63m	6'9" × 11'11"



TYPE 18
2 BEDROOM: FLOORS 6, 8, 10, 12, 14, 16, 18

NSA	73.3 sq m	789 sq ft
LIVING/KITCHEN	5.61 × 5.22m	18'5" × 17'2"
MASTER BEDROOM	3.27 × 3.00m	10'9" × 9'10"
BEDROOM 2	3.75 × 2.51m	12'4" × 8'3"
BALCONY	4.40 × 1.75m	14'5" × 5'9"

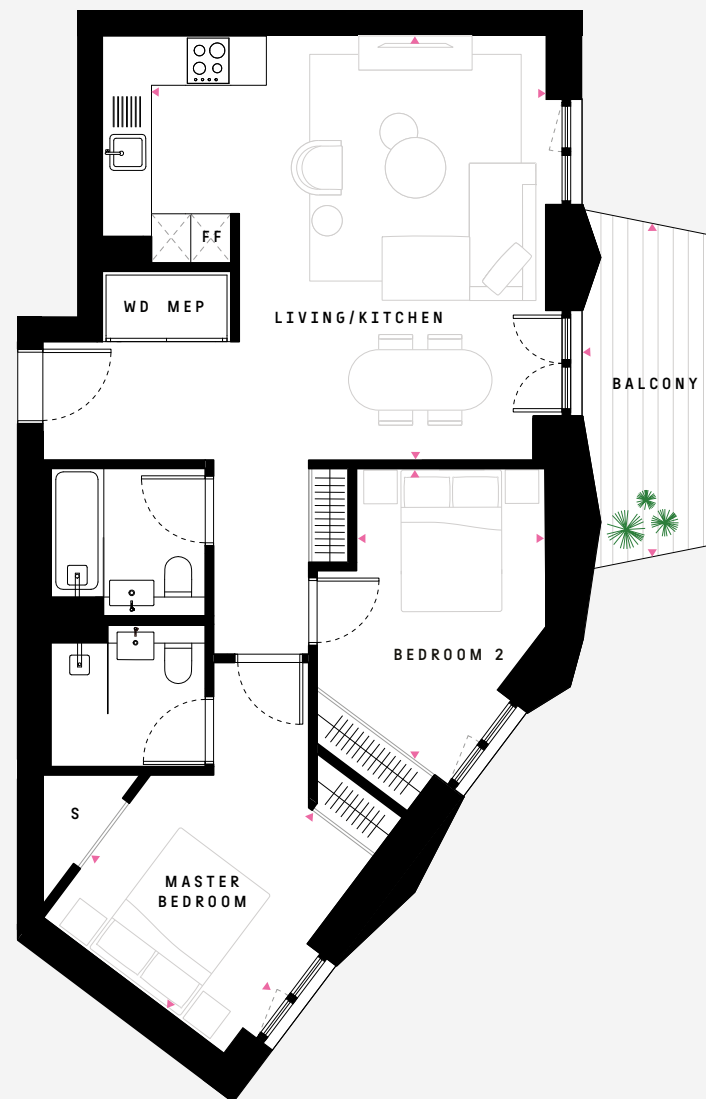
W.61 W.81 W.101
W.121 W.141 W.161
W.181



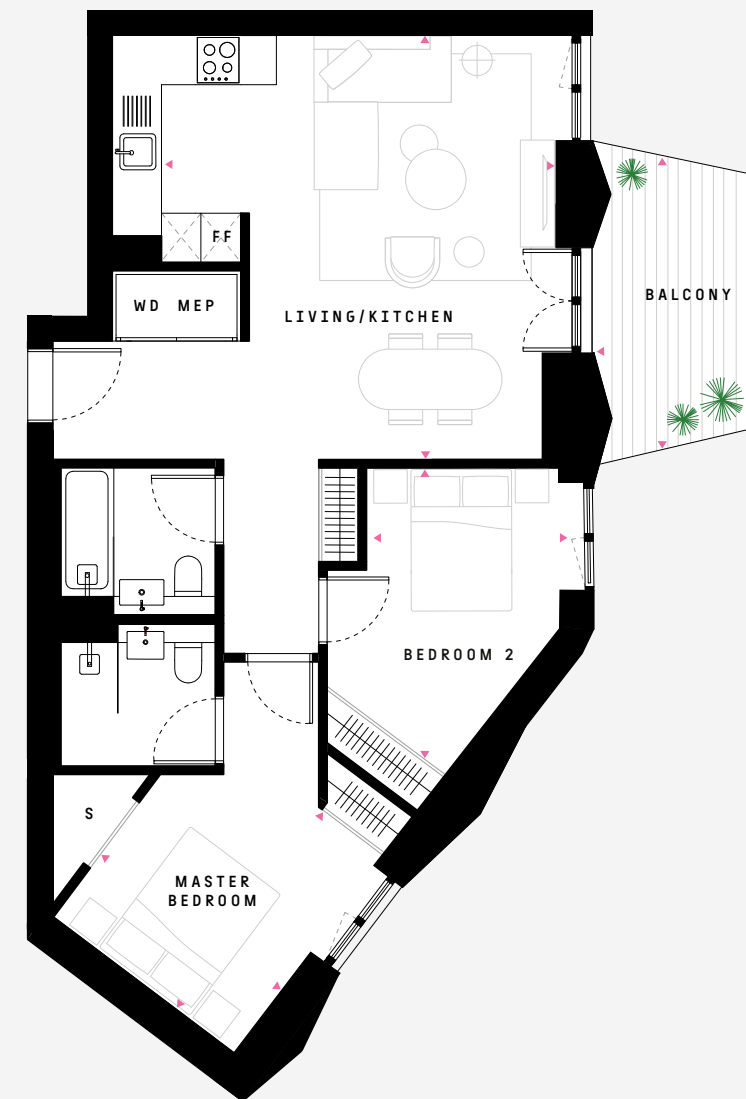
TYPE 18B
2 BEDROOM: FLOORS 7, 9, 11, 13, 15, 17

NSA	73.2 sq m	788 sq ft
LIVING/KITCHEN	5.61 × 5.22m	18'5" × 17'2"
MASTER BEDROOM	3.27 × 3.48m	10'9" × 11'5"
BEDROOM 2	3.75 × 2.51m	12'4" × 8'3"
BALCONY	3.64 × 2.05m	11'11" × 6'9"

W.71 W.91 W.111
W.131 W.151 W.171



FF: Fridge Freezer MEP: Mechanical, Electrical, Plumbing S: Storage WD: Washer Dryer



FF: Fridge Freezer MEP: Mechanical, Electrical, Plumbing S: Storage WD: Washer Dryer

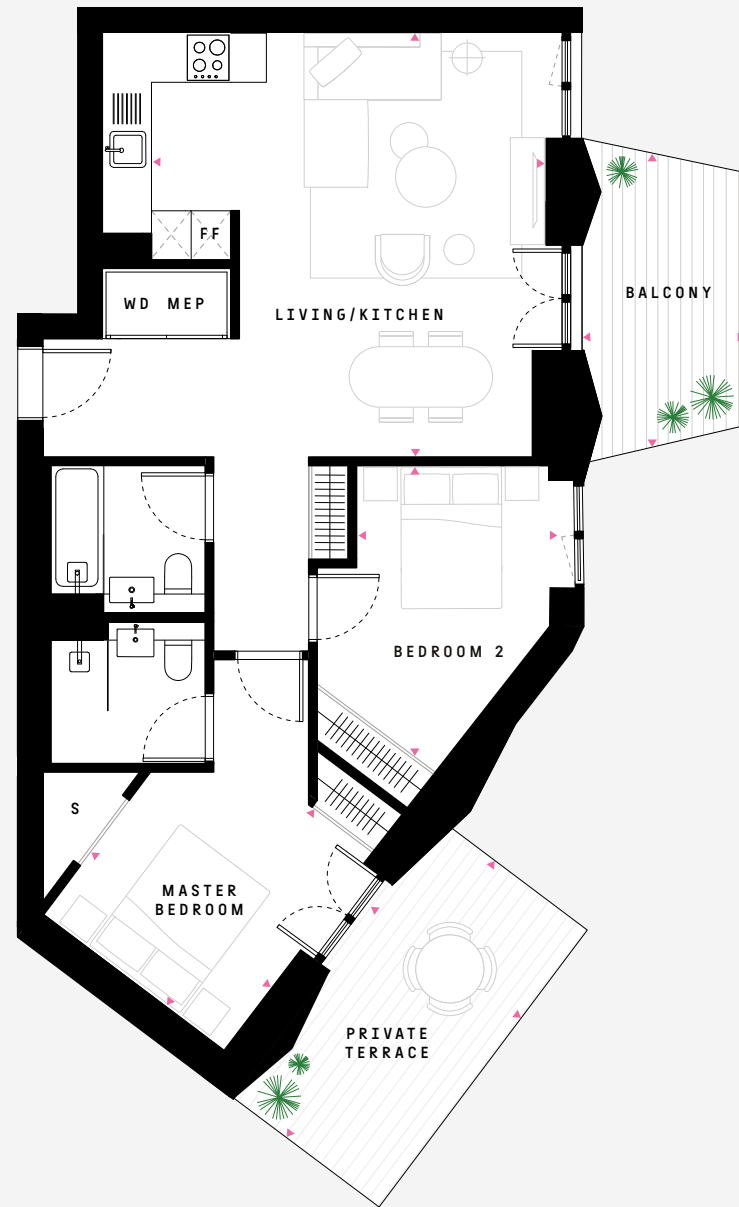
TYPE 18BGT
2 BEDROOM: FLOOR 5

W.51

NSA	73.2 sq m	788 sq ft
LIVING/KITCHEN	5.61 × 5.22m	18'5" × 17'2"
MASTER BEDROOM	3.27 × 3.00m	10'9" × 9'10"
BEDROOM 2	3.75 × 2.51m	12'4" × 8'3"
BALCONY	3.63 × 2.05m	11'11" × 6'9"
PRIVATE TERRACE	4.46 × 2.25m	14'8" × 7'5"



N ↑



FF: Fridge Freezer MEP: Mechanical, Electrical, Plumbing S: Storage WD: Washer Dryer

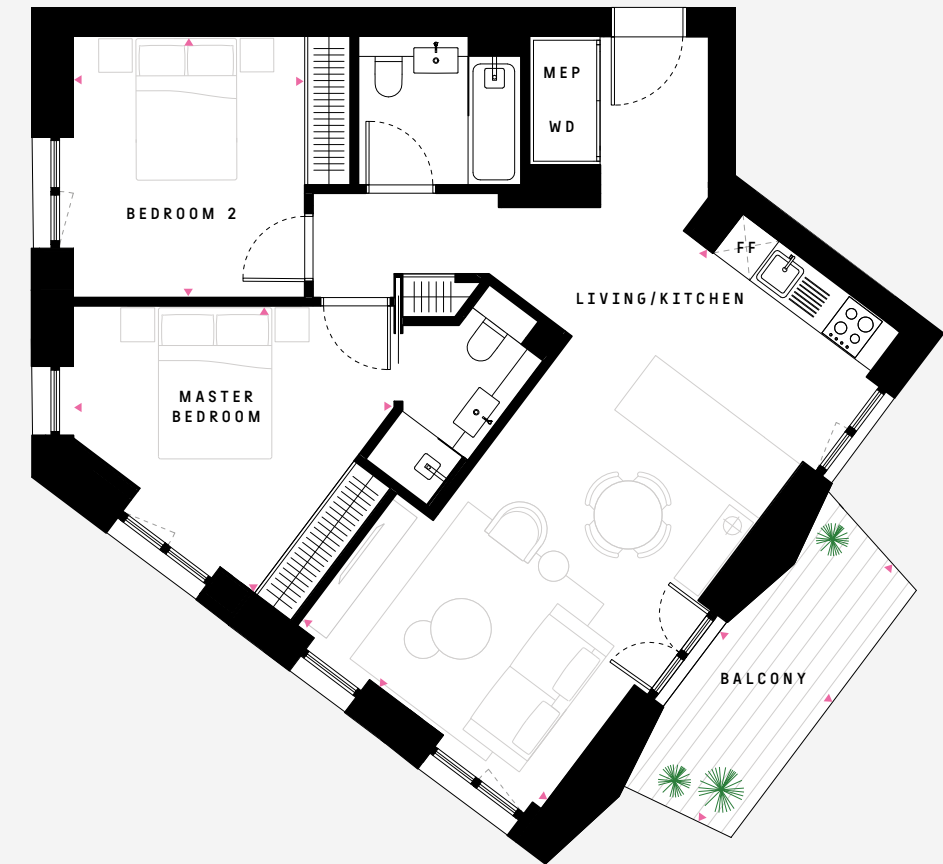
TYPE 19
2 BEDROOM: FLOORS 7, 9, 11, 13, 15, 17

W.72 W.92 W.112
W.132 W.152 W.172

NSA	76.0 sq m	818 sq ft
LIVING/KITCHEN	7.24 × 4.03m	23'9" × 13'3"
MASTER BEDROOM	3.45 × 4.24m	11'4" × 13'11"
BEDROOM 2	3.45 × 3.06m	11'4" × 10'0"
BALCONY	4.38 × 1.75m	14'4" × 5'9"



N ↑



FF: Fridge Freezer MEP: Mechanical, Electrical, Plumbing S: Storage WD: Washer Dryer

TYPE 19B
2 BEDROOM: FLOORS 6, 8, 10, 12, 14, 16, 18

W.62 W.82 W.102
 W.122 W.142 W.162
 W.182

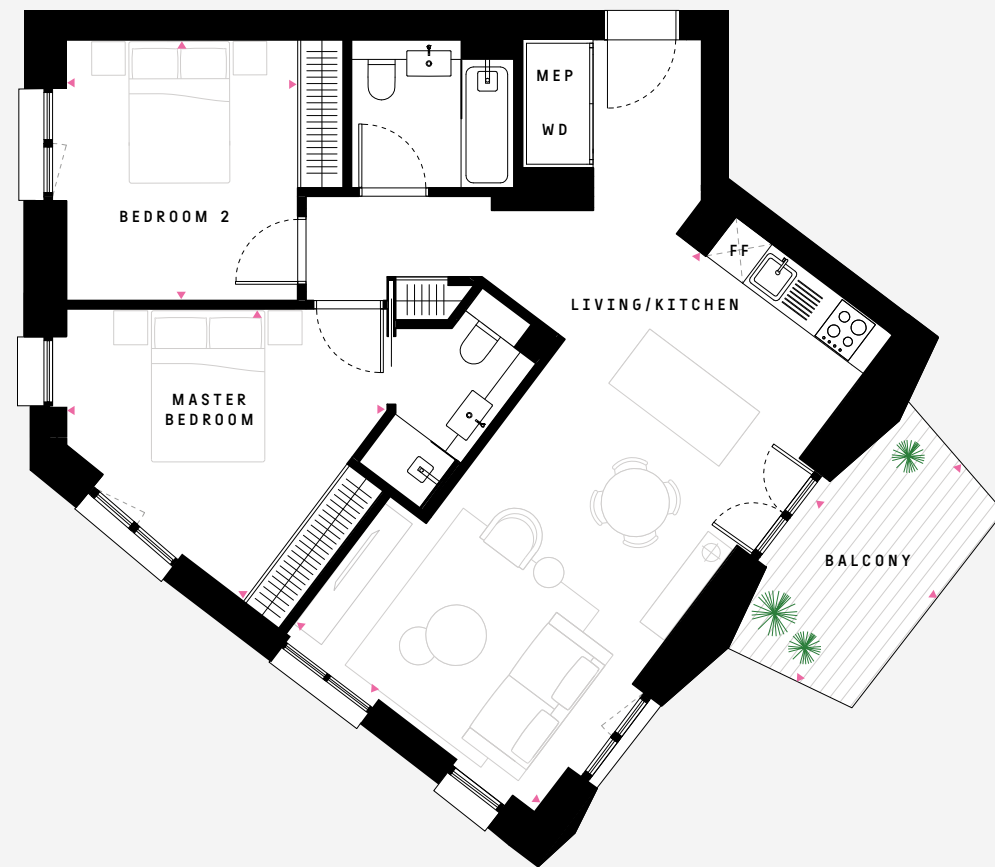
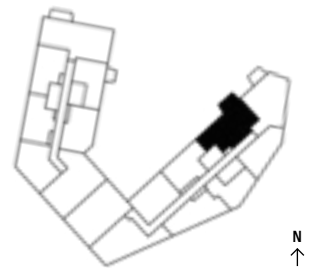
NSA	76.0 sq m	818 sq ft
LIVING/KITCHEN	7.24 × 4.03m	23'9" × 13'3"
MASTER BEDROOM	3.45 × 4.24m	11'4" × 13'11"
BEDROOM 2	3.45 × 3.06m	11'4" × 10'0"
BALCONY	3.64 × 2.04m	11'11" × 6'8"



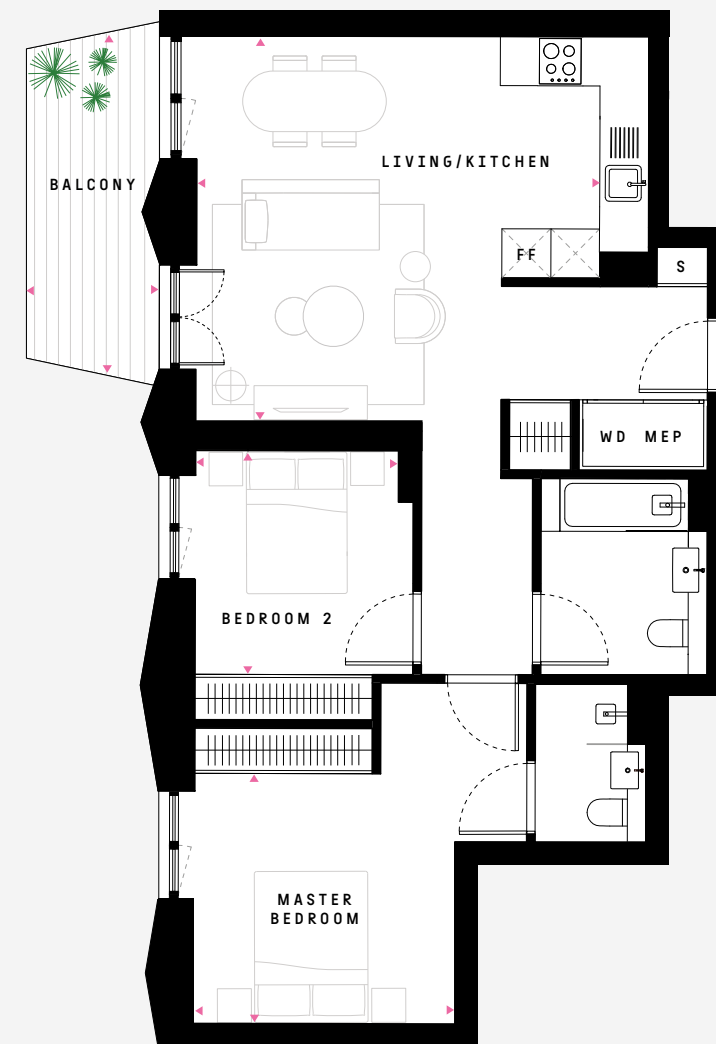
TYPE 20
2 BEDROOM: FLOORS 2, 4

E.21 E.41

NSA	77.3 sq m	832 sq ft
LIVING/KITCHEN	5.11 × 5.34m	16'9" × 17'6"
MASTER BEDROOM	3.31 × 3.44m	10'10" × 11'3"
BEDROOM 2	2.96 × 2.88m	9'9" × 9'5"
BALCONY	4.39 × 1.75m	14'5" × 5'9"



FF: Fridge Freezer MEP: Mechanical, Electrical, Plumbing S: Storage WD: Washer Dryer

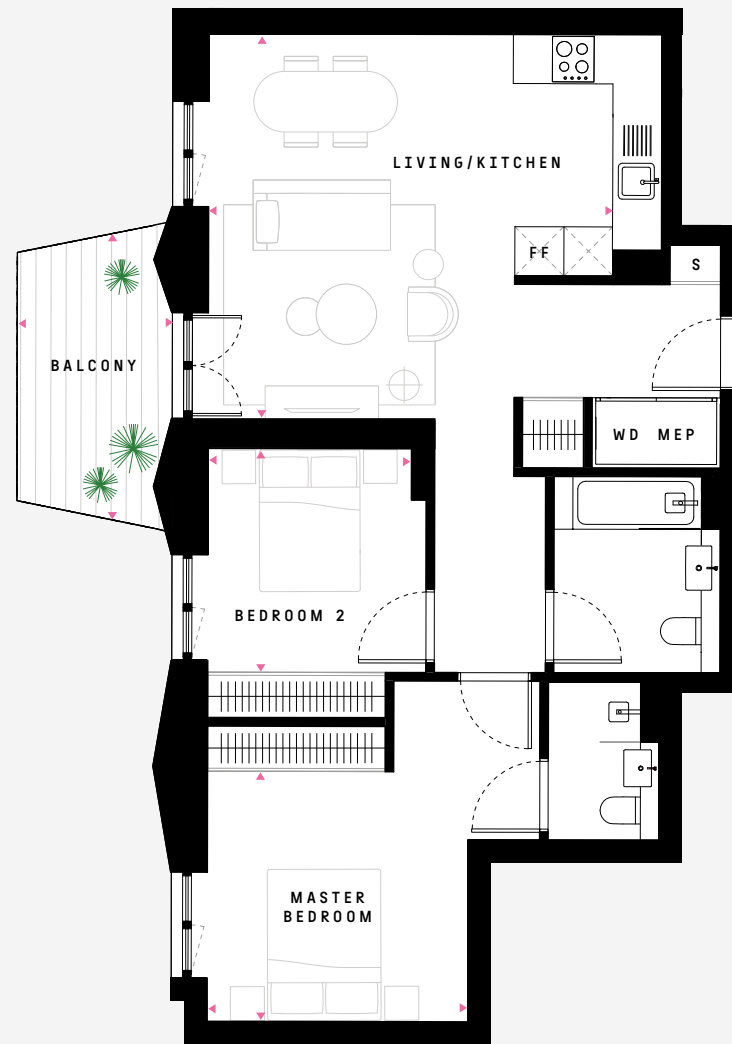
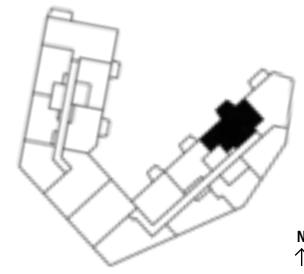


FF: Fridge Freezer MEP: Mechanical, Electrical, Plumbing S: Storage WD: Washer Dryer

TYPE 20B
2 BEDROOM: FLOOR 3

NSA	77.3 sq m	832 sq ft
LIVING/KITCHEN	5.11 × 5.34m	16'9" × 17'6"
MASTER BEDROOM	3.31 × 3.44m	10'10" × 11'3"
BEDROOM 2	2.96 × 2.88m	9'9" × 9'5"
BALCONY	3.63 × 2.05m	11'11" × 6'9"

E.31



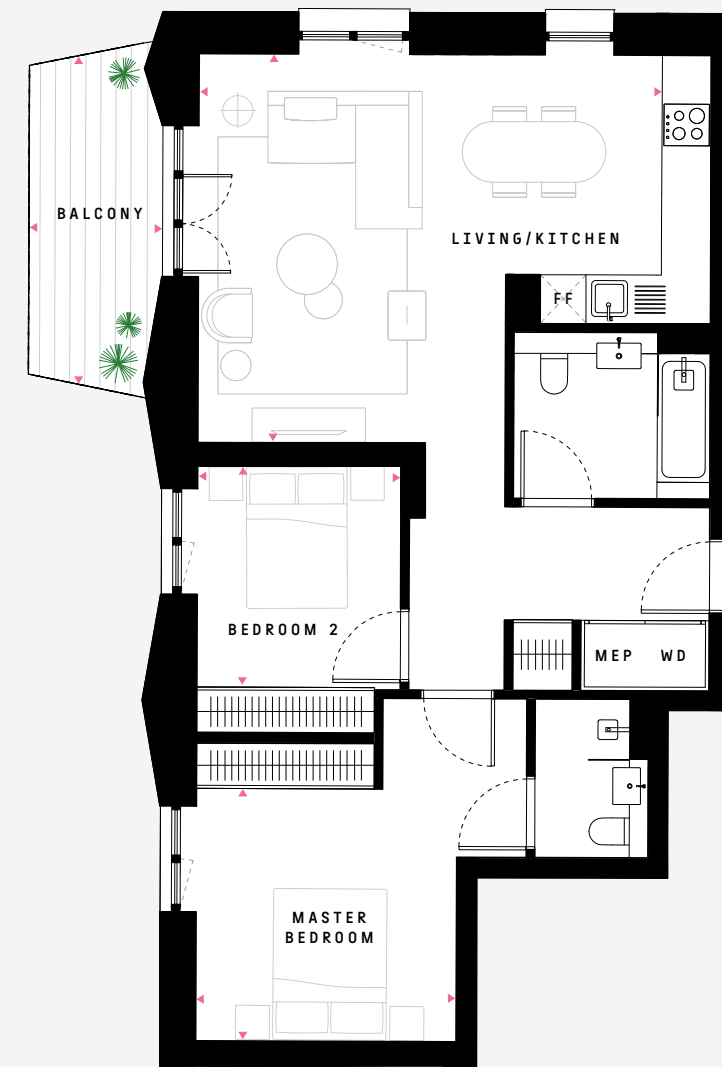
FF: Fridge Freezer MEP: Mechanical, Electrical, Plumbing S: Storage WD: Washer Dryer

TYPE 21
2 BEDROOM: FLOORS 6, 8, 10, 12

NSA	79.8 sq m	859 sq ft
LIVING/KITCHEN	5.14 × 6.12m	16'10" × 20'1"
MASTER BEDROOM	3.31 × 3.44m	10'10" × 11'3"
BEDROOM 2	2.93 × 2.69m	9'7" × 8'10"
BALCONY	4.39 × 1.75m	14'5" × 5'9"

E.61 E.81 E.101

E.121



FF: Fridge Freezer MEP: Mechanical, Electrical, Plumbing S: Storage WD: Washer Dryer

TYPE 21B
2 BEDROOM: FLOORS 7, 9, 11

NSA	79.8 sq m	859 sq ft
LIVING/KITCHEN	5.14 × 6.12m	16'10" × 20'1"
MASTER BEDROOM	3.31 × 3.44m	10'10" × 11'3"
BEDROOM 2	2.93 × 2.69m	9'7" × 8'10"
BALCONY	3.63 × 2.05m	11'11" × 6'9"

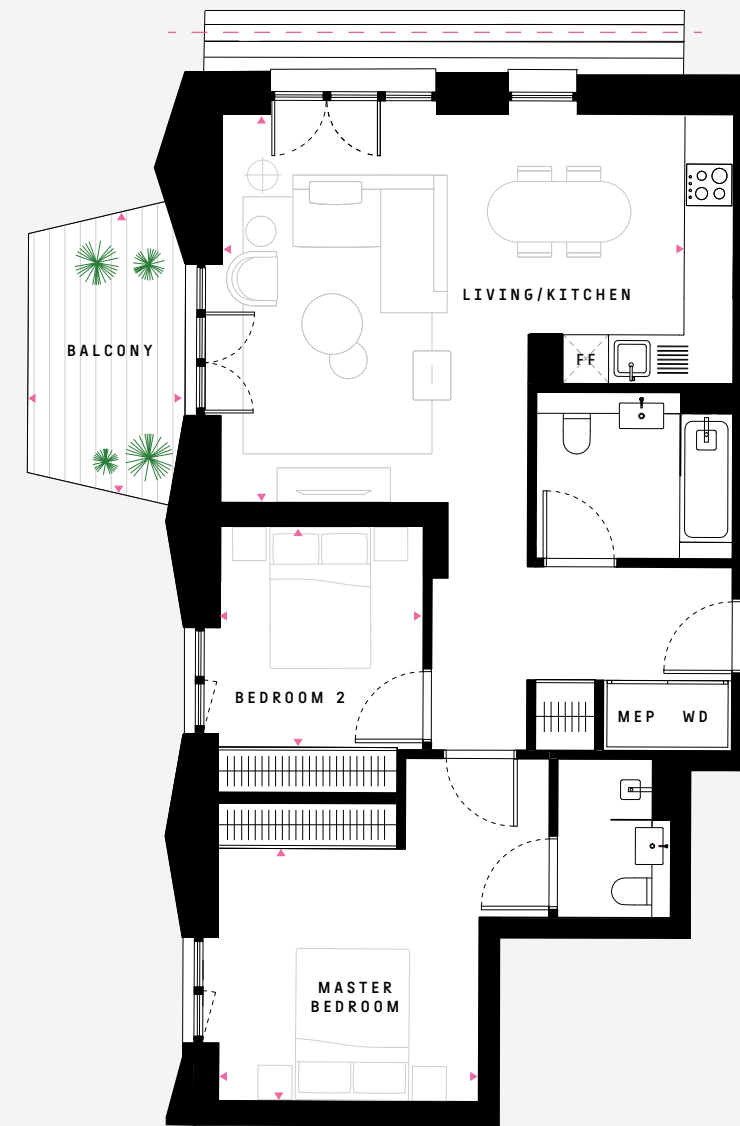
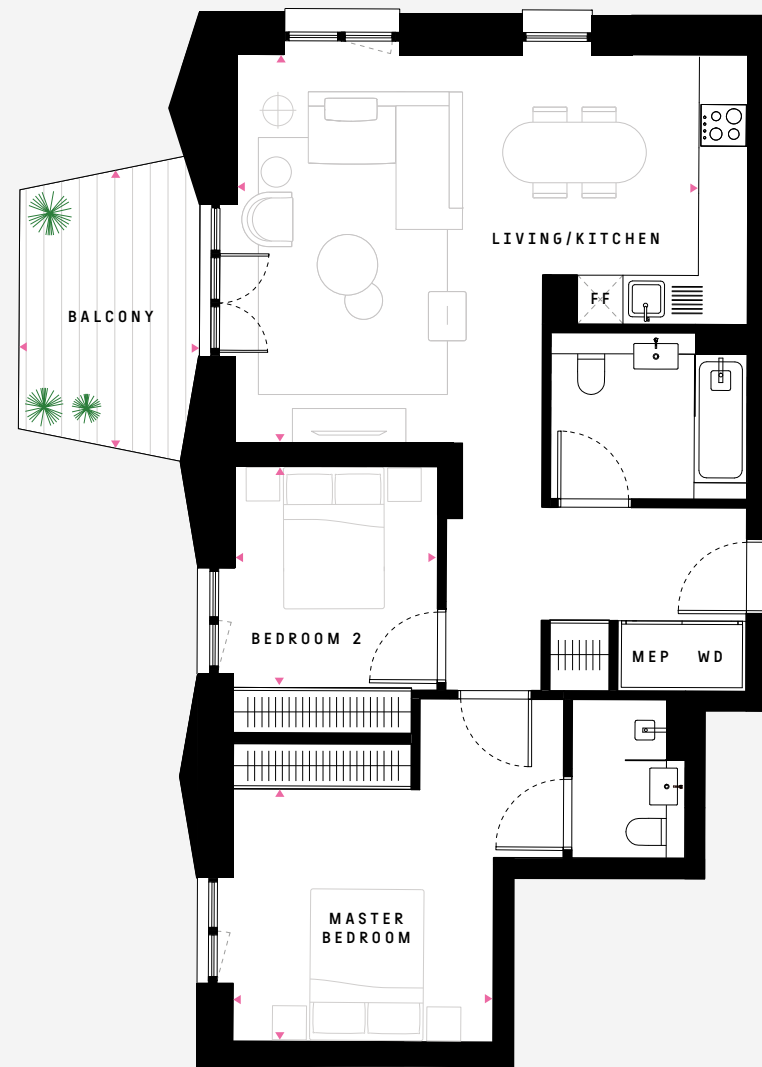
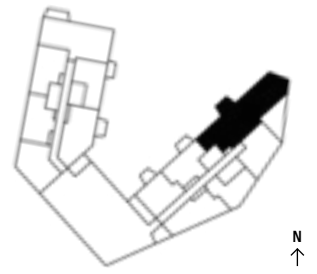
E.71 E.91 E.111



TYPE 21BGT
2 BEDROOM: FLOOR 5

NSA	79.7 sq m	858 sq ft
LIVING/KITCHEN	5.14 × 6.12m	16'10" × 20'1"
MASTER BEDROOM	3.31 × 3.44m	10'10" × 11'3"
BEDROOM 2	2.93 × 2.69m	9'7" × 8'10"
BALCONY	3.63 × 2.05m	11'11" × 6'9"
PRIVATE TERRACE	9.08 × 6.27m	29'9" × 20'7"

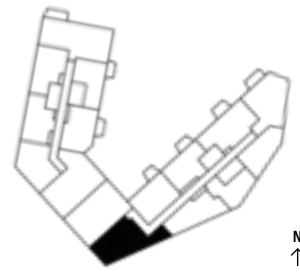
E.51



TYPE 22
2 BEDROOM: FLOOR 3

E.36

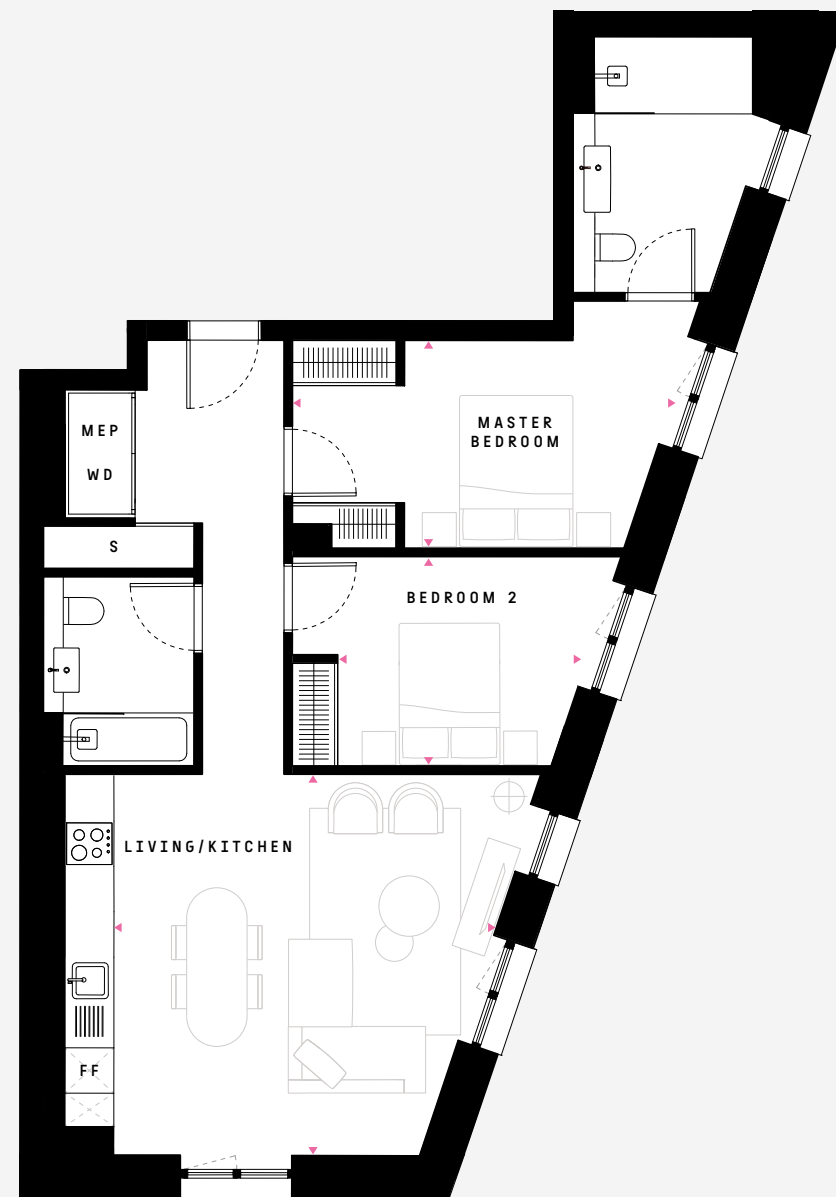
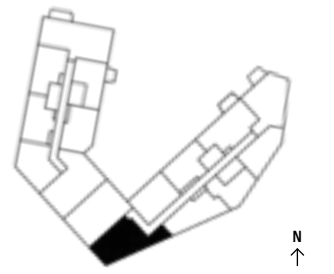
NSA	82.2 sq m	885 sq ft
LIVING/KITCHEN	5.04 × 5.09m	16'6" × 16'8"
MASTER BEDROOM	2.75 × 3.46m	9'0" × 11'4"
BEDROOM 2	2.77 × 3.23m	9'1" × 10'7"



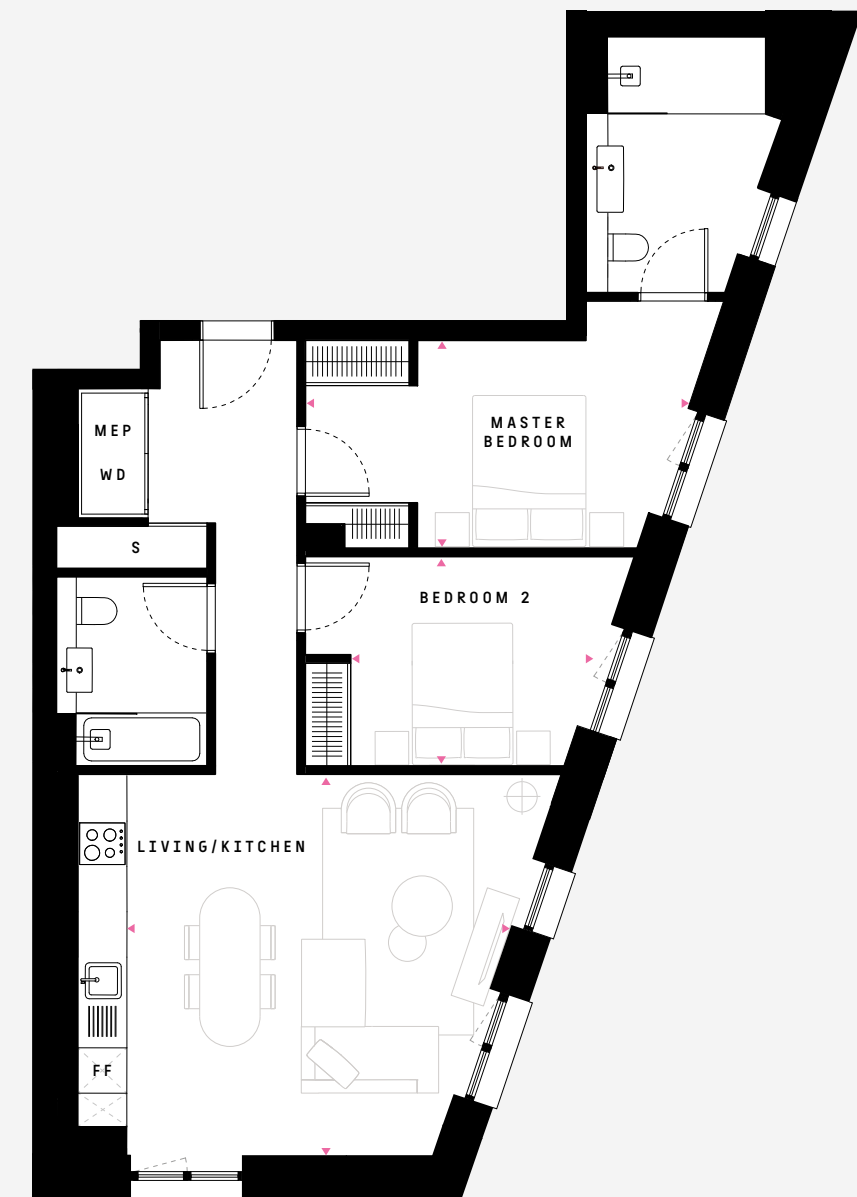
TYPE 22B
2 BEDROOM: FLOORS 2, 4

E.26 E.46

NSA	82.0 sq m	883 sq ft
LIVING/KITCHEN	5.04 × 5.09m	16'6" × 16'8"
MASTER BEDROOM	2.75 × 3.46m	9'0" × 11'4"
BEDROOM 2	2.77 × 3.23m	9'1" × 10'7"



FF: Fridge Freezer MEP: Mechanical, Electrical, Plumbing S: Storage WD: Washer Dryer

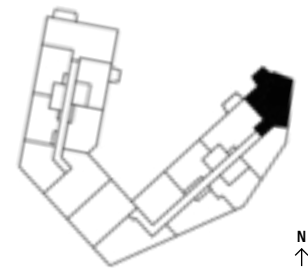


FF: Fridge Freezer MEP: Mechanical, Electrical, Plumbing S: Storage WD: Washer Dryer

TYPE 23
2 BEDROOM: FLOORS 2, 4

E.22 E.42

NSA	84.4 sq m	908 sq ft
LIVING/KITCHEN	4.79 × 5.65m	15'9" × 18'6"
MASTER BEDROOM	3.32 × 3.03m	10'11" × 9'11"
BEDROOM 2	3.16 × 3.03m	10'4" × 9'11"
BALCONY	3.63 × 2.04m	11'11" × 6'8"



N
↑



FF: Fridge Freezer MEP: Mechanical, Electrical, Plumbing S: Storage WD: Washer Dryer

TYPE 23B
2 BEDROOM: FLOOR 3

E.32

NSA	84.3 sq m	907 sq ft
LIVING/KITCHEN	4.79 × 5.65m	15'9" × 18'6"
MASTER BEDROOM	3.32 × 3.03m	10'11" × 9'11"
BEDROOM 2	3.16 × 3.03m	10'4" × 9'11"
BALCONY	4.40 × 1.75m	14'5" × 5'9"



N
↑

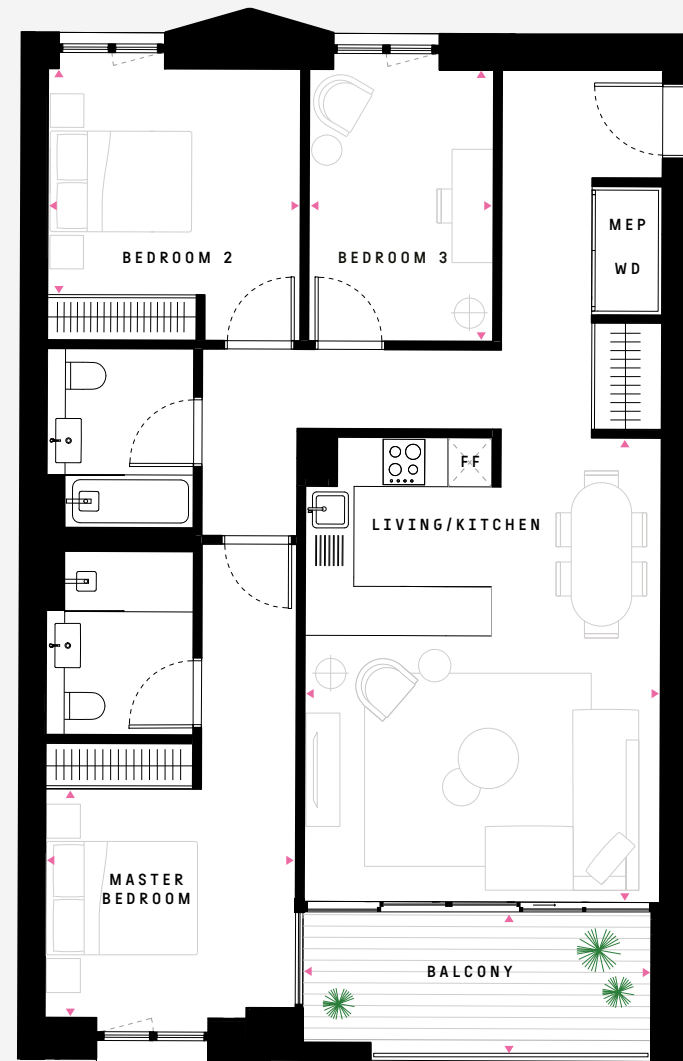
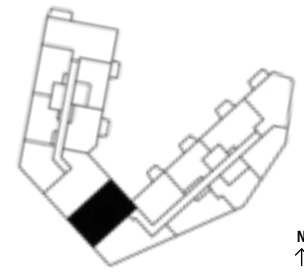


FF: Fridge Freezer MEP: Mechanical, Electrical, Plumbing S: Storage WD: Washer Dryer

TYPE 24
3 BEDROOM: FLOOR 3

NSA	95.0 sq m	1,023 sq ft
LIVING/KITCHEN	6.25 × 4.71m	20'6" × 15'5"
MASTER BEDROOM	3.03 × 3.32m	9'11" × 10'11"
BEDROOM 2	2.99 × 3.35m	9'10" × 11'0"
BEDROOM 3	3.59 × 2.44m	11'9" × 8'0"
BALCONY	1.94 × 4.62m	6'4" × 15'2"

E.37

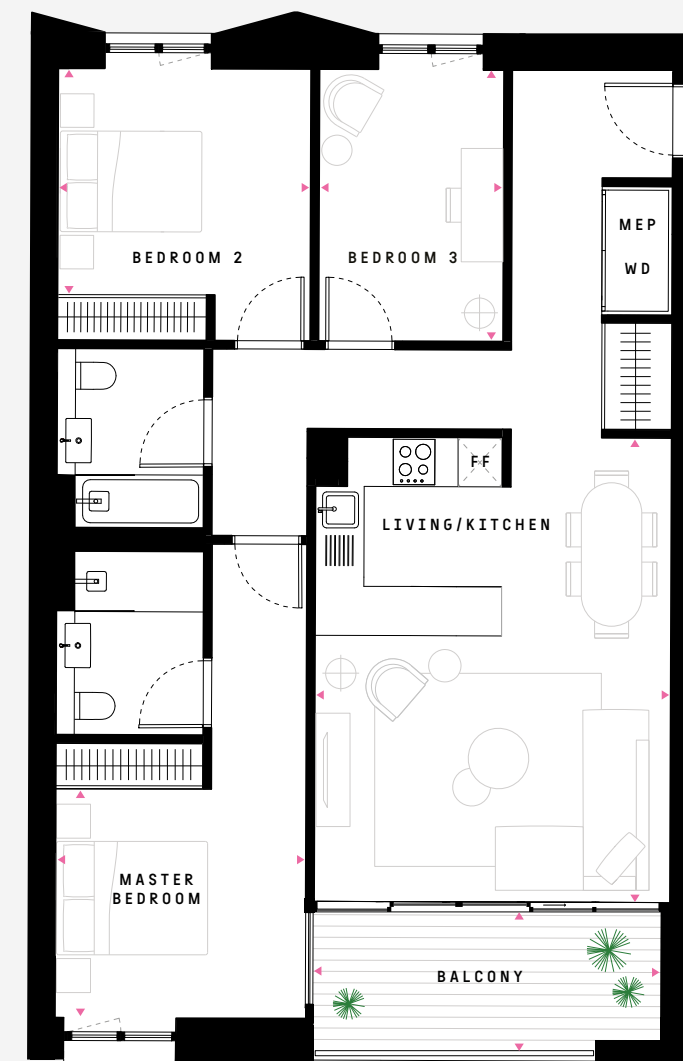
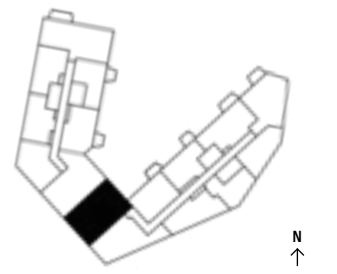


FF: Fridge Freezer MEP: Mechanical, Electrical, Plumbing S: Storage WD: Washer Dryer

TYPE 24B
3 BEDROOM: FLOOR 4

NSA	95.0 sq m	1,023 sq ft
LIVING/KITCHEN	6.25 × 4.71m	20'6" × 15'5"
MASTER BEDROOM	3.03 × 3.32m	9'11" × 10'11"
BEDROOM 2	2.99 × 3.35m	9'10" × 11'0"
BEDROOM 3	3.59 × 2.44m	11'9" × 8'0"
BALCONY	1.94 × 4.62m	6'4" × 15'2"

E.47

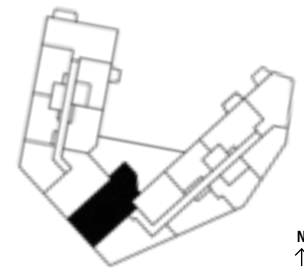


FF: Fridge Freezer MEP: Mechanical, Electrical, Plumbing S: Storage WD: Washer Dryer

TYPE 24BGT
3 BEDROOM: FLOOR 2

E.27

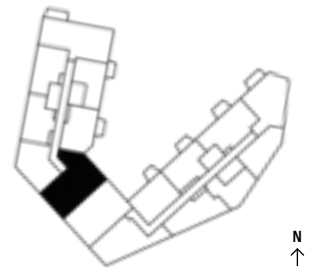
NSA	95.0 sq m	1,023 sq ft
LIVING/KITCHEN	6.25 × 4.71m	20'6" × 15'5"
MASTER BEDROOM	3.03 × 3.32m	9'11" × 10'11"
BEDROOM 2	2.99 × 3.35m	9'10" × 11'0"
BEDROOM 3	3.59 × 2.44m	11'9" × 8'0"
BALCONY	1.94 × 4.62m	6'4" × 15'2"
PRIVATE TERRACE	4.57 × 6.84m	15'0" × 22'5"



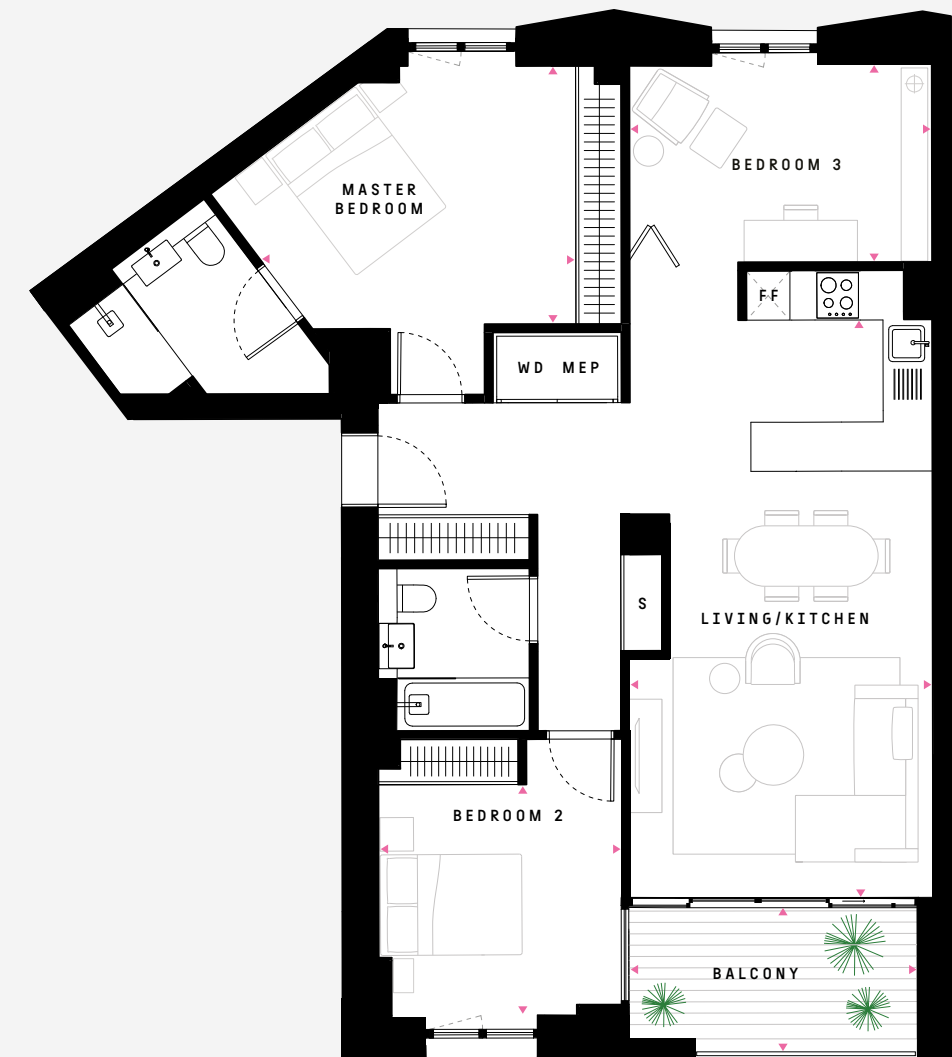
TYPE 25
3 BEDROOM: FLOOR 3

W.32

NSA	95.7 sq m	1,030 sq ft
LIVING/KITCHEN	7.39 × 4.00m	24'3" × 13'1"
MASTER BEDROOM	3.41 × 4.13m	11'2" × 13'7"
BEDROOM 2	3.05 × 3.22m	10'0" × 10'7"
BEDROOM 3	2.60 × 4.00m	8'6" × 13'1"
BALCONY	1.94 × 3.83m	6'4" × 12'7"



FF: Fridge Freezer MEP: Mechanical, Electrical, Plumbing S: Storage WD: Washer Dryer

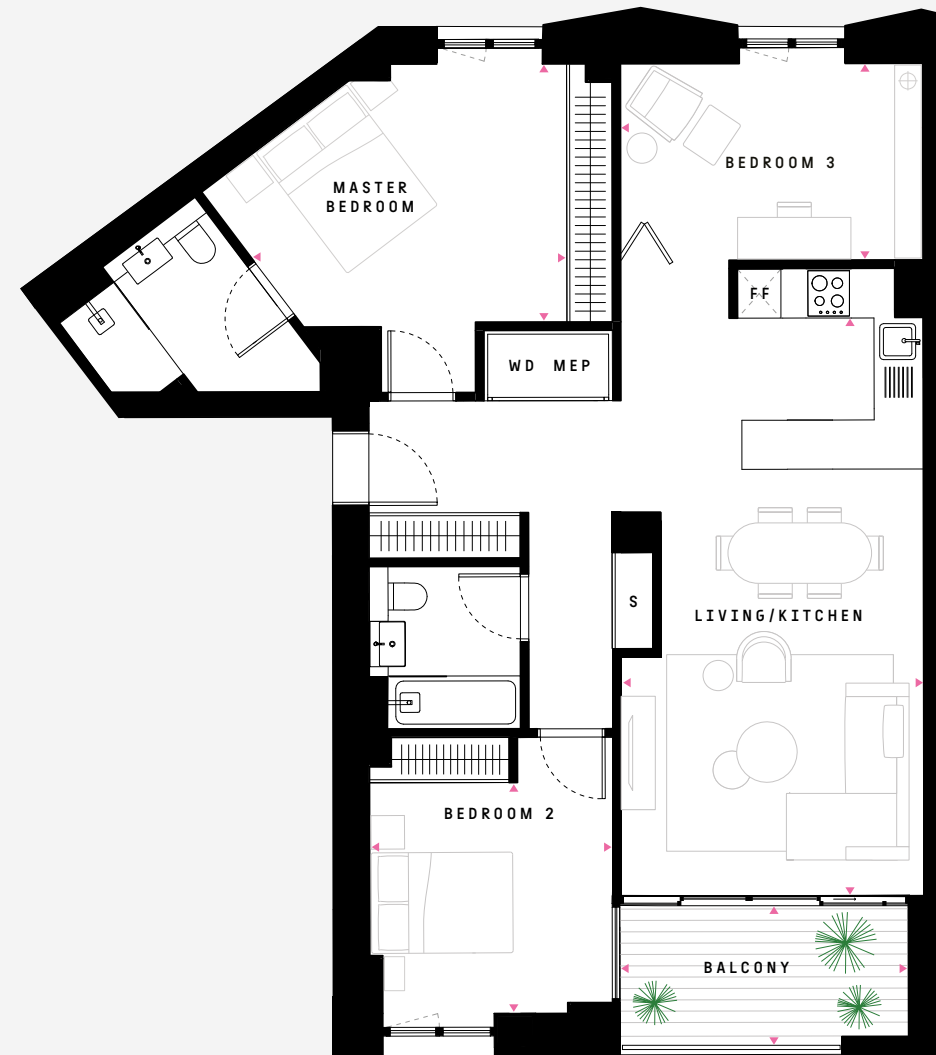
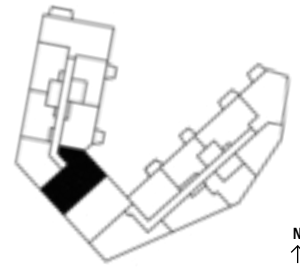


FF: Fridge Freezer MEP: Mechanical, Electrical, Plumbing S: Storage WD: Washer Dryer

TYPE 25B
3 BEDROOM: FLOOR 4

W.42

NSA	95.7 sq m	1,030 sq ft
LIVING/KITCHEN	7.39 × 4.00m	24'3" × 13'1"
MASTER BEDROOM	3.41 × 4.13m	11'2" × 13'7"
BEDROOM 2	3.05 × 3.22m	10'0" × 10'7"
BEDROOM 3	2.60 × 4.00m	8'6" × 13'1"
BALCONY	1.94 × 3.83m	6'4" × 12'7"

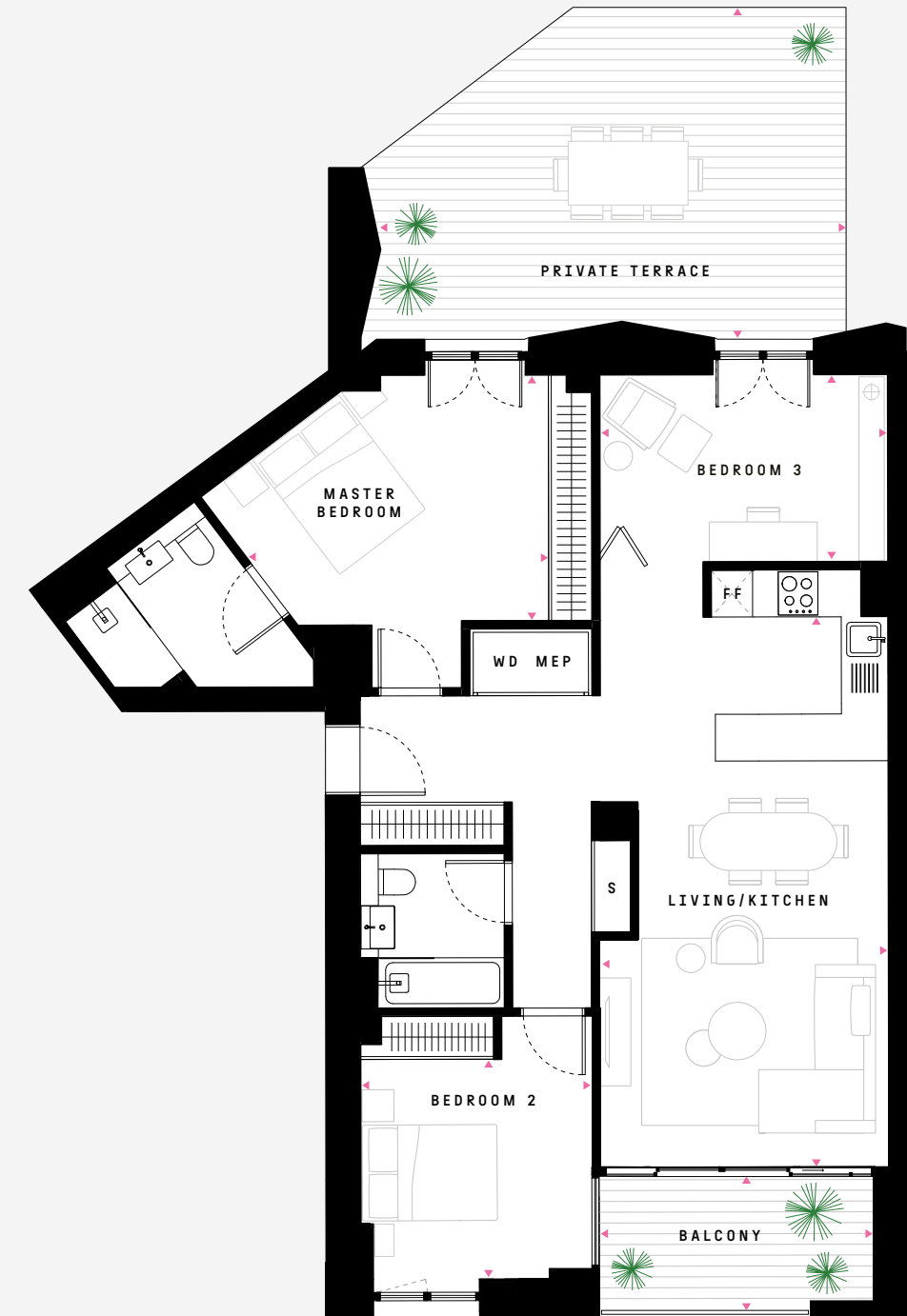
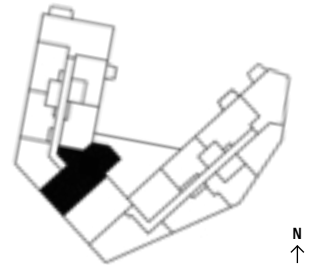


FF: Fridge Freezer MEP: Mechanical, Electrical, Plumbing S: Storage WD: Washer Dryer

TYPE 25BGT
3 BEDROOM: FLOOR 2

W.22

NSA	95.7 sq m	1,030 sq ft
LIVING/KITCHEN	7.39 × 4.00m	24'3" × 13'1"
MASTER BEDROOM	3.41 × 4.13m	11'2" × 13'7"
BEDROOM 2	3.05 × 3.22m	10'0" × 10'7"
BEDROOM 3	2.60 × 4.00m	8'6" × 13'1"
BALCONY	1.94 × 3.83m	6'4" × 12'7"
PRIVATE TERRACE	4.60 × 6.48m	15'1" × 21'3"



FF: Fridge Freezer MEP: Mechanical, Electrical, Plumbing S: Storage WD: Washer Dryer

TYPE 26
3 BEDROOM: FLOORS 1, 3, 5

W.13 W.36 W.55

NSA 102.7 sq m 1,105 sq ft

LIVING/KITCHEN	5.47 × 5.04m	17'11" × 16'6"
MASTER BEDROOM	3.35 × 5.07m	11'0" × 16'8"
BEDROOM 2	3.09 × 3.47m	10'2" × 11'5"
BEDROOM 3	2.22 × 3.47m	7'3" × 11'5"
BALCONY	5.16 × 1.80m	16'11" × 5'11"

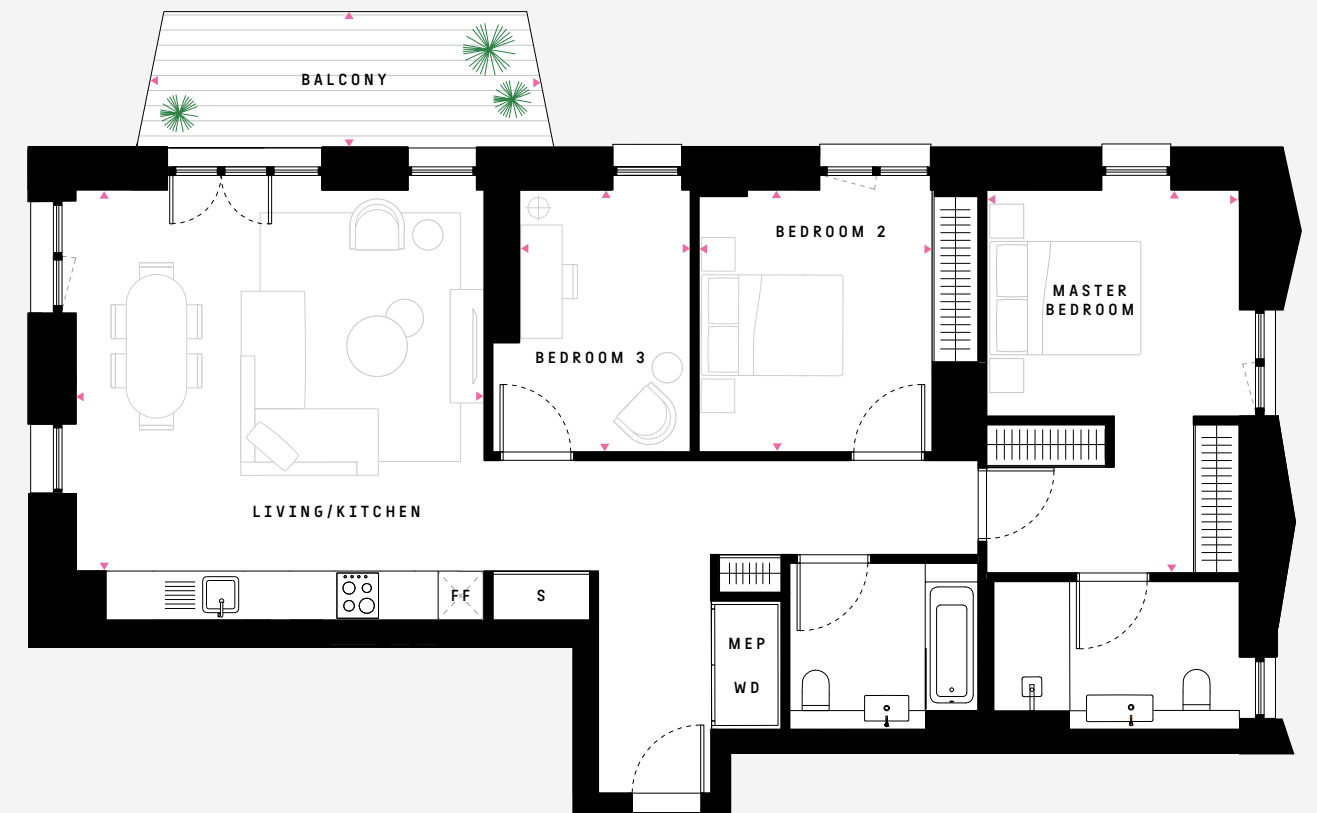
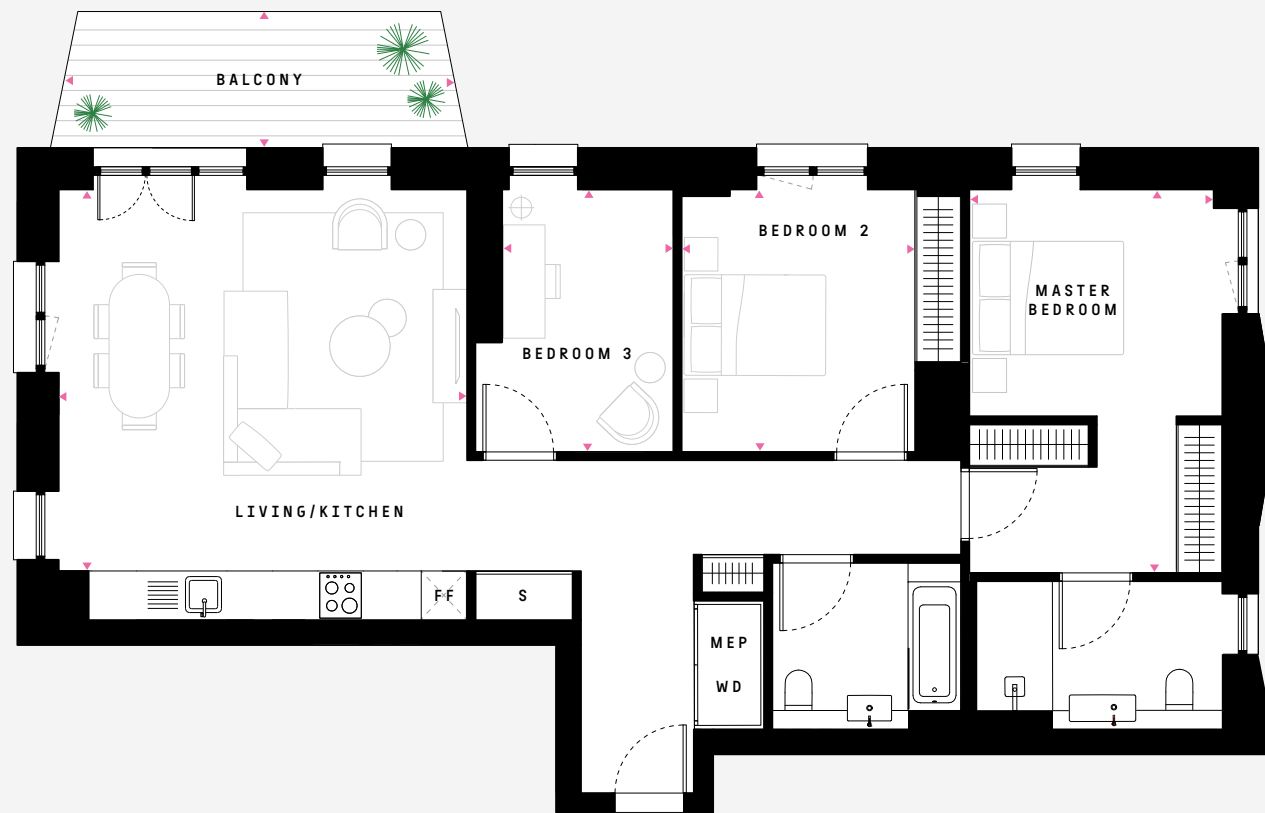
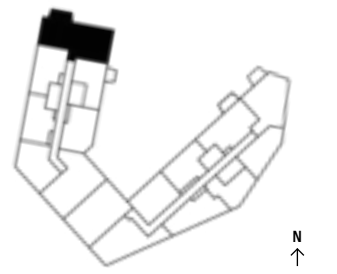


TYPE 26B
3 BEDROOM: FLOORS 2, 4

W.26 W.46

NSA 102.4 sq m 1,102 sq ft

LIVING/KITCHEN	5.47 × 5.04m	17'11" × 16'6"
MASTER BEDROOM	3.35 × 5.07m	11'0" × 16'8"
BEDROOM 2	3.09 × 3.47m	10'2" × 11'5"
BEDROOM 3	2.22 × 3.47m	7'3" × 11'5"
BALCONY	5.16 × 1.80m	16'11" × 5'11"



BUILDING SPECIFICATION

BUILDING

1 Ashley Road is the first building being brought to market as part of the Argent Related regeneration of Tottenham Hale. Designed by the Stirling Prize-winning Alison Brooks Architects, its distinctive carved form is a stepped massing of two taller elements (of 18 and 12 storeys respectively) connected by a five-storey central block at the south and, at first floor, by a garden podium.

The stepped massing features communal roof terraces at first and fifth floor which have been designed by RHS gold medal winner Andy Sturgeon Design.

The design draws on the local area's industrial heritage with a rich brick facade and a shimmering, faceted metal inner skin.

ENTRANCE LOBBIES AND RESIDENTS' LOUNGE

The building has a striking triple-height entrance lobby. This is the location of the concierge desk, manned 24 hours a day to provide both convenience and peace of mind.

A comfortable residents' lounge with furnishings opens onto the larger residents' terrace.

LIFT LOBBIES AND COMMUNAL HALLWAYS

Lobbies feature painted walls and carpet floor finish with contrasting colour to lift area.

LIFTS

Two passenger lifts from ground-floor level serve each core (East, West) and all residential floors.

PEACE OF MIND

- Uniformed 24-hour concierge service
- Fob access control to building entrance, car park and lifts
- Video entry control to building entrance
- Mains supply smoke and heat detectors
- CCTV surveillance to public areas
- Parcel store for oversized deliveries
- All apartments benefit from a 10-year new homes warranty
- Lease length 999 years (less 7 days)

ESTATE MANAGEMENT AND BUILDING MANAGEMENT SERVICES

Selected external cleaning will be carried out regularly to ensure the building is kept to the appropriate standard.

A building service charge will be payable by apartment owners to cover costs of building services (to be provided by a management company), 24-hour concierge, building maintenance, cleaning and insurance.

A contribution towards the costs of the wider Tottenham Hale estate management will also be payable for services such as estate security, cleaning and maintenance, amenities and landscaping and administered via an estate service charge.

APARTMENT SPECIFICATION

KITCHENS

Wall-hung cupboards feature glass within a matt lacquer frame on soft-close hinges. Base units consist of matt lacquer handleless doors on soft-close hinges and fully integrated waste receptacle.

Solid surface worktops and splashback with an integrated stainless steel sink.

A full-height cabinet houses a fully integrated fridge freezer.

Where featured, selected corner kitchens include open shelving for display.

Brushed stainless steel finish brassware.

Appliances include:

- Four-zone induction hob
- Oven
- Dishwasher (slimline in studio and one-bedroom apartments)
- Integrated fridge freezer
- Free-standing washer dryer situated in the entrance-hall cupboard
- All appliances Neff or similar

BATHROOMS

Storage cabinet with linear lighting and solid surface vanity unit with integrated basin.

Large format porcelain tiles to floor and walls.

Heated stainless steel towel rail.

White wall-mounted WC with dual push flush button.

Brushed stainless steel finish brassware.

Family bathrooms include a bath with glazed shower screen and wall-mounted brushed stainless steel shower head.

En-suite bathrooms to master bedrooms include a walk-in shower with wall-mounted brushed stainless steel shower head and glazed screen.

WARDROBES AND JOINERY

Master and second bedrooms include wardrobes with white lacquered soft-close doors, inset handles, hanging rail and a high-level shelf.

Master bedroom wardrobes have concealed feature lighting.

All fitted cupboards have full-height doors with white lacquer finish.

FLOORING

Engineered timber floor finish to all rooms except bedrooms and bathrooms.

Bedrooms have fitted carpet; bathrooms have porcelain tile.

HOME AUTOMATION AND LIGHTING

Video intercom located in a central location within each apartment linked to the main building entrance.

Dimmable lighting controls to living rooms and bedrooms.

DOORS

Timber entrance door and frame, complete with door furniture.

ELECTRICAL

All visible plates, sockets, TV and data outlets in white to suit wall and surface finishes.

Thermostatically controlled under-floor heating to all rooms.

CEILING HEIGHTS

All apartments have a ceiling height of 2.55m*. Top-floor apartments benefit from extra height at 2.9m*.

*Excluding bulkheads and bathrooms.

BALCONIES AND TERRACES

All balconies are accessed via a glazed door. Where applicable, private apartment terraces feature a timber floor finish and are accessed via a glazed door.

Disclaimer

While reasonable effort has been made to ensure the accuracy of this document and the information contained within, this cannot be guaranteed and no representation or warranty is made in that regard and all such representations and warranties (whether express, implied or otherwise) are excluded to the extent permitted by law.

The specification included herein is the anticipated specification as at the date of this brochure and is designed specifically as a guide and we reserve the right to amend the specification where necessary or desirable and without notice. Computer generated images are indicative of the quality and style of the development and are not intended to represent fully accurate depictions. Apartment and amenity designs, sizes, layouts and other details are indicative only and may be subject to change. Any areas, measurements or distances shown in any text or plan are indicative and for information purposes only and may be different once actually constructed.

Any reference to use of the property does not mean that any necessary planning, building regulations or other consent has been obtained.

Variances occur between apartment types. Please refer to the sales team for details of a particular apartment.

A management company will be appointed to provide building management services.

Please note that the design development of 1 Ashley Road is ongoing and certain items of the specification may be amended to an item of equivalent quality without notice.

Plans are not to scale. All measurements are approximate. All furniture and planting shown for context only, not supplied with the apartment.

The Argent Related sales team is employed by Argent (Property Development) Services LLP, an associated company of TH Propco ARE Limited, which holds a beneficial interest in 1 Ashley Road, June 2019.

Design by dn&co.
dnco.com



www.tottenhamhale.london
hello@tottenhamhale.london
+44 (0)20 7205 4047

TOTTENHAM HALE

WWW.TOTTENHAMHALE.LONDON