

10

PARK DRIVE
CANARY WHARF

FLOORPLATES

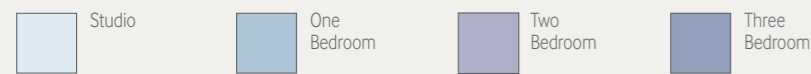
LEVELS 1-11

COMPTON GARDENS AND EXISTING ESTATE

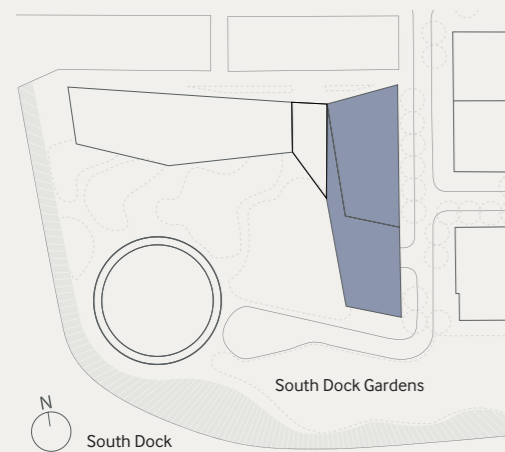


NOT TO SCALE

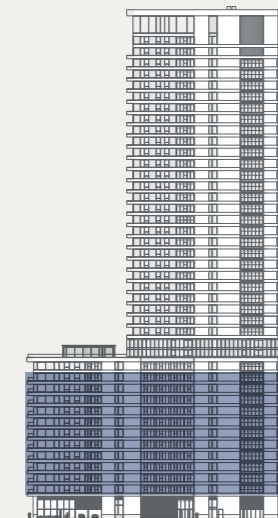
KEY



SITE PLAN



EAST ELEVATION



STUDIO APARTMENTS

Apartment 1.02-11.02	sq. ft	sq. m
Apartment Area	398	37.00
Living/Bedroom	23'11 x 12'0	7.30 x 3.66
Juliette Balcony	-	-

Apartment 1.03-11.03 (exec)	sq. ft	sq. m
Apartment Area	672	62.47
Living/Bedroom	29'5 x 18'3	8.97 x 5.56

Apartment 1.04-11.04	sq. ft	sq. m
Apartment Area	413	38.37
Living/Bedroom	22'12 x 13'5	7.0 x 4.10
Balcony	56	5.2

Apartment 1.14-11.14	sq. ft	sq. m
Apartment Area	445	41.38
Living/Bedroom	27'9 x 13'0	8.46 x 3.97
Juliette Balcony	-	-

ONE BEDROOM APARTMENTS

Apartment 1.01-11.01	sq. ft	sq. m
Apartment Area	622	57.75
Living/Kitchen	27'6 x 12'9	8.37 x 3.88
Master Bedroom	19'7 x 9'5	5.96 x 2.87
Juliette Balcony	-	-

Apartment 1.05-11.05	sq. ft	sq. m
Apartment Area	653	60.65
Living/Kitchen	28'10 x 13'0	8.79 x 3.97
Master Bedroom	21'6 x 9'2	6.54 x 2.80
Balcony	114	10.6

Apartment 1.06-11.06	sq. ft	sq. m
Apartment Area	672	62.45
Living/Kitchen	28'10 x 11'5	8.79 x 3.49
Master Bedroom	21'3 x 9'11	6.47 x 3.02
Balcony	51	4.7

Apartment 1.09-11.09	sq. ft	sq. m
Apartment Area	440	40.85
Living/Kitchen	21'6 x 12'2	6.55 x 3.71
Master Bedroom	11'12 x 9'2	3.65 x 2.80
Juliette Balcony	-	-

Apartment 1.13-11.13	sq. ft	sq. m
Apartment Area	638	59.25
Living/Kitchen	35'5 x 11'8	10.81 x 3.55
Master Bedroom	11'10 x 9'0	3.61 x 2.75
Balcony	90	8.3

TWO BEDROOM APARTMENTS

Apartment 1.07-11.07	sq. ft	sq. m
Apartment Area	901	83.75
Living/Kitchen	26'6 x 15'1	8.07 x 4.60
Master Bedroom	14'9 x 10'3	4.50 x 3.12
Second Bedroom	14'9 x 9'7	4.50 x 2.93
Juliette Balcony	-	-

Apartment 1.08*-11.08	sq. ft	sq. m
Apartment Area	871	80.96
Living/Kitchen	24'7 x 14'0	7.50 x 4.27
Master Bedroom	13'8 x 9'2	4.17 x 2.80
Second Bedroom	11'4 x 9'1	3.46 x 2.78
Balcony	116	10.7

*Juliette Balcony

Apartment 1.10-11.10	sq. ft	sq. m
Apartment Area	1176	109.24
Living/Kitchen	29'10 x 19'11	9.09 x 6.07
Master Bedroom	14'1 x 10'0	4.29 x 3.20
Second Bedroom	13'9 x 9'6	4.19 x 2.90
Balcony	172	16.0

Apartment 1.12-11.12	sq. ft	sq. m
Apartment Area	880	81.77
Living/Kitchen	31'0 x 11'0	9.46 x 3.36
Master Bedroom	20'8 x 9'1	6.29 x 2.78
Second Bedroom	14'0 x 8'10	4.28 x 2.70
Balcony	151	14.0

THREE BEDROOM APARTMENTS

Apartment 1.11-11.11	sq. ft	sq. m
Apartment Area	1246	115.78
Living/Kitchen	22'8 x 20'7	6.90 x 6.27
Master Bedroom	19'5 x 9'6	5.92 x 2.90
Second Bedroom	12'1 x 9'11	3.69 x 3.03
Third Bedroom	12'4 x 8'9	3.75 x 2.68
Balconies	226	21.0

Floorplan measurements are approximate
Exact layout sizes may vary in accordance with the contract
Please speak to a Sales Consultant to receive an individual plan of your preferred apartment

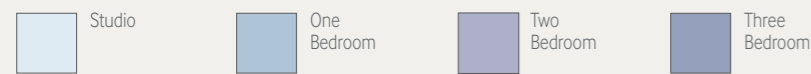
LEVEL 12

COMPTON GARDENS AND EXISTING ESTATE

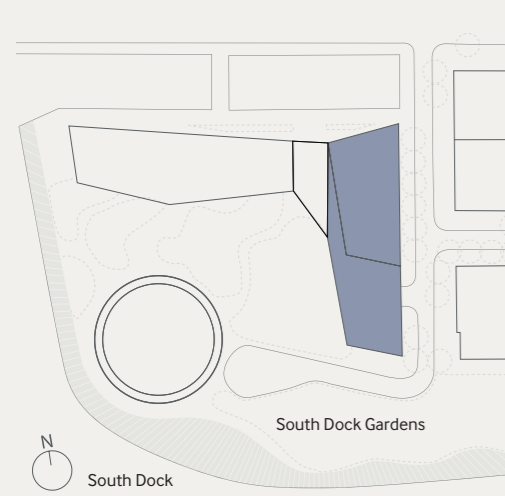


NOT TO SCALE

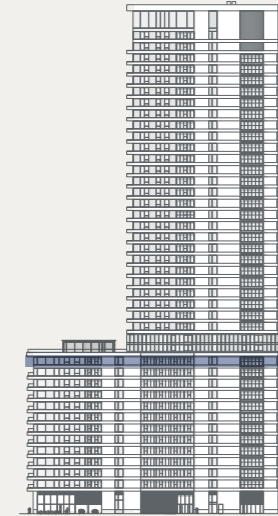
KEY



SITE PLAN



EAST ELEVATION



STUDIO APARTMENTS

Apartment 12.02	sq. ft	sq. m
Apartment Area	398	37.00
Living/Bedroom	23'11 x 12'0	7.30 x 3.66
Juliette Balcony	—	—

Apartment 12.03 (exec)	sq. ft	sq. m
Apartment Area	672	62.47
Living/Bedroom	29'5 x 18'3	8.97 x 5.56

Apartment 12.04	sq. ft	sq. m
Apartment Area	413	38.37
Living/Bedroom	22'12 x 13'5	7.0 x 4.10
Balcony	56	5.2

Apartment 12.13	sq. ft	sq. m
Apartment Area	445	41.38
Living/Bedroom	27'9 x 13'0	8.46 x 3.97
Juliette Balcony	—	—

ONE BEDROOM APARTMENTS

Apartment 12.01	sq. ft	sq. m
Apartment Area	622	57.75
Living/Kitchen	27'6 x 12'9	8.37 x 3.88
Master Bedroom	19'7 x 9'5	5.96 x 2.87
Juliette Balcony	—	—

Apartment 12.05	sq. ft	sq. m
Apartment Area	653	60.65
Living/Kitchen	28'10 x 13'0	8.79 x 3.97
Master Bedroom	21'6 x 9'2	6.54 x 2.80
Balcony	114	10.6

Apartment 12.06	sq. ft	sq. m
Apartment Area	672	62.45
Living/Kitchen	28'10 x 11'5	8.79 x 3.49
Master Bedroom	21'3 x 9'11	6.47 x 3.02
Balcony	51	4.7

Apartment 12.12	sq. ft	sq. m
Apartment Area	638	59.25
Living/Kitchen	35'5 x 11'8	10.81 x 3.55
Master Bedroom	11'10 x 9'0	3.61 x 2.75
Balcony	90	8.3

TWO BEDROOM APARTMENTS

Apartment 12.07	sq. ft	sq. m
Apartment Area	901	83.75
Living/Kitchen	26'6 x 15'1	8.07 x 4.60
Master Bedroom	14'9 x 10'3	4.50 x 3.12
Second Bedroom	14'9 x 9'7	4.50 x 2.93
Juliette Balcony	—	—

Apartment 12.08	sq. ft	sq. m
Apartment Area	871	80.96
Living/Kitchen	24'7 x 14'0	7.50 x 4.27
Master Bedroom	13'8 x 9'2	4.17 x 2.80
Second Bedroom	11'4 x 9'1	3.46 x 2.78
Balcony	116	10.7

Apartment 12.11	sq. ft	sq. m
Apartment Area	880	81.77
Living/Kitchen	31'0 x 11'0	9.46 x 3.36
Master Bedroom	20'8 x 9'1	6.29 x 2.78
Second Bedroom	14'0 x 8'10	4.28 x 2.70
Balcony	151	14.0

THREE BEDROOM APARTMENTS

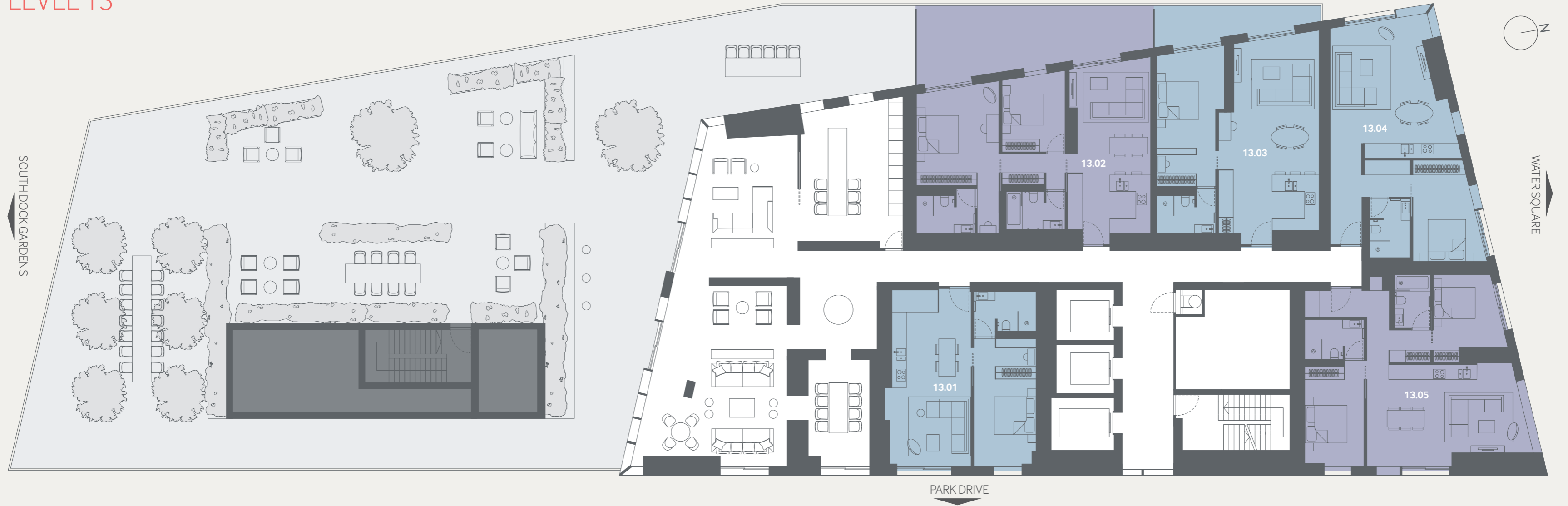
Apartment 12.09	sq. ft	sq. m
Apartment Area	1442	133.96
Living/Kitchen	29'10 x 19'11	9.09 x 6.07
Master Bedroom	14'1 x 10'0	4.29 x 3.20
Second Bedroom	15'1 x 10'0	4.60 x 3.17
Third Bedroom	11'10 x 9'6	3.65 x 2.9
Juliette Balcony	—	—

Apartment 12.10	sq. ft	sq. m
Apartment Area	1246	115.78
Living/Kitchen	22'8 x 20'7	6.90 x 6.27
Master Bedroom	19'5 x 9'6	5.92 x 2.90
Second Bedroom	12'1 x 9'11	3.69 x 3.03
Third Bedroom	12'4 x 8'9	3.75 x 2.68
Balcony	103	9.6

Floorplan measurements are approximate
 Exact layout sizes may vary in accordance with the contract
 Please speak to a Sales Consultant to receive an individual
 plan of your preferred apartment

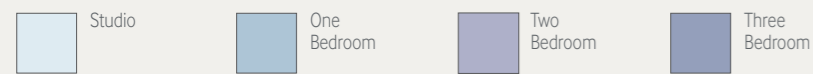
LEVEL 13

COMPTON GARDENS AND EXISTING ESTATE

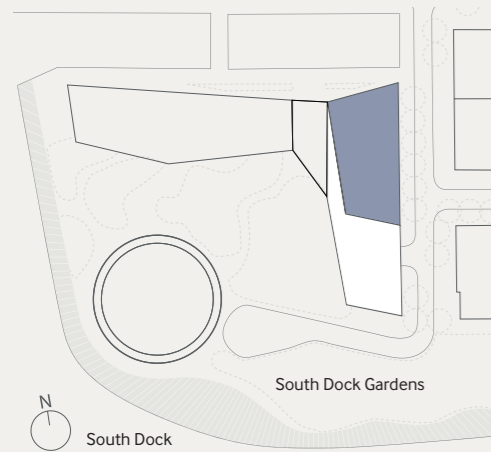


NOT TO SCALE

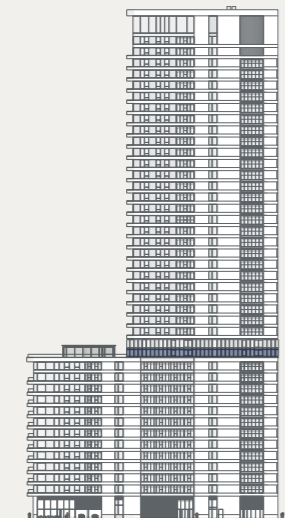
KEY



SITE PLAN



EAST ELEVATION



ONE BEDROOM APARTMENTS

Apartment 13.01	sq. ft	sq. m
Apartment Area	633	58.78
Living/Kitchen	27'10" x 13'1"	8.49 x 3.99
Master Bedroom	20'1" x 9'3"	6.11 x 2.83
Juliette Balcony	—	—

Apartment 13.03	sq. ft	sq. m
Apartment Area	746	69.35
Living/Kitchen	31'0" x 15'9"	9.60 x 4.80
Master Bedroom	20'0" x 10'7"	6.28 x 3.22
Terrace	122	11.3

Apartment 13.04	sq. ft	sq. m
Apartment Area	724	67.23
Living/Kitchen	21'2" x 19'2"	6.46 x 5.85
Master Bedroom	14'0" x 10'6"	4.28 x 3.21
Juliette Balcony	—	—

TWO BEDROOM APARTMENTS

Apartment 13.02	sq. ft	sq. m
Apartment Area	897	83.37
Living/Kitchen	26'0" x 11'5"	8.20 x 3.48
Master Bedroom	15'11" x 12'11"	4.85 x 3.93
Second Bedroom	12'0" x 9'9"	3.75 x 2.98
Terrace	365	33.9

Apartment 13.05	sq. ft	sq. m
Apartment Area	936	86.96
Living/Kitchen	25'2" x 16'0"	7.66 x 4.88
Master Bedroom	15'8" x 9'2"	4.77 x 2.80
Second Bedroom	11'3" x 10'0"	3.44 x 3.23
Juliette Balcony	—	—

Floorplan measurements are approximate
 Exact layout sizes may vary in accordance with the contract
 Please speak to a Sales Consultant to receive an individual
 plan of your preferred apartment

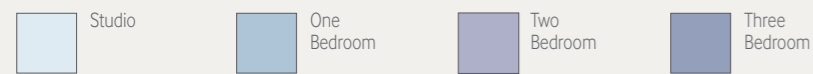
LEVEL 14

COMPTON GARDENS AND EXISTING ESTATE

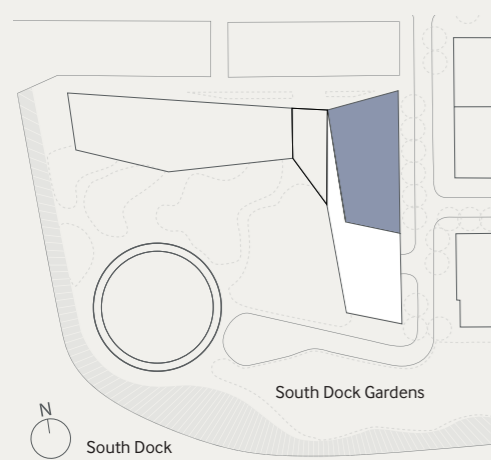


NOT TO SCALE

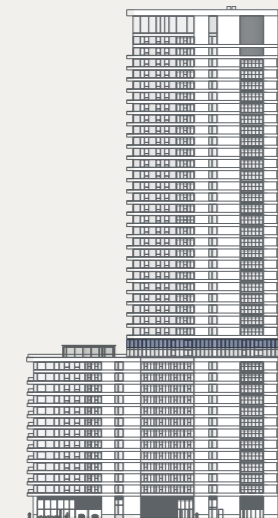
KEY



SITE PLAN



EAST ELEVATION



STUDIO APARTMENTS

Apartment 14.01	sq. ft	sq. m
Apartment Area	502	46.68
Living/Bedroom	27'7 x 18'0	8.40 x 5.49
Juliette Balcony	—	—

ONE BEDROOM APARTMENTS

Apartment 14.04	sq. ft	sq. m
Apartment Area	568	52.80
Living/Kitchen	26'4 x 13'2	8.02 x 4.01
Master Bedroom	17'5 x 9'0	5.31 x 2.75
Juliette Balcony	—	—

Apartment 14.05	sq. ft	sq. m
Apartment Area	746	69.35
Living/Kitchen	31'0 x 15'9	9.60 x 4.80
Master Bedroom	20'0 x 10'7	6.28 x 3.22
Juliette Balcony	—	—

Apartment 14.06	sq. ft	sq. m
Apartment Area	724	67.23
Living/Kitchen	21'2 x 19'2	6.46 x 5.85
Master Bedroom	14'0 x 10'6	4.28 x 3.21
Juliette Balcony	—	—

TWO BEDROOM APARTMENTS

Apartment 14.02	sq. ft	sq. m
Apartment Area	1118	103.87
Living/Kitchen	35'9 x 13'8	10.98 x 4.16
Master Bedroom	17'1 x 12'0	5.20 x 3.67
Second Bedroom	13'1 x 12'5	4.00 x 3.79
Juliette Balcony	—	—

Apartment 14.03	sq. ft	sq. m
Apartment Area	1159	107.71
Living/Kitchen	24'8 x 22'0	7.52 x 6.89
Master Bedroom	14'6 x 12'0	4.41 x 3.67
Second Bedroom	11'8 x 9'1	3.55 x 2.76
Juliette Balcony	—	—

Apartment 14.07	sq. ft	sq. m
Apartment Area	936	86.96
Living/Kitchen	25'2 x 16'0	7.66 x 4.88
Master Bedroom	15'8 x 9'2	4.77 x 2.80
Second Bedroom	11'3 x 10'0	3.44 x 3.23
Juliette Balcony	—	—

Floorplan measurements are approximate
 Exact layout sizes may vary in accordance with the contract
 Please speak to a Sales Consultant to receive an individual
 plan of your preferred apartment

LEVELS 15–27

STUDIO APARTMENTS

Apartment 15.01–27.01	sq. ft.	sq. m.
Apartment Area	499	46.40
Living/Bedroom	27'7 x 18'0	8.40 x 5.49
Juliette Balcony	–	–

ONE BEDROOM APARTMENTS

Apartment 15.04–27.04	sq. ft.	sq. m.
Apartment Area	461	42.82
Living/Kitchen	22'2 x 12'0	6.76 x 3.90
Master Bedroom	12'0 x 9'2	3.87 x 2.80
Balcony	108	10.0

Apartment 15.05–27.05	sq. ft.	sq. m.
Apartment Area	636	59.09
Living/Kitchen	25'10 x 14'4	7.87 x 4.37
Master Bedroom	16'12 x 9'3	5.17 x 2.82
Balconies	117	10.9

Apartment 15.06–27.06	sq. ft.	sq. m.
Apartment Area	656	60.93
Living/Kitchen	17'8 x 16'4	5.39 x 4.97
Master Bedroom	15'8 x 10'9	4.77 x 3.27
Balcony	75	6.9

TWO BEDROOM APARTMENTS

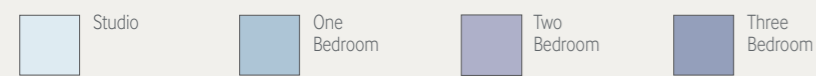
Apartment 15.02–27.02	sq. ft.	sq. m.
Apartment Area	960	89.22
Living/Kitchen	29'10 x 13'8	9.10 x 4.16
Master Bedroom	14'1 x 9'5	4.29 x 2.88
Second Bedroom	13'3 x 12'6	4.03 x 3.80
Balcony	147	13.6

Apartment 15.03–27.03	sq. ft.	sq. m.
Apartment Area	922	85.68
Living/Kitchen	23'0 x 18'6	7.04 x 5.65
Master Bedroom	12'3 x 9'9	3.74 x 2.97
Second Bedroom	9'9 x 9'2	2.97 x 2.80
Balcony	178	16.6

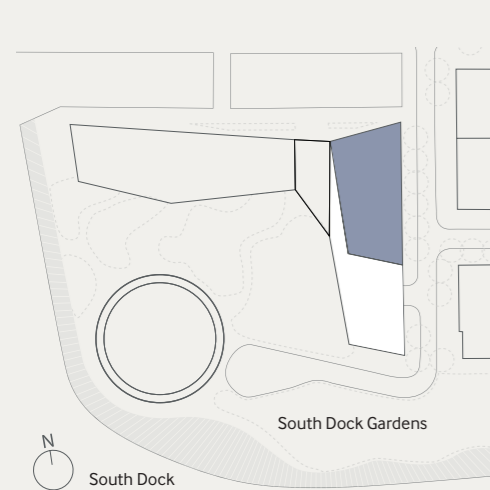
Apartment 15.07*–27.07	sq. ft.	sq. m.
Apartment Area	899	83.56
Living/Kitchen	25'2 x 16'0	7.66 x 4.88
Master Bedroom	15'8 x 9'2	4.77 x 2.80
Second Bedroom	11'3 x 10'0	3.44 x 3.23
Balcony	116	10.7

*Juliette Balcony

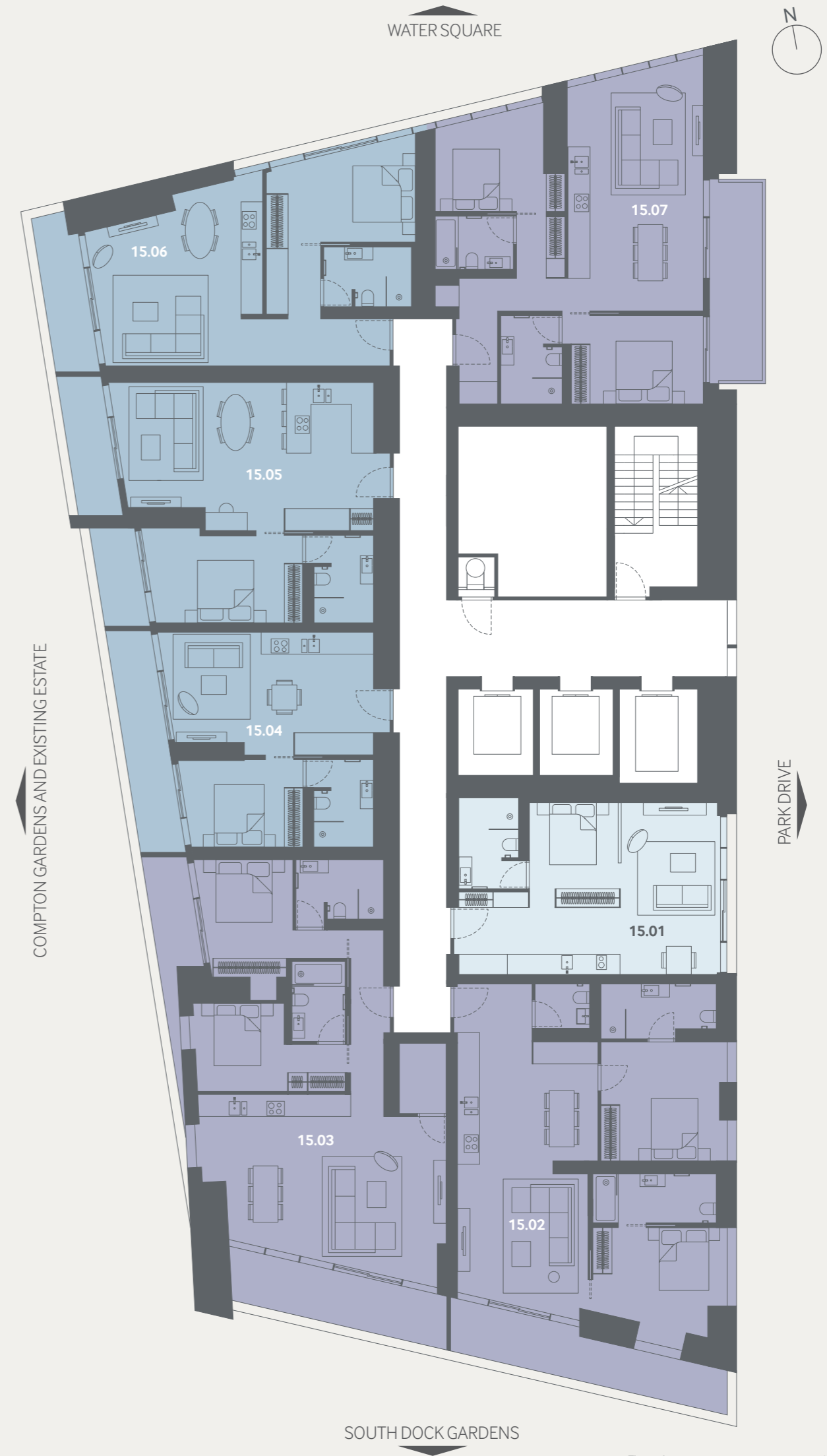
KEY



SITE PLAN



EAST ELEVATION



NOT TO SCALE

Floorplan measurements are approximate
Exact layout sizes may vary in accordance with the contract
Please speak to a Sales Consultant to receive an individual
plan of your preferred apartment

LEVELS 28–39

STUDIO APARTMENTS

Apartment 28.01–39.01	sq. ft.	sq. m.
Apartment Area	499	46.40
Living/Bedroom	27'7 x 18'0	8.40 x 5.49
Juliette Balcony	–	–

ONE BEDROOM APARTMENTS

Apartment 28.05–39.05	sq. ft.	sq. m.
Apartment Area	656	60.93
Living/Kitchen	17'8 x 16'4	5.39 x 4.97
Master Bedroom	15'8 x 10'9	4.77 x 3.27
Balcony	75	6.9

TWO BEDROOM APARTMENTS

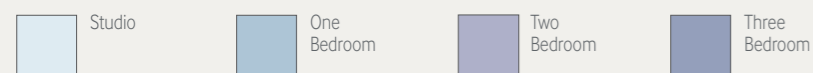
Apartment 28.02–39.02	sq. ft.	sq. m.
Apartment Area	960	89.22
Living/Kitchen	29'10 x 13'8	9.10 x 4.16
Master Bedroom	14'1 x 9'5	4.29 x 2.88
Second Bedroom	13'3 x 12'6	4.03 x 3.80
Balcony	147	13.6

Apartment 28.03–39.03	sq. ft.	sq. m.
Apartment Area	922	85.68
Living/Kitchen	23'0 x 18'6	7.04 x 5.65
Master Bedroom	12'3 x 9'9	3.74 x 2.97
Second Bedroom	9'9 x 9'2	2.97 x 2.80
Balcony	178	16.6

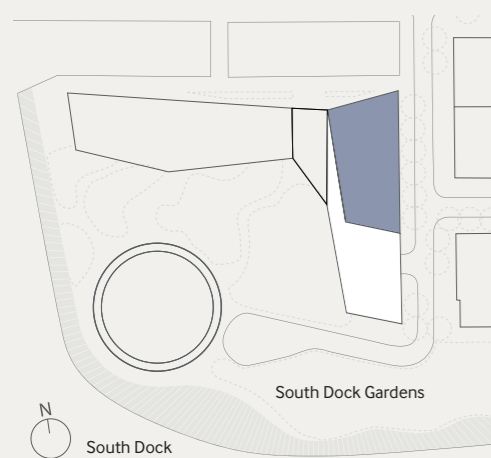
Apartment 28.04–39.04	sq. ft.	sq. m.
Apartment Area	1114	103.49
Living/Kitchen	24'3 x 22'5	7.40 x 6.83
Master Bedroom	19'5 x 13'1	5.91 x 3.99
Second Bedroom	13'5 x 10'4	4.10 x 3.15
Balconies	226	21.0

Apartment 28.06–39.06	sq. ft.	sq. m.
Apartment Area	899	83.56
Living/Kitchen	25'2 x 16'0	7.66 x 4.88
Master Bedroom	15'8 x 9'2	4.77 x 2.80
Second Bedroom	11'3 x 10'0	3.44 x 3.23
Balcony	116	10.7

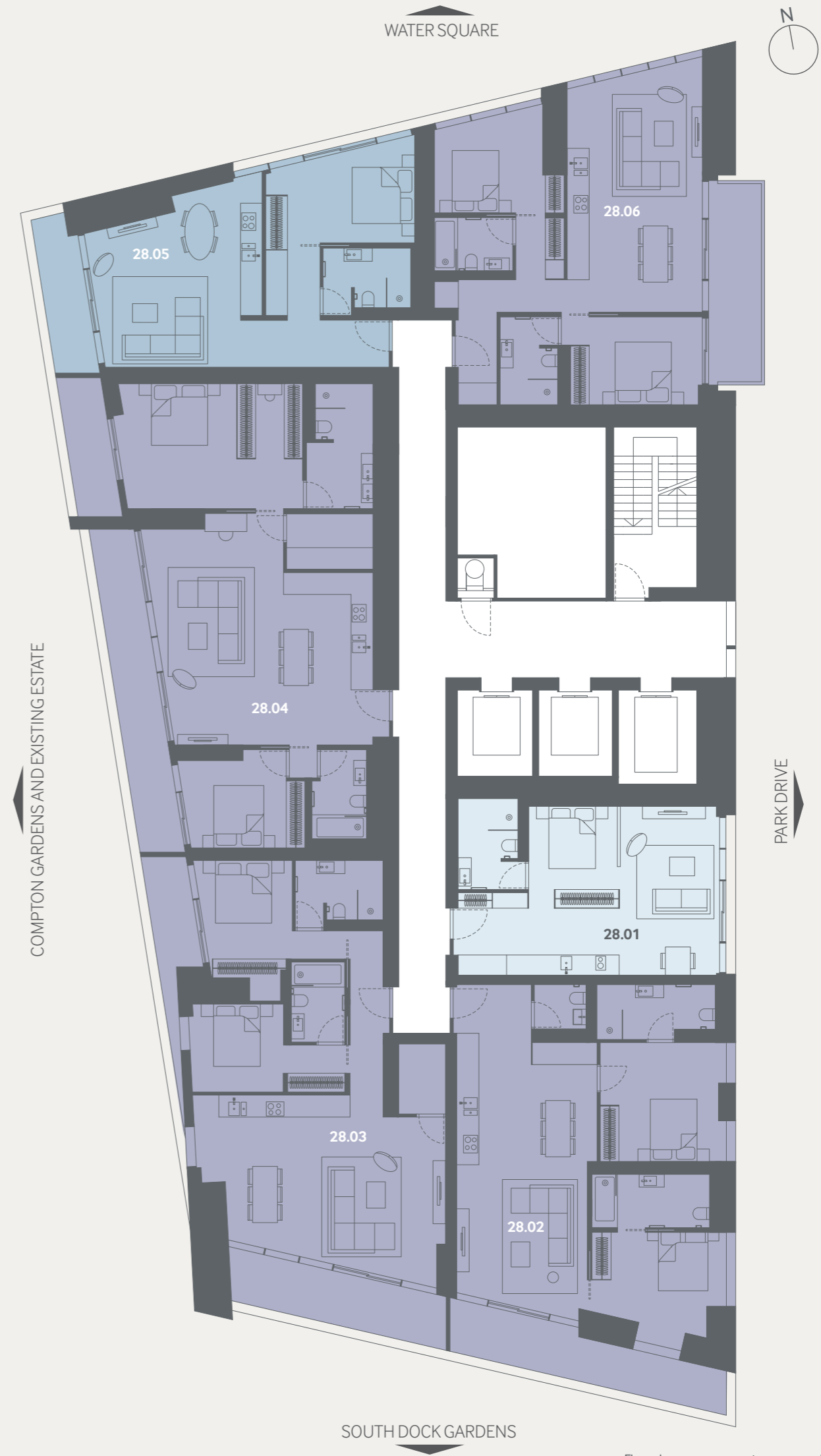
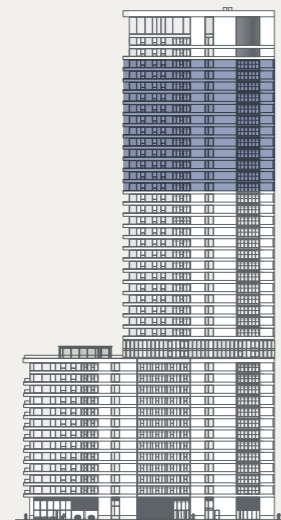
KEY



SITE PLAN



EAST ELEVATION



NOT TO SCALE

Floorplan measurements are approximate
Exact layout sizes may vary in accordance with the contract
Please speak to a Sales Consultant to receive an individual
plan of your preferred apartment

CONTACTS



Visit our Sales and Marketing Suite
in Jubilee Place mall, Canary Wharf

+44 (0)20 7001 3800

residential.sales@canarywharf.com

www.canarywharf.com/residential



Important Notice. MISREPRESENTATION ACT 1967 & DECLARATION 10 Park Drive Limited its subsidiaries and agents give notice that; i) these particulars are a general outline only, for the guidance of prospective purchasers, and do not constitute the whole or any part of an offer or contract; ii) the accuracy of any description, dimensions, references to condition, necessary permissions for use and occupation and other details contained herein is not guaranteed and are not to be relied upon as statements of fact or representations, purchasers must satisfy themselves as to their accuracy; iii) no liability is accepted in negligence or otherwise, for any loss arising from the use of these particulars and; iv) the reference to any plant, machinery equipment, services, fixtures or fittings at the property shall not constitute a representation (unless otherwise stated) as to its state or condition or that it is capable of fulfilling its intended function. Prospective purchasers should satisfy themselves as to the fitness of such items for their requirements. Fixtures and fittings may be replaced with items of a comparable quality. v) Pictorial images, drawings and computer generated images are indicative and for illustrative purposes only. vi) no employee of 10 Park Drive Limited or any of its associated companies or partnerships (and their Joint Agents where applicable) has any authority to make or give any representation or warranty or enter into any contract whatever in relation to the property; July 2015 Subject to Contract.