



FLOOR PLANS



CHARTWELL
House



THE UNIVERSAL ASPIRATION TO LIVE BESIDE WATER HAS INSPIRED AND SHAPED MANY OF THE WORLD'S GREATEST CITIES AND THEIR CULTURE.



FLOOR PLANS

CHARTWELL
House

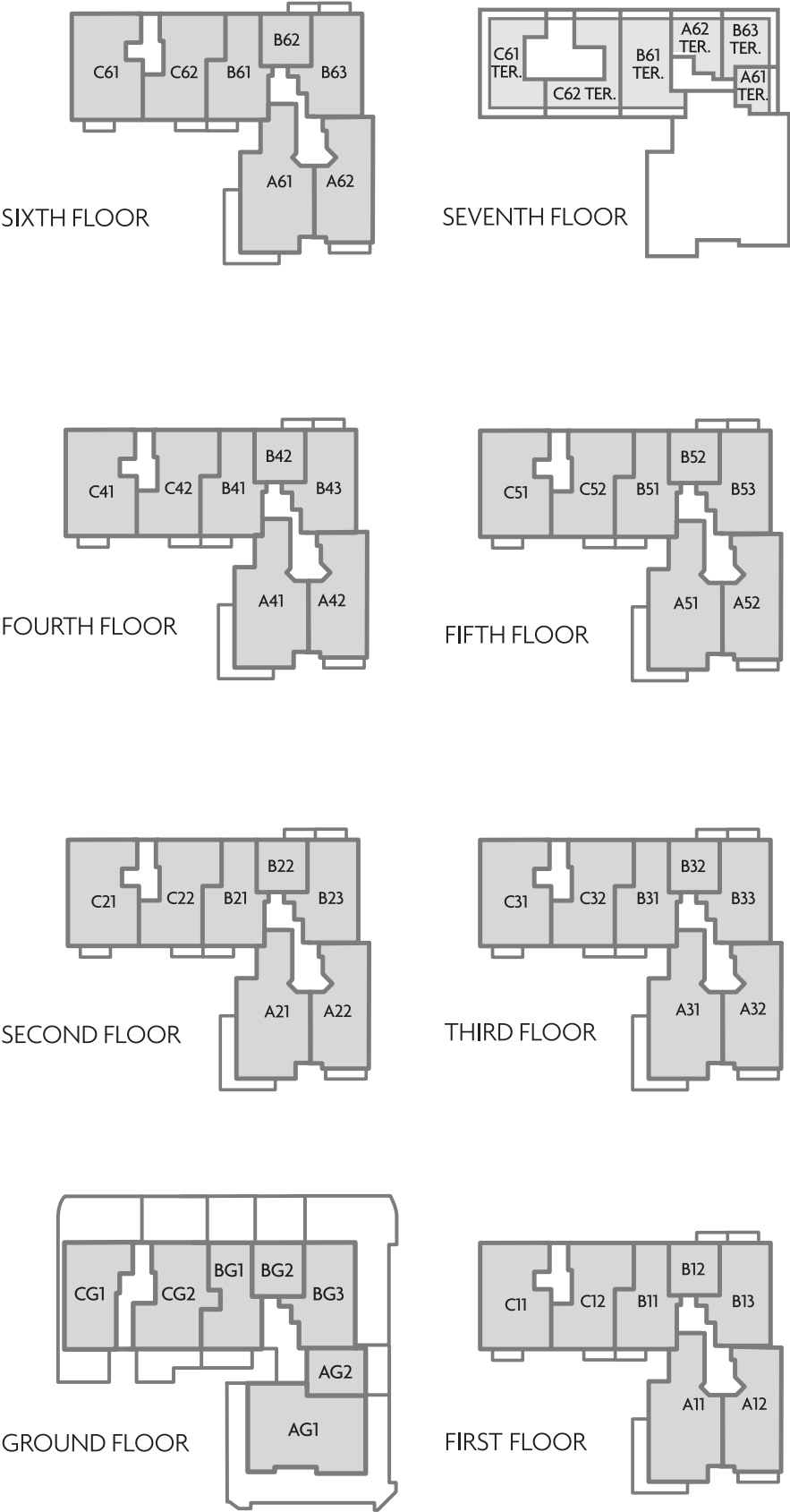


- KEY TO BUILDINGS
- 1 CLAYDON HOUSE
 - 2 CHARTWELL HOUSE
 - 3 COMPTON HOUSE
 - 4 TOWER EAST
 - 5 TOWER WEST
 - 6 METROPOLITAN BUILDING
 - 7 THE ROTUNDA

CHARTWELL HOUSE

SCHEDULE OF ACCOMMODATION

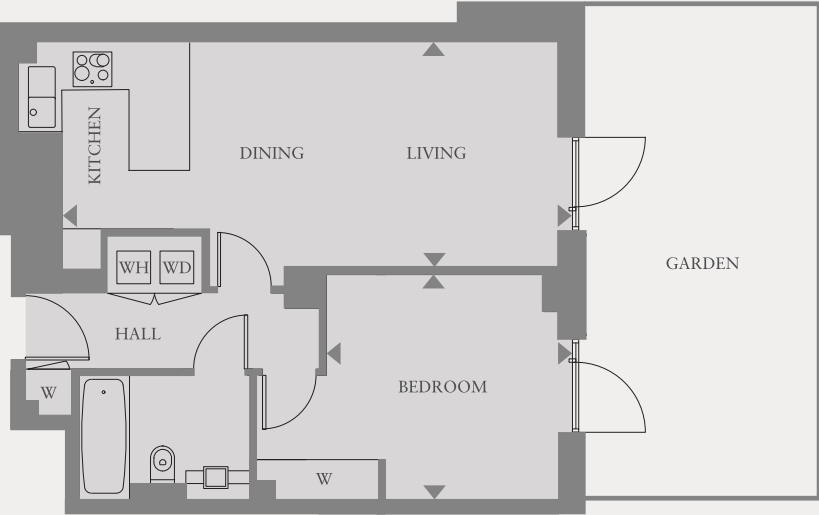
APT NO.	LEVEL	BEDROOMS	BALCONY/TERRACE GARDEN	INTERNAL APARTMENT AREA		PAGE NO.
				SQ FT	SQ M	
AG1	GROUND	4	GARDEN	2126	197.5	23
AG2	GROUND	1	GARDEN	566	52.6	4
BG1	GROUND	2	GARDEN	1154	107.2	7
BG2	GROUND	1	GARDEN	560	52.0	5
BG3	GROUND	3	GARDEN	1279	118.8	14
CG1	GROUND	3	GARDEN	1343	124.8	17
CG2	GROUND	3	GARDEN	1498	139.2	18
A11	FIRST	3	BALCONY	1716	159.4	10
A12	FIRST	3	BALCONY	1767	164.2	11
B11	FIRST	2	BALCONY	1180	109.6	8
B12	FIRST	1	BALCONY	561	52.1	6
B13	FIRST	3	BALCONY	1272	118.2	15
C11	FIRST	3	BALCONY	1569	145.8	19
C12	FIRST	3	BALCONY	1451	134.8	20
A21	SECOND	3	BALCONY	1716	159.4	10
A22	SECOND	3	BALCONY	1767	164.2	11
B21	SECOND	2	BALCONY	1180	109.6	8
B22	SECOND	1	BALCONY	561	52.1	6
B23	SECOND	3	BALCONY	1272	118.2	15
C21	SECOND	3	BALCONY	1569	145.8	19
C22	SECOND	3	BALCONY	1451	134.8	20
A31	THIRD	3	BALCONY	1716	159.4	10
A32	THIRD	3	BALCONY	1767	164.2	11
B31	THIRD	2	BALCONY	1180	109.6	8
B32	THIRD	1	BALCONY	561	52.1	6
B33	THIRD	3	BALCONY	1272	118.2	15
C31	THIRD	3	BALCONY	1569	145.8	19
C32	THIRD	3	BALCONY	1451	134.8	20
A41	FOURTH	3	BALCONY	1716	159.4	10
A42	FOURTH	3	BALCONY	1767	164.2	11
B41	FOURTH	2	BALCONY	1180	109.6	8
B42	FOURTH	1	BALCONY	561	52.1	6
B43	FOURTH	3	BALCONY	1272	118.2	15
C41	FOURTH	3	BALCONY	1569	145.8	19
C42	FOURTH	3	BALCONY	1451	134.8	20
A51	FIFTH	3	BALCONY	1716	159.4	10
A52	FIFTH	3	BALCONY	1767	164.2	11
B51	FIFTH	2	BALCONY	1180	109.6	8
B52	FIFTH	1	BALCONY	561	52.1	6
B53	FIFTH	3	BALCONY	1272	118.2	15
C51	FIFTH	3	BALCONY	1569	145.8	19
C52	FIFTH	3	BALCONY	1451	134.8	20
A61	SIXTH	3	BALCONY & TERRACE	1716	159.4	12
A62	SIXTH	3	BALCONY & TERRACE	1767	164.2	13
B61	SIXTH	2	BALCONY & TERRACE	1180	109.6	9
B62	SIXTH	1	BALCONY	561	52.1	6
B63	SIXTH	3	BALCONY & TERRACE	1272	118.2	16
C61	SIXTH	3	BALCONY & TERRACE	1569	145.8	21
C62	SIXTH	3	BALCONY & TERRACE	1451	134.8	22



CHARTWELL HOUSE

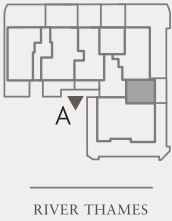
APARTMENT AG2
1 BEDROOM

Ground floor	AG2	
Living/Kitchen	24'7" x 10'11"	(7.5m x 3.3m)
Bedroom	11'8" x 11'	(3.5m x 3.3m)
APARTMENT AREA	566 sq ft	(52.6 sq m)
Total Garden	272 sq ft	(25.3 sq m)
TOTAL AREA	838 sq ft	(77.9 sq m)



LEGEND
WD – Washer/Dryer
W – Wardrobe
WH – Water Heater

APARTMENT NUMBERING SYSTEM
AG2
↑ Apartment number
↑ Floor level
↑ Entrance point

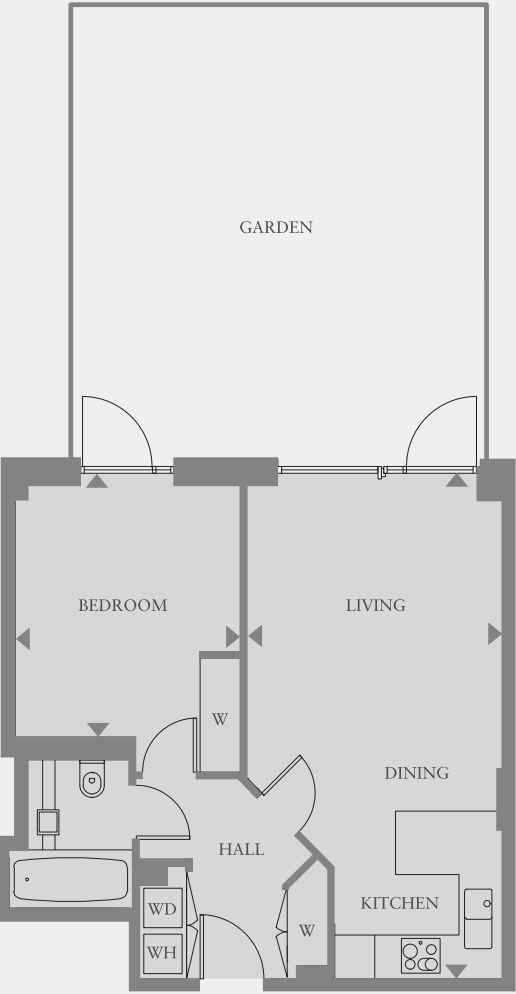


Floor plans shown are for approximate measurements only. Exact layout and sizes may vary.

CHARTWELL HOUSE

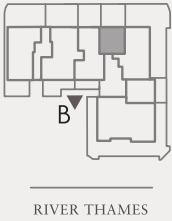
APARTMENT BG2
1 BEDROOM

Ground floor	BG2	
Living/Kitchen	24'4" x 12'6"	(7.4m x 3.8m)
Bedroom	12'7" x 11'	(3.8m x 3.3m)
APARTMENT AREA	560 sq ft	(52.0 sq m)
Total Gardens	529 sq ft	(49.1 sq m)
TOTAL AREA	1089 sq ft	(101.1 sq m)



LEGEND
WD – Washer/Dryer
W – Wardrobe
WH – Water Heater

APARTMENT NUMBERING SYSTEM
BG2
↑ Apartment number
↑ Floor level
↑ Entrance point



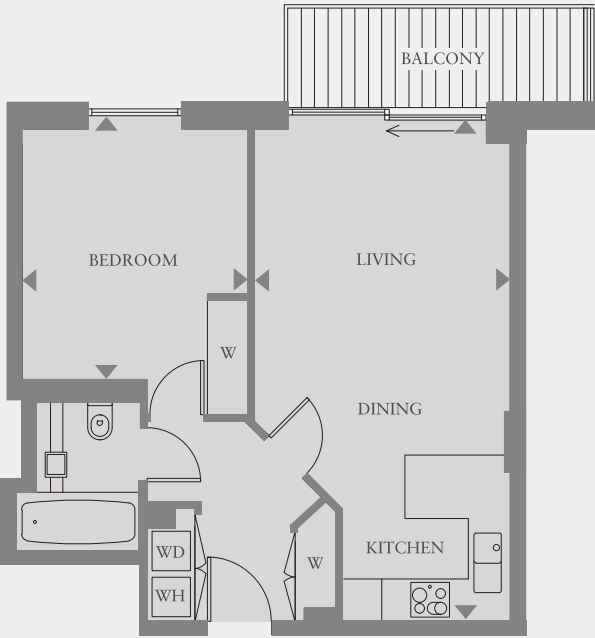
Floor plans shown are for approximate measurements only. Exact layout and sizes may vary.

CHARTWELL HOUSE

APARTMENT B12, B22, B32, B42, B52 and B62
1 BEDROOM

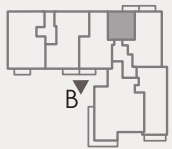
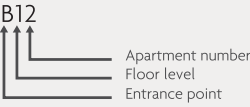
First floor	B12
Second floor	B22
Third floor	B32
Fourth floor	B42
Fifth floor	B52
Sixth floor	B62

Living/Kitchen	24'4" x 12'6"	(7.4m x 3.8m)
Bedroom	12'7" x 11'	(3.8m x 3.3m)
APARTMENT AREA	561 sq ft	(52.1 sq m)
Balcony	70 sq ft	(6.5 sq m)
TOTAL AREA	631 sq ft	(58.6 sq m)



LEGEND
WD – Washer/Dryer
W – Wardrobe
WH – Water Heater

APARTMENT NUMBERING SYSTEM



RIVER THAMES

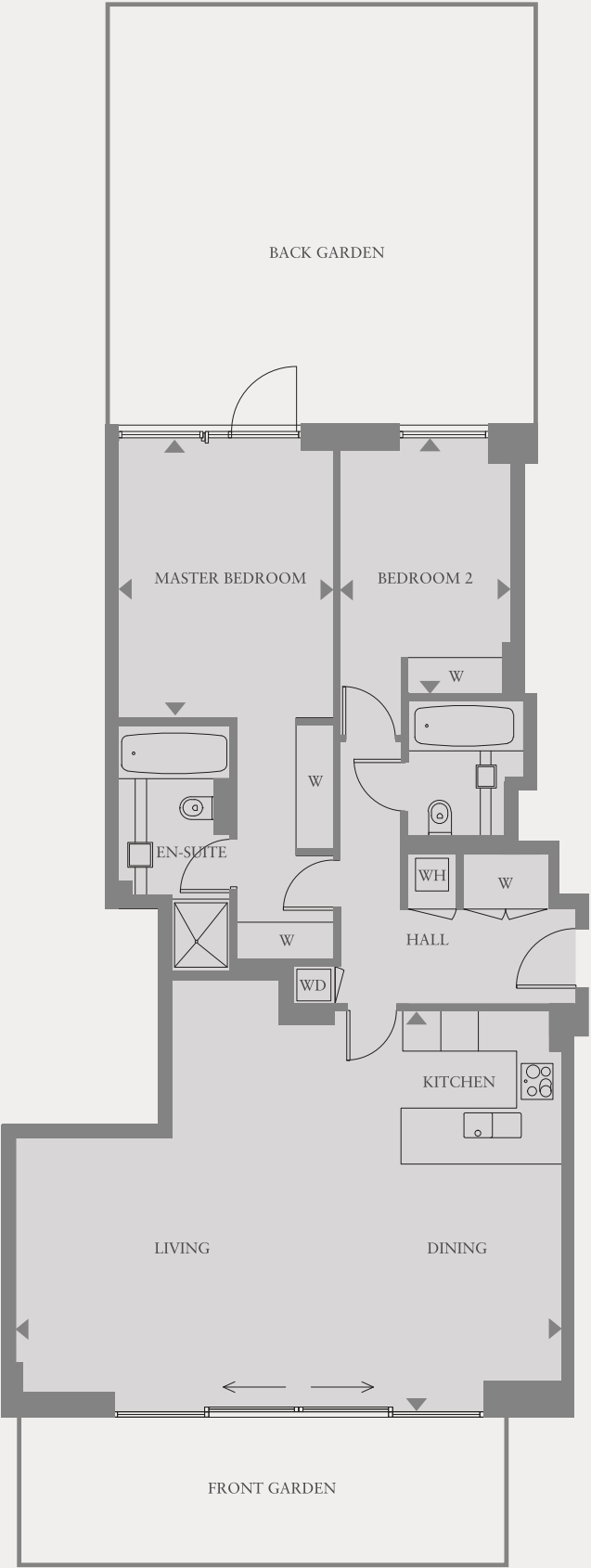


Floor plans shown are for approximate measurements only. Exact layout and sizes may vary.

CHARTWELL HOUSE

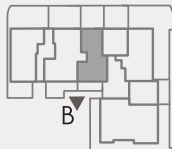
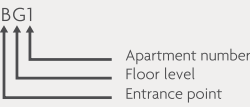
APARTMENT BG1
2 BEDROOM

Ground floor	BG1
Living/Kitchen	28'5" x 20'6" (8.6m x 6.2m)
Master Bedroom	14'6" x 11'4" (4.4m x 3.4m)
Bedroom 2	13' x 9' (3.9m x 2.7m)
APARTMENT AREA	1154 sq ft (107.2 sq m)
Total Gardens	684 sq ft (63.5 sq m)
TOTAL AREA	1838 sq ft (170.7 sq m)



LEGEND
WD – Washer/Dryer
W – Wardrobe
WH – Water Heater

APARTMENT NUMBERING SYSTEM



RIVER THAMES



Floor plans shown are for approximate measurements only. Exact layout and sizes may vary.

CHARTWELL HOUSE

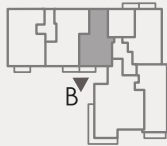
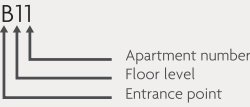
APARTMENT B11, B21, B31, B41 and B51
2 BEDROOM

First floor	B11
Second floor	B21
Third floor	B31
Fourth floor	B41
Fifth floor	B51

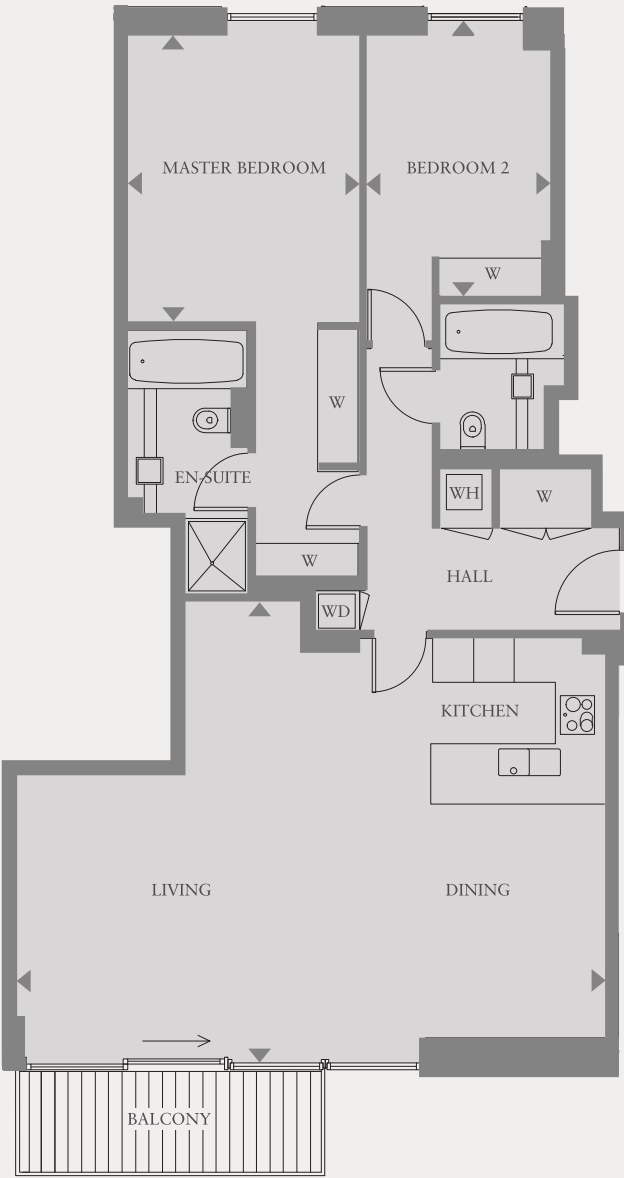
Living/Kitchen	28'6" x 22'1"	(8.7m x 6.7m)
Master Bedroom	14'3" x 11'4"	(4.3m x 3.4m)
Bedroom 2	13' x 9'	(3.9m x 2.7m)
APARTMENT AREA	1180 sq ft	(109.6 sq m)
Balcony	71 sq ft	(6.6 sq m)
TOTAL AREA	1251 sq ft	(116.2 sq m)

LEGEND
WD – Washer/Dryer
W – Wardrobe
WH – Water Heater

APARTMENT NUMBERING SYSTEM



RIVER THAMES



Floor plans shown are for approximate measurements only. Exact layout and sizes may vary.

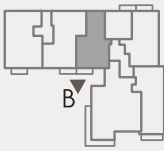
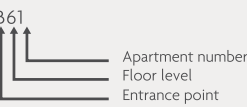
CHARTWELL HOUSE

APARTMENT B61
2 BEDROOM

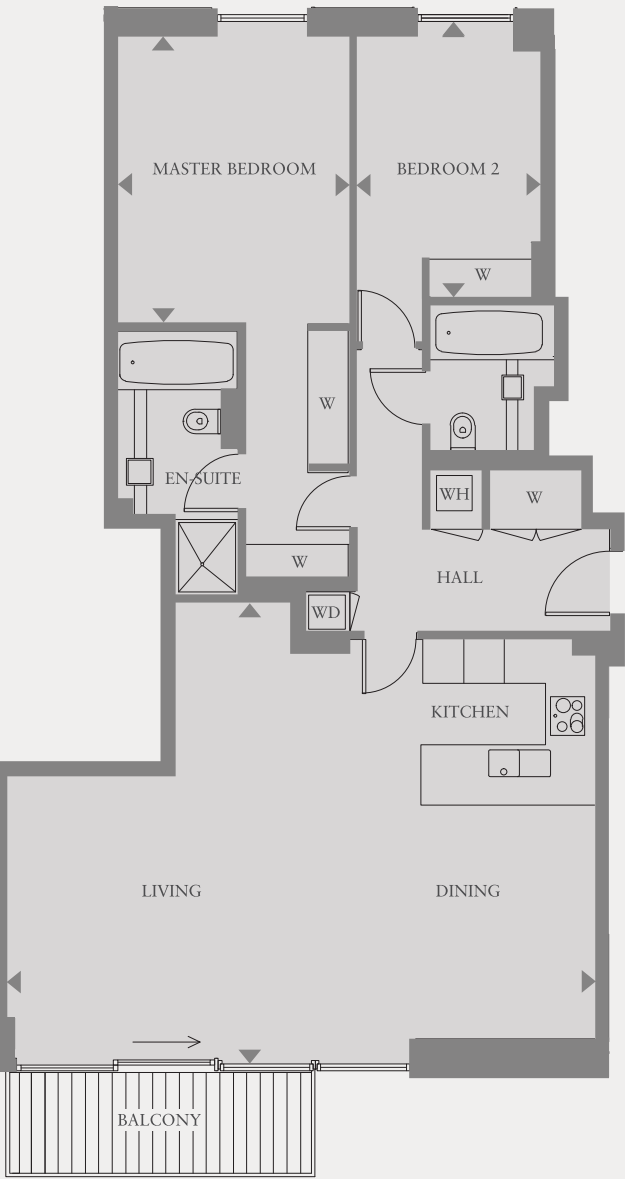
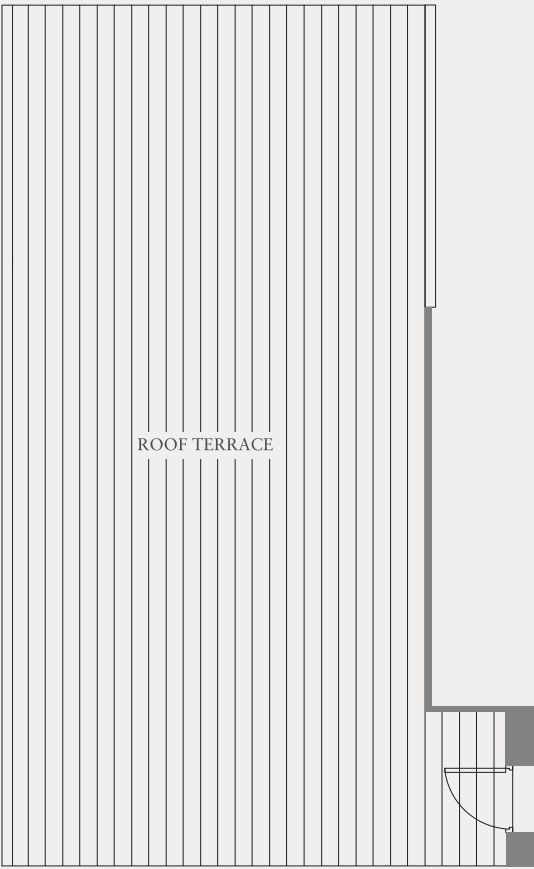
Sixth floor	B61	
Living/Kitchen	28'6" x 22'1"	(8.7m x 6.7m)
Master Bedroom	14'3" x 11'4"	(4.3m x 3.4m)
Bedroom 2	13' x 9'	(3.9m x 2.7m)
APARTMENT AREA	1180 sq ft	(109.6 sq m)
Balcony	71 sq ft	(6.6 sq m)
Roof Terrace	770 sq ft	(71.5 sq m)
TOTAL AREA	2021 sq ft	(187.7 sq m)

LEGEND
WD – Washer/Dryer
W – Wardrobe
WH – Water Heater

APARTMENT NUMBERING SYSTEM



RIVER THAMES



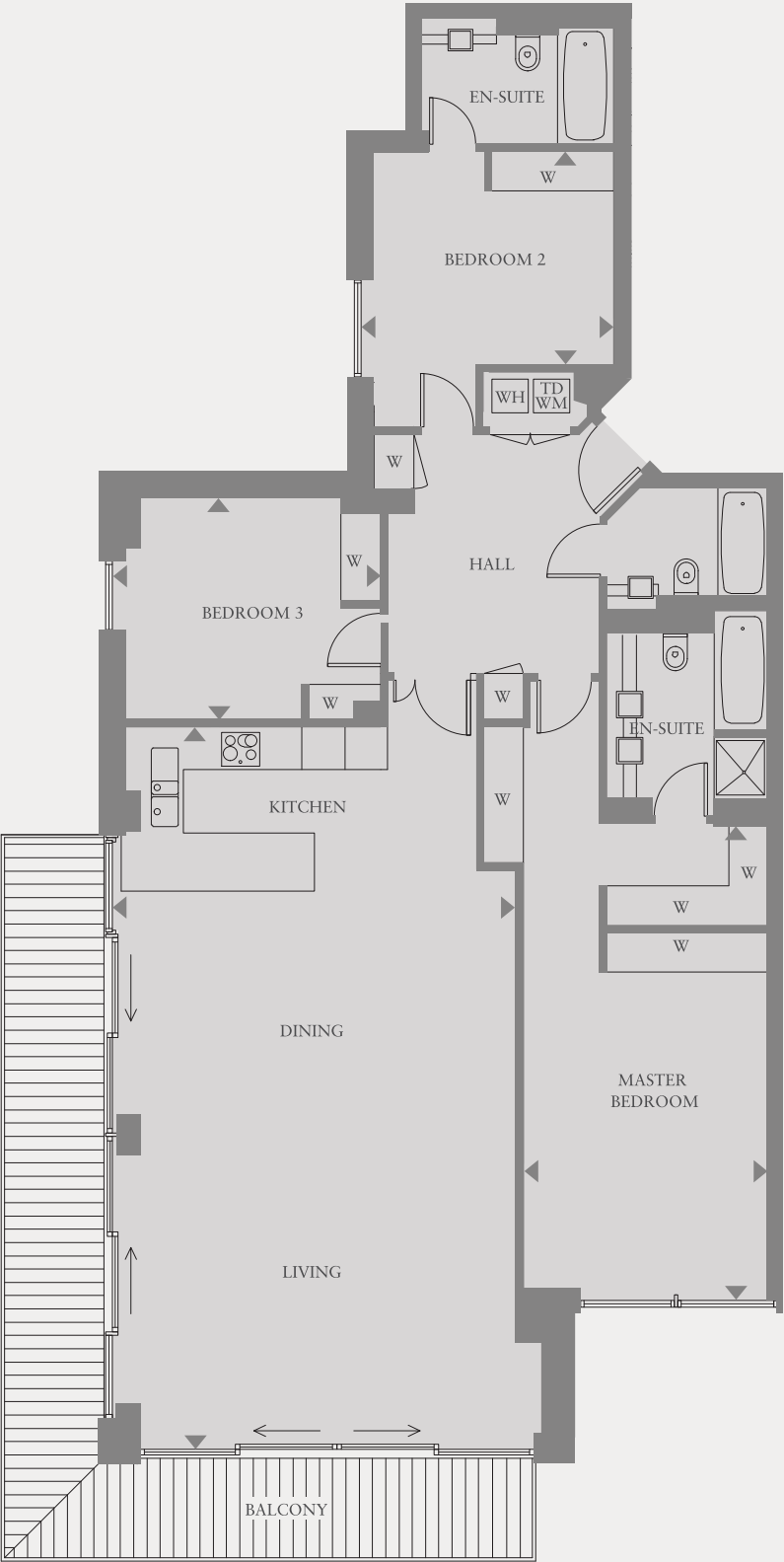
Floor plans shown are for approximate measurements only. Exact layout and sizes may vary.

CHARTWELL HOUSE

APARTMENT A11, A21, A31, A41 and A51
3 BEDROOM

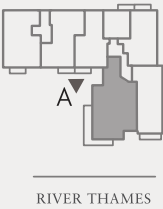
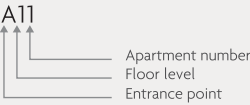
First floor	A11
Second floor	A21
Third floor	A31
Fourth floor	A41
Fifth floor	A51

Living/Kitchen	35'5" x 19'9"	(10.8m x 6.0m)
Master Bedroom	23'1" x 12'1"	(7.0m x 3.7m)
Bedroom 2	12'3" x 10'6"	(3.7m x 3.2m)
Bedroom 3	12'10" x 11'2"	(3.9m x 3.4m)
APARTMENT AREA	1716 sq ft	(159.4 sq m)
Balcony	280 sq ft	(26.0 sq m)
TOTAL AREA	1996 sq ft	(185.4 sq m)



- LEGEND
- TD – Tumble Dryer
 - WM – Washing Machine
 - W – Wardrobe
 - WH – Water Heater

APARTMENT NUMBERING SYSTEM



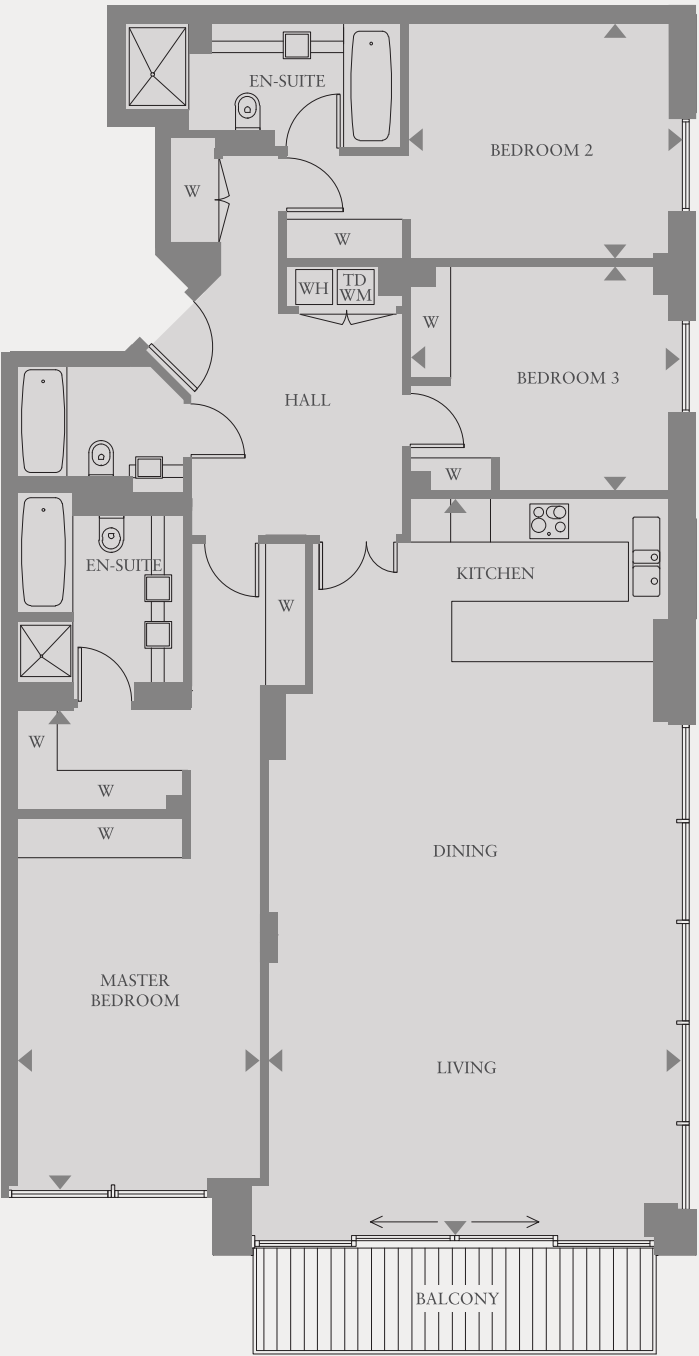
Floor plans shown are for approximate measurements only. Exact layout and sizes may vary.

CHARTWELL HOUSE

APARTMENT A12, A22, A32, A42 and A52
3 BEDROOM

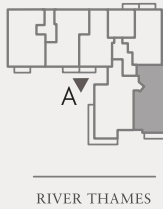
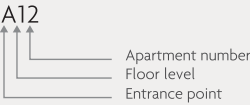
First floor	A12
Second floor	A22
Third floor	A32
Fourth floor	A42
Fifth floor	A52

Living/Kitchen	35'11" x 19'11"	(10.9m x 6.0m)
Master Bedroom	23'1" x 11'10"	(7.0m x 3.6m)
Bedroom 2	13'1" x 11'6"	(4.0m x 3.5m)
Bedroom 3	13' x 11'	(3.9m x 3.3m)
APARTMENT AREA	1767 sq ft	(164.2 sq m)
Balcony	96 sq ft	(8.9 sq m)
TOTAL AREA	1863 sq ft	(173.1 sq m)



- LEGEND
- TD – Tumble Dryer
 - WM – Washing Machine
 - W – Wardrobe
 - WH – Water Heater

APARTMENT NUMBERING SYSTEM



Floor plans shown are for approximate measurements only. Exact layout and sizes may vary.

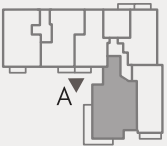
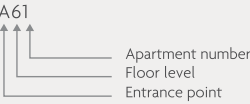
CHARTWELL HOUSE

APARTMENT A61
3 BEDROOM

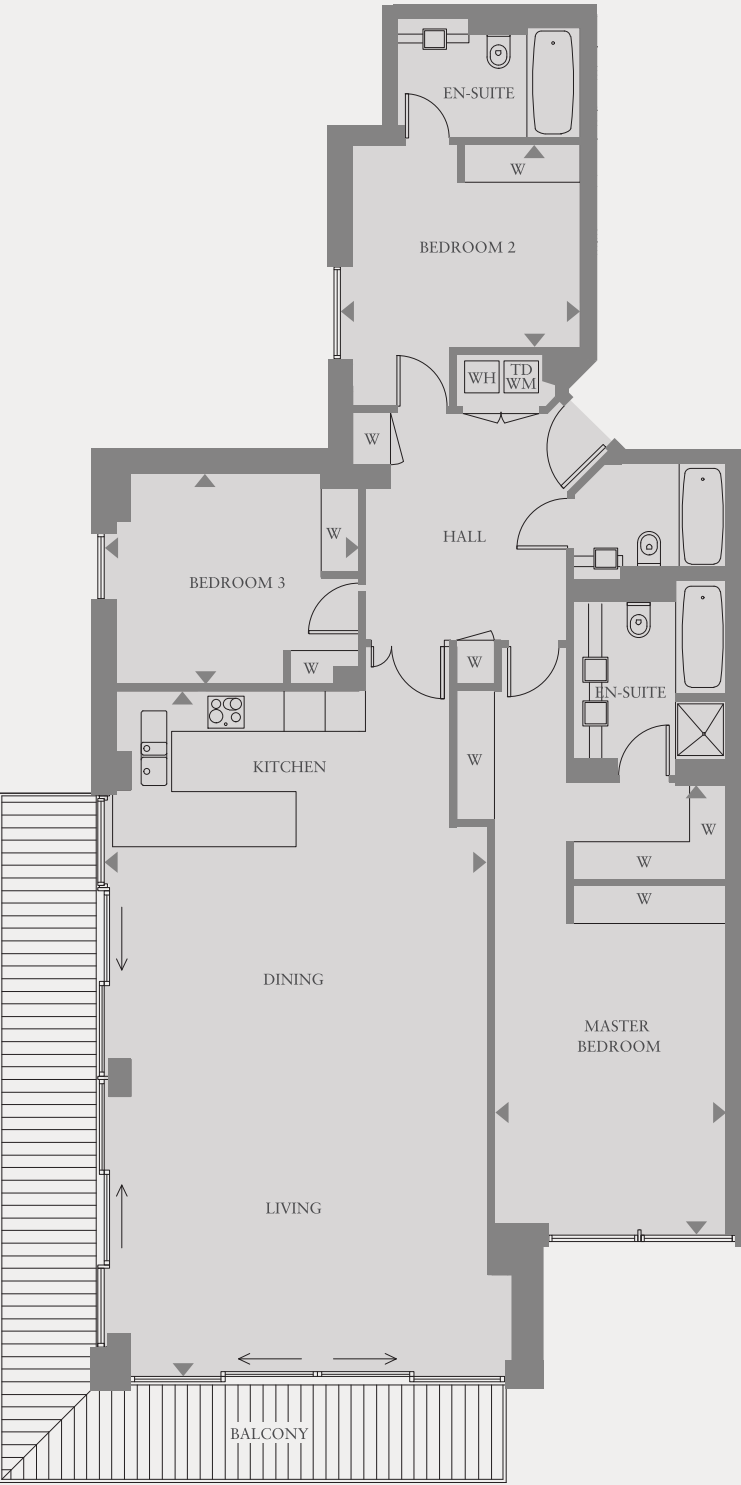
Sixth floor	A61	
Living/Kitchen	35'5" x 19'9"	(10.8m x 6.0m)
Master Bedroom	23'1" x 12'1"	(7.0m x 3.7m)
Bedroom 2	12'3" x 10'6"	(3.7m x 3.2m)
Bedroom 3	12'10" x 11.2"	(3.9m x 3.4m)
APARTMENT AREA	1716 sq ft	(159.4 sq m)
Balcony	280 sq ft	(26.0 sq m)
Roof Terrace	259 sq ft	(24.1 sq m)
TOTAL AREA	2255 sq ft	(209.5 sq m)

- LEGEND
- TD – Tumble Dryer
 - WM – Washing Machine
 - W – Wardrobe
 - WH – Water Heater

APARTMENT NUMBERING SYSTEM



RIVER THAMES



Floor plans shown are for approximate measurements only. Exact layout and sizes may vary.

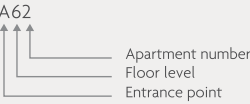
CHARTWELL HOUSE

APARTMENT A62
3 BEDROOM

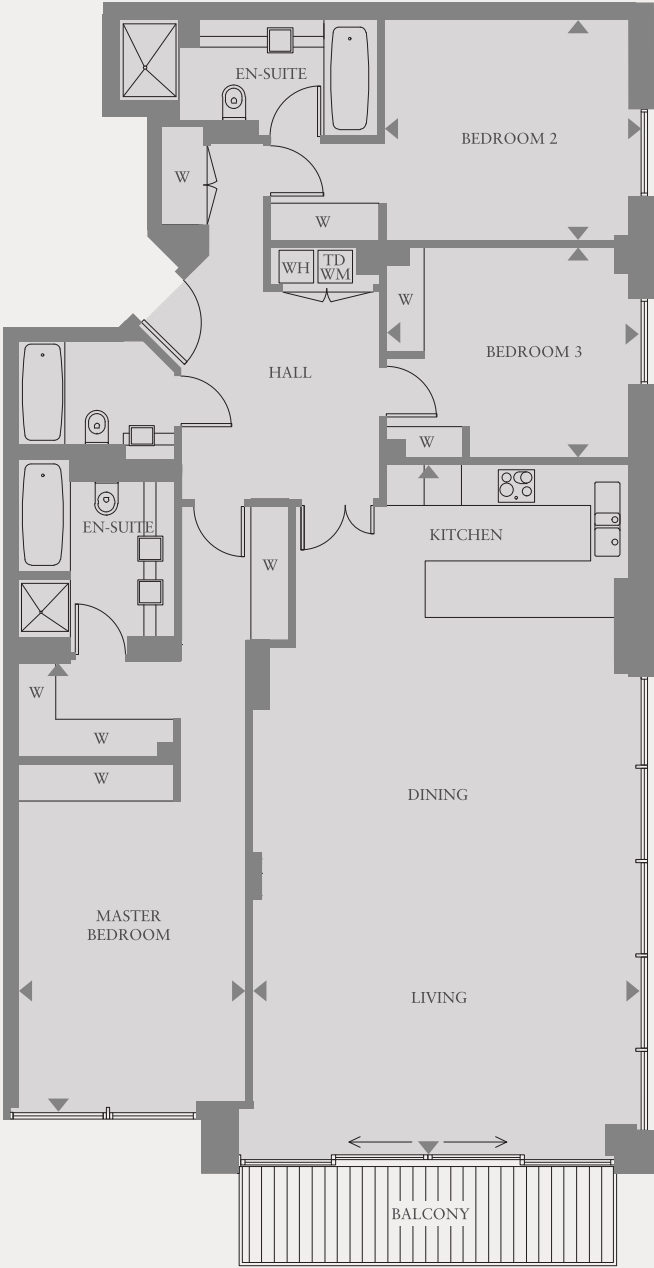
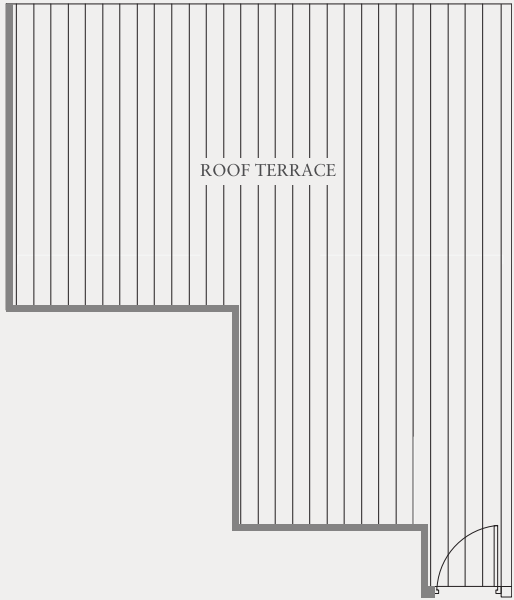
Sixth floor	A62	
Living/Kitchen	35'11" x 19'11"	(10.9m x 6.0m)
Master Bedroom	23'1" x 11'10"	(7.0m x 3.6m)
Bedroom 2	13'1" x 11'6"	(4.0m x 3.5m)
Bedroom 3	13' x 11'	(3.9m x 3.3m)
APARTMENT AREA	1767 sq ft	(164.2 sq m)
Balcony	96 sq ft	(8.9 sq m)
Roof Terrace	437 sq ft	(40.6 sq m)
TOTAL AREA	2300 sq ft	(213.7 sq m)

- LEGEND
- TD – Tumble Dryer
 - WM – Washing Machine
 - W – Wardrobe
 - WH – Water Heater

APARTMENT NUMBERING SYSTEM



RIVER THAMES

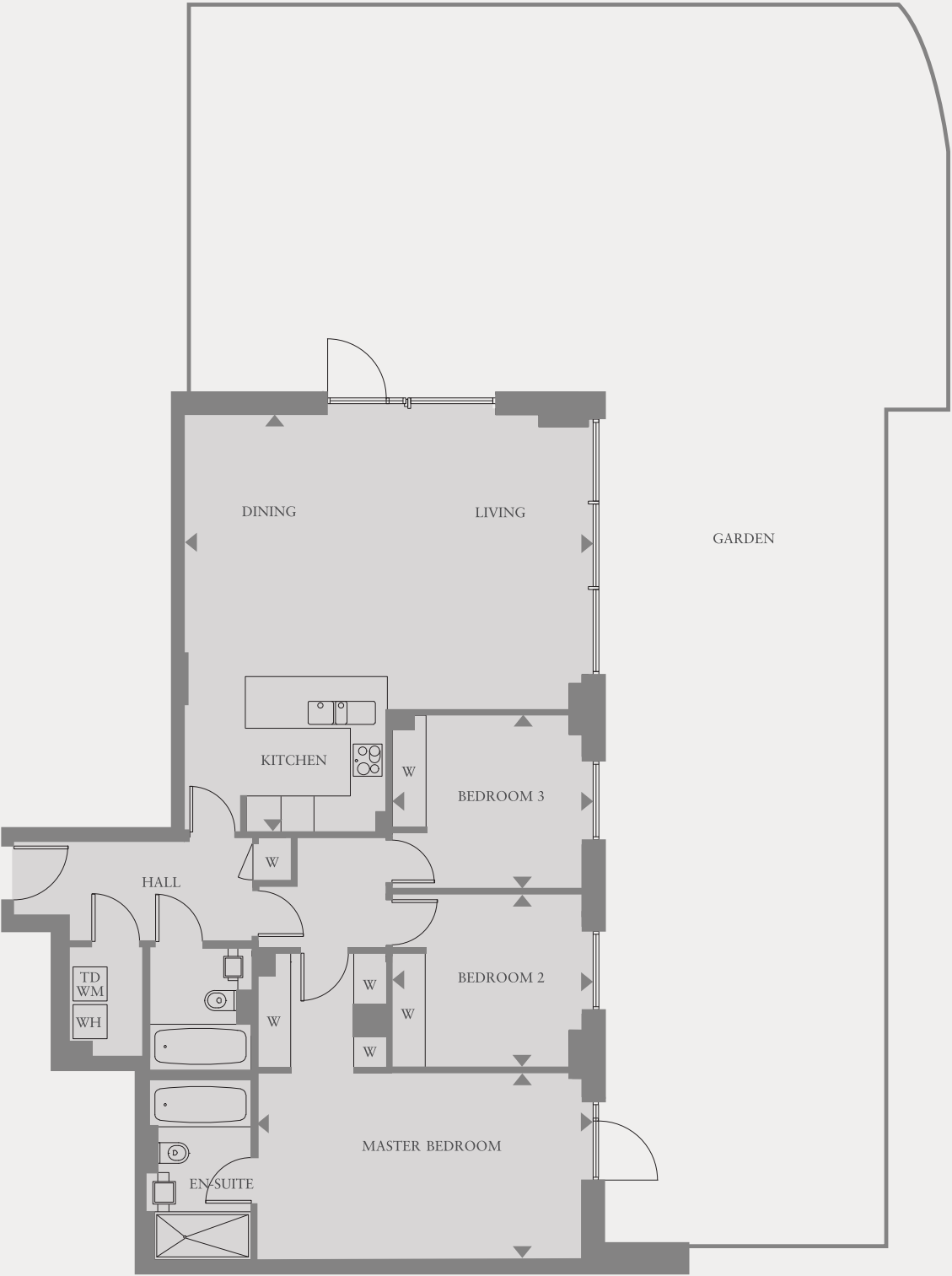


Floor plans shown are for approximate measurements only. Exact layout and sizes may vary.

CHARTWELL HOUSE

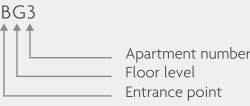
APARTMENT BG3
3 BEDROOM

Ground floor	BG3		
Living/Kitchen	24'3" x 23'4"	(7.4m x 7.1m)	
Master Bedroom	19'1" x 10'10"	(5.8m x 3.3m)	
Bedroom 2	11'2" x 10'	(3.4m x 3.0m)	
Bedroom 3	11'4" x 10'1"	(3.4m x 3.0m)	
APARTMENT AREA	1279 sq ft	(118.8 sq m)	
Total Gardens	1779 sq ft	(165.3 sq m)	
TOTAL AREA	3058 sq ft	(284.1 sq m)	



- LEGEND
- TD - Tumble Dryer
 - WM - Washing Machine
 - W - Wardrobe
 - WH - Water Heater

APARTMENT NUMBERING SYSTEM



RIVER THAMES

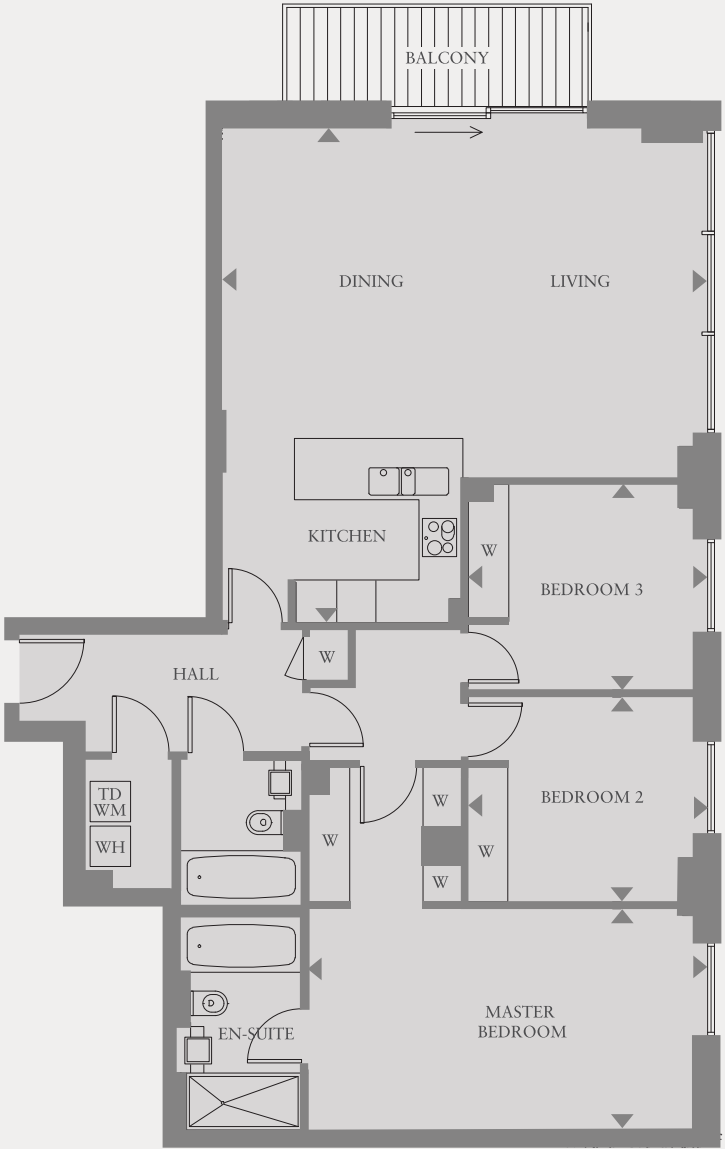
Floor plans shown are for approximate measurements only. Exact layout and sizes may vary.

CHARTWELL HOUSE

APARTMENT B13, B23, B33, B43 and B53
3 BEDROOM

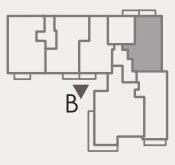
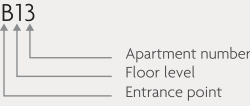
First floor	B13		
Second floor	B23		
Third floor	B33		
Fourth floor	B43		
Fifth floor	B53		

Living/Kitchen	24'4" x 23'3"	(7.4m x 7.1m)	
Master Bedroom	19'1" x 10'10"	(5.8m x 3.3m)	
Bedroom 2	11'2" x 10'	(3.4m x 3.0m)	
Bedroom 3	11'4" x 10'1"	(3.4m x 3.0m)	
APARTMENT AREA	1272 sq ft	(118.2 sq m)	
Balcony	70 sq ft	(6.5 sq m)	
TOTAL AREA	1342 sq ft	(124.7 sq m)	



- LEGEND
- TD - Tumble Dryer
 - WM - Washing Machine
 - W - Wardrobe
 - WH - Water Heater

APARTMENT NUMBERING SYSTEM



RIVER THAMES

Floor plans shown are for approximate measurements only. Exact layout and sizes may vary.

CHARTWELL HOUSE

APARTMENT B63
3 BEDROOM

Sixth floor	B63	
Living/Kitchen	24'4" x 23'3"	(7.4m x 7.1m)
Master Bedroom	19'1" x 10'10"	(5.8m x 3.3m)
Bedroom 2	11'2" x 10'	(3.4m x 3.0m)
Bedroom 3	11'4" x 10'1"	(3.4m x 3.0m)
APARTMENT AREA	1272 sq ft	(118.2 sq m)
Balcony	70 sq ft	(6.5 sq m)
Roof Terrace	431 sq ft	(40.0 sq m)
TOTAL AREA	1773 sq ft	(164.7 sq m)

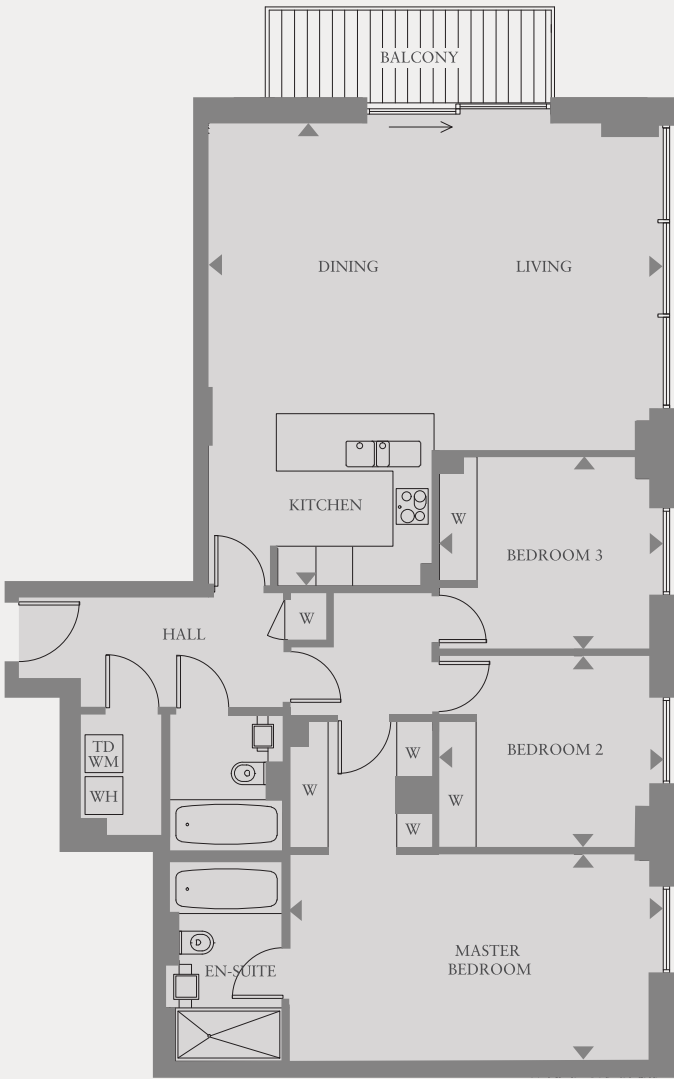
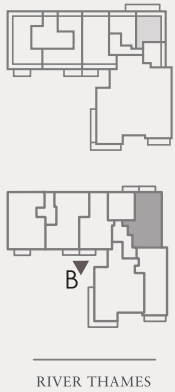
LEGEND

TD – Tumble Dryer
WM – Washing Machine
W – Wardrobe
WH – Water Heater

APARTMENT NUMBERING SYSTEM

B63

Apartment number
Floor level
Entrance point



Floor plans shown are for approximate measurements only. Exact layout and sizes may vary.

CHARTWELL HOUSE

APARTMENT CG1
3 BEDROOM

Ground floor	CG1	
Living/Kitchen	24'5" x 23'3"	(7.4m x 7.1m)
Master Bedroom	15'1" x 12'	(4.6m x 3.6m)
Bedroom 2	12'11" x 8'10"	(3.9m x 2.7m)
Bedroom 3	10'7" x 9'5"	(3.2m x 2.8m)
APARTMENT AREA	1343 sq ft	(124.8 sq m)
Total Gardens	1356 sq ft	(126.0 sq m)
TOTAL AREA	2699 sq ft	(250.8 sq m)

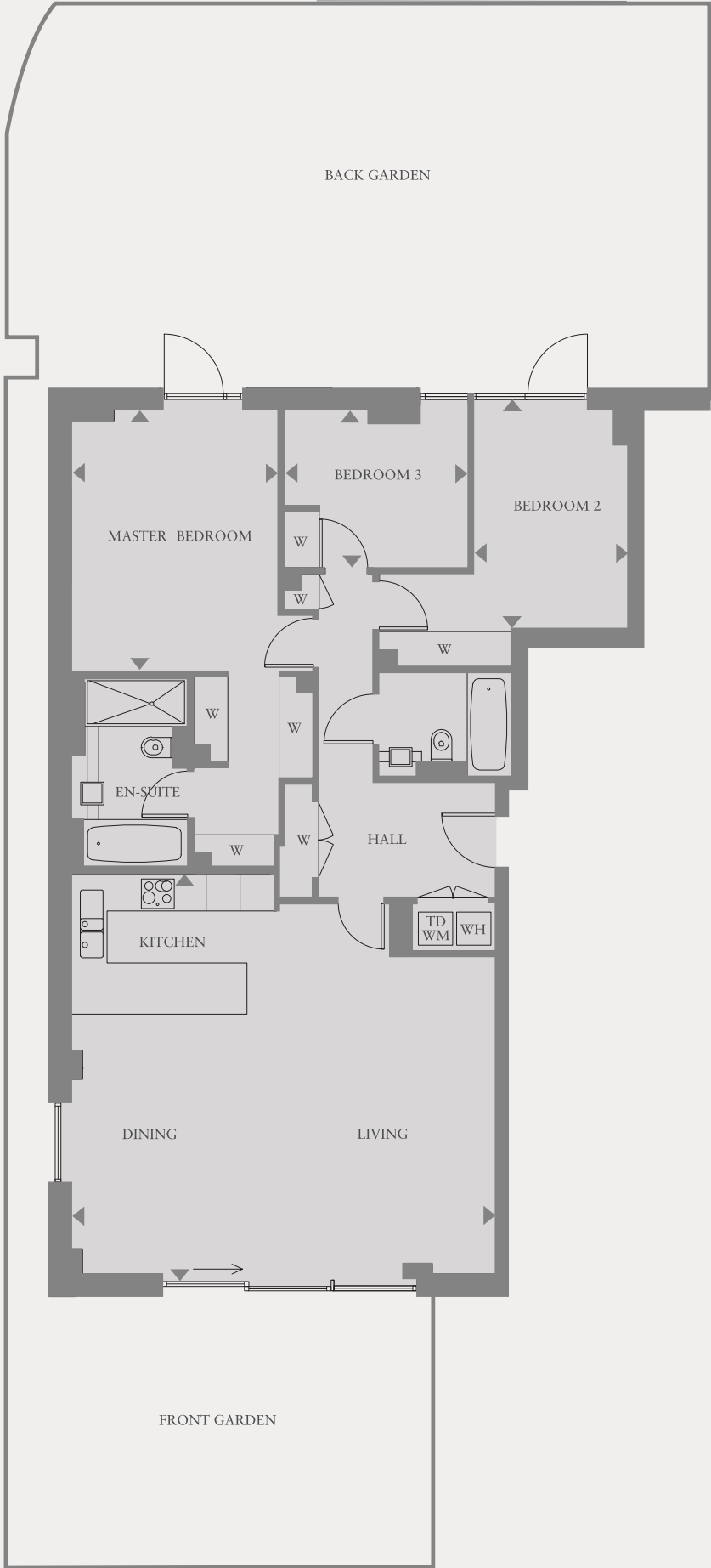
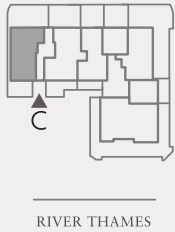
LEGEND

TD – Tumble Dryer
WM – Washing Machine
W – Wardrobe
WH – Water Heater

APARTMENT NUMBERING SYSTEM

CG1

Apartment number
Floor level
Entrance point

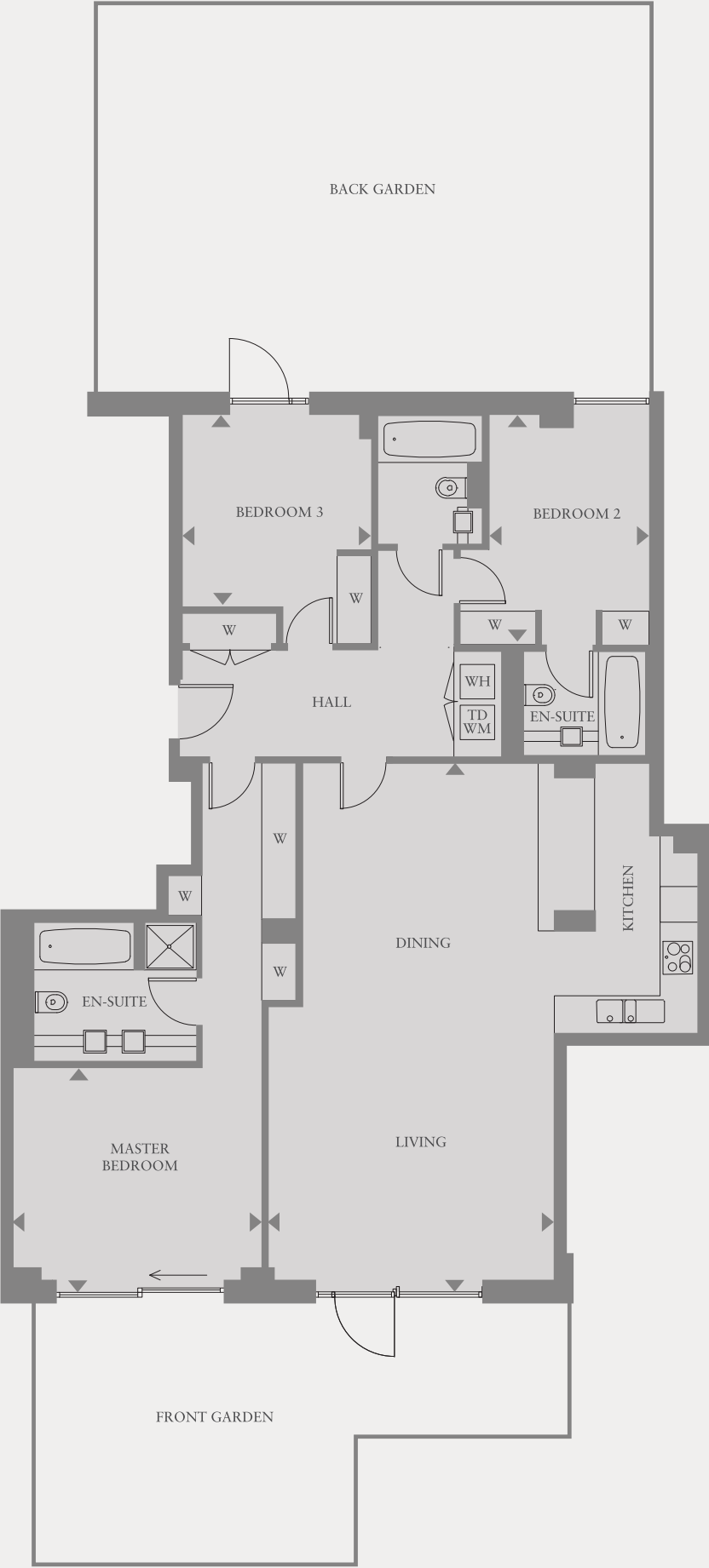


Floor plans shown are for approximate measurements only. Exact layout and sizes may vary.

CHARTWELL HOUSE

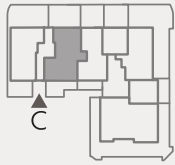
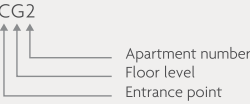
APARTMENT CG2
3 BEDROOM

Ground floor	CG2	
Living/Kitchen	30' x 16'5"	(9.1m x 5.0m)
Master Bedroom	14'3" x 12'6"	(4.3m x 3.8m)
Bedroom 2	13'4" x 9'2"	(4.0m x 2.8m)
Bedroom 3	11'1" x 10'10"	(3.3m x 3.3m)
APARTMENT AREA	1498 sq ft	(139.2 sq m)
Total Gardens	1075 sq ft	(99.9 sq m)
TOTAL AREA	2573 sq ft	(239.1 sq m)



- LEGEND
- TD - Tumble Dryer
 - WM - Washing Machine
 - W - Wardrobe
 - WH - Water Heater

APARTMENT NUMBERING SYSTEM



RIVER THAMES

Floor plans shown are for approximate measurements only. Exact layout and sizes may vary.

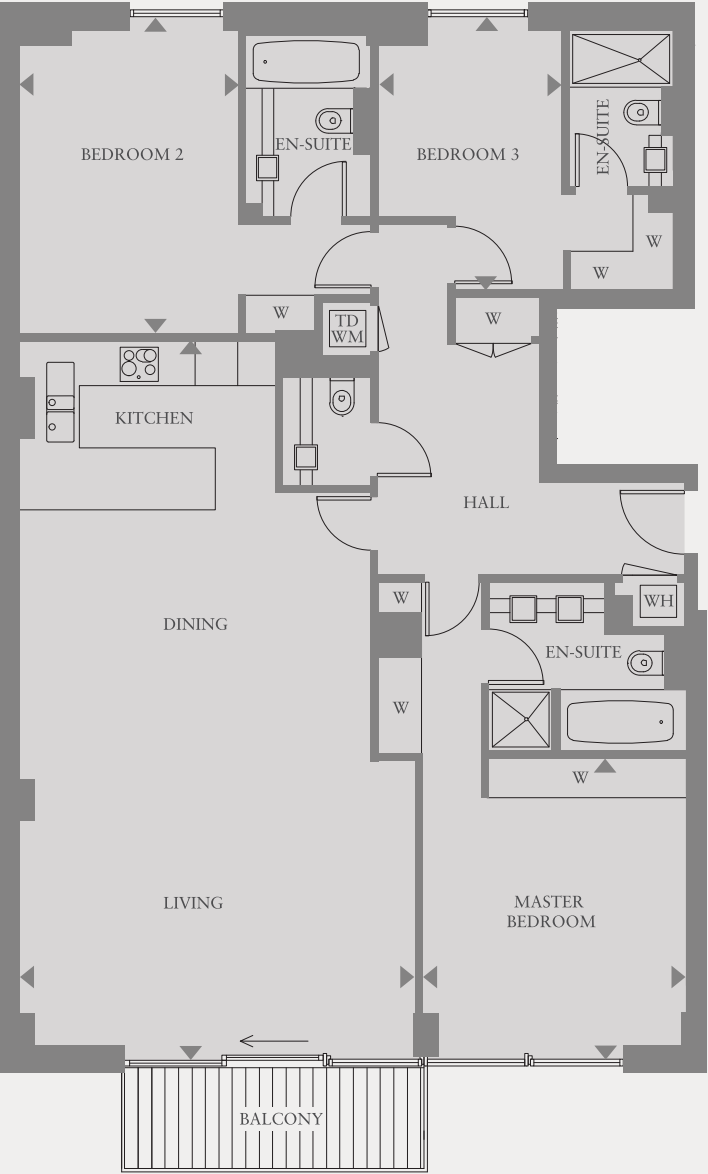


CHARTWELL HOUSE

APARTMENT C11, C21, C31, C41 and C51
3 BEDROOM

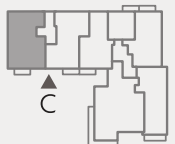
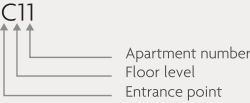
First floor	C11	
Second floor	C21	
Third floor	C31	
Fourth floor	C41	
Fifth floor	C51	

Living/Kitchen	34'10" x 19'5"	(10.6m x 5.9m)
Master Bedroom	14'7" x 12'11"	(4.4m x 3.9m)
Bedroom 2	15'1" x 10'10"	(4.6m x 3.3m)
Bedroom 3	12'11" x 9'	(3.9m x 2.7m)
APARTMENT AREA	1569 sq ft	(145.8 sq m)
Balcony	71 sq ft	(6.6 sq m)
TOTAL AREA	1640 sq ft	(152.4 sq m)



- LEGEND
- TD - Tumble Dryer
 - WM - Washing Machine
 - W - Wardrobe
 - WH - Water Heater

APARTMENT NUMBERING SYSTEM



RIVER THAMES

Floor plans shown are for approximate measurements only. Exact layout and sizes may vary.

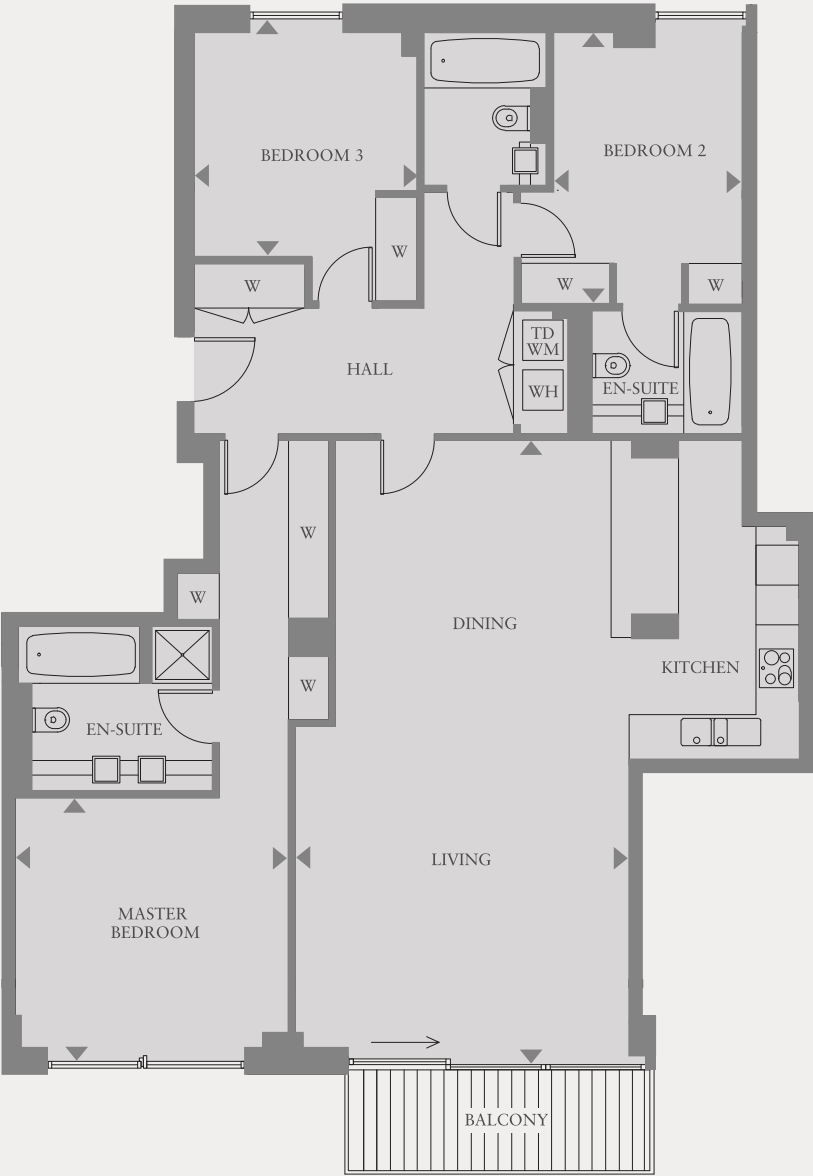


CHARTWELL HOUSE

APARTMENT C12, C22, C32, C42 and C52
3 BEDROOM

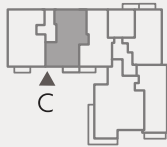
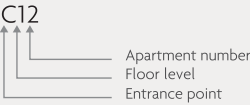
First floor	C12
Second floor	C22
Third floor	C32
Fourth floor	C42
Fifth floor	C52

Living/Kitchen	29'11" x 16'3"	(9.1m x 4.9m)
Master Bedroom	13'4" x 12'6"	(4.0m x 3.8m)
Bedroom 2	13'7" x 9'2"	(4.1m x 2.8m)
Bedroom 3	11'4" x 10'10"	(3.4m x 3.3m)
APARTMENT AREA	1451 sq ft	(134.8 sq m)
Balcony	71 sq ft	(6.6 sq m)
TOTAL AREA	1522 sq ft	(141.4 sq m)



- LEGEND
- TD - Tumble Dryer
 - WM - Washing Machine
 - W - Wardrobe
 - WH - Water Heater

APARTMENT NUMBERING SYSTEM



RIVER THAMES



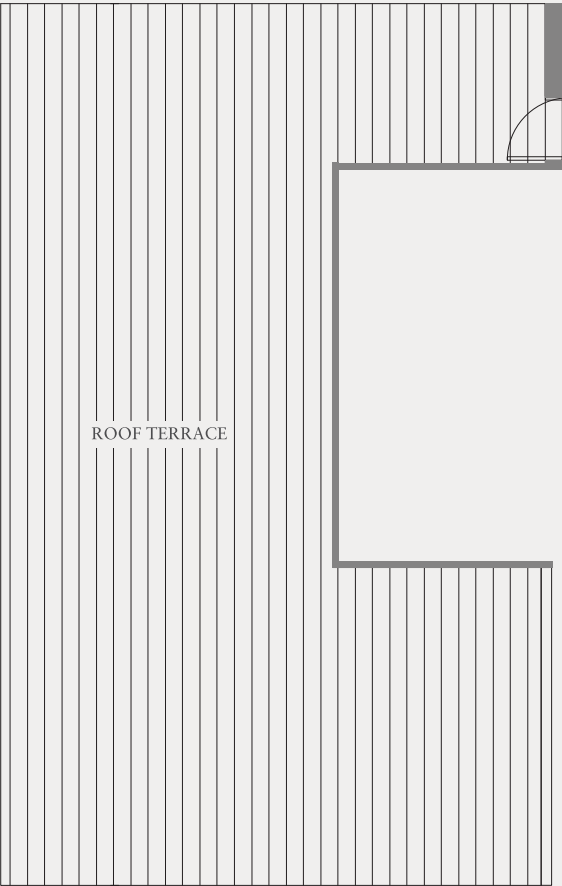
Floor plans shown are for approximate measurements only. Exact layout and sizes may vary.

CHARTWELL HOUSE

APARTMENT C61
3 BEDROOM

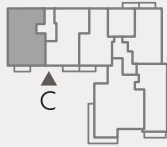
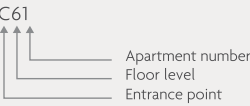
Sixth floor	C61
-------------	-----

Living/Kitchen	34'10" x 19'5"	(10.6m x 5.9m)
Master Bedroom	14'7" x 12'11"	(4.4m x 3.9m)
Bedroom 2	15'1" x 10'10"	(4.6m x 3.3m)
Bedroom 3	12'11" x 9'	(3.9m x 2.7m)
APARTMENT AREA	1569 sq ft	(145.8 sq m)
Balcony	71 sq ft	(6.6 sq m)
Roof Terrace	723 sq ft	(67.2 sq m)
TOTAL AREA	2363sq ft	(219.6 sq m)



- LEGEND
- TD - Tumble Dryer
 - WM - Washing Machine
 - W - Wardrobe
 - WH - Water Heater

APARTMENT NUMBERING SYSTEM



RIVER THAMES



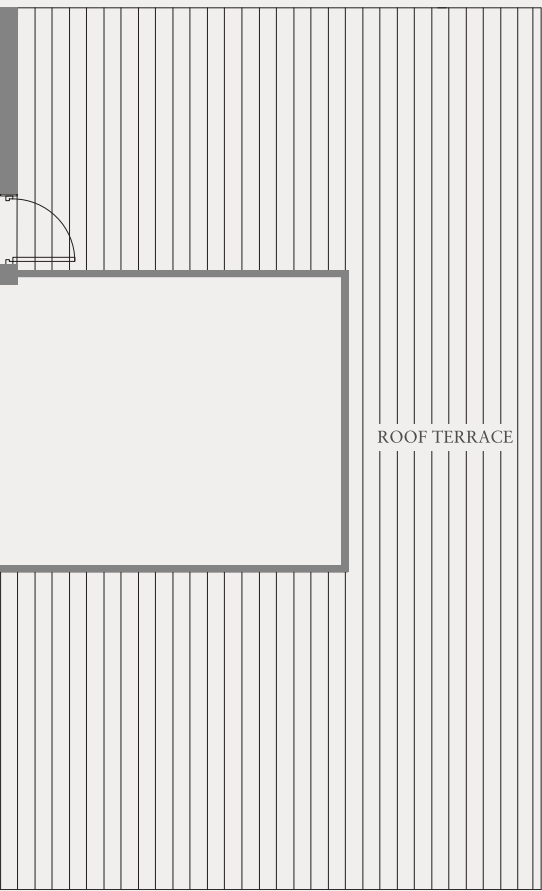
Floor plans shown are for approximate measurements only. Exact layout and sizes may vary.

CHARTWELL HOUSE

APARTMENT C62
3 BEDROOM

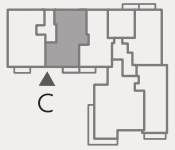
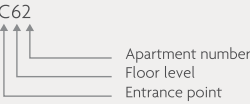
Sixth floor	C62
-------------	-----

Living/Kitchen	29'11" x 16'3" (9.1m x 4.9m)
Master Bedroom	13'4" x 12'6" (4.0m x 3.8m)
Bedroom 2	13'7" x 9'2" (4.1m x 2.8m)
Bedroom 3	11'4" x 10'10" (3.4m x 3.3m)
APARTMENT AREA	1451 sq ft (134.8 sq m)
Balcony	71 sq ft (6.6 sq m)
Roof Terrace	855 sq ft (79.4 sq m)
TOTAL AREA	2377 sq ft (220.8 sq m)

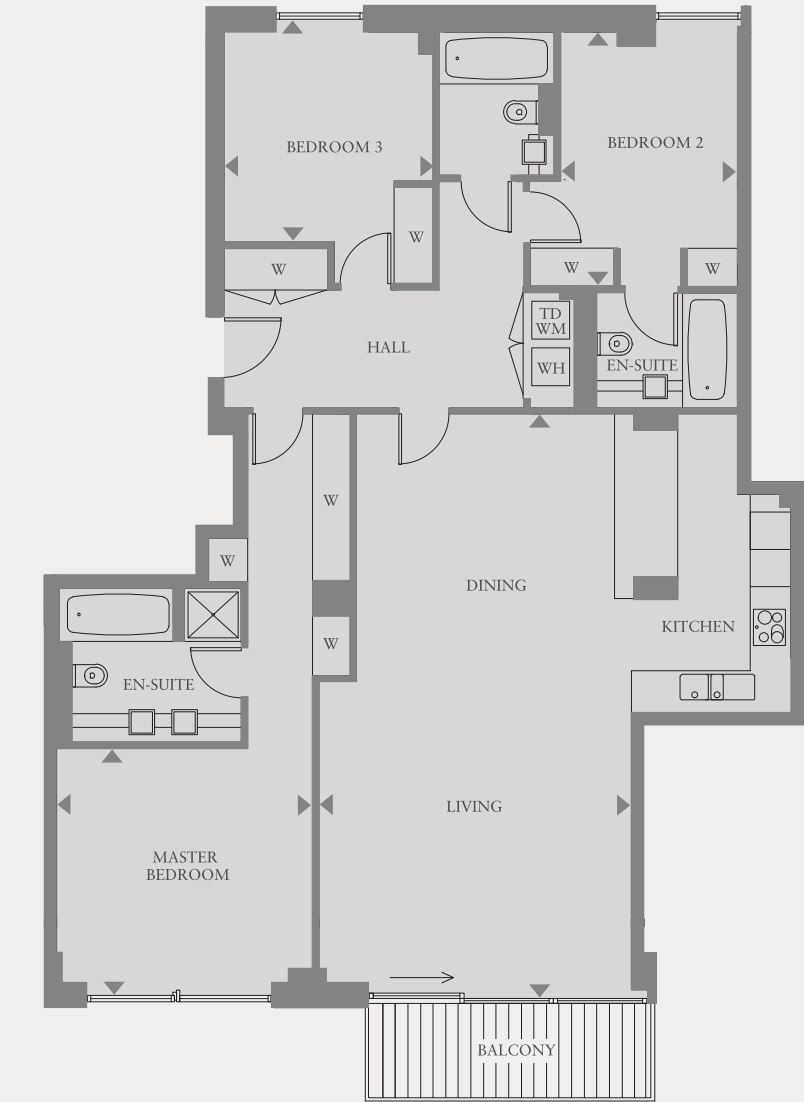


LEGEND
TD - Tumble Dryer
WM - Washing Machine
W - Wardrobe
WH - Water Heater

APARTMENT NUMBERING SYSTEM



RIVER THAMES



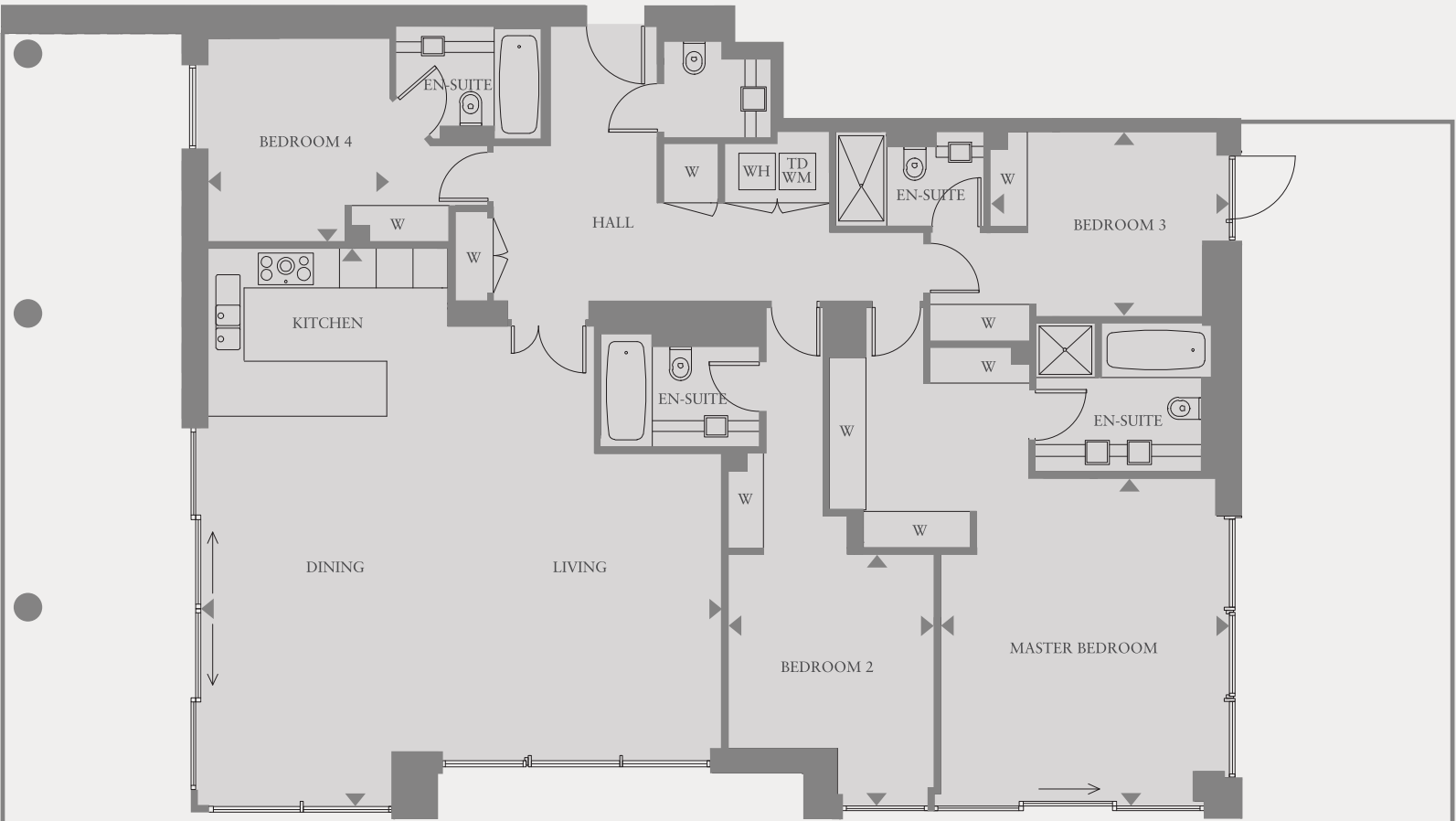
Floor plans shown are for approximate measurements only. Exact layout and sizes may vary.

CHARTWELL HOUSE

APARTMENT AG1
4 BEDROOM

Ground floor	AG1
--------------	-----

Living/Kitchen	29'9" x 28'2" (9.1 m x 8.6m)
Master Bedroom	17'5" x 15'4" (5.3m x 4.6m)
Bedroom 2	13'2" x 11'1" (4.0m x 3.3m)
Bedroom 3	12'7" x 10' (3.8 m x 3.0m)
Bedroom 4	7'1" x 6'5" (3.3m x 3.0m)
APARTMENT AREA	2126 sq ft (197.5 sq m)
Total Gardens	2,071 sq ft (192.4 sq m)
TOTAL AREA	4197 sq ft (389.9 sq m)



GARDEN



Floor plans shown are for approximate measurements only. Exact layout and sizes may vary.



CHARTWELL HOUSE

SPECIFICATION

INSPIRED DESIGN

Main Structure

The framework of the buildings is generally of reinforced concrete construction. The external façade of the buildings is clad in natural limestone with integrated ventilation louvres, aluminium feature channels and architectural vertical fins.

The roofs of the buildings are laid with a high performance damp proof membrane and finished with precast paving or shingle as appropriate. In addition, treated timber decking is provided to terraces on upper levels.

Aluminium powder coated double glazed windows and doors to balconies and terraces are provided where applicable.

Walls

The walls are white painted skimmed plasterboard, with painted MDF skirting. Polished natural stone wall tiles are provided to all bathrooms. Stone skirting is provided in the entrance hall to match the flooring.

Ceilings

All ceilings are white painted skimmed plasterboard.

Flooring

All apartments are fitted with engineered hardwood flooring in all living spaces, including kitchens. Additionally, bedrooms are fitted with a high quality wool mix carpet. Entrance halls, bathrooms, shower rooms and WCs are fitted with honed stone floor tiles where applicable.

Wardrobes

Bespoke built-in wardrobes are fitted to all bedrooms. Wardrobes in master bedrooms have veneered drawers to match the internal doors.

Balconies

Where provided, the balconies are finished with treated timber decking with glass balustrade and stainless steel handrail.

Lift

The lifts serve all floors within each building including the basement car park.

EXQUISITE KITCHENS

Kitchens

Kitchens are fitted with bespoke designed modular cabinets with high gloss lacquered doors to standard units. Full height units are of oak veneer with pelmet LED lighting under cabinets.

All cabinets and drawers have a discreet handleless design and are fitted with soft-close hinges and runners.

Worktops are of polished reconstituted stone with back-painted glass splashback.

The under-mounted stainless steel sink is fitted with a deck mounted chrome mixer tap. One and two bedroom apartments have a single sink, three bedroom apartments have a one and a half bowl sink and four and five bedroom apartments have a double sink.

Integrated appliances are generally by Gaggenau unless otherwise stated and include:

- Fridge/freezer
- Dishwasher
- Plate warming drawer to four and five bedroom apartments
- Oven
 - Combined microwave and oven provided in one bedroom apartments
 - Multi-function oven and separate combined microwave and oven in all other apartments
 - Four and five bedroom apartments have an additional steam oven and coffee machine
- Four-burner electric induction hob in one to three bedroom apartments with an electric five-burner hob in four and five bedroom apartments
- Extractor fan with integrated lighting
- Wine cooler in all apartments (by Capel in one and two bedroom apartments and by Gaggenau in three, four and five bedroom apartments)
- A combined washer dryer for one and two bedroom apartments with separate washing machine and tumble dryer for all other apartments by Bosch

Note: some variance occurs between apartments. Please refer to the sales team for individual apartment schedules for the kitchens.

REFINED BATHROOMS

General Bathrooms

All walls in the bathrooms are fully tiled with polished natural stone and complementary honed stone tiles to the floor. All brassware is polished stainless steel or chrome and generally by Vola. Mirror demisters and under floor heating are provided as standard. All WCs are of white enamel with a dual push flush button. Each bathroom is fitted with backlit mirrored cabinets and low level veneered cabinets. Shaver sockets are fitted as standard to all bathrooms and shower rooms.

Master Bathrooms

Natural Marble tiles to all walls.

Bathrooms are fitted with enamelled steel bathtub with integrated bath filler and chrome hand shower attachment by Vola; shower enclosure with ceiling mounted shower head, separate handheld attachment and body jets thermostatically controlled, generally by Vola; towel rail with a heated section of marble wall for towel and bathroom warming.

Bathrooms (with bath only)

Bathrooms are fitted with an enamelled steel bathtub with an integrated bath filler; ceiling mounted and handheld showers generally by Vola within the bath with a glass bath screen; towel rail with a heated section of marble wall for towel and bathroom warming.

Shower rooms (with shower only)

Shower rooms are fitted with a stone shower tray, a glass shower door and thermostatically controlled shower control. The ceiling mounted and handheld shower heads are generally by Vola.

Note: some variance occurs between apartments. Please refer to the sales team for individual apartment schedules for the bathrooms.

SUPERIOR COMFORT

Cooling and Heating

The comfort cooling is provided by a mechanical fan coil unit supplying cooled air to all principal rooms. The underfloor heating system provides heat throughout the apartment and is thermostatically controlled.²

The building is served by a development wide Combined Heat and Power Plant which provides metered hot water within the apartment.

Lighting

Energy efficient LED downlights are fitted in the living areas, hallways, kitchens and bedrooms. 5 amp sockets are fitted to living areas and all bedrooms. Integrated LED lighting is provided in the master bedroom wardrobes. A fully automated and addressable lighting control system is provided for each room.

Electrics

Living areas and bedrooms are fitted with a telephone point together with a TV outlet and are wired for satellite television and FM/DAB radio. The ceiling of the living area is pre-wired for installation of the purchaser's own speakers. Smoke detectors are fitted as standard.

Home Automation System

Apartments are fitted with a Home Automation System incorporating a central touch screen with separate local scene setting controls to principal rooms. The system is designed to control lighting, heating and cooling (where applicable) and interfaces with the door entry intercom, security access and panic alarm systems.

The Home Automation System has the provision to be upgraded (by and at the purchaser's own cost) to incorporate controls for an audio/visual system, window blind mechanism and remote wi-fi access.

TRANQUIL GARDENS

Private Gardens

Where applicable, all rear private gardens are laid to lawn, with a patio area of sandstone paving or timber decking. Front gardens are generally finished with planting.

Note: some variance occurs between apartments. Please refer to the sales team for individual garden schedules.

External

The ground level hard and soft landscaping has integrated planting and feature lighting which is designed by a specialist landscape architect.

Management and Security

Estate Managers are employed to provide a 24 hour concierge service as well as security patrols. A CCTV system with a centralised security monitoring facility provides cover for the whole estate.

SUPERIOR FACILITIES

Leisure and Spa Facilities

A fully equipped gymnasium and exercise area with indoor swimming pool is provided for residents' private use.³

Restaurant

Public assessed and signature restaurant and café are located within the Metropolitan Building, subject to lease.

Parking

Secure underground parking is located underneath the development and is available at an additional cost (subject to availability).

Notes:

1. Variances occur between apartment types. Please refer to the sales team for individual apartment schedules. Please note that all aspects of the design for the Water Gardens are constantly under review. CK Asset Holdings Limited reserves the right to alter the design and substitute any item within the specification for a similar or improved product.
2. The comfort cooling system is designed to provide an ambient temperature within the apartment for the majority of normal external temperatures. This may not be achieved in extreme temperature conditions.
3. Leisure facilities are to be developed in conjunction with the piazza and will be available upon completion of the Tower East.
4. The apartment specification is subject to change.



Chelsea Waterfront Sales Suite

90 Lots Road
London SW10
+44 (0)20 7352 8852


chelseawaterfront.com

A DEVELOPMENT BY



SALES AGENT



 Member of CK Asset Group 長江實業集團成員
+852 2128 7128

This brochure and the information contained in it does not form part of any contract, and while reasonable effort has been made to ensure accuracy, this cannot be guaranteed and no representation or warranty is made in that regard. Development and apartment designs and layouts are indicative only and may change. The specification of the apartments is the anticipated specification at the date this brochure was prepared, but may be subject to change in accordance with permitted variances under the apartment sale contracts. Dimensions shown in any text or plan are approximate sizes only and actual sizes may be different once constructed (although it is not anticipated that any apartments will be reduced by more than 5% in size). Computer Generated Images and photos are indicative only and may have been enhanced. Photos, images, drawings and perspectives contained in this brochure may not relate to the development and may not accurately reflect the completed development. All sales remain subject to contract. All information regarding prospective commercial or retail tenants represents current intention only and the final identity and/or nature of the tenants may change. The facilities and services (including, but not exclusively, the health club, restaurants, shops, etc) may not be available at the date of completion. Wall, ceiling and floor finishes, furniture and lighting shown in Computer Generated Images and photos are not included in sales and layouts may differ. Chelsea Waterfront and the building names are marketing names only and will not necessarily form part of the approved postal address and may change. Neither the agents nor any person in their employ has any authority to make or give any representation, warranty or guarantee (whether written or oral) in respect of or in relation to the development (or any parts thereof). We strongly recommend all parties visit and inspect the development site to understand its surrounding areas and environment.



