

PHASE 1
FLOORPLANS

THE **1840**
ST GEORGE'S GARDENS

CITY  COUNTRY

THE 1840, ST GEORGE'S GARDENS

*Luxurious 1, 2 and 3 bedroom
conversion apartments in the
heart of South West London*



CGI indicative only

EXPLORING THE 1840



SPRINGFIELD DRIVE

THE
CHAPEL

THE
BALLROOM

PHASE 1

ST GEORGE'S
GARDENS

SPRINGFIELD PARK

LAPIDGE DRIVE

HOMES OF DISTINCTION

A superior specification

Discover the superbly appointed and excellently crafted Grade II listed conversion apartments in the heart of South West London.

Materials and colours seamlessly combine modern city living with period grandeur. A sense of natural simplicity and informal luxury will be created throughout each apartment.

Walk into The 1840 and you will see that careful thought, together with superior build quality and finishes, create living spaces that not only function perfectly but look and feel spectacular.

STYLISH AND MODERN DESIGNED KITCHENS

As the heart of the home, kitchen and dining areas at The 1840 strike the perfect balance between cooking and dining.

- A mixture of oak and white German handle-less kitchen units with under plinth and LED flush under mount lighting
- Additional high level wall unit storage (where possible)
- White stone kitchen worktops and matching full height stone splash back
- Brushed stainless steel Blanco sink and tap
- Siemens built-in oven with microwave function
- Siemens integrated fridge/freezer (Energy Rated A+)
- Siemens integrated dishwasher (Energy Rated A+)
- Neff washer dryers installed into all utility cupboards* (Energy Rated A+)
- Caple wine cooler to most apartments
- Full stone wrap on island sides and stone worktops on island down stands, (where applicable)
- Island pop-up sockets (where applicable)
- LED under wall unit lighting
- Kitchen recycling bin provided

* Integrated Neff washer/dryer when part of kitchen in 1 and 2 bedroom apartments. 3 bedroom apartments have separate integrated washing machine and tumble dryer. In apartments with a separate utility room Neff washer/dryer in 1 and 2 bedroom apartments and Neff separate washing machine and tumble dryer in 3 bedroom apartments.



ELEGANT BATHROOMS

Finished to impeccable standards, bathrooms are elegant and indulgent in equal measure.

- Sanitaryware from Villeroy & Boch
- Brassware to master en-suite or main bathroom from Hanssgrohe in chrome finish
- Apartments with a second bathroom will benefit from Crosswater brassware in brushed brass
- Underfloor heating and full height tiling to all bathrooms
- Triple door, LED, demisting recessed vanity cabinets to master en-suite or main bathroom



CGI indicative only

6



CGI indicative only

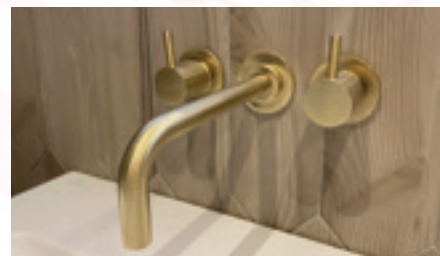
7

HEATING, ELECTRICAL & LIGHTING

- Philips Hue smart light bulbs throughout each apartment, with the exception of bathrooms
- Electric panel radiators with individual thermostatic control and timer
- Centralised mechanical extract ventilation to kitchen, bathroom, en-suite(s) and utility cupboards
- Chrome finished switches, white finish to sockets
- Chrome shaver sockets provided to bathroom and en-suite(s)
- USB sockets to principal bedroom
- Pendant lighting in living/dining area
- Spot lights in the kitchen

INTERIOR FINISHES

- Traditional skirting and architrave to all homes
- Walls, skirting and architrave painted in Dulux Heritage Indian White
- Flush flat panel doors painted in Dulux Heritage Mudlark with brushed chrome ironmongery
- Fitted wardrobes to master bedrooms and dressing areas boast a full carcass, which features a lights shelf, hanging rails and drawers
- Amtico flooring in Herringbone lay to kitchen/living/dining area
- Amtico flooring will be laid plank to hall and utility room
- Tiled floors to bathrooms, en-suite(s)
- 100% pure wool fitted carpets to all bedrooms and stairs
- Underfloor heating in bathrooms and kitchen/living/dining areas



HOME ENTERTAINMENT & COMMUNICATIONS

- BT broadband and telephone to all units
- Grain broadband, TV and Sky cabling to all units Sky taken to main TV point in living area
- Main living areas have sockets and switches for TV with conduit to allow wall fitting
- All bedrooms have high level TV points
- Cat 6 network to all habitable rooms taken back to incoming internet position
- Danfoss Icon system electronic thermostat with touch user interface and wireless capability to connect with a mobile phone, designed to optimise the heating of your home whilst conserving energy consumption

COMMUNAL AREAS

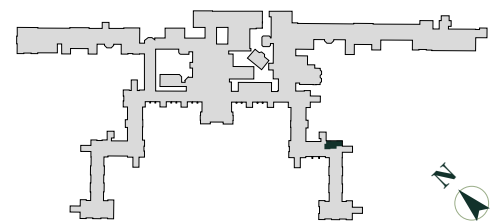
- Exclusive landscaped areas
- Garden kitchen and work hub for residents use only
- Post boxes fitted to individual apartment front door
- Beautiful entrance atrium and concierge
- All homes and communal areas feature mains operated smoke and heat detectors
- Allocated secure parking
- Electric car charging points
- Secure cycle storage
- Enclosed refuse storage
- External lighting

SECURITY & PEACE OF MIND

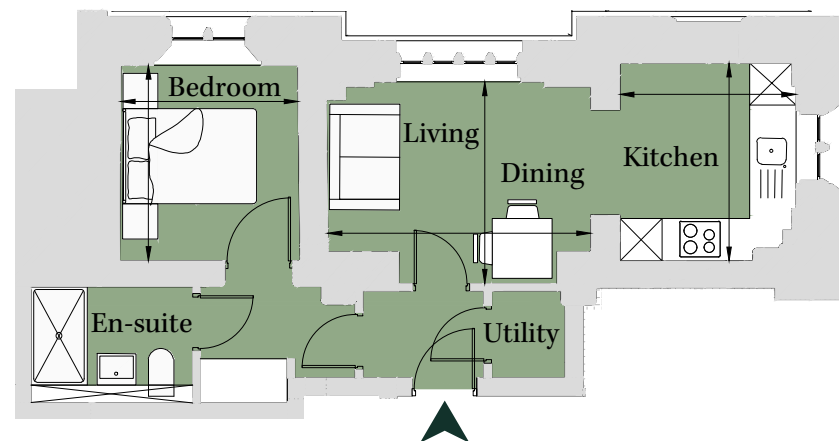
- High security apartment entrance door with multi-locking system
- Door entry system at Main Building entrance dials direct to residents' nominated mobile
- Mains fed smoke detector with battery pack back up fitted to hall
- SimpliSafe home security system with the ability to link to Alexa and Google installed in every home
- 10-year Warranty

PLOT LU06 1 Bedroom Apartment

Ground Floor		
Total area 416 sq ft (38.6 sq m)		
Kitchen	9' 3" x 8' 2"	(2.81m x 2.49m)
Living/Dining	9' 5" x 12' 3"	(2.86m x 3.73m)
Bedroom	9' 1" x 8' 3"	(2.77m x 2.52m)

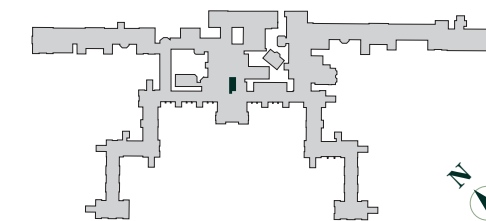


Site Location Plan

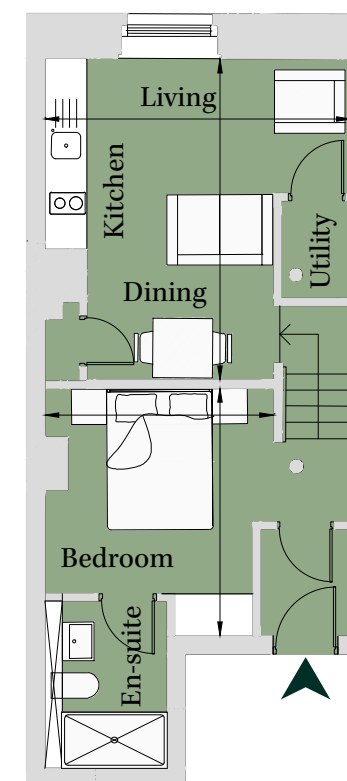


PLOT CC10 1 Bedroom Apartment

First Floor		
Total area 419 sq ft (38.9 sq m)		
Kitchen/Living /Dining	15' x 14' 3"	(4.56m x 4.34m)
Bedroom	11' 7" x 10' 8"	(3.52m x 3.25m)



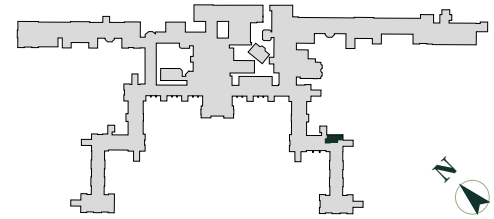
Site Location Plan



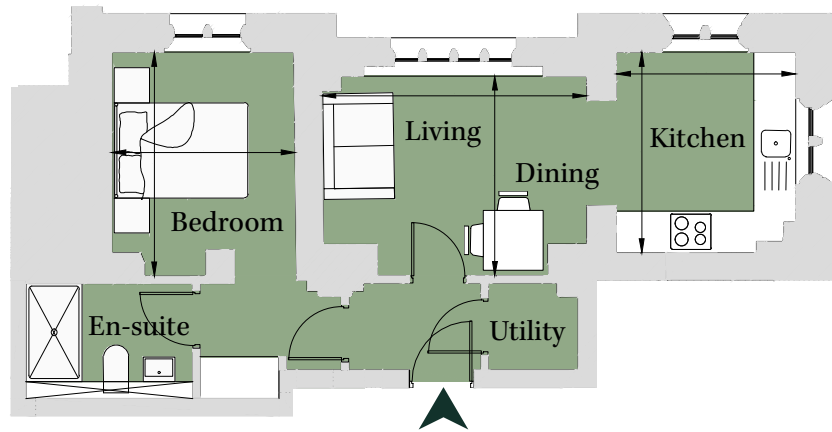
PLOT LU09
1 Bedroom Apartment

First Floor
Total area 431 sq ft (40.1 sq m)

Kitchen	9' 4" x 8' 5"	(2.85m x 2.55m)
Living/Dining	9' 4" x 12' 5"	(2.83m x 3.76m)
Bedroom	10' 5" x 8' 7"	(3.18m x 2.60m)



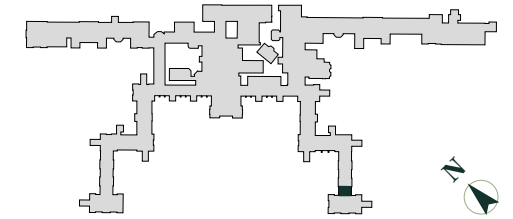
Site Location Plan



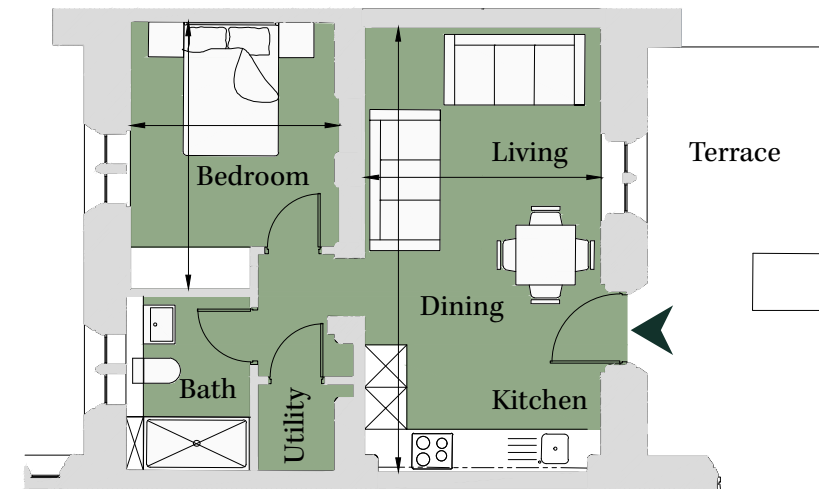
PLOT JA04
1 Bedroom Apartment

Lower Ground
Total area 458 sq ft (42.5 sq m)

Living/Dining /Kitchen	20' 9" x 11' 1"	(6.31m x 3.36m)
Bedroom	12' 6" x 9' 9"	(3.79m x 2.96m)

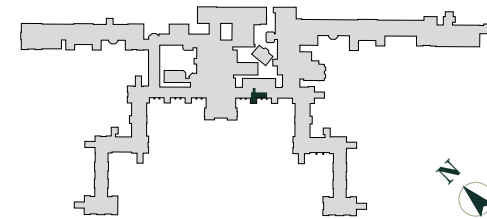


Site Location Plan

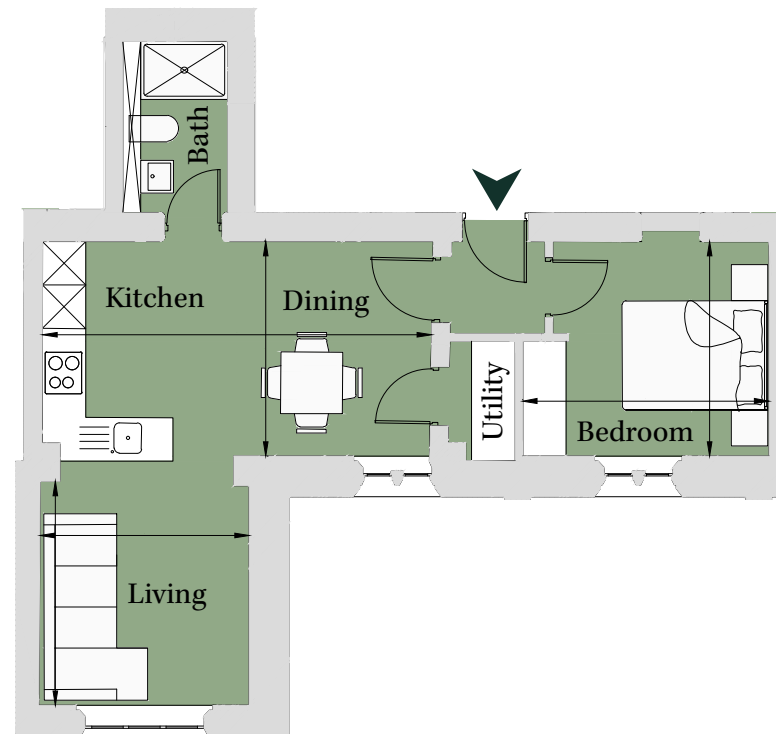


PLOT CE05
1 Bedroom Apartment

Ground Floor		
Total area 467 sq ft (43.4 sq m)		
Kitchen/Dining	9' 9" x 17' 7"	(2.96m x 5.35m)
Living	10' 2" x 9' 5"	(3.08m x 2.87m)
Bedroom	9' 9" x 11' 2"	(2.95m x 3.39m)

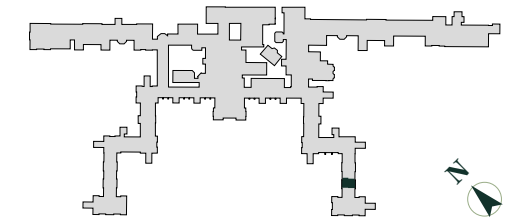


Site Location Plan

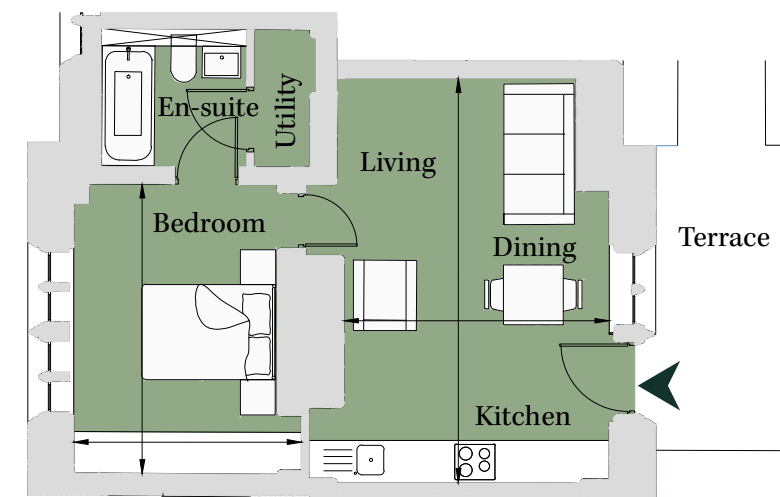


PLOT JA01
1 Bedroom Apartment

Lower Ground		
Total area 474 sq ft (44.1 sq m)		
Living/Dining /Kitchen	18' 11" x 12' 4"	(5.75m x 3.76m)
Bedroom	13' 6" x 10' 7"	(4.11m x 3.23m)

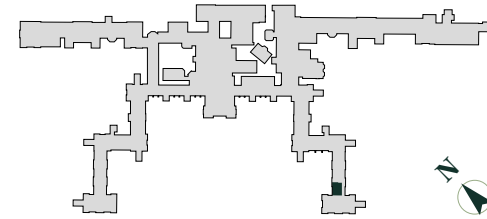


Site Location Plan

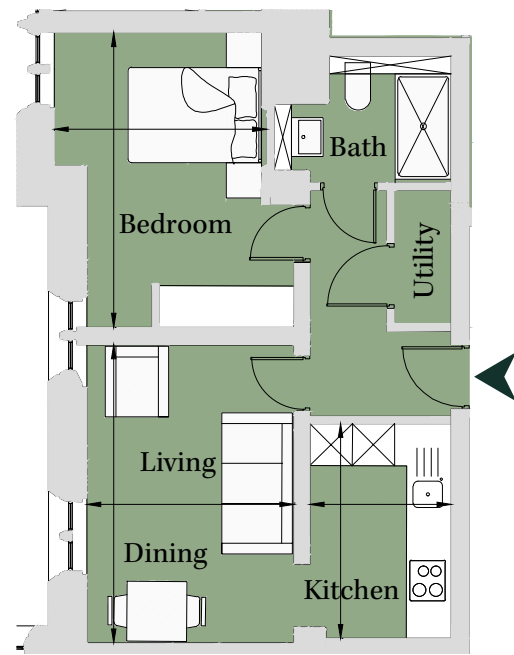


PLOT JA11
1 Bedroom Apartment

First Floor		
Total area 481 sq ft (44.7 sq m)		
Living/Dining	13' 11" x 9' 8"	(4.23m x 2.94m)
Kitchen	10' x 6' 7"	(3.05m x 2.00m)
Bedroom	13' 9" x 9' 11"	(4.18m x 3.01m)

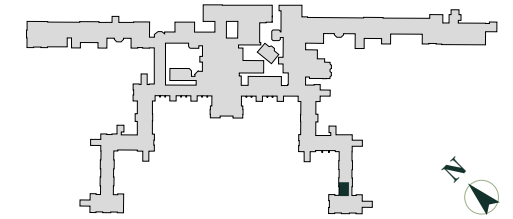


Site Location Plan

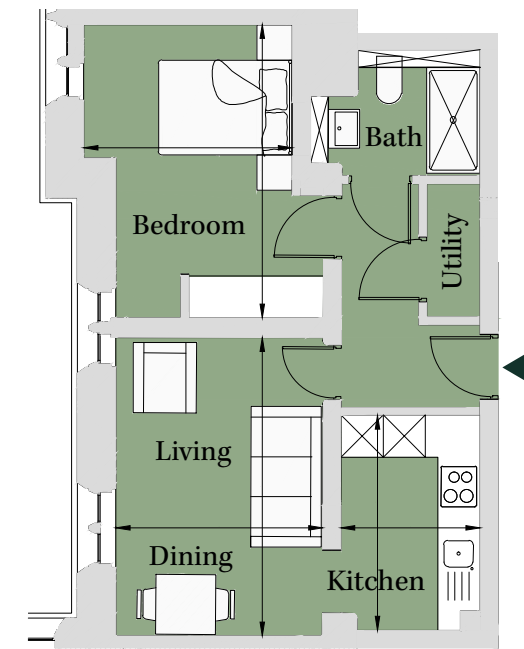


PLOT JA07
1 Bedroom Apartment

Ground Floor		
Total area 481 sq ft (44.7 sq m)		
Living/Dining	13' 11" x 9' 8"	(4.24m x 2.93m)
Kitchen	10' 1" x 6' 6"	(3.06m x 1.98m)
Bedroom	13' 8" x 9' 9"	(4.17m x 2.96m)

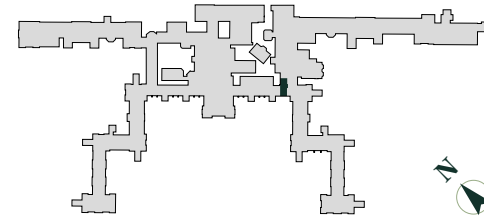


Site Location Plan

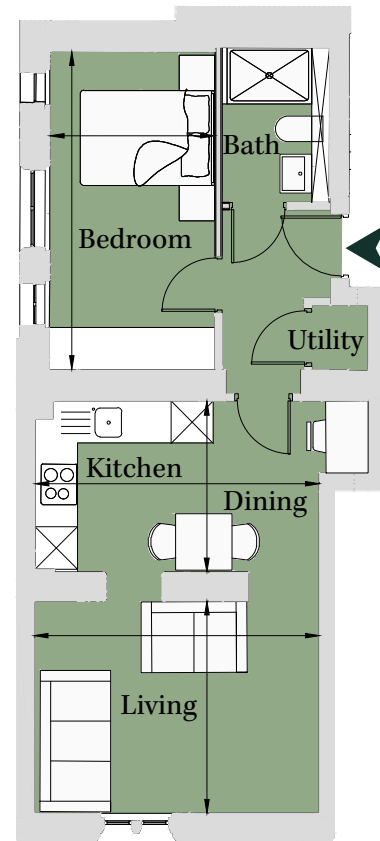


PLOT PR04 1 Bedroom Apartment

		First Floor
		Total area 482 sq ft (44.8 sq m)
Living	9' 11" x 13' 3"	(3.00m x 4.04m)
Dining/Kitchen	7' 11" x 13' 3"	(2.42m x 4.03m)
Bedroom	14' 10" x 7' 8"	(4.51m x 2.34m)

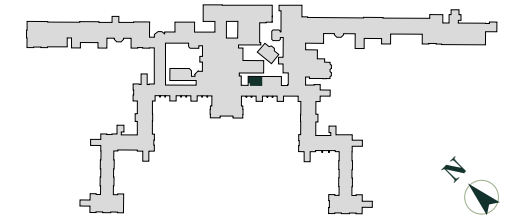


Site Location Plan

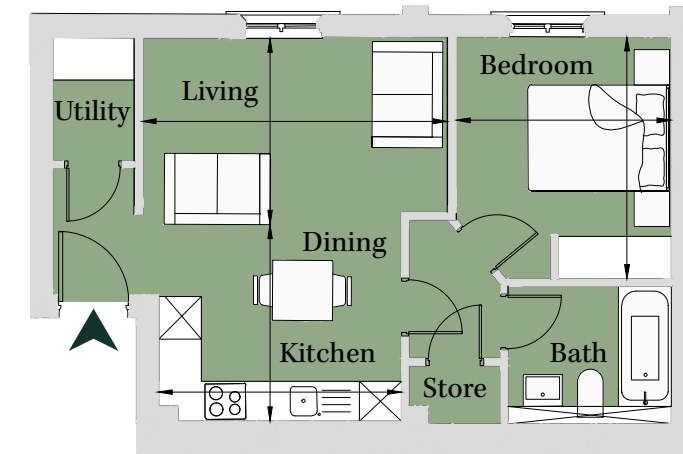


PLOT CE02 1 Bedroom Apartment

		Ground Floor
		Total area 484 sq ft (44.9 sq m)
Kitchen/Dining	9' 1" x 11' 4"	(2.77m x 3.44m)
Living	8' 8" x 14' 2"	(2.63m x 4.31m)
Bedroom	11' 3" x 10'	(3.42m x 3.03m)

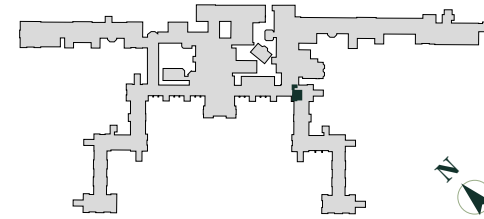


Site Location Plan

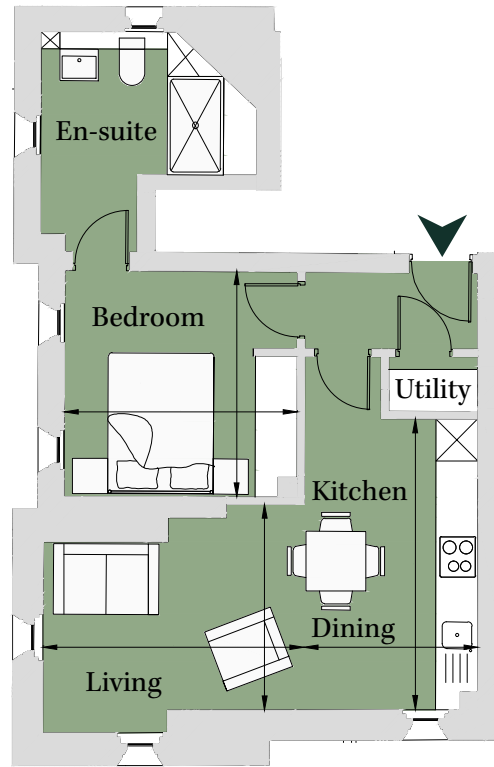


PLOT PR07
1 Bedroom Apartment

Second Floor		
Total area 487 sq ft (45.3 sq m)		
Living	9' 7" x 12' 2"	(2.92m x 3.71m)
Dining/Kitchen	13' 7" x 8' 2"	(4.13m x 2.47m)
Bedroom	10' 7" x 10' 11"	(3.21m x 3.31m)

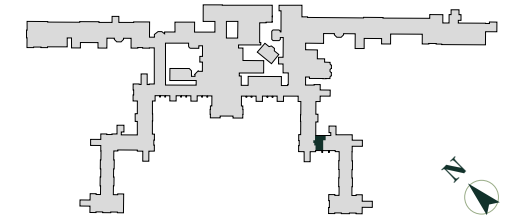


Site Location Plan

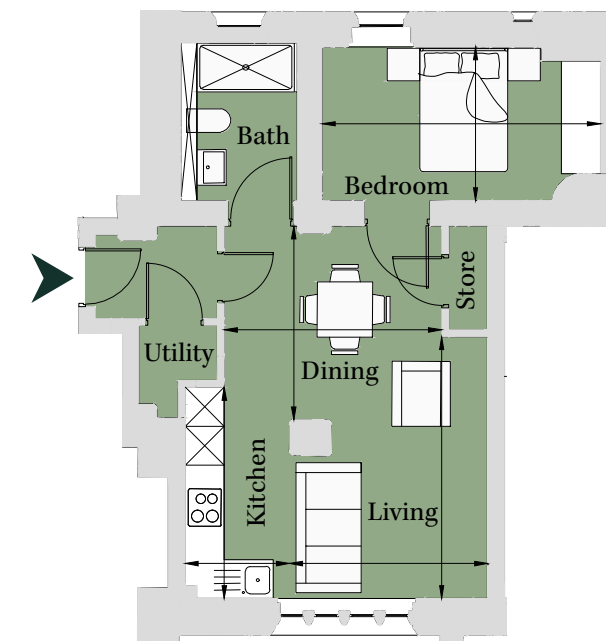


PLOT RO03
1 Bedroom Apartment

Ground Floor		
Total area 498 sq ft (46.3 sq m)		
Kitchen	5' 3" x 10' 8"	(1.60m x 3.25m)
Living	10' x 13' 3"	(3.05m x 4.03m)
Dining	11' x 9' 9"	(3.34m x 2.98m)
Bedroom	14' 1" x 7' 9"	(4.28m x 2.37m)

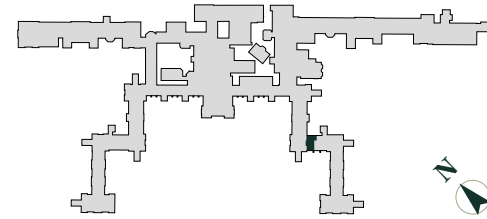


Site Location Plan

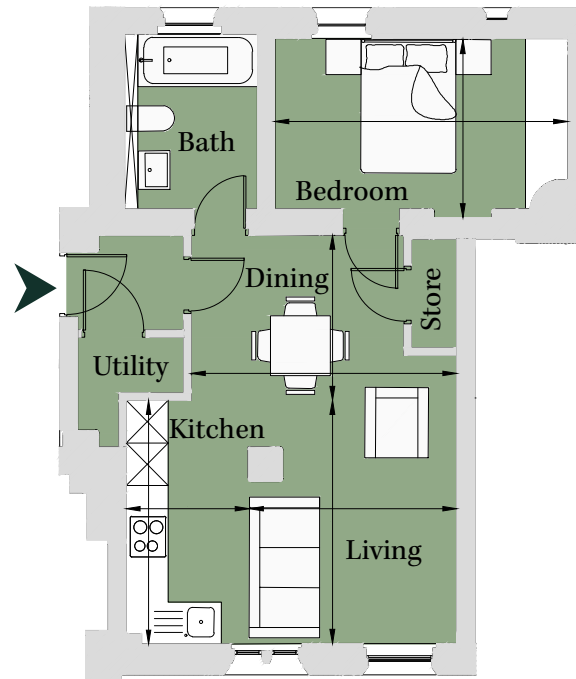


PLOT RO06 1 Bedroom Apartment

First Floor		
Total area 498 sq ft (46.3 sq m)		
Kitchen	5' 9" x 11' 5"	(1.75m x 3.47m)
Living	9' 8" x 11' 4"	(2.95m x 3.47m)
Dining	7' 8" x 12' 5"	(2.34m x 3.77m)
Bedroom	8' 4" x 13' 8"	(2.53m x 4.16m)

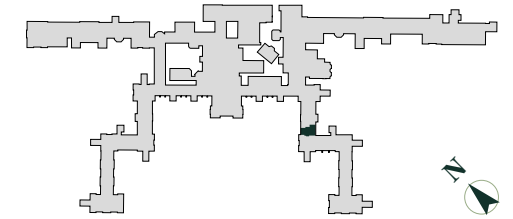


Site Location Plan

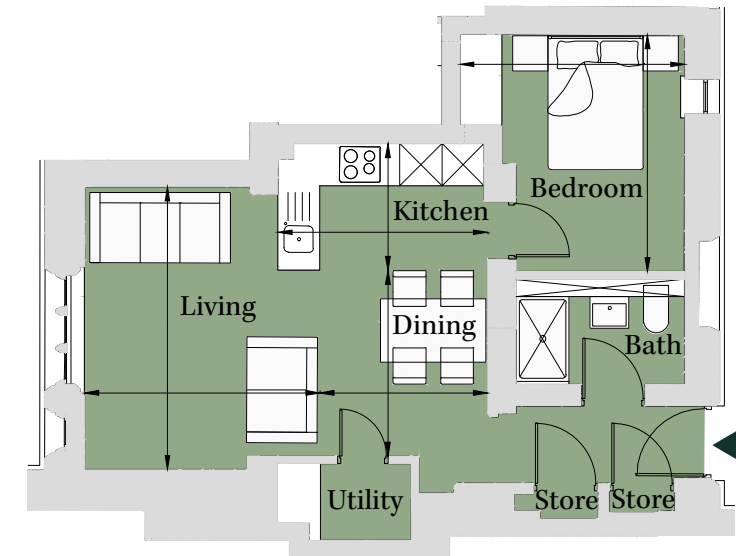


PLOT RO01 1 Bedroom Apartment

Ground Floor		
Total area 507 sq ft (47.1 sq m)		
Living	13' 2" x 11'	(4.01m x 3.34m)
Dining	8' 8" x 7' 10"	(2.63m x 2.38m)
Kitchen	5' 11" x 9' 9"	(1.80m x 2.98m)
Bedroom	11' 1" x 10' 6"	(3.36m x 3.19m)



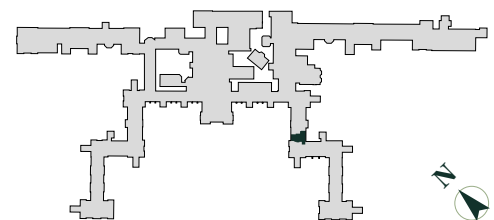
Site Location Plan



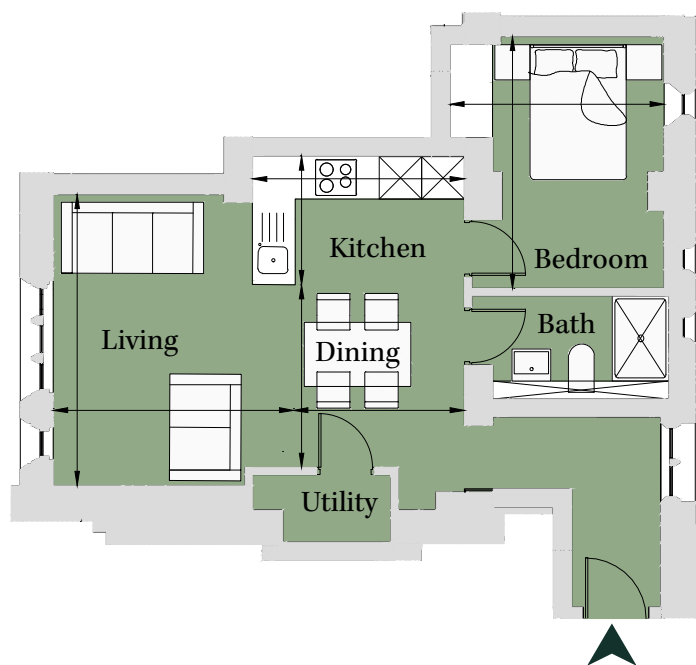
PLOT RO05

1 Bedroom Apartment

	First Floor	
	Total area 509 sq ft (47.3 sq m)	
Kitchen	9' 9" x 5' 11"	(2.98m x 1.81m)
Dining	7' 11" x 8' 5"	(2.40m x 2.57m)
Living	11' 1" x 13' 5"	(3.38m x 4.09m)
Bedroom	11' 8" x 9' 11"	(3.54m x 3.01m)



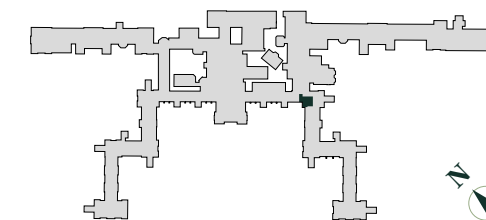
Site Location Plan



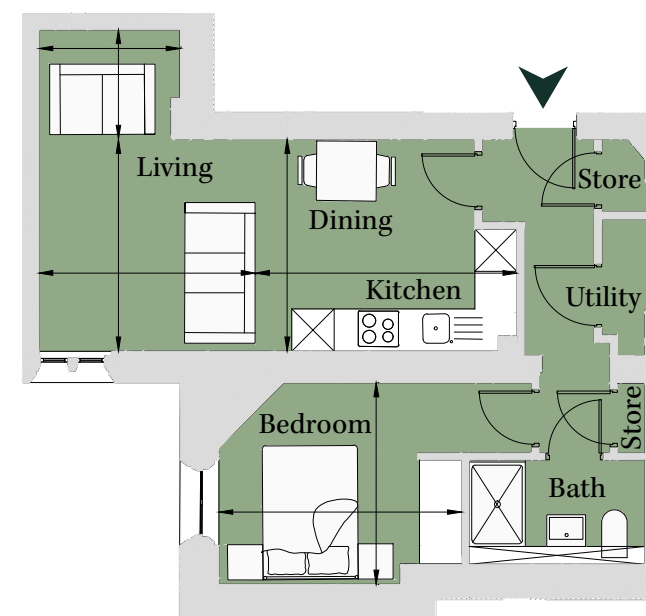
PLOT PR05

1 Bedroom Apartment

	First Floor	
	Total area 520 sq ft (48.3 sq m)	
Living	9' 11" x 10' 1"	(3.01m x 3.07m)
	5' 1" x 6' 7"	(1.55 x 2.01m)
Dining/Kitchen	9' 11" x 12' 3"	(3.01m x 3.71m)
Bedroom	9' 5" x 11' 4"	(2.86m x 3.45m)



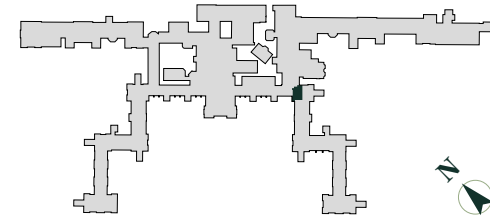
Site Location Plan



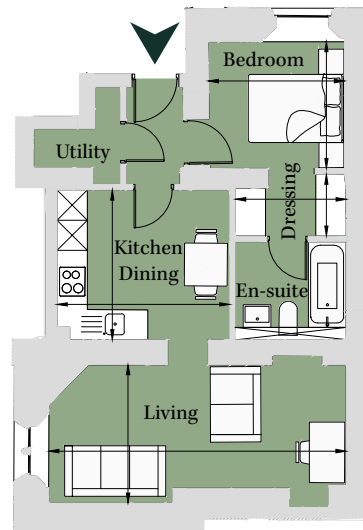
PLOT PR02
1 Bedroom Apartment

Ground Floor
Total area 536 sq ft (49.8 sq m)

Living/Dining	9' x 19' 4"	(2.74m x 5.89m)
Kitchen	9' 9" x 11' 3"	(2.97m x 3.42m)
Bedroom	8' 3" x 8' 10"	(2.51m x 2.69m)
Dressing	7' 3" x 4' 1"	(2.20m x 1.24m)



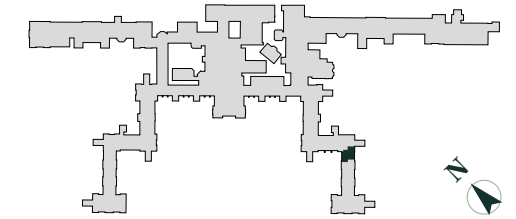
Site Location Plan



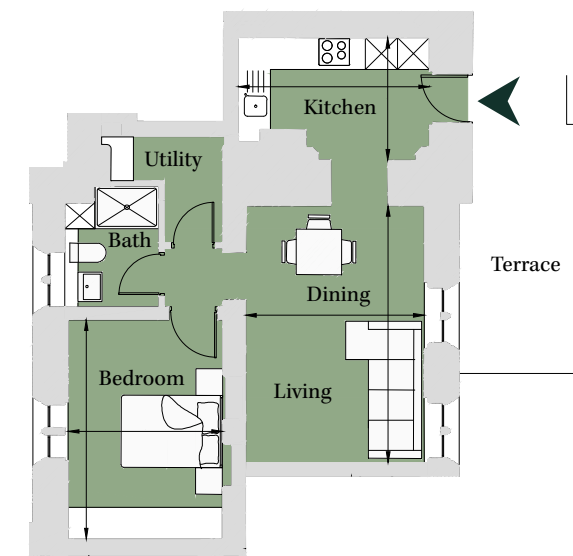
PLOT LU03
1 Bedroom Apartment

Lower Ground
Total area 550 sq ft (51.1 sq m)

Living/Dining	15' 10" x 11'	(4.81m x 3.34m)
Kitchen	7' 6" x 11' 9"	(2.29m x 3.58m)
Bedroom	13' 6" x 9' 6"	(4.10m x 2.89m)

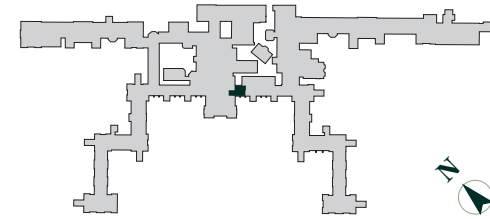


Site Location Plan

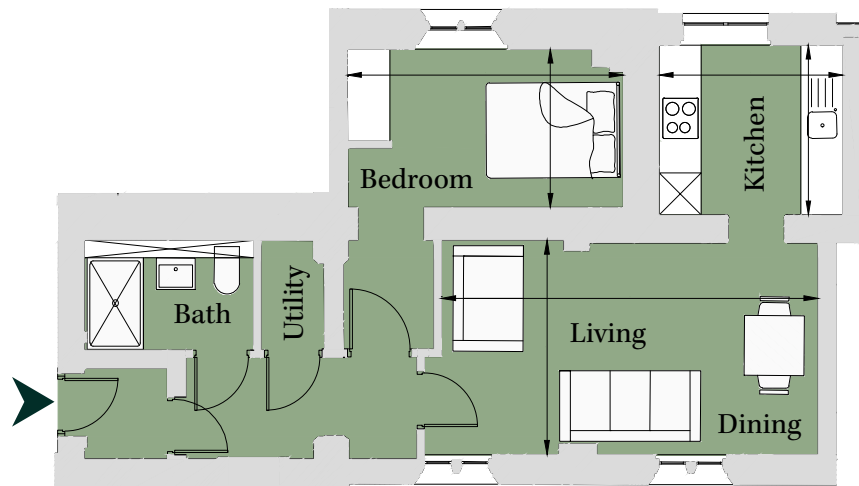


PLOT CC12
1 Bedroom Apartment

First Floor		
Total area 551 sq ft (51.2 sq m)		
Living/Dining	10' x 17' 7"	(3.04m x 5.35m)
Kitchen	7' 11" x 8' 7"	(2.41m x 2.61m)
Bedroom	7' 5" x 12' 11"	(2.24m x 3.92m)

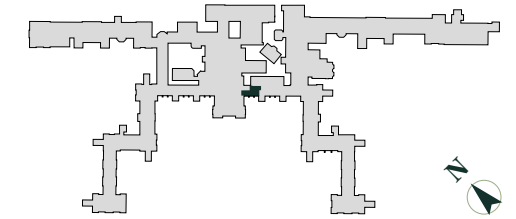


Site Location Plan

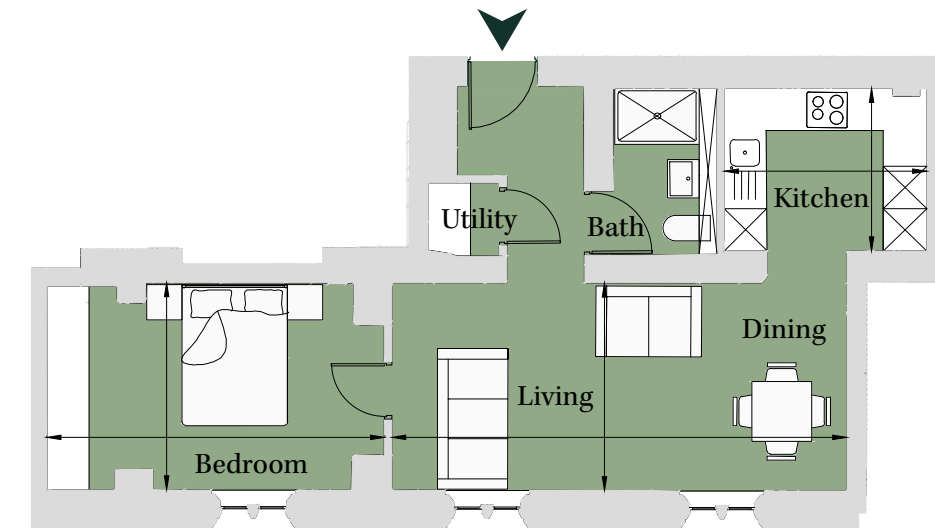


PLOT CE01
1 Bedroom Apartment

Ground Floor		
Total area 562 sq ft (52.2 sq m)		
Kitchen	7' 7" x 9' 5"	(2.31m x 2.87m)
Living/Dining	9' 8" x 21' 3"	(2.94m x 6.46m)
Bedroom	9' 8" x 15' 9"	(2.94m x 4.79m)



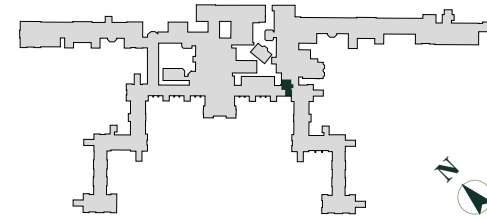
Site Location Plan



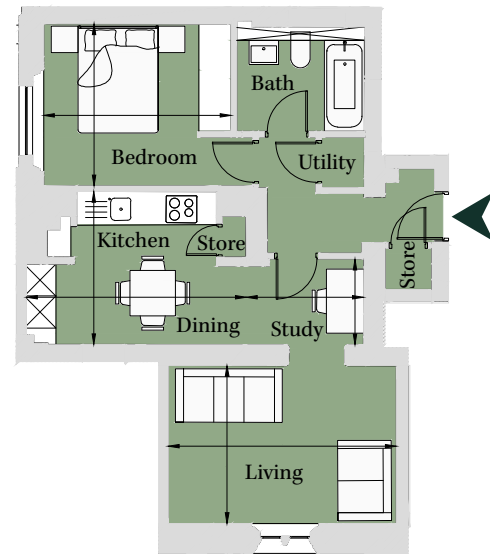
PLOT PR01
1 Bedroom Apartment

Ground Floor
Total area 572 sq ft (53.2 sq m)

Living	9' 8" x 14'	(2.95m x 4.26m)
Dining/Kitchen	9' 5" x 13' 6"	(2.86m x 4.11m)
Study	7' 2" x 5' 3"	(2.20m x 1.61m)
Bedroom	9' 11" x 11' 6"	(3.03m x 3.50m)



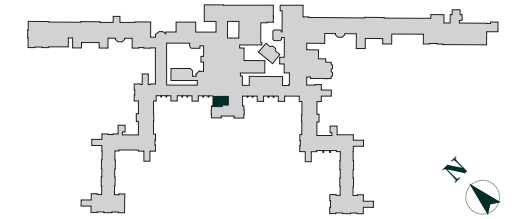
Site Location Plan



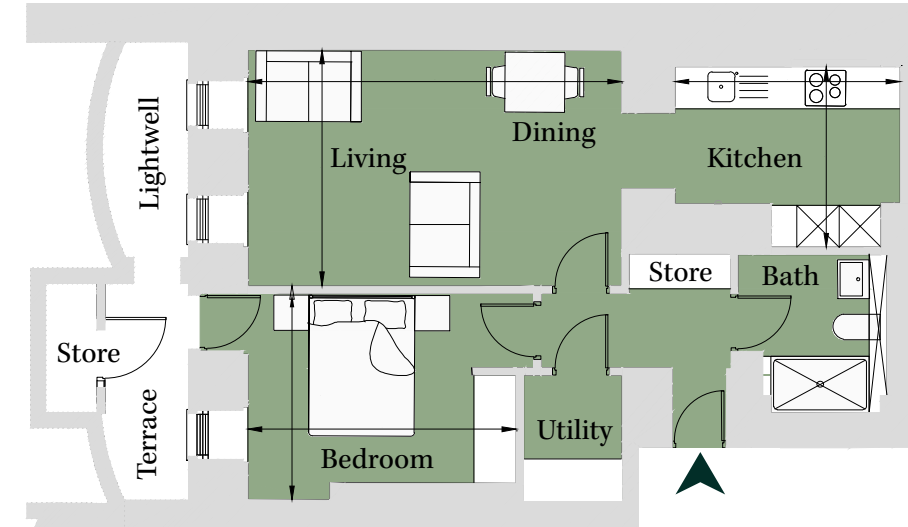
PLOT CC03
1 Bedroom Apartment

Lower Ground
Total area 575 sq ft (53.5 sq m)

Living/Dining	11' x 17' 5"	(3.35m x 5.31m)
Kitchen	8' 5" x 10' 6"	(2.56m x 3.20m)
Bedroom	9' 7" x 12' 6"	(2.92m x 3.81m)



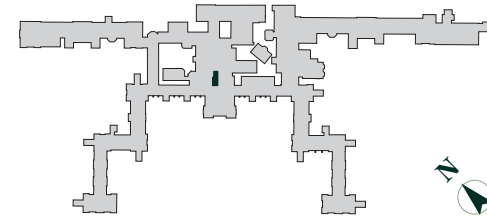
Site Location Plan



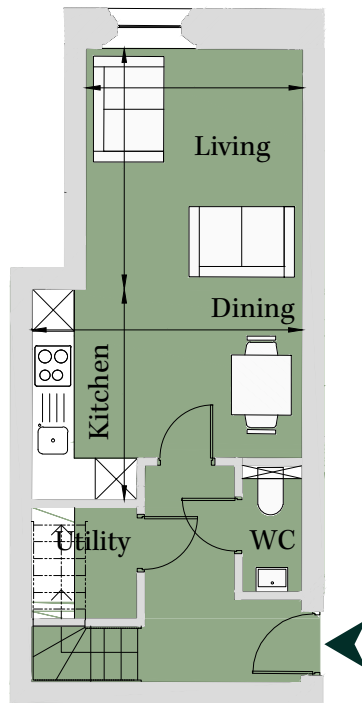
PLOT CC16
1 Bedroom Apartment

Second/Third Floor
Total area 576 sq ft (53.5 sq m)

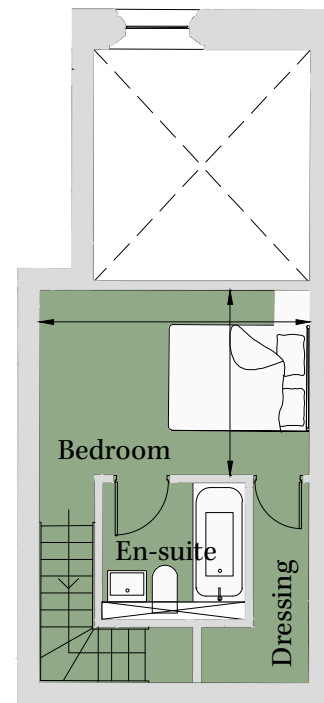
Living	11' 3" x 10' 2"	(3.42m x 3.08m)
Dining/Kitchen	9' 10" x 12' 7"	(2.99m x 3.84m)
Bedroom	8' 8" x 12' 7"	(2.63m x 3.84m)



Site Location Plan



Second Floor

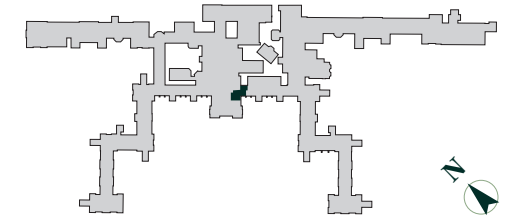


Third Floor

PLOT CC19
1 Bedroom Apartment

Second Floor
Total area 579 sq ft (53.8 sq m)

Living	9' 11" x 16' 9"	(3.02m x 5.10m)
Dining/Kitchen	7' 2" x 12' 8"	(2.17m x 3.86m)
Bedroom	9' 3" x 12' 10"	(2.81m x 3.91m)



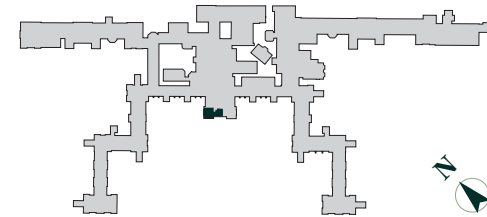
Site Location Plan



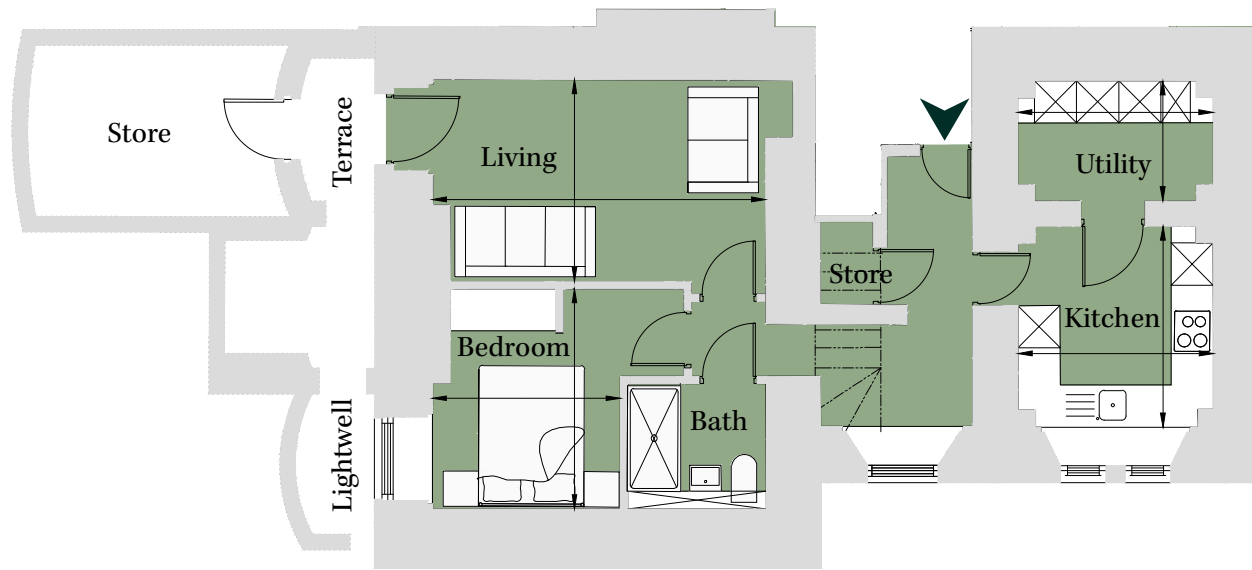
PLOT CC02 1 Bedroom Apartment

Lower Ground
Total area 583 sq ft (54.2 sq m)

Living	9' 5" x 15' 7"	(2.87m x 4.73m)
Kitchen	9' 5" x 9' 1"	(2.85m x 2.77m)
Bedroom	10' 8" x 10' 1"	(3.12m x 2.67m)
Utility	9' 2" x 5' 8"	(2.79m x 1.71m)



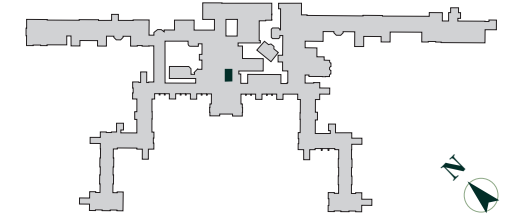
Site Location Plan



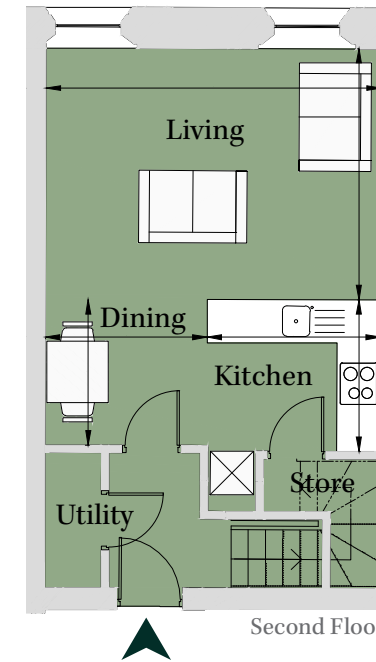
PLOT CCI7 1 Bedroom Apartment

Second/Third Floor
Total area 596 sq ft (55.4 sq m)

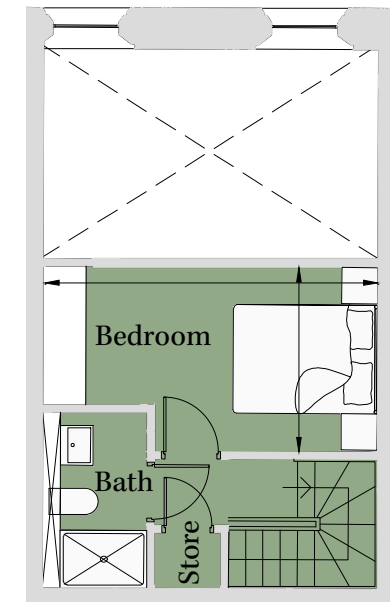
Kitchen	7' 11" x 6' 11"	(2.40m x 2.10m)
Living	15' 3" x 11' 5"	(4.64m x 3.48m)
Dining	7' 4" x 6' 7"	(2.24m x 2.02m)
Bedroom	8' 5" x 15' 2"	(2.55m x 4.61m)



Site Location Plan



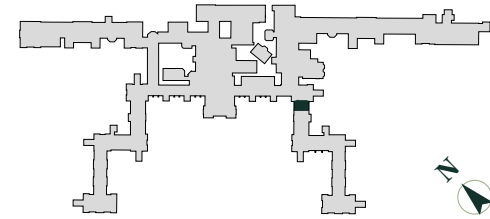
Second Floor



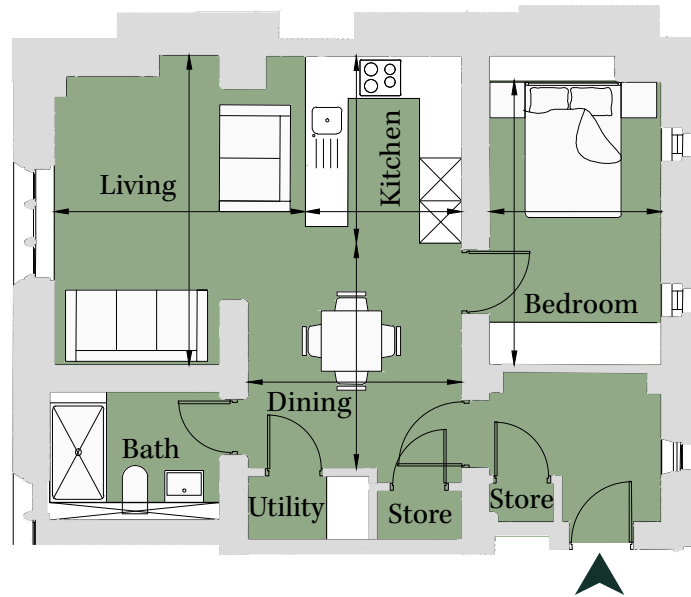
Third Floor

PLOT PW01
1 Bedroom Apartment

Ground Floor		
Total area 605 sq ft (56.2 sq m)		
Living	14' 4" x 11' 7"	(4.36m x 3.53m)
Dining	10' 5" x 9' 11"	(3.17m x 3.01m)
Kitchen	8' 8" x 7' 3"	(2.63m x 2.20m)
Bedroom	13' 1" x 7' 11"	(4.00m x 2.41m)

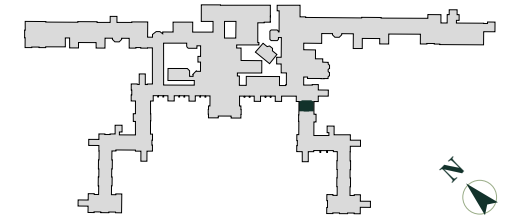


Site Location Plan

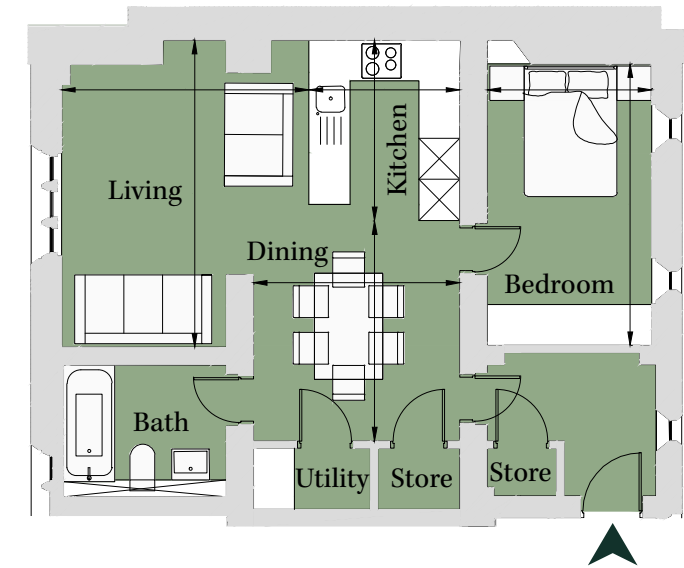


PLOT PW03
1 Bedroom Apartment

First Floor		
Total area 611 sq ft (56.8 sq m)		
Living	14' 9" x 11' 10"	(4.48m x 3.60m)
Dining	10' 7" x 9' 11"	(3.21m x 3.01m)
Kitchen	8' 8" x 7' 3"	(2.63m x 2.20m)
Bedroom	13' 6" x 7' 11"	(4.11m x 2.40m)

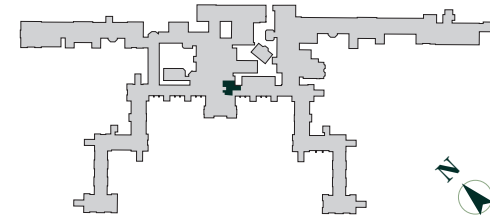


Site Location Plan

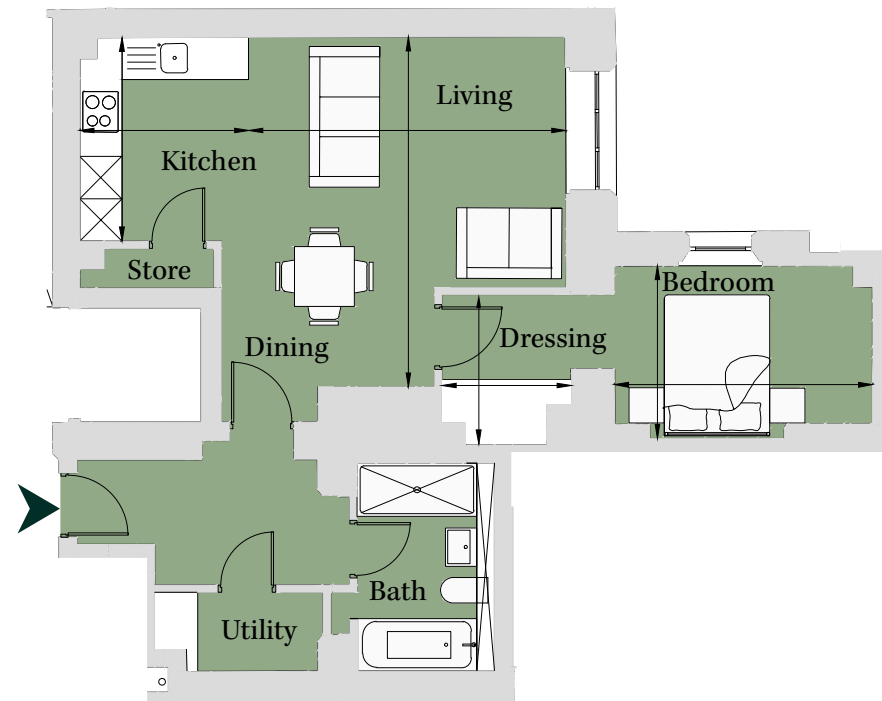


PLOT CC06
1 Bedroom Apartment

Ground Floor		
Total area 674 sq ft (62.6 sq m)		
Kitchen	7' 11" x 9' 6"	(2.40m x 2.89m)
Living/Dining	14' 9" x 16' 4"	(4.50m x 4.97m)
Bedroom	8' 1" x 12' 1"	(2.45m x 3.67m)
Dressing	6' x 7'	(1.84m x 2.14m)

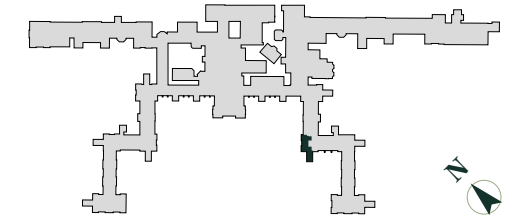


Site Location Plan

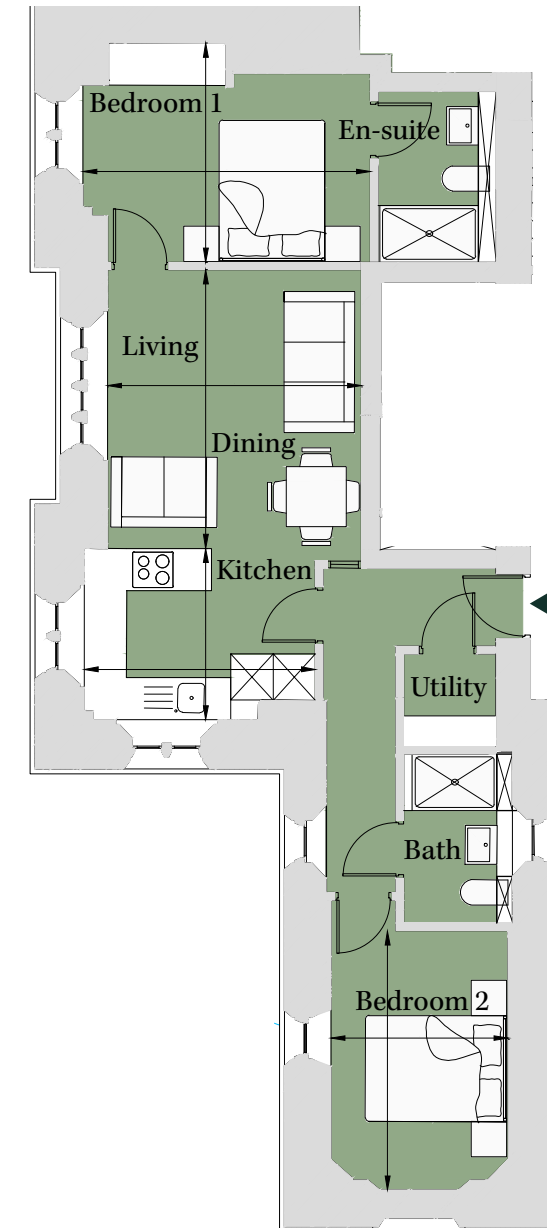


PLOT RO02
2 Bedroom Apartment

Ground Floor		
Total area 652 sq ft (60.6 sq m)		
Living/Dining	13' x 11' 10"	(3.95m x 3.60m)
Kitchen	8' x 10' 9"	(2.42m x 3.27m)
Bedroom 1	13' 5" x 10' 2"	(4.08m x 3.11m)
Bedroom 2	8' 3" x 12' 1"	(2.51m x 3.68m)



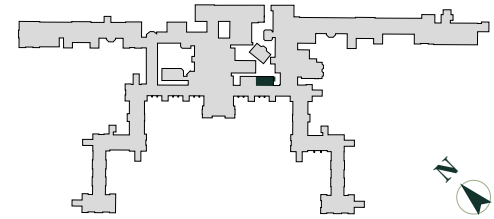
Site Location Plan



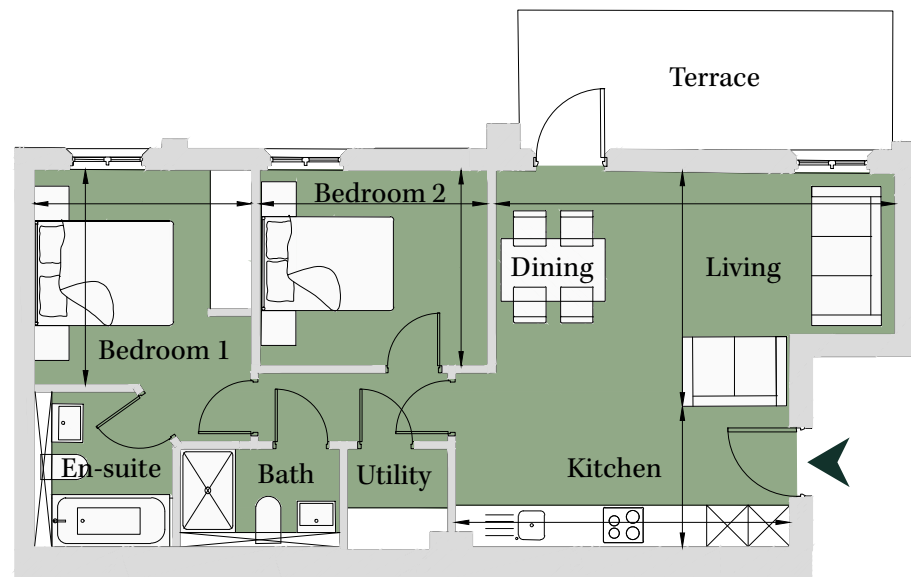
PLOT CE03
2 Bedroom Apartment

Ground Floor
Total area 670 sq ft (62.3 sq m)

Kitchen	6' 8" x 15' 10"	(2.02m x 4.81m)
Living/Dining	11' 1" x 18' 11"	(3.37m x 5.75m)
Bedroom 1	10' 2" x 10' 3"	(3.09m x 3.12m)
Bedroom 2	9' 3" x 10' 9"	(2.80m x 3.26m)



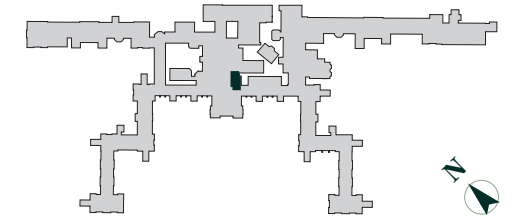
Site Location Plan



PLOT CC11
2 Bedroom Apartment

First Floor
Total area 672 sq ft (62.4 sq m)

Living	7' 10" x 12' 2"	(2.37m x 3.70m)
Dining/Kitchen	9' 3" x 16' 9"	(2.80m x 5.10m)
Bedroom 1	10' 5" x 8' 8"	(3.16m x 2.64m)
	5' 6" x 4' 3"	(1.68m x 1.30m)
Bedroom 2	8' 10" x 11' 9"	(2.69m x 3.58m)



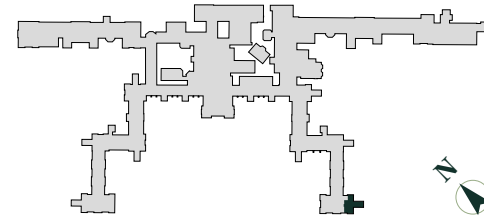
Site Location Plan



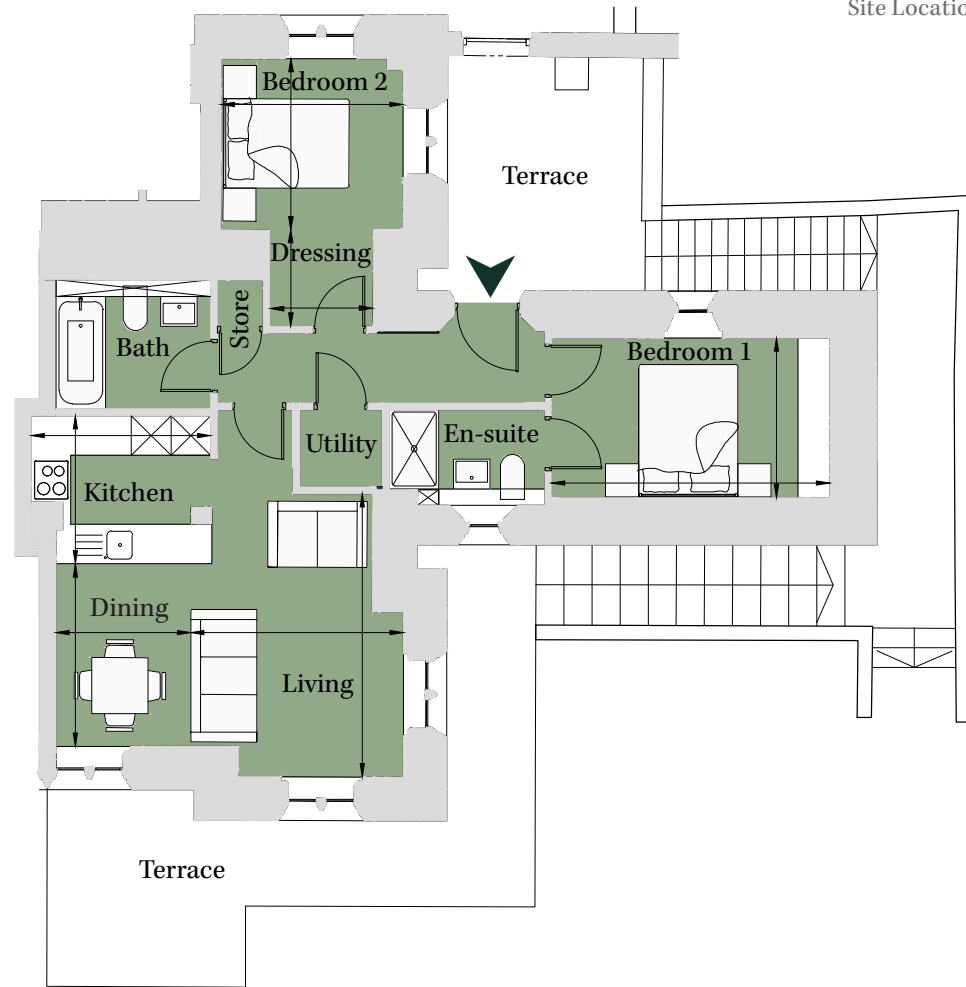
PLOT JA02 2 Bedroom Apartment

Lower Ground
Total area 673 sq ft (62.5 sq m)

Kitchen	8' 11" x 7' 4"	(2.71m x 2.24m)
Living	10' 6" x 14' 1"	(3.21m x 4.28m)
Dining	6' 8" x 9' 1"	(2.04m x 2.76m)
Bedroom 1	7' 11" x 13' 10"	(2.41m x 4.20m)
Bedroom 2	9' x 8' 6"	(2.75m x 2.59m)
Dressing	5' 2" x 4' 9"	(1.57m x 1.46m)



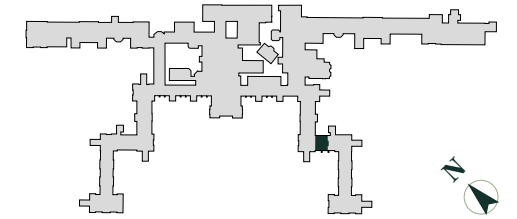
Site Location Plan



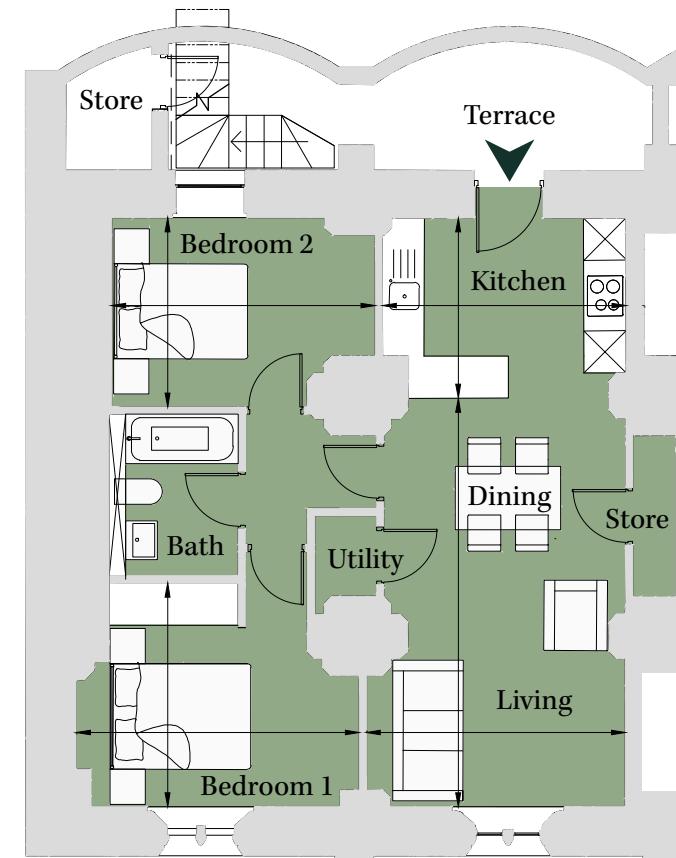
PLOT LU01 2 Bedroom Apartment

Lower Ground
Total area 688 sq ft (63.9 sq m)

Living/Dining	19' 1" x 12' 1"	(5.80m x 3.68m)
Kitchen	8' 5" x 11' 5"	(2.56m x 3.46m)
Bedroom 1	10' 5" x 13' 2"	(3.18m x 4.02m)
Bedroom 2	8' 10" x 12' 4"	(2.69m x 3.74m)



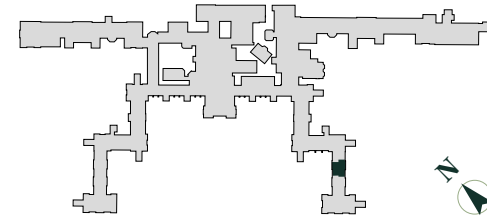
Site Location Plan



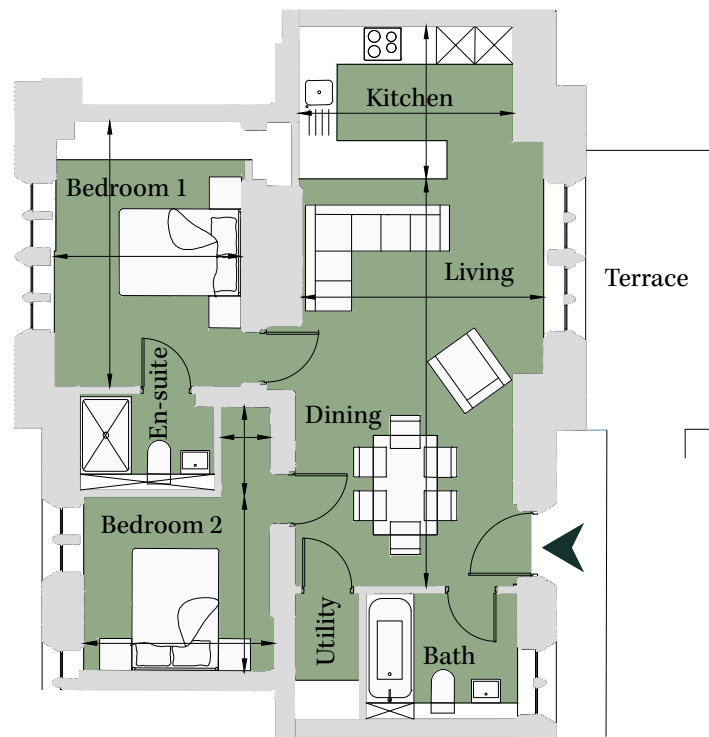
PLOT LU04
2 Bedroom Apartment

Lower Ground
Total area 740 sq ft (68.8 sq m)

Living/Dining	20' 10" x 12' 4"	(6.34m x 3.76m)
Kitchen	7' 10" x 11'	(2.38m x 3.34m)
Bedroom 1	13' 7" x 9' 7"	(4.13m x 2.91m)
Bedroom 2	9' x 9' 9"	(2.72m x 2.96m)
	4' 7" x 2' 6"	(1.40m x 0.76m)



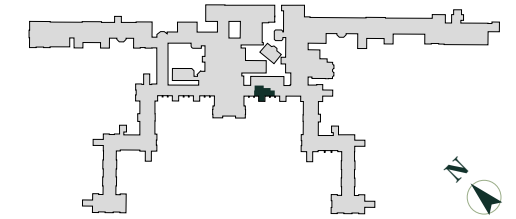
Site Location Plan



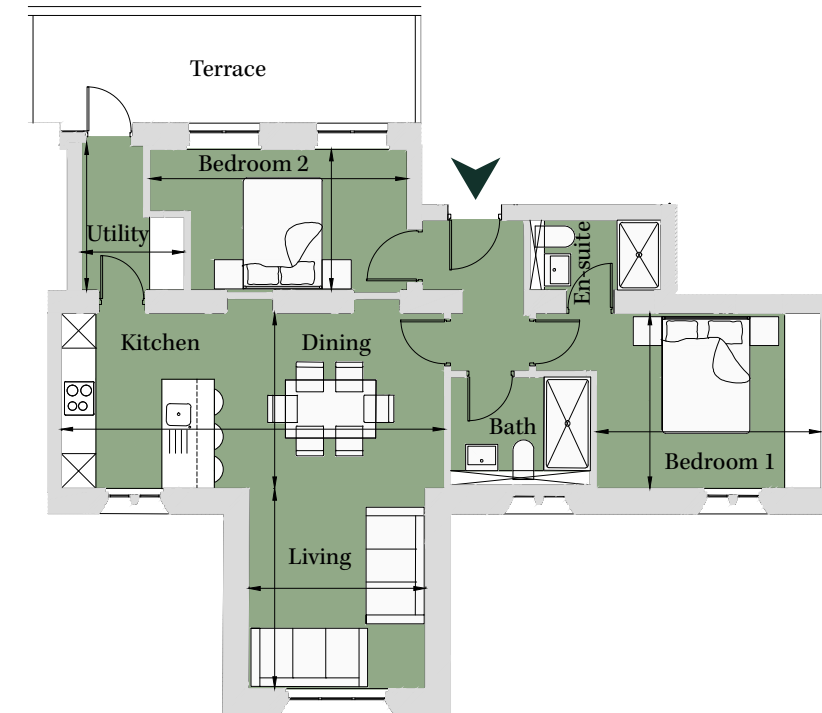
PLOT CE07
2 Bedroom Apartment

First Floor
Total area 779 sq ft (72.4 sq m)

Kitchen/Dining	9' 11" x 21' 7"	(3.00m x 6.58m)
Living	11' 3" x 9' 11"	(3.42m x 3.03m)
Bedroom 1	9' 10" x 12' 8"	(3.00m x 3.85m)
Bedroom 2	7' 11" x 14' 6"	(2.41m x 4.42m)
Utility	5' 10" x 8' 4"	(1.77m x 2.54m)

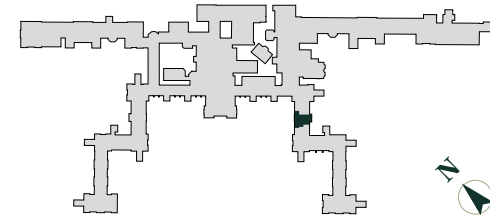


Site Location Plan

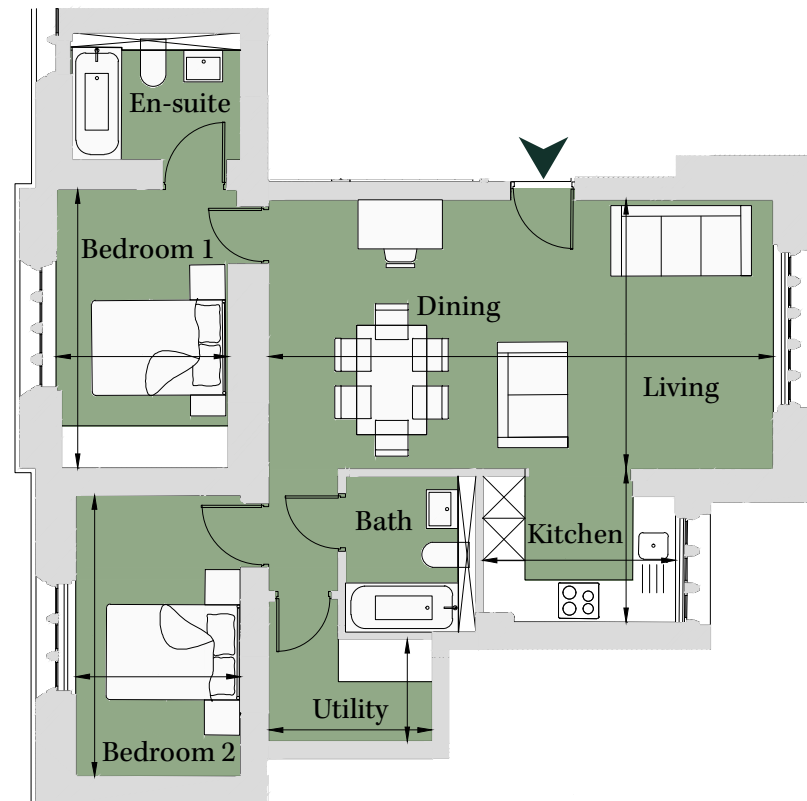


PLOT PW02
2 Bedroom Apartment

Ground Floor		
Total area 786 sq ft (73 sq m)		
Living/Dining	12' 7" x 23' 7"	(3.82m x 7.17m)
Kitchen	7' 2" x 9'	(2.17m x 2.74m)
Utility	7' 8" x 4' 9"	(2.33m x 1.45m)
Bedroom 1	13' x 8'	(3.96m x 2.44m)
Bedroom 2	13' 1" x 7' 8"	(3.99m x 2.34m)

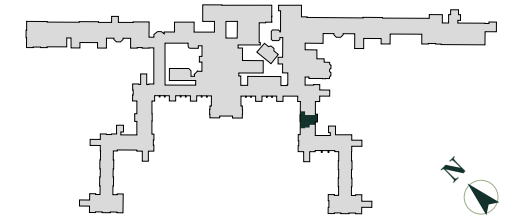


Site Location Plan

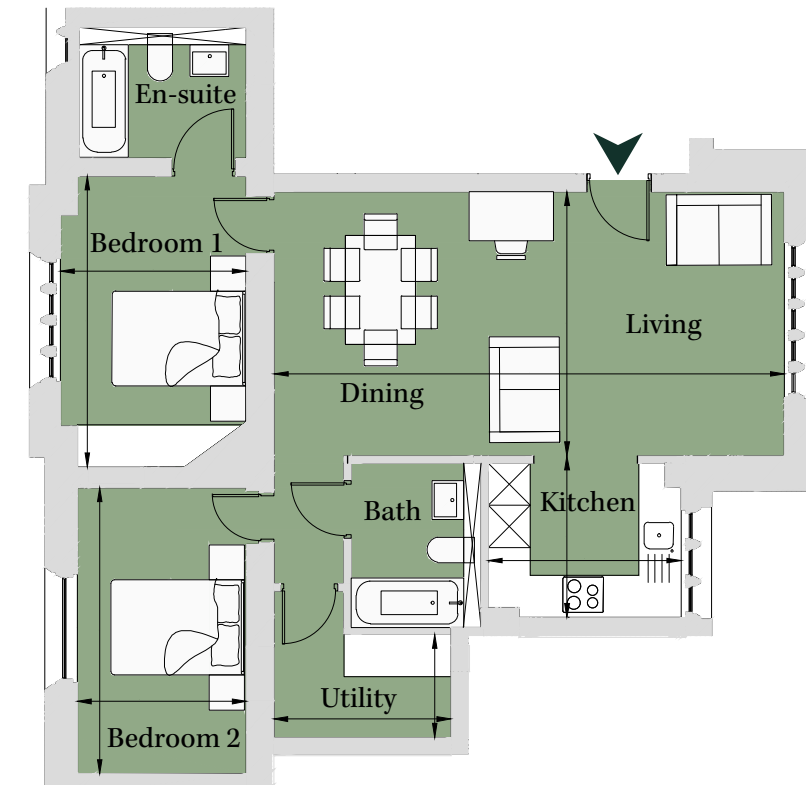


PLOT PW04
2 Bedroom Apartment

First Floor		
Total area 799 sq ft (74.2 sq m)		
Living/Dining	12' 4" x 23' 10"	(3.75m x 7.26m)
Kitchen	7' 6" x 9'	(2.29m x 2.74m)
Utility	8' 3" x 4' 10"	(2.52m x 1.47m)
Bedroom 1	13' 7" x 8' 8"	(4.13m x 2.64m)
Bedroom 2	13' 4" x 7' 11"	(4.06m x 2.40m)



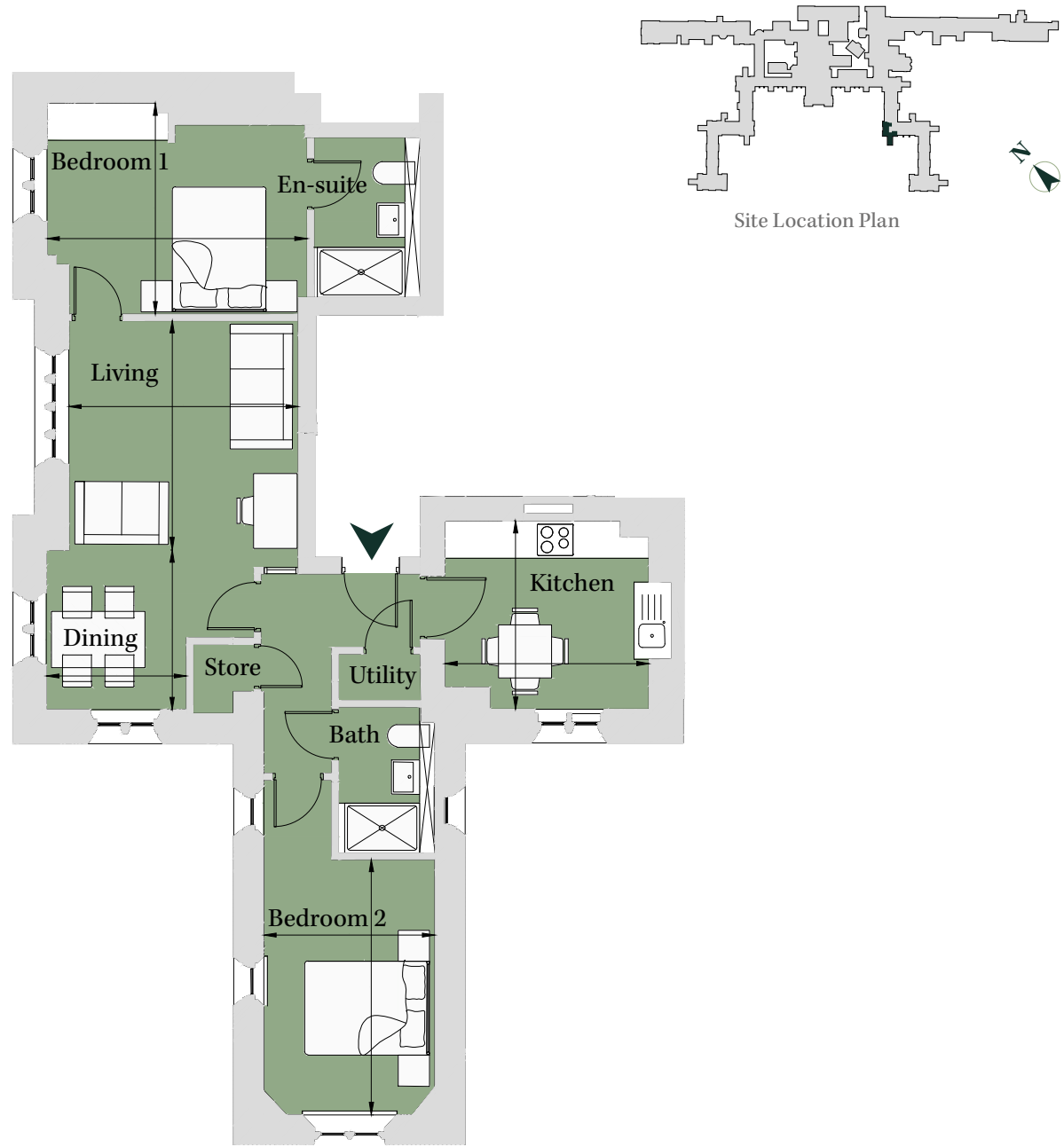
Site Location Plan



PLOT RO04
2 Bedroom Apartment

First Floor
Total area 809 sq ft (75.2 sq m)

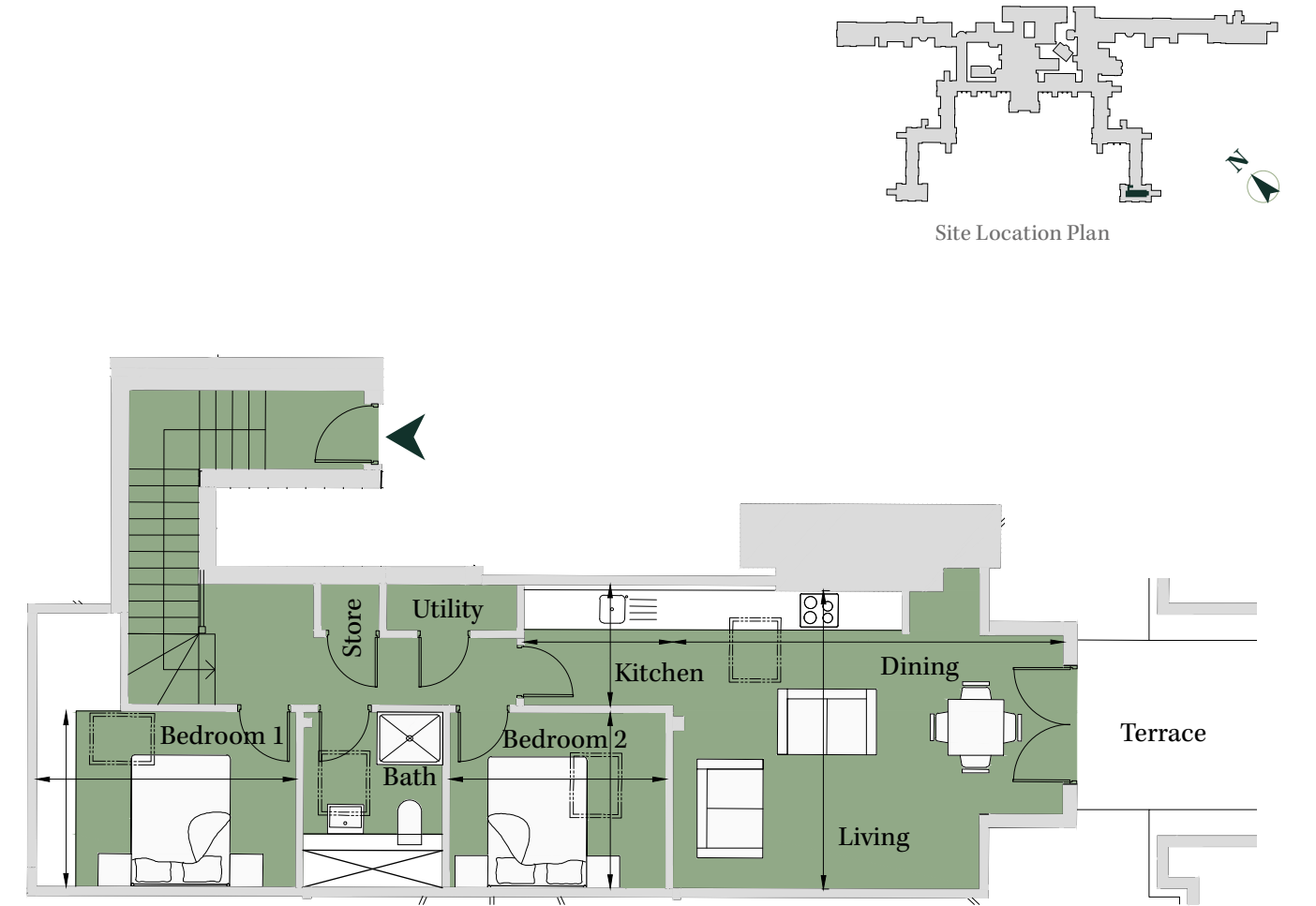
Living	12' 1" x 12' 1"	(3.67m x 3.67m)
Dining	8' 5" x 7' 5"	(2.55m x 2.24m)
Kitchen	9' 11" x 10' 9"	(3.02m x 3.27m)
Bedroom 1	13' 8" x 11' 1"	(4.17m x 3.38m)
Bedroom 2	9' x 13' 5"	(2.75m x 4.09m)



PLOT JA15
2 Bedroom Apartment

Third Floor
Total area 810 sq ft (75.2 sq m)

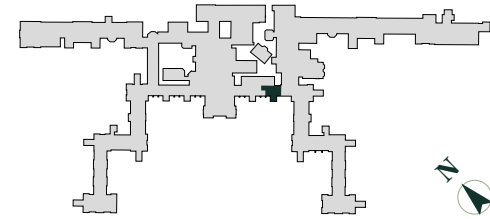
Living/Dining	14' 10" x 19' 6"	(4.52m x 5.93m)
Kitchen	6' 1" x 7' 5"	(1.84m x 2.26m)
Bedroom 1	8' 9" x 13'	(2.66m x 3.94m)
Bedroom 2	8' 9" x 10' 10"	(2.66m x 3.28m)



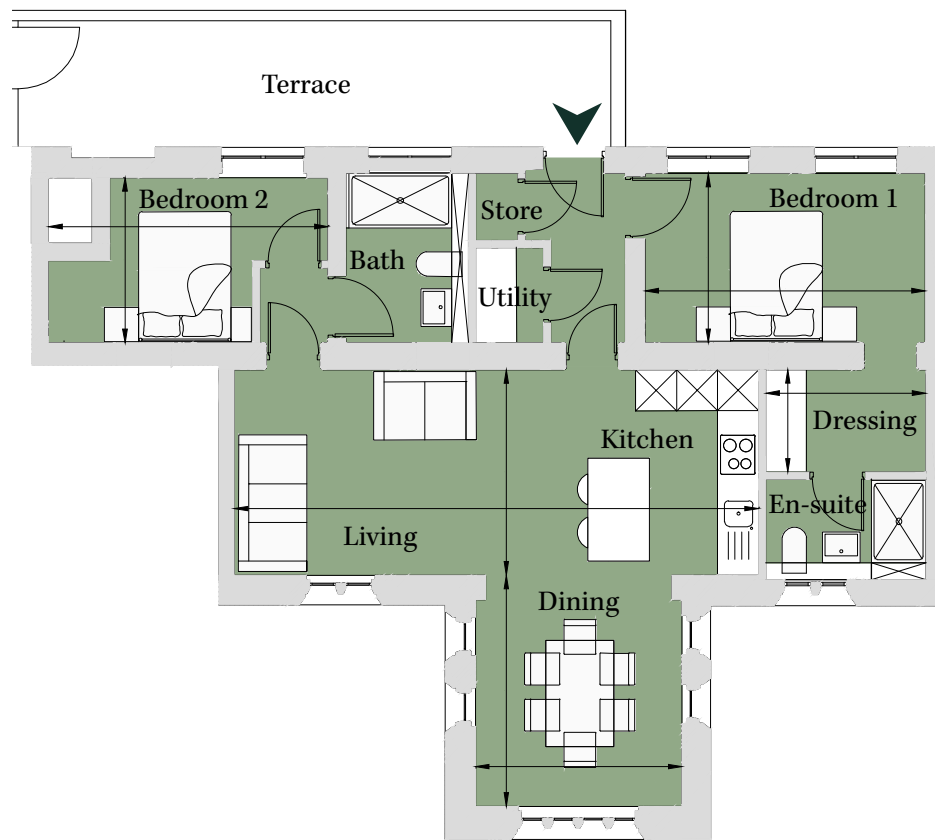
PLOT CE06
2 Bedroom Apartment

First Floor
Total area 811 sq ft (75.3 sq m)

Kitchen/Living	9' 10" x 25' 2"	(3.00m x 7.67m)
Dining	11' 1" x 9' 11"	(3.38m x 3.02m)
Bedroom 1	8' 2" x 13' 6"	(2.47m x 4.10m)
Dressing	7' 9" x 4' 11"	(2.35m x 1.50m)
Bedroom 2	7' 11" x 13' 5"	(2.41m x 4.09m)



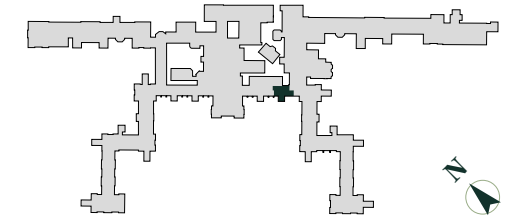
Site Location Plan



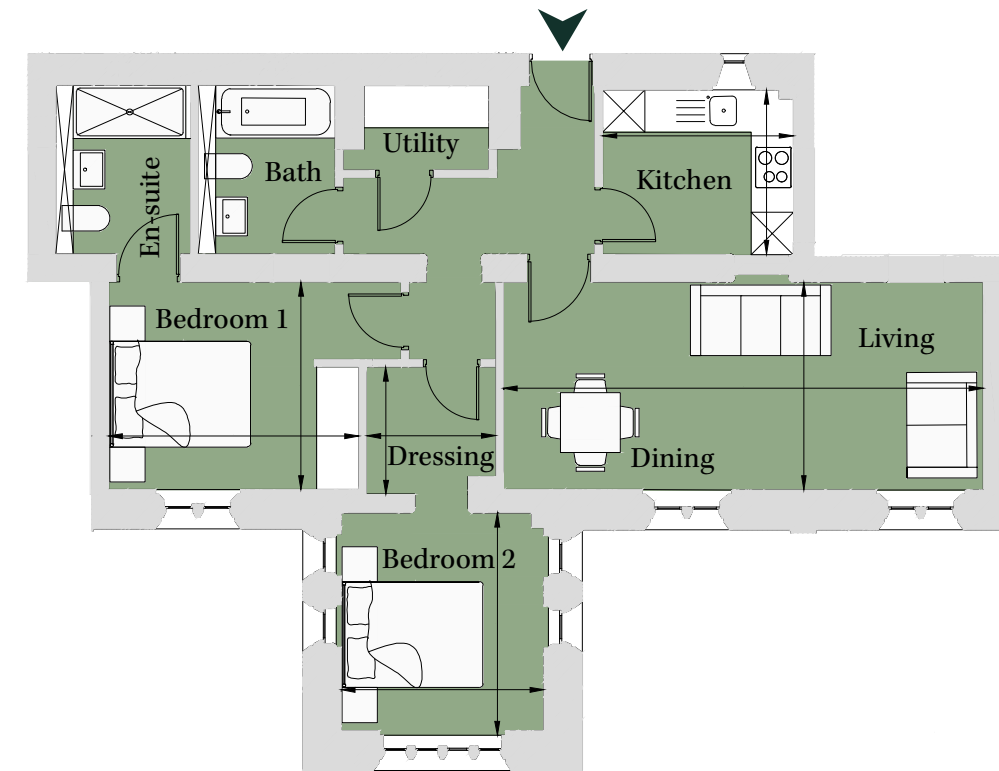
PLOT CE04
2 Bedroom Apartment

Ground Floor
Total area 811 sq ft (75.4 sq m)

Kitchen	7' 8" x 8' 11"	(2.33m x 2.71m)
Living/Dining	9' 8" x 22' 5"	(2.95m x 6.82m)
Bedroom 1	9' 8" x 11' 8"	(2.95m x 3.56m)
Bedroom 2	10' 5" x 9' 6"	(3.16m x 2.88m)
Dressing	6' 1" x 5' 11"	(1.85m x 1.81m)



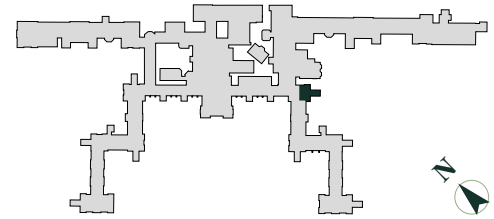
Site Location Plan



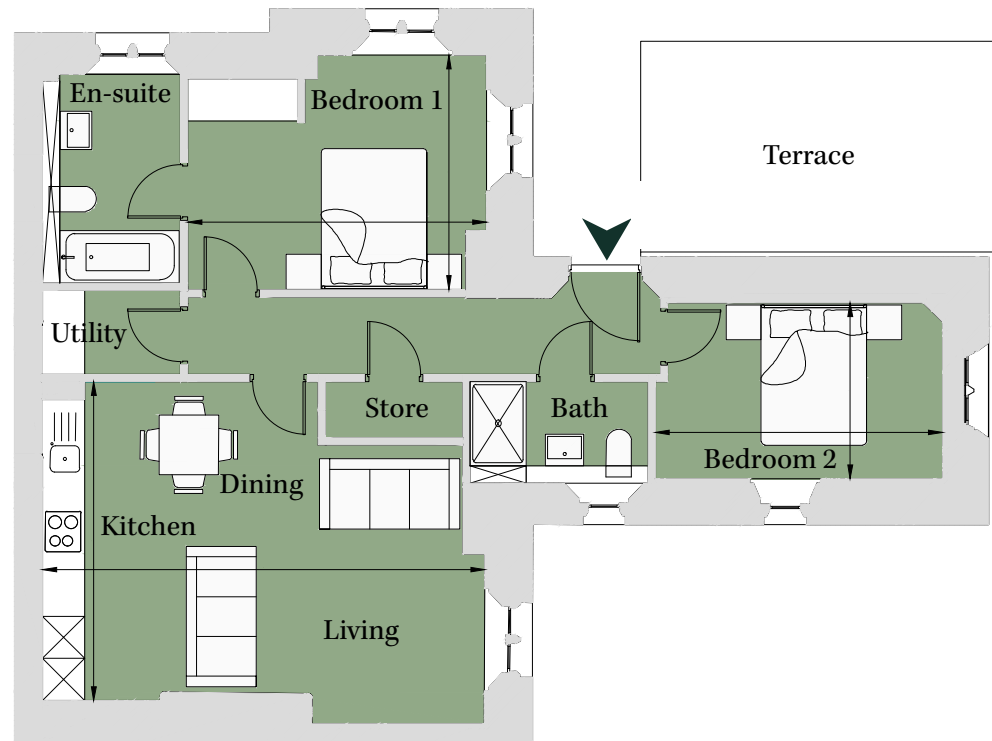
PLOT PR03
2 Bedroom Apartment

Ground Floor
Total area 814 sq ft (75.6 sq m)

Living/Dining /Kitchen	14' 11" x 20' 8"	(4.54m x 6.29m)
Bedroom 1	11' x 14'	(3.34m x 4.25m)
Bedroom 2	8' 3" x 13' 5"	(2.50m x 4.09m)



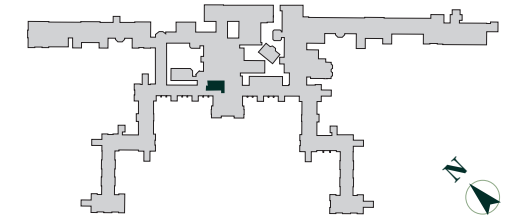
Site Location Plan



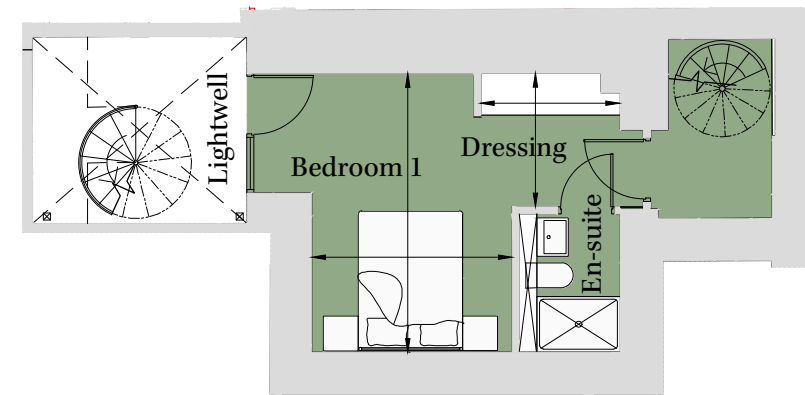
PLOT CC05
2 Bedroom Apartment

Ground/Lower Ground Floor
Total area 819 sq ft (76.1 sq m)

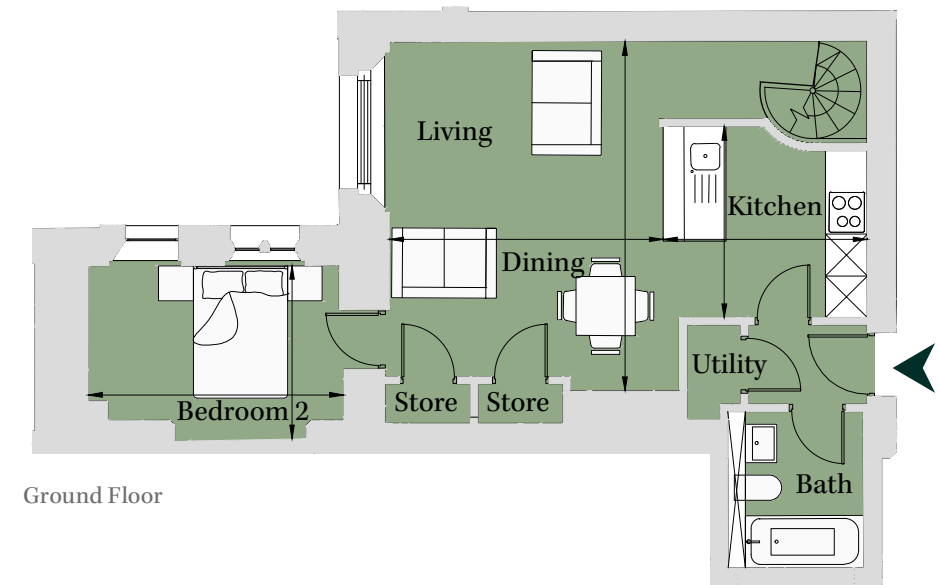
Living/Dining	16' 6" x 12' 11"	(5.01m x 3.93m)
Kitchen	9' x 9' 7"	(2.75m x 2.92m)
Bedroom 1	13' 2" x 9' 5"	(4.00m x 2.87m)
Dressing	6' 7" x 6' 3"	(2.00m x 1.92m)
Bedroom 2	8' 2" x 12' 1"	(2.49m x 3.67m)



Site Location Plan



Lower Ground Floor

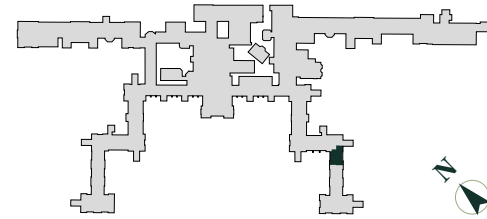


Ground Floor

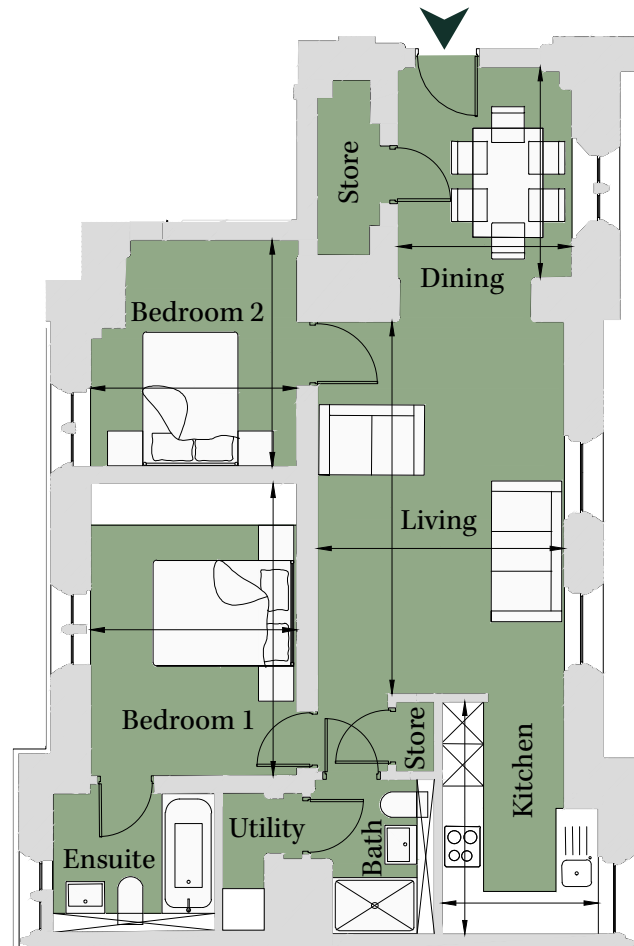
PLOT LU07
2 Bedroom Apartment

Ground Floor
Total area 822 sq ft (76.4 sq m)

Living	17' 5" x 11' 6"	(5.29m x 3.51m)
Dining	9' 10" x 8' 2"	(2.99m x 2.48m)
Kitchen	10' 10" x 7' 4"	(3.31m x 2.22m)
Bedroom 1	13' 8" x 9' 7"	(4.15m x 2.93m)
Bedroom 2	10' 7" x 9' 8"	(3.22m x 2.93m)



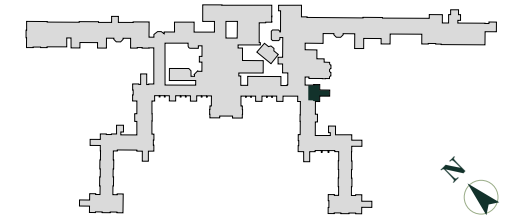
Site Location Plan



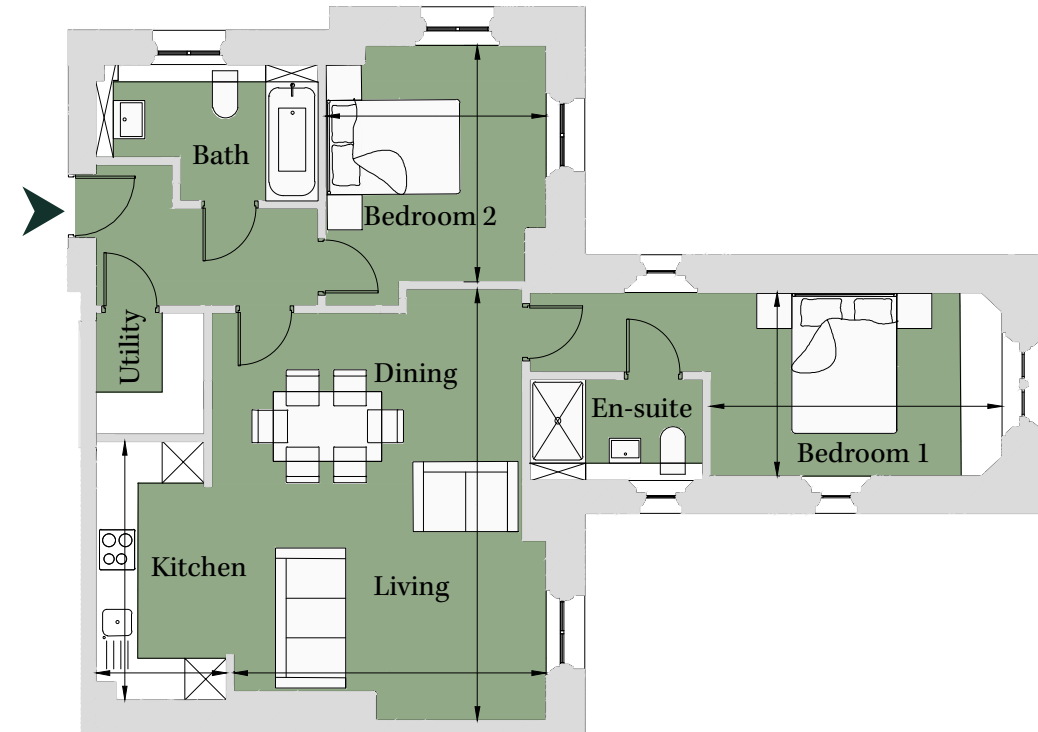
PLOT PR06
2 Bedroom Apartment

First Floor
Total area 825 sq ft (76.7 sq m)

Kitchen	6' 2" x 12' 2"	(1.87m x 3.70m)
Living/Dining	14' 8" x 20' 3"	(4.46m x 6.17m)
Bedroom 1	8' 7" x 13' 8"	(2.62m x 4.17m)
Bedroom 2	11' 1" x 10' 4"	(3.37m x 3.15m)



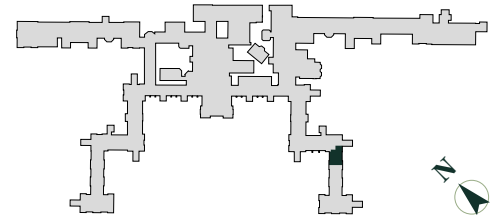
Site Location Plan



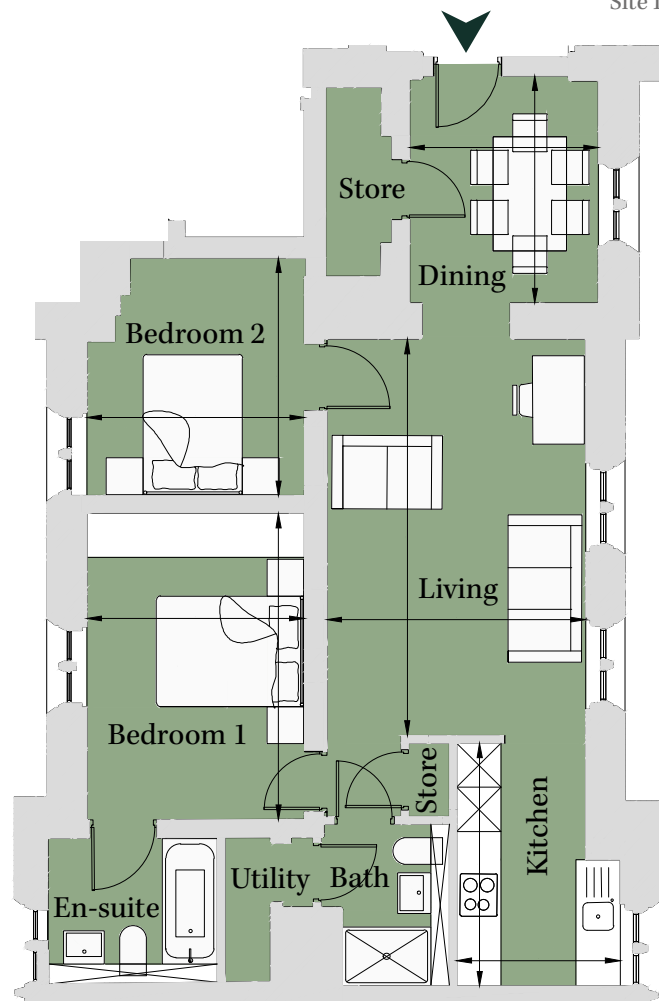
PLOT LU10
2 Bedroom Apartment

First Floor
Total area 828 sq ft (77 sq m)

Living	17' 8" x 11' 6"	(5.38m x 3.50m)
Dining	10' 1" x 8' 5"	(3.08m x 2.56m)
Kitchen	10' 10" x 7' 3"	(3.29m x 2.21m)
Bedroom 1	13' 8" x 9' 8"	(4.15m x 2.95m)
Bedroom 2	10' 7" x 9' 8"	(3.22m x 2.95m)



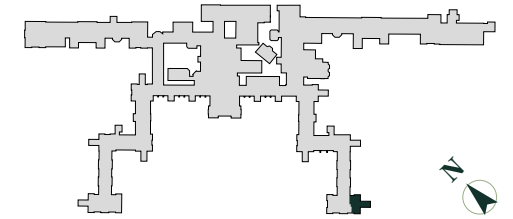
Site Location Plan



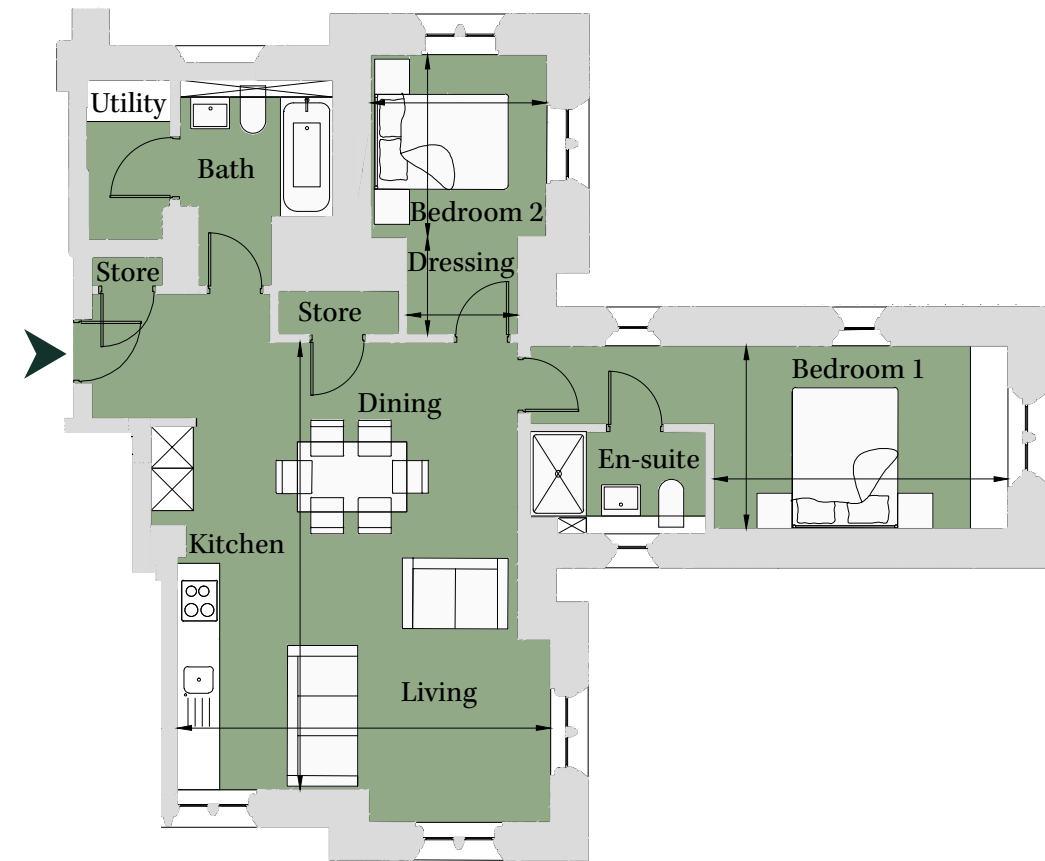
PLOT JA05
2 Bedroom Apartment

Ground Floor
Total area 839 sq ft (77.9 sq m)

Living/Dining	20' 11" x 17' 5"	(6.36m x 5.30m)
Bedroom 1	8' 7" x 13' 9"	(2.60m x 4.18m)
Bedroom 2	8' 3" x 8' 7"	(2.50m x 2.61m)
Dressing	5' 2" x 4' 6"	(1.58m x 1.37m)



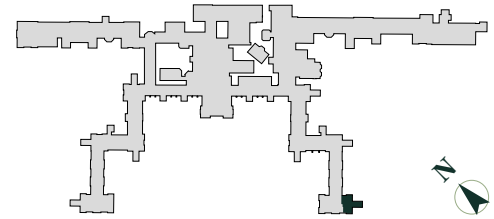
Site Location Plan



PLOT JA09
2 Bedroom Apartment

First Floor
Total area 841 sq ft (78.1 sq m)

Living/Dining		
/Kitchen	22' 5" x 17' 5"	(6.82m x 5.31m)
Bedroom 1	8' 7" x 14'	(2.60m x 4.26m)
Bedroom 2	9' 2" x 8' 8"	(2.79m x 2.63m)
Dressing	5' 3" x 4' 7"	(1.61m x 1.39m)



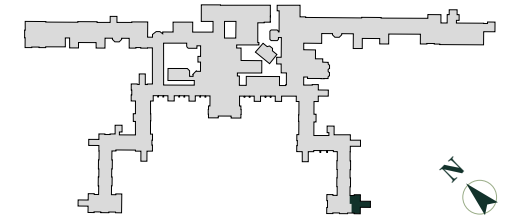
Site Location Plan



PLOT JA13
2 Bedroom Apartment

Second Floor
Total area 855 sq ft (79.4 sq m)

Living/Dining		
/Kitchen	22' 11" x 17' 10"	(6.97m x 5.43m)
Bedroom 1	8' 7" x 13' 6"	(2.60m x 4.12m)
Bedroom 2	9' 9" x 9' 2"	(2.96m x 2.79m)
Dressing	6' 10" x 4' 4"	(2.08m x 1.32m)



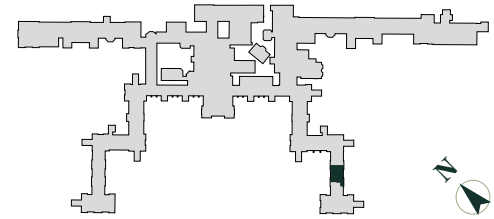
Site Location Plan



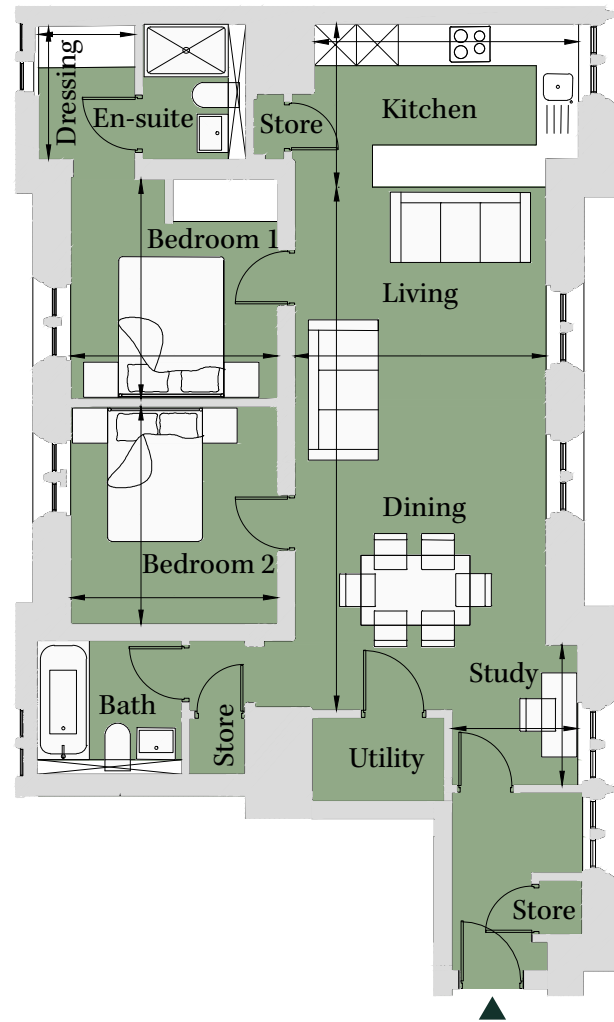
PLOT JA12
2 Bedroom Apartment

First Floor
Total area 880 sq ft (81.7 sq m)

Kitchen	12' 4" x 7' 8"	(3.77m x 2.33m)
Living/Dining	11' 9" x 24' 6"	(3.59m x 7.47m)
Study	5' 11" x 6' 7"	(1.80m x 2.00m)
Bedroom 1	10' 3" x 9' 8"	(3.13m x 2.95m)
Bedroom 2	10' 2" x 9' 8"	(3.10m x 2.95m)



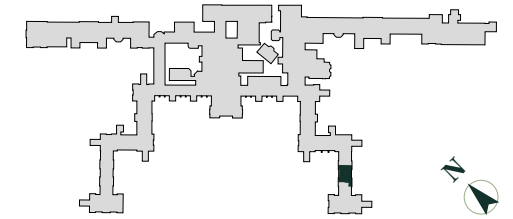
Site Location Plan



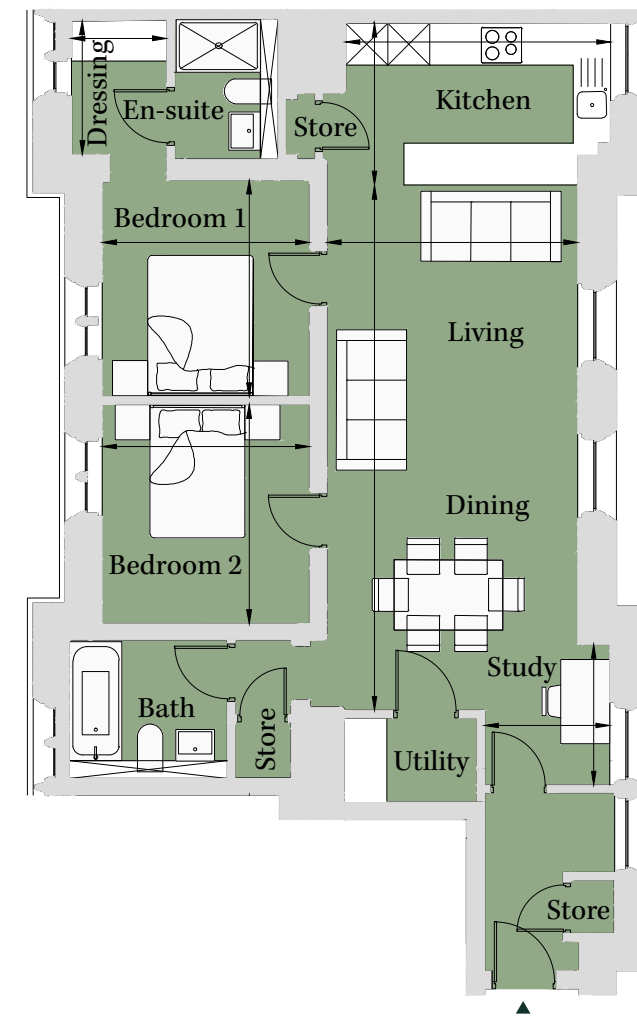
PLOT JA08
2 Bedroom Apartment

Ground Floor
Total area 882 sq ft (82 sq m)

Kitchen	12' 5" x 7' 7"	(3.78m x 2.31m)
Living/Dining	11' 9" x 24' 7"	(3.57m x 7.48m)
Study	5' 10" x 6' 7"	(1.79m x 2.01m)
Bedroom 1	10' 2" x 9' 8"	(3.08m x 2.95m)
Dressing	4' 6" x 6' 3"	(1.36m x 1.90m)
Bedroom 2	10' 3" x 9' 8"	(3.12m x 2.95m)



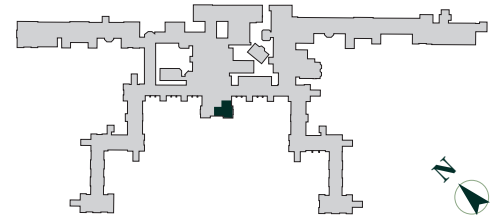
Site Location Plan



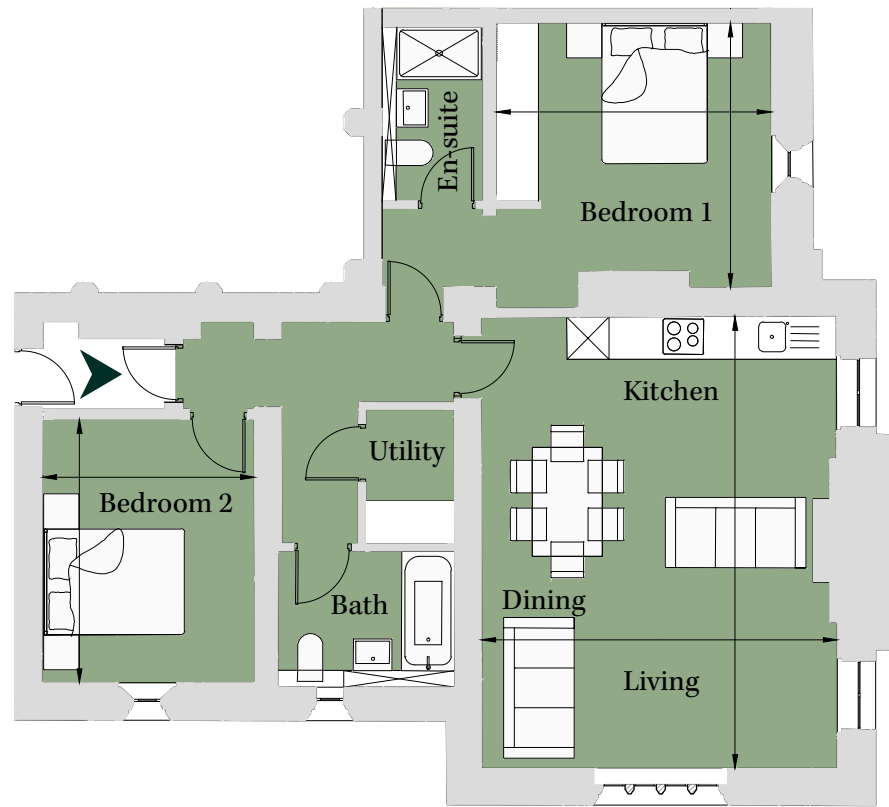
PLOT CC20 2 Bedroom Apartment

Second Floor
Total area 915 sq ft (85 sq m)

Living/Dining		
Kitchen	21' 1" x 16' 7"	(6.42m x 5.05m)
Bedroom 1	12' 4" x 12' 10"	(3.76m x 3.91m)
Bedroom 2	12' 4" x 9' 11"	(3.74m x 3.01m)



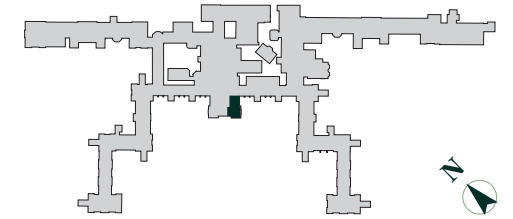
Site Location Plan



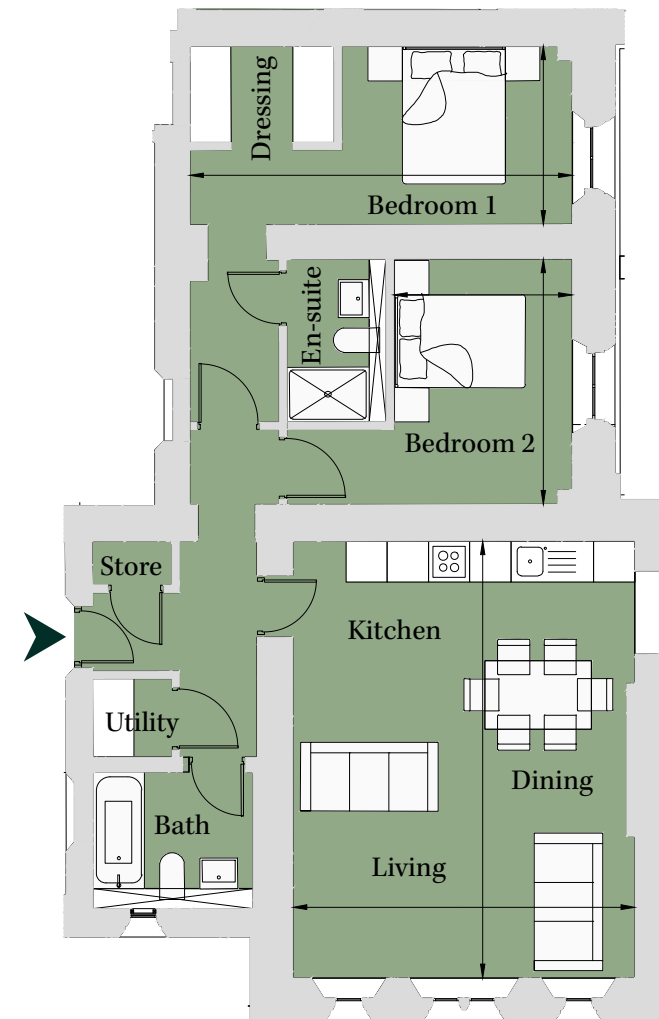
PLOT CC07 2 Bedroom Apartment

Ground Floor
Total area 938 sq ft (87.1 sq m)

Kitchen/Living		
Living/Dining	20' 10" x 16' 4"	(6.35m x 4.96m)
Bedroom 1	8' 6" x 18' 3"	(2.59m x 5.56m)
Bedroom 2	11' 9" x 8' 6"	(3.56m x 2.59m)



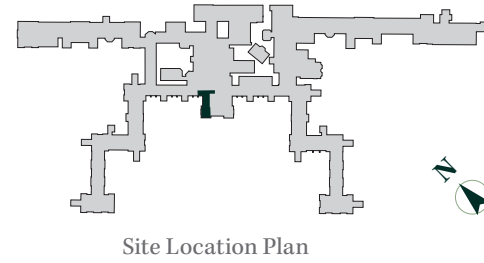
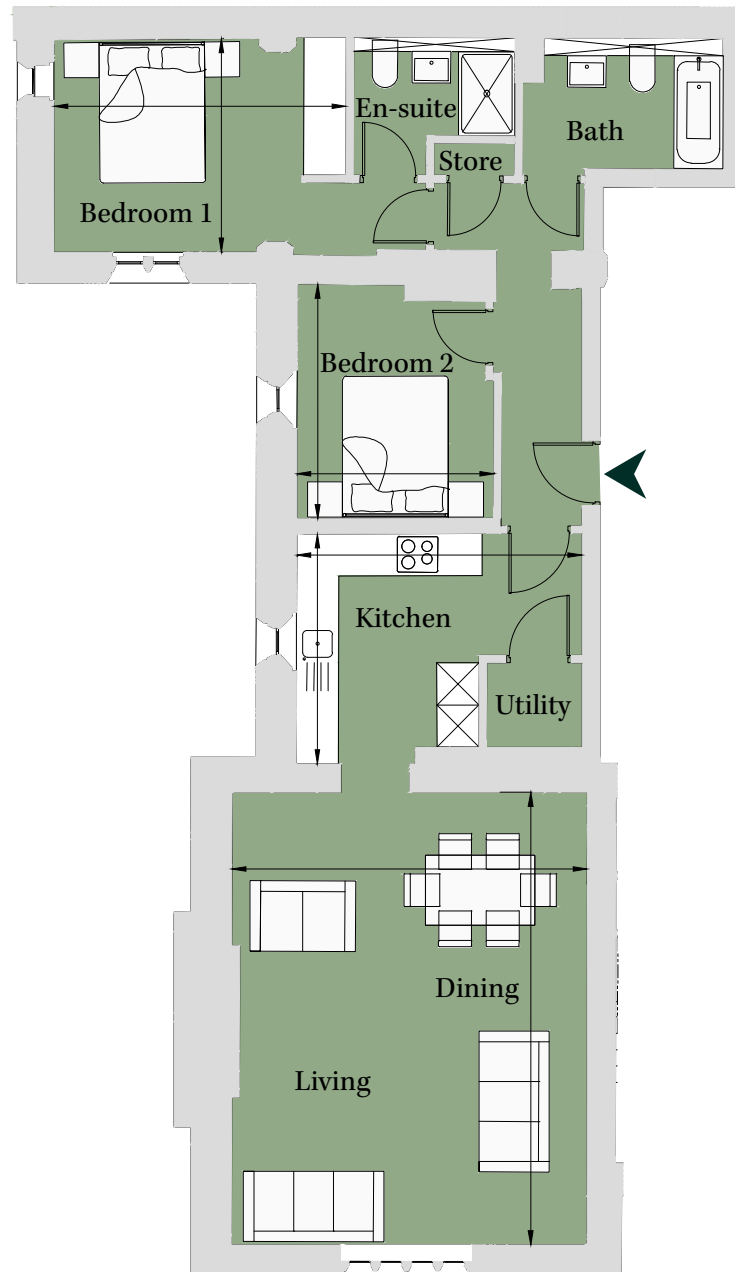
Site Location Plan



PLOT CCI4
2 Bedroom Apartment

Second Floor
Total area 971 sq ft (90.3 sq m)

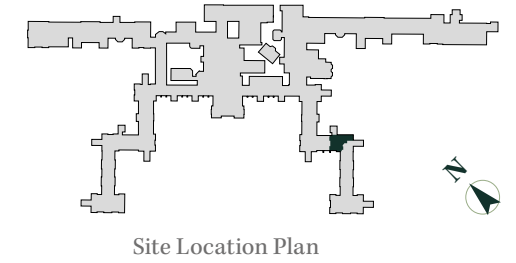
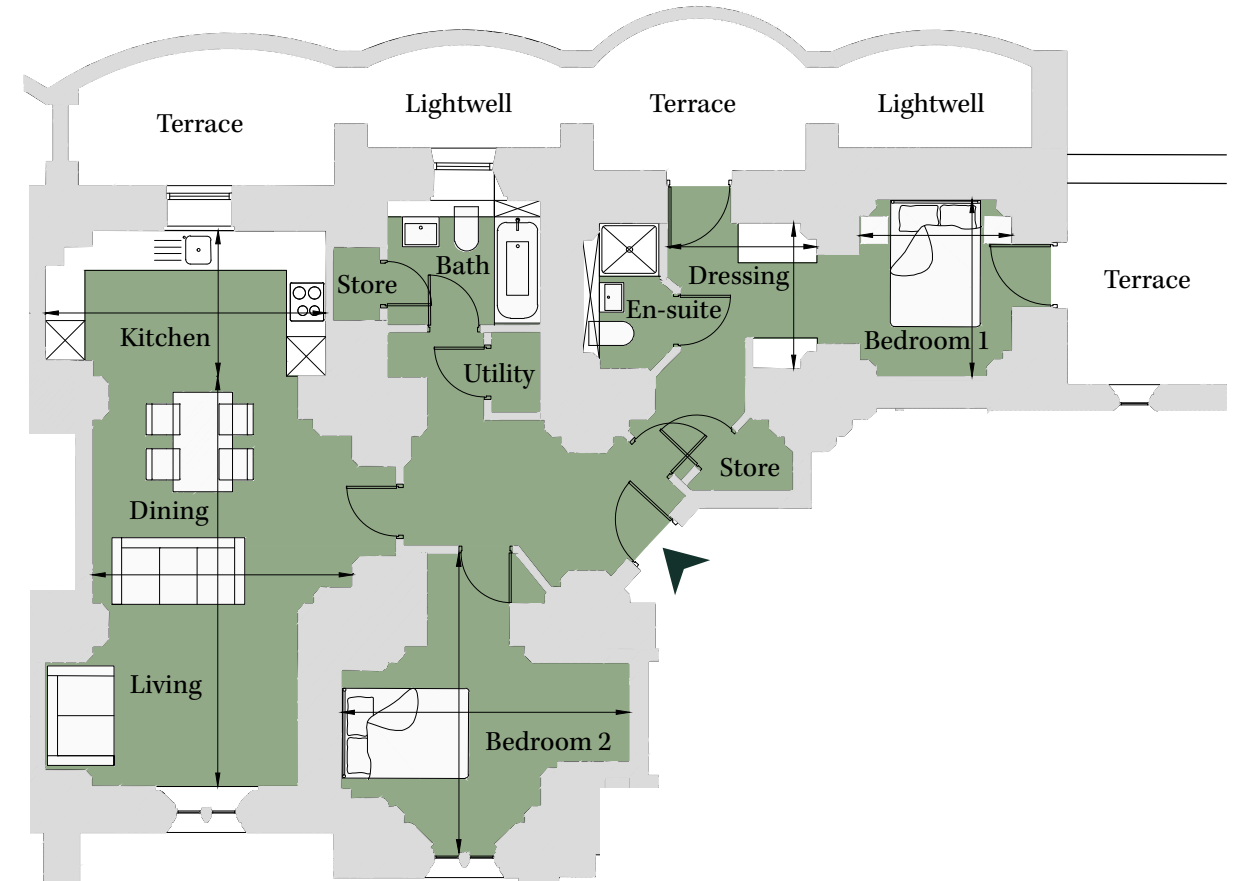
Living/Dining	21' 2" x 16' 7"	(6.43m x 5.05m)
Kitchen	10' 9" x 13' 4"	(3.27m x 4.06m)
Bedroom 1	10' x 13' 8"	(3.03m x 4.15m)
Bedroom 2	9' 2" x 10' 11"	(2.80m x 3.33m)



PLOT LU02
2 Bedroom Apartment

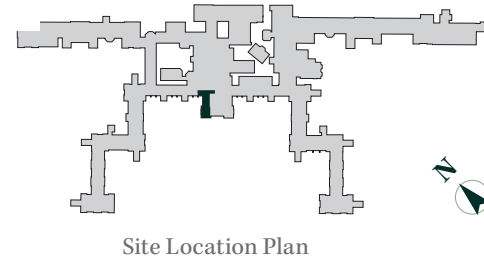
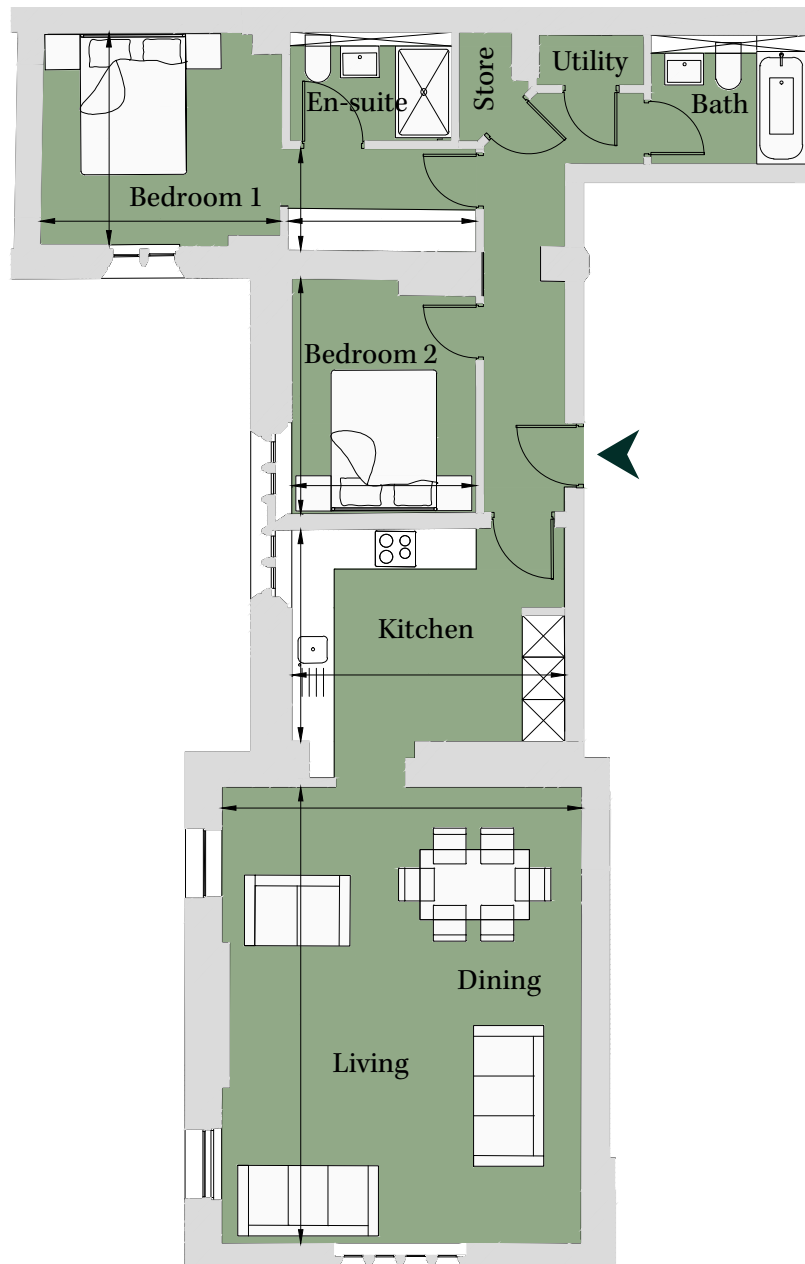
Lower Ground
Total area 979 sq ft (91 sq m)

Living/Dining	20' 3" x 12' 11"	(6.17m x 3.92m)
Kitchen	7' 3" x 13' 11"	(2.19m x 4.23m)
Bedroom 1	8' 9" x 7' 7"	(2.67m x 2.30m)
Dressing	7' 5" x 7' 2"	(2.25m x 2.19m)
Bedroom 2	14' 10" x 14' 3"	(4.51m x 4.34m)



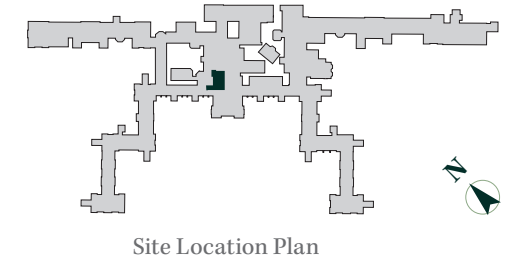
PLOT CC08 2 Bedroom Apartment

First Floor		
Total area 989 sq ft (91.9 sq m)		
Living/Dining	21' 4" x 16' 10"	(6.49m x 5.11m)
Kitchen	9' 11" x 12' 9"	(3.01m x 3.88m)
Bedroom 1	9' 11" x 11' 3"	(3.01m x 3.41m)
	4' 9" x 8' 9"	(1.45m x 2.67m)
Bedroom 2	8' 7" x 11'	(2.62m x 3.35m)



PLOT CC09 2 Bedroom Apartment

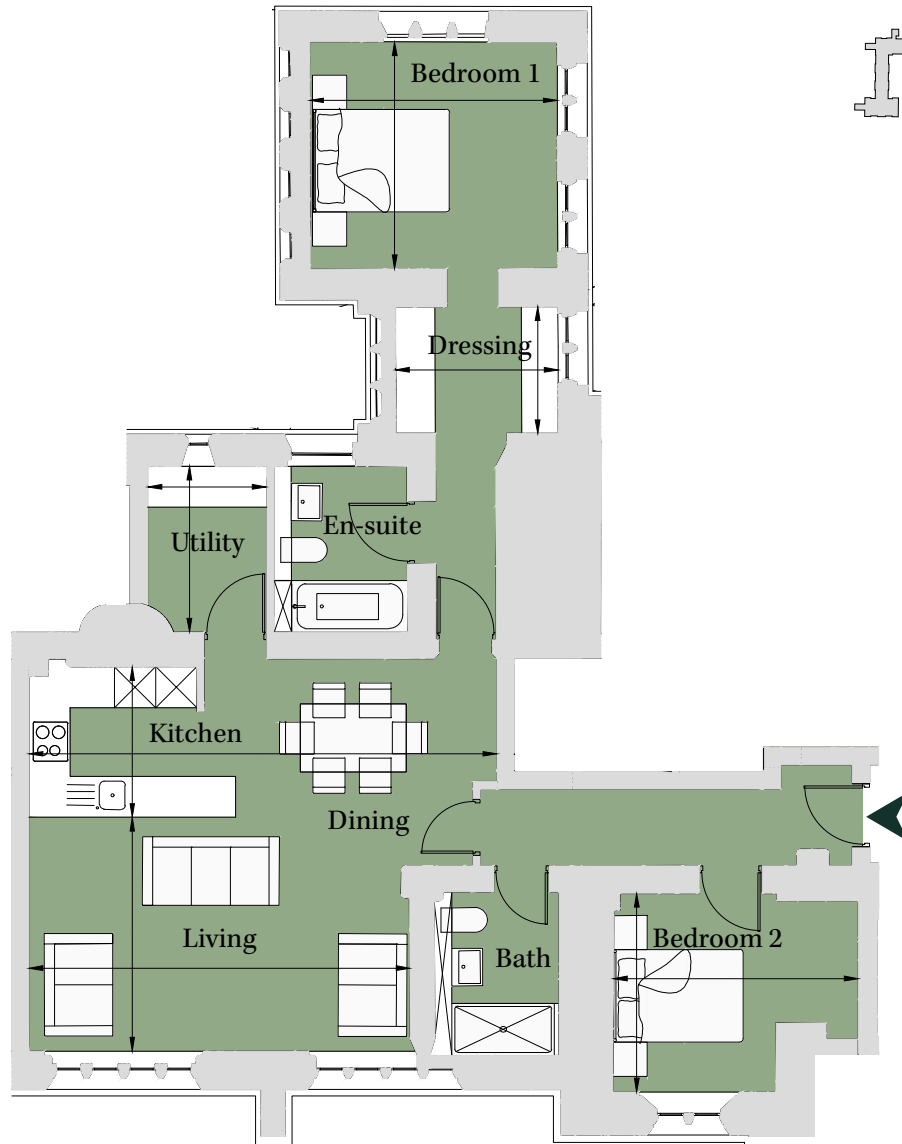
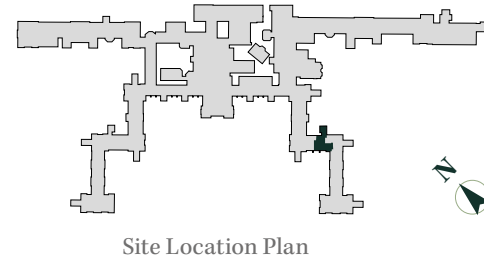
First Floor		
Total area 1,004 sq ft (93.3 sq m)		
Kitchen	7' 4" x 12' 10"	(2.23m x 3.91m)
Living/Dining	13' x 22' 3"	(3.95m x 6.78m)
Study	9' 9" x 4' 10"	(2.96m x 1.46m)
Bedroom 1	8' 10" x 12' 6"	(2.68m x 3.81m)
Dressing	7' 6" x 10' 11"	(2.29m x 3.32m)
Bedroom 2	10' 6" x 9' 9"	(3.19m x 2.97m)



PLOT LU05 2 Bedroom Apartment

Ground Floor
Total area 1,014 sq ft (94.2 sq m)

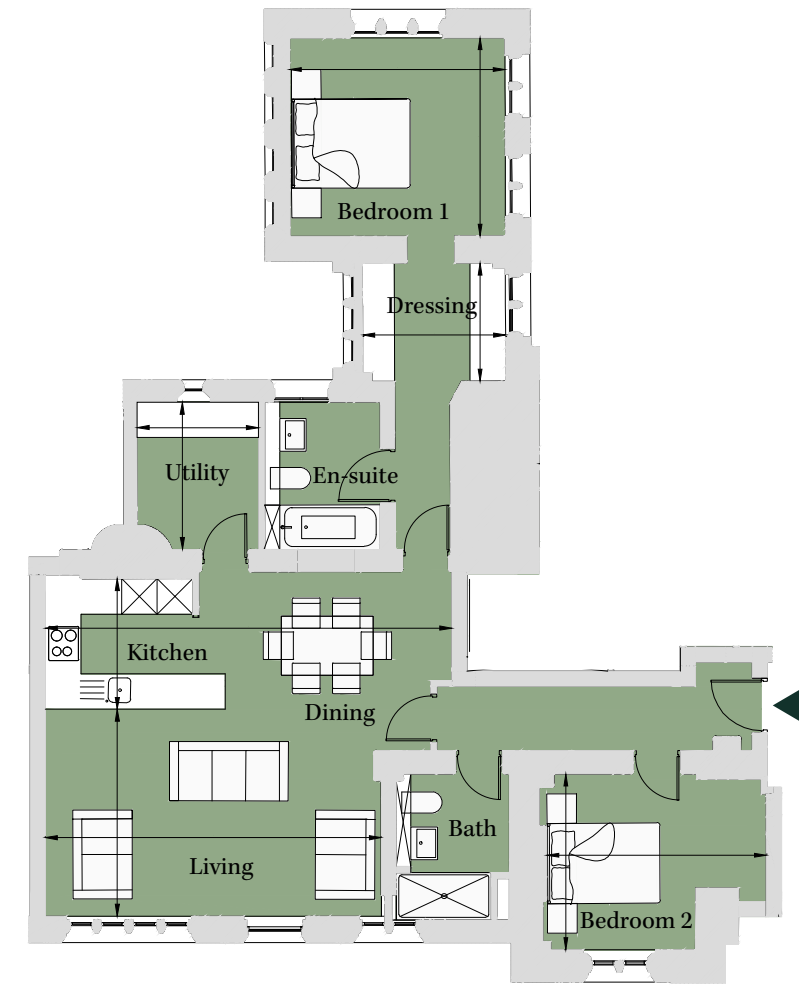
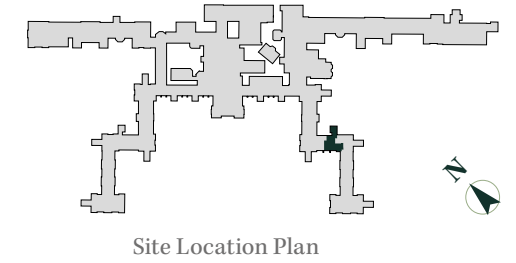
Living/Dining	11' 3" x 18' 3"	(3.41m x 5.56m)
Kitchen	7' 3" x 22' 6"	(2.20m x 6.84m)
Bedroom 1	10' 11" x 11' 11"	(3.31m x 3.62m)
Dressing	7' 10" x 6' 1"	(2.38m x 1.85m)
Bedroom 2	9' 6" x 11' 9"	(2.90m x 3.58m)
Utility	5' 9" x 8'	(1.75m x 2.43m)



PLOT LU08 2 Bedroom Apartment

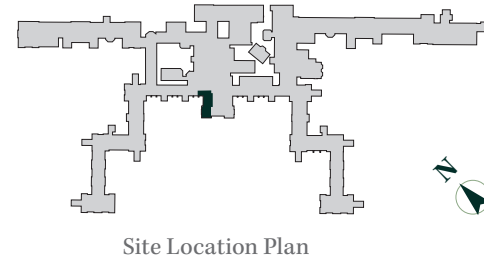
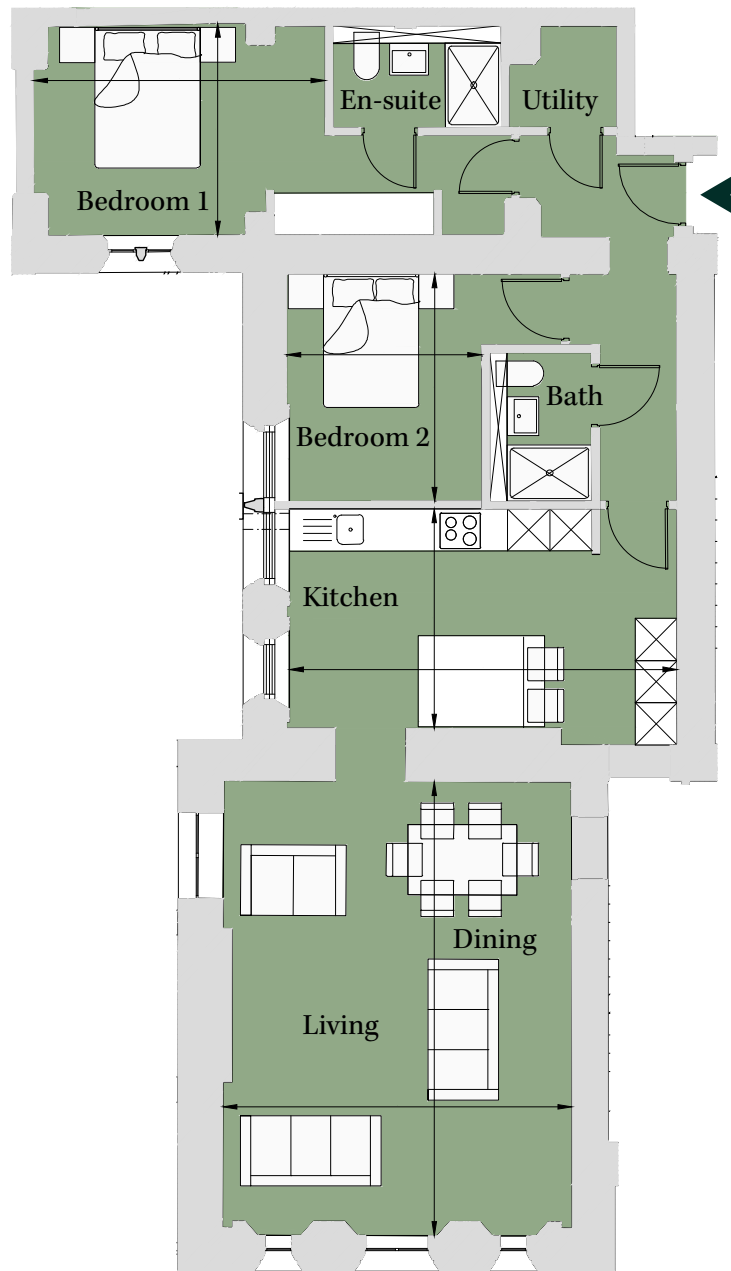
First Floor
Total area 1,025 sq ft (95.3 sq m)

Living	11' 5" x 18' 7"	(3.48m x 5.66m)
Dining/Kitchen	7' 3" x 22' 6"	(2.20m x 6.85m)
Bedroom 1	11' x 11' 11"	(3.33m x 3.63m)
Dressing	7' 11" x 6' 6"	(2.41m x 1.99m)
Bedroom 2	9' 9" x 12' 2"	(2.95m x 3.70m)
Utility	6' 9" x 8' 2"	(2.06m x 2.48m)



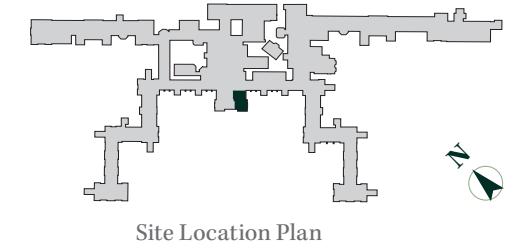
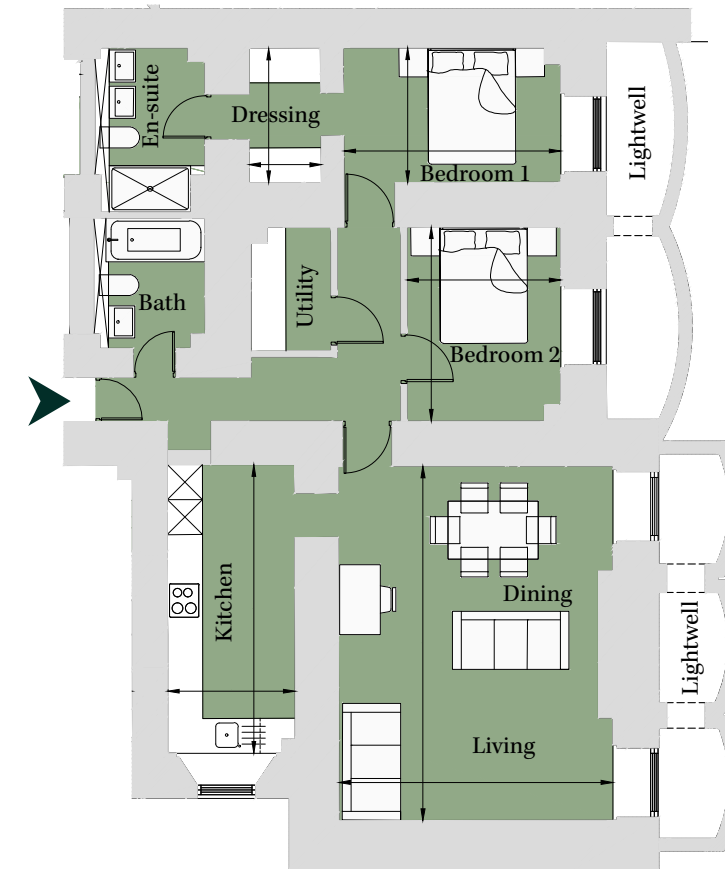
PLOT CC04
2 Bedroom Apartment

Ground Floor		
Total area 1,062 sq ft (98.7 sq m)		
Living/Dining	21' 2" x 16' 3"	(6.45m x 4.96m)
Kitchen	10' 3" x 18' 1"	(3.12m x 5.51m)
Bedroom 1	9' 11" x 13' 7"	(3.01m x 4.14m)
Bedroom 2	10' 7" x 9' 1"	(3.23m x 2.77m)



PLOT CC01
2 Bedroom Apartment

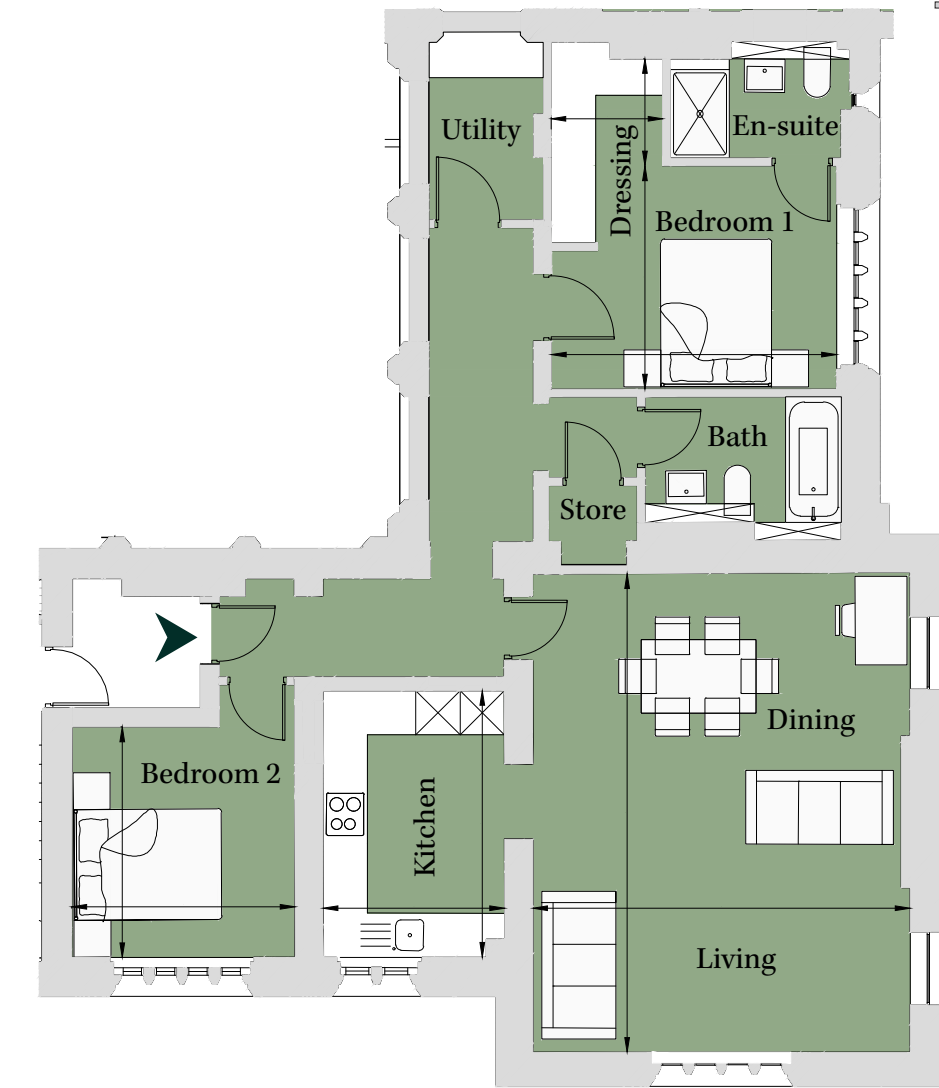
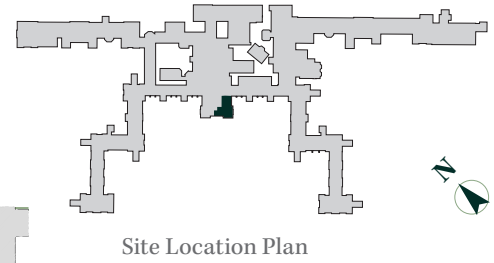
Lower Ground		
Total area 1,071 sq ft (99 sq m)		
Living/Dining	20' x 15' 5"	(6.08m x 4.70m)
Kitchen	16' 3" x 7' 2"	(4.95m x 2.18m)
Bedroom 1	7' 7" x 12' 3"	(2.31m x 3.72m)
Dressing	4' x 10' 11"	(1.23m x 3.33m)
Bedroom 2	10' 11" x 8' 8"	(3.33m x 2.64m)



PLOT CCI3
2 Bedroom Apartment

First Floor
Total area 1,093 sq ft (101.6 sq m)

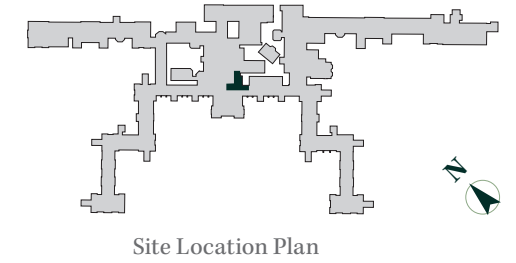
Living/Dining	21' 3" x 16' 9"	(6.47m x 5.11m)
Kitchen	11' 10" x 8' 1"	(3.61m x 2.46m)
Bedroom 1	9' 11" x 12' 8"	(3.02m x 3.86m)
	4' 9" x 5'	(1.44m x 1.51m)
Bedroom 2	10' 3" x 9' 11"	(3.12m x 3.02m)



PLOT CCI8
2 Bedroom Apartment

Second/Third Floor
Total area 1,181 sq ft (109.7 sq m)

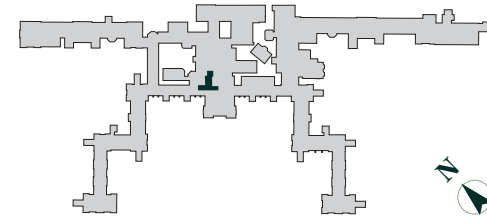
Living	17' 4" x 14' 10"	(5.28m x 4.52m)
Dining	10' x 10' 1"	(3.05m x 3.08m)
Kitchen	10' x 10' 7"	(3.03m x 3.22m)
Bedroom 1	11' 9" x 10' 5"	(3.59m x 3.16m)
Bedroom 2	10' 8" x 10' 7"	(3.23m x 3.23m)
Study	6' 1" x 7'	(1.85m x 2.14m)



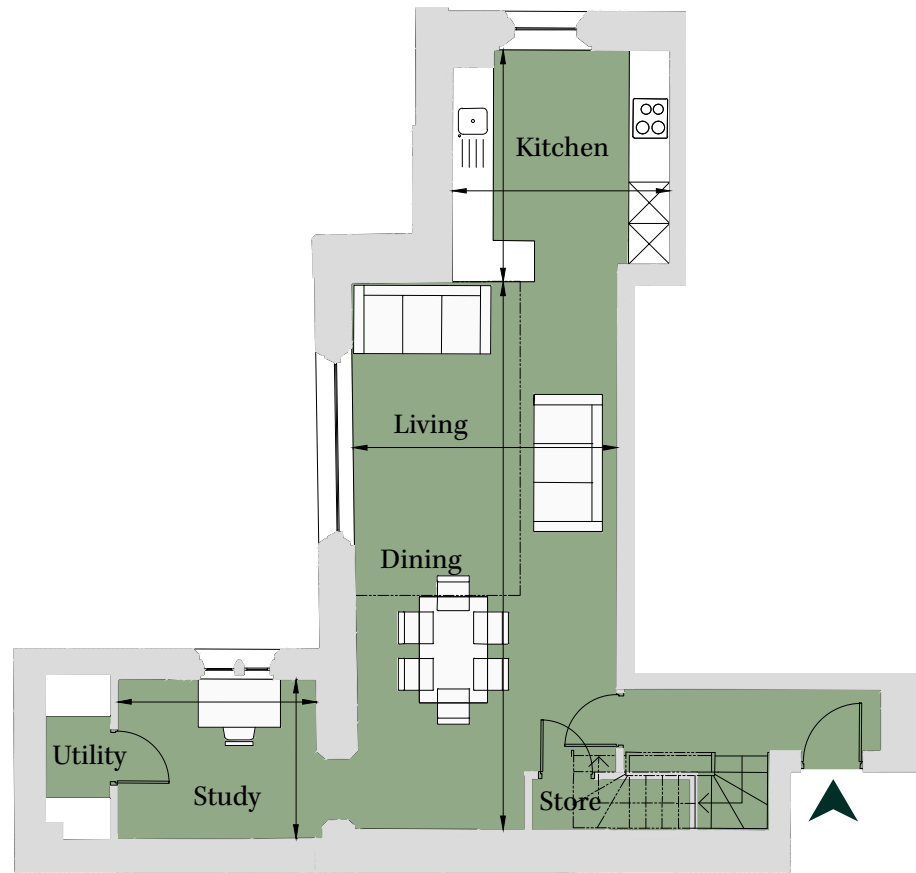
PLOT CCI5
2 Bedroom Apartment

Second/Third Floor
Total area 1,143 sq ft (106.2 sq m)

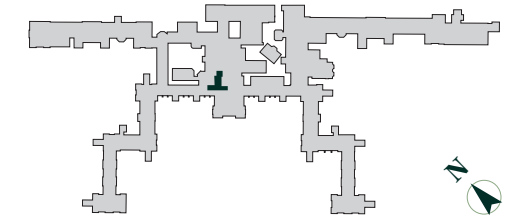
Living/Dining	26' 3" x 12' 8"	(7.99m x 3.85m)
Kitchen	11' 1" x 10' 5"	(3.38m x 3.17m)
Bedroom 1	10' 8" x 10' 1"	(3.24m x 3.06m)
Bedroom 2	10' 9" x 10' 5"	(3.27m x 3.17m)
Study	9' 6" x 7' 7"	(2.90m x 2.32m)
Dressing	6' 4" x 7' 5"	(1.94m x 2.27m)



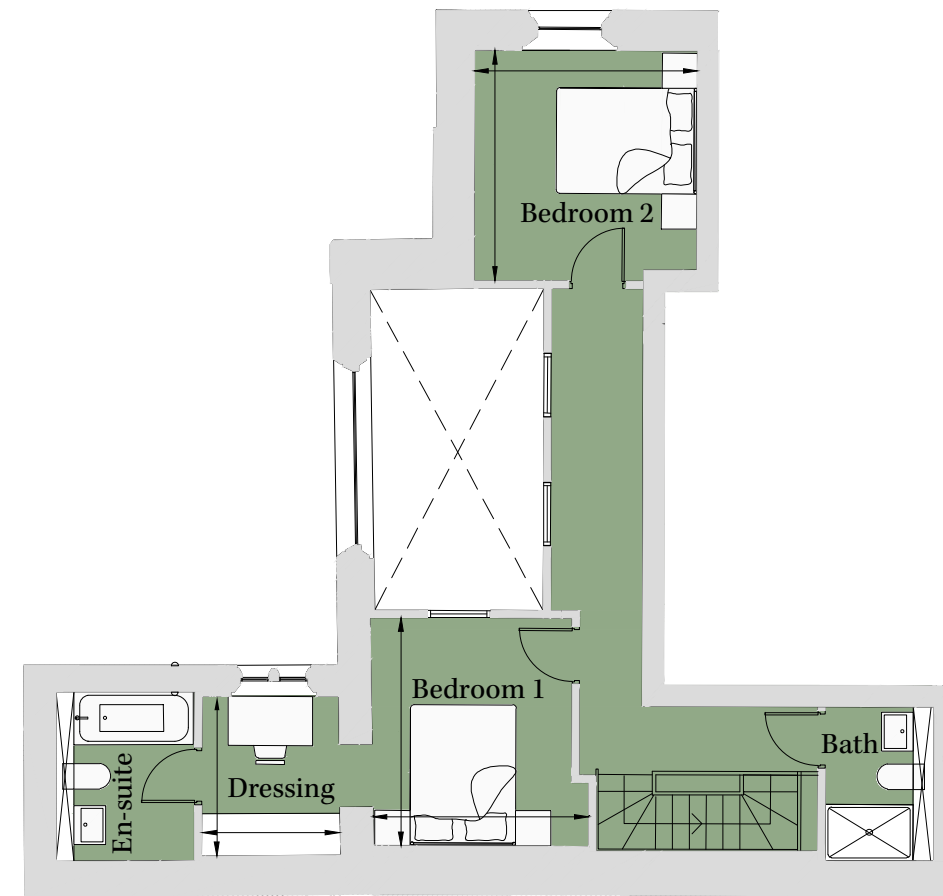
Site Location Plan



Second Floor



Site Location Plan



Third Floor

PLOT PR08
2 Bedroom Apartment

Second/Third Floor
Total area 1,241 sq ft (115.3 sq m)

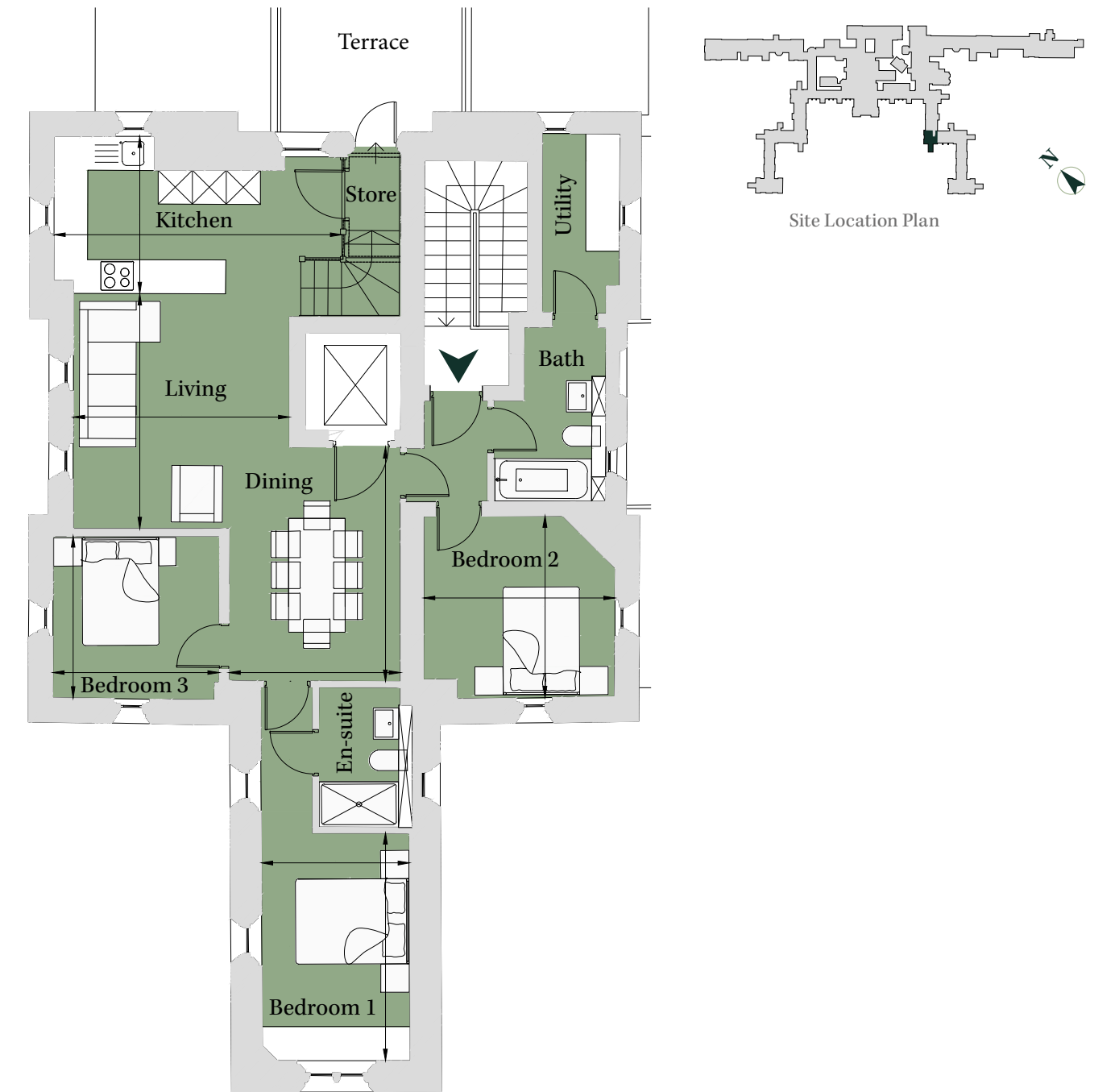
Kitchen	9' 11" x 8' 7"	(3.01m x 2.61m)
Dining	11' 10" x 8' 7"	(3.60m x 2.61m)
Living	15' 9" x 18' 3"	(4.79m x 5.57m)
Bedroom 1	10' 2" x 13' 9"	(3.09m x 4.18m)
Dressing	9' 11" x 6' 9"	(3.03m x 2.05m)
Bedroom 2	10' 1" x 9' 3"	(3.06m x 2.82m)



PLOT RO07
3 Bedroom Apartment

Second Floor
Total area 1,041 sq ft (96.7 sq m)

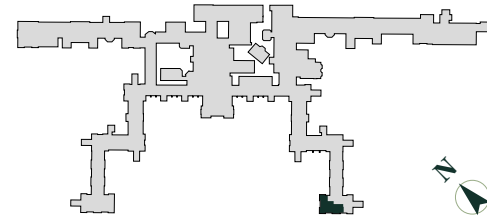
Living	13' 7" x 12' 6"	(4.13m x 3.81m)
Dining	13' 7" x 9' 11"	(4.13m x 3.02m)
Kitchen	9' 1" x 16' 8"	(2.77m x 5.07m)
Bedroom 1	13' 2" x 8' 7"	(4.01m x 2.61m)
Bedroom 2	10' 6" x 11' 1"	(3.20m x 3.37m)
Bedroom 3	9' 4" x 9' 8"	(2.85m x 2.93m)



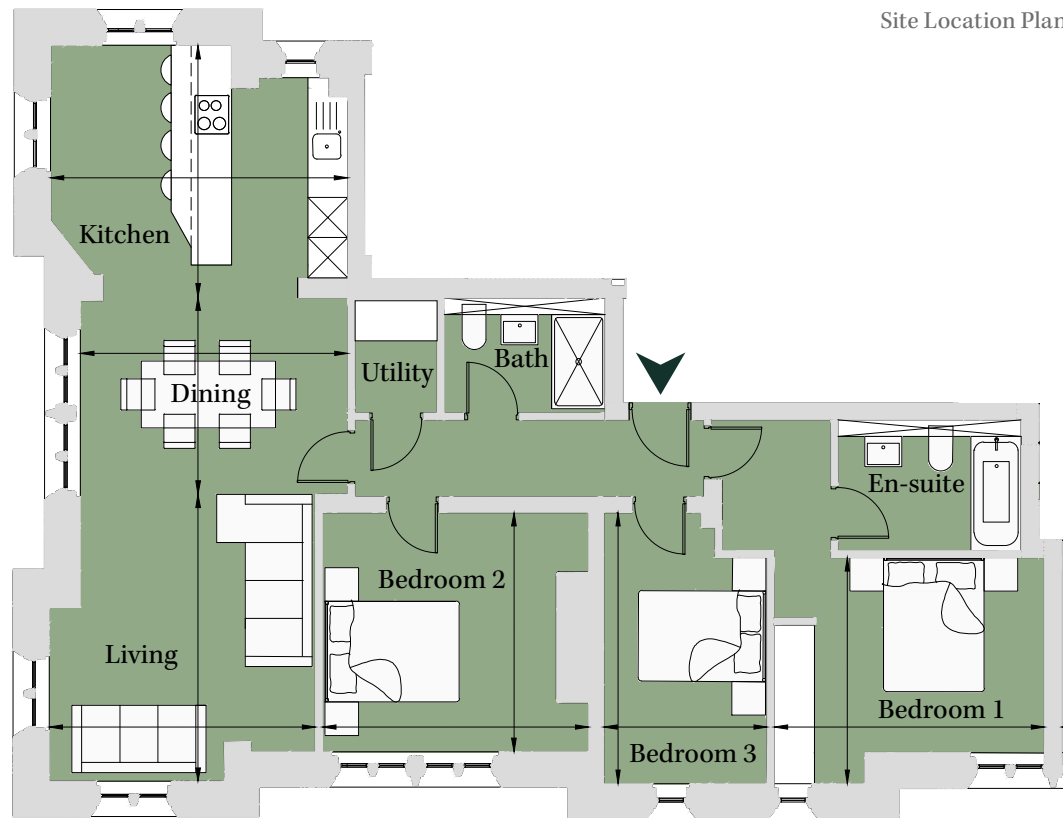
PLOT JA10
3 Bedroom Apartment

First Floor
Total area 1,119 sq ft (103.9 sq m)

Living	14' x 13'	(4.27m x 3.97m)
Dining	9' 8" x 13' 1"	(2.93m x 3.98m)
Kitchen	12' 4" x 14' 7"	(3.75m x 4.42m)
Bedroom 1	11' 1" x 13' 3"	(3.36m x 4.03m)
Bedroom 2	11' 8" x 13'	(3.56m x 3.96m)
Bedroom 3	13' 3" x 8'	(4.03m x 2.43m)



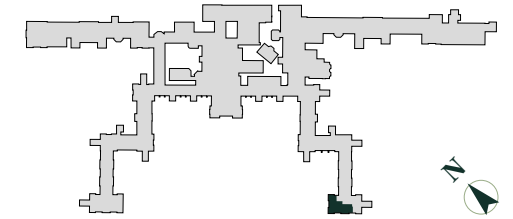
Site Location Plan



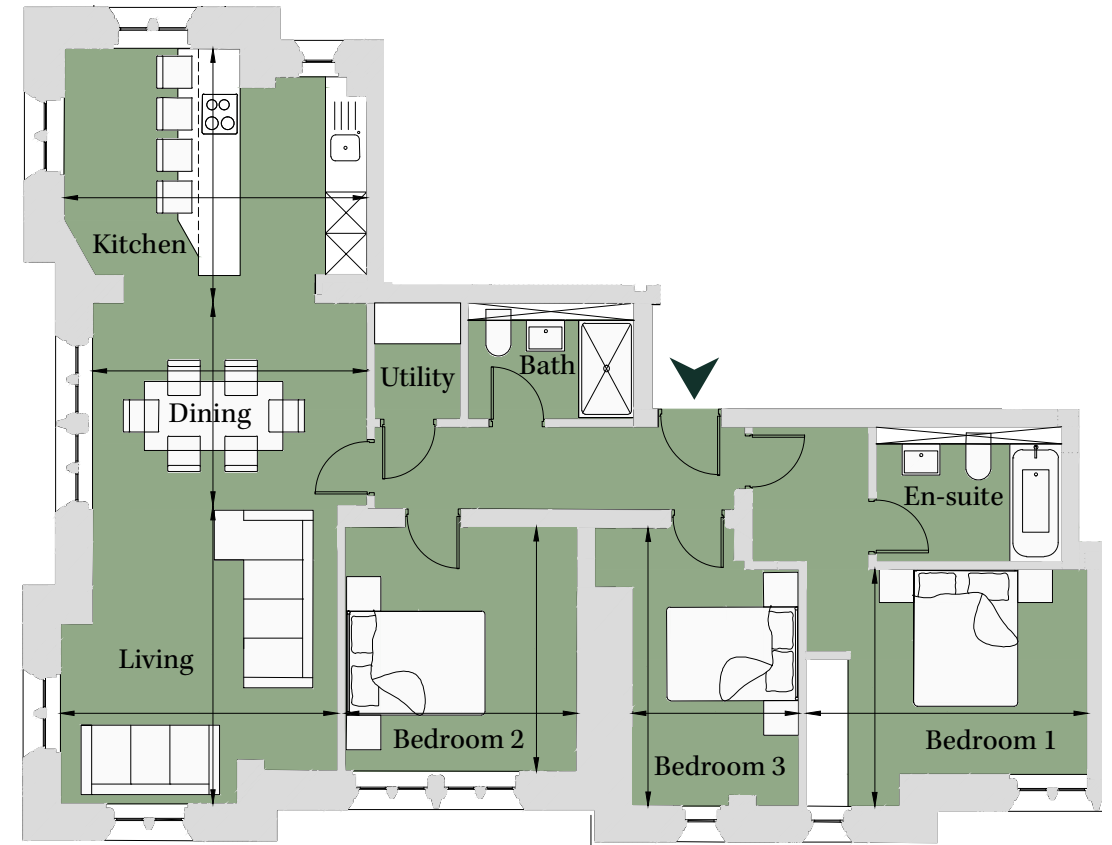
PLOT JA06
3 Bedroom Apartment

Ground Floor
Total area 1,119 sq ft (104 sq m)

Living	14' 2" x 13' 2"	(4.30m x 4.00m)
Dining	9' 8" x 13'	(2.93m x 3.96m)
Kitchen	12' x 14' 4"	(3.66m x 4.37m)
Bedroom 1	11' 3" x 13' 4"	(3.42m x 4.06m)
Bedroom 2	11' 7" x 11'	(3.52m x 3.35m)
Bedroom 3	13' 2" x 7' 11"	(4.01m x 2.41m)



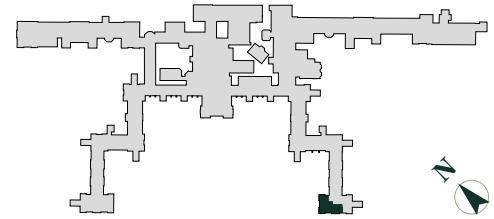
Site Location Plan



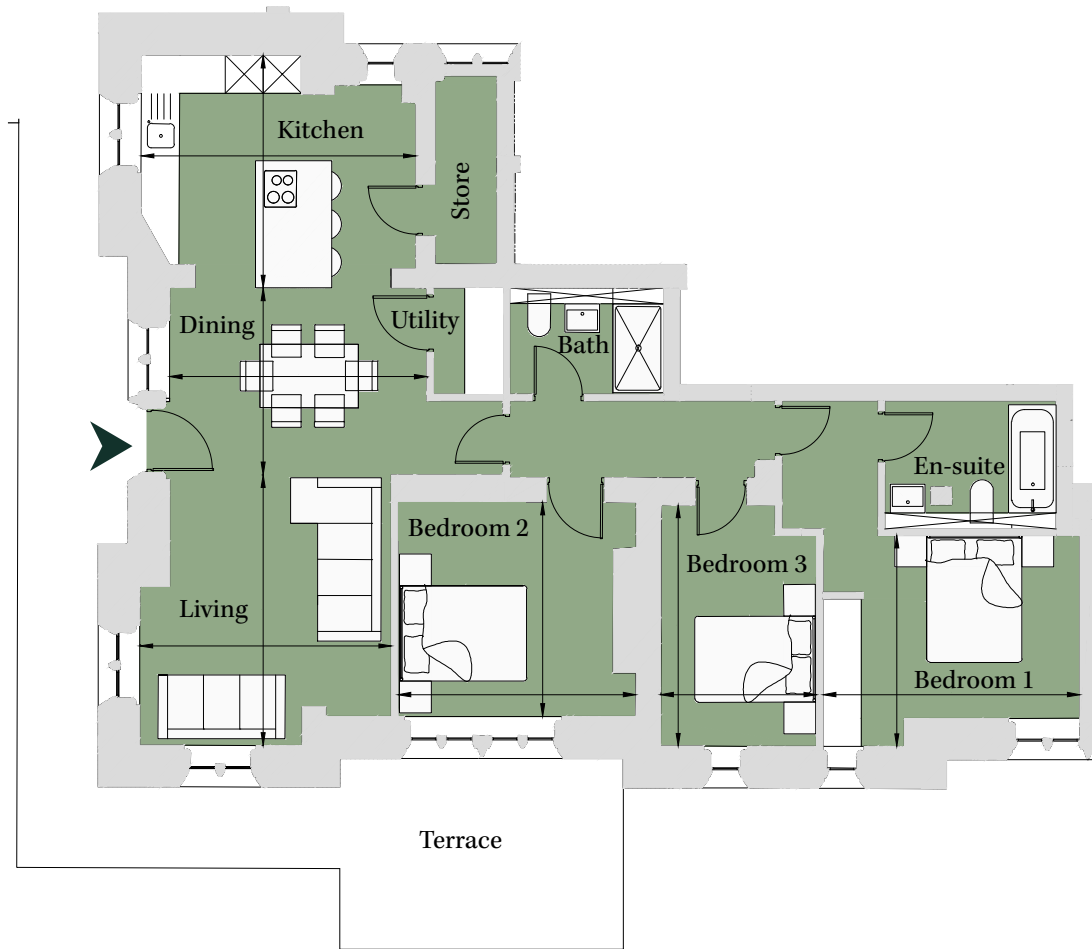
PLOT JA03
3 Bedroom Apartment

Lower Ground
Total area 1,153 sq ft (107.1 sq m)

Living	14' x 13'	(4.25m x 3.96m)
Dining	9' 8" x 13' 4"	(2.94m x 4.05m)
Kitchen	12' x 14' 2"	(3.66m x 4.32m)
Bedroom 1	10' 11" x 13' 3"	(3.32m x 4.04m)
Bedroom 2	11' 1" x 12' 4"	(3.37m x 3.74m)
Bedroom 3	12' 5" x 8' 1"	(3.79m x 2.45m)



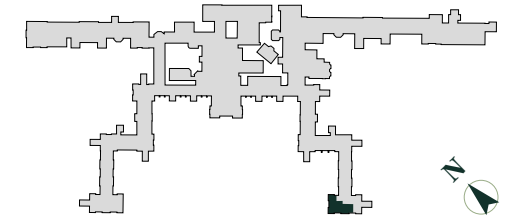
Site Location Plan



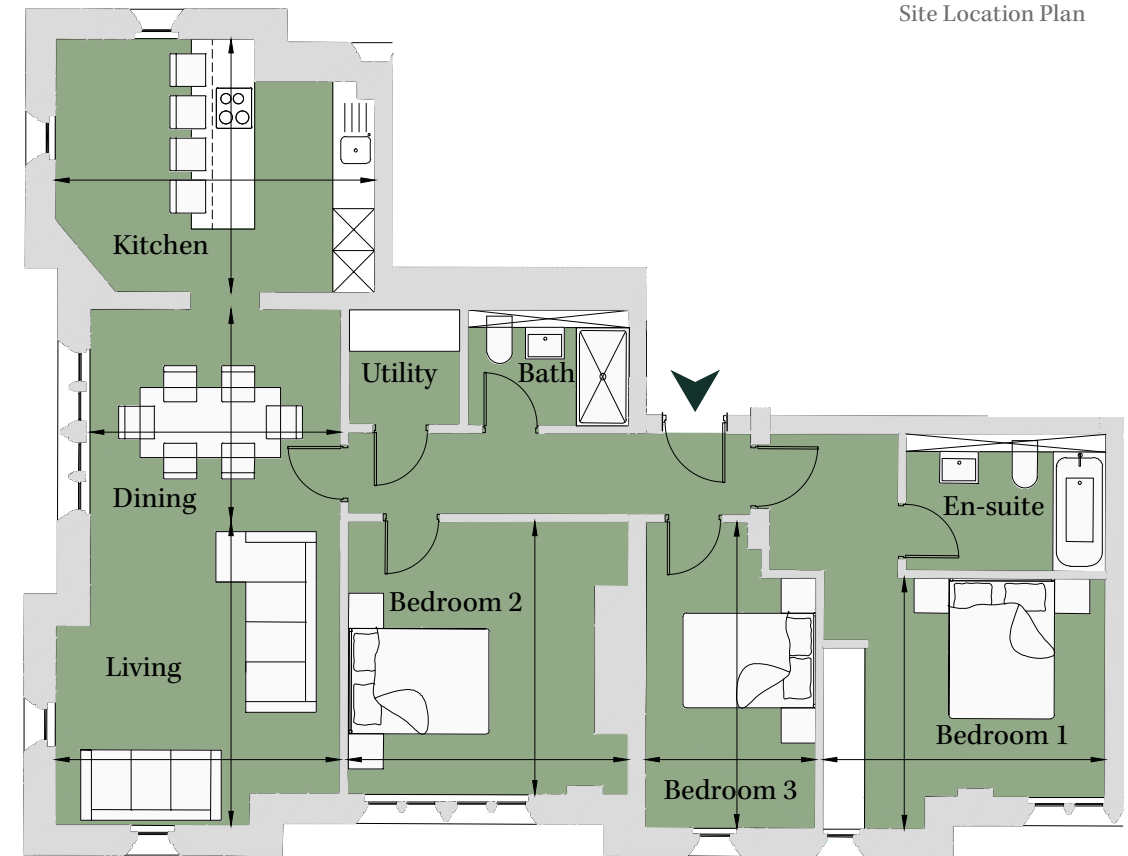
PLOT JA14
3 Bedroom Apartment

Second Floor
Total area 1,164 sq ft (108.2 sq m)

Living	14' 2" x 13' 4"	(4.32m x 4.05m)
Dining	9' 11" x 11' 9"	(3.02m x 3.57m)
Kitchen	11' 10" x 14' 11"	(3.60m x 4.55m)
Bedroom 1	11' 9" x 13' 2"	(3.58m x 4.01m)
Bedroom 2	12' 9" x 13' 1"	(3.88m x 3.99m)
Bedroom 3	14' 4" x 8'	(4.36m x 2.42m)



Site Location Plan



PLOT LU11
3 Bedroom Apartment

First/Second/Third Floor
Total area 1,486 sq ft (138 sq m)

Living	15' 7" x 10' 11"	(4.75m x 3.33m)
Dining	9' 6" x 18' 8"	(2.89m x 5.68m)
Kitchen	10' 3" x 12' 4"	(3.12m x 3.74m)
Bedroom 1	9' 11" x 9' 2"	(3.02m x 2.78m)
Bedroom 2	10' 2" x 12' 7"	(3.09m x 3.82m)
Bedroom 3	10' 2" x 9'	(3.10m x 2.73m)

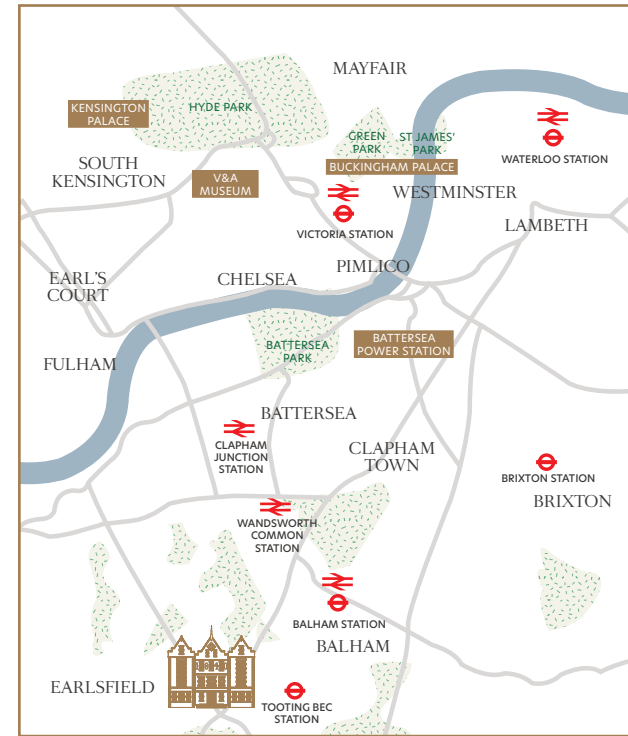
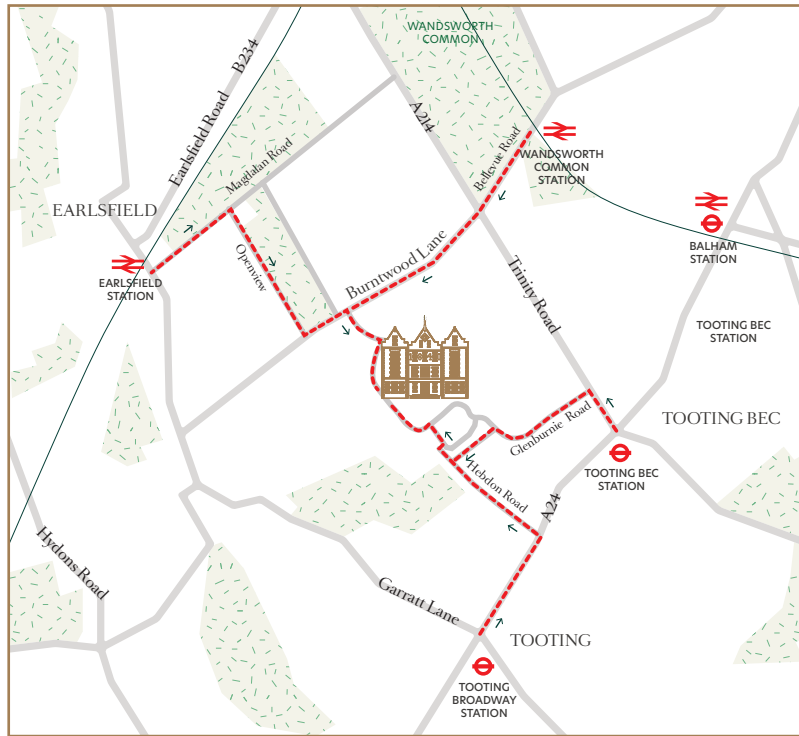




The 1840 Sales Suite

Diana House, 2 Holt Gardens
London SW17 7DJ

Telephone: 020 3993 3102
Email: The1840@cityandcountry.co.uk
Web address: cityandcountry.co.uk/The1840



Entrance to Sales Suite is from Burntwood Lane.
Please use postcode SW17 7DJ.

CHERISHING
HERITAGE
CREATING THE
FUTURE



DISCLAIMER. CGIs are indicative only. Photography is indicative only and of other City & Country Show Homes. Travel times sources from tfl.gov.uk, Google maps, and National Rail. Please be aware that the information contained in this document is indicative and intended to act as a guide only to the finished product and the properties available. Due to the City & Country policy of continual improvement, the finished product may vary from the information provided and City & Country reserves the right to amend the specification. The contents herein shall not form any part of any contract or be a representation including such contract. These properties are offered subject to availability. Applicants are advised to contact the appointed agents to ascertain the availability of any particular type of property. These particulars should not be relied upon as statements of fact or representation and applicants must satisfy themselves as to their correctness. The 1840, St George's Gardens is a marketing name and does not form a part of the postal address. This development includes communal land and/or shared facilities. A management company will be set up by City & Country to ensure that these areas are continually managed to a high standard. Product related images contained within this brochure are from other City & Country developments and do not necessarily relate exactly to the specification of The 1840. Produced May 2021.



CITY & COUNTRY

Heritage homes in the heart of South West London

cityandcountry.co.uk