

DASH

HOXTON

TAILOR-MADE BY



COUNTRYSIDE

Places People Love

CUT A DASH HOXTON

DASH is a boutique collection of 47 one and two bedroom luxury apartments and three bedroom duplexes. They offer a perfect blend of contemporary elegance with on-trend features.

DASH takes its name from nearby Haberdasher Street, so called after the Worshipful Company of Haberdashers, one of the great twelve Livery Companies of London. Taking inspiration from the past, the homes at DASH are designed to the highest standard, down to the smallest details.

An architect-designed communal garden is DASH's focal point, while a stylish roof terrace provides another space where neighbours can gather.

These homes are an oasis of tranquility creating a welcome retreat from the eclectic hustle and bustle of nearby Shoreditch.

In such relaxed village-like surroundings it's easy to forget how close you are to London's key hotspots. Hoxton Square and Pitfield Street offer a host of unbeatable amenities on your doorstep, but just down the road is London's tech heart, 'Silicon Roundabout' at Old Street, and it is just a short straight-line walk into Moorgate and London's world-leading financial district.

Need to travel further afield? That's easy too. A home at DASH comes with a 12-month car club subscription.

DASH is brought to you by Countryside – experts in creating places people love and homes designed just for you.





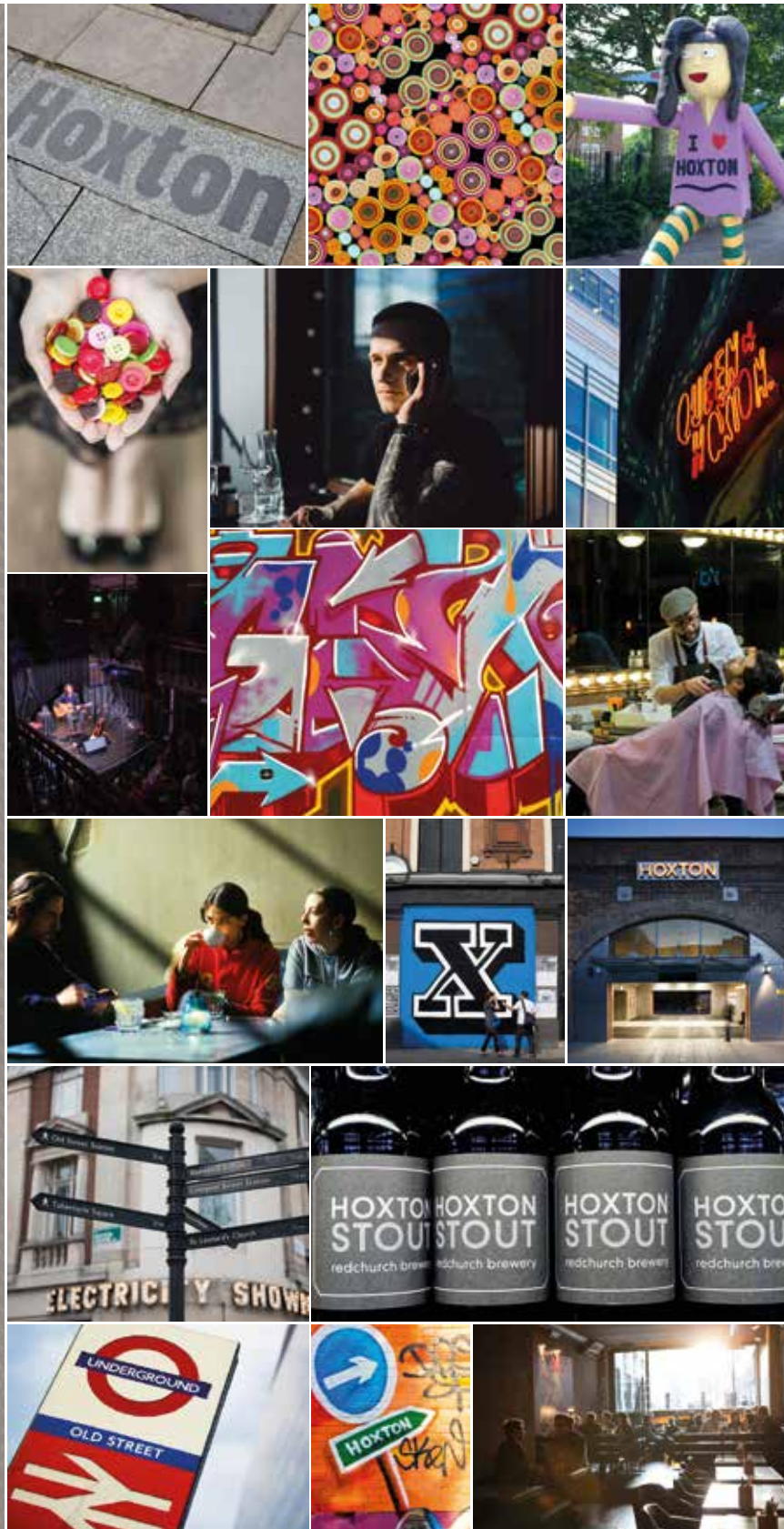
Computer generated image of DASH is for illustrative purposes only

DASH ABOUT HOXTON

Hoxton is synonymous with a laid back creative vibe and is equally a destination for fun at the weekends as it is a hub of activity during the week. Living in DASH will give you ready access to the next Hoxton invention, whether it's a fresh twist on an old cuisine, a new luxury shave, or a wild flavoured beer that grabs your attention.

HOXTON SQUARE >

This square has been home to many a tribe in the last twenty years, with each of them leaving their mark. The Young British Artists, DJs, designers and musicians made it theirs in the 90s, and more recently the tech incubator community has moved in. It's a truly social square with plenty of bars, clubs and cafés to choose from.





LIVE HOXTON

THE FABRIC OF HOXTON LIFE

SHOREDITCH HOUSE shoreditchhouse.com

Shoreditch House is a popular members' club and hotel in a converted east London warehouse. Members come here to meet, eat, and drink, and to take advantage of the rooftop pool, Cowshed Spa, and gym. The laid-back hospitality and design ethic at Shoreditch House have inspired a multitude of copycat venues. Mixing modern with vintage has become quintessential Shoreditch.

REDCHURCH STREET

If you love design, luscious products, unique coffee shops and on-trend eateries, Redchurch Street is the destination for you. Australian beauty brand Aesop and clothes brand A.P.C. both have stores here, showing just how much of a destination it is. But you'll also find quirkier unexpected stores including Labour and Wait, that sells utilitarian home goods, and Finnish lifestyle brand Klaus Haapaniemi & Co. Both offer distinct and colourful products to adorn your home.

STREET FOOD GALORE streetfeast.com 100restaurants.co.uk

Street Feast's philosophy is transforming derelict and disused spaces into unique eating and drinking environments and Dinerama is the Street Feast everyone's talking about. It's the Shoreditch street food arena that offers food, drinks, and grooves five nights a week from Wednesday to Sunday.

But if you want to catch some international tastes on the doorstep to DASH, then 100 Hoxton, on Hoxton Street, is the place to head. They offer small, simple sharing plates drawing on Asian flavours, spices and ingredients, in a laid-back environment.

FIVE STAR COOL nobuhotelshoreditch.com acehotel.com/london thehoxton.com thecurtain.com

Just in case you need extra evidence of Hoxton being a hip destination, Nobu invites guests to enjoy a world of experiential luxury with Asian-inspired and London-infused sights, sounds and scents, while Ace entices you to a place where art, design, culinary innovation, culture and tech gather.

The Curtain is another fantastic five-star hotel that contains restaurants, a live music venue and members club. The Hoxton, of course, is the original boutique hotel in this part of London, a destination for international visitors, or a place to set up camp with your laptop.

HOT AND SPORTY fiercegrace.com sneakersnstuff.com

Yoga studio Fierce Grace combines the latest heat, oxygenation, and climate control technology with a wide range of yoga classes to get you yoga fit. The studio made its name in hot yoga, but if making shapes in heat sounds a little too strenuous, you can always opt for candle lit yoga with a meditation soundtrack. If running is more your thing, or even just looking good in the latest amazing trainers, then head to Swedish store Sneakersnstuff on Shoreditch High Street. Big brands and new trainer brands are ready and waiting for you.

SPOILT FOR FOOD bratrestaurant.com

Not long opened, Brat is already a destination for fashionistas and Shoreditch creatives who love to eat out. The restaurant offers a northern Spanish menu cooked over an open wood fire, incorporating the distinct flavours of anchovies and oysters roasted with seaweed. The first solo restaurant from award-winning Welsh chef Tomos Parry, Brat is at 4 Redchurch Street. The place to be and be seen following an afternoon shopping.

SPITALFIELDS MARKET oldspitalfieldsmarket.com

Slightly further away is Spitalfields Market, home to a carefully selected group of traders, craftspeople, artists, and independent retailers. Together they provide a refreshing antidote to the high street with their unique range of products to experience and buy. This is a great place to bring friends from outside of London. Meet them off the train at Liverpool Street Station and let them wander around the many treats on offer, unhindered by traffic and entertained by the diverse collection of people that gather in the old market square.

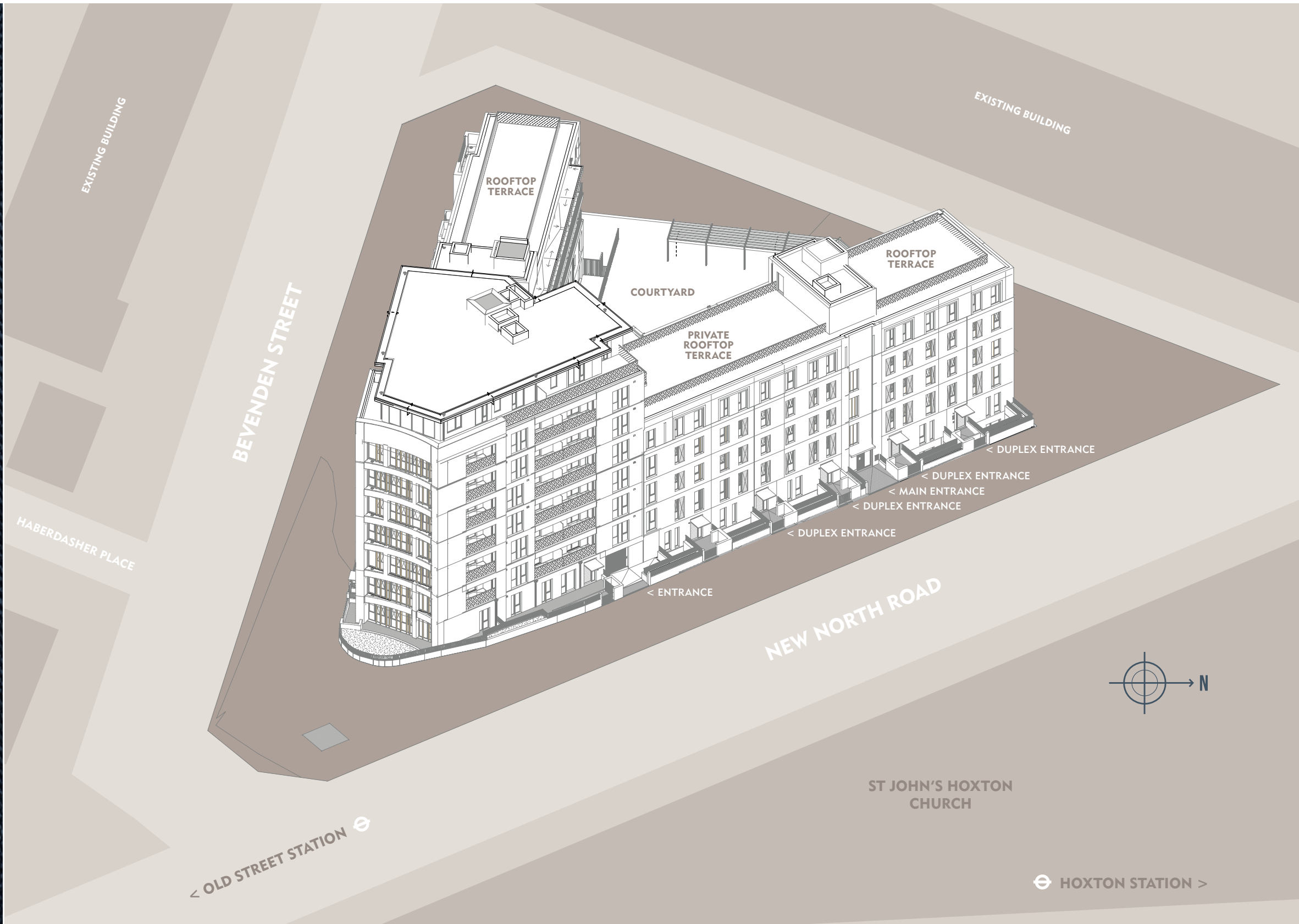
DASH AROUND LONDON



Journey times via Old Street Station; source: tfl.
Distances sourced via Googlemaps.

DASH SITE PLAN

Bevenden Street and New North Road are pleasantly quiet streets to live on, just a few minutes walk from the buzz of Hoxton. The corner location, gives DASH its distinctive shape as well as views on all sides and ample space for the communal garden.



DASH AWAY FROM THE HUSTLE AND BUSTLE

COURTYARD

Breathing space is a must in a bustling capital city, which is why DASH has its own communal garden as well as a rooftop terrace. Available to all residents, this courtyard is a gorgeous place to stop, a lovely welcome home, and the hub of DASH properties.



Computer generated image of DASH's courtyard is for illustrative purposes only

DASH TO THE TOP

ROOFTOP TERRACE

High above the street and overlooking treetops, the rooftop terrace in DASH is a relaxing place to gather with friends, dine alfresco, or start a sunny day. Every resident has access, making it the perfect place to become friends with your neighbours.



Computer generated image of DASH's rooftop terrace is for illustrative purposes only

DASH INSIDE

COMMUNAL ENTRANCE

The glass-fronted communal entrance exemplifies the simple, contemporary design approach used in every part of DASH. Elegance and exquisite details have been selected over design fads and fashion gimmicks.

When you're always on the move and forever ordering via the internet, an electronic concierge is the dependable friend you need to receive and dispatch your packages.

Every property in DASH has access to an electronic postal collection system provided by Bringme. Your Bringme Box allows you to return, send, hand over and exchange things remotely and securely, 24-7.



Computer generated image of DASH's entrance is for illustrative purposes only

DASH HOME

FIND YOUR OWN QUIET PLACE IN HOXTON

When you need a calming retreat from the excitement of Hoxton's vibrant lifestyle, escape to DASH, tucked away in a tranquil, green area off Pitfield Street, a space that's made for you!



Computer generated image of DASH is for illustrative purposes only

ABOUT COUNTRYSIDE



COUNTRYSIDE

Places People Love

CountrySide is a leading UK home builder and urban regeneration partner. We believe that where we live matters. We're passionate about creating places where people aspire to live, where they feel a true sense of belonging.

All our developments and homes carry a signature style and character, designed to work for the way people live today with materials that reflect our commitment to quality. Our exacting standards and sustainable credentials combine to create places that will stand the test of time. As a result we hold more Housing Design Awards than any other developer.

From the character of the homes we build to the planning of environments and the unique detailing of the landscape, our creative approach to place making creates places where people feel at home, providing a greater sense of belonging, spirit of neighbourhood and quality of life for everyone who lives in and around our developments.

We create places people love.

DASH-HOXTON.CO.UK
0203 9531 616

OUR CUSTOMER SERVICE

THE CUSTOMER SERVICE TEAM AT COUNTRYSIDE IS COMMITTED TO PROVIDING YOU, OUR CUSTOMERS, WITH QUALITY HOMES.

The whole team is working to achieve one common goal: to ensure that you are satisfied and happy with your new home, from the moment that you make your reservation, to the day you move in and beyond. No matter who you are dealing with, or what queries, questions or complaints you may have, you can be confident that our people and procedures will adhere to the terms of our Charter and the 'Consumer Code for Home Builders'. Copies of the 'Consumer Code for Home Builders' are available from our sales offices and via our 'New Homes' website; a copy (also identifying where further guidance can be found) will always be provided to you upon reservation.

Our customer care begins at the outset, with our trained Sales Consultants who offer guidance on the legal process involved in buying a home and help with arranging mortgage finance through independent financial consultants.

Every home at DASH carries our commitment to quality and improvement. You have the added assurance of every home carrying the NHBC Warranty (Buildmark) against structural defects for a ten-year period following the date of legal completion.

Each property is quality checked and commissioned by our dedicated customer service team before handover to its new owner.

Each new owner will be invited to attend a handover of their new home with a member of the customer service team.

We adhere to the Consumer Code for Home Builders ensuring all new home buyers are treated fairly at all times, are given reliable information, know what service levels to expect and know how to access the dispute resolution scheme.



Images depict other CountrySide Developments Feature 17 and The Assembly.

WHY BUY NEW?

REPLACING A PREVIOUS OWNER'S IDEA OF 'INTERIOR DESIGN' CAN BE A COSTLY AND TIME-CONSUMING PROCESS. MOVE INTO A BRAND NEW HOME ON THE OTHER HAND, AND YOU HAVE THE PERFECT BLANK CANVAS JUST WAITING FOR YOU TO MAKE YOUR HOME YOUR OWN!

NO NASTY SURPRISES

Buy a new home from us and there'll be no nasty surprises or extra maintenance costs waiting for you and you'll have the peace of mind of a 10-year NHBC guarantee. Buy a second-hand home, and who knows what you could be faced with?

BUILDING A BETTER FUTURE

We create quality, eco-friendly and sustainable homes in the best locations. Our outstanding range of new homes is designed for modern living with lower environmental impact and running costs, and low maintenance. These provide compelling reasons to choose a new home.

www.consumercodeforhomebuilders.com
www.nhbc.co.uk



Computer generated image duplex 01 living area



Computer generated image apartment 14 master bedroom



Computer generated image duplex 01 hallway and stairs



Computer generated image of a typical apartment bathroom

Computer generated images are for illustrative purposes only

DASH TO VISIT

HOW TO FIND DASH

There are many ways to get to DASH.

OLD STREET STATION

Your nearest Underground station is Old Street. The City branch of the Northern Line runs from here. It's just two stops from Kings Cross and the Eurostar from St Pancras International, two from Bank, and five from Camden. Also at Old Street The Great Northern train line comes in from the suburbs of London and towns around Hertfordshire, including Stevenage.

WALKING FROM OLD STREET STATION

Leave Old Street Station using Exit 1 and take the City Road North (East Side) exit. Take a slight right onto East Street and then right onto Beviden Street. DASH will be on your left as you approach the corner of Beviden Street and New North Road.

HOXTON AND SHOREDITCH STATIONS

Hoxton Station (0.4 miles) and Shoreditch High Street (0.8 miles) are both train stations close to DASH with London Overground services running on the extended East London Line.

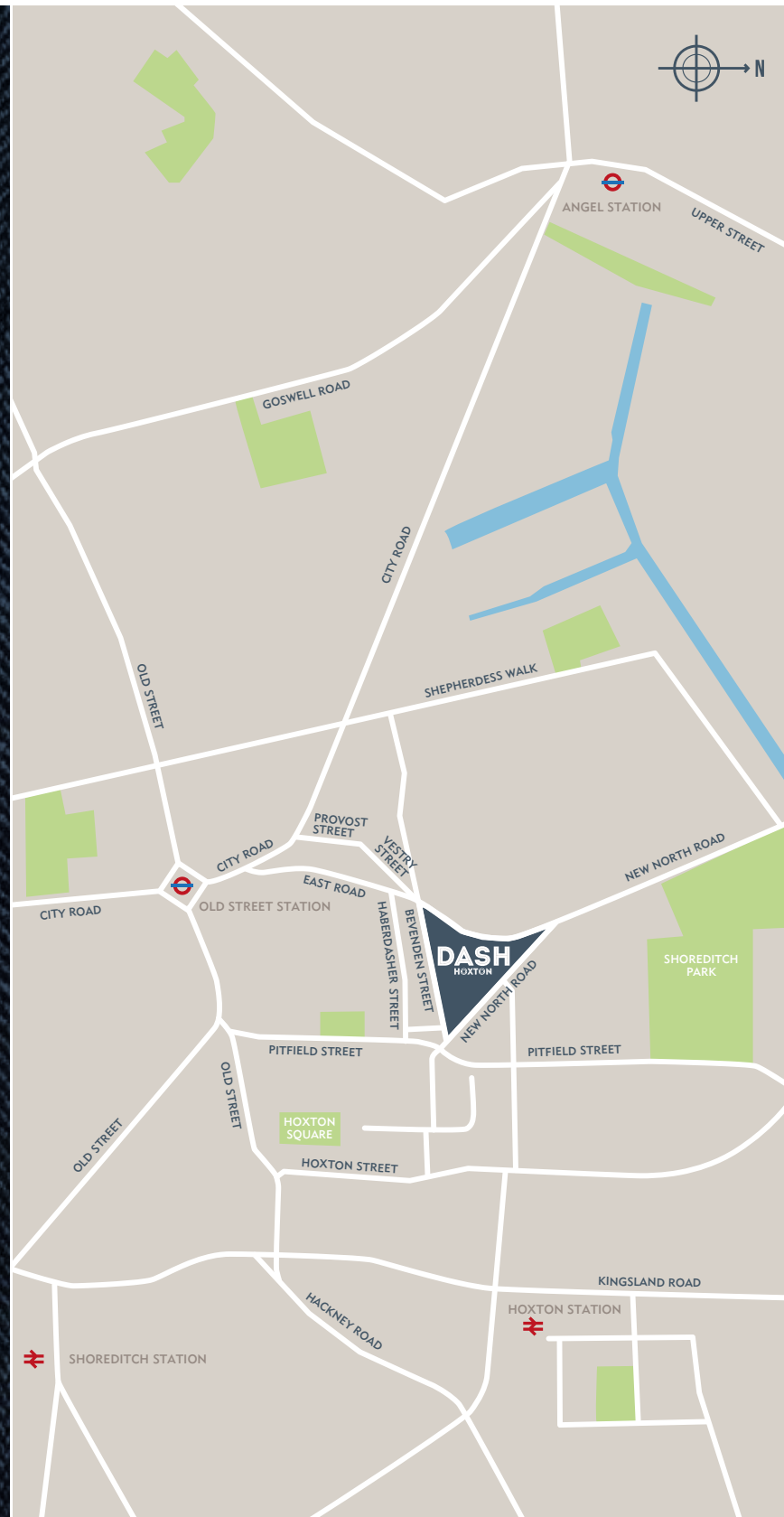
BUS ROUTES

There are many bus routes that pass Old Street station coming from all areas of London. These include the 21, 43, 55, 76, 135, 141, 205, 214, 243, 271, 67, 149.

BY CAR FROM CENTRAL LONDON

Follow the A5201 (Clerkenwell Road) East, at the Old Street roundabout take the first exit onto City Road/A501 and then right onto Provost Street (A1200). Turn half right onto Beviden Street, DASH will be found on your left as you approach the corner of Beviden Street and New North Road.

For your Sat Nav use N1 6JA.



TAILOR-MADE BY



COUNTRYSIDE

Places People Love

