

THE LANE

TOTTENHAM

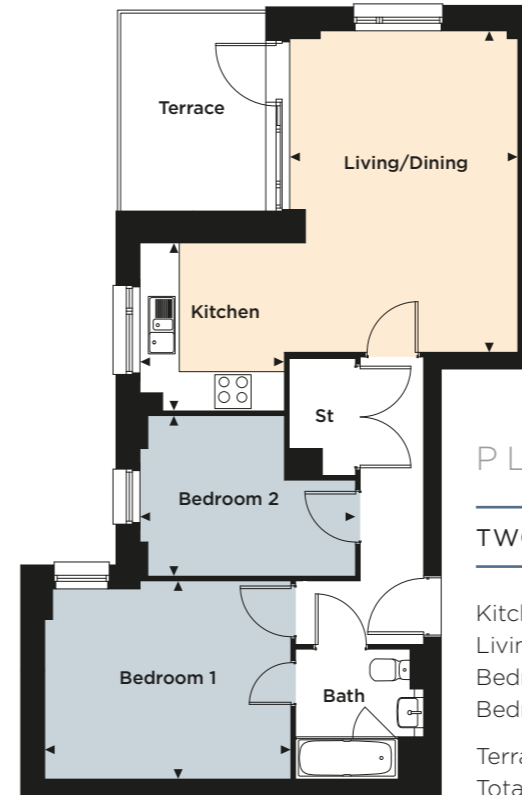
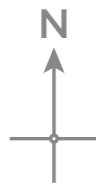


THE SHERWOOD APARTMENTS

A COLLECTION OF 1, 2 & 3 BEDROOM
APARTMENTS ON WHITE HART LANE

Fairview[®]
NEW HOMES Ltd.

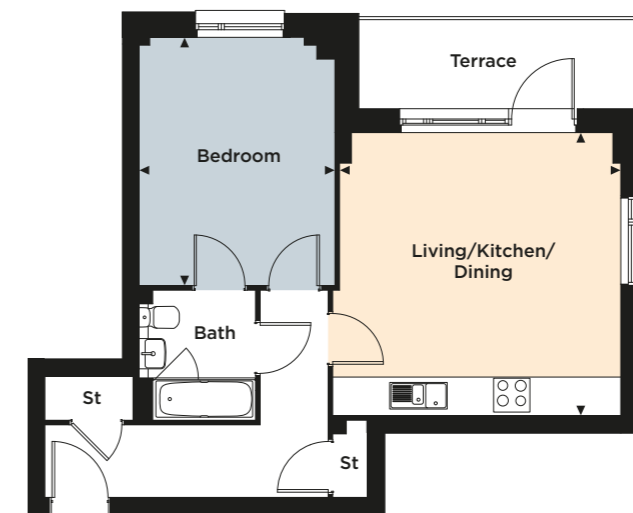
DEVELOPMENT LAYOUT



PLOT 1

TWO BEDROOM APARTMENT WITH TERRACE

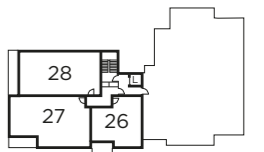
Kitchen	2.780m x 2.390m	9'1" x 7'10"
Living/Dining	5.315m x 3.773m	17'5" x 12'5"
Bedroom 1	4.080m x 3.279m	13'5" x 10'9"
Bedroom 2	3.565m x 2.657m	11'8" x 8'9"
Terrace Area	7.8 sq m	84 sq ft
Total Area	62.6 sq m	674 sq ft



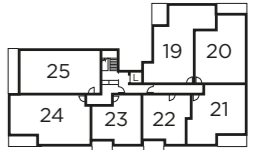
PLOT 2

ONE BEDROOM APARTMENT WITH TERRACE

Living/Kitchen/Dining	4.763m x 4.680m	15'8" x 15'4"
Bedroom	4.105m x 3.238m	13'6" x 10'7"
Terrace Area	7.0 sq m	75 sq ft
Total Area	50.2 sq m	540 sq ft



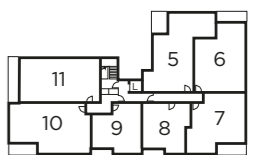
FOURTH FLOOR



THIRD FLOOR



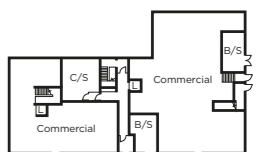
SECOND FLOOR



FIRST FLOOR



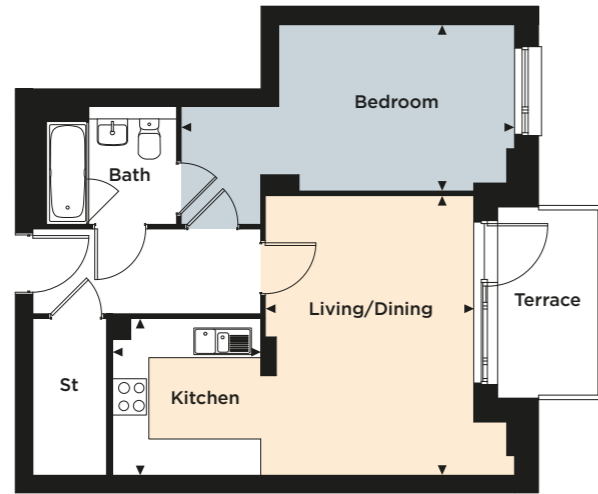
GROUND FLOOR



LOWER GROUND FLOOR

The development layout and floor plans are intended to give a general indication of the proposed development and are not to scale. Please check with your Sales Advisor for more details of your selected plot. Computer generated images are for illustrative purposes only. S/S Sub Station C/S Cycle Store B/S Bin Store St Store

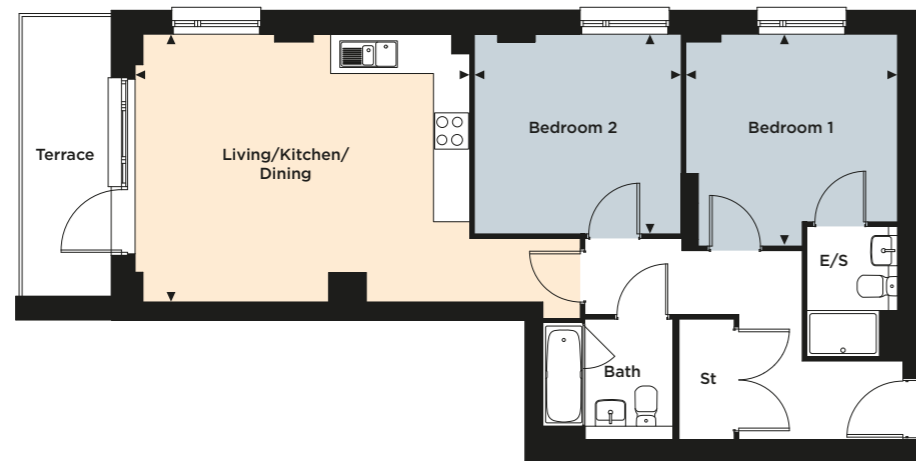
◀ Denotes where dimensions are taken from, a wall to wall tolerance of +/- 5% is allowed. External finishes and windows may vary on certain plots, please check with your Sales Advisor.



PLOT 3

ONE BEDROOM APARTMENT WITH TERRACE

Kitchen	2.595m x 2.449m	8'6" x 8'0"
Living/Dining	4.623m x 3.447m	15'2" x 11'4"
Bedroom	5.513m x 2.750m	18'1" x 9'0"
Terrace Area	5.4 sq m	58 sq ft
Total Area	51.5 sq m	554 sq ft



PLOT 4

TWO BEDROOM, TWO BATHROOM APARTMENT WITH TERRACE

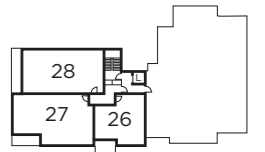
Living/Kitchen/Dining	5.533m x 4.426m	18'2" x 14'6"
Bedroom 1	3.503m x 3.500m	11'6" x 11'6"
Bedroom 2	3.420m x 3.314m	11'3" x 10'10"
Terrace Area	7.4 sq m	80 sq ft
Total Area	70.3 sq m	757 sq ft



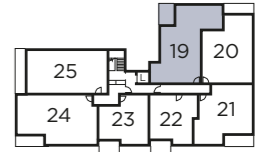
PLOTS 5, 12 & 19

THREE BEDROOM, TWO BATHROOM APARTMENT WITH BALCONY

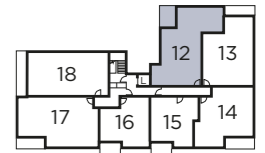
Living/Kitchen/Dining	7.300m x 3.810m	23'11" x 12'6"
Bedroom 1	6.310m x 3.145m	20'8" x 10'4"
Bedroom 2	5.123m x 3.410m	16'10" x 11'2"
Bedroom 3	5.123m x 2.555m	16'10" x 8'5"
Balcony Area	8.4 sq m	90 sq ft
Total Area	88.2 sq m	949 sq ft



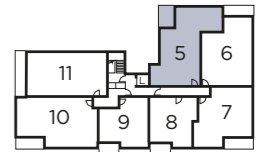
FOURTH FLOOR



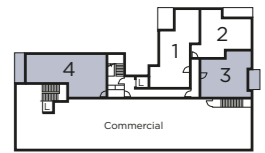
THIRD FLOOR



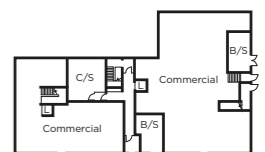
SECOND FLOOR



FIRST FLOOR



GROUND FLOOR



LOWER GROUND FLOOR

S/S Sub Station C/S Cycle Store B/S Bin Store St Store

◀ Denotes where dimensions are taken from, a wall to wall tolerance of +/- 5% is allowed. External finishes and windows may vary on certain plots, please check with your Sales Advisor.



PLOTS 6, 13 & 20

TWO BEDROOM, TWO BATHROOM APARTMENT WITH BALCONY

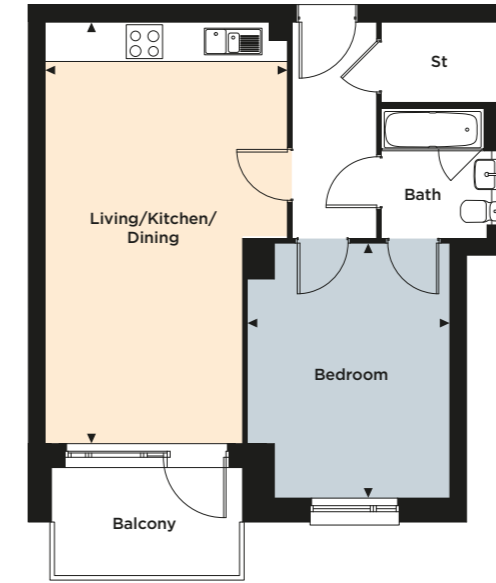
Kitchen	2.650m x 2.430m	8'8" x 8'0"
Living/Dining	4.435m x 4.295m	14'7" x 14'1"
Bedroom 1	4.198m x 3.200m	13'9" x 10'6"
Bedroom 2	4.198m x 3.150m	13'9" x 10'4"
Balcony Area	7.0 sq m	75 sq ft
Total Area	76.9 sq m	828 sq ft



PLOTS 7, 14 & 21

TWO BEDROOM, TWO BATHROOM APARTMENT WITH BALCONY

Living/Kitchen/Dining	6.376m x 4.350m	20'11" x 14'3"
Bedroom 1	6.115m x 4.541m	20'1" x 14'11"
Bedroom 2	4.368m x 3.360m	14'4" x 11'0"
Balcony Area	8.0 sq m	86 sq ft
Total Area	72.3 sq m	778 sq ft



PLOTS 8, 15 & 22

ONE BEDROOM APARTMENT WITH BALCONY

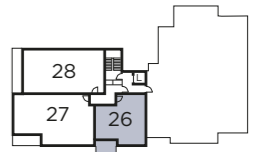
Living/Kitchen/Dining	6.968m x 4.006m	22'10" x 13'2"
Bedroom	4.215m x 3.350m	13'10" x 11'0"
Balcony Area	5.8 sq m	62 sq ft
Total Area	52.3 sq m	563 sq ft



PLOTS 9, 16, 23 & 26

ONE BEDROOM APARTMENT WITH BALCONY

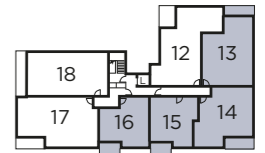
Living/Kitchen/Dining	6.083m x 4.535m	19'11" x 14'11"
Bedroom	4.278m x 3.200m	14'0" x 10'6"
Balcony Area	5.8 sq m	62 sq ft
Total Area	52.5 sq m	565 sq ft



FOURTH FLOOR



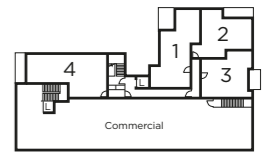
THIRD FLOOR



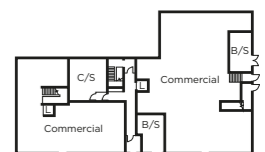
SECOND FLOOR



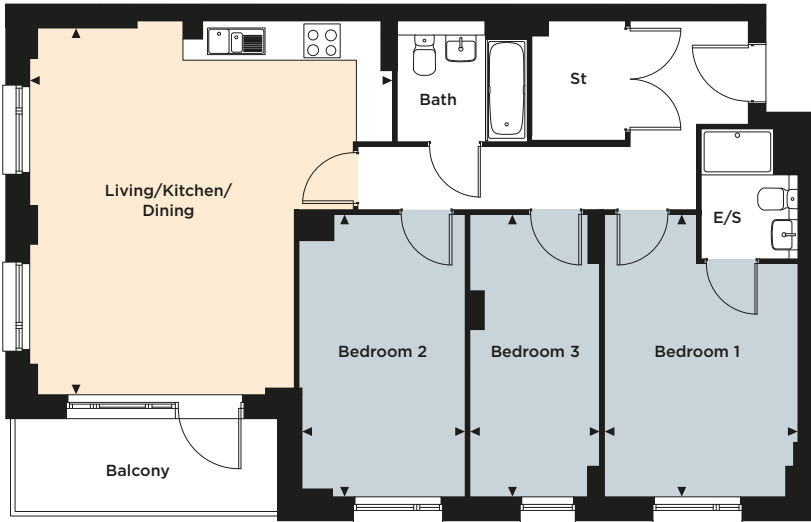
FIRST FLOOR



GROUND FLOOR



LOWER GROUND FLOOR

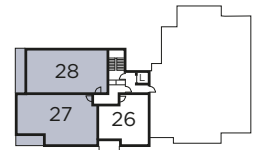


PLOTS 10, 17, 24 & 27

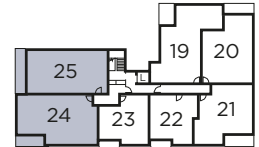
THREE BEDROOM, TWO BATHROOM APARTMENT WITH BALCONY

Living/Kitchen/Dining	6.063m x 6.000m	19'11" x 19'8"
Bedroom 1	4.667m x 3.200m	15'4" x 10'6"
Bedroom 2	4.667m x 2.750m	15'4" x 9'0"
Bedroom 3	4.667m x 2.150m	15'4" x 7'1"
Balcony Area	8.0 sq m	86 sq ft
Total Area	90.5 sq m	974 sq ft

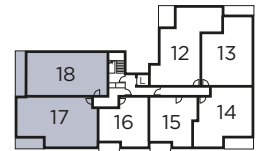
BLOCK PLANS



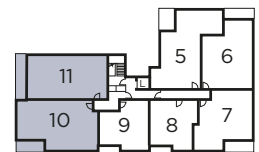
FOURTH FLOOR



THIRD FLOOR



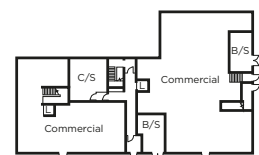
SECOND FLOOR



FIRST FLOOR



GROUND FLOOR



LOWER GROUND FLOOR



PLOTS 11, 18, 25 & 28

THREE BEDROOM, TWO BATHROOM APARTMENT WITH BALCONY

Living/Kitchen/Dining	6.828m x 3.943m	22'5" x 12'11"
Bedroom 1	4.780m x 2.775m	15'8" x 9'1"
Bedroom 2	3.475m x 3.410m	11'5" x 11'2"
Bedroom 3	4.093m x 2.150m	13'5" x 7'1"
Balcony Area	10.7 sq m	115 sq ft
Total Area	87.1 sq m	938 sq ft

S/S Sub Station C/S Cycle Store B/S Bin Store St Store

◀ Denotes where dimensions are taken from, a wall to wall tolerance of +/- 5% is allowed. External finishes and windows may vary on certain plots, please check with your Sales Advisor.