

# THE LANE

TOTTENHAM



## THE TURNER APARTMENTS

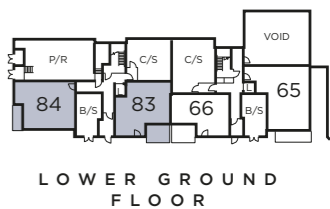
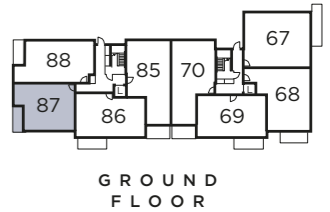
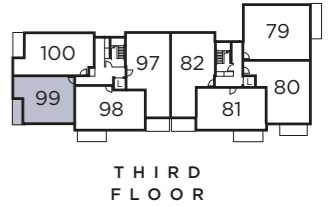
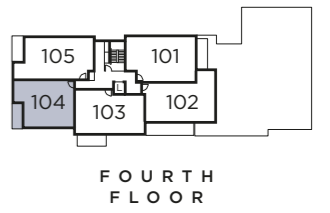
A COLLECTION OF 1, 2 & 3 BEDROOM  
APARTMENTS ON WHITE HART LANE

**Fairview**<sup>®</sup>  
NEW HOMES Ltd.

# DEVELOPMENT LAYOUT



## BLOCK PLANS



### PLOT 83

#### ONE BEDROOM APARTMENT WITH TERRACE

Living/Kitchen/Dining	6.489m x 4.423m	21'3" x 14'6"
Bedroom	5.990m x 2.890m	19'8" x 9'6"
Terrace Area	9.8 sq m	105 sq ft
<b>Total Area</b>	<b>61.3 sq m</b>	<b>660 sq ft</b>



### PLOTS 84, 87, 91, 95, 99 & 104

#### TWO BEDROOM, TWO BATHROOM APARTMENT WITH TERRACE/BALCONY

Living/Kitchen/Dining	5.698m x 3.975m	18'8" x 13'0"
Bedroom 1	3.698m x 3.302m	12'2" x 10'10"
Bedroom 2	3.975m x 2.150m	13'0" x 7'1"
Terrace/Balcony Area	6.0 sq m	65 sq ft
<b>Total Area</b>	<b>64.0-64.5 sq m</b>	<b>689-694 sq ft</b>

The development layout and floor plans are intended to give a general indication of the proposed development and are not to scale. Please check with your Sales Advisor for more details of your selected plot. Computer generated images are for illustrative purposes only.  
S/S Sub Station C/S Cycle Store B/S Bin Store St Store

◀ Denotes where dimensions are taken from, a wall to wall tolerance of +/- 5% is allowed. External finishes and windows may vary on certain plots, please check with your Sales Advisor.

BLOCK PLANS



PLOTS 85, 89, 93 & 97

TWO BEDROOM, TWO BATHROOM  
APARTMENT WITH BALCONY

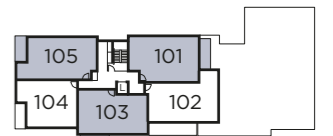
Living/Kitchen/Dining	7.963m x 4.873m	26'2" x 16'0"
Bedroom 1	3.650m x 3.350m	12'0" x 11'0"
Bedroom 2	3.943m x 3.302m	12'11" x 10'10"
Balcony Area	7.1 sq m	76 sq ft
<b>Total Area</b>	<b>76.4 sq m</b>	<b>822 sq ft</b>



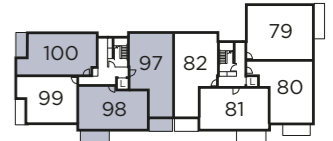
PLOTS 88, 92, 96, 100 & 105

TWO BEDROOM, TWO BATHROOM  
APARTMENT WITH TERRACE/BALCONY

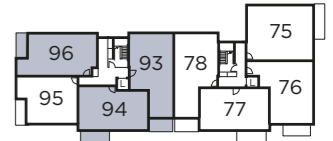
Living/Kitchen/Dining	6.575m x 6.521m	21'7" x 21'5"
Bedroom 1	3.575m x 3.321m	11'9" x 10'11"
Bedroom 2	3.622m x 3.321m	11'11" x 10'11"
Terrace Area	7.0 sq m	75 sq ft
Balcony Area	7.1 sq m	76 sq ft
<b>Total Area</b>	<b>74.7 sq m</b>	<b>804 sq ft</b>



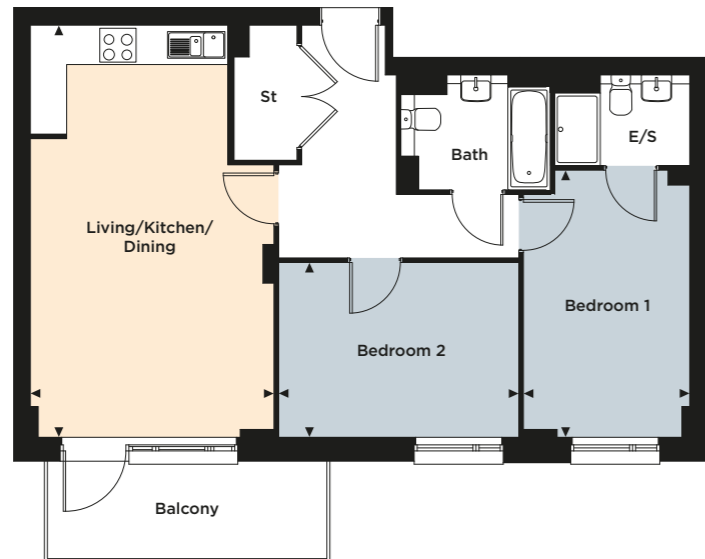
FOURTH FLOOR



THIRD FLOOR



SECOND FLOOR



PLOTS 86, 90, 94, 98 & 103

TWO BEDROOM, TWO BATHROOM  
APARTMENT WITH BALCONY

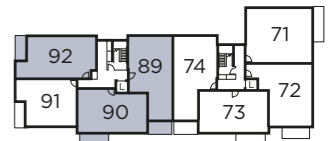
Living/Kitchen/Dining	6.812m x 4.027m	22'4" x 13'3"
Bedroom 1	4.415m x 2.750m	14'6" x 9'0"
Bedroom 2	3.973m x 2.890m	13'0" x 9'6"
Balcony Area	7.1 sq m	76 sq ft
<b>Total Area</b>	<b>70.1 sq m</b>	<b>754 sq ft</b>



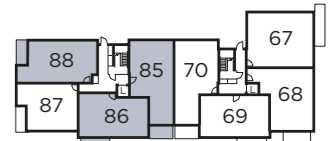
PLOT 101

TWO BEDROOM, TWO BATHROOM  
APARTMENT WITH TERRACE

Living/Kitchen/Dining	6.913m x 3.923m	22'8" x 12'10"
Bedroom 1	3.713m x 3.645m	12'2" x 12'0"
Bedroom 2	3.713m x 3.245m	12'2" x 10'8"
Terrace Area	7.5 sq m	81 sq ft
<b>Total Area</b>	<b>71.6 sq m</b>	<b>771 sq ft</b>



FIRST FLOOR



GROUND FLOOR



LOWER GROUND FLOOR

S/S Sub Station C/S Cycle Store B/S Bin Store St Store

◀ Denotes where dimensions are taken from, a wall to wall tolerance of +/- 5% is allowed. External finishes and windows may vary on certain plots, please check with your Sales Advisor.



### PLOT 102

TWO BEDROOM, TWO BATHROOM  
APARTMENT WITH BALCONY

Living/Kitchen/Dining	4.935m x 4.275m	16'2" x 14'0"
Bedroom 1	4.935m x 3.365m	16'2" x 11'0"
Bedroom 2	4.935m x 3.015m	16'2" x 9'11"
Balcony Area	14.0 sq m	151 sq ft
<b>Total Area</b>	<b>72.3 sq m</b>	<b>778 sq ft</b>

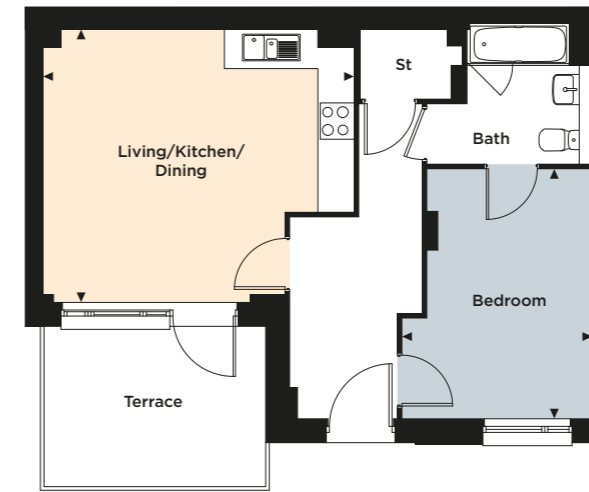


### PLOTS 65, 68, 72, 76 & 80

TWO BEDROOM, TWO BATHROOM  
APARTMENT WITH TERRACE/BALCONY

Living/Kitchen/Dining	6.685m x 4.963m	21'11" x 16'3"
Bedroom 1	5.163m x 3.350m	16'11" x 11'0"
Bedroom 2	5.163m x 3.351m	16'11" x 11'0"
Terrace Area	9.8 sq m	105 sq ft
Balcony Area	7.1 sq m	76 sq ft
<b>Total Area</b>	<b>75.8-76.3 sq m</b>	<b>816-821 sq ft</b>

Note: Bedroom 1 room size differs to plot 65



### PLOT 66

ONE BEDROOM APARTMENT WITH TERRACE

Living/Kitchen/Dining	5.145m x 4.515m	16'11" x 14'10"
Bedroom	4.133m x 3.151m	13'7" x 10'4"
Terrace Area	10.0 sq m	108 sq ft
<b>Total Area</b>	<b>50.4 sq m</b>	<b>543 sq ft</b>

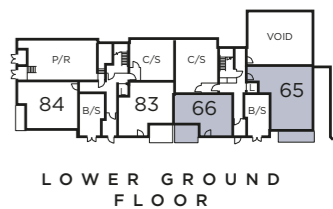
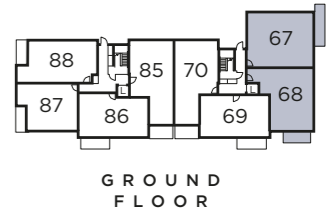
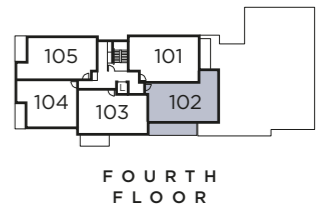


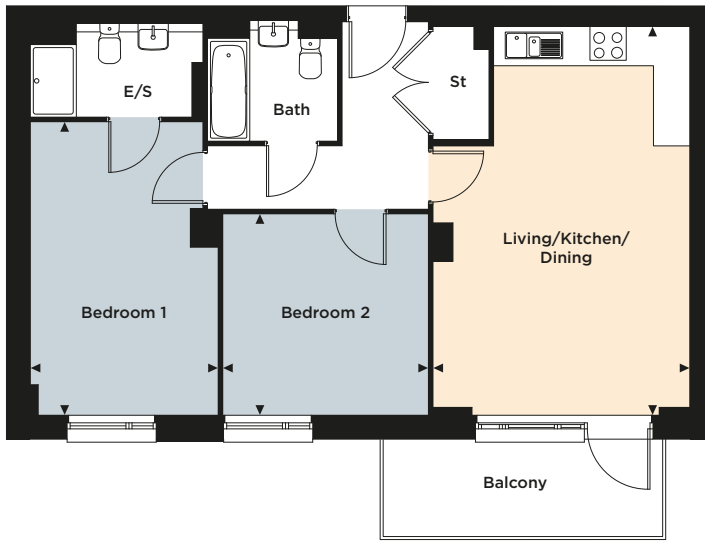
### PLOTS 67, 71, 75 & 79

THREE BEDROOM, TWO BATHROOM  
APARTMENT WITH TERRACE/BALCONY

Living/Kitchen/Dining	5.803m x 5.745m	19'0" x 18'10"
Bedroom 1	6.988m x 2.781m	22'11" x 9'1"
Bedroom 2	4.130m x 3.200m	13'7" x 10'6"
Bedroom 3	3.041m x 2.633m	10'0" x 8'8"
Terrace Area	10.4 sq m	112 sq ft
Balcony Area	8.7 sq m	94 sq ft
<b>Total Area</b>	<b>88.9 sq m</b>	<b>957 sq ft</b>

## BLOCK PLANS



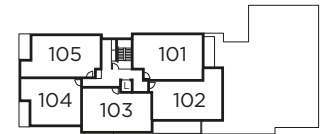


## PLOTS 69, 73, 77 & 81

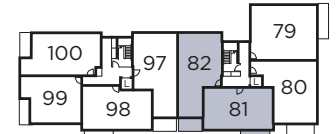
TWO BEDROOM, TWO BATHROOM  
APARTMENT WITH BALCONY

Living/Kitchen/Dining	6.428m x 4.245m	21'1" x 13'11"
Bedroom 1	4.853m x 3.105m	15'11" x 10'2"
Bedroom 2	3.400m x 3.320m	11'2" x 10'11"
Balcony Area	7.3 sq m	79 sq ft
<b>Total Area</b>	<b>70.4 sq m</b>	<b>758 sq ft</b>

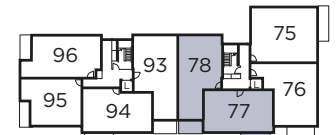
## BLOCK PLANS



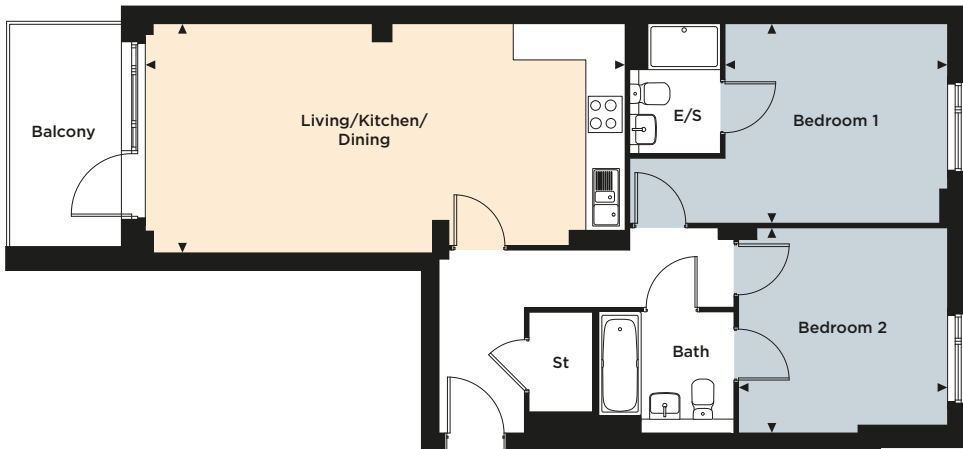
FOURTH FLOOR



THIRD FLOOR



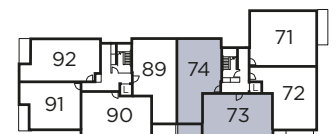
SECOND FLOOR



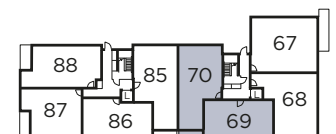
## PLOTS 70, 74, 78 & 82

TWO BEDROOM, TWO BATHROOM  
APARTMENT WITH BALCONY

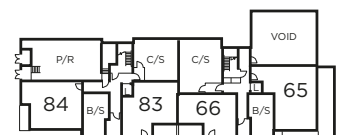
Living/Kitchen/Dining	7.933m x 3.790m	26'0" x 12'5"
Bedroom 1	3.680m x 3.300m	12'1" x 10'10"
Bedroom 2	3.470m x 3.393m	11'5" x 11'2"
Balcony Area	7.0 sq m	75 sq ft
<b>Total Area</b>	<b>75.4 sq m</b>	<b>812 sq ft</b>



FIRST FLOOR



GROUND FLOOR



LOWER GROUND FLOOR

S/S Sub Station C/S Cycle Store B/S Bin Store St Store

◀ Denotes where dimensions are taken from, a wall to wall tolerance of +/- 5% is allowed. External finishes and windows may vary on certain plots, please check with your Sales Advisor.