

FLOORPLANS

WHITE
CHAPEL



BETHNAL
GREEN

INDEX

THE COLUMBIA BUILDING	
Floorplans	3
THE ROMAN BUILDING	
Floorplans	25
THE PETTICOAT BUILDING	
Floorplans	43
Specification + Finishes	54
About Higgins Homes	57

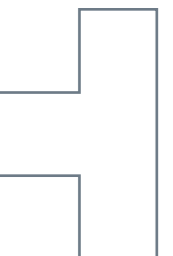
THE COLUMBIA BUILDING



THE ROMAN BUILDING



THE PETTICOAT BUILDING



THE COLUMBIA BUILDING



THE COLUMBIA BUILDING

The Columbia Building is one of four apartment blocks that make up the White + Green development. The ten storey building has 46 apartments over nine floors facing both Vallance Road and Hemming Street. These include studio suites, 1 bedroom, 2 bedroom and 3 bedroom apartments from the first to ninth floors. All benefit from cycle storage on the lower ground floor and their own balcony or terrace, either facing west over Vallance Road and Weavers Fields or east towards Hemming Street and the piazza.



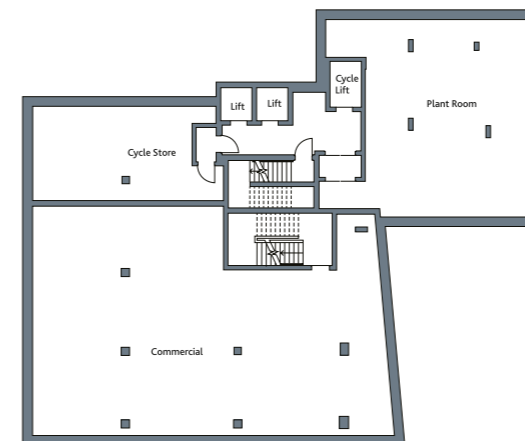
The computer generated illustration is drawn from plan and is indicative only of how the completed building will appear

SITE PLAN

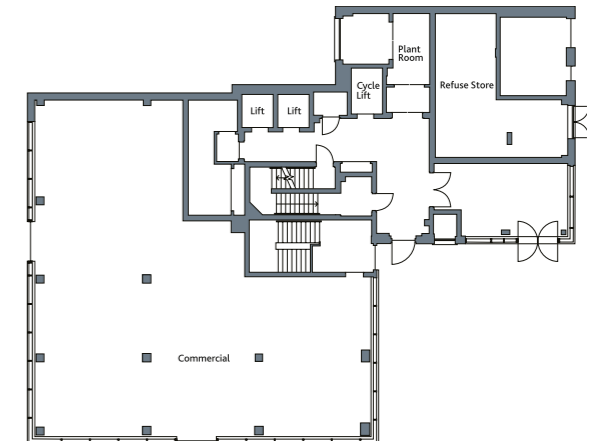


THE COLUMBIA BUILDING

LOWER GROUND FLOOR



GROUND FLOOR



KEY

▶ - ENTRANCE TO BUILDING

BUILDING D - AFFORDABLE HOUSING

Whilst these floor plans have been prepared with all due care for the convenience of the intending purchaser, the information contained here is a preliminary guide only.

THE COLUMBIA BUILDING FIRST FLOOR

- KEY**
- + 3 BEDROOM
 - + 2 BEDROOM, 2 BATHS
 - + 2 BEDROOM
 - + 1 BEDROOM
 - + STUDIO

APARTMENT A-1

Living / Dining / Kitchen	18'11" x 18'8"	5770mm x 5690mm
Bedroom	13'8" x 10'7"	4180mm x 3240mm
Bathroom		
Terrace	19'10" x 9'	6050mm x 2750mm
Total Internal Area	616 sq ft	57.2 sq m

APARTMENT A-4

Living / Dining / Kitchen	26'3" x 12'2"	8020mm x 3720mm
Bedroom 1	20'10" x 9'10"	6360mm x 2990mm
En Suite		
Bedroom 2	13'4" x 9'	4070mm x 2750mm
Bathroom		
Balcony 1	17'4" x 4'8"	5300mm x 1420mm
Balcony 2	11'5" x 4'8"	3500mm x 1420mm
Total Internal Area	884 sq ft	82.1 sq m

APARTMENT A-2

Living / Bedroom / Kitchen	19'10" x 17'6"	6060mm x 5340mm
Bathroom		
Terrace	19'10" x 9'	6050mm x 2750mm
Total Internal Area	465 sq ft	43.2 sq m

APARTMENT A-5

Living / Bedroom / Kitchen	19'5" x 17'2"	5940mm x 5230mm
Bathroom		
Balcony	15'6" x 4'8"	4730mm x 1420mm
Total Internal Area	404 sq ft	37.5 sq m

APARTMENT A-3

Living / Bedroom	18'1" x 12'5"	5520mm x 3790mm
Kitchen	9'2" x 6'3"	2800mm x 1920mm
Bathroom		
Balcony	14' x 4'8"	4280mm x 1420mm
Total Internal Area	432 sq ft	40.1 sq m

APARTMENT A-6

Living / Dining / Kitchen	23'8" x 12'9"	7210mm x 3890mm
Bedroom 1	14'8" x 9'3"	4480mm x 2820mm
Bedroom 2	11'9" x 8'	3580mm x 2450mm
Bathroom		
Balcony	27'10" x 4'3"	8500mm x 1300mm
Total Internal Area	662 sq ft	61.5 sq m

Total internal area shown excludes balcony and/or terrace



- KEY**
- T - TERRACE
 - B - BALCONY
 - W/D - WASHER / DRYER
 - W - WARDROBE
 - E/S - EN SUITE
 - S - STORE

Whilst these floor plans have been prepared with all due care for the convenience of the intending purchaser, the information contained here is a preliminary guide only

THE COLUMBIA BUILDING SECOND FLOOR

- KEY**
- + 3 BEDROOM
 - + 2 BEDROOM, 2 BATHS
 - + 2 BEDROOM
 - + 1 BEDROOM
 - + STUDIO



APARTMENT A-15

Living / Dining / Kitchen	18'11" x 18'8"	5770mm x 5690mm
Bedroom	13'8" x 10'7"	4180mm x 3240mm
Bathroom		
Balcony	14'1" x 4'10"	4290mm x 1480mm
Total Internal Area	616 sq ft	57.2 sq m

APARTMENT A-16

Living / Bedroom / Kitchen	20'3" x 17'6"	6190mm x 5340mm
Bathroom		
Balcony	10' x 4'10"	3060mm x 1470mm
Total Internal Area	469 sq ft	43.6 sq m

APARTMENT A-17

Living / Bedroom	18'1" x 12'5"	5520mm x 3790mm
Kitchen	9'2" x 6'3"	2800mm x 1920mm
Bathroom		
Balcony	14' x 4'8"	4280mm x 1420mm
Total Internal Area	432 sq ft	40.1 sq m

APARTMENT A-18

Living / Dining / Kitchen	26'3" x 12'2"	8020mm x 3720mm
Bedroom 1	20'10" x 9'10"	6360mm x 2990mm
En Suite		
Bedroom 2	13'4" x 9'	4070mm x 2750mm
Bathroom		
Balcony 1	17'4" x 4'8"	5300mm x 1420mm
Balcony 2	11'5" x 4'8"	3500mm x 1420mm
Total Internal Area	884 sq ft	82.1 sq m

APARTMENT A-19

Living / Bedroom / Kitchen	19'5" x 17'2"	5940mm x 5230mm
Bathroom		
Balcony	15'6" x 4'8"	4730mm x 1420mm
Total Internal Area	404 sq ft	37.5 sq m

APARTMENT A-20

Living / Dining / Kitchen	23'8" x 12'9"	7210mm x 3890mm
Bedroom 1	14'8" x 9'3"	4480mm x 2820mm
Bedroom 2	11'9" x 8'	3580mm x 2450mm
Bathroom		
Balcony	24' x 4'8"	7330mm x 1430mm
Total Internal Area	662 sq ft	61.5 sq m



Total internal area shown excludes balcony and/or terrace

Whilst these floor plans have been prepared with all due care for the convenience of the intending purchaser, the information contained here is a preliminary guide only

- KEY**
- T - TERRACE
 - B - BALCONY
 - W/D - WASHER / DRYER
 - W - WARDROBE
 - E/S - EN SUITE
 - S - STORE

THE COLUMBIA BUILDING THIRD FLOOR

- KEY**
- + 3 BEDROOM
 - + 2 BEDROOM, 2 BATHS
 - + 2 BEDROOM
 - + 1 BEDROOM
 - + STUDIO



APARTMENT A-30		
Living / Dining / Kitchen	19'10" x 15'6"	6050mm x 4740mm
Bedroom 1	22'2" x 9'	6770mm x 2750mm
En Suite		
Bedroom 2	14'5" x 14'4"	4390mm x 4370mm
Bedroom 3	10'4" x 8'3"	3150mm x 2530mm
Bathroom		
Balcony 1	14'1" x 4'10"	4290mm x 1470mm
Balcony 2	10' x 4'10"	3060mm x 1470mm
Terrace	29'9" x 4'11"	9060mm x 1500mm
Total Internal Area	967 sq ft	89.8 sq m

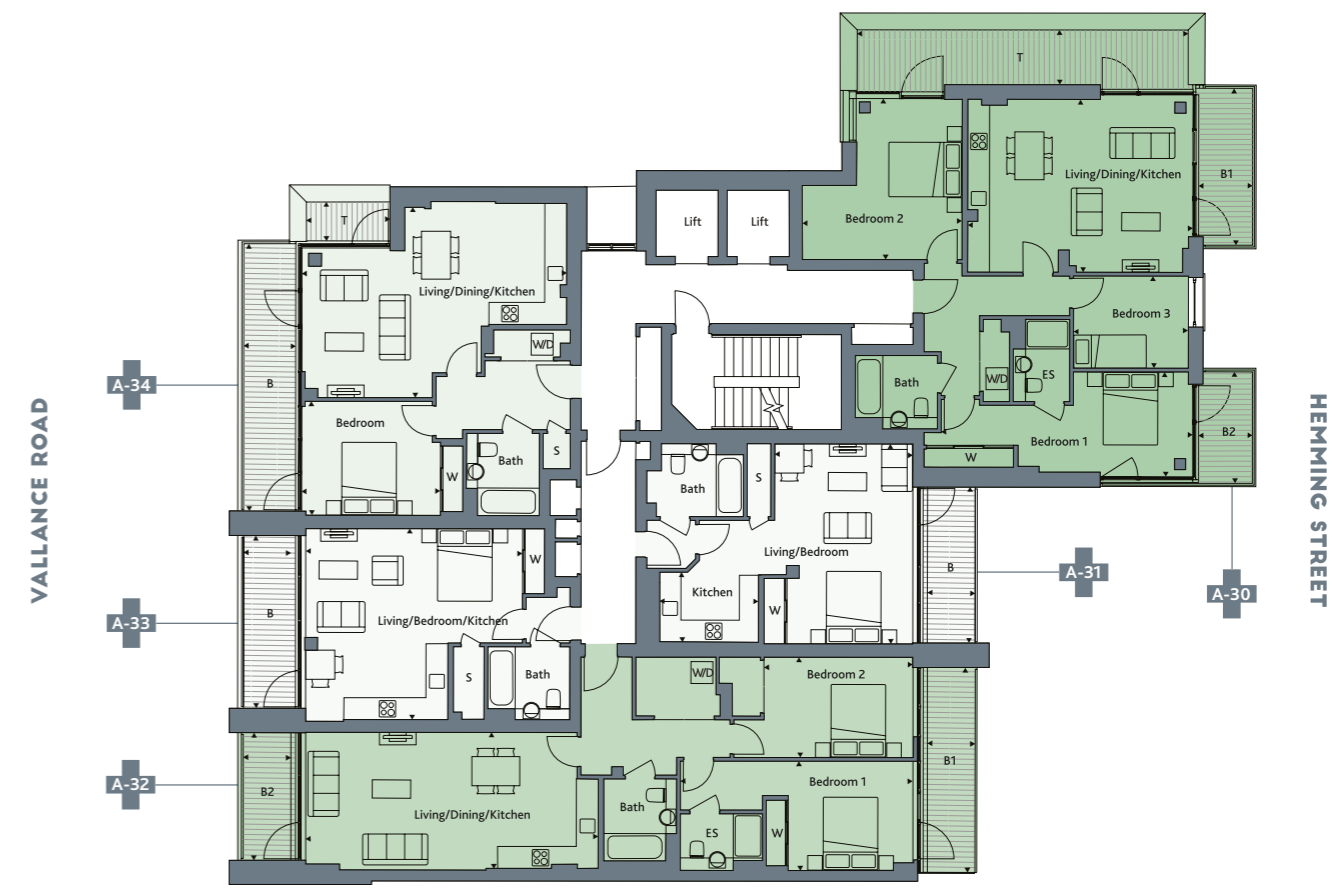
APARTMENT A-31		
Living / Bedroom	18'1" x 12'5"	5520mm x 3790mm
Kitchen	9'2" x 6'3"	2800mm x 1920mm
Bathroom		
Balcony	14' x 4'8"	4280mm x 1420mm
Total Internal Area	432 sq ft	40.1 sq m

APARTMENT A-32		
Living / Dining / Kitchen	26'3" x 12'2"	8020mm x 3720mm
Bedroom 1	20'10" x 9'10"	6360mm x 2990mm
En Suite		
Bedroom 2	13'4" x 9'	4070mm x 2750mm
Bathroom		
Balcony 1	17'4" x 4'8"	5300mm x 1420mm
Balcony 2	11'5" x 4'8"	3500mm x 1420mm
Total Internal Area	884 sq ft	82.1 sq m

APARTMENT A-33		
Living / Bedroom / Kitchen	19'5" x 17'2"	5940mm x 5230mm
Bathroom		
Balcony	15'6" x 4'8"	4730mm x 1420mm
Total Internal Area	404 sq ft	37.5 sq m

APARTMENT A-34		
Living / Dining / Kitchen	23'6" x 17'	7150mm x 5180mm
Bedroom	12'6" x 10'3"	3810mm x 3130mm
Bathroom		
Balcony	24' x 4'8"	7330mm x 1420mm
Terrace	7'6" x 3'6"	2290mm x 1070mm
Total Internal Area	626 sq ft	58.2 sq m

Total internal area shown excludes balcony and or terrace



VALLANCE ROAD

HEMING STREET

THE COLUMBIA BUILDING

- KEY**
- T - TERRACE
 - B - BALCONY
 - W/D - WASHER / DRYER
 - W - WARDROBE
 - E/S - EN SUITE
 - S - STORE

Whilst these floor plans have been prepared with all due care for the convenience of the intending purchaser, the information contained here is a preliminary guide only

THE COLUMBIA BUILDING FOURTH FLOOR

- KEY**
- + 3 BEDROOM
 - + 2 BEDROOM, 2 BATHS
 - + 2 BEDROOM
 - + 1 BEDROOM
 - + STUDIO



APARTMENT A-43

Living / Dining / Kitchen	20'1" x 15'3"	6120mm x 4660mm
Bedroom 1	22'7" x 9'	6890mm x 2750mm
En Suite		
Bedroom 2	14'5" x 14'1"	4390mm x 4300mm
Bedroom 3	10'5" x 8'6"	3190mm x 2610mm
Bathroom		
Balcony 1	14'1" x 4'10"	4290mm x 1470mm
Balcony 2	10' x 4'10"	3060mm x 1470mm

Total Internal Area
966 sq ft
89.7 sq m

APARTMENT A-44

Living / Bedroom	18'1" x 12'5"	5520mm x 3790mm
Kitchen	9'2" x 6'3"	2800mm x 1920mm
Bathroom		
Balcony	14' x 4'8"	4280mm x 1420mm

Total Internal Area
432 sq ft
40.1 sq m

APARTMENT A-45

Living / Dining / Kitchen	26'3" x 12'2"	8020mm x 3720mm
Bedroom 1	20'10" x 9'10"	6360mm x 2990mm
En Suite		
Bedroom 2	13'4" x 9'	4070mm x 2750mm
Bathroom		
Balcony 1	17'4" x 4'8"	5300mm x 1420mm
Balcony 2	11'5" x 4'8"	3500mm x 1420mm

Total Internal Area
884 sq ft
82.1 sq m

APARTMENT A-46

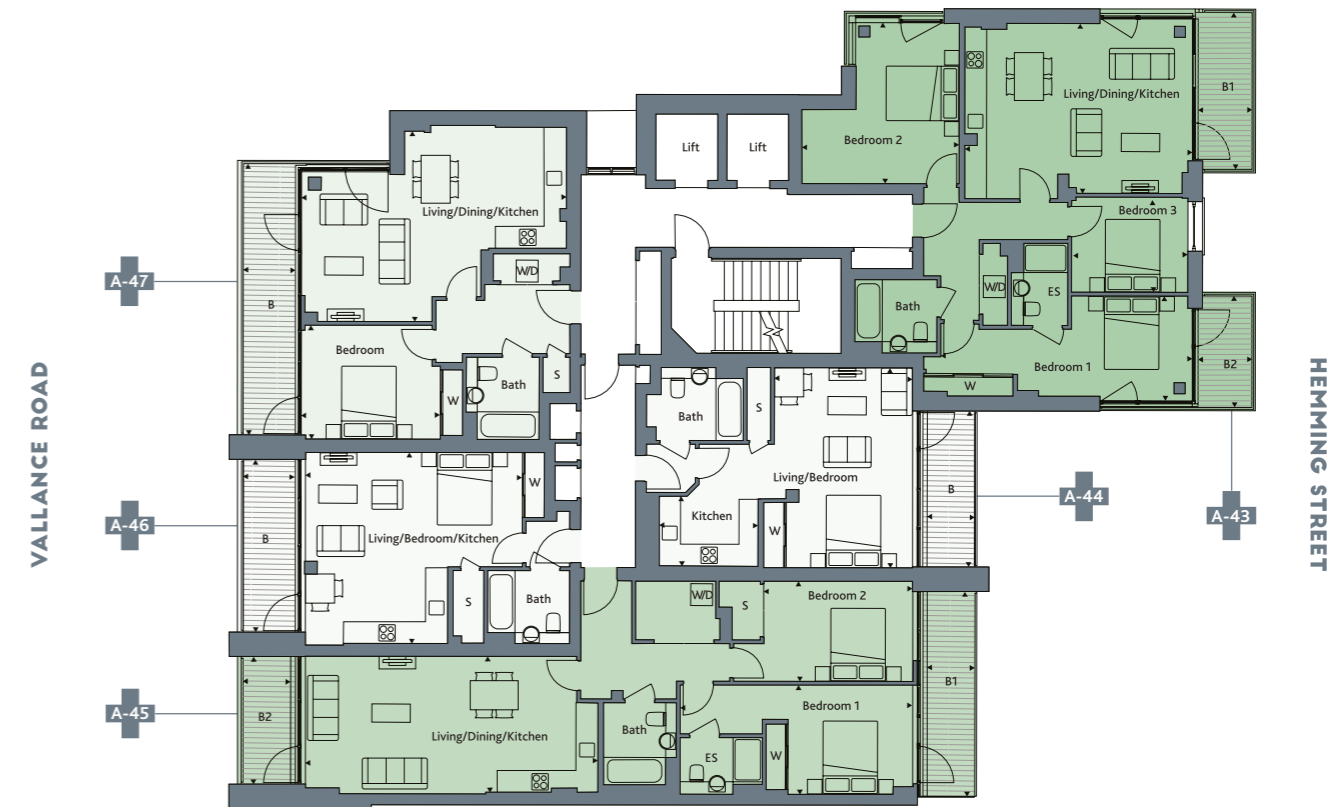
Living / Bedroom / Kitchen	19'5" x 17'2"	5940mm x 5230mm
Bathroom		
Balcony	15'6" x 4'8"	4730mm x 1420mm

Total Internal Area
404 sq ft
37.5 sq m

APARTMENT A-47

Living / Dining / Kitchen	23'5" x 17'	7150mm x 5180mm
Bedroom	12'1" x 10'3"	3700mm x 3130mm
Bathroom		
Balcony	24'5" x 4'8"	7440mm x 1420mm

Total Internal Area
626 sq ft
58.1 sq m



- KEY**
- T - TERRACE
 - B - BALCONY
 - W/D - WASHER / DRYER
 - W - WARDROBE
 - E/S - EN SUITE
 - S - STORE

Total internal area shown excludes balcony and/or terrace

Whilst these floor plans have been prepared with all due care for the convenience of the intending purchaser, the information contained here is a preliminary guide only

THE COLUMBIA BUILDING FIFTH FLOOR

- KEY**
- + 3 BEDROOM
 - + 2 BEDROOM, 2 BATHS
 - + 2 BEDROOM
 - + 1 BEDROOM
 - + STUDIO

APARTMENT A-56

Living / Dining / Kitchen	20'1" x 15'3"	6120mm x 4660mm
Bedroom 1	22'7" x 9'	6890mm x 2750mm
En Suite		
Bedroom 2	14'5" x 14'1"	4390mm x 4300mm
Bedroom 3	10'5" x 8'6"	3190mm x 2610mm
Bathroom		
Balcony 1	14'1" x 4'10"	4290mm x 1470mm
Balcony 2	10' x 4'10"	3060mm x 1470mm

Total Internal Area
966 sq ft
89.7 sq m

APARTMENT A-59

Living / Bedroom / Kitchen	19'5" x 17'2"	5940mm x 5230mm
Bathroom		
Balcony	15'6" x 4'8"	4730mm x 1420mm

Total Internal Area
404 sq ft
37.5 sq m

APARTMENT A-57

Living / Bedroom	18'1" x 12'5"	5520mm x 3790mm
Kitchen	9'2" x 6'3"	2800mm x 1920mm
Bathroom		
Balcony	14' x 4'8"	4280mm x 1420mm

Total Internal Area
432 sq ft
40.1 sq m

APARTMENT A-60

Living / Dining / Kitchen	23'5" x 17'	7150mm x 5180mm
Bedroom	12'1" x 10'3"	3700mm x 3130mm
Bathroom		
Balcony	24'5" x 4'8"	7440mm x 1420mm

Total Internal Area
626 sq ft
58.1 sq m

APARTMENT A-58

Living / Dining / Kitchen	26'3" x 12'2"	8020mm x 3720mm
Bedroom 1	20'10" x 9'10"	6360mm x 2990mm
En Suite		
Bedroom 2	13'4" x 9'	4070mm x 2750mm
Bathroom		
Balcony 1	17'4" x 4'8"	5300mm x 1420mm
Balcony 2	11'5" x 4'8"	3500mm x 1420mm

Total Internal Area
884 sq ft
82.1 sq m

Total internal area shown excludes balcony and/or terrace



- KEY**
- T - TERRACE
 - B - BALCONY
 - W/D - WASHER / DRYER
 - W - WARDROBE
 - E/S - EN SUITE
 - S - STORE

Whilst these floor plans have been prepared with all due care for the convenience of the intending purchaser, the information contained here is a preliminary guide only

THE COLUMBIA BUILDING SIXTH FLOOR

- KEY**
- + 3 BEDROOM
 - + 2 BEDROOM, 2 BATHS
 - + 2 BEDROOM
 - + 1 BEDROOM
 - + STUDIO



APARTMENT A-69

Living / Dining / Kitchen	20'1" x 15'3"	6120mm x 4660mm
Bedroom 1	22'7" x 9'	6890mm x 2750mm
En Suite		
Bedroom 2	14'5" x 14'1"	4390mm x 4300mm
Bedroom 3	10'5" x 8'6"	3190mm x 2610mm
Bathroom		
Balcony 1	14'1" x 4'10"	4290mm x 1470mm
Balcony 2	10' x 4'10"	3060mm x 1470mm

Total Internal Area	966 sq ft 89.7 sq m
----------------------------	-------------------------------

APARTMENT A-72

Living / Bedroom / Kitchen	19'5" x 17'2"	5940mm x 5230mm
Bathroom		
Balcony	15'6" x 4'8"	4730mm x 1420mm

Total Internal Area	404 sq ft 37.5 sq m
----------------------------	-------------------------------

APARTMENT A-70

Living / Bedroom	18'1" x 12'5"	5520mm x 3790mm
Bathroom		
Kitchen	9'2" x 6'3"	2800mm x 1920mm
Balcony	14' x 4'8"	4280mm x 1420mm

Total Internal Area	432 sq ft 40.1 sq m
----------------------------	-------------------------------

APARTMENT A-73

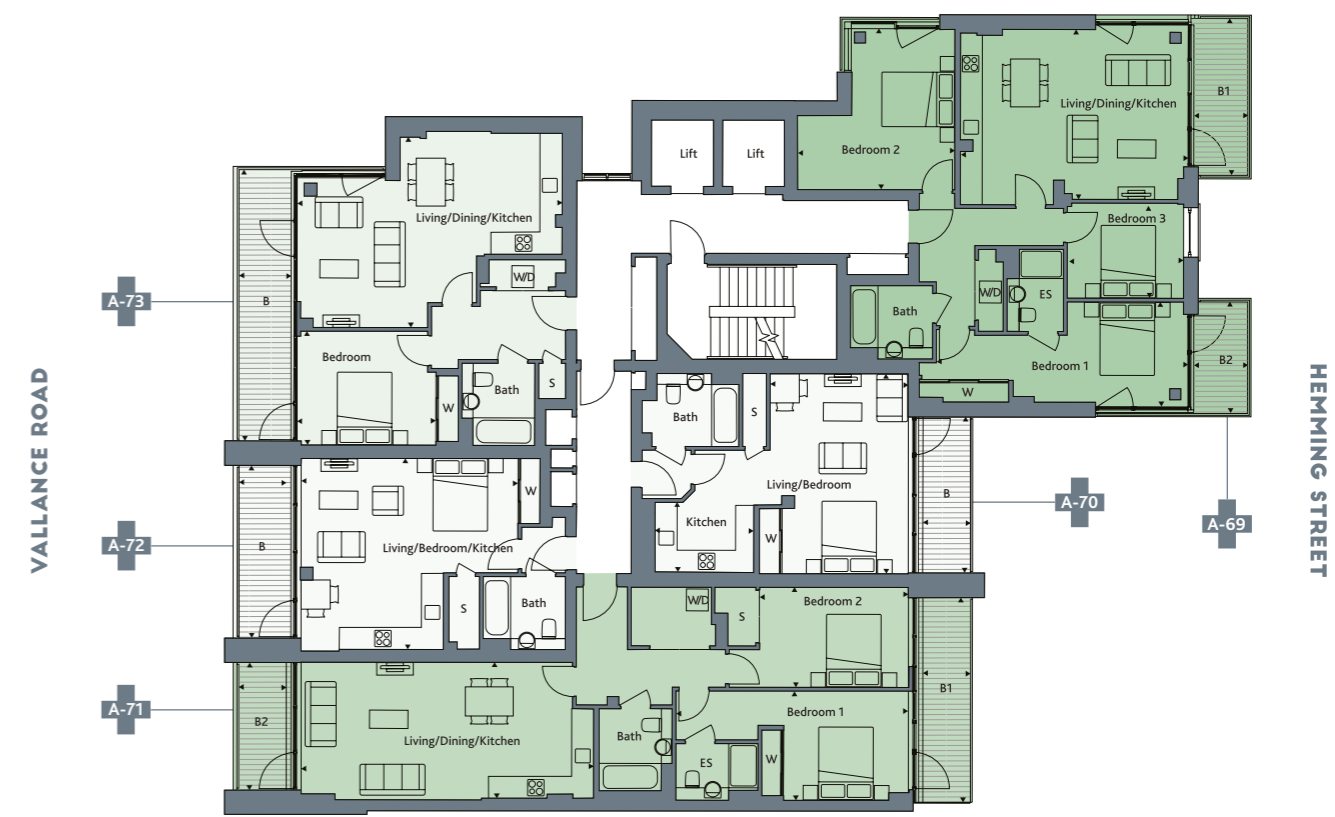
Living / Dining / Kitchen	23'5" x 17'	7150mm x 5180mm
Bedroom	12'1" x 10'3"	3700mm x 3130mm
Bathroom		
Balcony	24'5" x 4'8"	7440mm x 1420mm

Total Internal Area	626 sq ft 58.1 sq m
----------------------------	-------------------------------

APARTMENT A-71

Living / Dining / Kitchen	26'3" x 12'2"	8020mm x 3720mm
Bedroom 1	20'10" x 9'10"	6360mm x 2990mm
En Suite		
Bedroom 2	13'4" x 9'	4070mm x 2750mm
Bathroom		
Balcony 1	17'4" x 4'8"	5300mm x 1420mm
Balcony 2	11'5" x 4'8"	3500mm x 1420mm

Total Internal Area	884 sq ft 82.1 sq m
----------------------------	-------------------------------



- KEY**
- T - TERRACE
 - B - BALCONY
 - W/D - WASHER / DRYER
 - W - WARDROBE
 - E/S - EN SUITE
 - S - STORE

Total internal area shown excludes balcony and/or terrace

Whilst these floor plans have been prepared with all due care for the convenience of the intending purchaser, the information contained here is a preliminary guide only

THE COLUMBIA BUILDING SEVENTH FLOOR

- KEY**
- + 3 BEDROOM
 - + 2 BEDROOM, 2 BATHS
 - + 2 BEDROOM
 - + 1 BEDROOM
 - + STUDIO

APARTMENT A-81

Living / Dining / Kitchen	20'1" x 15'3"	6120mm x 4660mm
Bedroom 1	22'7" x 9'	6890mm x 2750mm
En Suite		
Bedroom 2	14'5" x 14'1"	4390mm x 4300mm
Bedroom 3	10'5" x 8'6"	3190mm x 2610mm
Bathroom		
Balcony 1	14'1" x 4'10"	4290mm x 1470mm
Balcony 2	10' x 4'10"	3060mm x 1470mm

Total Internal Area
966 sq ft
89.7 sq m

APARTMENT A-84

Living / Dining / Kitchen	23'7" x 12'8"	7210mm x 3870mm
Bedroom 1	13'9" x 9'	4190mm x 2750mm
En Suite		
Bedroom 2	10'4" x 8'3"	3150mm x 2530mm
Bathroom		
Balcony	29'2" x 4'8"	8900mm x 1430mm

Total Internal Area
724 sq ft
67.2 sq m

APARTMENT A-82

Living / Dining / Kitchen	23'9" x 12'	7240mm x 3670mm
Bedroom	14' x 10'2"	4280mm x 3100mm
Bathroom		
Balcony	14' x 4'8"	4280mm x 1430mm

Total Internal Area
538 sq ft
50 sq m

APARTMENT A-83

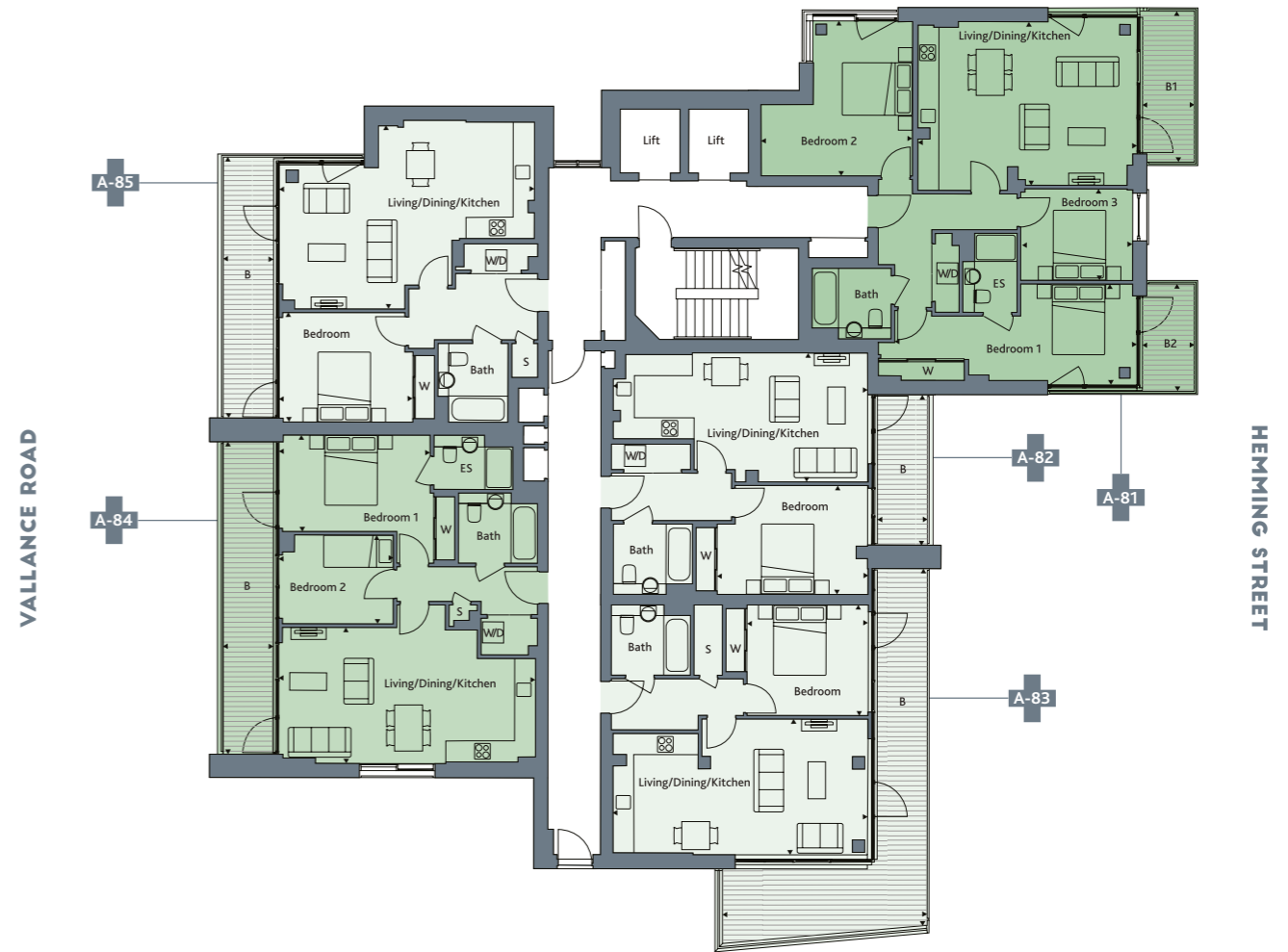
Living / Dining / Kitchen	23'10" x 12'8"	7260mm x 3860mm
Bedroom	11'3" x 10'4"	3450mm x 3150mm
Bathroom		
Balcony	33'3" x 19'2"	10150mm x 5840mm

Total Internal Area
565 sq ft
52.5 sq m

APARTMENT A-85

Living / Dining / Kitchen	23'5" x 17'	7150mm x 5180mm
Bedroom	12'1" x 10'3"	3700mm x 3130mm
Bathroom		
Balcony	24'5" x 4'8"	7440mm x 1420mm

Total Internal Area
626 sq ft
58.1 sq m



- KEY**
- T - TERRACE
 - B - BALCONY
 - W/D - WASHER / DRYER
 - W - WARDROBE
 - E/S - EN SUITE
 - S - STORE

Total internal area shown excludes balcony and/or terrace

Whilst these floor plans have been prepared with all due care for the convenience of the intending purchaser, the information contained here is a preliminary guide only

THE COLUMBIA BUILDING EIGHTH FLOOR

- KEY**
- + 3 BEDROOM
 - + 2 BEDROOM, 2 BATHS
 - + 2 BEDROOM
 - + 1 BEDROOM
 - + STUDIO

APARTMENT A-87

Living / Dining / Kitchen	20'1" x 15'3"	6120mm x 4660mm
Bedroom 1	22'7" x 9'	6890mm x 2750mm
En Suite		
Bedroom 2	14'5" x 14'1"	4390mm x 4300mm
Bedroom 3	10'5" x 8'6"	3190mm x 2610mm
Bathroom		
Balcony 1	14'1" x 4'10"	4290mm x 1470mm
Balcony 2	10' x 4'10"	3060mm x 1470mm

Total Internal Area
966 sq ft
89.7 sq m

APARTMENT A-90

Living / Dining / Kitchen	23'7" x 12'8"	7210mm x 3870mm
Bedroom 1	13'9" x 9'	4190mm x 2750mm
En Suite		
Bedroom 2	10'4" x 8'3"	3150mm x 2530mm
Bathroom		
Balcony	29'2" x 4'8"	8900mm x 1430mm

Total Internal Area
724 sq ft
67.2 sq m

APARTMENT A-88

Living / Dining / Kitchen	23'9" x 12'	7240mm x 3670mm
Bedroom	14' x 10'3"	4280mm x 3120mm
Bathroom		
Balcony	14' x 4'8"	4280mm x 1420mm

Total Internal Area
539 sq ft
50.1 sq m

APARTMENT A-91

Living / Dining / Kitchen	23'5" x 17'	7150mm x 5180mm
Bedroom	12'1" x 10'3"	3700mm x 3130mm
Bathroom		
Balcony	24'5" x 4'8"	7440mm x 1420mm

Total Internal Area
626 sq ft
58.1 sq m

APARTMENT A-89

Living / Dining / Kitchen	22'6" x 13'4"	6860mm x 4070mm
Bedroom 1	13'5" x 10'	4100mm x 3050mm
Bedroom 2	13' x 7'2"	3960mm x 2200mm
Bathroom		
Balcony	27'9" x 4'8"	8450mm x 1420mm

Total Internal Area
692 sq ft
64.3 sq m

Total internal area shown excludes balcony and/or terrace



- KEY**
- T - TERRACE
 - B - BALCONY
 - W/D - WASHER / DRYER
 - W - WARDROBE
 - E/S - EN SUITE
 - S - STORE

Whilst these floor plans have been prepared with all due care for the convenience of the intending purchaser, the information contained here is a preliminary guide only

THE COLUMBIA BUILDING NINTH FLOOR

- KEY**
- + 3 BEDROOM
 - + 2 BEDROOM, 2 BATHS
 - + 2 BEDROOM
 - + 1 BEDROOM
 - + STUDIO



APARTMENT A-92

Living / Dining / Kitchen	20'1" x 15'3"	6120mm x 4660mm
Bedroom 1	22'7" x 9'	6890mm x 2750mm
En Suite		
Bedroom 2	14'5" x 14'1"	4390mm x 4300mm
Bedroom 3	10'5" x 8'6"	3190mm x 2610mm
Bathroom		
Balcony 1	14'1" x 4'10"	4290mm x 1470mm
Balcony 2	10' x 4'10"	3060mm x 1470mm

Total Internal Area	966 sq ft 89.7 sq m
----------------------------	-------------------------------

APARTMENT A-93

Living / Dining / Kitchen	23'4" x 14'1"	7130mm x 4290mm
Bedroom 1	16' x 9'1"	4880mm x 2780mm
En Suite		
Bedroom 2	11'4" x 11'3"	3460mm x 3440mm
Bathroom		
Balcony 1	24'5" x 4'8"	7440mm x 1420mm
Balcony 2	9'8" x 4'8"	2960mm x 1420mm
Terrace	15'3" x 3'7"	4650mm x 1100mm

Total Internal Area	811 sq ft 75.3 sq m
----------------------------	-------------------------------

APARTMENT A-94

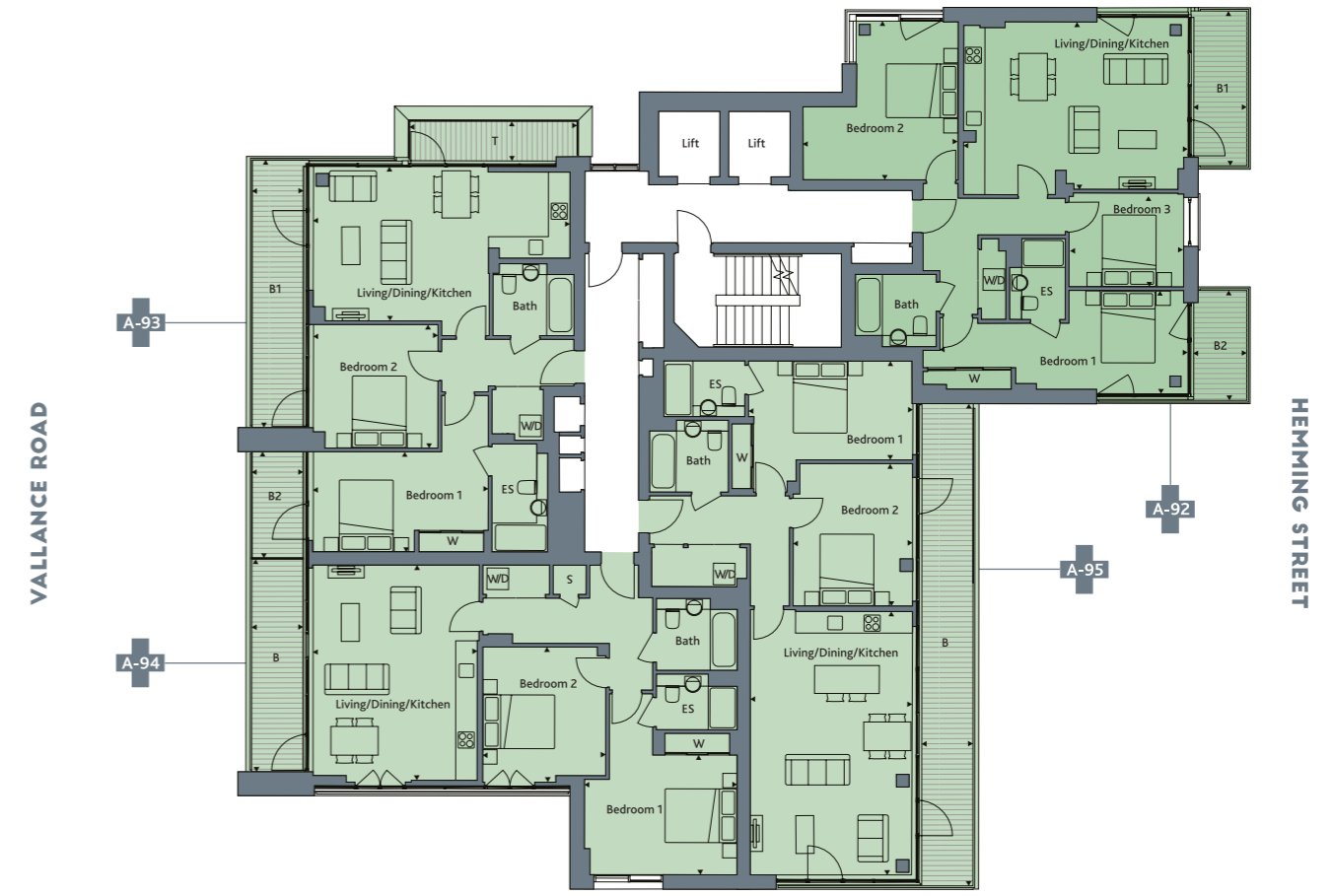
Living / Dining / Kitchen	19'7" x 14'11"	5990mm x 4560mm
Bedroom 1	13'11" x 10'11"	4240mm x 3330mm
En Suite		
Bedroom 2	12'4" x 11'2"	3760mm x 3420mm
Bathroom		
Balcony	19'5" x 4'8"	5910mm x 1420mm

Total Internal Area	859 sq ft 79.8 sq m
----------------------------	-------------------------------

APARTMENT A-95

Living / Dining / Kitchen	24' x 14'8"	7320mm x 4480mm
Bedroom 1	14'11" x 9'	4540mm x 2750mm
En Suite		
Bedroom 2	13' x 10'3"	3960mm x 3130mm
Bathroom		
Balcony	43'11" x 4'8"	13400mm x 1420mm

Total Internal Area	892 sq ft 82.9 sq m
----------------------------	-------------------------------



- KEY**
- T - TERRACE
 - B - BALCONY
 - W/D - WASHER / DRYER
 - W - WARDROBE
 - E/S - EN SUITE
 - S - STORE

Total internal area shown excludes balcony and/or terrace

Whilst these floor plans have been prepared with all due care for the convenience of the intending purchaser, the information contained here is a preliminary guide only

THE ROMAN BUILDING



THE ROMAN BUILDING

The Roman Building is one of four apartment blocks that make up the White + Green development. The eight storey building has 49 apartments over seven floors facing both Vallance Road and Hemming Street. These include studio suites, 1 bedroom, 2 bedroom and 3 bedroom apartments from the first to seventh floors. All benefit from a communal roof terrace on the seventh floor, cycle storage on the ground floor and their own balcony, either facing west over Vallance Road or east towards Hemming Street and the Piazza.

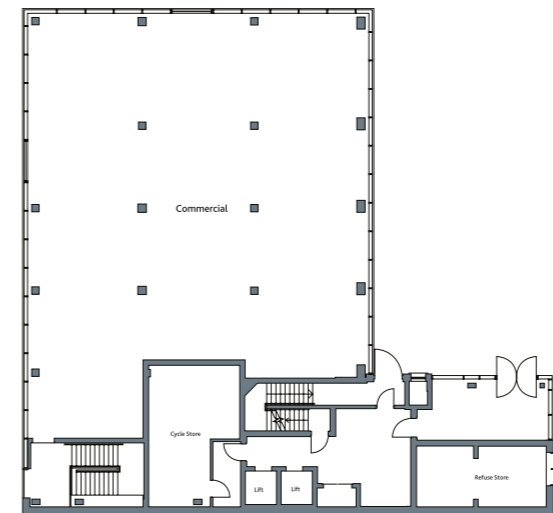


The computer generated illustration is drawn from plan and is indicative only of how the completed building will appear

SITE PLAN



GROUND FLOOR



KEY

- ▶ - ENTRANCE TO BUILDING
- BUILDING D - AFFORDABLE HOUSING

Whilst these floor plans have been prepared with all due care for the convenience of the intending purchaser, the information contained here is a preliminary guide only.

THE ROMAN BUILDING

FIRST FLOOR

- KEY**
- + 3 BEDROOM
 - + 2 BEDROOM, 2 BATHS
 - + 2 BEDROOM
 - + 1 BEDROOM
 - + STUDIO



APARTMENT A-7

Living / Dining / Kitchen	22'7" x 10'10"	6900mm x 3310mm
Bedroom	11'11" x 8'6"	3650mm x 2600mm
Bathroom		
Balcony	19'6" x 4'8"	5960mm x 1420mm
Total Internal Area	546 sq ft	50.7 sq m

APARTMENT A-8

Living / Dining / Kitchen	23'5" x 13'9"	7140mm x 4200mm
Bedroom	13'11" x 9'	4250mm x 2750mm
Bathroom		
Balcony	22'10" x 4'8"	6970mm x 1420mm
Total Internal Area	550 sq ft	51.1 sq m

APARTMENT A-9

Living / Bedroom	19'4" x 13'1"	5910mm x 3990mm
Kitchen	8'1" x 7'4"	2480mm x 2230mm
Bathroom		
Balcony	18'6" x 4'8"	5640mm x 1420mm
Total Internal Area	450 sq ft	41.8 sq m

APARTMENT A-10

Living / Dining / Kitchen	24'7" x 13'4"	7510mm x 4070mm
Bedroom	20'4" x 8'7"	6200mm x 2620mm
Bathroom		
Terrace	22'6" x 11'7"	6860mm x 3550mm
Total Internal Area	575 sq ft	53.4 sq m

APARTMENT A-11

Living / Bedroom	19'9" x 13'	6030mm x 3980mm
Kitchen	11'2" x 7'10"	3410mm x 2410mm
Bathroom		
Balcony	19'2" x 4'8"	5860mm x 1420mm
Total Internal Area	475 sq ft	44.1 sq m

APARTMENT A-12

Living / Bedroom	19'7" x 13'	5990mm x 3980mm
Kitchen	9'9" x 7'11"	2980mm x 2410mm
Bathroom		
Balcony	19'6" x 4'8"	5940mm x 1420mm
Total Internal Area	475 sq ft	44.1 sq m

APARTMENT A-13

Living / Dining / Kitchen	23'8" x 13'5"	7220mm x 4090mm
Bedroom	17'2" x 9'	5250mm x 2750mm
Bathroom		
Balcony	22'6" x 4'8"	6860mm x 1420mm
Total Internal Area	552 sq ft	51.3 sq m

APARTMENT A-14

Living / Dining / Kitchen	23'10" x 12'10"	7280mm x 3920mm
Bedroom	11'11" x 10'5"	3630mm x 3170mm
Bathroom		
Balcony	22'6" x 4'8"	6860mm x 1420mm
Total Internal Area	550 sq ft	51.1 sq m

Total internal area shown excludes balcony and/or terrace



- KEY**
- T - TERRACE
 - B - BALCONY
 - W/D - WASHER / DRYER
 - W - WARDROBE
 - E/S - EN SUITE
 - S - STORE

Whilst these floor plans have been prepared with all due care for the convenience of the intending purchaser, the information contained here is a preliminary guide only

THE ROMAN BUILDING SECOND FLOOR

- KEY**
- + 3 BEDROOM
 - + 2 BEDROOM, 2 BATHS
 - + 2 BEDROOM
 - + 1 BEDROOM
 - + STUDIO

APARTMENT A-21

Living / Dining / Kitchen	20'10" x 16'2"	6370mm x 4930mm
Bedroom 1	17'7" x 8'11"	5380mm x 2720mm
En Suite		
Bedroom 2	17'5" x 8'11"	5320mm x 2720mm
Bathroom		
Balcony 1	18'5" x 5'	5620mm x 1530mm
Balcony 2	14'5" x 4'8"	4410mm x 1420mm
Total Internal Area	869 sq ft	80.7 sq m

APARTMENT A-24

Living / Bedroom	19'4" x 13'1"	5910mm x 3990mm
Kitchen	8'1" x 7'4"	2480mm x 2230mm
Bathroom		
Balcony	18'6" x 4'8"	5640mm x 1420mm
Total Internal Area	450 sq ft	41.8 sq m

APARTMENT A-27

Living / Bedroom	19'7" x 13'	5990mm x 3980mm
Kitchen	9'9" x 7'11"	2980mm x 2410mm
Bathroom		
Balcony	19'6" x 4'8"	5940mm x 1420mm
Total Internal Area	475 sq ft	44.1 sq m

APARTMENT A-22

Living / Bedroom	19'1" x 13'5"	5820mm x 4100mm
Kitchen	7'9" x 6'6"	2380mm x 1980mm
Bathroom		
Balcony	18'6" x 4'8"	5640mm x 1420mm
Total Internal Area	444 sq ft	41.2 sq m

APARTMENT A-25

Living / Dining / Kitchen	24'7" x 13'4"	7510mm x 4070mm
Bedroom	20'4" x 8'7"	6200mm x 2620mm
Bathroom		
Balcony	9'8" x 4'10"	2940mm x 1470mm
Total Internal Area	578 sq ft	53.7 sq m

APARTMENT A-28

Living / Dining / Kitchen	23'8" x 13'5"	7220mm x 4090mm
Bedroom	17'2" x 9'	5250mm x 2750mm
Bathroom		
Balcony	22'6" x 4'8"	6860mm x 1420mm
Total Internal Area	552 sq ft	51.3 sq m

APARTMENT A-23

Living / Dining / Kitchen	23'5" x 13'9"	7140mm x 4200mm
Bedroom	13'11" x 9'	4250mm x 2750mm
Bathroom		
Balcony	22'10" x 4'8"	6970mm x 1420mm
Total Internal Area	550 sq ft	51.1 sq m

APARTMENT A-26

Living / Bedroom	19'9" x 13'	6030mm x 3980mm
Kitchen	11'2" x 7'10"	3410mm x 2410mm
Bathroom		
Balcony	19'2" x 4'8"	5860mm x 1420mm
Total Internal Area	475 sq ft	44.1 sq m

APARTMENT A-29

Living / Dining / Kitchen	23'11" x 13'7"	7300mm x 4140mm
Bedroom	11'7" x 9'2"	3550mm x 2800mm
Bathroom		
Balcony	22'6" x 4'8"	6860mm x 1420mm
Total Internal Area	556 sq ft	51.7 sq m

Total internal area shown excludes balcony and/or terrace



- KEY**
- T - TERRACE
 - B - BALCONY
 - W/D - WASHER / DRYER
 - W - WARDROBE
 - E/S - EN SUITE
 - S - STORE

Whilst these floor plans have been prepared with all due care for the convenience of the intending purchaser, the information contained here is a preliminary guide only

THE ROMAN BUILDING THIRD FLOOR

- KEY**
- + 3 BEDROOM
 - + 2 BEDROOM, 2 BATHS
 - + 2 BEDROOM
 - + 1 BEDROOM
 - + STUDIO

APARTMENT A-35

Living / Dining / Kitchen	20'10" x 16'2"	6370mm x 4930mm
Bedroom 1	17'7" x 8'11"	5380mm x 2720mm
En Suite		
Bedroom 2	17'5" x 8'11"	5320mm x 2720mm
Bathroom		
Balcony	14'5" x 4'8"	4410mm x 1420mm

Total Internal Area
869 sq ft
80.7 sq m

APARTMENT A-38

Living / Bedroom	19'4" x 13'1"	5910mm x 3990mm
Kitchen	8'1" x 7'4"	2480mm x 2230mm
Bathroom		
Balcony	18'6" x 4'8"	5640mm x 1420mm

Total Internal Area
450 sq ft
41.8 sq m

APARTMENT A-41

Living / Dining / Kitchen	23'9" x 13'	7240mm x 3960mm
Bedroom 1	16'4" x 9'	5000mm x 2750mm
En Suite		
Bedroom 2	12'4" x 9'	3770mm x 2750mm
Bathroom		
Balcony	31'4" x 4'8"	9560mm x 1420mm

Total Internal Area
765 sq ft
71.1 sq m

APARTMENT A-36

Living / Bedroom	19'1" x 13'5"	5820mm x 4100mm
Kitchen	7'9" x 6'6"	2380mm x 1980mm
Bathroom		
Balcony	18'6" x 4'8"	5640mm x 1420mm

Total Internal Area
443 sq ft
41.2 sq m

APARTMENT A-39

Living / Dining / Kitchen	24'7" x 13'4"	7510mm x 4070mm
Bedroom	20'4" x 8'7"	6200mm x 2620mm
Bathroom		
Balcony	9'8" x 4'10"	2940mm x 1470mm

Total Internal Area
578 sq ft
53.7 sq m

APARTMENT A-42

Living / Dining / Kitchen	24'9" x 12'3"	7550mm x 3750mm
Bedroom	12'3" x 10'1"	3740mm x 3070mm
Bathroom		
Balcony	21'5" x 4'8"	6540mm x 1430mm

Total Internal Area
550 sq ft
51.1 sq m

APARTMENT A-37

Living / Dining / Kitchen	23'5" x 13'9"	7140mm x 4200mm
Bedroom	13'11" x 9'	4250mm x 2750mm
Bathroom		
Balcony	22'10" x 4'8"	6970mm x 1420mm

Total Internal Area
550 sq ft
51.1 sq m

APARTMENT A-40

Living / Dining / Kitchen	23'9" x 13'	7240mm x 3960mm
Bedroom 1	16'2" x 9'	4940mm x 2750mm
En Suite		
Bedroom 2	13' x 9'	3960mm x 2750mm
Bathroom		
Balcony	31' x 4'8"	9440mm x 1420mm

Total Internal Area
763 sq ft
70.9 sq m

Total internal area shown excludes balcony and/or terrace



- KEY**
- T - TERRACE
 - B - BALCONY
 - W/D - WASHER / DRYER
 - W - WARDROBE
 - E/S - EN SUITE
 - S - STORE

Whilst these floor plans have been prepared with all due care for the convenience of the intending purchaser, the information contained here is a preliminary guide only

THE ROMAN BUILDING FOURTH FLOOR

- KEY**
- + 3 BEDROOM
 - + 2 BEDROOM, 2 BATHS
 - + 2 BEDROOM
 - + 1 BEDROOM
 - + STUDIO



APARTMENT A-48

Living / Dining / Kitchen	20'10" x 16'2"	6370mm x 4930mm
Bedroom 1	17'7" x 8'11"	5380mm x 2720mm
En Suite		
Bedroom 2	17'5" x 8'11"	5320mm x 2720mm
Bathroom		
Balcony	14'5" x 4'8"	4410mm x 1420mm

Total Internal Area	869 sq ft 80.7 sq m
----------------------------	--------------------------------------

APARTMENT A-51

Living / Bedroom	19'4" x 13'1"	5910mm x 3990mm
Kitchen	8'1" x 7'4"	2480mm x 2230mm
Bathroom		
Balcony	18'6" x 4'8"	5640mm x 1420mm

Total Internal Area	450 sq ft 41.8 sq m
----------------------------	--------------------------------------

APARTMENT A-54

Living / Dining / Kitchen	23'11" x 12'4"	7300mm x 3760mm
Bedroom 1	12'8" x 8'6"	3860mm x 2600mm
Bedroom 2	12'8" x 8'4"	3860mm x 2540mm
Bathroom		
Balcony	27'6" x 4'3"	8400mm x 1300mm

Total Internal Area	674 sq ft 62.6 sq m
----------------------------	--------------------------------------

APARTMENT A-49

Living / Bedroom	19'1" x 13'5"	5820mm x 4100mm
Kitchen	7'9" x 6'6"	2380mm x 1980mm
Bathroom		
Balcony	18'6" x 4'8"	5640mm x 1420mm

Total Internal Area	443 sq ft 41.2 sq m
----------------------------	--------------------------------------

APARTMENT A-52

Living / Dining / Kitchen	24'7" x 13'4"	7510mm x 4070mm
Bedroom	20'4" x 8'7"	6200mm x 2620mm
Bathroom		
Balcony	9'8" x 4'10"	2940mm x 1470mm

Total Internal Area	578 sq ft 53.7 sq m
----------------------------	--------------------------------------

APARTMENT A-55

Living / Dining / Kitchen	23'10" x 12'3"	7300mm x 3730mm
Bedroom 1	17'2" x 9'4"	5250mm x 2850mm
En Suite		
Bedroom 2	13' x 8'2"	3960mm x 2510mm
Bathroom		
Balcony	30' x 4'3"	9140mm x 1300mm

Total Internal Area	735 sq ft 68.3 sq m
----------------------------	--------------------------------------

APARTMENT A-50

Living / Dining / Kitchen	23'5" x 13'9"	7140mm x 4200mm
Bedroom	13'11" x 9'	4250mm x 2750mm
Bathroom		
Balcony	22'10" x 4'8"	6970mm x 1420mm

Total Internal Area	550 sq ft 51.1 sq m
----------------------------	--------------------------------------

APARTMENT A-53

Living / Dining / Kitchen	23'8" x 12'8"	7220mm x 3870mm
Bedroom 1	14'2" x 9'	4340mm x 2750mm
Bedroom 2	13'1" x 8'	3980mm x 2430mm
Bathroom		
Balcony	26'3" x 4'3"	8000mm x 1300mm

Total Internal Area	666 sq ft 61.9 sq m
----------------------------	--------------------------------------

Total internal area shown excludes balcony and/or terrace



- KEY**
- T - TERRACE
 - B - BALCONY
 - W/D - WASHER / DRYER
 - W - WARDROBE
 - E/S - EN SUITE
 - S - STORE

Whilst these floor plans have been prepared with all due care for the convenience of the intending purchaser, the information contained here is a preliminary guide only

THE ROMAN BUILDING FIFTH FLOOR

- KEY**
- + 3 BEDROOM
 - + 2 BEDROOM, 2 BATHS
 - + 2 BEDROOM
 - + 1 BEDROOM
 - + STUDIO



APARTMENT A-61		
Living / Dining / Kitchen	20'10" x 16'2"	6370mm x 4930mm
Bedroom 1	17'7" x 8'11"	5380mm x 2720mm
En Suite		
Bedroom 2	17'5" x 8'11"	5320mm x 2720mm
Bathroom		
Balcony	14'5" x 4'8"	4410mm x 1420mm
Total Internal Area	869 sq ft	80.7 sq m

APARTMENT A-62		
Living / Bedroom	19'1" x 13'5"	5820mm x 4100mm
Kitchen	7'9" x 6'6"	2380mm x 1980mm
Bathroom		
Balcony	18'6" x 4'8"	5640mm x 1420mm
Total Internal Area	443 sq ft	41.2 sq m

APARTMENT A-63		
Living / Dining / Kitchen	23'5" x 13'9"	7140mm x 4200mm
Bedroom	13'11" x 9'	4250mm x 2750mm
Bathroom		
Balcony	22'10" x 4'8"	6970mm x 1420mm
Total Internal Area	550 sq ft	51.1 sq m

APARTMENT A-64		
Living / Bedroom	19'4" x 13'1"	5910mm x 3990mm
Kitchen	8'1" x 7'4"	2480mm x 2230mm
Bathroom		
Balcony	18'6" x 4'8"	5640mm x 1420mm
Total Internal Area	450 sq ft	41.8 sq m

APARTMENT A-65		
Living / Dining / Kitchen	24'7" x 13'4"	7510mm x 4070mm
Bedroom	20'4" x 8'7"	6200mm x 2620mm
Bathroom		
Balcony	9'8" x 4'10"	2940mm x 1470mm
Total Internal Area	578 sq ft	53.7 sq m

APARTMENT A-66		
Living / Dining / Kitchen	23'8" x 12'8"	7220mm x 3870mm
Bedroom 1	14'2" x 9'	4340mm x 2750mm
Bedroom 2	13'1" x 8'	3980mm x 2430mm
Bathroom		
Balcony	26'3" x 4'3"	8000mm x 1300mm
Total Internal Area	666 sq ft	61.9 sq m

APARTMENT A-67		
Living / Dining / Kitchen	23'11" x 12'4"	7300mm x 3760mm
Bedroom 1	12'8" x 8'6"	3860mm x 2600mm
Bedroom 2	12'8" x 8'4"	3860mm x 2540mm
Bathroom		
Balcony	27'6" x 4'3"	8400mm x 1300mm
Total Internal Area	674 sq ft	62.6 sq m

APARTMENT A-68		
Living / Dining / Kitchen	23'10" x 12'3"	7300mm x 3730mm
Bedroom 1	17'2" x 9'4"	5250mm x 2850mm
En Suite		
Bedroom 2	13' x 8'2"	3960mm x 2510mm
Bathroom		
Balcony	30' x 4'3"	9140mm x 1300mm
Total Internal Area	735 sq ft	68.3 sq m

Total internal area shown excludes balcony and/or terrace



- KEY**
- T - TERRACE
 - B - BALCONY
 - W/D - WASHER / DRYER
 - W - WARDROBE
 - E/S - EN SUITE
 - S - STORE

Whilst these floor plans have been prepared with all due care for the convenience of the intending purchaser, the information contained here is a preliminary guide only

THE ROMAN BUILDING

SIXTH FLOOR

- KEY**
- + 3 BEDROOM
 - + 2 BEDROOM, 2 BATHS
 - + 2 BEDROOM
 - + 1 BEDROOM
 - + STUDIO



APARTMENT A-74		
Living / Dining / Kitchen	23'8" x 13'4"	7220mm x 4070mm
Bedroom 1	15'4" x 9'	4690mm x 2750mm
En Suite		
Bedroom 2	15'4" x 7'3"	4690mm x 2230mm
Bathroom		
Balcony 1	14'8" x 4'8"	4480mm x 1420mm
Balcony 2	14'3" x 4'8"	4360mm x 1420mm
Total Internal Area	794 sq ft	73.8 sq m

APARTMENT A-75		
Living / Dining / Kitchen	23'8" x 11'11"	7220mm x 3650mm
Bedroom 1	13'11" x 9'	4250mm x 2750mm
Bedroom 2	12'6" x 6'10"	3820mm x 2100mm
Bathroom		
Balcony	28'1" x 4'8"	8560mm x 1420mm
Total Internal Area	666 sq ft	61.9 sq m

APARTMENT A-76		
Living / Bedroom	19'4" x 13'1"	5910mm x 3990mm
Kitchen	8'1" x 7'3"	2460mm x 2210mm
Bathroom		
Balcony	18'6" x 4'8"	5640mm x 1420mm
Total Internal Area	450 sq ft	41.8 sq m

APARTMENT A-77		
Living / Dining / Kitchen	24'7" x 13'4"	7510mm x 4070mm
Bedroom	20'4" x 8'7"	6200mm x 2620mm
Bathroom		
Balcony	9'8" x 4'10"	2940mm x 1470mm
Total Internal Area	578 sq ft	53.7 sq m

APARTMENT A-78		
Living / Dining / Kitchen	23'9" x 13'4"	7240mm x 4080mm
Bedroom 1	16'2" x 8'6"	4940mm x 2600mm
En Suite		
Bedroom 2	12'7" x 8'6"	3850mm x 2600mm
Bedroom 3	12'4" x 6'3"	3760mm x 1900mm
Bathroom		
Balcony	34'10" x 4'8"	10620mm x 1420mm
Total Internal Area	851 sq ft	79.1 sq m

APARTMENT A-79		
Living / Dining / Kitchen	24' x 12'6"	7330mm x 3810mm
Bedroom 1	16'9" x 8'6"	5100mm x 2600mm
En Suite		
Bedroom 2	13'2" x 8'6"	4030mm x 2600mm
Bedroom 3	13'2" x 7'4"	4030mm x 2230mm
Bathroom		
Balcony	36'3" x 4'8"	11050mm x 1420mm
Total Internal Area	855 sq ft	79.4 sq m

APARTMENT A-80		
Living / Dining / Kitchen	24'2" x 14'2"	7380mm x 4340mm
Bedroom 1	15'7" x 9'	4750mm x 2750mm
En Suite		
Bedroom 2	10'3" x 9'8"	3130mm x 2960mm
Bathroom		
Balcony	14'9" x 4'8"	4500mm x 1420mm
Total Internal Area	773 sq ft	71.8 sq m



Total internal area shown excludes balcony and/or terrace

Whilst these floor plans have been prepared with all due care for the convenience of the intending purchaser, the information contained here is a preliminary guide only

- KEY**
- T - TERRACE
 - B - BALCONY
 - W/D - WASHER / DRYER
 - W - WARDROBE
 - E/S - EN SUITE
 - S - STORE

THE ROMAN BUILDING SEVENTH FLOOR

- KEY**
- + 3 BEDROOM
 - + 2 BEDROOM, 2 BATHS
 - + 2 BEDROOM
 - + 1 BEDROOM
 - + STUDIO

APARTMENT A-86

Living / Dining / Kitchen
26' x 14'2"
7940mm x 4320mm

Bedroom 1
10'5" x 10'2"
3180mm x 3100mm

En Suite

Bedroom 2
13'4" x 10'3"
4070mm x 3140mm

Bedroom 3
9'2" x 9'
2800mm x 2740mm

Bathroom

Terrace 1
62'9" x 22'6"
19140mm x 6870mm

Terrace 2
39'6" x 7'9"
12050mm x 2380mm

Total Internal Area
1034 sq ft
96.1 sq m

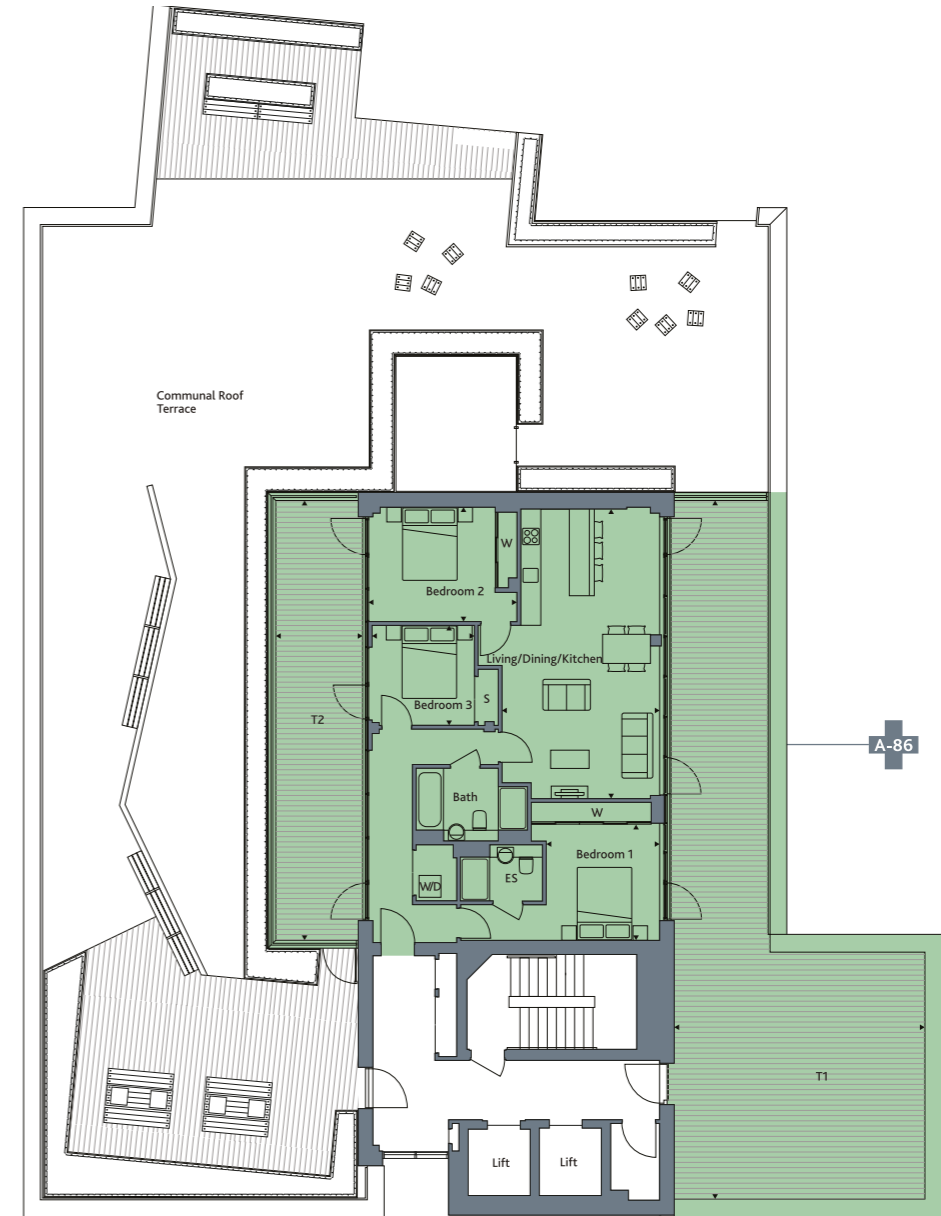
Total internal area shown excludes balcony and/or terrace



VALLANCE ROAD

HEMING STREET

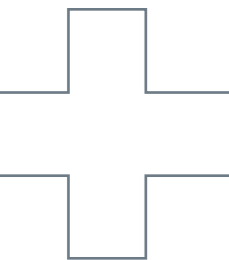
THE ROMAN BUILDING



- KEY**
- T - TERRACE
 - B - BALCONY
 - W/D - WASHER / DRYER
 - W - WARDROBE
 - E/S - EN SUITE
 - S - STORE

Whilst these floor plans have been prepared with all due care for the convenience of the intending purchaser, the information contained here is a preliminary guide only

THE PETTICOAT BUILDING



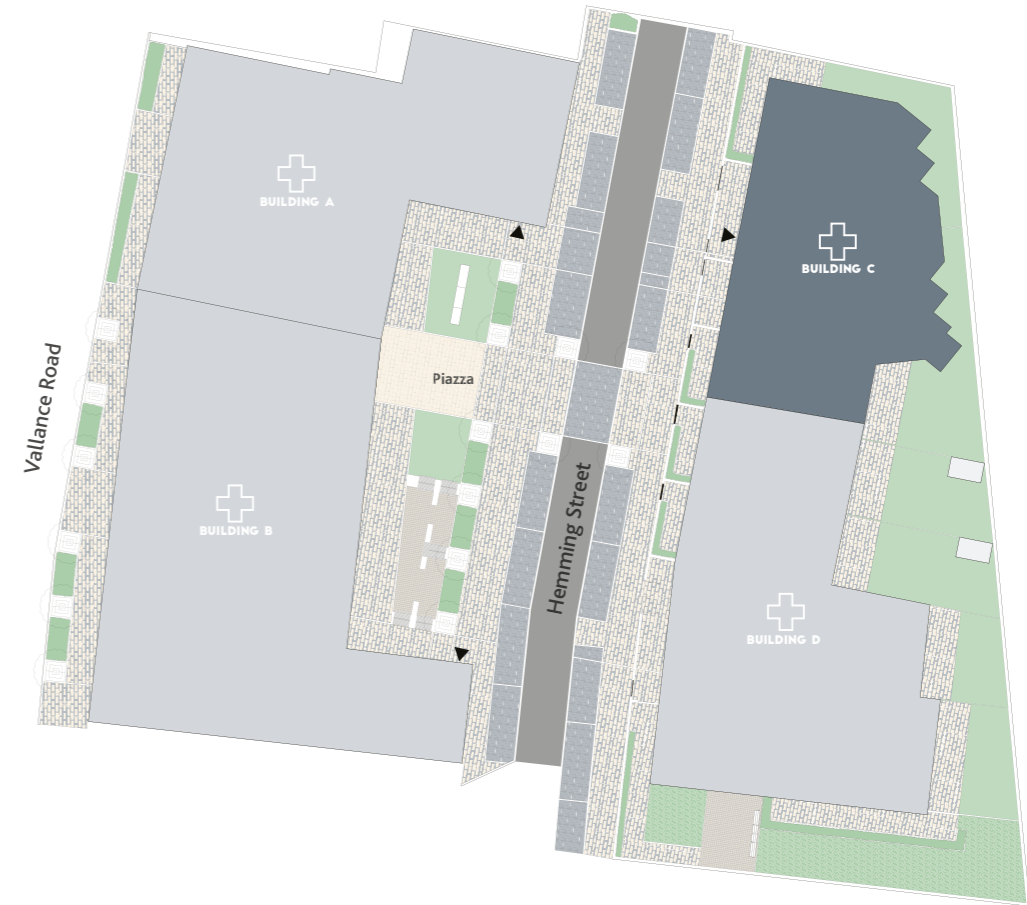
THE PETTICOAT BUILDING

The Petticoat Building is one of four apartment blocks that make up the White + Green development. The eight storey building has 12 apartments for sale over four floors facing Hemming Street. These include 1 bedroom, 2 bedroom and 3 bedroom apartments from the fourth to seventh floors. All benefit from a communal roof terrace on the seventh floor, cycle storage on the ground floor and their own balcony, with a westerly or easterly view.

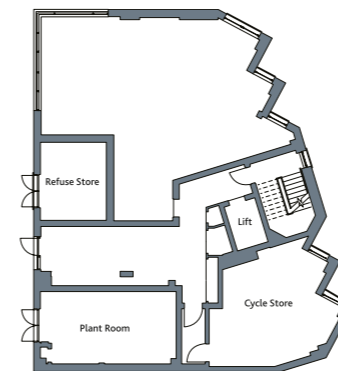


The computer generated illustration is drawn from plan and is indicative only of how the completed building will appear

SITE PLAN



GROUND FLOOR



KEY

- ▶ - ENTRANCE TO BUILDING
- BUILDING D - AFFORDABLE HOUSING

Whilst these floor plans have been prepared with all due care for the convenience of the intending purchaser, the information contained here is a preliminary guide only.

THE PETTICOAT BUILDING FOURTH FLOOR

- KEY**
- + 3 BEDROOM
 - + 2 BEDROOM, 2 BATHS
 - + 2 BEDROOM
 - + 1 BEDROOM
 - + STUDIO



APARTMENT B-13

Living / Dining / Kitchen	19'1" x 15'2"	5820mm x 4620mm
Bedroom 1	12'10" x 11'4"	3920mm x 3450mm
Bedroom 2	18" x 9'7"	5490mm x 2930mm
Bathroom		
Balcony	17'1" x 4'3"	5210mm x 1300mm

Total Internal Area	766 sq ft 71.1 sq m
---------------------	------------------------

APARTMENT B-14

Living / Dining / Kitchen	18' x 17'3"	5490mm x 5260mm
Bedroom 1	12'7" x 9'	3830mm x 2750mm
Bedroom 2	9'10" x 8'6"	3000mm x 2600mm
Bathroom		
Balcony	15'1" x 4'8"	4600mm x 1420mm

Total Internal Area	776 sq ft 72.1 sq m
---------------------	------------------------

APARTMENT B-15

Living / Dining / Kitchen	23'6" x 13'11"	7170mm x 4240mm
Bedroom	16'10" x 8'8"	5120mm x 2650mm
Bathroom		
Balcony	15'1" x 4'3"	4600mm x 1300mm

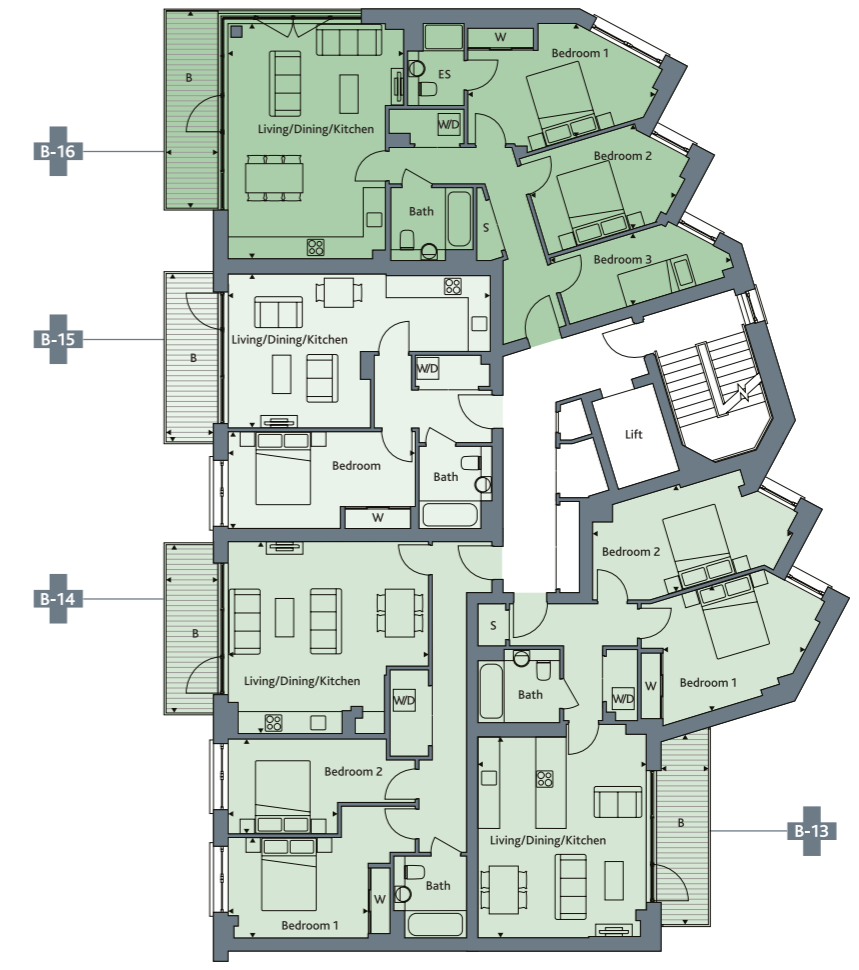
Total Internal Area	545 sq ft 50.6 sq m
---------------------	------------------------

APARTMENT B-16

Living / Dining / Kitchen	21'2" x 16'2"	6450mm x 4930mm
Bedroom 1	16'9" x 10'3"	5110mm x 3130mm
En Suite		
Bedroom 2	13' x 9'9"	3980mm x 2990mm
Bedroom 3	16'3" x 6'6"	4960mm x 1980mm
Bathroom		
Balcony	17'8" x 4'8"	5400mm x 1420mm

Total Internal Area	928 sq ft 86.2 sq m
---------------------	------------------------

HEMING STREET



- KEY**
- T - TERRACE
 - B - BALCONY
 - W/D - WASHER / DRYER
 - W - WARDROBE
 - E/S - EN SUITE
 - S - STORE

Total internal area shown excludes balcony and/or terrace

Whilst these floor plans have been prepared with all due care for the convenience of the intending purchaser, the information contained here is a preliminary guide only

THE PETTICOAT BUILDING

THE PETTICOAT BUILDING

FIFTH FLOOR

- KEY**
- + 3 BEDROOM
 - + 2 BEDROOM, 2 BATHS
 - + 2 BEDROOM
 - + 1 BEDROOM
 - + STUDIO



APARTMENT B-17

Living / Dining / Kitchen	19'1" x 15'2"	5820mm x 4620mm
Bedroom 1	12'10" x 11'4"	3920mm x 3450mm
Bedroom 2	18' x 9'7"	5490mm x 2930mm
Bathroom		
Balcony	17'1" x 4'3"	5210mm x 1300mm

Total Internal Area	766 sq ft 71.1 sq m
---------------------	------------------------

APARTMENT B-18

Living / Dining / Kitchen	18' x 17'3"	5490mm x 5260mm
Bedroom 1	12'7" x 9'	3830mm x 2750mm
Bedroom 2	9'10" x 8'6"	3000mm x 2600mm
Bathroom		
Balcony	15'1" x 4'8"	4600mm x 1420mm

Total Internal Area	776 sq ft 72.1 sq m
---------------------	------------------------

APARTMENT B-19

Living / Dining / Kitchen	23'6" x 13'11"	7170mm x 4240mm
Bedroom	16'10" x 8'8"	5120mm x 2650mm
Bathroom		
Balcony	15'1" x 4'3"	4600mm x 1300mm

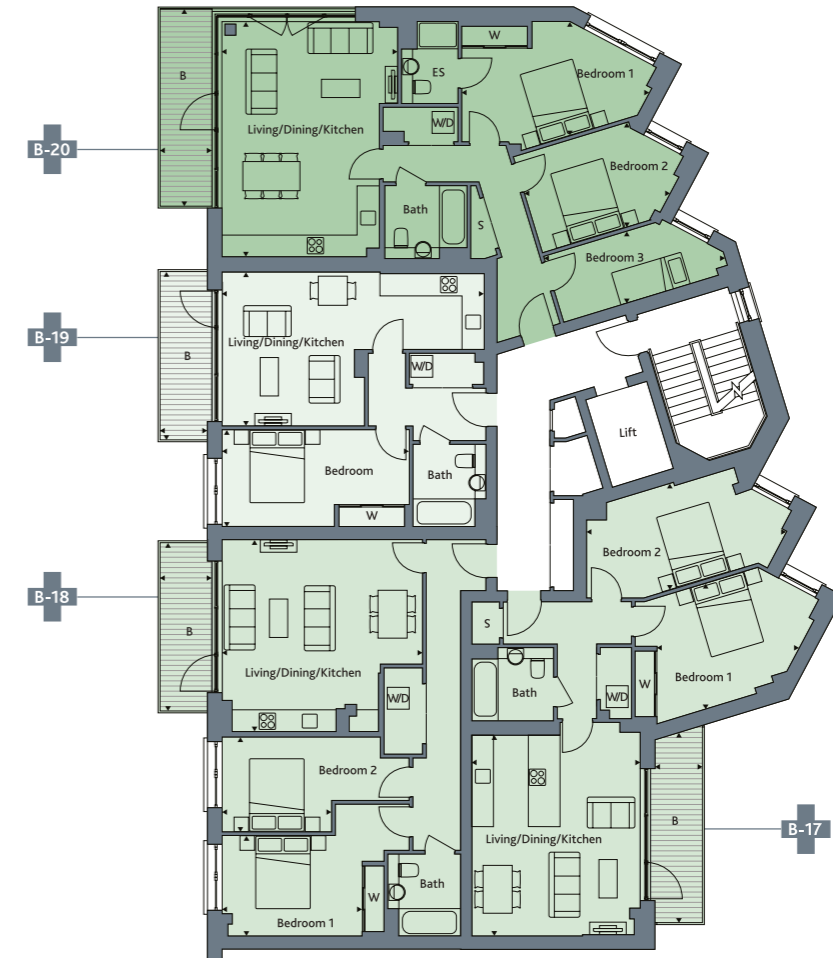
Total Internal Area	545 sq ft 50.6 sq m
---------------------	------------------------

APARTMENT B-20

Living / Dining / Kitchen	21'2" x 16'2"	6450mm x 4930mm
Bedroom 1	16'9" x 10'3"	5110mm x 3130mm
En Suite		
Bedroom 2	13' x 9'9"	3980mm x 2990mm
Bedroom 3	16'3" x 6'6"	4960mm x 1980mm
Bathroom		
Balcony	17'8" x 4'8"	5400mm x 1420mm

Total Internal Area	928 sq ft 86.2 sq m
---------------------	------------------------

HEMING STREET



- KEY**
- T - TERRACE
 - B - BALCONY
 - W/D - WASHER / DRYER
 - W - WARDROBE
 - E/S - EN SUITE
 - S - STORE

Total internal area shown excludes balcony and/or terrace

Whilst these floor plans have been prepared with all due care for the convenience of the intending purchaser, the information contained here is a preliminary guide only

THE PETTICOAT BUILDING

THE PETTICOAT BUILDING

SIXTH FLOOR

- KEY**
- + 3 BEDROOM
 - + 2 BEDROOM, 2 BATHS
 - + 2 BEDROOM
 - + 1 BEDROOM
 - + STUDIO



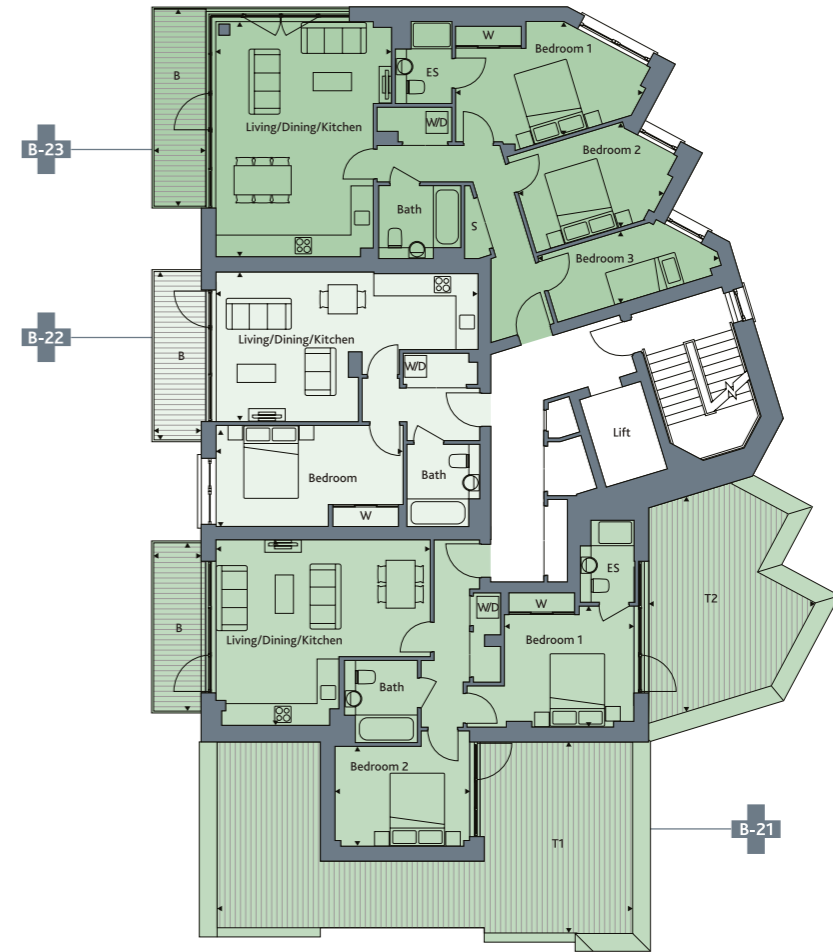
APARTMENT B-21		
Living / Dining / Kitchen	19'3" x 5870mm	16'8" x 5090mm
Bedroom 1	11'8" x 3550mm	10'11" x 3320mm
En Suite		
Bedroom 2	12'1" x 3690mm	9' x 2740mm
Bathroom		
Balcony	15'1" x 4600mm	4'8" x 1420mm
Terrace 1	37'4" x 11380mm	17'2" x 5250mm
Terrace 2	19'4" x 5900mm	15' x 4570mm
Total Internal Area	744 sq ft / 69.1 sq m	

APARTMENT B-22		
Living / Dining / Kitchen	23'6" x 7170mm	13'11" x 4240mm
Bedroom	16'10" x 5120mm	8'8" x 2650mm
Bathroom		
Balcony	15'1" x 4600mm	4'3" x 1300mm
Total Internal Area	545 sq ft / 50.6 sq m	

APARTMENT B-23		
Living / Dining / Kitchen	21'2" x 6450mm	16'2" x 4930mm
Bedroom 1	16'9" x 5110mm	10'3" x 3130mm
En Suite		
Bedroom 2	13' x 3980mm	9'9" x 2990mm
Bedroom 3	16'3" x 4960mm	6'6" x 1980mm
Bathroom		
Balcony	17'8" x 5400mm	4'8" x 1420mm
Total Internal Area	928 sq ft / 86.2 sq m	

Total internal area shown excludes balcony and/or terrace

HEMING STREET



- KEY**
- T - TERRACE
 - B - BALCONY
 - W/D - WASHER / DRYER
 - W - WARDROBE
 - E/S - EN SUITE
 - S - STORE

Whilst these floor plans have been prepared with all due care for the convenience of the intending purchaser, the information contained here is a preliminary guide only

THE PETTICOAT BUILDING

THE PETTICOAT BUILDING SEVENTH FLOOR

- KEY**
- + 3 BEDROOM
 - + 2 BEDROOM, 2 BATHS
 - + 2 BEDROOM
 - + 1 BEDROOM
 - + STUDIO

APARTMENT B-24

Living / Dining / Kitchen 25'2" x 15'4"
7690mm x 4670mm

Bedroom 1 11'9" x 11'2"
3580mm x 3400mm

En Suite

Bedroom 2 14'7" x 11'
4460mm x 3350mm

Bedroom 3 10'7" x 9'
3240mm x 2750mm

Bathroom

Terrace 1 43'3" x 4'1"
13190mm x 1260mm

Terrace 2 11'9" x 9'7"
3580mm x 2930mm

Total Internal Area 1033 sq ft
96 sq m

Total internal area shown excludes balcony and or terrace



HEMING STREET



- KEY**
- T - TERRACE
 - B - BALCONY
 - W/D - WASHER / DRYER
 - W - WARDROBE
 - E/S - EN SUITE
 - S - STORE

Whilst these floor plans have been prepared with all due care for the convenience of the intending purchaser, the information contained here is a preliminary guide only

THE PETTICOAT BUILDING

SPECIFICATION + FINISHES

KITCHEN

Handleless fitted kitchens by Commodore with dual tone finish

Quality appliances by Smeg to include stainless steel multi-function electric oven and induction hob with inline telescopic extractor hood

Integrated Smeg appliances to include fridge / freezer and dishwasher

Integrated Smeg washer / dryer within kitchen or freestanding washer / dryer within storage cupboard in entrance hall

Composite stone work surface

Under mounted stainless steel sink with mixer tap and independent stainless steel drainer

Glass splash back, generally from work surface to underside of wall cupboards

Recessed under unit LED lighting

BATHROOMS AND EN SUITE

Contemporary sanitary ware in white with chrome fittings

Duravit Starck 3 semi countertop basin with pop up waste

Duravit Starck 3 wall hung W/C with concealed system

Steel enamel bath with tiled bath panel

Hans Grohe Axor mixer taps

Hans Grohe Raindance Air shower head

Glass shower screen and shower over bath

European wall tiling to selected areas

Recessed towel box and matching countertop with full height glass mirror above

Heated towel rail – chrome finish

Mechanical ventilation system with Vectaire fans

Shaver point – polished chrome finish

WARDROBE

Fitted wardrobe with sliding doors to bedroom one

HEATING

Underfloor heating with zoned thermostats powered by communal central gas boilers (District Heating System) via a heat interface with separate metering unit

WINDOWS

Powder coated aluminium framed double glazed sealed units

FINISHES

Painted walls and ceilings with white emulsion finish. White satinwood paint to internal joinery

Contemporary square edged architrave and skirting boards with square routed shadow detail

White painted internal doors

Latch ironmongery – polished chrome finish

SECURITY

Security entry phone system with visual monitor

Mains operated smoke detector

Wiring for intruder alarm system

HOME ENTERTAINMENT / COMMUNICATIONS

TV / FM outlet points to living room and bedrooms

Telephone outlet points to living room and bedrooms

Communal satellite aerial (Sky) – purchaser's own decoder required

Communal terrestrial digital television aerial

Connected to hyperfast fibre broadband from Hyperoptic – purchaser subscription required

LIGHTING

Recessed ceiling down lighters to living room / kitchen, bedroom one, bathroom and en suite and entrance hall

Pendant lighting to all other bedrooms

Five amp ambient lighting circuit to living room and bedroom one

FLOORING

Recessed coir matting to entrance hall

Engineered hardwood flooring to entrance hall and living room / kitchen

Fitted carpet to bedrooms *

Engineered hardwood flooring to studio bed area

Ceramic tiled flooring to bathroom and en suite

COMMUNAL FACILITIES

Communal passenger lift with brushed stainless steel lift car

Smooth plastered walls and ceramic tiled flooring to communal entrance foyer, fitted carpet to communal hallways and staircase

Communal cycle store

Communal roof terrace to the 7th floor of The The Roman Building and The The Petticoat Building

DESIGN STANDARDS

Constructed in compliance with:

Level 4 of the Code for Sustainable Homes
London Housing Design Guide
Lifetime Homes Standards
Secure By Design

WARRANTY

Ten year NHBC warranty

*Choice to be available subject to the stage of construction.

The Company employs a policy of continuous improvement and it reserves the right to alter or amend the specification as necessary and without prior notice.

The computer generated illustration is drawn from plan and is indicative only of how the completed building will appear.



Image shown is a previous Higgins Homes interior



Image shown is a previous Higgins Homes interior



OUR CRAFTED DEVELOPMENTS

When choosing a new home, whether it's your first time or a next step up the ladder, at Higgins Homes we understand the importance of individuality, reliability and, above all, quality.

Since our family run business began designing and building homes over 50 years ago, Higgins Homes has become a well-respected name across London and the South East, winning numerous industry awards and establishing a reputation for excellence along the way.

Our approach is simple. Whether it's a contemporary urban apartment or rural family home, new build or sensitive restoration, every Higgins Homes development is crafted with care and attention to detail, from the desirable locations and stand-out architectural design to the finishing touches that make all the difference.



Clissold Quarter, Stoke Newington, London, N4



Q, Peckham, London, SE15



Oval Quarter, Oval, London, SW9



020 8023 9588
120 Vallance Road
London, E1 5BW

Whilst these particulars and plans are prepared with all due care for the convenience of intending purchasers, the information contained herein is a preliminary guide only. Neither the vendors, nor their agents or any persons in their employ has any authority to make or give representation, warranty or guarantee (whether oral or written) in respect of, or in relation to the development or any part thereof. The computer generated illustrations are drawn from plan and are indicative only of how the completed development will appear. The company employs a policy of continuous improvement and it reserves the right to alter or amend the specification as necessary and without prior notice. White + Green is a marketing name and may or may not be adopted as the postal address. Prices, ground rents and estimated service charges are subject to contract.

Higgins
The logo features the word "Higgins" in a bold, black, sans-serif font. The two 'o's in "Higgins" are stylized as circles. Below the 'o's, there are two horizontal blue bars: one under the first 'o' and one under the second 'o'.