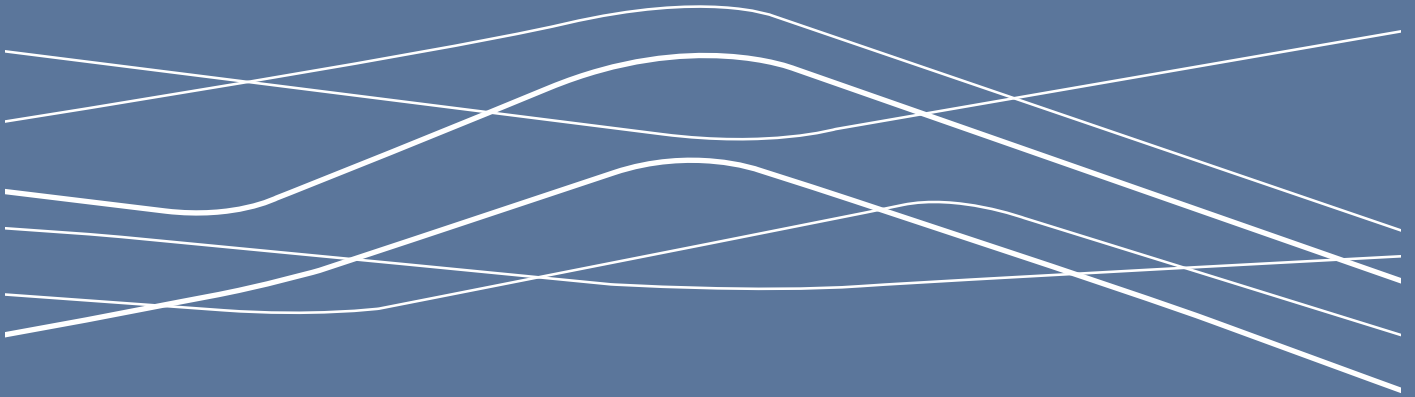


MOTION

LEA BRIDGE LONDON E10



STARLEY RISE

STARLEY RISE
MOTION



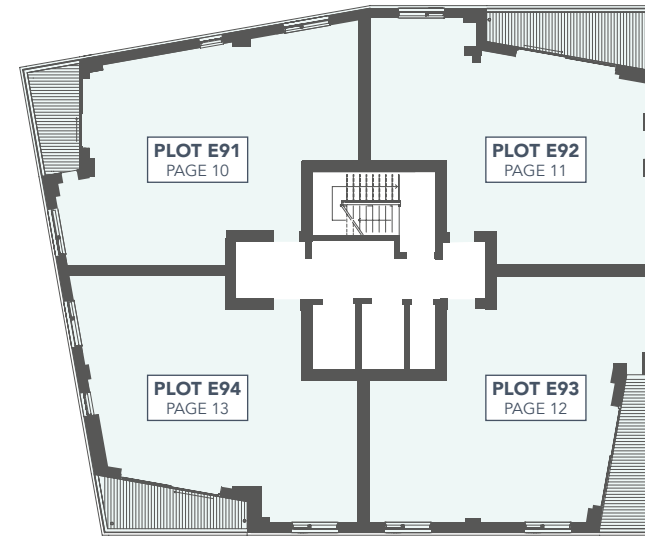
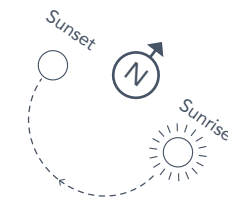
Welcome to Starley Rise at Motion

As you look from your balcony towards one of the world's most exciting cities, you'll find that life in Motion never stands still.

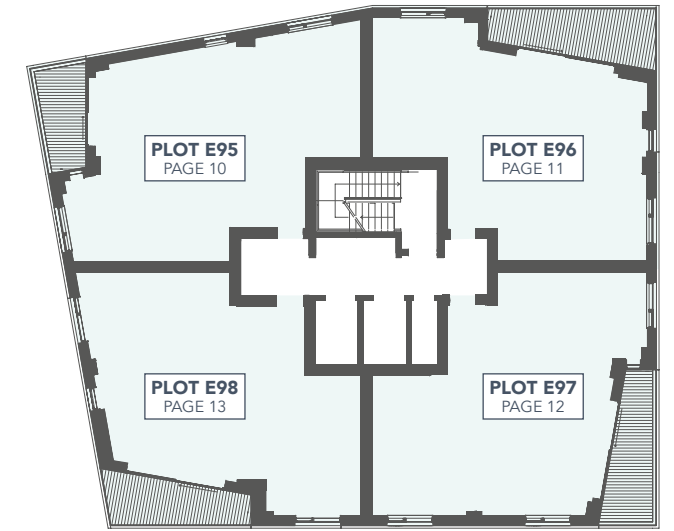
Across the 11 floors of Starley House, which twists elegantly as it rises, you'll find 42 contemporary, one and two-bedroom apartments that offer comfortable urban living within easy reach of central London.

Welcome home to life in Motion.

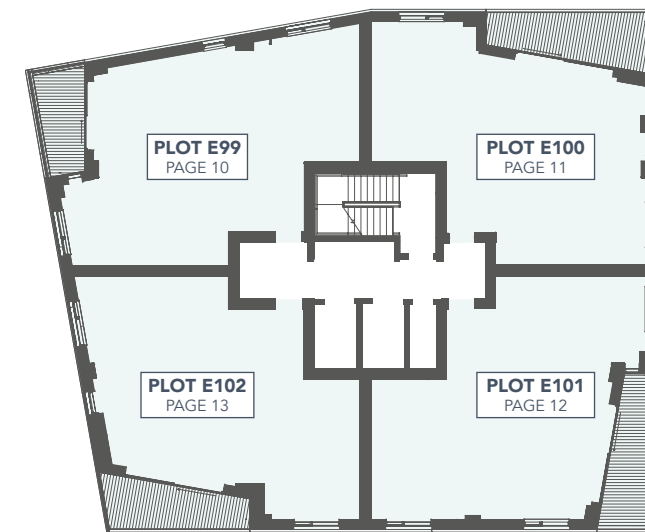
STARLEY RISE



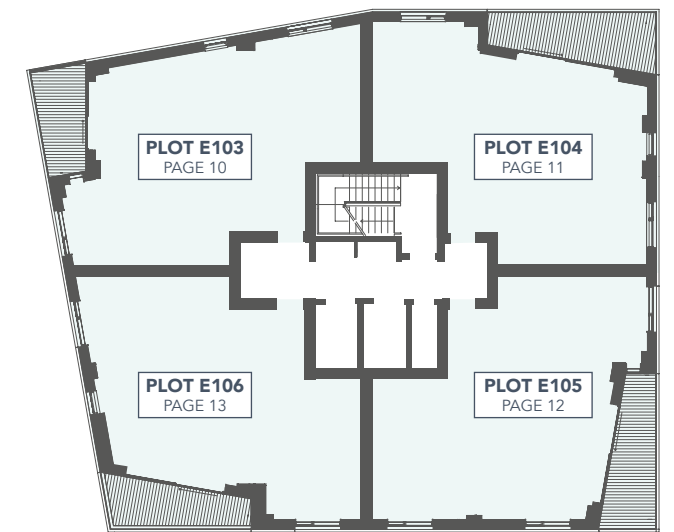
FIRST FLOOR



SECOND FLOOR



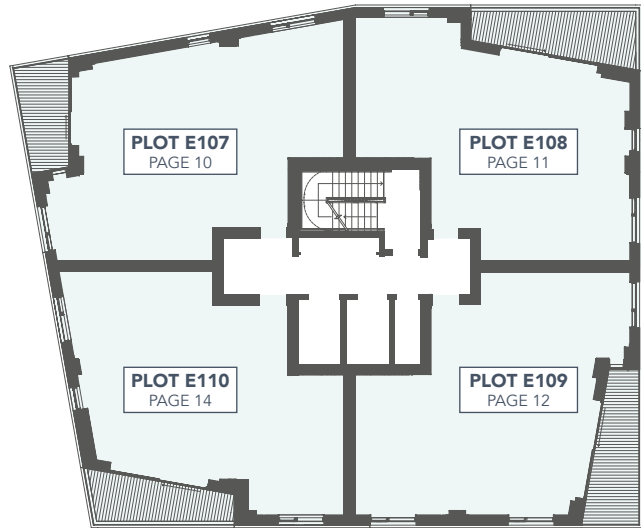
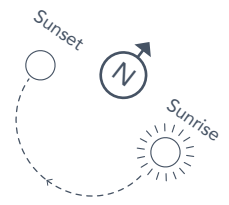
THIRD FLOOR



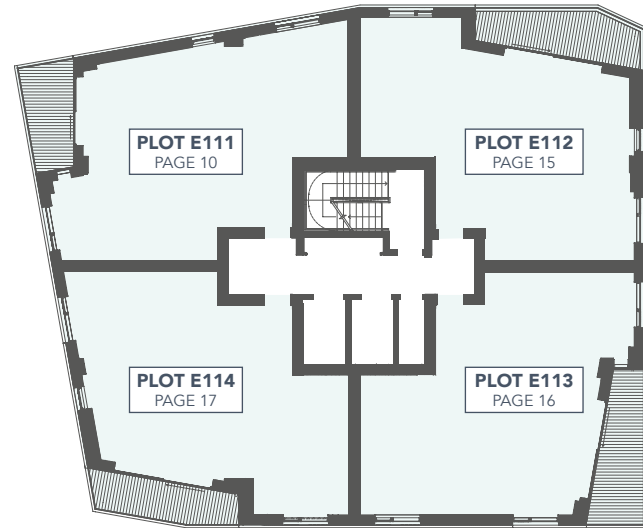
FOURTH FLOOR

ONE BEDROOM TWO BEDROOM

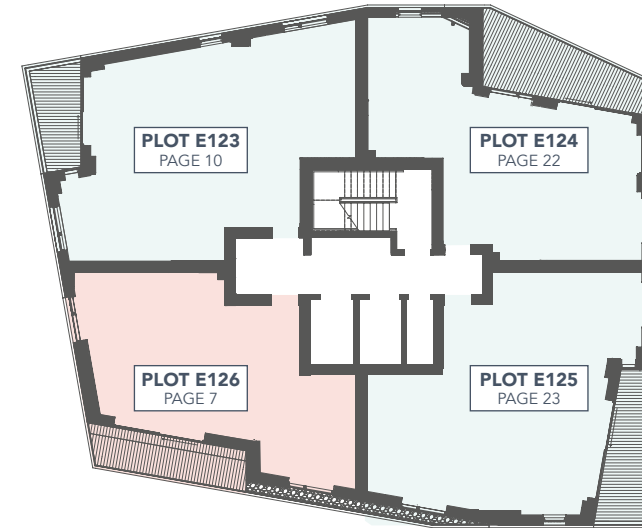
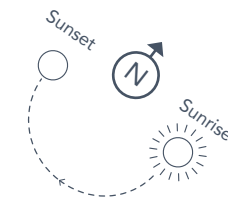
STARLEY RISE



FIFTH FLOOR



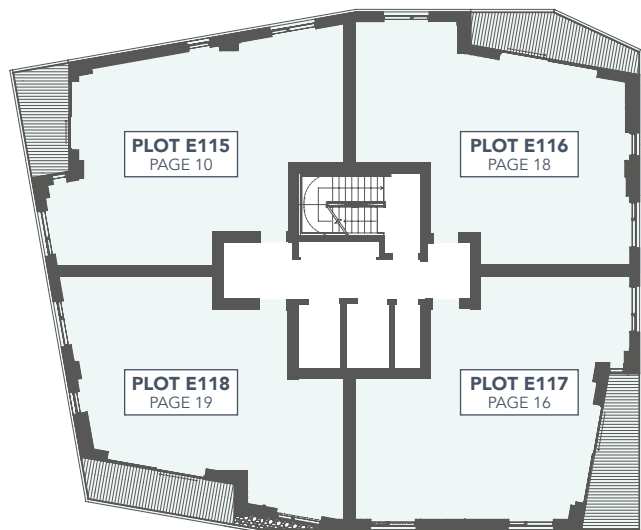
SIXTH FLOOR



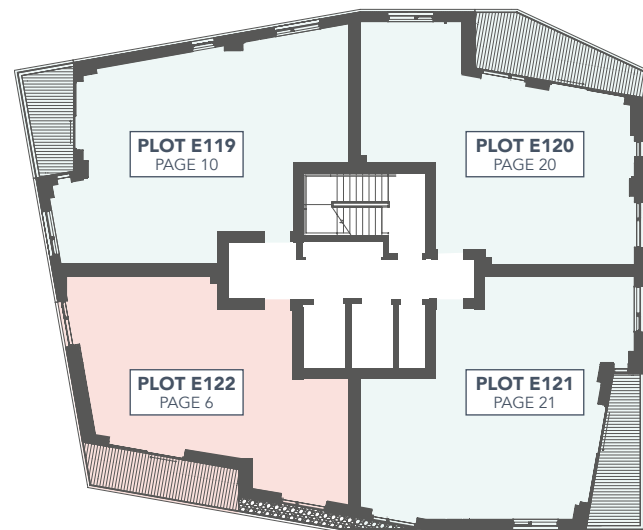
NINTH FLOOR



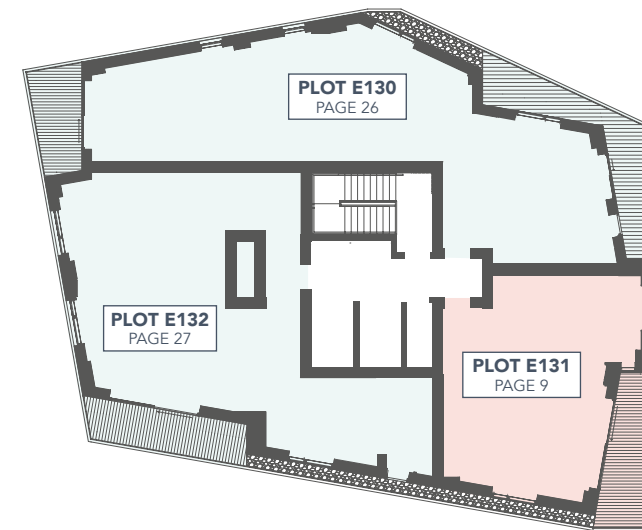
TENTH FLOOR



SEVENTH FLOOR



EIGHTH FLOOR



ELEVENTH FLOOR

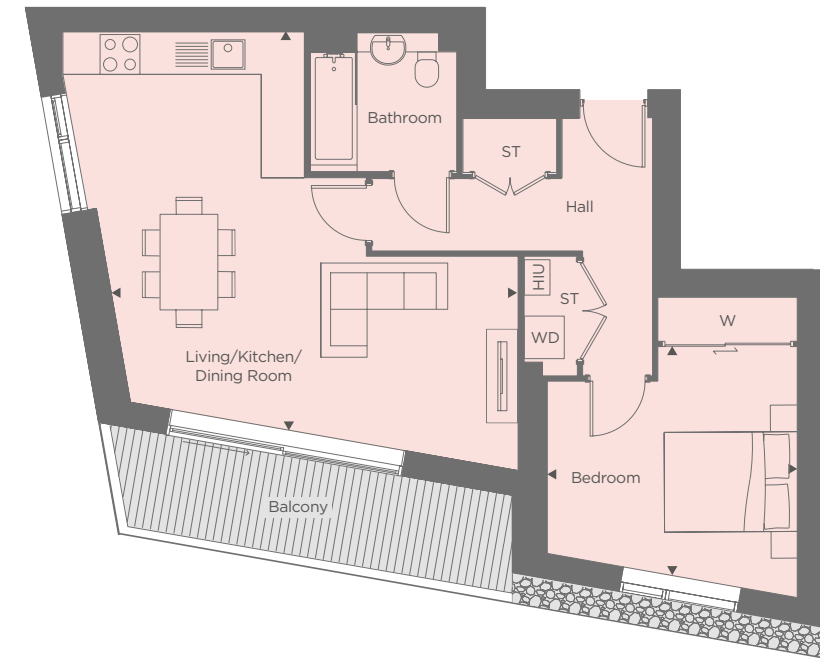
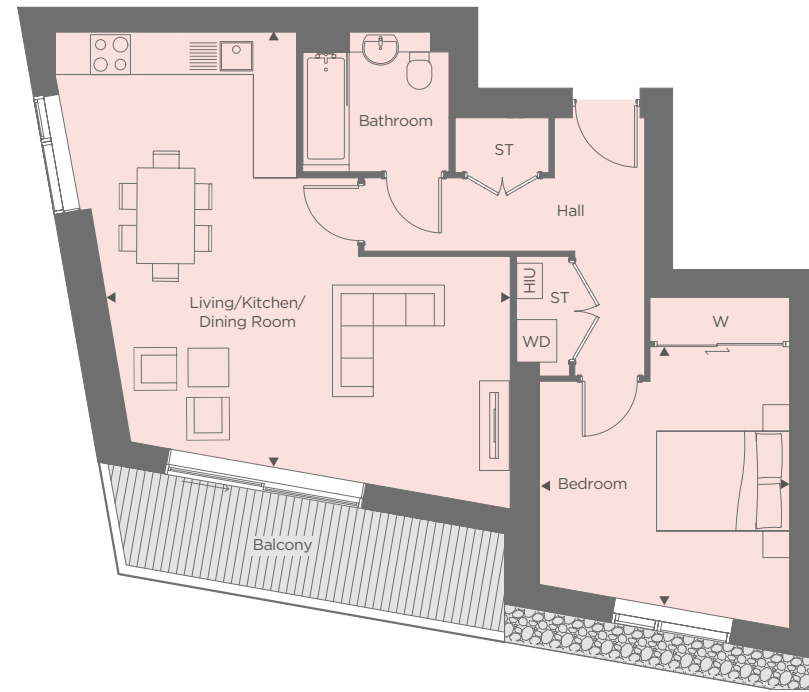
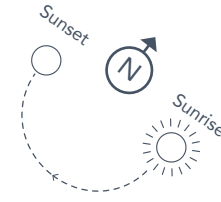
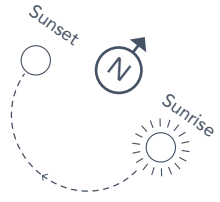
ONE BEDROOM TWO BEDROOM

PLOT E122
1 BEDROOM

Living/Kitchen/Dining	6.05 x 6.50	19'10 x 21'3
Bedroom	3.70 x 3.85	12'1 x 12'7

PLOT E126
1 BEDROOM

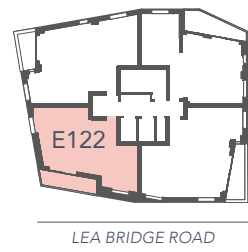
Living/Kitchen/Dining	6.05 x 5.95	19'10 x 19'6
Bedroom	3.70 x 3.40	12'1 x 11'1



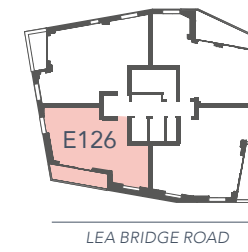
▶ Measuring points WD - Washer Dryer W - Wardrobe HIU - Heat Interface Unit ST - Storage

▶ Measuring points WD - Washer Dryer W - Wardrobe HIU - Heat Interface Unit ST - Storage

EIGHTH FLOOR



NINTH FLOOR

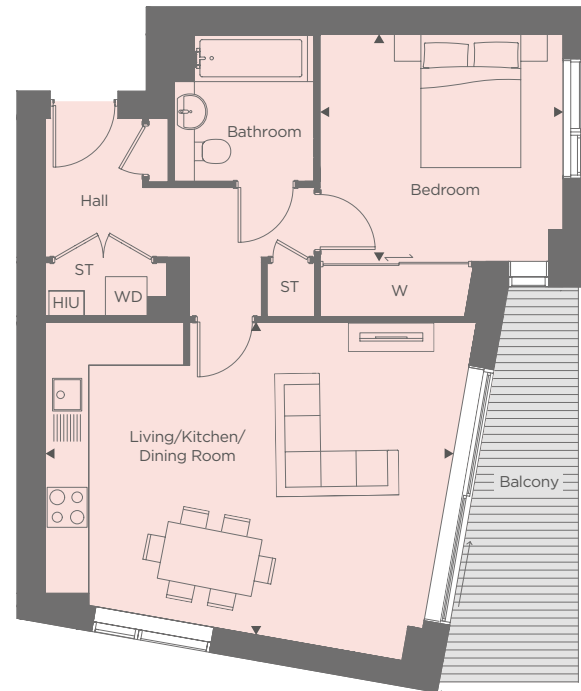
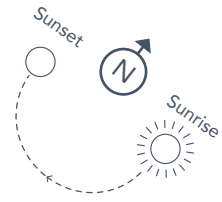


Apartment layouts provide approximate measurements only and are subject to planning. Dimensions, which are taken from the indicated points of measurement, are for guidance only and are not intended to be used for window treatments or items of furniture. Bathroom and kitchen layouts are indicative only and are subject to change. Wardrobe size and position may vary. The information contained within this document does not constitute part of any offer, contract or warranty. Whilst the plans have been prepared with all due care for the convenience of the intending purchaser, the information contained herein is a preliminary guide only.

Apartment layouts provide approximate measurements only and are subject to planning. Dimensions, which are taken from the indicated points of measurement, are for guidance only and are not intended to be used for window treatments or items of furniture. Bathroom and kitchen layouts are indicative only and are subject to change. Wardrobe size and position may vary. The information contained within this document does not constitute part of any offer, contract or warranty. Whilst the plans have been prepared with all due care for the convenience of the intending purchaser, the information contained herein is a preliminary guide only.

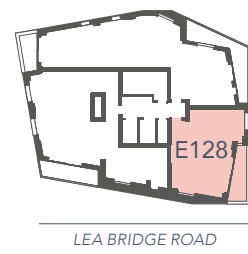
PLOT E128
1 BEDROOM

Living/Kitchen/Dining	6.10 x 4.65	20'0 x 15'3
Bedroom	3.60 x 3.40	11'9 x 11'1



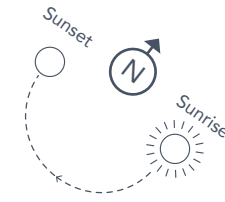
▶ Measuring points WD - Washer Dryer W - Wardrobe HIU - Heat Interface Unit ST - Storage

TENTH FLOOR



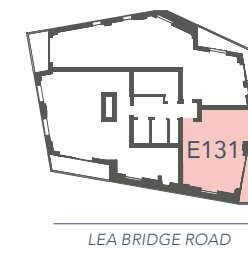
PLOT E131
1 BEDROOM

Living/Kitchen/Dining	6.10 x 4.15	20'0 x 13'7
Bedroom	3.60 x 3.40	11'9 x 11'1



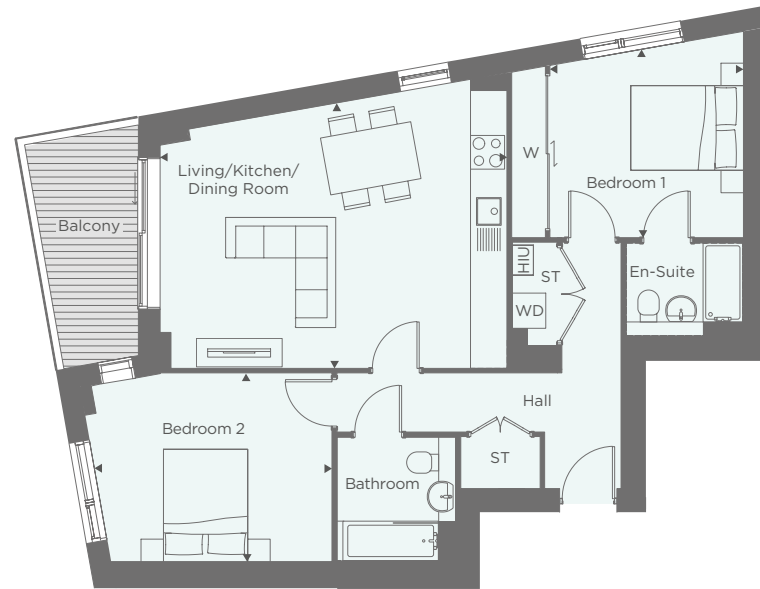
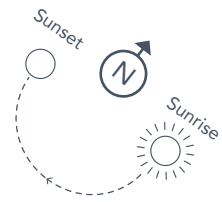
▶ Measuring points WD - Washer Dryer W - Wardrobe HIU - Heat Interface Unit ST - Storage

ELEVENTH FLOOR

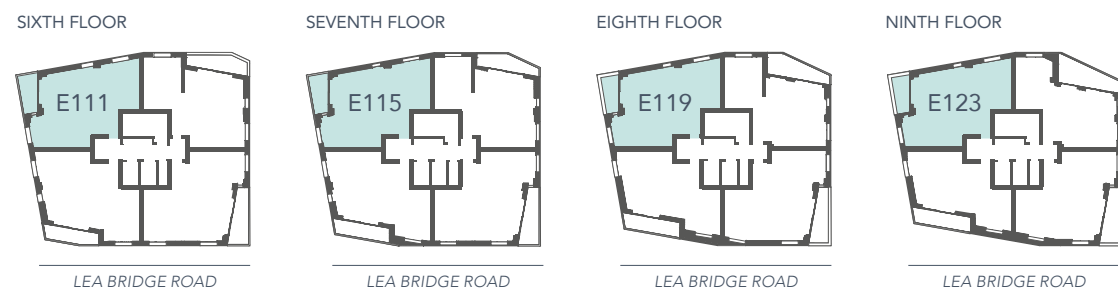
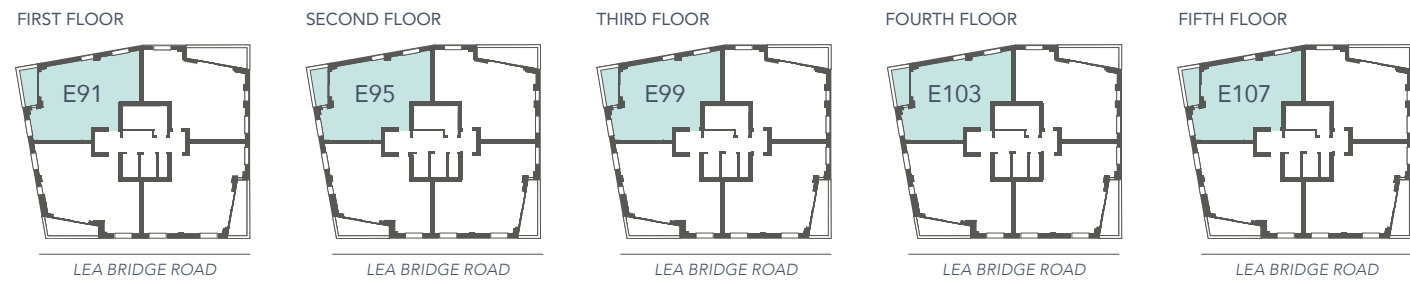


**PLOT E91, E95, E99, E103,
E107, E111, E115, E119, E123**
2 BEDROOM

Living/Kitchen/Dining	6.15 x 4.70	20'2 x 15'5
Bedroom 1	3.40 x 3.35	11'1 x 10'11
Bedroom 2	4.15 x 3.35	13'7 x 10'11

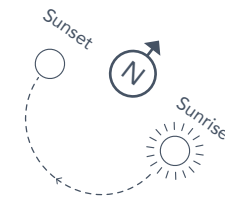


► Measuring points WD - Washer Dryer W - Wardrobe HIU - Heat Interface Unit ST - Storage

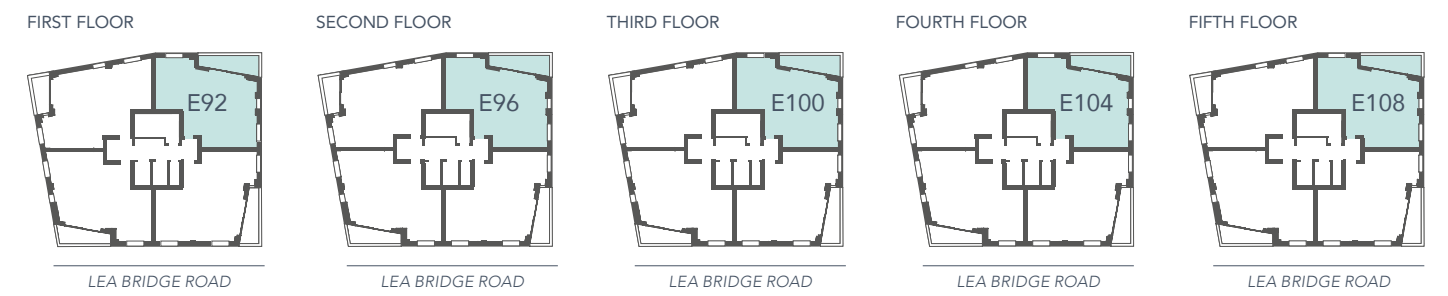


PLOT E92, E96, E100, E104, E108
2 BEDROOM

Living/Kitchen/Dining	6.40 x 4.10	20'11 x 13'5
Bedroom 1	3.50 x 3.75	11'5 x 12'3
Bedroom 2	3.60 x 3.35	11'9 x 10'11

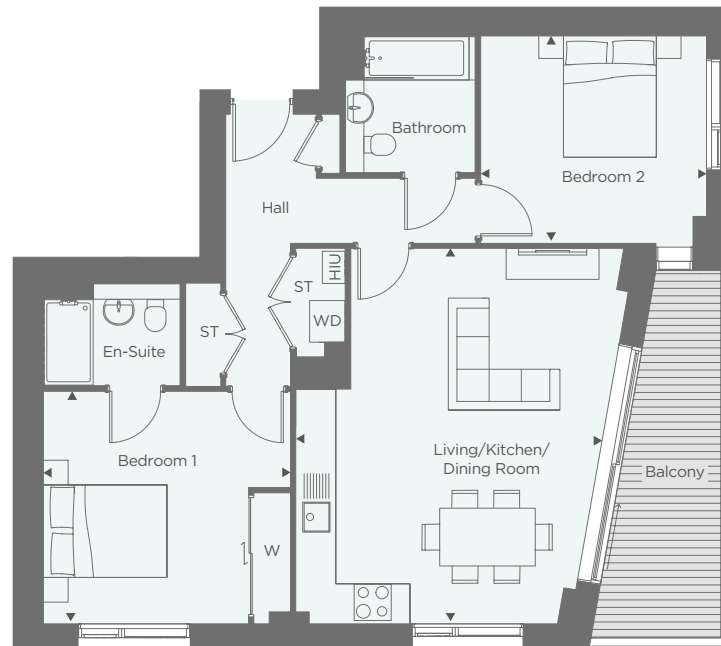
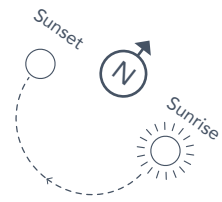


► Measuring points WD - Washer Dryer W - Wardrobe HIU - Heat Interface Unit ST - Storage



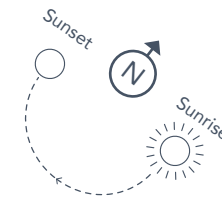
PLOT E93, E97, E101, E105, E109
2 BEDROOM

Living/Kitchen/Dining	4.95 x 6.05	16'2 x 19'10
Bedroom 1	4.00 x 3.70	13'1 x 12'1
Bedroom 2	3.60 x 3.35	11'9 x 10'11

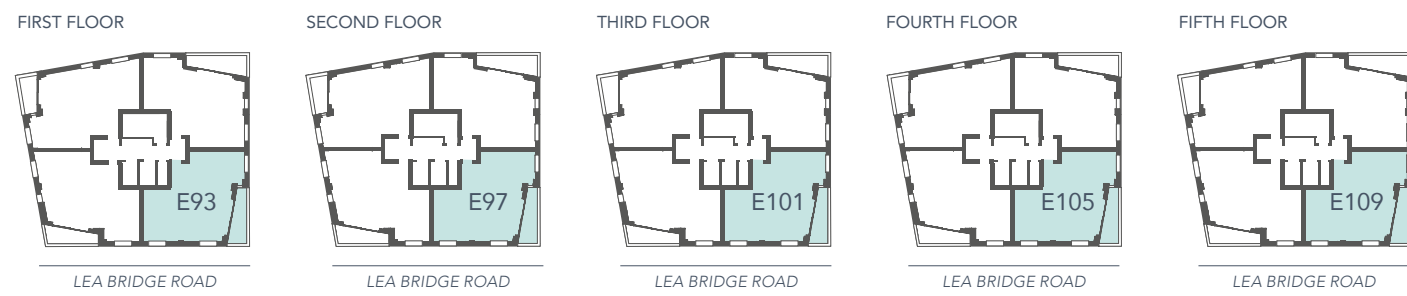


PLOT E94, E98, E102, E106
2 BEDROOM

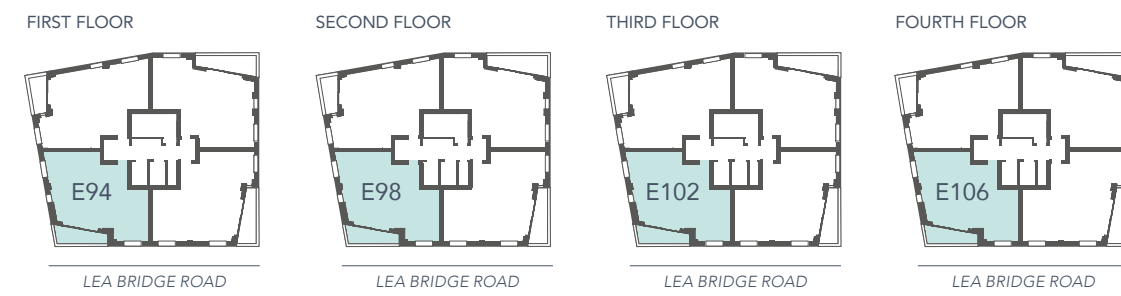
Living/Kitchen/Dining	5.70 x 4.35	18'8 x 14'3
Bedroom 1	3.65 x 3.70	11'11 x 12'1
Bedroom 2	3.50 x 3.35	11'5 x 10'11



► Measuring points WD - Washer Dryer W - Wardrobe HIU - Heat Interface Unit ST - Storage

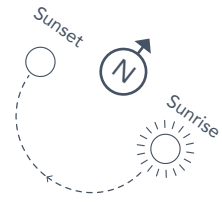


► Measuring points WD - Washer Dryer W - Wardrobe HIU - Heat Interface Unit ST - Storage



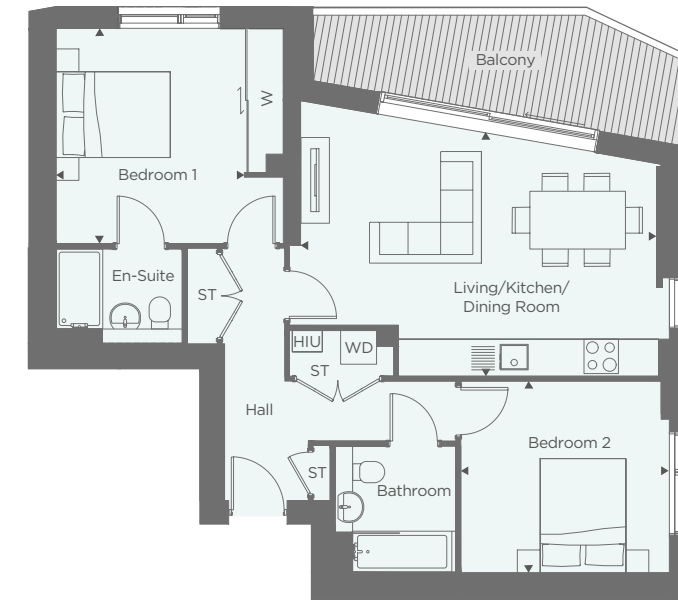
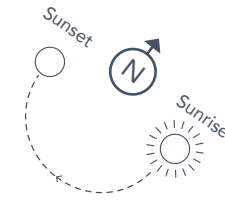
PLOT E110
2 BEDROOM

Living/Kitchen/Dining	5.70 x 4.35	18'8 x 14'3
Bedroom 1	3.75 x 3.70	12'3 x 12'1
Bedroom 2	3.50 x 3.35	11'5 x 10'11



PLOT E112
2 BEDROOM

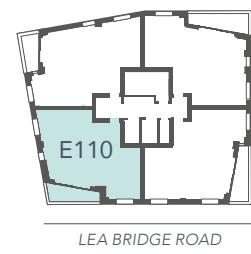
Living/Kitchen/Dining	6.25 x 4.25	20'6 x 13'11
Bedroom 1	3.25 x 3.75	10'7 x 12'3
Bedroom 2	3.60 x 3.35	11'9 x 10'11



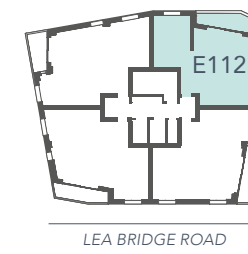
► Measuring points WD - Washer Dryer W - Wardrobe HIU - Heat Interface Unit ST - Storage

► Measuring points WD - Washer Dryer W - Wardrobe HIU - Heat Interface Unit ST - Storage

FIFTH FLOOR

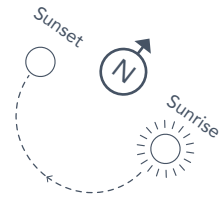


SIXTH FLOOR



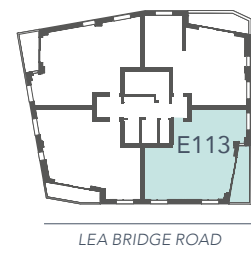
PLOT E113, E117
2 BEDROOM

Living/Kitchen/Dining	4.70 x 6.05	15'5 x 19'10
Bedroom 1	3.95 x 3.70	12'11 x 12'1
Bedroom 2	3.60 x 3.35	11'9 x 10'11

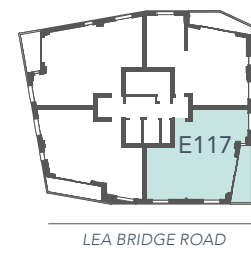


▶ Measuring points WD - Washer Dryer W - Wardrobe HIU - Heat Interface Unit ST - Storage

SIXTH FLOOR

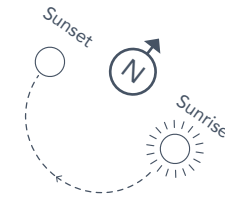


SEVENTH FLOOR



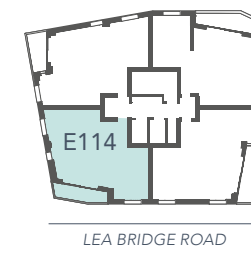
PLOT E114
2 BEDROOM

Living/Kitchen/Dining	5.75 x 4.35	18'10 x 14'3
Bedroom 1	3.75 x 3.70	12'3 x 12'1
Bedroom 2	3.50 x 3.35	11'5 x 10'11



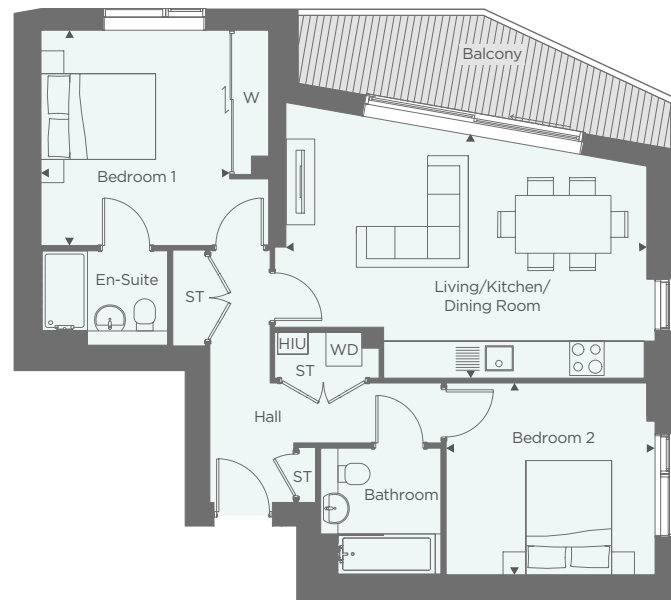
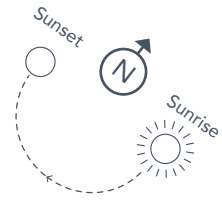
▶ Measuring points WD - Washer Dryer W - Wardrobe HIU - Heat Interface Unit ST - Storage

SIXTH FLOOR



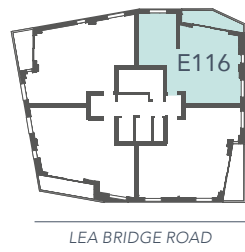
PLOT E116
2 BEDROOM

Living/Kitchen/Dining	6.25 x 4.25	20'6 x 13'11
Bedroom 1	3.25 x 3.75	10'7 x 12'3
Bedroom 2	3.60 x 3.35	11'9 x 10'11



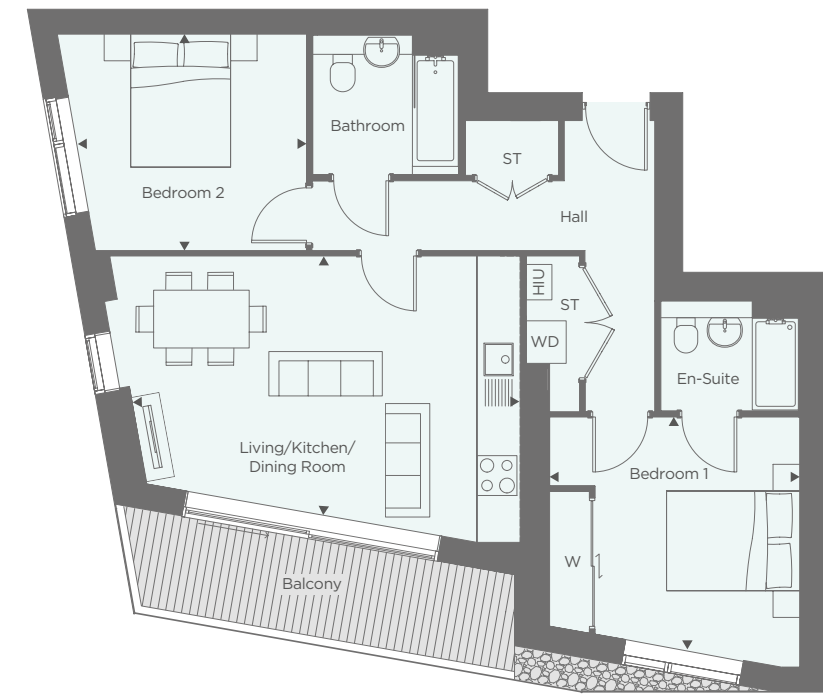
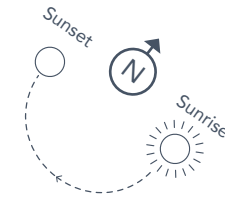
▶ Measuring points WD - Washer Dryer W - Wardrobe HIU - Heat Interface Unit ST - Storage

SEVENTH FLOOR



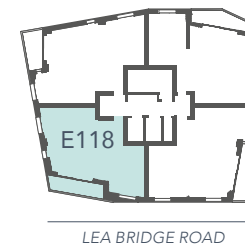
PLOT E118
2 BEDROOM

Living/Kitchen/Dining	5.80 x 3.85	19'0 x 12'7
Bedroom 1	3.70 x 3.45	12'1 x 11'3
Bedroom 2	3.40 x 3.25	11'1 x 10'7



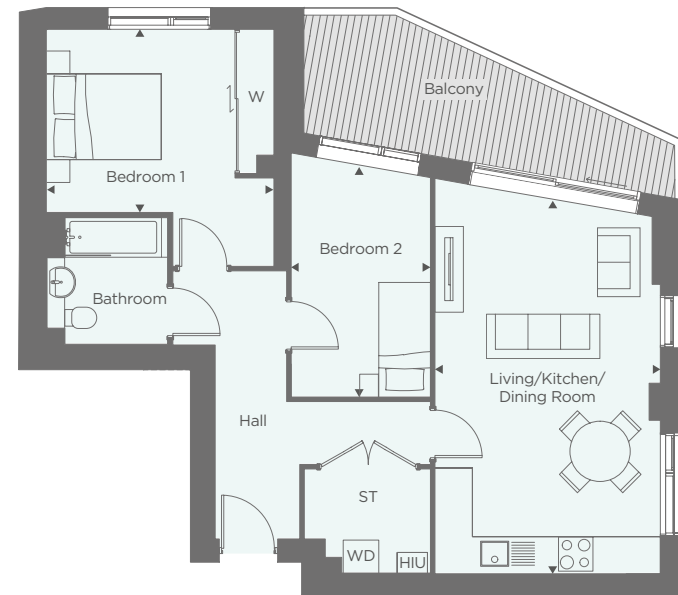
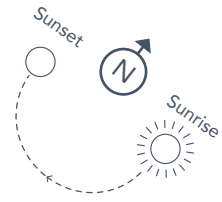
▶ Measuring points WD - Washer Dryer W - Wardrobe HIU - Heat Interface Unit ST - Storage

SEVENTH FLOOR



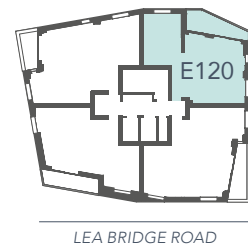
PLOT E120
2 BEDROOM

Living/Kitchen/Dining	3.90 x 6.55	12'9" x 21'5"
Bedroom 1	3.95 x 3.20	12'9" x 10'5"
Bedroom 2	2.40 x 4.00	7'10" x 13'1"



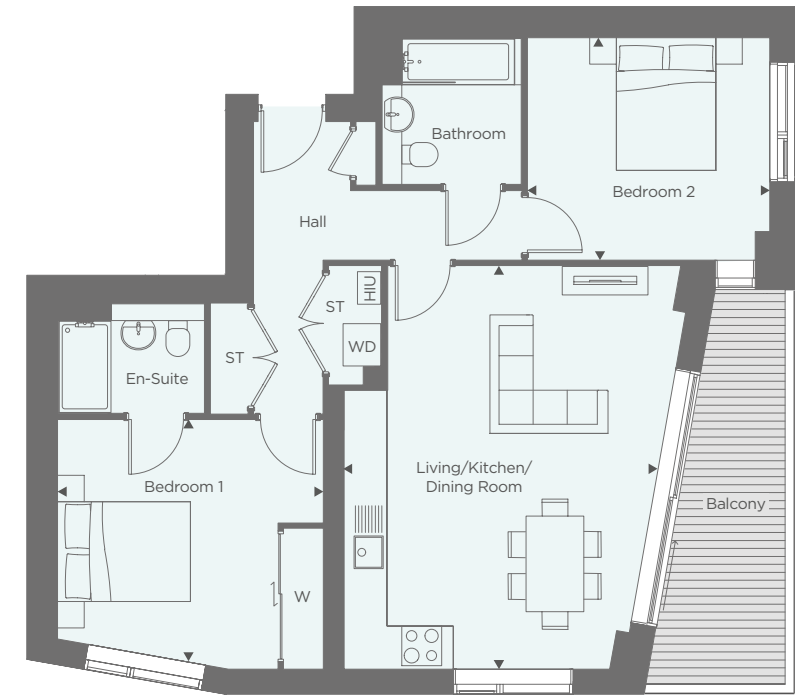
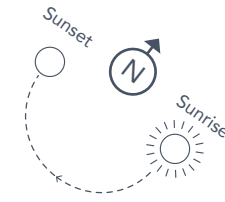
► Measuring points WD - Washer Dryer W - Wardrobe HIU - Heat Interface Unit ST - Storage

EIGHTH FLOOR



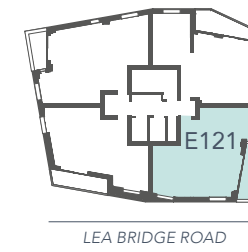
PLOT E121
2 BEDROOM

Living/Kitchen/Dining	4.70 x 6.05	15'5" x 19'10"
Bedroom 1	3.95 x 3.60	12'11" x 11'9"
Bedroom 2	3.60 x 3.35	11'9" x 10'11"



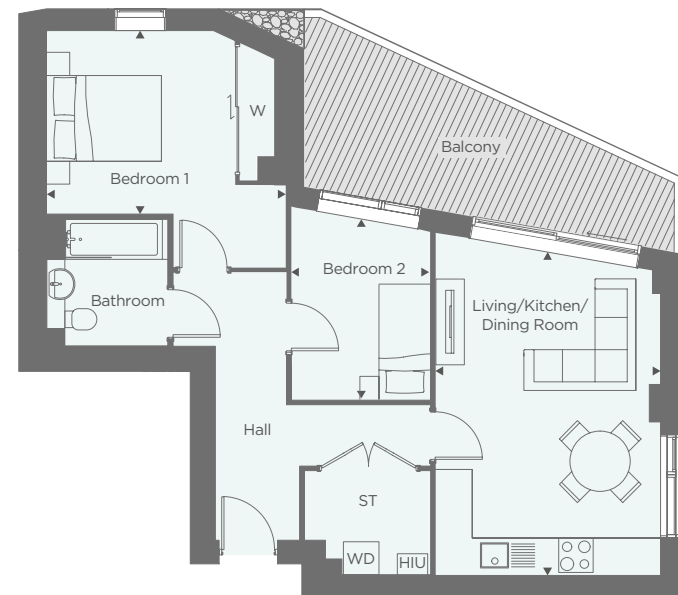
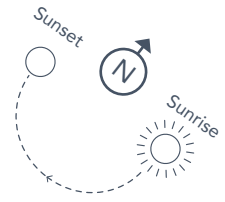
► Measuring points WD - Washer Dryer W - Wardrobe HIU - Heat Interface Unit ST - Storage

EIGHTH FLOOR



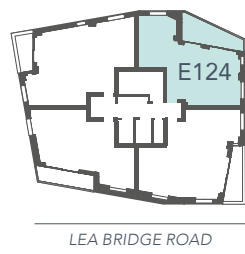
PLOT E124
2 BEDROOM

Living/Kitchen/Dining	3.90 x 5.65	12'9 x 18'6
Bedroom 1	4.10 x 3.20	13'5 x 10'5
Bedroom 2	2.50 x 3.15	8'2 x 10'4



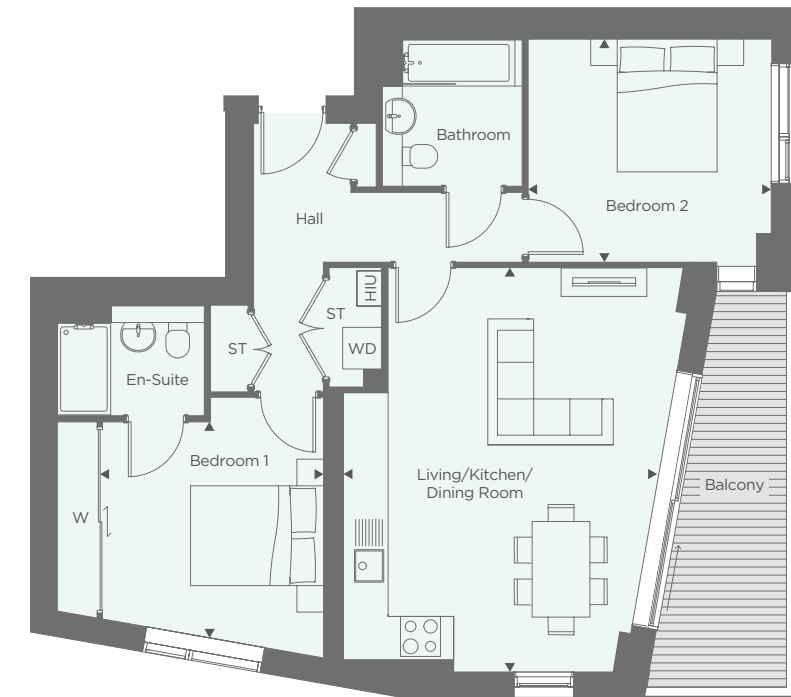
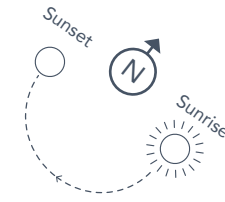
► Measuring points WD - Washer Dryer W - Wardrobe HIU - Heat Interface Unit ST - Storage

NINTH FLOOR



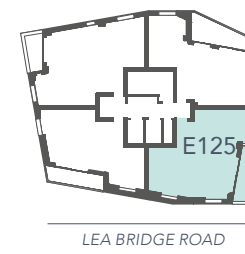
PLOT E125
2 BEDROOM

Living/Kitchen/Dining	4.70 x 6.05	15'5 x 19'10
Bedroom 1	3.25 x 3.20	10'7 x 10'5
Bedroom 2	3.60 x 3.35	11'9 x 10'11



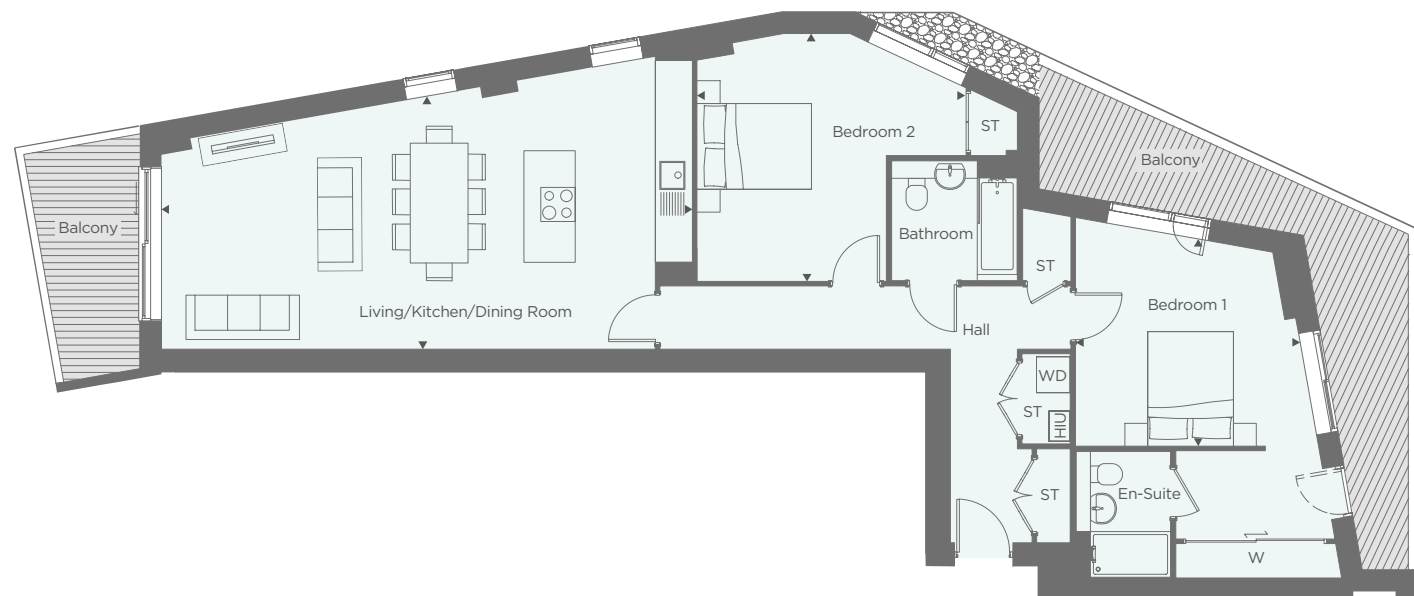
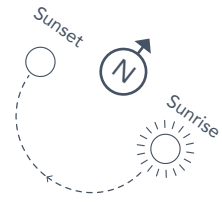
► Measuring points WD - Washer Dryer W - Wardrobe HIU - Heat Interface Unit ST - Storage

NINTH FLOOR



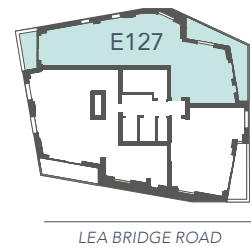
PLOT E127
2 BEDROOM

Living/Kitchen/Dining	9.25 x 4.40	30'4 x 14'5
Bedroom 1	3.75 x 3.60	12'3 x 11'9
Bedroom 2	4.70 x 4.30	15'5 x 14'1



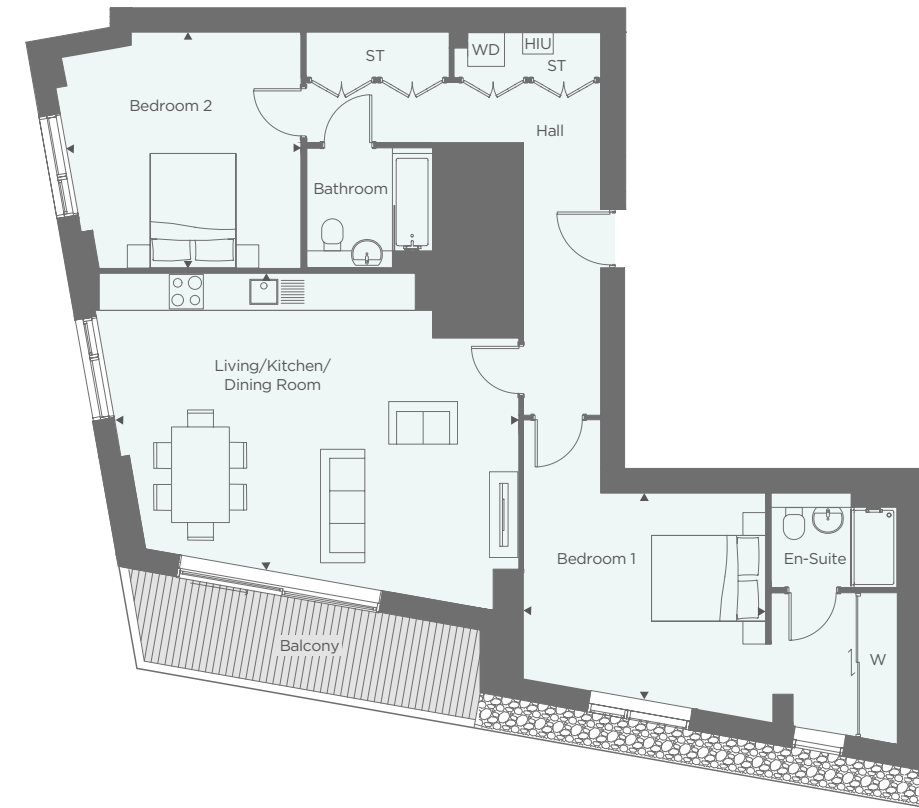
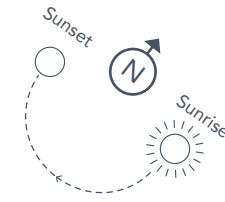
► Measuring points WD - Washer Dryer W - Wardrobe HIU - Heat Interface Unit ST - Storage

TENTH FLOOR



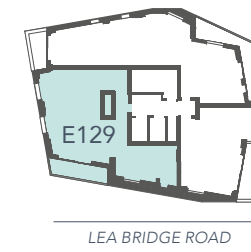
PLOT E129
2 BEDROOM

Living/Kitchen/Dining	7.00 x 5.15	22'11 x 16'10
Bedroom 1	4.20 x 3.60	13'9 x 11'9
Bedroom 2	4.05 x 4.10	13'3 x 13'5



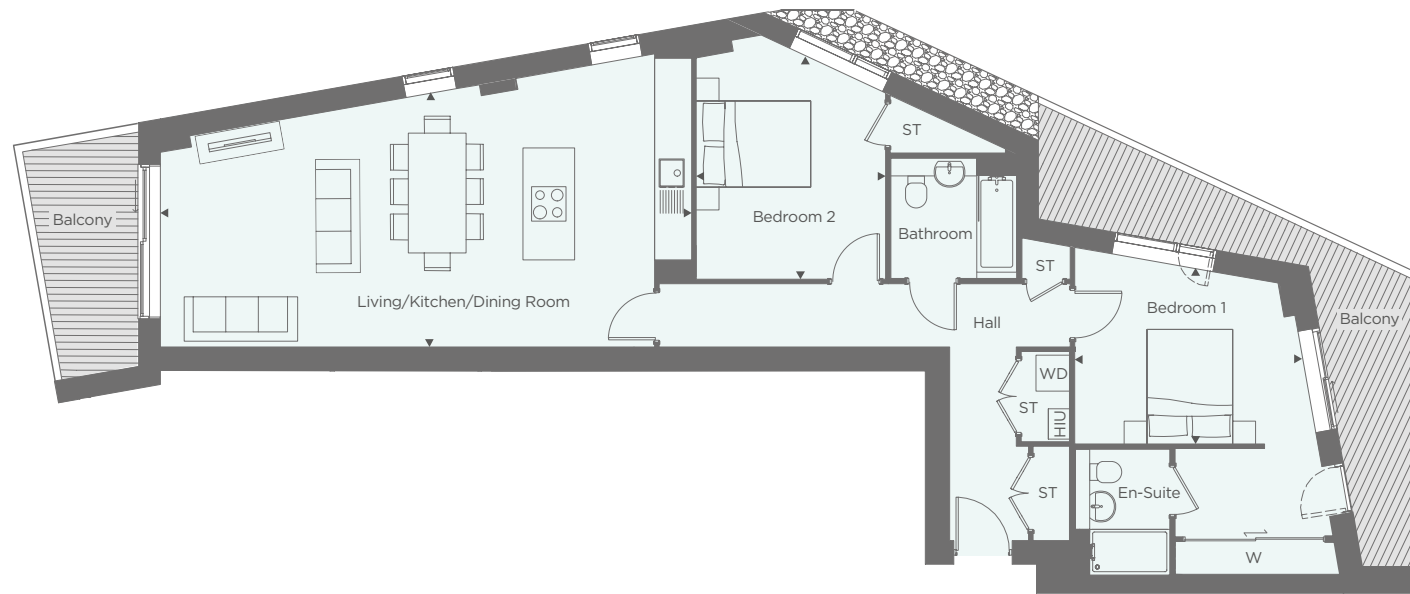
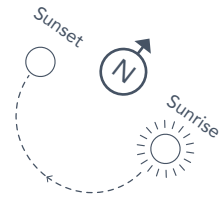
► Measuring points WD - Washer Dryer W - Wardrobe HIU - Heat Interface Unit ST - Storage

TENTH FLOOR



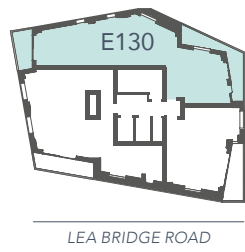
PLOT E130
2 BEDROOM

Living/Kitchen/Dining	9.25 x 4.40	30'4 x 14'5
Bedroom 1	3.95 x 3.05	12'11 x 10'0
Bedroom 2	3.30 x 4.00	10'9 x 13'1



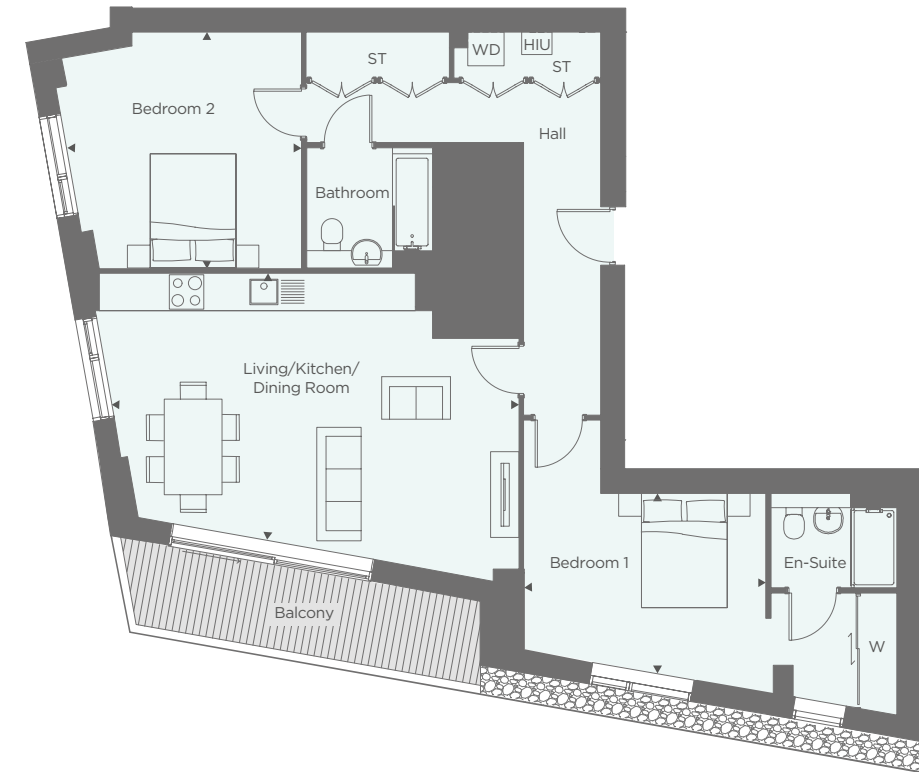
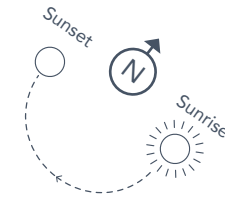
► Measuring points WD - Washer Dryer W - Wardrobe HIU - Heat Interface Unit ST - Storage

ELEVENTH FLOOR



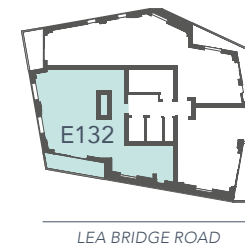
PLOT E132
2 BEDROOM

Living/Kitchen/Dining	7.05 x 4.55	23'1 x 14'11
Bedroom 1	4.20 x 3.05	13'9 x 10'0
Bedroom 2	4.05 x 4.10	13'3 x 13'5



► Measuring points WD - Washer Dryer W - Wardrobe HIU - Heat Interface Unit ST - Storage

ELEVENTH FLOOR



A UNIQUE COLLABORATION



Hill specialise in developing distinctive new homes across London and the South East.

We bring together award-winning contemporary design, sustainable materials and a sympathetic approach to create stunning, individual new properties and communities. We invest significant time and effort from the outset to ensure that all our properties achieve the perfect balance between innovation and practicality. As all construction work is carried out by ourselves, we are also able to guarantee the highest quality of finish within our homes.



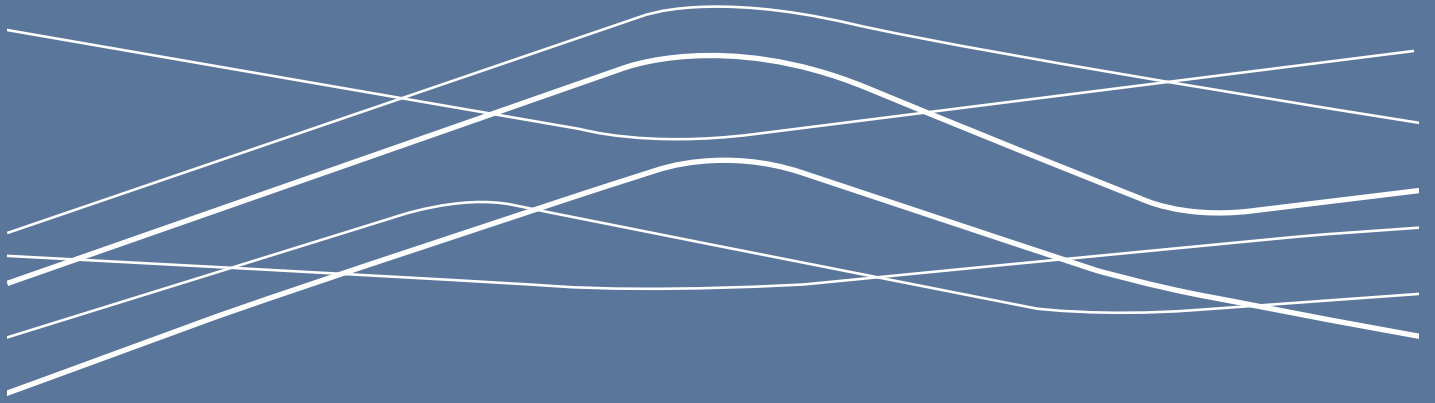
Peabody has over 150 years of history, experience and expertise. With over 55,000 homes, we are one of the largest housing providers in London and the south-east. We deliver services to 111,000 residents, 8,000 care and support customers, and the wider communities in which we work.

We focus on those who need our help the most, working with people and communities to build resilience and promote wellbeing. We create and invest in great places where people want to live.

Our ambitious housebuilding programme will deliver at least 2,500 homes every year.

MOTION-E10.CO.UK | 020 3906 1955

This brochure, and the description and measurements herein, do not form any part of a contract. Whilst every effort has been made to ensure accuracy, this cannot always be guaranteed. Site layouts, and specifications are taken from drawings which were correct at the time of print. All plans contained within this brochure are not to scale and room sizes are approximate and subject to change. Measurements contained within this brochure were taken from plans in metric measurements. Imperial measurements are for guidance purposes only. The information and imagery contained in this brochure is for guidance purposes only and does not constitute a contract, part of contract or warranty. Images of the Motion properties are computer generated and the landscaping may have been enhanced. Design and production DS.Emotion. Details correct at time of going to print January 2019.



A unique collaboration between

