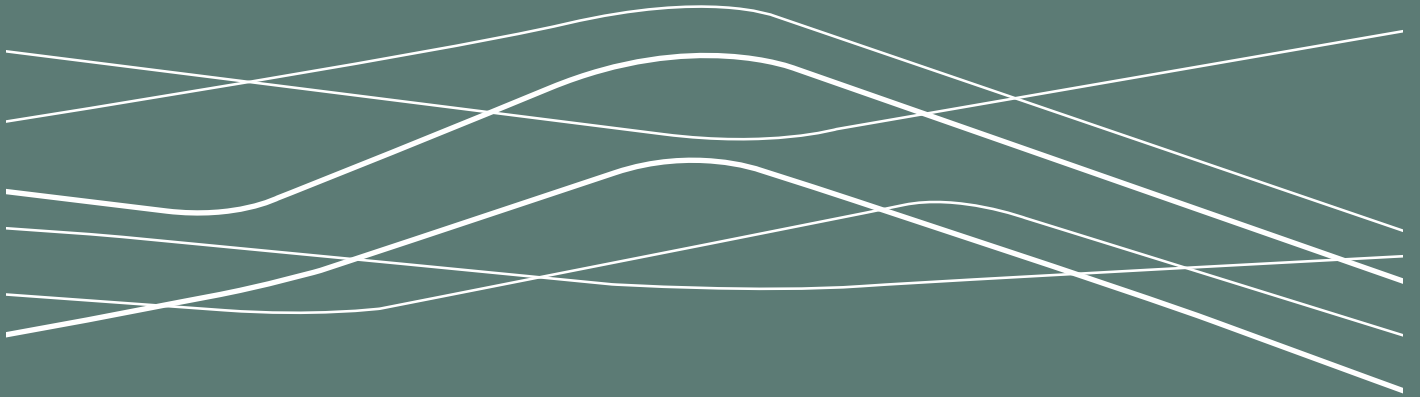


MOTION

LEA BRIDGE LONDON E10



MORRIS RISE

MORRIS RISE
MOTION

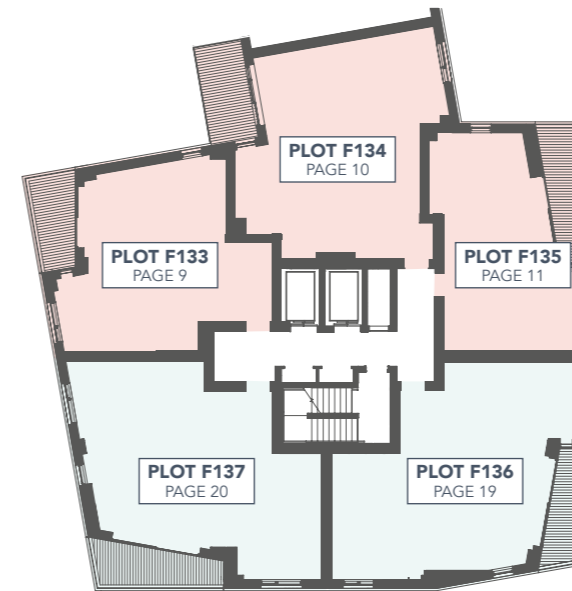
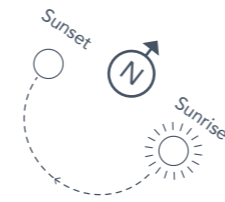


Welcome to Morris Rise at Motion

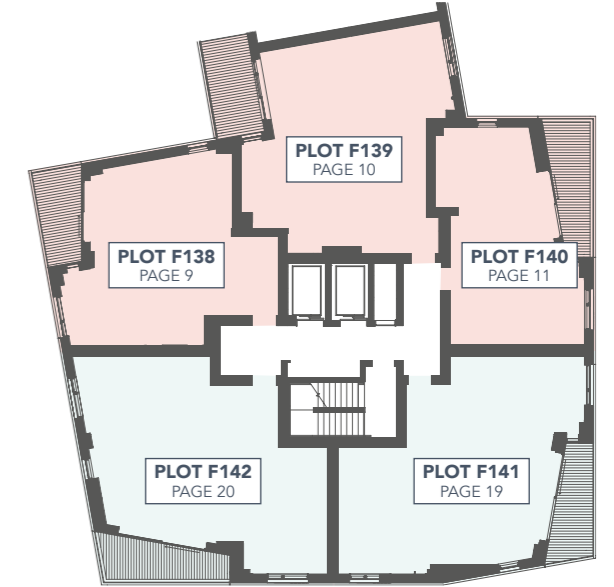
Fast-moving life slows to a comfortable pace as you look out across the green and welcoming Lea Valley. The distinctively shaped Morris Rise tower elegantly twists as it rises, where 14 floors host 58 studio, one-bedroom and two-bedroom apartments showcasing the best in vibrant, comfortable and modern urban design.

Welcome home to life in Motion.

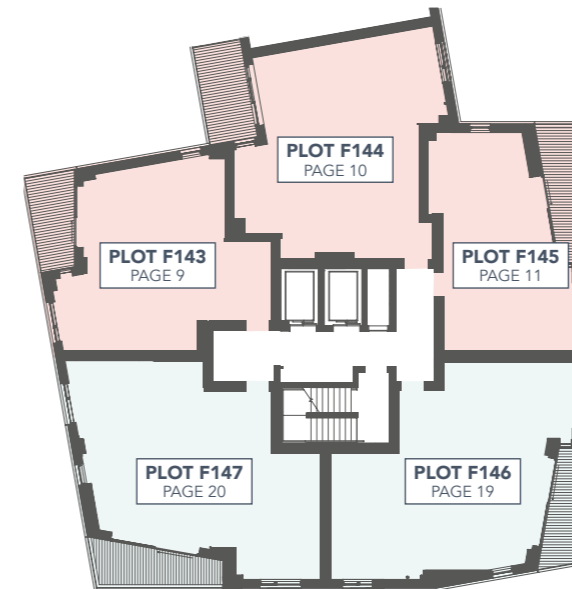
MORRIS RISE



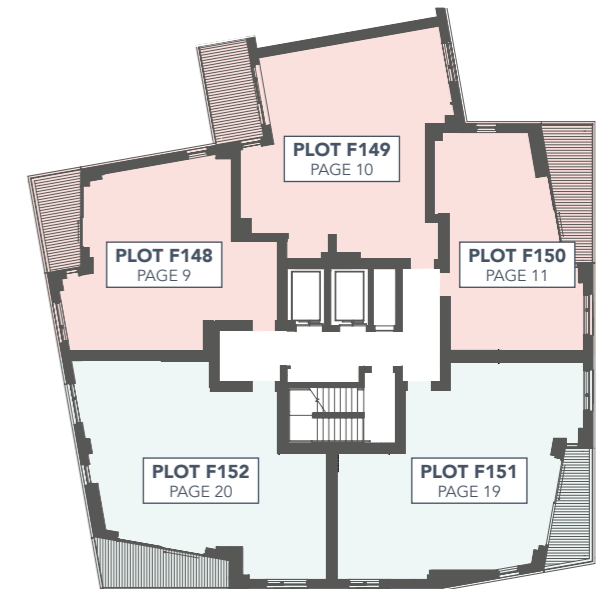
FIRST FLOOR



SECOND FLOOR



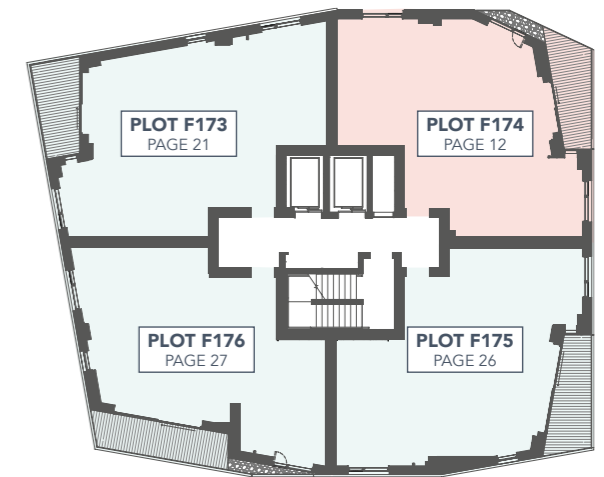
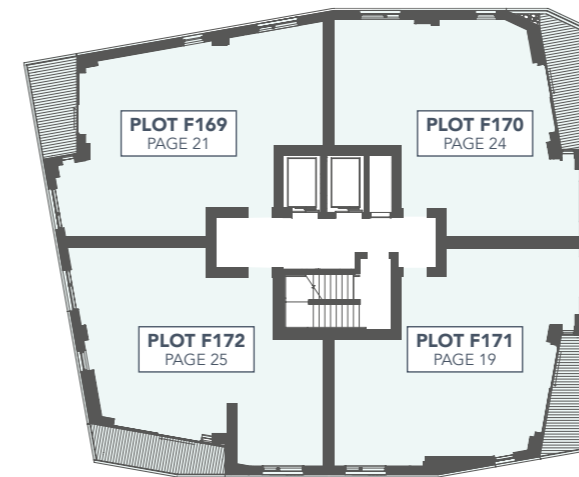
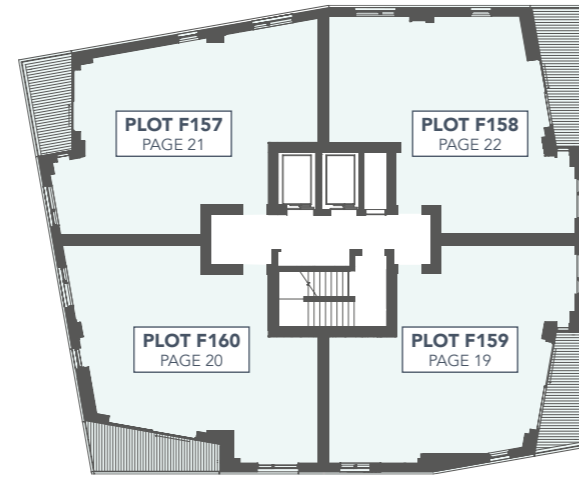
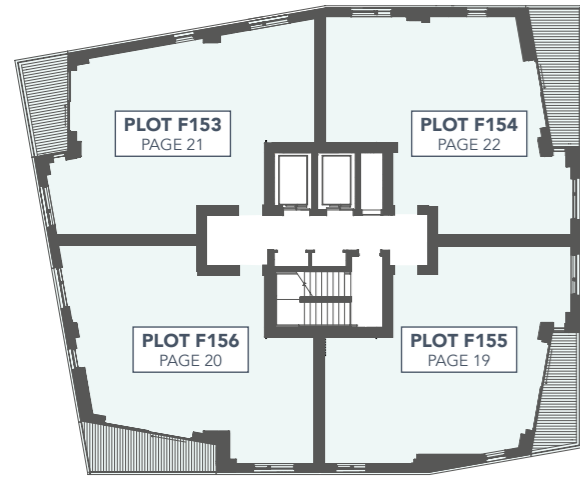
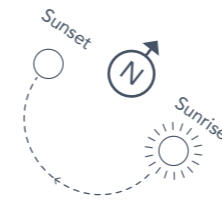
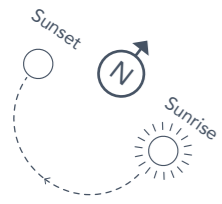
THIRD FLOOR



FOURTH FLOOR

ONE BEDROOM TWO BEDROOM

MORRIS RISE

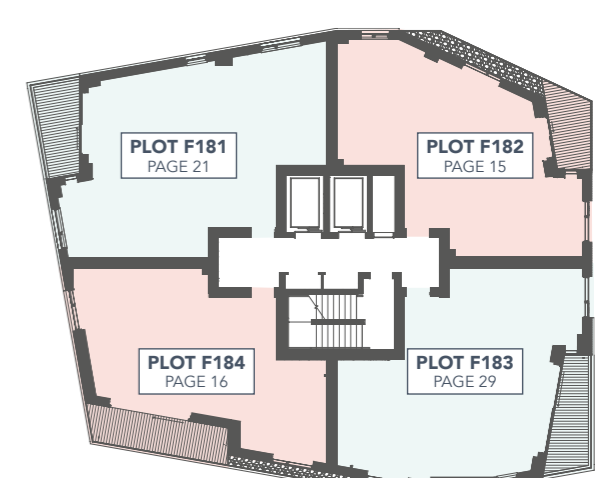
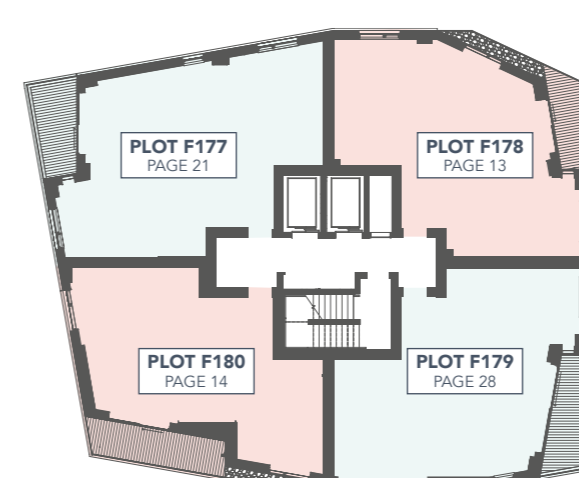
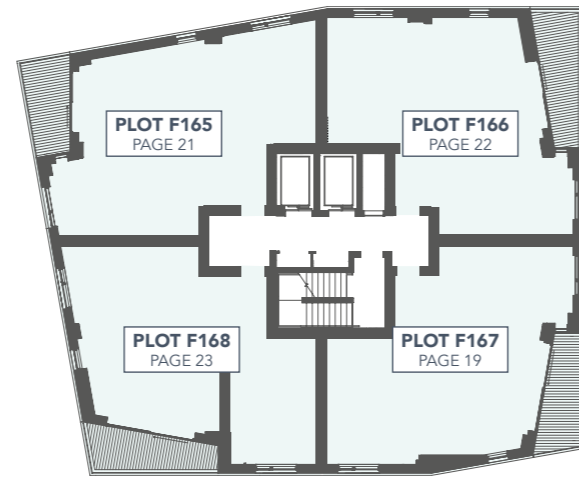
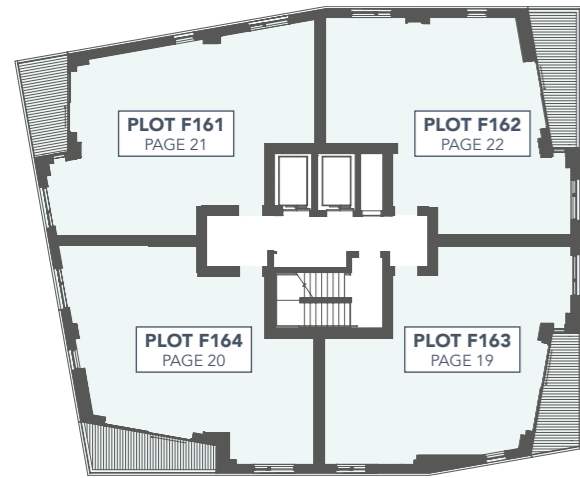


FIFTH FLOOR

SIXTH FLOOR

NINTH FLOOR

TENTH FLOOR



SEVENTH FLOOR

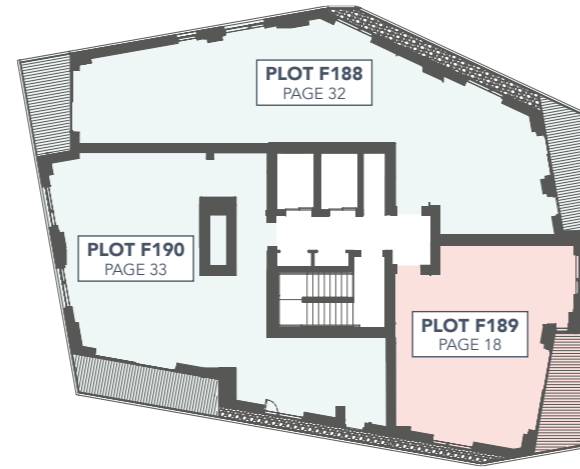
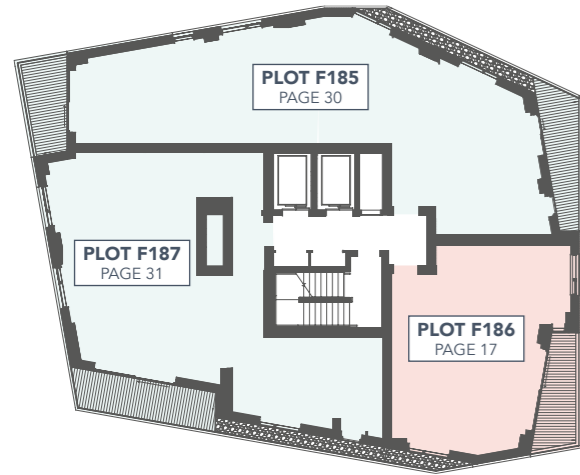
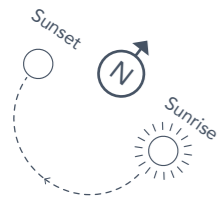
EIGHTH FLOOR

ELEVENTH FLOOR

TWELFTH FLOOR

ONE BEDROOM
 TWO BEDROOM

MORRIS RISE



THIRTEENTH FLOOR

FOURTEENTH FLOOR



Computer generated indicative image of view from Morris Rise

ONE BEDROOM
 TWO BEDROOM



Computer generated indicative image of Morris Rise

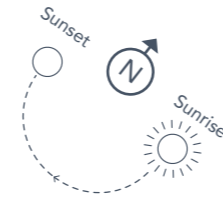


Computer generated indicative image of communal space

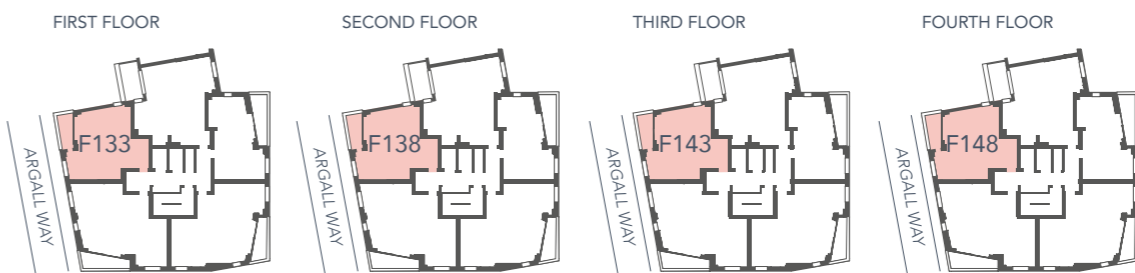
PLOT F133, F138, F143, F148 1 BEDROOM

Living/Dining/Kitchen	6.25 x 4.25	20'6 x 13'11
Bedroom	3.55 x 3.80	11'7 x 12'5

Wheelchair adaptable apartment



► Measuring points WD - Washer Dryer W - Wardrobe HIU - Heat Interface Unit ST - Storage

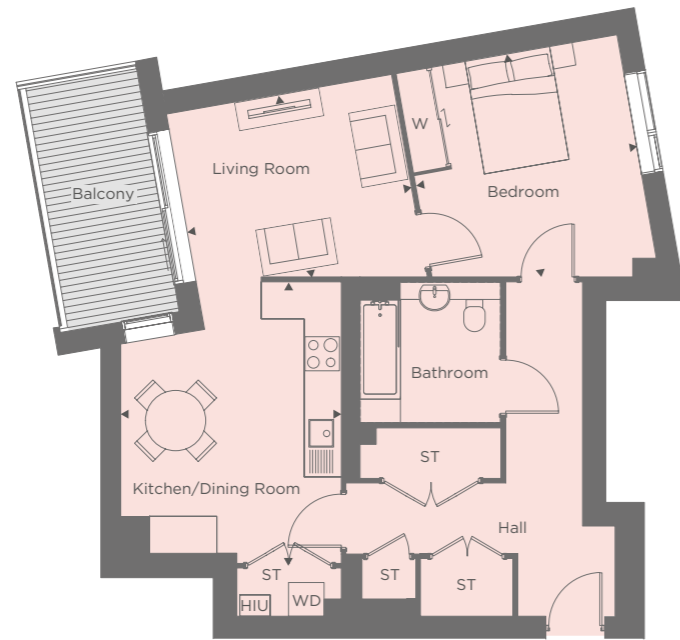
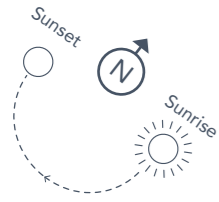


Apartment layouts provide approximate measurements only and are subject to planning. Dimensions, which are taken from the indicated points of measurement, are for guidance only and are not intended to be used for window treatments or items of furniture. Bathroom and kitchen layouts are indicative only and are subject to change. Wardrobe size and position may vary. The information contained within this document does not constitute part of any offer, contract or warranty. Whilst the plans have been prepared with all due care for the convenience of the intending purchaser, the information contained herein is a preliminary guide only.

PLOT F134, F139, F144, F149
1 BEDROOM

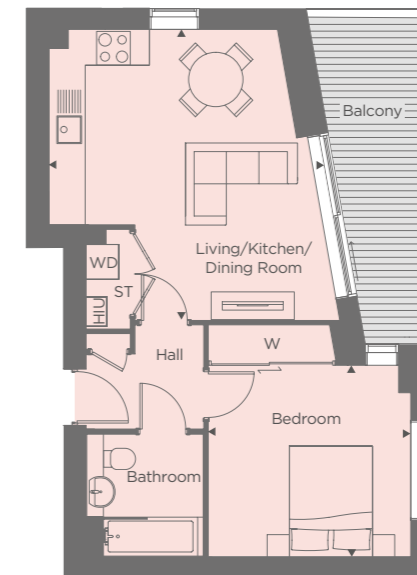
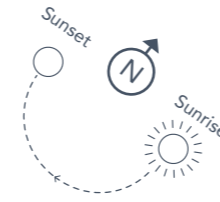
Kitchen/Dining Room	3.85 x 4.90	12'7 x 16'0
Living Room	3.95 x 3.20	12'11 x 10'5
Bedroom	3.90 x 3.95	12'9 x 12'11

Wheelchair adaptable apartment



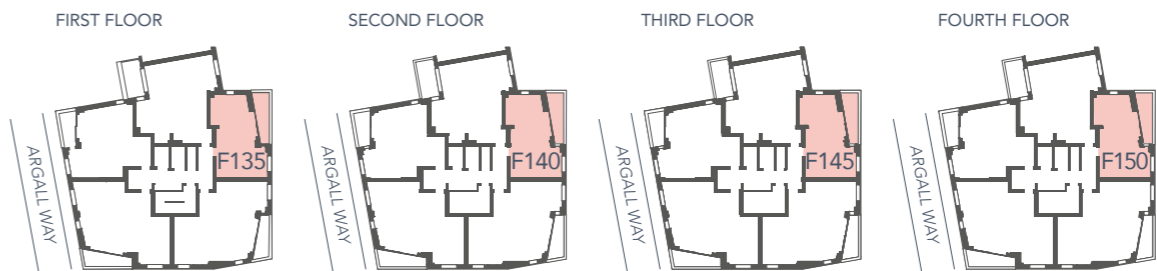
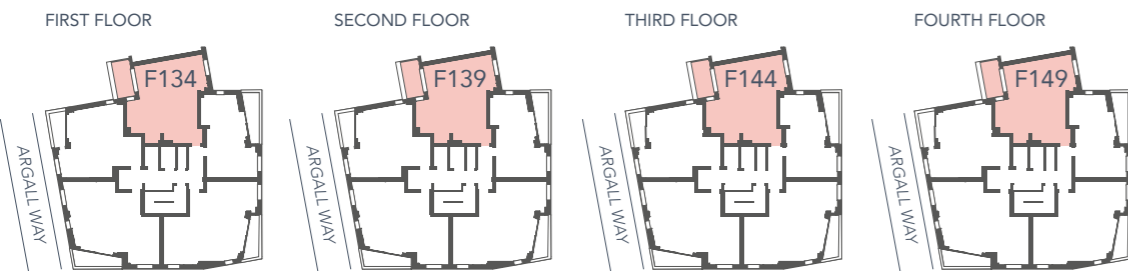
PLOT F135, F140, F145, F150
1 BEDROOM

Living/Dining/Kitchen	4.75 x 5.25	15'7 x 17'2
Bedroom	3.65 x 3.45	11'11 x 11'3



▶ Measuring points WD - Washer Dryer W - Wardrobe HIU - Heat Interface Unit ST - Storage

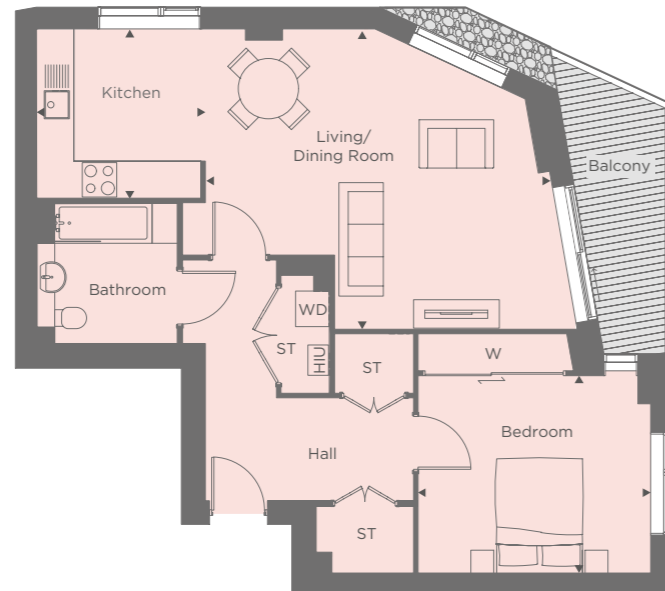
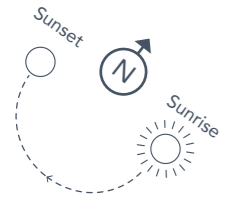
▶ Measuring points WD - Washer Dryer W - Wardrobe HIU - Heat Interface Unit ST - Storage



PLOT F174
1 BEDROOM

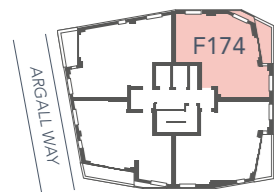
Living/Dining Room	6.00 x 5.25	19'8 x 17'2
Kitchen	2.95 x 2.95	9'8 x 9'8
Bedroom	4.05 x 3.45	13'3 x 11'3

Wheelchair adaptable apartment



▶ Measuring points WD - Washer Dryer W - Wardrobe HIU - Heat Interface Unit ST - Storage

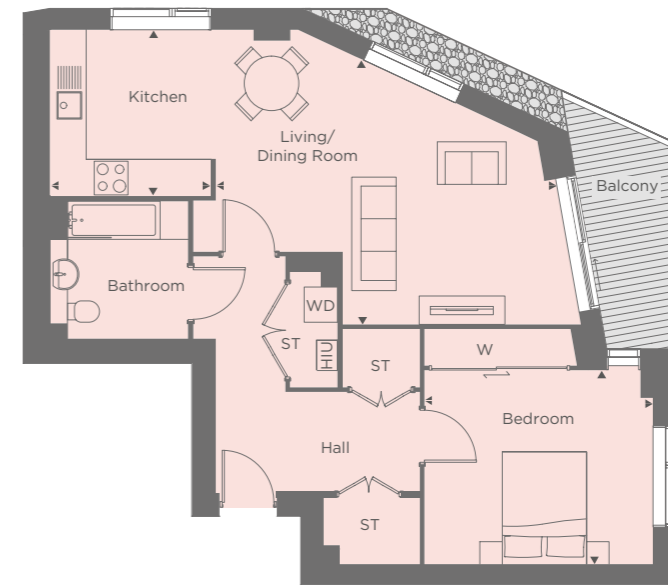
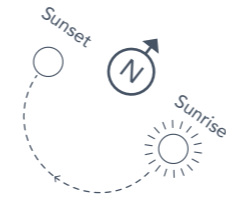
TENTH FLOOR



PLOT F178
1 BEDROOM

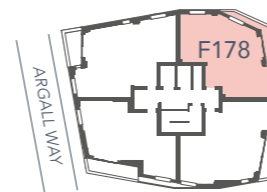
Living/Dining Room	6.05 x 4.60	19'10 x 15'1
Kitchen	2.95 x 2.95	9'8 x 9'8
Bedroom	4.05 x 3.45	13'3 x 11'3

Wheelchair adaptable apartment



▶ Measuring points WD - Washer Dryer W - Wardrobe HIU - Heat Interface Unit ST - Storage

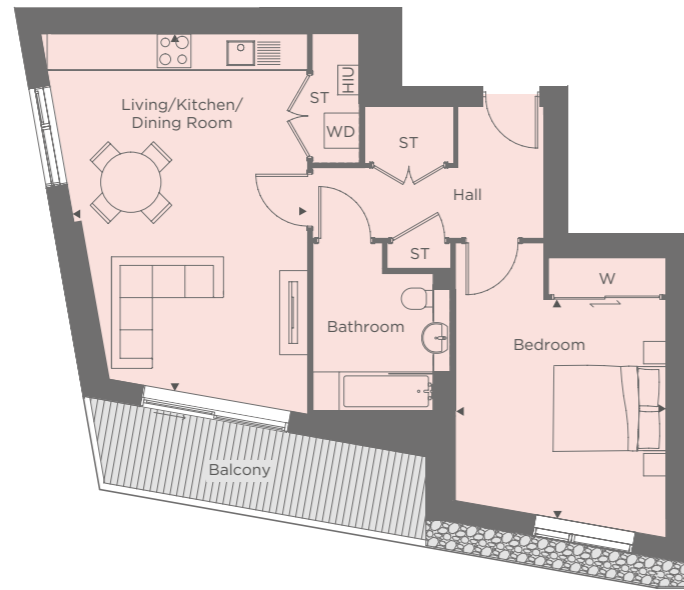
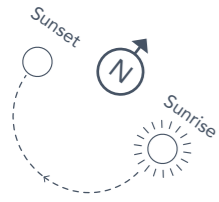
ELEVENTH FLOOR



PLOT F180
1 BEDROOM

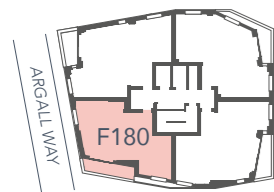
Living/Dining/Kitchen	4.20 x 6.40	13'9 x 20'11
Bedroom	3.75 x 3.90	12'3 x 12'9

Wheelchair adaptable apartment



▶ Measuring points WD - Washer Dryer W - Wardrobe HIU - Heat Interface Unit ST - Storage

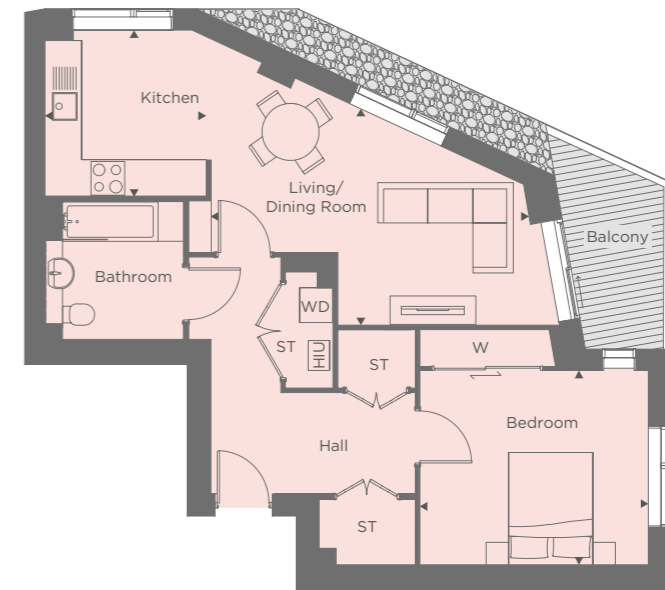
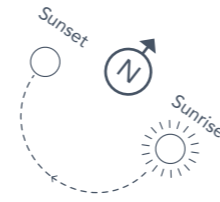
ELEVENTH FLOOR



PLOT F182
1 BEDROOM

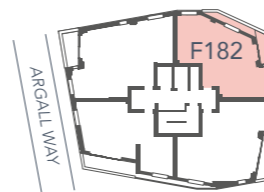
Living/Dining Room	5.65 x 3.80	18'6 x 12'5
Kitchen	2.95 x 2.95	9'8 x 9'8
Bedroom	4.05 x 3.45	13'3 x 11'3

Wheelchair adaptable apartment



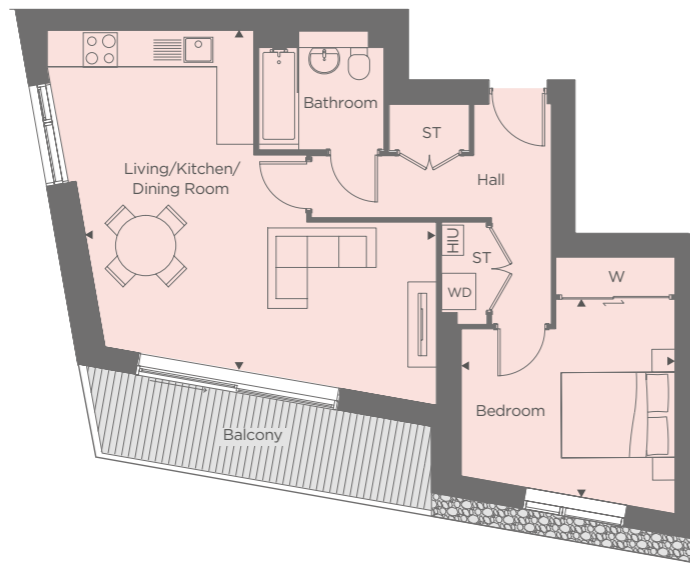
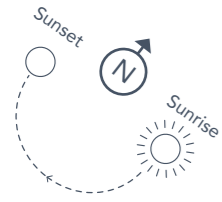
▶ Measuring points WD - Washer Dryer W - Wardrobe HIU - Heat Interface Unit ST - Storage

TWELFTH FLOOR



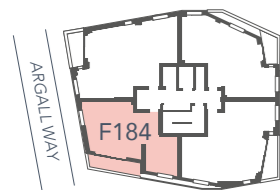
PLOT F184
1 BEDROOM

Living/Dining/Kitchen	6.15 x 6.00	20'2 x 19'8
Bedroom	3.70 x 3.40	12'1 x 11'1



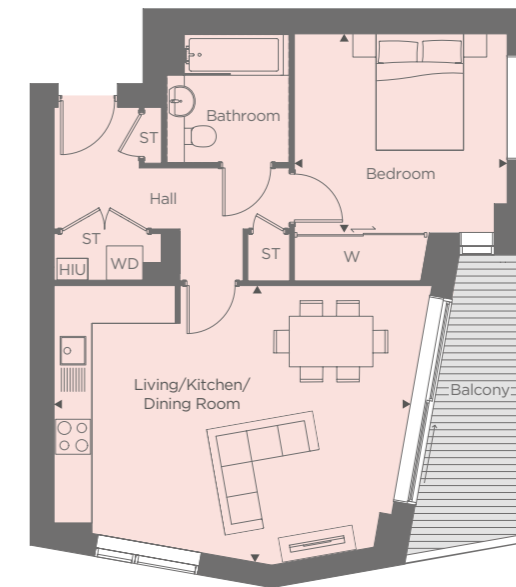
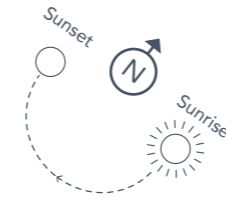
▶ Measuring points WD - Washer Dryer W - Wardrobe HIU - Heat Interface Unit ST - Storage

TWELFTH FLOOR



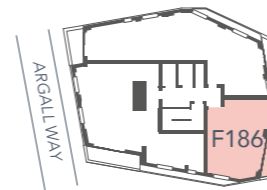
PLOT F186
1 BEDROOM

Living/Dining/Kitchen	6.05 x 4.65	19'10 x 15'3
Bedroom	3.65 x 3.40	11'11 x 11'1



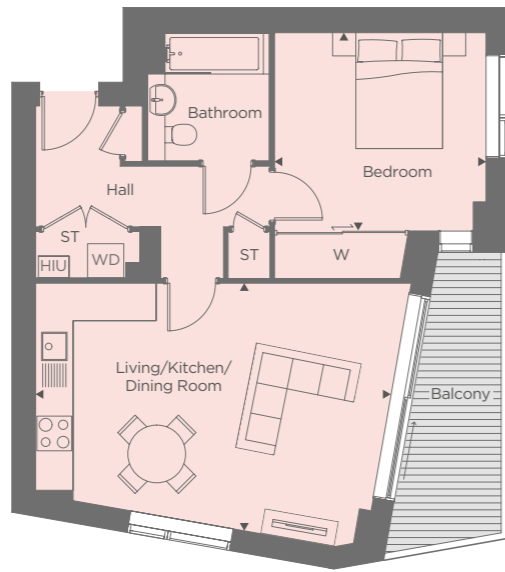
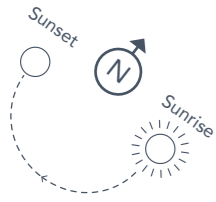
▶ Measuring points WD - Washer Dryer W - Wardrobe HIU - Heat Interface Unit ST - Storage

THIRTEENTH FLOOR



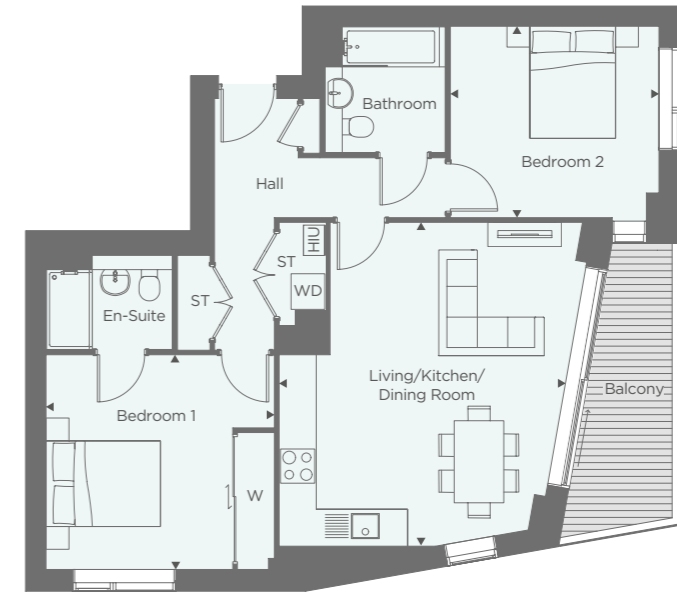
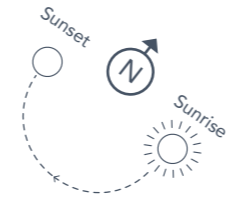
PLOT F189
1 BEDROOM

Living/Dining/Kitchen	6.10 x 4.15	20'0 x 13'7
Bedroom	3.65 x 3.40	11'11 x 11'1



PLOT F136, F141, F146, F151, F155, F159, F163, F167, F171
2 BEDROOM

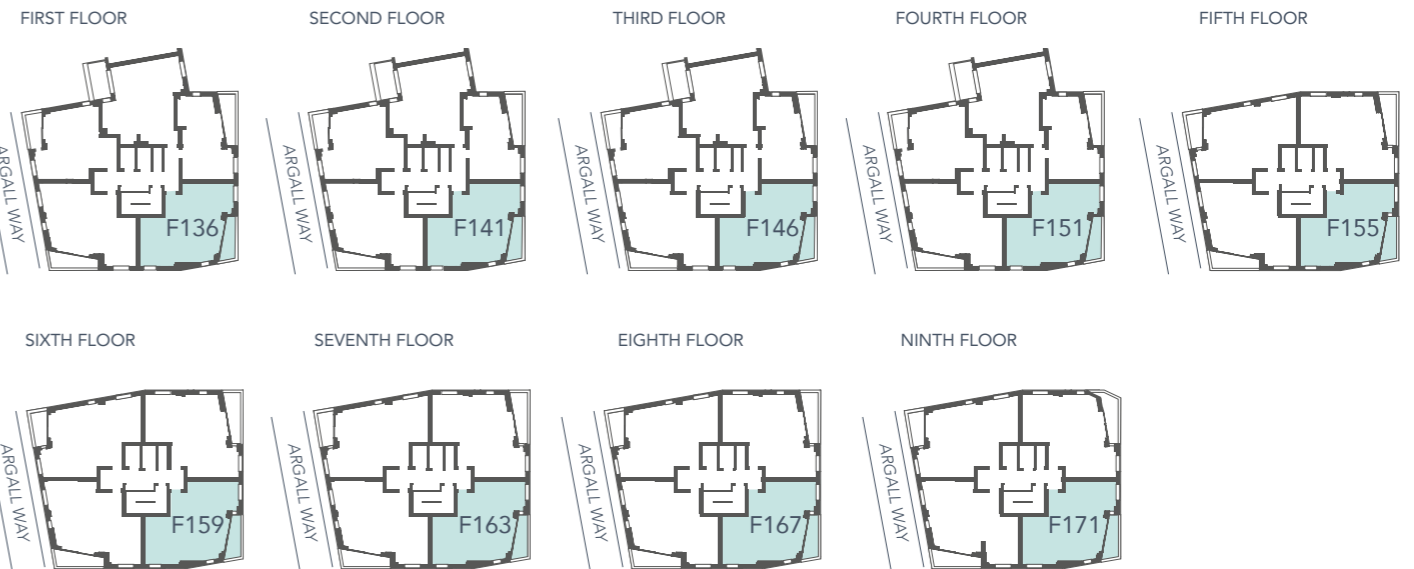
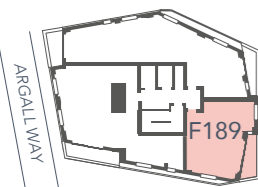
Living/Dining/Kitchen	5.00 x 5.65	16'4 x 18'6
Bedroom 1	4.00 x 3.75	13'1 x 12'3
Bedroom 2	3.65 x 3.35	11'11 x 10'11



► Measuring points WD - Washer Dryer W - Wardrobe HIU - Heat Interface Unit ST - Storage

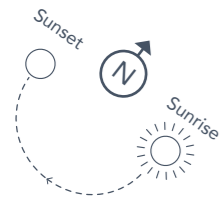
► Measuring points WD - Washer Dryer W - Wardrobe HIU - Heat Interface Unit ST - Storage

FOURTEENTH FLOOR



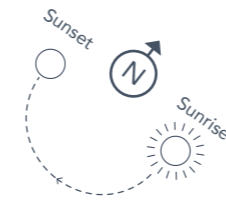
**PLOT F137, F142, F147, F152,
F156, F160, F164**
2 BEDROOM

Living/Dining/Kitchen	5.75 x 4.35	18'10 x 14'3
Bedroom 1	3.65 x 3.75	11'11 x 12'3
Bedroom 2	3.55 x 3.35	11'7 x 10'11



**PLOT F153, F157, F161, F165,
F169, F173, F177, F181**
2 BEDROOM

Living/Dining/Kitchen	6.15 x 4.70	20'2 x 15'5
Bedroom 1	3.35 x 3.35	10'11 x 10'11
Bedroom 2	4.20 x 3.35	13'9 x 10'11



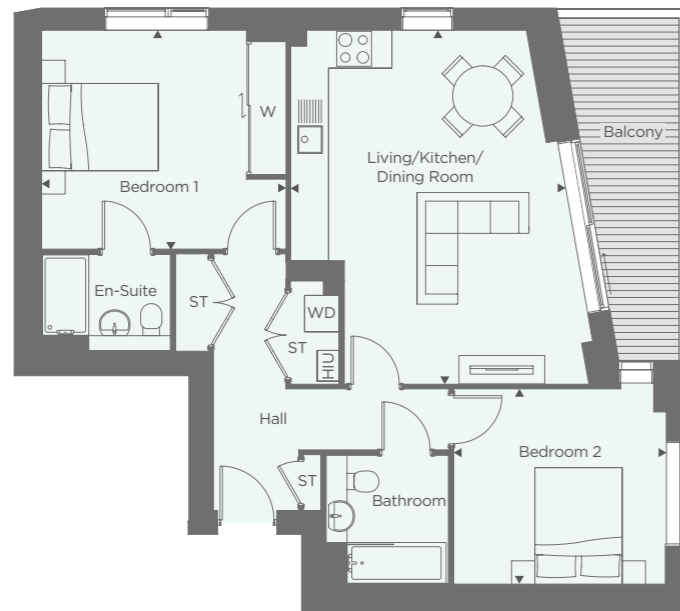
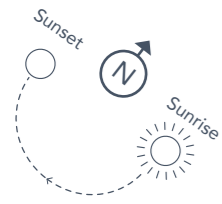
▶ Measuring points WD - Washer Dryer W - Wardrobe HIU - Heat Interface Unit ST - Storage

▶ Measuring points WD - Washer Dryer W - Wardrobe HIU - Heat Interface Unit



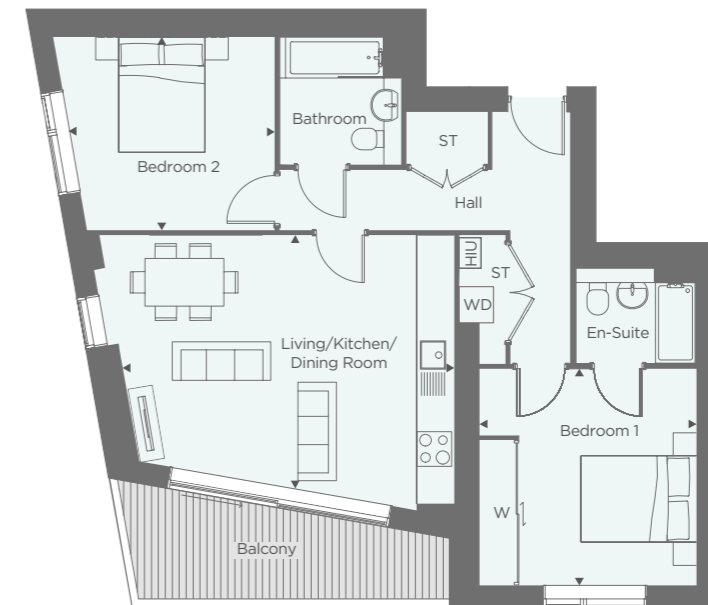
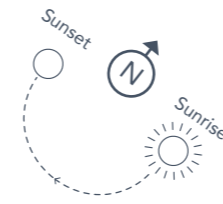
Plot F154, F158, F162, F166
2 BEDROOM

Living/Dining/Kitchen	4.75 x 6.05	15'7 x 19'10
Bedroom 1	4.15 x 3.75	13'7 x 12'3
Bedroom 2	3.65 x 3.35	11'11 x 10'11



PLOT F168
2 BEDROOM

Living/Dining/Kitchen	5.75 x 4.35	18'10 x 14'3
Bedroom 1	3.75 x 3.75	12'3 x 12'3
Bedroom 2	3.50 x 3.35	11'X5x 10'11



► Measuring points WD - Washer Dryer W - Wardrobe HIU - Heat Interface Unit ST - Storage

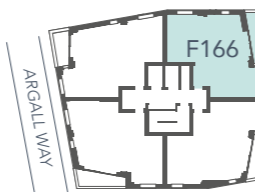
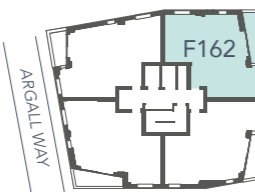
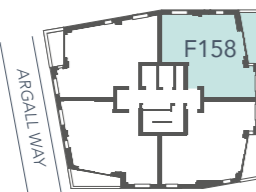
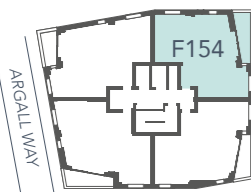
► Measuring points WD - Washer Dryer W - Wardrobe HIU - Heat Interface Unit ST - Storage

FIFTH FLOOR

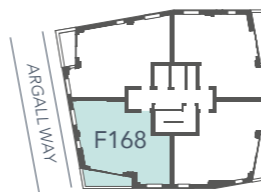
SIXTH FLOOR

SEVENTH FLOOR

EIGHTH FLOOR

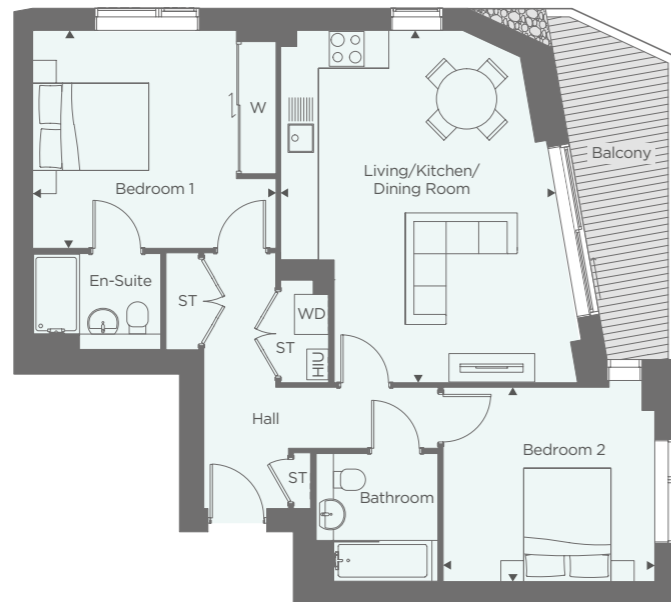
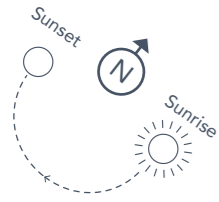


EIGHTH FLOOR



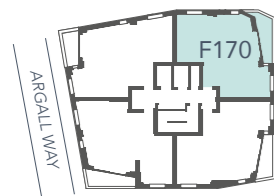
PLOT F170
2 BEDROOM

Living/Dining/Kitchen	4.75 x 6.80	15'7 x 22'3
Bedroom 1	4.15 x 3.75	13'7 x 12'3
Bedroom 2	3.65 x 3.35	11'11 x 10'11



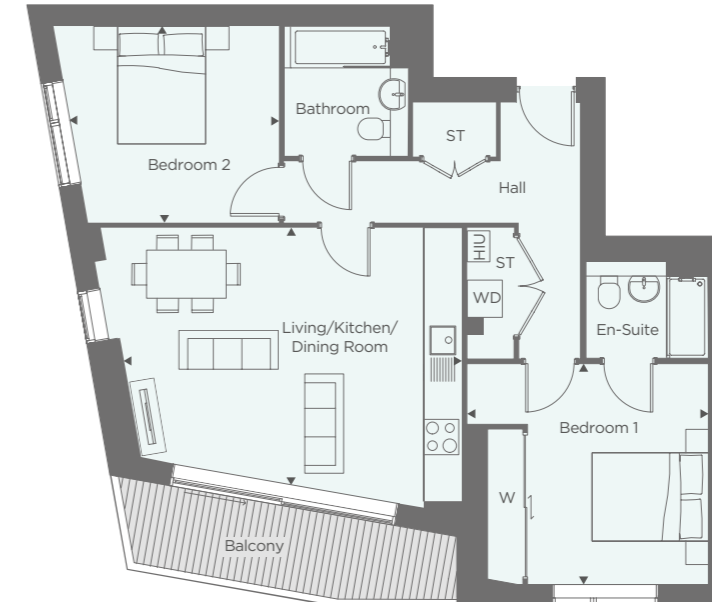
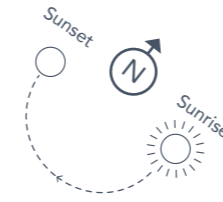
▶ Measuring points WD - Washer Dryer W - Wardrobe HIU - Heat Interface Unit ST - Storage

NINTH FLOOR



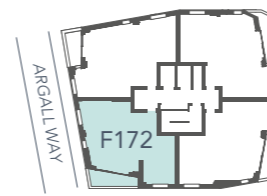
PLOT F172
2 BEDROOM

Living/Dining/Kitchen	5.75 x 4.35	18'10 x 14'3
Bedroom 1	4.10 x 3.75	13'5 x 12'3
Bedroom 2	3.55 x 3.35	11'7 x 10'11



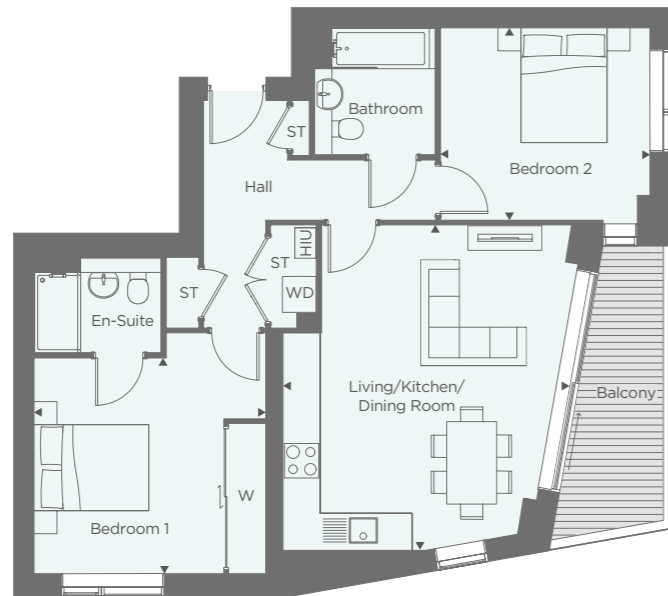
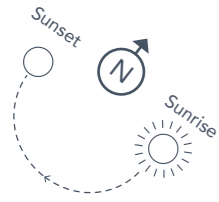
▶ Measuring points WD - Washer Dryer W - Wardrobe HIU - Heat Interface Unit ST - Storage

NINTH FLOOR



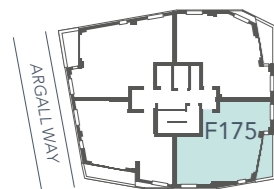
PLOT F175
2 BEDROOM

Living/Dining/Kitchen	4.70 x 5.65	15'5 x 18'6
Bedroom 1	4.00 x 3.75	13'1 x 12'3
Bedroom 2	3.65 x 3.35	11'11 x 10'11



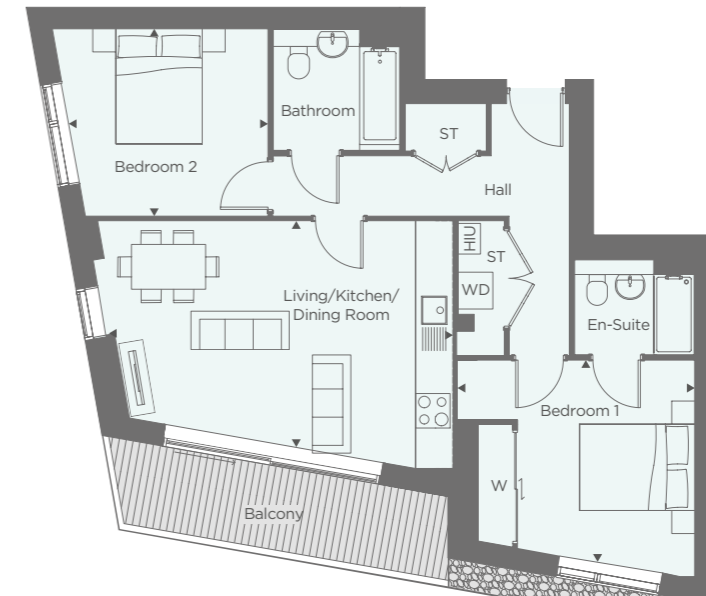
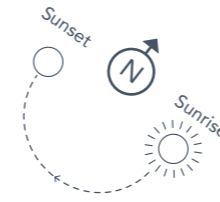
► Measuring points WD - Washer Dryer W - Wardrobe HIU - Heat Interface Unit ST - Storage

TENTH FLOOR



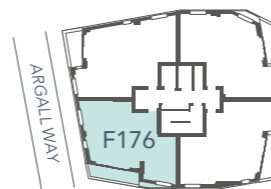
PLOT F176
2 BEDROOM

Living/Dining/Kitchen	5.85 x 4.00	19'2 x 13'1
Bedroom 1	4.10 x 3.40	13'5 x 11'1
Bedroom 2	3.45 x 3.25	11'3 x 10'7



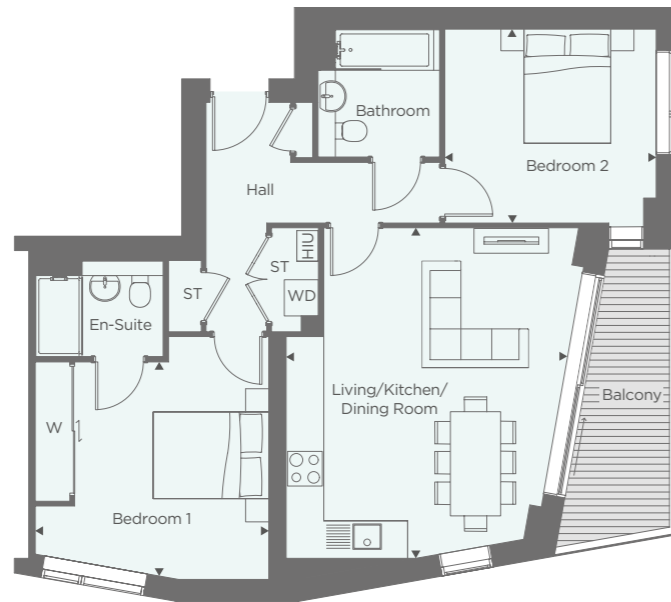
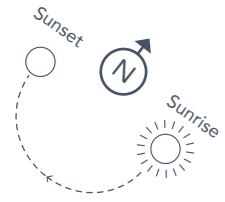
► Measuring points WD - Washer Dryer W - Wardrobe HIU - Heat Interface Unit ST - Storage

TENTH FLOOR



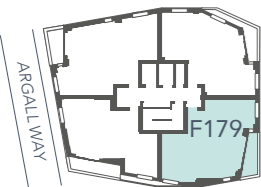
PLOT F179
2 BEDROOM

Living/Dining/Kitchen	4.70 x 5.65	15'5 x 18'6
Bedroom 1	4.00 x 3.65	13'1 x 11'11
Bedroom 2	3.65 x 3.35	11'11 x 10'11



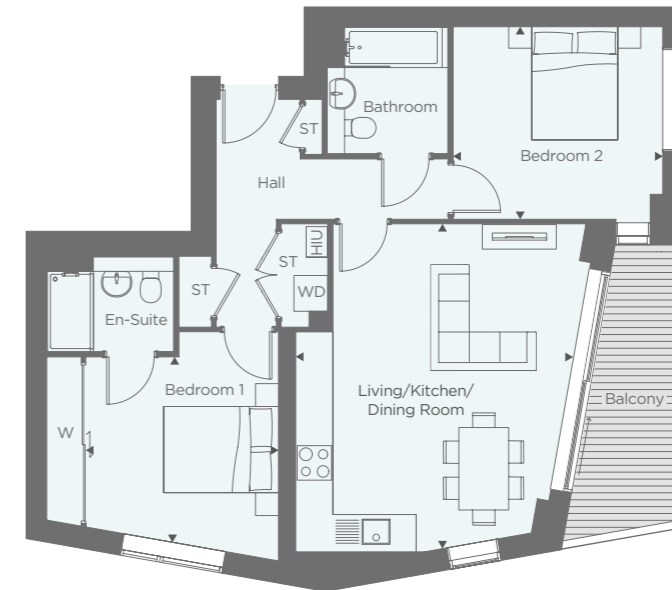
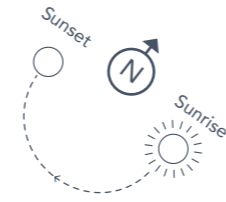
▶ Measuring points WD - Washer Dryer W - Wardrobe HIU - Heat Interface Unit ST - Storage

ELEVENTH FLOOR



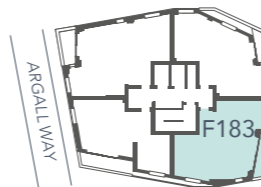
PLOT F183
2 BEDROOM

Living/Dining/Kitchen	4.70 x 5.65	15'5 x 18'6
Bedroom 1	3.35 x 3.20	10'11 x 10'5
Bedroom 2	3.65 x 3.35	11'11 x 10'11



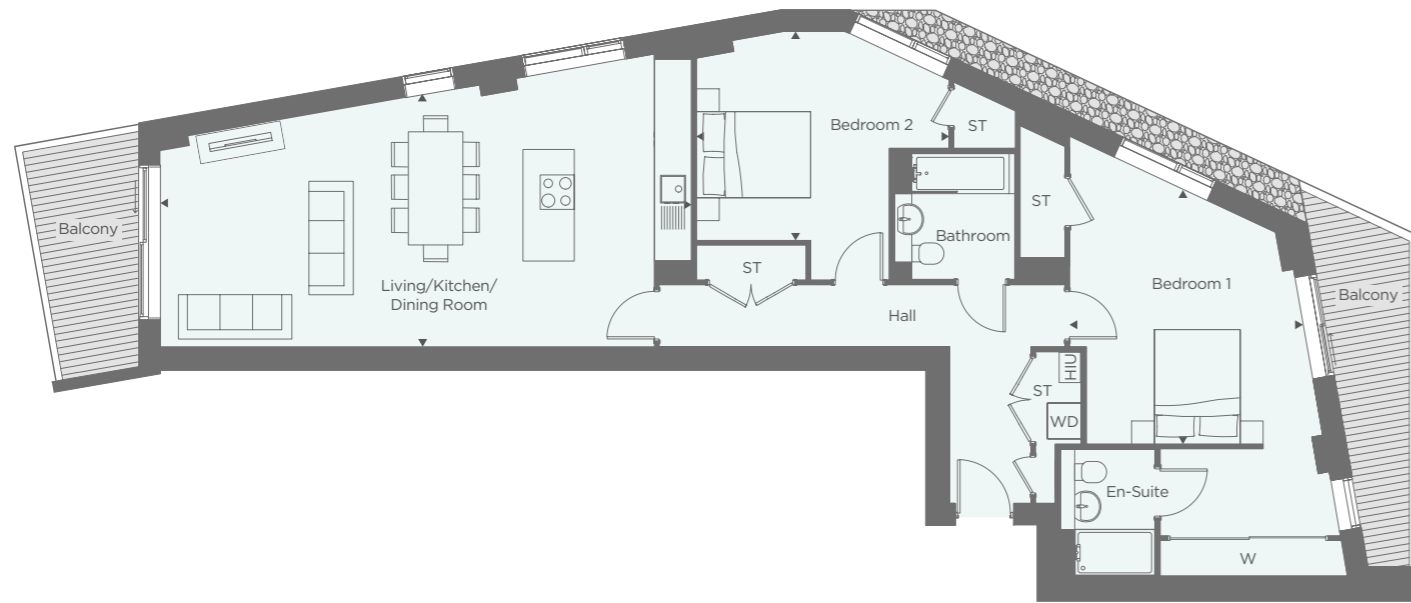
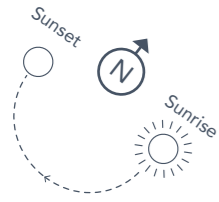
▶ Measuring points WD - Washer Dryer W - Wardrobe HIU - Heat Interface Unit ST - Storage

TWELFTH FLOOR



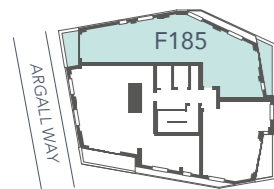
PLOT F185
2 BEDROOM

Living/Dining/Kitchen	9.25 x 4.40	30'4 x 14'5
Bedroom 1	4.05 x 4.40	13'3 x 14'5
Bedroom 2	4.40 x 3.65	14'5 x 11'11



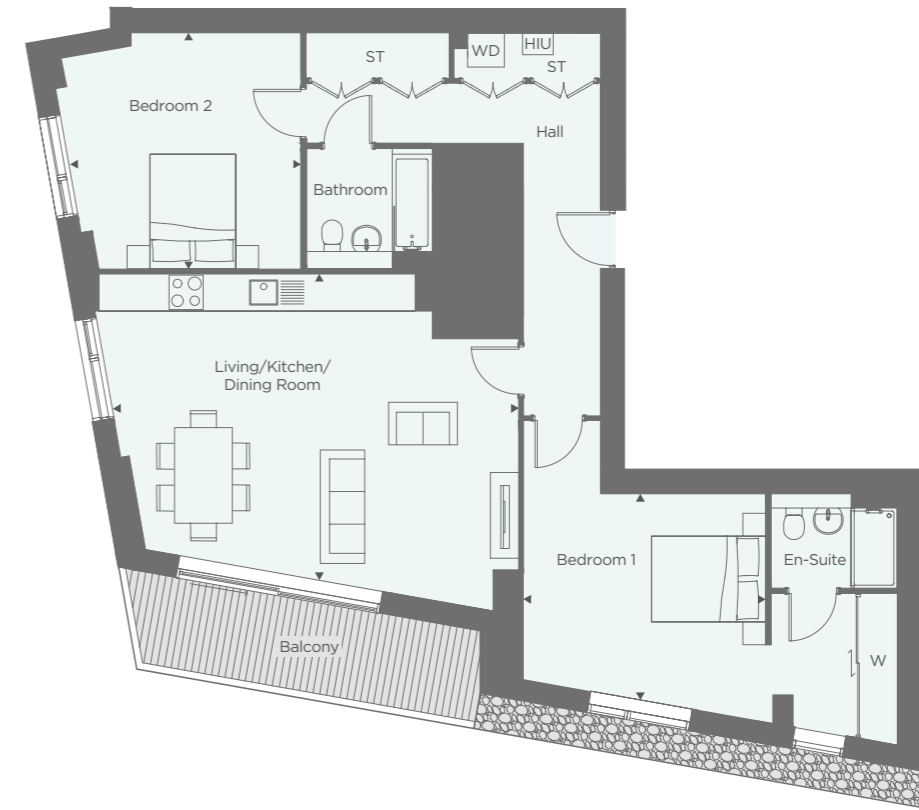
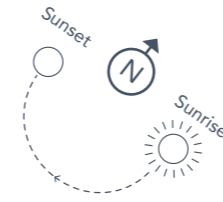
▶ Measuring points WD - Washer Dryer W - Wardrobe HIU - Heat Interface Unit ST - Storage

THIRTEENTH FLOOR



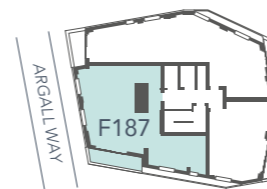
PLOT F187
2 BEDROOM

Living/Dining/Kitchen	7.00 x 5.35	11'5 x 17'6
Bedroom 1	4.20 x 3.60	13'9 x 11'9
Bedroom 2	4.05 x 4.10	13'3 x 13'5



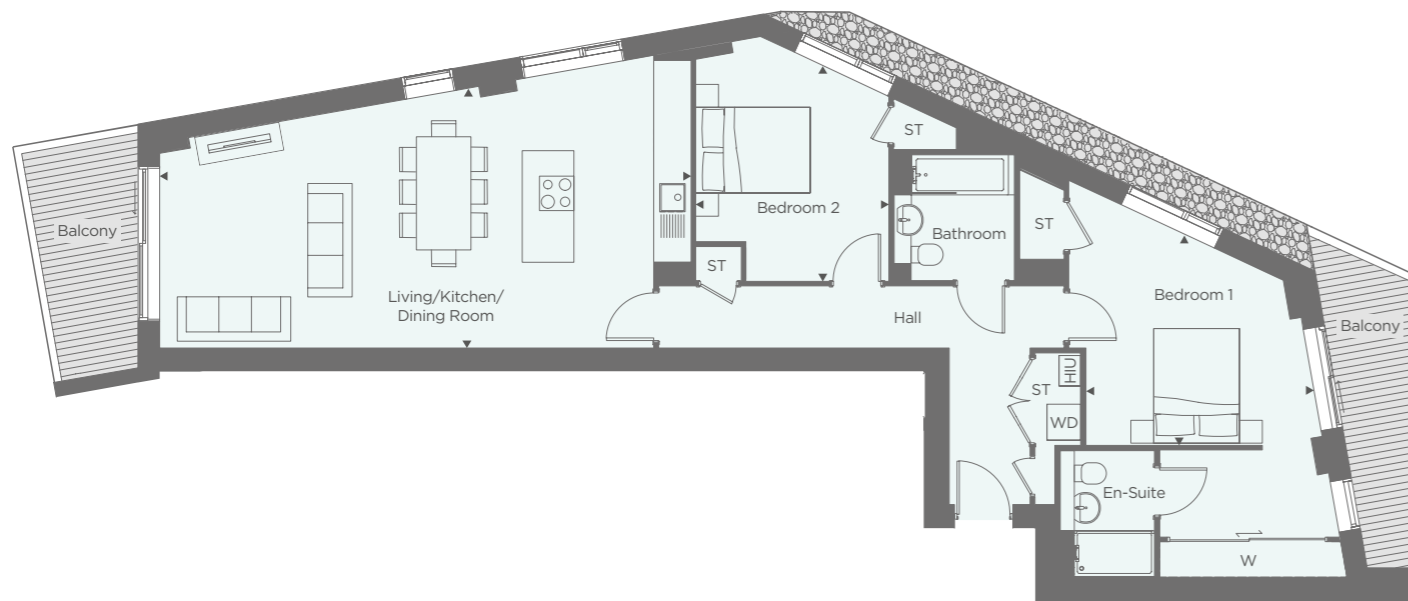
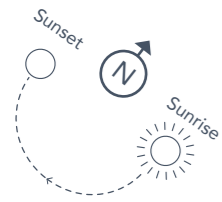
▶ Measuring points WD - Washer Dryer W - Wardrobe HIU - Heat Interface Unit ST - Storage

THIRTEENTH FLOOR



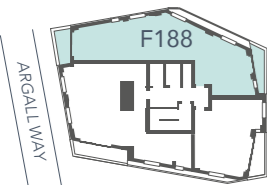
PLOT F188
2 BEDROOM

Living/Dining/Kitchen	9.25 x 4.40	30'4 x 14'5
Bedroom 1	4.10 x 3.65	13'5 x 11'11
Bedroom 2	3.35 x 4.00	10'11 x 13'1



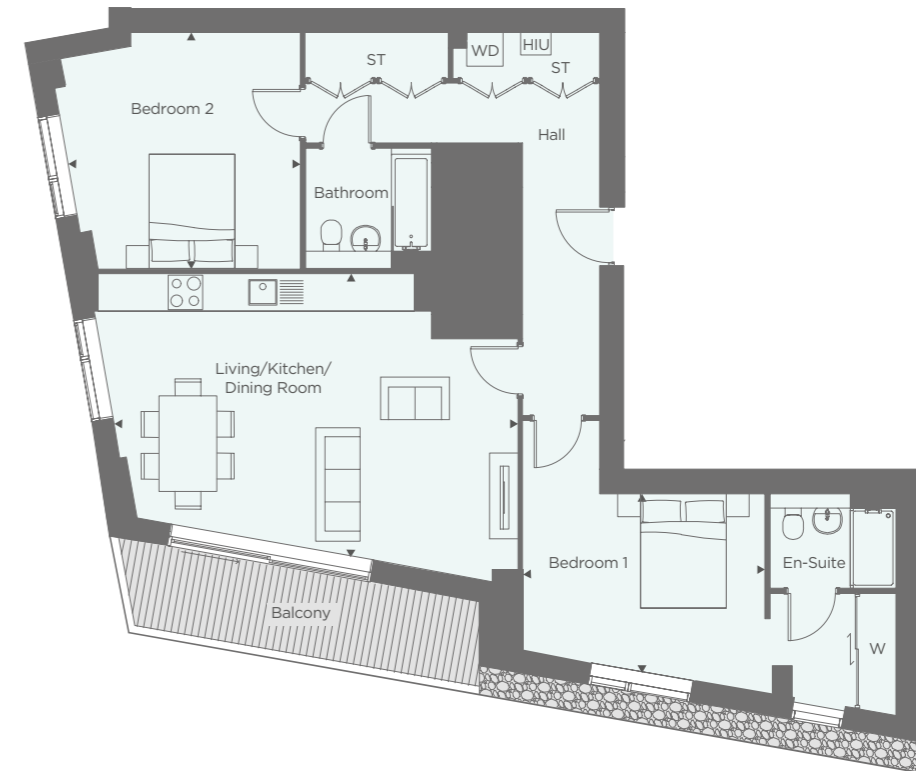
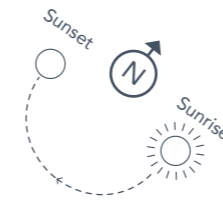
► Measuring points WD - Washer Dryer W - Wardrobe HIU - Heat Interface Unit ST - Storage

FOURTEENTH FLOOR



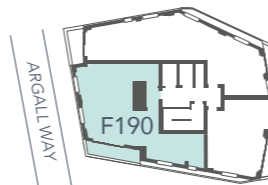
PLOT F190
2 BEDROOM

Living/Dining/Kitchen	7.10 x 4.75	23'3 x 15'7
Bedroom 1	4.20 x 3.10	13'9 x 10'2
Bedroom 2	4.05 x 4.10	13'3 x 13'5



► Measuring points WD - Washer Dryer W - Wardrobe HIU - Heat Interface Unit ST - Storage

FOURTEENTH FLOOR





A UNIQUE COLLABORATION



Hill specialise in developing distinctive new homes across London and the South East.

We bring together award-winning contemporary design, sustainable materials and a sympathetic approach to create stunning, individual new properties and communities. We invest significant time and effort from the outset to ensure that all our properties achieve the perfect balance between innovation and practicality. As all construction work is carried out by ourselves, we are also able to guarantee the highest quality of finish within our homes.



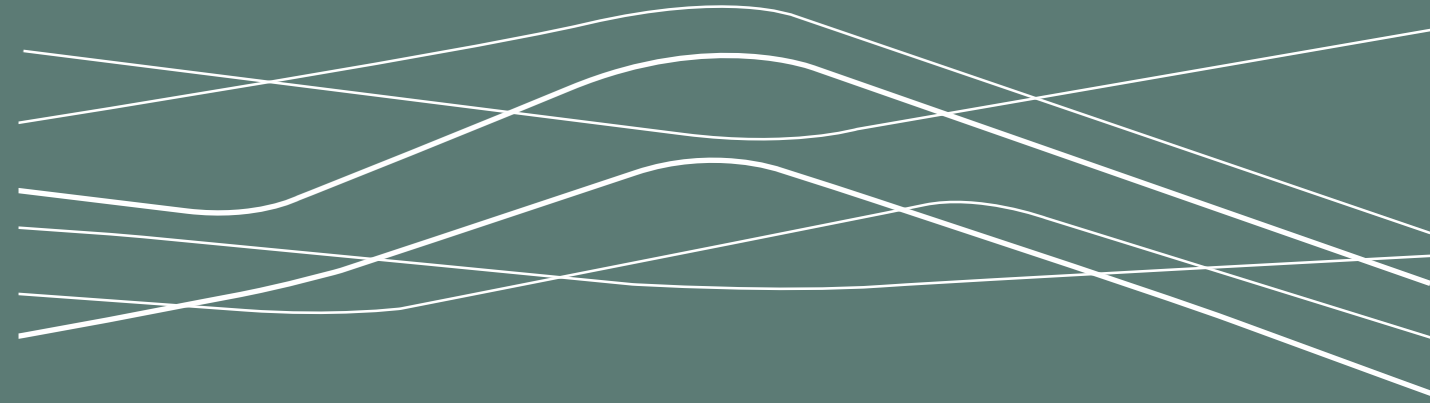
Peabody has over 150 years of history, experience and expertise. With over 55,000 homes, we are one of the largest housing providers in London and the south-east. We deliver services to 111,000 residents, 8,000 care and support customers, and the wider communities in which we work.

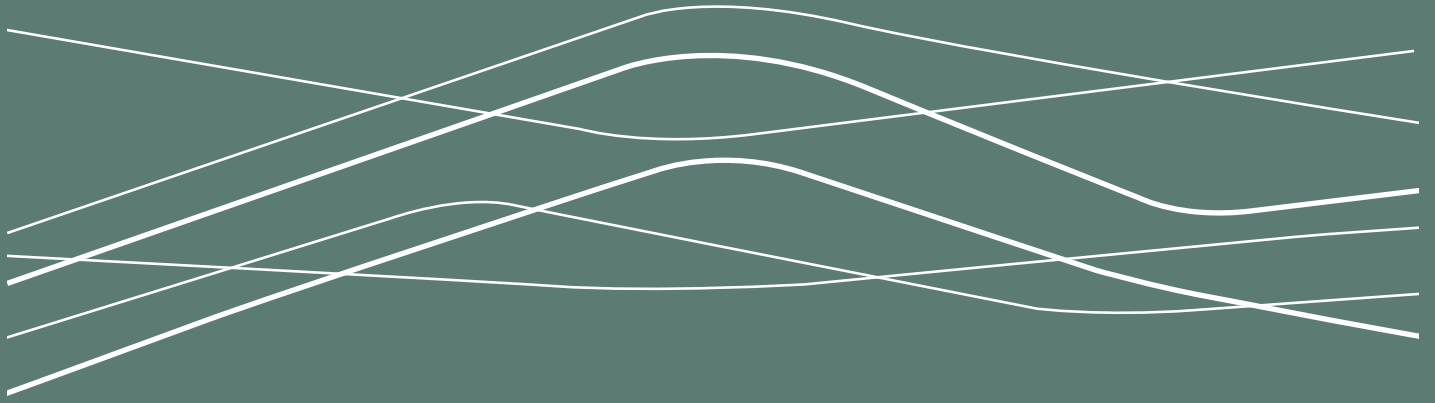
We focus on those who need our help the most, working with people and communities to build resilience and promote wellbeing. We create and invest in great places where people want to live.

Our ambitious housebuilding programme will deliver at least 2,500 homes every year.

MOTION-E10.CO.UK | 020 3906 1955

This brochure, and the description and measurements herein, do not form any part of a contract. Whilst every effort has been made to ensure accuracy, this cannot always be guaranteed. Site layouts, and specifications are taken from drawings which were correct at the time of print. All plans contained within this brochure are not to scale and room sizes are approximate and subject to change. Measurements contained within this brochure were taken from plans in metric measurements. Imperial measurements are for guidance purposes only. The information and imagery contained in this brochure is for guidance purposes only and does not constitute a contract, part of contract or warranty. Images of the Motion properties are computer generated and the landscaping may have been enhanced. Design and production DS.Emotion. Details correct at time of going to print July 2019.





A unique collaboration between

