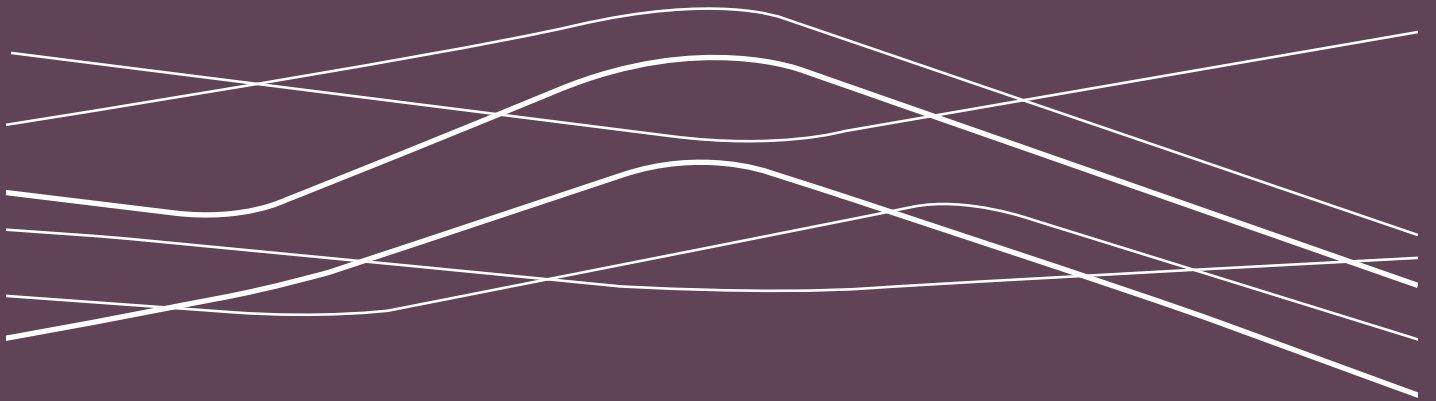


# MOTION

LEA BRIDGE LONDON E10



BECK HOUSE

# BECK HOUSE MOTION



## Welcome to Beck House at Motion

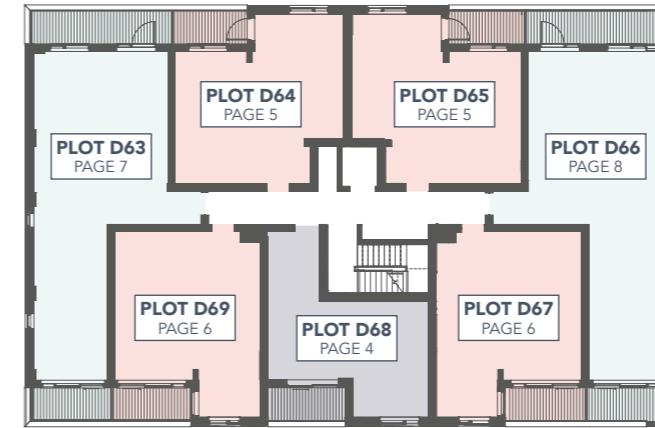
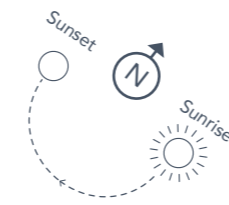
Life in Motion is made for more of the life that you want. Beck House sits adjacent to the green communal courtyard, where residents can enjoy the warmth of a welcoming community.

Stepping into Beck House, you'll find 28 studio, one and two-bedroom apartments across four floors, where some homes will have views stretching towards the city.

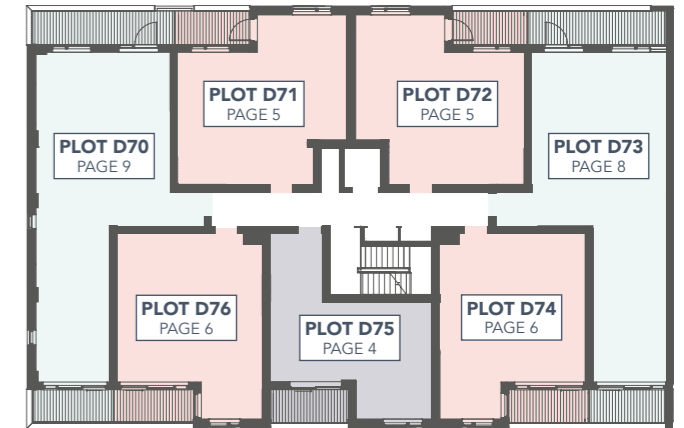
Each apartment boasts a light and airy modern design, containing spacious bedrooms, kitchens and living rooms designed for comfort. Relax and enjoy stunning views from the roof terrace - exclusive to Beck House and Bremer House residents. All positioned within easy reach of train and cycle links that put the world's cultural capital at your feet.

Welcome home to life in Motion.

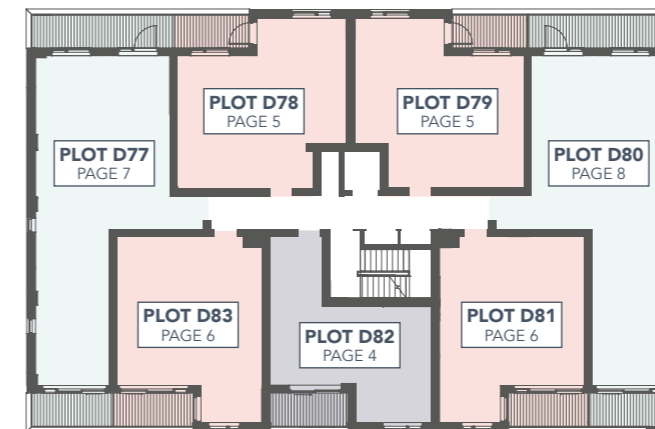
# BECK HOUSE



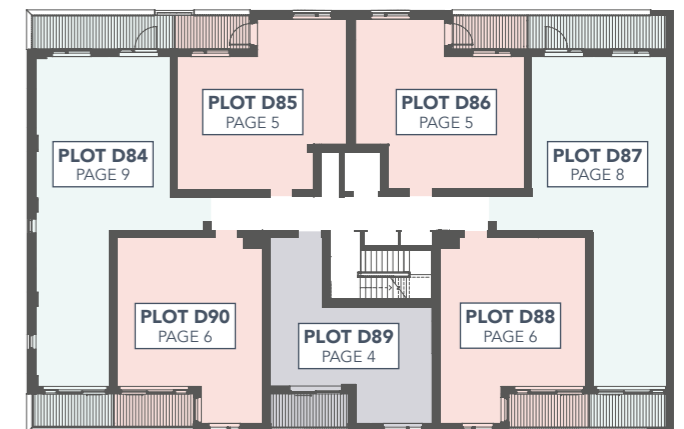
FIRST FLOOR



SECOND FLOOR



THIRD FLOOR

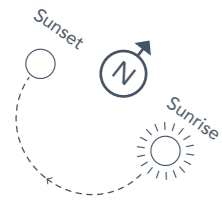


FOURTH FLOOR

STUDIO
  ONE BEDROOM
  TWO BEDROOM

**PLOT D68, D75, D82, D89**  
STUDIO APARTMENT

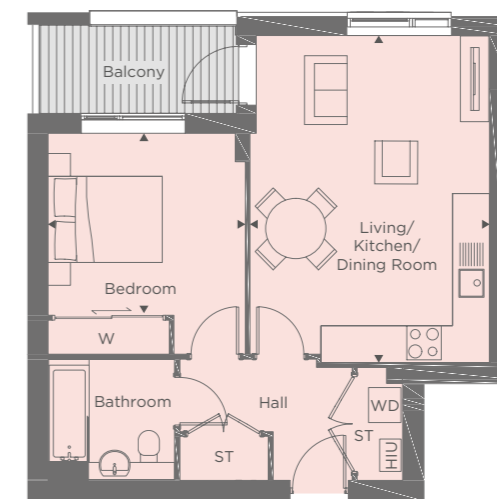
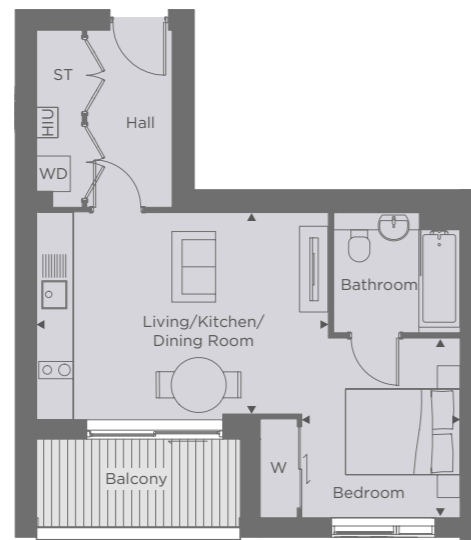
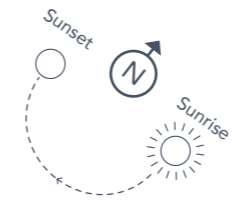
|                       |             |             |
|-----------------------|-------------|-------------|
| Living/Kitchen/Dining | 5.10 x 3.50 | 16'8 x 11'5 |
| Bedroom               | 2.75 x 3.10 | 9'0 x 10'2  |



**PLOT D64, D65\*, D71, D72\*, D78, D79\*, D85, D86\***  
1 BEDROOM

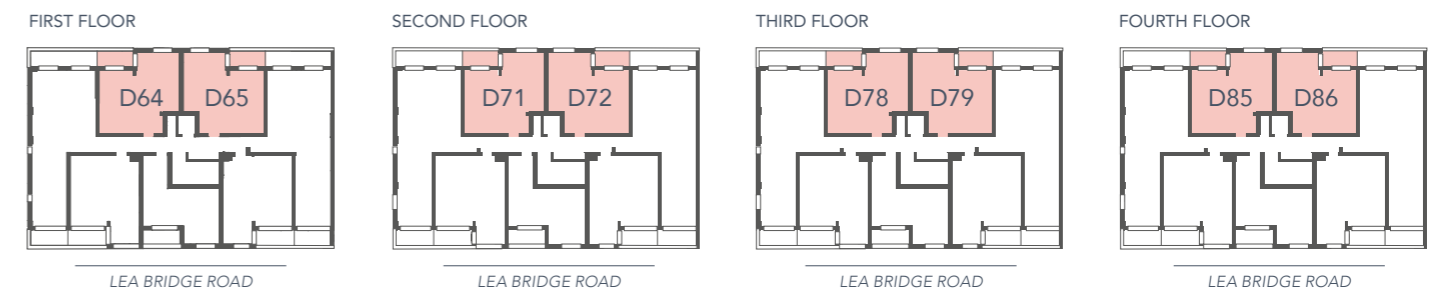
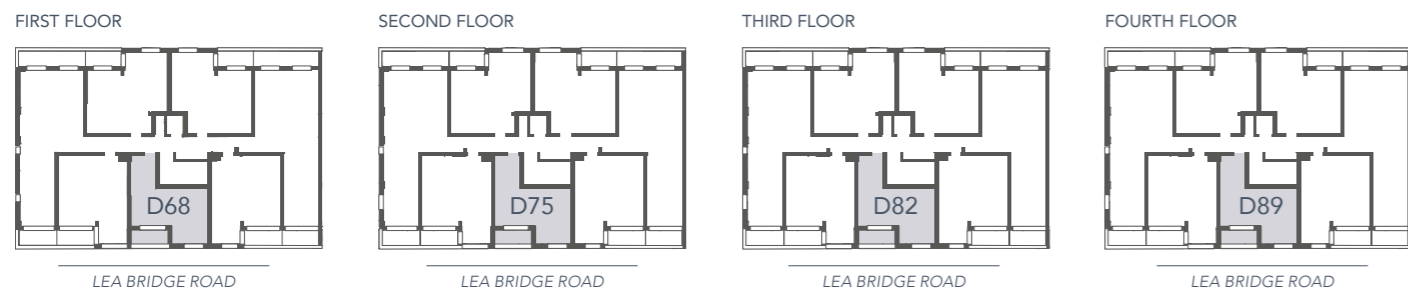
|                       |             |             |
|-----------------------|-------------|-------------|
| Living/Kitchen/Dining | 4.15 x 5.70 | 13'7 x 18'8 |
| Bedroom               | 3.40 x 3.15 | 11'1 x 10'4 |

\*Handed



▶ Measuring points    WD - Washer Dryer    W - Wardrobe    HIU - Heat Interface Unit    ST - Storage

▶ Measuring points    WD - Washer Dryer    W - Wardrobe    HIU - Heat Interface Unit    ST - Storage



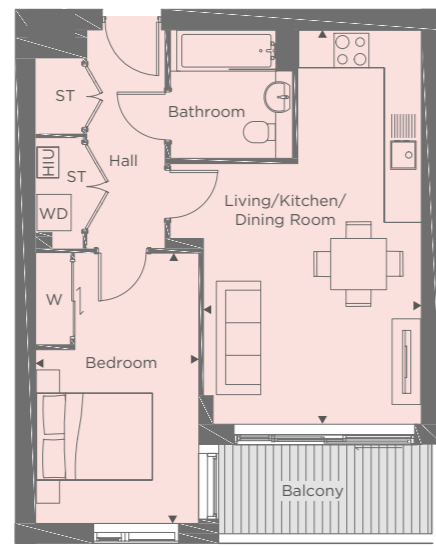
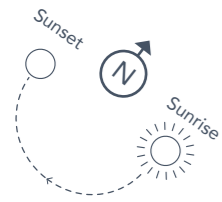
Apartment layouts provide approximate measurements only and are subject to planning. Dimensions, which are taken from the indicated points of measurement, are for guidance only and are not intended to be used for window treatments or items of furniture. Bathroom and kitchen layouts are indicative only and are subject to change. Wardrobe size and position may vary. The information contained within this document does not constitute part of any offer, contract or warranty. Whilst the plans have been prepared with all due care for the convenience of the intending purchaser, the information contained herein is a preliminary guide only.

Apartment layouts provide approximate measurements only and are subject to planning. Dimensions, which are taken from the indicated points of measurement, are for guidance only and are not intended to be used for window treatments or items of furniture. Bathroom and kitchen layouts are indicative only and are subject to change. Wardrobe size and position may vary. The information contained within this document does not constitute part of any offer, contract or warranty. Whilst the plans have been prepared with all due care for the convenience of the intending purchaser, the information contained herein is a preliminary guide only.

**PLOT D67, D69\*, D74, D76\*,  
D81, D83\*, D88, D90\***  
1 BEDROOM

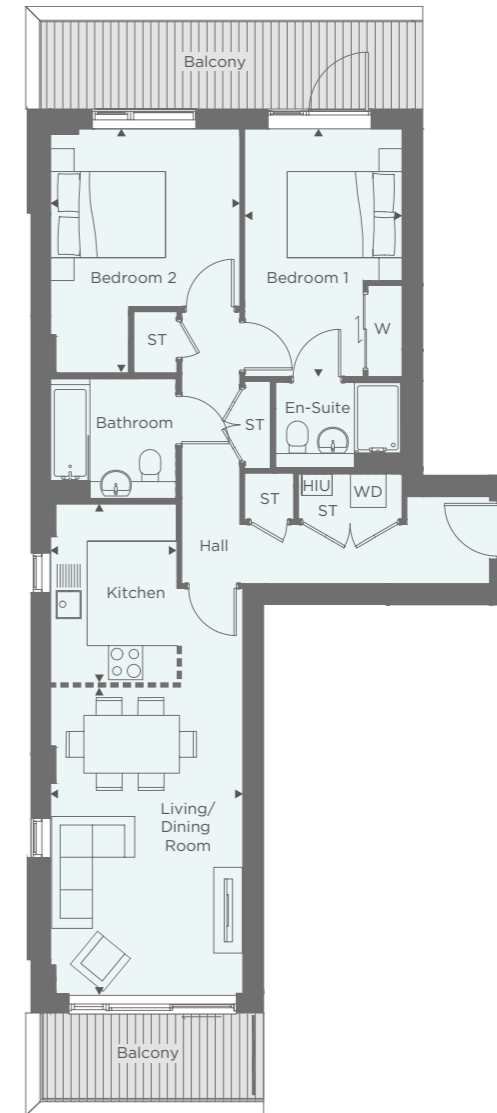
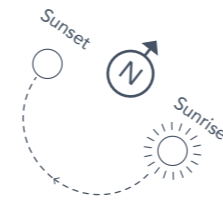
|                       |             |             |
|-----------------------|-------------|-------------|
| Living/Kitchen/Dining | 3.75 x 6.75 | 12'3 x 22'1 |
| Bedroom               | 2.80 x 4.60 | 9'2 x 15'1  |

\*Handed



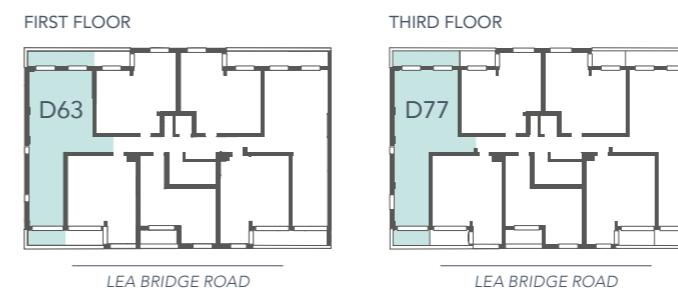
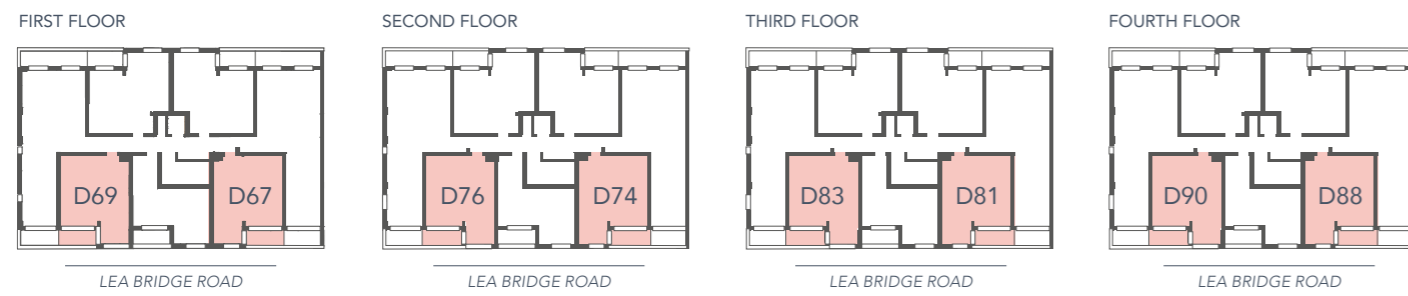
**PLOT D63, D77**  
2 BEDROOM

|                    |             |              |
|--------------------|-------------|--------------|
| Living/Dining Room | 3.35 x 5.30 | 10'11 x 17'4 |
| Kitchen            | 2.20 x 3.10 | 7'2 x 10'2   |
| Bedroom 1          | 2.75 x 4.30 | 9'0 x 14'1   |
| Bedroom 2          | 3.30 x 4.25 | 10'9 x 13'11 |



► Measuring points    WD - Washer Dryer    W - Wardrobe    HIU - Heat Interface Unit    ST - Storage

► Measuring points    WD - Washer Dryer    W - Wardrobe    HIU - Heat Interface Unit    ST - Storage    - - - - 1100mm high wall

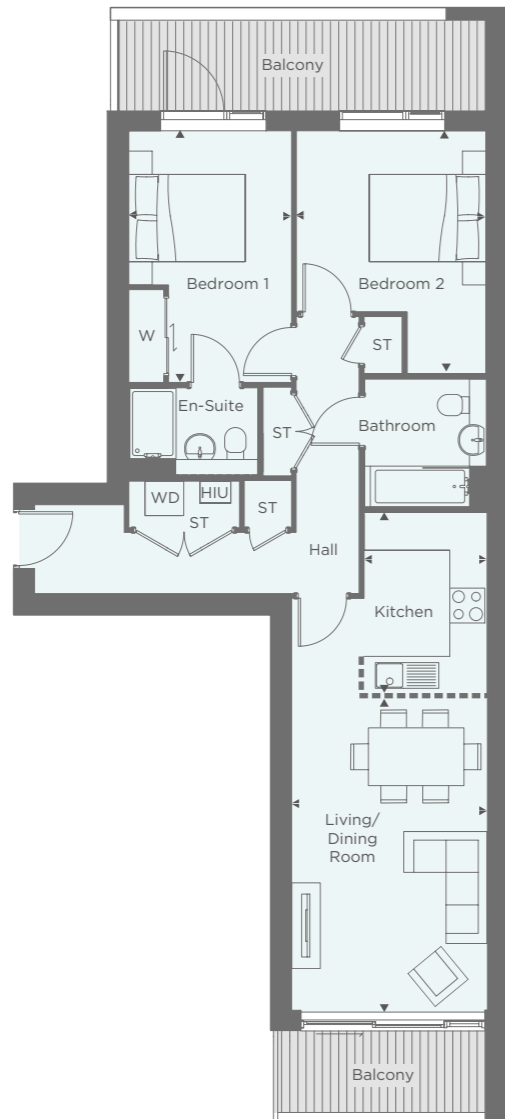
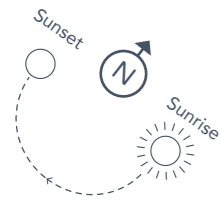


Apartment layouts provide approximate measurements only and are subject to planning. Dimensions, which are taken from the indicated points of measurement, are for guidance only and are not intended to be used for window treatments or items of furniture. Bathroom and kitchen layouts are indicative only and are subject to change. Wardrobe size and position may vary. The information contained within this document does not constitute part of any offer, contract or warranty. Whilst the plans have been prepared with all due care for the convenience of the intending purchaser, the information contained herein is a preliminary guide only.

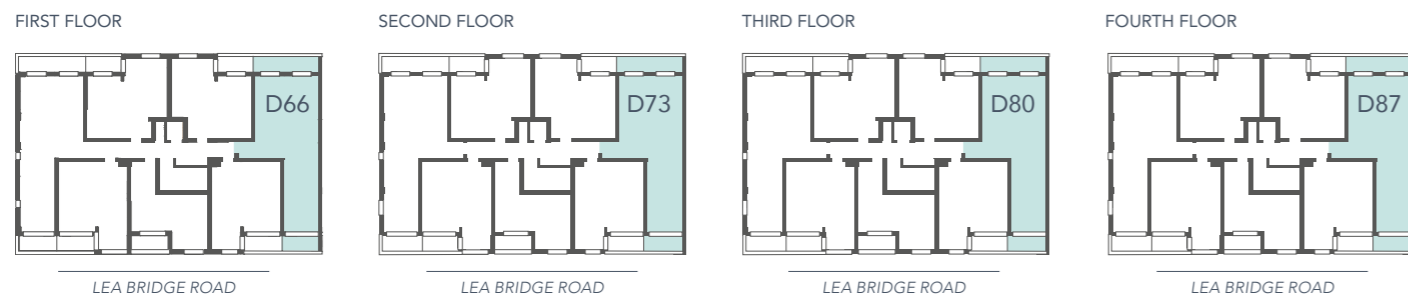
Apartment layouts provide approximate measurements only and are subject to planning. Dimensions, which are taken from the indicated points of measurement, are for guidance only and are not intended to be used for window treatments or items of furniture. Bathroom and kitchen layouts are indicative only and are subject to change. Wardrobe size and position may vary. The information contained within this document does not constitute part of any offer, contract or warranty. Whilst the plans have been prepared with all due care for the convenience of the intending purchaser, the information contained herein is a preliminary guide only.

**PLOT D66, D73, D80, D87**  
2 BEDROOM

|                    |             |              |
|--------------------|-------------|--------------|
| Living/Dining Room | 3.35 x 5.30 | 10'11 x 17'4 |
| Kitchen            | 2.10 x 3.10 | 6'10 x 10'2  |
| Bedroom 1          | 2.75 x 4.30 | 9'0 x 14'1   |
| Bedroom 2          | 3.25 x 4.15 | 10'7 x 13'7  |

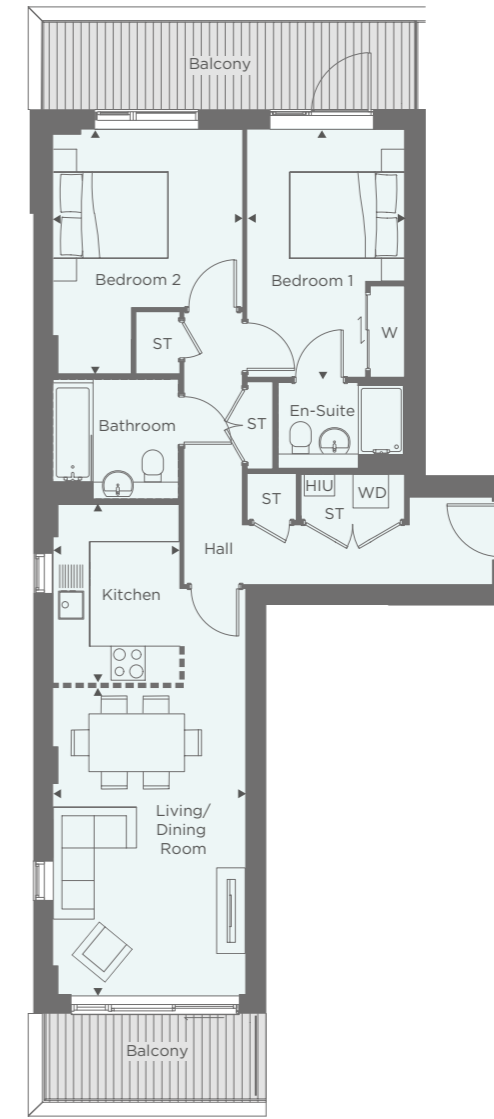
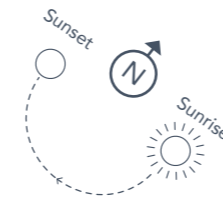


► Measuring points    WD - Washer Dryer    W - Wardrobe    HIU - Heat Interface Unit    ST - Storage    - - - - 1100mm high wall

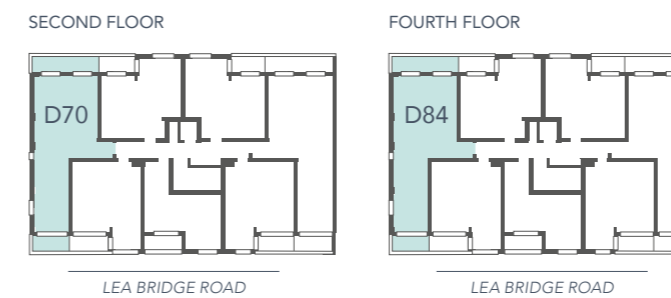


**PLOT D70, D84**  
2 BEDROOM

|                    |             |              |
|--------------------|-------------|--------------|
| Living/Dining Room | 3.35 x 5.35 | 10'11 x 17'6 |
| Kitchen            | 2.20 x 3.10 | 7'2 x 10'2   |
| Bedroom 1          | 2.75 x 4.30 | 9'0 x 14'1   |
| Bedroom 2          | 3.30 x 4.25 | 10'9 x 13'11 |



► Measuring points    WD - Washer Dryer    W - Wardrobe    HIU - Heat Interface Unit    ST - Storage    - - - - 1100mm high wall





# A UNIQUE COLLABORATION



Hill specialise in developing distinctive new homes across London and the South East.

We bring together award-winning contemporary design, sustainable materials and a sympathetic approach to create stunning, individual new properties and communities. We invest significant time and effort from the outset to ensure that all our properties achieve the perfect balance between innovation and practicality. As all construction work is carried out by ourselves, we are also able to guarantee the highest quality of finish within our homes.



Peabody has over 150 years of history, experience and expertise. With over 55,000 homes, we are one of the largest housing providers in London and the south-east. We deliver services to 111,000 residents, 8,000 care and support customers, and the wider communities in which we work.

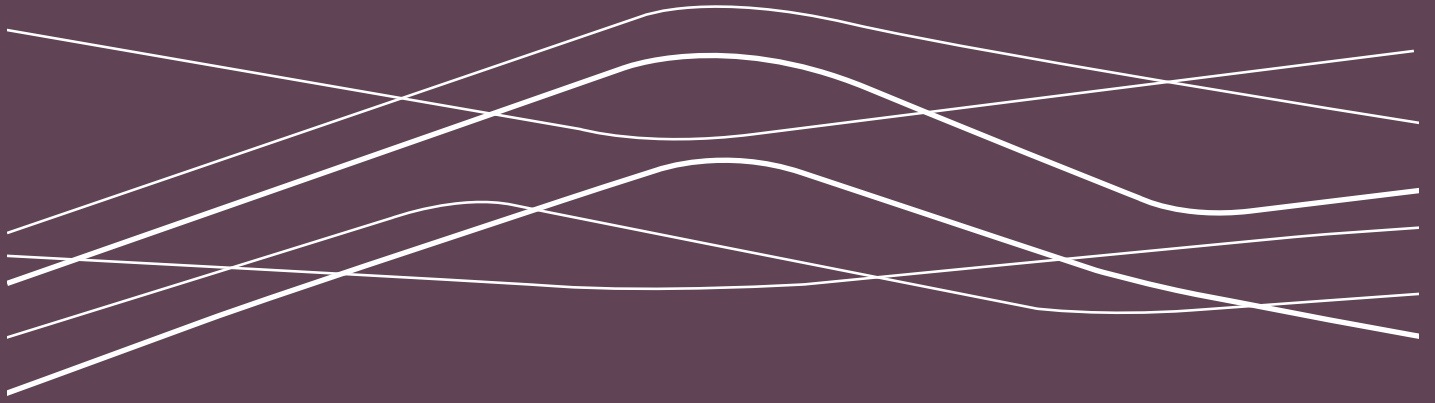
We focus on those who need our help the most, working with people and communities to build resilience and promote wellbeing. We create and invest in great places where people want to live.

Our ambitious housebuilding programme will deliver at least 2,500 homes every year.

**MOTION-E10.CO.UK | 020 3906 1955**

This brochure, and the description and measurements herein, do not form any part of a contract. Whilst every effort has been made to ensure accuracy, this cannot always be guaranteed. Site layouts, and specifications are taken from drawings which were correct at the time of print. All plans contained within this brochure are not to scale and room sizes are approximate and subject to change. Measurements contained within this brochure were taken from plans in metric measurements. Imperial measurements are for guidance purposes only. The information and imagery contained in this brochure is for guidance purposes only and does not constitute a contract, part of contract or warranty. Images of the Motion properties are computer generated and the landscaping may have been enhanced. Design and production DS.Emotion. Details correct at time of going to print January 2019.





A unique collaboration between

