

HELIX

SHARED OWNERSHIP



**Helix is a new collection
of 1, 2 and 3 bedroom
apartments and 2 and
4 bedroom maisonettes**



Computer generated image of Helix.

ENDLESS COMBINATIONS: HARLESDEN OLD AND NEW

Local people have helped to define a bright new future for Harlesden through active involvement in local planning.

RemixHelix is the final piece in the exciting recreation of New Stonebridge Park and part of Harlesden's major regeneration programme.

Heritage and diversity continue to be celebrated while a significant number of new properties, businesses and environments are helping to regenerate the area.

RemixHelix is part of the ongoing regeneration of Harlesden. Apartments within these two developments have been designed to give existing and new residents quality new homes, alongside new and improved public spaces and community facilities, and within easy reach of the transport connections from nearby Harlesden station.

Helix will deliver a vibrant mix of one, two and three bedroom apartments and two and four bedroom maisonettes for Shared Ownership set around a landscaped, communal area.

Remix, a recently completed phase of just 34 one and two bedroom apartments, has been built around courtyards and a central green space for residents to enjoy.

Located just a short journey from Harlesden High Street, which is in the process of being revamped, and the £5 billion regeneration at Old Oak Park, RemixHelix is a great place to live, giving you the best of Harlesden old and new.

Helix forms part of the award-winning New Stonebridge Park development, combining stylish new homes with a well-designed community setting. This is a place where residents enjoy London living, exactly as it should be.

**STYLE,
DESIGN AND
QUALITY
COMBINED**



MORE THAN JUST BRICKS AND MORTAR



BUILDING FOR THE FUTURE



Over £225 million has been invested in the regeneration of this corner of Harlesden. 1960s tower blocks have been replaced with 1,850 low rise homes and the whole community is served with newly created amenities.

Work began in 1998 and today there is a thriving community, complete with communal landscaped areas, a new community centre, new health centre, a café and a range of shops. The children's centre, designed by Will Alsop, was shortlisted for the Royal Institute of British Architects Stirling Prize in 2005.

The outdoor communal areas surrounding Helix have been designed as multifunctional spaces that bring people together. Neighbours can meet and socialise close to their homes whilst children can climb and play on sculptural features.

Many of the homes on the higher floors in Helix enjoy far-reaching views towards central London, adding to the sense of space and well-being this area has become known for.

Images of Canal Feeder, Fawood Nursery and the Remix development.

A COSMOPOLITAN COMMUNITY AND ECLECTIC TREATS

Harlesden is known as one of the most diverse areas in London, with its long-established Irish and Caribbean communities and newer arrivals from Brazil, Portugal, Somalia, Ghana, Nigeria, India and the Philippines.

Long time locals love to promote Harlesden highlighting the DIY attitude in the air that delivers wide-ranging experiences, tastes and entertainment.

You can delve into international supermarkets, open 24-hours, sample specialty foods from all over the world, and snap up household bargains from an array of independent shops.

Slightly further afield, around three miles from Helix, you'll find the independent Lexi Cinema which is run by volunteers with all proceeds going to charity, and the highly esteemed Tricycle Theatre. The theatre plays host to top notch drama and comedy.

Images of local amenities in Harlesden and Kensal Rise.



REAL DEAL CARIBBEAN FOOD

Sample it at Reggie's Caribbean Food, 55 Hillside. Whether you love this food already or want to try Caribbean cuisine for the first time, Reggie's team will make you feel welcome.

A LOCAL FAVOURITE

Beit el Zaytoun pays homage to the heritage of the Mediterranean, the bread and butter of its culture. The culture behind the House of Olives represents the true Mediterranean way of doing things; community driven, around the dinner table, raw and real.

DRAMATIC INNOVATION

Kiln Theatre describes itself as a local venue with an international vision that likes to bring unheard voices into the mainstream. It is incredibly proud of its location in the most diverse borough in London and definitely has the shows to match.

**GO WILD IN THE
AISLES OR
CATCH THE GAME**



BRILLIANT BARGAINS AND GOALS



Dedicating your day to browsing the shops is easy when you live in Helix. You're eight minutes by car to the London Designer Outlet, which means you're even closer to a match at Wembley Stadium.

London Designer Outlet is home to an incredible selection of brands, including your favourite sport and leisure ones. Adidas, Converse, Nike, Superdry, Vans and The North Face all have stores, alongside well-known cosmetics, chocolate, jeans and high street fashion brands.

There are plenty of places to enjoy a bite to eat before you head to the match at Wembley. Or you might want to join the North Circular Road and pay a visit to Ikea at Brent Park. It's an ideal place to gather some bright home furnishings and accessories for your new apartment.

The regeneration of Brent Cross is set to transform shopping in north west London and will rival White City's Westfield. The addition of 200 stores will just be a 15 minute drive away.

50+ DESIGNERS

The London Designer Outlet has something for everyone, from fashion brands to gifts for the home.

Images of Wembley Park and the London Designer Outlet.



GRADE II LISTED GREEN SPACE

Roundwood Park is a formal Victorian Park with English Heritage Grade II listed status.



Images of Roundwood Park.



WEEKEND WANDERS AND WORK DAY PONDERERS

Measuring 26.5 acres, Roundwood Park is popular all through the week. Local workers take their breaks here, young families enjoy the fresh air, and at the weekend, walkers, joggers and nature lovers enjoy the space.

The Lodge Café in Roundwood Park is a convenient place to stop and grab a coffee. The café has a children’s playground, sandpit and outdoor seating area just next door to accommodate all ages.

The central pathway running through the park is lined with rosebushes and plenty of benches, allowing you to stop and watch the world go by.

You can also take in the abundance of floral displays at the 100th anniversary Victorian-style gazebo.

CENTRAL FOR THE GLAMOUR AND EAST FOR THE CITY

The journey from your Helix apartment to the West End or The City couldn't be simpler. Harlesden is a well-connected suburb that makes London living a breeze.



A HIDDEN GEM

Chiswick is one of the leafiest and prettiest neighbourhoods in the capital. Just under a 30-minute cycle away from the development, you can find yourself immersed in this leafy and affluent district with a distinct village feel. Eat and drink at one of the many bistros, restaurants and wine bars and explore the vast grounds of Syon House and gardens. A true gem hidden within the city.

LONDON'S WEST END

You'll find shops, theatres, bars and galleries in high quantities if you travel from Harlesden to the West End. It's a single tube line from Harlesden to Oxford Circus and from there it's an easy walk to everywhere.

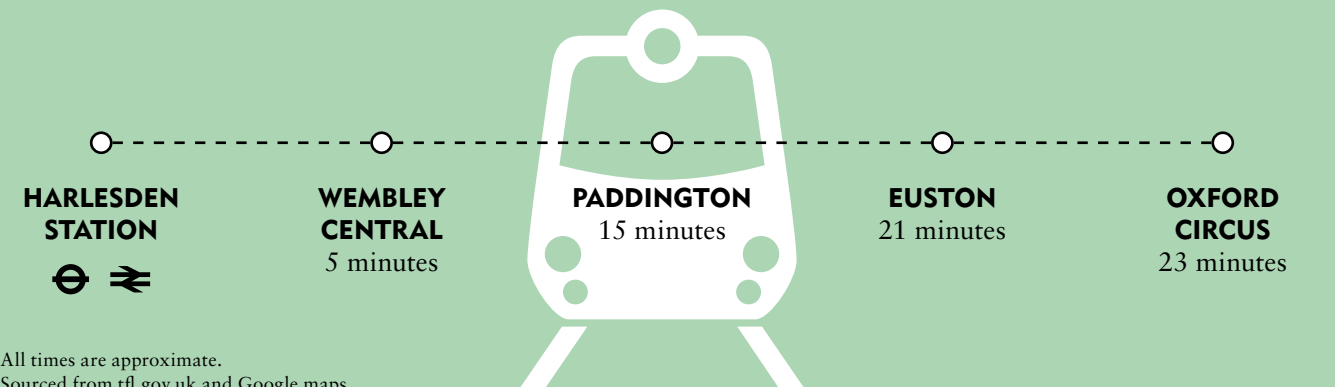
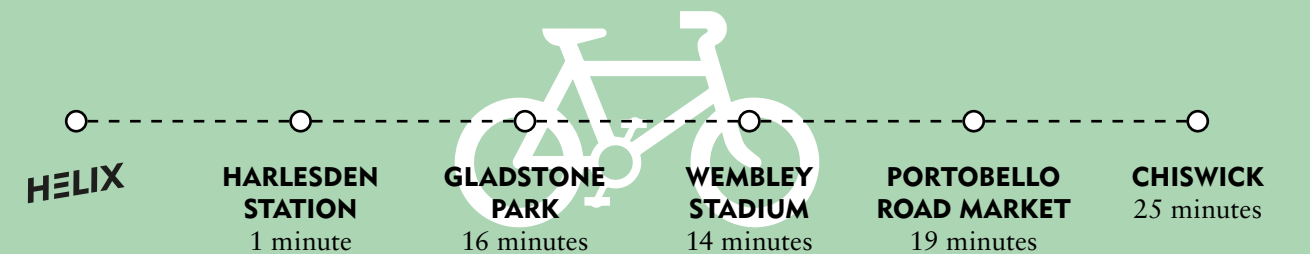
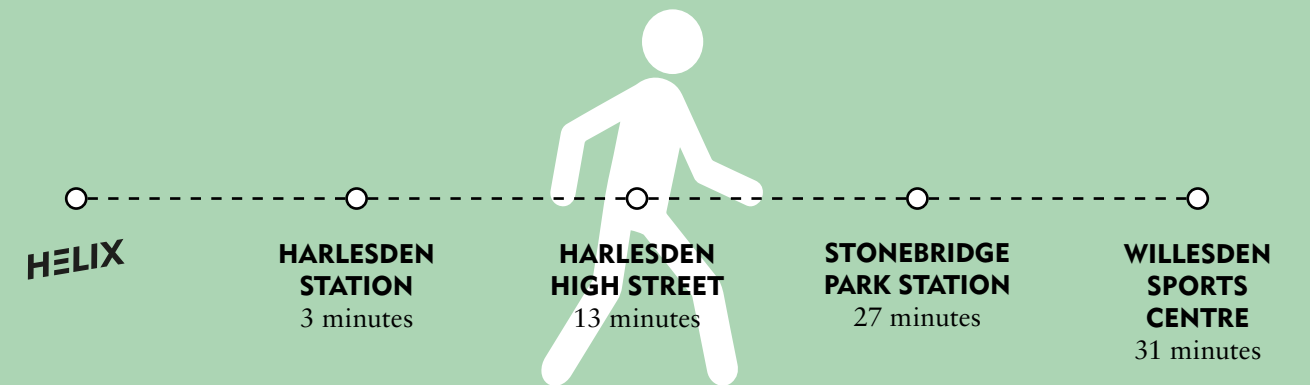
CITY STREETS

The City of London hosts numerous architectural landmarks, everything from the dome of St Paul's Cathedral to the sharp point of The Shard. Redevelopment has also ensured a vast choice of shops, bars and restaurants, making the City a destination at the weekend, as well as the working week.

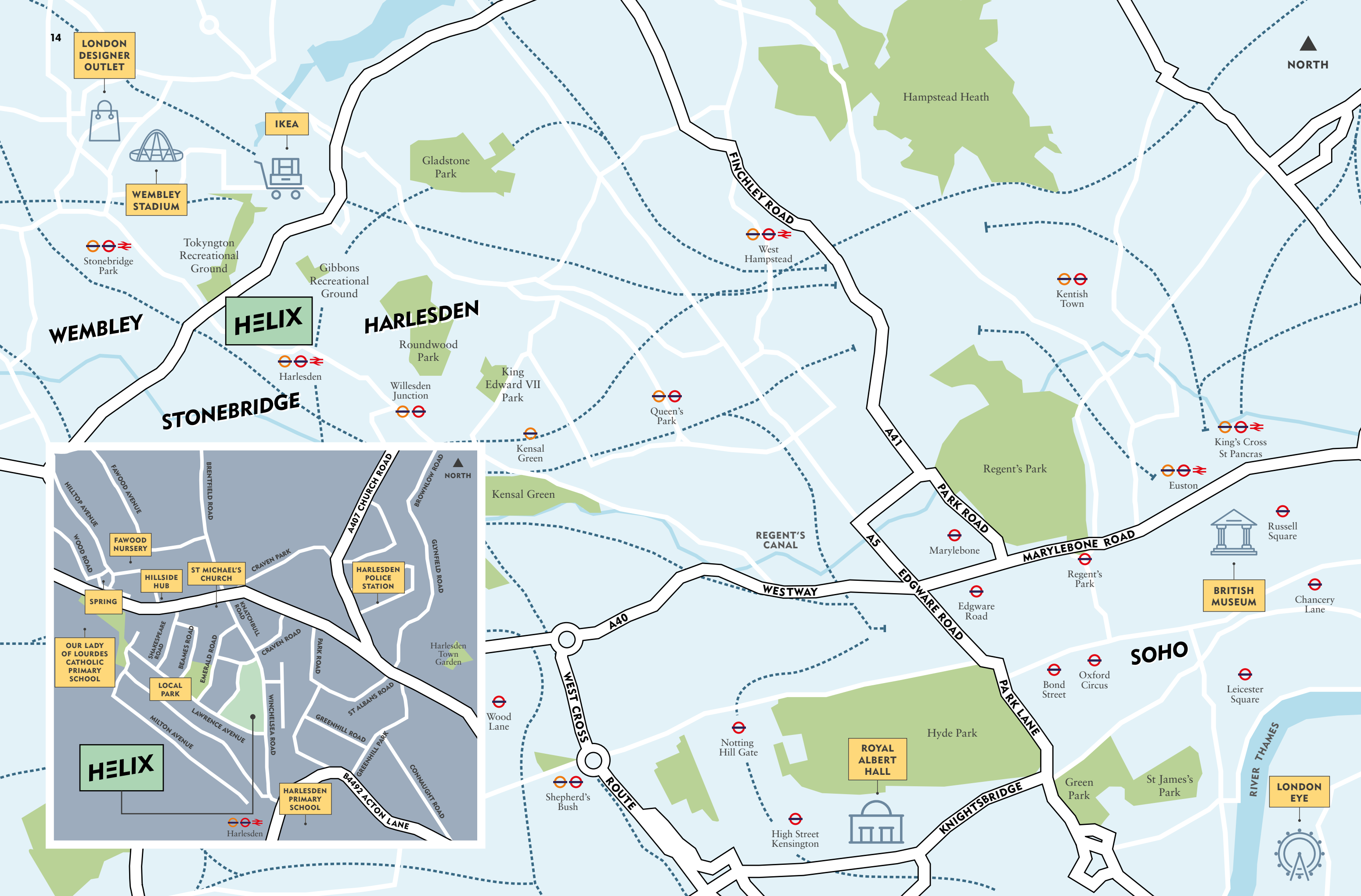
Images of Syon House, St Paul's Cathedral and Oxford Circus.

If you're travelling to central London, the closest station is Harlesden. Take the Bakerloo line and reach Oxford Circus in just 24 minutes, or head to Euston via London Overground in 17 minutes.

Slightly further away is Willesden Junction where you can pick up the Metropolitan line to Wembley Park. Numerous buses also serve the area and cycling gets you to the centre of London very quickly. It's only seven miles away.



All times are approximate. Sourced from tfl.gov.uk and Google maps.



14
LONDON DESIGNER OUTLET

IKEA

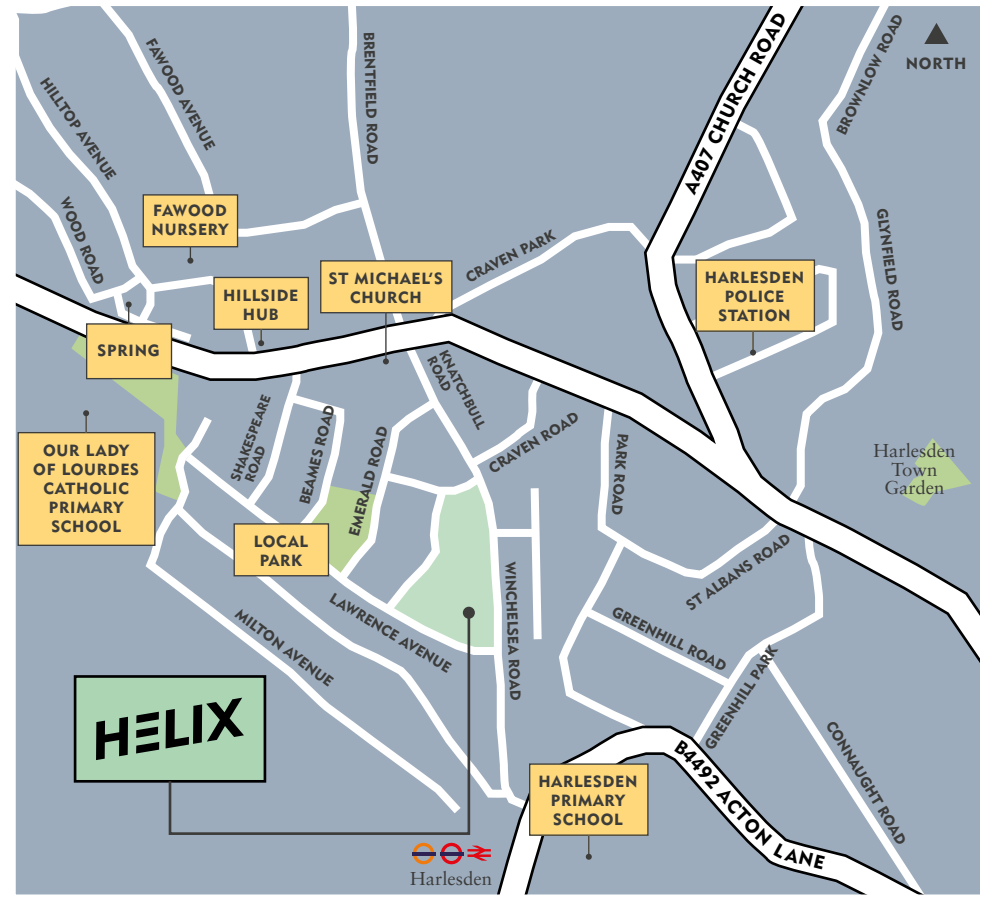
WEMBLEY STADIUM

HELIX

HARLESDEN

WEMBLEY

STONEBRIDGE



HELIX

HARLESDEN PRIMARY SCHOOL

HARLESDEN POLICE STATION

ST MICHAEL'S CHURCH

LOCAL PARK

OUR LADY OF LOURDES CATHOLIC PRIMARY SCHOOL

SPRING

HILLSIDE HUB

FAWOOD NURSERY

Hampstead Heath

Gladstone Park

Gibbons Recreational Ground

Tokyngton Recreational Ground

Stonebridge Park

Harlesden

Willesden Junction

King Edward VII Park

Roundwood Park

Queen's Park

Kensal Green

Kensal Green

West Hampstead

Kentish Town

King's Cross St Pancras

Euston

Russell Square

BRITISH MUSEUM

Chancery Lane

Regent's Park

Marylebone

Edgware Road

SOHO

Bond Street

Oxford Circus

Leicester Square

Hyde Park

ROYAL ALBERT HALL

Notting Hill Gate

High Street Kensington

Shepherd's Bush

Wood Lane

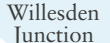
LONDON EYE

RIVER THAMES



NORTH

14



MASTER PLAN

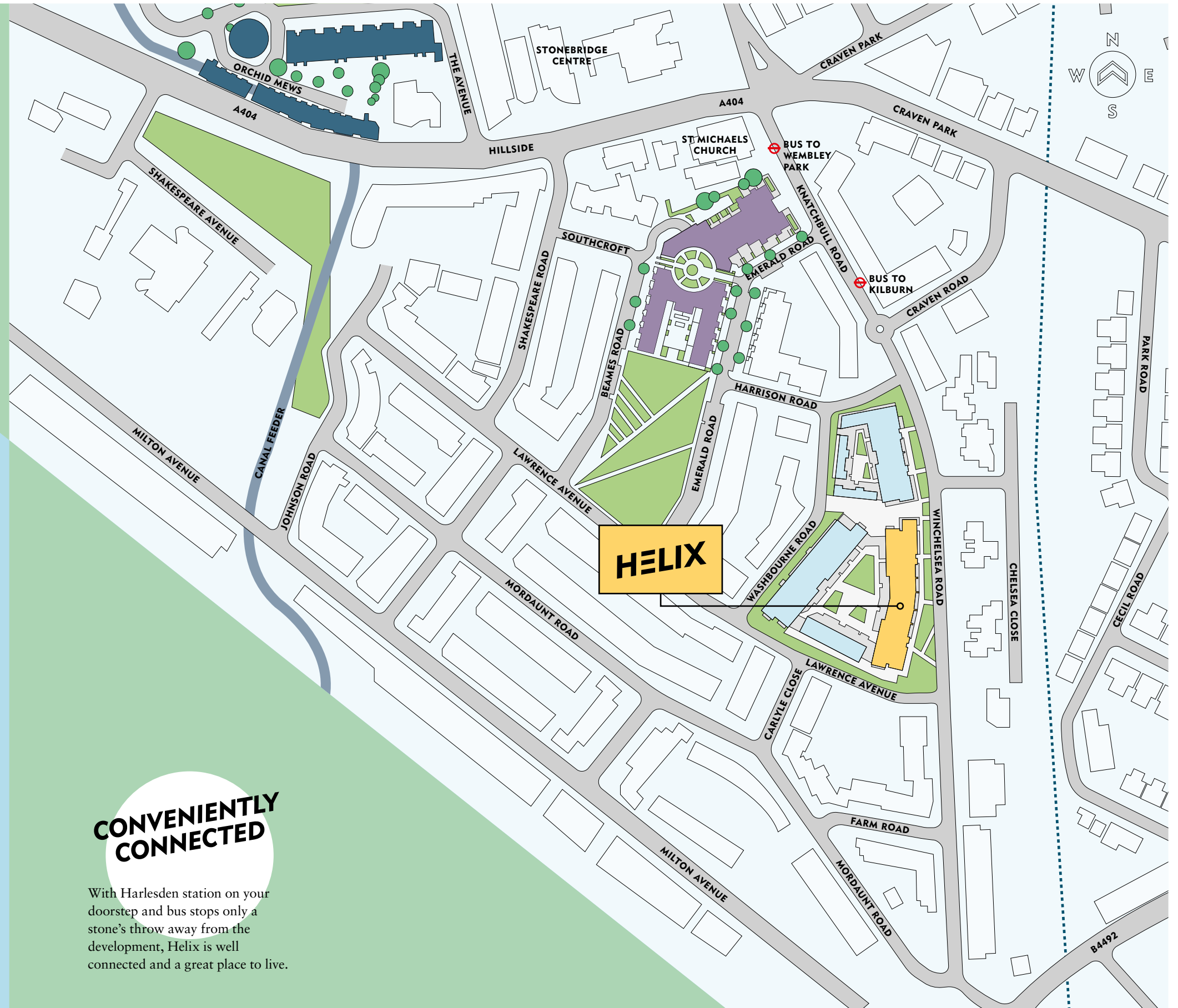
Helix is fully integrated into this brand new community, being close to the local amenities, communal gardens and the award-winning Fawood Nursery.

Stonebridge Centre is the centre of activity and has played an important role during the regeneration of New Stonebridge Park.

A mixed-use community centre, health centre and Tesco Express, alongside sustainable housing, play parks and green spaces make this a highly desirable place to live.

- HELIX – SHARED OWNERSHIP
- HELIX – AFFORDABLE RENT
- REMIX
Completed phase
- SPRING
Completed phase

Site plan indicative.
To be used for block indication purposes only.
See our sales team for more detailed information regarding site layout, landscaping and parking.

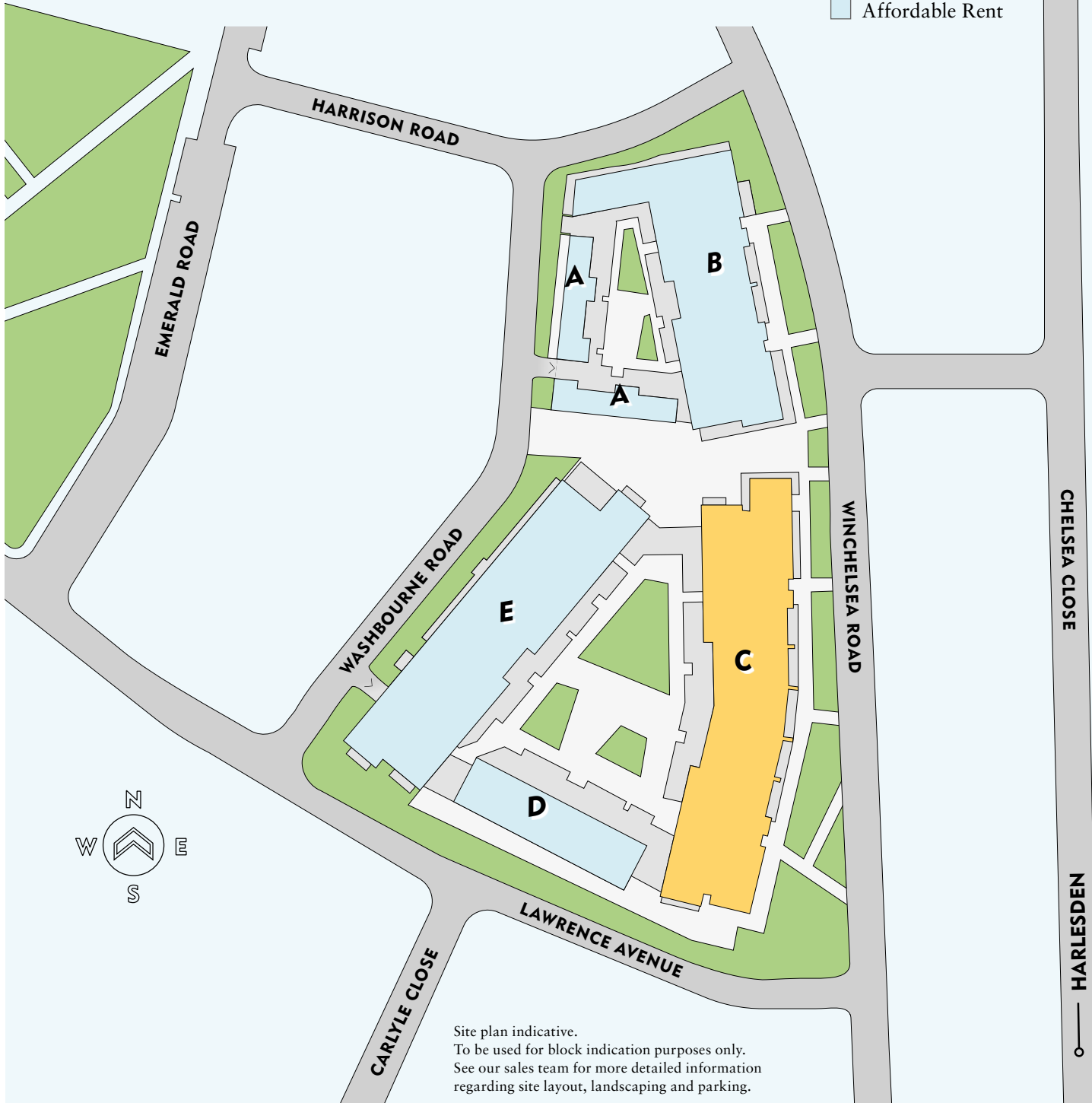


CONVENIENTLY CONNECTED

With Harlesden station on your doorstep and bus stops only a stone's throw away from the development, Helix is well connected and a great place to live.

HELIX SITE PLAN

- Shared Ownership
- Affordable Rent

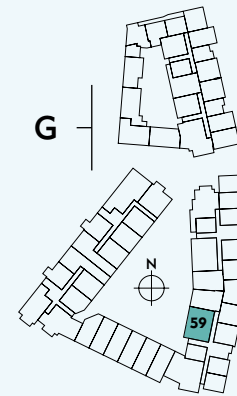
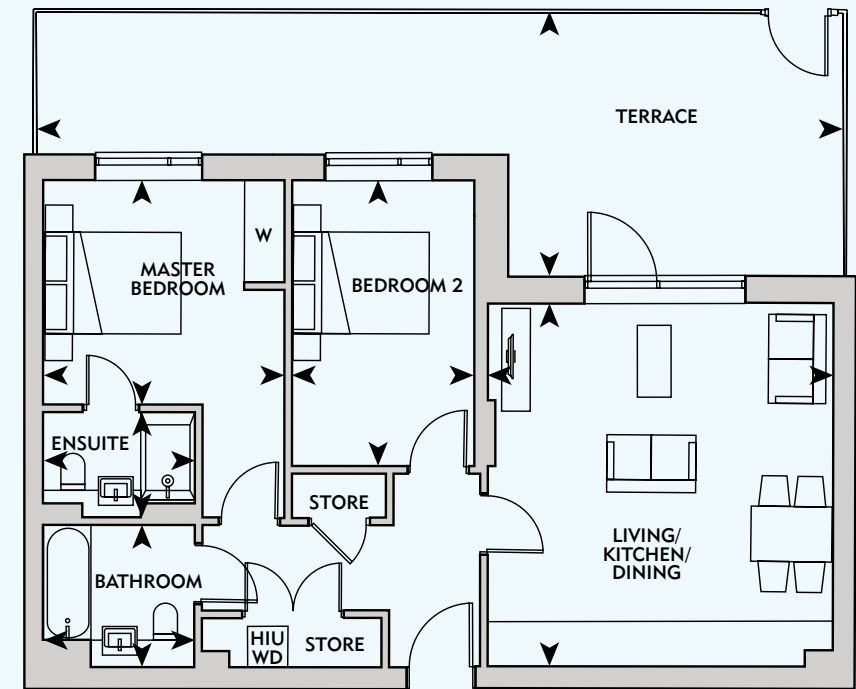


Site plan indicative.
To be used for block indication purposes only.
See our sales team for more detailed information regarding site layout, landscaping and parking.

PLOT

BLOCK C
59

2 BEDROOM



Living/Kitchen/Dining	5.35m x 5.00m	17'6" x 16'4"
Master Bedroom	3.50m x 3.25m	11'5" x 10'7"
Bedroom 2	4.20m x 2.75m	13'9" x 9'0"
Bathroom	2.20m x 2.10m	7'2" x 6'10"
Ensuite	2.20m x 1.55m	7'2" x 5'1"
Total Internal Area	73 sq m	785.7 sq ft
Terrace	11.80m x 3.80m	38'8" x 12'5"

KEY

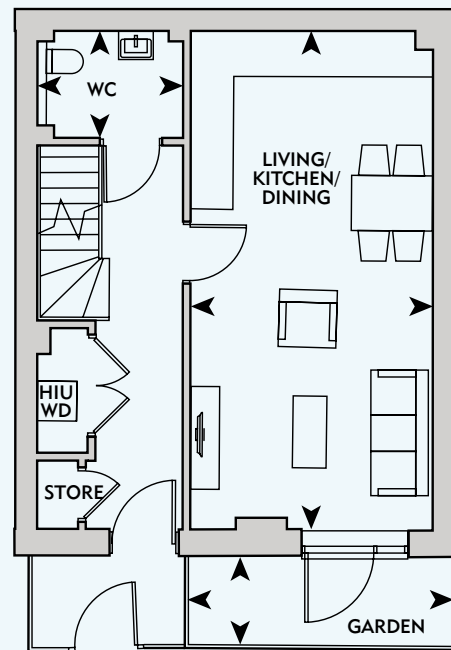
- WD** Washer/Dryer
- HIU** Heat Interface Unit
- W** Wardrobe

PLOT

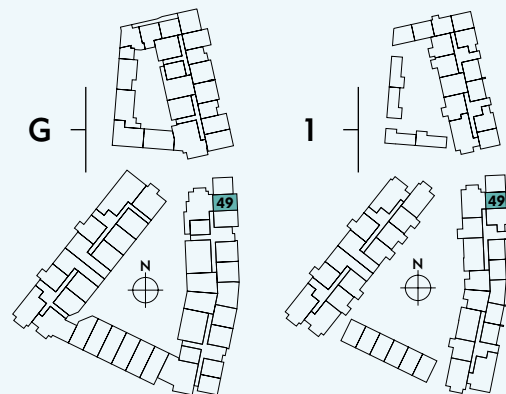
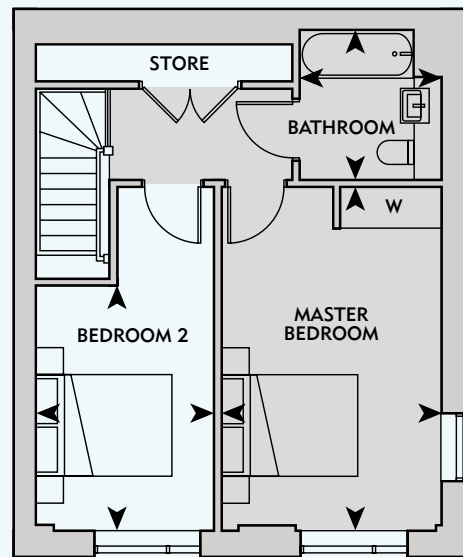
BLOCK C
49

2 BEDROOM

GROUND FLOOR



FIRST FLOOR



Please note: Shaded area – reduced ceiling height = 2.4m

KEY

Living/Kitchen/Dining	7.35m x 3.50m	24'1" x 11'5"
Master Bedroom	5.00m x 3.20m	16'4" x 10'5"
Bedroom 2	3.90m x 2.60m	12'9" x 8'6"
Bathroom	2.20m x 2.10m	7'2" x 6'10"
WC	2.10m x 1.50m	6'10" x 4'11"
Total Internal Area	87 sq m	936.4 sq ft
Garden	3.90m x 1.35m	12'9" x 4'5"

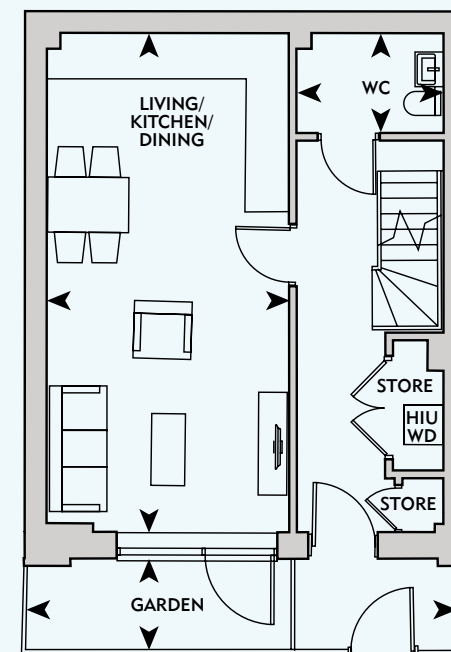
WD	Washer/Dryer
HIU	Heat Interface Unit
W	Wardrobe

PLOT

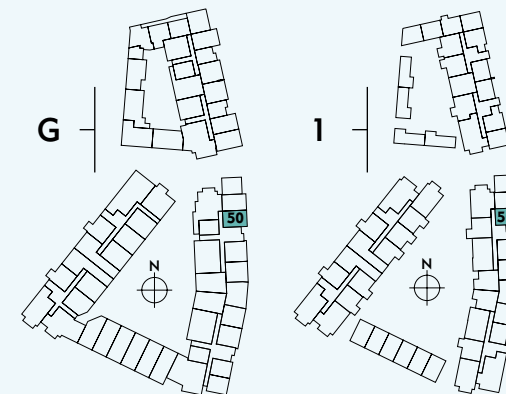
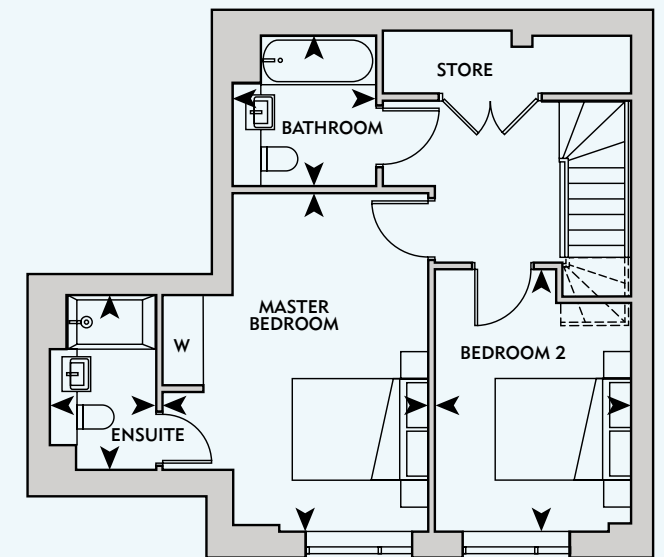
BLOCK C
50

2 BEDROOM

GROUND FLOOR



FIRST FLOOR



KEY

Living/Kitchen/Dining	7.25m x 3.50m	23'9" x 11'5"
Master Bedroom	5.00m x 2.85m	16'4" x 9'4"
Bedroom 2	3.75m x 2.95m	12'3" x 9'8"
Bathroom	2.20m x 2.10m	7'2" x 6'10"
Ensuite	2.50m x 1.55m	8'2" x 5'1"
WC	1.85m x 1.50m	6'0" x 4'11"
Total Internal Area	93 sq m	1001.0 sq ft
Garden	6.20m x 1.95m	20'4" x 6'4"

WD	Washer/Dryer
HIU	Heat Interface Unit
W	Wardrobe

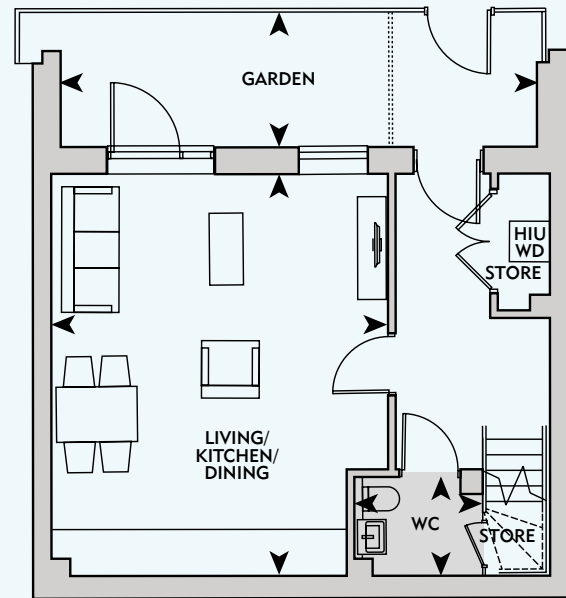
PLOTS

BLOCK C
51, 52, 54*, 55*

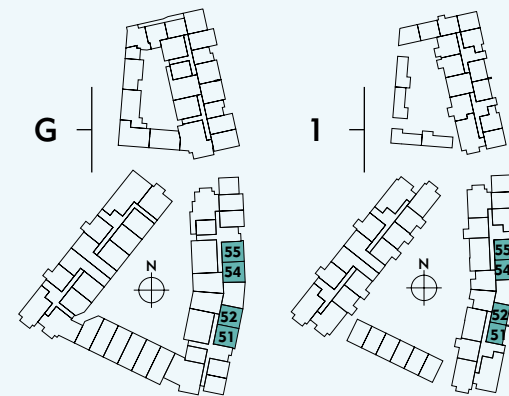
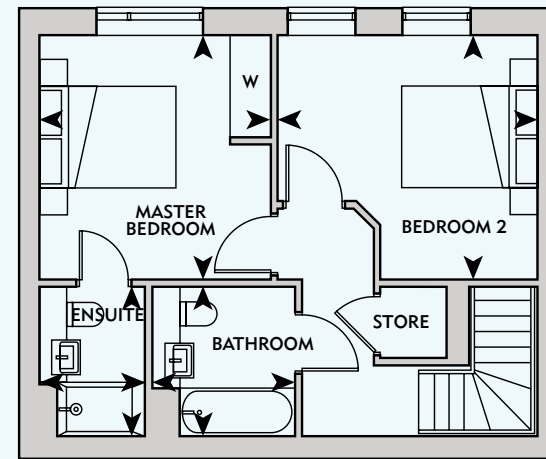
2 BEDROOM

*handed

GROUND FLOOR



FIRST FLOOR



Please note: Shaded area – reduced ceiling height = 2.37m

KEY

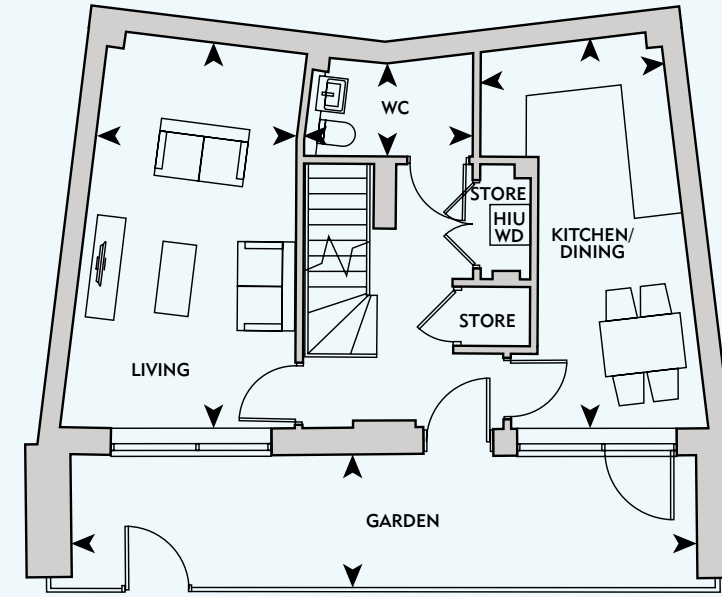
Living/Kitchen/Dining	5.80m x 5.10m	19'0" x 16'8"
Master Bedroom	3.55m x 3.35m	11'7" x 10'11"
Bedroom 2	3.80m x 3.50m	12'5" x 11'5"
Bathroom	2.20m x 2.10m	7'2" x 6'10"
Ensuite	2.20m x 1.55m	7'2" x 5'1"
WC	1.80m x 1.45m	5'10" x 4'9"
Total Internal Area	86 sq m	925.6 sq ft
Garden	6.90m x 2.00m	22'7" x 6'6"

WD	Washer/Dryer
HIU	Heat Interface Unit
W	Wardrobe

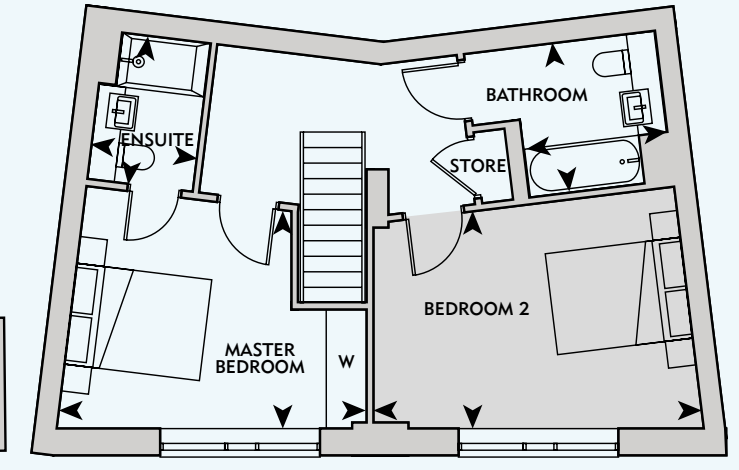
PLOT

BLOCK C
53

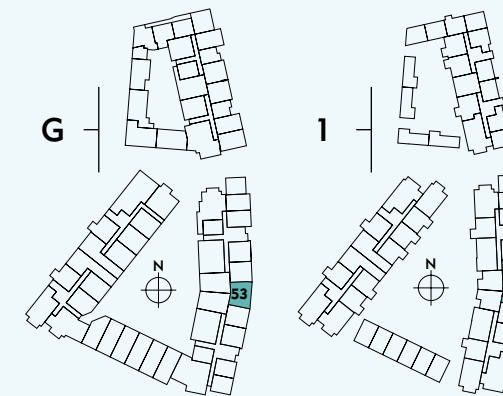
2 BEDROOM



GROUND FLOOR



FIRST FLOOR



Please note: Shaded area – reduced ceiling height = 2.4m

KEY

Kitchen/Dining	5.40m x 2.60m	17'8" x 8'6"
Living	5.40m x 2.70m	17'8" x 8'10"
Master Bedroom	4.55m x 3.20m	14'3" x 10'5"
Bedroom 2	4.80m x 3.00m	15'8" x 9'10"
Bathroom	2.20m x 2.10m	7'2" x 6'10"
Ensuite	2.10m x 1.55m	6'10" x 5'1"
WC	2.50m x 1.40m	8'2" x 4'7"
Total Internal Area	98 sq m	1054.8 sq ft
Garden	9.20m x 2.00m	30'2" x 6'6"

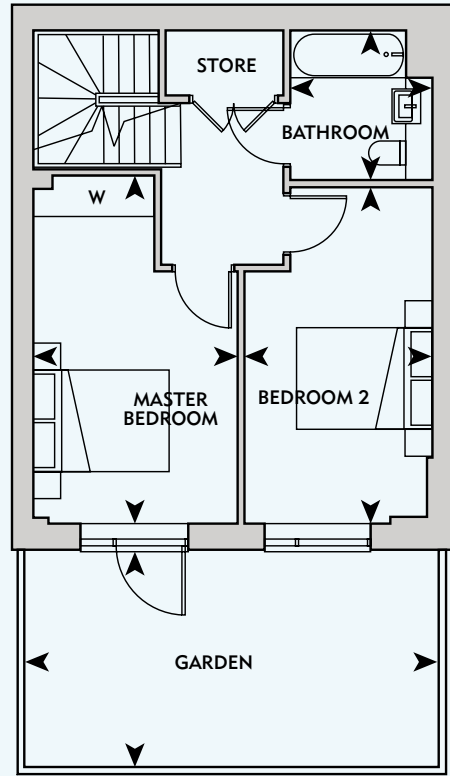
WD	Washer/Dryer
HIU	Heat Interface Unit
W	Wardrobe

PLOT

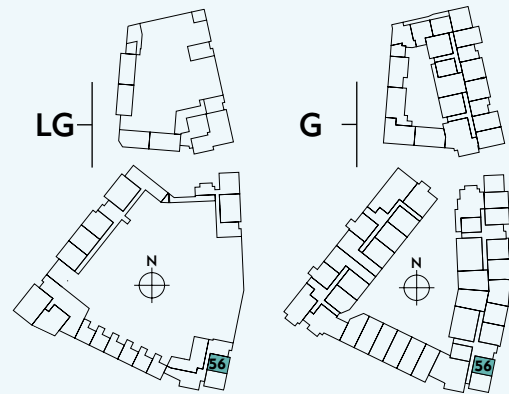
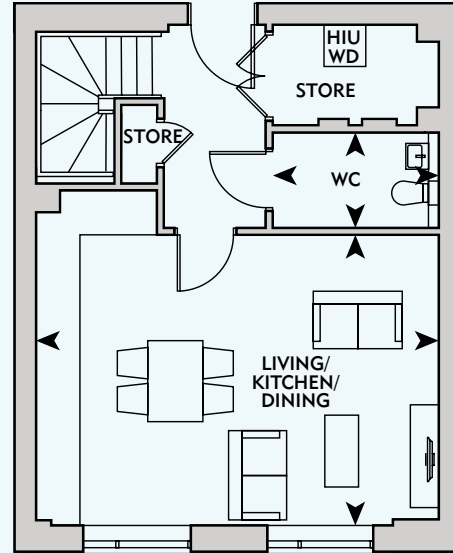
BLOCK C
56

2 BEDROOM

LOWER GROUND FLOOR



GROUND FLOOR



Living/Kitchen/Dining	6.00m x 4.25m	19'8" x 13'11"
Master Bedroom	5.10m x 3.00m	16'8" x 9'10"
Bedroom 2	4.85m x 2.75m	15'10" x 9'0"
Bathroom	2.20m x 2.10m	7'2" x 6'10"
WC	2.40m x 1.40m	7'10" x 4'7"
Total Internal Area	87 sq m	936.4 sq ft
Garden	5.00m x 3.15m	16'4" x 10'4"

KEY

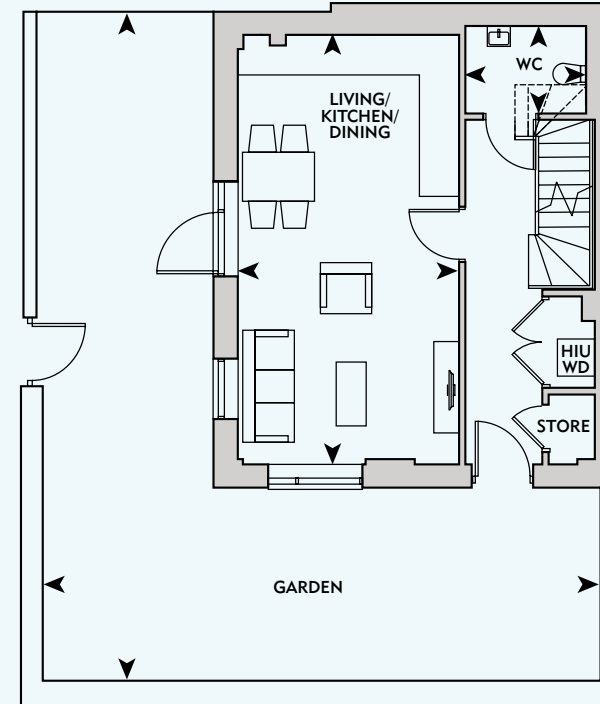
WD	Washer/Dryer
HIU	Heat Interface Unit
W	Wardrobe

PLOT

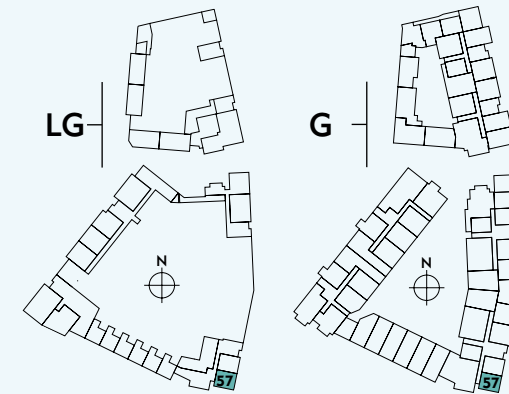
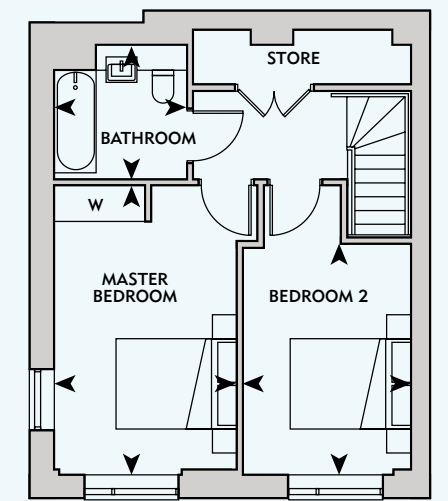
BLOCK C
57

2 BEDROOM

LOWER GROUND FLOOR



GROUND FLOOR



Living/Kitchen/Dining	7.10m x 3.65m	23'3" x 11'11"
Master Bedroom	4.75m x 3.00m	15'7" x 9'10"
Bedroom 2	4.75m x 2.75m	15'7" x 9'0"
Bathroom	2.20m x 2.20m	7'2" x 7'2"
WC	2.10m x 1.45m	6'10" x 4'9"
Total Internal Area	85 sq m	914.9 sq ft
Garden	11.10m x 9.20m	36'5" x 30'2"

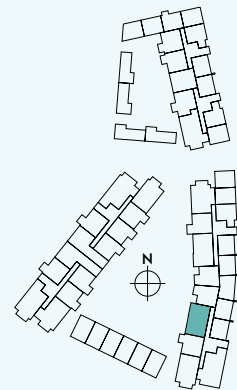
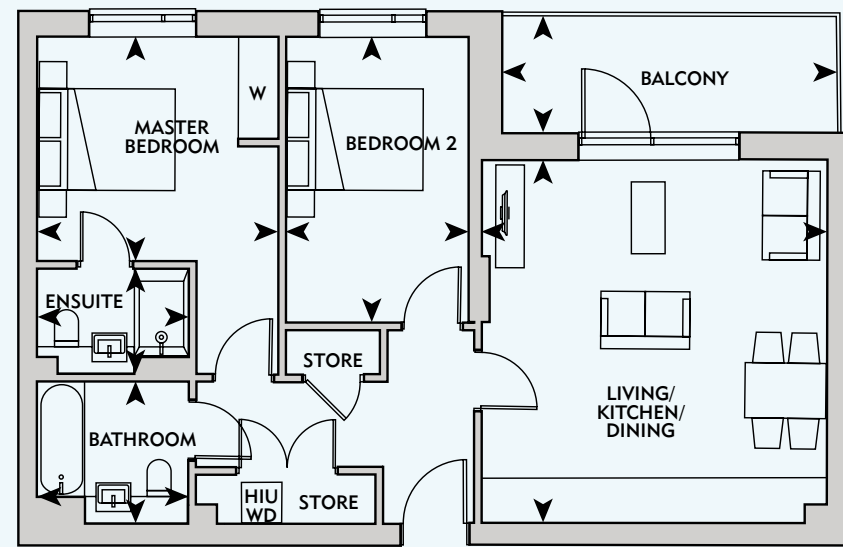
KEY

WD	Washer/Dryer
HIU	Heat Interface Unit
W	Wardrobe

PLOTS

BLOCK C
66, 80, 94, 108, 115

2 BEDROOM



Living/Kitchen/Dining	5.35m x 5.00m	17'6" x 16'4"
Master Bedroom	3.50m x 3.25m	11'5" x 10'7"
Bedroom 2	4.20m x 2.75m	13'9" x 9'0"
Bathroom	2.20m x 2.10m	7'2" x 6'10"
Ensuite	2.20m x 1.55m	7'2" x 5'1"
Total Internal Area	73 sq m	785.7 sq ft
Balcony	4.75m x 1.85m	15'7" x 6'0"

KEY

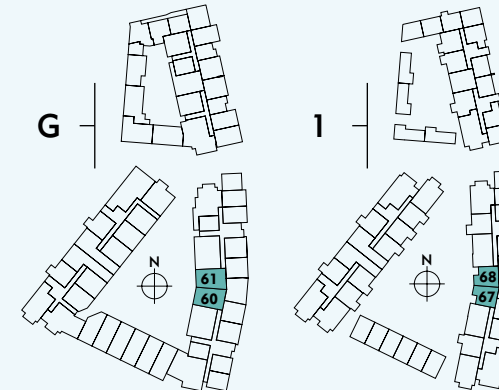
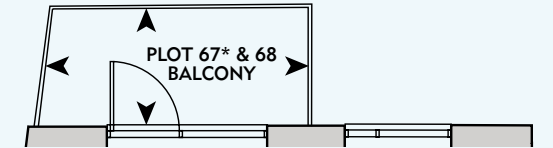
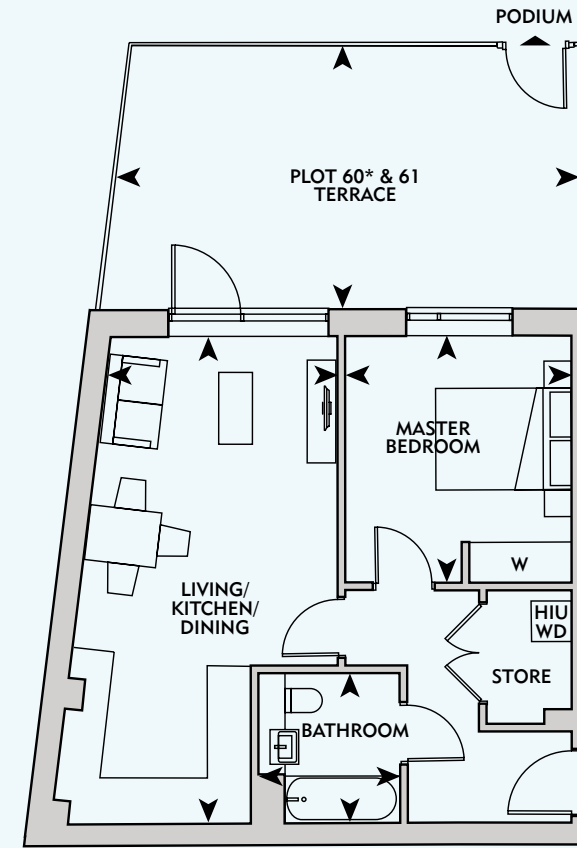
- WD** Washer/Dryer
- HIU** Heat Interface Unit
- W** Wardrobe

PLOTS

BLOCK C
60*, 61, 67*, 68

1 BEDROOM

*handed



Living/Kitchen/Dining	7.10m x 3.35m	23'3" x 10'11"
Master Bedroom	3.60m x 3.30m	11'9" x 10'9"
Bathroom	2.20m x 2.10m	7'2" x 6'10"
Total Internal Area	52 sq m	559.7 sq ft
Terrace	6.80m x 3.80m	22'3" x 12'5"
Plot 67 & 68 Balcony	3.80m x 1.85m	12'5" x 6'0"

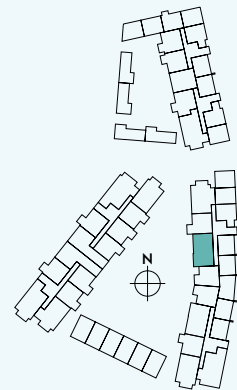
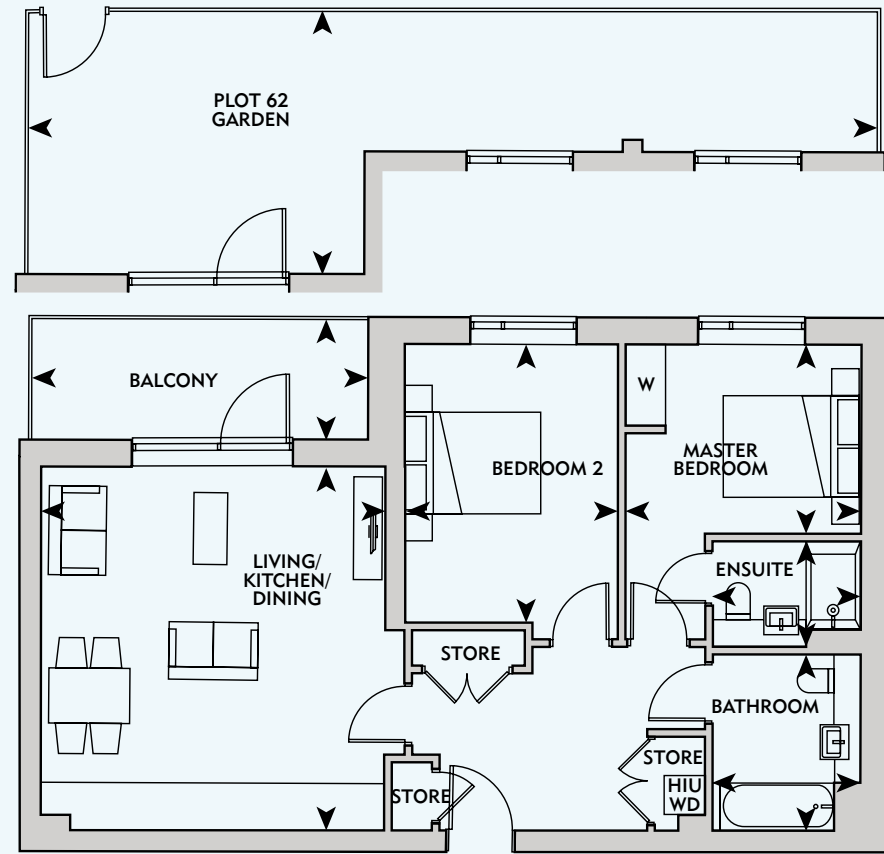
KEY

- WD** Washer/Dryer
- HIU** Heat Interface Unit
- W** Wardrobe

PLOTS

BLOCK C
62, 69, 83, 97, 111, 118

2 BEDROOM



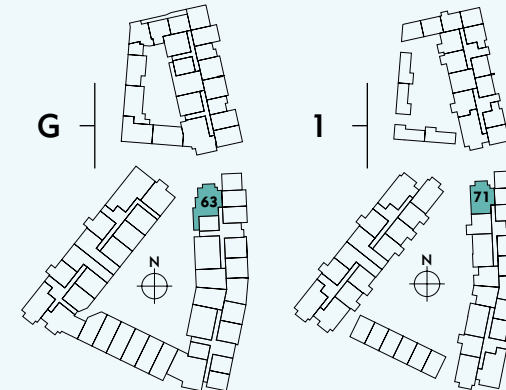
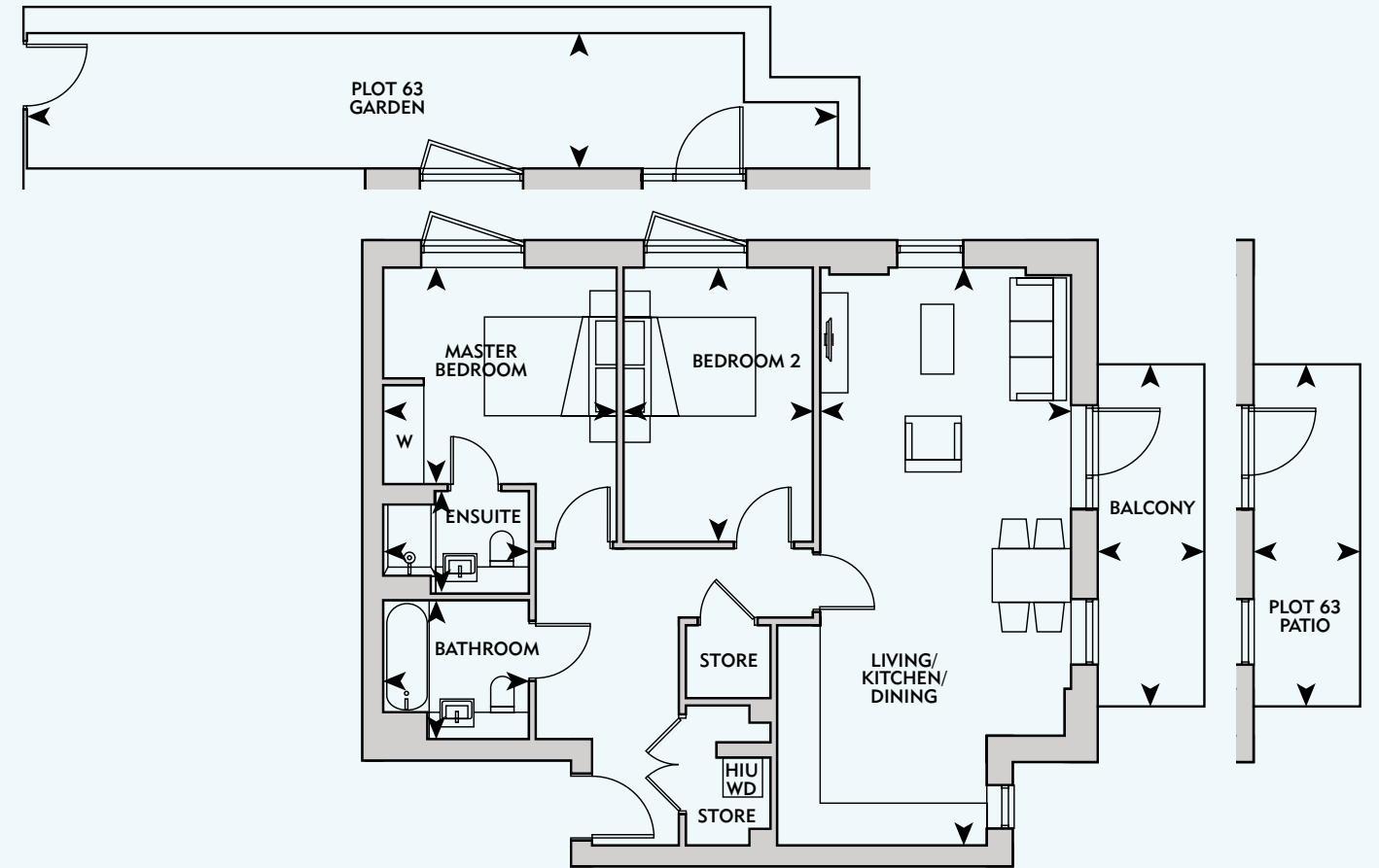
Living/Kitchen/Dining	5.35m x 5.00m	17'6" x 16'4"
Master Bedroom	3.45m x 2.75m	11'3" x 9'0"
Bedroom 2	4.10m x 3.20m	13'5" x 10'5"
Bathroom	2.60m x 2.20m	8'6" x 7'2"
Ensuite	2.20m x 1.55m	7'2" x 5'1"
Total Internal Area	77 sq m	828.8 sq ft
Balcony	4.85m x 1.85m	15'10" x 6'0"
Plot 62 Garden	12.30m x 3.80m	40'4" x 12'5"

KEY
WD Washer/Dryer
HIU Heat Interface Unit
W Wardrobe

PLOTS

BLOCK C
63, 71

2 BEDROOM



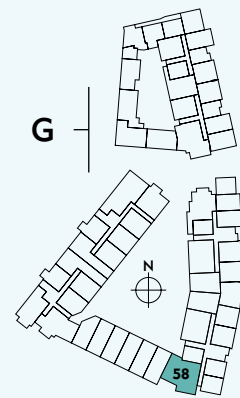
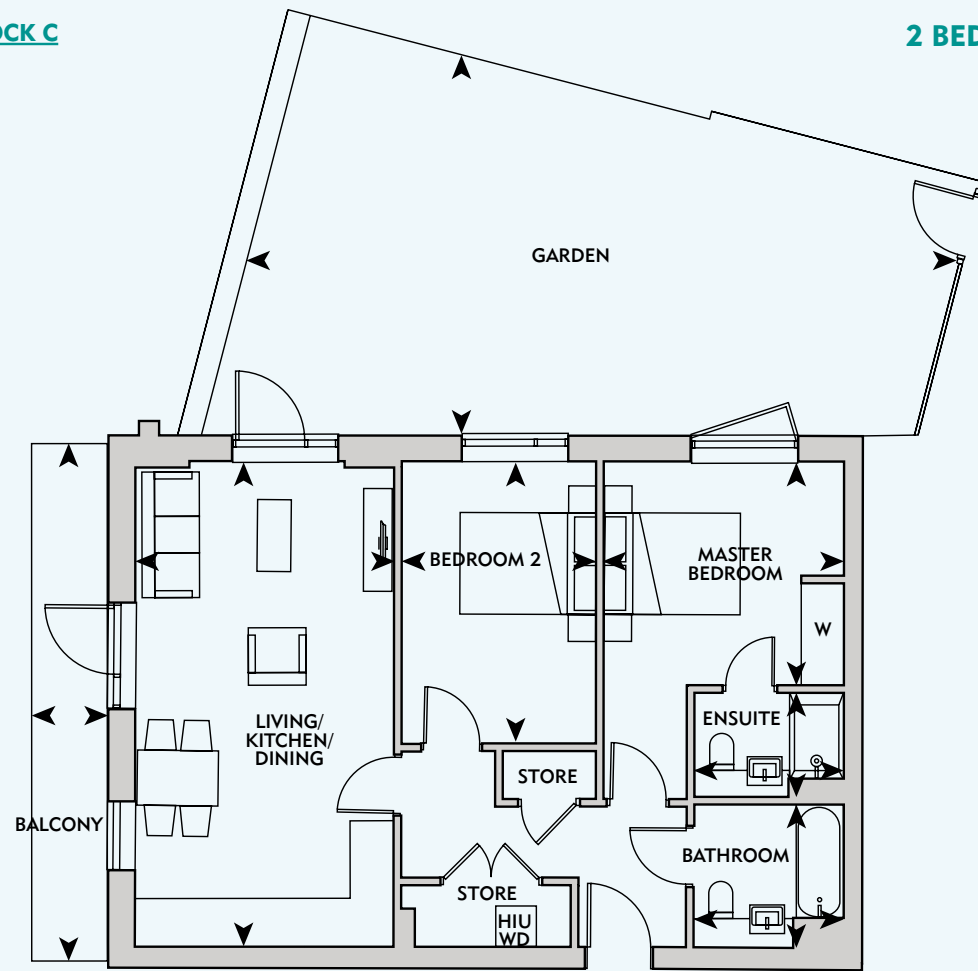
Living/Kitchen/Dining	8.80m x 3.75m	28'10" x 12'3"
Master Bedroom	3.50m x 3.25m	11'5" x 10'7"
Bedroom 2	4.15m x 2.85m	13'7" x 9'4"
Bathroom	2.20m x 2.10m	7'2" x 6'10"
Ensuite	2.20m x 1.55m	7'2" x 5'1"
Total Internal Area	84 sq m	904.1 sq ft
Patio & Balcony	5.10m x 1.55m	16'8" x 5'1"
Plot 63 Garden	12.20m x 2.00m	40'0" x 6'6"

KEY
WD Washer/Dryer
HIU Heat Interface Unit
W Wardrobe

PLOT

BLOCK C
58

2 BEDROOM



Living/Kitchen/Dining	7.10m x 3.75m	23'3" x 12'3"
Master Bedroom	3.50m x 3.25m	11'5" x 10'7"
Bedroom 2	4.15m x 2.85m	13'7" x 9'4"
Bathroom	2.20m x 2.10m	7'2" x 6'10"
Ensuite	2.20m x 1.55m	7'2" x 5'1"
Total Internal Area	74 sq m	796.5 sq ft
Garden	10.50m x 5.40m	34'5" x 17'8"
Balcony	7.50m x 1.15m	24'7" x 3'9"

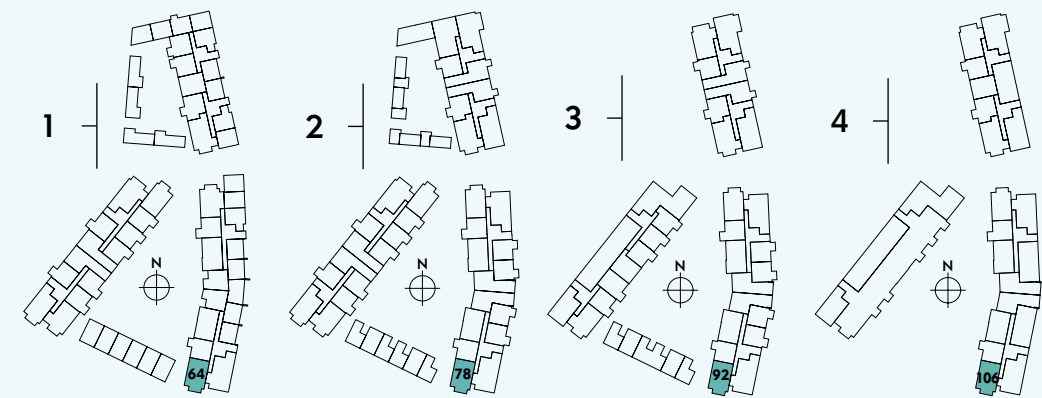
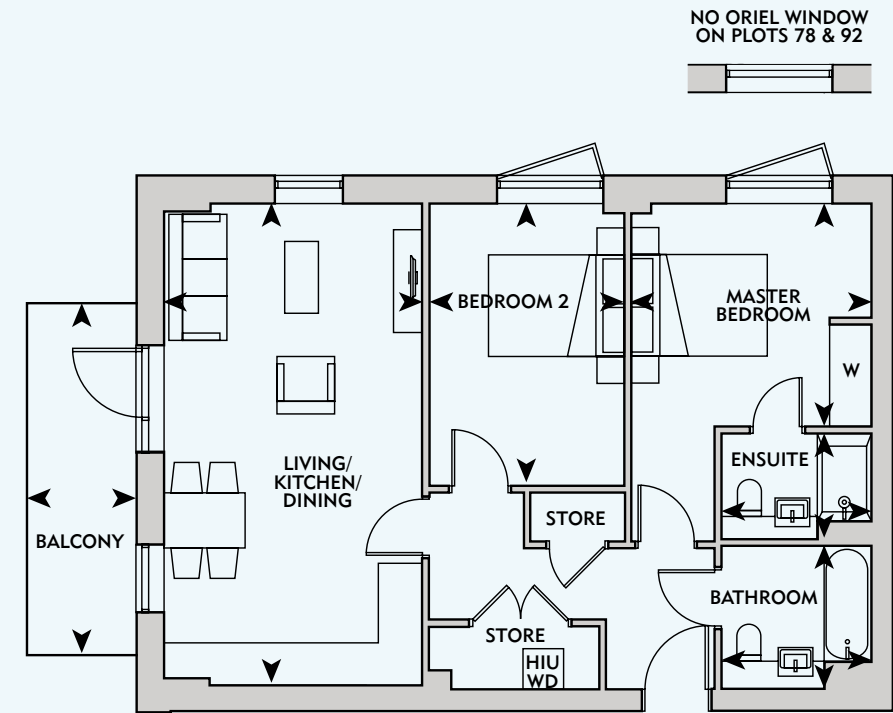
KEY

WD	Washer/Dryer
HIU	Heat Interface Unit
W	Wardrobe

PLOTS

BLOCK C
64, 78, 92, 106

2 BEDROOM



Living/Kitchen/Dining	7.10m x 3.75m	23'3" x 12'3"
Master Bedroom	3.50m x 3.25m	11'5" x 10'7"
Bedroom 2	4.15m x 2.85m	13'7" x 9'4"
Bathroom	2.20m x 2.10m	7'2" x 6'10"
Ensuite	2.20m x 1.55m	7'2" x 5'1"
Total Internal Area	74 sq m	796.5 sq ft
Balcony	5.10m x 1.55m	16'8" x 5'1"

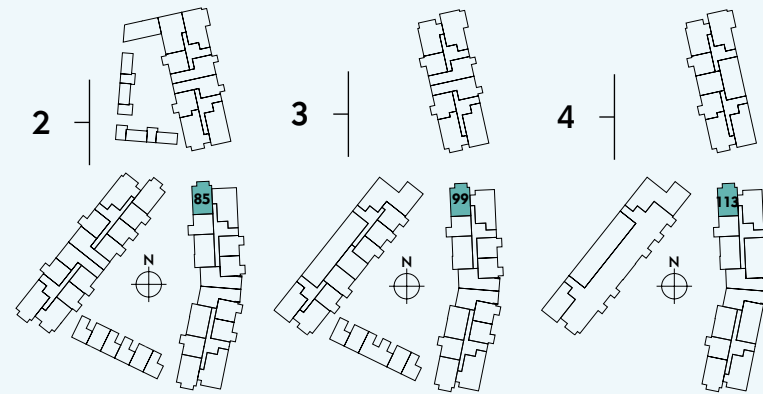
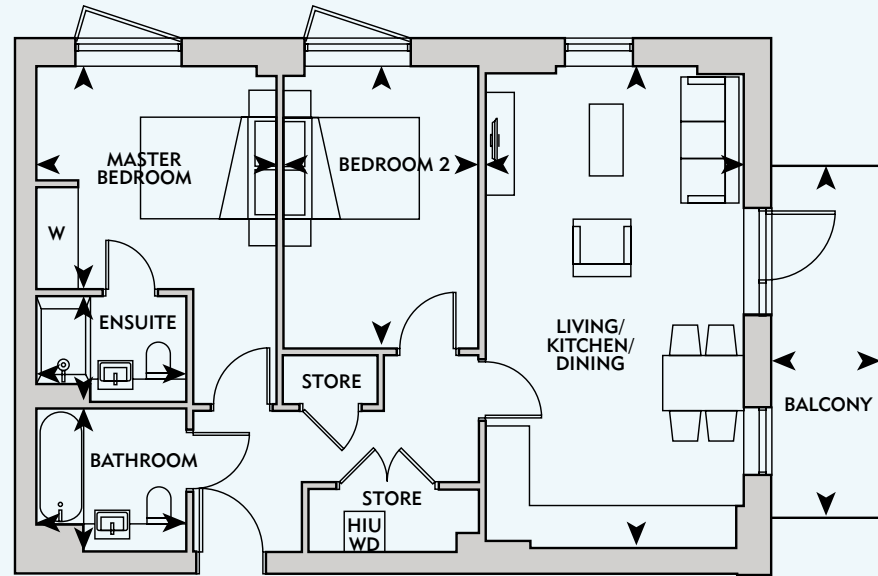
KEY

WD	Washer/Dryer
HIU	Heat Interface Unit
W	Wardrobe

PLOTS

BLOCK C
85, 99, 113

2 BEDROOM



Living/Kitchen/Dining	7.10m x 3.75m	23'3" x 12'3"
Master Bedroom	3.50m x 3.25m	11'5" x 10'7"
Bedroom 2	4.15m x 2.85m	13'7" x 9'4"
Bathroom	2.20m x 2.10m	7'2" x 6'10"
Ensuite	2.20m x 1.55m	7'2" x 5'1"
Total Internal Area	74 sq m	796.5 sq ft
Balcony	5.10m x 1.55m	16'8" x 5'1"

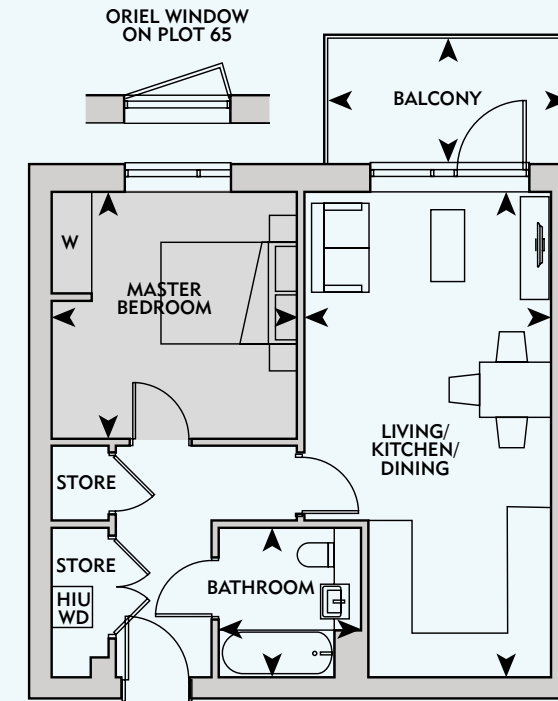
KEY

WD	Washer/Dryer
HIU	Heat Interface Unit
W	Wardrobe

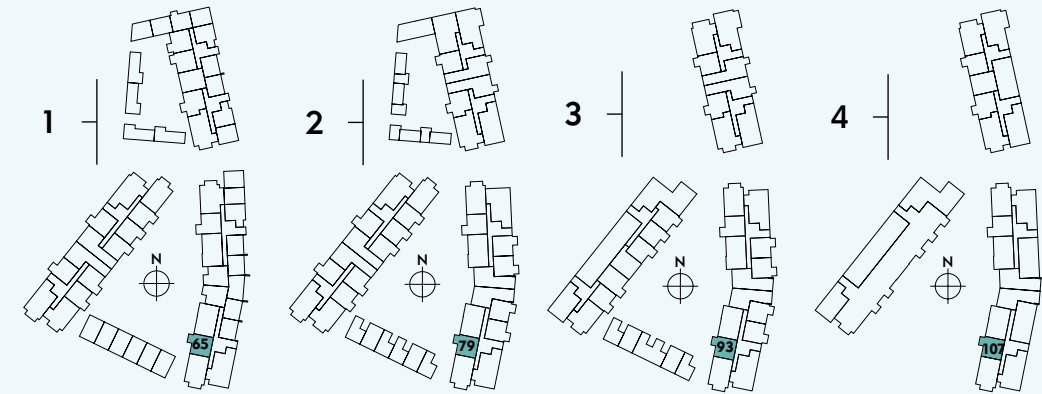
PLOTS

BLOCK C
65, 79, 93, 107

1 BEDROOM



Please note: Shaded area – reduced ceiling height = 2.48m



Living/Kitchen/Dining	7.10m x 3.55m	23'3" x 11'7"
Master Bedroom	3.60m x 3.60m	11'9" x 11'9"
Bathroom	2.20m x 2.10m	7'2" x 6'10"
Total Internal Area	52 sq m	559.7 sq ft
Balcony	3.50m x 1.85m	11'5" x 6'0"

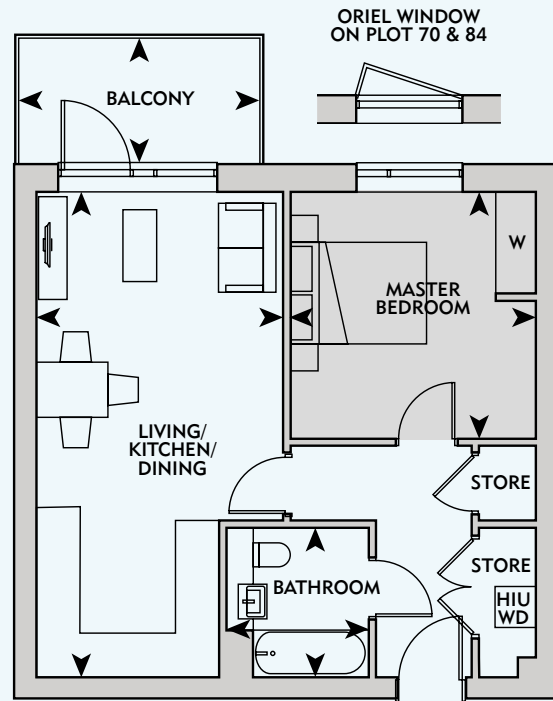
KEY

WD	Washer/Dryer
HIU	Heat Interface Unit
W	Wardrobe

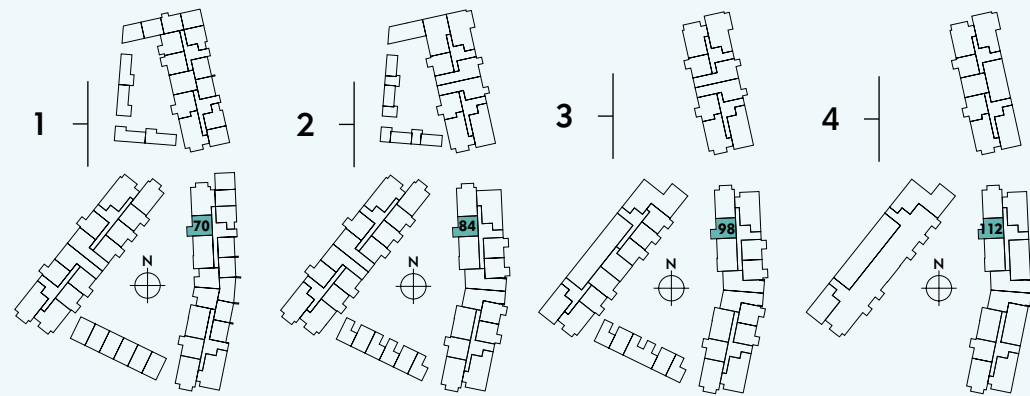
PLOTS

BLOCK C
70, 84, 98, 112

1 BEDROOM



Please note: Shaded area – reduced ceiling height = 2.48m



KEY

Living/Kitchen/Dining	7.10m x 3.55m	23'3" x 11'7"
Master Bedroom	3.60m x 3.60m	11'9" x 11'9"
Bathroom	2.20m x 2.10m	7'2" x 6'10"
Total Internal Area	52 sq m	559.7 sq ft
Balcony	3.50m x 1.85m	11'5" x 6'0"

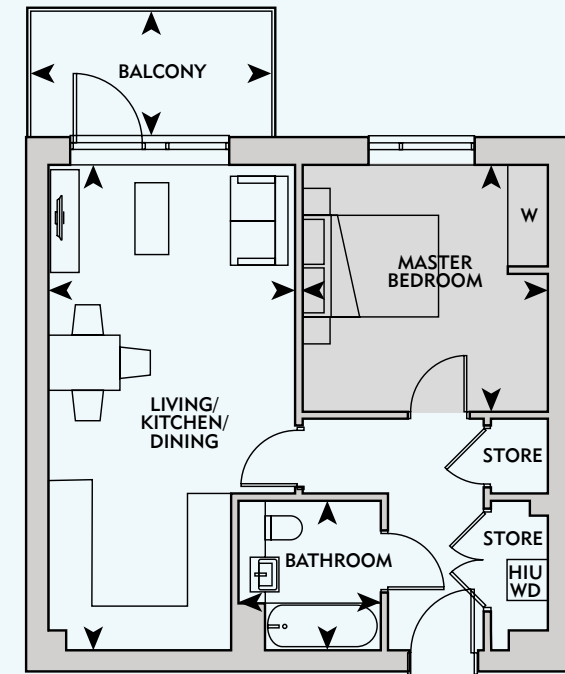
WD	Washer/Dryer
HIU	Heat Interface Unit
W	Wardrobe

PLOTS

BLOCK C
73, 76*

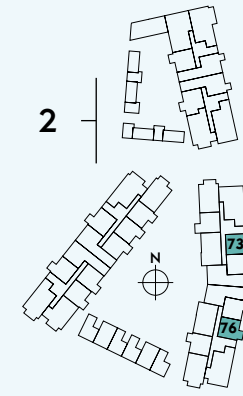
1 BEDROOM

*handed



DROP BEAM
IN PLOT 73

Please note: Shaded area – reduced ceiling height = 2.48m



KEY

Living/Kitchen/Dining	7.10m x 3.55m	23'3" x 11'7"
Master Bedroom	3.60m x 3.60m	11'9" x 11'9"
Bathroom	2.20m x 2.10m	7'2" x 6'10"
Total Internal Area	52 sq m	559.7 sq ft
Balcony	3.50m x 1.85m	11'5" x 6'0"

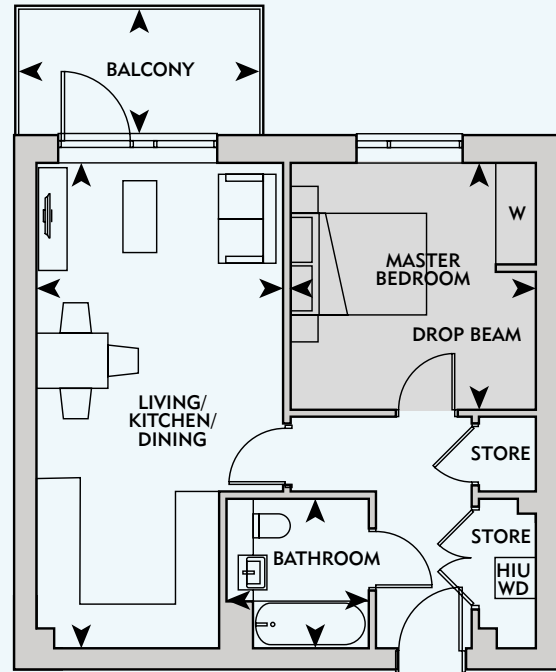
WD	Washer/Dryer
HIU	Heat Interface Unit
W	Wardrobe

PLOTS

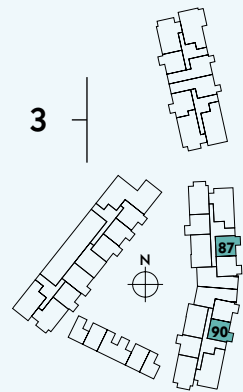
BLOCK C
87, 90*

1 BEDROOM

*handed



Please note: Shaded area – reduced ceiling height = 2.48m



Living/Kitchen/Dining	7.10m x 3.55m	23'3" x 11'7"
Master Bedroom	3.60m x 3.60m	11'9" x 11'9"
Bathroom	2.20m x 2.10m	7'2" x 6'10"
Total Internal Area	52 sq m	559.7 sq ft
Balcony	3.50m x 1.85m	11'5" x 6'0"

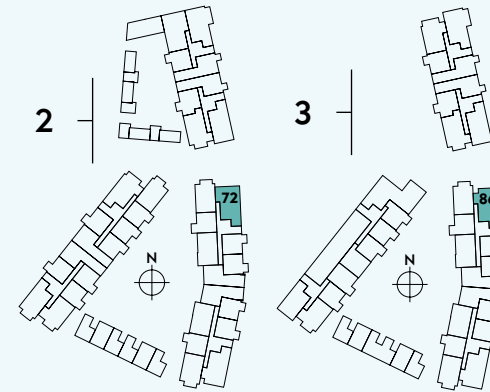
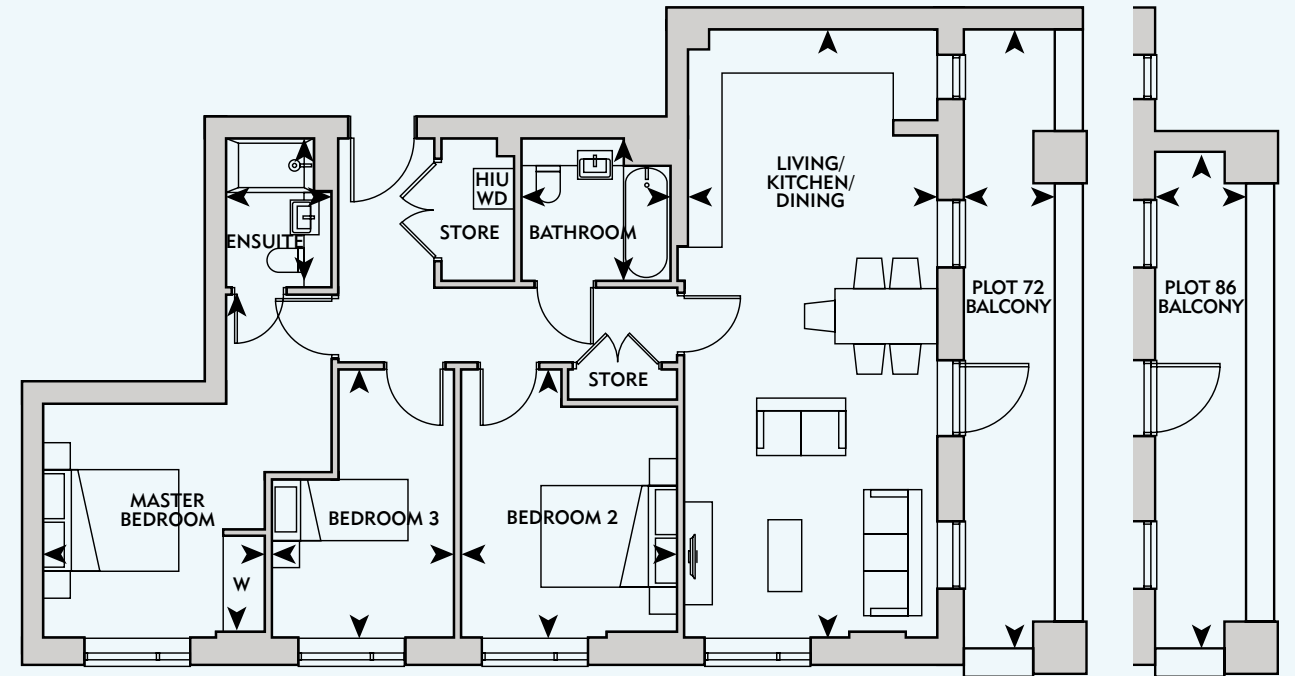
KEY

WD	Washer/Dryer
HIU	Heat Interface Unit
W	Wardrobe

PLOTS

BLOCK C
72, 86

3 BEDROOM



Living/Kitchen/Dining	9.00m x 3.70m	29'6" x 12'1"
Master Bedroom	3.40m x 3.25m	11'1" x 10'7"
Bedroom 2	3.90m x 2.65m	12'9" x 8'8"
Bedroom 3	3.30m x 3.15m	10'9" x 10'4"
Bathroom	2.20m x 2.10m	7'2" x 6'10"
Ensuite	2.20m x 1.55m	7'2" x 5'1"
Total Internal Area	92 sq m	990.2 sq ft
Plot 72 Balcony	9.10m x 1.45m	29'10" x 4'9"
Plot 86 Balcony	7.50m x 1.50m	24'7" x 4'11"

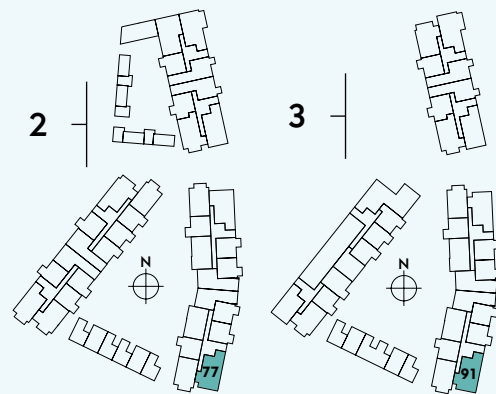
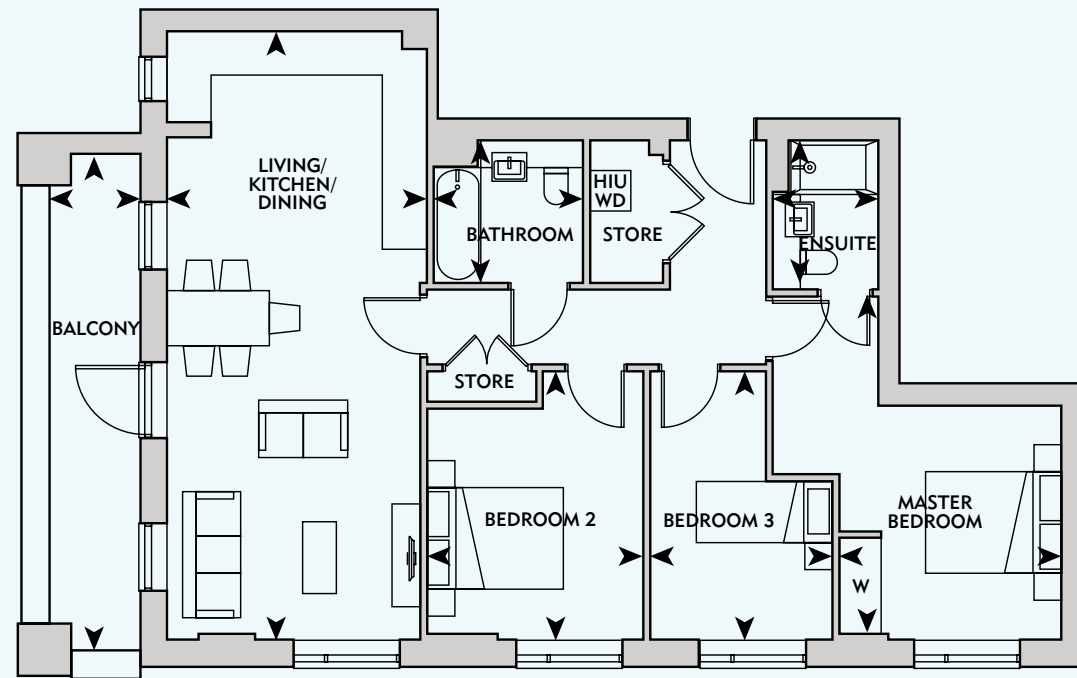
KEY

WD	Washer/Dryer
HIU	Heat Interface Unit
W	Wardrobe

PLOTS

BLOCK C
77, 91

3 BEDROOM



Living/Kitchen/Dining	9.00m x 3.70m	29'6" x 12'1"
Master Bedroom	3.40m x 3.25m	11'1" x 10'7"
Bedroom 2	3.90m x 2.65m	12'9" x 8'8"
Bedroom 3	3.30m x 3.15m	10'9" x 10'4"
Bathroom	2.20m x 2.10m	7'2" x 6'10"
Ensuite	2.20m x 1.55m	7'2" x 5'1"
Total Internal Area	92 sq m	990.2 sq ft
Balcony	7.50m x 1.50m	24'7" x 4'11"

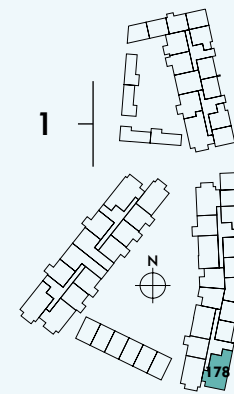
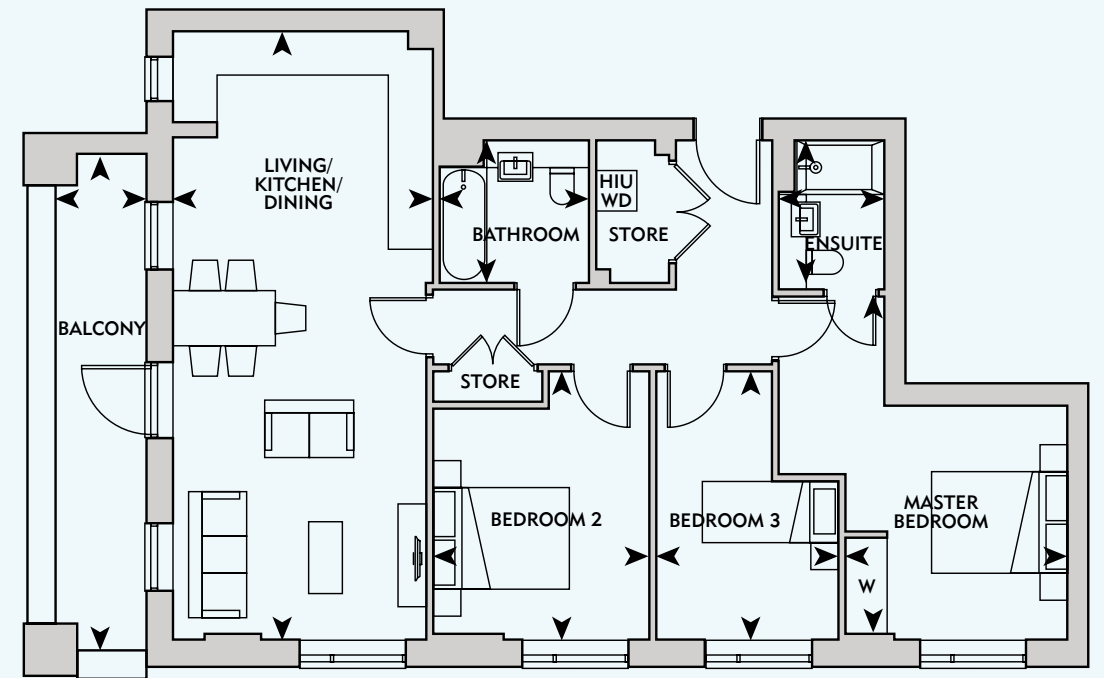
KEY

- WD** Washer/Dryer
- HIU** Heat Interface Unit
- W** Wardrobe

PLOT

BLOCK C
178

3 BEDROOM



Living/Kitchen/Dining	9.00m x 3.70m	29'6" x 12'1"
Master Bedroom	3.40m x 3.25m	11'1" x 10'7"
Bedroom 2	3.90m x 2.65m	12'9" x 8'8"
Bedroom 3	3.30m x 3.15m	10'9" x 10'4"
Bathroom	2.20m x 2.10m	7'2" x 6'10"
Ensuite	2.20m x 1.55m	7'2" x 5'1"
Total Internal Area	92 sq m	990.2 sq ft
Balcony	9.10m x 1.45m	29'10" x 4'9"

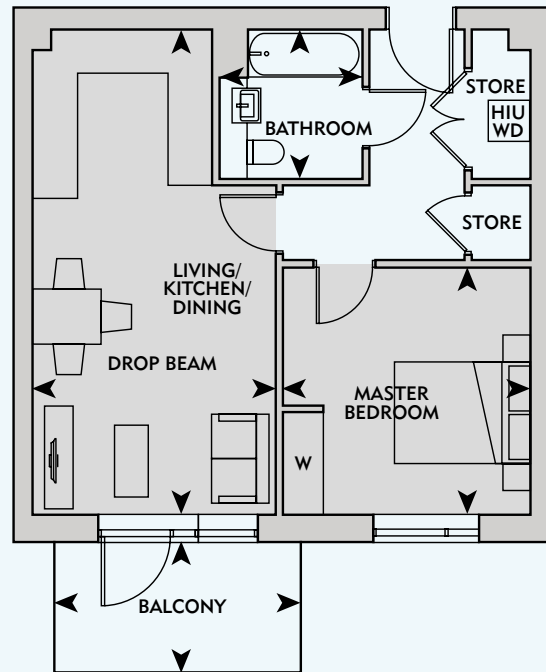
KEY

- WD** Washer/Dryer
- HIU** Heat Interface Unit
- W** Wardrobe

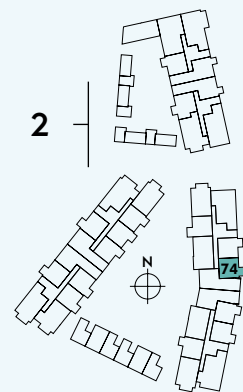
PLOT

BLOCK C
74

1 BEDROOM



Please note: Shaded area – reduced ceiling height = 2.48m



Living/Kitchen/Dining	7.10m x 3.55m	23'3" x 11'7"
Master Bedroom	3.60m x 3.60m	11'9" x 11'9"
Bathroom	2.20m x 2.10m	7'2" x 6'10"
Total Internal Area	52 sq m	559.7 sq ft
Balcony	3.50m x 1.80m	11'5" x 5'10"

KEY

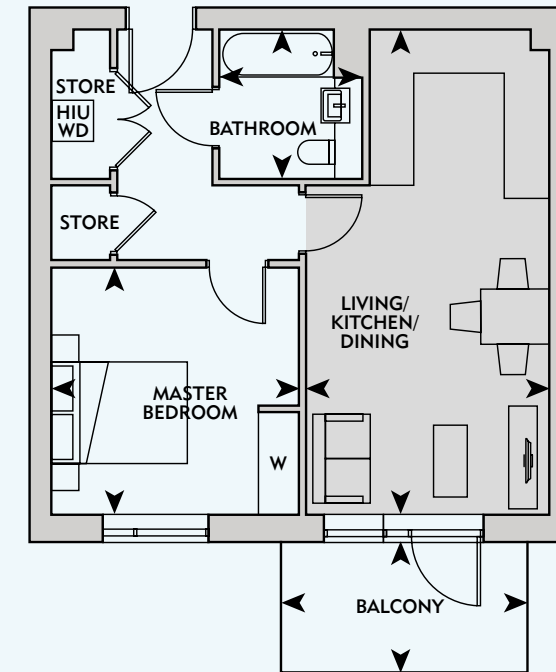
- WD** Washer/Dryer
- HIU** Heat Interface Unit
- W** Wardrobe

PLOTS

BLOCK C
75, 88*, 89

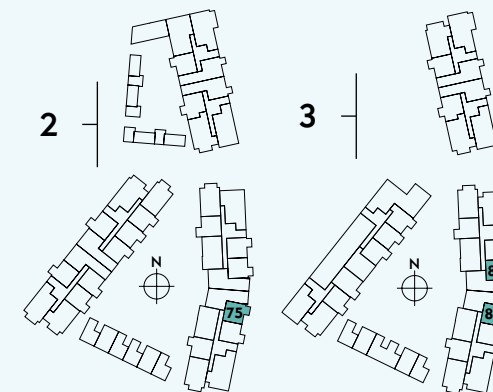
1 BEDROOM

*handed



DROP BEAM IN PLOTS 88 & 89

Please note: Shaded area – reduced ceiling height = 2.48m



Living/Kitchen/Dining	7.10m x 3.55m	23'3" x 11'7"
Master Bedroom	3.60m x 3.60m	11'9" x 11'9"
Bathroom	2.20m x 2.10m	7'2" x 6'10"
Total Internal Area	52 sq m	559.7 sq ft
Balcony	3.50m x 1.80m	11'5" x 5'10"

KEY

- WD** Washer/Dryer
- HIU** Heat Interface Unit
- W** Wardrobe

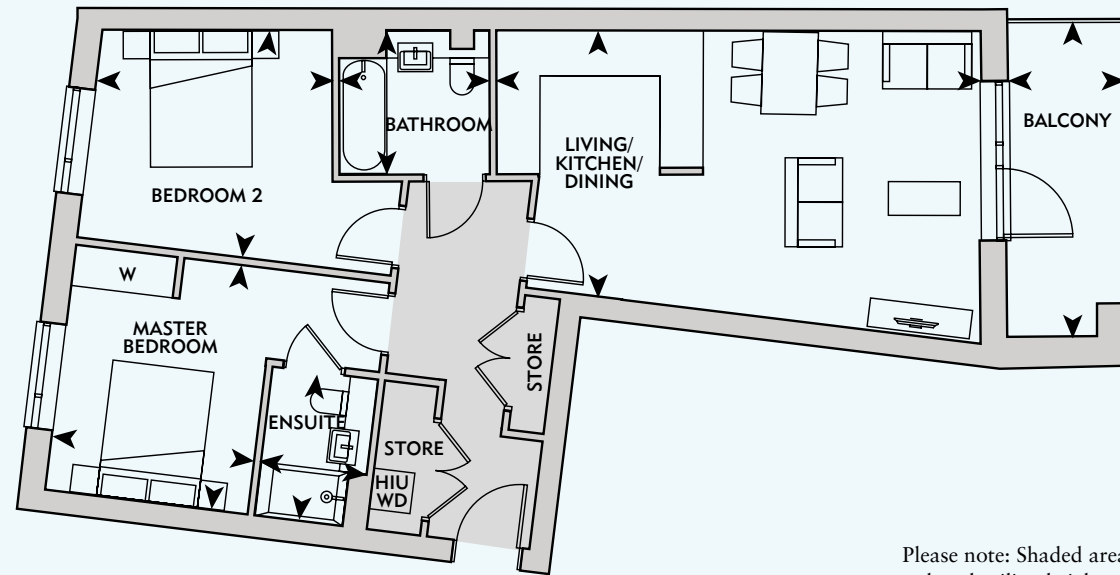
PLOTS

BLOCK C

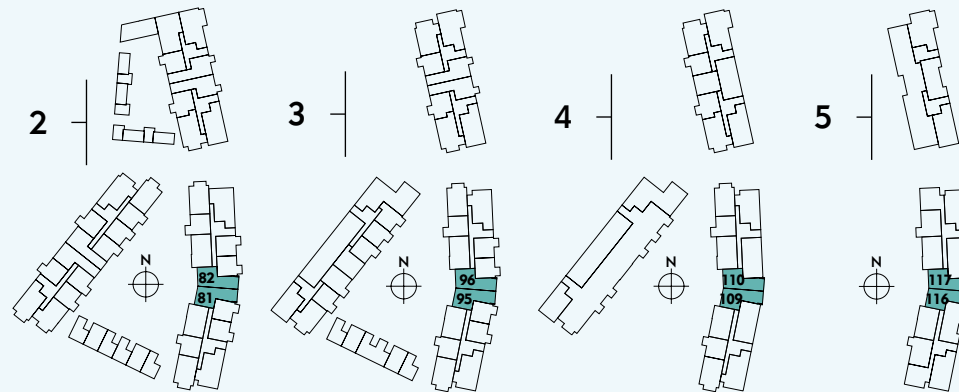
81, 82*, 95, 96*, 109, 110*, 116, 117*

2 BEDROOM

*handed



Please note: Shaded area – reduced ceiling height = 2.48m



KEY

Living/Kitchen/Dining	7.10m x 4.50m	23'3" x 14'9"
Master Bedroom	3.40m x 3.10m	11'1" x 10'2"
Bedroom 2	3.65m x 3.00m	11'11" x 9'10"
Bathroom	2.20m x 2.10m	7'2" x 6'10"
Ensuite	2.20m x 1.55m	7'2" x 5'1"
Total Internal Area	77 sq m	828.8 sq ft
Balcony	4.55m x 1.70m	14'11" x 5'6"

WD	Washer/Dryer
HIU	Heat Interface Unit
W	Wardrobe

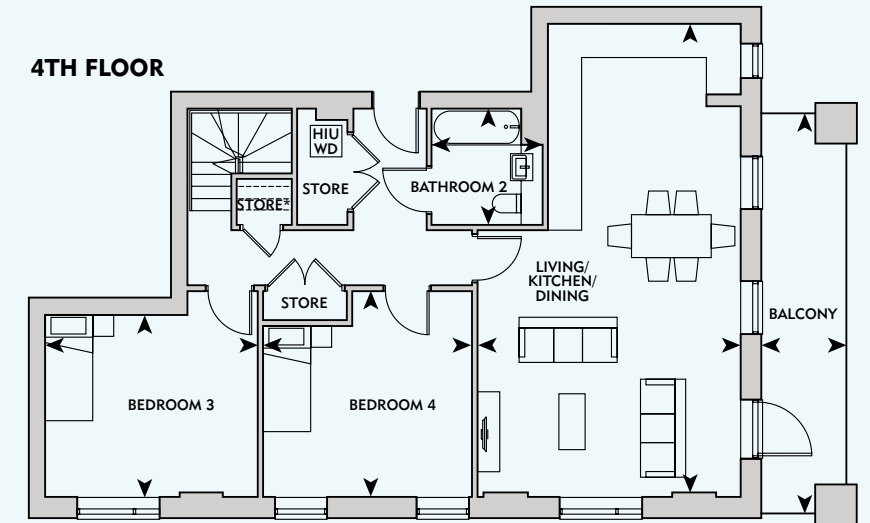
PLOTS

BLOCK C

100, 105*

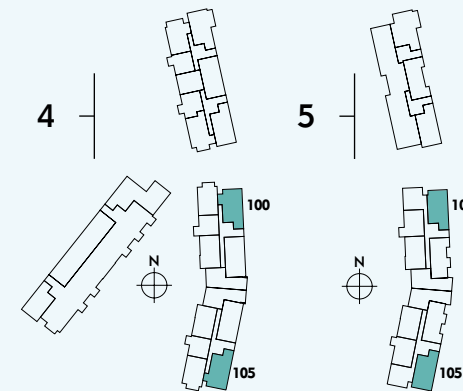
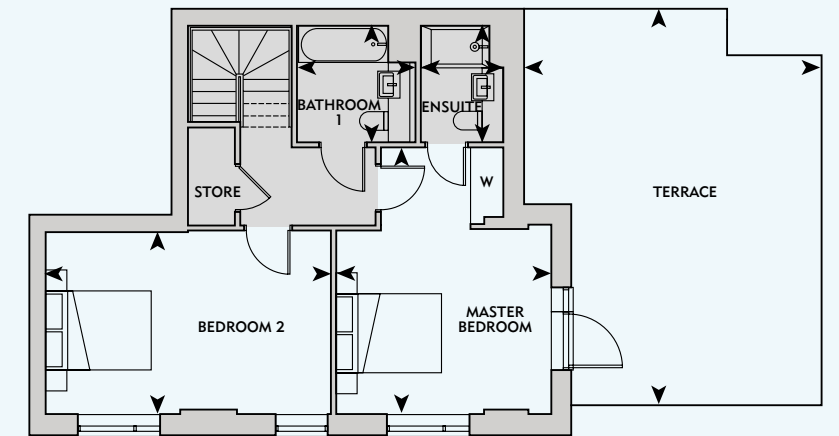
4 BEDROOM

*handed



Please note: Shaded area – reduced ceiling height = 2.4m

5TH FLOOR



KEY

Living/Kitchen/Dining	8.95m x 4.90m	29'4" x 16'0"
Master Bedroom	5.00m x 4.00m	16'4" x 13'1"
Bedroom 2	5.35m x 4.35m	17'6" x 14'3"
Bedroom 3	3.90m x 3.90m	12'9" x 12'9"
Bedroom 4	3.95m x 3.45m	12'11" x 11'3"
Bathroom 1	2.20m x 2.10m	7'2" x 6'10"
Bathroom 2	2.20m x 2.10m	7'2" x 6'10"
Ensuite	2.20m x 1.55m	7'2" x 5'1"
Total Internal Area	148 sq m	1593.0 sq ft
Balcony	7.45m x 1.54m	24'5" x 5'0"
Terrace	7.40m x 5.60m	24'3" x 18'4"

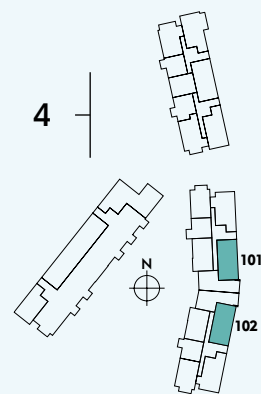
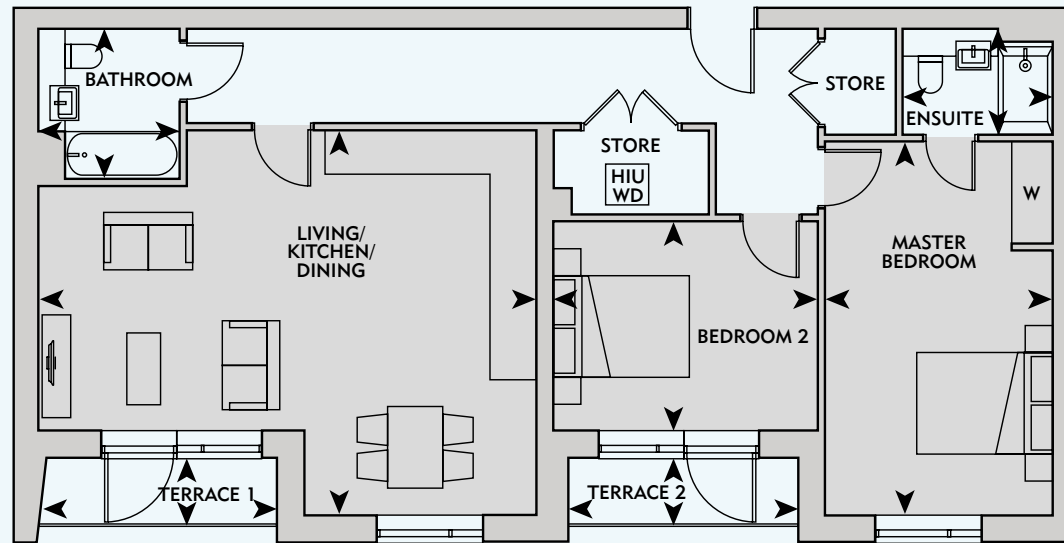
WD	Washer/Dryer
HIU	Heat Interface Unit
W	Wardrobe
*	Under-Stairs Cupboard

PLOTS

BLOCK C
101, 102*

2 BEDROOM

*handed



Please note: Shaded area – reduced ceiling height = 2.48m

KEY

- WD** Washer/Dryer
- HIU** Heat Interface Unit
- W** Wardrobe

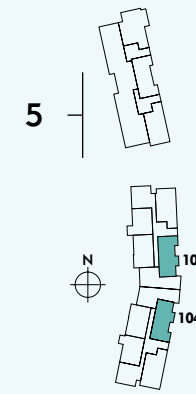
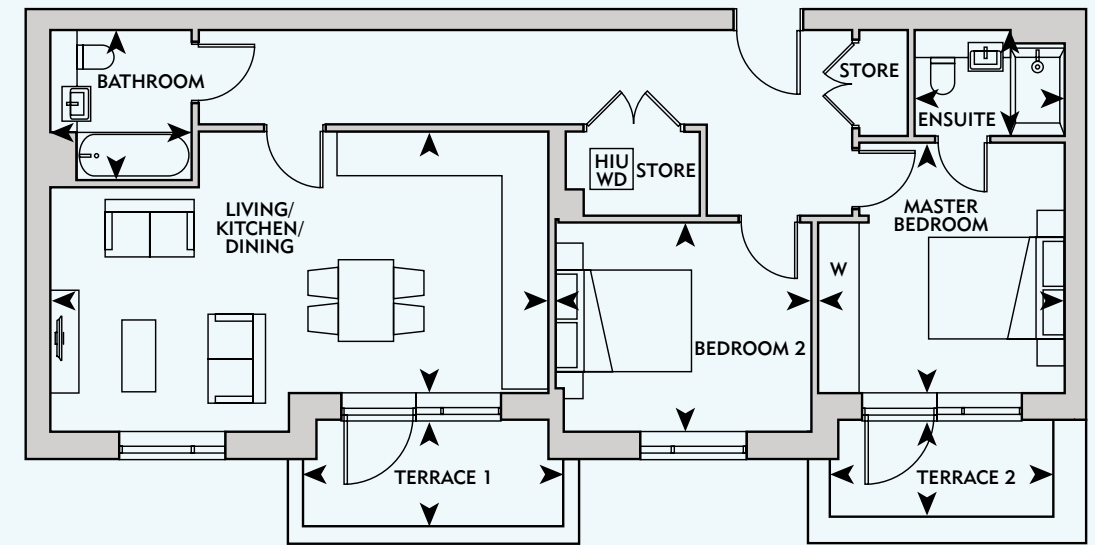
Living/Kitchen/Dining	7.30m x 5.60m	23'11" x 18'4"
Master Bedroom	5.50m x 3.30m	18'0" x 10'9"
Bedroom 2	3.85m x 3.00m	12'7" x 9'10"
Bathroom	2.20m x 2.10m	7'2" x 6'10"
Ensuite	2.20m x 1.55m	7'2" x 5'1"
Total Internal Area	96 sq m	1033.3 sq ft
Terrace 1	3.35m x 1.00m	10'11" x 3'3"
Terrace 2	3.35m x 1.55m	10'11" x 5'1"

PLOTS

BLOCK C
103, 104*

2 BEDROOM

*handed



KEY

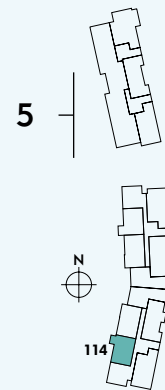
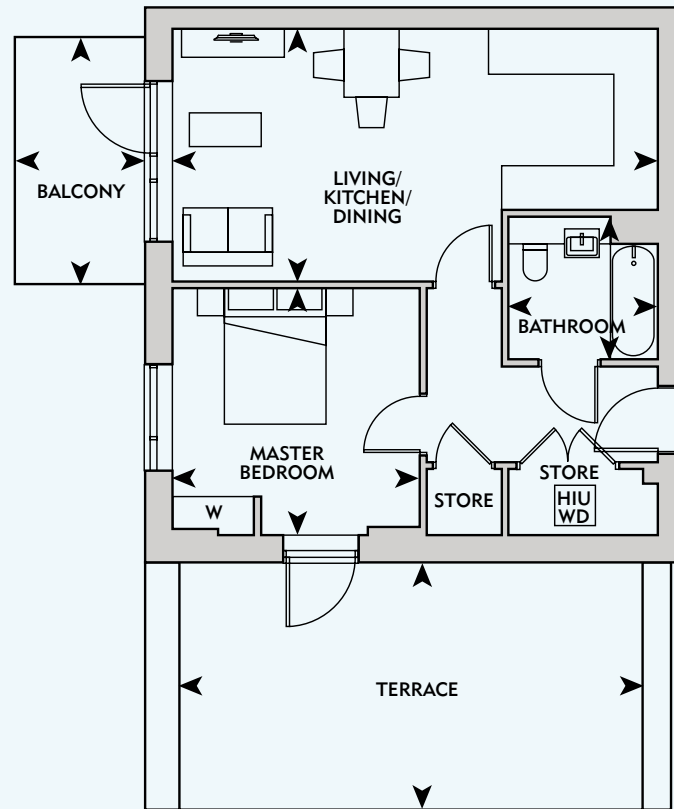
- WD** Washer/Dryer
- HIU** Heat Interface Unit
- W** Wardrobe

Living/Kitchen/Dining	7.30m x 4.40m	23'11" x 14'5"
Master Bedroom	3.80m x 3.55m	12'5" x 11'7"
Bedroom 2	3.75m x 3.10m	12'3" x 10'2"
Bathroom	2.20m x 2.10m	7'2" x 6'10"
Ensuite	2.20m x 1.55m	7'2" x 5'1"
Total Internal Area	84 sq m	904.1 sq ft
Terrace 1	3.60m x 1.40m	11'9" x 4'7"
Terrace 2	3.30m x 1.40m	10'9" x 4'7"

PLOT

BLOCK C
114

1 BEDROOM



Living/Kitchen/Dining	7.10m x 3.55m	23'3" x 11'7"
Master Bedroom	3.60m x 3.60m	11'9" x 11'9"
Bathroom	2.20m x 2.10m	7'2" x 6'10"
Total Internal Area	52 sq m	559.7 sq ft
Balcony	3.50m x 1.85m	11'5" x 6'0"
Terrace	7.30m x 3.60m	23'11" x 11'9"

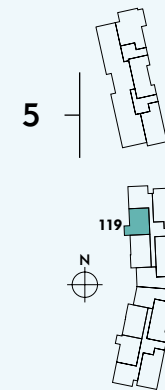
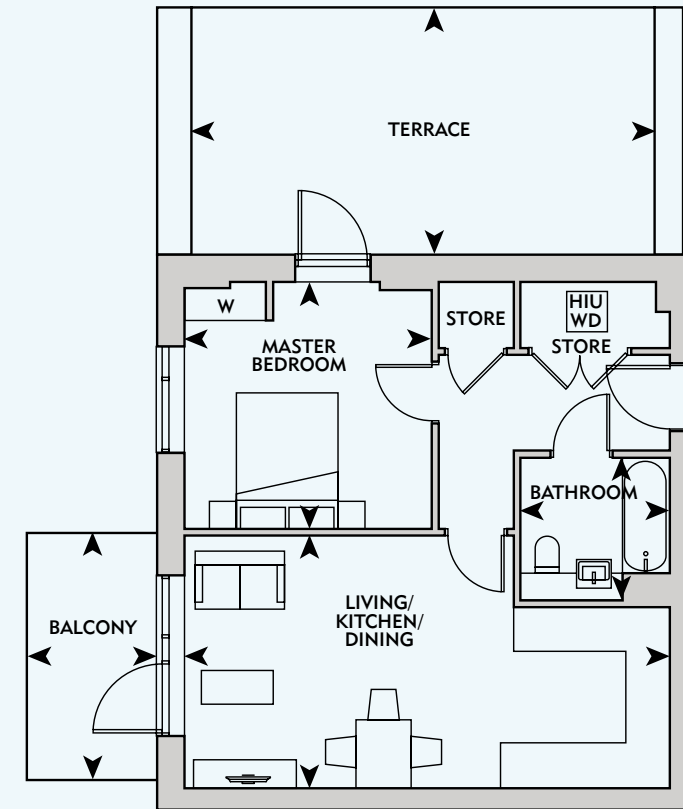
KEY

- WD** Washer/Dryer
- HIU** Heat Interface Unit
- W** Wardrobe

PLOT

BLOCK C
119

1 BEDROOM



Living/Kitchen/Dining	7.10m x 3.55m	23'3" x 11'7"
Master Bedroom	3.60m x 3.60m	11'9" x 11'9"
Bathroom	2.20m x 2.10m	7'2" x 6'10"
Total Internal Area	52 sq m	559.7 sq ft
Balcony	3.50m x 1.85m	11'5" x 6'0"
Terrace	7.30m x 3.60m	23'11" x 11'9"

KEY

- WD** Washer/Dryer
- HIU** Heat Interface Unit
- W** Wardrobe

SPECIFICATION



KITCHEN

- Contemporary high gloss units from Symphony, with soft-close hinges and integrated eco-recycling bin
- Caesarstone worktop in Snow with matching upstand
- LED strip lighting to underside of wall units in warm white
- Blanco under-mounted stainless steel sink with coordinating tap
- Integrated single oven
- Ceramic hob with glass splashback in Chalk White where applicable
- Integrated canopy hood or a ceiling extractor (above kitchen island)
- Integrated fridge/freezer and dishwasher

BEDROOM(S)

- Carpets to bedroom(s)
- Fitted wardrobes to master bedrooms

BATHROOM/ENSUITE

- Contemporary Ideal Standard bathroom suite with Hansgrohe taps and shower
- Single square bath screen over bath
- Shower enclosure with sliding door to en suites
- Large format wall tiles in Rust White with coordinating feature tiles above bath. Floor tiles in Rust Steel
- Wood effect vanity tops in Dark Mountain Oak
- Large mirror to fully fit recess detail to bathroom and ensuite
- Chrome heated towel rail
- Shaver socket

INTERIORS

- Automatic sprinkler system
- White internal doors
- Free-standing washer/dryer in store cupboard
- Walls and ceilings decorated with white matt emulsion
- Amtico flooring to entrance hall, kitchen and living/dining areas
- Underfloor heating
- TV, phone and data points to selected locations
- Wiring for customer's own broadband and Sky Q connections (subscriptions required)

GENERAL – APARTMENTS

- PAS 24 apartment entrance doors
- Audio visual intercom system
- Lift access to all floors
- 10 year NHBC warranty
- 999 year lease
- A service charge will be payable for the maintenance of the shared facilities and communal areas

Show home images at Remix for indicative purposes only.

The information in this document is indicative and is intended to act as a guide only as to the finished product. Accordingly, due to the Hyde New Homes' policy of continuous improvement, the finished product may vary from the information provided. These particulars should not be relied upon as accurately describing any of the specific matters described by any order under The Consumer Protection From Unfair Trading Regulations 2008. This information does not constitute a contract or warranty. The dimensions provided on plans are subject to variations and are not intended to be used for carpet sizes, appliance sizes or items of furniture. We are unable to accommodate any individual changes, additions or amendments to the specification, layout or plans to any individual home. Please note that it may not be possible to obtain the products as referred to in the specification; in such cases a similar alternative will be provided. We reserve the right to make these changes as required.



HELIX PARKING PLAN

Parking plan indicative.
To be used for parking indication purposes only.

Allocated underground parking is available, please see your sales advisor for more information.



Hyde New Homes is the award-winning affordable home ownership part of the Hyde Group, a leading G15 developer of homes for all needs and incomes, providing homes and services to over 95,000 customers across London and the South East.

The 30-strong Hyde New Homes team sits within Business Development and provides expertise in sales and marketing.

Hyde plans to develop 7,500 homes over the next five years and is investigating ways to build further homes. As a not-for-profit business, surplus is invested to build more affordable homes.

Hyde's significant skills and experience are reflected in its approach to both new build and large-scale regeneration, harnessing a multi-disciplined approach where all relevant stakeholders input into each scheme at an early stage to ensure the product is suited to its target audience and commercially viable.

Homes are generously-sized, striking a balance between style and functional design, appealing to a wide range of home buyers. Quality finishes, fittings and long-lasting materials are used and current sustainability standards employed, using latest heating and insulation technology to reduce fuel bills and cut emissions.

The focus is on customer satisfaction, innovative product, award-winning design and locations, making Hyde's new homes attractive to buyers and investors alike.



SPRING



BERMONDSEY SPA, LONDON

AWARDS WON FOR PREVIOUS STONEBRIDGE PHASES:

2019 In-house Awards:



Gold Award – For Customer Satisfaction

2018 National Housing Awards:



Winner – Best Customer Care

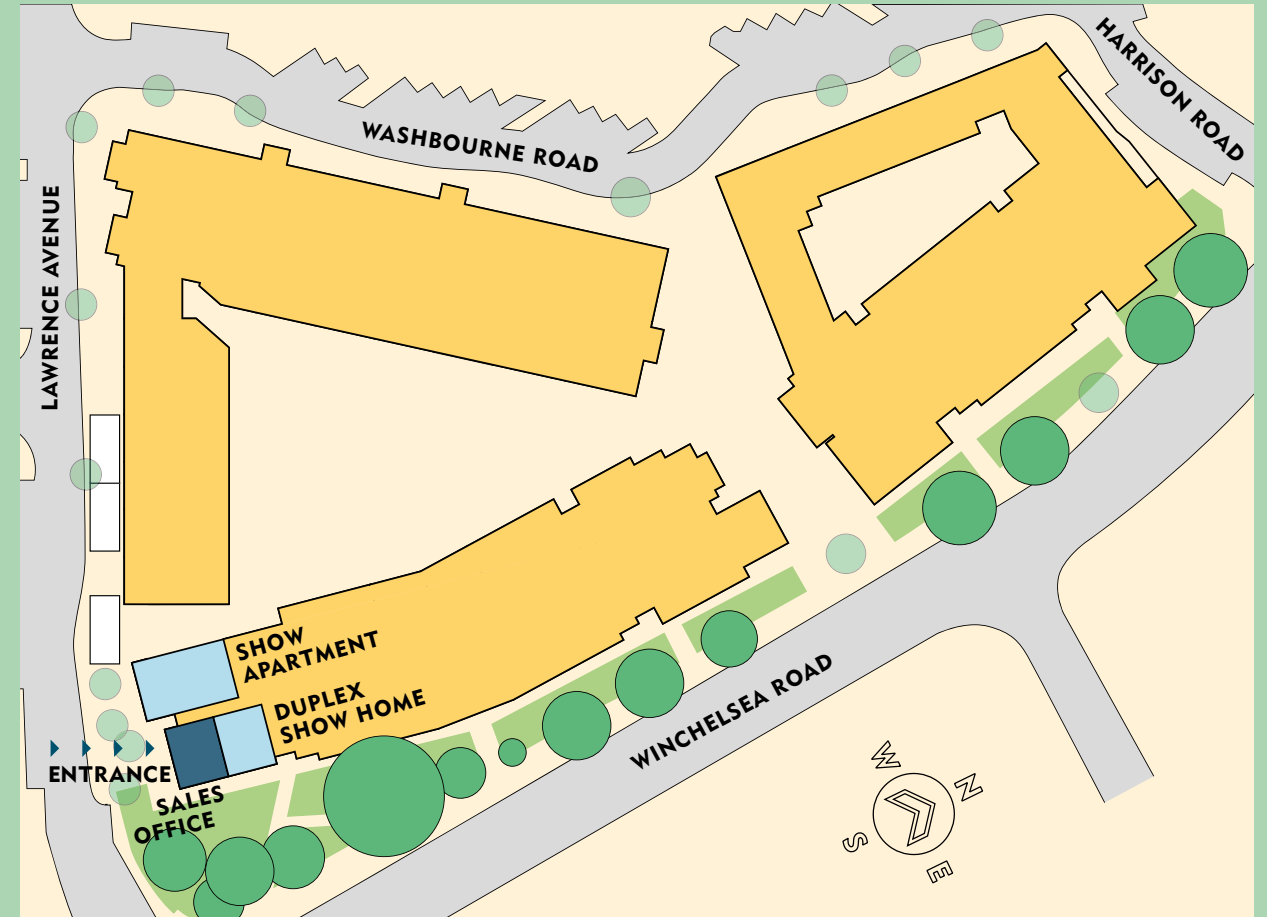


Highly Commended – Best Marketing Campaign (shared ownership development)



Highly Commended – Best Marketing Campaign (mixed tenure development)

SALES & MARKETING SUITE



HELIX SALES & MARKETING

Lawrence Avenue
London NW10 8EW



The information in this document is indicative and is intended to act as a guide only as to the finished product. Accordingly, due to the Hyde New Homes policy of continuous improvement, the finished product may vary from the information provided. These particulars should not be relied upon as accurately describing any of the specific matters described by any order under Consumer Protection from Unfair Trading Regulations 2008. This information does not constitute a contract or warranty. The dimensions provided on plans are subject to variations and are not intended to be used for carpet sizes, appliance sizes or items of furniture. Specifications are subject to change.

ABOUT SHARED OWNERSHIP

Shared Ownership is a scheme which has been specifically designed to help those who are unable to afford the cost of buying a property on the open market.

It works by enabling you to purchase a share in your new home, and pay a subsidised rent on the part you don't own to Hyde New Homes.

You will own an equity share in your new home. A lease is a legal document between the freeholder or landlord and the purchaser and is binding on both sides and since you will own a lease you will be a 'leaseholder'. The lease covers the responsibilities including maintenance, rent setting, purchasing more equity, selling and insurance. You will have the same rights and responsibilities as a full owner occupier.

You can also watch Your 'Guide to Shared Ownership' video on our website: www.hydenewhomes.co.uk

Please speak to a member of the dedicated sales team for the exact eligibility criteria at Remix. Our experienced staff understand the stressful experience acquiring a home can bring and will provide customers advice on enquiries, whilst guiding them every step of the way to make this 'most important decision'.

PLOT LOCATOR

KEY

-  Shared Ownership
-  Bin Store
-  Cycle Storage
-  Plant
-  Parking
-  Lifts & Stairs



HYDENEWHOMES.CO.UK
0808 301 9798

A development by



Sales Agent

