

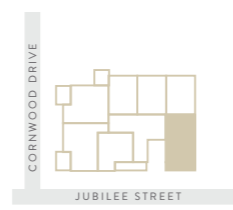


FLOOR PLANS

Apartment 0.7*
102 sqm / 1,098 sqft
2 Bedrooms
3 Bathrooms
1 Patio, 1 Terrace

Ground & First Floor

- 5
- 4
- 3
- 2
- 1
- G



| | |
|----------------|-------------|
| Lounge/Kitchen | 6.6 × 4.7 m |
| Bedroom 1 | 2.9 × 5.8 m |
| Bedroom 2 | 2.7 × 4.6 m |
| Home office | 5.0 × 1.5 m |
| Patio | 4.6 sqm |
| Terrace | 8.6 sqm |

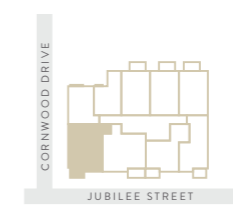
| | |
|--------------|----------------|
| Total | 102 sqm |
| | 1,098 sqft |



Apartment 2.2
64.5 sqm / 694 sqft
2 Bedrooms
1 Bathroom
1 Balcony

Second Floor

- 5
- 4
- 3
- 2
- 1
- G



| | |
|----------------|-------------|
| Lounge/Kitchen | 6.7 × 4.7 m |
| Bedroom 1 | 3.5 × 3.5 m |
| Bedroom 2 | 3.5 × 2.3 m |
| Terrace | 6.3 sqm |

| | |
|--------------|-----------------|
| Total | 64.5 sqm |
| | 694 sqft |



* This unit will have secondary glazing

All measurements are approximate and are taken at maximum widths and lengths of rooms. Plans are drawn to scale at a design phase and may vary during build. Kitchen and wardrobe sizes and layouts may differ to those shown. Furniture layouts are indicative only (where they appear). All total sqft and sqm are gross measurements. Window styles and positions may vary. Floorplans are not to scale.

All measurements are approximate and are taken at maximum widths and lengths of rooms. Plans are drawn to scale at a design phase and may vary during build. Kitchen and wardrobe sizes and layouts may differ to those shown. Furniture layouts are indicative only (where they appear). All total sqft and sqm are gross measurements. Window styles and positions may vary. Floorplans are not to scale.

Studio 2.3

39 sqm / 420 sqft

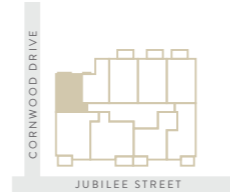
1 Bedroom

1 Bathroom

1 Juliet Balcony

Second Floor

- 5
- 4
- 3
- 2
- 1
- G



| | |
|----------------|-------------|
| Lounge/Kitchen | 7.4 × 4.9 m |
| Bedroom 1 | 2.9 × 2.7 m |

| | |
|--------------|---------------|
| Total | 39 sqm |
| | 420 sqft |



Studio 2.4

38.4 sqm / 413 sqft

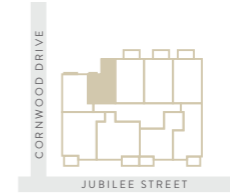
1 Bedroom

1 Bathroom

1 Juliet Balcony

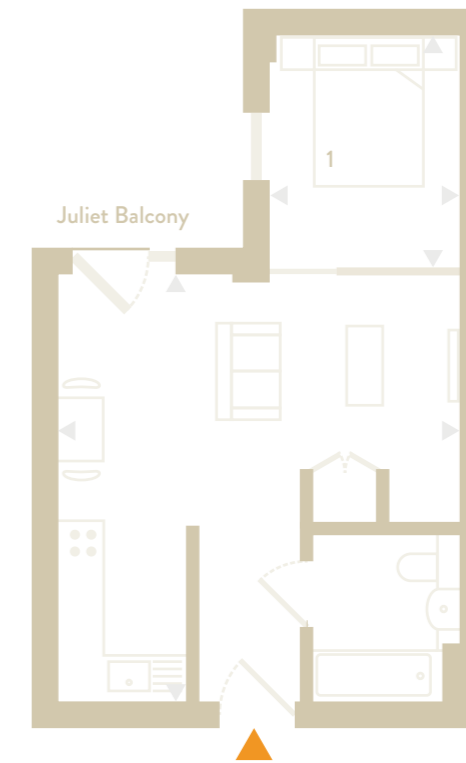
Second Floor

- 5
- 4
- 3
- 2
- 1
- G



| | |
|----------------|-------------|
| Lounge/Kitchen | 5.4 × 5.7 m |
| Bedroom 1 | 3.0 × 2.5 m |

| | |
|--------------|-----------------|
| Total | 38.4 sqm |
| | 413 sqft |



Apartment 2.5

50 sqm / 538 sqft

1 Bedroom

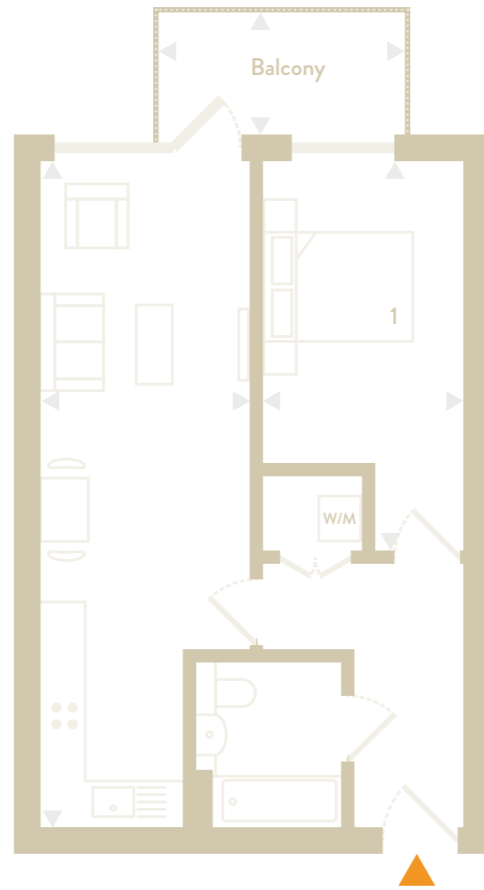
1 Bathroom

1 Balcony

Second Floor



| | |
|----------------|---------------|
| Lounge/Kitchen | 8.9 × 2.9 m |
| Bedroom 1 | 5.1 × 2.7 m |
| Balcony | 5.7 sqm |
| Total | 50 sqm |
| | 538 sqft |



Apartment 2.6

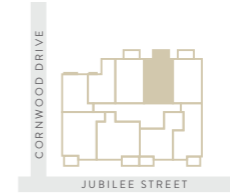
50 sqm / 538 sqft

1 Bedroom

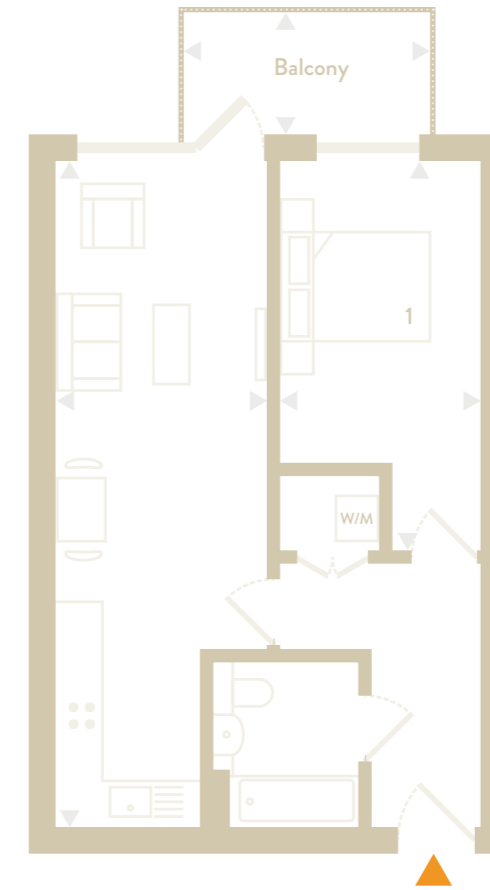
1 Bathroom

1 Balcony

Second Floor



| | |
|----------------|---------------|
| Lounge/Kitchen | 8.9 × 2.9 m |
| Bedroom 1 | 5.1 × 2.7 m |
| Balcony | 5.7 sqm |
| Total | 50 sqm |
| | 538 sqft |



Apartment 2.8

50 sqm / 538 sqft

1 Bedroom
1 Bathroom
1 Balcony

Second Floor

5
4
3
2
1
G



| | |
|----------------|---------------|
| Lounge/Kitchen | 8.3 × 2.8 m |
| Bedroom 1 | 4.5 × 2.6 m |
| Balcony | 5 sqm |
| Total | 50 sqm |
| | 538 sqft |



Apartment 2.9

50.6 sqm / 545 sqft

1 Bedroom
1 Bathroom
1 Balcony

Second Floor

5
4
3
2
1
G



| | |
|----------------|-----------------|
| Lounge/Kitchen | 6.1 × 4.9 m |
| Bedroom 1 | 4.7 × 2.5 m |
| Balcony | 5.2 sqm |
| Total | 50.6 sqm |
| | 545 sqft |



Apartment 3.2

64.5 SQM / 694 SQFT

2 Bedrooms
1 Bathroom
1 Balcony

Third Floor

- 5
- 4
- 3
- 2
- 1
- G



| | |
|----------------|-----------------|
| Lounge/Kitchen | 6.7 × 4.7 m |
| Bedroom 1 | 3.5 × 3.5 m |
| Bedroom 2 | 3.5 × 2.3 m |
| Terrace | 6.3 sqm |
| Total | 64.5 sqm |
| | 694 sqft |



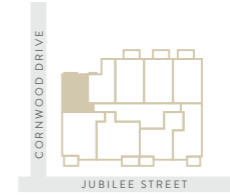
Studio 3.3

39 SQM / 420 SQFT

1 Bedroom
1 Bathroom
1 Juliet Balcony

Third Floor

- 5
- 4
- 3
- 2
- 1
- G



| | |
|----------------|---------------|
| Lounge/Kitchen | 7.4 × 4.9 m |
| Bedroom 1 | 2.9 × 2.7 m |
| Total | 39 sqm |
| | 420 sqft |



Studio 3.4

38.4 SQM / 413 SQFT

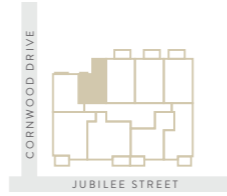
1 Bedroom

1 Bathroom

1 Juliet Balcony

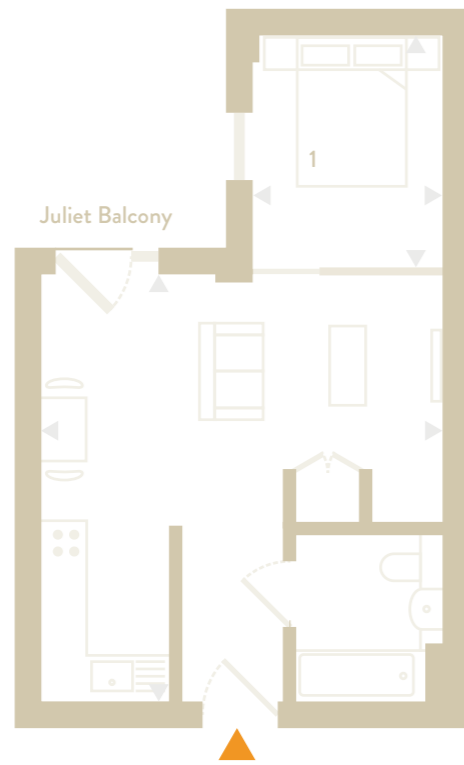
Third Floor

- 5
- 4
- 3
- 2
- 1
- G



| | |
|----------------|-------------|
| Lounge/Kitchen | 5.4 × 5.7 m |
| Bedroom 1 | 3.0 × 2.5 m |

| | |
|--------------|-----------------|
| Total | 38.4 sqm |
| | 413 sqft |



Apartment 3.5

50 SQM / 538 SQFT

1 Bedroom

1 Bathroom

1 Balcony

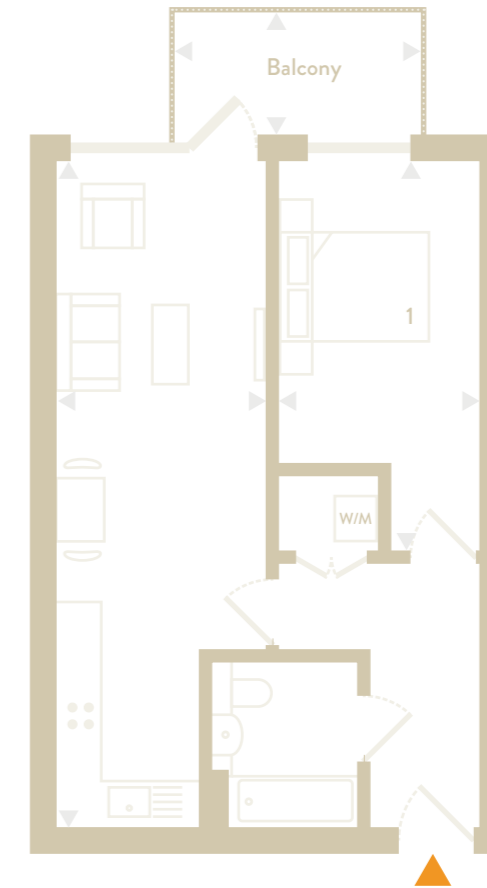
Third Floor

- 5
- 4
- 3
- 2
- 1
- G



| | |
|----------------|-------------|
| Lounge/Kitchen | 8.9 × 2.9 m |
| Bedroom 1 | 5.1 × 2.7 m |
| Balcony | 5.7 sqm |

| | |
|--------------|---------------|
| Total | 50 sqm |
| | 538 sqft |



Apartment 3.6

50 sqm / 538 sqft

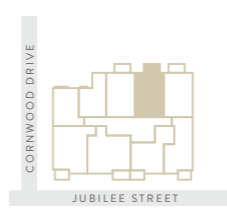
1 Bedroom

1 Bathroom

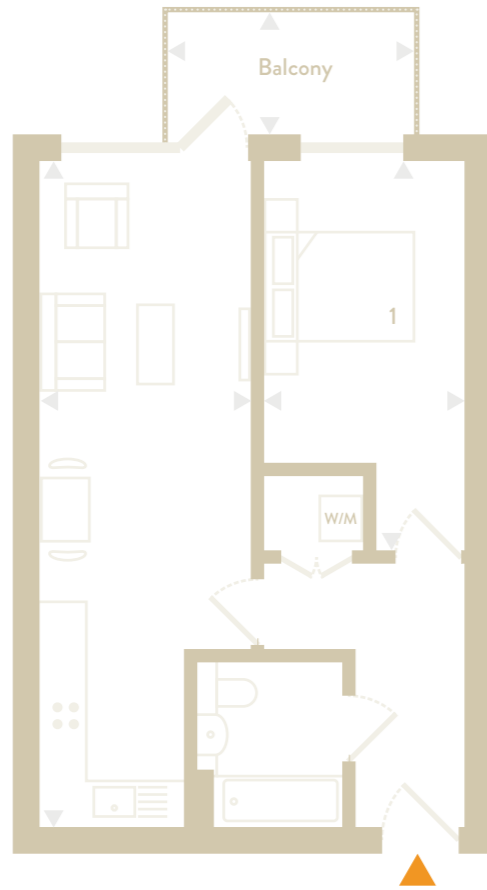
1 Balcony

Third Floor

- 5
- 4
- 3
- 2
- 1
- G



| | |
|----------------|---------------|
| Lounge/Kitchen | 8.9 × 2.9 m |
| Bedroom 1 | 8.9 × 2.10 m |
| Balcony | 5.7 sqm |
| Total | 50 sqm |
| | 538 sqft |



Apartment 3.7

50 sqm / 538 sqft

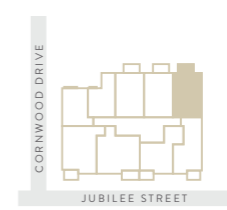
1 Bedroom

1 Bathroom

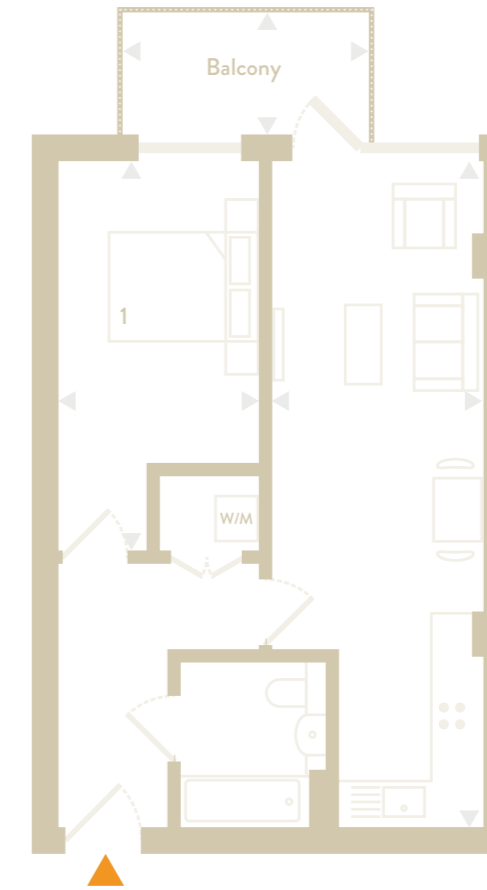
1 Balcony

Third Floor

- 5
- 4
- 3
- 2
- 1
- G



| | |
|----------------|---------------|
| Lounge/Kitchen | 8.9 × 2.9 m |
| Bedroom 1 | 5.1 × 2.7 m |
| Balcony | 5.7 sqm |
| Total | 50 sqm |
| | 538 sqft |



Apartment 3.8

50 sqm / 538 sqft

1 Bedroom
1 Bathroom
1 Balcony

Third Floor

- 5
- 4
- 3
- 2
- 1
- G



| | |
|----------------|---------------|
| Lounge/Kitchen | 8.3 × 2.8 m |
| Bedroom 1 | 4.5 × 2.6 m |
| Balcony | 5 sqm |
| Total | 50 sqm |
| | 538 sqft |



Apartment 3.9

50.6 sqm / 545 sqft

1 Bedroom
1 Bathroom
1 Balcony

Third Floor

- 5
- 4
- 3
- 2
- 1
- G



| | |
|----------------|-----------------|
| Lounge/Kitchen | 6.1 × 4.9 m |
| Bedroom 1 | 4.7 × 2.5 m |
| Balcony | 5.2 sqm |
| Total | 50.6 sqm |
| | 545 sqft |



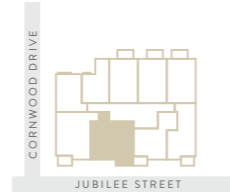
Apartment 4.1

66.3 SQM / 714 SQFT.

2 Bedrooms
2 Bathrooms
1 Balcony

Fourth Floor

- 5
- 4
- 3
- 2
- 1
- G



| | |
|----------------|-----------------|
| Lounge/Kitchen | 6.8 × 4.4 m |
| Bedroom 1 | 4.3 × 3.0 m |
| Bedroom 2 | 4.3 × 2.2 m |
| Balcony | 6.4 sqm |
| Total | 66.3 sqm |
| | 714 sqft |



All measurements are approximate and are taken at maximum widths and lengths of rooms. Plans are drawn to scale at a design phase and may vary during build. Kitchen and wardrobe sizes and layouts may differ to those shown. Furniture layouts are indicative only (where they appear). All total sqft and sqm are gross measurements. Window styles and positions may vary. Floorplans are not to scale.

Apartment 4.2

64.5 SQM / 694 SQFT

2 Bedrooms
1 Bathroom
1 Balcony

Fourth Floor

- 5
- 4
- 3
- 2
- 1
- G



| | |
|----------------|-----------------|
| Lounge/Kitchen | 6.7 × 4.7 m |
| Bedroom 1 | 3.5 × 3.5 m |
| Bedroom 2 | 3.5 × 2.3 m |
| Terrace | 6.3 sqm |
| Total | 64.5 sqm |
| | 694 sqft |



All measurements are approximate and are taken at maximum widths and lengths of rooms. Plans are drawn to scale at a design phase and may vary during build. Kitchen and wardrobe sizes and layouts may differ to those shown. Furniture layouts are indicative only (where they appear). All total sqft and sqm are gross measurements. Window styles and positions may vary. Floorplans are not to scale.

Studio 4.3

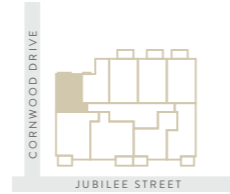
39 sqm / 420 sqft

1 Bedroom

1 Bathroom

1 Juliet Balcony

Fourth Floor



| | |
|----------------|-------------|
| Lounge/Kitchen | 7.4 × 4.9 m |
| Bedroom 1 | 2.9 × 2.7 m |

| | |
|--------------|---------------|
| Total | 39 sqm |
| | 420 sqft |



Studio 4.4

38.4 sqm / 413 sqft

1 Bedroom

1 Bathroom

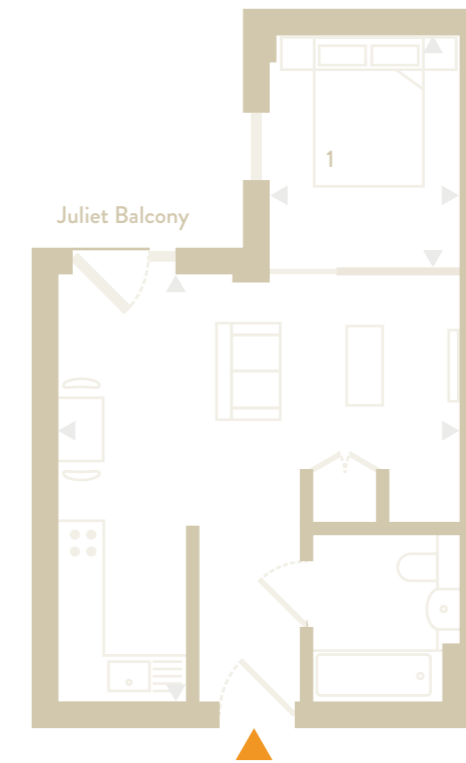
1 Juliet Balcony

Fourth Floor



| | |
|----------------|-------------|
| Lounge/Kitchen | 5.4 × 5.7 m |
| Bedroom 1 | 3.0 × 2.5 m |

| | |
|--------------|-----------------|
| Total | 38.4 sqm |
| | 413 sqft |



Apartment 4.5

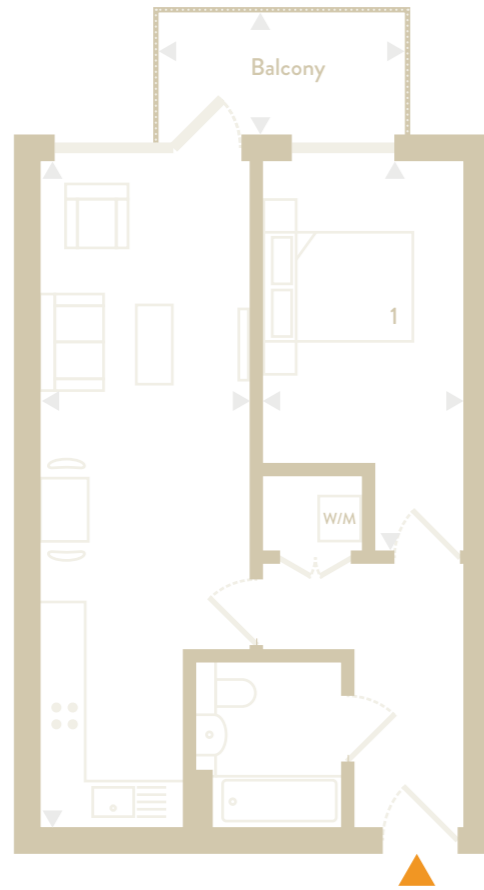
50 sqm / 538 sqft

1 Bedroom
1 Bathroom
1 Balcony

Fourth Floor



| | |
|----------------|---------------|
| Lounge/Kitchen | 8.9 × 2.9 m |
| Bedroom 1 | 5.1 × 2.7 m |
| Balcony | 5.7 sqm |
| Total | 50 sqm |
| | 538 sqft |

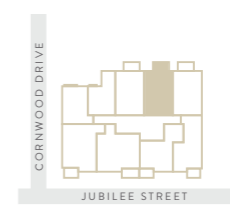


Apartment 4.6

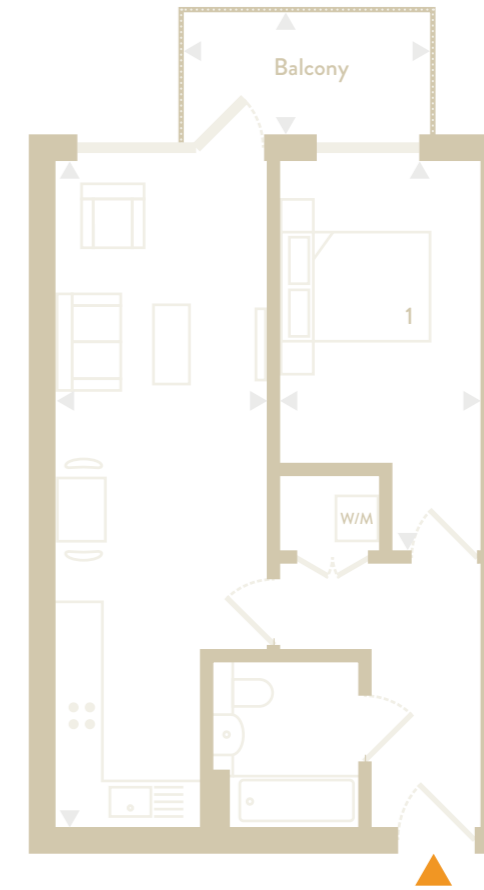
50 sqm / 538 sqft

1 Bedroom
1 Bathroom
1 Balcony

Fourth Floor



| | |
|----------------|---------------|
| Lounge/Kitchen | 8.9 × 2.9 m |
| Bedroom 1 | 5.1 × 2.7 m |
| Balcony | 5.7 sqm |
| Total | 50 sqm |
| | 538 sqft |



Apartment 4.7

50 sqm / 538 sqft

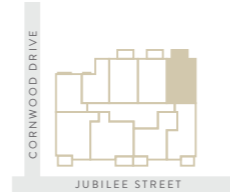
1 Bedroom

1 Bathroom

1 Balcony

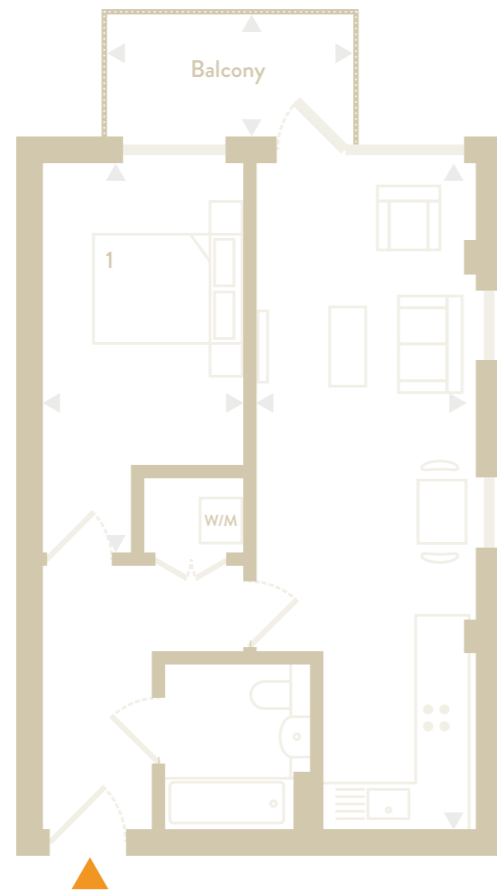
Fourth Floor

- 5
- 4
- 3
- 2
- 1
- G



| | |
|----------------|-------------|
| Lounge/Kitchen | 8.9 × 2.9 m |
| Bedroom 1 | 5.1 × 2.7 m |
| Balcony | 5.7 sqm |

| | |
|--------------|---------------|
| Total | 50 sqm |
| | 538 sqft |



All measurements are approximate and are taken at maximum widths and lengths of rooms. Plans are drawn to scale at a design phase and may vary during build. Kitchen and wardrobe sizes and layouts may differ to those shown. Furniture layouts are indicative only (where they appear). All total sqft and sqm are gross measurements. Window styles and positions may vary. Floorplans are not to scale.

Apartment 4.8

50 sqm / 538 sqft

1 Bedroom

1 Bathroom

1 Balcony

Fourth Floor

- 5
- 4
- 3
- 2
- 1
- G



| | |
|----------------|-------------|
| Lounge/Kitchen | 8.3 × 2.8 m |
| Bedroom 1 | 4.5 × 2.6 m |
| Balcony | 5 sqm |

| | |
|--------------|---------------|
| Total | 50 sqm |
| | 538 sqft |



All measurements are approximate and are taken at maximum widths and lengths of rooms. Plans are drawn to scale at a design phase and may vary during build. Kitchen and wardrobe sizes and layouts may differ to those shown. Furniture layouts are indicative only (where they appear). All total sqft and sqm are gross measurements. Window styles and positions may vary. Floorplans are not to scale.

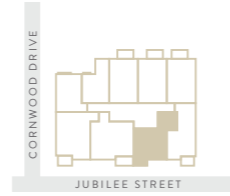
Apartment 4.9

50.6 SQM / 545 SQFT.

1 Bedroom
1 Bathroom
1 Balcony

Fourth Floor

- 5
- 4
- 3
- 2
- 1
- G



| | |
|----------------|-----------------|
| Lounge/Kitchen | 6.1 × 4.9 m |
| Bedroom 1 | 4.7 × 2.5 m |
| Balcony | 5.2 sqm |
| Total | 50.6 sqm |
| | 545 sqft |



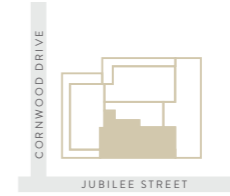
Penthouse 5.1

79 SQM / 850 SQFT

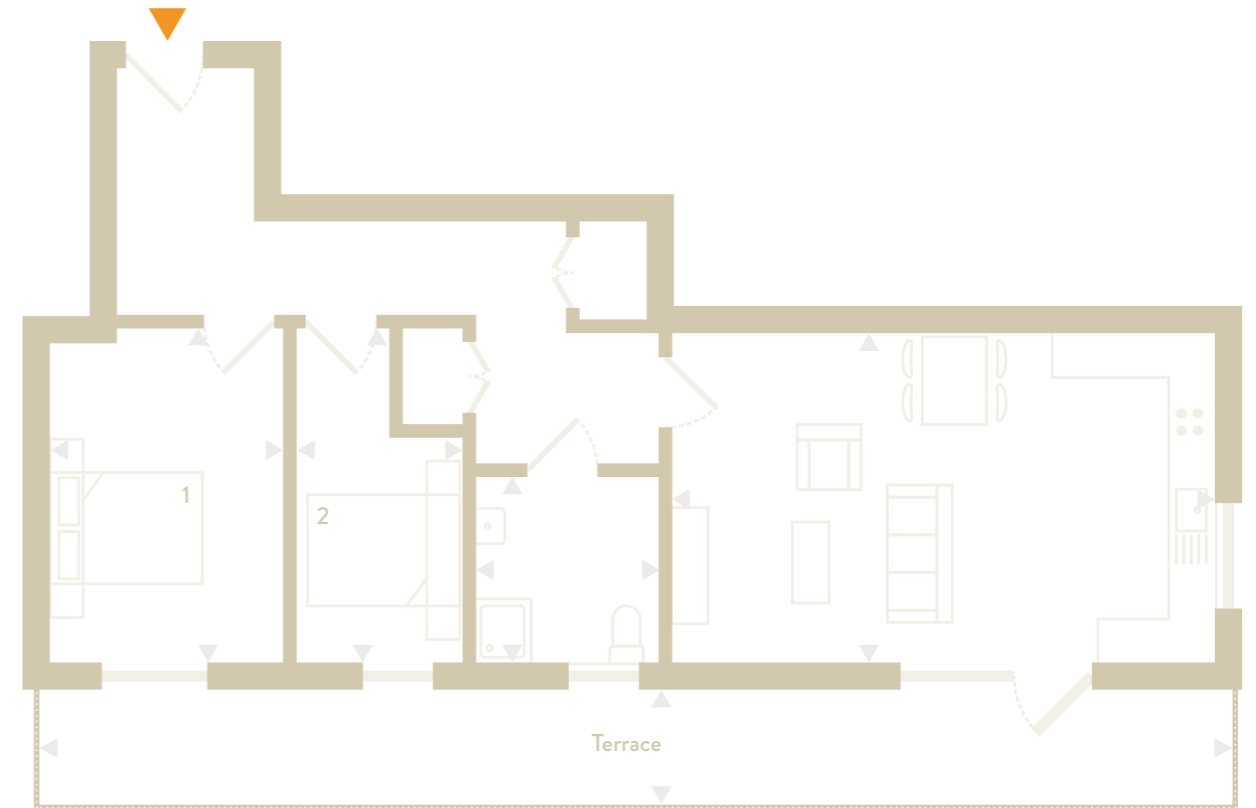
2 Bedrooms
1 Bathroom
1 Terrace

Fifth Floor

- 5
- 4
- 3
- 2
- 1
- G



| | |
|----------------|---------------|
| Lounge/Kitchen | 7.0 × 4.3 m |
| Bedroom 1 | 4.3 × 3.1 m |
| Bedroom 2 | 4.3 × 2.2 m |
| Terrace | 22.8 sqm |
| Total | 79 sqm |
| | 850 sqft |

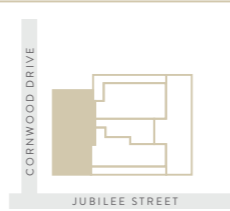


Penthouse 5.2

85.8 SQM / 924 SQFT

3 Bedrooms
2 Bathrooms
1 Terrace

Fifth Floor



| | |
|----------------|-------------|
| Lounge/Kitchen | 6.7 × 4.7 m |
| Bedroom 1 | 5.3 × 3.1 m |
| Bedroom 2 | 3.3 × 2.7 m |
| Bedroom 3 | 2.9 × 2.2 m |
| Terrace | 48.4 sqm |

| | |
|--------------|-----------------|
| Total | 85.8 sqm |
| | 924 sqft |

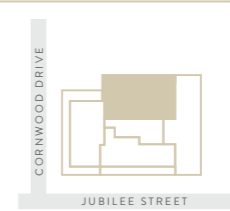


Penthouse 5.3

94.4 SQM / 1,016 SQFT

3 Bedrooms
2 Bathrooms
1 Terrace

Fifth Floor



| | |
|----------------|-------------|
| Lounge/Kitchen | 7.0 × 6.2 m |
| Bedroom 1 | 5.6 × 3.9 m |
| Bedroom 2 | 3.5 × 2.6 m |
| Bedroom 3 | 3.5 × 2.5 m |
| Terrace | 29.4 sqm |

| | |
|--------------|-----------------|
| Total | 94.4 sqm |
| | 1,016 sqft |

