

Locksley Place

Enfield

A collection of 2 bedroom apartments
and 3 & 4 bedroom houses



Conveniently located off Lavender Hill in Enfield, Locksley Place will provide an aspirational collection of 2 bedroom apartments and 3 & 4 bedroom houses. Less than 2 miles from Enfield town centre, with its range of high street shops, eateries and cinema and close to the wide open green spaces of Enfield Chase and Trent Park,

residents at Locksley Place will find the best of town and country living.

Families will find a good number of schools to choose from in the area, with all ages catered for. And with simple access to good transport links into London and beyond, there are a great number of benefits to making this your new home.

With easy commuting into London by train from Gordon Hill station, with services to Kings Cross and Moorgate stations both around 36 minutes. The M25 (J24) is just 4 miles drive, while Oakwood Underground station (Piccadilly Line) is just 3.3 miles (11 minutes' drive).

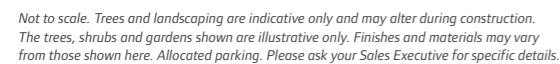
Locksley Place

Lavender Hill, Enfield, London EN2 8JL

2 bedroom apartments
and 3 & 4 bedroom houses


Linden
HOMES

All journey times and distances are approximate.



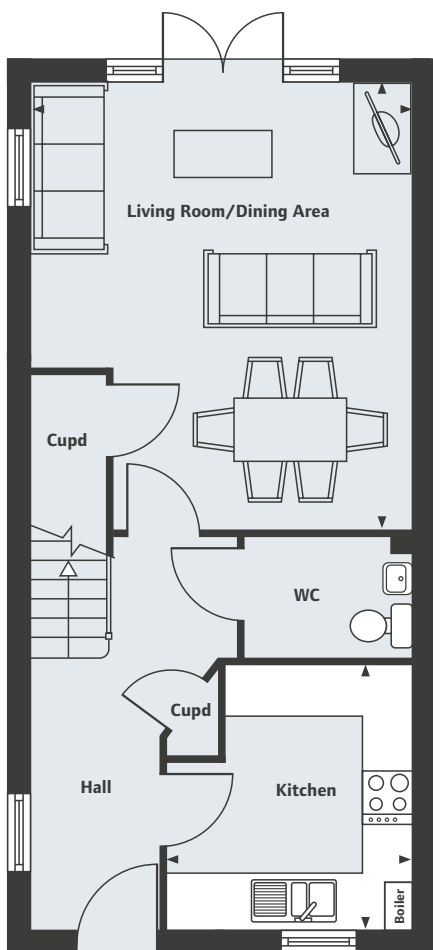
Locksley Place

Enfield

The Penrith Version 1

4 bedroom home

Home 60



Ground Floor

Living Room/Dining Area

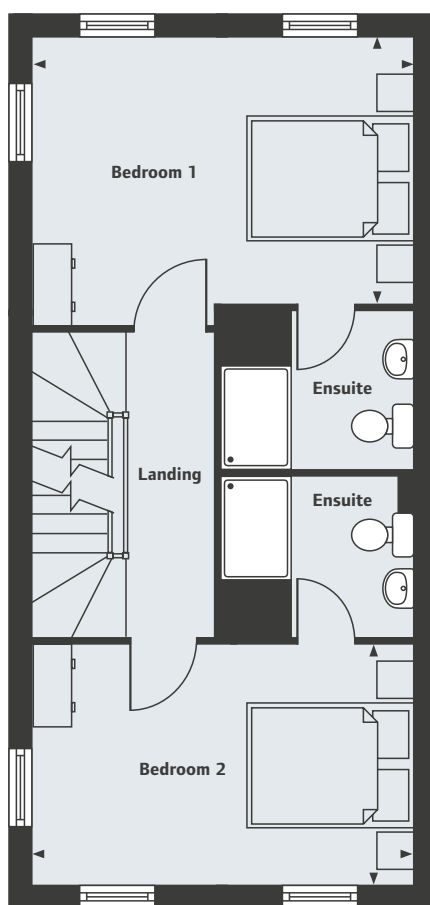
5.20m x 4.45m

17'1" x 14'7"

Kitchen

3.07m x 2.89m

10'1" x 9'6"



First Floor

Bedroom 1

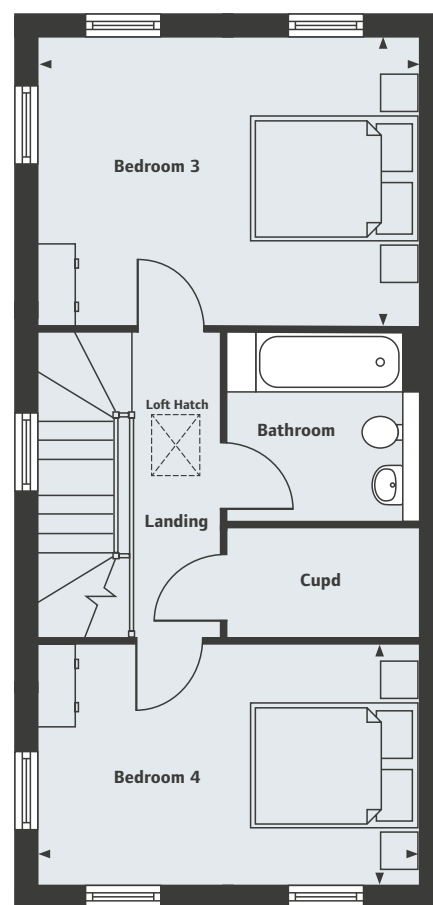
4.45m x 3.31m

14'7" x 10'10"

Bedroom 2

4.45m x 2.80m

14'7" x 9'2"



Second Floor

Bedroom 3

4.45m x 3.31m

14'7" x 10'10"

Bedroom 4

4.45m x 2.80m

14'7" x 9'2"

Locksley Place

Lavender Hill, Enfield, London EN2 8JL

2 bedroom apartments and 3 & 4 bedroom houses

02037 334 167

Please note, floorplans and dimensions are taken from architectural drawings and are for guidance only. Dimensions stated are within a tolerance of plus or minus 50mm. Overall dimensions are usually stated and there may be projections into these. With our continual improvement policy we constantly review our designs and specification to ensure we deliver the best product to our customers. Computer generated images not to scale. Finishes and materials may vary and landscaping is illustrative only. Kitchen layouts are indicative only and may change. To confirm specific details on our homes please ask your Sales Executive. LHENF05/March 2019.

Linden
HOMES

Locksley Place

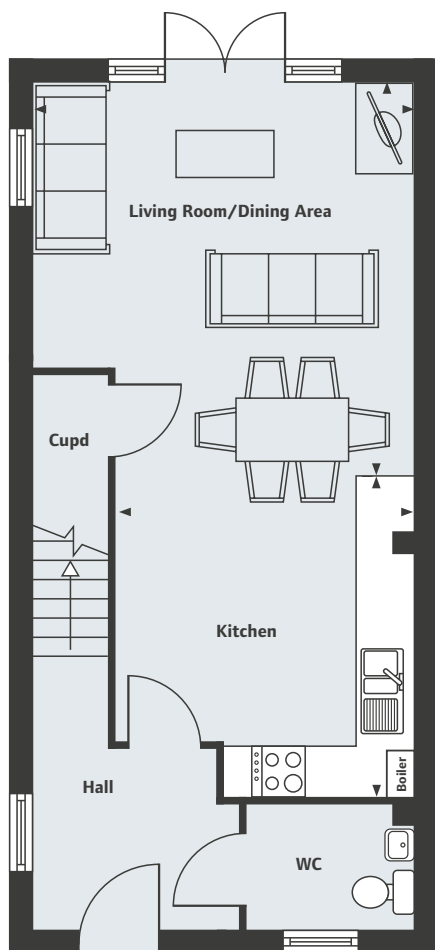
Enfield

The Penrith Version 2

4 bedroom home

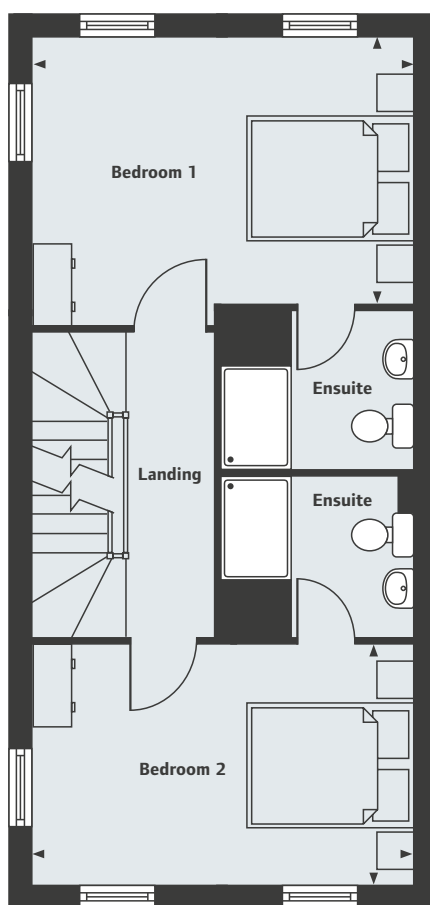


Homes 14†, 15†, 16†, 17†, 18†,
19†, 20†, 24, 28† & 29



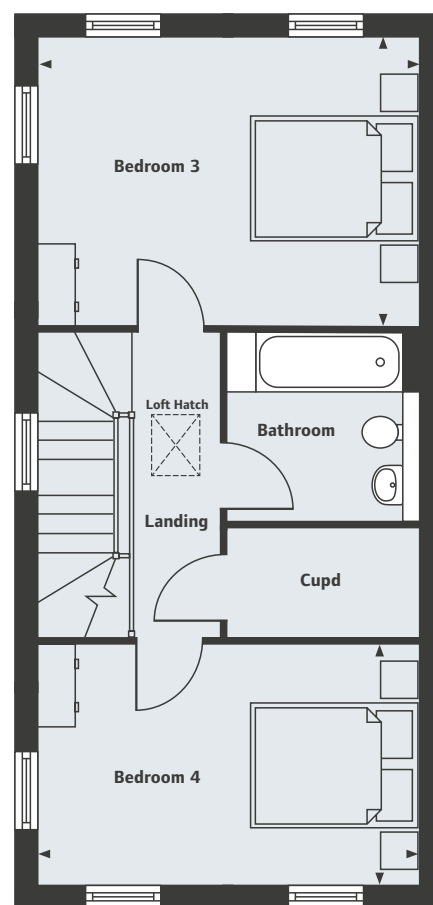
Ground Floor

Living Room/Dining Area
4.62m x 4.45m 15'1" x 14'7"
Kitchen
3.72m x 3.39m 12'2" x 11'1"



First Floor

Bedroom 1
4.45m x 3.31m 14'7" x 10'10"
Bedroom 2
4.45m x 2.80m 14'7" x 9'2"



Second Floor

Bedroom 3
4.45m x 3.31m 14'7" x 10'10"
Bedroom 4
4.45m x 2.80m 14'7" x 9'2"

†Homes 14, 15, 16, 17, 18, 19, 20 & 28 are handed. * Windows to home 24 only.

Locksley Place

Lavender Hill, Enfield, London EN2 8JL
2 bedroom apartments and 3 & 4 bedroom houses

02037 334 167

Please note, floorplans and dimensions are taken from architectural drawings and are for guidance only. Dimensions stated are within a tolerance of plus or minus 50mm. Overall dimensions are usually stated and there may be projections into these. With our continual improvement policy we constantly review our designs and specification to ensure we deliver the best product to our customers. Computer generated images not to scale. Finishes and materials may vary and landscaping is illustrative only. Kitchen layouts are indicative only and may change. To confirm specific details on our homes please ask your Sales Executive. LHENF05/March 2019.

Linden
HOMES

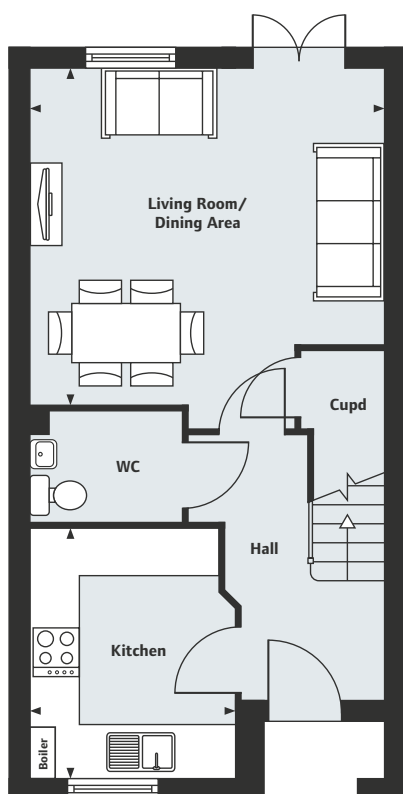
Locksley Place

Enfield

The Bampton Version 1

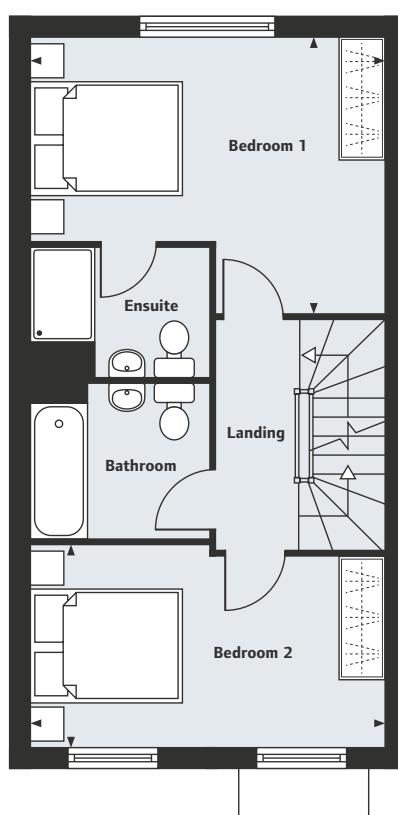
3 bedroom home

Homes 95, 106, 108 & 110



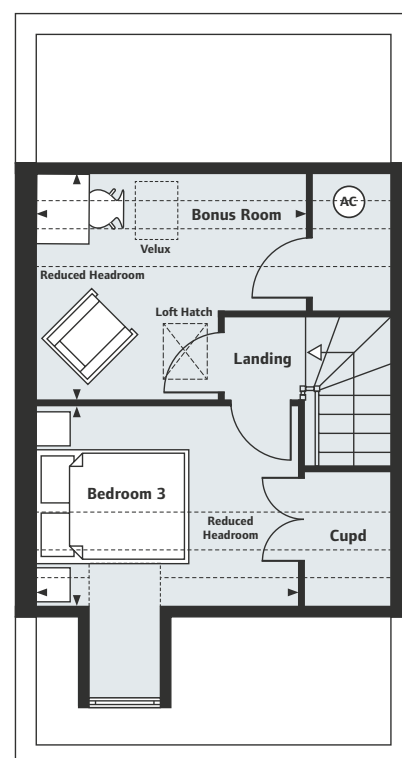
Ground Floor

Living Room/Dining Area	
4.40m x 4.21m	14'5" x 13'10"
Kitchen	
3.10m x 2.54m	10'2" x 8'4"



First Floor

Bedroom 1	
4.40m x 3.44m	14'5" x 11'3"
Bedroom 2	
4.40m x 2.50m	14'5" x 8'2"



Second Floor

Bedroom 3	
3.26m x 2.50m	10'8" x 8'2"
Bonus Room	
3.36m x 2.83m	11'0" x 9'3"

Locksley Place

Lavender Hill, Enfield, London EN2 8JL
2 bedroom apartments and 3 & 4 bedroom houses

02037 334 167

Please note, floorplans and dimensions are taken from architectural drawings and are for guidance only. Dimensions stated are within a tolerance of plus or minus 50mm. Overall dimensions are usually stated and there may be projections into these. With our continual improvement policy we constantly review our designs and specification to ensure we deliver the best product to our customers. Computer generated images not to scale. Finishes and materials may vary and landscaping is illustrative only. Kitchen layouts are indicative only and may change. To confirm specific details on our homes please ask your Sales Executive. LHENF13/June 2019.

Linden
HOMES

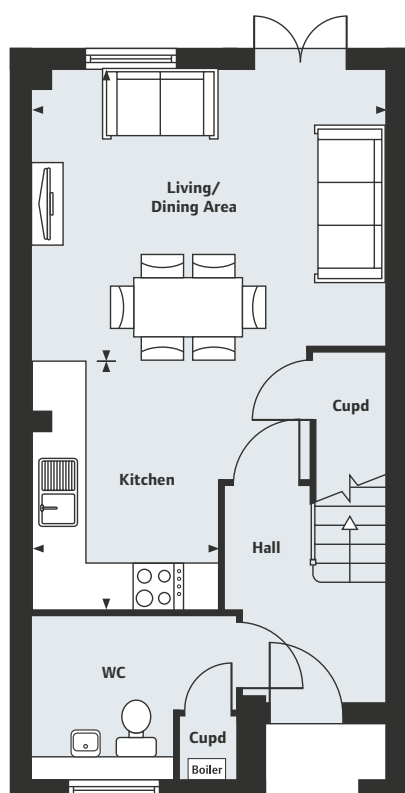
Locksley Place

Enfield

The Bampton Version 2

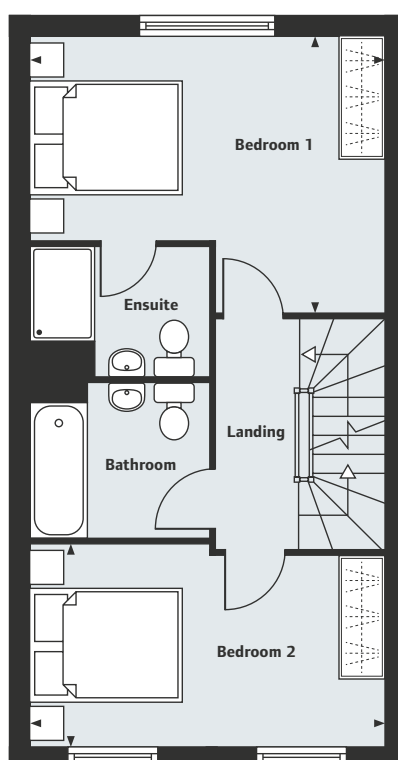
3 bedroom home

Homes 94, 96, 107, 109 & 111



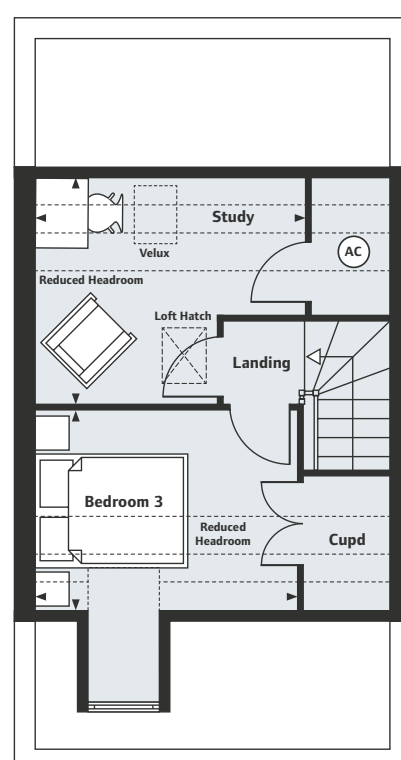
Ground Floor

Living/Dining Area	14'7" x 13'11"
Kitchen	10'3" x 8'4"



First Floor

Bedroom 1	14'5" x 11'3"
Bedroom 2	14'7" x 8'2"



Second Floor

Bedroom 3	10'10" x 8'2"
Study	11'2" x 9'3"

Locksley Place

Lavender Hill, Enfield, London EN2 8JL
2 bedroom apartments and 3 & 4 bedroom houses

02037 334 167

Please note, floorplans and dimensions are taken from architectural drawings and are for guidance only. Dimensions stated are within a tolerance of plus or minus 50mm. Overall dimensions are usually stated and there may be projections into these. With our continual improvement policy we constantly review our designs and specification to ensure we deliver the best product to our customers. Computer generated images not to scale. Finishes and materials may vary and landscaping is illustrative only. Kitchen layouts are indicative only and may change. To confirm specific details on our homes please ask your Sales Executive. LHENF13/June 2019.

Linden
HOMES

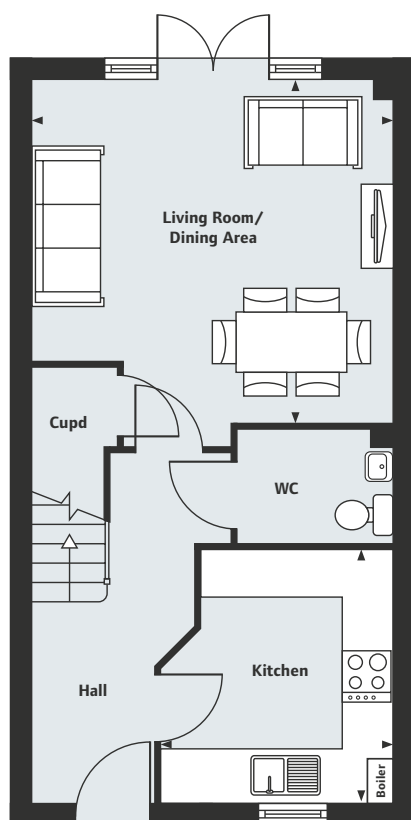
Locksley Place

Enfield

The Pendragon Version 1

3 bedroom home

Homes 22†, 73, 75, 84, 87, 89, 127,
129, 134, 136 & 137



Ground Floor

Living Room/Dining Area

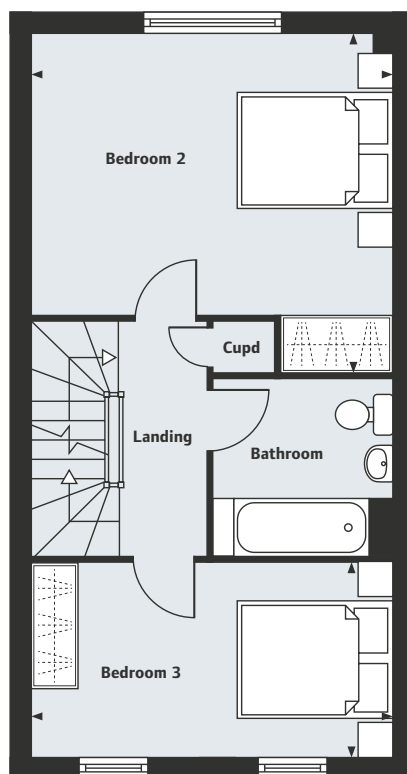
4.40m x 4.20m

14'5" x 13'9"

Kitchen

3.09m x 2.84m

10'2" x 9'4"



First Floor

Bedroom 2

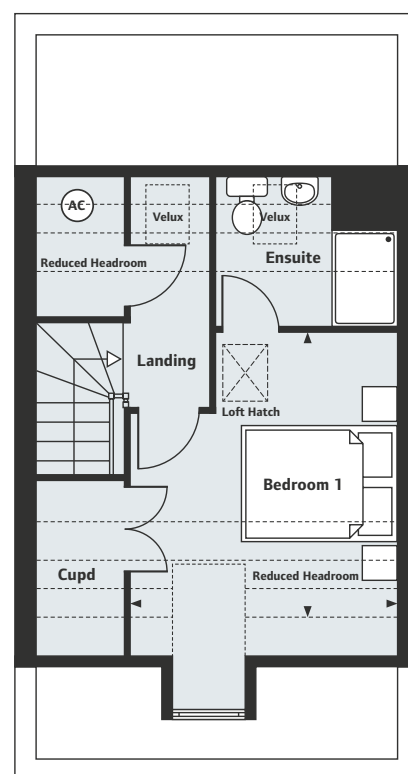
4.40m x 4.15m

14'5" x 13'7"

Bedroom 3

4.40m x 2.35m

14'5" x 7'9"



Second Floor

Bedroom 1

3.51m x 3.26m

11'6" x 10'8"

†Home 22 is handed.

Locksley Place

Lavender Hill, Enfield, London EN2 8JL

2 bedroom apartments and 3 & 4 bedroom houses

02037 334 167

Please note, floorplans and dimensions are taken from architectural drawings and are for guidance only. Dimensions stated are within a tolerance of plus or minus 50mm. Overall dimensions are usually stated and there may be projections into these. With our continual improvement policy we constantly review our designs and specification to ensure we deliver the best product to our customers. Computer generated images not to scale. Finishes and materials may vary and landscaping is illustrative only. Kitchen layouts are indicative only and may change. To confirm specific details on our homes please ask your Sales Executive. LHENF13/June 2019.

Linden
HOMES

Locksley Place

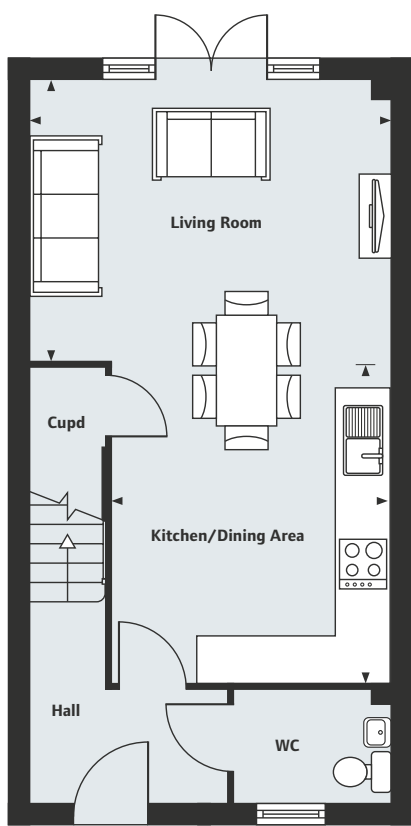
Enfield

The Pendragon Version 2

3 bedroom home

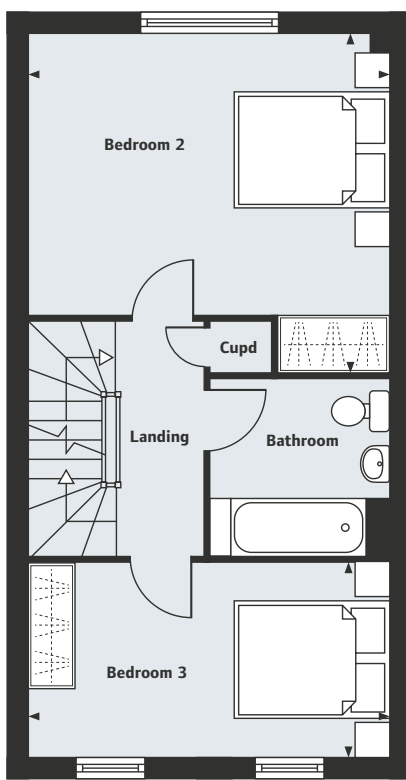


Homes 21[†], 23[†], 72, 74, 81, 82,
83, 88, 128, 130, 135 & 138



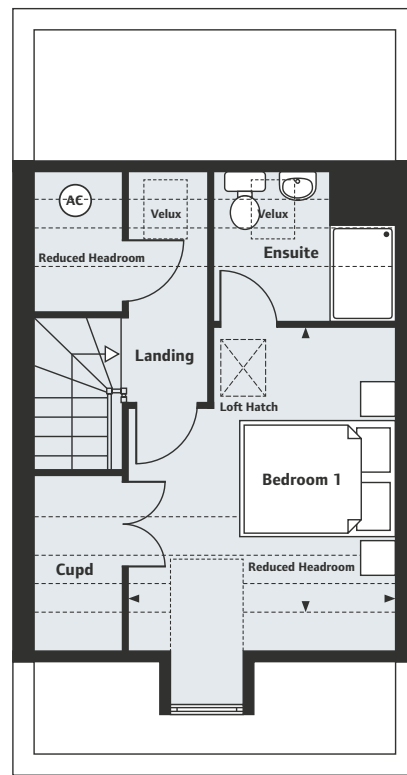
Ground Floor

Living Room
4.40m x 3.45m 14'5" x 11'4"
Kitchen/Dining Area
3.94m x 3.35m 12'11" x 11'0"



First Floor

Bedroom 2
4.40m x 3.45m 14'5" x 11'4"
Bedroom 3
4.40m x 2.35m 14'5" x 7'9"



Second Floor

Bedroom 1
3.51m x 3.26m 11'6" x 10'8"

*Alternate window sizes/positions to some homes. †Homes 21 & 23 are handed.

Locksley Place

Lavender Hill, Enfield, London EN2 8JL
2 bedroom apartments and 3 & 4 bedroom houses

02037 334 167

Please note, floorplans and dimensions are taken from architectural drawings and are for guidance only. Dimensions stated are within a tolerance of plus or minus 50mm. Overall dimensions are usually stated and there may be projections into these. With our continual improvement policy we constantly review our designs and specification to ensure we deliver the best product to our customers. Computer generated images not to scale. Finishes and materials may vary and landscaping is illustrative only. Kitchen layouts are indicative only and may change. To confirm specific details on our homes please ask your Sales Executive. LHENF13/June 2019.

Linden
HOMES

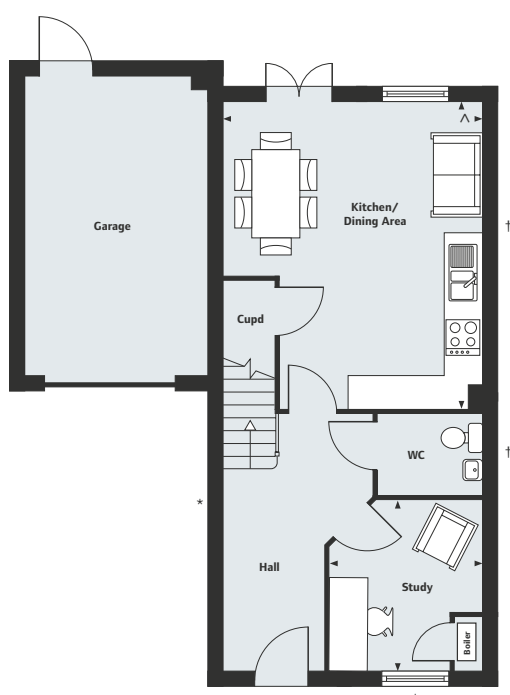
Locksley Place

Enfield

The Lambton

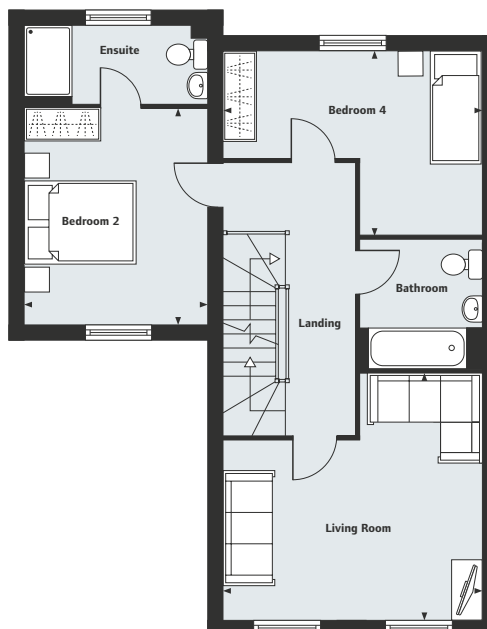
4 bedroom home

Homes 25, 26[†], 27, 61, 64[†], 65,
66[†], 67, 68[†], 69 & 70[†]



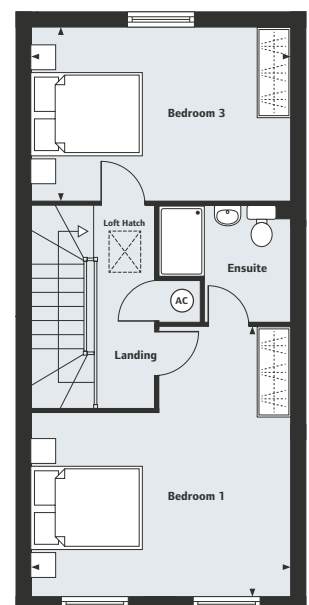
Ground Floor

Kitchen/Dining Area	17'2" x 14'5"
Study	9'7" x 8'7"
2.92m x 2.62m	



First Floor

Living Room	14'5" x 14'2"
Bedroom 2	12'2" x 9'11"
Bedroom 4	14'5" x 10'2"
3.70m x 3.03m	
4.40m x 3.10m	



Second Floor

Bedroom 1	15'5" x 14'5"
Bedroom 3	14'5" x 9'10"
4.71m x 4.40m	
4.40m x 3.00m	

*Alternate window sizes for homes 66-69. †Window positions to home 61 only. ‡Homes 26, 64, 66, 68 & 70 are handed.
^Please note: Boiler position for homes 66, 67, 68 & 69.

Locksley Place

Lavender Hill, Enfield, London EN2 8JL
2 bedroom apartments and 3 & 4 bedroom houses

02037 334 167

Please note, floorplans and dimensions are taken from architectural drawings and are for guidance only. Dimensions stated are within a tolerance of plus or minus 50mm. Overall dimensions are usually stated and there may be projections into these. With our continual improvement policy we constantly review our designs and specification to ensure we deliver the best product to our customers. Computer generated images not to scale. Finishes and materials may vary and landscaping is illustrative only. Kitchen layouts are indicative only and may change. To confirm specific details on our homes please ask your Sales Executive. LHENF13/June 2019.

Linden
HOMES

Locksley Place

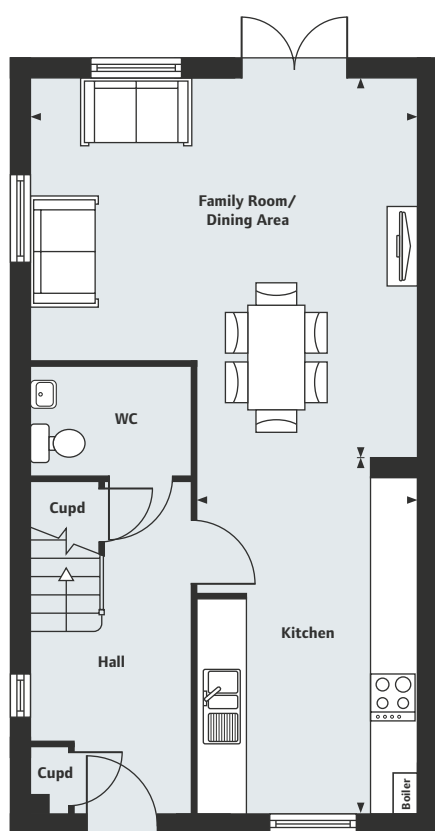
Enfield

The Codnor

4 bedroom home

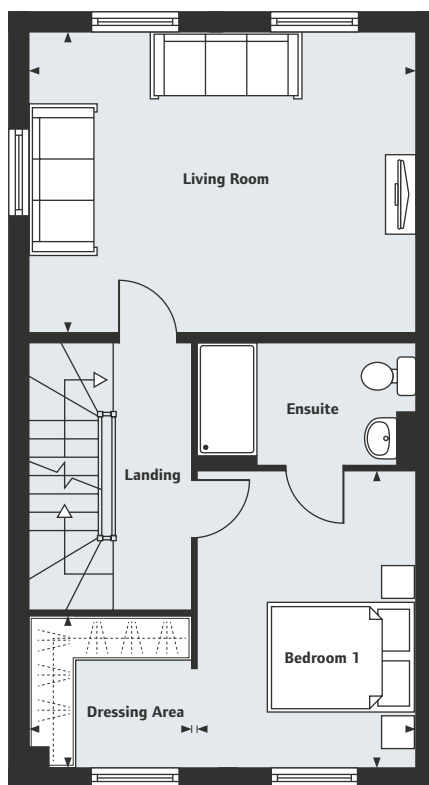


Homes 71†, 85, 86†, 93, 97, 102†, 105†, 112 & 131



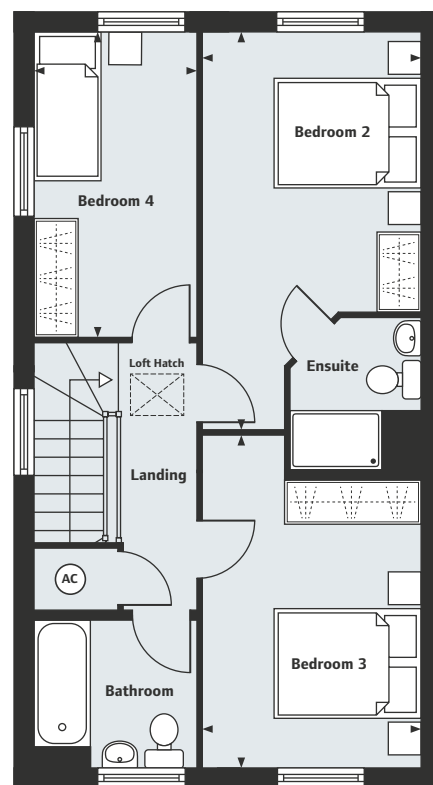
Ground Floor

Family Room/Dining Area
5.05m x 4.95m 16'7" x 16'3"
Kitchen
4.61m x 2.85m 15'1" x 9'4"



First Floor

Living Room
5.05m x 3.90m 16'7" x 12'10"
Bedroom 1
3.85m x 2.85m 12'8" x 9'4"
Dressing Area
2.10m x 1.97m 6'11" x 6'6"



Second Floor

Bedroom 2
3.65m x 2.81m 12'0" x 9'3"
Bedroom 3
4.35m x 2.81m 14'3" x 9'3"
Bedroom 4
3.95m x 2.10m 13'0" x 6'11"

†Homes 71, 86, 102 & 105 are handed.

Locksley Place
Lavender Hill, Enfield, London EN2 8JL
2 bedroom apartments and 3 & 4 bedroom houses
02037 334 167

Please note, floorplans and dimensions are taken from architectural drawings and are for guidance only. Dimensions stated are within a tolerance of plus or minus 50mm. Overall dimensions are usually stated and there may be projections into these. With our continual improvement policy we constantly review our designs and specification to ensure we deliver the best product to our customers. Computer generated images not to scale. Finishes and materials may vary and landscaping is illustrative only. Kitchen layouts are indicative only and may change. To confirm specific details on our homes please ask your Sales Executive. LHENF13/June 2019.

Linden
HOMES

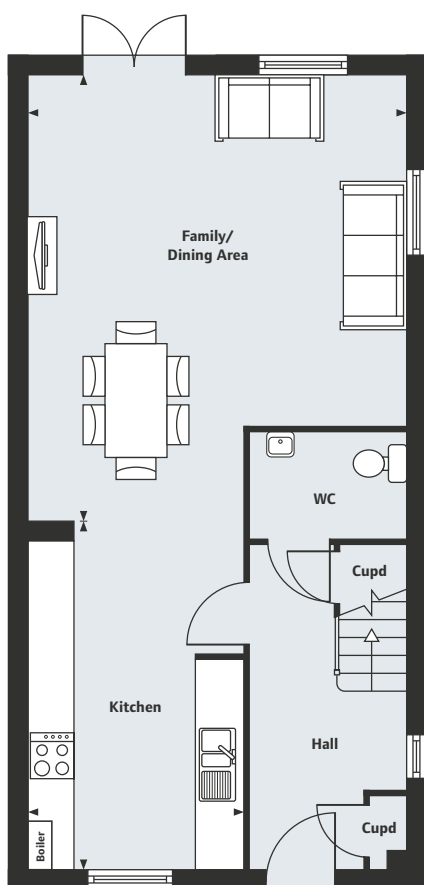
Locksley Place

Enfield

The Greystoke

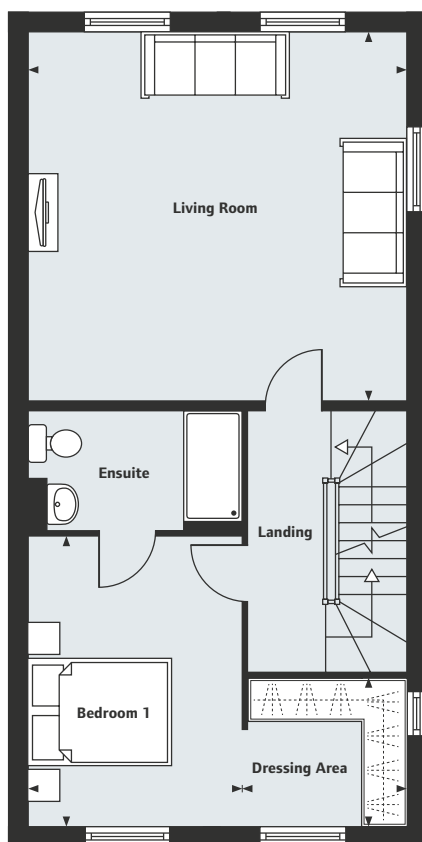
4 bedroom home

Home 1



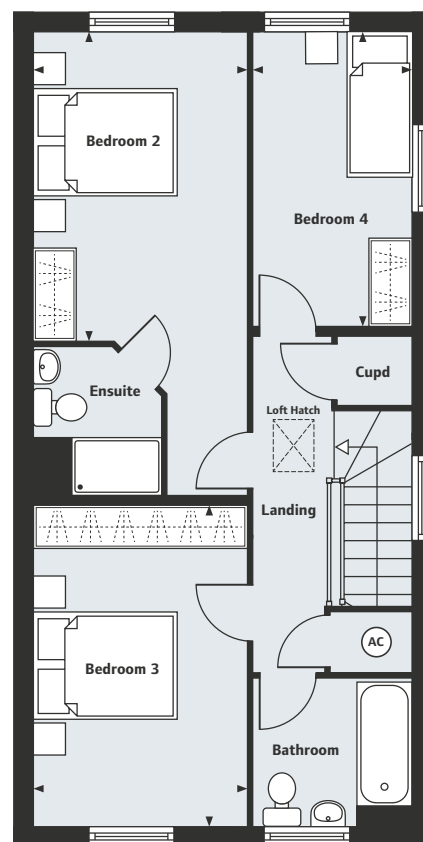
Ground Floor

Family/Dining Area	5.95m x 5.00m	19'6" x 16'5"
Kitchen	4.61m x 2.85m	15'1" x 9'4"



First Floor

Living Room	5.02m x 4.92m	16'6" x 16'2"
Bedroom 1	3.85m x 2.83m	12'8" x 9'3"
Dressing Area	2.16m x 1.96m	7'1" x 6'5"



Second Floor

Bedroom 2	4.12m x 2.86m	13'6" x 9'5"
Bedroom 3	4.32m x 2.86m	14'2" x 9'5"
Bedroom 4	3.95m x 2.11m	13'0" x 6'11"

Locksley Place

Lavender Hill, Enfield, London EN2 8JL

2 bedroom apartments and 3 & 4 bedroom houses

02037 334 167

Please note, floorplans and dimensions are taken from architectural drawings and are for guidance only. Dimensions stated are within a tolerance of plus or minus 50mm. Overall dimensions are usually stated and there may be projections into these. With our continual improvement policy we constantly review our designs and specification to ensure we deliver the best product to our customers. Computer generated images not to scale. Finishes and materials may vary and landscaping is illustrative only. Kitchen layouts are indicative only and may change. To confirm specific details on our homes please ask your Sales Executive. LHENF13/June 2019.

Linden
HOMES

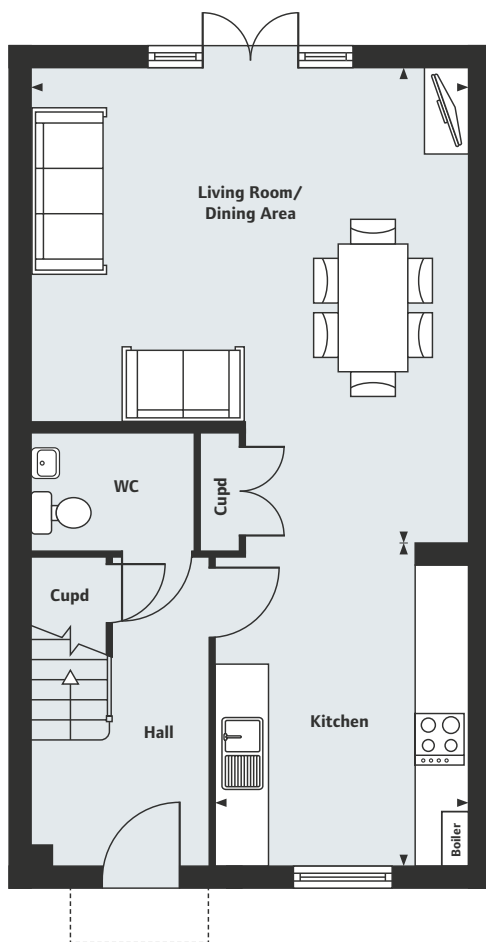
Locksley Place

Enfield

The Linstock

3 bedroom home

Homes 98[†], 99[†], 100[†], 101[†], 103,
104, 132 & 133



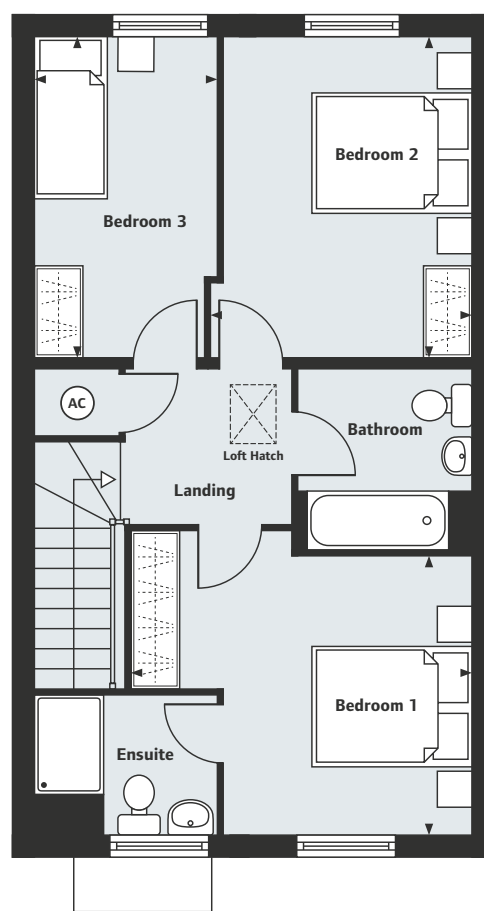
Ground Floor

Living Room/Dining Area

5.80m x 5.14m 19'0" x 16'10"

Kitchen

3.65m x 3.00m 12'0" x 9'10"



First Floor

Bedroom 1

3.31m x 3.30m 10'10" x 10'10"

Bedroom 2

3.80m x 2.90m 12'6" x 9'6"

Bedroom 3

3.80m x 2.11m 12'6" x 6'11"

[†]Homes 98, 99, 100 & 101 are handed.

Locksley Place

Lavender Hill, Enfield, London EN2 8JL

2 bedroom apartments and 3 & 4 bedroom houses

02037 334 167

Please note, floorplans and dimensions are taken from architectural drawings and are for guidance only. Dimensions stated are within a tolerance of plus or minus 50mm. Overall dimensions are usually stated and there may be projections into these. With our continual improvement policy we constantly review our designs and specification to ensure we deliver the best product to our customers. Computer generated images not to scale. Finishes and materials may vary and landscaping is illustrative only. Kitchen layouts are indicative only and may change. To confirm specific details on our homes please ask your Sales Executive. LHENF13/June 2019.

Linden
HOMES

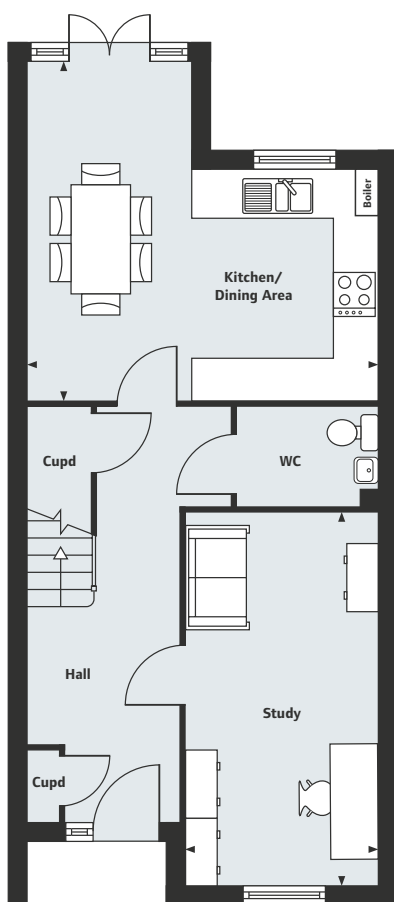
Locksley Place

Enfield

The Appleby

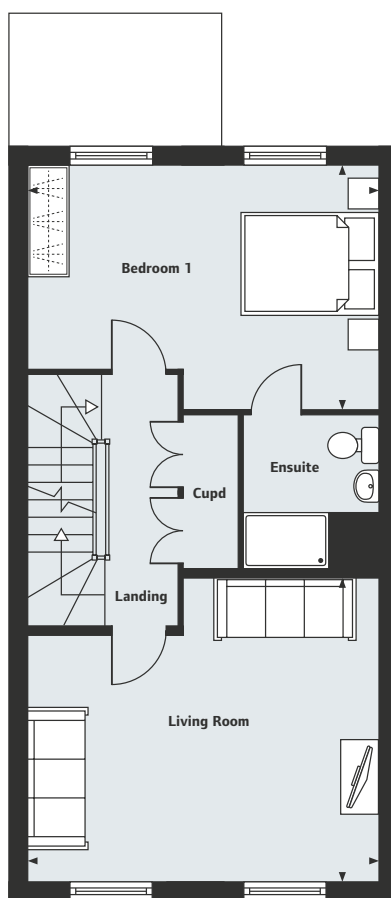
4 bedroom home

Homes 2†, 3, 12† & 13



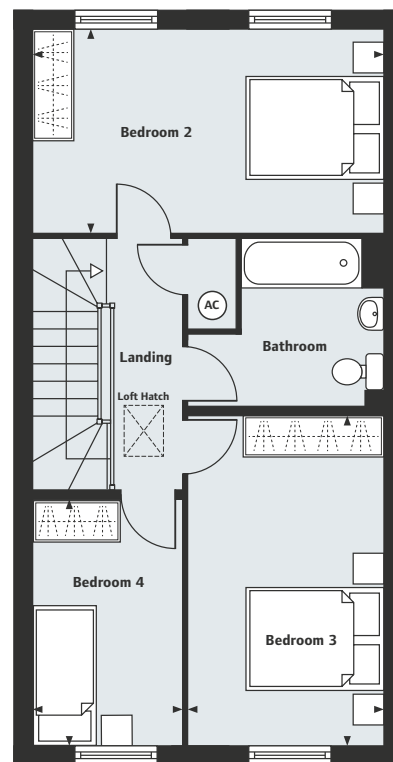
Ground Floor

Kitchen/Dining Area	15'9" x 15'5"
Study	16'11" x 8'6"
5.15m x 2.60m	



First Floor

Living Room	15'9" x 13'9"
Bedroom 1	15'9" x 11'0"
4.82m x 3.35m	



Second Floor

Bedroom 2	15'9" x 9'2"
Bedroom 3	15'1" x 8'10"
Bedroom 4	11'2" x 6'8"
3.41m x 2.03m	

†Homes 2 & 12 are handed.

Locksley Place

Lavender Hill, Enfield, London EN2 8JL
2 bedroom apartments and 3 & 4 bedroom houses

02037 334 167

Please note, floorplans and dimensions are taken from architectural drawings and are for guidance only. Dimensions stated are within a tolerance of plus or minus 50mm. Overall dimensions are usually stated and there may be projections into these. With our continual improvement policy we constantly review our designs and specification to ensure we deliver the best product to our customers. Computer generated images not to scale. Finishes and materials may vary and landscaping is illustrative only. Kitchen layouts are indicative only and may change. To confirm specific details on our homes please ask your Sales Executive. LHENF13/June 2019.

Linden
HOMES

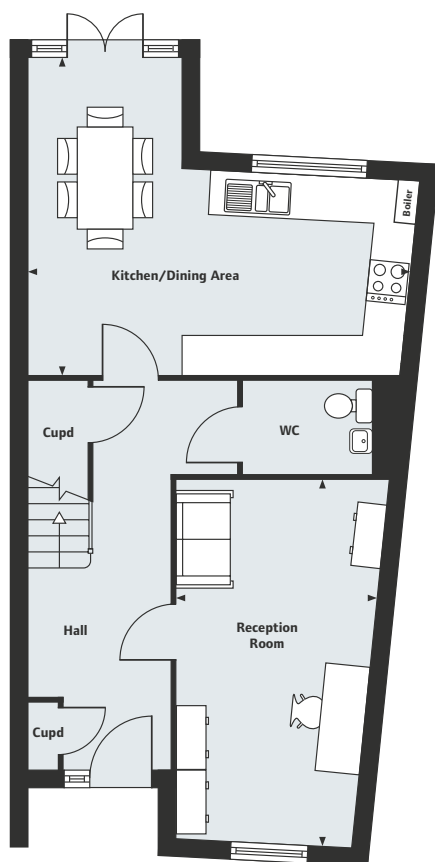
Locksley Place

Enfield

The Bewcastle

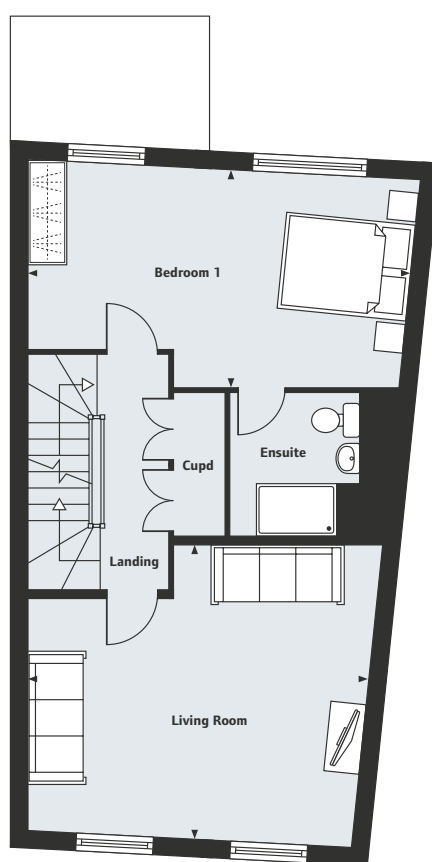
4 bedroom home

Homes 4†, 5, 6†, 7, 8†,
9, 10† & 11



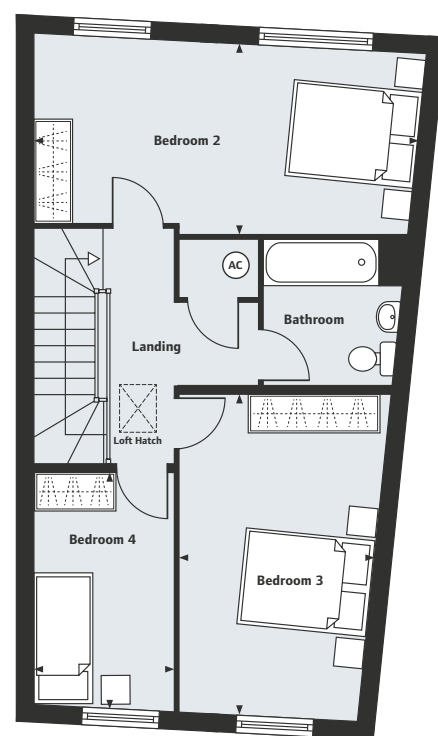
Ground Floor

Kitchen/Dining Area	18'6" x 15'5"
Reception Room	17'6" x 9'6"
5.63m x 4.70m	
5.34m x 2.90m	



First Floor

Living Room	16'6" x 14'2"
Bedroom 1	18'6" x 10'6"
5.03m x 4.33m	
5.65m x 3.20m	



Second Floor

Bedroom 2	18'6" x 9'3"
Bedroom 3	15'7" x 9'3"
Bedroom 4	11'6" x 6'8"
5.65m x 2.82m	
4.74m x 2.82m	
3.50m x 2.03m	

†Homes 4, 6, 8 & 10 are handed.

Locksley Place

Lavender Hill, Enfield, London EN2 8JL
2 bedroom apartments and 3 & 4 bedroom houses

02037 334 167

Please note, floorplans and dimensions are taken from architectural drawings and are for guidance only. Dimensions stated are within a tolerance of plus or minus 50mm. Overall dimensions are usually stated and there may be projections into these. With our continual improvement policy we constantly review our designs and specification to ensure we deliver the best product to our customers. Computer generated images not to scale. Finishes and materials may vary and landscaping is illustrative only. Kitchen layouts are indicative only and may change. To confirm specific details on our homes please ask your Sales Executive. LHENF13/June 2019.

Linden
HOMES

Locksley Place

Enfield

Around the neighbourhood



1 CEDAR PARK
DAY NURSERY

2 ENFIELD GOLF CLUB

3 GORDON HILL
TRAIN STATION

4 ST MICHAEL'S C OF E
PRIMARY SCHOOL

5 ENFIELD TOWN LIBRARY

6 PALACE SHOPPING
CENTRE

7 ENFIELD GRAMMAR
SCHOOL

8 ENFIELD COUNTY
SCHOOL (UPPER)

9 LAVENDER PRIMARY
SCHOOL

10 ENFIELD COUNTY
SCHOOL (LOWER)

11 DAVID LLOYD GYM

12 LEE VALLEY
COUNTRY PARK

For all sales enquiries please call
02037 334 167
lindenhomes.co.uk/locksleyplace

LHENF05/March 2019.


Linden
HOMES