

FINAL  PHASE

**ONE, TWO
& THREE
BEDROOM
APARTMENTS**

NORTHOLT

**EXPLORE
DISCOVER
CONNECT**



Because good homes make everything possible



[Show apartment](#)



The finer details

Everything about your new home at Rectory Park shows we have created a special space for you to enjoy living in.



[Show apartment](#)



Specification

Your new home has been designed to make the most of natural light and is equipped for modern living.

KITCHEN

Fitted kitchens by Symphony New York range.

Gloss white fitted units with gloss pearl grey doors to the larder and/or fridge/freezer (ground to second floor)

Gloss pearl grey fitted units with gloss dusk grey doors to the larder and/or fridge/freezer (third to fifth floor)

Larder unit & Indesit integrated fridge/freezer

Indesit integrated oven, hood and hob with stainless steel splashback

Indesit integrated dishwasher

Indesit washer / dryer

LED Chrome downlighters

GENERAL

Grey carpet to bedrooms

Moonlight Oak laminate flooring (Ground to second floor).
Reclaimed Chestnut Natural laminate flooring (third to fifth floor)

Fitted wardrobe to master bedrooms with sliding opaque glass doors

Smoke detectors and Carbon monoxide detectors

LED Chrome downlighters

We are unable to accommodate any individual changes, additions or amendments to the specification, layout or plans to any individual apartments. Your attention is drawn to the fact that it may not be possible to obtain the products as referred to in the specification. In such cases similar alternatives will be provided. Network Homes reserve the right to make these changes as required. January 2020.



Specification

Each apartment has it's own balcony or terrace, with some beautiful views of Rectory Park and the surrounding areas.

OUTSIDE AREA

Garden, balcony or terrace to all apartments

Entry phone system
(Not to all ground floor apartments)

Secure cycle storage

BATHROOM

Contemporary sanitary ware in white finished with matching floor and wall tiles. Bathrooms are tiled with Madagascar Blanco tiles

Mirrored wall cabinet with integral shaver socket and LED feature lighting

Chrome heated towel rail

Shower and glass screen over bath

Waterproof brushed chrome downlighters

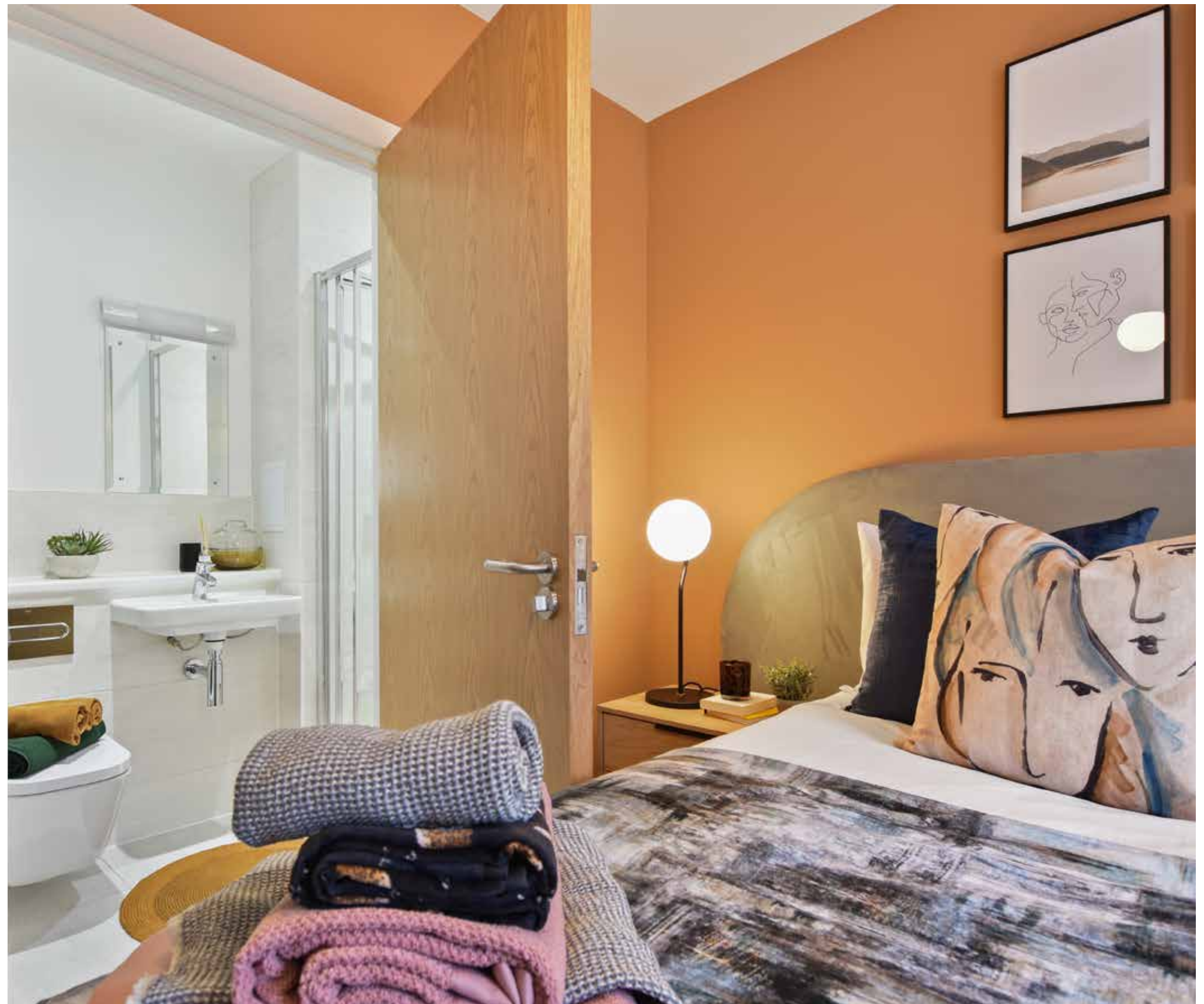
WINDOWS & DOORS

UPVC Grey windows and external doors

HOME ENTERTAINMENT & COMMUNICATION

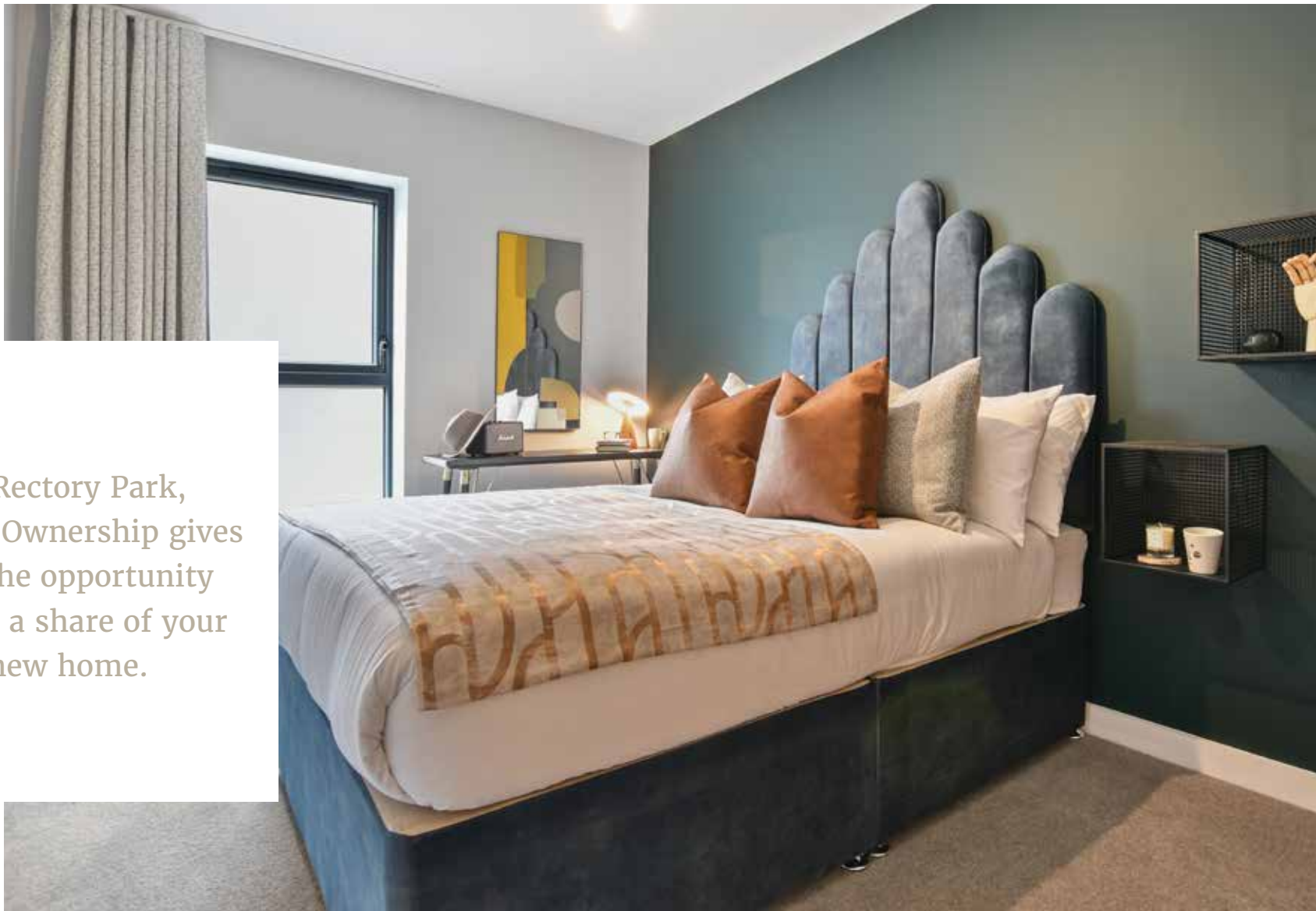
Combination sockets for TV in living room and master bedroom

Sky Q available (service subject to owners' choice of subscription & package)



We are unable to accommodate any individual changes, additions or amendments to the specification, layout or plans to any individual apartments. Your attention is drawn to the fact that it may not be possible to obtain the products as referred to in the specification. In such cases similar alternatives will be provided. Network Homes reserve the right to make these changes as required. January 2020.

Show apartment



At Rectory Park, Shared Ownership gives you the opportunity to buy a share of your new home.



[Show apartment](#)

SHARED OWNERSHIP

AT RECTORY PARK

Homes for local people

These beautiful homes at Rectory Park are available to purchase on a Shared Ownership basis, offering a perfect opportunity for local people to get a step on the property ladder. Shared Ownership helps those who want to buy a home of their own, but who can't afford the cost of buying outright.

At Rectory Park, you can buy a share of your new home. The rest is owned by Network Homes and you pay a subsidised rent on this portion in addition to your own mortgage. You will also need to have savings to cover any deposit required by your mortgage lender and the costs involved in moving.

There will also be a service charge payable to cover the cost of the communal maintenance and this includes the buildings insurance. Shared Ownership is subject to availability and qualifying criteria. Priority will be given to people living or working in the London Borough of Ealing. Every application is assessed individually.

Following the initial purchase, you have the option of increasing your share when you can afford to do so. This is called 'staircasing' which means you could eventually own all of the property. The benefit is the more you own, the less rent you pay.



RECTORY PARK SITE MAP



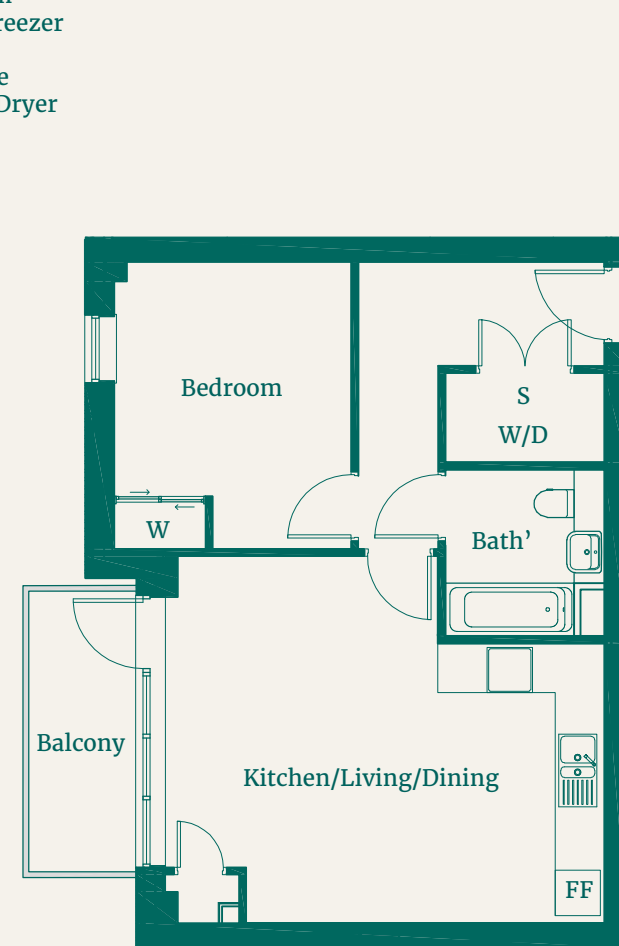
Shared Ownership London Living Rent

Development layout not to scale.

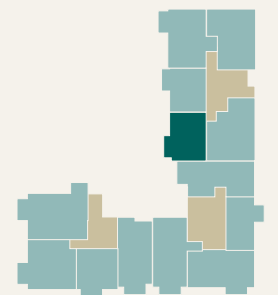


ONE BEDROOM APARTMENT
Apartments 7 • 12 • 17 • 22
First, Second, Third and Fourth Floor

- Bath' - Bathroom
- FF - Fridge Freezer
- S - Store
- W - Wardrobe
- W/D - Washer/Dryer



Apartment Location
Communal area



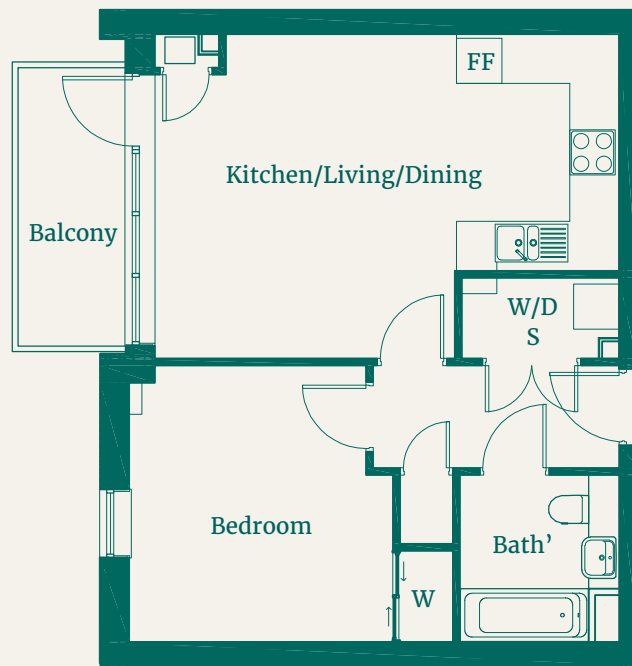
DIMENSIONS	METRES	FEET
Kitchen/Living/Dining	5.8 x 4.8	19'0" x 15'7"
Bedroom	3.1 x 3.8	10'1" x 12'5"
Bathroom	2.1 x 2.2	6'10" x 7'2"
TOTAL	53.2m²	573ft²

Point from which maximum dimensions are measured. Dimensions are intended for guidance only and may not form part of any contract, the developer reserves the right to vary as necessary to complete works. All measurements and areas may vary by approximately 5%. We operate a policy of continuous product development and features may, therefore, vary from time to time. This information does not constitute a contract, part of a contract or warranty. They are not intended to be used for carpet sizes, appliance sizes or items of furniture. All details correct as above at time of going to press January 2020.

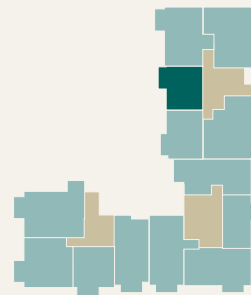


ONE BEDROOM APARTMENT
 Apartments 6 • 11 • 16 • 21
 First, Second, Third and Fourth Floor

- Bath' - Bathroom
- FF - Fridge Freezer
- S - Store
- W - Wardrobe
- W/D - Washer/Dryer



- Apartment Location
- Communal area



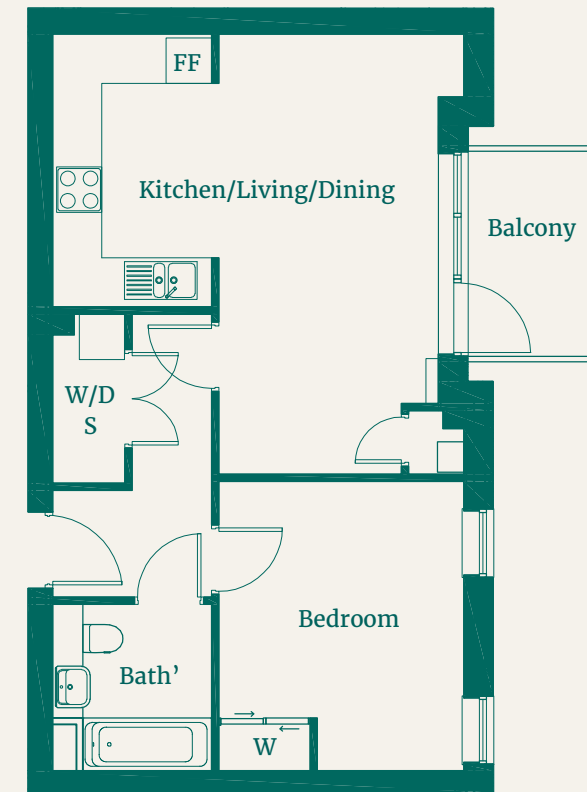
DIMENSIONS	METRES	FEET
Kitchen/Living/Dining	6.1 x 4.2	20'0" x 13'8"
Bedroom	3.6 x 3.5	11'8" x 11'5"
Bathroom	2.1 x 2.2	6'10" x 7'2"
TOTAL	50.4m²	543ft²

Point from which maximum dimensions are measured. Dimensions are intended for guidance only and may not form part of any contract, the developer reserves the right to vary as necessary to complete works. All measurements and areas may vary by approximately 5%. We operate a policy of continuous product development and features may, therefore, vary from time to time. This information does not constitute a contract, part of a contract or warranty. They are not intended to be used for carpet sizes, appliance sizes or items of furniture. All details correct as above at time of going to press January 2020.

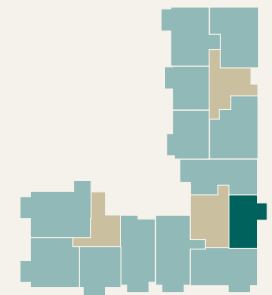


ONE BEDROOM APARTMENT
 Apartments 27 • 31 • 35 • 39 • 43
 First, Second, Third, Fourth and Fifth Floor

- Bath' - Bathroom
- FF - Fridge Freezer
- S - Store
- W - Wardrobe
- W/D - Washer/Dryer



- Apartment Location
- Communal area



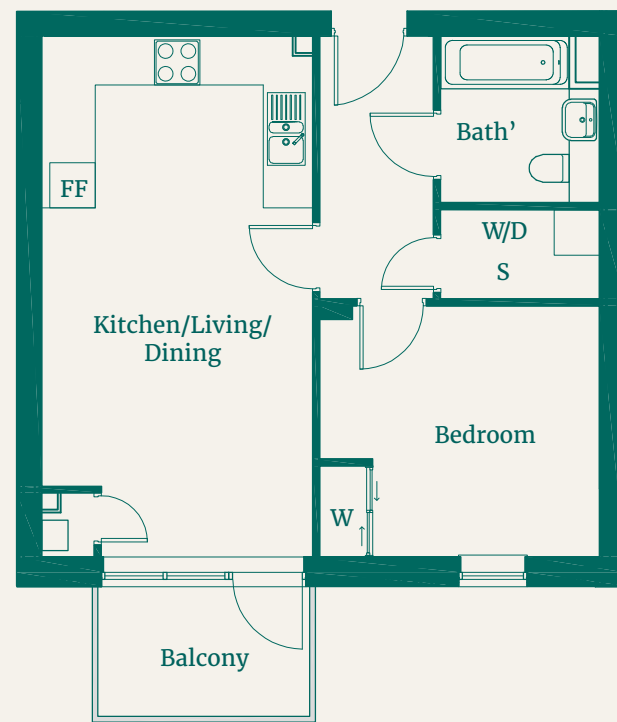
DIMENSIONS	METRES	FEET
Kitchen/Living/Dining	5.8 x 5.1	19'0" x 16'7"
Bedroom	3.8 x 3.2	12'5" x 10'5"
Bathroom	2.1 x 2.2	6'10" x 7'2"
TOTAL	51.5m²	554ft²

Point from which maximum dimensions are measured. Dimensions are intended for guidance only and may not form part of any contract, the developer reserves the right to vary as necessary to complete works. All measurements and areas may vary by approximately 5%. We operate a policy of continuous product development and features may, therefore, vary from time to time. This information does not constitute a contract, part of a contract or warranty. They are not intended to be used for carpet sizes, appliance sizes or items of furniture. All details correct as above at time of going to press January 2020.

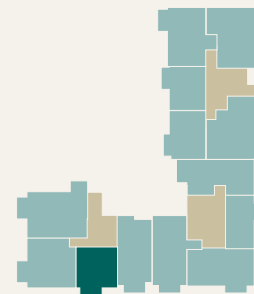


ONE BEDROOM APARTMENT
 Apartments 50 • 54 • 58 • 62
 First, Second, Third and Fourth Floor

- Bath' - Bathroom
- FF - Fridge Freezer
- S - Store
- W - Wardrobe
- W/D - Washer/Dryer



■ Apartment Location
 ■ Communal area



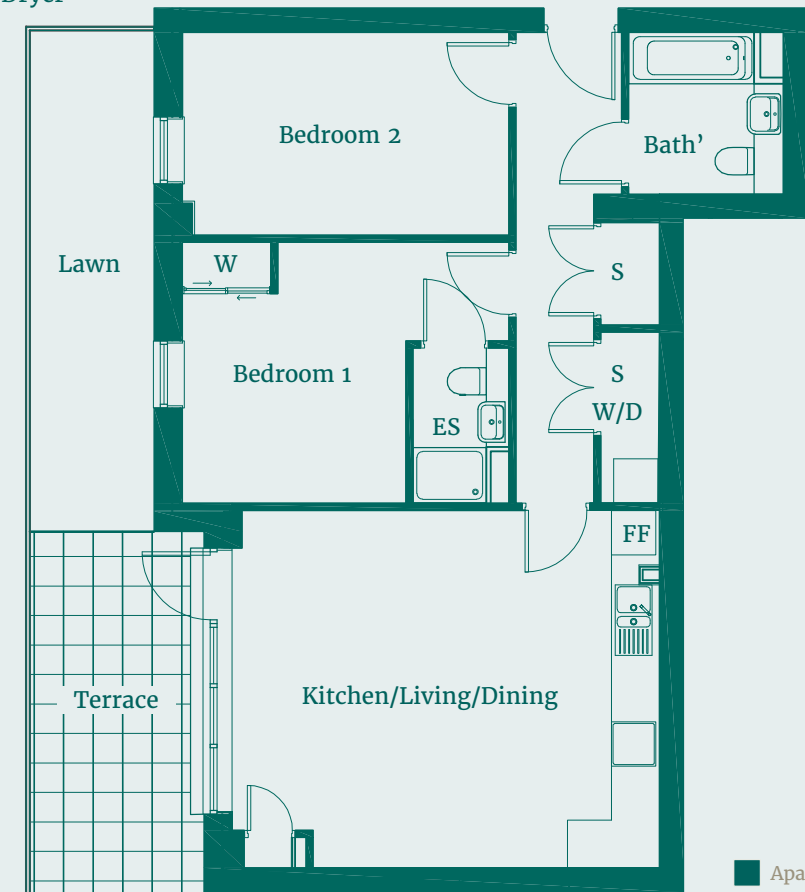
DIMENSIONS	METRES	FEET
Kitchen/Living/Dining	3.6 x 6.8	11'8" x 22'3"
Bedroom	3.3 x 3.7	10'8" x 12'1"
Bathroom	2.1 x 2.2	6'10" x 7'2"
TOTAL	50.6m²	545ft²

Point from which maximum dimensions are measured. Dimensions are intended for guidance only and may not form part of any contract, the developer reserves the right to vary as necessary to complete works. All measurements and areas may vary by approximately 5%. We operate a policy of continuous product development and features may, therefore, vary from time to time. This information does not constitute a contract, part of a contract or warranty. They are not intended to be used for carpet sizes, appliance sizes or items of furniture. All details correct as above at time of going to press January 2020.

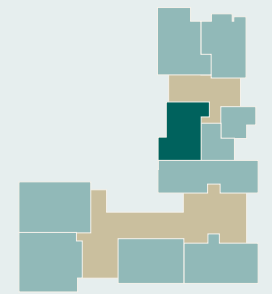


TWO BEDROOM APARTMENT
 Apartment 3
 Ground Floor

- Bath' - Bathroom
- ES - Ensuite
- FF - Fridge Freezer
- S - Store
- W - Wardrobe
- W/D - Washer/Dryer



■ Apartment Location
 ■ Communal area

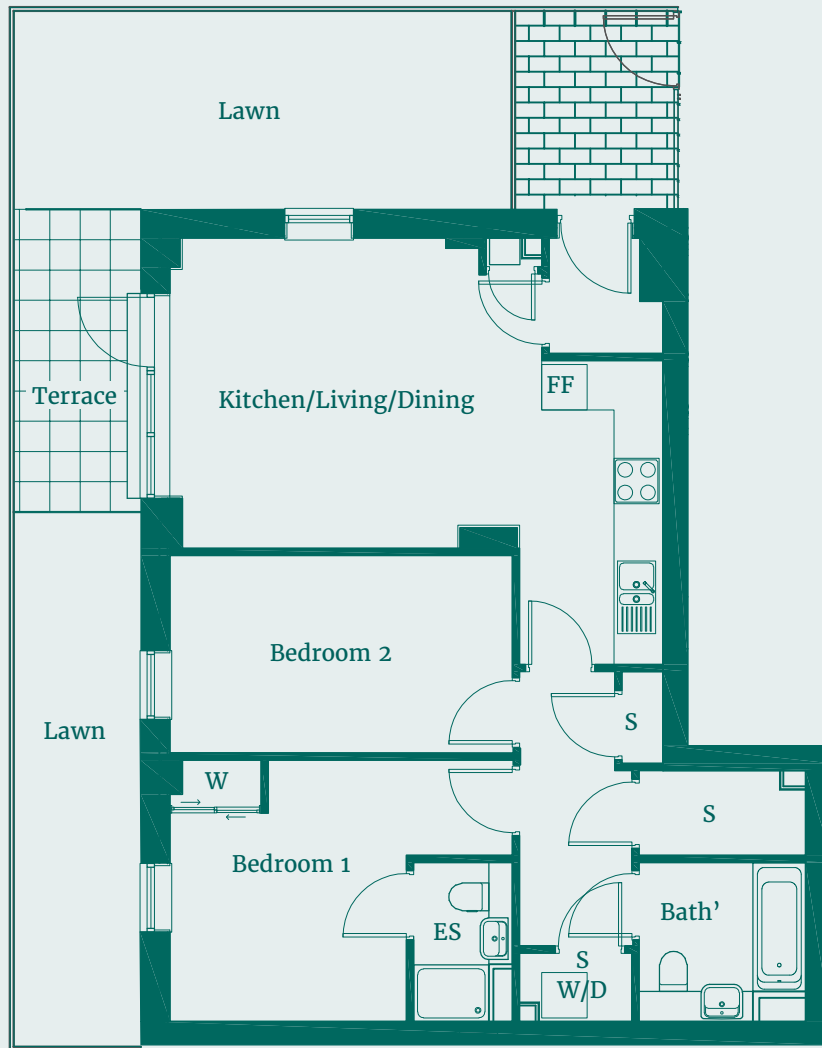


DIMENSIONS	METRES	FEET
Kitchen/Living/Dining	4.9 x 5.8	16'1" x 19'0"
Bedroom 1	3.5 x 4.4	11'5" x 14'4"
Bedroom 2	2.8 x 4.4	9'2" x 14'4"
Bathroom	2.1 x 2.2	6'10" x 7'2"
TOTAL	73.7m²	793ft²

Point from which maximum dimensions are measured. Dimensions are intended for guidance only and may not form part of any contract, the developer reserves the right to vary as necessary to complete works. All measurements and areas may vary by approximately 5%. We operate a policy of continuous product development and features may, therefore, vary from time to time. This information does not constitute a contract, part of a contract or warranty. They are not intended to be used for carpet sizes, appliance sizes or items of furniture. All details correct as above at time of going to press January 2020.



TWO BEDROOM APARTMENT
Apartment 2
Ground Floor



- Bath' - Bathroom
- ES - Ensuite
- FF - Fridge Freezer
- S - Store
- W - Wardrobe
- W/D - Washer/Dryer



- Apartment Location
- Communal area

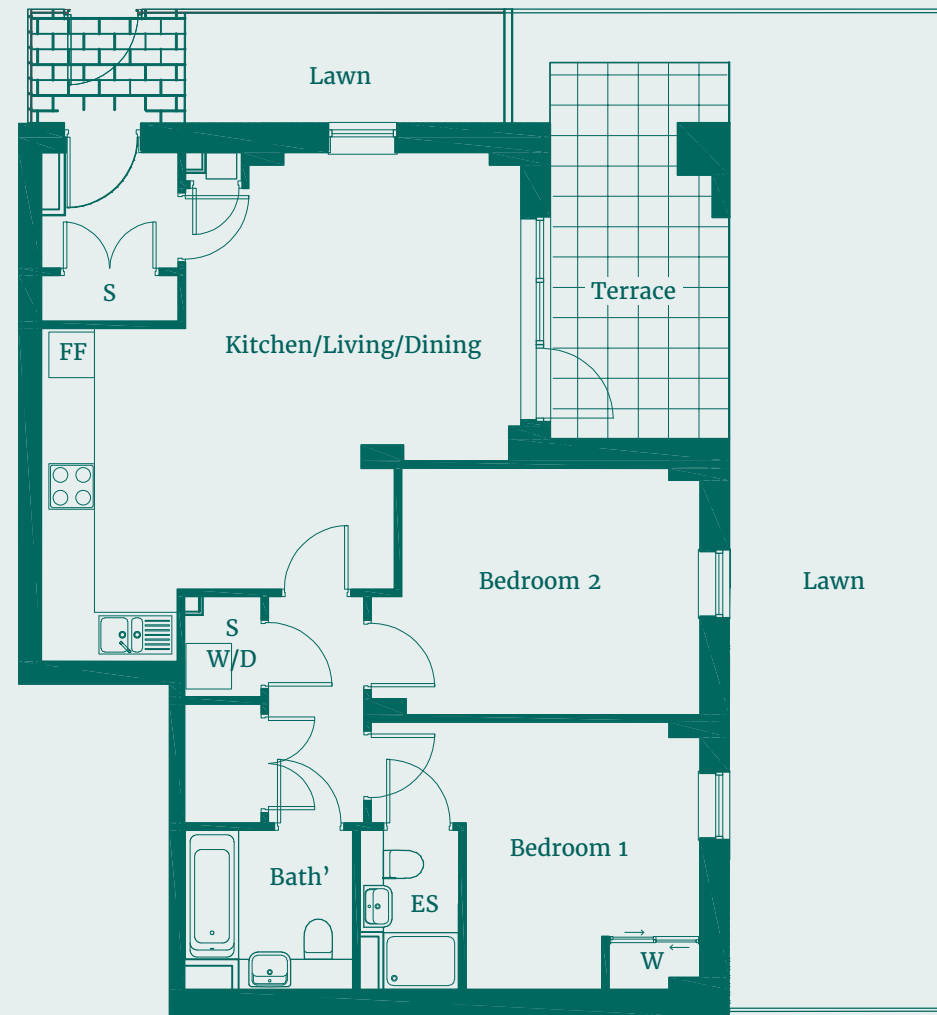


DIMENSIONS	METRES	FEET
Kitchen/Living/Dining	4.1 x 6.5	13'4" x 21'3"
Bedroom 1	3.5 x 4.5	11'5" x 14'8"
Bedroom 2	2.6 x 4.5	8'5" x 14'8"
Bathroom	2.1 x 2.2	6'10" x 7'2"
TOTAL	73.8m²	794ft²

Point from which maximum dimensions are measured. Dimensions are intended for guidance only and may not form part of any contract, the developer reserves the right to vary as necessary to complete works. All measurements and areas may vary by approximately 5%. We operate a policy of continuous product development and features may, therefore, vary from time to time. This information does not constitute a contract, part of a contract or warranty. They are not intended to be used for carpet sizes, appliance sizes or items of furniture. All details correct as above at time of going to press January 2020.



TWO BEDROOM APARTMENT
Apartment 1
Ground Floor



- Bath' - Bathroom
- ES - Ensuite
- FF - Fridge Freezer
- S - Store
- W - Wardrobe
- W/D - Washer/Dryer



- Apartment Location
- Communal area



DIMENSIONS	METRES	FEET
Kitchen/Living/Dining	6.3 x 5.8	20'7" x 19'0"
Bedroom 1	3.6 x 4.3	11'8" x 14'1"
Bedroom 2	3.3 x 4.3	10'8" x 14'1"
Bathroom	2.1 x 2.2	6'10" x 7'2"
TOTAL	77.6m²	835ft²

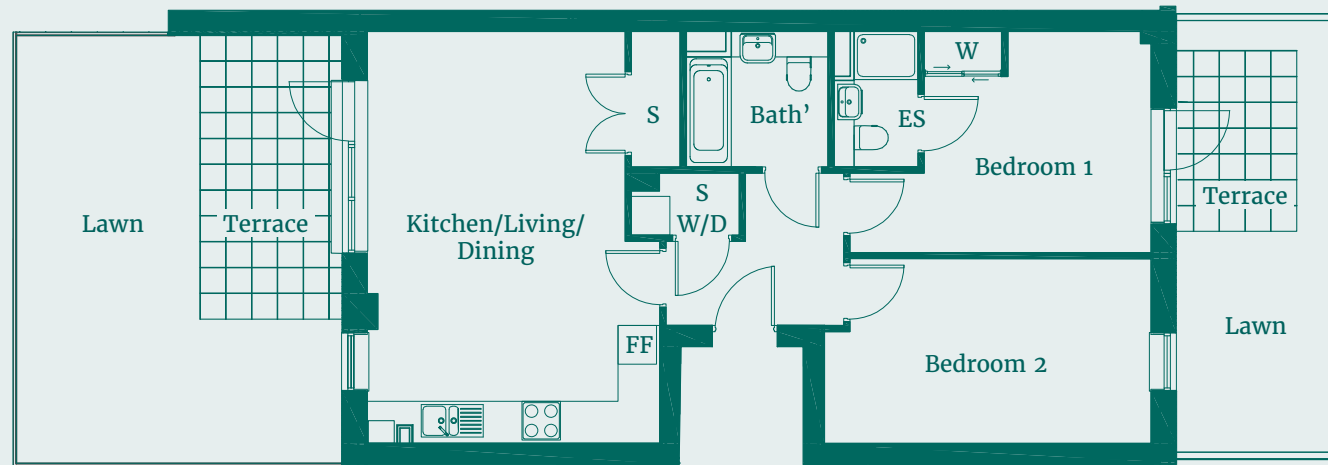
Point from which maximum dimensions are measured. Dimensions are intended for guidance only and may not form part of any contract, the developer reserves the right to vary as necessary to complete works. All measurements and areas may vary by approximately 5%. We operate a policy of continuous product development and features may, therefore, vary from time to time. This information does not constitute a contract, part of a contract or warranty. They are not intended to be used for carpet sizes, appliance sizes or items of furniture. All details correct as above at time of going to press January 2020.



TWO BEDROOM APARTMENT

Apartment 24
Ground Floor

- Bath' - Bathroom
- ES - Ensuite
- FF - Fridge Freezer
- S - Store
- W - Wardrobe
- W/D - Washer/Dryer



- Apartment Location
- Communal area

DIMENSIONS	METRES	FEET
Kitchen/Living/Dining	6.4 x 4.5	13'4" x 21'3"
Bedroom 1	3.4 x 4.7	11'1" x 15'4"
Bedroom 2	2.8 x 5.1	9'2" x 16'7"
Bathroom	2.1 x 2.2	6'10" x 7'2"
TOTAL	72.9m²	785ft²



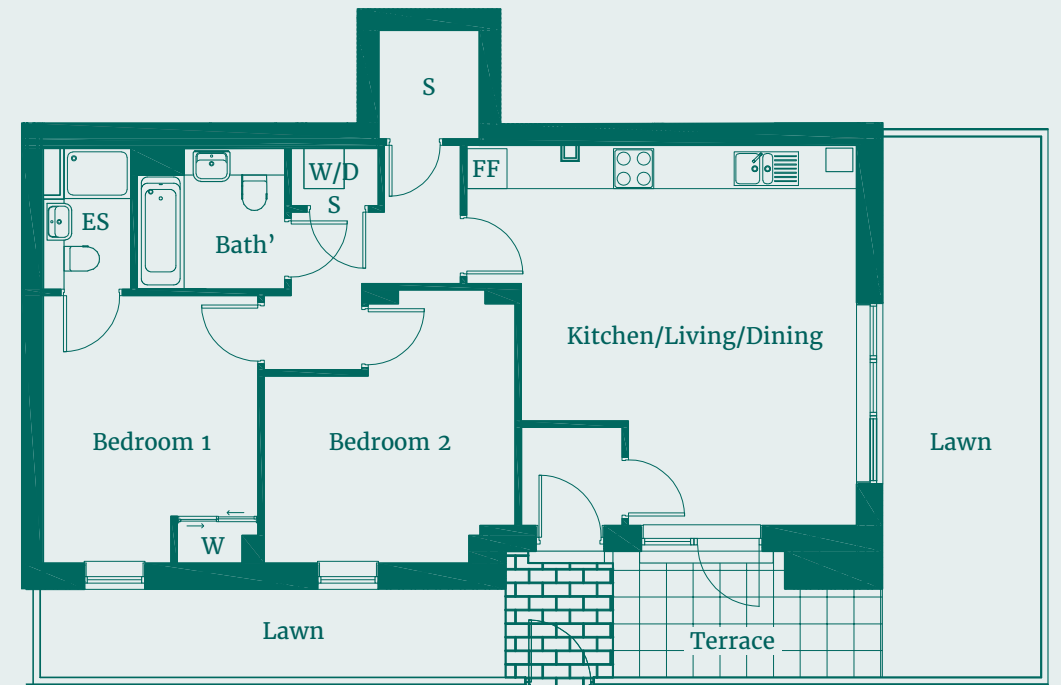
Point from which maximum dimensions are measured. Dimensions are intended for guidance only and may not form part of any contract, the developer reserves the right to vary as necessary to complete works. All measurements and areas may vary by approximately 5%. We operate a policy of continuous product development and features may, therefore, vary from time to time. This information does not constitute a contract, part of a contract or warranty. They are not intended to be used for carpet sizes, appliance sizes or items of furniture. All details correct as above at time of going to press January 2020.



TWO BEDROOM APARTMENT

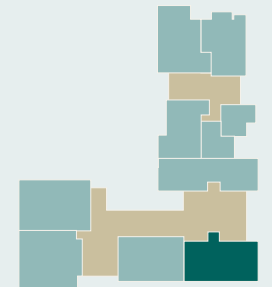
Apartment 25
Ground Floor

- Bath' - Bathroom
- ES - Ensuite
- FF - Fridge Freezer
- S - Store
- W - Wardrobe
- W/D - Washer/Dryer



- Apartment Location
- Communal area

DIMENSIONS	METRES	FEET
Kitchen/Living/Dining	5.0 x 5.8	16'4" x 19'0"
Bedroom 1	4.1 x 3.2	13'4" x 10'5"
Bedroom 2	3.2 x 4.0	10'5" x 13'1"
Bathroom	2.1 x 2.2	6'10" x 7'2"
TOTAL	75.8m²	816ft²



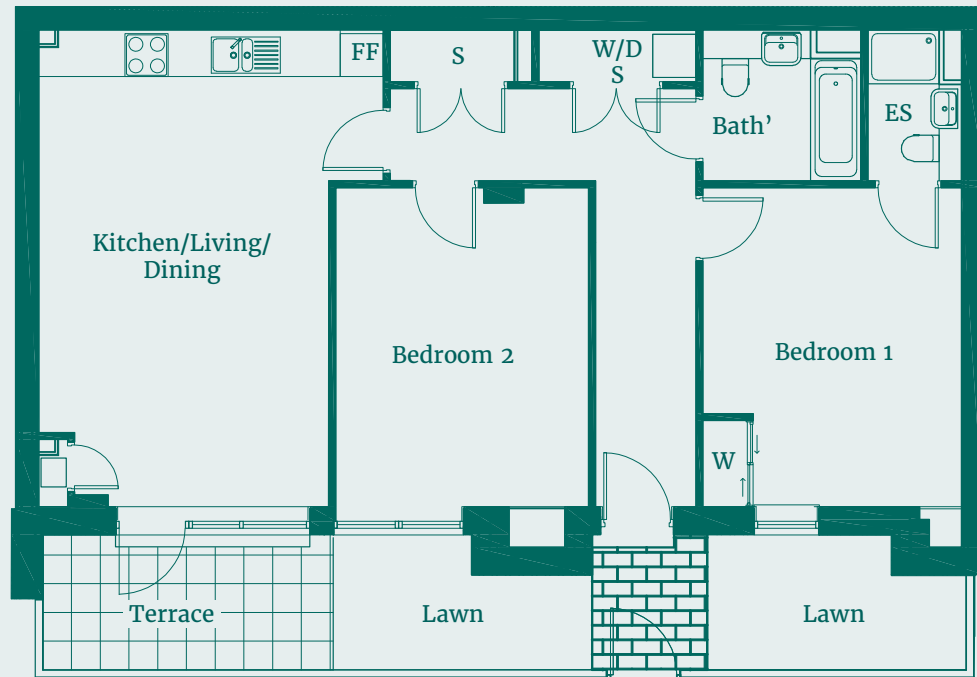
Point from which maximum dimensions are measured. Dimensions are intended for guidance only and may not form part of any contract, the developer reserves the right to vary as necessary to complete works. All measurements and areas may vary by approximately 5%. We operate a policy of continuous product development and features may, therefore, vary from time to time. This information does not constitute a contract, part of a contract or warranty. They are not intended to be used for carpet sizes, appliance sizes or items of furniture. All details correct as above at time of going to press January 2020.



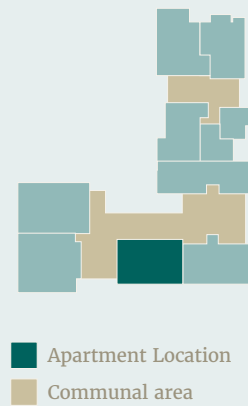
TWO BEDROOM APARTMENT

Apartment 46
Ground Floor

- Bath' - Bathroom
- ES - Ensuite
- FF - Fridge Freezer
- S - Store
- W - Wardrobe
- W/D - Washer/Dryer



DIMENSIONS	METRES	FEET
Kitchen/Living/Dining	6.6 x 4.0	21'7" x 13'1"
Bedroom 1	3.6 x 4.4	11'8" x 14'4"
Bedroom 2	4.4 x 3.5	14'4" x 11'5"
Bathroom	2.1 x 2.2	6'10" x 7'2"
TOTAL	73.7m²	794ft²



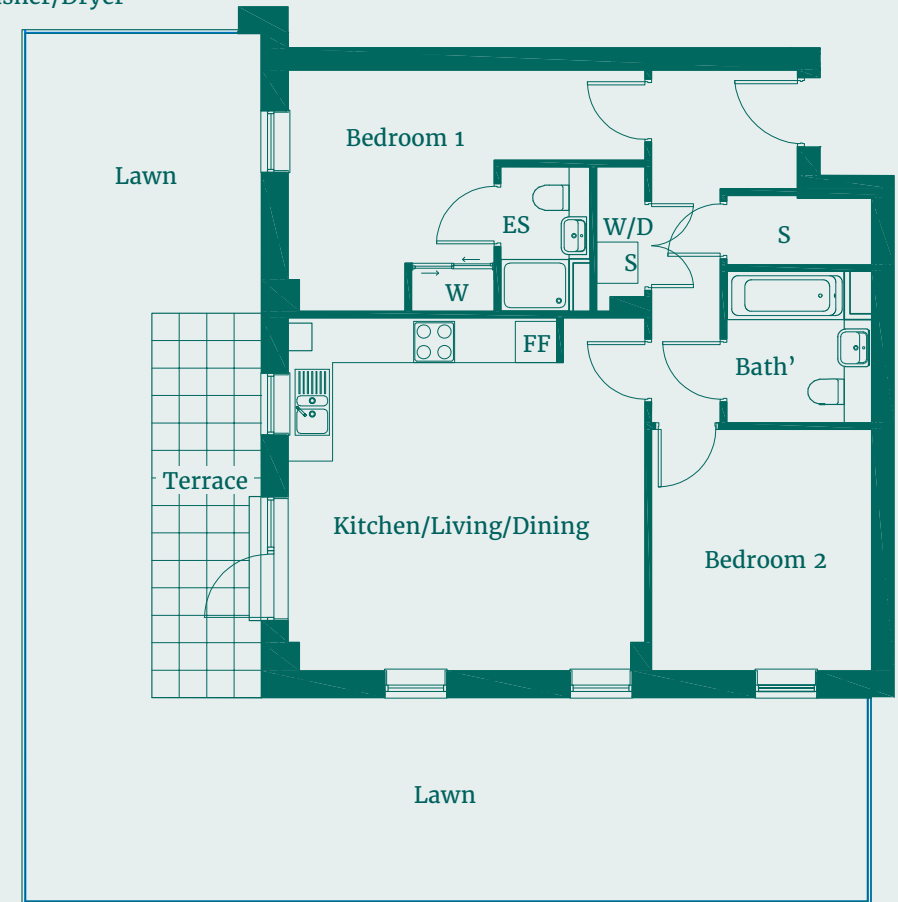
Point from which maximum dimensions are measured. Dimensions are intended for guidance only and may not form part of any contract, the developer reserves the right to vary as necessary to complete works. All measurements and areas may vary by approximately 5%. We operate a policy of continuous product development and features may, therefore, vary from time to time. This information does not constitute a contract, part of a contract or warranty. They are not intended to be used for carpet sizes, appliance sizes or items of furniture. All details correct as above at time of going to press January 2020.



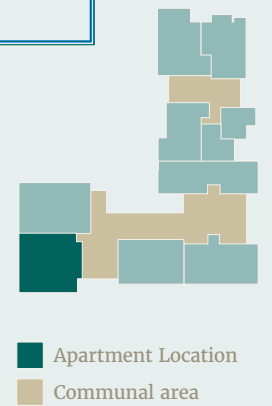
TWO BEDROOM APARTMENT

Apartment 47
Ground Floor

- Bath' - Bathroom
- ES - Ensuite
- FF - Fridge Freezer
- S - Store
- W - Wardrobe
- W/D - Washer/Dryer



DIMENSIONS	METRES	FEET
Kitchen/Living/Dining	5.2 x 5.1	17'0" x 16'7"
Bedroom 1	3.5 x 5.1	11'5" x 16'7"
Bedroom 2	3.5 x 3.2	11'5" x 10'5"
Bathroom	2.1 x 2.2	6'10" x 7'2"
TOTAL	72.4m²	779ft²

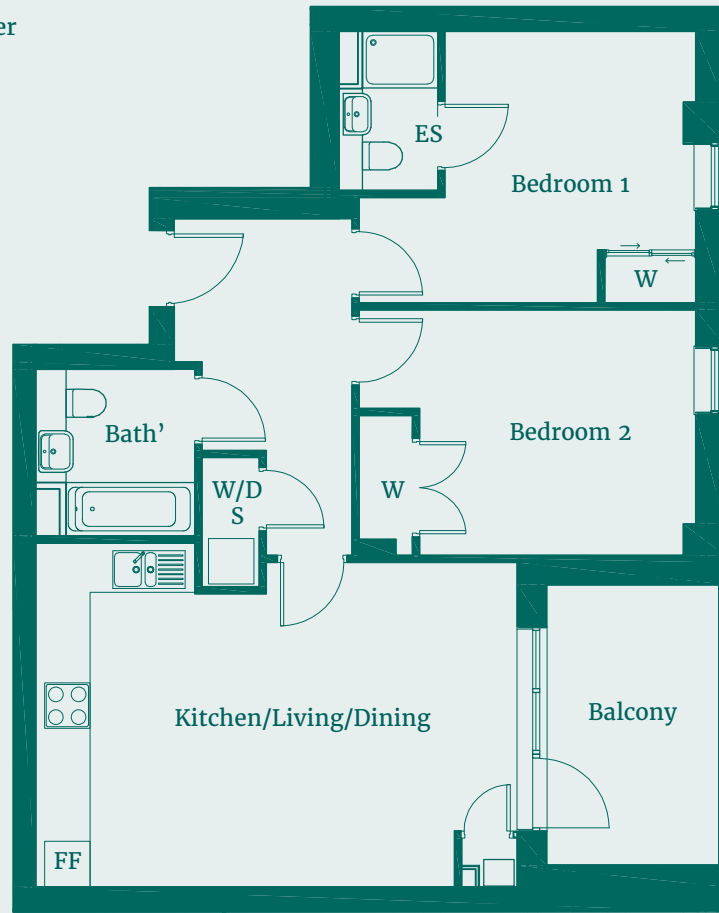


Point from which maximum dimensions are measured. Dimensions are intended for guidance only and may not form part of any contract, the developer reserves the right to vary as necessary to complete works. All measurements and areas may vary by approximately 5%. We operate a policy of continuous product development and features may, therefore, vary from time to time. This information does not constitute a contract, part of a contract or warranty. They are not intended to be used for carpet sizes, appliance sizes or items of furniture. All details correct as above at time of going to press January 2020.

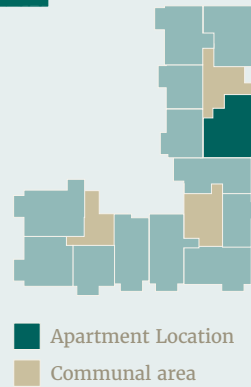


TWO BEDROOM APARTMENT
 Apartments 8 • 13 • 18 • 23
 First, Second, Third and Fourth Floor

- Bath' - Bathroom
- ES - Ensuite
- FF - Fridge Freezer
- S - Store
- W - Wardrobe
- W/D - Washer/Dryer



DIMENSIONS	METRES	FEET
Kitchen/Living/Dining	4.5 x 6.4	14'8" x 21'0"
Bedroom 1	3.6 x 4.4	11'8" x 14'4"
Bedroom 2	3.2 x 4.4	10'5" x 14'4"
Bathroom	2.1 x 2.2	6'10" x 7'2"
TOTAL	74.7m²	804ft²

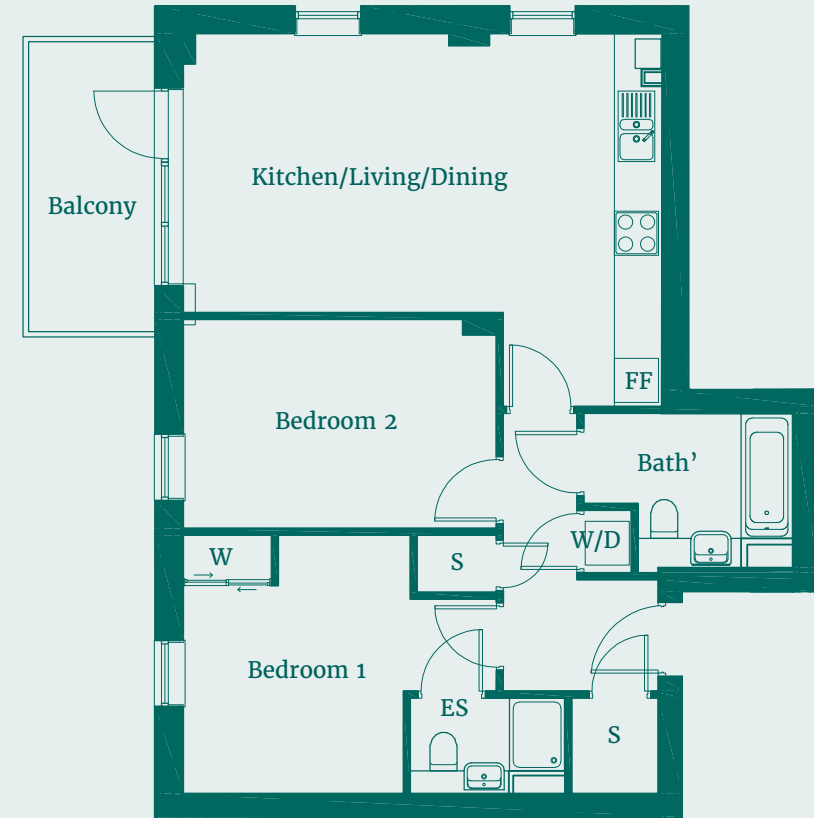


Point from which maximum dimensions are measured. Dimensions are intended for guidance only and may not form part of any contract, the developer reserves the right to vary as necessary to complete works. All measurements and areas may vary by approximately 5%. We operate a policy of continuous product development and features may, therefore, vary from time to time. This information does not constitute a contract, part of a contract or warranty. They are not intended to be used for carpet sizes, appliance sizes or items of furniture. All details correct as above at time of going to press January 2020.

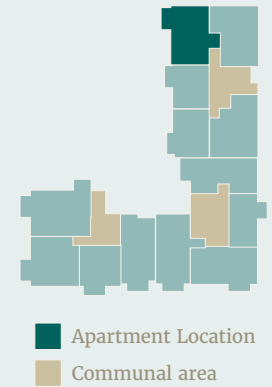


TWO BEDROOM APARTMENT
 Apartments 5 • 10 • 15 • 20
 First, Second, Third and Fourth Floor

- Bath' - Bathroom
- ES - Ensuite
- FF - Fridge Freezer
- S - Store
- W - Wardrobe
- W/D - Washer/Dryer



DIMENSIONS	METRES	FEET
Kitchen/Living/Dining	6.5 x 5.0	21'3" x 16'4"
Bedroom 1	3.5 x 4.2	11'5" x 13'8"
Bedroom 2	2.8 x 4.2	9'2" x 13'8"
Bathroom	2.8 x 2.2	9'2" x 7'2"
TOTAL	71.2m²	766ft²

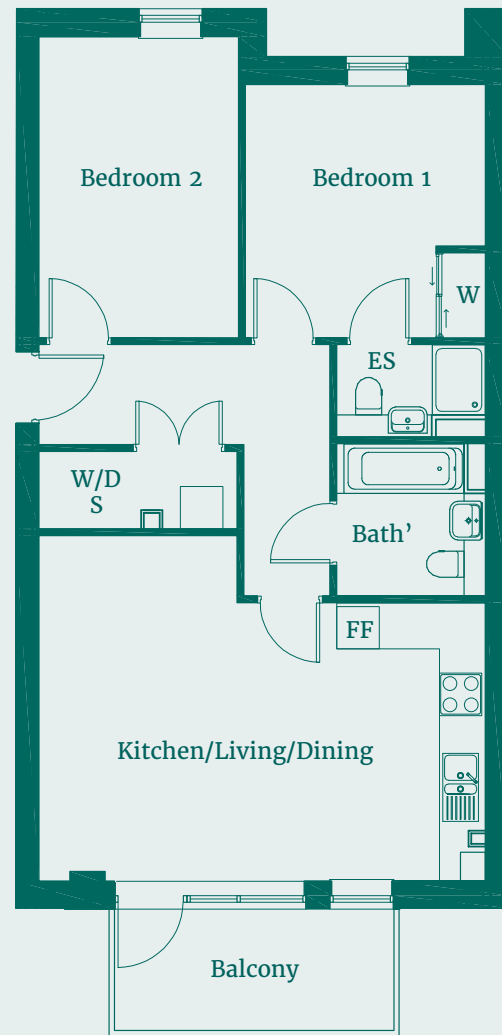


Point from which maximum dimensions are measured. Dimensions are intended for guidance only and may not form part of any contract, the developer reserves the right to vary as necessary to complete works. All measurements and areas may vary by approximately 5%. We operate a policy of continuous product development and features may, therefore, vary from time to time. This information does not constitute a contract, part of a contract or warranty. They are not intended to be used for carpet sizes, appliance sizes or items of furniture. All details correct as above at time of going to press January 2020.

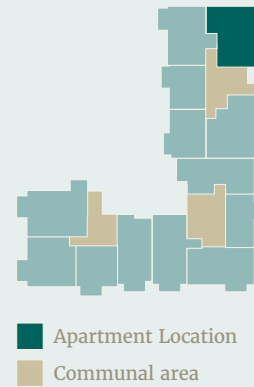


TWO BEDROOM APARTMENT
 Apartments 4 • 9 • 14 • 19
 First, Second, Third and Fourth Floor

- Bath' - Bathroom
- ES - Ensuite
- FF - Fridge Freezer
- S - Store
- W - Wardrobe
- W/D - Washer/Dryer



DIMENSIONS	METRES	FEET
Kitchen/Living/Dining	4.8 x 6.3	21'3" x 12'5"
Bedroom 1	3.5 x 4.4	11'5" x 13'8"
Bedroom 2	3.2 x 4.4	9'2" x 13'8"
Bathroom	2.1 x 2.2	6'10" x 7'2"
TOTAL	74.6m²	803ft²

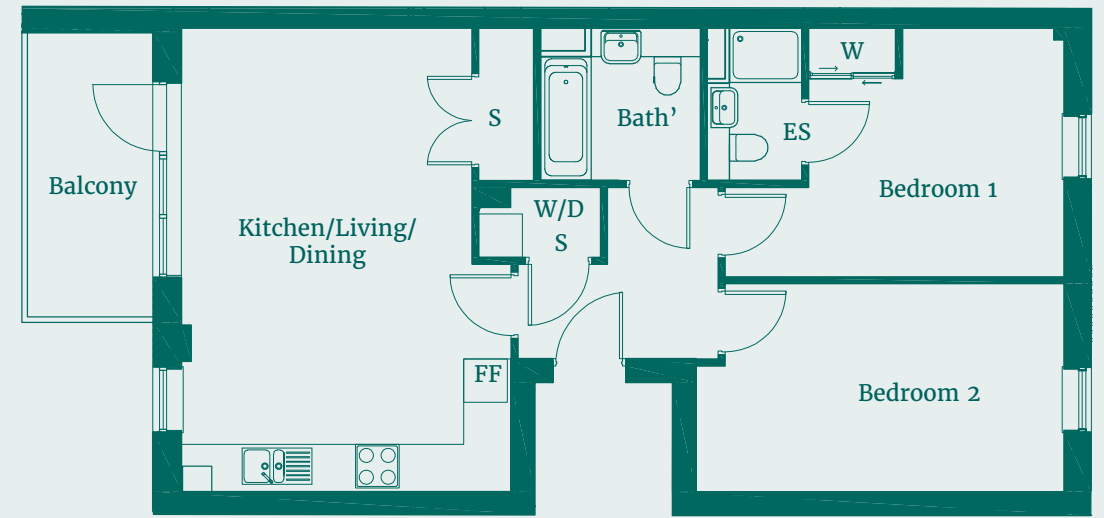


Point from which maximum dimensions are measured. Dimensions are intended for guidance only and may not form part of any contract, the developer reserves the right to vary as necessary to complete works. All measurements and areas may vary by approximately 5%. We operate a policy of continuous product development and features may, therefore, vary from time to time. This information does not constitute a contract, part of a contract or warranty. They are not intended to be used for carpet sizes, appliance sizes or items of furniture. All details correct as above at time of going to press January 2020.

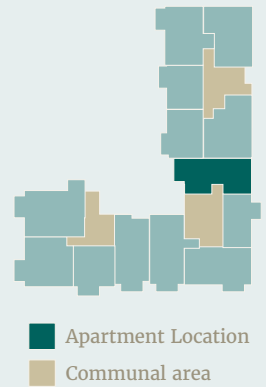


TWO BEDROOM APARTMENT
 Apartments 26 • 30 • 34 • 38 • 42
 First, Second, Third, Fourth and Fifth Floor

- Bath' - Bathroom
- ES - Ensuite
- FF - Fridge Freezer
- S - Store
- W - Wardrobe
- W/D - Washer/Dryer



DIMENSIONS	METRES	FEET
Kitchen/Living/Dining	6.4 x 4.6	21'0" x 15'1"
Bedroom 1	3.4 x 4.6	11'2" x 15'1"
Bedroom 2	2.9 x 4.6	9'6" x 15'1"
Bathroom	2.1 x 2.2	6'10" x 7'2"
TOTAL	72.9m²	785ft²

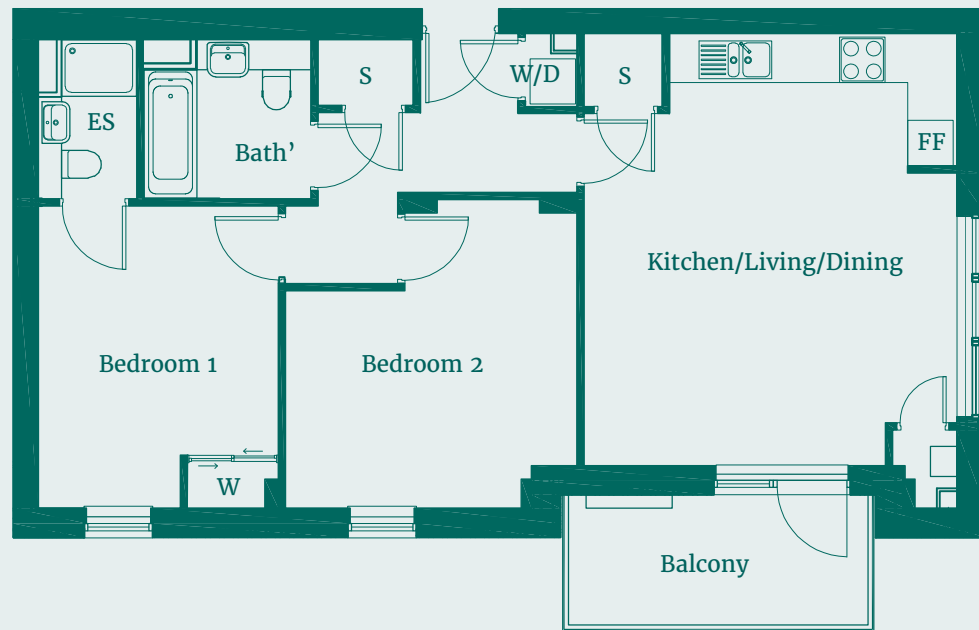


Point from which maximum dimensions are measured. Dimensions are intended for guidance only and may not form part of any contract, the developer reserves the right to vary as necessary to complete works. All measurements and areas may vary by approximately 5%. We operate a policy of continuous product development and features may, therefore, vary from time to time. This information does not constitute a contract, part of a contract or warranty. They are not intended to be used for carpet sizes, appliance sizes or items of furniture. All details correct as above at time of going to press January 2020.

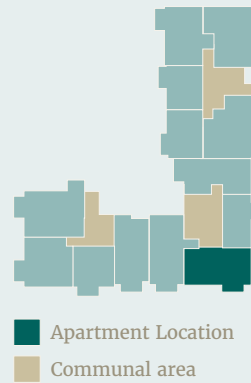


TWO BEDROOM APARTMENT
 Apartments 28 • 32 • 36 • 40 • 44
 First, Second, Third, Fourth and Fifth Floor

- Bath' - Bathroom
- ES - Ensuite
- FF - Fridge Freezer
- S - Store
- W - Wardrobe
- W/D - Washer/Dryer



DIMENSIONS	METRES	FEET
Kitchen/Living/Dining	5.7 x 4.9	18'7" x 16'1"
Bedroom 1	4.0 x 3.2	13'1" x 10'5"
Bedroom 2	3.8 x 4.0	12'5" x 13'1"
Bathroom	2.1 x 2.2	6'10" x 7'2"
TOTAL	73.4m²	790ft²

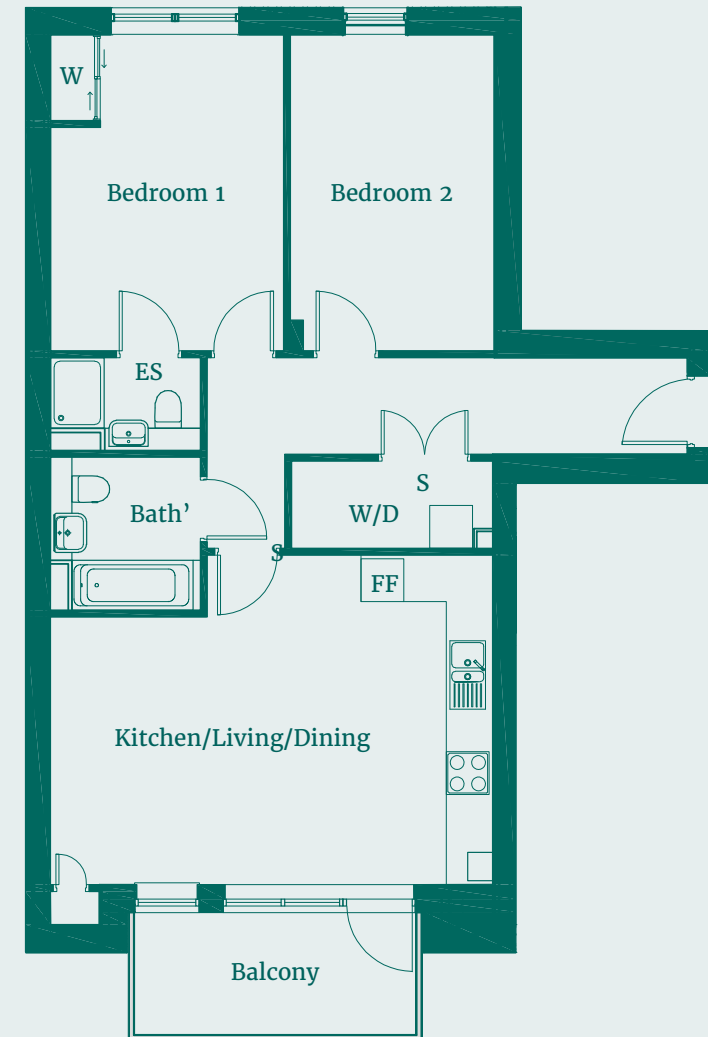


Point from which maximum dimensions are measured. Dimensions are intended for guidance only and may not form part of any contract, the developer reserves the right to vary as necessary to complete works. All measurements and areas may vary by approximately 5%. We operate a policy of continuous product development and features may, therefore, vary from time to time. This information does not constitute a contract, part of a contract or warranty. They are not intended to be used for carpet sizes, appliance sizes or items of furniture. All details correct as above at time of going to press January 2020.

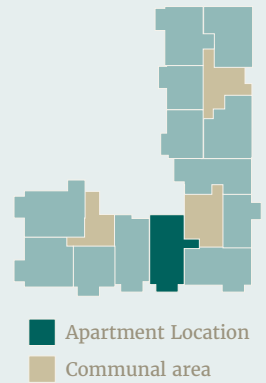


TWO BEDROOM APARTMENT
 Apartments 29 • 33 • 37 • 41 • 45
 First, Second, Third, Fourth and Fifth Floor

- Bath' - Bathroom
- ES - Ensuite
- FF - Fridge Freezer
- S - Store
- W - Wardrobe
- W/D - Washer/Dryer



DIMENSIONS	METRES	FEET
Kitchen/Living/Dining	4.6 x 6.2	15'1" x 20'3"
Bedroom 1	3.3 x 4.4	10'8" x 14'4"
Bedroom 2	2.9 x 4.4	9'5" x 14'4"
Bathroom	2.1 x 2.2	6'10" x 7'2"
TOTAL	78.2m²	842ft²

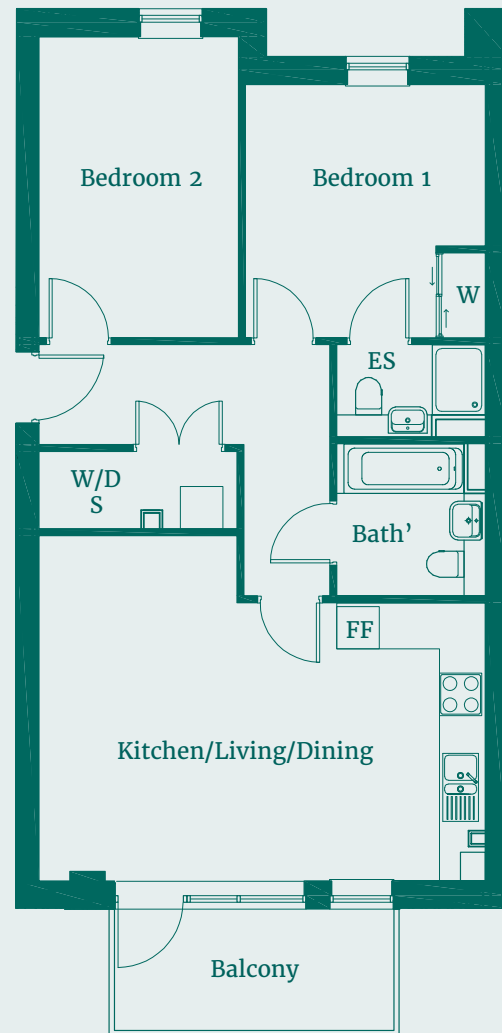


Point from which maximum dimensions are measured. Dimensions are intended for guidance only and may not form part of any contract, the developer reserves the right to vary as necessary to complete works. All measurements and areas may vary by approximately 5%. We operate a policy of continuous product development and features may, therefore, vary from time to time. This information does not constitute a contract, part of a contract or warranty. They are not intended to be used for carpet sizes, appliance sizes or items of furniture. All details correct as above at time of going to press January 2020.

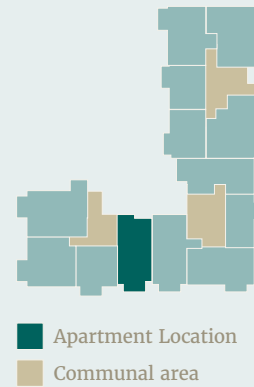


TWO BEDROOM APARTMENT
 Apartments 49 • 53 • 57 • 61
 First, Second, Third and Fourth Floor

- Bath' - Bathroom
- ES - Ensuite
- FF - Fridge Freezer
- S - Store
- W - Wardrobe
- W/D - Washer/Dryer



DIMENSIONS	METRES	FEET
Kitchen/Living/Dining	6.3 x 4.9	20'7" x 16'1"
Bedroom 1	3.6 x 3.4	11'8" x 11'2"
Bedroom 2	4.2 x 2.8	13'8" x 9'2"
Bathroom	2.1 x 2.2	6'10" x 7'2"
TOTAL	72.9m²	785ft²

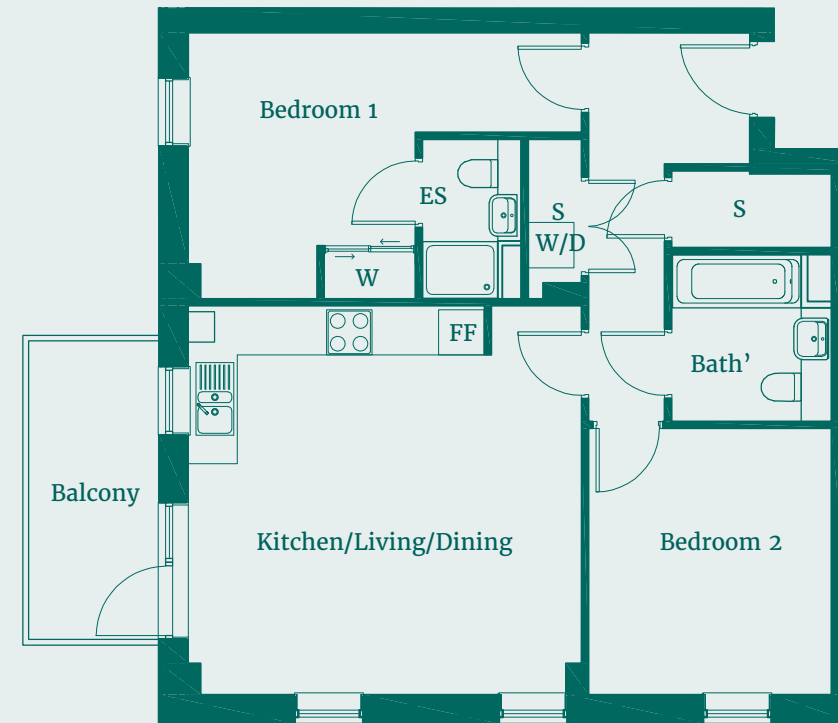


Point from which maximum dimensions are measured. Dimensions are intended for guidance only and may not form part of any contract, the developer reserves the right to vary as necessary to complete works. All measurements and areas may vary by approximately 5%. We operate a policy of continuous product development and features may, therefore, vary from time to time. This information does not constitute a contract, part of a contract or warranty. They are not intended to be used for carpet sizes, appliance sizes or items of furniture. All details correct as above at time of going to press January 2020.

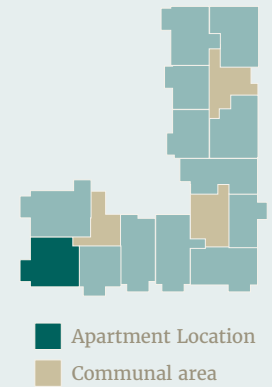


TWO BEDROOM APARTMENT
 Apartments 51 • 55 • 59
 First, Second and Third Floor

- Bath' - Bathroom
- ES - Ensuite
- FF - Fridge Freezer
- S - Store
- W - Wardrobe
- W/D - Washer/Dryer



DIMENSIONS	METRES	FEET
Kitchen/Living/Dining	5.2 x 5.0	17'1" x 16'4"
Bedroom 1	3.5 x 5.1	11'5" x 16'7"
Bedroom 2	3.5 x 3.2	11'5" x 10'5"
Bathroom	2.1 x 2.2	6'10" x 7'2"
TOTAL	72.4m²	779ft²



Point from which maximum dimensions are measured. Dimensions are intended for guidance only and may not form part of any contract, the developer reserves the right to vary as necessary to complete works. All measurements and areas may vary by approximately 5%. We operate a policy of continuous product development and features may, therefore, vary from time to time. This information does not constitute a contract, part of a contract or warranty. They are not intended to be used for carpet sizes, appliance sizes or items of furniture. All details correct as above at time of going to press January 2020.



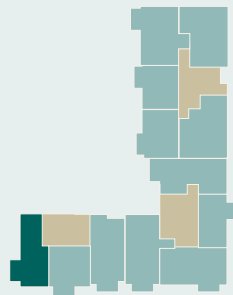
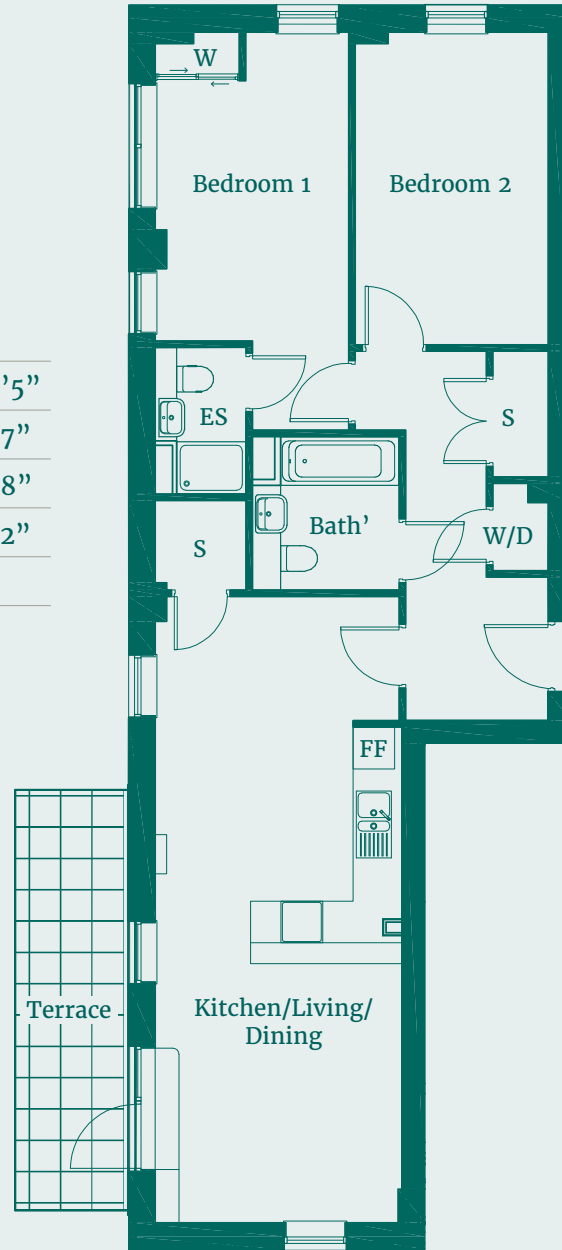
TWO BEDROOM APARTMENT

Apartment 63
Fourth Floor

- Bath' - Bathroom
- ES - Ensuite
- FF - Fridge Freezer
- S - Store
- W - Wardrobe
- W/D - Washer/Dryer



DIMENSIONS	METRES	FEET
Kitchen/Living/Dining	9.0 x 3.5	29'5" x 11'5"
Bedroom 1	2.8 x 5.7	9'2" x 18'7"
Bedroom 2	2.8 x 4.5	9'2" x 14'8"
Bathroom	2.1 x 2.2	6'10" x 7'2"
TOTAL	81.3m²	875ft²



■ Apartment Location
■ Communal area

Point from which maximum dimensions are measured. Dimensions are intended for guidance only and may not form part of any contract, the developer reserves the right to vary as necessary to complete works. All measurements and areas may vary by approximately 5%. We operate a policy of continuous product development and features may, therefore, vary from time to time. This information does not constitute a contract, part of a contract or warranty. They are not intended to be used for carpet sizes, appliance sizes or items of furniture. All details correct as above at time of going to press January 2020.



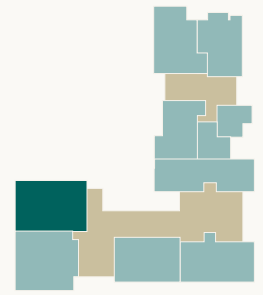
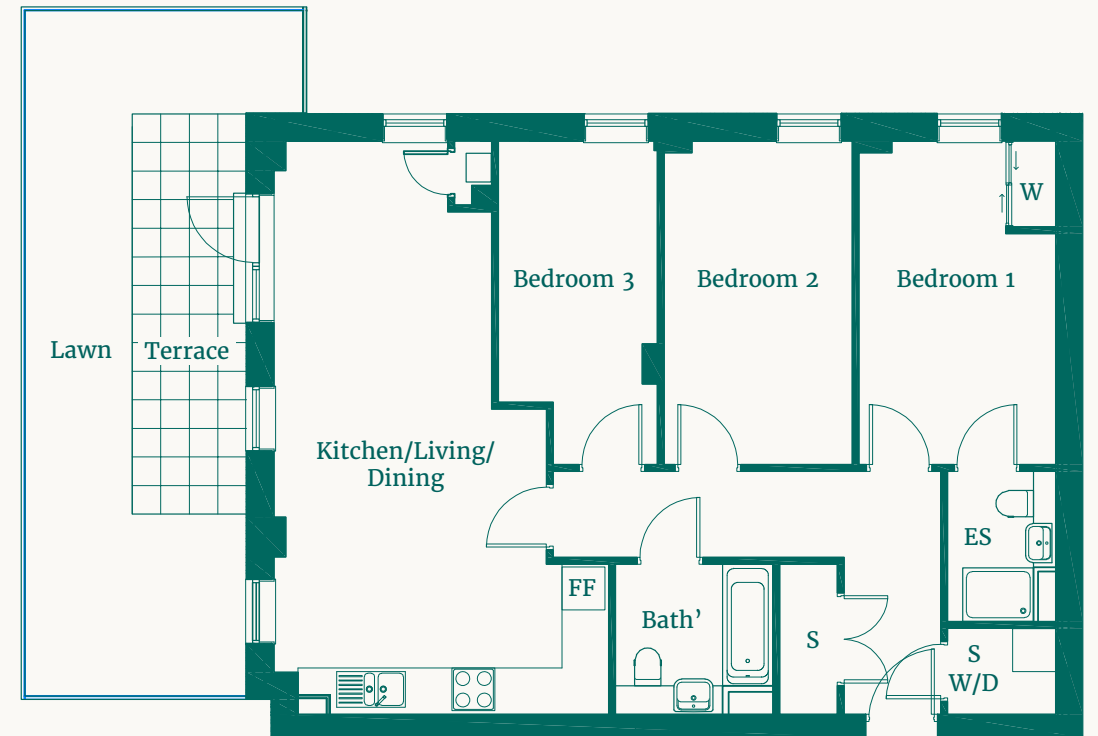
THREE BEDROOM APARTMENT

Apartment 48
Ground Floor

- Bath' - Bathroom
- ES - Ensuite
- FF - Fridge Freezer
- S - Store
- W - Wardrobe
- W/D - Washer/Dryer



DIMENSIONS	METRES	FEET
Kitchen/Living/Dining	8.0 x 4.6	26'2" x 15'1"
Bedroom 1	2.7 x 4.5	8'9" x 14'8"
Bedroom 2	2.6 x 4.5	8'5" x 14'8"
Bedroom 3	2.2 x 4.5	7'2" x 14'8"
Bathroom	2.1 x 2.2	6'10" x 7'2"
TOTAL	87.5m²	942ft²



■ Apartment Location
■ Communal area

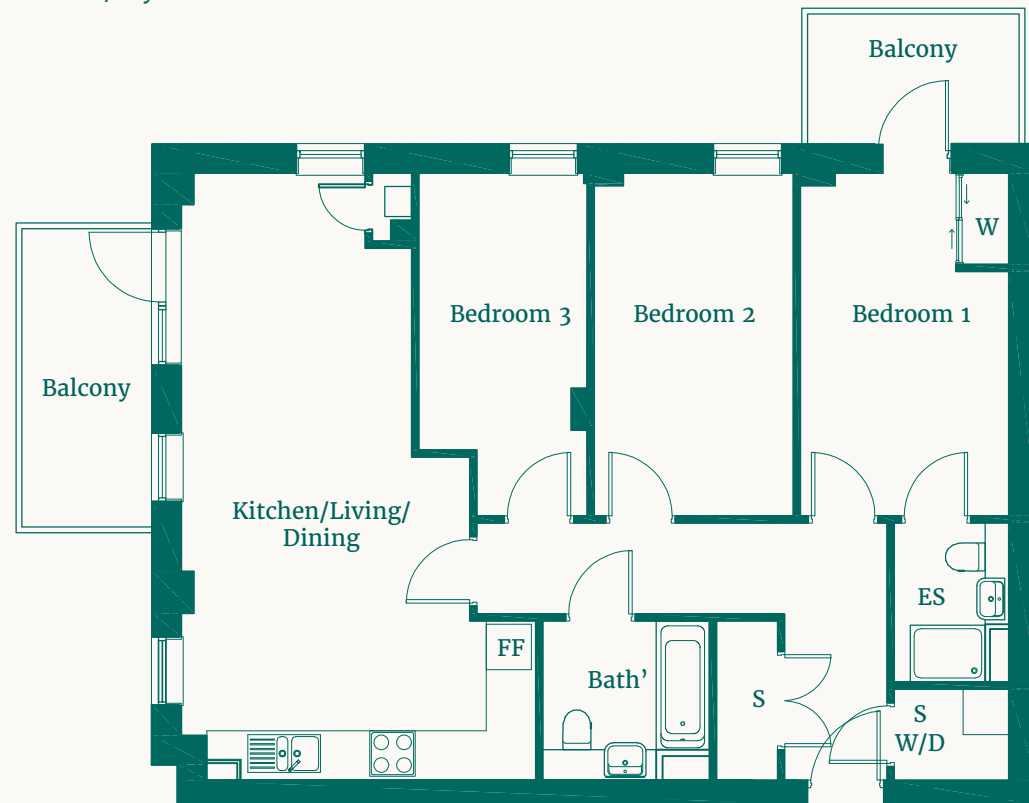
Point from which maximum dimensions are measured. Dimensions are intended for guidance only and may not form part of any contract, the developer reserves the right to vary as necessary to complete works. All measurements and areas may vary by approximately 5%. We operate a policy of continuous product development and features may, therefore, vary from time to time. This information does not constitute a contract, part of a contract or warranty. They are not intended to be used for carpet sizes, appliance sizes or items of furniture. All details correct as above at time of going to press January 2020.



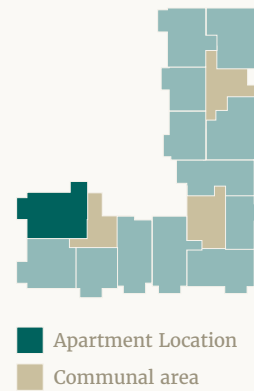
THREE BEDROOM APARTMENT

Apartments 52 • 56 • 60
First, Second and Third Floor

- Bath' - Bathroom
- ES - Ensuite
- FF - Fridge Freezer
- S - Store
- W - Wardrobe
- W/D - Washer/Dryer



DIMENSIONS	METRES	FEET
Kitchen/Living/Dining	8.0 x 4.7	26'2" x 15'4"
Bedroom 1	2.6 x 4.5	8'10" x 14'9"
Bedroom 2	2.7 x 4.5	8'9" x 14'8"
Bedroom 3	2.2 x 4.5	7'2" x 14'8"
Bathroom	2.1 x 2.2	6'10" x 7'2"
TOTAL	87.5m²	942ft²



Point from which maximum dimensions are measured. Dimensions are intended for guidance only and may not form part of any contract, the developer reserves the right to vary as necessary to complete works. All measurements and areas may vary by approximately 5%. We operate a policy of continuous product development and features may, therefore, vary from time to time. This information does not constitute a contract, part of a contract or warranty. They are not intended to be used for carpet sizes, appliance sizes or items of furniture. All details correct as above at time of going to press January 2020.



Show apartment

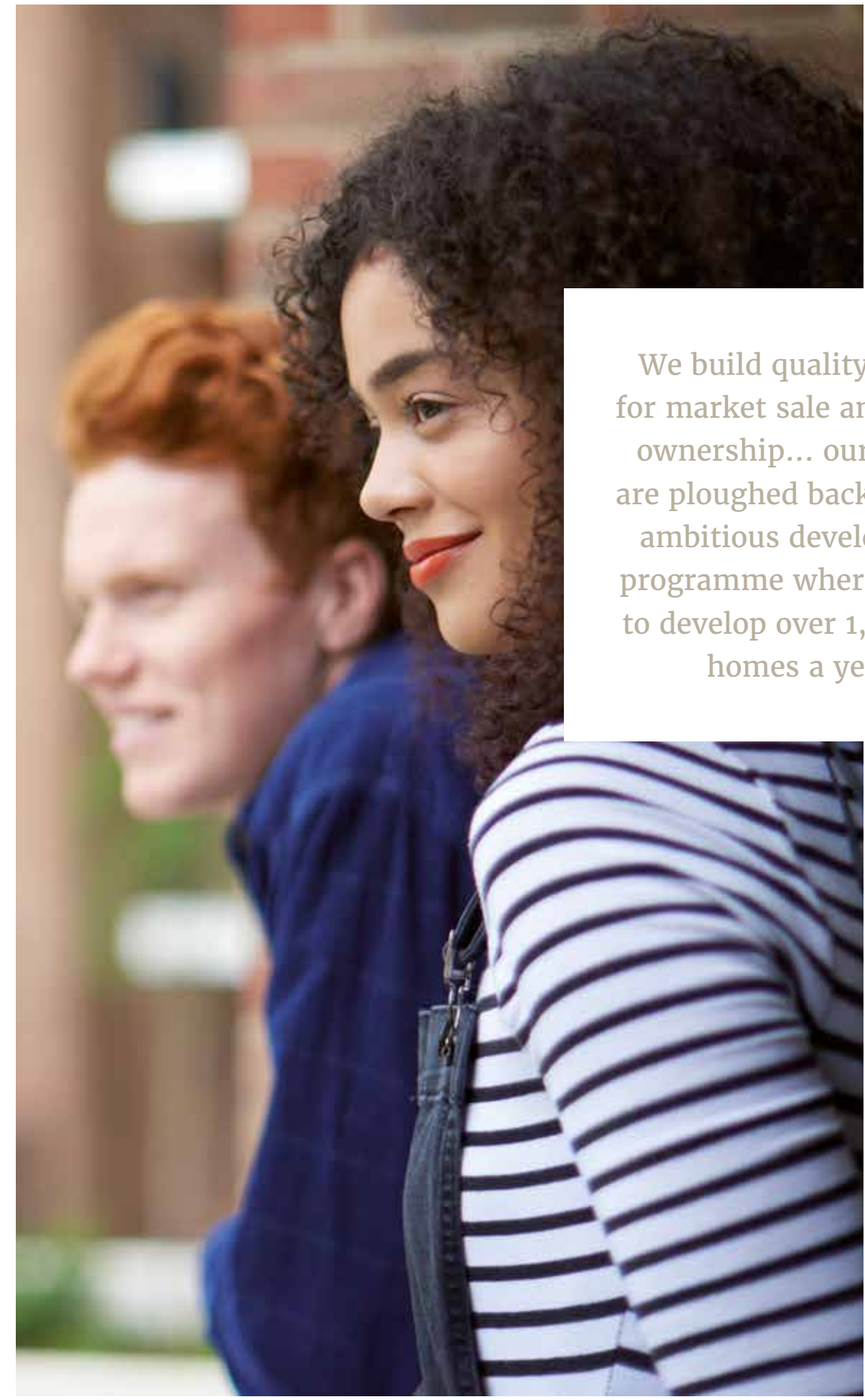
ABOUT NETWORK HOMES

LIFESTYLE

One of the leading housing associations in the country

Award winning Network Homes is one of the leading housing association developers in the country. We love to build and we take great pride in the quality of the homes we deliver. We are one of the leading providers of quality homes in London and the Home Counties with a portfolio of over 20,000 properties.

We build prestigious homes for market sale and shared ownership (part rent, part buy). Network Homes exists to build and manage homes. We operate commercially but our profits are ploughed back into our ambitious development programme where we aim to develop over 1,000 new homes a year. We take pride in providing an impressive specification which, coupled with sustainable design features, means our homes are ideal for modern living. We've been dedicated to doing this for over 40 years, since we were formed in 1974. Without a good home it is difficult for anyone to feel comfortable, happy or secure in their life. We believe everyone needs a good home, because good homes make everything possible.



We build quality homes for market sale and shared ownership... our profits are ploughed back into our ambitious development programme where we aim to develop over 1,000 new homes a year.



Because good homes make everything possible

[NETWORKHOMESSALES.CO.UK](https://www.networkhomessaes.co.uk)