

DAMAC TOWER

— NINE ELMS \ LONDON —

interior design by

VERSACE
HOME

FEATURES, AMENITIES
AND FLOOR PLANS

DEVELOPMENT SUMMARY

Kohn Pedersen Fox Associates (KPF) is the multiple award-winning firm of architects behind the DAMAC Tower development. A leader in its field, KPF's diverse portfolio comprises stunning residential, hospitality and mixed-use projects, as well as inspiring corporate, academic, civic and transportation developments, which span more than 35 countries.

DAMAC Tower will present a unique landmark on the London skyline with its bespoke façade and staggered floor arrangement. The towering 50-storey building will comprise light coloured stone, utilising glass reinforced concrete (GRC), and feature floor-to-ceiling picture windows, ceramic tiled panels and warm terracotta, along with 'winter gardens' that open doors from every apartment to exquisite panoramic views of London.

The double height entrance lobby will be complemented by a residential forecourt, beautifully landscaped using high quality materials, with spacious retail units facing onto the forecourt. Boutique office space will feature in the south tower.

Residences will be available in studio, one, two and three bedroom arrangements in addition to a small number of exclusive penthouse suites. The arrangement of the winter gardens attached to every apartment will be such that there is complete continuity between the glamorous Versace Home interiors and the great outdoors.

A range of luxury amenities will be available to residents, including expansive roof gardens overlooking London. Most unusually, the state-of-the-art gymnasium, swimming pool and Jacuzzi, all featuring elements of the signature Versace style, will be uniquely set on the 23rd floor of the north tower, and flooded with natural daylight as well as boast inspiring vistas of the surrounding neighbourhood.

Put simply, life at DAMAC Tower will represent the ultimate in luxury, the ultimate in Versace Home.



LEVELS 4/8-11

TYPICAL FLOOR PLANS

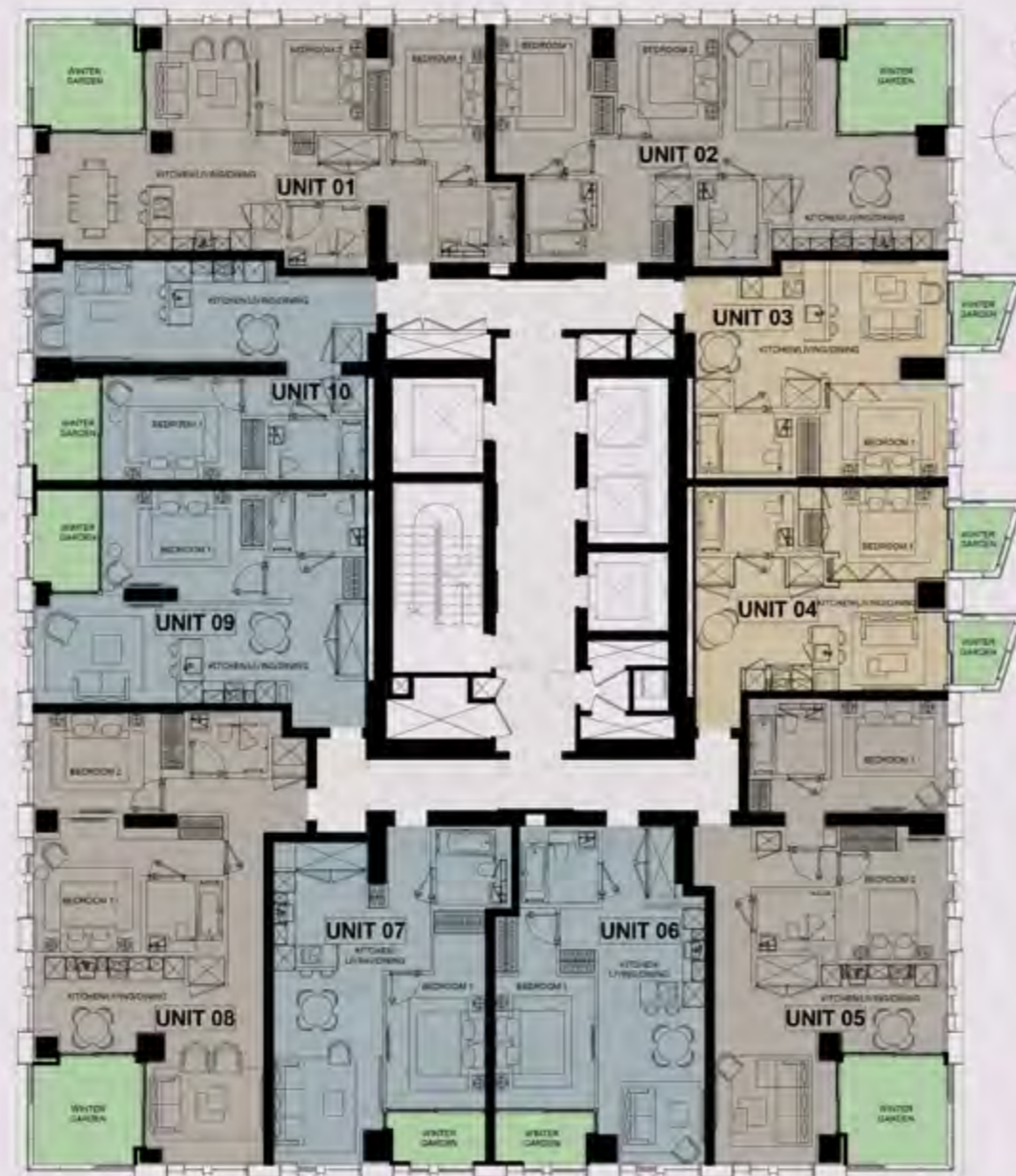
UNIT 01	2B-A.1
Kitchen/Living/Dining	9' 0" / 20' 5" x 11' 1" / 21' 3"
Bedroom 1	9' x 12' 6" / 14' 7"
Bedroom 2	10' 2" x 10' 1"
Apartment Area	552.9 SF
Winter Garden	101.9 SF
Total Area	654.8 SF

UNIT 10	1B-A.6
Kitchen/Living/Dining	32' 4" x 9' 4"
Bedroom 1	12' 2" x 9' 7"
Apartment Area	498.1 SF
Winter Garden	59.5 SF
Total Area	557.6 SF

UNIT 09	1B-A.5
Kitchen/Living/Dining	26' 0" x 9' 4"
Bedroom 1	15' 2" x 10' 5"
Apartment Area	605.8 SF
Winter Garden	58.1 SF
Total Area	663.9 SF

UNIT 08	2B-B.2
Kitchen/Living/Dining	21' 6" x 9' 1" / 19' 2"
Bedroom 1	10' 2" / 18" x 10' 1"
Bedroom 2	12' x 9' 9"
Apartment Area	586.2 SF
Winter Garden	104.4 SF
Total Area	690.6 SF

UNIT 07	1B-A.4
Kitchen/Living/Dining	10' 3" / 14' 0" x 27' 7"
Bedroom 1	9' 3" x 12' 1" / 18' 5"
Apartment Area	586.4 SF
Winter Garden	45.9 SF
Total Area	632.3 SF



UNIT 02	2B-A.2
Kitchen/Living/Dining	10' 2" / 32' 2" x 21' 3"
Bedroom 1	9' 1" x 14' 1"
Bedroom 2	9' 6" x 10' 4"
Apartment Area	817.6 SF
Winter Garden	101.8 SF
Total Area	919.5 SF

UNIT 03	ST-A.1
Kitchen/Living/Dining	23' 6" x 11' 2"
Bedroom 1	12' x 8' 6"
Apartment Area	498.1 SF
Winter Garden	29.4 SF
Total Area	527.5 SF

UNIT 04	ST-A.2
Kitchen/Living/Dining	23' 6" x 9' 9"
Bedroom 1	11' 9" x 8' 7"
Apartment Area	497.2 SF
Winter Garden	54.8 SF
Total Area	552.0 SF

UNIT 05	2B-B.1
Kitchen/Living/Dining	11' 5" / 22" x 16' 8"
Bedroom 1	16' 6" x 10' 5"
Bedroom 2	19' 1" x 10' 2"
Apartment Area	835.5 SF
Winter Garden	103.1 SF
Total Area	938.6 SF

UNIT 06	1B-A.3
Kitchen/Living/Dining	10' 1" x 24' 2" / 32"
Bedroom 1	8' 4" x 12' 5" / 18' 9"
Apartment Area	551.3 SF
Winter Garden	45.9 SF
Total Area	597.2 SF

LEVELS 5-7

TYPICAL FLOOR PLANS

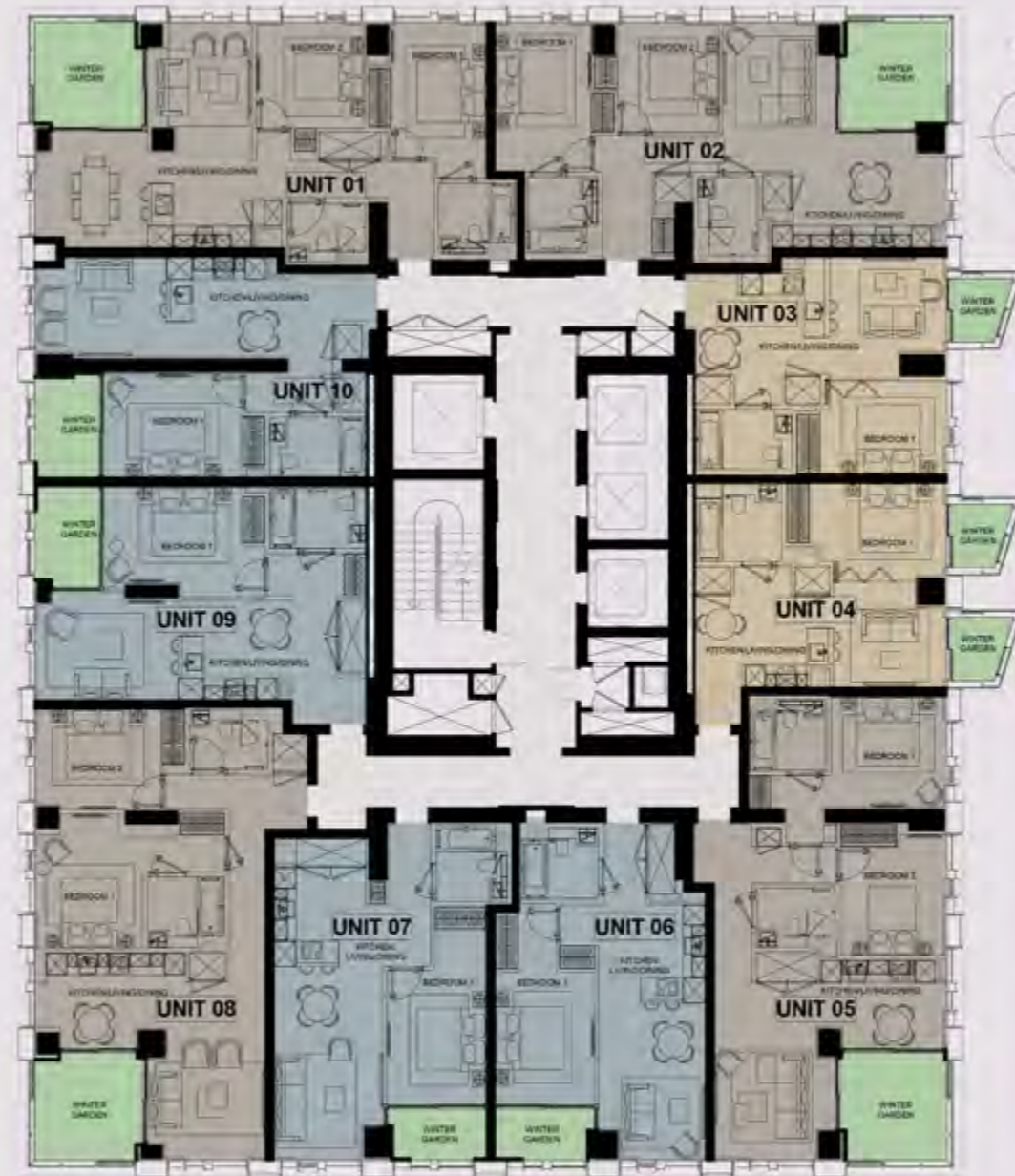
UNIT 01	2B-A.1
Kitchen/Living/Dining	9' 6" / 20' 9" x 11' 1" / 21' 3"
Bedroom 1	9' x 12' 6" / 14' 7"
Bedroom 2	10' 2" x 10' 1"
Apartment Area	552.9 SF
Winter Garden	101.9 SF
Total Area	654.8 SF

UNIT 10	1B-A.6
Kitchen/Living/Dining	32' 4" x 9' 4"
Bedroom 1	12' 2" x 9' 7"
Apartment Area	498.1 SF
Winter Garden	59.5 SF
Total Area	557.6 SF

UNIT 09	1B-A.5
Kitchen/Living/Dining	26' 0" x 9' 4"
Bedroom 1	15' 2" x 10' 5"
Apartment Area	605.8 SF
Winter Garden	58.1 SF
Total Area	663.9 SF

UNIT 08	2B-B.2
Kitchen/Living/Dining	21' 6" x 9' 1" / 19' 2"
Bedroom 1	10' 2" / 18" x 10' 1"
Bedroom 2	12' x 9' 9"
Apartment Area	586.2 SF
Winter Garden	104.4 SF
Total Area	690.6 SF

UNIT 07	1B-A.4
Kitchen/Living/Dining	10' 3" / 14' 0" x 27' 7"
Bedroom 1	9' 3" x 12' 1" / 18' 5"
Apartment Area	586.4 SF
Winter Garden	45.9 SF
Total Area	632.3 SF



UNIT 02	2B-A.2
Kitchen/Living/Dining	10' 2" / 32' 2" x 21' 3"
Bedroom 1	9' 1" x 14' 1"
Bedroom 2	9' 6" x 10' 4"
Apartment Area	817.6 SF
Winter Garden	101.8 SF
Total Area	919.5 SF

UNIT 03	ST-A.1
Kitchen/Living/Dining	23' 6" x 11' 2"
Bedroom 1	12' x 8' 6"
Apartment Area	498.1 SF
Winter Garden	29.4 SF
Total Area	527.5 SF

UNIT 04	ST-A.2 AC
Kitchen/Living/Dining	23' 6" x 9' 9"
Bedroom 1	11' 9" x 8' 7"
Apartment Area	497.2 SF
Winter Garden	54.8 SF
Total Area	552.0 SF

UNIT 05	2B-B.1
Kitchen/Living/Dining	11' 5" / 22" x 16' 8"
Bedroom 1	16' 6" x 10' 5"
Bedroom 2	19' 1" x 10' 2"
Apartment Area	835.5 SF
Winter Garden	103.1 SF
Total Area	938.6 SF

UNIT 06	1B-A.3
Kitchen/Living/Dining	10' 1" x 24' 2" / 32"
Bedroom 1	8' 4" x 12' 5" / 18' 9"
Apartment Area	551.3 SF
Winter Garden	45.9 SF
Total Area	597.2 SF

LEVELS 12-16

TYPICAL FLOOR PLANS

UNIT	01	2B-A.1
Kitchen/Living/Dining	10' 7" / 20' 5" x 11' 1" / 21' 3"	
Bedroom 1	9' x 12' 8" / 14' 7"	
Bedroom 2	10' 2" x 10' 1"	
Apartment Area	854.3 sq ft	
Winter Garden	100.9 sq ft	
Total Area	955.2 sq ft	

UNIT	10	1B-A.6
Kitchen/Living/Dining	32' 4" x 9' 4"	
Bedroom 1	13' 2" x 9' 7"	
Apartment Area	502.0 sq ft	
Winter Garden	59.5 sq ft	
Total Area	561.5 sq ft	

UNIT	09	1B-A.5 AC
Kitchen/Living/Dining	29' 5" x 9' 4"	
Bedroom 1	16' x 10' 5"	
Apartment Area	605.5 sq ft	
Winter Garden	56.1 sq ft	
Total Area	661.6 sq ft	

UNIT	08	2B-B.2
Kitchen/Living/Dining	21' 8" x 9' 1" / 19' 7"	
Bedroom 1	10' 2" / 16" x 10' 7"	
Bedroom 2	12' x 9' 5"	
Apartment Area	855.3 sq ft	
Winter Garden	104.4 sq ft	
Total Area	959.7 sq ft	

UNIT	07	1B-A.4
Kitchen/Living/Dining	10' 5" / 18' 9" x 27' 7"	
Bedroom 1	9' 2" x 12' 7" / 19' 9"	
Apartment Area	508.4 sq ft	
Winter Garden	45.9 sq ft	
Total Area	554.3 sq ft	



UNIT	02	2B-A.2
Kitchen/Living/Dining	10' 7" / 20' 5" x 21' 3"	
Bedroom 1	9' 7" x 14' 1"	
Bedroom 2	9' 8" x 10' 4"	
Apartment Area	877.5 sq ft	
Winter Garden	101.8 sq ft	
Total Area	979.3 sq ft	

UNIT	03	ST-A.1
Kitchen/Living/Dining	23' 8" x 11' 2"	
Bedroom 1	12' x 8' 8"	
Apartment Area	434.1 sq ft	
Winter Garden	23.4 sq ft	
Total Area	457.5 sq ft	

UNIT	04	ST-A.2
Kitchen/Living/Dining	23' 8" x 9' 8"	
Bedroom 1	11' 9" x 8' 7"	
Apartment Area	497.7 sq ft	
Winter Garden	58.8 sq ft	
Total Area	556.5 sq ft	

UNIT	05	2B-B.1
Kitchen/Living/Dining	11' 5" / 22" x 16' 8"	
Bedroom 1	10' 6" x 10' 6"	
Bedroom 2	10' 1" x 10' 2"	
Apartment Area	635.5 sq ft	
Winter Garden	103.1 sq ft	
Total Area	738.6 sq ft	

UNIT	06	1B-A.3
Kitchen/Living/Dining	10' 1" x 24' 2" / 32"	
Bedroom 1	9' 4" x 12' 5" / 18' 9"	
Apartment Area	551.3 sq ft	
Winter Garden	45.9 sq ft	
Total Area	597.2 sq ft	

LEVELS 17

TYPICAL FLOOR PLANS

UNIT	01	2B-A.1
Kitchen/Living/Dining	9' 8" / 20' 5" x 15' 1" / 21' 3"	
Bedroom 1	9' x 12' 8" / 14' 7"	
Bedroom 2	10' 2" x 10' 1"	
Apartment Area	851.8 sq ft	
Winter Garden	120.9 sq ft	
Total Area	972.7 sq ft	

UNIT	09	2B-C.1
Kitchen/Living/Dining	23' 4" / 32' 4" x 9' 4"	
Bedroom 1	10' 8" / 24' 7" x 9' 8"	
Bedroom 2	12' 6" x 9' 6"	
Apartment Area	657.9 sq ft	
Winter Garden	119.9 sq ft	
Total Area	777.8 sq ft	

UNIT	08	3B-A.1
Kitchen/Living/Dining	21' 8" x 11' / 21' 6"	
Bedroom 1	11' 5" / 23' 4" x 8' 9"	
Bedroom 2	11' 5" / 17' 2" x 10' 3"	
Bedroom 3	12' 7" / 17' 2" x 9' 5"	
Apartment Area	1270.0 sq ft	
Winter Garden	104.4 sq ft	
Total Area	1374.4 sq ft	

UNIT	07	1B-A.4
Kitchen/Living/Dining	10' 5" / 18' 9" x 27' 7"	
Bedroom 1	9' 2" x 12' 7" / 19' 9"	
Apartment Area	508.4 sq ft	
Winter Garden	45.9 sq ft	
Total Area	554.3 sq ft	



UNIT	02	2B-A.2
Kitchen/Living/Dining	10' 7" / 20' 5" x 21' 3"	
Bedroom 1	9' 7" x 14' 1"	
Bedroom 2	9' 8" x 10' 4"	
Apartment Area	877.5 sq ft	
Winter Garden	101.8 sq ft	
Total Area	979.3 sq ft	

UNIT	03	ST-A.1
Kitchen/Living/Dining	23' 8" x 11' 2"	
Bedroom 1	12' x 8' 8"	
Apartment Area	434.1 sq ft	
Winter Garden	23.4 sq ft	
Total Area	457.5 sq ft	

UNIT	04	ST-A.2
Kitchen/Living/Dining	23' 8" x 9' 8"	
Bedroom 1	11' 9" x 8' 7"	
Apartment Area	497.7 sq ft	
Winter Garden	58.8 sq ft	
Total Area	556.5 sq ft	

UNIT	05	2B-B.1
Kitchen/Living/Dining	11' 5" / 22" x 16' 8"	
Bedroom 1	10' 6" x 10' 6"	
Bedroom 2	10' 1" x 10' 2"	
Apartment Area	635.5 sq ft	
Winter Garden	103.1 sq ft	
Total Area	738.6 sq ft	

UNIT	06	1B-A.3
Kitchen/Living/Dining	10' 1" x 24' 2" / 32"	
Bedroom 1	9' 4" x 12' 5" / 18' 9"	
Apartment Area	551.3 sq ft	
Winter Garden	45.9 sq ft	
Total Area	597.2 sq ft	

LEVELS 18

TYPICAL FLOOR PLANS



All specifications, pictures, diagrams, layouts, photographs and other graphic material used are for illustrative purposes only. Layouts and individual features, specifications and items may vary or be substituted for replacement layouts, features, specifications or items of equivalent standard and style. The above material is correct at the time of print but may be subject to change as necessary and without notice. Specifications are indicative of the quality and style of the specification only and may not represent wholly the actual specifications at the development. Specifications and graphic materials are not intended to form part of any contract or warranty unless specifically incorporated in writing into the contract.

LEVELS 19-23

TYPICAL FLOOR PLANS



All specifications, pictures, diagrams, layouts, photographs and other graphic material used are for illustrative purposes only. Layouts and individual features, specifications and items may vary or be substituted for replacement layouts, features, specifications or items of equivalent standard and style. The above material is correct at the time of print but may be subject to change as necessary and without notice. Specifications are indicative of the quality and style of the specification only and may not represent wholly the actual specifications at the development. Specifications and graphic materials are not intended to form part of any contract or warranty unless specifically incorporated in writing into the contract.

LEVELS 25-26

TYPICAL FLOOR PLANS



LEVELS 27-28

TYPICAL FLOOR PLANS



All specifications, pictures, diagrams, layouts, photographs and other graphic material used are for illustrative purposes only. Layouts and individual features, specifications and items may vary or be substituted for replacement layouts, features, specifications or items of equivalent standard and style. The above material is correct at the time of print but may be subject to change as necessary and without notice. Specifications are indicative of the quality and style of the specification only and may not represent wholly the actual specifications at the development. Specifications and graphic materials are not intended to form part of any contract or warranty unless specifically incorporated in writing into the contract.

All specifications, pictures, diagrams, layouts, photographs and other graphic material used are for illustrative purposes only. Layouts and individual features, specifications and items may vary or be substituted for replacement layouts, features, specifications or items of equivalent standard and style. The above material is correct at the time of print but may be subject to change as necessary and without notice. Specifications are indicative of the quality and style of the specification only and may not represent wholly the actual specifications at the development. Specifications and graphic materials are not intended to form part of any contract or warranty unless specifically incorporated in writing into the contract.

LEVELS 29-36

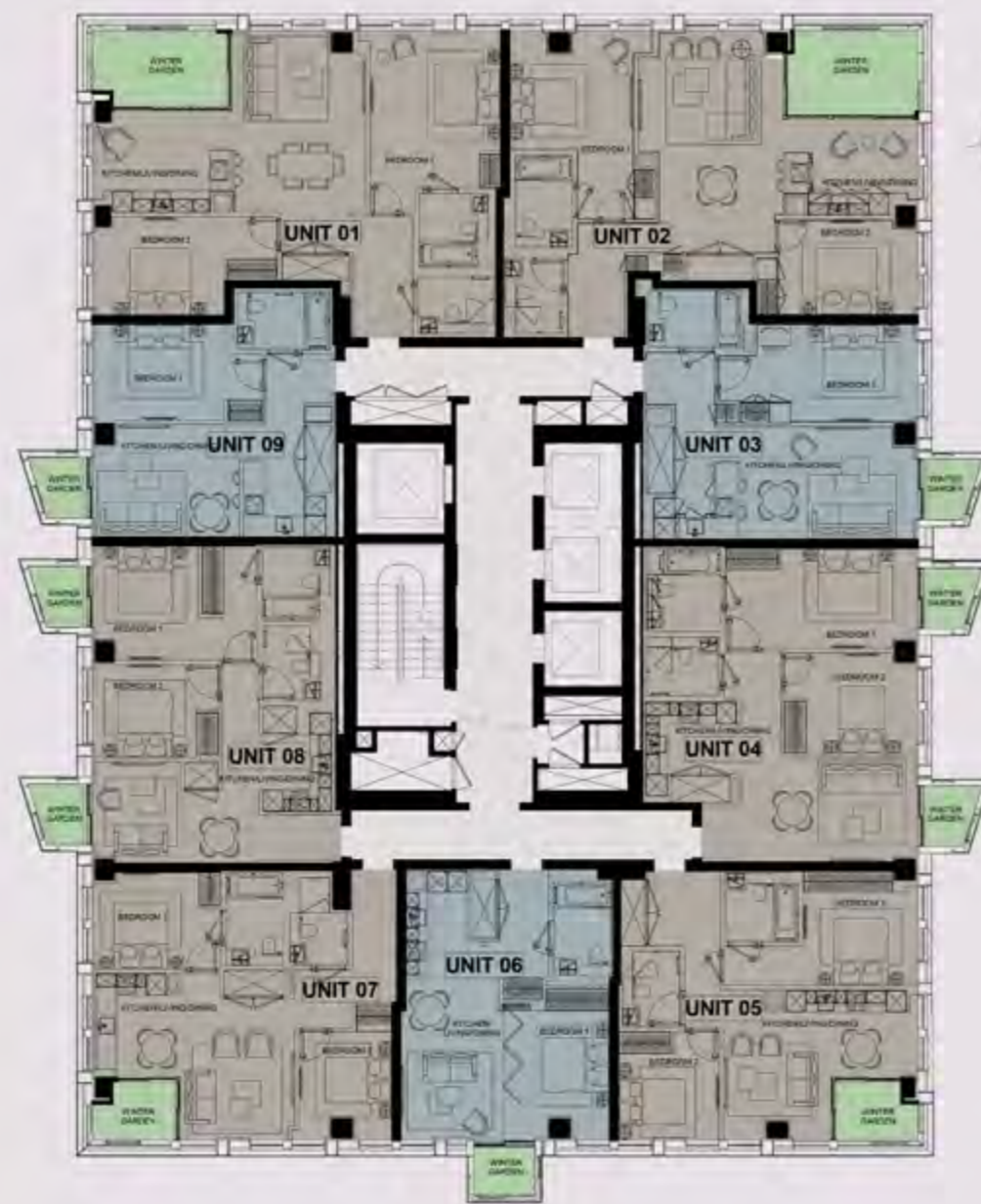
TYPICAL FLOOR PLANS

UNIT 01	2B-D.3
Kitchen/Living/Dining	20' 6" x 17' 6"
Bedroom 1	12' 6" x 10' 0"
Bedroom 2	12' 18" x 9' 8"
Apartment Area	320.5 sq'
Winter Garden	98.5 sq'
Total Area	419.0 sq'

UNIT 09	1B-E.1
Kitchen/Living/Dining	20' 6" x 11'
Bedroom 1	12' 6" x 9' 4"
Apartment Area	343.5 sq'
Winter Garden	29.5 sq'
Total Area	373.0 sq'

UNIT 08	2B-E.2
Kitchen/Living/Dining	16' 2" / 22' 5" x 10' / 12' 7"
Bedroom 1	10' 1" x 11' 2"
Bedroom 2	12' 3" x 9' 11"
Apartment Area	768.0 sq'
Winter Garden	57.5 sq'
Total Area	825.5 sq'

UNIT 07	2B-F.2
Kitchen/Living/Dining	19' 6" x 10' 2" / 16' 5"
Bedroom 1	12' 6" x 9' 6"
Bedroom 2	9' 5" x 10' 6"
Apartment Area	733.0 sq'
Winter Garden	47.4 sq'
Total Area	780.4 sq'



UNIT 02	2B-D.4
Kitchen/Living/Dining	22' 4" x 9' 4" / 21' 8"
Bedroom 1	12' 2" x 11' 7" / 18' 6"
Bedroom 2	13' 6" x 8' 2"
Apartment Area	350.7 sq'
Winter Garden	106.5 sq'
Total Area	457.2 sq'

UNIT 03	1B-A.7
Kitchen/Living/Dining	22' 6" x 11'
Bedroom 1	18' 6" x 9' 8"
Apartment Area	619.4 sq'
Winter Garden	29.5 sq'
Total Area	648.9 sq'

UNIT 04	2B-E.1 AC
Kitchen/Living/Dining	17' 4" / 26' 7" x 10' 3"
Bedroom 1	10' 6" x 9' 4"
Bedroom 2	13' 1" x 9' 8"
Apartment Area	821.1 sq'
Winter Garden	57.8 sq'
Total Area	878.9 sq'

UNIT 05	2B-F.1
Kitchen/Living/Dining	19' x 14' 7"
Bedroom 1	11' 2" / 19' 1" x 9' 1"
Bedroom 2	9' 8" x 12' 8" / 10' 5"
Apartment Area	722.8 sq'
Winter Garden	46.1 sq'
Total Area	768.9 sq'

UNIT 06	1B-A.8
Kitchen/Living/Dining	9' 2" x 26' 4"
Bedroom 1	12' 4" x 12' 7"
Apartment Area	345.1 sq'
Winter Garden	28.8 sq'
Total Area	373.9 sq'

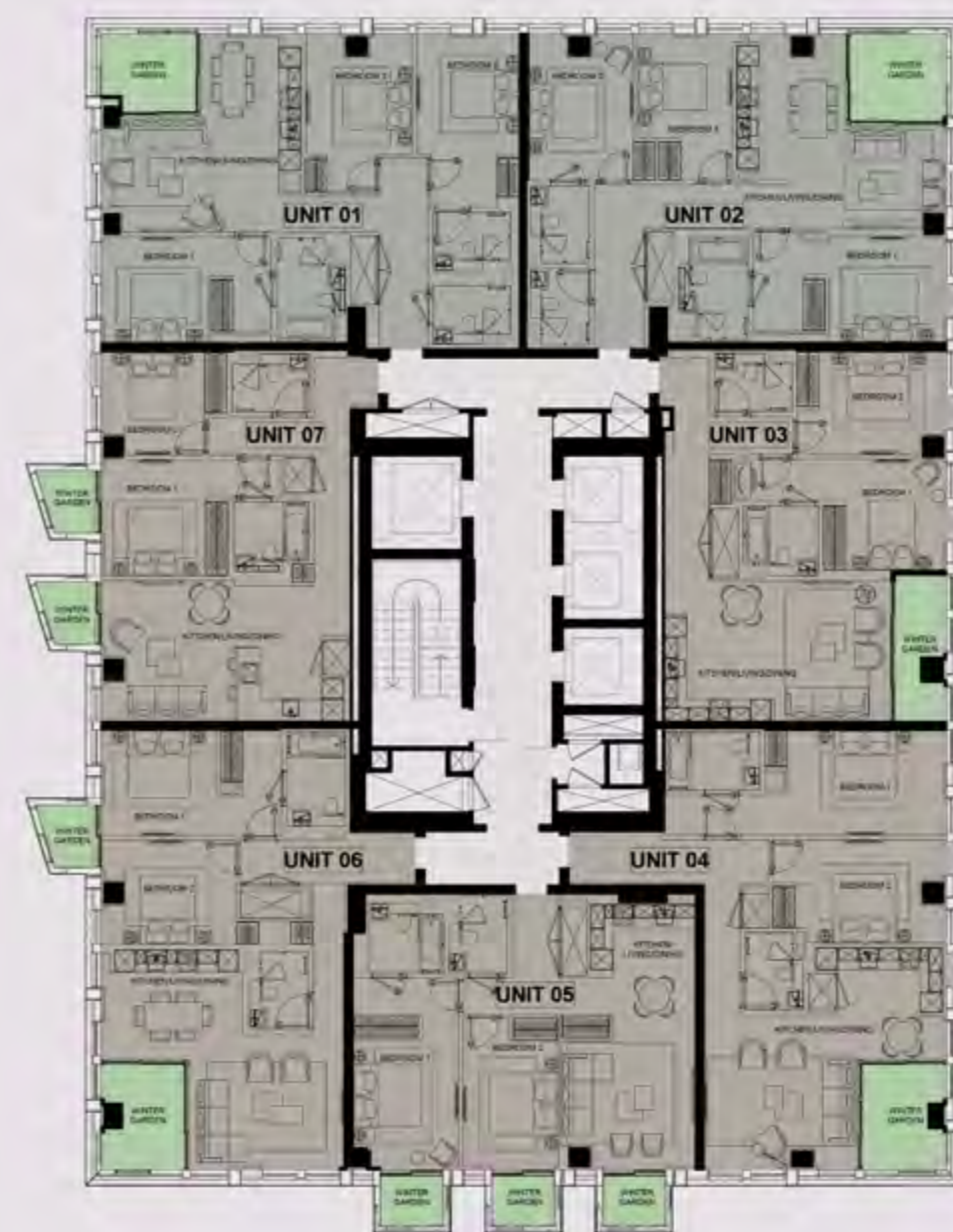
LEVELS 37-40

TYPICAL FLOOR PLANS

UNIT 01	3B-C.1
Kitchen/Living/Dining	19' 6" x 19'
Bedroom 1	10' 3" x 10' 5"
Bedroom 2	8' 6" x 10' 8"
Bedroom 3	12' 2" x 11' 6" / 10' 1"
Apartment Area	3120.5 sq'
Winter Garden	67.7 sq'
Total Area	3188.2 sq'

UNIT 07	2B-E.4
Kitchen/Living/Dining	22' 9" x 13' 5"
Bedroom 1	12' / 19' 4" x 11' 6"
Bedroom 2	9' 8" x 9' 8"
Apartment Area	362.1 sq'
Winter Garden	57.8 sq'
Total Area	419.9 sq'

UNIT 06	2B-B.4
Kitchen/Living/Dining	14' 9" / 22' 2" x 17' / 21' 3"
Bedroom 1	11' 3" / 19' 3" x 10' 5"
Bedroom 2	12' 9" x 9' 8"
Apartment Area	441.5 sq'
Winter Garden	126.3 sq'
Total Area	567.8 sq'



UNIT 02	3B-C.2
Kitchen/Living/Dining	20' 1" x 18' 7"
Bedroom 1	11' 2" / 18' 5" x 10' 2"
Bedroom 2	10' x 14'
Bedroom 3	9' x 10' / 14'
Apartment Area	1115.5 sq'
Winter Garden	77.1 sq'
Total Area	1192.6 sq'

UNIT 03	2B-E.3
Kitchen/Living/Dining	21' 7" x 13' 4"
Bedroom 1	9' 6" / 22' 2" x 10' 6"
Bedroom 2	12' 2" / 14' 3" x 9' 8"
Apartment Area	510.5 sq'
Winter Garden	69.0 sq'
Total Area	579.5 sq'

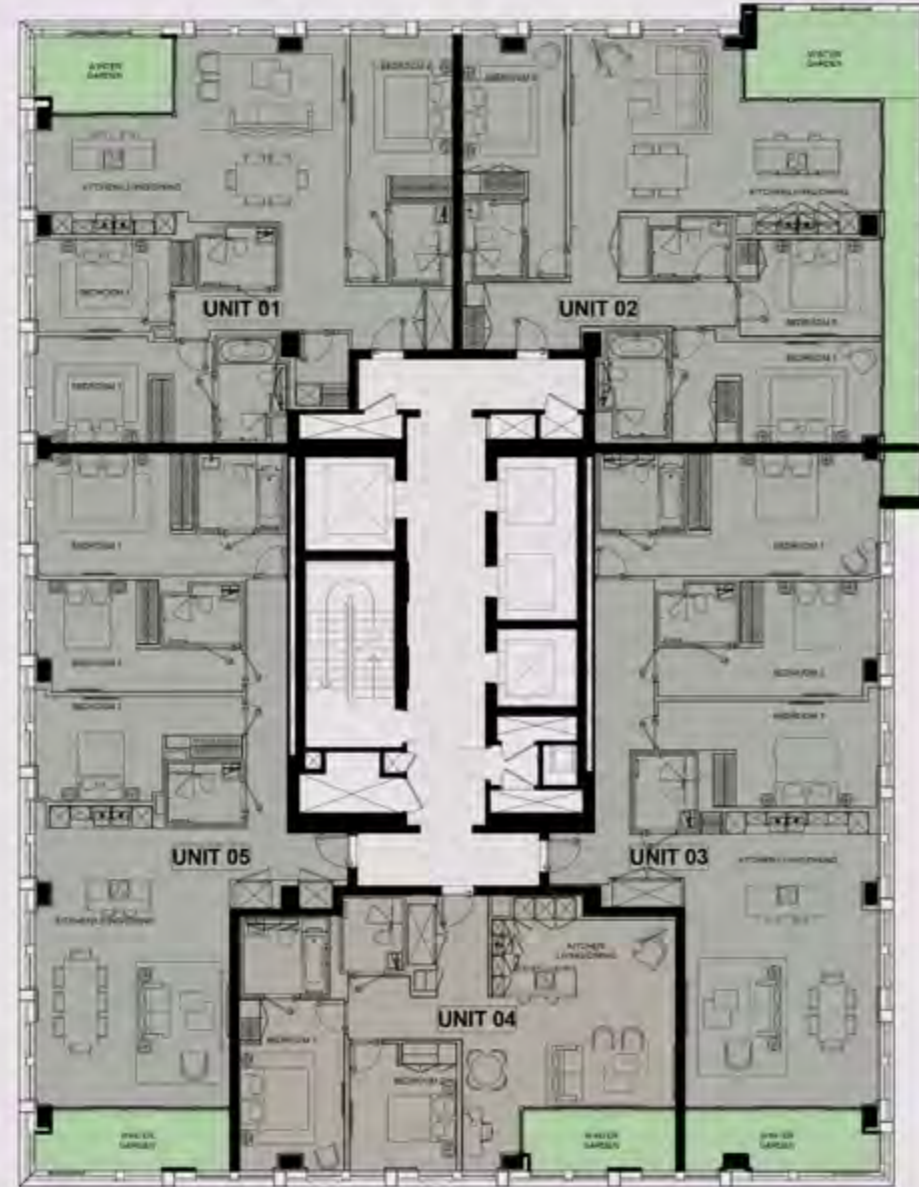
UNIT 04	2B-B.3
Kitchen/Living/Dining	14' 1" / 23' 2" x 14' 8" / 21' 3"
Bedroom 1	15' 2" / 22' x 10'
Bedroom 2	18' 6" x 9' 8"
Apartment Area	1061.3 sq'
Winter Garden	67.8 sq'
Total Area	1129.1 sq'

UNIT 05	2B-H.1
Kitchen/Living/Dining	12' 6" x 12' 3" / 20' 3"
Bedroom 1	12' 1" x 12' 4" / 19' 4"
Bedroom 2	9' 1" x 14' 5"
Apartment Area	364.3 sq'
Winter Garden	37.1 sq'
Total Area	401.4 sq'

LEVELS 41 TYPICAL FLOOR PLANS

UNIT	01	3B-D.1
Kitchen/Living/Dining	28' 7" x 17' 0"	
Bedroom 1	10' 8" x 12' x 10' 2"	
Bedroom 2	9' 8" x 13' 0" / 23' 7"	
Bedroom 3	12' 1" x 9' 0"	
Apartment Area	1366.8 sq'	
Winter Garden	88.5 sq'	
Total Area	1455.3 sq'	

UNIT	05	3B-E.2 AC
Kitchen/Living/Dining	18' 7" x 28' 8"	
Bedroom 1	13' 0" x 11' 8"	
Bedroom 2	9' 7" x 10' 0" x 10' 7"	
Bedroom 3	12' 2" x 18' 0" x 10'	
Apartment Area	9479.4 sq'	
Winter Garden	136.1 sq'	
Total Area	10841.5 sq'	



UNIT	02	3B-D.2
Kitchen/Living/Dining	28' 7" x 18' 0"	
Bedroom 1	13' 2" x 19' 8" x 9' 0"	
Bedroom 2	9' 8" x 13' 0" / 23' 7"	
Bedroom 3	11' 0" x 12' 4" x 10' 0"	
Apartment Area	1366.1 sq'	
Winter Garden	255.5 sq'	
Total Area	1641.6 sq'	

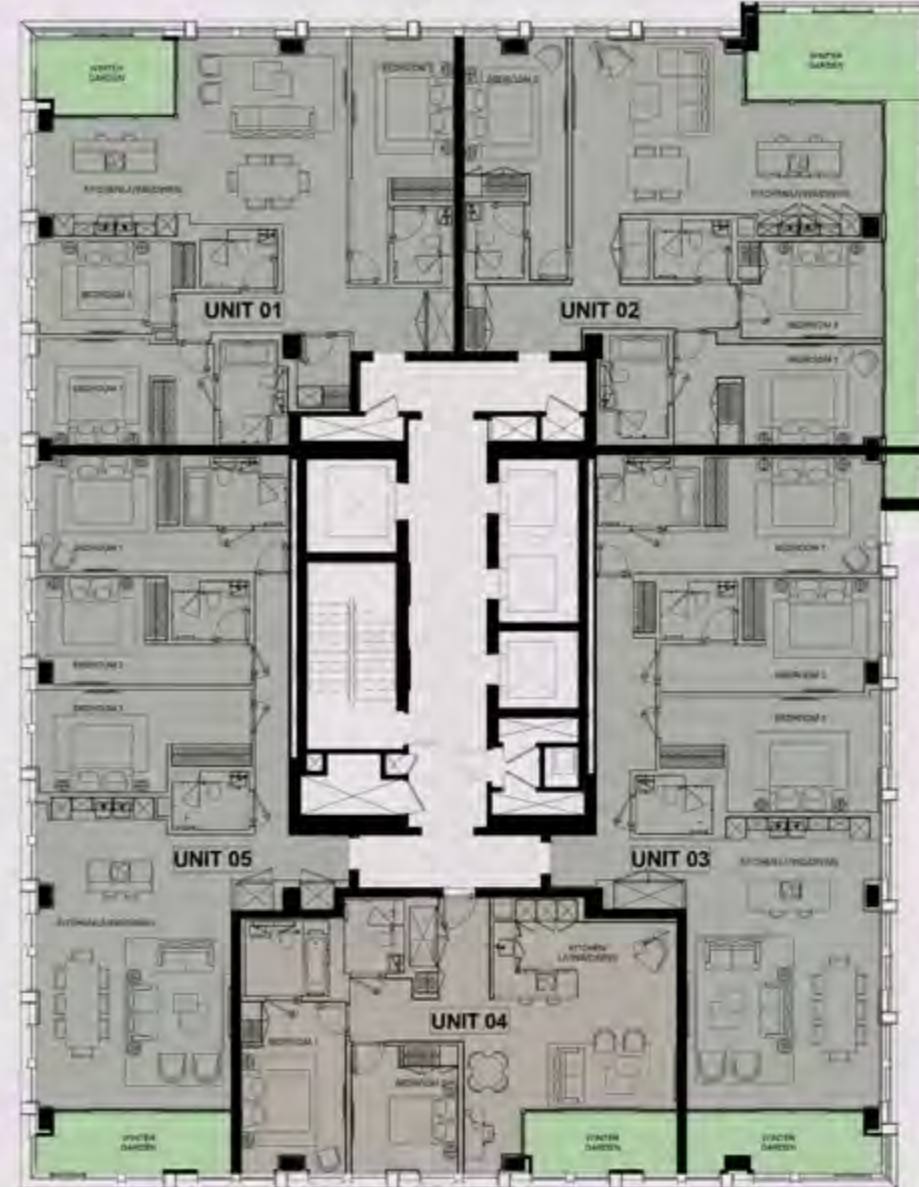
UNIT	03	3B-E.1 AC
Kitchen/Living/Dining	18' 7" x 28' 2"	
Bedroom 1	16' 2" x 22' 2" x 11' 8"	
Bedroom 2	11' 0" x 12' 0" x 11' 0"	
Bedroom 3	13' 8" x 24' 0" x 10' 0"	
Apartment Area	1560.8 sq'	
Winter Garden	123.5 sq'	
Total Area	1722.1 sq'	

UNIT	04	2B-1 AC
Kitchen/Living/Dining	17' 0" x 20' 4"	
Bedroom 1	18' 4" x 10' 1"	
Bedroom 2	18' 1" x 12' 2" x 10' 2"	
Apartment Area	985.1 sq'	
Winter Garden	51.4 sq'	
Total Area	1037.5 sq'	

LEVELS 42 TYPICAL FLOOR PLANS

UNIT	01	3B-D.1
Kitchen/Living/Dining	28' 7" x 17' 0"	
Bedroom 1	10' 8" x 12' x 10' 2"	
Bedroom 2	9' 8" x 13' 0" / 23' 7"	
Bedroom 3	12' 1" x 9' 0"	
Apartment Area	1366.8 sq'	
Winter Garden	88.5 sq'	
Total Area	1455.3 sq'	

UNIT	05	3B-E.2
Kitchen/Living/Dining	18' 7" x 28' 8"	
Bedroom 1	11' 0" x 11' 8" x 11' 8"	
Bedroom 2	10' 4" x 10' 0" x 10' 0"	
Bedroom 3	12' 0" x 18' 0" x 9' 0"	
Apartment Area	9479.4 sq'	
Winter Garden	136.1 sq'	
Total Area	10841.5 sq'	



UNIT	02	3B-D.2
Kitchen/Living/Dining	28' 7" x 18' 0"	
Bedroom 1	13' 2" x 19' 8" x 9' 0"	
Bedroom 2	9' 8" x 13' 0" / 23' 7"	
Bedroom 3	11' 0" x 12' 4" x 10' 0"	
Apartment Area	1366.1 sq'	
Winter Garden	255.5 sq'	
Total Area	1641.6 sq'	

UNIT	03	3B-E.1
Kitchen/Living/Dining	18' 7" x 27' 0"	
Bedroom 1	14' 8" x 22' 2" x 11' 4"	
Bedroom 2	11' 0" x 12' 0" x 10' 0"	
Bedroom 3	14' 8" x 24' 2" x 11'	
Apartment Area	1560.8 sq'	
Winter Garden	123.5 sq'	
Total Area	1722.1 sq'	

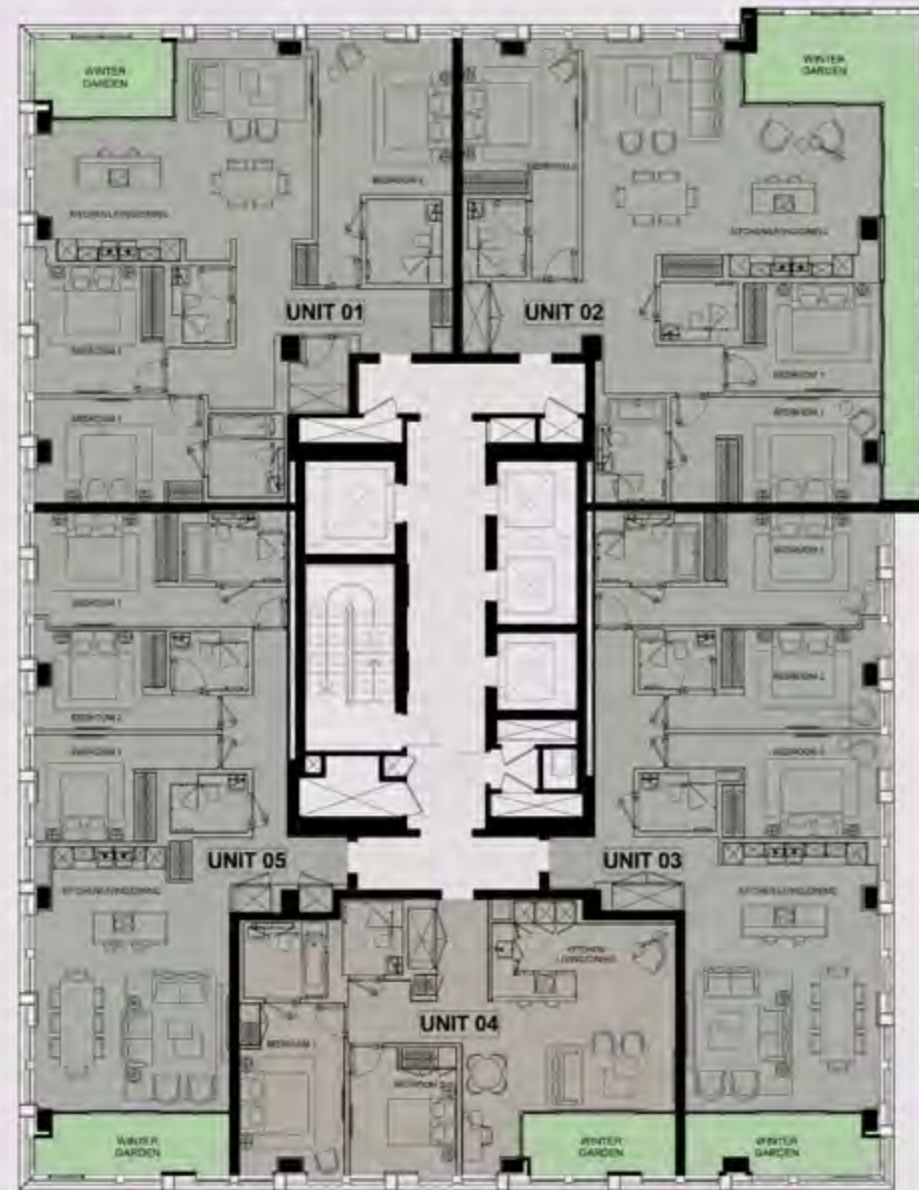
UNIT	04	2B-1 AC
Kitchen/Living/Dining	17' 0" x 20' 4"	
Bedroom 1	18' 4" x 10' 1"	
Bedroom 2	18' 1" x 12' 2" x 10' 2"	
Apartment Area	985.1 sq'	
Winter Garden	51.4 sq'	
Total Area	1037.5 sq'	

LEVELS 43-45

TYPICAL FLOOR PLANS

UNIT	01	3B-D.3 AC
Kitchen/Living/Dining	20' 0" x 21' 0"	
Bedroom 1	16' 0" x 10' 0"	
Bedroom 2	12' 0" x 14' 0" / 22' 0"	
Bedroom 3	12' 0" x 12' 0"	
Apartment Area	1491.6 sq'	
Winter Garden	86.6 sq'	
Total Area	1578.2 sq'	

UNIT	05	3B-E.4
Kitchen/Living/Dining	10' 0" x 20' 0"	
Bedroom 1	11' 0" / 24' 0" x 11' 0"	
Bedroom 2	10' 0" / 12' 0" x 9' 0"	
Bedroom 3	9' 0" / 12' 0" x 10' 0"	
Apartment Area	1348.7 sq'	
Winter Garden	108.1 sq'	
Total Area	1456.8 sq'	



UNIT	02	3B-D.4
Kitchen/Living/Dining	20' 0" x 20' 0"	
Bedroom 1	12' 0" / 20' 0" x 10' 0"	
Bedroom 2	11' 0" x 12' 0" / 22' 0"	
Bedroom 3	10' 0" / 14' 0" x 10' 0"	
Apartment Area	1537.7 sq'	
Winter Garden	273.2 sq'	
Total Area	1810.9 sq'	

UNIT	03	3B-E.3
Kitchen/Living/Dining	16' 0" x 20' 0"	
Bedroom 1	14' 0" / 22' 0" x 10' 0"	
Bedroom 2	12' 0" / 20' 0" x 9' 0"	
Bedroom 3	12' 0" / 20' 0" x 10' 0"	
Apartment Area	1450.3 sq'	
Winter Garden	108.1 sq'	
Total Area	1558.4 sq'	

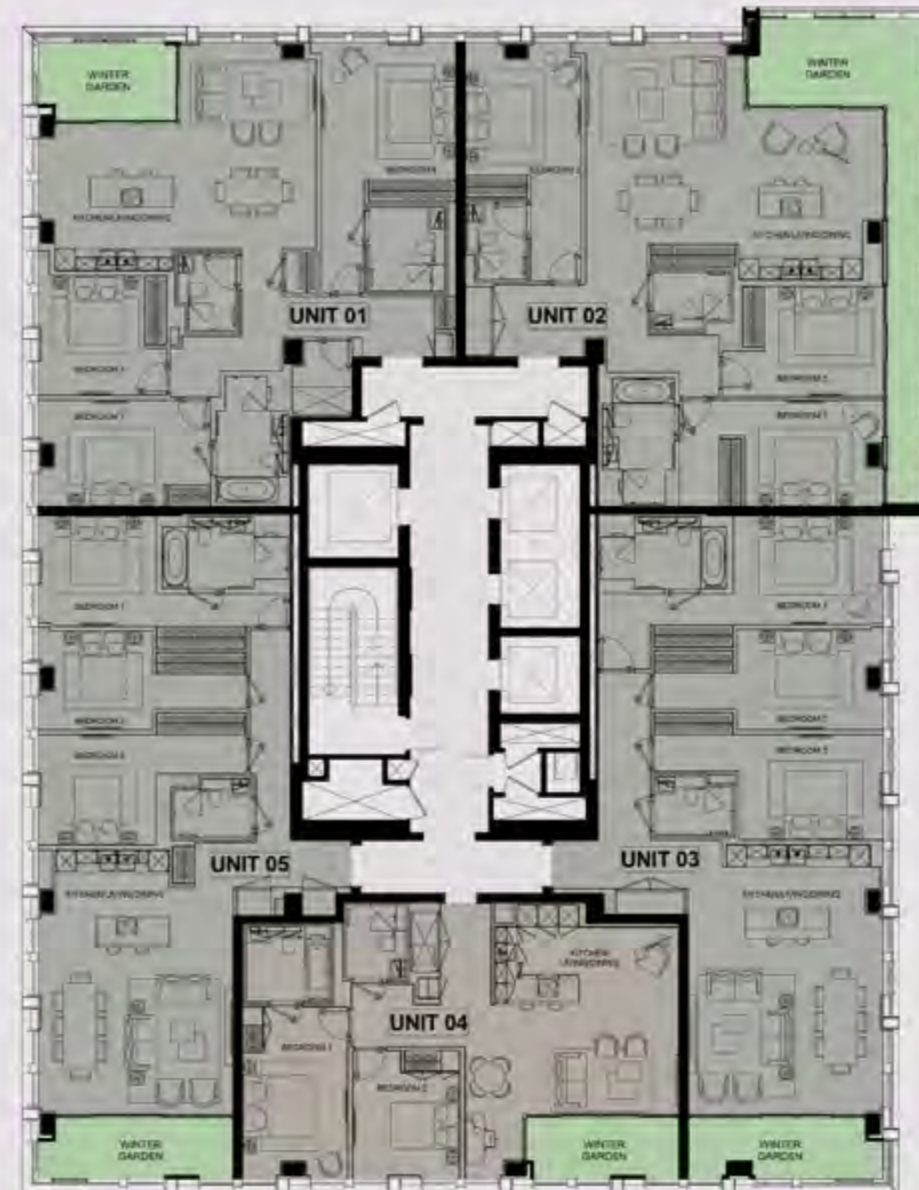
UNIT	04	2B-I.1 AC
Kitchen/Living/Dining	17' 0" x 20' 0"	
Bedroom 1	16' 0" x 10' 0"	
Bedroom 2	10' 0" / 12' 0" x 10' 0"	
Apartment Area	363.8 sq'	
Winter Garden	64.4 sq'	
Total Area	428.2 sq'	

LEVELS 46-47

TYPICAL FLOOR PLANS

UNIT	01	3B-D.5
Kitchen/Living/Dining	20' 0" x 10' 0"	
Bedroom 1	10' 0" x 10' 0"	
Bedroom 2	12' 0" x 12' 0" / 24' 0"	
Bedroom 3	12' 0" x 11' 0"	
Apartment Area	1491.6 sq'	
Winter Garden	86.6 sq'	
Total Area	1578.2 sq'	

UNIT	05	3B-E.6
Kitchen/Living/Dining	10' 0" x 20' 0"	
Bedroom 1	11' 0" / 24' 0" x 11' 0"	
Bedroom 2	11' 0" / 12' 0" x 9' 0"	
Bedroom 3	11' 0" / 12' 0" x 10' 0"	
Apartment Area	1348.7 sq'	
Winter Garden	108.1 sq'	
Total Area	1456.8 sq'	



UNIT	02	3B-D.6
Kitchen/Living/Dining	20' 0" x 10' 0"	
Bedroom 1	13' 0" / 10' 0" x 10' 0"	
Bedroom 2	11' 0" x 12' 0" / 22' 0"	
Bedroom 3	11' 0" / 10' 0" x 10' 0"	
Apartment Area	1537.7 sq'	
Winter Garden	273.2 sq'	
Total Area	1810.9 sq'	

UNIT	03	3B-E.5
Kitchen/Living/Dining	10' 0" x 20' 0"	
Bedroom 1	14' 0" / 22' 0" x 10' 0"	
Bedroom 2	12' 0" / 20' 0" x 9' 0"	
Bedroom 3	12' 0" / 20' 0" x 10' 0"	
Apartment Area	1450.3 sq'	
Winter Garden	108.1 sq'	
Total Area	1558.4 sq'	

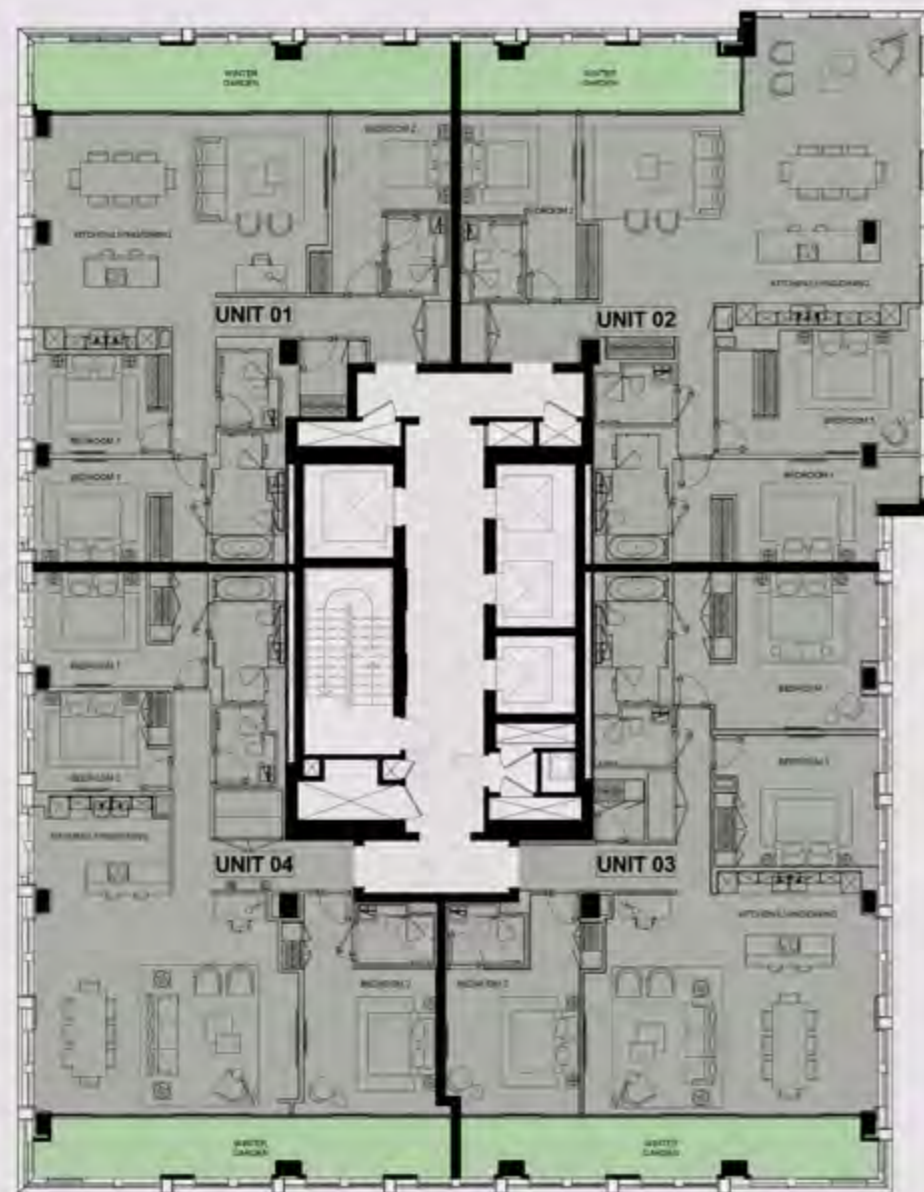
UNIT	04	2B-I.1
Kitchen/Living/Dining	17' 0" x 20' 0"	
Bedroom 1	16' 0" x 10' 0"	
Bedroom 2	10' 0" / 12' 0" x 10' 0"	
Apartment Area	363.8 sq'	
Winter Garden	64.4 sq'	
Total Area	428.2 sq'	

LEVELS 48

TYPICAL FLOOR PLANS

UNIT	01	3B-F 1
Kitchen/Living/Cloning	28' 5" x 17' 2" / 22' 5"	
Bedroom 1	12' 8" / 18' 5" x 12' 8"	
Bedroom 2	14' 5" x 12' 11" / 11' 4"	
Bedroom 3	12' 5" / 12' x 9' 5"	
Apartment Area	1443.8 sq'	
Winter Garden	263.3 sq'	
Total Area	1707.1 sq'	

UNIT	04	3B-G-2
Kitchen/Living/Cloning	22' 4" x 12' 4"	
Bedroom 1	10' 8" / 18' 3" x 11'	
Bedroom 2	12' 7" x 12' 5" / 21'	
Bedroom 3	10' 8" / 12' 1" x 9' 5"	
Apartment Area	1413.4 sq'	
Winter Garden	231.4 sq'	
Total Area	1644.8 sq'	



UNIT	02	3B-F 2
Kitchen/Living/Cloning	30' 4" x 29' 4"	
Bedroom 1	13' 8" / 18' 1" x 9' 8"	
Bedroom 2	14' 1" x 20' 4" / 12' 7"	
Bedroom 3	13' 4" / 12' 3" x 11' 8"	
Apartment Area	1750.4 sq'	
Winter Garden	175.9 sq'	
Total Area	1926.3 sq'	

UNIT	03	3B-G-1
Kitchen/Living/Cloning	28' 5" x 22' 2"	
Bedroom 1	13' 8" / 18' 8" x 15' 8"	
Bedroom 2	12' 8" x 13' 8" / 21'	
Bedroom 3	12' 8" / 12' 8" x 12' 5"	
Apartment Area	1776.5 sq'	
Winter Garden	231.4 sq'	
Total Area	2007.9 sq'	

APARTMENT FEATURES

INTERIOR FINISHES – GENERAL AREAS

- Timber entrance doors
- PU finish skirting
- Wood flooring to living and kitchen areas
- Feature stone flooring to hallway
- Polished stainless steel finish door fittings throughout
- Walls, ceilings and coving finished in white matt paint

MASTER BEDROOM

- Fully fitted wardrobes with PU finish and internal light
- Wood flooring
- Designer wallpaper for the feature wall in units with two or more bedrooms

GUEST BEDROOM

- Fully fitted wardrobes with PU finish
- Wood flooring

KITCHEN

- Kitchen with lacquered unit doors to match the overall unit theme
- Custom design built-in cupboards
- Composite stone worktop with glass back-painted splash-back
- Stainless steel recessed sink with single lever feature kitchen mixer
- Feature lighting below high-level cupboards and kitchen island (where applicable)
- Integrated appliances, including:
 - Oven
 - Microwave
 - Touch-control four-ring induction hob with ceiling extractor
 - Integrated dishwasher
 - Integrated fridge / freezer
- Built-in wine cooler and coffee machine for units where size permits

UTILITY CUPBOARD

- Bespoke PU finish joinery doors
- Combination washer / dryer
- Tiled flooring

MASTER SUITE BATHROOM

- Composite stone vanity shelf with wash basin and mixer tap
- Bathtub with glass screen if rain shower head incorporated
- Ceiling-mounted showerhead and control provided, with handheld shower fitment above baths where no separate shower enclosure is provided in the same bathroom
- Wall-hung WC with soft closing lid and dual flush button
- Marble tiles for 2 and 3 bedrooms, Ceramic tiles for studios and one bedrooms
- Heated towel rail
- Integrated vanity cabinets with mirrors and feature light

GUEST WC

- Composite stone vanity shelf with wash basin and mixer tap
- Ceiling-mounted showerhead and control with handheld shower
- Wall-hung WC with soft closing lid and dual flush button
- Interior designed wall, finished in a combination of natural stone and designer porcelain tiles
- Matching anti-skid porcelain flooring tiles
- Heated towel rail
- Integrated vanity cabinets with mirror and feature light

ELECTRICAL FITTINGS

- Dimmable lighting to living room and bedroom
- Socket outlets and isolator switch plates throughout
- Pre-constructed wire ways for wall-hung TV to living room and bedroom with data network

SECURITY AND PEACE OF MIND

- 24-hour concierge
- CCTV to ground floor entrances
- Access to apartment via video door entry system and electronic access to common areas
- All apartments pre-wired for future security alarm to be fitted by purchaser if required
- Smoke and fire alarm system as per the authority requirements and relevant codes
- Multi-point locking timber veneer entrance door with spy hole viewer

HEATING AND COOLING

- Thermostatically controlled heating and cooling to apartments

RESIDENTS' FACILITIES AND COMMON AREAS

- Exclusive access to gymnasium and indoor swimming pool, cinema room, residents' lounge and dedicated children's area located on high floors with panoramic city views
- Exclusive access to roof gardens
- Branded interior designed entrance lobbies, lifts and corridors
- Limited storage spaces available by separate negotiation

TELECOMMUNICATION

- Wiring for satellite / cable and terrestrial television
- TV outlet to living area and all bedrooms
- Telephone outlet with broadband capacity to living area and all bedrooms
- Fiber-optic connection to all apartments

CAR PARKING

- Valet parking available
- Limited car parking spaces available by separate negotiation
- Secure bicycle bays available for residents by separate negotiation



DAMAC

DAMAC TOWER NINE ELMS, A PROJECT BY NINE ELMS PROPERTY LIMITED, A WHOLLY OWNED SUBSIDIARY OF DAMAC INTERNATIONAL LIMITED.