

LIVING IN HARMONY



STONELEA

GARDENS E11





STONELEA

GARDENS E11

Stonelea Gardens is a brand-new community set in vibrant Leyton, East London. Centred around a village green, its spacious one, two and three-bedroom apartments are built to high environmental standards and are designed to last for generations. This modern community overlooks Langthorne Park, making it ideal if you like the idea of peaceful living that's only a short journey from the heart of London.

**ONE, TWO & THREE BEDROOM APARTMENTS
AVAILABLE THROUGH SHARED OWNERSHIP**



Computer generated artist impression



STONELEA GARDENS E11

90190
05106

LANGTHORNE HEALTH CENTRE



TOWARDS LEYTON UNDERGROUND



UNION CLOSE

-  AFFORDABLE RENT
-  AFFORDABLE RENT
-  APARTMENTS
-  HOUSES



POND

LANGTHORN PARK

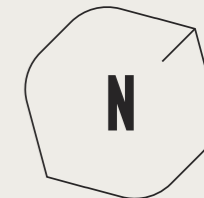
- LANGTHORN PARK**
- Streetball court, tennis wall, basketball facilities and outdoor gym
 - Amphitheatre and small hall
 - Picnic area
 - Public art features



ONE BEDROOM APARTMENT

APARTMENTS 13, 21 & 29

Total Internal Area 50.6m² / 544ft²



LIVING/KITCHEN/DINING

7.09m x 3.35m 23'3" x 10'11"

BEDROOM

5.21m x 2.75m 17'1" x 9'0"

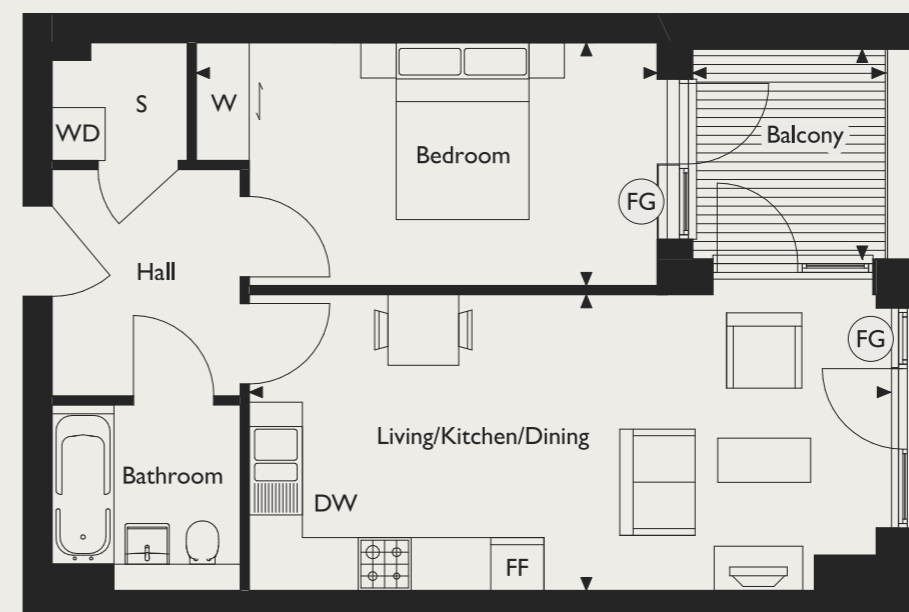
BALCONY

2.37m x 2.18m 7'9" x 7'1"

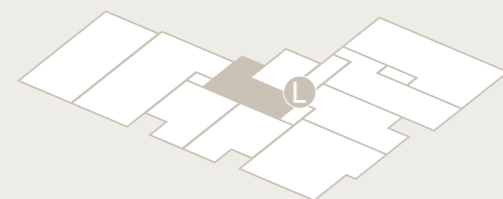
DW Dishwasher **FF** Fridge/Freezer

WD Washer/Dryer **FG** Frosted Glass

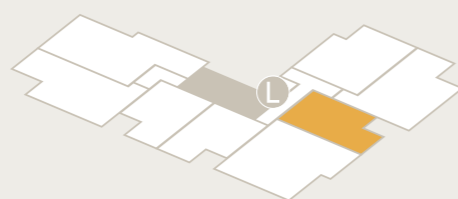
W Wardrobes **S** Storage **L** Lift



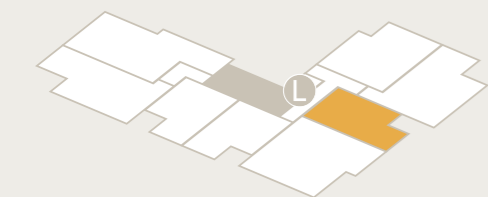
Ground Floor



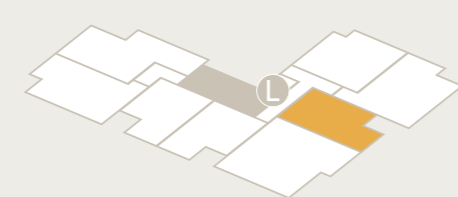
First Floor Apartment 13



Second Floor Apartment 21



Third Floor Apartment 29





ONE BEDROOM APARTMENT

APARTMENT 11, 19 & 27

Total Internal Area 51.6m² / 555ft²



LIVING/KITCHEN/DINING

7.40m x 3.31m 24'3" x 10'10"

BEDROOM

4.47m x 2.86m 14'8" x 9'4"

BALCONY

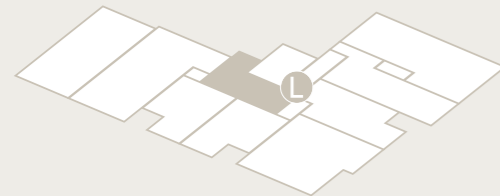
2.49 x 2.06M 8'2" x 6'9"

DW Dishwasher **FF** Fridge/Freezer

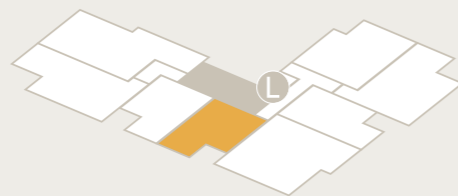
WD Washer/Dryer **FG** Frosted Glass

W Wardrobes **S** Storage **L** Lift

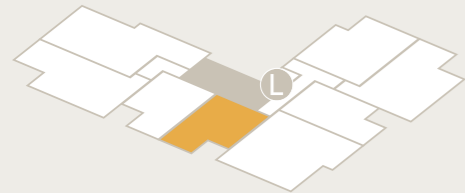
Ground Floor



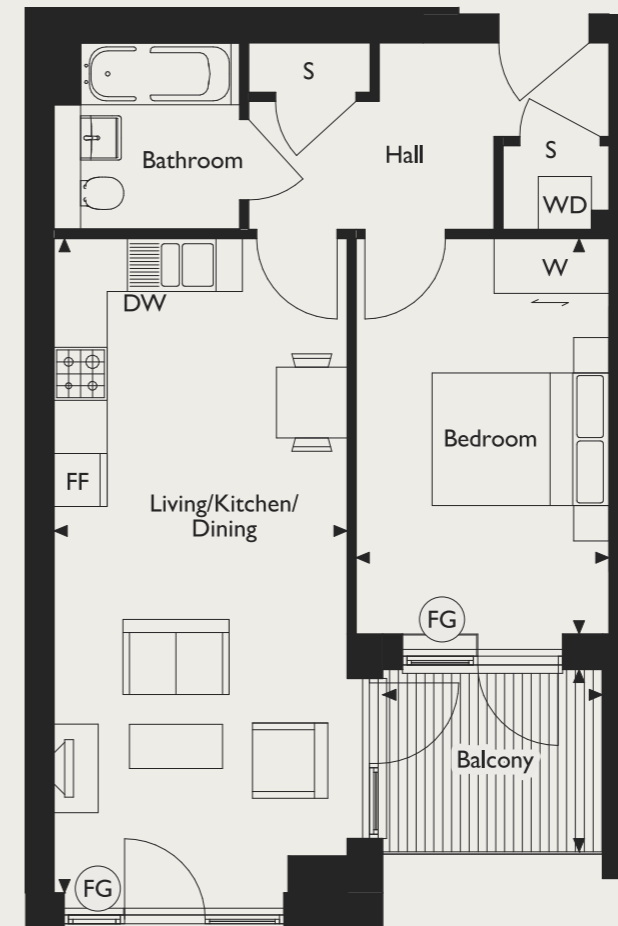
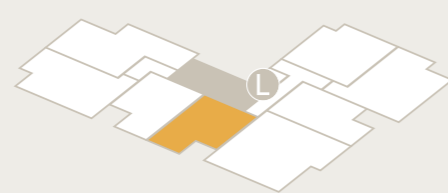
First Floor Apartment 11



Second Floor Apartment 19



Third Floor Apartment 27

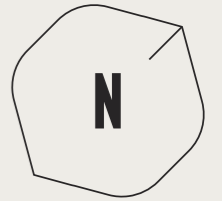




ONE BEDROOM APARTMENT

APARTMENTS 10, 18 & 26

Total Internal Area 51.6m² / 555ft²



LIVING/KITCHEN/DINING

7.40m x 3.31m 24'3" x 10'10"

BEDROOM

4.47m x 2.86m 14'8" x 9'4"

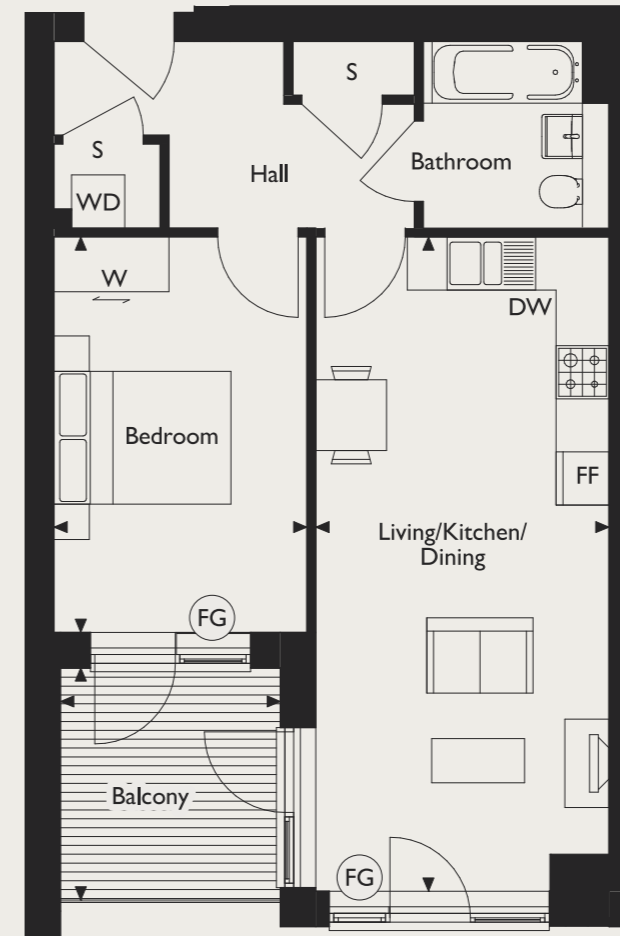
BALCONY

2.63m x 2.49m 8'7" x 8'2"

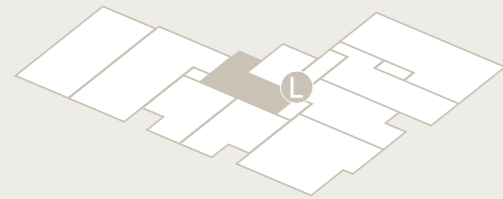
DW Dishwasher **FF** Fridge/Freezer

WD Washer/Dryer **FG** Frosted Glass

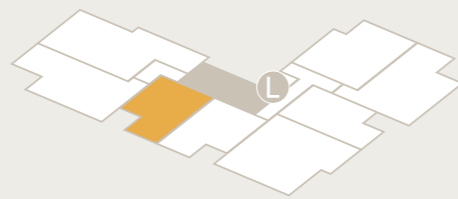
W Wardrobes **S** Storage **L** Lift



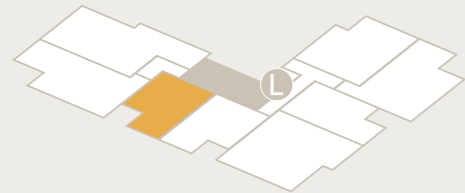
Ground Floor



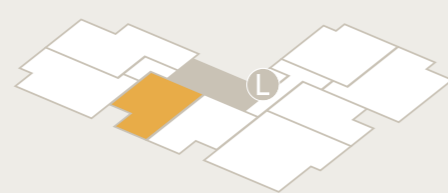
First Floor Apartment 10



Second Floor Apartment 18



Third Floor Apartment 26

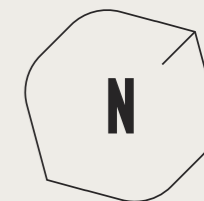




ONE BEDROOM APARTMENT

APARTMENT 04

Total Internal Area 51.6m² / 555ft²



LIVING/KITCHEN/DINING

7.40m x 3.31m 24'3" x 10'10"

BEDROOM

4.47m x 2.56m 14'8" x 9'4"

GARDEN

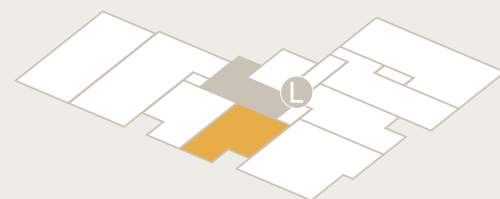
6.59m x 5.89m 21'7" x 19'4"

DW Dishwasher **FF** Fridge/Freezer

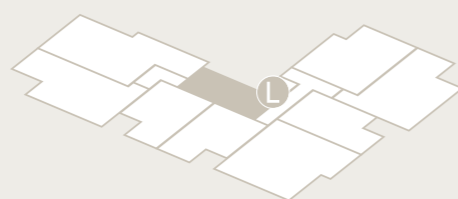
WD Washer/Dryer **FG** Frosted Glass

W Wardrobes **S** Storage **L** Lift

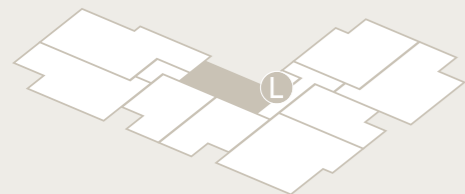
Ground Floor



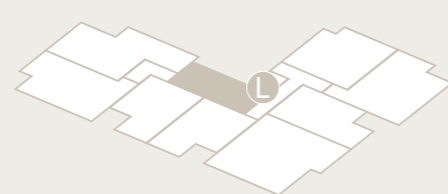
First Floor



Second Floor



Third Floor

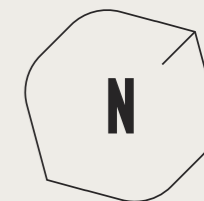




ONE BEDROOM APARTMENT

APARTMENT 03

Total Internal Area 51.6m² / 555ft²



LIVING/KITCHEN/DINING

7.40m x 3.31m 24'3" x 10'10"

BEDROOM

4.47m x 2.86m 14'8" x 9'4"

GARDEN

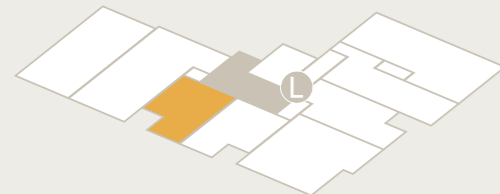
6.79m x 6.39m 22'3" x 20'11"

DW Dishwasher **FF** Fridge/Freezer

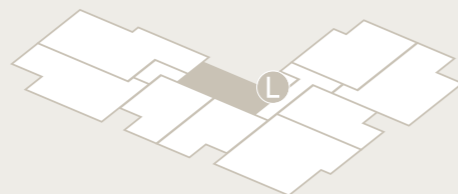
WD Washer/Dryer **FG** Frosted Glass

W Wardrobes **S** Storage **L** Lift

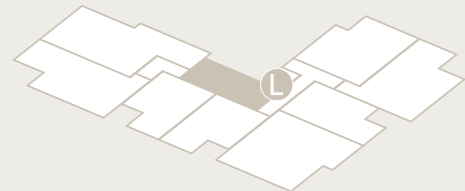
Ground Floor



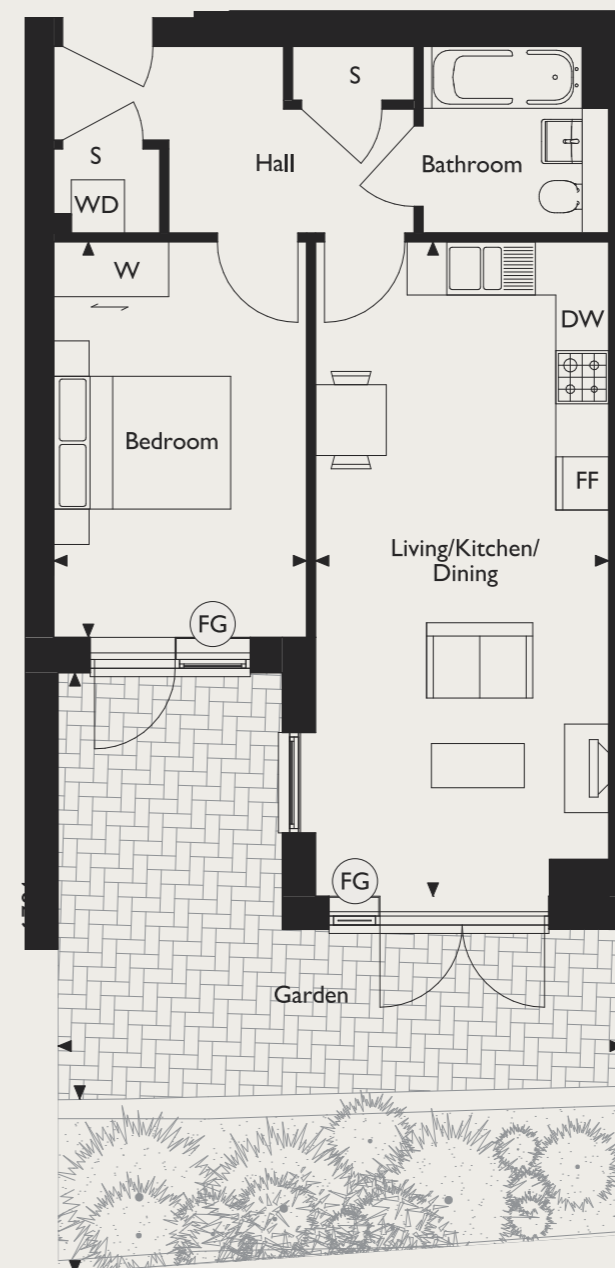
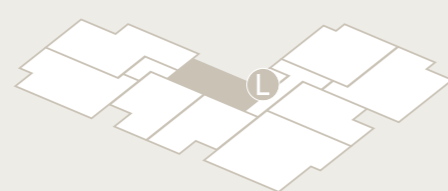
First Floor



Second Floor



Third Floor

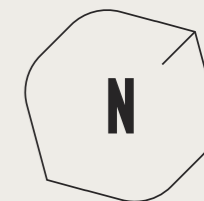




ONE BEDROOM APARTMENT

APARTMENT 06

Total Internal Area 58.6m² / 630ft²



LIVING/KITCHEN/DINING

8.17m x 3.35m 26'9" x 10'11"

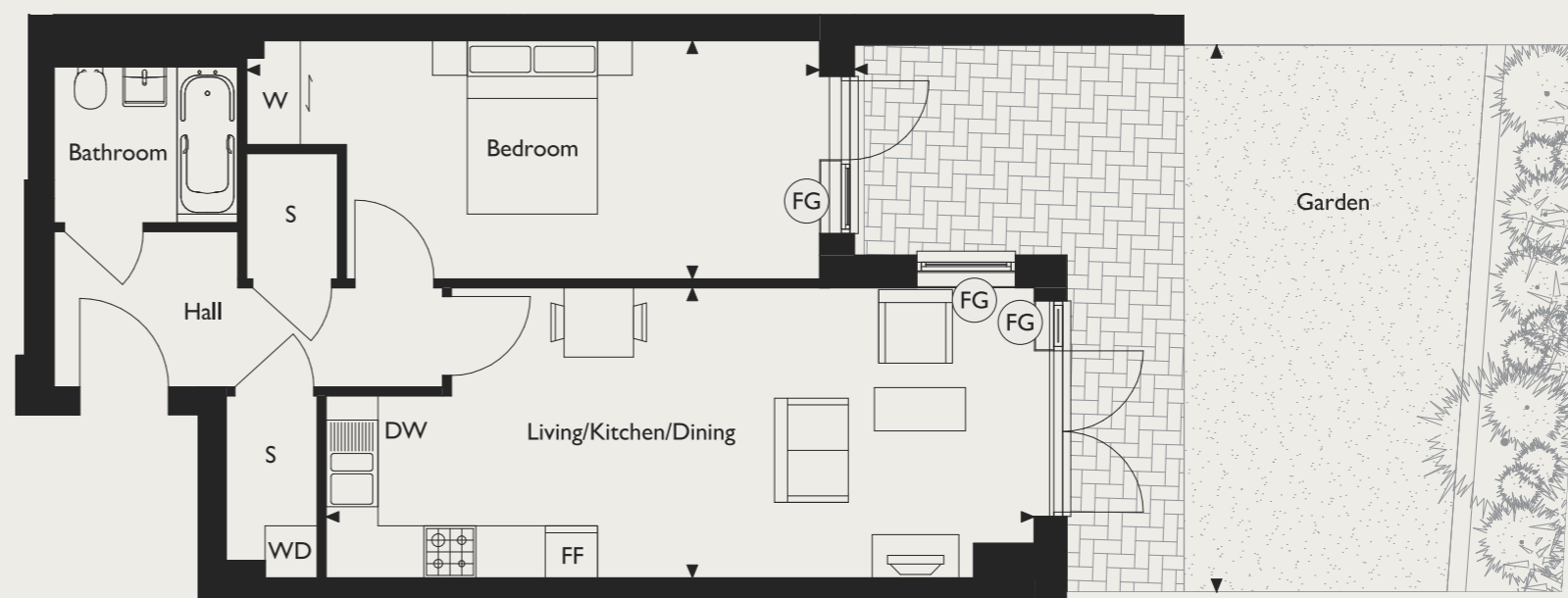
BEDROOM

6.61m x 2.75m 21'8" x 9'0"

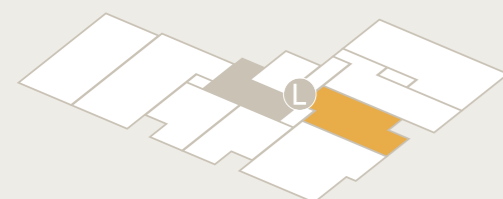
GARDEN

6.31m x 5.72m 20'8" x 18'9"

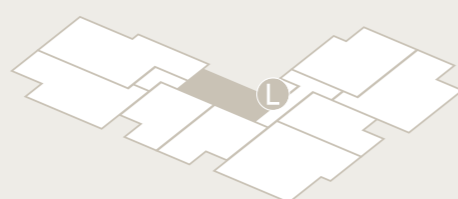
DW Dishwasher **FF** Fridge/Freezer
WD Washer/Dryer **FG** Frosted Glass
W Wardrobes **S** Storage **L** Lift



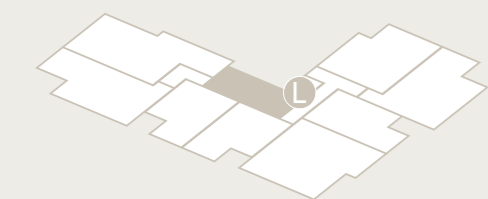
Ground Floor



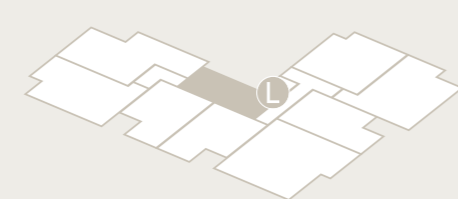
First Floor



Second Floor



Third Floor



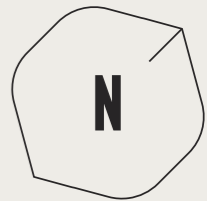


TWO BEDROOM APARTMENT

APARTMENT 30

Total Internal Area 61m² / 656ft²

13114



LIVING/KITCHEN/DINING

7.36m x 4.53m 24'1" x 14'10"

BEDROOM 1

3.99m x 3.07m 13'1" x 10'1"

BEDROOM 2

3.99m x 2.01m 13'1" x 6'7"

TERRACE

7.59m x 3.08m 24'11" x 10'1"

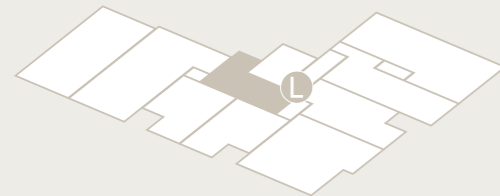
DW Dishwasher **FF** Fridge/Freezer

WD Washer/Dryer **FG** Frosted Glass

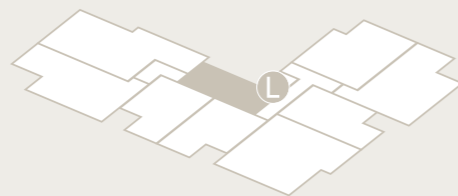
W Wardrobes **S** Storage **L** Lift **W**

Wardrobes **S** Storage **L** Lift

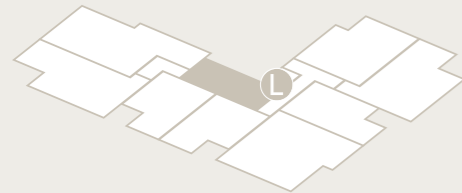
Ground Floor



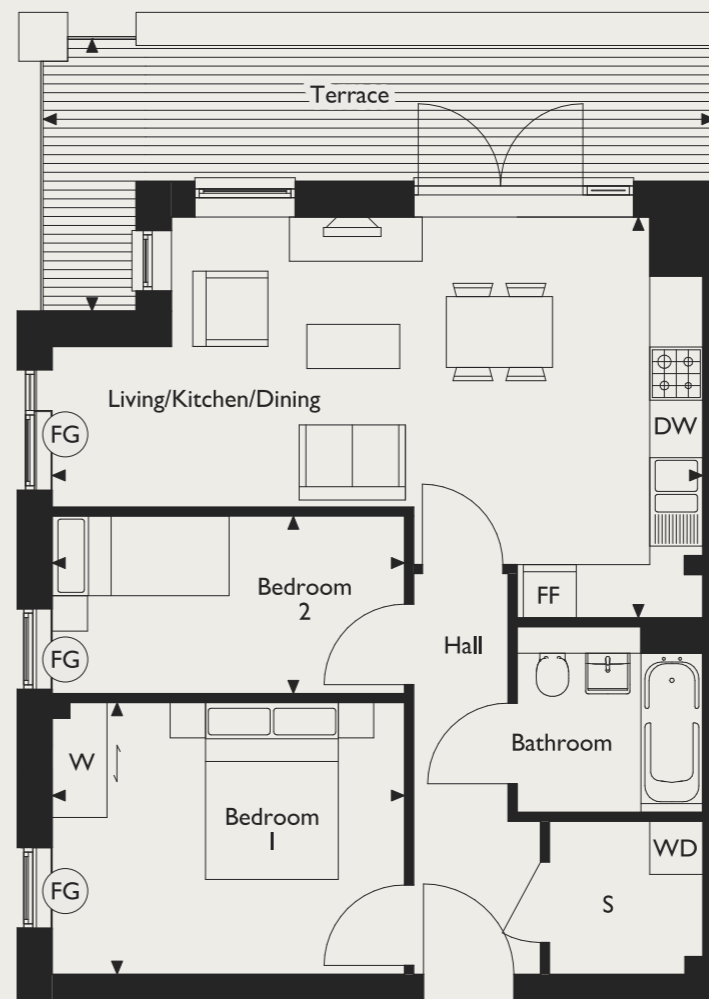
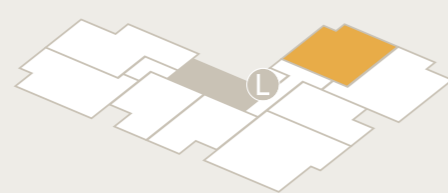
First Floor



Second Floor



Third Floor



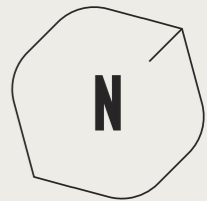




TWO BEDROOM APARTMENT

APARTMENT 25

Total Internal Area 66.8m² / 719ft²



LIVING/KITCHEN/DINING

6.94m x 5.51m 22'9" x 18'1"

BEDROOM 1

4.65m x 3.23m 15'3" x 10'7"

BEDROOM 2

3.30m x 2.26m 10'10" x 7'5"

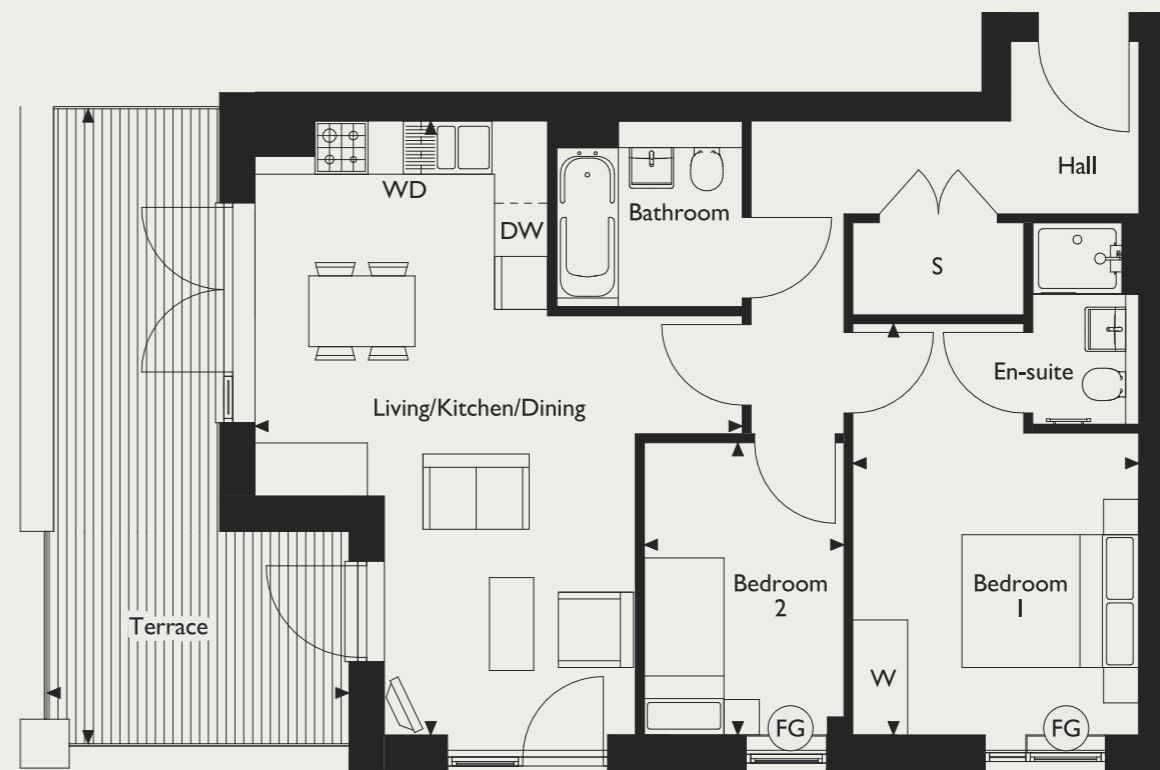
TERRACE

7.18m x 3.41m 23'6" x 11'2"

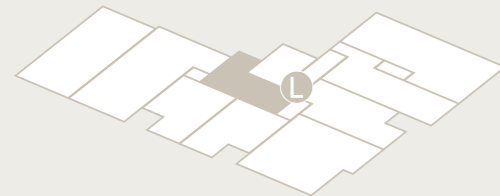
DW Dishwasher **FF** Fridge/Freezer

WD Washer/Dryer **FG** Frosted Glass

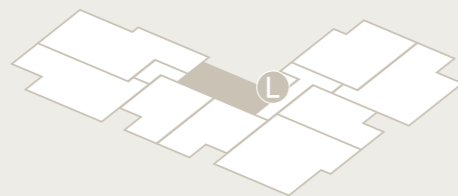
W Wardrobes **S** Storage **L** Lift



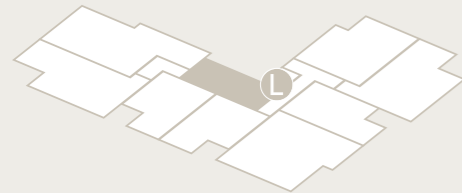
Ground Floor



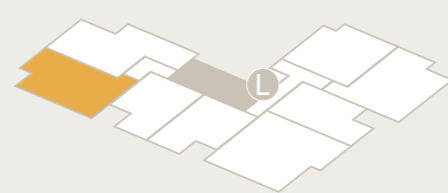
First Floor



Second Floor



Third Floor

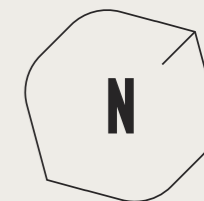




TWO BEDROOM APARTMENT

APARTMENT 24

Total Internal Area 68.4m² / 736ft²



LIVING/KITCHEN/DINING

5.88m x 4.92m 19'3" x 16'1"

BEDROOM 1

5.60m x 3.17m 18'4" x 10'5"

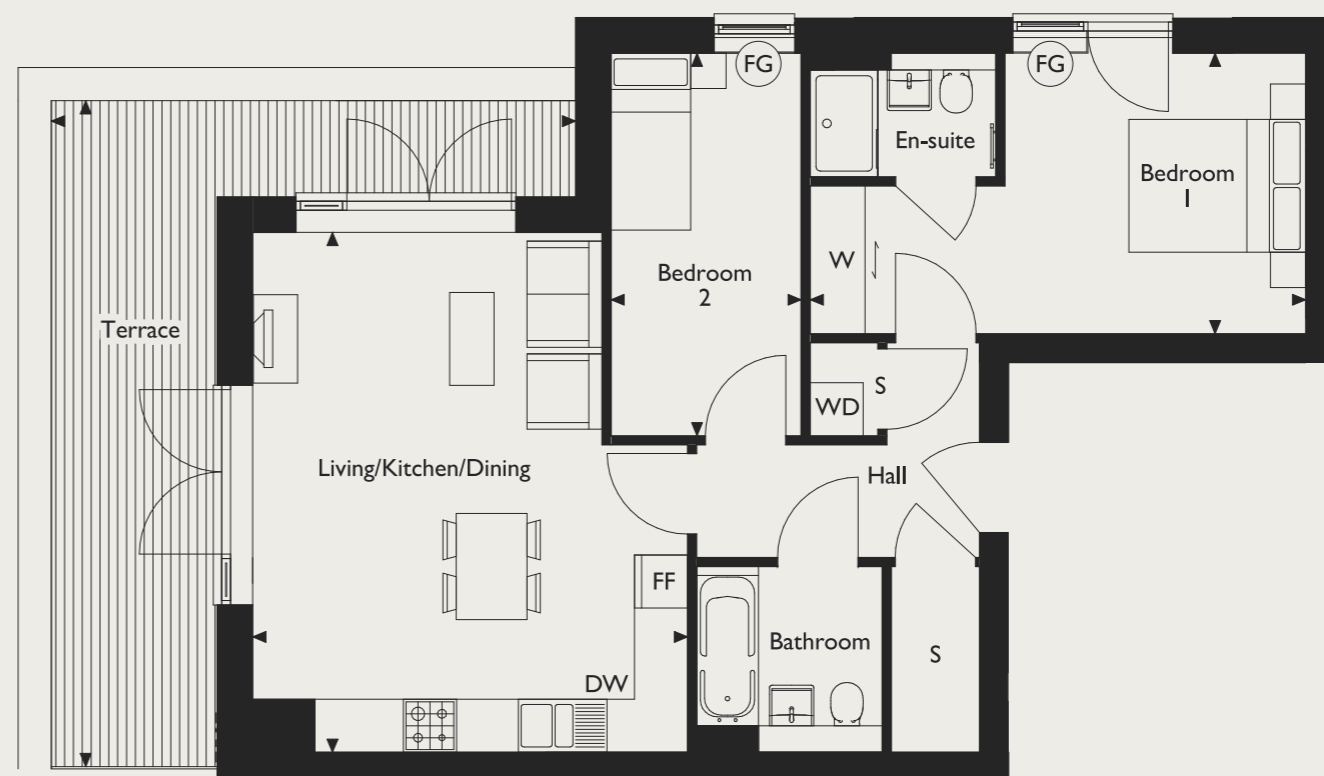
BEDROOM 2

4.33m x 2.15m 14'2" x 7'0"

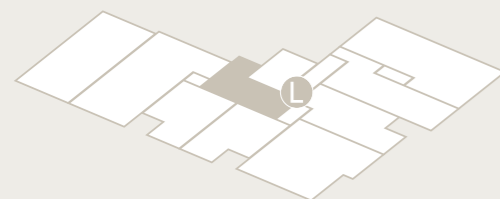
TERRACE

7.53m x 5.93m 24'8" x 19'5"

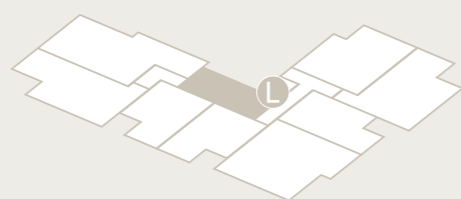
DW Dishwasher **FF** Fridge/Freezer
WD Washer/Dryer **FG** Frosted Glass
W Wardrobes **S** Storage **L** Lift



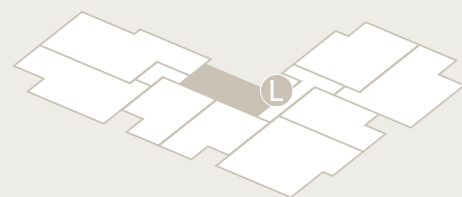
Ground Floor



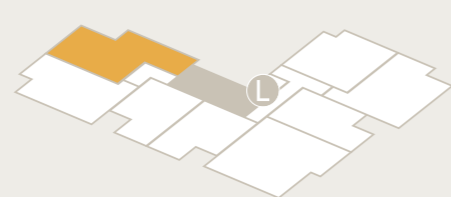
First Floor



Second Floor



Third Floor

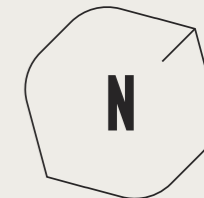




TWO BEDROOM APARTMENT

APARTMENT 31

Total Internal Area 70.4m² / 757ft²



LIVING/KITCHEN/DINING

6.10m x 5.47m 20'0" x 17'11"

BEDROOM 1

4.57m x 3.57m 14'11" x 11'8"

BEDROOM 2

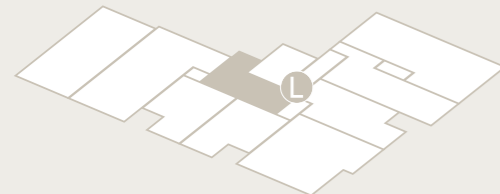
3.57m x 2.70m 11'8" x 8'10"

TERRACE

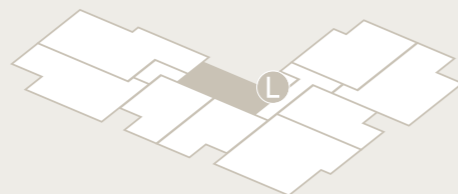
7.18m x 3.19m 23'7" x 10'5"

DW Dishwasher **FF** Fridge/Freezer
WD Washer/Dryer **FG** Frosted Glass
W Wardrobes **S** Storage **L** Lift

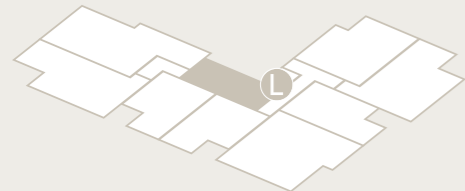
Ground Floor



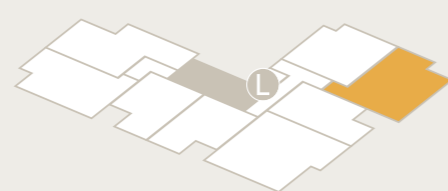
First Floor



Second Floor



Third Floor

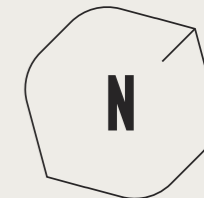




TWO BEDROOM APARTMENT

APARTMENTS 14 & 22

Total Internal Area 72.5m² / 780ft²



LIVING/KITCHEN/DINING

6.40m x 6.01m 21'0" x 19'8"

BEDROOM 1

3.95m x 3.53m 12'11" x 11'7"

BEDROOM 2

3.95m x 3.47m 12'11" x 11'4"

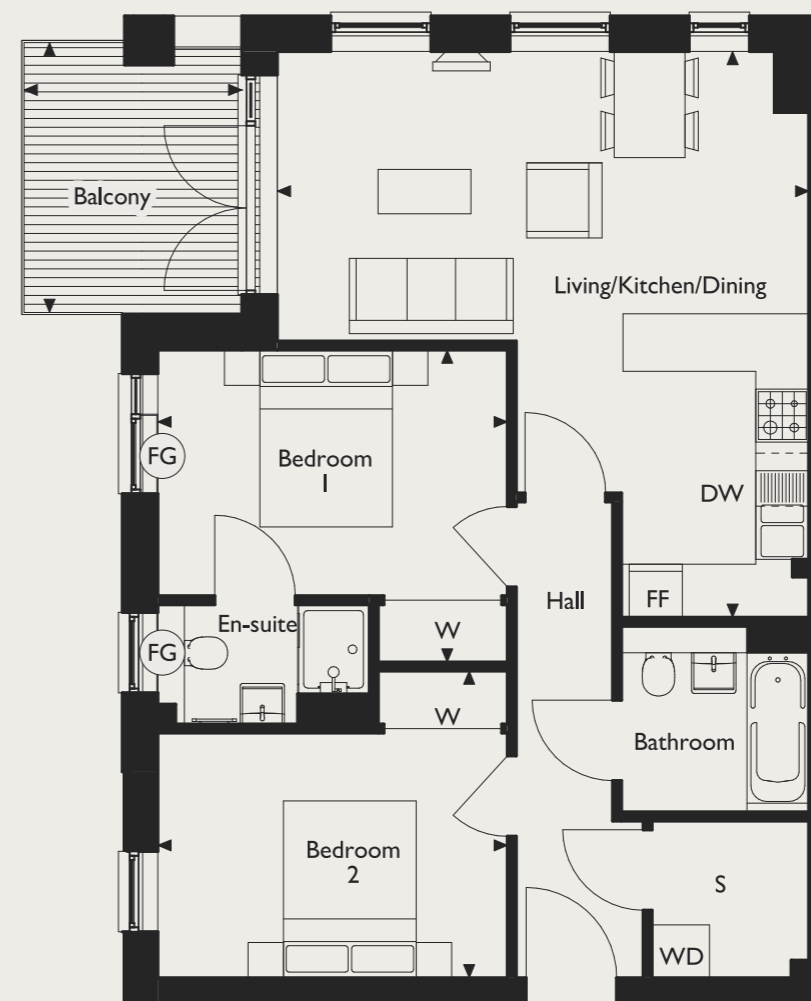
BALCONY

3.05m x 2.46m 10'0" x 8'1"

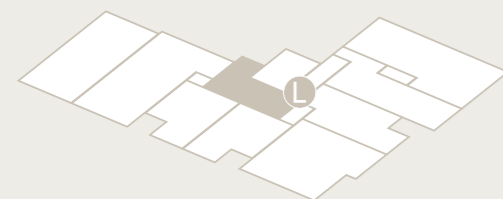
DW Dishwasher **FF** Fridge/Freezer

WD Washer/Dryer **FG** Frosted Glass

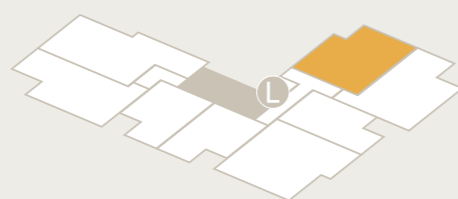
W Wardrobes **S** Storage **L** Lift



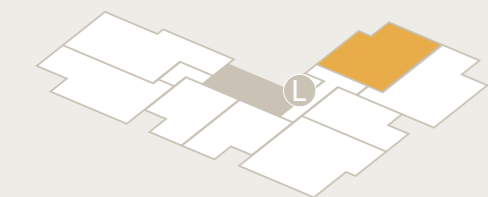
Ground Floor



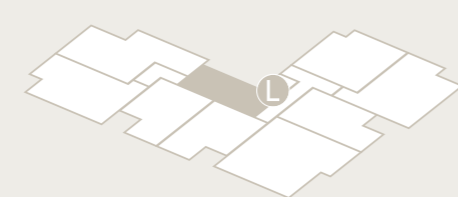
First Floor



Second Floor



Third Floor

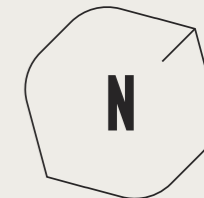




TWO BEDROOM APARTMENT

APARTMENT 09

Total Internal Area 74.9m² / 806ft²



LIVING/KITCHEN/DINING

7.13m x 4.24m 23'5" x 13'11"

BEDROOM I

4.63m x 3.54m 15'2" x 11'7"

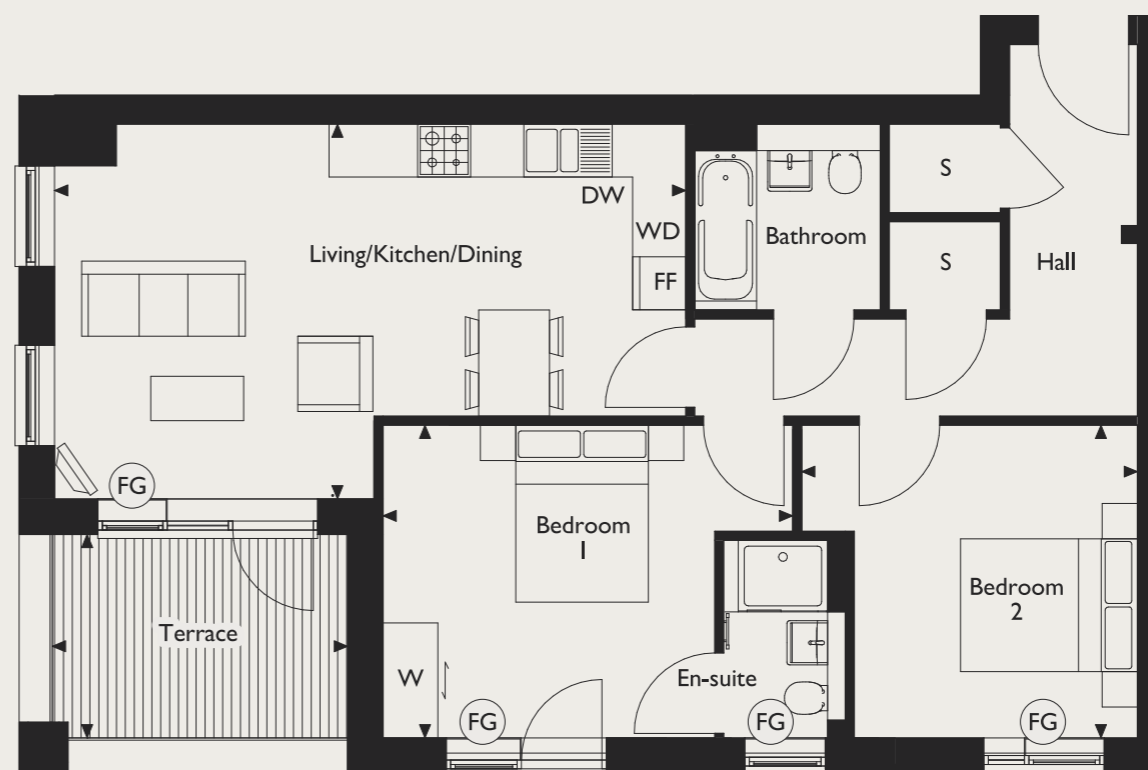
BEDROOM I

3.80m x 3.54m 12'5" x 11'7"

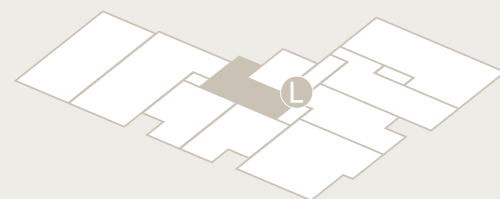
TERRACE

3.34m x 2.30m 10'11" x 7'6"

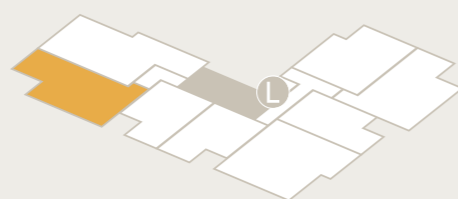
DW Dishwasher **FF** Fridge/Freezer
WD Washer/Dryer **FG** Frosted Glass
W Wardrobes **S** Storage **L** Lift



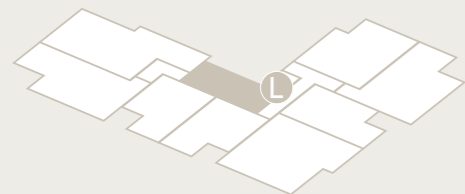
Ground Floor



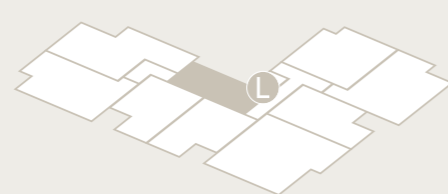
First Floor



Second Floor



Third Floor

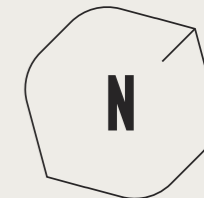




TWO BEDROOM APARTMENT

APARTMENT 17

Total Internal Area 74.9m² / 806ft²



LIVING/KITCHEN/DINING

7.13m x 4.24m 23'5" x 13'11"

BEDROOM I

4.63m x 3.54m 15'2" x 11'7"

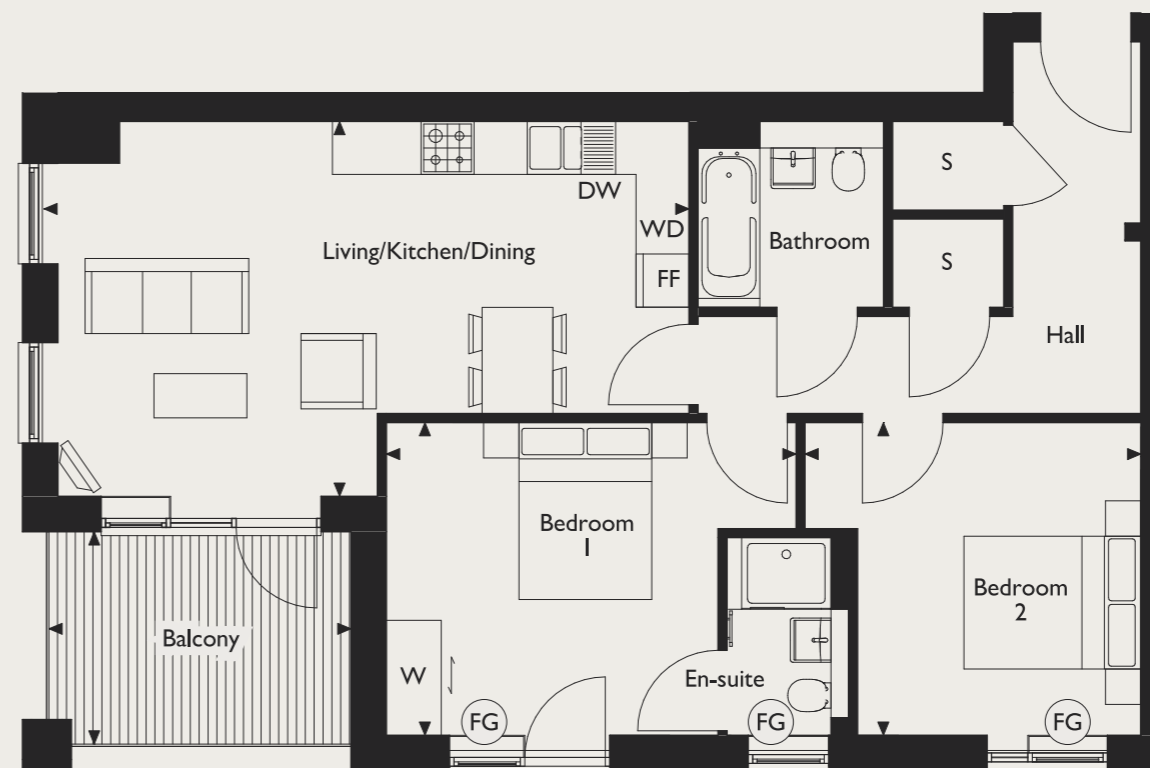
BEDROOM I

3.80m x 3.54m 12'5" x 11'7"

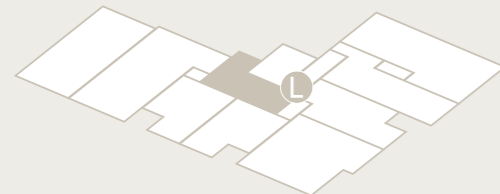
BALCONY

3.41m x 2.40m 11'2" x 7'10"

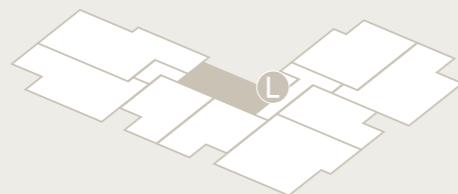
DW Dishwasher **FF** Fridge/Freezer
WD Washer/Dryer **FG** Frosted Glass
W Wardrobes **S** Storage **L** Lift



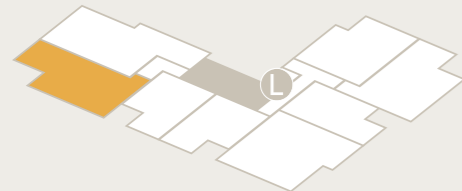
Ground Floor



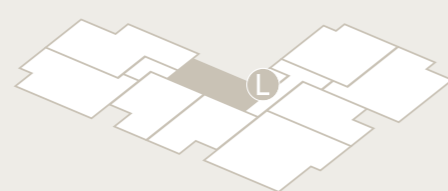
First Floor



Second Floor



Third Floor

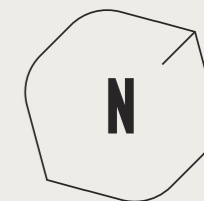




TWO BEDROOM APARTMENT

APARTMENT 15

Total Internal Area 78.3m² / 842ft²



LIVING/KITCHEN/DINING

7.22m x 4.11m 23'8" x 13'5"

BEDROOM 1

3.88m x 3.57m 12'9" x 11'8"

BEDROOM 1

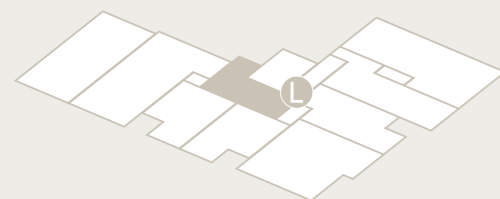
3.57m x 3.48m 11'8" x 11'5"

TERRACE

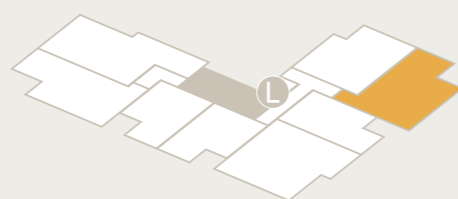
3.11m x 2.41m 10'2" x 7'11"

DW Dishwasher **FF** Fridge/Freezer
WD Washer/Dryer **FG** Frosted Glass
W Wardrobes **S** Storage **L** Lift

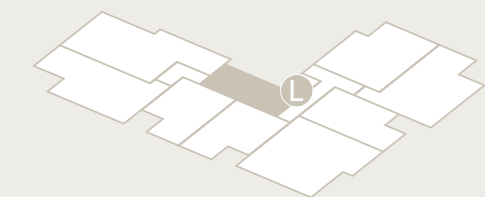
Ground Floor



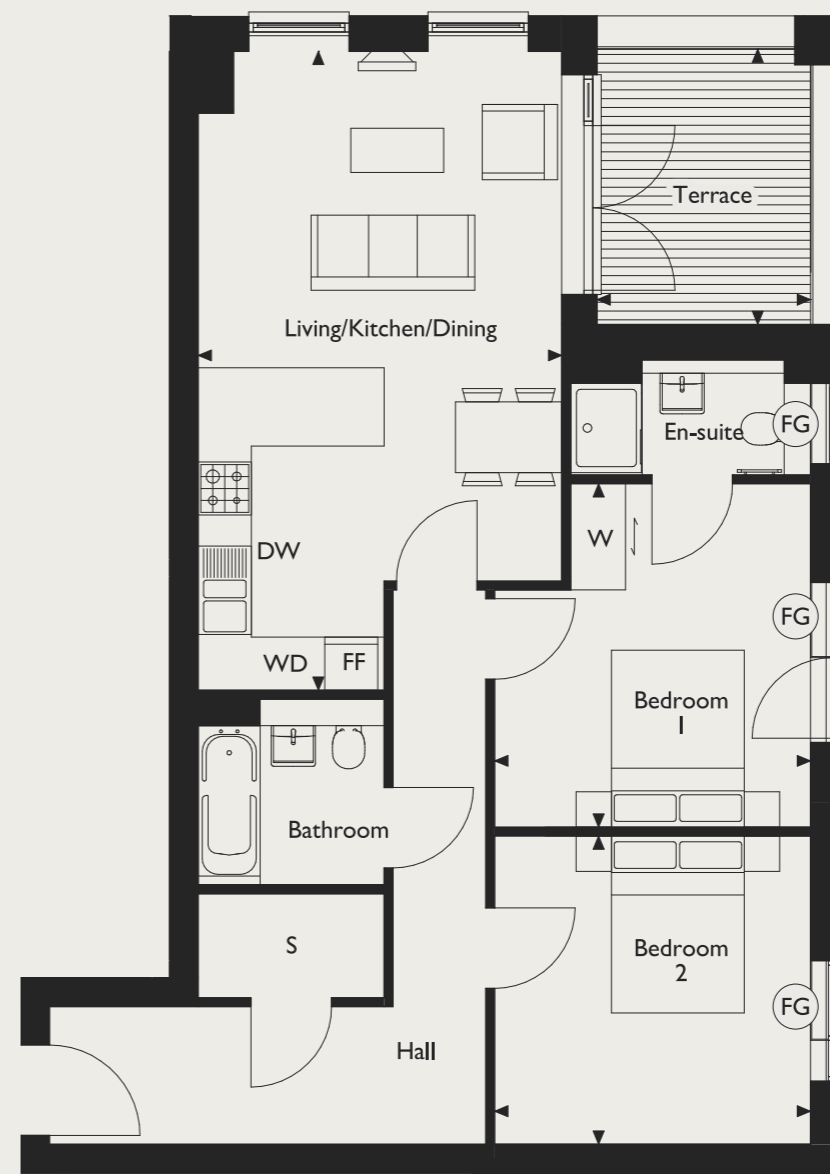
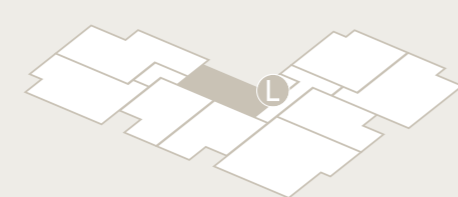
First Floor



Second Floor



Third Floor

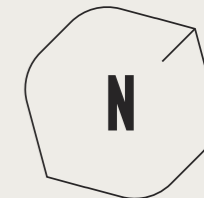




TWO BEDROOM APARTMENT

APARTMENT 23

Total Internal Area 78.3m² / 842ft²



LIVING/KITCHEN/DINING

7.22m x 4.11m 23'8" x 13'5"

BEDROOM I

3.88m x 3.57m 12'9" x 11'8"

BEDROOM I

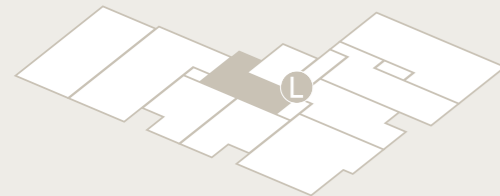
3.57m x 3.48m 11'8" x 11'5"

BALCONY

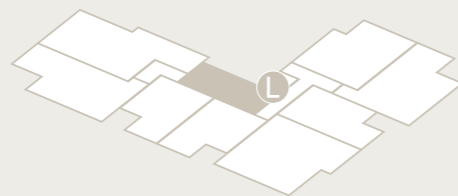
3.19m x 2.51m 10'5" x 8'3"

DW Dishwasher **FF** Fridge/Freezer
WD Washer/Dryer **FG** Frosted Glass
W Wardrobes **S** Storage **L** Lift

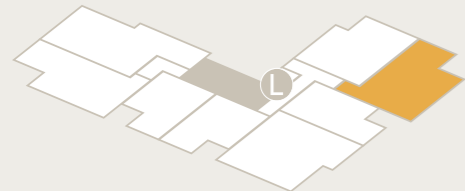
Ground Floor



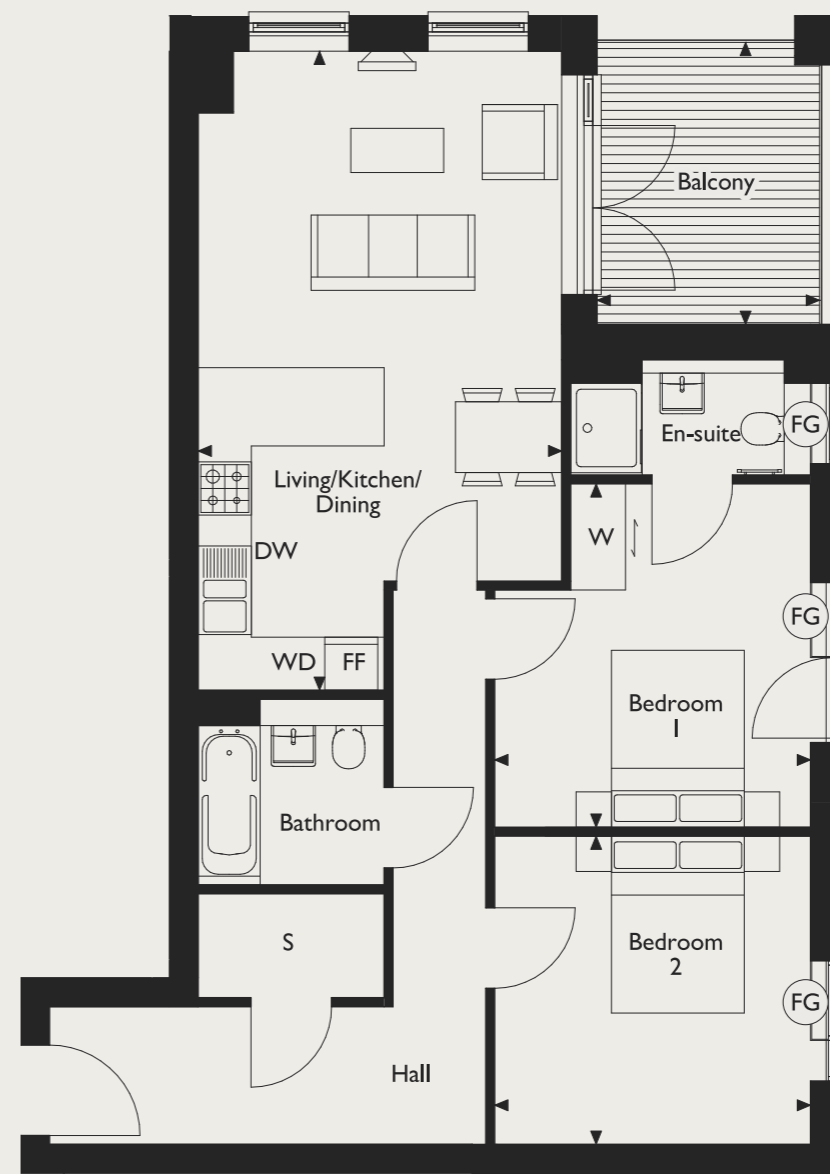
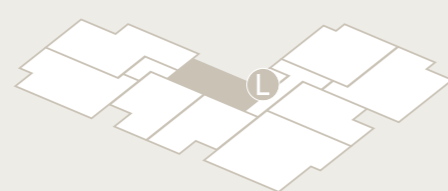
First Floor



Second Floor



Third Floor





TWO BEDROOM APARTMENT

APARTMENT 01

Total Internal Area 85.5m² / 920ft²

LOUNGE

5.33m x 2.99m 17'6" x 9'10"

KITCHEN/DINING

4.87m x 2.87m 16'0" x 9'5"

BEDROOM 1

6.62m x 3.00m 21'8" x 9'10"

BEDROOM 2

3.94m x 2.53m 12'11" x 8'X3"

GARDEN

6.13m x 4.67m 20'1" x 15'4"

PATIO

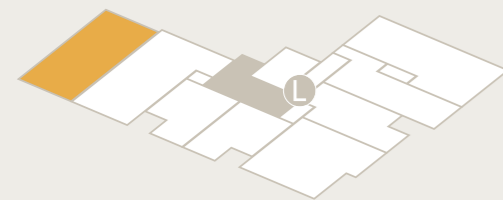
5.91m X 1.77m 19'4" X 5'9"

FRONT PATIO

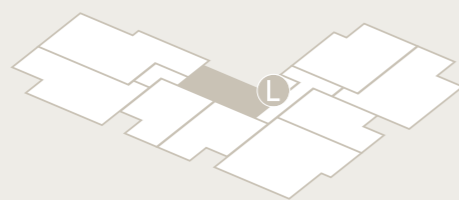
4.41m x 2.39m 14'5" X 7'10"

DW Dishwasher FF Fridge/Freezer WD Washer/Dryer
TU Tall Unit FG Frosted Glass W Wardrobes L Lift S Storage

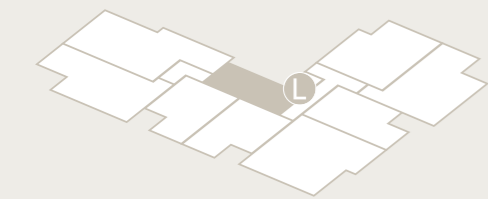
Ground Floor



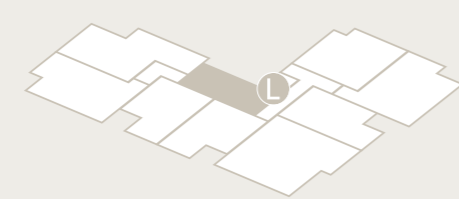
First Floor



Second Floor



Third Floor



Wheelchair adaptable home

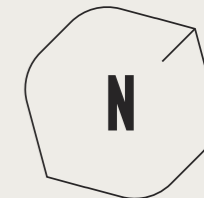




TWO BEDROOM APARTMENT

APARTMENT 07

Total Internal Area 96.9m² / 1043ft²



LOUNGE

4.52m x 4.15m 14'10" x 13'7"

KITCHEN/DINING

5.90m x 2.90m 19'4" x 9'6"

BEDROOM 1

6.04m x 3.66m 19'10" x 12'0"

BEDROOM 2

4.23m x 2.93m 13'10" x 9'7"

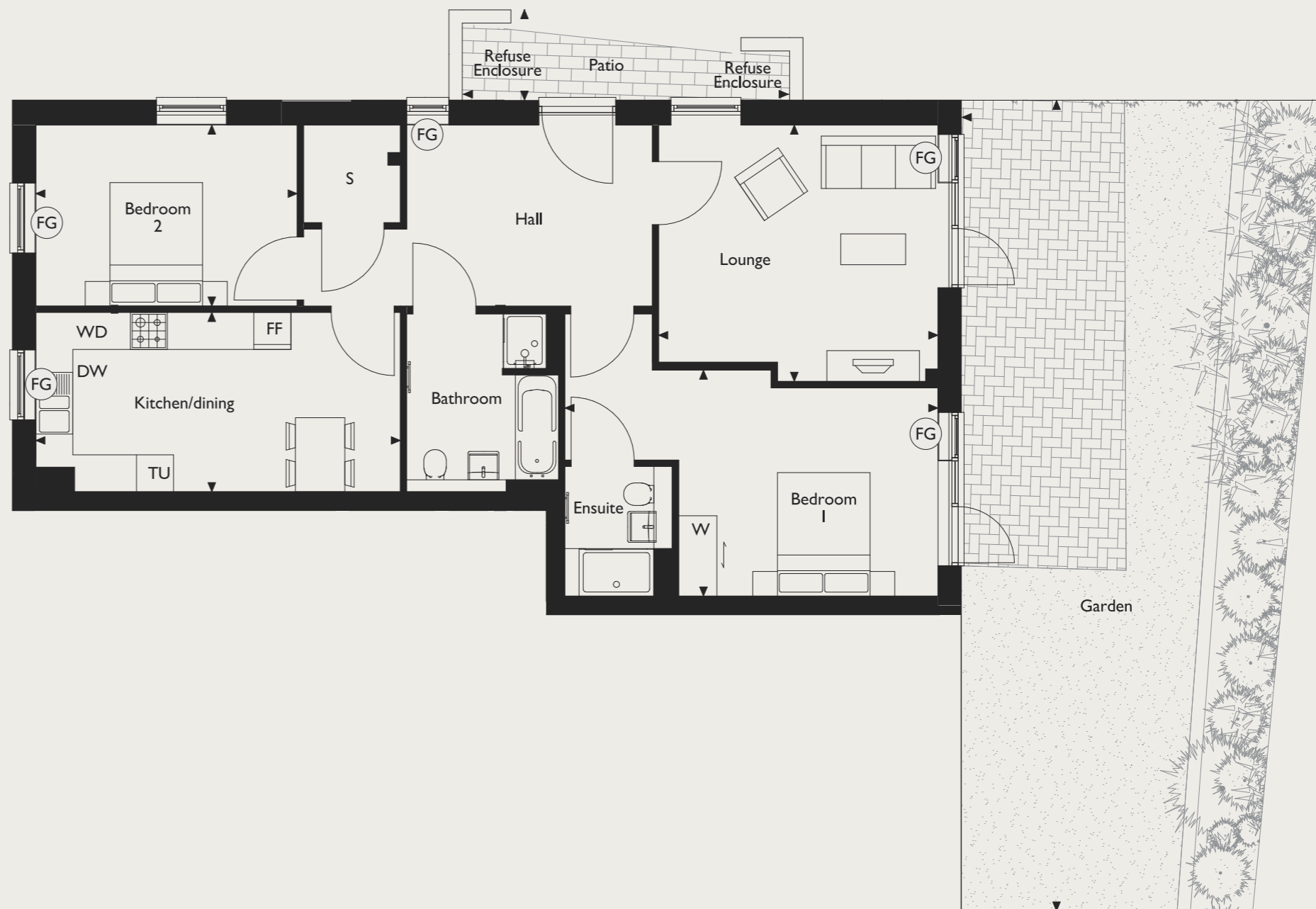
GARDEN

13.13m x 5.95m 43'1" x 19'6"

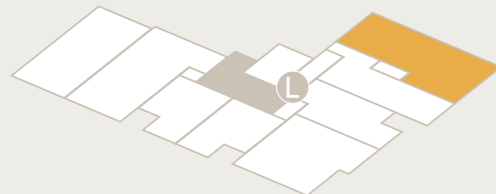
PATIO

5.30m X 1.25m 17'4" X 4'1"

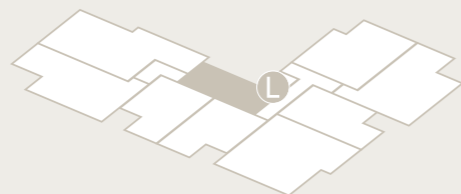
DW Dishwasher FF Fridge/Freezer WD Washer/Dryer
TU Tall Unit FG Frosted Glass W Wardrobes L Lift S Storage



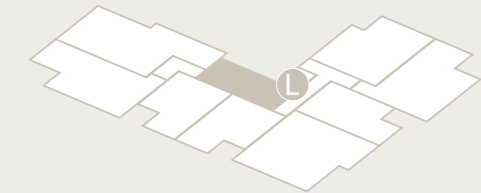
Ground Floor



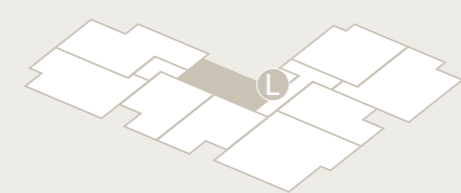
First Floor



Second Floor



Third Floor



Wheelchair adaptable home



TWO BEDROOM APARTMENT

APARTMENT 02

Total Internal Area 97.8m² / 1052ft²

LOUNGE

5.80m x 3.22m 19'0" x 10'7"

KITCHEN/DINING

4.62m x 3.17m 15'2" x 10'5"

BEDROOM 1

4.90m x 3.30m 16'1" x 10'3"

BEDROOM 2

4.43m x 2.95m 14'6" x 9'8"

GARDEN

6.81m x 4.19m 22'4" x 13'9"

PATIO

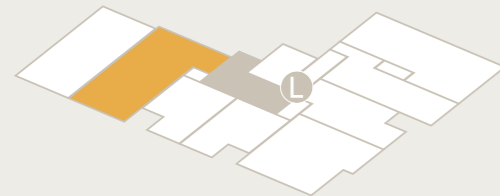
7.51m x 1.24m 24'7" x 4'0"

DW Dishwasher **FF** Fridge/Freezer

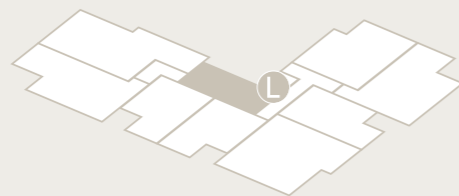
WD Washer/Dryer **FG** Frosted Glass

W Wardrobes **S** Storage **L** Lift

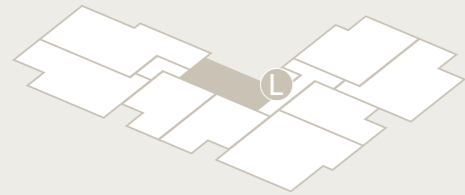
Ground Floor



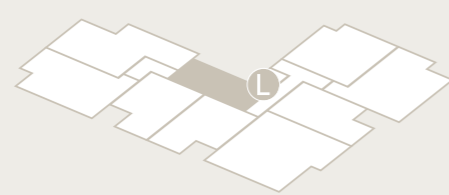
First Floor



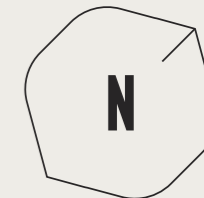
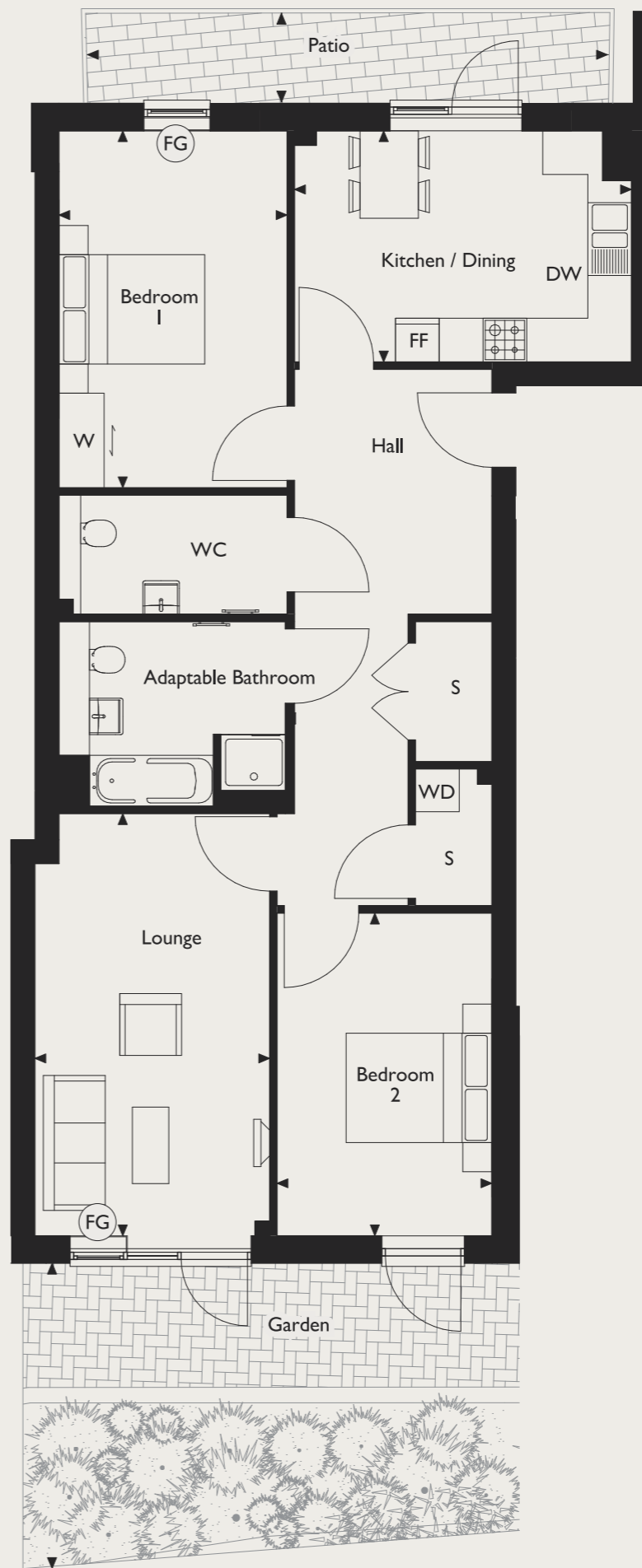
Second Floor



Third Floor



Wheelchair adaptable home

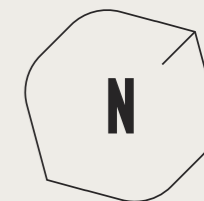




THREE BEDROOM APARTMENT

APARTMENTS 08 & 16

Total Internal Area 90.9m² / 978ft²



LIVING/KITCHEN/DINING

7.06m x 4.49m 23'2" x 14'9"

BEDROOM 1

5.02m x 3.35m 16'5" x 11'0"

BEDROOM 2

4.80m x 3.17m 15'9" x 10'5"

BEDROOM 3

4.10m x 2.10m 13'5" x 6'10"

BALCONY

4.04m x 2.02m 13'3" x 6'7"

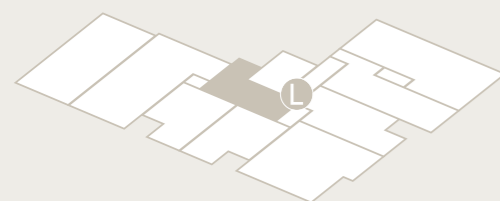
DW Dishwasher **FF** Fridge/Freezer

WD Washer/Dryer **TU** Tall Unit

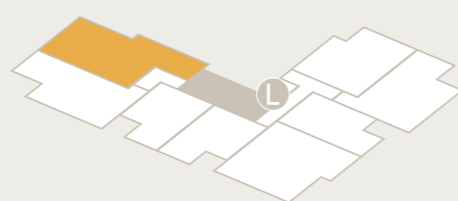
FG Frosted Glass **W** Wardrobes **L** Lift

S Storage

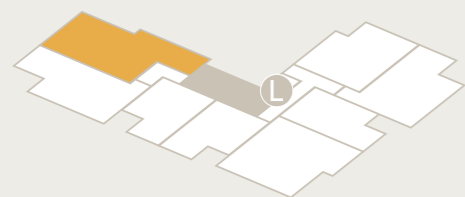
Ground Floor



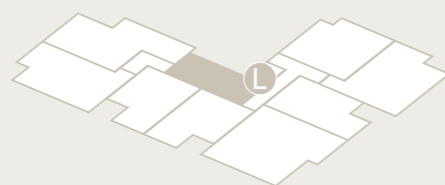
First Floor Apartment 08



Second Floor Apartment 16



Third Floor

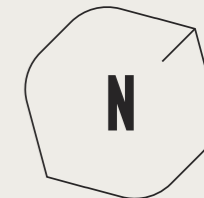




THREE BEDROOM APARTMENT

APARTMENTS 12, 20 & 28

Total Internal Area 92.2m² / 992ft²



LIVING/KITCHEN/DINING

5.47m x 5.31m 17'11" x 17'5"

BEDROOM 1

5.79m x 2.78m 19'0" x 9'1"

BEDROOM 2

5.18m x 2.78m 17'11" x 9'1"

BEDROOM 3

4.51m x 1.98m 14'9" x 6'6"

BALCONY

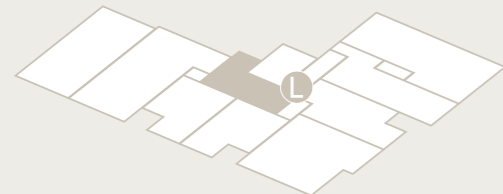
5.44m x 1.65m 17'10" x 5'5"

DW Dishwasher FF Fridge/Freezer

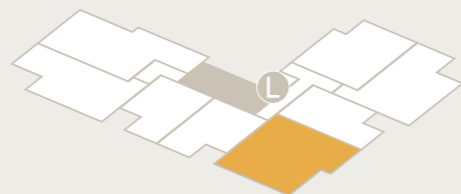
WD Washer/Dryer FG Frosted Glass

W Wardrobes S Storage L Lift

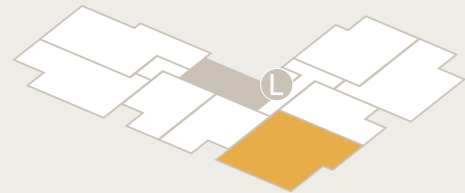
Ground Floor



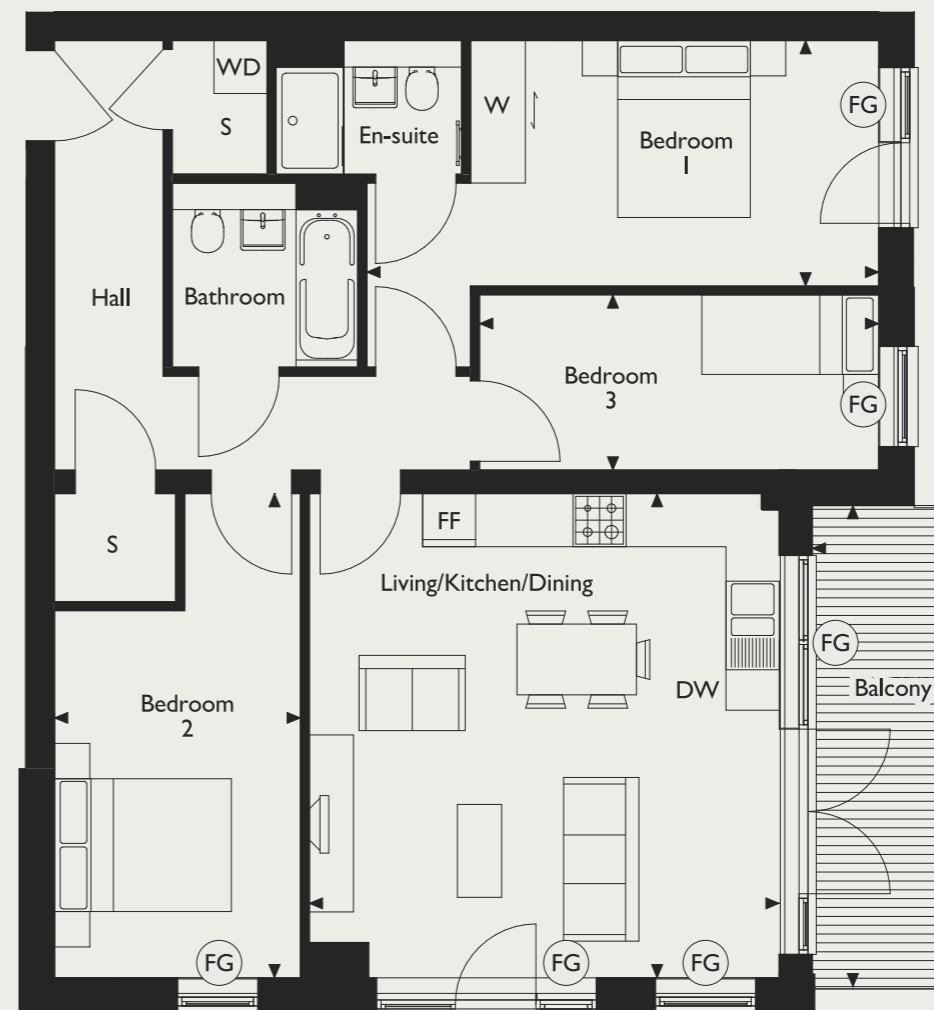
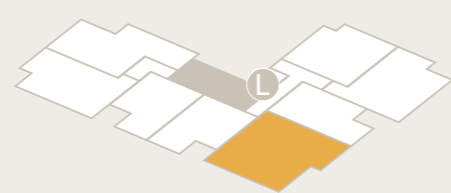
First Floor Apartment 12



Second Floor Apartment 20



Third Floor Apartment 28

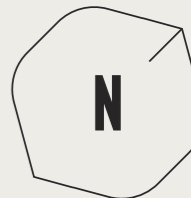




THREE BEDROOM APARTMENT

APARTMENT 05

Total Internal Area 92.2m² / 992ft²



LIVING/KITCHEN/DINING

5.47m x 5.31m 17'11" x 17'5"

BEDROOM 1

5.79m x 2.78m 19'0" x 9'1"

BEDROOM 2

5.18m x 2.78m 17'11" x 9'1"

BEDROOM 3

4.51m x 1.98m 14'9" x 6'6"

GARDEN

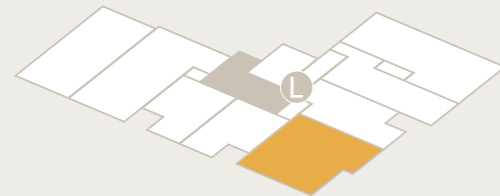
14.6m x 13.6m 47'10" x 44'8"

DW Dishwasher FF Fridge/Freezer

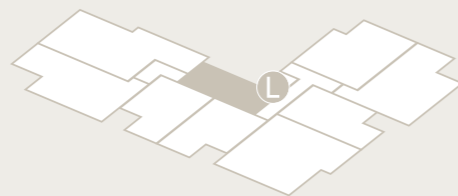
WD Washer/Dryer FG Frosted Glass

W Wardrobes S Storage L Lift

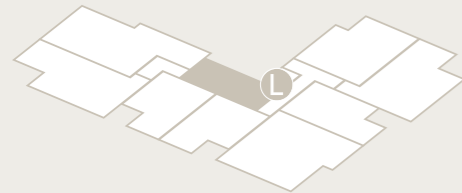
Ground Floor



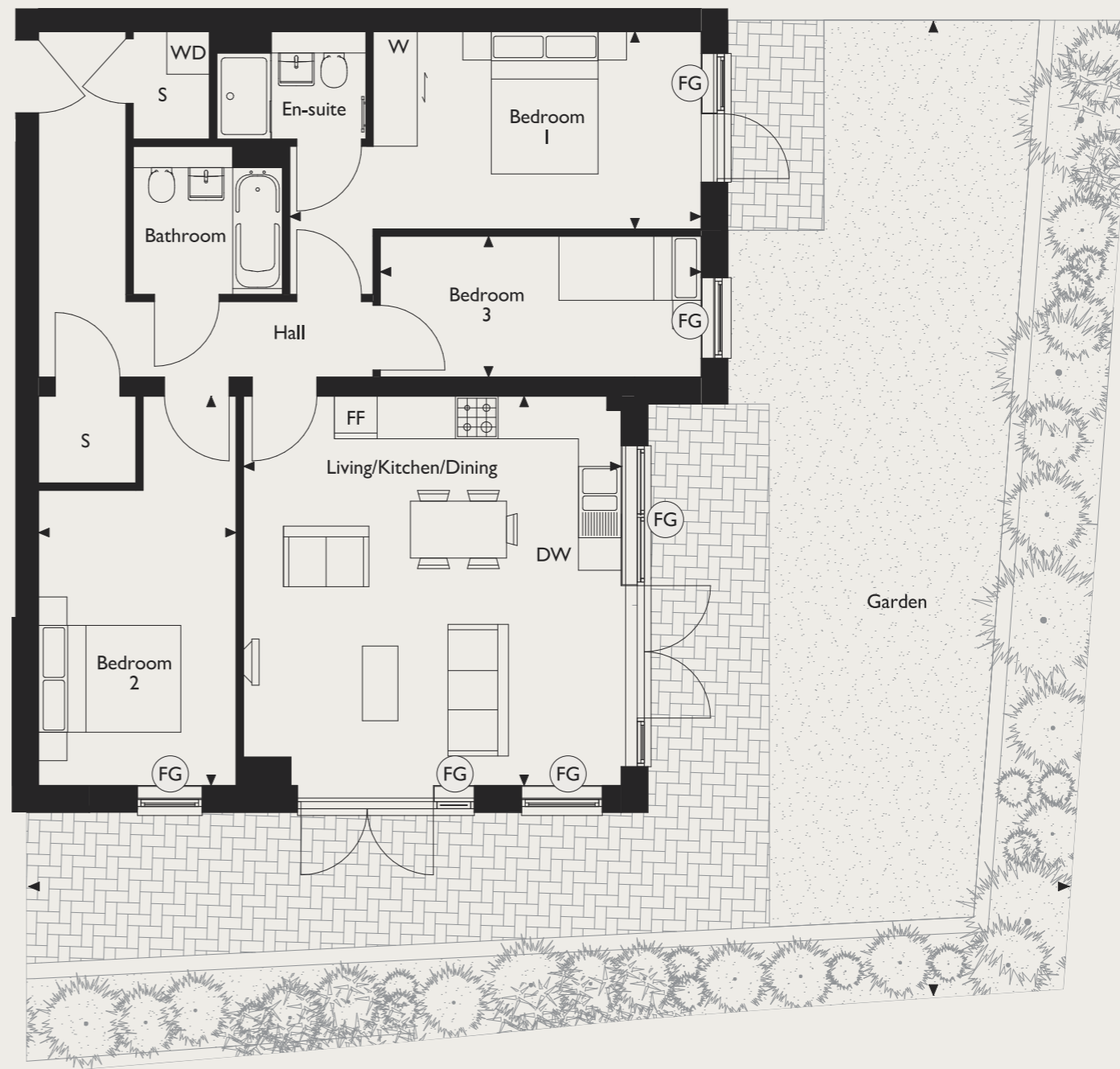
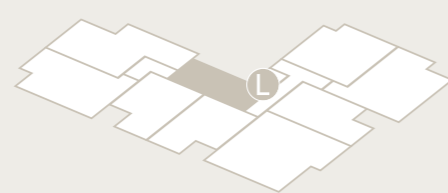
First Floor



Second Floor



Third Floor





29130

Computer generated artist impression

STONELEA GARDENS E11



AWARD WINNING PEABODY

Peabody has over 150 years of history, experience and expertise. With over 66,000 homes, we are one of the largest housing providers in London and the south-east.

We deliver services to 133,000 residents, 18,000 care and support customers, and the wider communities in which we work.

Our mission is to help people make the most of their lives. We focus on those who need our help the most and our ambition is to create communities that are healthier, wealthier and happier. We build great quality places and have ambitious plans to deliver 3,300 new homes each year.



Every care has been taken in the preparation of this brochure. The details contained herein are for guidance only and should not be relied upon as exactly describing any of the particular material illustrated or written by any order under the Consumer Protection from Unfair Trading Regulations 2008. This information does not constitute a contract, part of a contract or warranty. The developer operates a programme of continuous product development. Features, internal and external, may vary from time to time and may differ from those shown in the brochure. Computer generated images and photography used within this brochure are indicative only. Stonelea Gardens is a marketing name and may not form part of the postal address for these properties. Detail correct at time of going to print, October 2019.



Fish Island Village, Hackney Wick
Peabody's award-winning joint venture with Hill





 Peabody

stoneleagardens.co.uk

020 7021 4842