



COLINDALE
GARDENS

LONDON NW9

JASMIN & JAVELIN HOUSE
KEW & KENNINGTON COURT



COLINDALE
GARDENS

LONDON NW9

WELCOME

We are delighted to introduce Jasmin & Javelin House and Kew & Kennington Court to Colindale Gardens, a selection of studios, 1, 2, 3 and 4 bedroom apartments and duplexes of exemplary design.

All apartments and duplexes feature a private balcony or terrace, many with views over the podium gardens. Internal layouts include an open plan kitchen/dining/living room, and in the 2, 3 and 4 bedroom apartments the master bedroom is en suite.

Colindale Gardens is a community in north west London, with nine acres of open green space and first class residents' amenities.

Access to central London couldn't be easier, with Colindale tube station less than five minutes' walk away.

FRESH OUTLOOK • LONDON LIFESTYLE

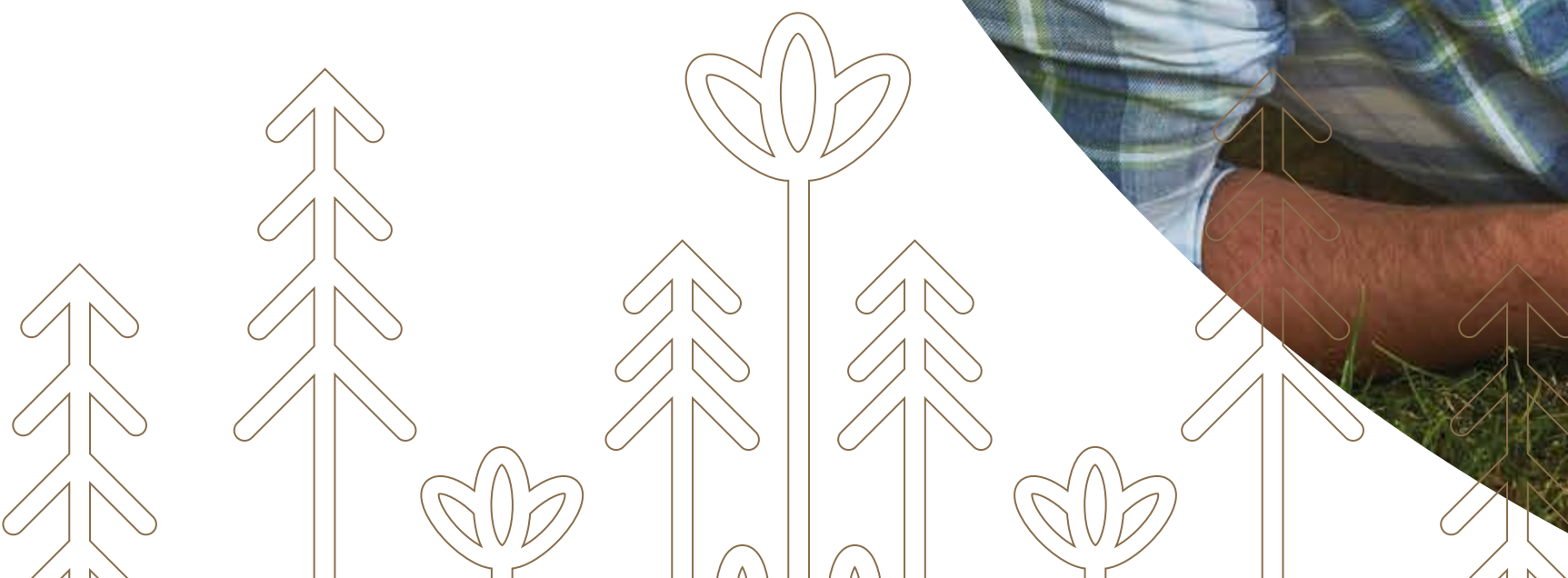
THE COLINDALE GARDENS LIFESTYLE

The Colindale Gardens lifestyle has something for everyone. There's a 24 hour concierge, an essential service for busy people, located in the boutique hotel style reception area. The residents' gym will appeal to anyone who loves to keep fit, or relax in the sauna and steam room.

Parks and open areas are another major feature. At the heart of Colindale Gardens is a stunning new four acre park, which includes a woodland adventure gym. Children also have dedicated play areas elsewhere in the development.

The new Colindale Gardens Primary School is well on its way to completion. It will open in 2020, taking 600 pupils in a 3-form entry system. Older children have a choice of secondary schools in Colindale with Ofsted 'Good' and 'Outstanding' ratings.

Shops, restaurants, cafés, sports pitches, a crèche and other residents' facilities will be on site, making Colindale Gardens a true community and a wonderful place to live.



COLINDALE TUBE STATION
Northern Line, direct to
West End and City

PROPOSED RETAIL HUB
for convenience stores,
coffee shops and restaurants

KEW & KENNINGTON COURT

JASMIN & JAVELIN HOUSE

GYM AND CONCIERGE

PEEL SQUARE

SALES AND MARKETING SUITE

WOODLAND ADVENTURE PLAY

ORCHARD GARDEN

4 ACRE PARK

NEW SCHOOL
3 form entry,
600 pupil primary school

THE QUALITY YOU EXPECT FROM REDROW

Jasmin & Javelin House and Kew & Kennington Court are designed for contemporary living, with a choice of studios, 1, 2, 3 and 4 bedroom apartments and duplexes.

Interior layouts have been carefully designed to maximise space and flexibility, complemented by a stylish, high quality specification.

Redrow's customary attention to detail can be seen throughout, evident in everything from integrated kitchen appliances, to stylish modern sanitaryware, flooring and lighting.



Flexible open plan living layouts

Open plan kitchen, dining and living spaces are ideal for family living and entertaining friends at home.



Carefully chosen

Our close attention to detail means you will have the best of everything: from kitchen appliances to bathrooms.



Superior finish

Quality fixtures and fittings and a high specification give these new homes a premium feel.



Customer service

Always a priority for Redrow, making buying your new home a pleasure.

COOK AND DINE IN STYLE

Everyone will find cooking and entertaining a great pleasure a joy in the open plan kitchen/ dining/living room.

The smart gloss cabinets have contrasting laminate or stone worktops*, and back painted glass splashbacks, while the latest integrated appliances help make light work of all kitchen tasks. These thoughtfully planned kitchens merge seamlessly into the living room providing continuity as well as a practicality. Underfloor heating provides the ultimate comfort: once you've experienced it, nothing else will do.

* Optional extra available at an additional cost



Photography of a kitchen at a similar development, indicative only.





COLINDALE
GARDENS
LONDON NW9



SPECIFICATION

KITCHEN

- Interior designed fitted kitchens
- Gloss cabinet doors with soft close, handle-less design and under cupboard lighting
- Slimline laminate worktop
- Porcelain tiles with glass behind hob
- Stainless steel sink with chrome mixer tap
- Siemens single oven to one bed apartments, double oven in tall housing to two and three bed apartments
- Siemens four zone ceramic hob with integrated telescopic hood
- Integrated dishwasher*
- 50/50 fridge freezer
- Free standing washer-dryer located in hallway cupboard**
- Recycling bin
- Cutlery drawer inserts

BATHROOM / EN SUITE

- Porcelain wall and floor tiles
- Bespoke designed vanity wall unit with mirrored door
- Wall hung white designer sanitaryware
- Wall mounted WC with concealed cistern and polished chrome dual flush button
- White bath with timber effect bath panel
- White shower tray with sliding shower door (to all en suites)
- Shaver socket concealed in cabinet
- Polished chrome electric heated towel rail

ELECTRICS

- Chrome switches to kitchen
- LED downlights to hallway, kitchen/living/dining area and bathrooms
- Pendant lighting to all bedrooms
- Wiring for digital TV and wiring only for Sky Q and Virgin to living area
- Colour video door entry system
- Fob entry system to apartment block

JOINERY

- Oak veneer apartment entrance and internal doors
- Feature skirtings and architraves

HEATING

- Underfloor heating throughout

COMMUNAL AREAS

- Landscaped gardens
- Lift to all floors
- Concierge service†
- Access to residents-only gym, sauna, and steam room located in separate block

GENERAL

- 2 year Redrow Warranty
- 10 year LABC building warranty
- 999 year lease from January 2018
- Parking available at additional cost***
- Balcony or terrace area to all apartments with decking and external lighting

OPTIONAL EXTRAS†

- Carpet to all bedrooms, stairs and landings
- Fitted wardrobes to all bedrooms with sliding door, hanging rail and high level shelf to bedroom 1
- Silestone splashback behind hob
- Amtico Spacia flooring to kitchen/living/dining areas and hallway

* Dishwashers vary in size

** Location of washer-dryers may vary

*** Please ask a sales consultant for further info on parking

† Concierge service will be in a central location within the development

‡ Optional extras available at an additional cost. Wardrobe sizes may vary, additional wardrobes available on selected plots only

Your attention is drawn to the fact it may not be possible to obtain the products as referred to in the specification. In such cases, a similar alternative will be provided. Redrow reserve the right to make these changes. Please ask a sales consultant for further information



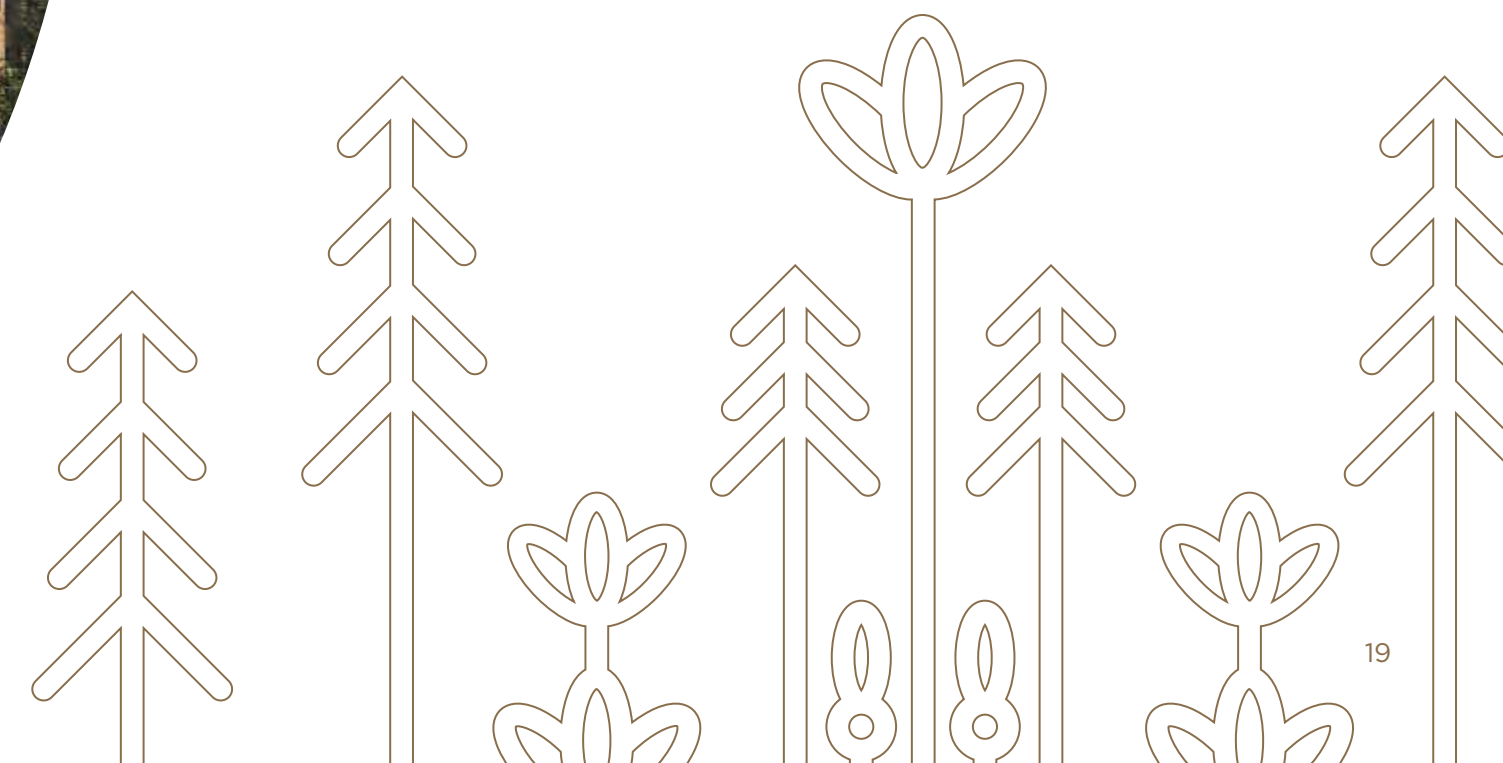
Photography of a bathroom at a similar development, indicative only.



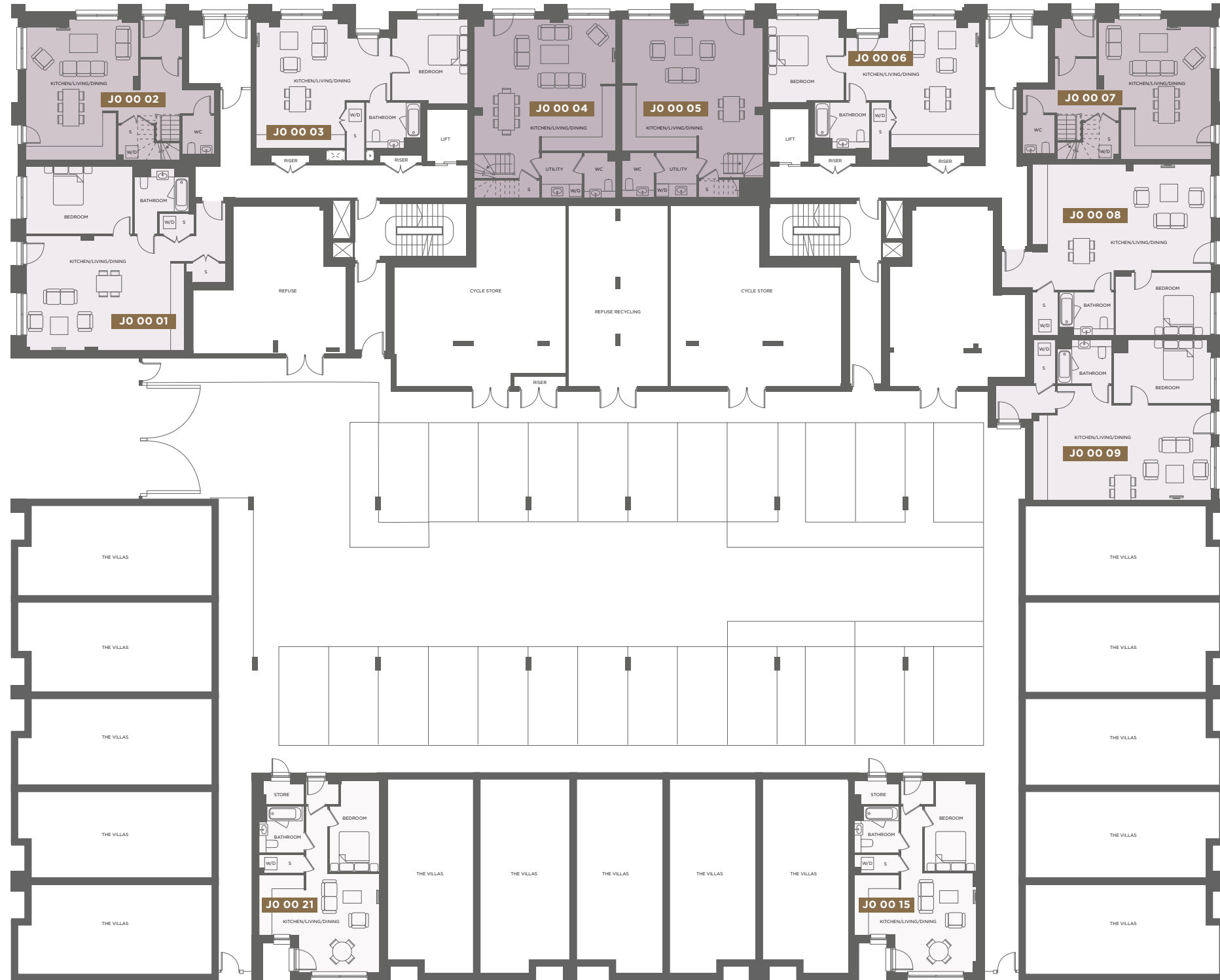
INTRODUCING JASMIN & JAVELIN HOUSE

Jasmin & Javelin House form part of the Family Quarter, and contains 87 studios, 1, 2, 3 and 4 bedroom apartments and duplexes.

It overlooks the main boulevard and encloses a private podium garden.



JASMIN & JAVELIN HOUSE GROUND FLOOR



PLOT: JO 00 01	TYPE 001	
1 BEDROOM APARTMENT		
Kitchen/Living/Dining	7.55 m x 5.45 m	24' 7" x 17' 8"
Bedroom	5.06 m x 3.21 m	16' 6" x 10' 5"
Total Internal Area	75.7 sq m	814.8 sq ft

PLOTS: JO 00 02, JO 00 07 (LOWER LEVEL)	TYPES 040, 140	
3 BEDROOM DUPLEX		
Kitchen/Living/Dining	6.70 m x 5.34 m	21' 9" x 17' 5"
Internal Area (Lower Level)	55.8 sq m	600.6 sq ft
Total Internal Area	126.1 sq m	1357.3 sq ft

PLOTS: JO 00 03, JO 00 06	TYPES 002, 102	
1 BEDROOM APARTMENT		
Kitchen/Living/Dining	6.34 m x 6.15 m	20' 8" x 20' 1"
Bedroom	3.87 m x 3.55 m	12' 6" x 11' 6"
Total Internal Area	57.5 sq m	618.9 sq ft

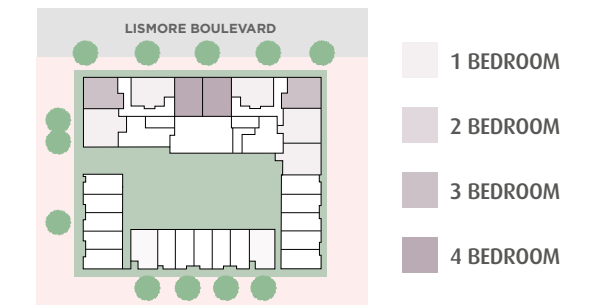
PLOTS: JO 00 04, JO 00 05 (LOWER LEVEL)	TYPES 041, 141	
4 BEDROOM DUPLEX		
Kitchen/Living/Dining	6.73 m x 6.29 m	22' 0" x 20' 6"
Internal Area (Lower Level)	58.9 sq m	633.9 sq ft
Total Internal Area	153.2 sq m	1649.4 sq ft

PLOT: JO 00 08	TYPE 003	
1 BEDROOM APARTMENT		
Kitchen/Living/Dining	8.46 m x 4.99 m	27' 7" x 16' 3"
Bedroom	4.52 m x 2.95 m	14' 8" x 9' 6"
Total Internal Area	72.8 sq m	783.6 sq ft

PLOT: JO 00 09	TYPE 004	
1 BEDROOM APARTMENT		
Kitchen/Living/Dining	8.48 m x 4.49 m	27' 8" x 14' 7"
Bedroom	4.64 m x 2.95 m	15' 2" x 9' 6"
Total Internal Area	68.4 sq m	736.2 sq ft

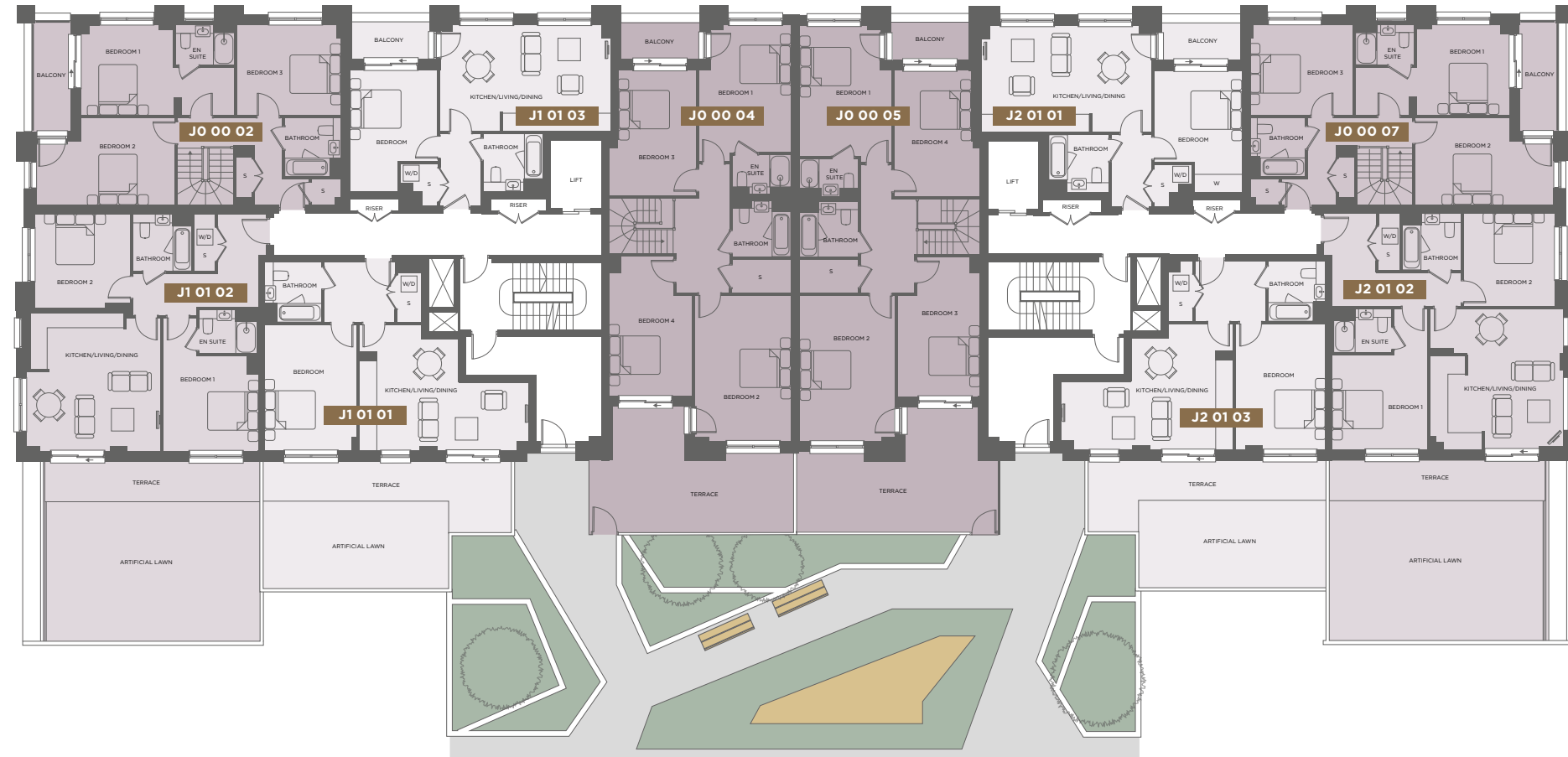
PLOT: JO 00 15	TYPE 060	
1 BEDROOM APARTMENT		
Kitchen/Living/Dining	5.79 m x 4.69 m	18' 9" x 15' 3"
Bedroom	4.15 m x 2.44 m	13' 6" x 8' 0"
Total Internal Area	50.1 sq m	539.2 sq ft

PLOT: JO 00 21	TYPE 061	
1 BEDROOM APARTMENT		
Kitchen/Living/Dining	5.79 m x 4.69 m	18' 9" x 15' 3"
Bedroom	4.15 m x 2.44 m	13' 6" x 8' 0"
Total Internal Area	50.4 sq m	542.5 sq ft



- KEY**
- S Service Cupboard
 - W Wardrobe
 - W/D Washer/Dryer
 - Sliding Door

JASMIN & JAVELIN HOUSE FIRST FLOOR



PLOTS: JO 00 02, JO 00 07 (UPPER LEVEL) TYPES 040, 140 3 BEDROOM DUPLEX		
Bedroom 1	5.72 m x 3.35 m	18' 7" x 10' 9"
Bedroom 2	5.17 m x 3.22 m	16' 9" x 10' 5"
Bedroom 3	3.85 m x 3.35 m	12' 6" x 10' 9"
Internal Area (Upper Level)	70.3 sq m	756.7 sq ft
Total Internal Area	126.1 sq m	1357.3 sq ft

PLOTS: JO 00 04, JO 00 05 (UPPER LEVEL) TYPES 041, 141 4 BEDROOM DUPLEX		
Bedroom 1	5.08 m x 3.41 m	16' 6" x 11' 1"
Bedroom 2	5.42 m x 3.55 m	17' 7" x 11' 6"
Bedroom 3	4.67 m x 3.17 m	15' 3" x 10' 4"
Bedroom 4	5.19 m x 3.04 m	17' 0" x 9' 9"
Internal Area (Upper Level)	94.3 sq m	1015.0 sq ft
Total Internal Area	153.2 sq m	1649.4 sq ft

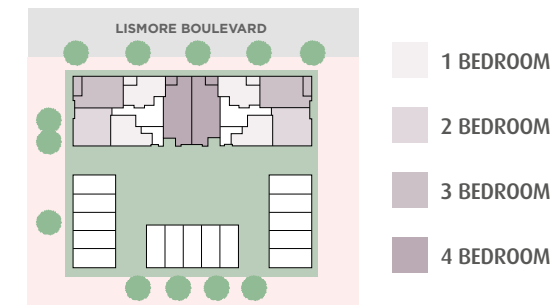
PLOT: J1 01 01 TYPE 007 1 BEDROOM APARTMENT		
Kitchen/Living/Dining	6.28 m x 4.69 m	20' 6" x 15' 3"
Bedroom	4.69 m x 3.37 m	15' 3" x 11' 0"
Total Internal Area	53.7 sq m	578 sq ft

PLOT: J1 01 02 TYPE 005 2 BEDROOM APARTMENT		
Kitchen/Living/Dining	4.99 m x 4.97 m	16' 3" x 16' 3"
Bedroom 1	4.97 m x 3.48 m	16' 3" x 11' 4"
Bedroom 2	3.54 m x 3.41 m	11' 6" x 11' 1"
Total Internal Area	76.5 sq m	823.49 sq ft

PLOTS: J1 01 03, J2 01 01 TYPES 021, 121 1 BEDROOM APARTMENT		
Kitchen/Living/Dining	6.34 m x 3.95 m	20' 8" x 12' 9"
Bedroom	4.48 m x 3.26 m	14' 6" x 10' 6"
Total Internal Area	51.2 sq m	551.1 sq ft

PLOT: J2 01 02 TYPE 006 2 BEDROOM APARTMENT		
Kitchen/Living/Dining	5.25 m x 4.97 m	17' 2" x 16' 3"
Bedroom 1	5.25 m x 3.51 m	17' 2" x 11' 5"
Bedroom 2	3.41 m x 3.40 m	11' 1" x 11' 1"
Total Internal Area	76.4 sq m	822.3 sq ft

PLOT: J2 01 03 TYPE 008 BEDROOM APARTMENT		
Kitchen/Living/Dining	6.38 m x 4.69 m	20' 9" x 15' 3"
Bedroom	4.69 m x 3.27 m	15' 3" x 10' 7"
Total Internal Area	53.8 sq m	579.1 sq ft



- KEY**
- S Service Cupboard
 - W Wardrobe
 - W/D Washer/Dryer
 - Sliding Door

JASMIN & JAVELIN HOUSE SECOND FLOOR



COLINDALE
GARDENS
LONDON NW9



PLOTS: J1 02 01, J2 02 06 TYPES 027, 127 3 BEDROOM APARTMENT		
Kitchen/Living/Dining	9.47 m x 3.83 m	31' 0" x 12' 5"
Bedroom 1	6.29 m x 2.98 m	20' 6" x 9' 7"
Bedroom 2	3.60 m x 2.97 m	11' 8" x 9' 7"
Bedroom 3	5.37 m x 2.75 m	17' 6" x 9' 0"
Total Internal Area	96.2 sq m	1035.5 sq ft

PLOT: J1 02 02 TYPE 023 2 BEDROOM APARTMENT		
Kitchen/Living/Dining	6.97 m x 4.32 m	22' 8" x 14' 1"
Bedroom 1	3.75 m x 3.59 m	12' 3" x 11' 7"
Bedroom 2	3.66 m x 2.89 m	12' 0" x 9' 4"
Total Internal Area	68.3 sq m	735.1 sq ft

PLOT: J1 02 03 TYPE 024 2 BEDROOM APARTMENT		
Kitchen/Living/Dining	5.25 m x 5.08 m	17' 2" x 16' 6"
Bedroom 1	5.25 m x 3.40 m	17' 2" x 11' 1"
Bedroom 2	3.69 m x 3.41 m	12' 1" x 11' 1"
Total Internal Area	74.4 sq m	800.8 sq ft

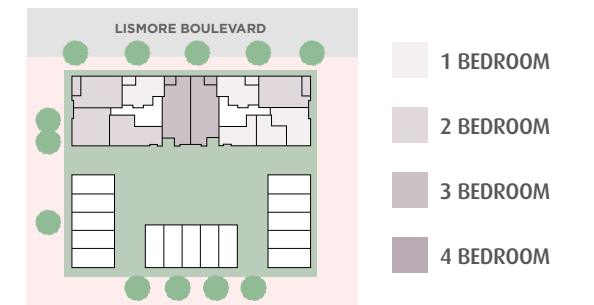
PLOTS: J1 02 04, J2 02 02 TYPES 025, 125 2 BEDROOM APARTMENT		
Kitchen/Living/Dining	7.04 m x 5.44 m	23' 0" x 17' 8"
Bedroom 1	4.75 m x 3.05 m	15' 5" x 9' 10"
Bedroom 2	3.56 m x 2.95 m	11' 6" x 9' 6"
Total Internal Area	74.2 sq m	798.6 sq ft

PLOTS: J1 02 05, J2 02 01 TYPES 026, 126 1 BEDROOM APARTMENT		
Kitchen/Living/Dining	6.00 m x 4.29 m	19' 6" x 14' 0"
Bedroom	4.48 m x 3.26 m	14' 6" x 10' 6"
Total Internal Area	52.1 sq m	560.8 sq ft

PLOT: J2 02 03 TYPE 028 1 BEDROOM APARTMENT		
Kitchen/Living/Dining	5.09 m x 4.60 m	16' 6" x 15' 0"
Bedroom	3.57 m x 3.20 m	11' 7" x 10' 4"
Total Internal Area	52.4 sq m	564 sq ft

PLOT: J2 02 04 TYPE 036 1 BEDROOM APARTMENT		
Kitchen/Living/Dining	4.84 m x 3.34 m	15' 8" x 10' 9"
Bedroom	3.65 m x 3.25 m	11' 9" x 10' 6"
Total Internal Area	42 sq m	452 sq ft

PLOT: J2 02 05 TYPE 063 1 BEDROOM APARTMENT		
Kitchen/Living/Dining	5.62 m x 4.07 m	18' 4" x 13' 3"
Bedroom	3.75 m x 3.65 m	12' 3" x 11' 9"
Total Internal Area	46.4 sq m	499.4 sq ft



- KEY**
- S Service Cupboard
 - W Wardrobe
 - W/D Washer/Dryer
 - Sliding Door

JASMIN & JAVELIN HOUSE THIRD FLOOR



PLOTS: J1 03 01, J2 03 06		
3 BEDROOM APARTMENT		
Kitchen/Living/Dining	9.80 m x 3.83 m	32' 1" x 12' 5"
Bedroom 1	6.29 m x 2.98 m	20' 6" x 9' 7"
Bedroom 2	3.60 m x 2.97 m	11' 8" x 9' 7"
Bedroom 3	5.37 m x 2.75 m	17' 6" x 9' 0"
Total Internal Area	97.2 sq m	1046.2 sq ft

PLOTS: J1 03 04, J2 03 02		
2 BEDROOM APARTMENT		
Kitchen/Living/Dining	7.04 m x 5.44 m	23' 0" x 17' 8"
Bedroom 1	4.75 m x 3.05 m	15' 5" x 10' 0"
Bedroom 2	3.56 m x 2.95 m	11' 6" x 9' 6"
Total Internal Area	74.2 sq m	798.6 sq ft

PLOT: J2 03 04		
1 BEDROOM APARTMENT		
Kitchen/Living/Dining	4.84 m x 3.34 m	15' 8" x 10' 9"
Bedroom	3.65 m x 3.25 m	11' 9" x 10' 6"
Total Internal Area	42 sq m	452 sq ft

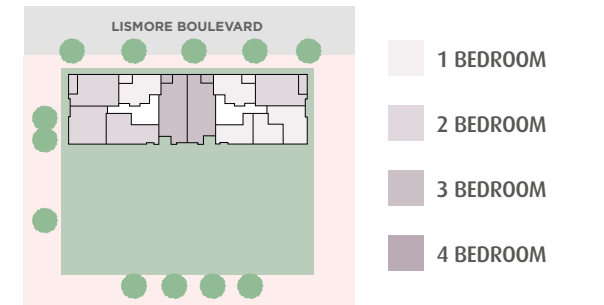
PLOT: J1 03 02		
2 BEDROOM APARTMENT		
Kitchen/Living/Dining	6.97 m x 4.32 m	22' 8" x 14' 1"
Bedroom 1	3.75 m x 3.59 m	12' 3" x 11' 7"
Bedroom 2	3.66 m x 2.89 m	12' 0" x 9' 4"
Total Internal Area	68.3 sq m	735.1 sq ft

PLOTS: J1 03 05, J2 03 01		
1 BEDROOM APARTMENT		
Kitchen/Living/Dining	6.00 m x 4.29 m	19' 6" x 14' 0"
Bedroom	4.48 m x 3.26 m	14' 6" x 10' 6"
Total Internal Area	52.1 sq m	560.8 sq ft

PLOTS: J2 03 05		
1 BEDROOM APARTMENT		
Kitchen/Living/Dining	5.62 m x 4.07 m	18' 4" x 13' 3"
Bedroom	3.75 m x 3.65 m	12' 3" x 11' 9"
Total Internal Area	46.4 sq m	499.4 sq ft

PLOT: J1 03 03		
2 BEDROOM APARTMENT		
Kitchen/Living/Dining	5.25 m x 5.08 m	17' 2" x 16' 6"
Bedroom 1	5.25 m x 3.40 m	17' 2" x 11' 1"
Bedroom 2	3.69 m x 3.41 m	12' 1" x 11' 1"
Total Internal Area	74.4 sq m	800.8 sq ft

PLOT: J2 03 03		
1 BEDROOM APARTMENT		
Kitchen/Living/Dining	5.09 m x 4.60 m	16' 6" x 15' 0"
Bedroom	3.57 m x 3.20 m	11' 7" x 10' 4"
Total Internal Area	52.4 sq m	564 sq ft



KEY
 S Service Cupboard
 W Wardrobe
 W/D Washer/Dryer
 → Sliding Door

JASMIN & JAVELIN HOUSE FOURTH FLOOR



COLINDALE GARDENS
LONDON NW9



PLOTS: J1 04 01, J2 04 06		
3 BEDROOM APARTMENT		
Kitchen/Living/Dining	9.80 m x 3.83 m	32' 1" x 12' 5"
Bedroom 1	6.29 m x 2.98 m	20' 6" x 9' 7"
Bedroom 2	3.60 m x 2.97 m	11' 8" x 9' 7"
Bedroom 3	5.37 m x 2.75 m	17' 6" x 9' 0"
Total Internal Area	97.2 sq m	1046.2 sq ft

PLOTS: J1 04 04, J2 04 02		
2 BEDROOM APARTMENT		
Kitchen/Living/Dining	7.04 m x 5.44 m	23' 0" x 17' 8"
Bedroom 1	4.75 m x 3.05 m	15' 5" x 10' 0"
Bedroom 2	3.56 m x 2.95 m	11' 6" x 9' 6"
Total Internal Area	74.2 sq m	798.6 sq ft

PLOT: J2 04 04		
1 BEDROOM APARTMENT		
Kitchen/Living/Dining	4.84 m x 3.34 m	15' 8" x 10' 9"
Bedroom	3.65 m x 3.25 m	11' 9" x 10' 6"
Total Internal Area	42 sq m	452 sq ft

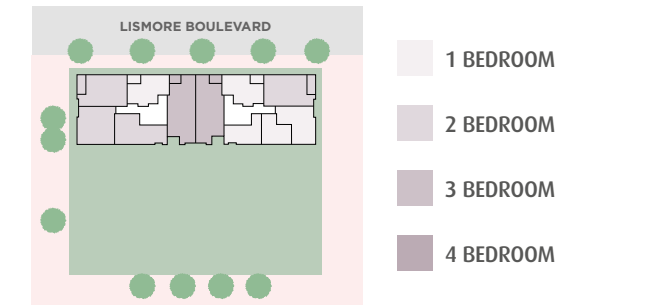
PLOT: J1 04 02		
2 BEDROOM APARTMENT		
Kitchen/Living/Dining	6.97 m x 4.32 m	22' 8" x 14' 1"
Bedroom 1	3.75 m x 3.59 m	12' 3" x 11' 7"
Bedroom 2	3.66 m x 2.89 m	12' 0" x 9' 4"
Total Internal Area	68.3 sq m	735.1 sq ft

PLOTS: J1 04 05, J2 04 01		
1 BEDROOM APARTMENT		
Kitchen/Living/Dining	6.00 m x 4.29 m	19' 6" x 14' 0"
Bedroom	4.48 m x 3.26 m	14' 6" x 10' 6"
Total Internal Area	52.1 sq m	560.8sq ft

PLOT: J2 04 05		
1 BEDROOM APARTMENT		
Kitchen/Living/Dining	5.62 m x 4.07 m	18' 4" x 13' 3"
Bedroom	3.75 m x 3.65 m	12' 3" x 11' 9"
Total Internal Area	46.4 sq m	499.4 sq ft

PLOT: J1 04 03		
2 BEDROOM APARTMENT		
Kitchen/Living/Dining	5.25 m x 5.08 m	17' 2" x 16' 6"
Bedroom 1	5.25 m x 3.40 m	17' 2" x 11' 1"
Bedroom 2	3.69 m x 3.41 m	12' 1" x 11' 1"
Total Internal Area	74.4 sq m	800.8 sq ft

PLOT: J2 04 03		
1 BEDROOM APARTMENT		
Kitchen/Living/Dining	5.09 m x 4.60 m	16' 6" x 15' 0"
Bedroom	3.57 m x 3.20 m	11' 7" x 10' 4"
Total Internal Area	52.4 sq m	564 sq ft



KEY
 S Service Cupboard
 W Wardrobe
 W/D Washer/Dryer
 → Sliding Door

JASMIN & JAVELIN HOUSE FIFTH FLOOR



PLOTS: J1 05 01, J2 05 06 3 BEDROOM APARTMENT		
Kitchen/Living/Dining	9.80 m x 3.83 m	32' 1" x 12' 5"
Bedroom 1	6.29 m x 2.98 m	20' 6" x 9' 7"
Bedroom 2	3.60 m x 2.97 m	11' 8" x 9' 7"
Bedroom 3	5.37 m x 2.75 m	17' 6" x 9' 0"
Total Internal Area	97.2 sq m	1046.2 sq ft

PLOTS: J1 05 04, J2 05 02 2 BEDROOM APARTMENT		
Kitchen/Living/Dining	7.04 m x 5.44 m	23' 0" x 17' 8"
Bedroom 1	4.75 m x 3.05 m	15' 5" x 10' 0"
Bedroom 2	3.56 m x 2.95 m	11' 6" x 9' 6"
Total Internal Area	74.2 sq m	798.6 sq ft

PLOT: J2 05 04 1 BEDROOM APARTMENT		
Kitchen/Living/Dining	4.84 m x 3.34 m	15' 8" x 10' 9"
Bedroom	3.65 m x 3.25 m	11' 9" x 10' 6"
Total Internal Area	42 sq m	452 sq ft

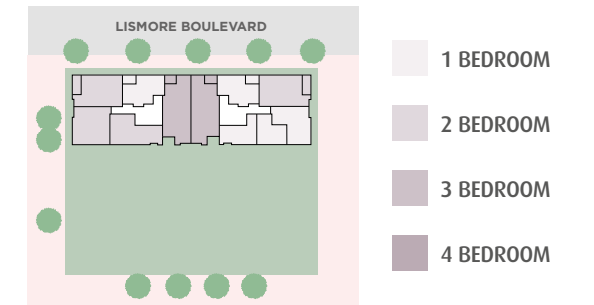
PLOT: J1 05 02 2 BEDROOM APARTMENT		
Kitchen/Living/Dining	6.97 m x 4.32 m	22' 8" x 14' 1"
Bedroom 1	3.75 m x 3.59 m	12' 3" x 11' 7"
Bedroom 2	3.66 m x 2.89 m	12' 0" x 9' 4"
Total Internal Area	68.3 sq m	735.1 sq ft

PLOTS: J1 05 05, J2 05 01 1 BEDROOM APARTMENT		
Kitchen/Living/Dining	6.00 m x 4.29 m	19' 6" x 14' 0"
Bedroom	4.47 m x 3.26 m	14' 6" x 10' 6"
Total Internal Area	52.1 sq m	560.8 sq ft

PLOT: J2 05 05 1 BEDROOM APARTMENT		
Kitchen/Living/Dining	5.62 m x 4.07 m	18' 4" x 13' 3"
Bedroom	3.75 m x 3.65 m	12' 3" x 11' 9"
Total Internal Area	46.4 sq m	499.4 sq ft

PLOT: J1 05 03 2 BEDROOM APARTMENT		
Kitchen/Living/Dining	5.25 m x 5.08 m	17' 2" x 16' 6"
Bedroom 1	5.25 m x 3.40 m	17' 2" x 11' 1"
Bedroom 2	3.69 m x 3.41 m	12' 1" x 11' 1"
Total Internal Area	74.4 sq m	800.8 sq ft

PLOT: J2 05 03 1 BEDROOM APARTMENT		
Kitchen/Living/Dining	5.09 m x 4.60 m	16' 6" x 15' 0"
Bedroom	3.57 m x 3.20 m	11' 7" x 10' 4"
Total Internal Area	52.4 sq m	564 sq ft



- KEY**
- S Service Cupboard
 - W Wardrobe
 - W/D Washer/Dryer
 - Sliding Door

JASMIN & JAVELIN HOUSE SIXTH FLOOR



COLINDALE
GARDENS
LONDON NW9



PLOTS: J1 06 01, J2 06 06 3 BEDROOM APARTMENT		
Kitchen/Living/Dining	9.80 m x 3.83 m	32' 1" x 12' 5"
Bedroom 1	6.29 m x 2.98 m	20' 6" x 9' 7"
Bedroom 2	3.60 m x 2.97 m	11' 8" x 9' 7"
Bedroom 3	5.37 m x 2.75 m	17' 6" x 9' 0"
Total Internal Area	97.2 sq m	1046.2 sq ft

PLOTS: J1 06 04, J2 06 02 2 BEDROOM APARTMENT		
Kitchen/Living/Dining	7.04 m x 5.44 m	23' 0" x 17' 8"
Bedroom 1	4.75 m x 3.05 m	15' 5" x 10' 0"
Bedroom 2	3.56 m x 2.95 m	11' 6" x 9' 6"
Total Internal Area	74.2 sq m	798.6 sq ft

PLOT: J2 06 04 1 BEDROOM APARTMENT		
Kitchen/Living/Dining	4.84 m x 3.34 m	15' 8" x 10' 9"
Bedroom	3.65 m x 3.25 m	11' 9" x 10' 6"
Total Internal Area	42 sq m	452 sq ft

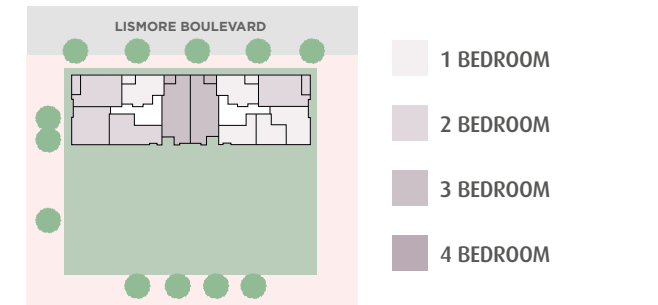
PLOT: J1 06 02 2 BEDROOM APARTMENT		
Kitchen/Living/Dining	6.97 m x 4.32 m	22' 8" x 14' 1"
Bedroom 1	3.75 m x 3.59 m	12' 3" x 11' 7"
Bedroom 2	3.66 m x 2.89 m	12' 0" x 9' 4"
Total Internal Area	68.3 sq m	735.1 sq ft

PLOTS: J1 06 05, J2 06 01 1 BEDROOM APARTMENT		
Kitchen/Living/Dining	6.00 m x 4.29 m	19' 6" x 14' 0"
Bedroom	4.47 m x 3.26 m	14' 6" x 10' 6"
Total Internal Area	52.1 sq m	560.8 sq ft

PLOT: J2 06 05 1 BEDROOM APARTMENT		
Kitchen/Living/Dining	5.62 m x 4.07 m	18' 4" x 13' 3"
Bedroom	3.75 m x 3.65 m	12' 3" x 11' 9"
Total Internal Area	46.4 sq m	499.4 sq ft

PLOT: J1 06 03 2 BEDROOM APARTMENT		
Kitchen/Living/Dining	5.25 m x 5.08 m	17' 2" x 16' 6"
Bedroom 1	5.25 m x 3.40 m	17' 2" x 11' 1"
Bedroom 2	3.69 m x 3.41 m	12' 1" x 11' 1"
Total Internal Area	74.4 sq m	800.8 sq ft

PLOT: J2 06 03 1 BEDROOM APARTMENT		
Kitchen/Living/Dining	5.09 m x 4.60 m	16' 6" x 15' 0"
Bedroom	3.57 m x 3.20 m	11' 7" x 10' 4"
Total Internal Area	52.4 sq m	564 sq ft



- KEY**
- S Service Cupboard
 - W Wardrobe
 - W/D Washer/Dryer
 - Sliding Door



INTRODUCING KEW & KENNINGTON COURT

Kew & Kennington Court is located in the Family Quarter, and contains studios, 1, 2, 3 and 4 bedroom apartments and duplexes. It encloses a private podium garden.



KEW & KENNINGTON COURT GROUND FLOOR



PLOT: KO 00 11		TYPE 160	
1 BEDROOM APARTMENT			
Kitchen/Living/Dining	5.79 m x 4.69 m	18' 9" x 15' 3"	
Bedroom	4.14 m x 2.44 m	13' 6" x 8' 0"	
Total Internal Area	50.1 sq m	539.2 sq ft	

PLOT: KO 00 17		TYPE 104	
1 BEDROOM APARTMENT			
Kitchen/Living/Dining	8.47 m x 4.48 m	27' 8" x 14' 7"	
Bedroom	4.63 m x 2.94 m	15' 2" x 9' 6"	
Total Internal Area	68.4 sq m	736.2 sq ft	

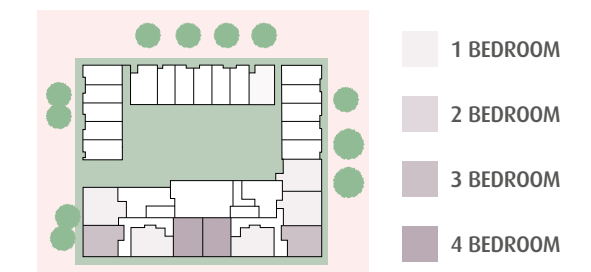
PLOT: KO 00 18		TYPE 103	
1 BEDROOM APARTMENT			
Kitchen/Living/Dining	8.47 m x 4.99 m	27' 7" x 16' 3"	
Bedroom	4.52 m x 2.94 m	14' 8" x 9' 6"	
Total Internal Area	72.8 sq m	783.6 sq ft	

PLOTS: KO 00 19, KO 00 24 (LOWER LEVEL)		TYPES 040, 140	
3 BEDROOM DUPLEX			
Kitchen/Living/Dining	6.70 m x 5.33 m	21' 9" x 17' 5"	
Internal Area (Lower Level)	55.8 sq m	600.6 sq ft	
Total Internal Area	126.1 sq m	1357.3 sq ft	

PLOTS: KO 00 20, KO 00 23		TYPES 002, 102	
1 BEDROOM APARTMENT			
Kitchen/Living/Dining	6.33 m x 6.15 m	20' 7" x 20' 1"	
Bedroom	3.86 m x 3.54 m	12' 6" x 11' 6"	
Total Internal Area	57.5 sq m	618.9 sq ft	

PLOTS: KO 00 21, KO 00 22 (LOWER LEVEL)		TYPES 041, 141	
4 BEDROOM DUPLEX			
Kitchen/Living/Dining	6.73 m x 6.28 m	22' 0" x 20' 6"	
Internal Area (Lower Level)	58.9 sq m	633.9 sq ft	
Total Internal Area	153.2 sq m	1649.4 sq ft	

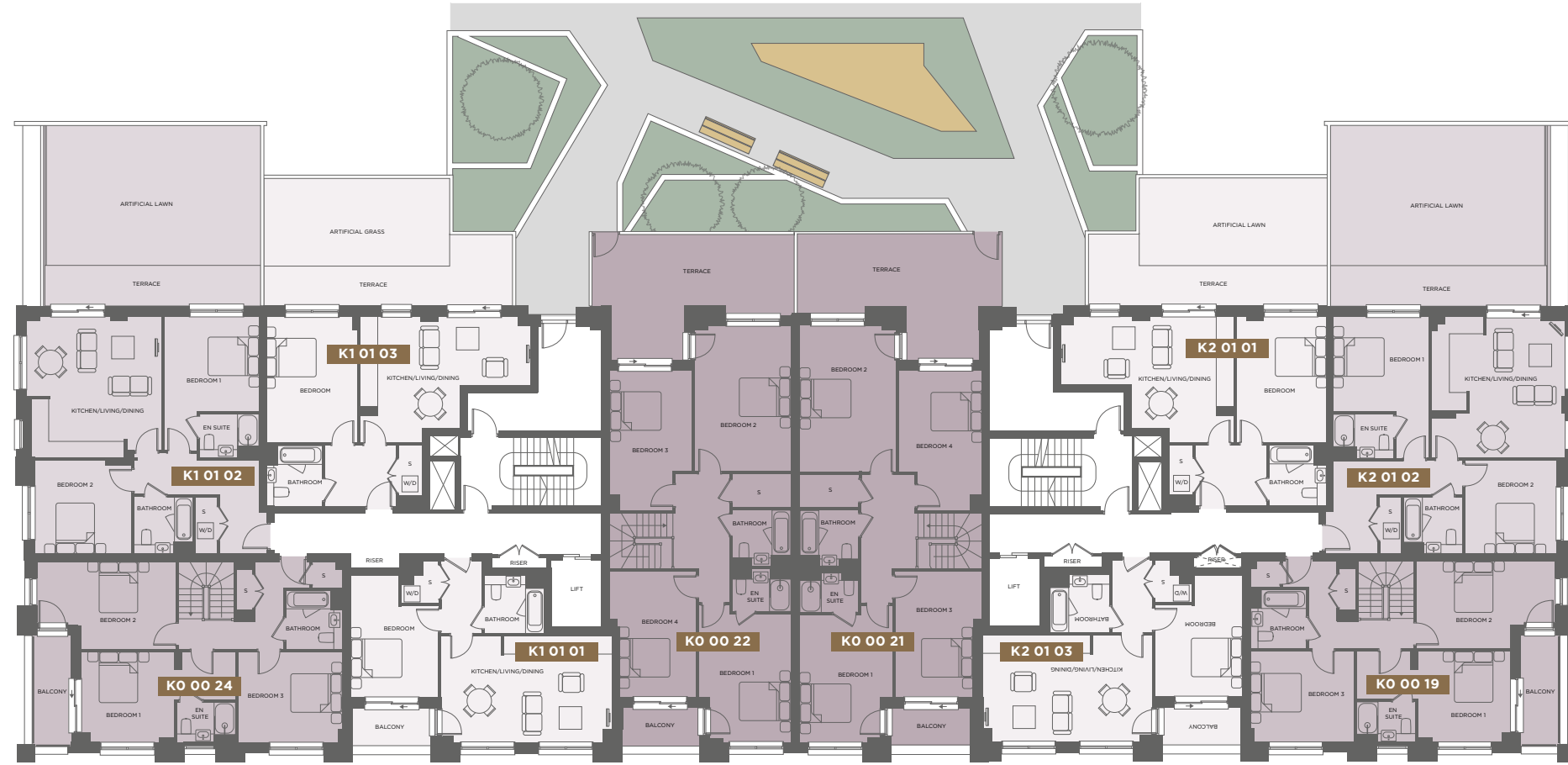
PLOT: KO 00 25		TYPE 101	
1 BEDROOM APARTMENT			
Kitchen/Living/Dining	7.55 m x 5.45 m	24' 7" x 17' 8"	
Bedroom	5.06 m x 3.21 m	16' 6" x 10' 5"	
Total Internal Area	75.7 sq m	814.8 sq ft	



KEY

S Service Cupboard
W Wardrobe
W/D Washer/Dryer
→ Sliding Door

KEW & KENNINGTON COURT FIRST FLOOR



PLOTS: KO 00 19, KO 00 24 (UPPER LEVEL) TYPES 040, 140 3 BEDROOM DUPLEX

Bedroom 1	5.71 m x 3.35 m	18' 7" x 10' 9"
Bedroom 2	5.16 m x 3.21 m	16' 9" x 10' 5"
Bedroom 3	3.85 m x 3.35 m	12' 6" x 10' 9"
Internal Area (Upper Level)	70.3 sq m	756.7 sq ft
Total Internal Area	126.1 sq m	1357.3 sq ft

PLOTS: KO 00 21, KO 00 22 (UPPER LEVEL) TYPES 041, 141 4 BEDROOM DUPLEX

Bedroom 1	5.08 m x 3.41 m	16' 6" x 11' 1"
Bedroom 2	5.41 m x 3.54 m	17' 7" x 11' 6"
Bedroom 3	5.19 m x 3.03 m	17' 0" x 9' 9"
Bedroom 4	4.67 m x 3.17 m	15' 3" x 10' 4"
Internal Area (Upper Level)	94.3 sq m	1015.0 sq ft
Total Internal Area	153.2 sq m	1649.4 sq ft

PLOTS: K1 01 01, K2 01 03 TYPES 021, 121 1 BEDROOM APARTMENT

Kitchen/Living/Dining	6.34 m x 3.95 m	20' 8" x 12' 9"
Bedroom	4.47 m x 3.26 m	14' 6" x 10' 6"
Total Internal Area	51.2 sq m	551.1 sq ft

PLOT: K1 01 02 TYPE 105 2 BEDROOM APARTMENT

Kitchen/Living/Dining	4.99 m x 4.97 m	16' 3" x 16' 3"
Bedroom 1	4.97 m x 3.48 m	11' 4" x 16' 3"
Bedroom 2	3.53 m x 3.41 m	11' 6" x 11' 1"
Total Internal Area	76.5 sq m	823.49 sq ft

PLOT: K1 01 03 TYPE 107 1 BEDROOM APARTMENT

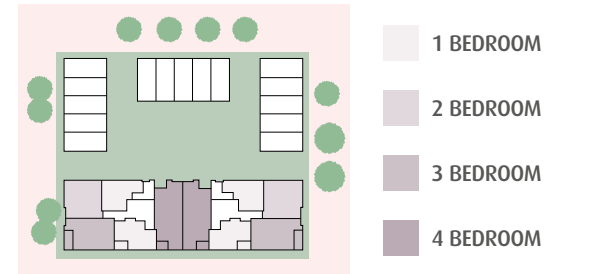
Kitchen/Living/Dining	6.28 m x 4.69 m	20' 6" x 15' 3"
Bedroom	4.69 m x 3.36 m	15' 5" x 11' 0"
Total Internal Area	53.7 sq m	578 sq ft

PLOT: K2 01 01 TYPE 108 1 BEDROOM APARTMENT

Kitchen/Living/Dining	6.38 m x 4.69 m	20' 9" x 15' 3"
Bedroom	4.69 m x 3.26 m	15' 3" x 10' 7"
Total Internal Area	53.8 sq m	579.1 sq ft

PLOT: K2 01 02 TYPE 106 2 BEDROOM APARTMENT

Kitchen/Living/Dining	5.25 m x 4.97 m	17' 2" x 16' 3"
Bedroom 1	5.25 m x 3.50 m	17' 2" x 11' 5"
Bedroom 2	3.41 m x 3.39 m	11' 1" x 11' 1"
Total Internal Area	76.4 sq m	822.3 sq ft



- KEY**
- S Service Cupboard
 - W Wardrobe
 - W/D Washer/Dryer
 - Sliding Door

KEW & KENNINGTON COURT SECOND FLOOR



COLINDALE GARDENS
LONDON NW9



PLOTS: K1 02 01, K2 02 06 TYPES 027, 127 3 BEDROOM APARTMENT

Kitchen/Living/Dining	9.46 m x 3.83 m	31' 0" x 12' 5"
Bedroom 1	6.28 m x 2.98 m	20' 6" x 9' 7"
Bedroom 2	3.59 m x 2.97 m	11' 8" x 9' 7"
Bedroom 3	5.36 m x 2.75 m	17' 6" x 9' 0"
Total Internal Area	96.2 sq m	1035.5 sq ft

PLOTS: K1 02 02, K2 02 05 TYPES 026, 126 1 BEDROOM APARTMENT

Kitchen/Living/Dining	6.00 m x 4.28 m	19' 6" x 14' 0"
Bedroom	4.47 m x 3.26 m	14' 6" x 10' 6"
Total Internal Area	52.1 sq m	560.8sq ft

PLOTS: K1 02 03, K2 02 04 TYPES 025, 125 2 BEDROOM APARTMENT

Kitchen/Living/Dining	7.03 m x 5.44 m	23' 0" x 17' 8"
Bedroom 1	4.75 m x 3.05 m	15' 5" x 10' 0"
Bedroom 2	3.55 m x 2.95 m	11' 6" x 9' 6"
Total Internal Area	74.2 sq m	798.6 sq ft

PLOT: K1 02 04 TYPE 124 2 BEDROOM APARTMENT

Kitchen/Living/Dining	5.25 m x 5.08 m	17' 2" x 16' 6"
Bedroom 1	5.25 m x 3.39 m	17' 2" x 11' 1"
Bedroom 2	3.69 m x 3.41 m	12' 1" x 11' 1"
Total Internal Area	74.4 sq m	800.8 sq ft

PLOT: K1 02 05 TYPE 123 2 BEDROOM APARTMENT

Kitchen/Living/Dining	6.97 m x 4.31 m	22' 8" x 14' 1"
Bedroom 1	3.75 m x 3.59 m	12' 3" x 11' 7"
Bedroom 2	3.65 m x 2.89 m	12' 0" x 9' 4"
Total Internal Area	68.3 sq m	735.1 sq ft

PLOT: K2 02 01 TYPE 163 1 BEDROOM APARTMENT

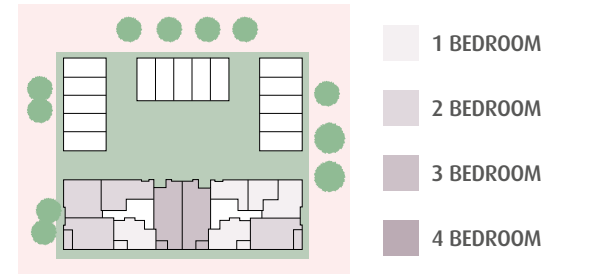
Kitchen/Living/Dining	5.62 m x 4.07 m	18' 4" x 13' 3"
Bedroom	3.75 m x 3.65 m	12' 3" x 11' 9"
Total Internal Area	46.4 sq m	499.4 sq ft

PLOT: K2 02 02 TYPE 136 1 BEDROOM APARTMENT

Kitchen/Living/Dining	4.84 m x 3.34 m	15' 8" x 10' 9"
Bedroom	3.65 m x 3.25 m	11' 9" x 10' 6"
Total Internal Area	42 sq m	452 sq ft

PLOT: K2 02 03 TYPE 128 1 BEDROOM APARTMENT

Kitchen/Living/Dining	5.09 m x 4.59 m	16' 6" x 15' 0"
Bedroom	3.57 m x 3.19 m	11' 7" x 10' 4"
Total Internal Area	52.4 sq m	564 sq ft



- KEY**
- S Service Cupboard
 - W Wardrobe
 - W/D Washer/Dryer
 - Sliding Door

KEW & KENNINGTON COURT THIRD FLOOR



PLOTS: K1 03 01, K2 03 06 3 BEDROOM APARTMENT		
Kitchen/Living/Dining	9.80 m x 3.83 m	32' 1" x 12' 5"
Bedroom 1	6.28 m x 2.98 m	20' 6" x 9' 7"
Bedroom 2	3.59 m x 2.97 m	11' 8" x 9' 7"
Bedroom 3	5.36 m x 2.75 m	17' 6" x 9' 0"
Total Internal Area	97.2 sq m	1046.2 sq ft

PLOT: K1 03 04 2 BEDROOM APARTMENT		
Kitchen/Living/Dining	5.25 m x 5.08 m	17' 2" x 16' 6"
Bedroom 1	5.25 m x 3.39 m	17' 2" x 11' 1"
Bedroom 2	3.69 m x 3.41 m	12' 1" x 11' 1"
Total Internal Area	74.4 sq m	800.8 sq ft

PLOT: K2 03 02 1 BEDROOM APARTMENT		
Kitchen/Living/Dining	4.84 m x 3.34 m	15' 8" x 10' 9"
Bedroom	3.65 m x 3.25 m	11' 9" x 10' 6"
Total Internal Area	42 sq m	452 sq ft

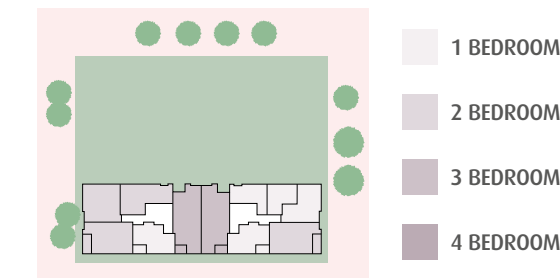
PLOT: K1 03 02, K2 03 05 1 BEDROOM APARTMENT		
Kitchen/Living/Dining	6.00 m x 4.28 m	21' 3" x 14' 2"
Bedroom	4.47 m x 3.26 m	14' 6" x 10' 6"
Total Internal Area	52.1 sq m	560.8 sq ft

PLOT: K1 03 05 2 BEDROOM APARTMENT		
Kitchen/Living/Dining	6.97 m x 4.31 m	22' 8" x 14' 1"
Bedroom 1	3.75 m x 3.59 m	12' 3" x 11' 7"
Bedroom 2	3.65 m x 2.89 m	12' 0" x 9' 4"
Total Internal Area	68.3 sq m	735.1 sq ft

PLOT: K2 03 03 1 BEDROOM APARTMENT		
Kitchen/Living/Dining	5.09 m x 4.59 m	16' 6" x 15' 0"
Bedroom	3.57 m x 3.19 m	11' 7" x 10' 4"
Total Internal Area	52.4 sq m	564 sq ft

PLOTS: K1 03 03, K2 03 04 2 BEDROOM APARTMENT		
Kitchen/Living/Dining	7.03 m x 5.44 m	23' 0" x 17' 8"
Bedroom 1	4.75 m x 3.05 m	15' 5" x 10' 0"
Bedroom 2	3.55 m x 2.95 m	11' 6" x 9' 6"
Total Internal Area	74.2 sq m	798.6 sq ft

PLOT: K2 03 01 1 BEDROOM APARTMENT		
Kitchen/Living/Dining	5.62 m x 4.07 m	18' 4" x 13' 3"
Bedroom	3.75 m x 3.65 m	12' 3" x 11' 9"
Total Internal Area	46.4 sq m	499.4 sq ft



KEY

S	Service Cupboard
W	Wardrobe
W/D	Washer/Dryer
→	Sliding Door

KEW & KENNINGTON COURT FOURTH FLOOR



COLINDALE GARDENS
LONDON NW9



PLOTS: K1 04 01, K2 04 06 3 BEDROOM APARTMENT		
Kitchen/Living/Dining	9.80 m x 3.83 m	32' 1" x 12' 5"
Bedroom 1	6.28 m x 2.98 m	20' 6" x 9' 7"
Bedroom 2	3.59 m x 2.97 m	11' 8" x 9' 7"
Bedroom 3	5.36 m x 2.75 m	17' 6" x 9' 0"
Total Internal Area	97.2 sq m	1046.2 sq ft

PLOT: K1 04 04 2 BEDROOM APARTMENT		
Kitchen/Living/Dining	5.25 m x 5.08 m	17' 2" x 16' 6"
Bedroom 1	5.25 m x 3.39 m	17' 2" x 11' 1"
Bedroom 2	3.69 m x 3.41 m	12' 1" x 11' 1"
Total Internal Area	74.4 sq m	800.8 sq ft

PLOT: K2 04 02 1 BEDROOM APARTMENT		
Kitchen/Living/Dining	4.84 m x 3.34 m	15' 8" x 10' 9"
Bedroom	3.65 m x 3.25 m	11' 9" x 10' 6"
Total Internal Area	42 sq m	452 sq ft

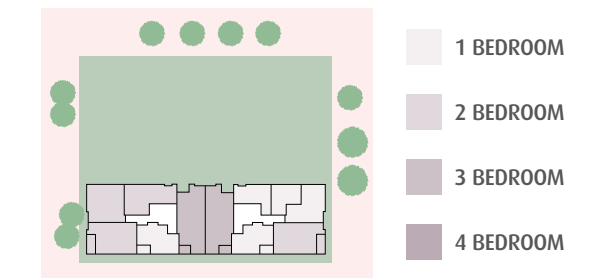
PLOTS: K1 04 02, K2 04 05 1 BEDROOM APARTMENT		
Kitchen/Living/Dining	6.00 m x 4.28 m	19' 6" x 14' 0"
Bedroom	4.47 m x 3.26 m	14' 6" x 10' 6"
Total Internal Area	52.1 sq m	560.8 sq ft

PLOT: K1 04 05 2 BEDROOM APARTMENT		
Kitchen/Living/Dining	6.97 m x 4.31 m	22' 8" x 14' 1"
Bedroom 1	3.75 m x 3.59 m	12' 3" x 11' 7"
Bedroom 2	3.65 m x 2.89 m	12' 0" x 9' 4"
Total Internal Area	68.3 sq m	735.1 sq ft

PLOT: K2 04 03 1 BEDROOM APARTMENT		
Kitchen/Living/Dining	5.09 m x 4.59 m	16' 6" x 15' 0"
Bedroom	3.57 m x 3.19 m	11' 7" x 10' 4"
Total Internal Area	52.4 sq m	564 sq ft

PLOTS: K1 04 03, K2 04 04 2 BEDROOM APARTMENT		
Kitchen/Living/Dining	7.03 m x 5.44 m	23' 0" x 17' 8"
Bedroom 1	4.75 m x 3.05 m	15' 5" x 10' 0"
Bedroom 2	3.55 m x 2.95 m	11' 6" x 9' 6"
Total Internal Area	74.2 sq m	798.6 sq ft

PLOT: K2 04 01 1 BEDROOM APARTMENT		
Kitchen/Living/Dining	5.62 m x 4.07 m	18' 4" x 13' 3"
Bedroom	3.75 m x 3.65 m	12' 3" x 11' 9"
Total Internal Area	46.4 sq m	499.4 sq ft



KEY

S	Service Cupboard
W	Wardrobe
W/D	Washer/Dryer
→	Sliding Door

KEW & KENNINGTON COURT FIFTH FLOOR



PLOTS: K1 05 01, K2 05 06		TYPES 035, 135	
3 BEDROOM APARTMENT			
Kitchen/Living/Dining	9.80 m x 3.83 m	32' 1" x 12' 5"	
Bedroom 1	6.28 m x 2.98 m	20' 6" x 9' 7"	
Bedroom 2	3.59 m x 2.97 m	11' 8" x 9' 7"	
Bedroom 3	5.36 m x 2.75 m	17' 6" x 9' 0"	
Total Internal Area	97.2 sq m	1046.2 sq ft	

PLOTS: K1 05 02, K2 05 05		TYPES 034, 134	
1 BEDROOM APARTMENT			
Kitchen/Living/Dining	6.00 m x 4.28 m	19' 6" x 14' 0"	
Bedroom	4.47 m x 3.26 m	14' 6" x 10' 6"	
Total Internal Area	52.1 sq m	560.8 sq ft	

PLOTS: K1 05 03, K2 05 04		TYPES 033, 133	
2 BEDROOM APARTMENT			
Kitchen/Living/Dining	7.03 m x 5.44 m	23' 0" x 17' 8"	
Bedroom 1	4.75 m x 3.05 m	15' 5" x 10' 0"	
Bedroom 2	3.55 m x 2.95 m	11' 6" x 9' 6"	
Total Internal Area	74.2 sq m	798.6 sq ft	

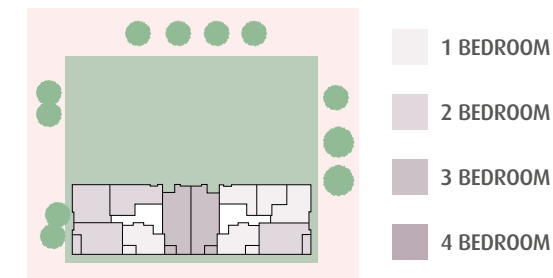
PLOT: K1 05 04		TYPE 124	
2 BEDROOM APARTMENT			
Kitchen/Living/Dining	5.25 m x 5.08 m	17' 2" x 16' 6"	
Bedroom 1	5.25 m x 3.39 m	17' 2" x 11' 1"	
Bedroom 2	3.69 m x 3.41 m	12' 1" x 11' 1"	
Total Internal Area	74.4 sq m	800.8 sq ft	

PLOT: K1 05 05		TYPE 123	
2 BEDROOM APARTMENT			
Kitchen/Living/Dining	6.97 m x 4.31 m	22' 8" x 14' 1"	
Bedroom 1	3.75 m x 3.59 m	12' 3" x 11' 7"	
Bedroom 2	3.65 m x 2.89 m	12' 0" x 9' 4"	
Total Internal Area	68.3 sq m	735.1 sq ft	

PLOT: K2 05 01		TYPE 163	
1 BEDROOM APARTMENT			
Kitchen/Living/Dining	5.62 m x 4.07 m	18' 4" x 13' 3"	
Bedroom	4.75 m x 3.65 m	12' 3" x 11' 9"	
Total Internal Area	46.4 sq m	499.4 sq ft	

PLOT: K2 05 02		TYPE 136	
1 BEDROOM APARTMENT			
Kitchen/Living/Dining	4.84 m x 3.34 m	15' 8" x 10' 9"	
Bedroom	3.65 m x 3.25 m	11' 9" x 10' 6"	
Total Internal Area	42 sq m	452 sq ft	

PLOT: K2 05 03		TYPE 128	
1 BEDROOM APARTMENT			
Kitchen/Living/Dining	5.09 m x 4.59 m	16' 6" x 15' 0"	
Bedroom	3.57 m x 3.19 m	11' 7" x 10' 4"	
Total Internal Area	52.4 sq m	564 sq ft	



- KEY**
- S Service Cupboard
 - W Wardrobe
 - W/D Washer/Dryer
 - Sliding Door



A DYNAMIC PRESENCE IN LONDON



Redrow Homes Colindale
Redrow House
1 Denmark Hill Drive
London
NW9 4BQ

+44 (0)20 8358 8340

INNOVATIVE LIVING

Redrow is a premium residential developer focused on bespoke residential opportunities in the world's most dynamic city.

Redrow is committed to creating new communities where people aspire to live. Our award winning portfolio offers a wealth of choice for our discerning customers, combining innovative design and sought after London locations. As a business, we are focused on contributing to economic development and creating vibrant, healthy communities where we work.

We are fortunate to have a fantastic blend of fresh-thinking and well-honed experience in every department of our team; from land acquisition, to planning and design, through to build, sales and aftercare.

This means that you can be confident that a distinctive and exacting standard has been set and followed throughout all our developments. That standard is to be the best. To buy the best land, design and build the best buildings, and provide the best sales and after care experience.

A SUSTAINABLE REDROW

Redrow has set up Redrow Aspirations 2018 action plan to ensure that year on year our business continues to improve in environmental sustainability, aiming to be one of the most sustainable and socially responsible companies in our field.

In 2017, Redrow were awarded gold in the NextGeneration benchmarking system for sustainability.



SINCE THEN WE HAVE DELIVERED SOME OF THE FOLLOWING KEY HIGHLIGHTS:

100%

of the heating supply for all the buildings at Colindale Gardens will come from the on-site District Heat Network

99.8%

of timber used across all Redrow sites was responsibly sourced in 2015

OUR TRAVEL PLAN

gives all residents access to our Car Club and offers sustainable travel incentives

94.8%

of waste produced is now diverted from landfill

COMMUNITY AND ENVIRONMENTAL VALUES

Improving the environment and quality of life for our customers and communities is at the heart of Redrow's operations.

ENVIRONMENT

Our Sustainability Strategy is to:

- Be more efficient in our use of resources such as energy and water
- Protect and enhance biodiversity
- Reduce the environmental impact of our homes through their design and construction, and the way residents live in them
- Work with suppliers to help them reduce their impact on the environment. This covers ethical material sourcing, transport and delivery, packaging, health and safety, workforce competency, training and welfare

In recognition of our environmental performance, we have achieved an independently assessed, British Standard 8555 Level 2, which focuses on environmental management systems.

- At Colindale Gardens **100%** of the heating supply for all the buildings will come from the on-site District Heat Network
- All residents will have access to our Car Club, and sustainable travel incentives are available as part of our Travel Plan
- Across all Redrow sites, **99.8%** of timber used was responsibly sourced in 2015 and the amount of waste we diverted from landfill has increased to **94.8%**

COMMUNITY

Colindale Gardens is a vibrant new community within an attractive green setting. Throughout its build programme, Redrow is committed to supporting local labour and training. We are providing opportunities for:

- Over 90 apprentices
- 110 work experience placements
- 1000 site visits
- 500 workshops for local students

Redrow is the first Founding Patron of the nearby OnSide Youth Zone, at Montrose Playing Fields to the north of Colindale station. This £6 million state-of-the-art youth centre will give young people a quality, safe and affordable place to go in their leisure time.



RECENT AWARDS

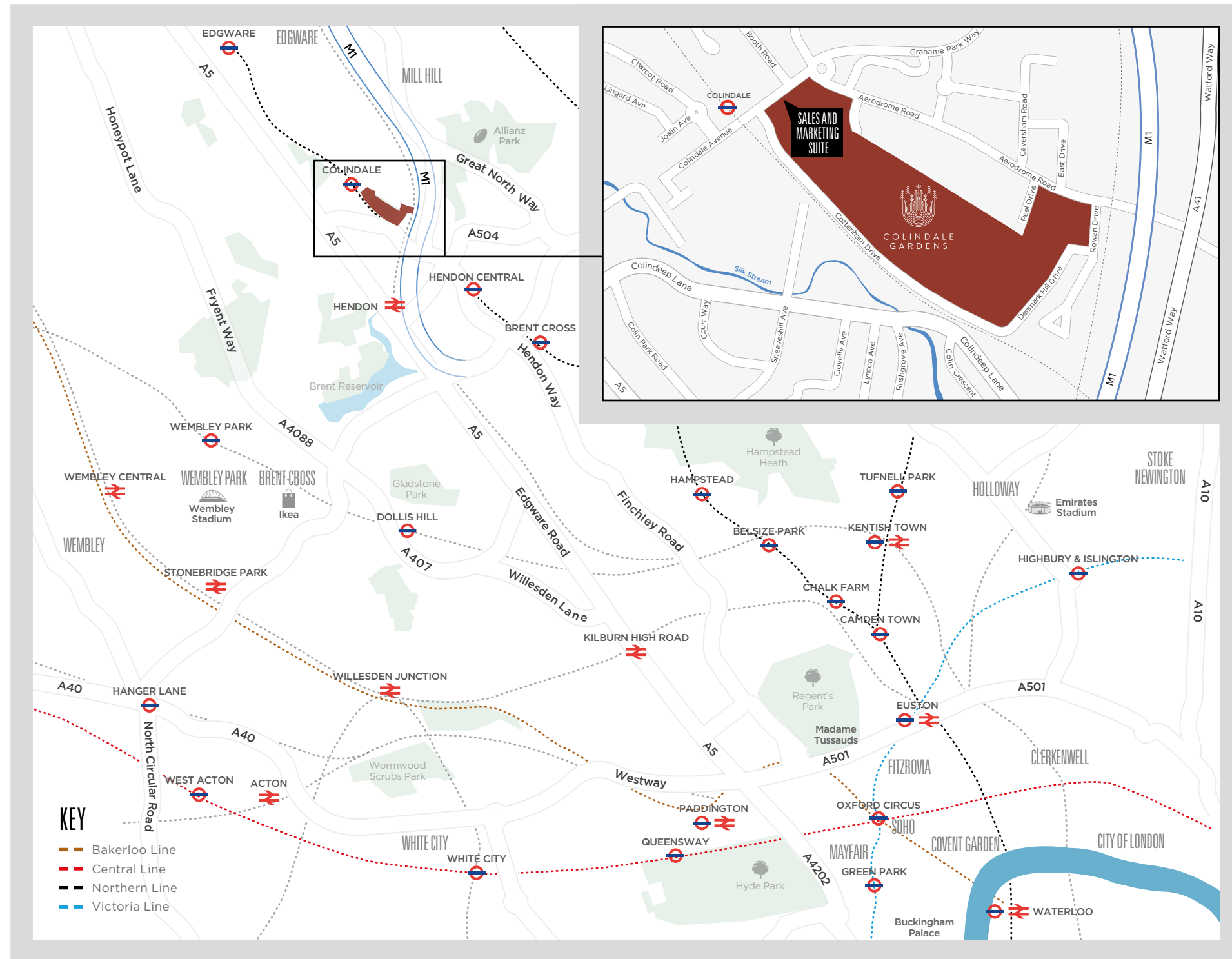
WhatHouse? AWARDS 2018
Housebuilder of the Year

WhatHouse? AWARDS 2018
Best Large Housebuilder

WhatHouse? AWARDS 2018
Best Public Realm

THE
BRICKS
LASC WARRANTY AWARDS
WINNER 2018
Development of the Year

THE
BRICKS
LASC WARRANTY AWARDS
WINNER 2018
Multi-storey Development of the Year

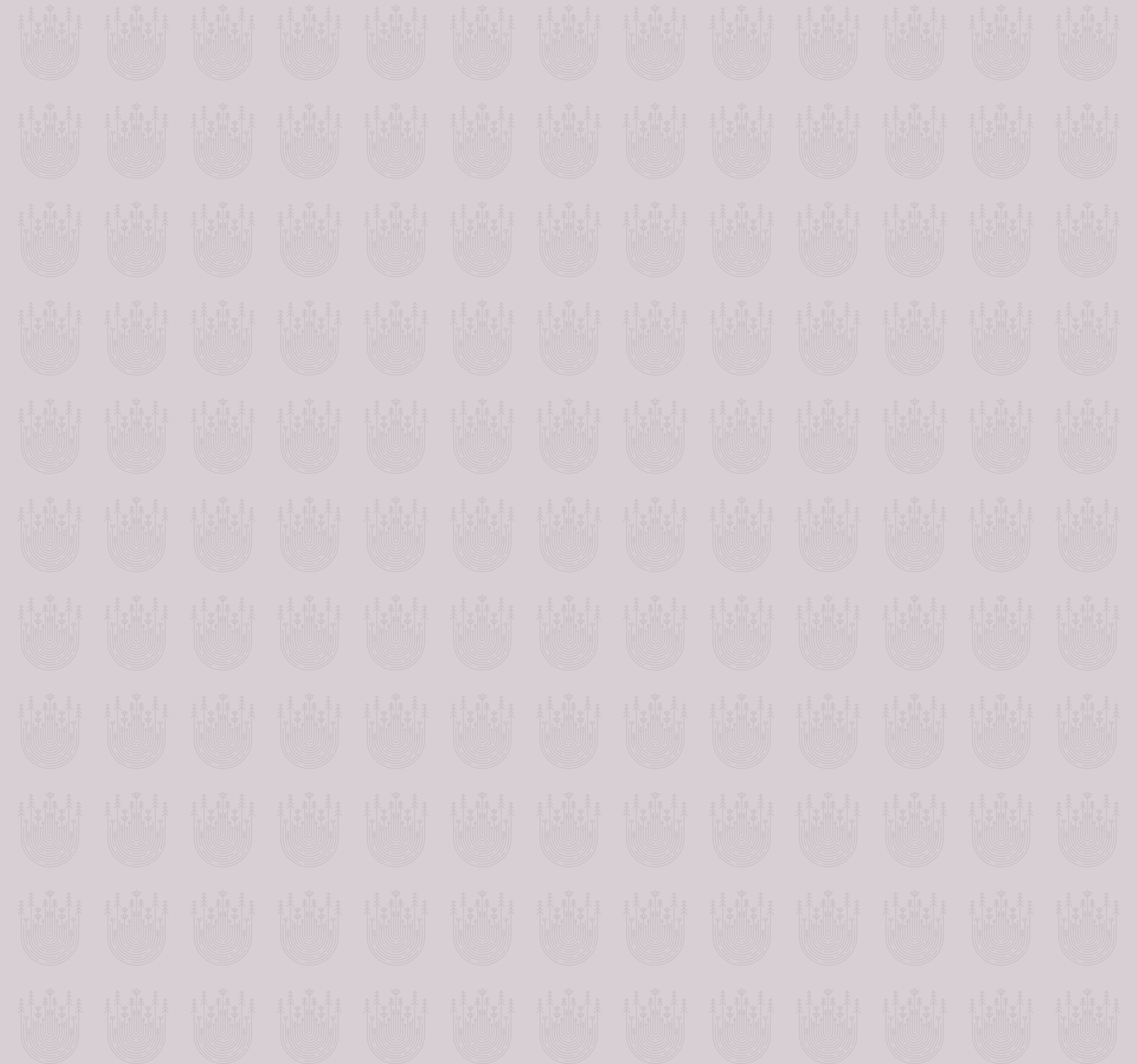


SALES AND MARKETING SUITE

Colindale Gardens
 Colindale Avenue
 London
 NW9 5HU

Contact us
 020 3538 2793
www.colindalegardens.com
sales@colindalegardens.com

The information contained in this document is provided for general guidelines only and does not form the whole or any part of any offer, contract or warranty. These particulars should not be relied upon as accurately describing any of the specific matters described by any order under the Consumer Protection from Unfair Trading Regulations 2008. Customers are strongly advised to contact a Redrow Homes Limited representative for further details and to satisfy themselves as to their accuracy. Your attention is drawn to the fact that it may not be possible to obtain all products as referred to in the specification. In such cases, a similar alternative will be provided. Redrow Homes Limited reserve the right to make these changes as required. All information and computer representations contained in this document are taken from design intent material and may be subject to further design development. Floorplans are for approximate measurements only. All measurements may vary within a tolerance of 5%. They are not intended to be used for carpet sizes, appliance sizes or items of furniture. Images are representative only. Maps are not to scale and show approximate locations only. Kitchen layouts are indicative only and subject to optimisation by Redrow Homes Limited. Colindale Gardens is a marketing name and will not necessarily form part of the approved postal address. December 2018.



WWW.COLINDALEGARDENS.COM

