



COLINDALE  
GARDENS

LONDON NW9

THE PARK COLLECTION





COLINDALE  
GARDENS

LONDON NW9

# WELCOME

The Park Collection is the latest release of homes at Colindale Gardens, located in the heart of this visionary new community, with stunning views over its main park.

Within The Park Collection, you will find a wide variety of homes, designed to suit a diverse range of household sizes from singles to families. There are studios, 1, 2 and 3 bedroom apartments, and 2, 3 and 4 bedroom integral townhouses. All of the apartments have private balconies and/or terraces, and the communal courtyard provides residents with further enjoyment of the natural environment.

The Park Collection's central location makes it the hub for the key amenities at Colindale Gardens, such as the gym and concierge service.

FRESH OUTLOOK • LONDON LIFESTYLE



COLINDALE  
GARDENS  
LONDON NW9

# REFRESH YOUR OUTLOOK

With its southerly outlook, The Park Collection overlooks the central four acre park at the heart of Colindale Gardens, which is a green focal point for the community. In total, Colindale Gardens has nine acres of open space in which to meet, relax and enjoy the genial atmosphere of a friendly neighbourhood. It will include walkways, cycle paths, play areas, large open grass areas and tranquil corners with attractive planting and trees. As well as the open space, there are more amenities on the way, such as the new school, cafés and shops, which will all make Colindale Gardens a welcoming and dynamic place to live.

Exclusive to The Park Collection is the first floor courtyard, where residents can relax and enjoy the outdoor setting, surrounded by soothing landscaping and quiet places to sit.





COLINDALE  
GARDENS  
LONDON NW9

## EXCLUSIVELY YOURS

You'll be pleased to know that Colindale Gardens has a 24 hour concierge service, which is located in a boutique hotel style reception area. You can rely on the concierge to greet your visitors, receive deliveries, and carry out countless other little services to help life run more smoothly.

The Colindale Gardens residents' gym is also situated within The Park Collection. Regular exercise is now simply a matter of taking the lift to the ground floor and getting started on your workout with the cardio machines and weights that the gym is equipped with. The gym also includes a sauna and a steam room.

**COLINDALE TUBE STATION**  
Northern Line, direct to  
West End and City

**PROPOSED RETAIL HUB**  
for convenience stores,  
coffee shops and restaurants

**THE PARK COLLECTION**  
INCLUDING: CONCIERGE AND  
RESIDENTS' GYM

**WOODLAND ADVENTURE GYM**

**PEEL SQUARE**

**SALES AND MARKETING SUITE**

**4 ACRE PARK**

**NEW SCHOOL**  
proposed 3 form entry,  
600 pupil primary school

# THE QUALITY YOU EXPECT FROM REDROW

The Park Collection is designed for contemporary living. The wide range of home styles and sizes means there will be something for everyone.

Interior layouts have been carefully designed to maximise space and flexibility, complemented by a stylish, high quality specification.

Redrow's customary attention to detail can be seen throughout, evident in everything from Siemens kitchen appliances, to stylish modern sanitaryware, flooring and lighting.



## Flexible open plan living layouts

Open plan kitchen, dining and living spaces are ideal for family living and entertaining friends at home.



## Carefully chosen

Our close attention to detail means you will have the best of everything: from kitchen appliances to bathrooms.



## Superior finish

Quality fixtures and fittings and a high specification give these new homes a premium feel.



## Customer service

Always a priority for Redrow, making buying your new home a pleasure.

## THE FINEST INGREDIENTS

Cooking for family and friends is a pleasure when you have a kitchen like this to work in. A choice of contemporary units is paired with premium Siemens appliances and thin profile laminate or stone worktops. Back painted glass splashbacks provide a stylish touch, and engineered timber flooring makes a practical yet elegant floor.

Underfloor heating adds the ultimate comfort: you won't know how good it feels until you experience it.

# INSIDE AND OUTSIDE

Your living room is a spacious and completely relaxing place to be, extending onto a private balcony or terrace for that indoor-outdoor lifestyle.



COLINDALE  
GARDENS  
LONDON NW9



## SWEET DREAMS

In your bedroom, you'll have the perfect view to wake up to, or fall asleep to. All master bedrooms boast built in wardrobes with sliding doors, for organised storage, while all 2 and 3 bedroom apartments also have an en suite bathroom.



# SPECIFICATION

## KITCHEN

- Interior designed fitted kitchens
- Gloss cabinet doors with soft close, handle-less design and feature lighting
- Slim line laminate worktop
- Full height back painted glass splashback
- Stainless steel sink with satin chrome mixer tap
- Siemens single oven
- Siemens integrated microwave
- Siemens four zone ceramic hob with integrated telescopic hood
- Siemens integrated dishwasher\*
- Siemens 50/50 fridge freezer
- Free standing washer-dryer located in hallway cupboard or kitchen\*\*
- Recycling bin
- Cutlery drawer inserts

## BATHROOM / EN SUITE

- Porcelain wall and floor tiles
- Bespoke designed vanity unit with mirrored door and feature halo lighting
- Wall mounted washbasin
- Wall mounted WC with concealed cistern, aquablade technology and polished chrome dual flush button
- White steel bath with timber effect bath panel with feature LED lighting (to all bathrooms)
- White shower tray with sliding shower door (to all en suites)
- Recessed tiled shelf to bath and shower
- Shaver socket concealed in cabinet
- Polished chrome electric heated towel rail
- Toilet roll holder

## ELECTRICS

- Satin chrome dimmer switches to kitchen/living/dining area
- High level satin chrome sockets to hallway and kitchen/living/dining area
- LED downlights to hallway, kitchen/living/dining area and bathrooms
- Pendant lighting to all bedrooms
- Wiring for digital TV and wiring only for Sky+HD to living area and bedroom 1
- USB charging points to living space and bedroom 1
- Colour video door entry system
- Fob entry system to apartment block

## JOINERY

- Oak veneer apartment entrance and internal doors
- Feature skirtings and architraves
- Fitted wardrobe with 3 panel sliding door, hanging rail and high level shelf to bedroom 1

## WALL AND FLOOR FINISHES

- White emulsion painted internal walls and ceilings
- Engineered wood flooring to hallway, kitchen/living/dining area
- Carpet to all bedrooms, stairs and landings

## HEATING

- Underfloor heating throughout

## COMMUNAL AREAS

- Landscaped gardens
- Interior designed shared areas with feature lighting
- Lift to all floors
- Concierge service†
- Access to residents-only gym, sauna and steam room

## GENERAL

- 2 year Redrow Warranty
- 10 year LABC building warranty
- 999 year lease from January 2017
- Parking available at additional cost\*\*\*
- Balcony or terrace area to all apartments with decking and external lighting

## OPTIONAL EXTRAS†

- Silestone worktops
- Engineered wood flooring throughout
- Additional wardrobe in bedrooms 2, 3 and 4
- All walls tiled in bathroom or en suite

\* Dishwashers vary in size

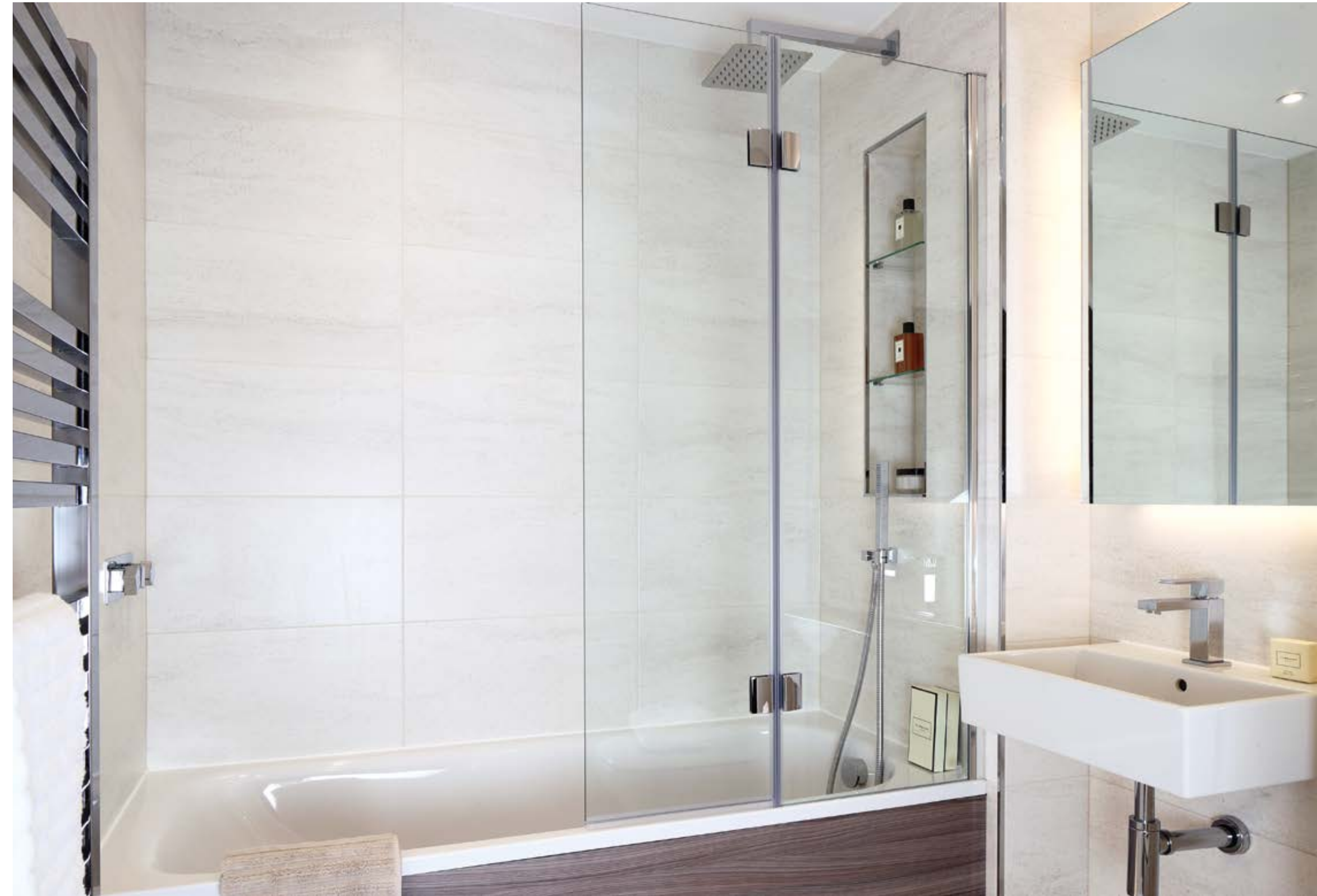
\*\* Location of washer-dryers may vary

\*\*\* Please ask a sales consultant for further info on parking

† Concierge service will be in a central location within the development

‡ Optional extras available at an additional cost. Wardrobe sizes may vary, additional wardrobes available on selected plots only

Your attention is drawn to the fact it may not be possible to obtain the products as referred to in the specification. In such cases, a similar alternative will be provided. Redrow reserve the right to make these changes. Please ask a sales consultant for further information





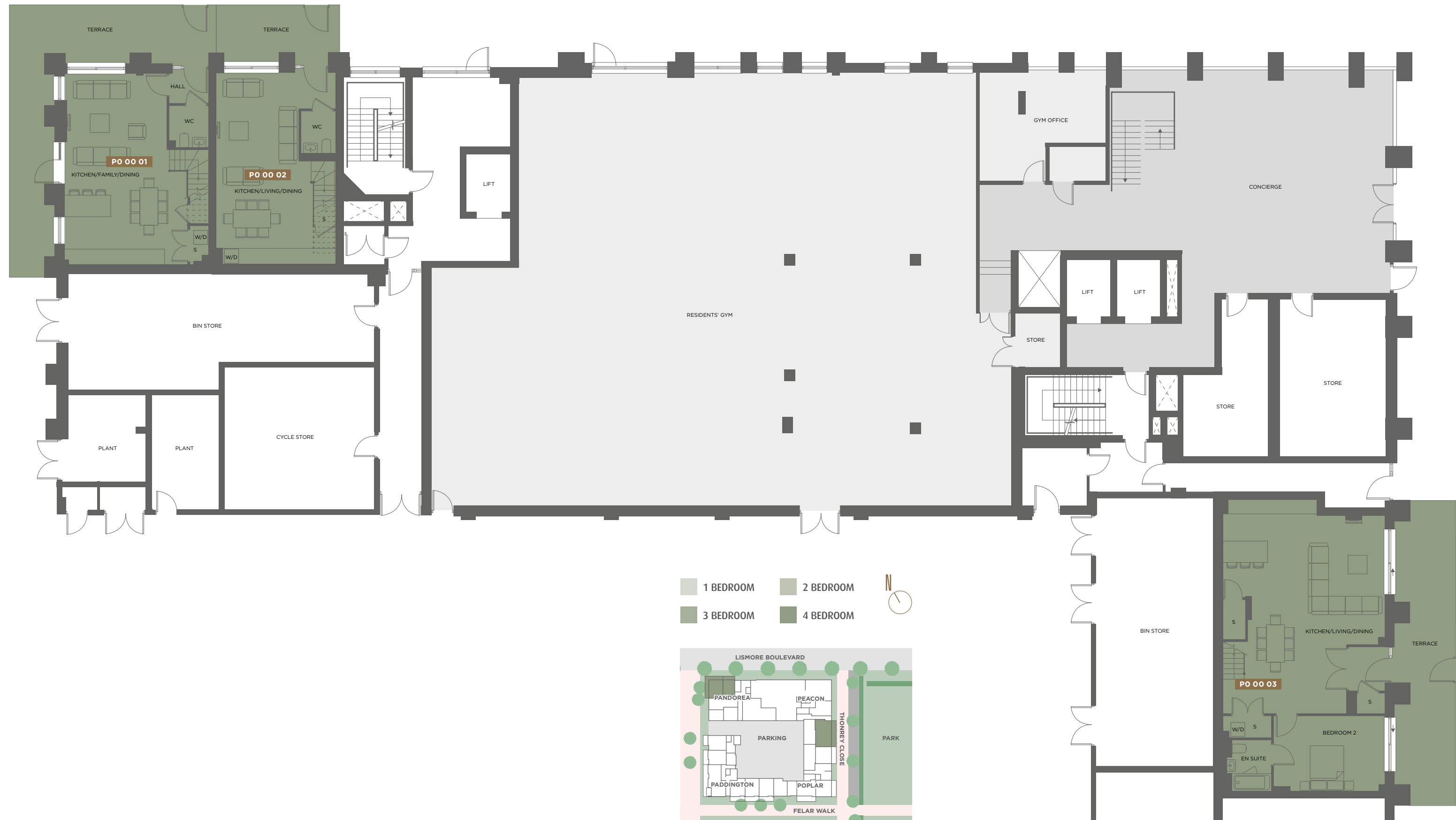
# PANDOREA AND PEACON HOUSE

## GROUND FLOOR

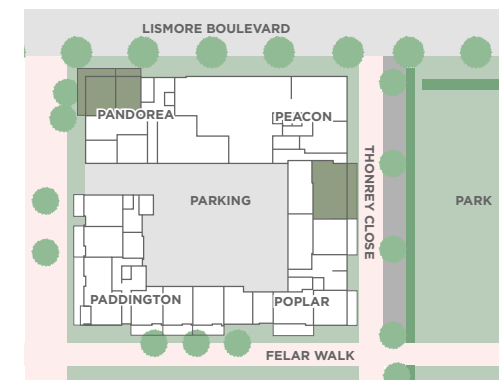
<b>PLOT: PO 00 01 (LOWER LEVEL)</b> 4 BEDROOM PARK WALK TOWNHOUSE	TYPE 1
Kitchen/Family/Dining	8.22 m x 5.29 m 26' 11" x 17' 4"
Total Internal Area	143.0 sq m 1,539 sq ft

<b>PLOT: PO 00 02 (LOWER LEVEL)</b> 4 BEDROOM PARK WALK TOWNHOUSE	TYPE 2
Kitchen/Living/Dining	8.21 m x 4.22 m 26' 11" x 13' 10"
Total Internal Area	133.0 sq m 1,432 sq ft

<b>PLOT: PO 00 03 (LOWER LEVEL)</b> 4 BEDROOM PARK WALK TOWNHOUSE	TYPE 3
Kitchen/Living/Dining	9.19 m x 6.95 m 30' 1" x 22' 9"
Bedroom 2	4.75 m x 3.19 m 15' 6" x 10' 5"
Total Internal Area	154.5 sq m 1,663 sq ft



- 1 BEDROOM
- 2 BEDROOM
- 3 BEDROOM
- 4 BEDROOM



# PANDOREA AND PEACON HOUSE

## FIRST FLOOR

**PLOT: PO 00 01 (UPPER LEVEL)**  
4 BEDROOM PARK WALK TOWNHOUSE

		TYPE 1
Living Room	4.40 m x 3.25 m	14' 4" x 10' 7"
Bedroom 1	3.68 m x 2.84 m	12' 0" x 9' 3"
Bedroom 2	4.55 m x 3.24 m	14' 11" x 10' 7"
Bedroom 3	3.20 m x 3.15 m	10' 5" x 10' 3"
Bedroom 4	3.29 m x 2.63 m	10' 9" x 8' 7"
Total Internal Area	143.0 sq m	1,539 sq ft

**PLOT: PO 00 02 (UPPER LEVEL)**  
4 BEDROOM PARK WALK TOWNHOUSE

		TYPE 2
Bedroom 1	6.36 m x 3.52 m	20' 10" x 11' 6"
Bedroom 2	5.12 m x 2.95 m	16' 9" x 9' 8"
Bedroom 3	4.83 m x 2.80 m	15' 10" x 9' 2"
Bedroom 4	3.68 m x 2.22 m	12' 0" x 7' 3"
Total Internal Area	133.0 sq m	1,432 sq ft

**PLOT: P1 01 01**  
1 BEDROOM APARTMENT

		TYPE 13
Kitchen/Living/Dining	4.98 m x 4.92 m	16' 4" x 16' 1"
Bedroom	3.90 m x 3.67 m	12' 9" x 12' 0"
Total Internal Area	55.0 sq m	592 sq ft

**PLOT: P1 01 02**  
3 BEDROOM APARTMENT

		TYPE 14
Kitchen/Living/Dining	7.14 m x 5.47 m	23' 5" x 17' 11"
Bedroom 1	5.62 m x 2.92 m	18' 5" x 9' 6"
Bedroom 2	4.60 m x 3.22 m	15' 1" x 10' 6"
Bedroom 3	3.85 m x 2.75 m	12' 7" x 9' 0"
Total Internal Area	104.0 sq m	1,119 sq ft

**PLOT: P1 01 03**  
2 BEDROOM APARTMENT

		TYPE 15
Kitchen/Living/Dining	6.92 m x 3.75 m	22' 8" x 12' 3"
Bedroom 1	4.62 m x 2.83 m	15' 1" x 9' 3"
Bedroom 2	2.57 m x 2.52 m	8' 5" x 8' 2"
Total Internal Area	63.0 sq m	678 sq ft

**PLOT: P2 01 01**  
1 BEDROOM APARTMENT

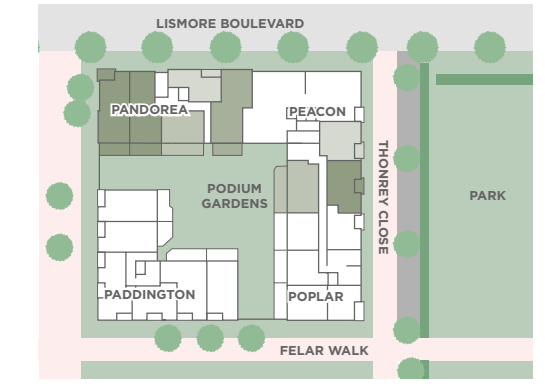
		TYPE 16
Kitchen/Living/Dining	8.62 m x 4.65 m	28' 3" x 15' 2"
Bedroom	3.44 m x 3.42 m	11' 3" x 11' 2"
Total Internal Area	64.0 sq m	689 sq ft

**PLOT: P2 01 02**  
2 BEDROOM APARTMENT

		TYPE 19
Kitchen/Living/Dining	6.52 m x 4.24 m	21' 4" x 13' 10"
Bedroom 1	4.22 m x 3.30 m	13' 10" x 10' 9"
Bedroom 2	3.81 m x 3.47 m	12' 5" x 11' 4"
Total Internal Area	71.0 sq m	764 sq ft

**PLOT: PO 00 03 (UPPER LEVEL)**  
4 BEDROOM PARK WALK TOWNHOUSE

		TYPE 3
Bedroom 1	4.65 m x 3.38 m	15' 2" x 11' 1"
Bedroom 3	4.65 m x 3.20 m	15' 2" x 10' 5"
Bedroom 4	3.30 m x 3.14 m	10' 9" x 10' 3"
Total Internal Area	154.5 sq m	1,663 sq ft



# PANDOREA AND PEACON HOUSE

## SECOND FLOOR

<b>PLOT: P1 02 01</b> 1 BEDROOM APARTMENT	TYPE 13	
Kitchen/Living/Dining	4.98 m x 4.92 m	16' 4" x 16' 1"
Bedroom	3.90 m x 3.67 m	12' 9" x 12' 0"
Total Internal Area	55.0 sq m	592 sq ft

<b>PLOT: P1 02 02</b> 3 BEDROOM APARTMENT	TYPE 21	
Kitchen/Living/Dining	6.43 m x 5.07 m	21' 1" x 16' 7"
Bedroom 1	5.05 m x 3.29 m	16' 6" x 10' 9"
Bedroom 2	4.24 m x 3.25 m	13' 10" x 10' 7"
Bedroom 3	4.48 m x 2.90 m	14' 8" x 9' 6"
Total Internal Area	100.5 sq m	1,082 sq ft

<b>PLOT: P1 02 03</b> STUDIO APARTMENT	TYPE 22	
Kitchen/Living/Dining	5.62 m x 3.77 m	18' 5" x 12' 4"
Bedroom	3.92 m x 2.70 m	12' 10" x 8' 10"
Total Internal Area	45.0 sq m	484 sq ft

<b>PLOT: P1 02 04</b> 2 BEDROOM APARTMENT	TYPE 45	
Kitchen/Living/Dining	6.92 m x 4.01 m	22' 8" x 13' 1"
Bedroom 1	4.62 m x 2.80 m	15' 1" x 9' 2"
Bedroom 2	3.47 m x 3.33 m	11' 4" x 10' 10"
Total Internal Area	72.0 sq m	775 sq ft

<b>PLOT: P1 02 05</b> 3 BEDROOM APARTMENT	TYPE 23	
Kitchen/Living/Dining	6.47 m x 4.56 m	21' 2" x 14' 11"
Bedroom 1	4.62 m x 2.80 m	15' 1" x 9' 2"
Bedroom 2	4.16 m x 2.92 m	13' 7" x 9' 6"
Bedroom 3	3.47 m x 2.77 m	11' 4" x 9' 1"
Total Internal Area	86.0 sq m	926 sq ft

<b>PLOT: P1 02 06</b> 3 BEDROOM APARTMENT	TYPE 24	
Kitchen/Living/Dining	6.25 m x 5.49 m	20' 6" x 18' 0"
Bedroom 1	4.38 m x 2.80 m	14' 4" x 9' 2"
Bedroom 2	4.28 m x 2.80 m	14' 0" x 9' 2"
Bedroom 3	3.23 m x 2.55 m	10' 7" x 8' 4"
Total Internal Area	88.0 sq m	947 sq ft

<b>PLOT: P2 02 01</b> 2 BEDROOM APARTMENT	TYPE 25	
Kitchen/Living/Dining	7.12 m x 3.60 m	23' 4" x 11' 8"
Bedroom 1	4.07 m x 3.35 m	13' 4" x 10' 11"
Bedroom 2	4.17 m x 2.85 m	13' 8" x 9' 4"
Total Internal Area	75.5 sq m	813 sq ft

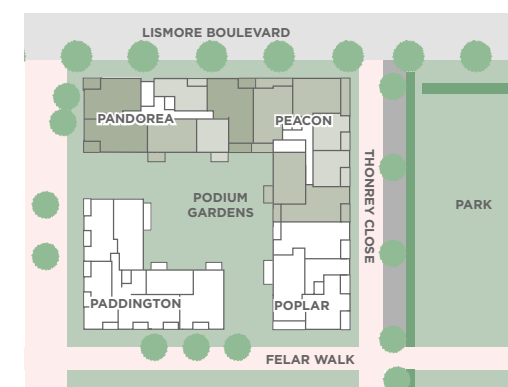
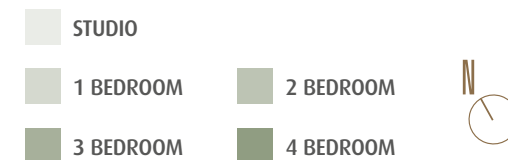
<b>PLOT: P2 02 02</b> 1 BEDROOM APARTMENT	TYPE 26	
Kitchen/Living/Dining	5.62 m x 4.06 m	18' 5" x 13' 3"
Bedroom	3.61 m x 3.18 m	11' 10" x 10' 5"
Total Internal Area	51.0 sq m	549 sq ft

<b>PLOT: P2 02 03</b> 1 BEDROOM APARTMENT	TYPE 27	
Kitchen/Living/Dining	5.62 m x 4.14 m	18' 5" x 13' 6"
Bedroom	3.22 m x 3.18 m	10' 6" x 10' 5"
Total Internal Area	51.0 sq m	549 sq ft

<b>PLOT: P2 02 04</b> 2 BEDROOM APARTMENT	TYPE 28	
Kitchen/Living/Dining	6.14 m x 4.31 m	20' 1" x 14' 1"
Bedroom 1	6.17 m x 3.37 m	20' 2" x 11' 0"
Bedroom 2	3.65 m x 3.60 m	11' 11" x 11' 9"
Total Internal Area	81.0 sq m	872 sq ft

<b>PLOT: P2 02 05</b> 2 BEDROOM APARTMENT	TYPE 29	
Kitchen/Living/Dining	6.52 m x 3.71 m	21' 4" x 12' 2"
Bedroom 1	4.06 m x 2.72 m	13' 3" x 8' 11"
Bedroom 2	4.27 m x 2.80 m	14' 0" x 9' 2"
Total Internal Area	71.0 sq m	764 sq ft

<b>PLOT: P2 02 06</b> 2 BEDROOM APARTMENT	TYPE 30	
Kitchen/Living/Dining	6.38 m x 4.49 m	20' 11" x 14' 8"
Bedroom 1	4.62 m x 3.35 m	15' 1" x 11' 11"
Bedroom 2	3.80 m x 3.51 m	12' 5" x 11' 6"
Total Internal Area	81.5 sq m	877 sq ft



# PANDOREA AND PEACON HOUSE

## THIRD FLOOR

<b>PLOT: P1 03 01</b> 1 BEDROOM APARTMENT	TYPE 13	
Kitchen/Living/Dining	4.98 m x 4.92 m	16' 4" x 16' 1"
Bedroom	3.90 m x 3.67 m	12' 9" x 12' 0"
Total Internal Area	55.0 sq m	592 sq ft

<b>PLOT: P1 03 02</b> 3 BEDROOM APARTMENT	TYPE 21	
Kitchen/Living/Dining	6.43 m x 5.07 m	21' 1" x 16' 7"
Bedroom 1	5.05 m x 3.29 m	16' 6" x 10' 9"
Bedroom 2	4.24 m x 3.25 m	13' 10" x 10' 7"
Bedroom 3	4.48 m x 2.90 m	14' 8" x 9' 6"
Total Internal Area	100.5 sq m	1,082 sq ft

<b>PLOT: P1 03 03</b> STUDIO APARTMENT	TYPE 22	
Kitchen/Living/Dining	5.62 m x 3.77 m	18' 5" x 12' 4"
Bedroom	3.92 m x 2.70 m	12' 10" x 8' 10"
Total Internal Area	45.0 sq m	484 sq ft

<b>PLOT: P1 03 04</b> 2 BEDROOM APARTMENT	TYPE 45	
Kitchen/Living/Dining	6.92 m x 4.01 m	22' 8" x 13' 1"
Bedroom 1	4.62 m x 2.80 m	15' 1" x 9' 2"
Bedroom 2	3.47 m x 3.33 m	11' 4" x 10' 10"
Total Internal Area	72.0 sq m	775 sq ft

<b>PLOT: P1 03 05</b> 3 BEDROOM APARTMENT	TYPE 23	
Kitchen/Living/Dining	6.47 m x 4.56 m	21' 2" x 14' 11"
Bedroom 1	4.62 m x 2.80 m	15' 1" x 9' 2"
Bedroom 2	4.16 m x 2.92 m	13' 7" x 9' 6"
Bedroom 3	3.47 m x 2.77 m	11' 4" x 9' 1"
Total Internal Area	86.0 sq m	926 sq ft

<b>PLOT: P1 03 06</b> 3 BEDROOM APARTMENT	TYPE 24	
Kitchen/Living/Dining	6.25 m x 5.49 m	20' 6" x 18' 0"
Bedroom 1	4.38 m x 2.80 m	14' 4" x 9' 2"
Bedroom 2	4.28 m x 2.80 m	14' 0" x 9' 2"
Bedroom 3	3.23 m x 2.55 m	10' 7" x 8' 4"
Total Internal Area	88.0 sq m	947 sq ft

<b>PLOT: P2 03 01</b> 2 BEDROOM APARTMENT	TYPE 25	
Kitchen/Living/Dining	7.12 m x 3.60 m	23' 4" x 11' 8"
Bedroom 1	4.07 m x 3.35 m	13' 4" x 10' 11"
Bedroom 2	4.17 m x 2.85 m	13' 8" x 9' 4"
Total Internal Area	75.5 sq m	813 sq ft

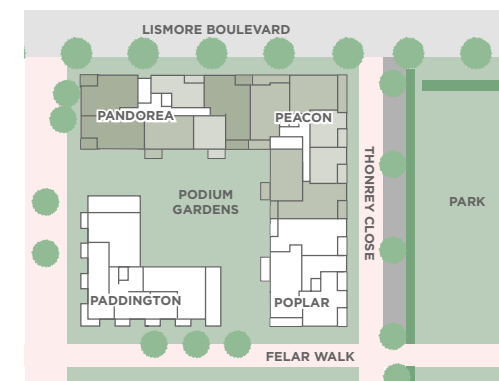
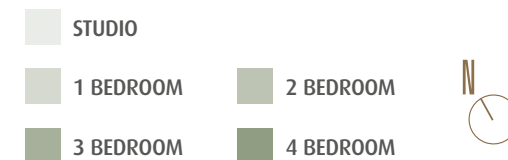
<b>PLOT: P2 03 02</b> 1 BEDROOM APARTMENT	TYPE 26	
Kitchen/Living/Dining	5.62 m x 4.06 m	18' 5" x 13' 3"
Bedroom	3.61 m x 3.18 m	11' 10" x 10' 5"
Total Internal Area	51.0 sq m	549 sq ft

<b>PLOT: P2 03 03</b> 1 BEDROOM APARTMENT	TYPE 27	
Kitchen/Living/Dining	5.62 m x 4.14 m	18' 5" x 13' 6"
Bedroom	3.22 m x 3.18 m	10' 6" x 10' 5"
Total Internal Area	51.0 sq m	549 sq ft

<b>PLOT: P2 03 04</b> 2 BEDROOM APARTMENT	TYPE 28	
Kitchen/Living/Dining	6.14 m x 4.31 m	20' 1" x 14' 1"
Bedroom 1	6.17 m x 3.37 m	20' 2" x 11' 0"
Bedroom 2	3.65 m x 3.60 m	11' 11" x 11' 9"
Total Internal Area	81.0 sq m	872 sq ft

<b>PLOT: P2 03 05</b> 2 BEDROOM APARTMENT	TYPE 29	
Kitchen/Living/Dining	6.52 m x 3.71 m	21' 4" x 12' 2"
Bedroom 1	4.06 m x 2.72 m	13' 3" x 8' 11"
Bedroom 2	4.27 m x 2.80 m	14' 0" x 9' 2"
Total Internal Area	71.0 sq m	764 sq ft

<b>PLOT: P2 03 06</b> 2 BEDROOM APARTMENT	TYPE 30	
Kitchen/Living/Dining	6.38 m x 4.49 m	20' 11" x 14' 8"
Bedroom 1	4.62 m x 3.35 m	15' 1" x 11' 11"
Bedroom 2	3.80 m x 3.51 m	12' 5" x 11' 6"
Total Internal Area	81.5 sq m	877 sq ft



# PANDORA AND PEACON HOUSE

## FOURTH FLOOR

<b>PLOT: P1 04 01</b> 1 BEDROOM APARTMENT	TYPE 13	
Kitchen/Living/Dining	4.98 m x 4.92 m	16' 4" x 16' 1"
Bedroom	3.90 m x 3.67 m	12' 9" x 12' 0"
Total Internal Area	55.0 sq m	592 sq ft

<b>PLOT: P1 04 02</b> 3 BEDROOM APARTMENT	TYPE 21	
Kitchen/Living/Dining	6.43 m x 5.07 m	21' 1" x 16' 7"
Bedroom 1	5.05 m x 3.29 m	16' 6" x 10' 9"
Bedroom 2	4.24 m x 3.25 m	13' 10" x 10' 7"
Bedroom 3	4.48 m x 2.90 m	14' 8" x 9' 6"
Total Internal Area	100.5 sq m	1,082 sq ft

<b>PLOT: P1 04 03</b> STUDIO APARTMENT	TYPE 22	
Kitchen/Living/Dining	5.62 m x 3.77 m	18' 5" x 12' 4"
Bedroom	3.92 m x 2.70 m	12' 10" x 8' 10"
Total Internal Area	45.0 sq m	484 sq ft

<b>PLOT: P1 04 04</b> 2 BEDROOM APARTMENT	TYPE 45	
Kitchen/Living/Dining	6.92 m x 4.01 m	22' 8" x 13' 1"
Bedroom 1	4.62 m x 2.80 m	15' 1" x 9' 2"
Bedroom 2	3.47 m x 3.33 m	11' 4" x 10' 10"
Total Internal Area	72.0 sq m	775 sq ft

<b>PLOT: P1 04 05</b> 3 BEDROOM APARTMENT	TYPE 23	
Kitchen/Living/Dining	6.47 m x 4.56 m	21' 2" x 14' 11"
Bedroom 1	4.62 m x 2.80 m	15' 1" x 9' 2"
Bedroom 2	4.16 m x 2.92 m	13' 7" x 9' 6"
Bedroom 3	3.47 m x 2.77 m	11' 4" x 9' 1"
Total Internal Area	86.0 sq m	926 sq ft

<b>PLOT: P1 04 06</b> 3 BEDROOM APARTMENT	TYPE 24	
Kitchen/Living/Dining	6.25 m x 5.49 m	20' 6" x 18' 0"
Bedroom 1	4.38 m x 2.80 m	14' 4" x 9' 2"
Bedroom 2	4.28 m x 2.80 m	14' 0" x 9' 2"
Bedroom 3	3.23 m x 2.55 m	10' 7" x 8' 4"
Total Internal Area	88.0 sq m	947 sq ft

<b>PLOT: P2 04 01</b> 2 BEDROOM APARTMENT	TYPE 25	
Kitchen/Living/Dining	7.12 m x 3.60 m	23' 4" x 11' 8"
Bedroom 1	4.07 m x 3.35 m	13' 4" x 10' 11"
Bedroom 2	4.17 m x 2.85 m	13' 8" x 9' 4"
Total Internal Area	75.5 sq m	813 sq ft

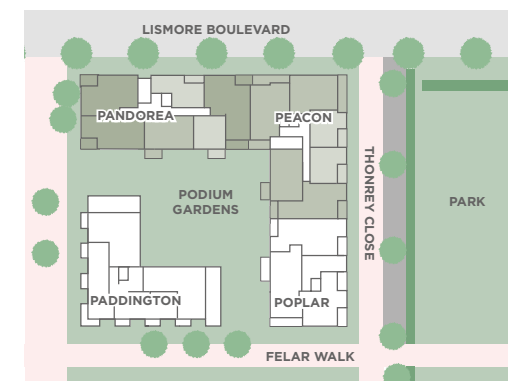
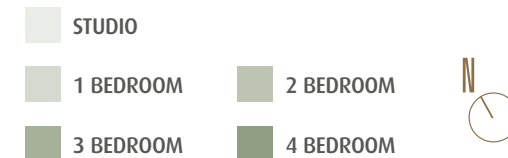
<b>PLOT: P2 04 02</b> 1 BEDROOM APARTMENT	TYPE 26	
Kitchen/Living/Dining	5.62 m x 4.06 m	18' 5" x 13' 3"
Bedroom	3.61 m x 3.18 m	11' 10" x 10' 5"
Total Internal Area	51.0 sq m	549 sq ft

<b>PLOT: P2 04 03</b> 1 BEDROOM APARTMENT	TYPE 27	
Kitchen/Living/Dining	5.62 m x 4.14 m	18' 5" x 13' 6"
Bedroom	3.22 m x 3.18 m	10' 6" x 10' 5"
Total Internal Area	51.0 sq m	549 sq ft

<b>PLOT: P2 04 04</b> 2 BEDROOM APARTMENT	TYPE 28	
Kitchen/Living/Dining	6.14 m x 4.31 m	20' 1" x 14' 1"
Bedroom 1	6.17 m x 3.37 m	20' 2" x 11' 0"
Bedroom 2	3.65 m x 3.60 m	11' 11" x 11' 9"
Total Internal Area	81.0 sq m	872 sq ft

<b>PLOT: P2 04 05</b> 2 BEDROOM APARTMENT	TYPE 29	
Kitchen/Living/Dining	6.52 m x 3.71 m	21' 4" x 12' 2"
Bedroom 1	4.06 m x 2.72 m	13' 3" x 8' 11"
Bedroom 2	4.27 m x 2.80 m	14' 0" x 9' 2"
Total Internal Area	71.0 sq m	764 sq ft

<b>PLOT: P2 04 06</b> 2 BEDROOM APARTMENT	TYPE 30	
Kitchen/Living/Dining	6.38 m x 4.49 m	20' 11" x 14' 8"
Bedroom 1	4.62 m x 3.35 m	15' 1" x 11' 11"
Bedroom 2	3.80 m x 3.51 m	12' 5" x 11' 6"
Total Internal Area	81.5 sq m	877 sq ft





# PANDOREA AND PEACON HOUSE FIFTH FLOOR

<b>PLOT: P1 05 01</b> 1 BEDROOM APARTMENT	TYPE 13	
Kitchen/Living/Dining	4.98 m x 4.92 m	16' 4" x 16' 1"
Bedroom	3.90 m x 3.67 m	12' 9" x 12' 0"
Total Internal Area	55.0 sq m	592 sq ft

<b>PLOT: P1 05 02</b> 3 BEDROOM APARTMENT	TYPE 21	
Kitchen/Living/Dining	6.43 m x 5.07 m	21' 1" x 16' 7"
Bedroom 1	5.05 m x 3.29 m	16' 6" x 10' 9"
Bedroom 2	4.24 m x 3.25 m	13' 10" x 10' 7"
Bedroom 3	4.48 m x 2.90 m	14' 8" x 9' 6"
Total Internal Area	100.5 sq m	1,082 sq ft

<b>PLOT: P1 05 03</b> STUDIO APARTMENT	TYPE 22	
Kitchen/Living/Dining	5.62 m x 3.77 m	18' 5" x 12' 4"
Bedroom	3.92 m x 2.70 m	12' 10" x 8' 10"
Total Internal Area	45.0 sq m	484 sq ft

<b>PLOT: P1 05 04</b> 2 BEDROOM APARTMENT	TYPE 45	
Kitchen/Living/Dining	6.92 m x 4.01 m	22' 8" x 13' 1"
Bedroom 1	4.62 m x 2.80 m	15' 1" x 9' 2"
Bedroom 2	3.47 m x 3.33 m	11' 4" x 10' 10"
Total Internal Area	72.0 sq m	775 sq ft

<b>PLOT: P1 05 05</b> 3 BEDROOM APARTMENT	TYPE 23	
Kitchen/Living/Dining	6.47 m x 4.56 m	21' 2" x 14' 11"
Bedroom 1	4.62 m x 2.80 m	15' 1" x 9' 2"
Bedroom 2	4.16 m x 2.92 m	13' 7" x 9' 6"
Bedroom 3	3.47 m x 2.77 m	11' 4" x 9' 1"
Total Internal Area	86.0 sq m	926 sq ft

<b>PLOT: P1 05 06</b> 3 BEDROOM APARTMENT	TYPE 24	
Kitchen/Living/Dining	6.25 m x 5.49 m	20' 6" x 18' 0"
Bedroom 1	4.38 m x 2.80 m	14' 4" x 9' 2"
Bedroom 2	4.28 m x 2.80 m	14' 0" x 9' 2"
Bedroom 3	3.23 m x 2.55 m	10' 7" x 8' 4"
Total Internal Area	88.0 sq m	947 sq ft

<b>PLOT: P2 05 01</b> 2 BEDROOM APARTMENT	TYPE 25	
Kitchen/Living/Dining	7.12 m x 3.60 m	23' 4" x 11' 8"
Bedroom 1	4.07 m x 3.35 m	13' 4" x 10' 11"
Bedroom 2	4.17 m x 2.85 m	13' 8" x 9' 4"
Total Internal Area	75.5 sq m	813 sq ft

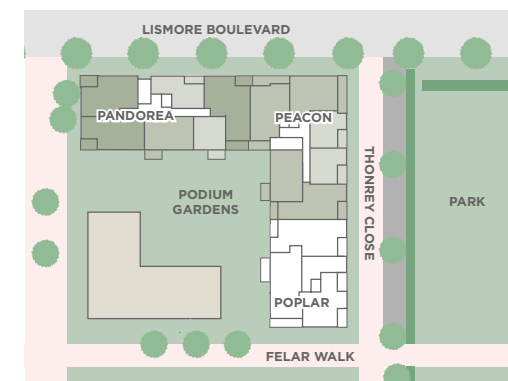
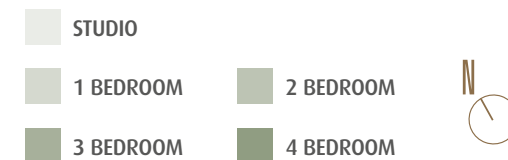
<b>PLOT: P2 05 02</b> 1 BEDROOM APARTMENT	TYPE 26	
Kitchen/Living/Dining	5.62 m x 4.06 m	18' 5" x 13' 3"
Bedroom	3.61 m x 3.18 m	11' 10" x 10' 5"
Total Internal Area	51.0 sq m	549 sq ft

<b>PLOT: P2 05 03</b> 1 BEDROOM APARTMENT	TYPE 27	
Kitchen/Living/Dining	5.62 m x 4.14 m	18' 5" x 13' 6"
Bedroom	3.22 m x 3.18 m	10' 6" x 10' 5"
Total Internal Area	51.0 sq m	549 sq ft

<b>PLOT: P2 05 04</b> 2 BEDROOM APARTMENT	TYPE 28	
Kitchen/Living/Dining	6.14 m x 4.31 m	20' 1" x 14' 1"
Bedroom 1	6.17 m x 3.37 m	20' 2" x 11' 0"
Bedroom 2	3.65 m x 3.60 m	11' 11" x 11' 9"
Total Internal Area	81.0 sq m	872 sq ft

<b>PLOT: P2 05 05</b> 2 BEDROOM APARTMENT	TYPE 29	
Kitchen/Living/Dining	6.52 m x 3.71 m	21' 4" x 12' 2"
Bedroom 1	4.06 m x 2.72 m	13' 3" x 8' 11"
Bedroom 2	4.27 m x 2.80 m	14' 0" x 9' 2"
Total Internal Area	71.0 sq m	764 sq ft

<b>PLOT: P2 05 06</b> 2 BEDROOM APARTMENT	TYPE 30	
Kitchen/Living/Dining	6.38 m x 4.49 m	20' 11" x 14' 8"
Bedroom 1	4.62 m x 3.35 m	15' 1" x 11' 11"
Bedroom 2	3.80 m x 3.51 m	12' 5" x 11' 6"
Total Internal Area	81.5 sq m	877 sq ft



# PANDOREA AND PEACON HOUSE

## SIXTH FLOOR

<b>PLOT: P1 06 01</b> 1 BEDROOM APARTMENT	TYPE 13	
Kitchen/Living/Dining	4.98 m x 4.92 m	16' 4" x 16' 1"
Bedroom	3.90 m x 3.67 m	12' 9" x 12' 0"
Total Internal Area	55.0 sq m	592 sq ft

<b>PLOT: P1 06 02</b> 3 BEDROOM APARTMENT	TYPE 43	
Kitchen/Living/Dining	6.45 m x 5.76 m	21' 2" x 18' 10"
Bedroom 1	3.97 m x 3.51 m	13' 0" x 11' 6"
Bedroom 2	5.61 m x 2.85 m	18' 4" x 9' 4"
Bedroom 3	4.82 m x 2.80 m	15' 9" x 9' 2"
Total Internal Area	113.0 sq m	1,216 sq ft

<b>PLOT: P1 06 03</b> 2 BEDROOM APARTMENT	TYPE 45	
Kitchen/Living/Dining	6.92 m x 4.01 m	22' 8" x 13' 1"
Bedroom 1	4.62 m x 2.80 m	15' 1" x 9' 2"
Bedroom 2	3.47 m x 3.33 m	11' 4" x 10' 10"
Total Internal Area	72.0 sq m	775 sq ft

<b>PLOT: P1 06 04</b> 3 BEDROOM APARTMENT	TYPE 23	
Kitchen/Living/Dining	6.47 m x 4.56 m	21' 2" x 14' 11"
Bedroom 1	4.62 m x 2.80 m	15' 1" x 9' 2"
Bedroom 2	4.16 m x 2.92 m	13' 7" x 9' 6"
Bedroom 3	3.47 m x 2.77 m	11' 4" x 9' 1"
Total Internal Area	86.0 sq m	926 sq ft

<b>PLOT: P1 06 05</b> 3 BEDROOM APARTMENT	TYPE 24	
Kitchen/Living/Dining	6.25 m x 5.49 m	20' 6" x 18' 0"
Bedroom 1	4.38 m x 2.80 m	14' 4" x 9' 2"
Bedroom 2	4.28 m x 2.80 m	14' 0" x 9' 2"
Bedroom 3	3.23 m x 2.55 m	10' 7" x 8' 4"
Total Internal Area	88.0 sq m	947 sq ft

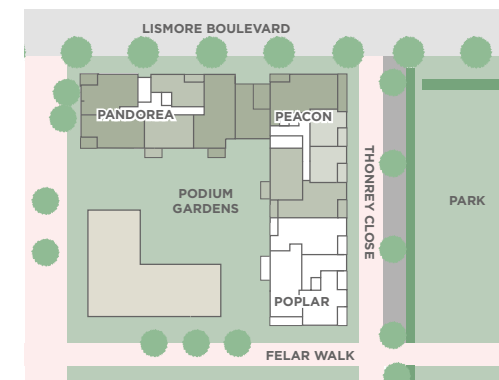
<b>PLOT: P2 06 01</b> 3 BEDROOM APARTMENT	TYPE 44	
Kitchen/Living/Dining	7.12 m x 6.63 m	23' 4" x 21' 8"
Bedroom 1	4.89 m x 3.16 m	16' 0" x 10' 4"
Bedroom 2	4.09 m x 3.19 m	13' 5" x 10' 5"
Bedroom 3	3.40 m x 3.30 m	11' 2" x 10' 10"
Total Internal Area	107.5 sq m	1,157 sq ft

<b>PLOT: P2 06 02</b> 1 BEDROOM APARTMENT	TYPE 26	
Kitchen/Living/Dining	5.62 m x 4.06 m	18' 5" x 13' 3"
Bedroom	3.61 m x 3.18 m	11' 10" x 10' 5"
Total Internal Area	51.0 sq m	549 sq ft

<b>PLOT: P2 06 03</b> 1 BEDROOM APARTMENT	TYPE 27	
Kitchen/Living/Dining	5.62 m x 4.14 m	18' 5" x 13' 6"
Bedroom	3.22 m x 3.18 m	10' 6" x 10' 5"
Total Internal Area	51.0 sq m	549 sq ft

<b>PLOT: P2 06 04</b> 2 BEDROOM APARTMENT	TYPE 28	
Kitchen/Living/Dining	6.14 m x 4.31 m	20' 1" x 14' 1"
Bedroom 1	6.17 m x 3.37 m	20' 2" x 11' 0"
Bedroom 2	3.65 m x 3.60 m	11' 11" x 11' 9"
Total Internal Area	81.0 sq m	872 sq ft

<b>PLOT: P2 06 05</b> 2 BEDROOM APARTMENT	TYPE 29	
Kitchen/Living/Dining	6.52 m x 3.71 m	21' 4" x 12' 2"
Bedroom 1	4.06 m x 2.72 m	13' 3" x 8' 11"
Bedroom 2	4.27 m x 2.80 m	14' 0" x 9' 2"
Total Internal Area	71.0 sq m	764 sq ft



# PEACON HOUSE SEVENTH FLOOR

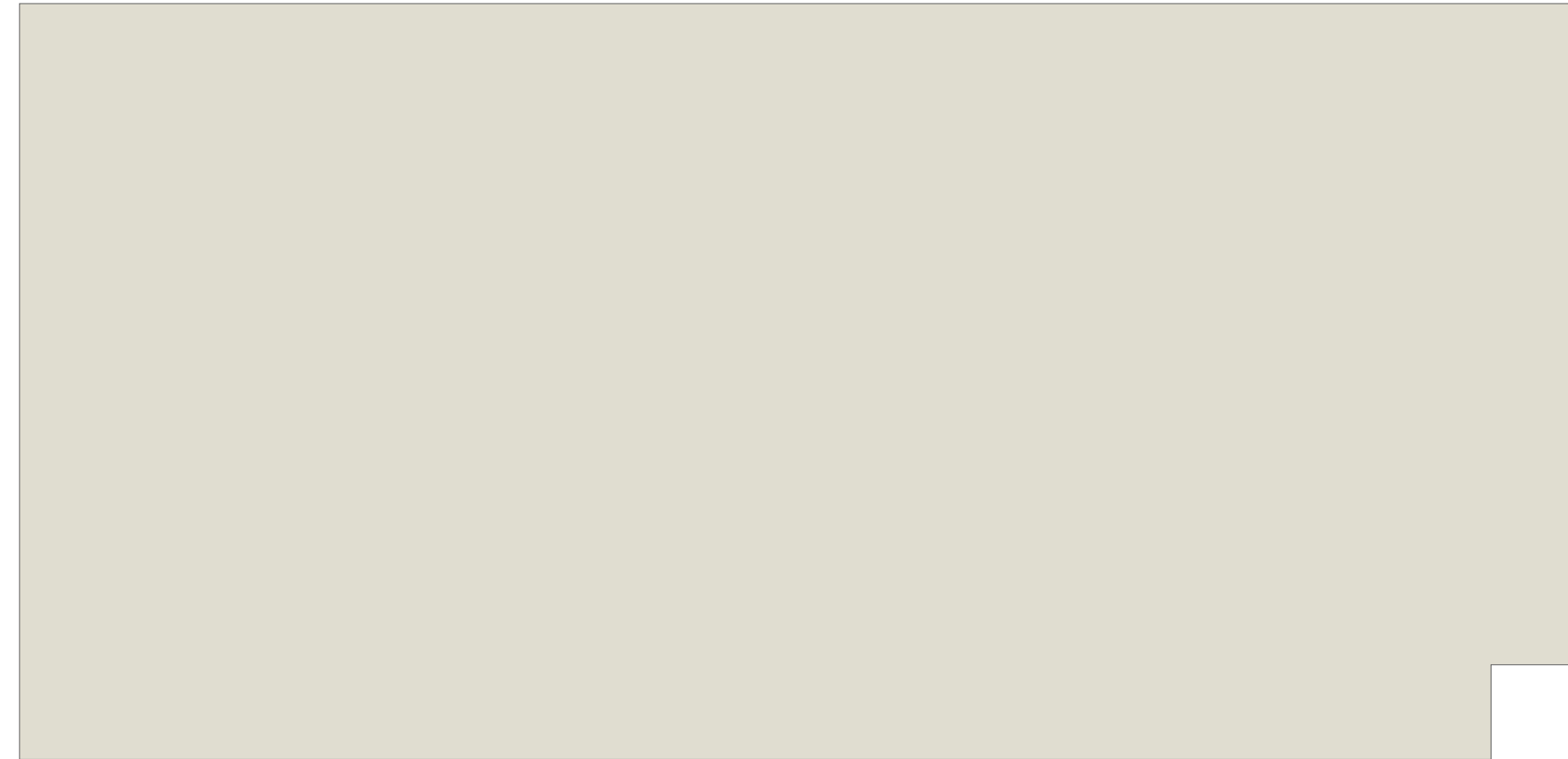
PLOT: P2 07 01 3 BEDROOM APARTMENT		TYPE 44
Kitchen/Living/Dining	7.12 m x 6.63 m	23' 4" x 21' 8"
Bedroom 1	4.89 m x 3.16 m	16' 0" x 10' 4"
Bedroom 2	4.09 m x 3.19 m	13' 5" x 10' 5"
Bedroom 3	3.40 m x 3.30 m	11' 2" x 10' 10"
Total Internal Area	107.5 sq m	1,157 sq ft

PLOT: P2 07 02 1 BEDROOM APARTMENT		TYPE 26
Kitchen/Living/Dining	5.62 m x 4.06 m	18' 5" x 13' 3"
Bedroom	3.61 m x 3.18 m	11' 10" x 10' 5"
Total Internal Area	51.0 sq m	549 sq ft

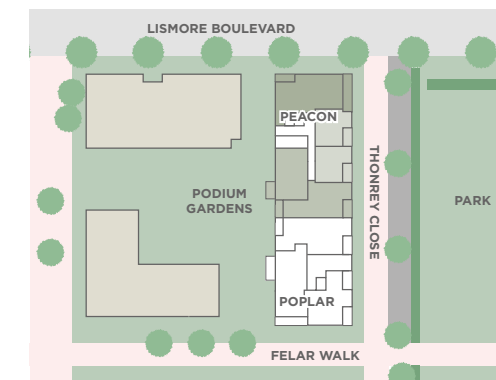
PLOT: P2 07 03 1 BEDROOM APARTMENT		TYPE 27
Kitchen/Living/Dining	5.62 m x 4.14 m	18' 5" x 13' 6"
Bedroom	3.22 m x 3.18 m	10' 6" x 10' 5"
Total Internal Area	51.0 sq m	549 sq ft

PLOT: P2 07 04 2 BEDROOM APARTMENT		TYPE 28
Kitchen/Living/Dining	6.14 m x 4.31 m	20' 1" x 14' 1"
Bedroom 1	6.17 m x 3.37 m	20' 2" x 11' 0"
Bedroom 2	3.65 m x 3.60 m	11' 11" x 11' 9"
Total Internal Area	81.0 sq m	872 sq ft

PLOT: P2 07 05 2 BEDROOM APARTMENT		TYPE 29
Kitchen/Living/Dining	6.52 m x 3.71 m	21' 4" x 12' 2"
Bedroom 1	4.06 m x 2.72 m	13' 3" x 8' 11"
Bedroom 2	4.27 m x 2.80 m	14' 0" x 9' 2"
Total Internal Area	71.0 sq m	764 sq ft



- 1 BEDROOM
- 2 BEDROOM
- 3 BEDROOM
- 4 BEDROOM



# PEACON HOUSE EIGHTH FLOOR

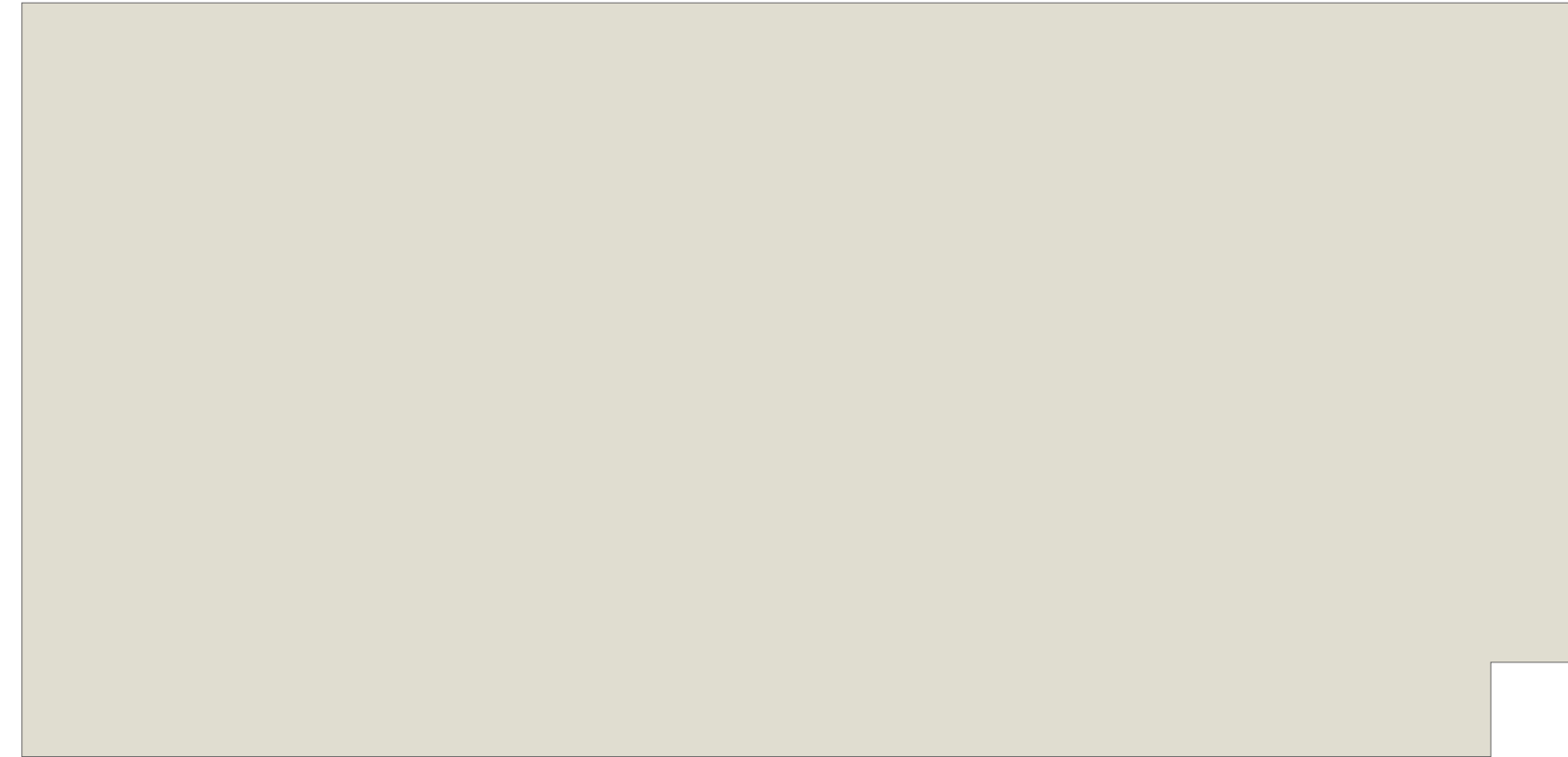
<b>PLOT: P2 08 01</b> 3 BEDROOM APARTMENT	TYPE 44	
Kitchen/Living/Dining	7.12 m x 6.63 m	23' 4" x 21' 8"
Bedroom 1	4.89 m x 3.16 m	16' 0" x 10' 4"
Bedroom 2	4.09 m x 3.19 m	13' 5" x 10' 5"
Bedroom 3	3.40 m x 3.30 m	11' 2" x 10' 10"
Total Internal Area	107.5 sq m	1,157 sq ft

<b>PLOT: P2 08 02</b> 1 BEDROOM APARTMENT	TYPE 26	
Kitchen/Living/Dining	5.62 m x 4.06 m	18' 5" x 13' 3"
Bedroom	3.61 m x 3.18 m	11' 10" x 10' 5"
Total Internal Area	51.0 sq m	549 sq ft

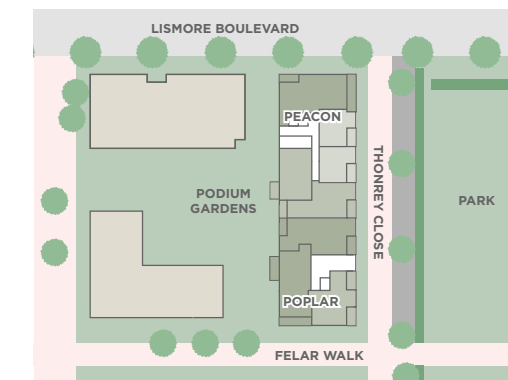
<b>PLOT: P2 08 03</b> 1 BEDROOM APARTMENT	TYPE 27	
Kitchen/Living/Dining	5.62 m x 4.14 m	18' 5" x 13' 6"
Bedroom	3.22 m x 3.18 m	10' 6" x 10' 5"
Total Internal Area	51.0 sq m	549 sq ft

<b>PLOT: P2 08 04</b> 2 BEDROOM APARTMENT	TYPE 28	
Kitchen/Living/Dining	6.14 m x 4.31 m	20' 1" x 14' 1"
Bedroom 1	6.17 m x 3.37 m	20' 2" x 11' 0"
Bedroom 2	3.65 m x 3.60 m	11' 11" x 11' 9"
Total Internal Area	81.0 sq m	872 sq ft

<b>PLOT: P2 08 05</b> 2 BEDROOM APARTMENT	TYPE 29	
Kitchen/Living/Dining	6.52 m x 3.71 m	21' 4" x 12' 2"
Bedroom 1	4.06 m x 2.72 m	13' 3" x 8' 11"
Bedroom 2	4.27 m x 2.80 m	14' 0" x 9' 2"
Total Internal Area	71.0 sq m	764 sq ft



- 1 BEDROOM
- 2 BEDROOM
- 3 BEDROOM
- 4 BEDROOM



# PADDINGTON AND POPLAR HOUSE GROUND FLOOR

<b>PLOT: PO 00 07 (LOWER LEVEL)</b> 3 BEDROOM PARK WALK TOWNHOUSE	TYPE 7
Kitchen/Family/Dining	6.35 m x 5.82 m 20' 9" x 19' 1"
Total Internal Area	125.5 sq m 1,351 sq ft

<b>PLOT: PO 00 08 (LOWER LEVEL)</b> 4 BEDROOM PARK WALK TOWNHOUSE	TYPE 8
Kitchen/Family/Dining	6.15 m x 5.82 m 20' 2" x 19' 1"
Total Internal Area	140.0 sq m 1,507 sq ft

<b>PLOT: PO 00 09 (LOWER LEVEL)</b> 3 BEDROOM PARK WALK TOWNHOUSE	TYPE 9
Kitchen/Living/Dining	6.63 m x 5.90 m 21' 9" x 19' 6"
Total Internal Area	115.0 sq m 1,238 sq ft

<b>PLOT: PO 00 11 (LOWER LEVEL)</b> 3 BEDROOM PARK WALK TOWNHOUSE	TYPE 11
Kitchen/Family/Dining	6.35 m x 5.87 m 20' 9" x 19' 3"
Total Internal Area	126.0 sq m 1,356 sq ft

<b>PLOT: PO 00 12 (LOWER LEVEL)</b> 3 BEDROOM PARK WALK TOWNHOUSE	TYPE 12
Kitchen/Family/Dining	6.50 m x 5.87 m 21' 3" x 19' 3"
Total Internal Area	130.0 sq m 1,399 sq ft

<b>PLOT: PO 00 10</b> 2 BEDROOM APARTMENT	TYPE 10
Kitchen/Living/Dining	6.30 m x 5.71 m 20' 7" x 18' 8"
Bedroom 1	3.82 m x 3.51 m 12' 6" x 11' 6"
Bedroom 2	4.44 m x 2.97 m 14' 6" x 9' 9"
Total Internal Area	88.5 sq m 953 sq ft



<b>PLOT: PO 00 04 (LOWER LEVEL)</b> 2 BEDROOM PARK WALK TOWNHOUSE	TYPE 4
Kitchen/Living/Dining	6.95 m x 5.47 m 22' 9" x 17' 11"
Total Internal Area	105.5 sq m 1,136 sq ft

<b>PLOT: PO 00 05 (LOWER LEVEL)</b> 2 BEDROOM PARK WALK TOWNHOUSE	TYPE 5
Kitchen/Living/Dining	6.85 m x 5.86 m 22' 5" x 19' 2"
Total Internal Area	96.5 sq m 1,039 sq ft

<b>PLOT: PO 00 06 (LOWER LEVEL)</b> 3 BEDROOM PARK WALK TOWNHOUSE	TYPE 6
Kitchen/Living/Dining	6.53 m x 6.26 m 21' 4" x 20' 6"
Total Internal Area	118.0 sq m 1,270 sq ft



# PADDINGTON AND POPLAR HOUSE

## FIRST FLOOR

**PLOT: PO 00 07 (UPPER LEVEL)**  
3 BEDROOM PARK WALK TOWNHOUSE TYPE 7

Living Room	4.58 m x 3.40 m	15' 0" x 11' 1"
Bedroom 1	3.44 m x 2.85 m	11' 3" x 9' 4"
Bedroom 2	4.16 m x 2.85 m	13' 7" x 9' 4"
Bedroom 3	4.56 m x 2.80 m	14' 11" x 9' 2"
Total Internal Area	125.5 sq m	1,351 sq ft

**PLOT: PO 00 08 (UPPER LEVEL)**  
4 BEDROOM PARK WALK TOWNHOUSE TYPE 8

Living Room	4.37 m x 4.34 m	14' 4" x 14' 2"
Bedroom 1	3.43 m x 2.78 m	11' 3" x 9' 1"
Bedroom 2	4.58 m x 2.80 m	15' 0" x 9' 2"
Bedroom 3	4.14 m x 2.69 m	13' 6" x 8' 10"
Bedroom 4	3.22 m x 2.69 m	10' 6" x 8' 10"
Total Internal Area	140.0 sq m	1,507 sq ft

**PLOT: PO 00 09 (UPPER LEVEL)**  
3 BEDROOM PARK WALK TOWNHOUSE TYPE 9

Bedroom 1	3.90 m x 3.25 m	12' 9" x 10' 7"
Bedroom 2	5.13 m x 2.85 m	16' 9" x 9' 4"
Bedroom 3	3.55 m x 3.09 m	11' 7" x 10' 1"
Total Internal Area	115.0 sq m	1,238 sq ft

**PLOT: PO 00 11 (UPPER LEVEL)**  
3 BEDROOM PARK WALK TOWNHOUSE TYPE 11

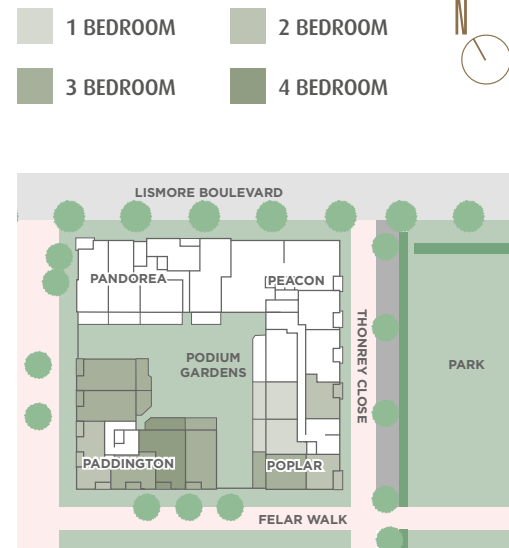
Living Room	4.56 m x 3.40 m	14' 11" x 11' 1"
Bedroom 1	3.44 m x 2.85 m	11' 3" x 9' 4"
Bedroom 2	4.56 m x 2.80 m	14' 11" x 9' 2"
Bedroom 3	4.16 m x 3.85 m	13' 7" x 12' 7"
Total Internal Area	126.0 sq m	1,356 sq ft

**PLOT: PO 00 12 (UPPER LEVEL)**  
3 BEDROOM PARK WALK TOWNHOUSE TYPE 12

Living Room	4.58 m x 3.41 m	15' 0" x 11' 2"
Bedroom 1	3.44 m x 2.78 m	11' 3" x 9' 1"
Bedroom 2	4.45 m x 3.04 m	14' 6" x 9' 11"
Bedroom 3	4.27 m x 3.15 m	14' 0" x 10' 3"
Total Internal Area	130.0 sq m	1,399 sq ft

**PLOT: P4 01 01**  
2 BEDROOM APARTMENT TYPE 20

Kitchen/Living/Dining	7.14 m x 4.54 m	23' 5" x 14' 10"
Bedroom 1	4.64 m x 3.09 m	15' 2" x 10' 1"
Bedroom 2	4.24 m x 2.91 m	13' 10" x 9' 6"
Total Internal Area	76.0 sq m	818 sq ft



**PLOT: PO 00 04 (UPPER LEVEL)**  
2 BEDROOM PARK WALK TOWNHOUSE TYPE 4

Bedroom 1	4.77 m x 3.61 m	15' 7" x 11' 10"
Bedroom 2	3.94 m x 3.42 m	12' 11" x 11' 2"
Total Internal Area	105.5 sq m	1,136 sq ft

**PLOT: PO 00 05 (UPPER LEVEL)**  
2 BEDROOM PARK WALK TOWNHOUSE TYPE 5

Bedroom 1	4.10 m x 3.32 m	13' 5" x 10' 10"
Bedroom 2	3.94 m x 3.20 m	12' 11" x 10' 5"
Total Internal Area	96.5 sq m	1,039 sq ft

**PLOT: PO 00 06 (UPPER LEVEL)**  
3 BEDROOM PARK WALK TOWNHOUSE TYPE 6

Bedroom 1	3.34 m x 2.86 m	10' 11" x 9' 4"
Bedroom 2	4.53 m x 2.76 m	14' 10" x 9' 0"
Bedroom 3	3.78 m x 3.66 m	12' 4" x 12' 0"
Total Internal Area	118.0 sq m	1,270 sq ft

**PLOT: P3 01 01**  
1 BEDROOM APARTMENT TYPE 17

Kitchen/Living/Dining	8.48 m x 3.90 m	27' 9" x 12' 9"
Bedroom	4.32 m x 3.30 m	14' 2" x 10' 9"
Total Internal Area	53.0 sq m	570 sq ft

**PLOT: P3 01 02**  
1 BEDROOM APARTMENT TYPE 18

Kitchen/Living/Dining	6.52 m x 4.36 m	21' 4" x 14' 3"
Bedroom	4.32 m x 3.30 m	14' 2" x 10' 9"
Total Internal Area	50.5 sq m	544 sq ft

# PADDINGTON AND POPLAR HOUSE

## SECOND FLOOR

PLOT: P4 02 02		TYPE 35	
3 BEDROOM APARTMENT			
Kitchen/Living/Dining	6.52 m x 6.22 m	21' 4" x 20' 4"	
Bedroom 1	4.37 m x 2.80 m	14' 3" x 9' 2"	
Bedroom 2	4.49 m x 2.90 m	14' 8" x 9' 6"	
Bedroom 3	3.75 m x 3.30 m	12' 3" x 10' 9"	
Total Internal Area	95.0 sq m	1,023 sq ft	

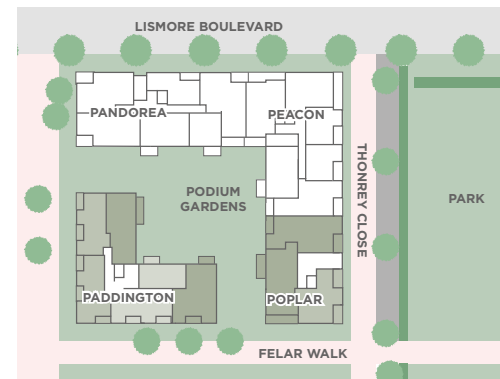
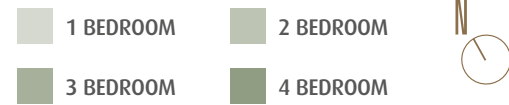
PLOT: P4 02 01		TYPE 34	
1 BEDROOM APARTMENT			
Kitchen/Living/Dining	5.72 m x 4.98 m	18' 9" x 16' 4"	
Bedroom	4.98 m x 2.80 m	16' 4" x 9' 2"	
Total Internal Area	51.0 sq m	549 sq ft	

PLOT: P4 02 04		TYPE 20	
2 BEDROOM APARTMENT			
Kitchen/Living/Dining	7.14 m x 4.54 m	23' 5" x 14' 10"	
Bedroom 1	4.64 m x 3.09 m	15' 2" x 10' 1"	
Bedroom 2	4.24 m x 2.91 m	13' 10" x 9' 6"	
Total Internal Area	76.0 sq m	818 sq ft	

PLOT: P4 02 03		TYPE 36	
2 BEDROOM APARTMENT			
Kitchen/Living/Dining	6.20 m x 4.29 m	20' 4" x 14' 0"	
Bedroom 1	3.34 m x 3.05 m	10' 11" x 10' 0"	
Bedroom 2/Study	2.87 m x 2.72 m	9' 4" x 8' 10"	
Total Internal Area	62.5 sq m	673 sq ft	

PLOT: P4 02 05		TYPE 37	
2 BEDROOM APARTMENT			
Kitchen	2.85 m x 2.79 m	9' 4" x 9' 1"	
Living/Dining	4.57 m x 4.38 m	14' 11" x 14' 4"	
Bedroom 1	2.90 m x 2.85 m	9' 5" x 9' 4"	
Bedroom 2	3.49 m x 3.42 m	11' 5" x 11' 2"	
Total Internal Area	71.0 sq m	764 sq ft	

PLOT: P4 02 06		TYPE 38	
3 BEDROOM APARTMENT			
Kitchen/Living/Dining	6.13 m x 5.95 m	20' 1" x 19' 6"	
Bedroom 1	3.57 m x 3.46 m	11' 8" x 11' 4"	
Bedroom 2	3.81 m x 2.97 m	12' 5" x 9' 8"	
Bedroom 3	3.81 m x 2.55 m	12' 5" x 8' 4"	
Total Internal Area	86.5 sq m	931 sq ft	



PLOT: P3 02 01		TYPE 31	
2 BEDROOM APARTMENT			
Kitchen/Living/Dining	7.24 m x 4.66 m	23' 9" x 15' 3"	
Bedroom 1	3.37 m x 3.30 m	11' 1" x 10' 9"	
Bedroom 2	3.78 m x 3.37 m	12' 4" x 11' 0"	
Total Internal Area	75.5 sq m	813 sq ft	

PLOT: P3 02 02		TYPE 32	
3 BEDROOM APARTMENT			
Kitchen/Living/Dining	6.69 m x 4.77 m	21' 11" x 15' 7"	
Bedroom 1	6.51 m x 2.96 m	21' 4" x 9' 8"	
Bedroom 2	5.37 m x 2.80 m	17' 7" x 9' 2"	
Bedroom 3	3.67 m x 3.08 m	12' 0" x 10' 1"	
Total Internal Area	95.0 sq m	1,023 sq ft	

PLOT: P3 02 03		TYPE 33	
3 BEDROOM APARTMENT			
Kitchen/Living/Dining	7.86 m x 4.76 m	25' 9" x 15' 7"	
Bedroom 1	3.53 m x 2.80 m	11' 6" x 9' 2"	
Bedroom 2	4.03 m x 2.76 m	13' 2" x 9' 0"	
Bedroom 3	3.94 m x 2.70 m	12' 11" x 8' 10"	
Total Internal Area	101.0 sq m	1,087 sq ft	

# PADDINGTON AND POPLAR HOUSE

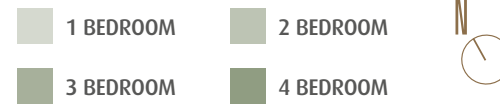
## THIRD FLOOR

PLOT: P4 03 01		TYPE 39
3 BEDROOM APARTMENT		
Kitchen/Living/Dining	7.08 m x 5.84 m	23' 2" x 19' 1"
Bedroom 1	4.69 m x 3.83 m	15' 4" x 12' 6"
Bedroom 2	3.83 m x 3.10 m	12' 6" x 10' 2"
Bedroom 3	3.84 m x 3.15 m	12' 6" x 10' 4"
Total Internal Area	102.5 sq m	1,103 sq ft

PLOT: P4 03 02		TYPE 40
2 BEDROOM APARTMENT		
Kitchen/Living/Dining	5.78 m x 5.71 m	18' 11" x 18' 8"
Bedroom 1	3.89 m x 3.25 m	12' 9" x 10' 7"
Bedroom 2	3.08 m x 3.05 m	10' 1" x 10' 0"
Total Internal Area	63.0 sq m	678 sq ft

PLOT: P4 03 03		TYPE 41
2 BEDROOM APARTMENT		
Kitchen/Living/Dining	6.16 m x 5.32 m	20' 2" x 17' 5"
Bedroom 1	3.97 m x 2.75 m	13' 0" x 9' 0"
Bedroom 2	3.48 m x 2.86 m	11' 5" x 9' 4"
Total Internal Area	72.0 sq m	775 sq ft

PLOT: P4 03 04		TYPE 42
3 BEDROOM APARTMENT		
Kitchen/Living/Dining	7.70 m x 5.21 m	25' 2" x 17' 0"
Bedroom 1	4.36 m x 2.98 m	14' 3" x 9' 9"
Bedroom 2	4.41 m x 2.89 m	14' 5" x 9' 5"
Bedroom 3	3.75 m x 3.01 m	12' 3" x 9' 10"
Total Internal Area	103.0 sq m	1,109 sq ft



PLOT: P3 03 01		TYPE 31
2 BEDROOM APARTMENT		
Kitchen/Living/Dining	7.24 m x 4.66 m	23' 9" x 15' 3"
Bedroom 1	3.37 m x 3.30 m	11' 1" x 10' 9"
Bedroom 2	3.78 m x 3.37 m	12' 4" x 11' 0"
Total Internal Area	75.5 sq m	813 sq ft

PLOT: P3 03 02		TYPE 32
3 BEDROOM APARTMENT		
Kitchen/Living/Dining	6.69 m x 4.77 m	21' 11" x 15' 7"
Bedroom 1	6.51 m x 2.96 m	21' 4" x 9' 8"
Bedroom 2	5.37 m x 2.80 m	17' 7" x 9' 2"
Bedroom 3	3.67 m x 3.08 m	12' 0" x 10' 1"
Total Internal Area	95.0 sq m	1,023 sq ft

PLOT: P3 03 03		TYPE 33
3 BEDROOM APARTMENT		
Kitchen/Living/Dining	7.86 m x 4.76 m	25' 9" x 15' 7"
Bedroom 1	3.53 m x 2.80 m	11' 6" x 9' 2"
Bedroom 2	4.03 m x 2.76 m	13' 2" x 9' 0"
Bedroom 3	3.94 m x 2.70 m	12' 11" x 8' 10"
Total Internal Area	101.0 sq m	1,087 sq ft



# POPLAR HOUSE FOURTH FLOOR

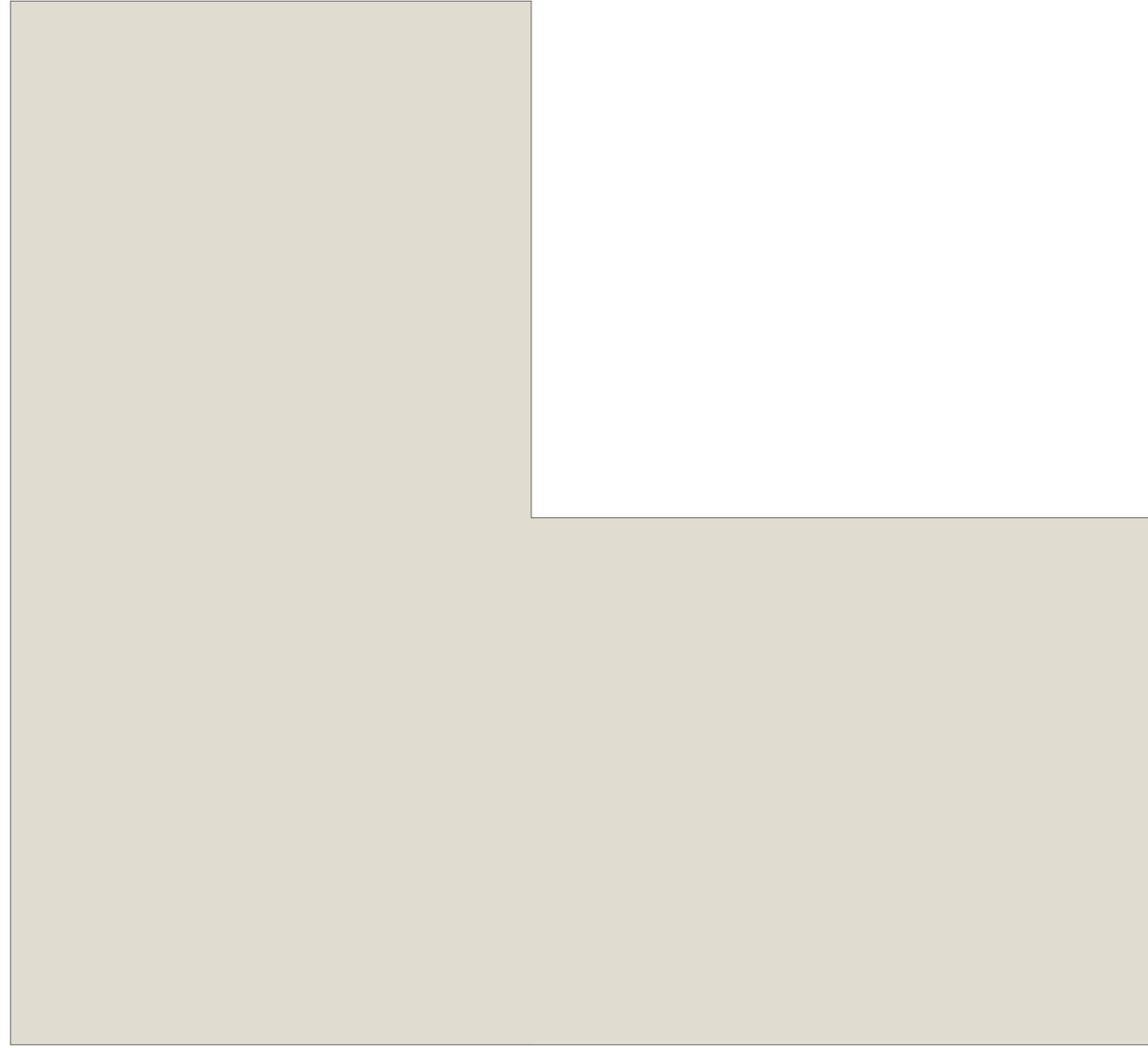
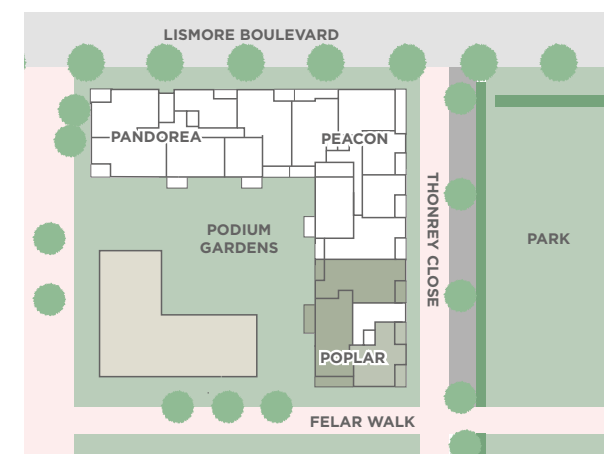
PLOT: P3 04 01 2 BEDROOM APARTMENT		TYPE 31
Kitchen/Living/Dining	7.24 m x 4.66 m	23' 9" x 15' 3"
Bedroom 1	3.37 m x 3.30 m	11' 1" x 10' 9"
Bedroom 2	3.78 m x 3.37 m	12' 4" x 11' 0"
Total Internal Area	75.5 sq m	813 sq ft

PLOT: P3 04 02 3 BEDROOM APARTMENT		TYPE 32
Kitchen/Living/Dining	6.69 m x 4.77 m	21' 11" x 15' 7"
Bedroom 1	6.51 m x 2.96 m	21' 4" x 9' 8"
Bedroom 2	5.37 m x 2.80 m	17' 7" x 9' 2"
Bedroom 3	3.67 m x 3.08 m	12' 0" x 10' 1"
Total Internal Area	95.0 sq m	1,023 sq ft

PLOT: P3 04 03 3 BEDROOM APARTMENT		TYPE 33
Kitchen/Living/Dining	7.86 m x 4.76 m	25' 9" x 15' 7"
Bedroom 1	3.53 m x 2.80 m	11' 6" x 9' 2"
Bedroom 2	4.03 m x 2.76 m	13' 2" x 9' 0"
Bedroom 3	3.94 m x 2.70 m	12' 11" x 8' 10"
Total Internal Area	101.0 sq m	1,087 sq ft

1 BEDROOM
  2 BEDROOM

3 BEDROOM
  4 BEDROOM



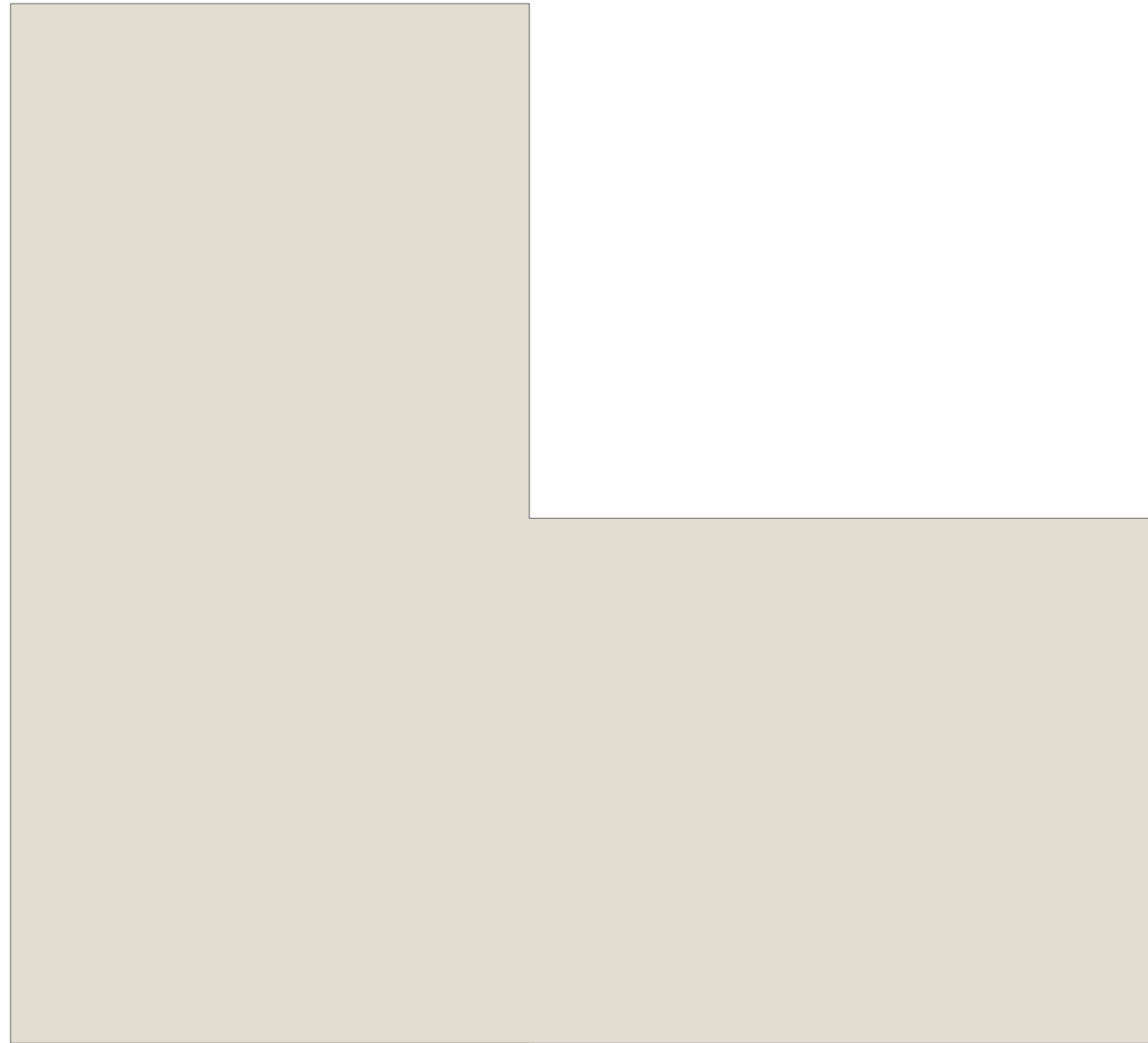
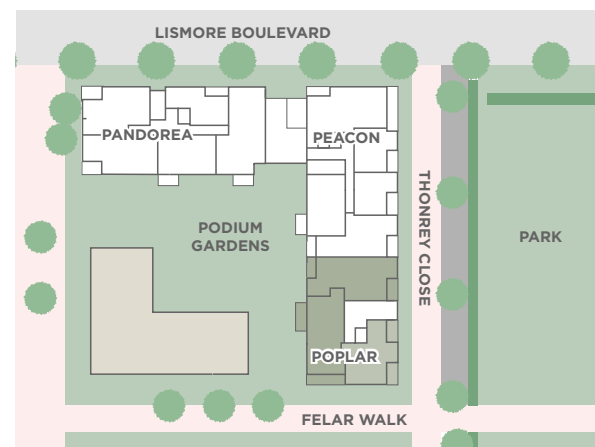
# POPLAR HOUSE FIFTH FLOOR

PLOT: P3 05 01 2 BEDROOM APARTMENT		TYPE 31
Kitchen/Living/Dining	7.24 m x 4.66 m	23' 9" x 15' 3"
Bedroom 1	3.37 m x 3.30 m	11' 1" x 10' 9"
Bedroom 2	3.78 m x 3.37 m	12' 4" x 11' 0"
Total Internal Area	75.5 sq m	813 sq ft

PLOT: P3 05 02 3 BEDROOM APARTMENT		TYPE 32
Kitchen/Living/Dining	6.69 m x 4.77 m	21' 11" x 15' 7"
Bedroom 1	6.51 m x 2.96 m	21' 4" x 9' 8"
Bedroom 2	5.37 m x 2.80 m	17' 7" x 9' 2"
Bedroom 3	3.67 m x 3.08 m	12' 0" x 10' 1"
Total Internal Area	95.0 sq m	1,023 sq ft

PLOT: P3 05 03 3 BEDROOM APARTMENT		TYPE 33
Kitchen/Living/Dining	7.86 m x 4.76 m	25' 9" x 15' 7"
Bedroom 1	3.53 m x 2.80 m	11' 6" x 9' 2"
Bedroom 2	4.03 m x 2.76 m	13' 2" x 9' 0"
Bedroom 3	3.94 m x 2.70 m	12' 11" x 8' 10"
Total Internal Area	101.0 sq m	1,087 sq ft

- 1 BEDROOM
- 2 BEDROOM
- 3 BEDROOM
- 4 BEDROOM

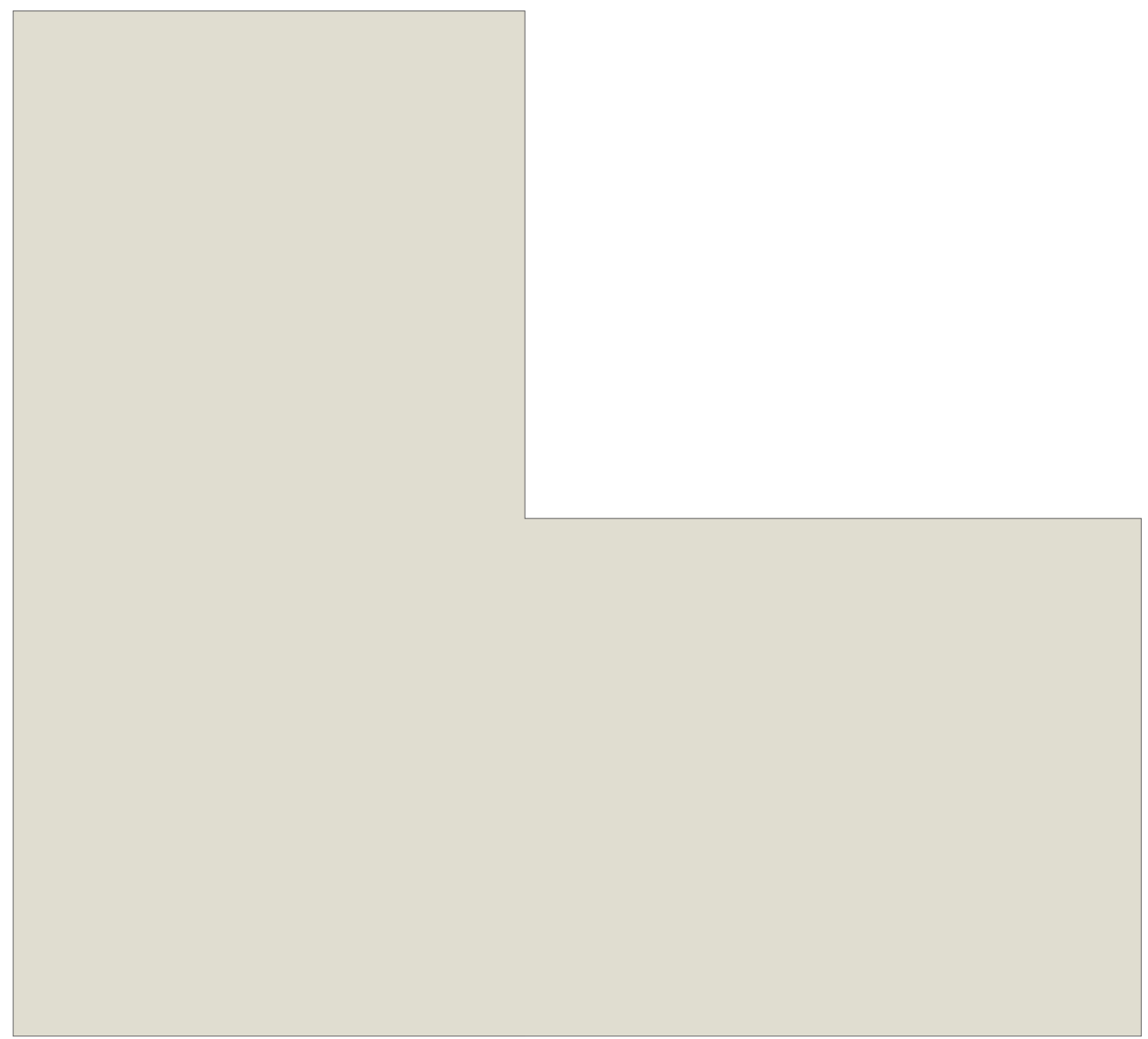
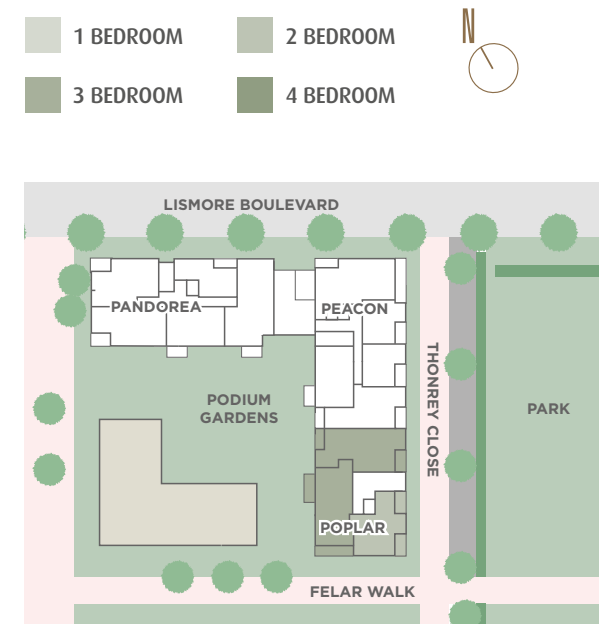


# POPLAR HOUSE SIXTH FLOOR

<b>PLOT: P3 06 01</b> 2 BEDROOM APARTMENT	TYPE 31	
Kitchen/Living/Dining	7.24 m x 4.66 m	23' 9" x 15' 3"
Bedroom 1	3.37 m x 3.30 m	11' 1" x 10' 9"
Bedroom 2	3.78 m x 3.37 m	12' 4" x 11' 0"
Total Internal Area	75.5 sq m	813 sq ft

<b>PLOT: P3 06 02</b> 3 BEDROOM APARTMENT	TYPE 32	
Kitchen/Living/Dining	6.69 m x 4.77 m	21' 11" x 15' 7"
Bedroom 1	6.51 m x 2.96 m	21' 4" x 9' 8"
Bedroom 2	5.37 m x 2.80 m	17' 7" x 9' 2"
Bedroom 3	3.67 m x 3.08 m	12' 0" x 10' 1"
Total Internal Area	95.0 sq m	1,023 sq ft

<b>PLOT: P3 06 03</b> 3 BEDROOM APARTMENT	TYPE 33	
Kitchen/Living/Dining	7.86 m x 4.76 m	25' 9" x 15' 7"
Bedroom 1	3.53 m x 2.80 m	11' 6" x 9' 2"
Bedroom 2	4.03 m x 2.76 m	13' 2" x 9' 0"
Bedroom 3	3.94 m x 2.70 m	12' 11" x 8' 10"
Total Internal Area	101.0 sq m	1,087 sq ft




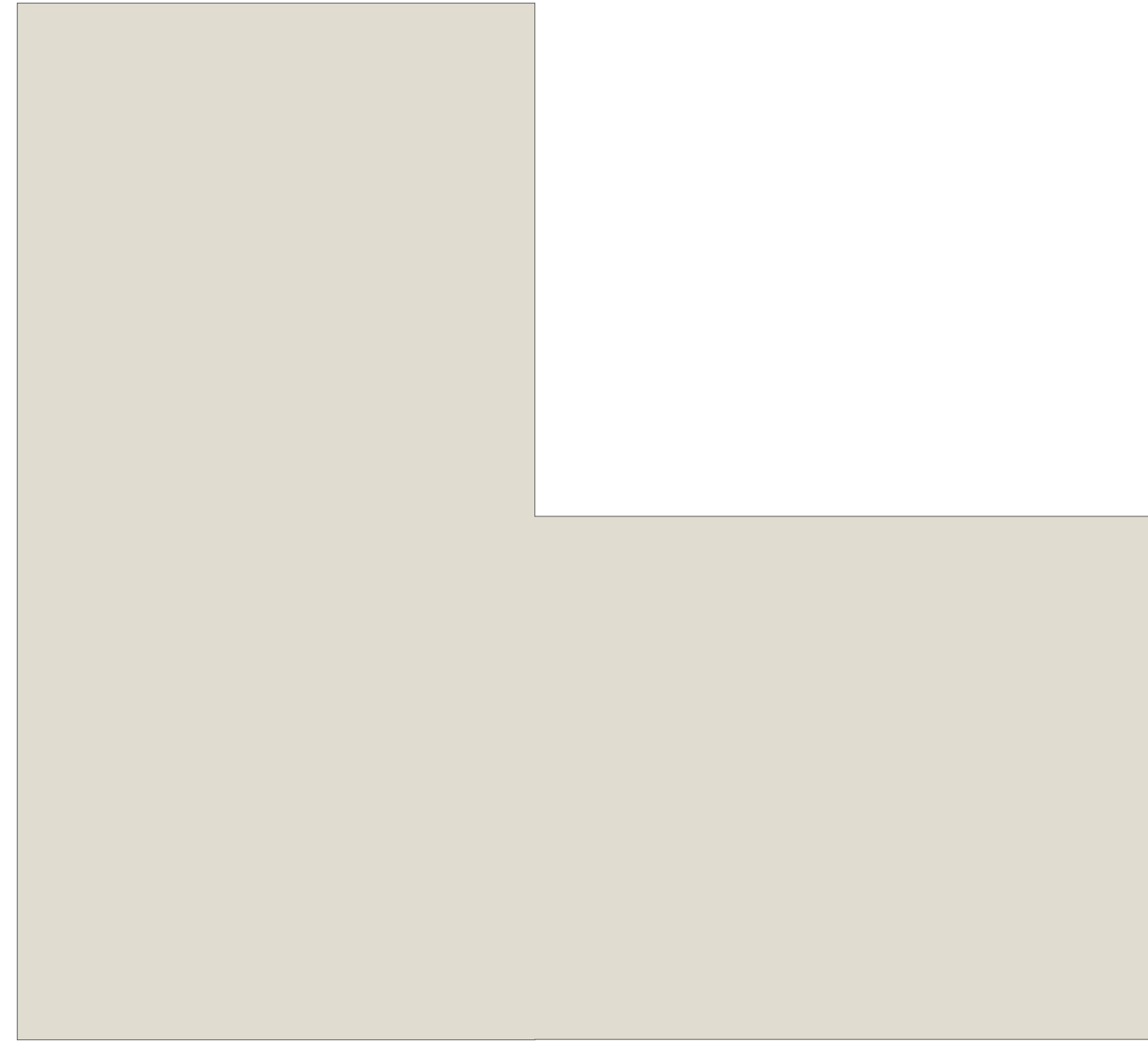
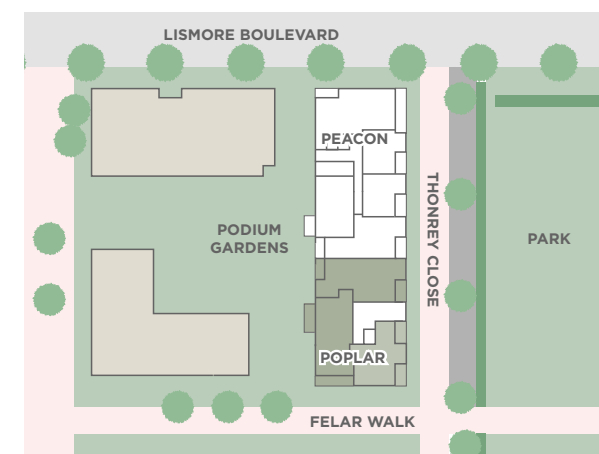
# POPLAR HOUSE SEVENTH FLOOR

PLOT: P3 07 01 2 BEDROOM APARTMENT		TYPE 31
Kitchen/Living/Dining	7.24 m x 4.66 m	23' 9" x 15' 3"
Bedroom 1	3.37 m x 3.30 m	11' 1" x 10' 9"
Bedroom 2	3.78 m x 3.37 m	12' 4" x 11' 0"
Total Internal Area	75.5 sq m	813 sq ft

PLOT: P3 07 02 3 BEDROOM APARTMENT		TYPE 32
Kitchen/Living/Dining	6.69 m x 4.77 m	21' 11" x 15' 7"
Bedroom 1	6.51 m x 2.96 m	21' 4" x 9' 8"
Bedroom 2	5.37 m x 2.80 m	17' 7" x 9' 2"
Bedroom 3	3.67 m x 3.08 m	12' 0" x 10' 1"
Total Internal Area	95.0 sq m	1,023 sq ft

PLOT: P3 07 03 3 BEDROOM APARTMENT		TYPE 33
Kitchen/Living/Dining	7.86 m x 4.76 m	25' 9" x 15' 7"
Bedroom 1	3.53 m x 2.80 m	11' 6" x 9' 2"
Bedroom 2	4.03 m x 2.76 m	13' 2" x 9' 0"
Bedroom 3	3.94 m x 2.70 m	12' 11" x 8' 10"
Total Internal Area	101.0 sq m	1,087 sq ft

1 BEDROOM
  2 BEDROOM
  3 BEDROOM
  4 BEDROOM

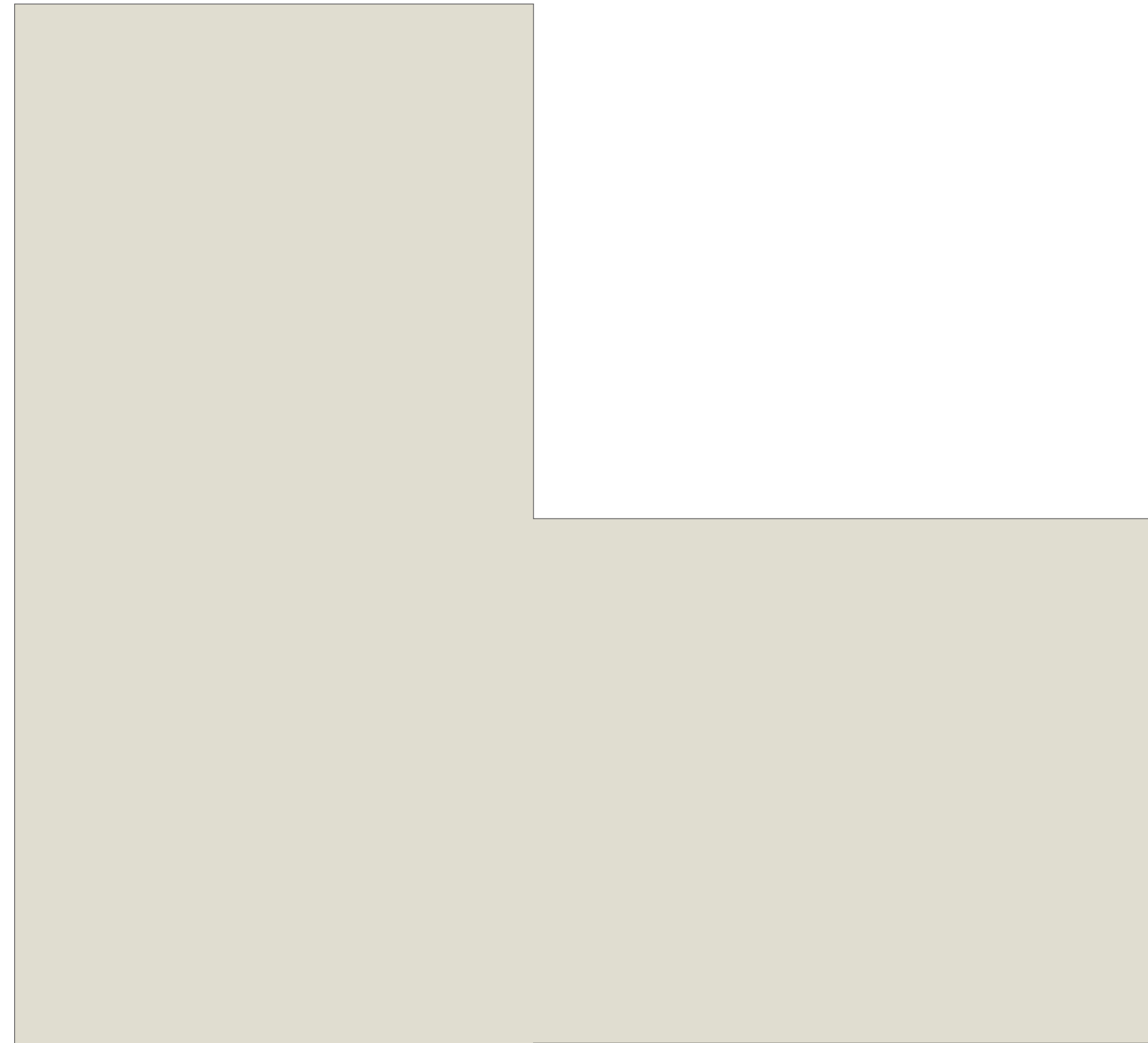
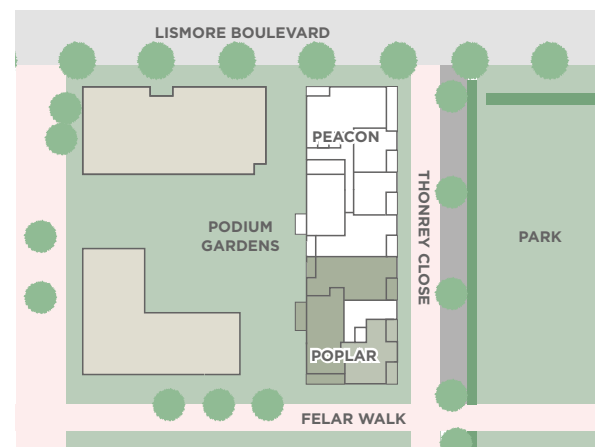
# POPLAR HOUSE EIGHTH FLOOR

PLOT: P3 08 01 2 BEDROOM APARTMENT		TYPE 31
Kitchen/Living/Dining	7.24 m x 4.66 m	23' 9" x 15' 3"
Bedroom 1	3.37 m x 3.30 m	11' 1" x 10' 9"
Bedroom 2	3.78 m x 3.37 m	12' 4" x 11' 0"
Total Internal Area	75.5 sq m	813 sq ft

PLOT: P3 08 02 3 BEDROOM APARTMENT		TYPE 32
Kitchen/Living/Dining	6.69 m x 4.77 m	21' 11" x 15' 7"
Bedroom 1	6.51 m x 2.96 m	21' 4" x 9' 8"
Bedroom 2	5.37 m x 2.80 m	17' 7" x 9' 2"
Bedroom 3	3.67 m x 3.08 m	12' 0" x 10' 1"
Total Internal Area	95.0 sq m	1,023 sq ft

PLOT: P3 08 03 3 BEDROOM APARTMENT		TYPE 33
Kitchen/Living/Dining	7.86 m x 4.76 m	25' 9" x 15' 7"
Bedroom 1	3.53 m x 2.80 m	11' 6" x 9' 2"
Bedroom 2	4.03 m x 2.76 m	13' 2" x 9' 0"
Bedroom 3	3.94 m x 2.70 m	12' 11" x 8' 10"
Total Internal Area	101.0 sq m	1,087 sq ft

- 1 BEDROOM
- 2 BEDROOM
- 3 BEDROOM
- 4 BEDROOM



## A DYNAMIC PRESENCE IN LONDON



Redrow Homes Colindale  
Redrow House  
1 Denmark Hill Drive  
London  
NW9 4BQ

+44 (0)20 8358 8340

## INNOVATIVE LIVING

Redrow is a premium residential developer focused on bespoke residential opportunities in the world's most dynamic city.

Redrow is committed to creating new communities where people aspire to live. Our award winning portfolio offers a wealth of choice for our discerning customers, combining innovative design and sought after London locations. As a business, we are focused on contributing to economic development and creating vibrant, healthy communities where we work.

We are fortunate to have a fantastic blend of fresh-thinking and well-honed experience in every department of our team; from land acquisition, to planning and design, through to build, sales and aftercare.

This means that you can be confident that a distinctive and exacting standard has been set and followed throughout all our developments. That standard is to be the best. To buy the best land, design and build the best buildings, and provide the best sales and after care experience.

## A SUSTAINABLE REDROW

Redrow has setup Redrow Aspirations 2018 action plan to ensure that year on year our business continues to improve in environmental sustainability, aiming to be one of the most sustainable and socially responsible companies in our field.

In 2016, Redrow were awarded gold in the NextGeneration benchmarking system for sustainability.



### SINCE THEN WE HAVE DELIVERED SOME OF THE FOLLOWING KEY HIGHLIGHTS:

*decreased our CO<sub>2</sub>  
emission per unit by*

**19%**

*increased our waste diverted  
from landfill to*

**93.6%**

**DOUBLED THE NUMBER OF  
HOMES BUILT TO CODE**

*for Sustainable Homes  
level 3 or above*

*installed*

**82%**

*of our homes with  
SMART meters*

## COMMUNITY AND ENVIRONMENTAL VALUES

Improving the environment and quality of life for our customers and communities is at the heart of Redrow's operations.

### ENVIRONMENT

Our Sustainability Strategy is to:

- Be more efficient in our use of resources such as energy and water
- Protect and enhance biodiversity
- Reduce the environmental impact of our homes through their design and construction, and the way residents live in them
- Work with suppliers to help them reduce their impact on the environment. This covers ethical material sourcing, transport and delivery, packaging, health and safety, workforce competency, training and welfare

In recognition of our environmental performance, we have achieved an independently assessed, British Standard 8555 Level 2, which focuses on environmental management systems.

- At Colindale Gardens **100%** of the heating supply for all the buildings will come from the on-site District Heat Network
- All residents will have access to our Car Club, and sustainable travel incentives are available as part of our Travel Plan
- Across all Redrow sites, **99.8%** of timber used was responsibly sourced in 2015 and the amount of waste we diverted from landfill has increased to **94.8%**

### COMMUNITY

Colindale Gardens is a vibrant new community within an attractive green setting. Throughout its build programme, Redrow is committed to supporting local labour and training. We are providing opportunities for:

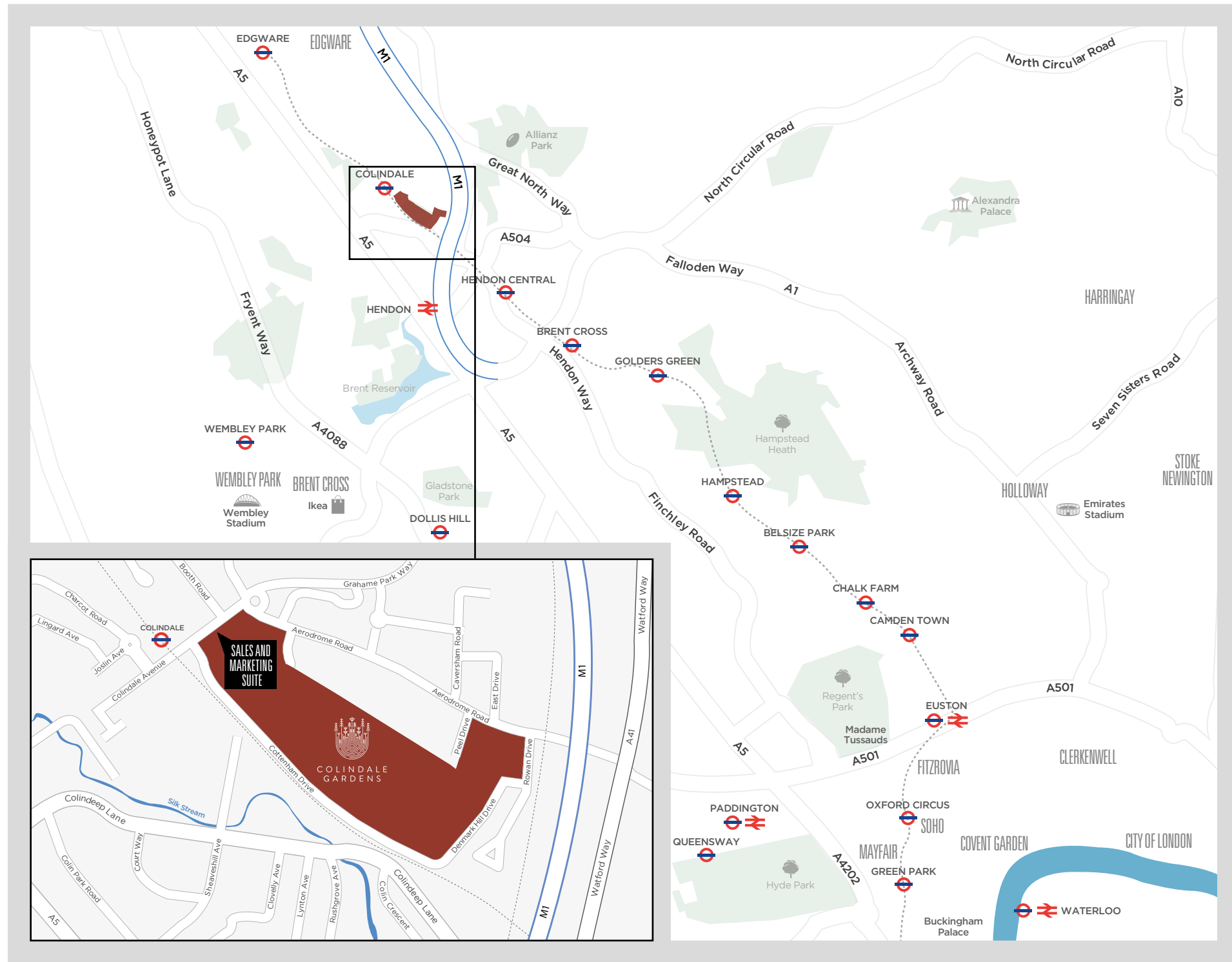
- Over 90 apprentices
- 110 work experience placements
- 1000 site visits
- 500 workshops for local students

Redrow is the first Founding Patron of the nearby OnSide Youth Zone, at Montrose Playing Fields to the north of Colindale station. This £6 million state-of-the-art youth centre will give young people a quality, safe and affordable place to go in their leisure time.



## RECENT AWARDS





## SALES AND MARKETING SUITE

Colindale Gardens  
 Colindale Avenue  
 London  
 NW9 5HU

**Contact us**  
 020 3538 2793  
[www.colindalegardens.com](http://www.colindalegardens.com)  
[sales@colindalegardens.com](mailto:sales@colindalegardens.com)

The information contained in this document is provided for general guidelines only and does not form the whole or any part of any offer, contract or warranty. These particulars should not be relied upon as accurately describing any of the specific matters described by any order under the Consumer Protection from Unfair Trading Regulations 2008. Customers are strongly advised to contact a Redrow Homes Limited representative for further details and to satisfy themselves as to their accuracy. Your attention is drawn to the fact that it may not be possible to obtain all products as referred to in the specification. In such cases, a similar alternative will be provided. Redrow Homes Limited reserve the right to make these changes as required. All information and computer representations contained in this document are taken from design intent material and may be subject to further design development. The dimensions given in the brochure are approximate. They are not intended to be used for carpet sizes, appliance sizes or items of furniture. Images are representative only. Maps are not to scale and show approximate locations only. Kitchen layouts are indicative only and subject to optimisation by Redrow Homes Limited. Colindale Gardens is a marketing name and will not necessarily form part of the approved postal address. Printed December 2016.

[WWW.COLINDALEGARDENS.COM](http://WWW.COLINDALEGARDENS.COM)

