

THAMES WALK

APARTMENTS

PONTOON | REACH

ROYAL DOCKS

LONDON E16



APARTMENTS



REACH

LONDON E16

Computer generated image, indicative only.

 **REDROW**
A BETTER WAY TO LIVE

STUNNING APARTMENTS WITHIN REACH

INTRODUCING THAMES WALK, THE FIRST PHASE TO BE RELEASED AT PONTOON REACH, REDROW'S PREMIUM NEW DEVELOPMENT IN THE ROYAL DOCKS.

Thames Walk sets the standard for Pontoon Reach, with an exciting selection of studios, 1, 2 and 3 bedroom apartments in an elegant 13 storey building, surrounded by new landscaped public space and cycle paths.

All the apartments have a private balcony or terrace, and residents can also enjoy outdoor life in the development's private courtyard.

EVERY DESIRABLE FEATURE

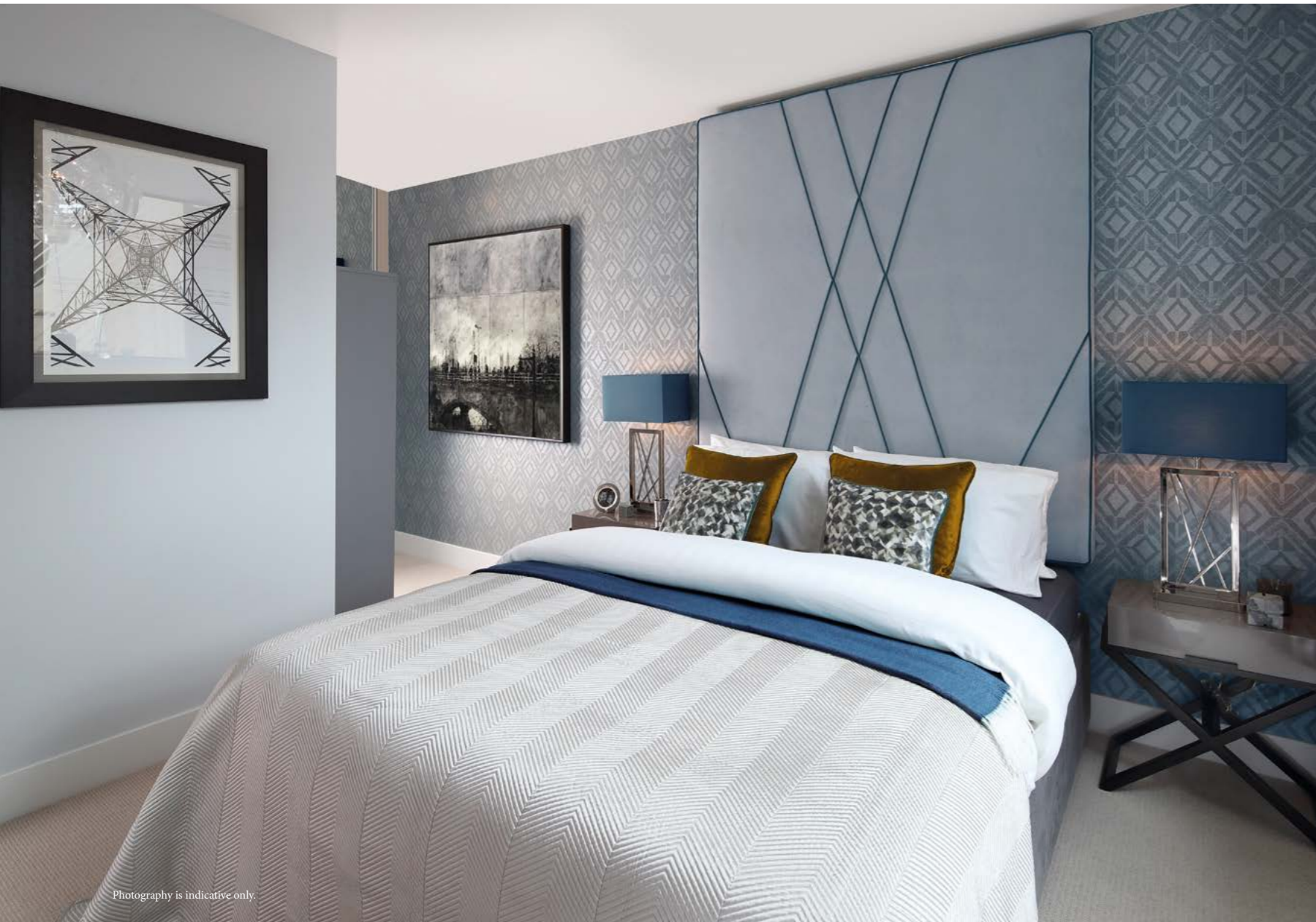
THE THAMES WALK APARTMENTS ARE IMPRESSIVE, BRINGING THE BEST OF CONTEMPORARY DESIGN TO WELL PLANNED INTERIOR SPACE.

The open plan kitchen features a range of streamlined, soft-close cabinets with composite stone worktops lending a luxurious yet practical touch. All appliances are included, of course.

Antico Spacia flooring throughout the living/dining area, kitchen and hall creates an elegant and unified look, while the bedrooms have comforting carpet. Underfloor heating warms every room in luxurious yet unobtrusive fashion.

Bathrooms and en-suites are beautifully fitted and finished, bringing together wall hung white designer sanitaryware, Porcelanosa wall and floor tiles and mirrored wall units.

All of this beauty is more than skin deep: the apartments are covered by a 10 year LABC warranty, and are built to very high standards of sustainable design.



SPECIFICATION

KITCHEN

- Interior designed fitted kitchens
- Gloss cabinet doors with soft close, handle-less design and feature lighting
- Slim line laminate worktop
- Full height splashback behind hob
- Stainless steel sink with satin chrome mixer tap
- Single oven
- Four zone ceramic hob with integrated telescopic hood
- Integrated dishwasher*
- 50/50 fridge freezer
- Free standing washer-dryer located in hallway cupboard
- Cutlery drawer inserts

BATHROOM / EN SUITE

- Ceramic wall and floor tiles
- Bespoke designed vanity unit – wall mounted cupboard with mirrored door
- Semi inset washbasin
- WC with concealed cistern and polished chrome dual flush button
- White bath with timber effect bath panel
- White shower tray with shower door (to all en suites)
- Shaver socket concealed in cabinet
- Polished chrome electric heated towel rail

ELECTRICS

- Satin chrome switches to kitchen/living/dining area
- High level satin chrome sockets to kitchen
- LED downlights to hallway, kitchen/living/dining area and bathrooms
- Pendant lighting to all bedrooms
- Wiring for digital TV and wiring only for Sky Q to living area and bedroom 1
- Colour video door entry system
- Fob entry system to apartment block

JOINERY

- Oak veneer apartment entrance and internal doors
- White skirtings and architraves

WALL AND FLOOR FINISHES

- White emulsion painted internal walls and ceilings
- Amtico Spacia flooring to hallway, kitchen/living/dining area
- Carpet to all bedrooms

HEATING

- Underfloor heating throughout

COMMUNAL AREAS

- Landscaped gardens
- Lift to all floors
- Concierge service†

GENERAL

- 2 year Redrow Warranty
- 10 year LABC building warranty
- Parking available at additional cost***
- Balcony or terrace area to all apartments with decking or paving
- Recycling bin

OPTIONAL EXTRAS‡

- Silestone worktops
- Built-in wardrobe in bedroom 1

* Dishwashers vary in size

*** Please ask a sales consultant for further info on parking

† Concierge service will be in a central location within the development

‡ Optional extras available at an additional cost. Wardrobe sizes may vary, additional wardrobes available on selected plots only

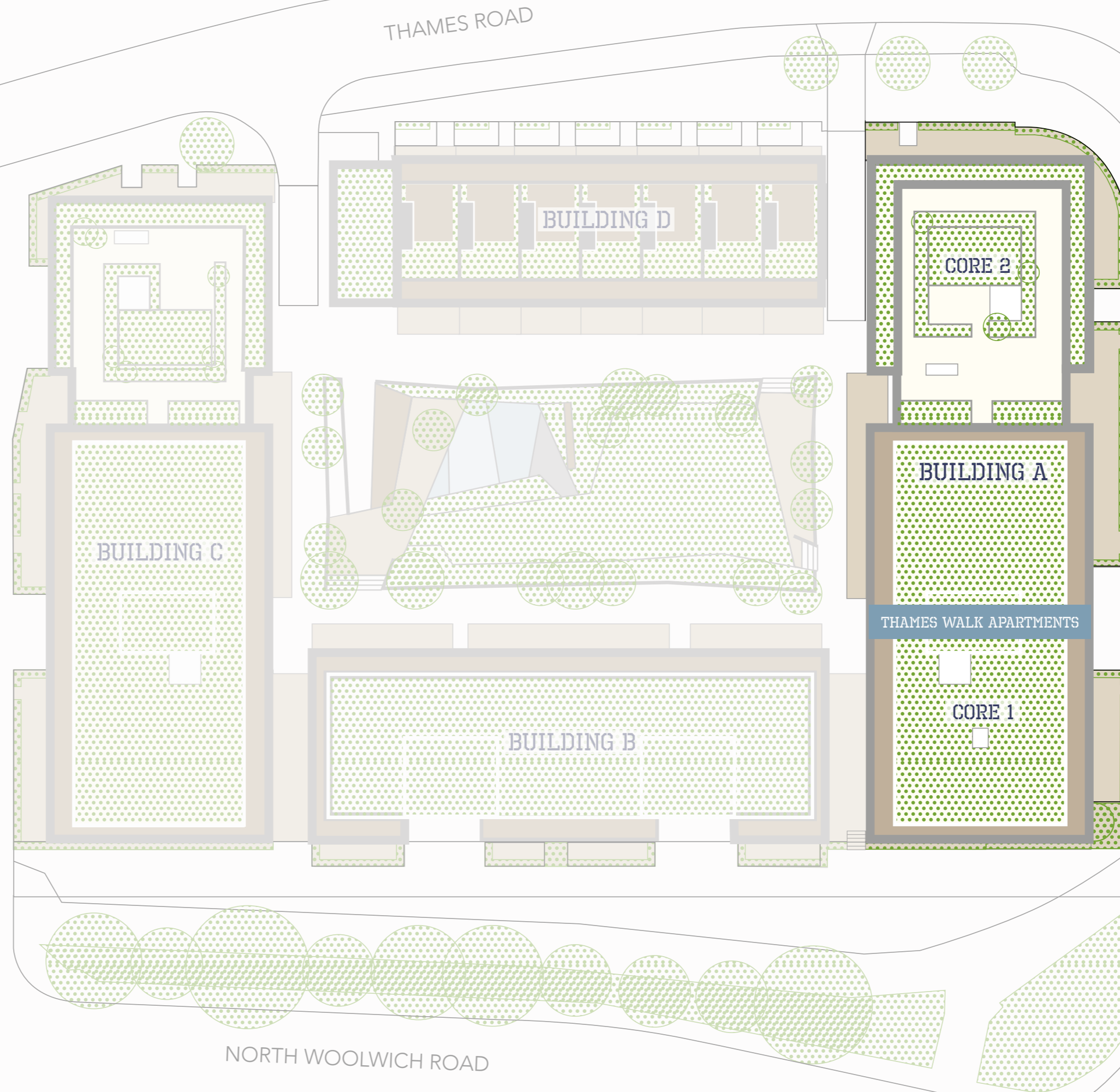
Your attention is drawn to the fact it may not be possible to obtain the products as referred to in the specification. In such cases, a similar alternative will be provided. Redrow reserve the right to make these changes. Please ask a sales consultant for further information



SITE PLAN

THAMES WALK AT PONTOON REACH

The Thames Walk Apartments are the first phase of Pontoon Reach, setting the standard for what else is to come. The buildings enclose a private courtyard to provide green space for residents to use, while the perimeters of the development are also landscaped and include proposals for new trees and a cycle path.



Site plan not to scale, indicative only.

THAMES WALK APARTMENTS

CORE 1

GND FLOOR

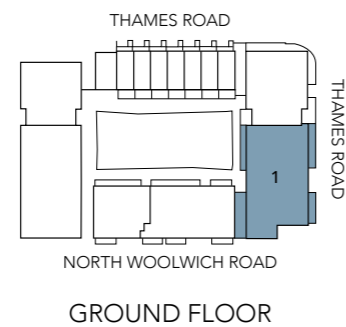
APARTMENT 1-GF-1		3 Bedroom	
Kitchen/Living/Dining	5.3m x 4.8m	17'5" x 15'9"	
Bedroom 1	5.2m x 3.2m	17'0" x 10'5"	
Bedroom 2	3.6m x 2.9m	11'9" x 9'6"	
Bedroom 3	2.8m x 2.3m	9'3" x 7'6"	
Total Floor Area	88 sq m	947 sq ft	

APARTMENT 1-GF-3		3 Bedroom	
Kitchen/Living/Dining	6.4m x 6.3m	21'0" x 20'8"	
Bedroom 1	3.8m x 3.8m	12'5" x 12'5"	
Bedroom 2	4.2m x 2.9m	13'9" x 9'6"	
Bedroom 3	4.2m x 2.9m	13'9" x 9'6"	
Total Floor Area	81 sq m	874 sq ft	

APARTMENT 1-GF-2		3 Bedroom	
Kitchen/Living/Dining	8.3m x 3.8m	27'3" x 12'5"	
Bedroom 1	5.8m x 2.9m	18'9" x 9'6"	
Bedroom 2	4.0m x 3.5m	13'2" x 11'6"	
Bedroom 3	4.3m x 2.2m	14'0" x 7'3"	
Total Floor Area	100 sq m	1076 sq ft	

APARTMENT 1-GF-4		3 Bedroom	
Kitchen/Living/Dining	9.4m x 4.7m	30'9" x 15'5"	
Bedroom 1	4.8m x 2.7m	15'9" x 8'10"	
Bedroom 2	3.6m x 3.2m	11'10" x 10'5"	
Bedroom 3	3.6m x 2.7m	11'10" x 8'10"	
Total Floor Area	100 sq m	1076 sq ft	

All areas and dimensions have been taken from architect plans prior to construction, therefore whilst the information is believed to be correct its accuracy cannot be guaranteed and does not form part of any contract. They are not intended to be used for carpet sizes or items of furniture. Purchasers must therefore rely on their own inspection to verify any information provided. All dimensions are within + or - 50mm.



- Studio Apartments
 - 1 Bedroom Apartments
 - 2 Bedroom Apartments
 - 3 Bedroom Apartments
- KEY
- ◄► Measurement points
 - SS Services and Storage



1ST FLOOR

APARTMENT 1-1-1		3 Bedroom	
Kitchen/Living/Dining	6.1m x 4.6m	19'9" x 14'9"	
Bedroom 1	3.4m x 3.3m	11'1" x 10'7"	
Bedroom 2	4.2m x 3.3m	13'6" x 11'0"	
Bedroom 3	3.8m x 2.9m	12'4" x 9'6"	
Total Floor Area	96 sq m	1033 sq ft	

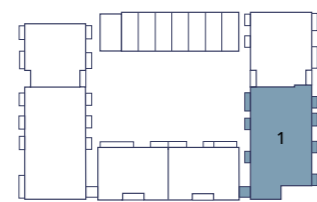
APARTMENT 1-1-2		3 Bedroom	
Kitchen/Living/Dining	5.3m x 4.7m	17'4" x 15'5"	
Bedroom 1	3.0m x 2.8m	9'10" x 9'2"	
Bedroom 2	4.4m x 2.9m	14'5" x 9'4"	
Bedroom 3	4.3m x 2.5m	14'1" x 8'2"	
Total Floor Area	87 sq m	937 sq ft	

APARTMENT 1-1-3		3 Bedroom	
Kitchen/Living/Dining	7.7m x 4.1m	25'2" x 13'5"	
Bedroom 1	5.6m x 2.8m	18'3" x 9'0"	
Bedroom 2	3.6m x 3.0m	11'7" x 9'8"	
Bedroom 3	3.0m x 2.5m	9'8" x 8'3"	
Total Floor Area	86 sq m	926 sq ft	

APARTMENT 1-1-4		3 Bedroom	
Kitchen/Living/Dining	9.6m x 3.4m	31'4" x 11'2"	
Bedroom 1	5.4m x 2.8m	17'6" x 9'0"	
Bedroom 2	4.0m x 3.6m	13'1" x 11'6"	
Bedroom 3	3.9m x 2.2m	12'8" x 7'1"	
Total Floor Area	101 sq m	1087 sq ft	

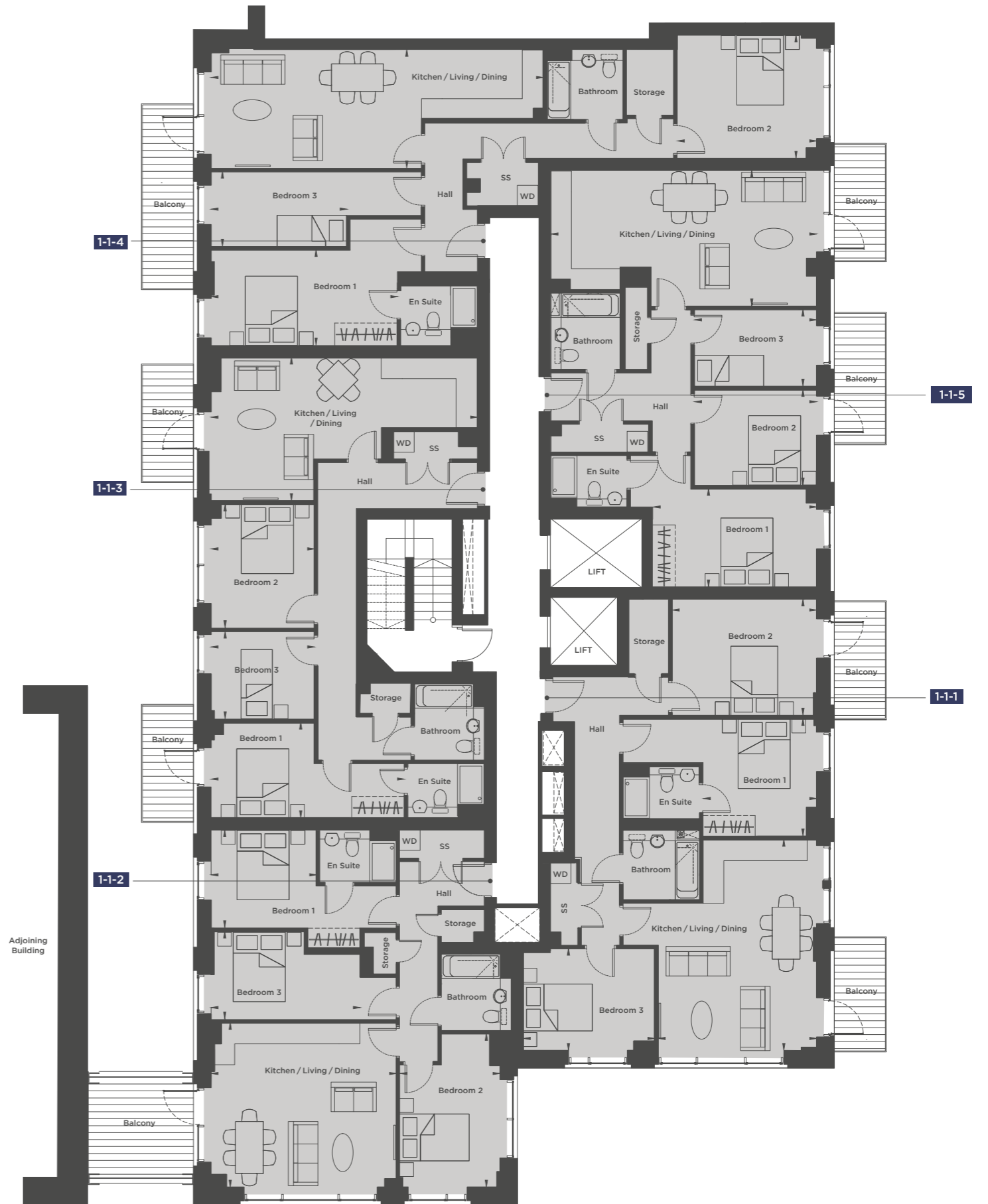
APARTMENT 1-1-5		3 Bedroom	
Kitchen/Living/Dining	7.6m x 3.9m	25'1" x 12'8"	
Bedroom 1	4.7m x 2.8m	15'4" x 9'2"	
Bedroom 2	3.5m x 2.7m	11'5" x 8'10"	
Bedroom 3	3.5m x 2.2m	11'5" x 7'2"	
Total Floor Area	86 sq m	926 sq ft	

All areas and dimensions have been taken from architect plans prior to construction, therefore whilst the information is believed to be correct its accuracy cannot be guaranteed and does not form part of any contract. They are not intended to be used for carpet sizes or items of furniture. Purchasers must therefore rely on their own inspection to verify any information provided. All dimensions are within + or - 50mm.



1ST FLOOR

- Studio Apartments
 - 1 Bedroom Apartments
 - 2 Bedroom Apartments
 - 3 Bedroom Apartments
- KEY
- ◀▶ Measurement points
 - SS Services and Storage



2ND FLOOR 4TH FLOOR 6TH FLOOR

APARTMENTS 1-2-1, 1-4-1, 1-6-1			1 Bedroom
Kitchen/Living/Dining	5.9m x 4.7m	19'4" x 15'5"	
Bedroom	4.7m x 2.8m	15'5" x 9'2"	
Total Floor Area	53 sq m	570 sq ft	

APARTMENTS 1-2-2, 1-4-2, 1-6-2			1 Bedroom
Kitchen/Living/Dining	8.4m x 3.0m	27'7" x 9'11"	
Bedroom	3.7m x 3.2m	12'2" x 10'5"	
Total Floor Area	51 sq m	549 sq ft	

APARTMENTS 1-2-3, 1-4-3, 1-6-3			3 Bedroom
Kitchen/Living/Dining	5.3m x 4.7m	17'5" x 15'5"	
Bedroom 1	3.0m x 2.8m	9'11" x 9'2"	
Bedroom 2	4.4m x 2.9m	14'5" x 9'4"	
Bedroom 3	4.3m x 2.5m	14'1" x 8'2"	
Total Floor Area	86 sq m	926 sq ft	

APARTMENTS 1-2-4, 1-4-4, 1-6-4			Studio
Kitchen/Living/Dining	5.8m x 2.9m	18'9" x 9'5"	
Bedroom	4.2m x 2.7m	13'7" x 9'0"	
Total Floor Area	39 sq m	420 sq ft	

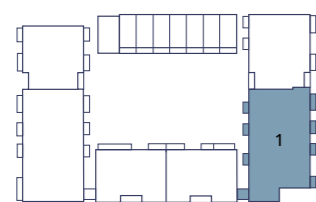
APARTMENTS 1-2-5, 1-4-5, 1-6-5			Studio
Kitchen/Living/Dining	5.4m x 3.9m	17'6" x 12'8"	
Bedroom	4.2m x 2.7m	13'7" x 8'10"	
Total Floor Area	43 sq m	463 sq ft	

APARTMENTS 1-2-6, 1-4-6, 1-6-6			Studio
Kitchen/Living/Dining	6.1m x 2.5m	19'9" x 8'2"	
Bedroom	4.1m x 2.5m	13'3" x 8'2"	
Total Floor Area	40 sq m	431 sq ft	

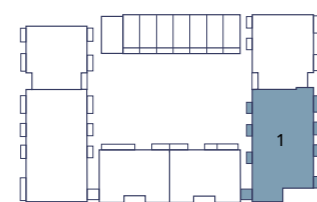
APARTMENTS 1-2-7, 1-4-7, 1-6-7			2 Bedroom
Kitchen/Living/Dining	8.9m x 3.5m	29'2" x 11'5"	
Bedroom 1	5.7m x 3.5m	18'6" x 11'4"	
Bedroom 2	4.1m x 2.8m	13'4" x 9'1"	
Total Floor Area	90 sq m	969 sq ft	

APARTMENTS 1-2-8, 1-4-8, 1-6-8			1 Bedroom
Kitchen/Living/Dining	7.6m x 3.6m	25'1" x 11'8"	
Bedroom	5.3m x 2.8m	17'5" x 9'0"	
Total Floor Area	50 sq m	538 sq ft	

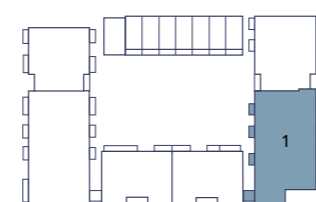
All areas and dimensions have been taken from architect plans prior to construction, therefore whilst the information is believed to be correct its accuracy cannot be guaranteed and does not form part of any contract. They are not intended to be used for carpet sizes or items of furniture. Purchasers must therefore rely on their own inspection to verify any information provided. All dimensions are within + or - 50mm.



2ND FLOOR

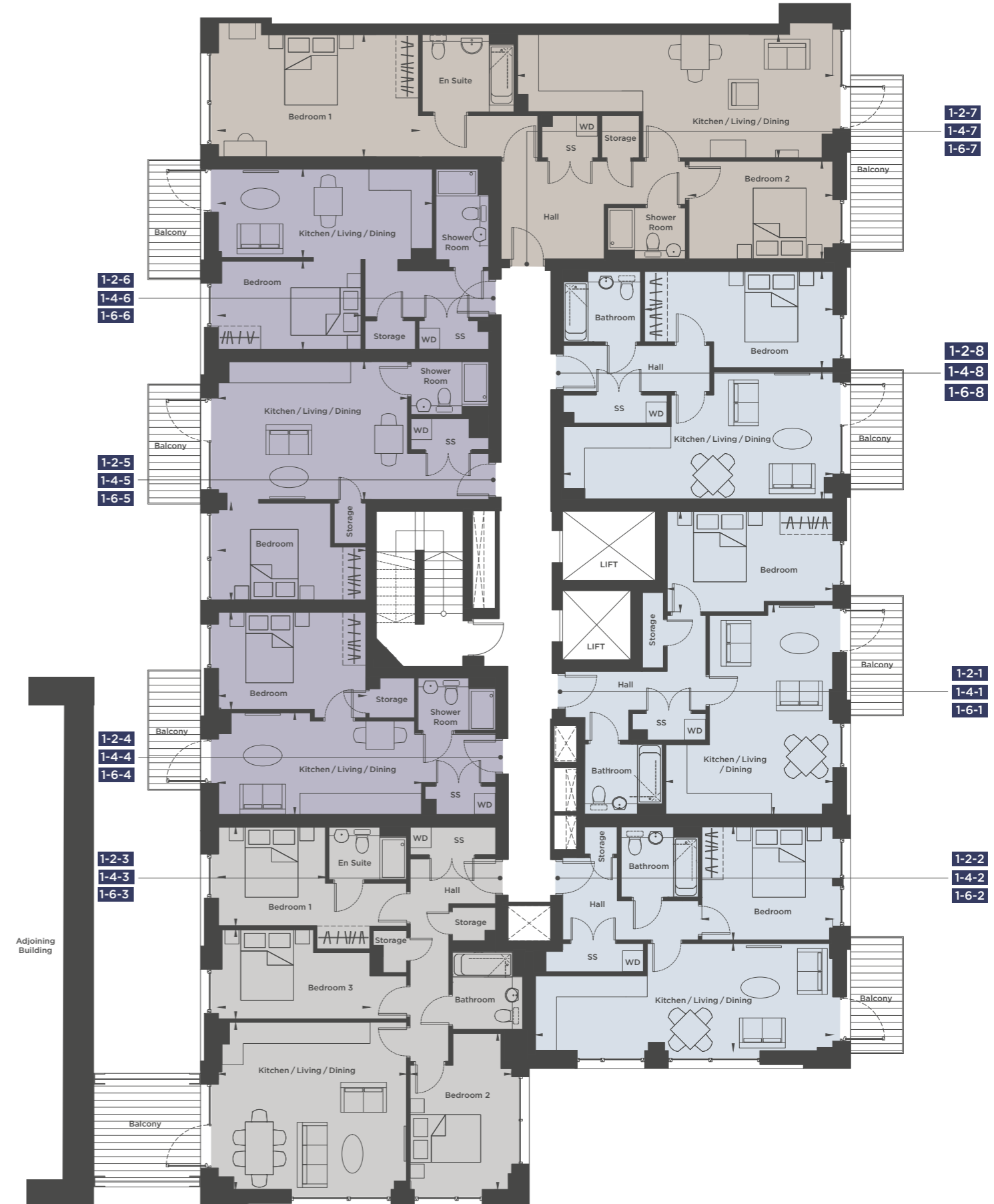


4TH FLOOR



6TH FLOOR

- Studio Apartments
 - 1 Bedroom Apartments
 - 2 Bedroom Apartments
 - 3 Bedroom Apartments
- KEY
- ▶▶ Measurement points
 - SS Services and Storage



3RD FLOOR

5TH FLOOR

APARTMENTS 1-3-1, 1-5-1		1 Bedroom
Kitchen/Living/Dining	5.9m x 4.7m	19'4" x 15'5"
Bedroom	4.7m x 2.8m	15'5" x 9'2"
Total Floor Area	53 sq m	570 sq ft

APARTMENTS 1-3-2, 1-5-2		1 Bedroom
Kitchen/Living/Dining	8.4m x 3.0m	27'7" x 9'10"
Bedroom	3.7m x 3.2m	12'2" x 10'5"
Total Floor Area	51 sq m	549 sq ft

APARTMENTS 1-3-3, 1-5-3		3 Bedroom
Kitchen/Living/Dining	5.3m x 4.7m	17'5" x 15'5"
Bedroom 1	3.0m x 2.8m	9'10" x 9'2"
Bedroom 2	4.4m x 2.9m	14'5" x 9'4"
Bedroom 3	4.3m x 2.5m	14'1" x 8'2"
Total Floor Area	86 sq m	926 sq ft

APARTMENTS 1-3-4, 1-5-4		Studio
Kitchen/Living/Dining	5.8m x 2.9m	18'9" x 9'5"
Bedroom	4.2m x 2.7m	13'7" x 8'10"
Total Floor Area	39 sq m	420 sq ft

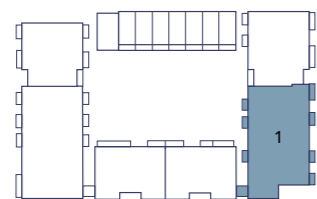
APARTMENTS 1-3-5, 1-5-5		Studio
Kitchen/Living/Dining	5.4m x 3.9m	17'6" x 12'8"
Bedroom	4.2m x 2.7m	13'7" x 8'10"
Total Floor Area	43 sq m	463 sq ft

APARTMENTS 1-3-6, 1-5-6		Studio
Kitchen/Living/Dining	6.1m x 2.5m	19'9" x 8'2"
Bedroom	4.1m x 2.5m	13'3" x 8'2"
Total Floor Area	40 sq m	431 sq ft

APARTMENTS 1-3-7, 1-5-7		2 Bedroom
Kitchen/Living/Dining	8.9m x 3.5m	29'2" x 11'5"
Bedroom 1	5.7m x 3.5m	18'6" x 11'4"
Bedroom 2	4.1m x 2.8m	13'4" x 9'1"
Total Floor Area	90 sq m	969 sq ft

APARTMENTS 1-3-8, 1-5-8		1 Bedroom
Kitchen/Living/Dining	7.6m x 3.6m	24'11" x 11'8"
Bedroom	5.3m x 2.8m	17'5" x 9'0"
Total Floor Area	50 sq m	538 sq ft

All areas and dimensions have been taken from architect plans prior to construction, therefore whilst the information is believed to be correct its accuracy cannot be guaranteed and does not form part of any contract. They are not intended to be used for carpet sizes or items of furniture. Purchasers must therefore rely on their own inspection to verify any information provided. All dimensions are within + or - 50mm.

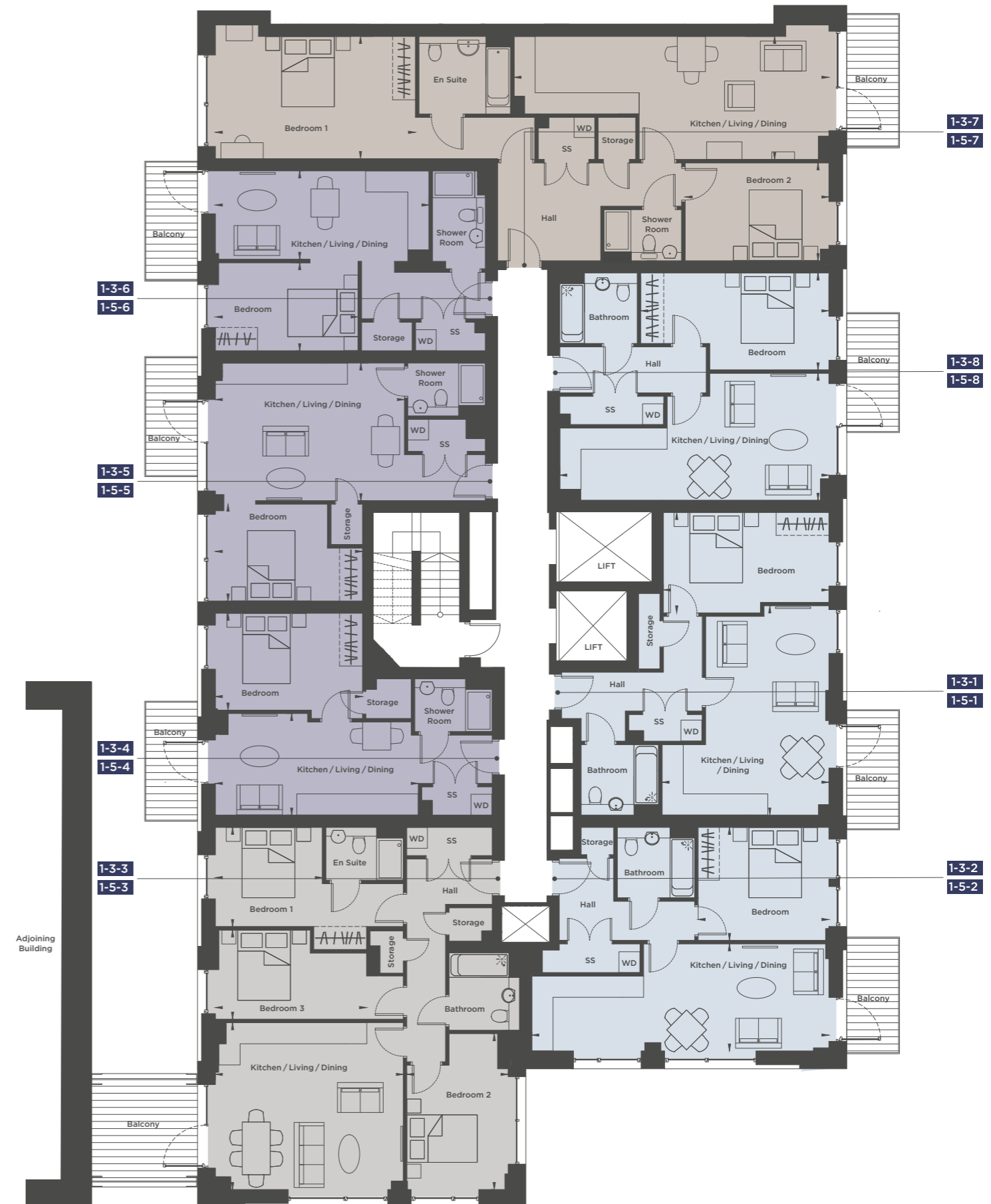


3RD FLOOR



5TH FLOOR

- Studio Apartments
 - 1 Bedroom Apartments
 - 2 Bedroom Apartments
 - 3 Bedroom Apartments
- KEY
- ▶▶ Measurement points
 - SS Services and Storage



7TH FLOOR

APARTMENT 1-7-1		1 Bedroom	
Kitchen/Living/Dining	5.9m x 4.7m	19'4" x 15'5"	
Bedroom	4.7m x 2.8m	15'5" x 9'2"	
Total Floor Area	53 sq m	570 sq ft	

APARTMENT 1-7-2		1 Bedroom	
Kitchen/Living/Dining	8.4m x 3.0m	27'7" x 9'10"	
Bedroom	3.7m x 3.2m	12'2" x 10'5"	
Total Floor Area	51 sq m	549 sq ft	

APARTMENT 1-7-3		3 Bedroom	
Kitchen/Living/Dining	5.3m x 4.7m	17'5" x 15'5"	
Bedroom 1	3.0m x 2.8m	9'10" x 9'2"	
Bedroom 2	4.4m x 2.9m	14'5" x 9'4"	
Bedroom 3	4.3m x 2.5m	14'1" x 8'2"	
Total Floor Area	86 sq m	926 sq ft	

APARTMENT 1-7-4		Studio	
Kitchen/Living/Dining	5.8m x 2.9m	18'9" x 9'5"	
Bedroom	4.2m x 2.7m	13'7" x 8'10"	
Total Floor Area	39 sq m	420 sq ft	

APARTMENT 1-7-5		Studio	
Kitchen/Living/Dining	5.4m x 3.9m	17'6" x 12'8"	
Bedroom	4.2m x 2.7m	13'7" x 8'10"	
Total Floor Area	43 sq m	463 sq ft	

APARTMENT 1-7-6		Studio	
Kitchen/Living/Dining	6.1m x 2.5m	19'9" x 8'2"	
Bedroom	4.1m x 2.5m	13'3" x 8'2"	
Total Floor Area	40 sq m	431 sq ft	

APARTMENT 1-7-7		2 Bedroom	
Kitchen/Living/Dining	8.9m x 3.5m	29'2" x 11'5"	
Bedroom 1	5.7m x 3.5m	18'6" x 11'5"	
Bedroom 2	4.1m x 2.8m	13'4" x 9'1"	
Total Floor Area	90 sq m	969 sq ft	

APARTMENT 1-7-8		1 Bedroom	
Kitchen/Living/Dining	7.6m x 3.6m	24'11" x 11'8"	
Bedroom	5.3m x 2.8m	17'5" x 9'0"	
Total Floor Area	50 sq m	538 sq ft	

All areas and dimensions have been taken from architect plans prior to construction, therefore whilst the information is believed to be correct its accuracy cannot be guaranteed and does not form part of any contract. They are not intended to be used for carpet sizes or items of furniture. Purchasers must therefore rely on their own inspection to verify any information provided. All dimensions are within + or - 50mm.

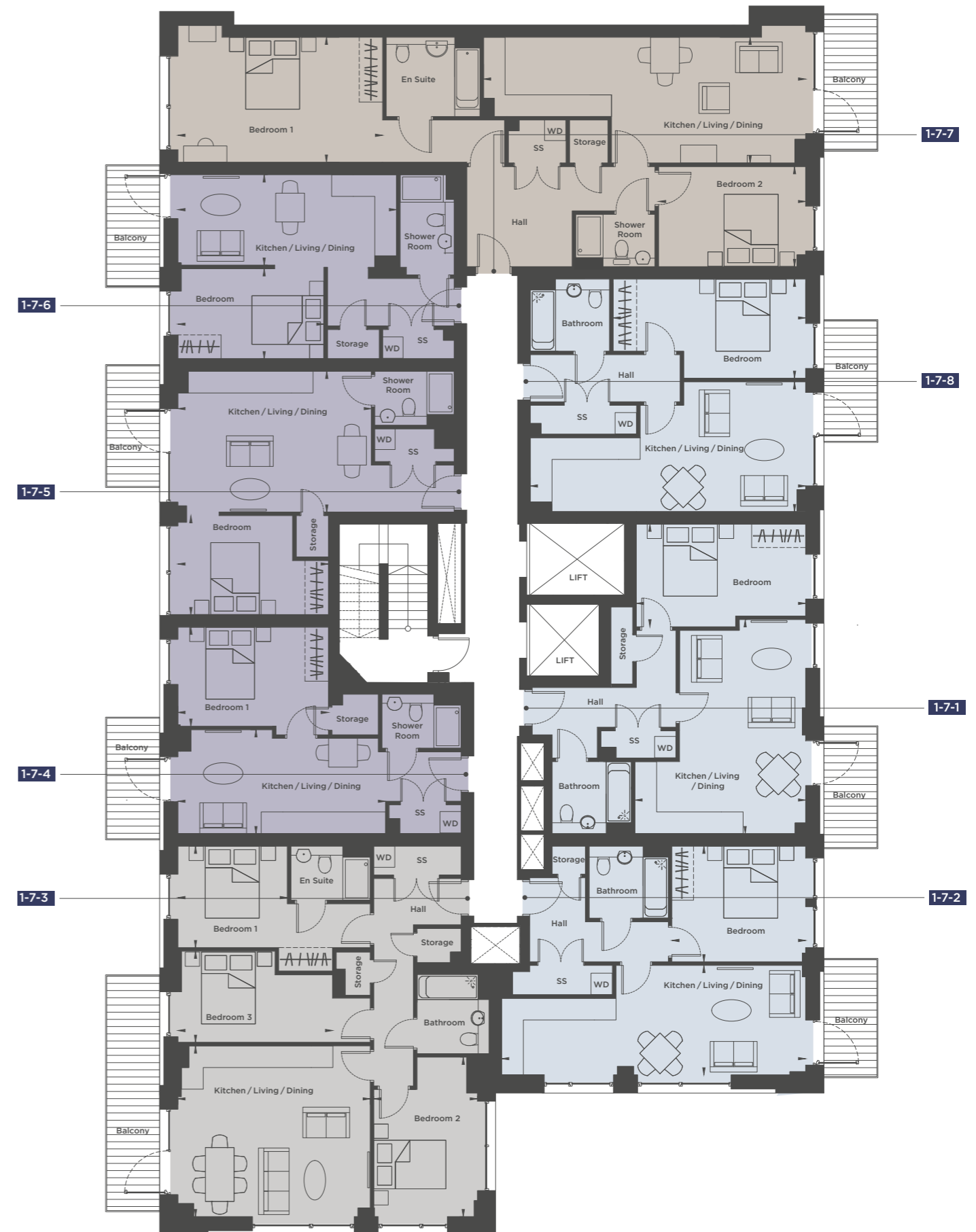


7TH FLOOR

- Studio Apartments
- 1 Bedroom Apartments
- 2 Bedroom Apartments
- 3 Bedroom Apartments

KEY

- ◀▶ Measurement points
- SS Services and Storage



8TH FLOOR

APARTMENT 1-8-1		1 Bedroom	
Kitchen/Living/Dining	5.9m x 4.7m	19'4" x 15'5"	
Bedroom	4.7m x 2.8m	15'4" x 9'2"	
Total Floor Area	53 sq m	570 sq ft	

APARTMENT 1-8-2		1 Bedroom	
Kitchen/Living/Dining	8.4m x 3.0m	27'7" x 9'10"	
Bedroom	3.7m x 3.2m	12'2" x 10'5"	
Total Floor Area	51 sq m	549 sq ft	

APARTMENT 1-8-3		3 Bedroom	
Kitchen/Living/Dining	5.3m x 4.7m	17'5" x 15'5"	
Bedroom 1	3.0m x 2.8m	9'10" x 9'2"	
Bedroom 2	4.4m x 2.9m	14'5" x 9'4"	
Bedroom 3	4.3m x 2.5m	14'1" x 8'2"	
Total Floor Area	86 sq m	926 sq ft	

APARTMENT 1-8-4		Studio	
Kitchen/Living/Dining	5.8m x 2.9m	18'9" x 9'5"	
Bedroom	4.2m x 2.7m	13'7" x 8'10"	
Total Floor Area	39 sq m	420 sq ft	

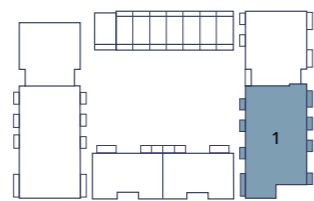
APARTMENT 1-8-5		Studio	
Kitchen/Living/Dining	5.4m x 3.9m	17'6" x 12'8"	
Bedroom	4.2m x 2.7m	13'7" x 8'10"	
Total Floor Area	43 sq m	463 sq ft	

APARTMENT 1-8-6		Studio	
Kitchen/Living/Dining	6.1m x 2.5m	19'9" x 8'2"	
Bedroom	4.1m x 2.5m	13'3" x 8'2"	
Total Floor Area	40 sq m	431 sq ft	

APARTMENT 1-8-7		2 Bedroom	
Kitchen/Living/Dining	8.9m x 3.5m	29'2" x 11'5"	
Bedroom 1	5.7m x 3.5m	18'6" x 11'4"	
Bedroom 2	4.1m x 2.8m	13'4" x 9'1"	
Total Floor Area	90 sq m	969 sq ft	

APARTMENT 1-8-8		1 Bedroom	
Kitchen/Living/Dining	7.6m x 3.6m	24'11" x 11'8"	
Bedroom	5.3m x 2.8m	17'5" x 9'0"	
Total Floor Area	50 sq m	538 sq ft	

All areas and dimensions have been taken from architect plans prior to construction, therefore whilst the information is believed to be correct its accuracy cannot be guaranteed and does not form part of any contract. They are not intended to be used for carpet sizes or items of furniture. Purchasers must therefore rely on their own inspection to verify any information provided. All dimensions are within + or - 50mm.

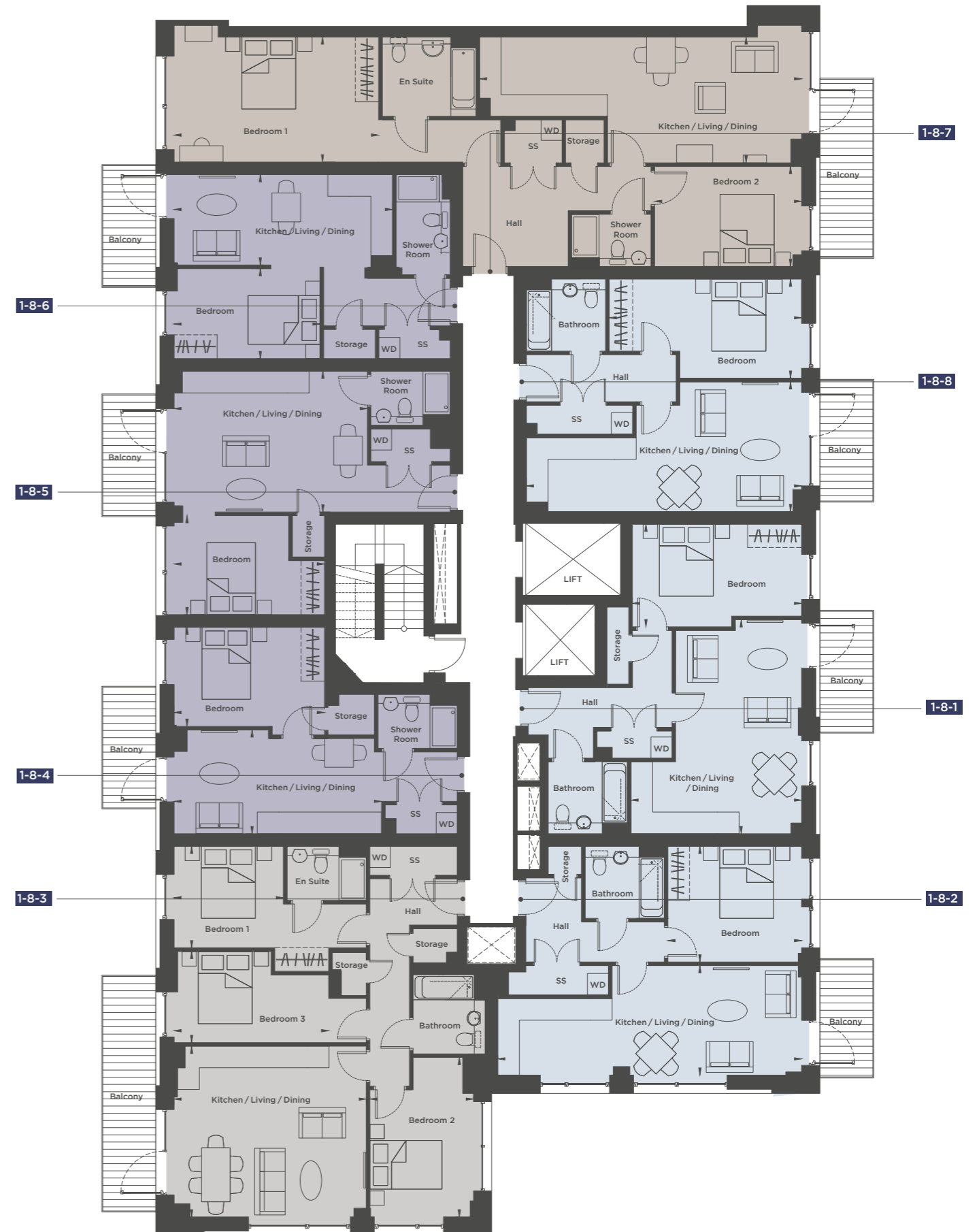


8TH FLOOR

- Studio Apartments
- 1 Bedroom Apartments
- 2 Bedroom Apartments
- 3 Bedroom Apartments

KEY

- ▶▶ Measurement points
- SS Services and Storage



9TH FLOOR

APARTMENT 1-9-1		1 Bedroom	
Kitchen/Living/Dining	5.9m x 4.7m	19'4" x 15'5"	
Bedroom	4.7m x 2.8m	15'4" x 9'2"	
Total Floor Area	53 sq m	570 sq ft	

APARTMENT 1-9-2		1 Bedroom	
Kitchen/Living/Dining	8.4m x 3.0m	27'7" x 9'10"	
Bedroom	3.7m x 3.2m	12'2" x 10'5"	
Total Floor Area	51 sq m	549 sq ft	

APARTMENT 1-9-3		3 Bedroom	
Kitchen/Living/Dining	5.3m x 4.7m	17'5" x 15'5"	
Bedroom 1	3.0m x 2.8m	9'10" x 9'2"	
Bedroom 2	4.4m x 2.9m	14'5" x 9'4"	
Bedroom 3	4.3m x 2.5m	14'1" x 8'2"	
Total Floor Area	86 sq m	926 sq ft	

APARTMENT 1-9-4		1 Bedroom	
Kitchen/Living/Dining	5.7m x 4.2m	18'7" x 13'6"	
Bedroom	5.8m x 2.8m	18'9" x 9'0"	
Total Floor Area	51 sq m	549 sq ft	

APARTMENT 1-9-5		1 Bedroom	
Kitchen/Living/Dining	7.6m x 3.7m	24'11" x 12'0"	
Bedroom	5.3m x 2.7m	17'4" x 8'10"	
Total Floor Area	50 sq m	538 sq ft	

APARTMENT 1-9-6		1 Bedroom	
Kitchen/Living/Dining	7.6m x 3.7m	24'11" x 12'0"	
Bedroom	5.3m x 3.0m	17'4" x 9'9"	
Total Floor Area	53 sq m	570 sq ft	

APARTMENT 1-9-7		1 Bedroom	
Kitchen/Living/Dining	7.6m x 3.7m	24'11" x 12'0"	
Bedroom	5.3m x 3.0m	17'4" x 9'9"	
Total Floor Area	53 sq m	570 sq ft	

APARTMENT 1-9-8		1 Bedroom	
Kitchen/Living/Dining	7.6m x 3.6m	24'11" x 11'8"	
Bedroom	5.3m x 2.8m	17'5" x 9'0"	
Total Floor Area	50 sq m	538 sq ft	

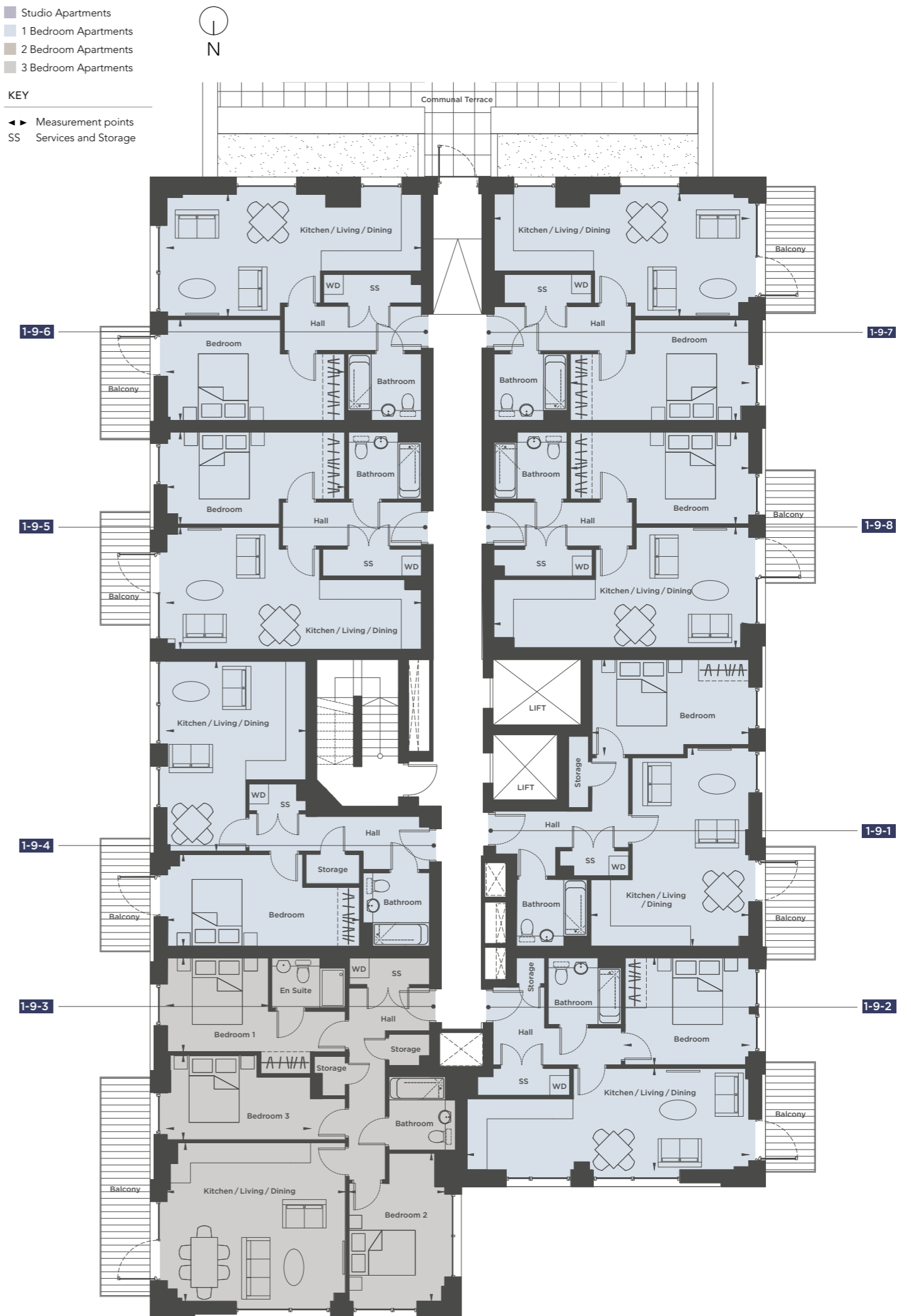
All areas and dimensions have been taken from architect plans prior to construction, therefore whilst the information is believed to be correct its accuracy cannot be guaranteed and does not form part of any contract. They are not intended to be used for carpet sizes or items of furniture. Purchasers must therefore rely on their own inspection to verify any information provided. All dimensions are within + or - 50mm.



9TH FLOOR

- Studio Apartments
- 1 Bedroom Apartments
- 2 Bedroom Apartments
- 3 Bedroom Apartments

- KEY
- ◀▶ Measurement points
 - SS Services and Storage



10TH FLOOR

APARTMENT 1-10-1		1 Bedroom	
Kitchen/Living/Dining	5.9m x 4.7m	19'4" x 15'5"	
Bedroom	4.7m x 2.8m	15'4" x 9'2"	
Total Floor Area	53 sq m	570 sq ft	

APARTMENT 1-10-2		1 Bedroom	
Kitchen/Living/Dining	8.4m x 3.0m	27'7" x 9'10"	
Bedroom	3.7m x 3.2m	12'2" x 10'5"	
Total Floor Area	51 sq m	549 sq ft	

APARTMENT 1-10-3		3 Bedroom	
Kitchen/Living/Dining	5.3m x 4.7m	17'5" x 15'5"	
Bedroom 1	3.0m x 2.8m	9'10" x 9'2"	
Bedroom 2	4.4m x 2.9m	14'5" x 9'4"	
Bedroom 3	4.3m x 2.5m	14'1" x 8'2"	
Total Floor Area	86 sq m	926 sq ft	

APARTMENT 1-10-4		1 Bedroom	
Kitchen/Living/Dining	5.7m x 4.2m	18'7" x 13'6"	
Bedroom	5.8m x 2.8m	18'9" x 8'10"	
Total Floor Area	51 sq m	549 sq ft	

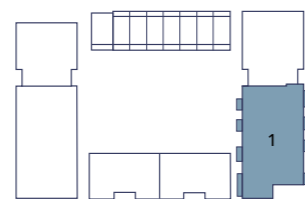
APARTMENT 1-10-5		1 Bedroom	
Kitchen/Living/Dining	7.6m x 3.7m	24'11" x 12'0"	
Bedroom	5.3m x 2.7m	17'4" x 8'10"	
Total Floor Area	50 sq m	538 sq ft	

APARTMENT 1-10-6		1 Bedroom	
Kitchen/Living/Dining	7.6m x 3.7m	24'11" x 12'0"	
Bedroom	5.3m x 3.0m	17'4" x 9'9"	
Total Floor Area	53 sq m	570 sq ft	

APARTMENT 1-10-7		1 Bedroom	
Kitchen/Living/Dining	7.6m x 3.7m	24'11" x 12'0"	
Bedroom	5.3m x 3.0m	17'4" x 9'9"	
Total Floor Area	53 sq m	570 sq ft	

APARTMENT 1-10-8		1 Bedroom	
Kitchen/Living/Dining	7.6m x 3.6m	24'11" x 11'8"	
Bedroom	5.3m x 2.8m	17'5" x 9'0"	
Total Floor Area	50 sq m	538 sq ft	

All areas and dimensions have been taken from architect plans prior to construction, therefore whilst the information is believed to be correct its accuracy cannot be guaranteed and does not form part of any contract. They are not intended to be used for carpet sizes or items of furniture. Purchasers must therefore rely on their own inspection to verify any information provided. All dimensions are within + or - 50mm.

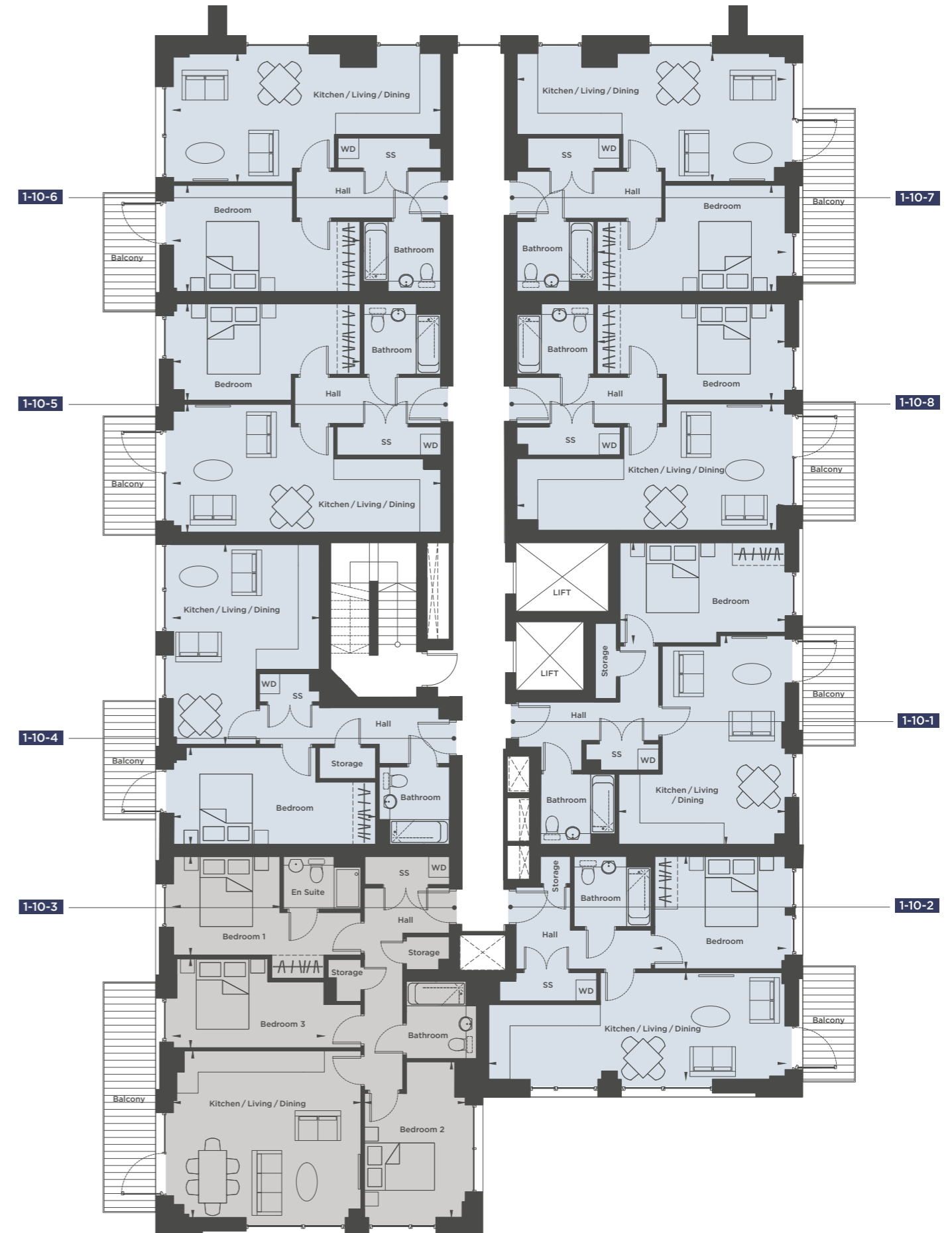


10TH FLOOR

- Studio Apartments
- 1 Bedroom Apartments
- 2 Bedroom Apartments
- 3 Bedroom Apartments

KEY

- ◀▶ Measurement points
- SS Services and Storage



11TH FLOOR

APARTMENT 1-11-1	2 Bedroom	
Kitchen/Living/Dining	6.5m x 3.6m	21'3" x 11'9"
Bedroom 1	5.7m x 2.8m	18'6" x 9'1"
Bedroom 2	3.4m x 3.0m	11'0" x 9'9"
Total Floor Area	68 sq m	732 sq ft

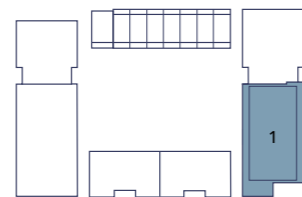
APARTMENT 1-11-2	1 Bedroom	
Kitchen/Living/Dining	6.5m x 5.8m	21'3" x 18'9"
Bedroom	4.1m x 3.7m	13'5" x 12'2"
Total Floor Area	61 sq m	657 sq ft

APARTMENT 1-11-3	Studio	
Kitchen/Living/Dining	7.9m x 4.7m	25'9" x 15'3"
Bedroom	4.0m x 3.2m	13'0" x 10'5"
Total Floor Area	47 sq m	506 sq ft

APARTMENT 1-11-4	2 Bedroom	
Kitchen/Living/Dining	5.4m x 5.2m	17'6" x 17'1"
Bedroom 1	5.7m x 2.5m	18'7" x 8'2"
Bedroom 2	5.7m x 2.8m	18'7" x 9'0"
Total Floor Area	73 sq m	786 sq ft

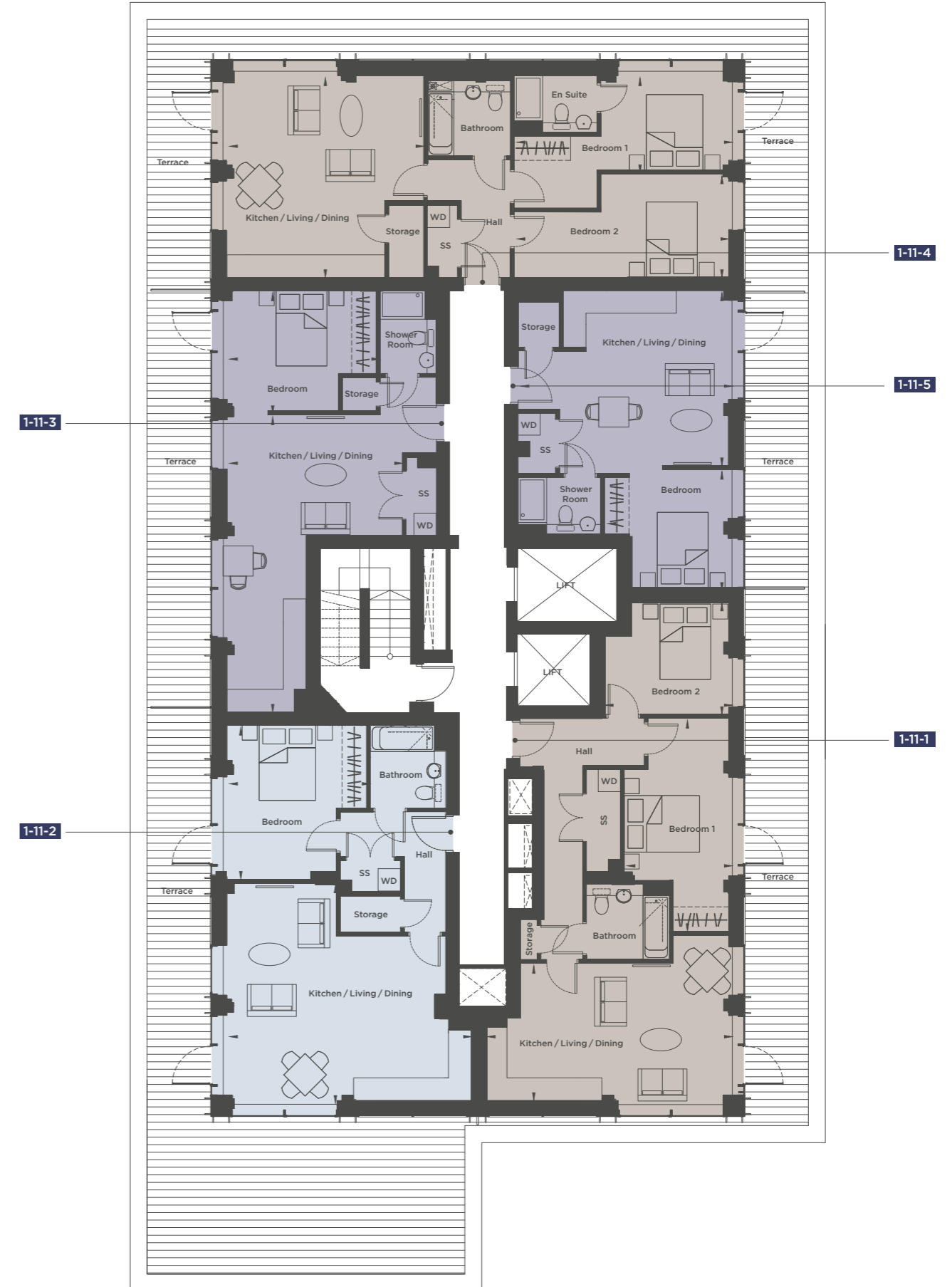
APARTMENT 1-11-5	Studio	
Kitchen/Living/Dining	5.6m x 4.6m	18'3" x 15'2"
Bedroom	3.3m x 3.1m	10'8" x 10'3"
Total Floor Area	41 sq m	441 sq ft

All areas and dimensions have been taken from architect plans prior to construction, therefore whilst the information is believed to be correct its accuracy cannot be guaranteed and does not form part of any contract. They are not intended to be used for carpet sizes or items of furniture. Purchasers must therefore rely on their own inspection to verify any information provided. All dimensions are within + or - 50mm.



11TH FLOOR

- Studio Apartments
 - 1 Bedroom Apartments
 - 2 Bedroom Apartments
 - 3 Bedroom Apartments
- KEY**
- ◀▶ Measurement points
 - SS Services and Storage



12TH FLOOR

APARTMENT 1-12-1	2 Bedroom	
Kitchen/Living/Dining	6.5m x 3.6m	21'3" x 11'9"
Bedroom 1	5.7m x 2.8m	18'6" x 9'1"
Bedroom 2	3.4m x 3.0m	11'0" x 9'9"
Total Floor Area	68 sq m	732 sq ft

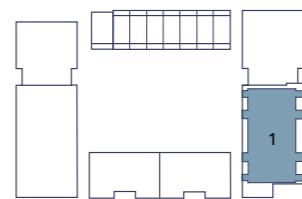
APARTMENT 1-12-2	1 Bedroom	
Kitchen/Living/Dining	6.5m x 5.8m	21'3" x 18'9"
Bedroom	4.1m x 3.7m	13'5" x 12'2"
Total Floor Area	61 sq m	657 sq ft

APARTMENT 1-12-3	Studio	
Kitchen/Living/Dining	7.9m x 4.7m	25'9" x 15'3"
Bedroom	4.0m x 3.2m	13'0" x 10'5"
Total Floor Area	47 sq m	506 sq ft

APARTMENT 1-12-4	2 Bedroom	
Kitchen/Living/Dining	5.4m x 5.2m	17'6" x 17'1"
Bedroom 1	5.7m x 2.5m	18'7" x 8'2"
Bedroom 2	5.7m x 2.8m	18'7" x 9'0"
Total Floor Area	73 sq m	786 sq ft

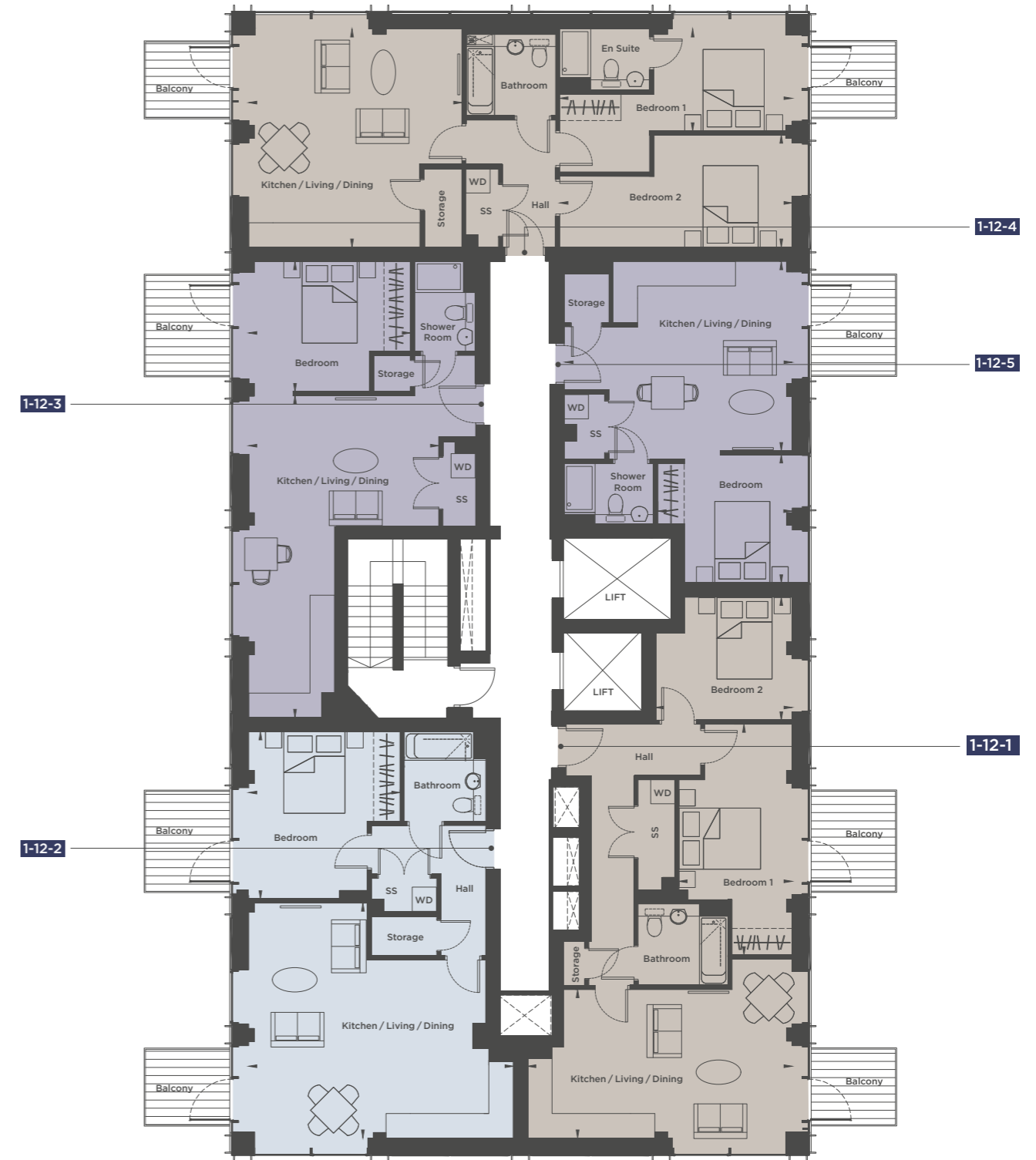
APARTMENT 1-12-5	Studio	
Kitchen/Living/Dining	5.6m x 4.6m	18'3" x 15'2"
Bedroom	3.3m x 3.1m	10'8" x 10'3"
Total Floor Area	41 sq m	441 sq ft

All areas and dimensions have been taken from architect plans prior to construction, therefore whilst the information is believed to be correct its accuracy cannot be guaranteed and does not form part of any contract. They are not intended to be used for carpet sizes or items of furniture. Purchasers must therefore rely on their own inspection to verify any information provided. All dimensions are within + or - 50mm.



12TH FLOOR

- Studio Apartments
 - 1 Bedroom Apartments
 - 2 Bedroom Apartments
 - 3 Bedroom Apartments
- KEY
- ◄► Measurement points
 - SS Services and Storage



THAMES WALK APARTMENTS

CORE 2

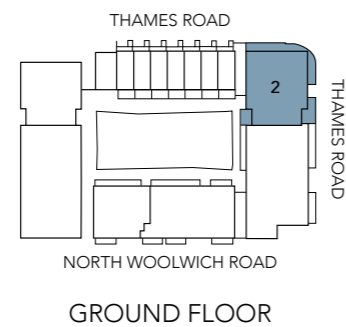
G_{ND} FLOOR

APARTMENT 2-GF-1			3 Bedroom		
Kitchen/Living/Dining	7.1m x 4.7m	23'4" x 15'5"			
Bedroom 1	6.9m x 3.2m	22'8" x 10'6"			
Bedroom 2	4.9m x 2.6m	16'0" x 8'6"			
Bedroom 3	3.7m x 2.2m	12'2" x 7'2"			
Total Floor Area	92 sq m	990 sq ft			

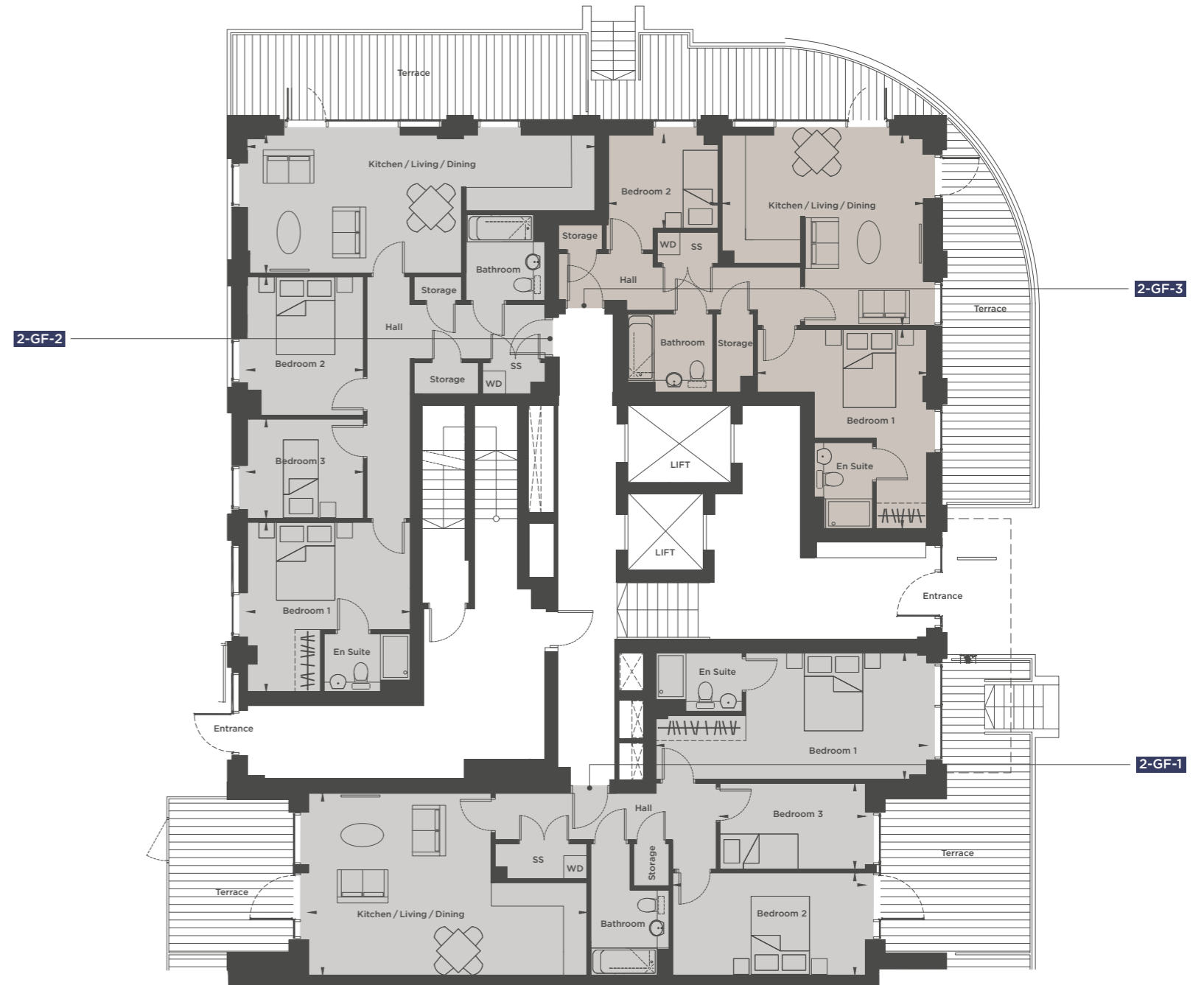
APARTMENT 2-GF-3			2 Bedroom		
Kitchen/Living/Dining	5.2m x 4.9m	17'0" x 16'1"			
Bedroom 1	5.1m x 4.3m	16'9" x 14'1"			
Bedroom 2	2.8m x 2.4m	9'2" x 7'10"			
Total Floor Area	66 sq m	710 sq ft			

APARTMENT 2-GF-2			3 Bedroom		
Kitchen/Living/Dining	8.9m x 3.5m	29'2" x 11'6"			
Bedroom 1	4.4m x 4.2m	14'5" x 13'9"			
Bedroom 2	3.6m x 3.0m	12'0" x 9'11"			
Bedroom 3	3.0m x 2.5m	9'11" x 8'2"			
Total Floor Area	86 sq m	926 sq ft			

All areas and dimensions have been taken from architect plans prior to construction, therefore whilst the information is believed to be correct its accuracy cannot be guaranteed and does not form part of any contract. They are not intended to be used for carpet sizes or items of furniture. Purchasers must therefore rely on their own inspection to verify any information provided. All dimensions are within + or - 50mm.



- Studio Apartments
 - 1 Bedroom Apartments
 - 2 Bedroom Apartments
 - 3 Bedroom Apartments
- KEY
- ◀▶ Measurement points
 - SS Services and Storage



1ST FLOOR

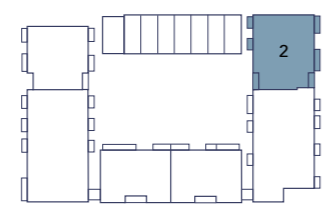
APARTMENT 2-1-1			3 Bedroom		
Kitchen/Living/Dining	6.0m x 4.7m	19'8" x 15'4"			
Bedroom 1	4.6m x 3.0m	15'1" x 9'10"			
Bedroom 2	3.3m x 3.3m	10'9" x 10'9"			
Bedroom 3	3.3m x 2.1m	10'9" x 6'10"			
Total Floor Area	93 sq m	1001 sq ft			

APARTMENT 2-1-3			3 Bedroom		
Kitchen/Living/Dining	7.3m x 5.6m	23'11" x 18'2"			
Bedroom 1	4.9m x 2.9m	16'0" x 9'4"			
Bedroom 2	3.8m x 3.0m	12'4" x 9'8"			
Bedroom 3	4.2m x 2.7m	13'7" x 8'10"			
Total Floor Area	98 sq m	1055 sq ft			

APARTMENT 2-1-2			3 Bedroom		
Kitchen/Living/Dining	9.3m x 4.9m	30'5" x 16'1"			
Bedroom 1	4.9m x 4.3m	16'1" x 14'0"			
Bedroom 2	5.5m x 2.8m	18'0" x 9'1"			
Bedroom 3	4.2m x 3.2m	13'7" x 10'5"			
Total Floor Area	111 sq m	1195 sq ft			

All areas and dimensions have been taken from architect plans prior to construction, therefore whilst the information is believed to be correct its accuracy cannot be guaranteed and does not form part of any contract. They are not intended to be used for carpet sizes or items of furniture. Purchasers must therefore rely on their own inspection to verify any information provided. All dimensions are within + or - 50mm.

- Studio Apartments
 - 1 Bedroom Apartments
 - 2 Bedroom Apartments
 - 3 Bedroom Apartments
- KEY**
- ◄► Measurement points
 - SS Services and Storage



1ST FLOOR



2ND FLOOR **4TH** FLOOR **6TH** FLOOR

APARTMENTS 2-2-1, 2-4-1, 2-6-1			1 Bedroom
Kitchen/Living/Dining	7.0m x 3.4m	23'1" x 11'0"	
Bedroom	4.1m x 3.1m	13'4" x 10'2"	
Total Floor Area	50 sq m	538 sq ft	

APARTMENTS 2-2-2, 2-4-2, 2-6-2			2 Bedroom
Kitchen/Living/Dining	6.1m x 4.7m	20'0" x 15'4"	
Bedroom 1	4.8m x 2.8m	15'7" x 9'0"	
Bedroom 2	4.8m x 2.3m	15'7" x 7'7"	
Total Floor Area	69 sq m	743 sq ft	

APARTMENTS 2-2-3, 2-4-3, 2-6-3			1 Bedroom
Kitchen/Living/Dining	6.1m x 4.2m	19'9" x 13'8"	
Bedroom	4.2m x 2.9m	13'8" x 9'4"	
Total Floor Area	55 sq m	592 sq ft	

APARTMENTS 2-2-4, 2-4-4, 2-6-4			1 Bedroom
Kitchen/Living/Dining	7.6m x 3.7m	24'11" x 12'0"	
Bedroom	4.1m x 2.9m	13'6" x 9'4"	
Total Floor Area	52 sq m	560 sq ft	

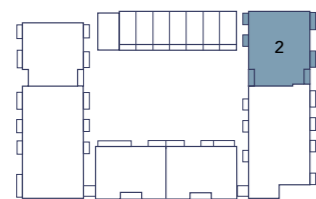
APARTMENTS 2-2-5, 2-4-5, 2-6-5			2 Bedroom
Kitchen/Living/Dining	5.6m x 4.9m	18'3" x 16'1"	
Bedroom 1	3.7m x 3.1m	12'0" x 10'2"	
Bedroom 2	3.7m x 3.3m	12'0" x 10'8"	
Total Floor Area	70 sq m	753 sq ft	

All areas and dimensions have been taken from architect plans prior to construction, therefore whilst the information is believed to be correct its accuracy cannot be guaranteed and does not form part of any contract. They are not intended to be used for carpet sizes or items of furniture. Purchasers must therefore rely on their own inspection to verify any information provided. All dimensions are within + or - 50mm.

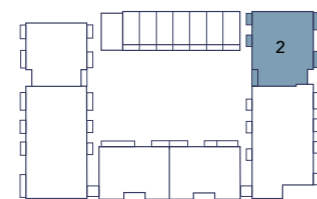
- Studio Apartments
- 1 Bedroom Apartments
- 2 Bedroom Apartments
- 3 Bedroom Apartments

KEY

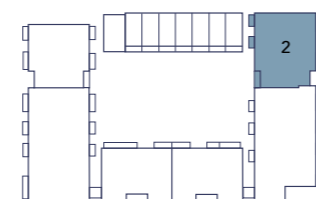
- ▶▶ Measurement points
- SS Services and Storage



2ND FLOOR



4TH FLOOR



6TH FLOOR

3RD FLOOR

5TH FLOOR

APARTMENTS 2-3-1, 2-5-1		1 Bedroom	
Kitchen/Living/Dining	7.0m x 3.4m	22'11" x 11'0"	
Bedroom	4.1m x 3.1m	13'4" x 10'2"	
Total Floor Area	50 sq m	538 sq ft	

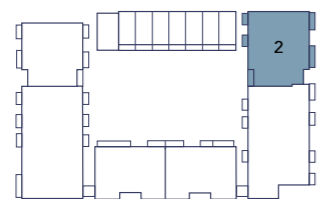
APARTMENTS 2-3-2, 2-5-2		2 Bedroom	
Kitchen/Living/Dining	6.1m x 4.7m	20'0" x 15'4"	
Bedroom 1	4.8m x 2.8m	15'7" x 9'0"	
Bedroom 2	4.8m x 2.3m	15'7" x 7'7"	
Total Floor Area	69 sq m	743 sq ft	

APARTMENTS 2-3-3, 2-5-3		1 Bedroom	
Kitchen/Living/Dining	6.1m x 4.2m	19'9" x 13'8"	
Bedroom	4.2m x 2.9m	13'8" x 9'4"	
Total Floor Area	55 sq m	592 sq ft	

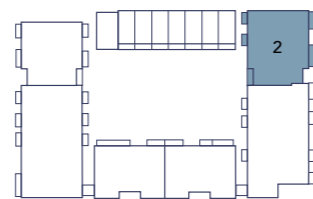
APARTMENTS 2-3-4, 2-5-4		1 Bedroom	
Kitchen/Living/Dining	7.6m x 3.7m	24'11" x 12'0"	
Bedroom	4.1m x 2.9m	13'5" x 9'4"	
Total Floor Area	52 sq m	560 sq ft	

APARTMENTS 2-3-5, 2-5-5		2 Bedroom	
Kitchen/Living/Dining	5.6m x 4.9m	18'3" x 16'1"	
Bedroom 1	3.7m x 3.1m	12'0" x 10'2"	
Bedroom 2	3.7m x 3.3m	12'0" x 10'8"	
Total Floor Area	70 sq m	753 sq ft	

All areas and dimensions have been taken from architect plans prior to construction, therefore whilst the information is believed to be correct its accuracy cannot be guaranteed and does not form part of any contract. They are not intended to be used for carpet sizes or items of furniture. Purchasers must therefore rely on their own inspection to verify any information provided. All dimensions are within + or - 50mm.



3RD FLOOR



5TH FLOOR

- Studio Apartments
- 1 Bedroom Apartments
- 2 Bedroom Apartments
- 3 Bedroom Apartments

KEY

- ◀▶ Measurement points
- SS Services and Storage



7TH FLOOR

APARTMENT 2-7-1		1 Bedroom	
Kitchen/Living/Dining	7.0m x 3.4m	23'0" x 11'0"	
Bedroom	4.1m x 3.1m	13'4" x 10'2"	
Total Floor Area	50 sq m	538 sq ft	

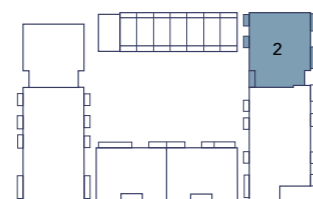
APARTMENT 2-7-2		2 Bedroom	
Kitchen/Living/Dining	6.1m x 4.7m	20'0" x 15'4"	
Bedroom 1	4.8m x 2.8m	15'7" x 9'0"	
Bedroom 2	4.8m x 2.3m	15'7" x 7'7"	
Total Floor Area	69 sq m	743 sq ft	

APARTMENT 2-7-3		1 Bedroom	
Kitchen/Living/Dining	6.1m x 4.2m	19'9" x 13'8"	
Bedroom	4.2m x 2.9m	13'8" x 9'4"	
Total Floor Area	55 sq m	592 sq ft	

APARTMENT 2-7-4		1 Bedroom	
Kitchen/Living/Dining	7.6m x 3.7m	24'11" x 12'0"	
Bedroom	4.1m x 2.9m	13'5" x 9'4"	
Total Floor Area	52 sq m	560 sq ft	

APARTMENT 2-7-5		2 Bedroom	
Kitchen/Living/Dining	5.6m x 4.9m	18'3" x 16'1"	
Bedroom 1	3.7m x 3.1m	12'0" x 10'2"	
Bedroom 2	3.7m x 3.3m	12'0" x 10'8"	
Total Floor Area	70 sq m	753 sq ft	

All areas and dimensions have been taken from architect plans prior to construction, therefore whilst the information is believed to be correct its accuracy cannot be guaranteed and does not form part of any contract. They are not intended to be used for carpet sizes or items of furniture. Purchasers must therefore rely on their own inspection to verify any information provided. All dimensions are within + or - 50mm.



7TH FLOOR

- Studio Apartments
- 1 Bedroom Apartments
- 2 Bedroom Apartments
- 3 Bedroom Apartments

KEY

- ◀▶ Measurement points
- SS Services and Storage



8TH FLOOR

APARTMENT 2-8-1		1 Bedroom	
Kitchen/Living/Dining	7.0m x 3.4m	22'11" x 11'0"	
Bedroom	4.1m x 3.1m	13'4" x 10'2"	
Total Floor Area	50 sq m	538 sq ft	

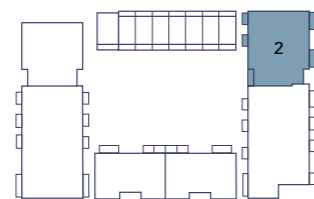
APARTMENT 2-8-2		2 Bedroom	
Kitchen/Living/Dining	6.1m x 4.7m	20'0" x 15'4"	
Bedroom 1	4.8m x 2.8m	15'7" x 9'0"	
Bedroom 2	4.8m x 2.3m	15'7" x 7'7"	
Total Floor Area	69 sq m	743 sq ft	

APARTMENT 2-8-3		1 Bedroom	
Kitchen/Living/Dining	6.1m x 4.2m	19'9" x 13'7"	
Bedroom	4.2m x 2.9m	13'8" x 9'4"	
Total Floor Area	55 sq m	592 sq ft	

APARTMENT 2-8-4		1 Bedroom	
Kitchen/Living/Dining	7.6m x 3.7m	24'11" x 12'0"	
Bedroom	4.1m x 2.9m	13'5" x 9'4"	
Total Floor Area	52 sq m	560 sq ft	

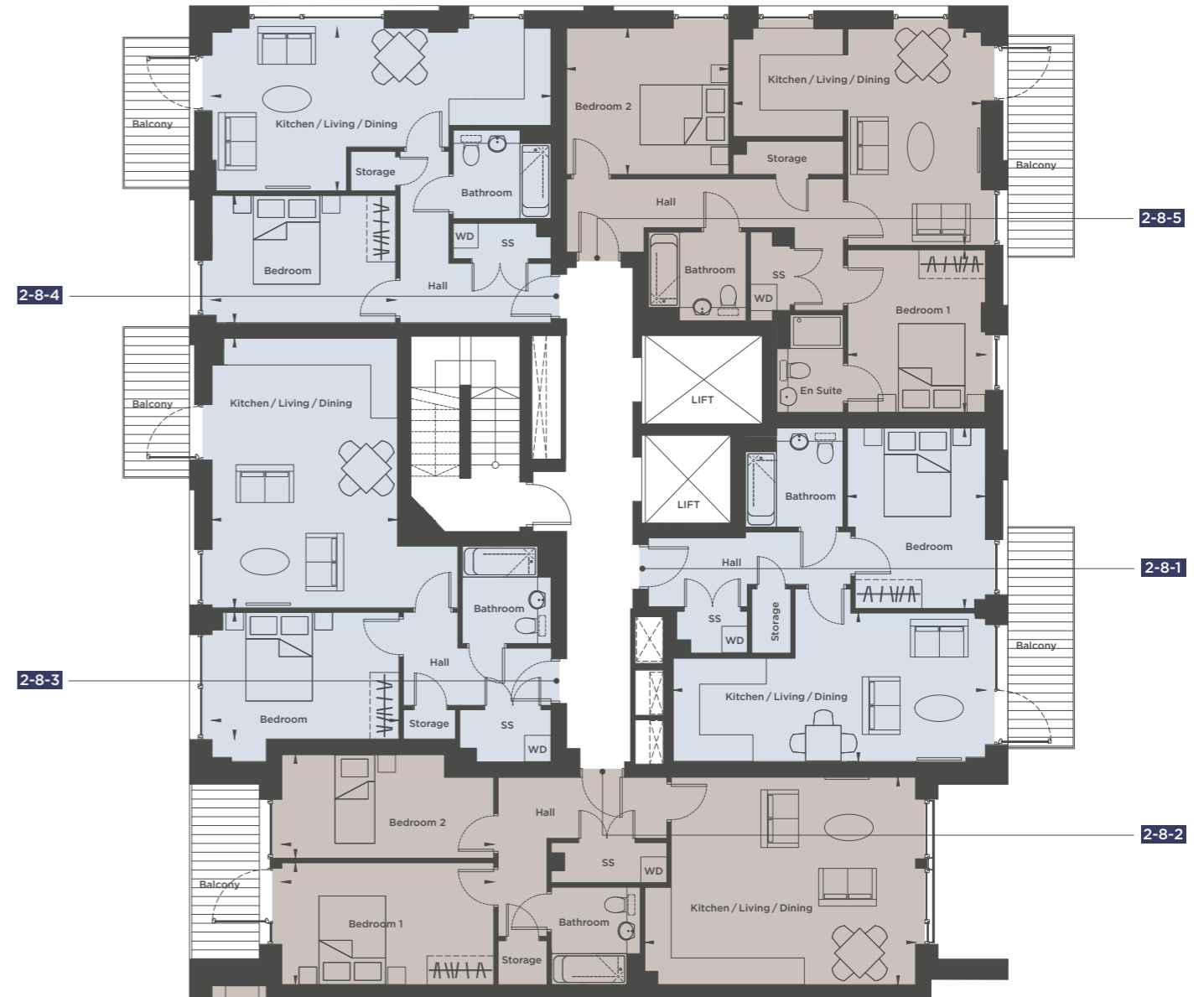
APARTMENT 2-8-5		2 Bedroom	
Kitchen/Living/Dining	5.6m x 4.9m	18'3" x 16'1"	
Bedroom 1	3.7m x 3.1m	12'0" x 10'2"	
Bedroom 2	3.7m x 3.3m	12'0" x 10'8"	
Total Floor Area	70 sq m	753 sq ft	

All areas and dimensions have been taken from architect plans prior to construction, therefore whilst the information is believed to be correct its accuracy cannot be guaranteed and does not form part of any contract. They are not intended to be used for carpet sizes or items of furniture. Purchasers must therefore rely on their own inspection to verify any information provided. All dimensions are within + or - 50mm.



8TH FLOOR

- Studio Apartments
 - 1 Bedroom Apartments
 - 2 Bedroom Apartments
 - 3 Bedroom Apartments
- KEY**
- ▶▶ Measurement points
 - SS Services and Storage



A DYNAMIC PRESENCE IN LONDON

INNOVATIVE LIVING

Established over 40 years ago, Redrow is a FTSE 250 company and one of the UK's leading residential property developers. We are a committed and enthusiastic team taking pride in the homes we build and developments we create.

As a premium developer we believe in beautiful and innovative contemporary design, unrivalled craftsmanship and the highest standards of customer care.

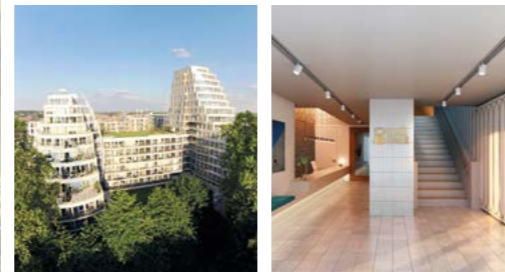
London is at the heart of our nationwide development business. As a strong market capital, there is considerable demand for luxury homes from both UK and international buyers, and investors.

Redrow's achievements have been recognised with several schemes and developments already delivering prestigious awards.

A SUSTAINABLE REDROW

Redrow has set up Redrow Aspirations 2018 action plan to ensure that year on year our business continues to improve in environmental sustainability, aiming to be one of the most sustainable and socially responsible companies in our field.

In 2017, Redrow were awarded gold in the NextGeneration benchmarking system for sustainability.



Royal Docks Partnership
1st Floor Unex Tower,
7 Station Street, London E15 1AZ
Phone: 020 8536 5120

RECENT AWARDS

2017 INTERIOR DESIGN AWARDS
2017 BARNET LANDSCAPE AWARDS



AIMING TO ACHIEVE A BETTER GLOBAL FUTURE

ECONOMIC GROWTH

Spending in our supply chain supports a large number of UK businesses, predominantly in the construction industry. Our industry-leading work to help address the skills shortage has seen us recognised as a Top 100 Apprenticeship employer for the fifth consecutive year in 2017.

VIBRANT CITIES

In 2017 Redrow committed £163 million to improving local communities, including provision of facilities to support education, health, and transport. We design our developments to have safe and attractive streets, particularly for pedestrians and cyclists, and focus on creating natural spaces where people and nature can thrive, together.

LIFE ON LAND

Our work to protect the environment includes our partnership with the Bumblebee Conservation Trust and our longstanding membership of WWF's Global Forest and Trade Network. In 2017 we created 115 hectares of public open space for the enjoyment of all.

BUILDING PARTNERSHIP

We are committed to a number of strategic partnerships with local colleges which provides a variety of opportunities to help embed classroom based learning, for construction and the built environment students.

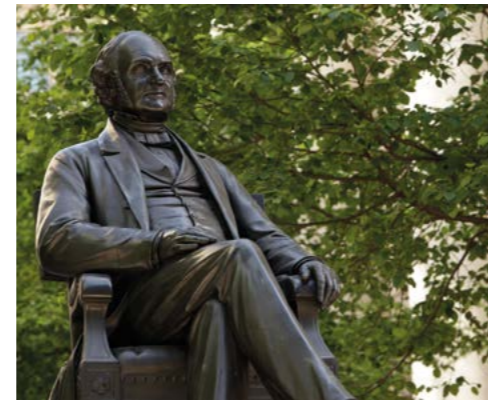
LONDON HAS BEEN OUR HOME FOR OVER 150 YEARS

PEABODY HAS OVER 150 YEARS OF EXPERIENCE AND EXPERTISE IN MANAGING PROPERTY IN LONDON. FOUNDED BY THE AMERICAN FINANCIER AND PHILANTHROPIST GEORGE PEABODY IN 1862, THE ORGANISATION NOW MANAGES OVER 55,000 HOMES.

Peabody delivers long-term returns on investment. It has a strong balance sheet with low gearing and a modest debt burden. Astute business planning, together with robust governance, and an asset base of £6.3bn, means that Peabody is well placed to build thousands more top quality, well-maintained homes each year.

In line with the social purpose of its founder, the organisation re-invests its surpluses to provide more homes and services. Last year it generated a surplus of £175m, investing £252m in building new homes, and £68m in maintaining existing homes. It also runs a community foundation, helping to create prosperity and success for people in London and the south-east of the UK.

Peabody creates great places where people want to live, adding value through long-term, patient investment. This historic organisation is known for upholding high design standards to create homes in great locations which are safe, easy to maintain, and long-lasting.



RECENT AWARDS



WWW.PONTOONREACH.CO.UK

Royal Docks Partnership

1st Floor Unex Tower,
7 Station Street, London E15 1AZ
Phone: 020 8536 5120



The information contained in this document is provided for general guidelines only and does not form the whole or any part of any offer, contract or warranty. These particulars should not be relied upon as accurately describing any of the specific matters described by any order under the Consumer Protection from Unfair Trading Regulations 2008. Customers are strongly advised to contact a Redrow Homes Limited representative for further details and to satisfy themselves as to their accuracy. Your attention is drawn to the fact that it may not be possible to obtain all products as referred to in the specification. In such cases, a similar alternative will be provided. Redrow Homes Limited reserve the right to make these changes as required. All information and computer representations contained in this document are taken from design intent material and may be subject to further design development. Floorplans are for approximate measurements only. All measurements may vary within a tolerance of 5%. They are not intended to be used for carpet sizes, appliance sizes or items of furniture. Images are representative only. Maps are not to scale and show approximate locations only. Pontoon Reach is a marketing name and will not necessarily form part of the approved postal address. Printed August 2018.