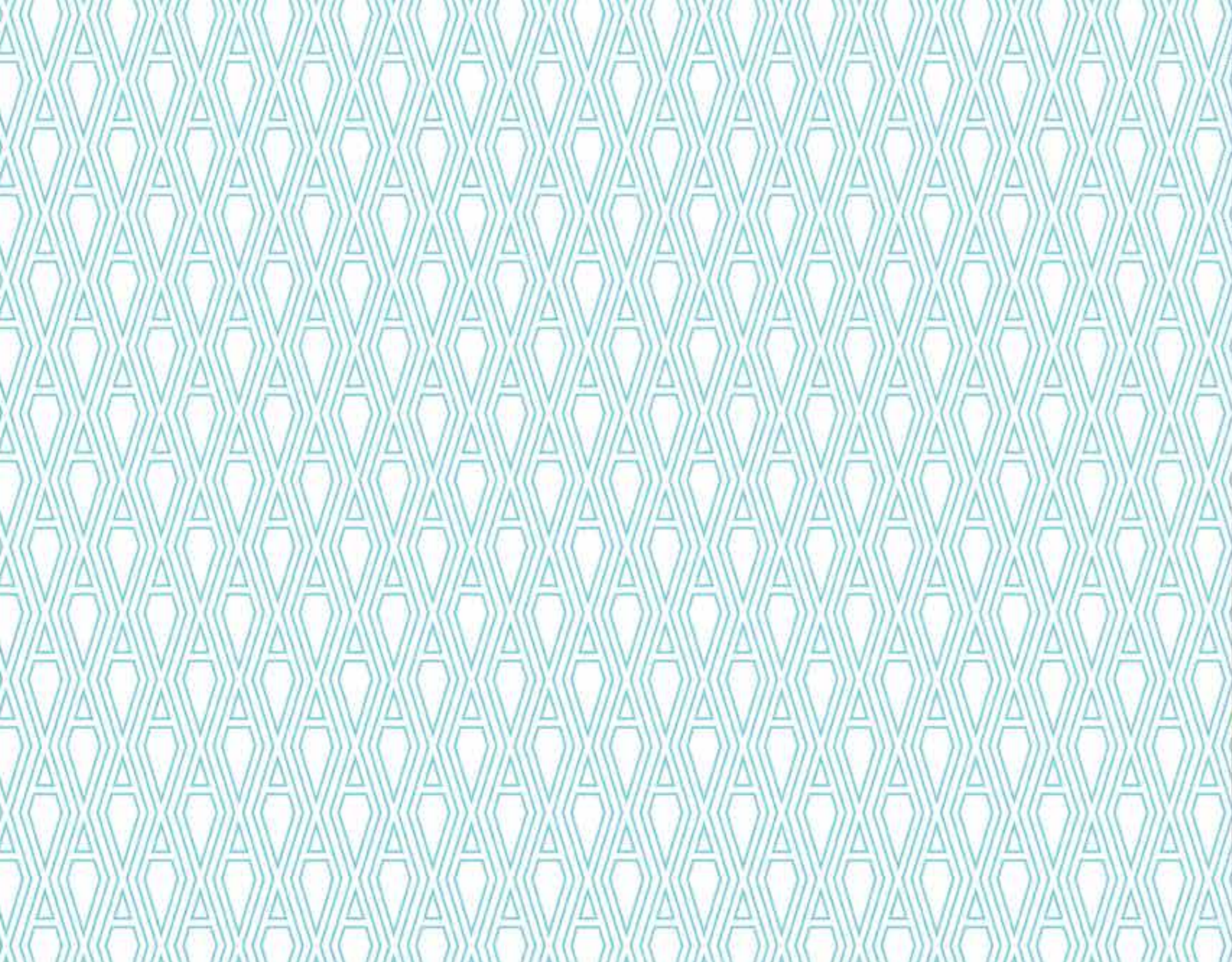




THE
AVENUE

LONDON NW6



EXPLORE EVERY AVENUE

Regal London reveals a brand new development – The Avenue. 68 new homes based in Queen's Park, one of London's most connected leafy suburbs.

Each apartment at The Avenue has been thoughtfully designed to the finest detail. The carefully considered specification creates a beautifully crafted home with elegant finishes.

The development casts aside the traditional notion of the busy London lifestyle, by forging a quality style of living in a tranquil corner of the city, with sprawling parks, quiet streets and stylish pavement cafés.

Located between Queen's Park and leafy West Hampstead, in the North West of London, The Avenue is surrounded by iconic neighbourhoods. Indulge in a relaxing Sunday brunch at one of the quaint cafés, or try the handmade breads and vintage cheeses at the farmers' market near Queen's Park. Residents can wander around the antiques markets and boutiques of Notting Hill and Primrose Hill.



QUEEN'S PARK DELIGHTS

BARS & PUBS



THE SALUSBURY

The Salusbury boasts all the trappings of an excellent local gastro pub. Whether in for a drink or enjoying a 'signature' three course menu on a special occasion, you will be looked after by the team with warmth and a genuine desire to please.



HUGO'S

Tucked down a cobbled mews in the heart of North West London's up and coming Queen's Park sits Hugo's, a family friendly café-bar-restaurant.



ALICE HOUSE

An exciting mix of vintage chic, innovative cocktails, craft beer and relaxed dining. The Alice House venue in Queen's Park offers a glamorous, yet intimate environment - the perfect place to eat and drink.



CALDO

Perfect for a tasty meal and a drop of the best local wine. Recently included in the Tatler Magazine Restaurant Guide as one of the top six Spanish bars in town, the wine list is carefully sourced from small, family wineries.

RESTAURANTS



CANAL DELI

Canal Deli is a beautiful deli during the weekdays. Also available for private hire and pop-up events during the evenings and weekends.



OSTUNI

Ostuni restaurant is London's first eatery dedicated to the cuisine and wines of Puglia. There is a large outside terrace reflecting the traditional materials used to build the Trulli of Puglia.



THE LEDBURY

The Ledbury is an award winning, 2 Michelin Star restaurant located in Notting Hill. Offering fine wine and food of the highest standards.



THE DOCK KITCHEN

An experimental kitchen always adapting the menu and trying new things depending on what is in season. The focus for this meal might be a specific place, a particular ingredient or just an idea that inspires the chef to cook exciting things.

Lively pubs, quirky eateries, trendy gyms and an explosion of culture.

Whatever you're looking for, it's never far away from The Avenue. Whether you are searching for a night out or for a quiet dinner, the options are endless.

Full of funky bars, lavish restaurants and quirky cafés this part of London has been the centre of London's cultural contribution for the last 40 years, creating an eclectic mix of tastes and styles.

SHOPS



GAILS ARTISAN BAKERY

Pick up a world-class loaf from a seasonal, ever-changing range. You can choose a sandwich, freshly made salad, or a slice of cake. Serving top-notch coffee made by carefully trained baristas.



QUEEN'S PARK BOOKS

Queen's Park Books shop, established in 2004, is an independent bookshop in the heart of Queen's Park. With a stock of over 13,000 titles and also specialising in deluxe and literary books with over 1,000 imported titles.



QUEENS PARK FLOWERS

A family run florist, this local business was established in 2005 and offers a wide selection of flowers, as well as vinyl records and gifts. They also provide floral displays for weddings, corporate events and private parties.



FARMERS' MARKET

Based at Salusbury Road Primary School, the Queen's Park farmers' market has fast become a favourite Sunday morning fixture in the area. March House Farm always has a queue for their free range meat and poultry, as does Grasmere Farm for their hot from the pan sausage sandwiches.

LEISURE



FITNESS FIRST

Offering the best equipment, range of classes, knowledgeable staff and professional advice in a welcoming environment, making them a leader in the global fitness industry.



YOGALOFT

A new space in the heart of Queen's Park where you can enjoy yoga in beautiful, light-filled surroundings. Classes, private lessons and workshops are available.



PARK TENNIS COURTS

Six all weather tennis courts within Queen's Park itself. Available to book and also available on a first come first served basis.



FRAME

At Frame there is no such thing as a dull work out. Lead by original instructors who bring music and attitude to keep you interested and motivated.



A city full of character
that never ceases
to amaze.

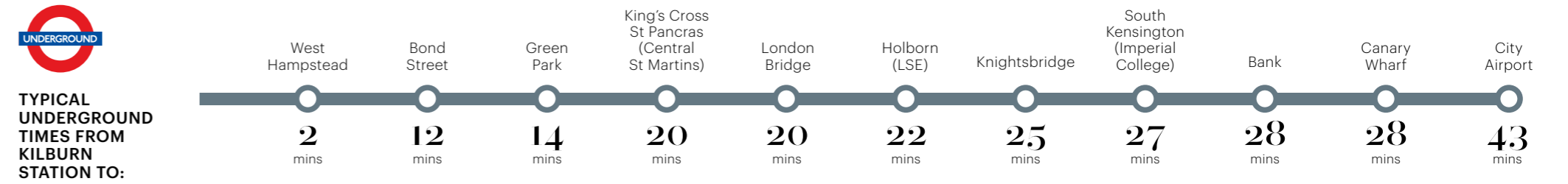
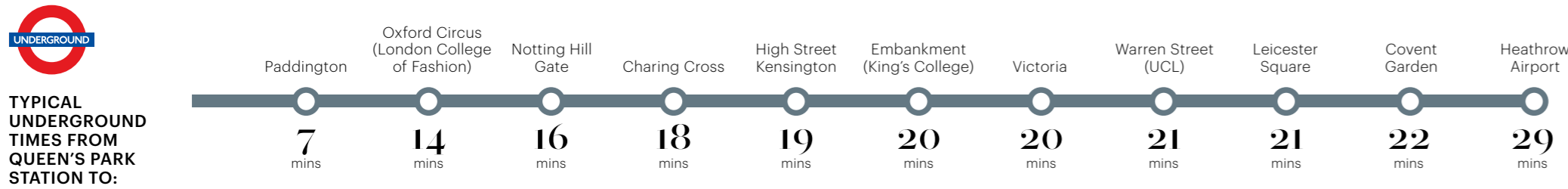
A wealth of culture is on your doorstep waiting to be discovered as you explore the city's sprawling streets. Get lost in the plethora of museums or lose track of time in London's famous department stores and amble around the many majestic parks. There is always something new to uncover in London, the city that never tires.





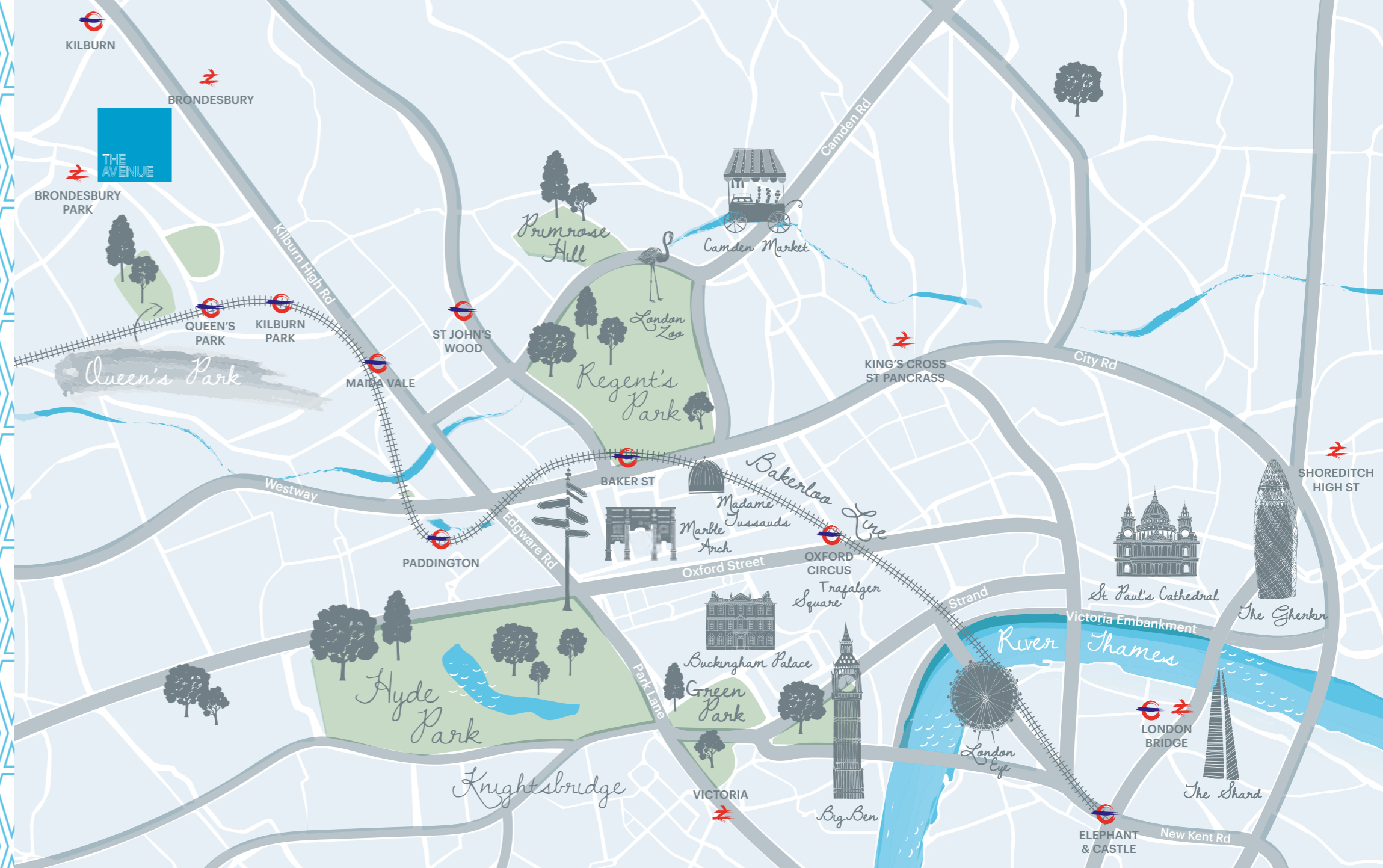
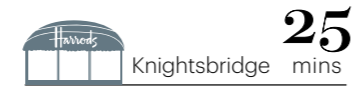
A city with no limits.

The Avenue has access to the whole of London via four stations. Jump on the Overground, Jubilee or Bakerloo line to transport yourself anywhere in the city. Take the tube to the West End, Canary Wharf and The City and arrive within minutes. For the international jet setter, Heathrow and City Airports are both within 29 and 43 minutes.



Travel times courtesy of TfL

Step into London and take a journey around one of the most dynamic and historic cities in the world.



Travel times are from Queen's Park station and courtesy of TfL.

Shaping the future through learning.

A centre for academic excellence, London has some of the most famous and successful universities in the world, offering a wide selection of courses and specialities. Providing teaching at its finest with the very best facilities and resources. For years, London's world class institutions have been paving the way for world leaders, Nobel Prize winners and top entrepreneurs.



AVENUES TO SUCCESS



Travel Time **19** mins

Imperial College London

Travel Time **25** mins

ual: university of the arts london

Travel Time **22** mins

ual: university of the arts london central saint martins

Travel Time **17** mins

ual: university of the arts london college of fashion

Travel Time **15** mins

KING'S College LONDON

Travel Time **20** mins

Goldsmiths UNIVERSITY OF LONDON

Travel Time **30** mins

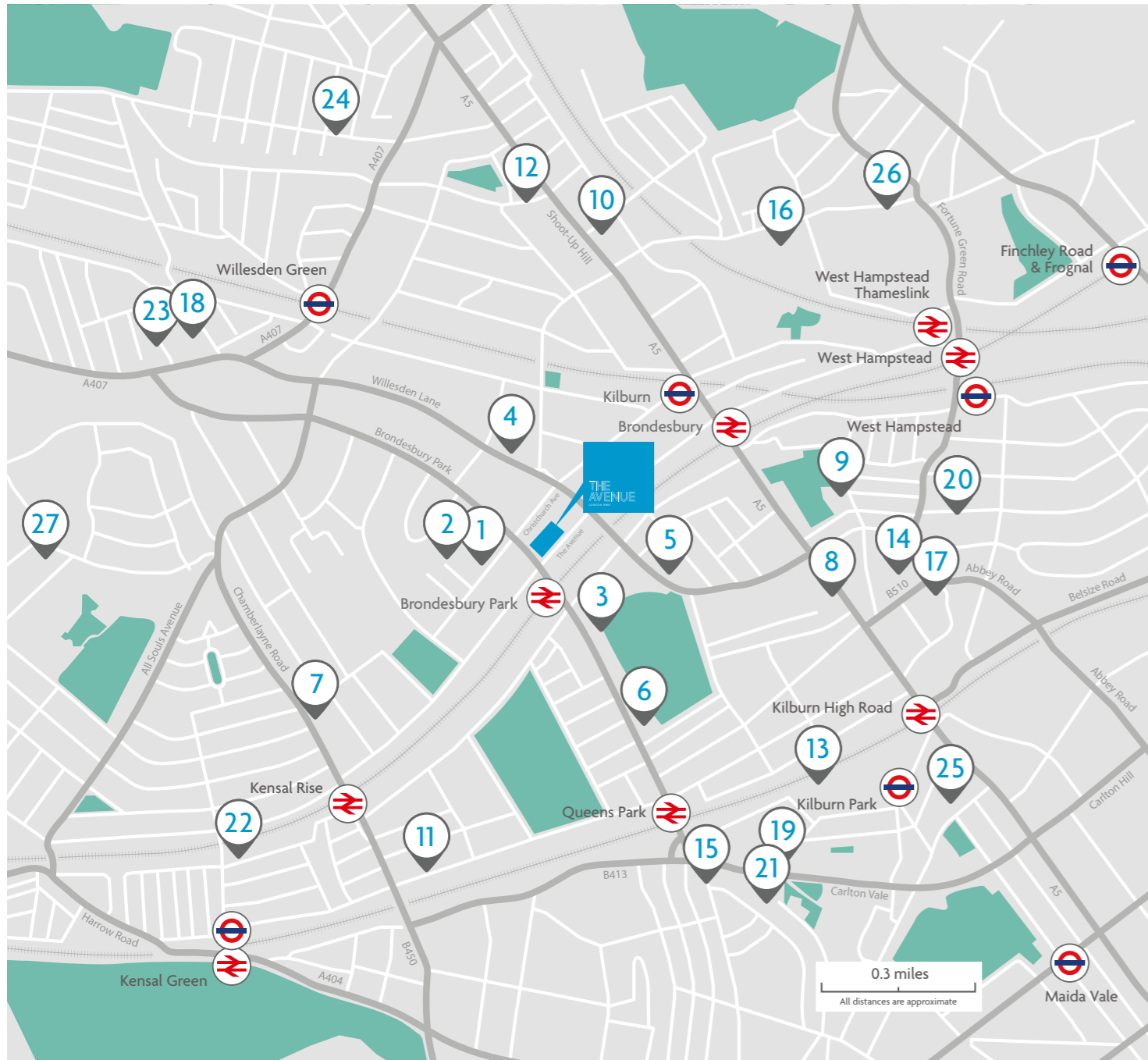
UCL

Travel Time **21** mins

CITY UNIVERSITY LONDON EST 1894

Travel Time **21** mins

Travel times are by car from The Avenue, courtesy of Google Maps.

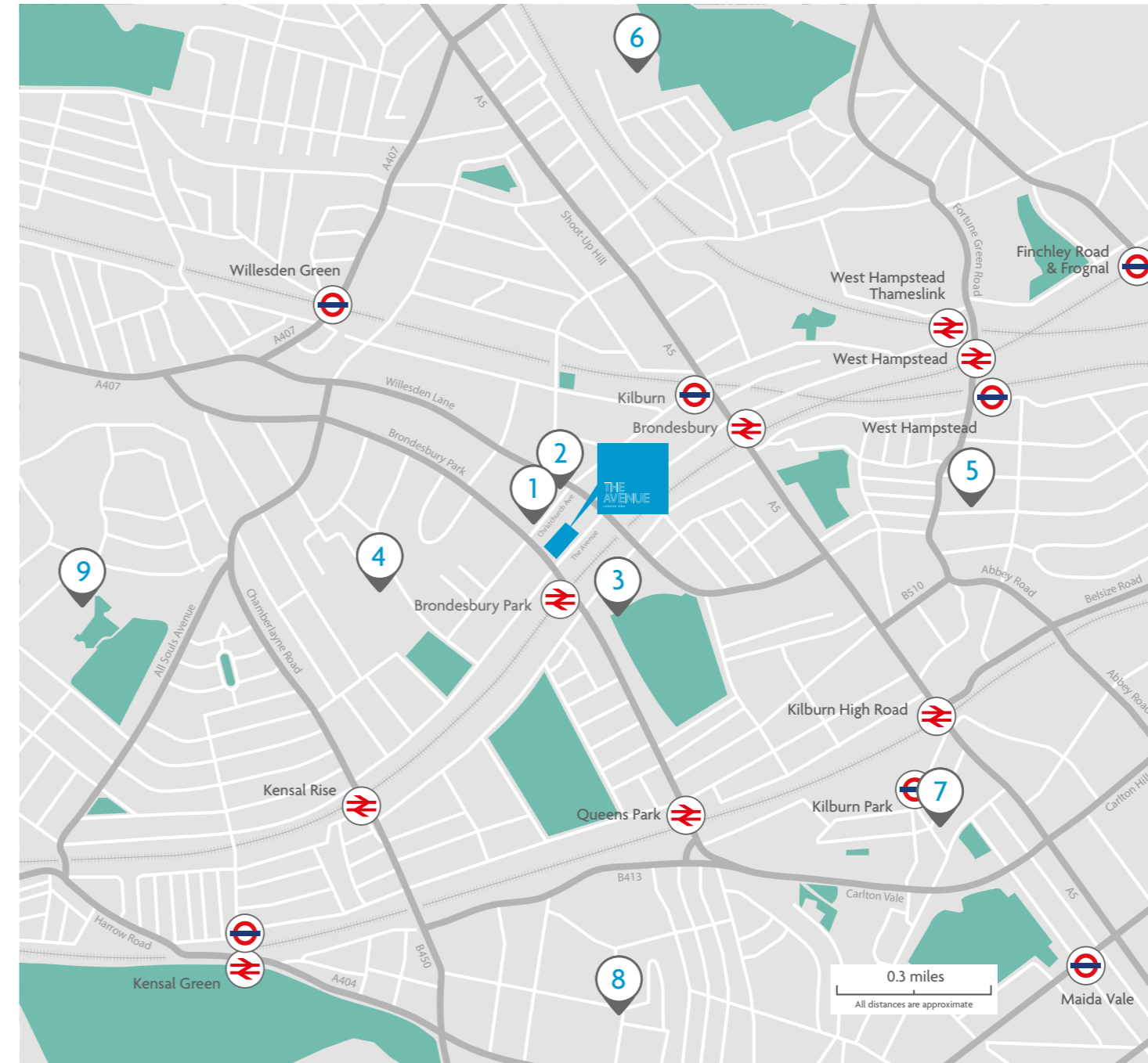


Local Primary Schools

Within 1 mile of The Avenue

- 1 Malorees Infant School
- 2 Malorees Junior School
- 3 Islamia Primary School
- 4 North West London Jewish Day School
- 5 Christ Church CofE Primary School
- 6 Salusbury Primary School
- 7 Manor School
- 8 Kilburn Grange School
- 9 Kingsgate Primary School
- 10 The Mulberry House School
- 11 Ark Franklin Primary Academy
- 12 Gesher Primary Special School
- 13 St Mary's RC Primary School
- 14 St Eugene de Mazenod Roman Catholic Primary School
- 15 St Luke's CofE Primary School
- 16 Beckford Primary School
- 17 St Mary's Kilburn Church of England Primary School
- 18 Convent of Jesus and Mary RC Infant School
- 19 The Kilburn Park School Foundation
- 20 Rainbow Montessori School
- 21 Carlton Vale Infant School
- 22 Princess Frederica CofE Primary School
- 23 St Mary Magdalen's Catholic Junior School
- 24 Anson Primary School
- 25 St Augustine's CofE Primary School
- 26 Emmanuel Church of England Primary School
- 27 Donnington Primary School

Source: Rightmove and Experian. Information is for guidance only and is subject to change.



Local Secondary Schools

Within 1 mile of The Avenue

- 1 Brondesbury College London
- 2 Marylebone Boys' School
- 3 Islamia School for Girls'
- 4 Queens Park Community School
- 5 Rainbow Montessori School
- 6 Hampstead School
- 7 St Augustine's CofE High School
- 8 The St Marylebone Church of England Bridge School
- 9 Capital City Academy

Source: Rightmove and Experian. Information is for guidance only and is subject to change.



DISCOVER

YOUR

AVENUE

RESIDENTS' FACILITIES



Residents' Facilities

Designed with you in mind, the development hosts an array of outstanding facilities, including a fully equipped fitness suite, residents' lobby and private concierge, and secure underground parking. There are also peaceful landscaped courtyard gardens to unwind in, bringing the tranquillity of leafy Queen's Park direct to your front door.





A fresh take on living.

Beautifully presented interiors provide the perfect backdrop to your home. Sleek kitchen units and stone worktops come together with the wood flooring to provide a stylish look. The chrome bathroom fittings and contemporary sanitaryware work in perfect harmony with the elegant bathroom tiles.





SPECIFICATIONS

A specification that matches the highest standards. It's the finishing touches that makes The Avenue a place to call home.



Hallway

Contemporary and sophisticated, wooden flooring runs throughout the hallways of each apartment.

- Wooden flooring
- Electronic video entry phone system
- High security multi-point locking entrance door
- White painted skirtings and architraves

Reception Room

Flawlessly finished, each reception room is cosy, comfortable and exceptionally stylish. Equipped with the latest technology access points, residents can install and enjoy state-of-the-art entertainment systems.

- Wooden flooring
- White painted skirtings and architraves
- Satellite/cable, TV, radio, data outlet point
- Telephone outlet point

Kitchen

The hub of the home, all kitchens have been considered to be elegant and functional in design. Stunning quartz stone worktops, chic German units and high-tech integrated appliances, create a space perfect for entertaining and relaxing.

- Contemporary German kitchen units with handleless doors
- Quartz worktop with an integral drainer and matching upstands
- Stainless steel undermounted sink
- Contemporary chrome kitchen tap
- Siemens appliances
- Integrated fridge/freezer
- Stainless steel fan assisted Siemens electric oven
- Four ring hob
- Telescopic style extractor hood
- Integrated washing machine (unless located in a built-in utility cupboard in the apartment)
- Integrated multi-function dishwasher
- Wooden flooring
- White painted skirtings and architraves
- Integrated wine coolers (In 2 & 3 bedroom apartments)
- Integrated microwaves (In 2 & 3 bedroom apartments)

Bedroom

A haven away from the bustling city, every bedroom is warm and welcoming. Luxurious carpets and modern, built-in fitted wardrobes, enable both indulgence and practicality.

- High quality fitted carpet with high quality underlay in all bedrooms (Studio apartment sleeping areas will feature single strip wooden flooring)
- White painted skirtings and architraves
- Fitted wardrobe to all bedrooms
- Satellite/cable, TV, radio, data outlet point
- Telephone outlet point

Bathroom/Shower Room

Fashionable white sanitaryware, striking wall and floor tiles and Grohe chrome fittings combine to create a sanctuary where residents can unwind after an eventful day.

- Natural stone/ceramic wall and floor tiles to all bath/shower rooms around bath or shower area
- Contemporary white sanitaryware
- Grohe chrome fittings
- Chrome ladder style heated towel rail
- Chrome shaver points
- Ventilation system
- Vanity unit
- Fitted wall mirror

General

Thermostatically controlled underfloor heating and refined recessed downlights are a feature in every apartment.

- Thermostatically controlled underfloor heating
- Recessed downlights throughout
- Stainless steel ironmongery
- Wood doors
- Contemporary white electric flush to wall plates for power and light switches
- Integrated building and individual apartment fire detection system

Communal areas

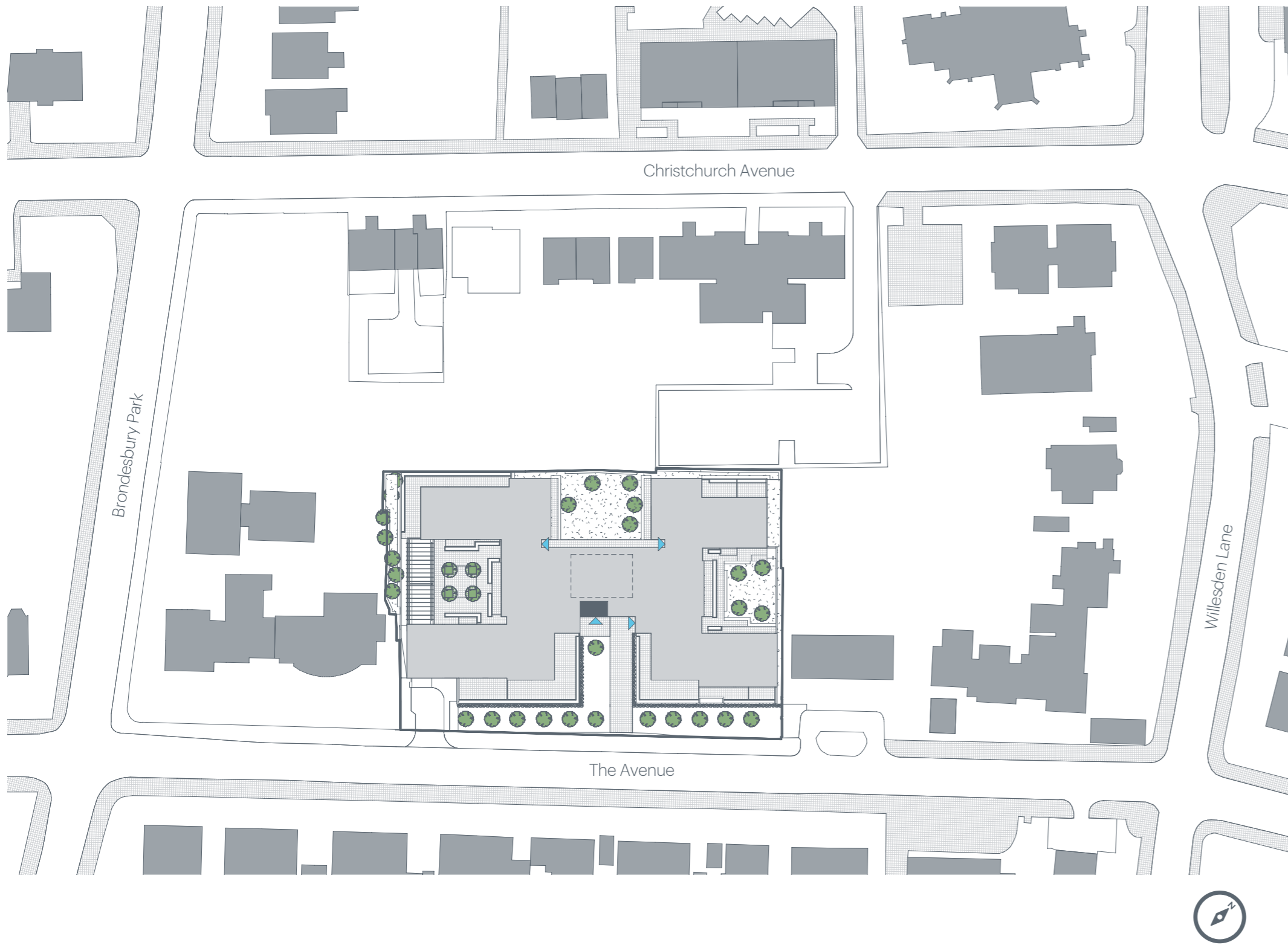
The development hosts an array of fantastic facilities, including an advanced fitness suite and private concierge service, available to cater to residents' every need. CCTV is also in operation for residents' extra peace of mind.

- CCTV to internal entrance and external common areas
- Concierge
- Gym
- Secure underground parking

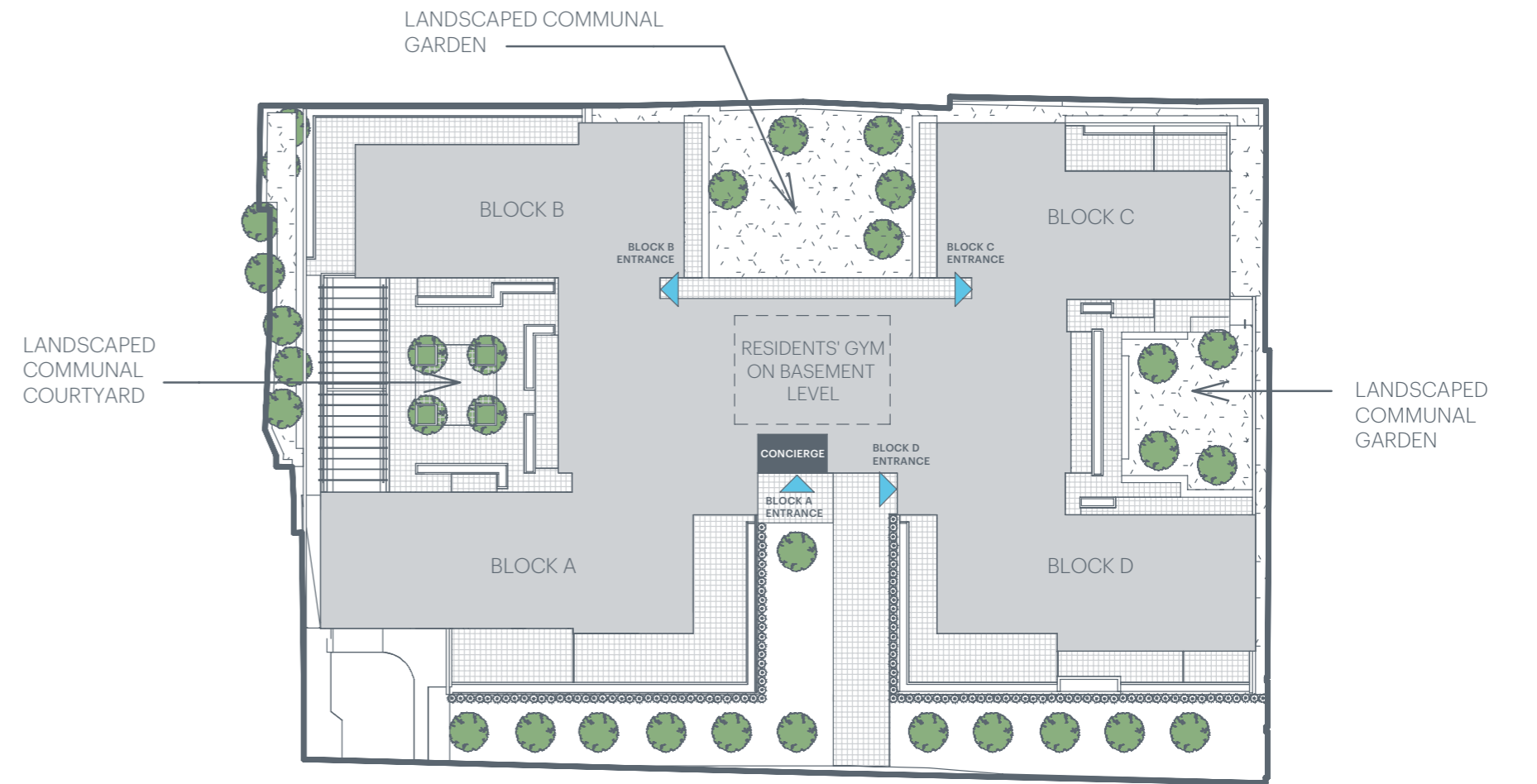
The Avenue development is now complete, therefore apartment specifications cannot be altered



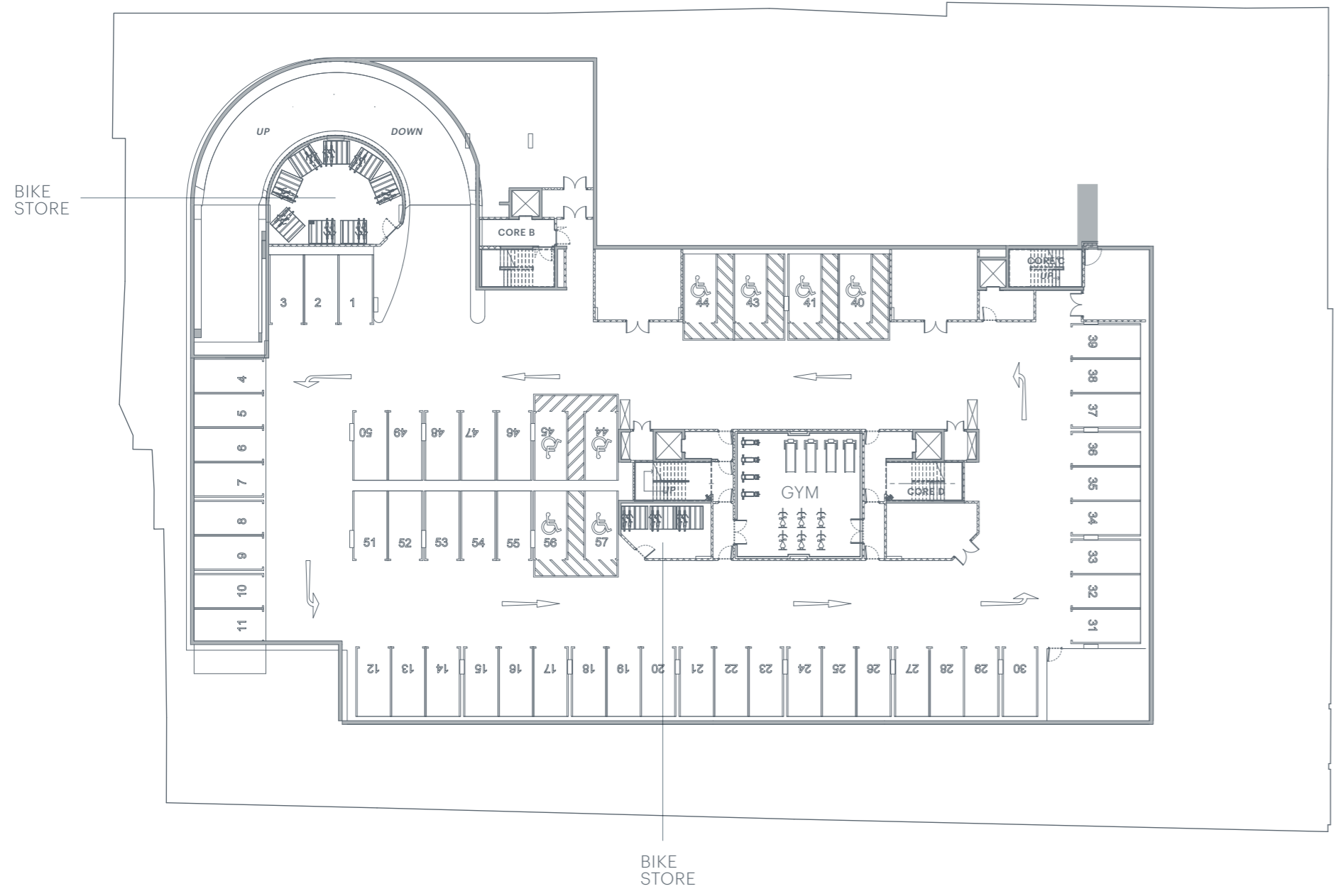
THE FLOOR PLANS*



SITE PLAN

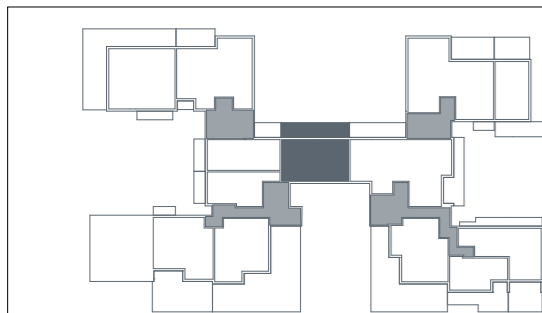
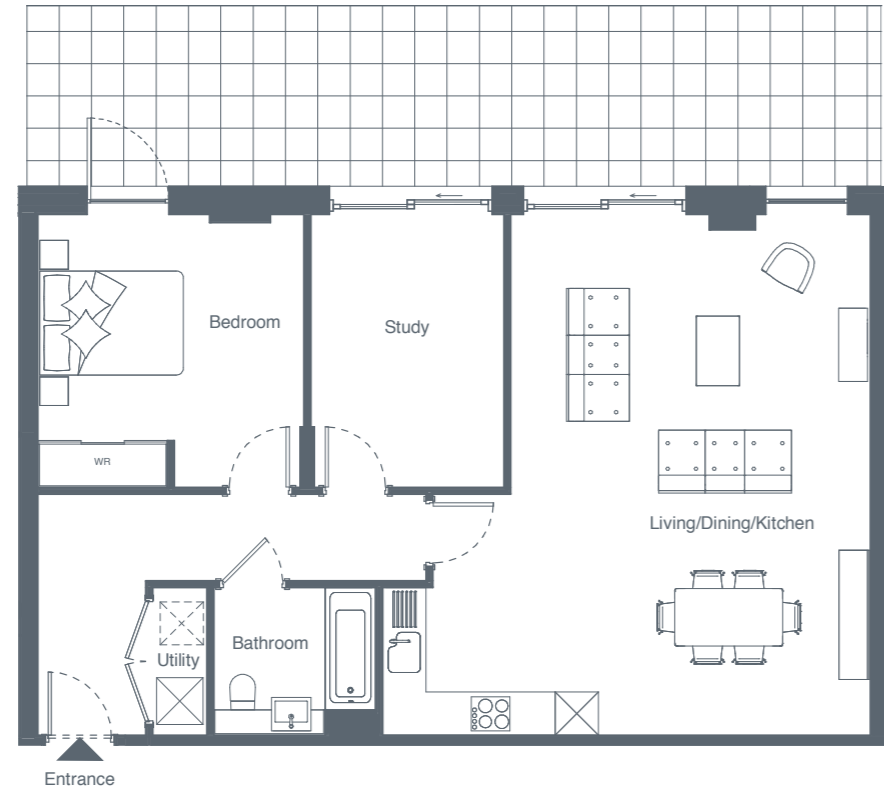


CAR PARK PLAN



LOWER GROUND FLOOR

APARTMENT
AL04

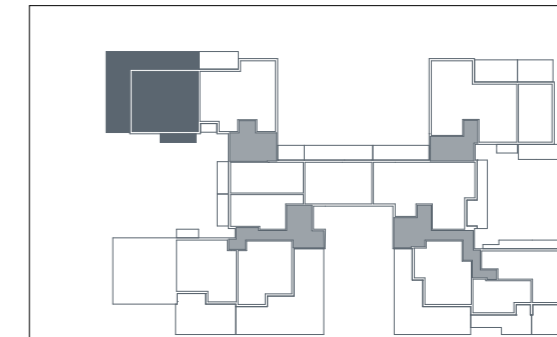
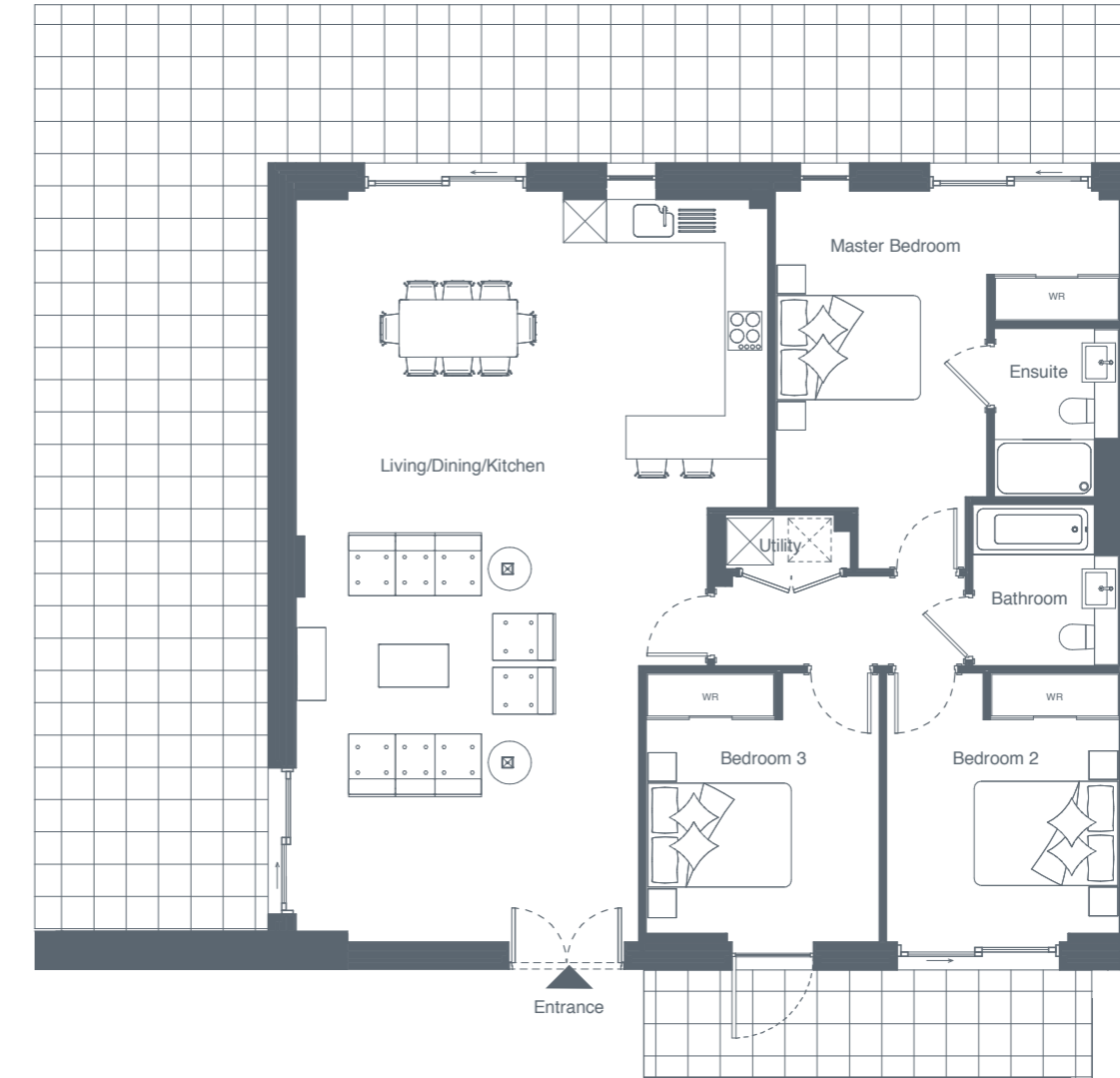


1 BEDROOM			
LOWER GROUND FLOOR	M	FT	
Liv. / Kitch. / Dining	6.8 x 7.2	22.3 x 23.6	
Master bedroom	3.7 x 3.8	12.1 x 12.5	
Bedroom 2	2.7 x 3.8	8.9 x 12.5	
Bathroom	2.3 x 2.1	7.5 x 6.9	
Terrace	11.8 x 2.5	38.7 x 8.2	
TOTAL INTERNAL AREA	83.98M²	903.95FT²	



LOWER GROUND FLOOR

APARTMENT
BLO2



3 BEDROOM		
LOWER GROUND FLOOR	M	FT
Liv. / Kitch. / Dining	6.6 x 10.5	21.6 x 34.4
Master Bedroom	2.9 x 5.3	9.5 x 17.3
Bedroom 2	3.2 x 3.7	10.5 x 12.3
Bedroom 3	3.2 x 3.7	10.5 x 12.3
Bathroom	2.1 x 2.3	6.9 x 7.5
Ensuite	1.8 x 2.4	5.9 x 7.8
Terrace 1	4.1 x 14.0	13.4 x 45.9
Terrace 2	6.2 x 1.5	20.3 x 5.0
TOTAL INTERNAL AREA	120.11M²	1292.85FT²



LOWER GROUND FLOOR

APARTMENT
BL03



2 BEDROOM			
LOWER GROUND FLOOR	M	FT	
Liv. / Kitch. / Dining	9.7 x 7.8	32.0 x 25.6	
Master Bedroom	6.1 x 2.9	19.9 x 9.5	
Bedroom 2	4.4 x 2.5	14.4 x 8.2	
Study	3.2 x 2.5	10.4 x 8.2	
Bathroom	2.1 x 2.3	6.9 x 7.5	
Ensuite	1.8 x 2.4	5.9 x 7.8	
Storage	1.7 x 1.4	5.7 x 4.5	
Terrace 1	2.8 x 2.2	9.3 x 7.2	
Terrace 2	6.8 x 3.0	22.3 x 9.8	
TOTAL INTERNAL AREA	135.22M²	1455.49FT²	



LOWER GROUND FLOOR

APARTMENT
CL01

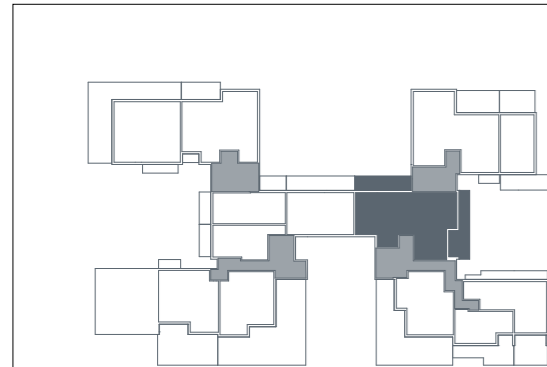


3 BEDROOM			
LOWER GROUND FLOOR	M	FT	
Liv. / Kitch. / Dining	7.1 x 12.7	23.3 x 41.6	
Master Bedroom	6.5 x 3.8	21.7 x 12.6	
Bedroom 2	4.1 x 4.8	13.4 x 15.8	
Bedroom 3	3.4 x 4.0	11.3 x 13.1	
Bathroom	2.3 x 2.1	7.5 x 6.9	
Ensuite 1	1.8 x 2.4	5.9 x 7.9	
Ensuite 2	1.8 x 2.4	5.9 x 7.9	
Storage	2.0 x 0.7	6.7 x 2.3	
Terrace 1	7.4 x 3.7	24.3 x 12.1	
Terrace 2	3.6 x 1.6	11.9 x 5.1	
TOTAL INTERNAL AREA	159.30M²	1714.60FT²	



LOWER GROUND FLOOR

APARTMENT
DL01

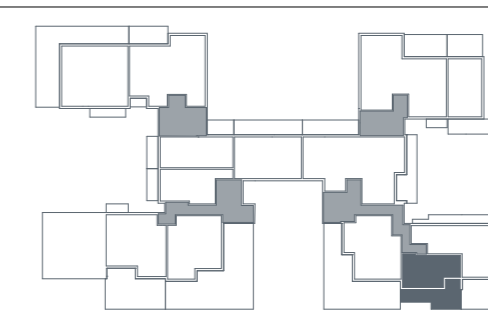
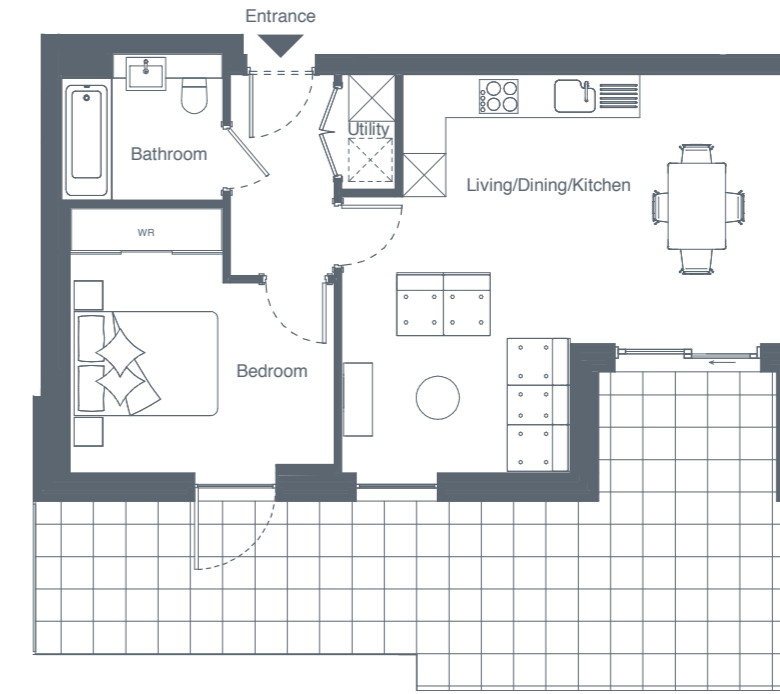


2 BEDROOM			
LOWER GROUND FLOOR	M	FT	
Liv. / Kitch. / Dining	6.7 x 11.7	22.0 x 38.4	
Master Bedroom	3.6 x 3.8	11.8 x 12.5	
Bedroom 2	3.7 x 5.9	12.2 x 19.5	
Study	3.3 x 5.9	10.9 x 19.5	
Bathroom	2.3 x 2.1	7.5 x 6.9	
Ensuite 1	1.6 x 2.3	5.4 x 7.5	
Ensuite 2	2.4 x 1.8	7.9 x 5.9	
Storage	1.3 x 2.0	4.2 x 6.7	
Terrace 1	3.5 x 11.4	11.4 x 37.3	
Terrace 2	9.9 x 2.3	32.6 x 7.4	
TOTAL INTERNAL AREA	157.60M²	1696.30FT²	



LOWER GROUND FLOOR

APARTMENT
DL03

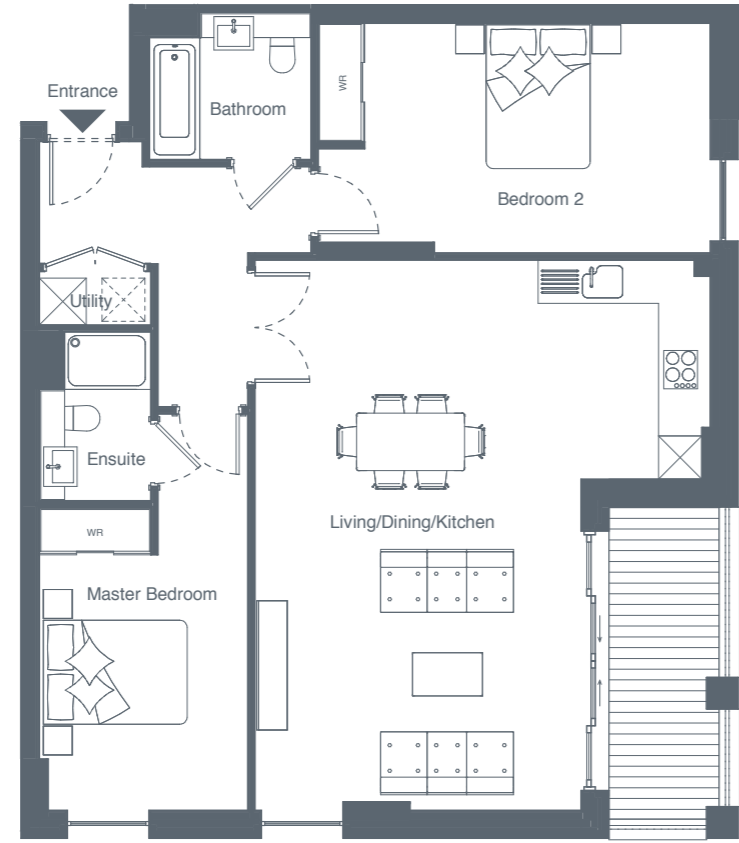


1 BEDROOM		
LOWER GROUND FLOOR	M	FT
Liv. / Kitch. / Dining	6.1 x 5.5	20.2 x 18.2
Bedroom	3.7 x 3.8	12.2 x 12.4
Bathroom	2.3 x 2.1	7.5 x 6.9
Terrace	10.5 x 5.0	34.4 x 16.4
TOTAL INTERNAL AREA	51.00M²	548.90FT²



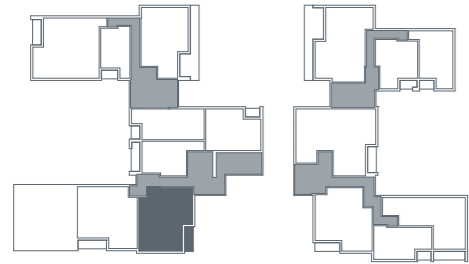
RAISED GROUND FLOOR

APARTMENT
AU01



RAISED GROUND FLOOR

APARTMENT
AU02



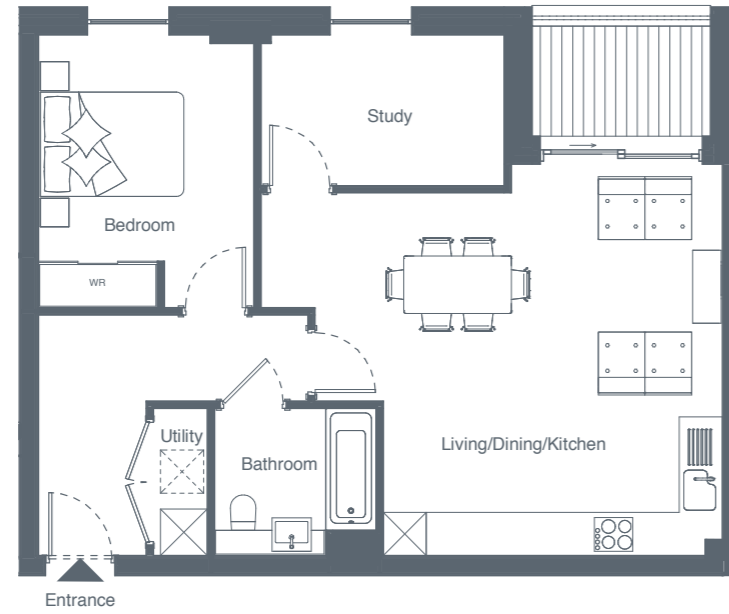
2 BEDROOM			
RAISED GROUND FLOOR	M	FT	
Liv. / Kitch. / Dining	6.3 x 7.7	20.7 x 25.3	
Master Bedroom	2.9 x 6.4	9.5 x 21.0	
Bedroom 2	5.5 x 3.2	17.9 x 10.5	
Bathroom	2.3 x 2.1	7.5 x 6.9	
Ensuite	1.5 x 2.4	5.0 x 8.0	
Balcony	1.5 x 4.4	5.0 x 14.4	
TOTAL INTERNAL AREA	91.87M²	988.88FT²	



2 BEDROOM		
RAISED GROUND FLOOR	M	FT
Liv. / Kitch. / Dining	10.4 x 6.4	34.0 x 21.0
Master Bedroom	4.7 x 4.1	15.4 x 13.4
Bedroom 2	4.0 x 3.0	13.1 x 9.8
Bathroom	2.1 x 2.3	6.9 x 7.5
Ensuite	2.3 x 1.5	7.5 x 5.0
Balcony	5.0 x 1.5	16.3 x 5.0
TOTAL INTERNAL AREA	98.10M²	1056.90FT²

RAISED GROUND FLOOR

APARTMENT
AU04

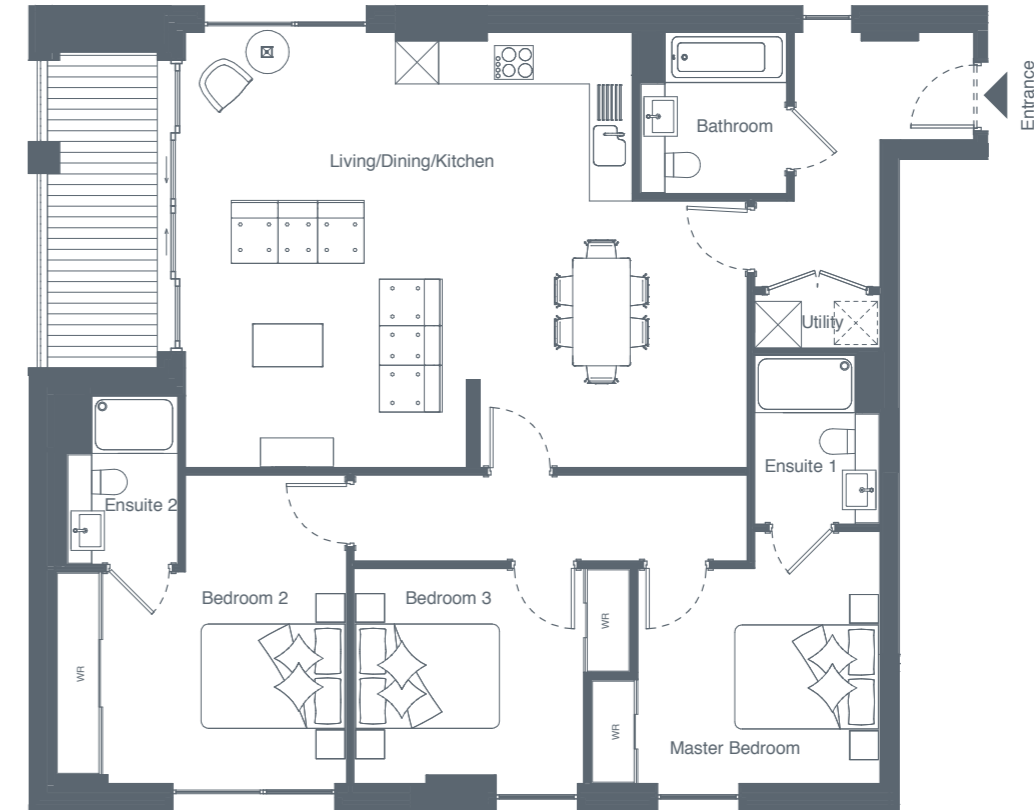


1 BEDROOM			
RAISED GROUND FLOOR	M	FT	
Liv. / Kitch. / Dining	6.4 x 5.4	21.1 x 17.7	
Bedroom	3.0 x 3.8	9.8 x 12.5	
Study	3.4 x 2.1	11.1 x 6.9	
Bathroom	2.3 x 2.1	7.5 x 6.9	
Balcony	2.5 x 1.5	8.2 x 5.0	
TOTAL INTERNAL AREA	63.47M²	683.18FT²	



RAISED GROUND FLOOR

APARTMENT
BU02

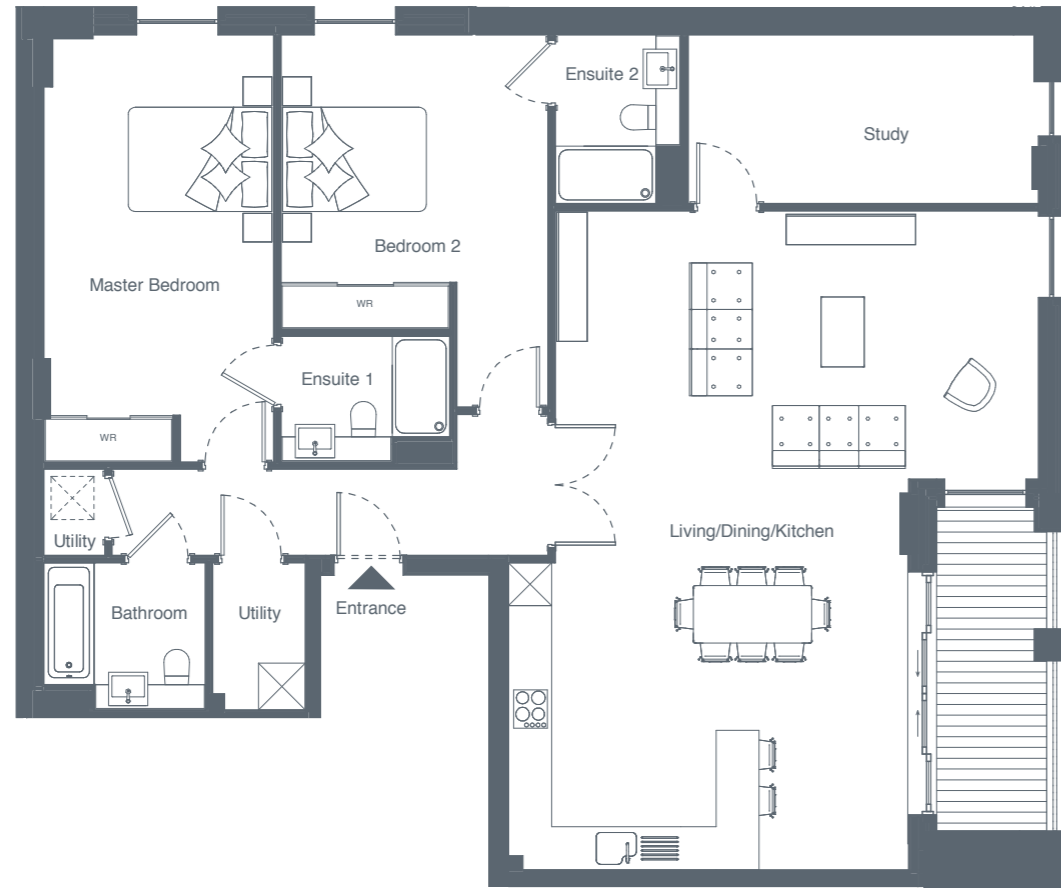


3 BEDROOM		
RAISED GROUND FLOOR	M	FT
Liv. / Kitch. / Dining	7.8 x 6.1	25.7 x 20.0
Master Bedroom	4.0 x 3.5	13.2 x 11.5
Bedroom 2	4.0 x 4.3	13.3 x 14.1
Bedroom 3	3.8 x 3.0	12.4 x 9.9
Bathroom	2.1 x 2.3	6.9 x 7.5
Ensuite 1	1.8 x 2.3	5.9 x 7.5
Ensuite 2	1.7 x 2.4	5.5 x 7.8
Balcony	1.5 x 4.4	5.0 x 14.4
TOTAL INTERNAL AREA	112.90M²	1215.20FT²



RAISED GROUND FLOOR

APARTMENT
DU01

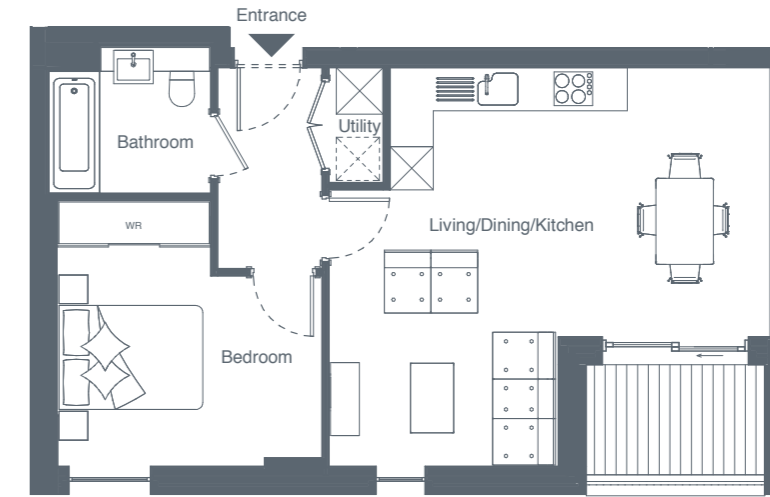


2 BEDROOM			
RAISED GROUND FLOOR	M	FT	
Liv. / Kitch. / Dining	7.4 x 9.2	24.2 x 30.1	
Master Bedroom	3.2 x 5.9	10.5 x 19.4	
Bedroom 2	3.7 x 5.2	12.2 x 17.0	
Study	4.8 x 2.4	15.8 x 7.7	
Bathroom	2.3 x 2.1	7.5 x 6.9	
Ensuite 1	2.4 x 1.8	7.7 x 5.7	
Ensuite 2	1.7 x 2.4	5.7 x 7.7	
Balcony	1.5 x 4.5	5.0 x 14.8	
TOTAL INTERNAL AREA	130.60M²	1405.70FT²	



RAISED GROUND FLOOR

APARTMENT
DU03

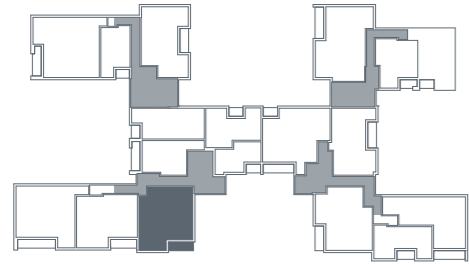
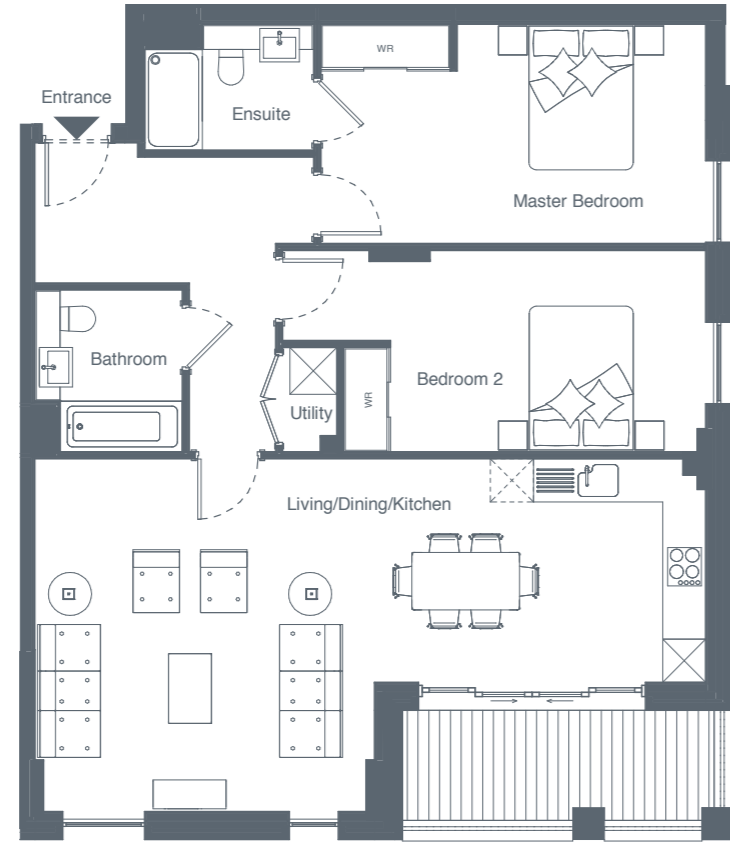


1 BEDROOM		
RAISED GROUND FLOOR	M	FT
Liv. / Kitch. / Dining	6.1 x 5.5	20.0 x 18.0
Bedroom	3.7 x 3.8	12.1 x 12.5
Bathroom	2.1 x 2.3	6.9 x 7.5
Balcony	2.5 x 1.5	8.2 x 5.0
TOTAL INTERNAL AREA	51.00M²	548.90FT²



FIRST FLOOR

APARTMENT
A101

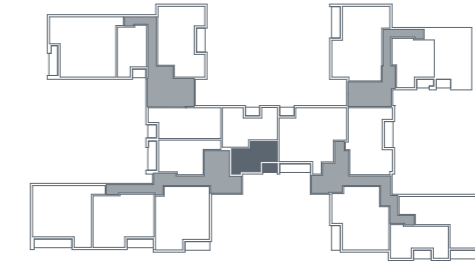


2 BEDROOM			
FIRST FLOOR	M	FT	
Liv. / Kitch. / Dining	9.3 x 4.9	30.6 x 16.1	
Master Bedroom	5.4 x 3.0	17.6 x 10.0	
Bedroom 2	5.9 x 2.8	19.3 x 9.2	
Bathroom	2.1 x 2.3	6.9 x 7.5	
Ensuite	2.2 x 1.8	7.2 x 5.9	
Balcony	4.4 x 1.5	14.5 x 5.0	
TOTAL INTERNAL AREA	91.53M²	985.22FT²	



FIRST FLOOR

APARTMENT
A106



STUDIO / 1 BEDROOM		
FIRST FLOOR	M	FT
Liv. / Kitch. / Dining / Bedroom	6.2 x 5.3	20.3 x 17.3
Bathroom	2.3 x 2.1	7.5 x 6.9
Balcony	2.5 x 1.5	8.2 x 5.0
TOTAL INTERNAL AREA	33.30M²	358.43FT²



FIRST FLOOR

APARTMENT
B102

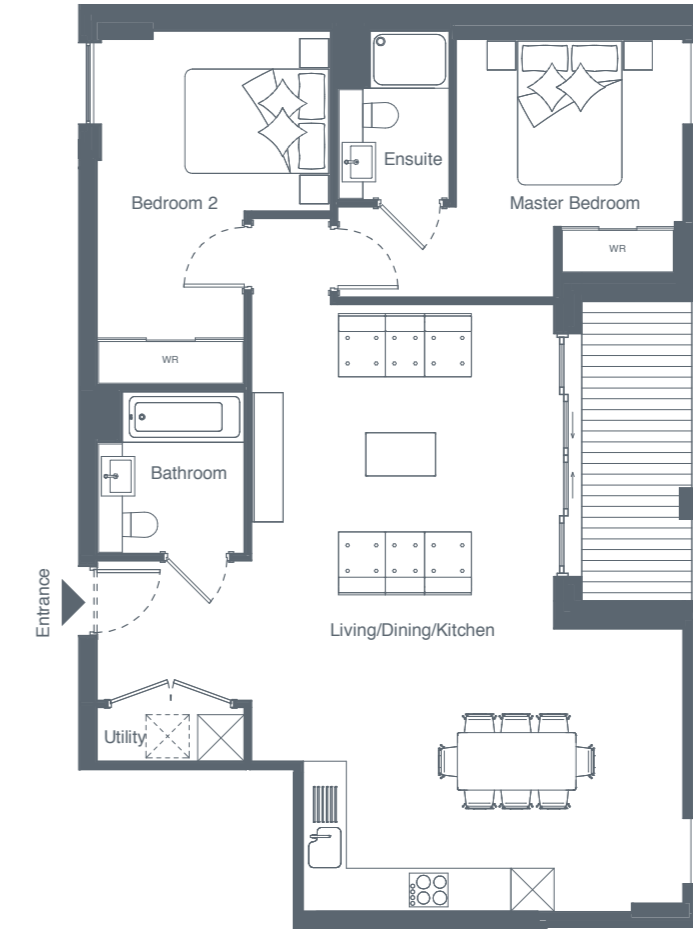


3 BEDROOM			
FIRST FLOOR	M	FT	
Liv. / Kitch. / Dining	6.4 x 7.4	20.9 x 24.2	
Master Bedroom	3.2 x 5.9	10.5 x 19.5	
Bedroom 2	3.9 x 3.0	12.8 x 9.8	
Bedroom 3	4.0 x 4.5	13.2 x 14.9	
Bathroom	2.1 x 2.3	6.9 x 7.5	
Ensuite	1.8 x 2.4	5.9 x 8.0	
Balcony	1.5 x 5.3	5.0 x 17.3	
TOTAL INTERNAL AREA	111.60M²	1201.20FT²	



FIRST FLOOR

APARTMENT
B104

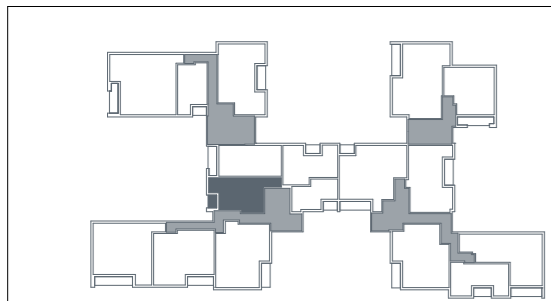


2 BEDROOM		
FIRST FLOOR	M	FT
Liv. / Kitch. / Dining	8.2 x 9.6	26.8 x 31.5
Master Bedroom	4.8 x 3.7	15.8 x 12.1
Bedroom 2	3.2 x 4.8	10.5 x 15.7
Bathroom	2.1 x 2.3	6.9 x 7.5
Ensuite	1.5 x 2.4	5.0 x 7.9
Balcony	1.5 x 4.2	5.0 x 13.7
TOTAL INTERNAL AREA	84.60M²	910.60FT²



SECOND FLOOR

APARTMENT
A204

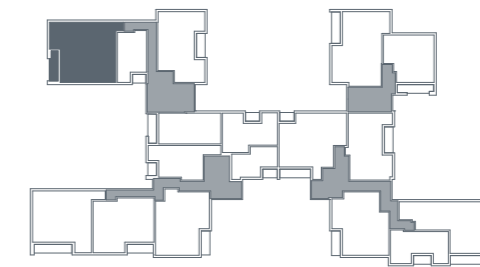


STUDIO / 1 BEDROOM			
SECOND FLOOR	M	FT	
Liv. / Kitch. / Dining / Bedroom	9.5 x 6.0	31.2 x 19.6	
Bathroom	2.1 x 2.3	6.9 x 7.5	
Balcony	1.5 x 2.3	5.0 x 7.5	
TOTAL INTERNAL AREA	53.70M²	578.02FT²	



SECOND FLOOR

APARTMENT
B202



3 BEDROOM		
SECOND FLOOR	M	FT
Liv. / Kitch. / Dining	6.4 x 7.4	20.9 x 24.2
Master Bedroom	3.2 x 5.9	10.5 x 19.3
Bedroom 2	3.9 x 3.0	12.8 x 9.8
Bedroom 3	4.0 x 4.5	13.2 x 14.9
Bathroom	2.1 x 2.3	6.9 x 7.5
Ensuite	1.8 x 2.4	5.9 x 7.8
Balcony	1.5 x 5.2	5.0 x 17.0
TOTAL INTERNAL AREA	111.60M²	1201.20FT²



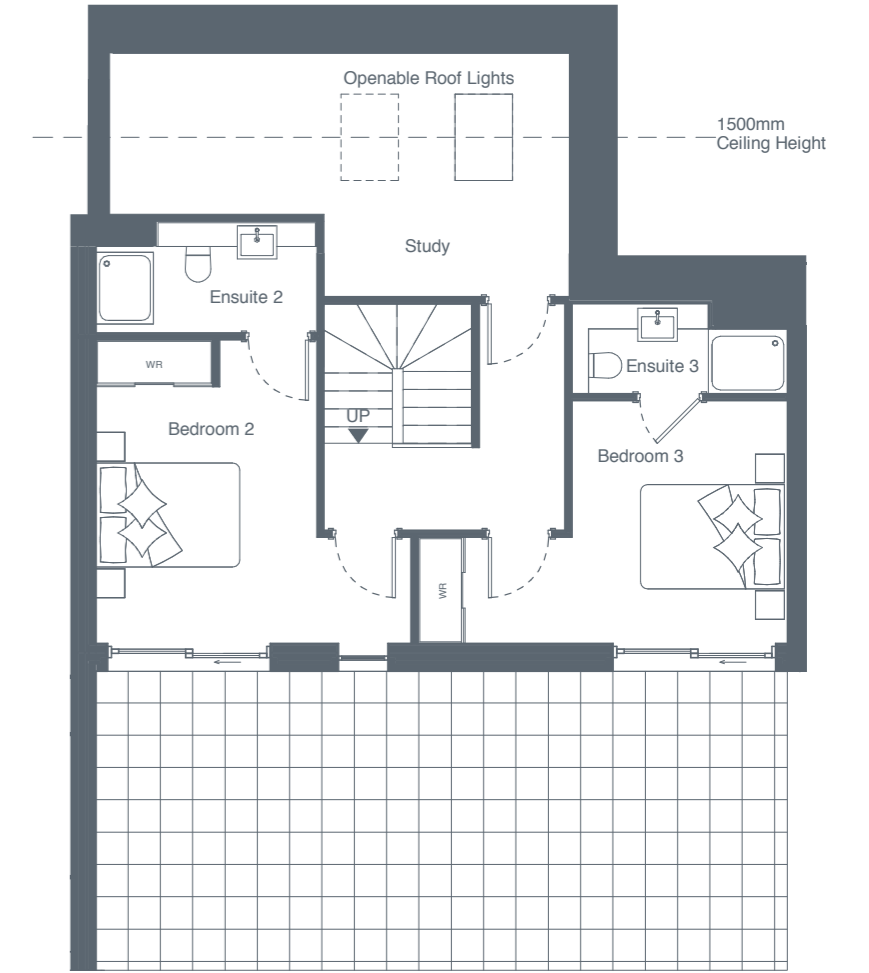
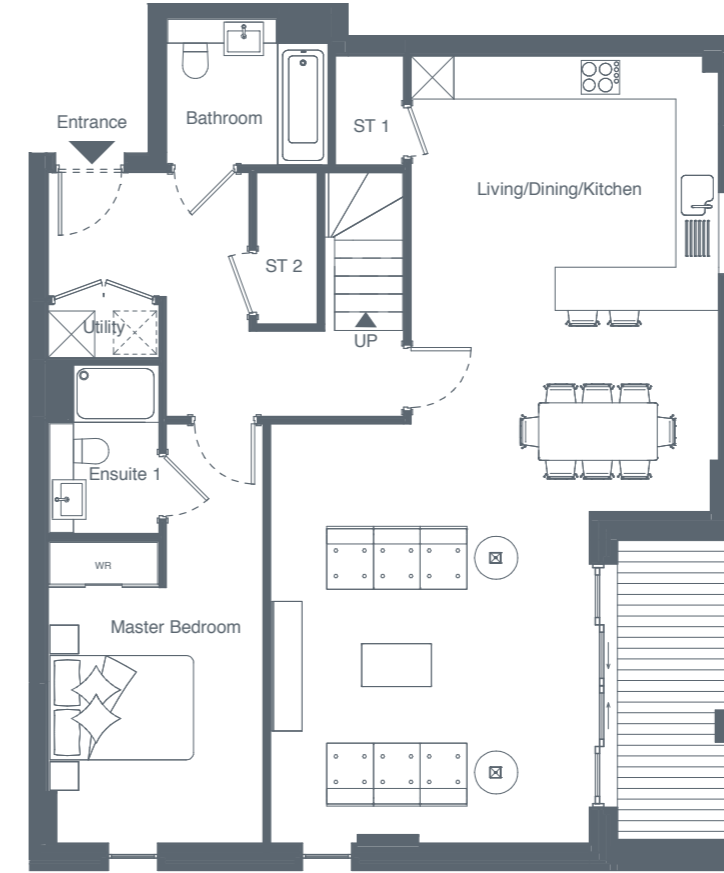
SECOND FLOOR

APARTMENT
C201



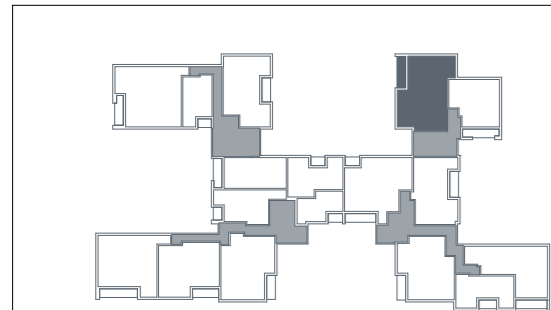
SECOND & THIRD FLOOR

APARTMENT
A201

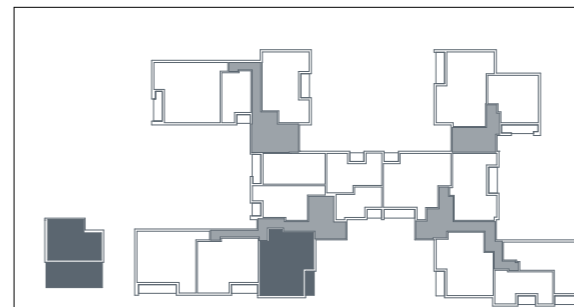


SECOND FLOOR

THIRD FLOOR



3 BEDROOM			
SECOND FLOOR	M	FT	
Liv. / Kitch. / Dining	8.6 x 6.8	28.2 x 22.3	
Master Bedroom	3.5 x 3.6	11.5 x 11.8	
Bedroom 2	3.0 x 3.6	9.8 x 11.8	
Bedroom 3	3.3 x 2.8	10.8 x 9.2	
Bathroom	2.1 x 2.3	6.9 x 7.5	
Ensuite	1.6 x 2.4	5.2 x 7.9	
Balcony	1.5 x 5.4	5.0 x 17.7	
TOTAL INTERNAL AREA	103.80M²	1117.20FT²	



3 BEDROOM							
SECOND FLOOR	M	FT		THIRD FLOOR	M	FT	
Liv. / Kitch. / Dining	6.2 x 11.0	20.4 x 36.0		Bedroom 2	4.1 x 4.2	13.5 x 13.8	
Master Bedroom	3.0 x 5.8	9.8 x 19.0		Bedroom 3	5.1 x 3.4	16.7 x 11.1	
Bathroom	2.3 x 2.1	7.5 x 6.9		Study	6.4 x 3.3	21.0 x 10.8	
Ensuite 1	1.5 x 2.3	5.1 x 7.5		Ensuite 2	2.8 x 1.5	9.2 x 5.0	
Storage 1	0.9 x 1.5	3.0 x 5.0		Ensuite 3	3.0 x 1.2	9.8 x 4.1	
Storage 2	0.9 x 2.1	3.0 x 6.9		Terrace	9.6 x 4.2	31.6 x 13.7	
Balcony	1.5 x 4.2	5.0 x 13.8		TOTAL INTERNAL AREA	147.00M²	1582.29FT²	



APARTMENT
A202



SECOND FLOOR

THIRD FLOOR

APARTMENT
A203



SECOND FLOOR

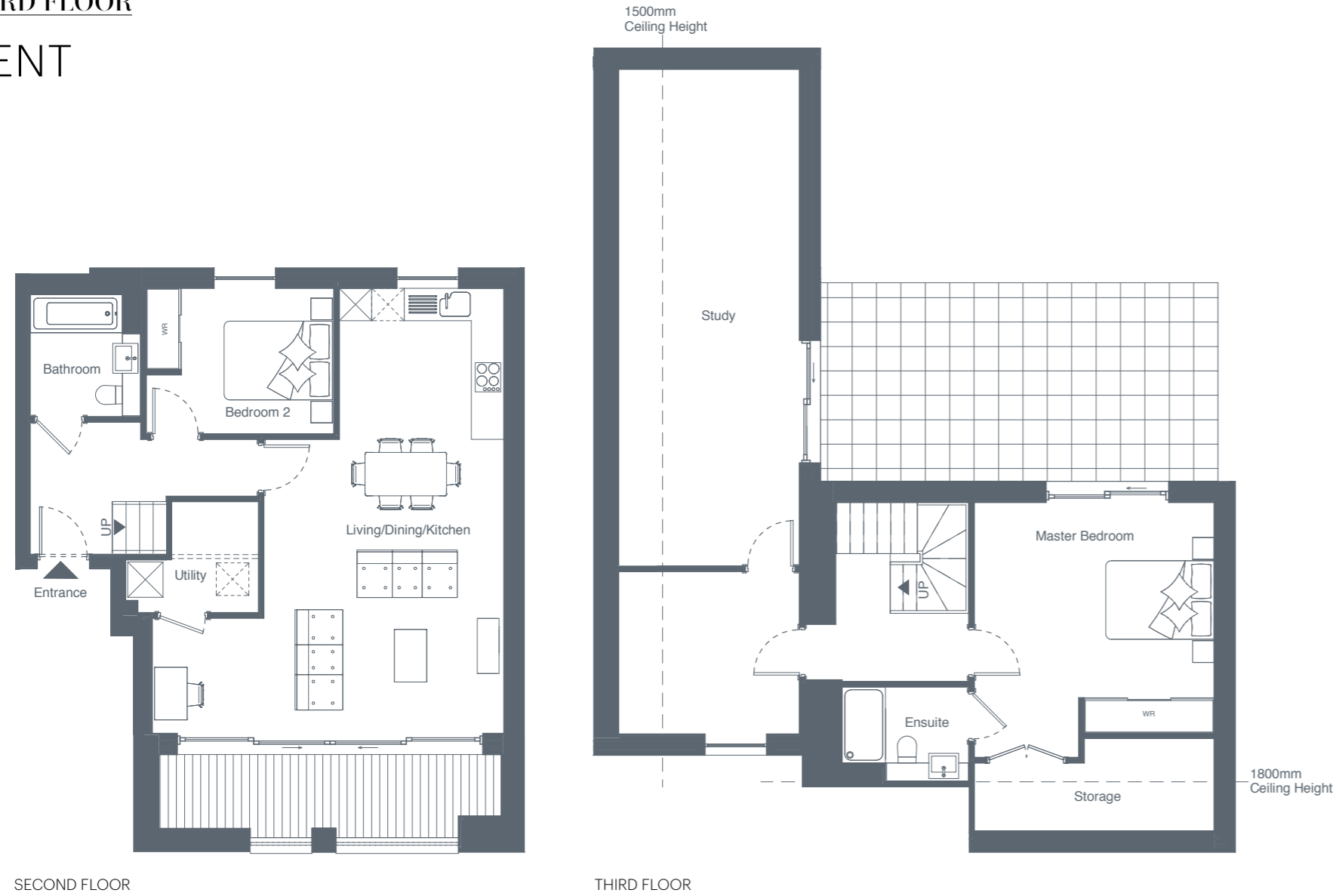
THIRD FLOOR

3 BEDROOM							
SECOND FLOOR			M	FT	THIRD FLOOR		
Liv. / Kitch. / Dining	7.5 x 9.5	24.7 x 31.1			Master Bedroom	5.2 x 5.5	17.1 x 18.1
Bedroom 3	2.9 x 5.5	9.5 x 18.1			Bedroom 2	5.2 x 5.7	17.1 x 18.7
Bathroom	2.3 x 2.1	7.5 x 6.9			Study	3.3 x 4.5	10.7 x 14.7
Ensuite 3	1.6 x 2.3	5.2 x 7.5			Ensuite 1	3.3 x 3.6	10.7 x 11.8
Balcony	4.5 x 1.5	14.8 x 5.0			Ensuite 2	1.8 x 2.3	5.9 x 7.5
					Storage	1.4 x 2.3	4.6 x 7.5
					Terrace 1	2.0 x 3.5	6.6 x 11.5
					Terrace 2	4.1 x 3.6	13.3 x 11.8
TOTAL INTERNAL AREA			175.63M²	1890.46FT²			

3 BEDROOM							
SECOND FLOOR			M	FT	THIRD FLOOR		
Liv. / Kitch. / Dining	6.9 x 8.9	22.6 x 29.2			Master Bedroom	5.1 x 6.6	16.7 x 21.7
Bedroom 2	3.2 x 6.7	10.5 x 22.0			Bedroom 3	3.0 x 4.4	9.9 x 14.4
Bathroom 1	2.1 x 2.3	6.9 x 7.5			Study	3.0 x 2.9	9.9 x 9.4
Ensuite 1	1.8 x 2.3	5.9 x 7.5			Bathroom 2	2.1 x 2.3	6.9 x 7.5
Storage 1	1.8 x 1.2	5.9 x 3.9			Ensuite 2	2.3 x 2.4	7.5 x 7.9
Balcony	6.5 x 1.5	21.4 x 5.0			Storage 2	7.2 x 1.4	23.6 x 4.6
					Terrace	4.0 x 7.4	13.1 x 24.2
TOTAL INTERNAL AREA			171.58M²	1846.80FT²			

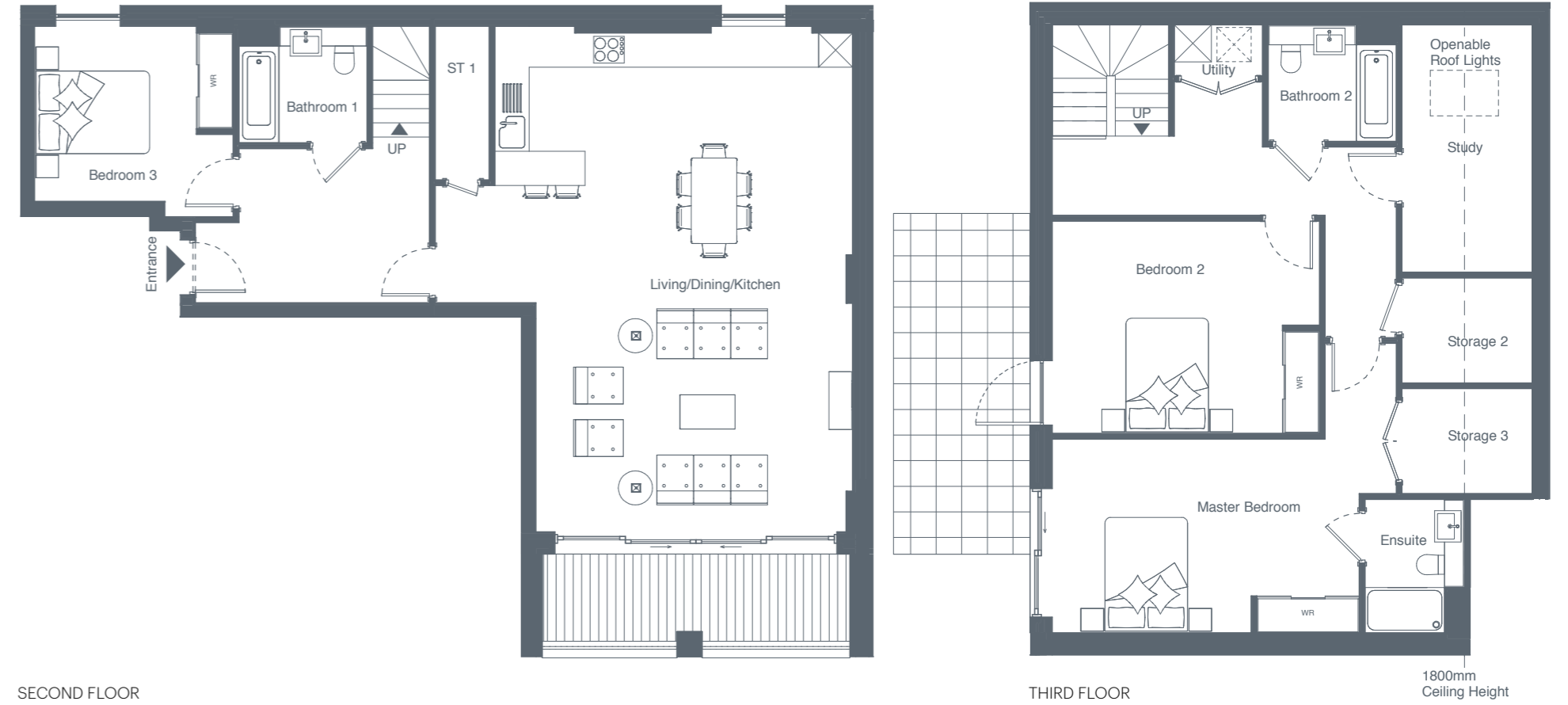
SECOND & THIRD FLOOR

APARTMENT
C202



SECOND & THIRD FLOOR

APARTMENT
D202



	2 BEDROOM					
	SECOND FLOOR			THIRD FLOOR		
Liv. / Kitch. / Dining	M	FT	Master Bedroom	M	FT	
Bedroom 2	6.5 x 8.2	20.7 x 26.9	Study	4.4 x 4.7	14.5 x 15.4	
Bathroom	3.5 x 2.7	11.4 x 8.8	Ensuite	2.5 x 9.2	8.2 x 30.1	
Balcony	2.1 x 2.3	6.9 x 7.5	Storage	2.3 x 1.7	7.5 x 5.7	
	6.3 x 1.5	21.3 x 5.0	Terrace	4.4 x 1.7	14.5 x 5.7	
			TOTAL INTERNAL AREA	134.24M²	1444.94FT²	

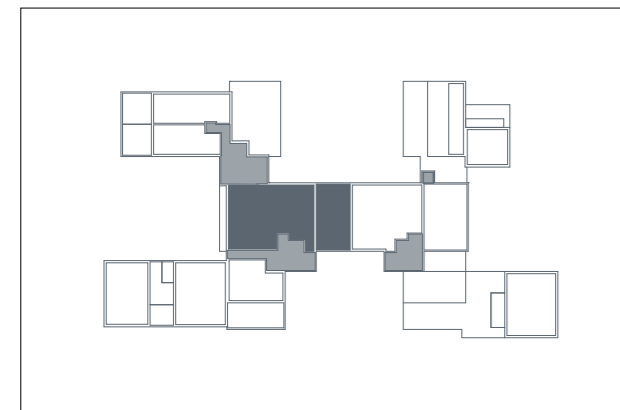
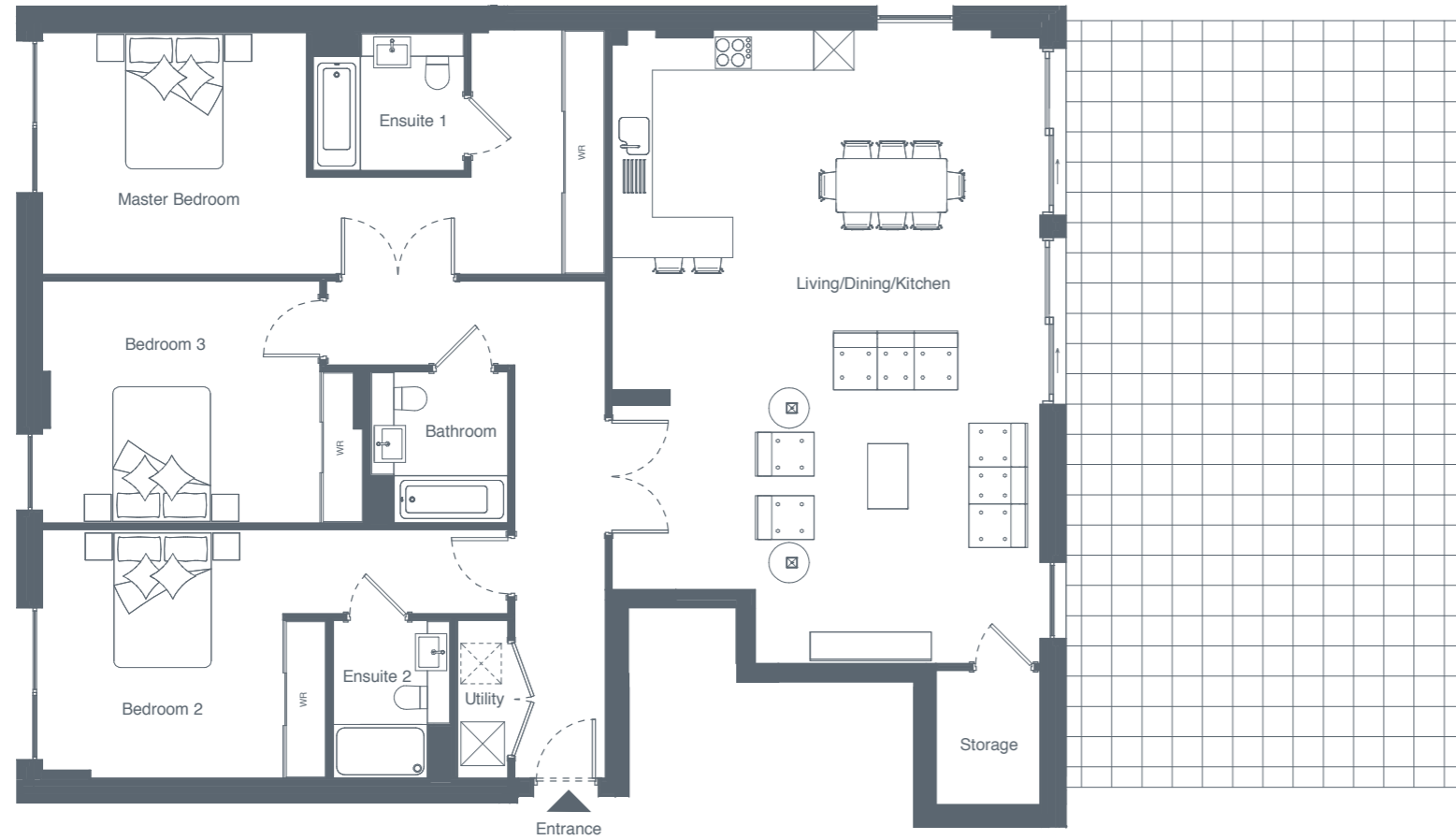


	3 BEDROOM					
	SECOND FLOOR			THIRD FLOOR		
Liv. / Kitch. / Dining	M	FT	Master Bedroom	M	FT	
Bedroom 3	7.3 x 8.9	24.0 x 29.2	Bedroom 2	6.0 x 5.1	19.8 x 16.7	
Bathroom 1	3.5 x 3.1	11.5 x 10.1	Study	4.7 x 3.7	15.4 x 12.2	
Storage 1	2.3 x 2.1	7.5 x 6.9	Bathroom 2	2.3 x 4.3	7.5 x 14.1	
Balcony	1.0 x 2.7	3.3 x 8.9	Ensuite	2.3 x 2.1	7.5 x 6.9	
	5.4 x 1.5	17.7 x 1.5	Storage 2	1.8 x 2.3	5.9 x 7.5	
			Storage 3	2.3 x 1.8	7.5 x 5.9	
			Terrace	2.3 x 1.8	7.5 x 5.9	
			TOTAL INTERNAL AREA	173.57M²	1868.29FT²	



THIRD FLOOR

APARTMENT
A301

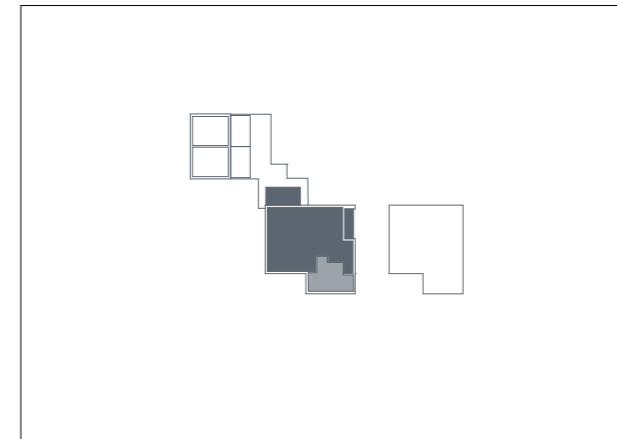


3 BEDROOM			
THIRD FLOOR	M	FT	
Liv. / Kitch. / Dining	6.4 x 9.4	20.9 x 30.9	
Master Bedroom	8.4 x 3.6	27.5 x 11.8	
Bedroom 2	6.9 x 3.7	22.6 x 12.1	
Bedroom 3	4.8 x 3.6	15.7 x 11.8	
Bathroom	2.1 x 2.3	6.9 x 7.5	
Ensuite 1	2.3 x 2.1	7.5 x 6.9	
Ensuite 2	1.8 x 2.3	5.9 x 7.5	
Storage	1.5 x 2.0	5.0 x 6.6	
Terrace	5.9 x 11.5	19.4 x 37.7	
TOTAL INTERNAL AREA	154.90M²	1667.32FT²	



FOURTH FLOOR

APARTMENT
A401



3 BEDROOM			
FOURTH FLOOR	M	FT	
Liv. / Kitch. / Dining	13.0 x 5.7	42.6 x 18.7	
Master Bedroom	5.5 x 3.7	18.1 x 12.1	
Bedroom 2	4.2 x 3.6	13.9 x 11.7	
Bedroom 3	5.5 x 3.6	18.0 x 11.8	
Bathroom	2.1 x 2.3	6.9 x 7.5	
Ensuite 1	1.8 x 2.3	5.9 x 7.5	
Ensuite 2	1.5 x 2.3	5.0 x 7.5	
Storage	2.0 x 0.9	6.7 x 3.0	
Balcony	1.5 x 5.2	5.0 x 17.0	
Terrace	5.8 x 3.0	19.1 x 9.7	
TOTAL INTERNAL AREA	144.67M²	1557.21FT²	





Regal London is a privately held property development firm established in 1998.

We believe in creating some of London's most beautiful and inspiring places in which to live and work. We have a driving passion for unique design, delivering high quality, award-winning, residential-led mixed use schemes.

Our in-house design and construction teams ensure exacting standards are met throughout the whole design and build process. The end result is exemplary standards of workmanship. We also engage with a range of traditional and innovative methods of construction to suit each unique development in our portfolio. We have over 475,000 sqft of high-quality commercial space and 3,000 residential units completed and underway, all of which have Regal London's hallmark of quality, with superior specifications and customer service.

We have over two decades of experience in arguably the most exciting city in the world.

We are Regal London.

For more information, please visit regal-london.co.uk



PLANNING ARCHITECTS FOR THE AVENUE

Hopkins Architects



LONDON 2012 VELODROME AND VELOPARK



MOUND STAND, LORD'S CRICKET GROUND

Hopkins Architects have been at the forefront of British architecture since their practice was established in 1976.

Over the years they have been instrumental in the design of many schemes in and around London. A large number of these projects are award winning buildings of all scales, sectors and scopes.

Over three decades the core architectural, environmental and social values that underpin their work have remained constant and they have created a diverse portfolio of projects for clients.

Their track record for delivering buildings of the highest architectural excellence, combining innovative design, craft, and environmental responsibility, has been the key to their continuing success.

Their work has been widely acclaimed by both architects and the public alike and their projects have been successful at most major architectural awards.



regal-london.co.uk

 @Regal_London  @RegalLondonLtd  Regal_London

Regal London/Regal Brondesbury Park Ltd give notice that this brochure is produced for the general promotion of the properties at The Avenue only and for no other purpose. Information and particulars are set out as a general outline for the guidance of intending purchasers and do not form part of an offer, invitation to treat or contract. All photography of The Avenue is for guidance purposes only. These particulars have been prepared in good faith to give an overview of the properties at The Avenue and are believed to be correct as at the date of publication, although accuracy cannot be guaranteed. Any intending purchasers cannot rely on them as statements or representation of fact.

Floorplans are intended to give a general indication of the proposed layout and provide approximate measurements only. Dimensions are not intended to be used for carpet sizes, appliance space or items of furniture. Total areas are provided as Gross Internal Area under the current RICS measuring practice. Design layout and specification may be subject to variation by Regal London/ Regal Brondesbury Park Ltd and/ or third parties and their respective advisors or agents. The name 'The Avenue' is for marketing purposes only and may not form part of the postal address. Regal London retains the copyright of material in this brochure and may change the content or format at any time.

M. Anderson, 02/2019, V2



