

EDUCATION IN REACH

YOUR GUIDE TO THE BEST SCHOOLS AND UNIVERSITIES IN LONDON



WELCOME

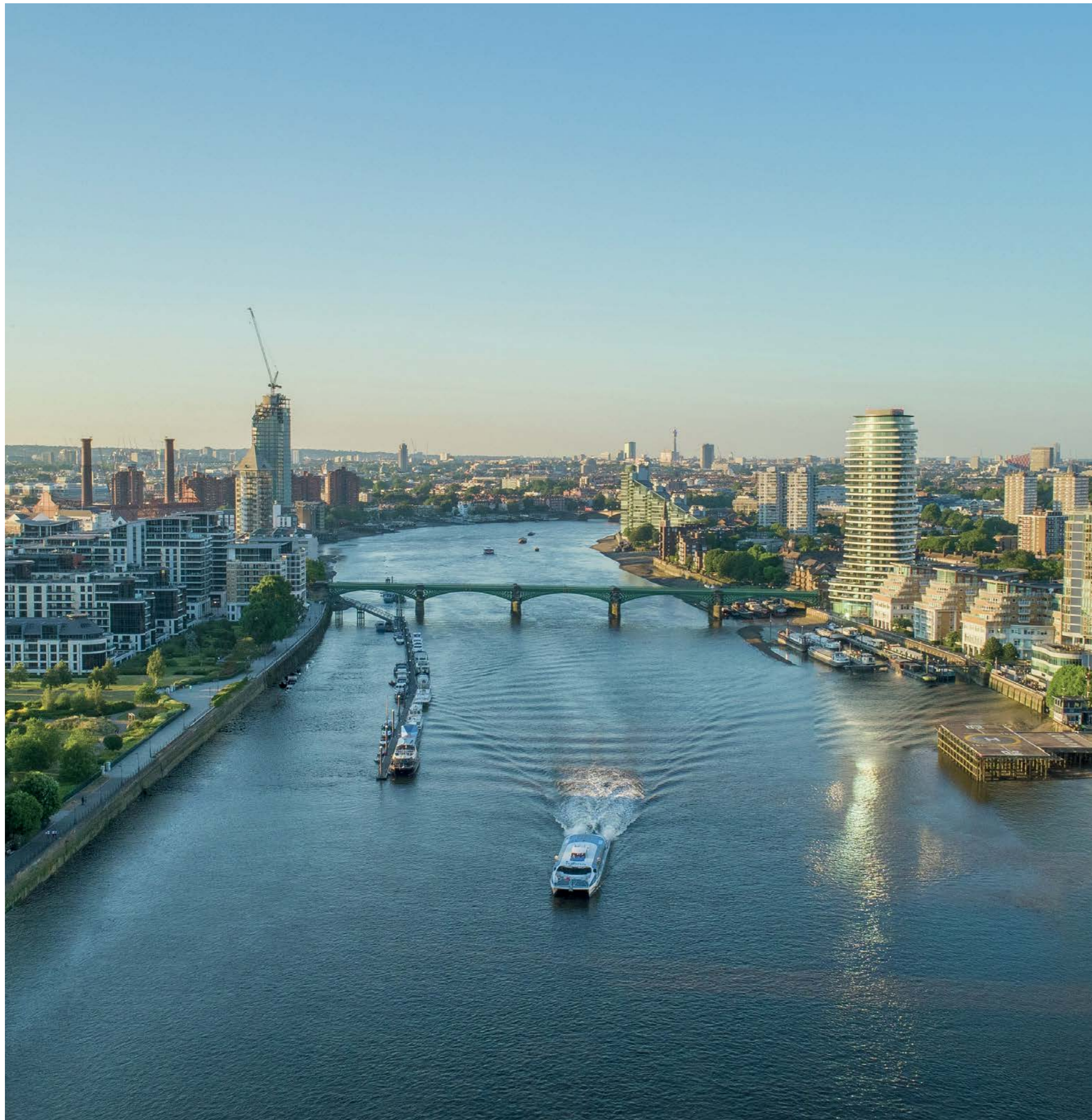
■ Nurseries, schools and universities are not in short supply in Chelsea and Fulham. With London being recognised as a leading global centre for higher education, St George developments in West London have easy access to the local area's best schools and the City's many prestigious universities, providing a sound investment for children and the future.

At primary level, schools like Thomas's Battersea and Kensington Prep School offer children a well-rounded education with Ofsted ratings of outstanding and excellent. Thomas's Battersea's most recent claim to fame is the arrival of Prince George as a student and with exceptional teaching staff and extensive facilities Thomas's has very quickly become a popular school for boys and girls aged between 4-13. Children tend to go on to equally prestigious schools like Eton, Harrow and Westminster.

The range of local secondary schools is also impressive. There's Godolphin & Latymer – a school praised as much for the niceness of their pupils as for their academic ability. St. Paul's Girls' School, meanwhile, is renowned for its musical department and academically, children perform highly with, on average, half the class feeding into Oxford and Cambridge and some of London's world renowned universities such as King's College and London School of Economics.

Chelsea Creek is not only a stunning place to live, but offers a complete lifestyle and a way into some of the best education London has to offer ■

**THE BEST
EDUCATION
LONDON HAS
TO OFFER**



CONTENTS

01 | Page 06

■ PRIMARY
SCHOOLS

02 | Page 10

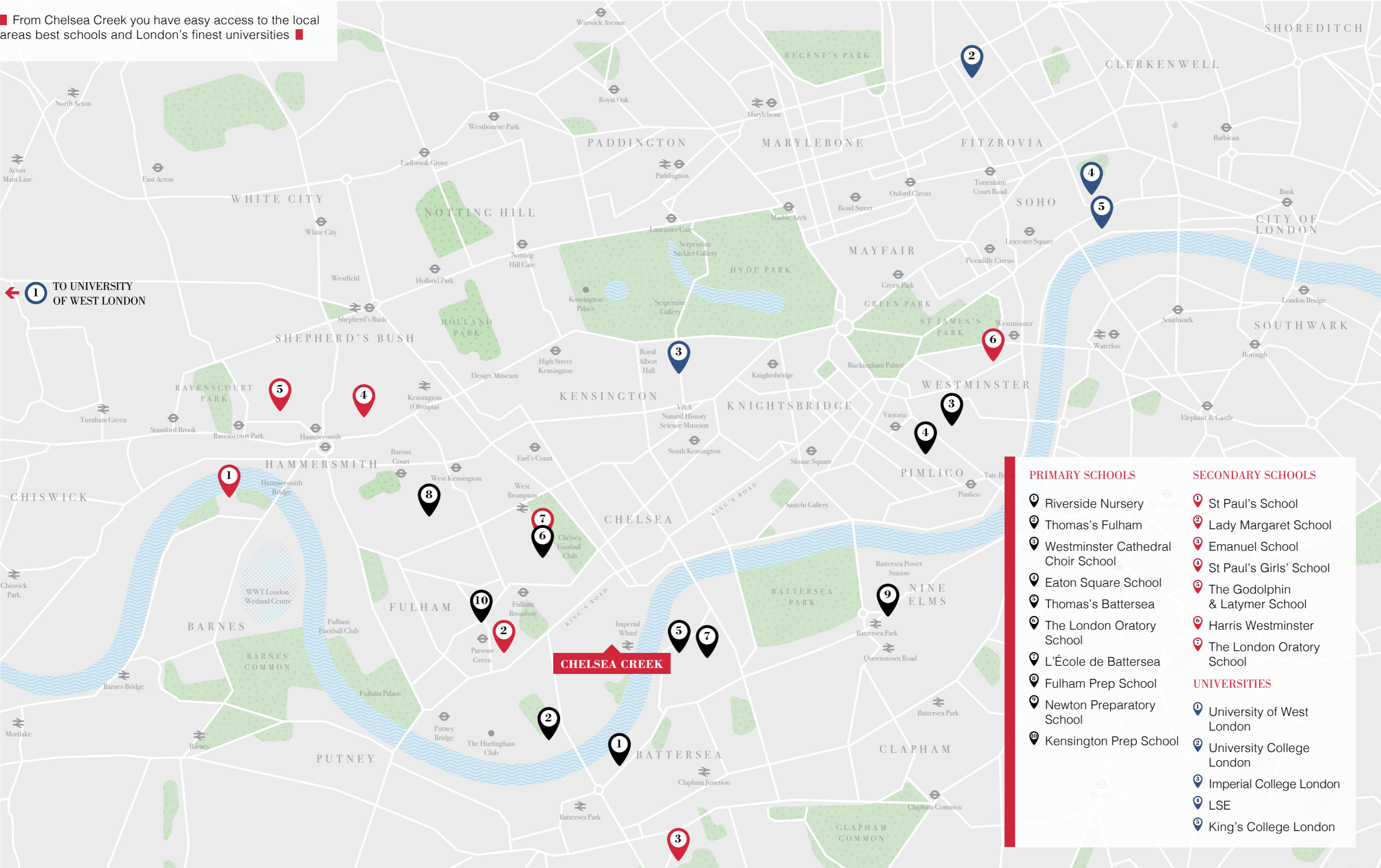
■ SECONDARY
SCHOOLS

03 | Page 14

■ UNIVERSITIES

EDUCATION IN REACH

From Chelsea Creek you have easy access to the local areas best schools and London's finest universities



PREP & PRIMARY

RIVERSIDE NURSERY

📍 Battersea Reach, Ensign House, Juniper Drive, Wandsworth SW18 1TA

- Boys and girls
- Ages: 3 months-5 years
- Term fees: Disclosed upon application
- Ofsted rating (2016): Outstanding

Overview

Riverside is a private nursery school that aims to empower the children in its care to make their own choices about how to learn and to pursue their natural curiosity.

What to expect

The learning rooms and baby suites are as stimulating and well-designed as you'd expect for a nursery that follows a Montessori ethos. Right down to the bookshelves built at kids' height! A calendar of events taking in everything from Easter Egg hunts in the large garden to animal visits from a local petting zoo make Riverside an exciting place for young ones.

How it performs

An 'Outstanding' grade from OFSTED, glowing feedback from parents and hearty recommendations from teachers at the primary schools that Riverside feeds, all point to a high performing nursery that helps shape well rounded little individuals ■

THOMAS'S FULHAM

📍 Hugon Road, SW6 3ES

- Boys and girls
- Ages: 4-13
- Term fees: £6,357
- Registration: 1st September three years before entry, when children are aged between one and two years old
- Ofsted rating (2018): Outstanding

Overview

As part of the Thomas's family, Thomas's Fulham upholds the same ethos of jolly friendliness and anti-clique kindness. It's a pretty, red-brick school in the heart

of SW6, proud of its close-knit, community feel.

What to expect

There is a sport to entice every budding Olympian from gymnastics and swimming to hockey. There's plenty for arty children too with music and drama high on the agenda — and part of the standard curriculum. Regular trips away (both locally and farther afield) help to foster a spirit of adventure.

How it performs

The teachers here present the curriculum in an exciting and innovative way — challenging children on a daily basis. The majority of pupils go on to attend top senior schools in London ■

WESTMINSTER CATHEDRAL CHOIR SCHOOL

📍 Ambrosden Avenue, SW1P 1QH

- Boys
- Ages: 4-13
- Term fees: £6,194; boarding (choristers only) £3,249
- Registration: Boys may be registered at any time from birth. The registration fee is £200
- Parents accepting a firm offer will be asked for a deposit of £2,000, refundable on their son's departure from the School
- ISI report (2015): Excellent

Overview

As the name would suggest, this school is big on music. The choir is exceptional and orchestral instruments are taught weekly. The inherent discipline present in music practice seeps into every other academic pursuit, too.

What to expect

The choir may be this school's calling card, but that doesn't mean it is weak in other areas. Not in the slightest. There is a vibrant array of extra-curricular activities — from

magic club to newspaper club — as well as a thriving sporting scene. While it is mostly a day school, the choristers can board, but places are competitive — just six a year.

How it performs

Unsurprisingly, pupils regularly win music scholarships to leading schools like Eton and Westminster. In general, the school has a reputation for feeding into top secondary schools in London and around the country ■

EATON SQUARE SCHOOL

📍 79 Eccleston Square, London SW1 V1PP

- Boys and girls
- Ages: 4-13
- Term fees: £7,300
- Registration: Occurs at any stage prior to the assessment procedures taking place at the age of three years, the year prior to entry
- ISI report (2016): Excellent

Overview

Headmaster Sebastian Hepher has been at the helm since 2010 and has overseen a steady improvement in — the already outstanding — academics. Small class sizes give the school an intimate, friendly feel and allow for bundles of one-on-one time with each student.

What to expect

The school regularly makes a splash in swimming competitions (they've been national champions) as well as excelling in drama and the arts. The school exudes a sense of quintessential British charm.

How it performs

These are academic whizzes (with Mandarin on the syllabus, no less) who go on to bag scholarships and ace entrance exams. Students are also shoe-ins to the shiny new Eaton Square Upper in Mayfair ■



Thomas's Battersea

THOMAS'S BATTERSEA

📍 28-40 Battersea High Street, SW11 3JB

- Boys and girls
- Ages: 4-13
- Term Fees £6,629
- Registration: 1st September three years before entry, when children are aged between one and two years old
- Ofsted rating (2018): Outstanding

Overview

This day school welcoming boys and girls ticks all the academic boxes without being overly formal or overbearing. Children are given the space to find what they enjoy and the resources to pursue it.

Founded by David and Joanna Thomas, the Thomas's day schools in Clapham, Fulham, Kensington and Battersea have, in their relatively short history, garnered accolades galore. The children do exceptionally well in their studies, the extra-curricular offering is second to none but really it is the schools' underpinning philosophy of 'be kind' which sets them apart. Empathy and compassion are cultivated just as rigorously as ambition.

What to expect

With Prince George becoming a pupil, there is an even greater frisson of parental expectation surrounding the Thomas's name — and the school is proving more popular than ever.

A recent facelift — to the tune of £7m — has spruced up the school's classrooms and bestowed a new dining room and outdoor learning area. There is an astro-turf on site and for all other sporting requirements, the school has access to nearby Battersea Park and its excellent sports venues, Wandle Recreation Centre, Latchmere Leisure Centre and The Queen Mother's Sports Centre.

How it performs

Here children are given not just the tools to succeed in exams, but a curiosity for life-long learning. Thomas's Battersea feeds some of the most prestigious schools in the country including Harrow, Eton, Marlborough, City of London, Radley, King's College School, and Westminster ■



The Godolphin & Latymer School

THE LONDON ORATORY SCHOOL (JUNIOR HOUSE)

📍 Seagrave Road, London, SW6 1RX

- Boys
- Ages: 7 - 11
- Term fees: Comprehensive
- Admission: All applicants should register an application on the admission system by 31st October. Parents will be informed of the outcome on 1st March.
- No Ofsted or ISI assessment published

Overview

London Oratory instils in pupils a competitive edge from a young age. Children are of course nurtured and supported, but this isn't a school where they'll be wrapped in cotton wool. The Junior House focuses on specialist music and choral tuition.

What to expect

The academic rigour and strong choral tradition are set against a firm Catholic ethos. Whilst music takes centre stage, throughout the four years, pupils will be taught all the staples of the national curriculum, as well as being given a grounding in Latin and Italian.

How it performs

Academic results are exemplary and the school more than holds its own amongst its public-school counterparts. Most boys admitted at the age of 7 will continue their education at London Oratory through to 18.

Notable former pupils

- Sons of Tony Blair, former Prime Minister
- Son of Nick Clegg, former Deputy Prime Minister ■

L'ECOLE DE BATTERSEA

📍 Trott Street, London, SW11 3DS

- Boys and girls
- Ages: 3 - 11
- Term fees: £4,100
- No Ofsted or ISI assessment published

Overview

Whilst primarily following the French curriculum, teaching at L'Ecole de Battersea straddles both French and English, with the intention that children develop fluency in both. The school makes a real effort to foster family involvement, taking pride in its relationship with parents.

What to expect

The international flavour of the school runs deep – from the sports on offer, to the food in the canteen. Set in striking Victorian buildings, L'Ecole de Battersea puts on an impressively diverse range of activities, from coding and sewing to fencing.

How it performs

The waiting list for a place is a long one; testament to how highly the school is regarded. As you'd expect, many pupils head to the prestigious Lycee Francais to continue their education ■

FULHAM PREP SCHOOL

📍 200 Greyhound Road, W14 9SD

- Boys and girls
- Ages: 4 - 13
- Term fees: £6,047
- Ofsted rating (2018): Outstanding

Overview

Fulham Prep may be set in a traditional-looking Victorian school building, but the atmosphere of the place is relaxed and friendly – even slightly quirky. Headmaster Neil Brooks points out that “we never forget our pupils are just children”. Academic life is important here, but so is happiness. The pre-prep is non-selective, but its reputation means names are put down at birth.

What to expect

As pupils near the end of their time with the school, Fulham Prep takes great care in helping match each individual with the right secondary school. It's evident how well teachers get to know the children here. The school may be on a relatively compact site, but that doesn't stop Fulham Prep putting on a busy sports programme and vibrant music offering.

How it performs

Graduates of Fulham Prep can be found in many of the country's best day and boarding schools. The challenging academic programme is geared to meet the requirements of the toughest entrance exams ■

NEWTON PREP SCHOOL

📍 149 Battersea Park Road, SW8 4BX

- Boys and girls
- Ages: 3 - 13
- Term fees: £6,310
- ISI report (2015): Excellent

Overview

Located in the heart of the community of Battersea, Newton Prep School is a long way from the stereotype of the traditional London prep school. There's clearly no compromise on the quality of learning and teaching, with the school described as 'academically ambitious'.

What to expect

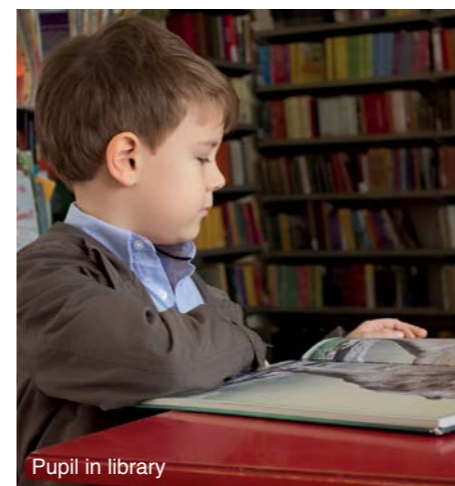
Newton Prep is blessed with the kind of spacious facilities you wouldn't necessarily expect from a city-centre school. An orchard and garden, full-size sports pitch, musical recital hall, auditorium and gyms all make for a broad education and a real range of experiences. Then there's the huge library that visiting authors have described as the best they've seen in any primary school.

How it performs

Leavers will often have the best secondary schools in London in their sights, gaining places at the likes of James Allen Girls School and Westminster. Many will head there with academic scholarships.

Notable former pupils

- Amber Le Bon, model (Daughter of Yasmin le Bon and Simon Le Bon) ■



Pupil in library



Boys preparing fencing class

KENSINGTON PREP SCHOOL

📍 596 Fulham Road, SW6 5PA

- Girls
- Ages: 4 - 11
- Term fees: £5,524
- ISI report (2015): Excellent

Overview

Kensington Prep School is part of the Girls' Day School Trust family, but certainly has the feel of a school that is carving its own path. It combines the academic rigour you'd expect with a – perhaps more unexpected – commitment to the promotion of healthy living, the environment, and use of technology. What's more, open-ended challenges with no 'right answer' are central to its claim of being 'a thinking school' – a philosophy that has won it a raft of awards.

What to expect

Following an extensive refurbishment, Kensington Prep School has some of the best facilities of any prep school in London, if not the country.

Classrooms are equipped with iPads and laptops. Meanwhile, an 'Explore Floor' complete with touch-screen walls, takes pupils out of textbooks and into walk-through immersive environments – from the Amazon rainforest to the London skyline. Innovations

in the curriculum such as 'creative thinking' indicate that the school is really preparing girls for the modern world. There are myriad opportunities to put that into practice, with green screen rooms for filmmaking, and even a recording studio for producing podcasts and digital radio shows.

It would be easy to cynically dismiss all this as gimmickry. But seeing how the pupils take to it with gusto is enough to reassure that this is, in all likelihood, the future of education.

How it performs

Academic results are outstanding, with many pupils taking up places at the country's leading girls' secondary schools, from St Paul's to Cheltenham. The Sunday Times has named Kensington Prep the Independent Prep School of the year, and it's in the running for the prestigious equivalent TES award too. Its innovative use of technology and high percentage of leavers progressing on to top academic schools has earned Kensington Prep more silverware from the likes of 'The Week' and bestprepschools.co.uk.

Notable former pupils

- Emily Davison, campaigner ■



The Godolphin & Latymer School

SECONDARY

ST PAUL'S SCHOOL

📍 Lonsdale Road, SW13 9JT

- Boys
- Ages: 13-18
- Term fees: £8,101; boarding £12,133
- Registration: Three years before entry £175 fee
- Admission: The Independent Schools Examinations Board pre-test, CE, interview and previous school's report
- Oxbridge: 29%
- ISI report (2017): Excellent

Overview

This is where the brightest and best are steered towards an even brighter and better future. And yet, there isn't that over-pressurised atmosphere you'll find in most top performing schools. In fact, these high achievers are surprisingly low key.

What to expect

Having clocked over 500 years as

a school, St Paul's has a piece of history in every magnificent brick and cornice. With a £77m renovation in full swing, it's about to become even more magnificent still. St Paul's has a whopping 45 acres of land – plenty of room to accommodate the boat house, various pitches, swimming pool, tennis courts and running track. Luckily students are given a two-hour lunch break – ample time to make use of all those sporting facilities.

How it performs

85% of pupils scored A*s and As in their A levels. More and more are setting their academic sights overseas and attending Ivy League schools in the US.

Notable former pupils

- Samuel Pepys, diarist, MP
- Dan Snow, TV presenter
- George Osborne, former Chancellor of the Exchequer
- Ed Vaisey, MP
- Paul Nash, painter ■



Pupils walking between classes

LADY MARGARET SCHOOL

📍 Parsons Green, Fulham, London SW6

- Girls
- Ages: 11-18
- Term fees: n/a
- Registration: By November of year before entry
- Admission: Open from the 1st November – September before entry
- Ofsted rating (2015): Outstanding

Overview

The notion of strong community is front and centre at Lady Margaret School. As a Church of England academy, Christian values underpin the caring, compassionate environment that girls benefit from here. The aim of the school is to give students a "goodly heritage" speaks to a desire to ensure girls leave with a moral compass that's as strong as their academic results.

What to expect

Collective worship forms part of the daily routine at Lady Margaret School, helped by a special relationship with the local parish church, St Dionis. Citizenship and PSHE also feature prominently in the school's curriculum. Expectations of girls are high, and not just in academic life. Pupils are actively encouraged try new extra-curricular activities beyond their comfort zone.

How it performs

A-Level results in 2017:
89% of grades were A*-C
69% of grades attained were A*-B
36% of grades were A*-A

Notable former pupils

- Janet Street-Porter, journalist and broadcaster ■

EMANUEL SCHOOL

📍 Battersea Rise, SW11 1HS

- Boys and girls
- Ages: 10-18
- Term fees: £5,999
- Oxbridge: 5%
- Registration: 2 years before entry – £145 fee
- Admission: Pre-test, school's own exam and interview
- ISI report (2015): Excellent

Overview

A spectacular school building set in beautiful grounds, the sight of the Emanuel campus is enough to put a smile on anyone's face. No surprise, given the school claims that it is happiness that makes students successful.

What to expect

There is a keen focus on life beyond the classroom at Emanuel, with a particular focus on drama. Sport, music and theatre are not an afterthought here, they're central to the school experience. The facilities to support those pursuits are superb; Emanuel is blessed with two rugby pitches, a swimming pool, and a cutting-edge arts centre. The library, meanwhile, is a stunning place that pupils actually enjoy spending time in.

How it performs

A-Level results in 2017:
68% A*-B grades

Notable former pupils

- Sir Tim Berners-Lee, computer scientist
- Michael Roux Jr, chef
- Michael Aspel, TV presenter
- Richard Marquand, film director ■



Young violinist

ST PAUL'S GIRLS' SCHOOL

📍 Brook Green, W6 7BS

- Girls
- Ages: 11-18
- Term fees: £8,577
- Oxbridge: 47%
- Registration: By November of year before entry; £125 fee
- Admission: School's own exams, interview and previous school's report
- ISI report (2015): Excellent

Overview

The atmosphere here is unexpectedly relaxed. Pupils are not required to wear a uniform and the emphasis is on cultivating individuality and academic independence. Relaxed perhaps, but this school is no slacker with leavers regularly skipping off to the top universities in the country.

What to expect

With its oak panelling and red brick, St Paul's certainly has the appearance to match its lofty academic successes.

Naturally studious girls thrive here, but when they aren't poring over their books they can be found taking part in one of the umpteen extra-curricular or sporting activities on offer. There are numerous well-established, interesting clubs and societies to choose from as well as a diverse range of sports. Think water polo, fencing, lacrosse and equestrian (among others). Not to mention all the philanthropic ventures. A 'Paulina' is nothing if not well-rounded.

How it performs

Academic excellence is at this school's heart, and the results speak for themselves. Girls regularly have their pick of top universities in both the UK and the USA.

Notable former pupils

- Rosalind Franklin, chemist
- Dame Celia Johnson, actress
- Alexandra Shulman, former editor of Vogue ■

THE GODOLPHIN & LATYMER SCHOOL

📍 Iffley Road, W6 0PG

- Girls
- Ages: 11 - 18
- Term fees: £6,978
- Oxbridge: 20%
- Registration: By November of year before entry; £125 fee
- Admission: North London Girls' Schools' Consortium exam and interview
- ISI report (2015): Excellent

Overview

The school, and the girls who go here, ooze a down-to-earth confidence. Godolphin & Latymer is building a reputation for being that rare thing among London independent secondary schools – grounded. The fact that the school interviews everyone who applies is perhaps why it's able to retain a refreshingly inclusive, compassionate air.

What to expect

The facilities are not only impressive, they're geared to setting girls up for the modern world. Technology workshops, classroom iPads and music production suites all point to a school that isn't content to rest on its laurels. Offering older girls the choice between A-Levels or the International Baccalaureate is indicative of a forward-thinking curriculum too.

How it performs

A-Level results in 2017:
77% A*-A grades
IB average of 40 points

Notable former pupils

- Davina McCall, TV presenter
- Baroness Coussins, parliamentarian
- Kate Beckinsale, actress
- Samantha Bond, actress
- Nigella Lawson, broadcaster, food writer ■

HARRIS WESTMINSTER SIXTH FORM

📍 Steele House, 11 Tothill Street SW1H 9LH

- Boys and girls
- Ages: 16 - 18
- Term fees: n/a
- Registration: Applications open from 3rd September - 9th December year before entry
- Admission: Test and interview. Students take two entrance examinations, choosing from their four subject choices and will have one interview on their preferred subject choice
- Ofsted rating (2016): Outstanding

Overview

Established in 2014, Harris Westminster Sixth Form may be a newcomer to the London secondary education scene, but it is making serious waves. It was formed from

an agreement between the prestigious Westminster School and the Harris Federation, who run outstanding maintained-sector schools across London. The result is a real 'best-of-both worlds' which is proving you don't need to be a public school to get large numbers of students into the very top universities.

What to expect

Admission is competitive, but once through the door, Harris Westminster fosters a real sense of 'the sky is the limit' ambition. It has been described by some as a 'two-year academic hothouse', which gives some indication of the teaching rigour.

How it performs

A-Level results in 2017:
86% of grades were A*-C
43% of grades were A*-A ■



The Godolphin & Latymer School

THE LONDON ORATORY SCHOOL

📍 Seagrave Road, London, SW6 1RX

- Boys (ages 7 - 18) and girls (ages 16 - 18)
- Term fees: n/a
- Oxbridge: 5%
- Admission: All applicants should register an application on the e admission system by 31st October. Parents will be informed of the outcome on 1st March
- No Ofsted or ISI assessment published

Overview

The London Oratory School is one of England's oldest and most distinguished Catholic state-funded schools. Although perhaps best known as a boys' school, girls are admitted into the sixth form. It aims to provide education in accordance with the principles and teachings of the Catholic faith. The school doesn't shy away from setting out exactly what is expected of pupils, and indeed parents. It demands nothing short of high standards of excellence in all activities. But it's that traditional focus on hard work and discipline that sees the London Oratory School outperform many of its illustrious fee-paying rivals.

What to expect

Outside of the classroom, the school is renowned for the quality of its choral and instrumental music. There are no fewer than five highly respected choirs, some of which contributed to the soundtrack of the Lord of

the Rings trilogy. It also has a fine rugby pedigree, and several Old Oratorians have gone on to play the game professionally at international level.

A chapel, arts centre with 305-seat auditorium, 25-metre swimming pool, newly refurbished gyms and outdoor space for tennis courts and ball games, all serve to make the London Oratory one of the best-equipped schools of its kind.

How it performs

Given that the London Oratory School admits pupils of all abilities, its academic performance is nothing short of remarkable. Whilst the culture of the school is perhaps stricter than the norm these days, it clearly pays dividends in terms of results.

A-Level results in 2017:
25% of pupils achieved 3 A*-A grades

73% of pupils achieved 3 A*-B grades

9 students achieved places at Oxbridge

5 students secured places at medical schools

Notable former pupils

- Simon Callow, actor
- Hayley Atwell, actress
- Sons of Tony Blair, former PM
- Son of Nick Clegg, former Deputy PM ■



The Godolphin & Latymer School



The Godolphin & Latymer School

UNIVERSITIES

UNIVERSITY OF WEST LONDON

📍 St Mary's Road, Ealing, London, W5 5RF

Overview

The University of West London's Ealing campuses are located just a 30 minutes from Fulham Reach by tube. The university offers undergraduate and postgraduate courses (both full-time and part-time) across a wide range of disciplines from music technology to civil engineering and culinary arts.

What to expect

Seeing as its tagline is 'the career university', it's unsurprising that

UWL places the emphasis heavily on practical placements and job fulfilment. 98% of graduates succeed to further study or the workplace within six months of graduation. This sort of career-focused outlook is in line with most modern universities of its kind (higher education institutions granted university status since 1992).

How it performs

The Times University Guide 2018 rankings placed the University of West London in 56th place nationally on 24th September 2017. The University now sits firmly in the top half of UK universities.

Notable alumni

- Freddie Mercury, singer
- Chris Galvin, restaurateur ■

UNIVERSITY COLLEGE LONDON

📍 Gower St, Bloomsbury, London WC1E 6BT

Overview

The main UCL campuses are situated in and around Bloomsbury in central London – making it a very quick commute from the environs of Chelsea, Fulham or Battersea. As well as admitting the best of the best to study in its hallowed halls (there are currently some 35,000 students), UCL is also a respected research facility and manager of umpteen culturally significant museums and collections.

What to expect

This is one of the top universities not only in England but the world. Matriculation is competitive here and students really need to make A*s and As at A-level in order to be successful. UCL is considered to be an academic all-rounder with top-notch teaching staff across all its courses – from mathematics and medicine to physics and psychology. But the campus is certainly conducive to studying hard. Beautiful buildings – all towering columns and vaulted ceilings – serve to inspire the burgeoning intellectual.

How it performs

In the 2018/19 QS World University Rankings, UCL is ranked 10th in the world (and 5th in Europe). In the 2018 Times Higher Education World University Rankings, UCL is ranked 16th in the world (and 5th in Europe).

Notable alumni

- Mahatma Gandhi, activist
- Joseph Lister, surgeon and scientist
- Christopher Nolan, director
- A.A Gill, writer and journalist
- Ricky Gervais, comedian ■

IMPERIAL COLLEGE LONDON

📍 South Kensington Campus, London SW7 2AZ

Overview

Specialising solely in science, engineering, medicine and business, Imperial uses its tight focus to offer an education that is truly cutting-edge in its field. This is a university with the big scientific questions and global challenges of the day in its sights.

What to expect

More than 140 nationalities are represented on the Imperial College campus, making it one of the most international universities in the world. But with an excellent main campus in South Kensington bringing everyone together, it feels like a global community of specialists studying what they love with others who love it too. Students will have access to world-class research facilities, from full motion flight simulators and hydrodynamics labs to wind tunnels.

How it performs

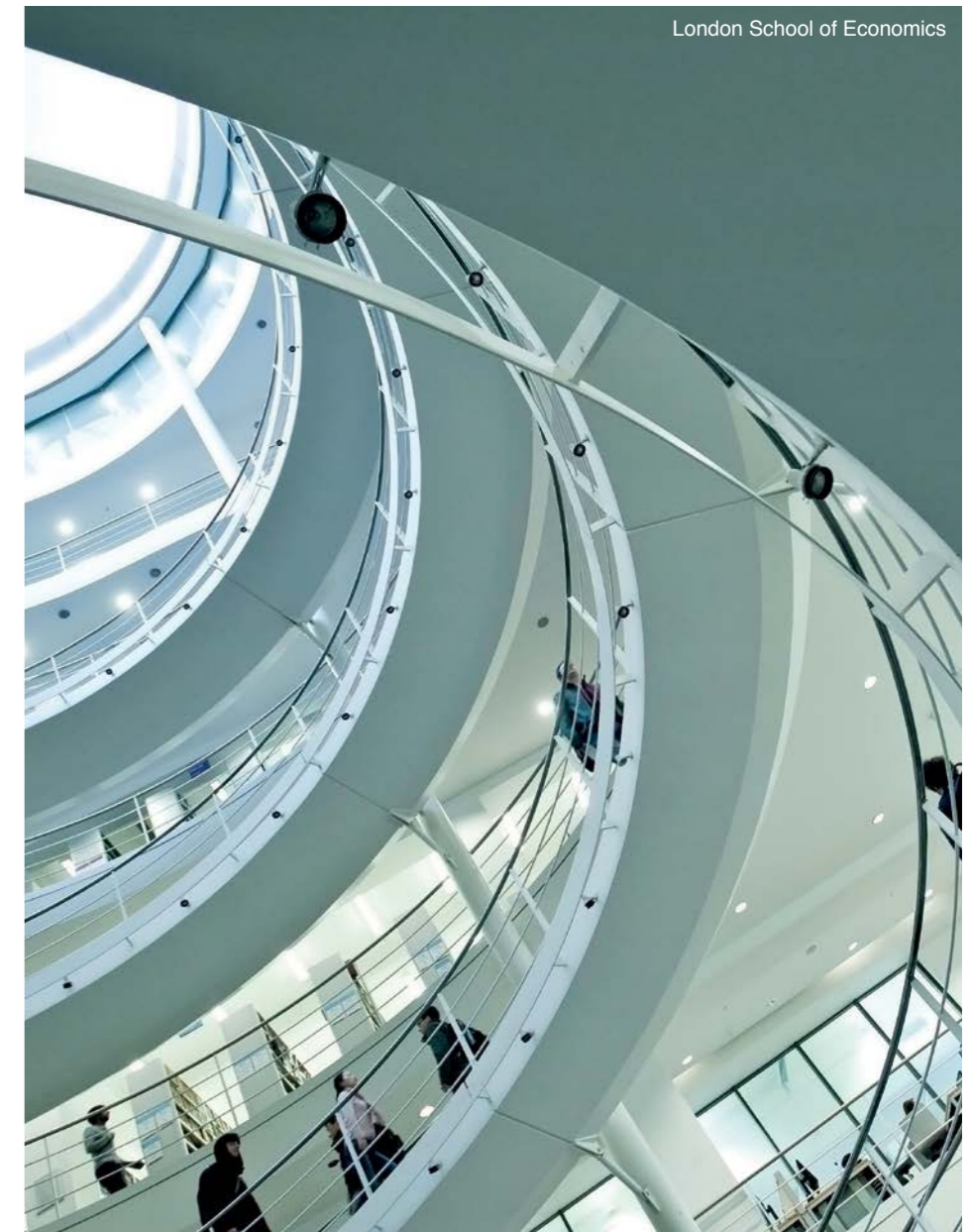
Imperial College is consistently rated as one of the world's best universities. According to The Times World University Rankings 2018, it is the 3rd best performing in Europe, and 8th in the world.

Notable alumni

- H.G. Wells, author
- Sir Alexander Fleming, physician
- Thomas Huxley, biologist
- Brian May, guitarist
- Dame Sally Davies, Chief Medical Officer for England ■

LONDON SCHOOL OF ECONOMICS

📍 Houghton Street, London WC2A 2AE



Overview

LSE is recognised as the world's leading dedicated social sciences institution. Whilst it carved out its reputation in economics (over a quarter of all Nobel Prizes in Economics have been awarded to LSE alumni), the university offers courses in the fields of politics, law, business and more.

What to expect

70% of the student body at LSE are international students, making the Holborn-based campus a real global melting pot. There is a culture of big ambition at LSE, with many leavers taking up positions in the City of London to embark on illustrious, and often lucrative, careers. The fact that, out of all European universities, LSE has educated the most billionaires

says something about the self-assuredness of the institution itself and the people who study here.

How it performs

LSE regularly ranks first or second in the world for social sciences. When included with institutions with a broader scope, it places in the top 10 nationally, and the top 50 globally.

Notable alumni

- Clement Attlee, former PM
- George Soros, investor and philanthropist
- Tsai Ing-wen, President of China
- Mervyn King, former Governor of the Bank of England
- Stelios Haji-Ioannou, businessman ■



KING'S COLLEGE LONDON

📍 Strand, London, WC2R 2LS

Overview

King's lays claim to being the fourth oldest university in the country, having been established in 1829. Its historic heart is on the Strand, but four other campuses across London cater for its 30,000-strong student body. It has an impressive academic reputation in many areas but is world-renowned for its healthcare education – across medicine, dentistry and nursing in particular.

What to expect

Some of King's facilities are spread across multiple sites, but it still manages to retain a sense of identity that is the envy of most London universities. Many of the buildings it occupies are steeped in history – from the Round Reading Room and the Maughan Library, to the imposing Bush House and the Grade I listed King's College Chapel on the Strand.

How it performs

Depending on the criteria involved, King's places 28th nationally in The Times University Guide 2018, and 23rd globally according to the 2018 QS World University Rankings. Whatever the measure, though, it's up there with the very best.

Notable alumni

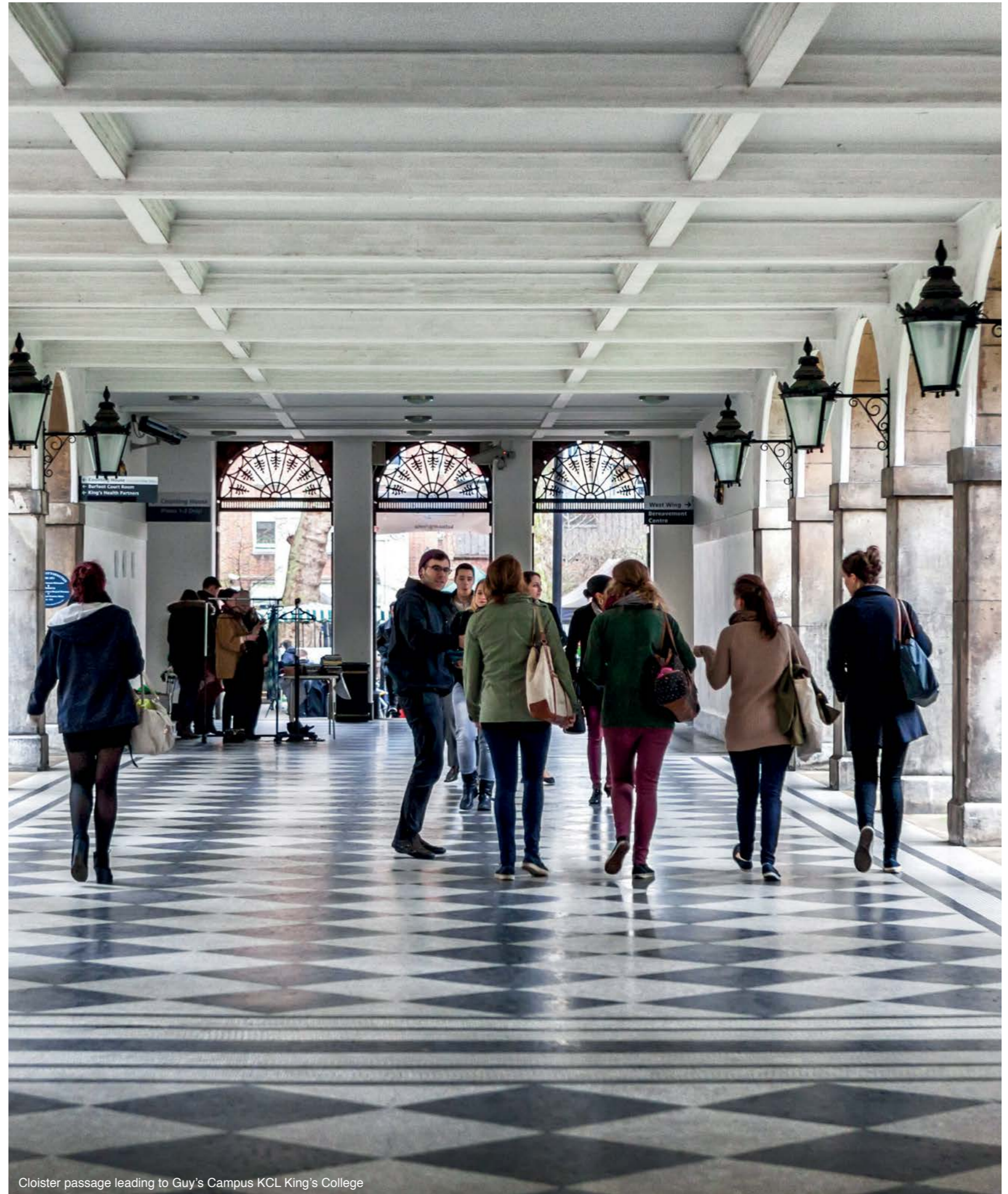
John Keats, poet
Peter Higgs, physicist
Archbishop Desmond Tutu
Alain de Botton, philosopher and writer
Thomas Hardy, novelist ■



Khadija Najefi, of Kings College and Young Leaders UK (YLUK) introduces President Barack Obama at an rally in London. 23rd April 2016



King's College London



Cloister passage leading to Guy's Campus KCL King's College

CHELSEA CREEK

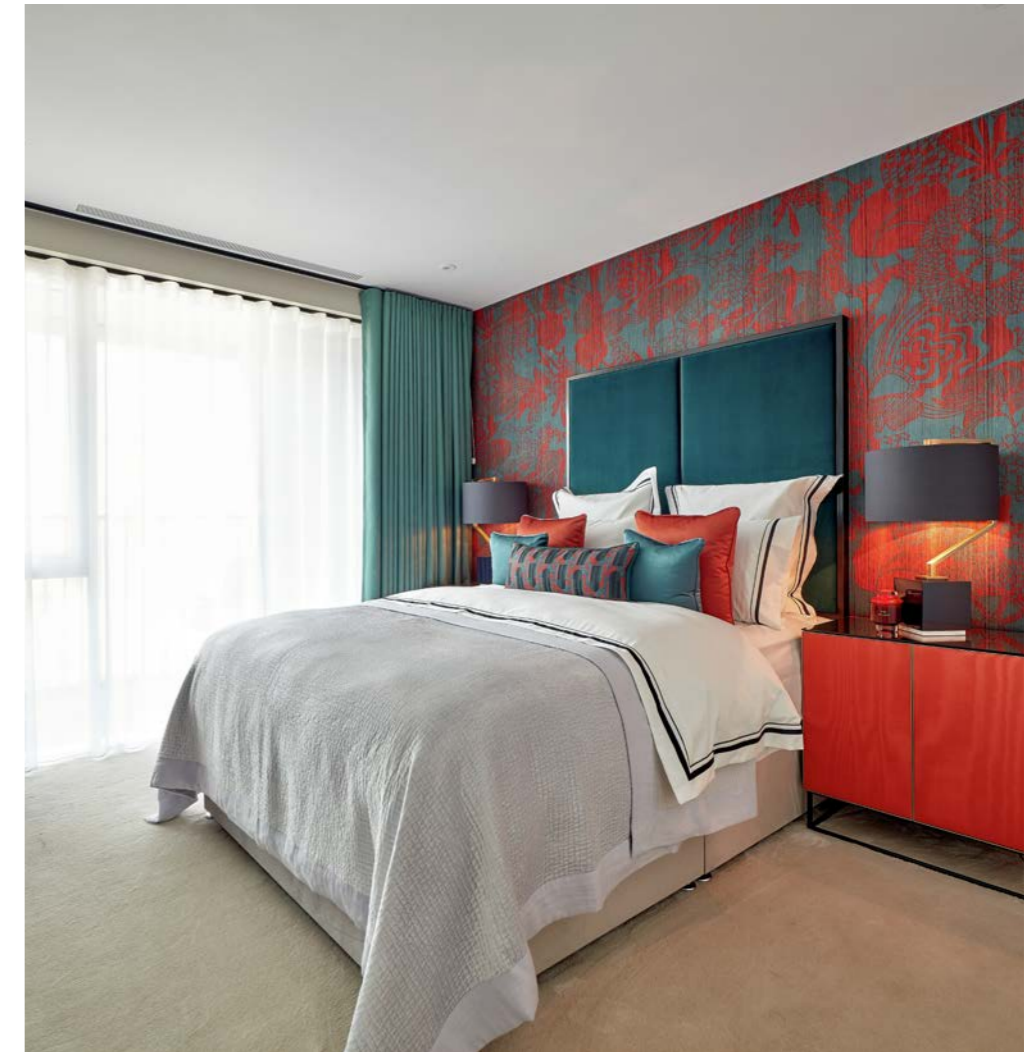
■ Chelsea, SW6 2FS

EUROPEAN-STYLE WATERSIDE LIVING JUST MINUTES FROM THE KINGS ROAD

With a selection of 1 and 2 bedroom apartments and duplex penthouses, Chelsea Creek brings a characteristically European style of waterside living to central London. A stunning location with tree-lined avenues and canals which run through the heart of the development. Just moments from your doorstep is fast access into the City from Imperial Wharf station or endless shopping opportunities on the nearby King's Road, Sloane Street or Westfield.

COMPLETED HOMES NOW AVAILABLE

Prices from £840,000.




Photography is indicative only

CONTACTS

Chelsea Creek Show Apartments
and Marketing Suite

9 Park Street
Chelsea Creek
London
SW6 2FS

T: 020 7610 9693
E: sales@chelseacreek.co.uk
chelseacreek.co.uk





www.stgeorgeplc.com

Proud to be a member of the Berkeley Group of companies

