

FULHAM REACH

LONDON W6



FULHAM REACH, A PLACE OF BEAUTY AND INSPIRATION

On one of the most dramatic stretches of the River Thames lies Fulham Reach, a thriving development set within beautifully landscaped gardens and riverside walkways offering you a selection of on-site cafés, restaurants and exceptional leisure facilities.

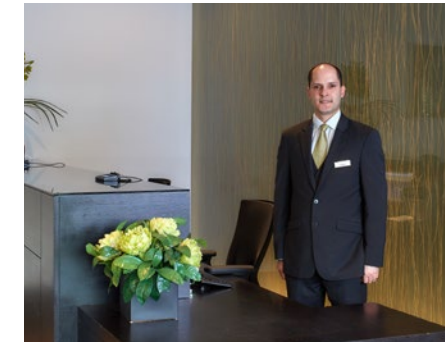


LIFE AT FULHAM REACH IS ALL COVERED

At the Fulham Reach Tamesis Club all of life's needs are taken care of, be that leisure time spent in the gym and spa or a relaxing evening playing snooker or enjoying a movie with friends.



Fully equipped gymnasium



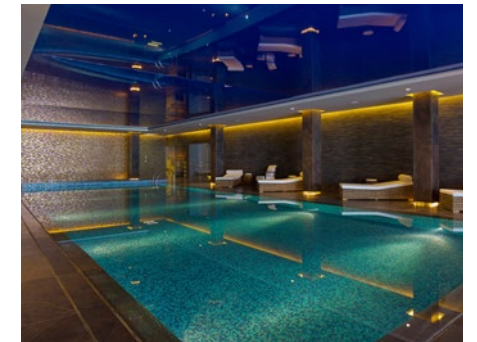
24 hour concierge



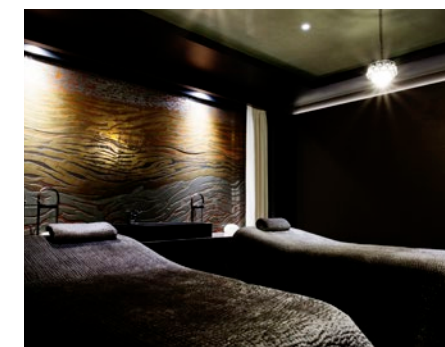
Twelve seat cinema room



Private wine cellar



15m swimming pool & jacuzzi



Private treatment room



Snooker room with full size table



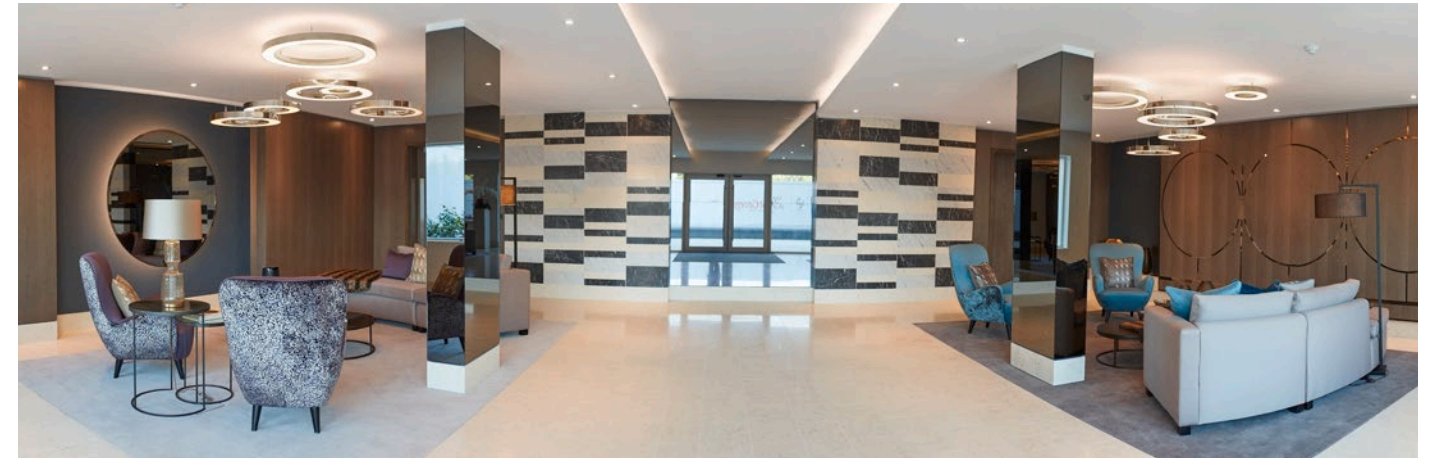
Virtual golf room



Sauna

FAIREAX HOUSE

A stunning collection of 1, 2 and 3 bedroom apartments.
Beautifully positioned in the heart of the development amongst
manicured landscaped gardens and elegant courtyards.



Computer generated image depicts Fulham Reach and is indicative only.



Photography is indicative only.



HENLEY APARTMENTS

The Henley Apartments feature a premier collection of 2 and 3 bedroom homes situated right on the river front. These homes feature open-plan living areas and floor to ceiling windows which allow you to enjoy the panoramic views over the River Thames.



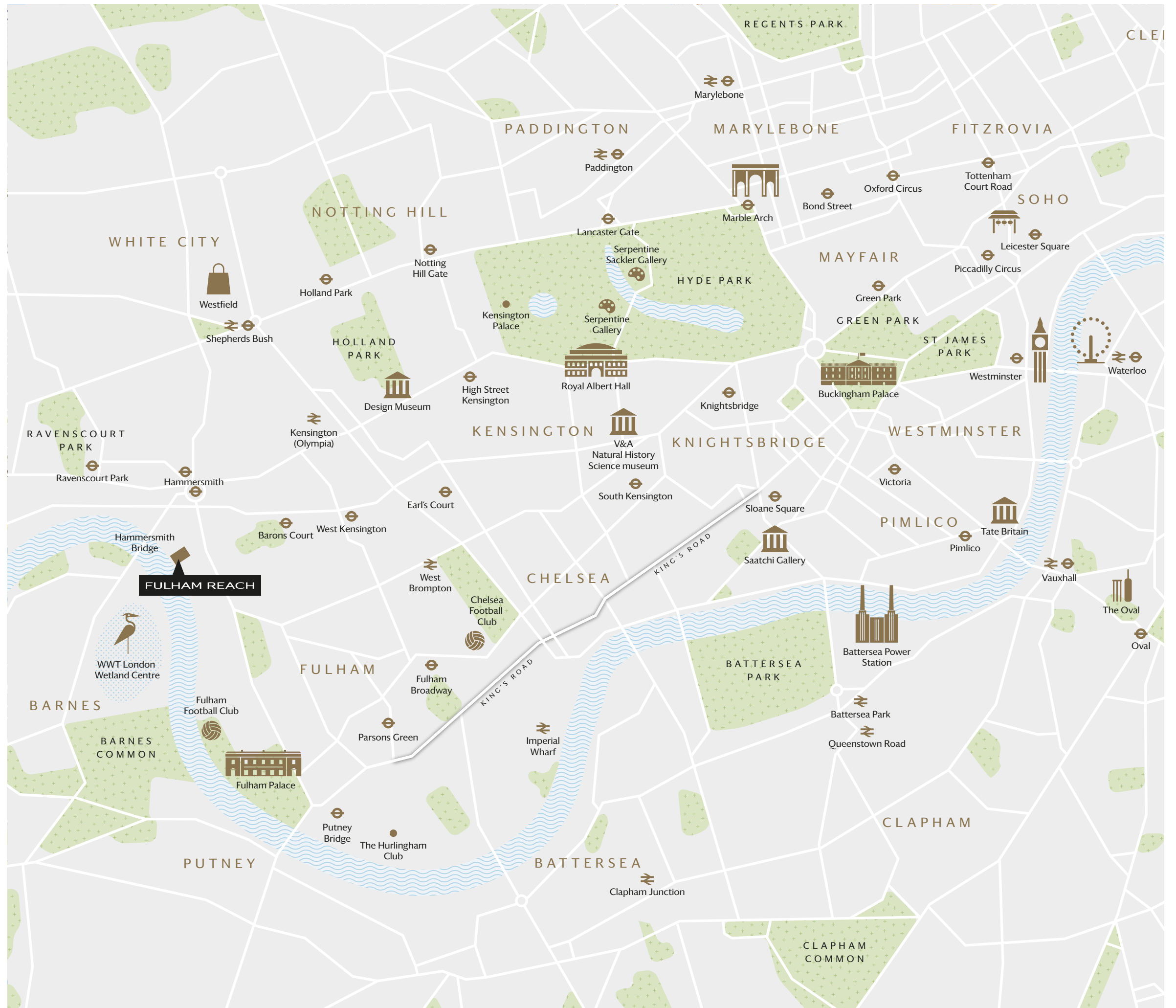
Computer generated image depicts Fulham Reach and is indicative only.





PERFECTLY PLACED

With immediate access to key roads, stations and airports, Fulham Reach boasts brilliant connections to Central London. Its convenient position places you within minutes of some of the best shopping, dining and social destinations the capital has to offer.





FULHAM REACH MARKETING SUITE

Distillery Wharf, Parr's Way,
London W6 9GD

+44 (0)20 7870 9500
enquiries@fulhamreach.co.uk
fulhamreach.co.uk



St George
Designed for life